

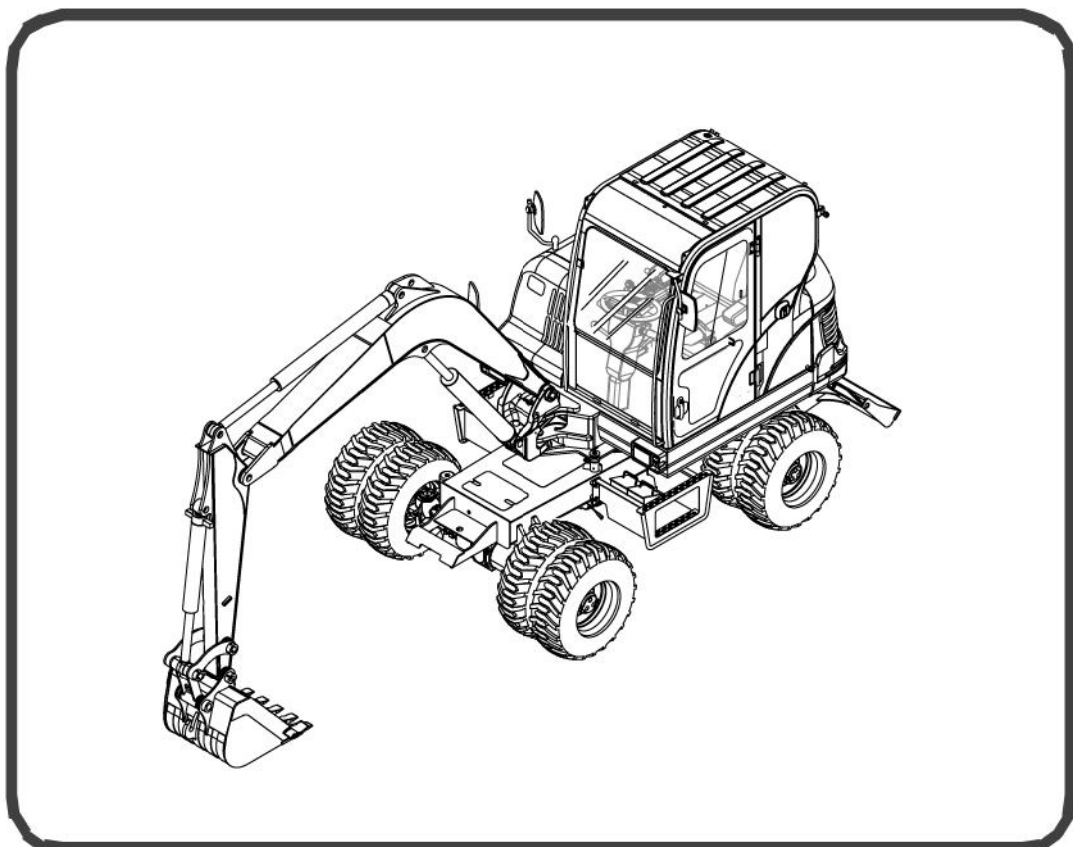


Bobcat®

EN

Service Manual E55W Excavator

S/N AEFB11001 & Above



Dealer Copy -- Not for Resale



Bobcat®
Printed in Europe



MAINTENANCE SAFETY



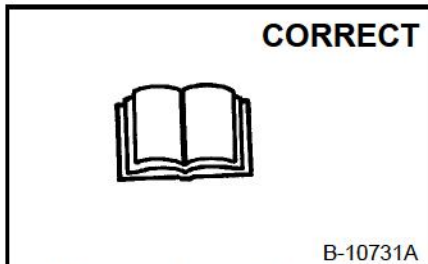
WARNING

Instructions are necessary before operating or servicing machine. Read and understand the Operation & Maintenance Manual, Operator's Handbook and signs (decals) on machine. Follow warnings and instructions in the manuals when making repairs, adjustments or servicing. Check for correct function after adjustments, repairs or service. Untrained operators and failure to follow instructions can cause injury or death.

W-2003-0903



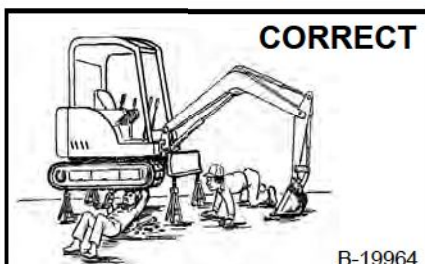
Safety Alert Symbol: This symbol with a warning statement, means: "Warning, be alert! Your safety is involved!" Carefully read the message that follows.



CORRECT

B-10731A

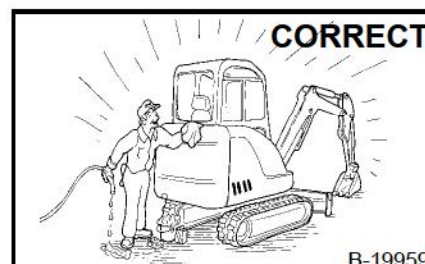
- ⚠ Never service the Bobcat Compact Excavator without instructions.



CORRECT

B-19964

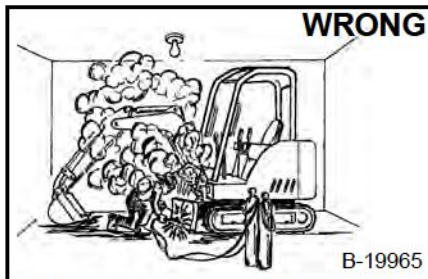
- ⚠ Use the correct procedure to lift and support the excavator.



CORRECT

B-19959

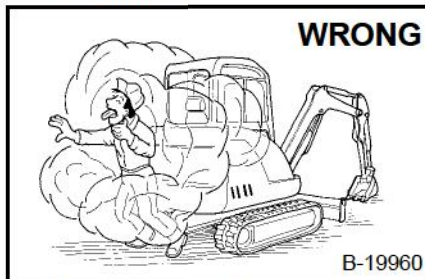
- ⚠ Cleaning and maintenance are required daily.



WRONG

B-19965

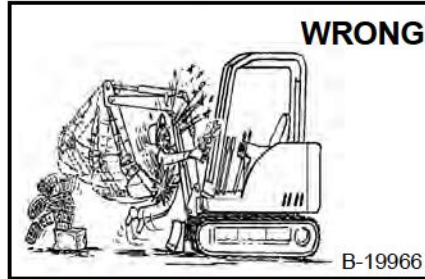
- ⚠ Have good ventilation when welding or grinding painted parts.
- ⚠ Wear dust mask when grinding painted parts. Toxic dust and gas can be produced.



WRONG

B-19960

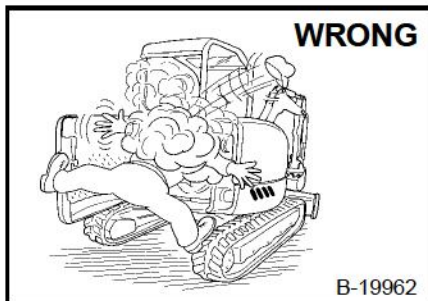
- ⚠ Vent exhaust to outside when engine must be run for service.
- ⚠ Exhaust system must be tightly sealed. Exhaust fumes can kill without warning.



WRONG

B-19966

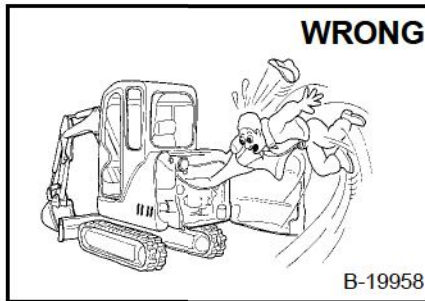
- ⚠ Always lower the bucket and blade to the ground before doing any maintenance.
- ⚠ Never modify equipment or add attachments not approved by Bobcat Company.



WRONG

B-19962

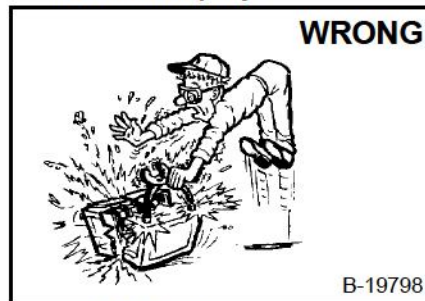
- ⚠ Stop, cool and clean engine of flammable materials before checking fluids.
- ⚠ Never service or adjust machine with the engine running unless instructed to do so in the manual.
- ⚠ Avoid contact with leaking hydraulic fluid or diesel fuel under pressure. It can penetrate the skin or eyes.
- ⚠ Never fill fuel tank with engine running, while smoking, or when near open flame.



WRONG

B-19958

- ⚠ Keep body, jewelry and clothing away from moving parts, electrical contact, hot parts and exhaust.
- ⚠ Wear eye protection to guard from battery acid, compressed springs, fluids under pressure and flying debris when engines are running or tools are used. Use eye protections approved for type of welding.
- ⚠ Keep tailgate closed except for service. Close and latch tailgate before operating the excavator.



WRONG

B-19798

- ⚠ Lead-acid batteries produce flammable and explosive gases.
- ⚠ Keep arcs, sparks, flames and lighted tobacco away from batteries.
- ⚠ Batteries contain acid which burns eyes or skin on contact.
- ⚠ Wear protective clothing. If acid contacts body, flush well with water. For eye contact flush well and get immediate medical attention.

Maintenance procedures which are given in the Operation & Maintenance Manual can be performed by the owner/operator without any specific technical training. Maintenance procedures which are not in the Operation & Maintenance Manual must be performed **ONLY BY QUALIFIED BOBCAT SERVICE PERSONNEL**. Always use genuine Bobcat replacement parts. The Service Safety Training Course is available from your Bobcat dealer.

MSW28-0805

ALPHABETICAL INDEX

ACCELERATOR PEDAL VALVE	20-100	OVERLOAD RELIEF VALVES.....	20-31
AIR CLEANER	10-60	RIGHT SIDE COVER	10-41
ALTERNATOR	50-30	SEAT BELT	10-150
ALTERNATOR BELT	10-140	SERVICE BRAKE PEDAL VALVE	20-170
ARM	40-160	STARTER	50-40
ARM CYLINDER	20-21	STEERING VALVE	20-160
AXLE	30-10	SPEC'S E55W EXCAVATOR	SPEC- 10
AXLE TOE-IN	30-11	STEERING ANGLE ADJUSTMENT.....	30-12
BATTERY	50-20	STEERING CYLINDER.....	20-150
BLADE CYLINDER	20-24	STEERING VALVE	20-160
BLADE VALVE	20-180	STOPPING THE ENGINE AND LEAVING	
BOOM	40-150	THE EXCAVATOR	10-120
BOOM CYLINDER	20-20	SWING BEARING	30-70
BOOM SWING CYLINDER.....	20-22	SWING MOTOR	20-90
BUCKET	40-170	SWIVEL JOINT	20-80
BUCKET CYLINDER	20-23	TAILGATE	10-40
CAB	40-30	TORQUE SPEC'S	SPEC-30
CAMSHAFT AND TIMING GEARS.....	60-100	TRANSMISSION	30-20
CONTROL CONSOLE LOCKNUTS.....	10-160	TRANSPORTING THE EXCAVATOR.....	10-20
CONVERSIONS.....	SPEC-70	TRAVEL MOTOR	20-70
COOLING SYSTEM	10-70	UPPERSTRUCTURE SLEW LOCK.....	10-11
COUNTERWEIGHT	40-200		
CYLINDER HEAD	60-80		
DIAGNOSTIC SERVICE CODES.....	50-80		
DRAINING AND REFILLING TRANSMISSION			
AND AXLE	10-120		
DRIVE SHAFT	30-13		
EGR-SYSTEM	60-130		
ELECTRICAL SYSTEM INFORMATION	50-10		
ENGINE COOLING SYSTEM	60-50		
ENGINE INFORMATION.....	60-10		
ENGINE LUBRICATION SYSTEM.....	10-90		
ENGINE SPECIFICATIONS.....	SPEC-20		
ENGINE SPEED CONTROL.....	60-20		
EXCAVATOR STORAGE AND RETURN			
TO SERVICE.....	10-170		
FRAME LEVELING LOCK VALVE	20-140		
FUEL, COOLANT AND LUBRICANTS	SPEC-60		
FUEL LEVEL SENDER.....	50-70		
FUEL SYSTEM	10-80 & 60-70		
FUEL TANK.....	40-120		
HYDRAULIC CONNECTION SPEC'S	SPEC-40		
HYDRAULIC CONTROL VALVE	20-40		
HYDRAULIC FLUID SPEC'S	SPEC-50		
HYDRAULIC SYSTEM.....	10-100		
HYDRAULIC SYSTEM INFORMATION	20-10		
JOYSTICK	20-110		
LIFTING AND BLOCKING THE EXCAVATOR.....	10-10		
LIFTING THE EXCAVATOR	10-12		
LUBRICATION OF THE HYD. EXCAVATOR.....	10-110		
LUBRICATION SYSTEM.....	60-60		
MAIN RELIEF VALVE.....	20-30		

CONTENTS

FOREWORD	iii
SAFETY INSTRUCTIONS	v
FIRE PREVENTION	vii
SERIAL NUMBER LOCATIONS	ix
DELIVERY REPORT	x
BOBCAT EXCAVATOR IDENTIFICATION	xi
SAFETY AND MAINTENANCE	10-01
HYDRAULIC SYSTEM	20-01
UNDERCARRIAGE	30-01
UPPERSTRUCTURE & SWING SECTION	40-01
ELECTRICAL SYSTEM AND ANALYSIS	50-01
ENGINE SERVICE	60-01
SPECIFICATIONS	SPEC-01

**SAFETY AND
MAINTENANCE**

**HYDRAULIC
SYSTEM**

UNDERCARRIAGE

**UPPERSTRUCTURE
AND SWING
SECTION**

**ELECTRICAL
SYSTEM AND
ANALYSIS**

**ENGINE
SERVICE**

SPECIFICATIONS

<https://www.ebooklibonline.com>

Hello dear friend!

Thank you very much for reading.

Enter the link into your browser.

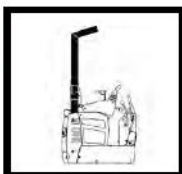
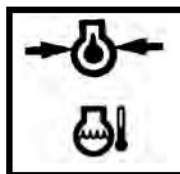


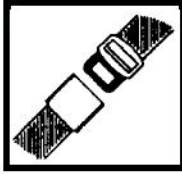
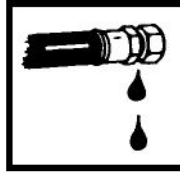



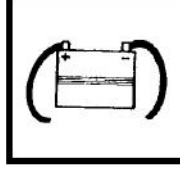

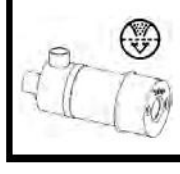
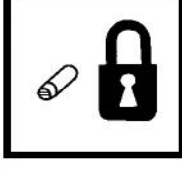

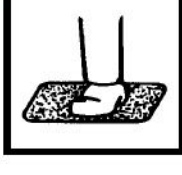

The full manual is available for immediate download.

<https://www.ebooklibonline.com>

FOREWORD

This manual is for the Bobcat excavator mechanic. It provides necessary servicing and adjustment procedures for the Bobcat excavator and its component parts and systems. Refer to the Operation & Maintenance Manual for operating instructions, starting procedure, daily checks, etc.

A general inspection of the following items must be made after the excavator has had service or repair:

- | | | | |
|---|---|--|---|
| 1. Check that the fold-down TOPS is in good condition and is not modified. |  | 9. Check for correct function of indicator lamps. |  |
| 2. Check that fold-down TOPS mounting hardware is tightened and is Bobcat approved. |  | 10. Check hydraulic fluid level, engine oil level and fuel supply. |  |
| 3. The seat belt must be correctly installed, functional and in good condition. |  | 11. Inspect for fuel, oil or hydraulic fluid leaks. |  |
| 4. Machine signs (decals) must be legible and in the correct location. |  | 12. Lubricate the excavator. |  |
| 5. Travel levers, control levers and foot pedals must return to neutral. Check that the pedal locks are in working order. |  | 13. Check the condition of the battery and cables. |  |
| 6. Check for correct function of the work lights. |  | 14. Inspect the air cleaner for damage or leaks. Check the condition of the element. |  |
| 7. Attachment locking pins must function correctly and be in good condition. |  | 15. Check the electrical charging system. |  |
| 8. Safety treads must be in good condition. |  | 16. Check tracks for wear and tension. Use only approved tracks. |  |

FW EXC UC-0508 SM

17. Inspect for loose or broken parts or connections.



20. Check the control console interlocks for correct function.



18. Check for any field modification not completed.



21. Check function or condition of all equipped options and accessories (examples: boom light, motion alarm, etc.).



19. Operate the machine and check all functions.



22. Recommend to the owner that all necessary corrections be made before the machine is returned to service.



SAFETY INSTRUCTIONS

 Safety Alert Symbol
This symbol with a warning statement means: "Warning, be alert! Your safety is involved!" Carefully read the message that follows.



Instructions are necessary before operating or servicing machine. Read and understand the Operation & Maintenance Manual, Operator's Handbook and signs (decals) on machine. Follow warnings and instructions in the manuals when making repairs, adjustments or servicing. Check for correct function after adjustments, repairs or service. Untrained operators and failure to follow instructions can cause injury or death.

W-2003-0903



This notice identifies procedures which must be followed to avoid damage to the machine.

I-2019-0284



The signal word DANGER on the machine and in the manuals indicates a hazardous situation which, if not avoided, will result in death or serious injury.

D-1002-1107



The signal word WARNING on the machine and in the manuals indicates a potentially hazardous situation which, if not avoided, could result in death or serious injury.

W-2044-1107

The following publications provide information on the safe use and maintenance of the Bobcat machine and attachments:

- The Delivery Report is used to assure that complete instructions have been given to the new owner and that the machine is in safe operating condition.

- The Operation & Maintenance Manual delivered with the machine or attachment contains operating information as well as routine maintenance and service procedures. It is a part of the machine and can be stored in a container provided on the machine. Replacement Operation & Maintenance Manuals can be ordered from your Bobcat dealer.
- Machine signs (decals) instruct on the safe operation and care of your Bobcat machine or attachment. The signs and their locations are shown in the Operation & Maintenance Manual. Replacement signs are available from your Bobcat dealer.
- An Operator's Handbook fastened to the operator cab. It's brief instructions are convenient to the operator. The handbook is available from your dealer in an English edition or one of many other languages. See your Bobcat dealer for more information on translated versions.
- The AEM Safety Manual delivered with the machine gives general safety information.
- The Service Manual and Parts Manual are available from your dealer for use by mechanics to do shop-type service and repair work.
- The Compact Excavator Operator Training Course is available through your local dealer or at www.training.bobcat.com or www.bobcat.com. This course is intended to provide rules and practices of correct operation of the Bobcat excavator. The course is available in English and Spanish versions.
- Service Safety Training Courses are available from your Bobcat dealer or at www.training.bobcat.com or www.bobcat.com. They provide information for safe and correct service procedures.
- The Bobcat compact excavator Safety Video is available from your Bobcat dealer or at www.training.bobcat.com or www.bobcat.com.

SI EXC-0308 SM

SAFETY INSTRUCTIONS (CONT'D)

The dealer and owner / operator review the recommended uses of the product when delivered. If the owner / operator will be using the machine for a different application(s) he or she must ask the dealer for recommendations on the new use.



Cutting or drilling concrete containing sand or rock containing quartz may result in exposure to silica dust. Do not exceed Permissible Exposure Limits (PEL) to silica dust as determined by OSHA or other job site Rules and Regulations. Use a respirator, water spray or other means to control dust. Silica dust can cause lung disease and is known to the state of California to cause cancer.

SI EXC-0308 SM

FIRE PREVENTION



Maintenance

The machine and some attachments have components that are at high temperatures under normal operating conditions. The primary source of high temperatures is the engine and exhaust system. The electrical system, if damaged or incorrectly maintained, can be a source of arcs or sparks.

Flammable debris (leaves, straw, etc.) must be removed regularly. If flammable debris is allowed to accumulate, it can cause a fire hazard. Clean often to avoid this accumulation. Flammable debris in the engine compartment is a potential fire hazard.

The operator's area, engine compartment and engine cooling system must be inspected every day and cleaned if necessary to prevent fire hazards and overheating.

All fuels, most lubricants and some coolants mixtures are flammable. Flammable fluids that are leaking or spilled onto hot surfaces or onto electrical components can cause a fire.

Operation

Do not use the machine where exhaust, arcs, sparks or hot components can contact flammable material, explosive dust or gases.

Electrical



Check all electrical wiring and connections for damage. Keep the battery terminals clean and tight. Repair or replace any damaged part or wires that are loose or frayed.

Battery gas can explode and cause serious injury. Use the procedure in the Operation & Maintenance Manual for connecting the battery and for jump starting. Do not jump start or charge a frozen or damaged battery. Keep any open flames or sparks away from batteries. Do not smoke in battery charging area.

Hydraulic System

Check hydraulic tubes, hoses and fittings for damage and leakage. Never use open flame or bare skin to check for leaks. Hydraulic tubes and hoses must be properly routed and have adequate support and secure clamps. Tighten or replace any parts that show leakage.

Always clean fluid spills. Do not use gasoline or diesel fuel for cleaning parts. Use commercial nonflammable solvents.

Fueling



Stop the engine and let it cool before adding fuel. No smoking! Do not refuel a machine near open flames or sparks. Fill the fuel tank outdoors.

Starting

Do not use ether or starting fluids on any engine that has glow plugs. These starting aids can cause explosion and injure you or bystanders.

Use the procedure in the Operation & Maintenance Manual for connecting the battery and for jump starting.

Spark Arrestor Exhaust System

The spark arrestor exhaust system is designed to control the emission of hot particles from the engine and exhaust system, but the muffler and the exhaust gases are still hot.

Check the spark arrestor exhaust system regularly to make sure it is maintained and working properly. Use the procedure in the Operation & Maintenance Manual for cleaning the spark arrestor muffler (if equipped).

SI EXC-0308 SM

FIRE PREVENTION (CONT'D)

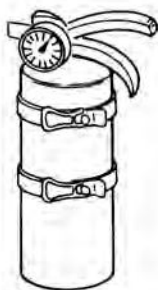
Welding And Grinding

Always clean the machine and attachment, disconnect the battery, and disconnect the wiring from the Bobcat controllers before welding. Cover rubber hoses, battery and all other flammable parts. Keep a fire extinguisher near the machine when welding.

Have good ventilation when grinding or welding painted parts. Wear dust mask when grinding painted parts. Toxic dust or gas can be produced.

Dust generated from repairing nonmetallic parts such as hoods, fenders or covers can be flammable or explosive. Repair such components in a well ventilated area away from open flames or sparks.

Fire Extinguishers



Know where fire extinguishers and first aid kits are located and how to use them. Inspect the fire extinguisher and service the fire extinguisher regularly. Obey the recommendations on the instructions plate.

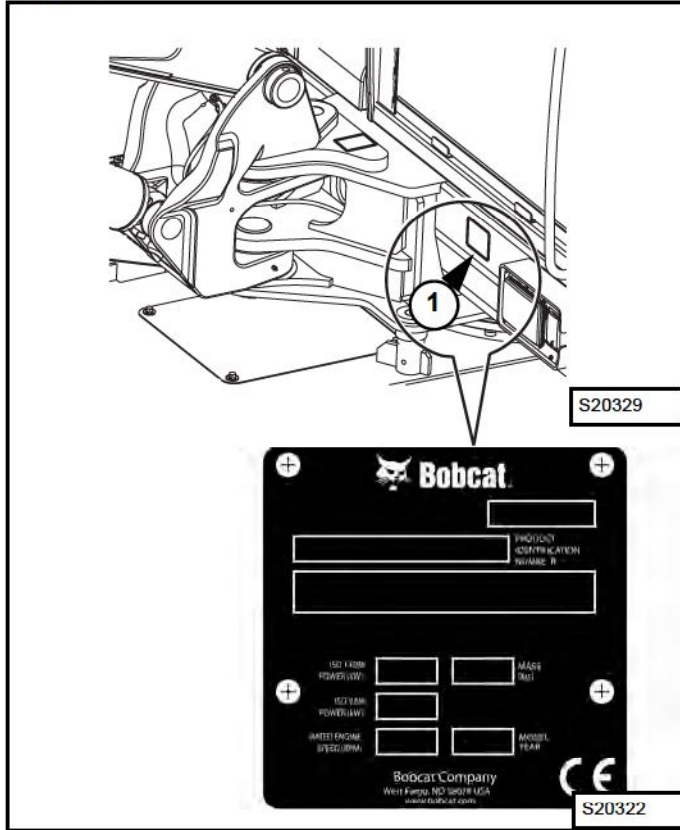
SI EXC-0308 SM

SERIAL NUMBER LOCATIONS

Always use the serial number of the excavator when requesting service information or when ordering parts.

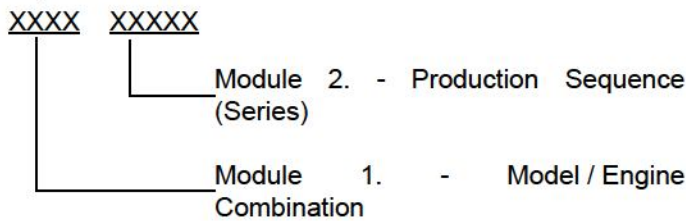
Excavator Serial Number

Figure 1



The excavator serial number plate (Item 1) [Figure 1] is located on the front left hand corner of the frame.

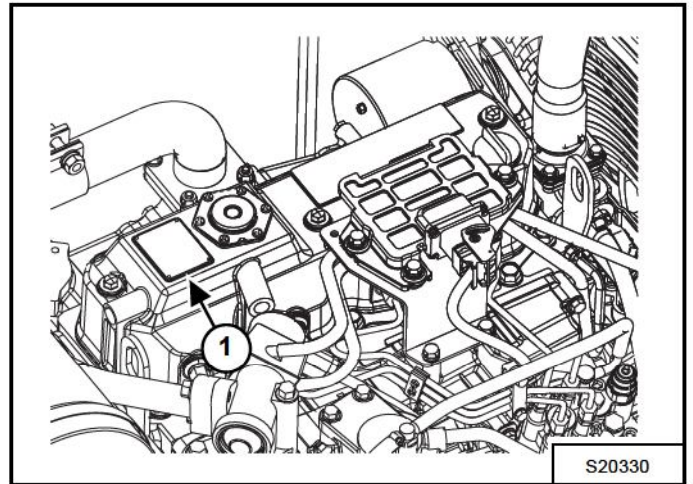
Explanation of Excavator Serial Number:



1. The four-digit Model / Engine Combination Module number identifies the model number and engine combination.
2. The five-digit Production Sequence Number identifies the order in which the excavator is produced.

Engine Serial Number

Figure 2



The engine serial number plate (Item 1) [Figure 2] is located on top of the engine.

Dealer Copy - Not for Resale

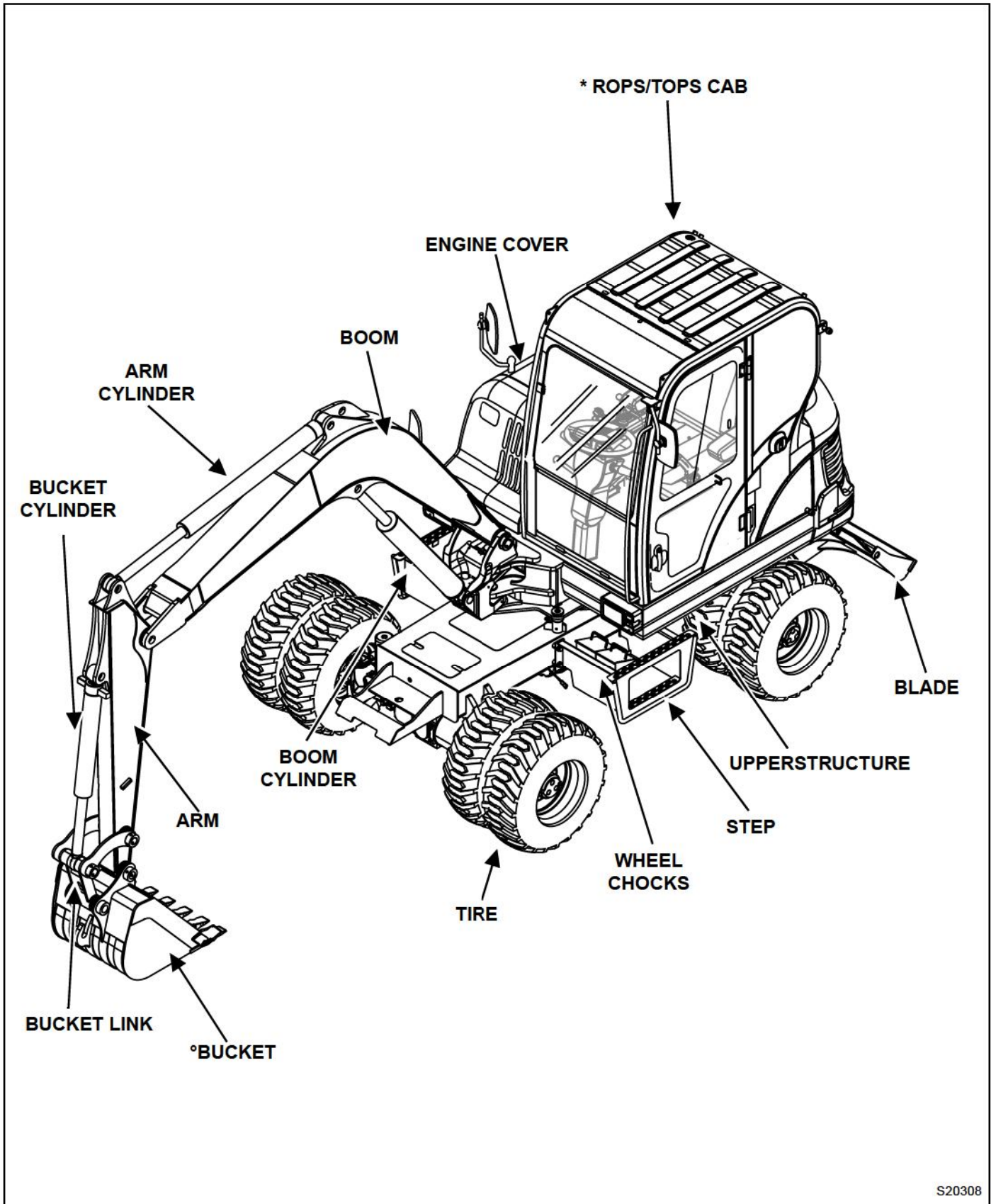
DELIVERY REPORT

Figure 3

The diagram shows a form titled "DELIVERY REPORT". The form is enclosed in a rectangular border. At the top right, there is a section labeled "DELIVERY REPORT" with several lines of text. Below this, on the left side, is a section labeled "WARNING" with a dark background and white text. The main body of the form consists of multiple columns of horizontal lines, representing text input fields. At the bottom right of the form, there is a small box containing the alphanumeric code "B-16315".

The Delivery Report items must be explained to the owner / operator by the dealer. The dealer is to complete the form and the owner / operator signs the form to indicate his understanding **[Figure 3]**.

BOBCAT EXCAVATOR IDENTIFICATION



Dealer Copy -- Not for Resale

S20308

*ROPS, TOPS (Roll Over Protective Structure / Tip Over Protective Structure) as standard equipment. The ROPS/TOPS meets ISO 3471 and ISO 12117.

°Several different buckets and other attachments are available from your Bobcat Excavator dealer.

AIR CLEANER 10-60-1
 Cleaning Outer And Inner Filters 10-60-1
 Replacing The Filters 10-60-2

ALTERNATOR BELT 10-140-1
 Adjusting The Alternator Belt 10-140-1
 Belt Replacement 10-140-2

CONTROL CONSOLE LOCKOUTS 10-160-1
 Inspection And Maintenance 10-160-1
 Safety Precautions 10-160-1

COOLING SYSTEM 10-70-1
 Checking The Coolant Level 10-70-1
 Cleaning The Cooling System 10-70-1
 Replacing The Coolant 10-70-2

DRAINING AND REFILLING TRANSMISSION AND AXLE 10-120-1
 Draining And Refilling Front Axle Case Oil 10-120-1
 Draining And Refilling Hub Reduction Gear Oil 10-120-2
 Draining And Refilling Rear Axle Case Oil 10-120-2
 Draining And Refilling Transmission Fluid 10-120-1

ENGINE LUBRICATION SYSTEM 10-90-1
 Checking Engine Oil 10-90-1
 Replacing Oil And Filter 10-90-2

EXCAVATOR STORAGE AND RETURN TO SERVICE 10-170-1
 Return To Service 10-170-1
 Storage 10-170-1

FUEL SYSTEM 10-80-1
 Biodiesel Blend Fuel 10-80-1
 Filling The Fuel Tank 10-80-2
 Fuel Specifications 10-80-1
 Removing Air From The Fuel System 10-80-3
 Removing Water From The Fuel Filter 10-80-3
 Replacing The Fuel Filter 10-80-4

HYDRAULIC SYSTEM 10-100-1
 Checking And Adding Hydraulic Oil 10-100-1
 Replacing Hydraulic Oil 10-100-4
 Replacing Pilot Filter 10-100-3
 Replacing The Hydraulic Oil Return Filter 10-100-2

LIFTING AND BLOCKING THE EXCAVATOR 10-10-1
 Procedure 10-10-1

Continued On Next Page

Dealer Copy - Not for Resale

SAFETY AND MAINTENANCE (CONT'D)

LIFTING THE EXCAVATOR	10-12-1
LUBRICATION OF THE HYDRAULIC EXCAVATOR	10-110-1
Grease Boom Swing Cylinder	10-110-3
Grease Driveshafts	10-110-4
Grease Front Axle Steering Knuckle	10-110-5
Lubrication Locations	10-110-1
RIGHT SIDE COVER	10-41-1
Opening And Closing The Right Side Cover	10-41-1
SEAT BELT	10-150-1
Inspection And Maintenance	10-150-1
SERVICE SCHEDULE	10-50-1
Chart	10-50-1
STOPPING THE ENGINE AND LEAVING THE EXCAVATOR ...	10-180-1
TAILGATE	10-40-1
Opening And Closing The Tailgate	10-40-1
TRANSPORTING THE EXCAVATOR	10-20-1
Loading Onto Transport Vehicle	10-20-1
UPPERSTRUCTURE SLEW LOCK	10-11-1
Boom Swing Lock Pin	10-11-2
Upperstructure Slew Lock Pin	10-11-1

LIFTING AND BLOCKING THE EXCAVATOR

Procedure

WARNING

Unsafe use of the excavator while making rated lifts could cause serious, potentially fatal injuries or extensive damage to the machine or nearby property. Do not let anyone operate the machine unless they've been properly trained and understand the information in the Operation and Maintenance Manual.

To lift safely while in Working Mode, the following items must be evaluated by the operator and the work site crew.

- Condition of ground support.
- Excavator configuration and attachments.
- Weight, lifting height and lifting radius.
- Safe rigging of the load.
- Proper handling of the suspended load.

Tag lines on opposite sides of the load can be very helpful in keeping a suspended load secure, if they are anchored safely to control points on the ground.

WARNING

NEVER wrap a tag line around your hands or body. NEVER rely on tag lines or make rated lifts when wind gusts are more than 30 mph (48.3 km/hr.). Be prepared for any wind gust when working with loads that have a large surface area.

Always engage the Working Mode control on the Instrument Panel before using the excavator for lifting work.

WARNING

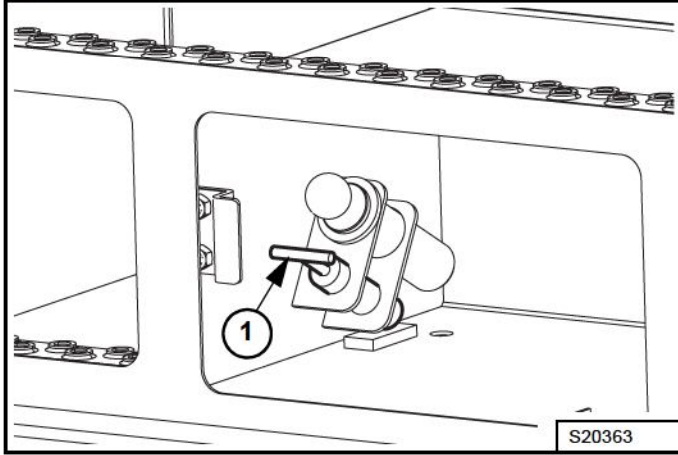
If you need more information or have any questions or concerns about safe operating procedures or working the excavator correctly in a particular application or in the specific conditions of your individual operating environment, please consult your local BOBCAT representative.

UPPERSTRUCTURE SLEW LOCK

Upperstructure Slew Lock Pin

This wheel excavator is equipped with a swing lock device, which should be used when transporting or traveling on streets. The device consists of a pin and two holes which must be aligned and through which the pin is placed. This keeps the swing device from accidentally moving and causing damage to other vehicles or people in its path.

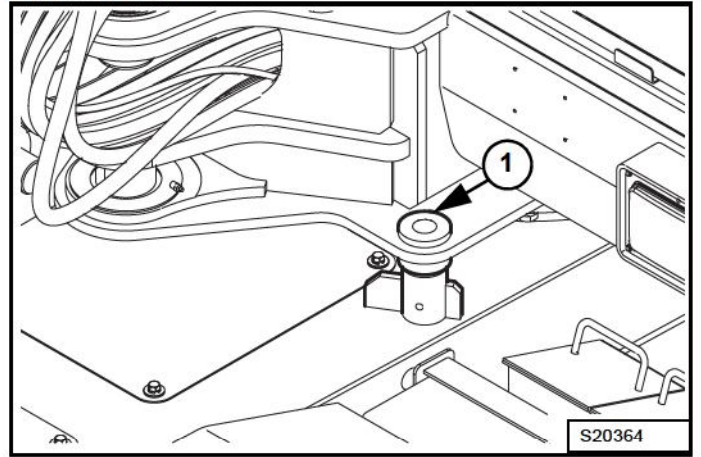
Figure 10-11-1



The swing lock pin (Item 1) [Figure 10-11-1] is stored inside toolbox in the right step.

NOTE: The upperstructure must be in the straight forward or straight backward position for the upperstructure to lock.

Figure 10-11-2



Make sure the upperstructure is facing forward. Align upper structure of machine with lower frame and make sure holes are in alignment. Insert lock pin into hole (Item 1) [Figure 10-11-2] on the upper structure of machine.



AVOID INJURY

The upperstructure slew lock lever must be engaged when transporting the machine.

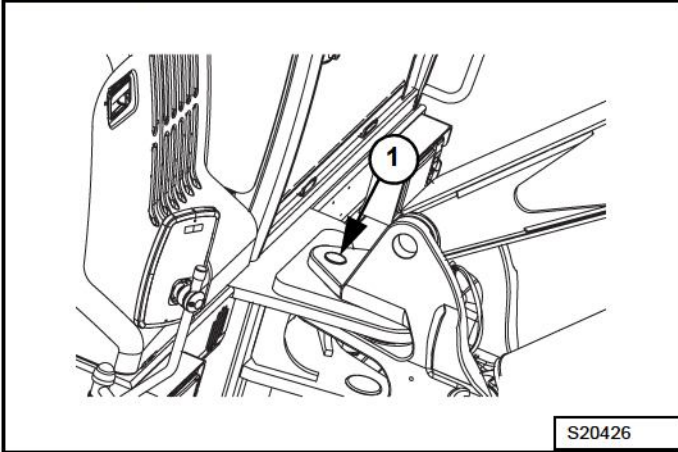
W-2197-0904

UPPERSTRUCTURE SLEW LOCK (CONT'D)

Boom Swing Lock Pin

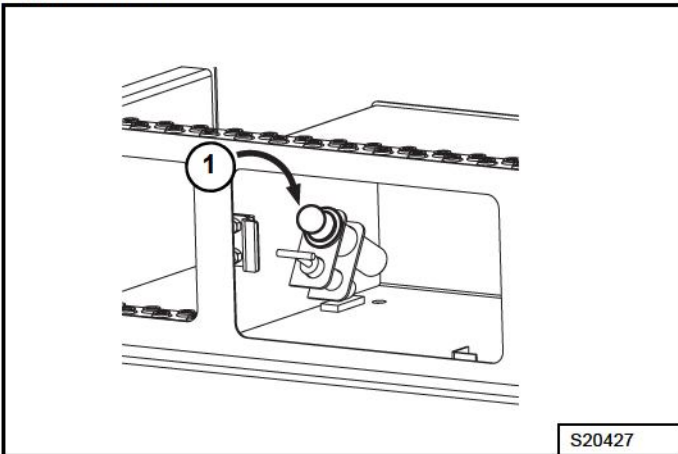
This wheel excavator is equipped with a boom swing lock device, which should be used when transporting or traveling on streets. This device consists of a pin and two holes which must be aligned and through which the pin is placed. This keeps the boom swing device from accidentally moving and causing damage to other vehicles or people in its path.

Figure 10-11-3



The boom swing lock pin (Item 1) [Figure 10-11-3] is stored inside toolbox in the right step.

Figure 10-11-4



Align boom swing bracket with upper structure of machine and make sure holes are in alignment.

Insert pin (Item 1) [Figure 10-11-4] into hole (Item 1) [Figure 10-11-3] behind of boom swing bracket.

LIFTING THE EXCAVATOR

Put all the controls in neutral and engage the upperstructure slew lock (See "UPPERSTRUCTURE SLEW LOCK" on page 10-11-1).

WARNING

AVOID INJURY OR DEATH

- Use a lifting fixture with sufficient capacity for the weight of the excavator plus any added attachments.
- Maintain center of gravity and balance when lifting.
- Do not swing boom or upperstructure. Engage the swing locking lever.
- Never lift with operator on machine.

W-2202-0595

1. Refer to Specification section of Operation and Maintenance Manual for information on weight and dimensions.
2. Use properly rated cables and slings for lifting.
3. Position machine for a level lift.
4. Lifting cables should have a long enough length to prevent contact with the machine. Spreader bars may be required.

NOTE: If spreader bars are used, be sure that cables are properly secured to them and that the angle of the cables is factored into the lift strength.

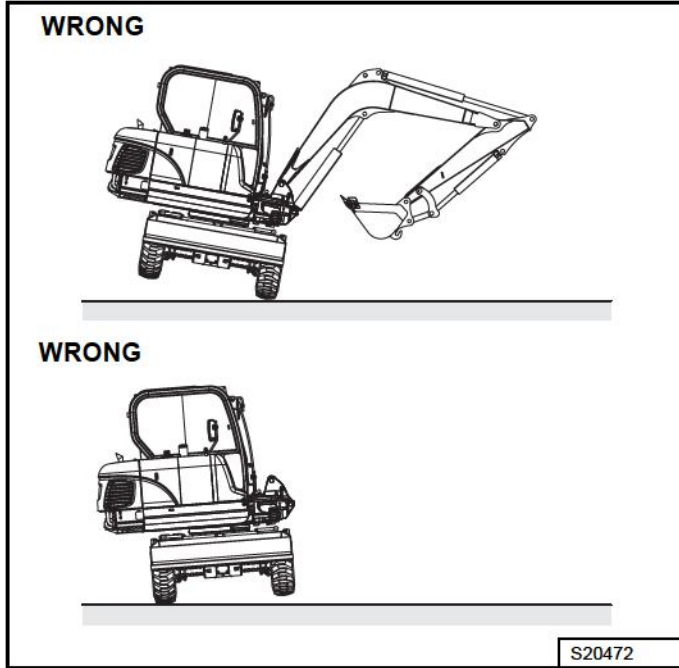
TRANSPORTING THE EXCAVATOR

Loading Onto Transport Vehicle

Obey all local, state or federal regulations for the transportation of the excavator. If unsure of regulations check with local authorities.

Check the intended route for road width, overhead clearances, weight restrictions, and traffic control regulations. Special approval or permits may be required.

Figure 10-20-1

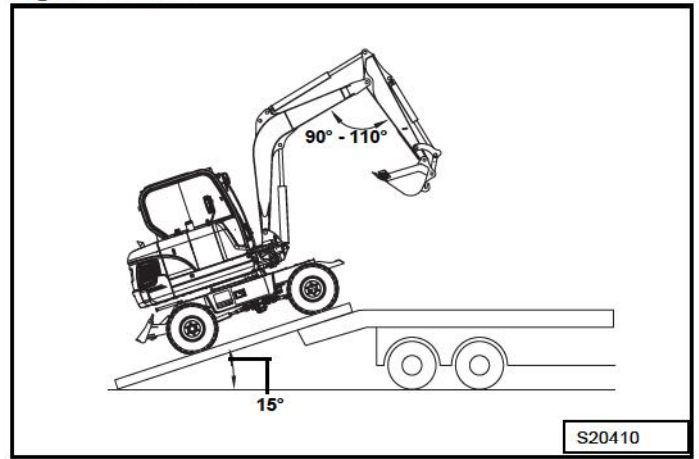


BOBCAT warns any user that removal of the counterweight from the machine, front attachment or any other part, may affect the stability of the machine. This could cause unexpected movement, resulting in death or serious injuries. BOBCAT is not liable for any misuse.

Never remove counterweight or front attachment unless the upper structure is in-line with the lower structure.

Never rotate the upper structure once the counterweight or front attachment has been removed.

Figure 10-20-2



Make sure that trailer is parked on a firm and level surface [Figure 10-20-2].

Make sure that ramps that are being used are designed to handle the weight of the excavator. If required, add blocking under the ramp to provide additional support.

The ramp angle should not exceed 15. Ramps steeper than this may cause a problem when loading or unloading.



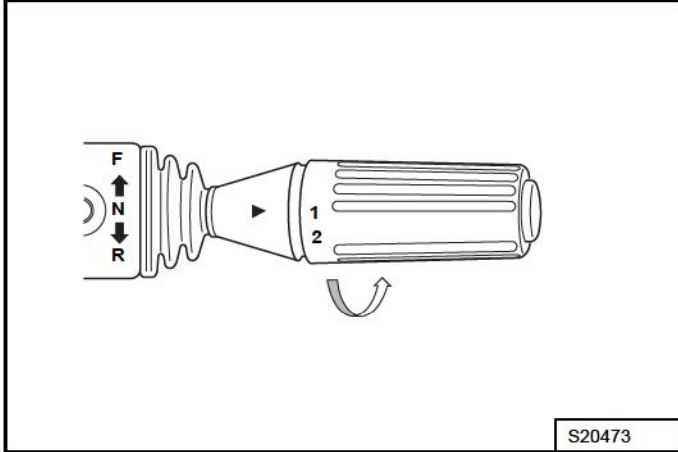
AVOID SERIOUS INJURY OR DEATH
Adequately designed ramps of sufficient strength are needed to support the weight of the machine when loading onto a transport vehicle. Wood ramps can break and cause personal injury.

W-2058-0807

TRANSPORTING THE EXCAVATOR (CONT'D)

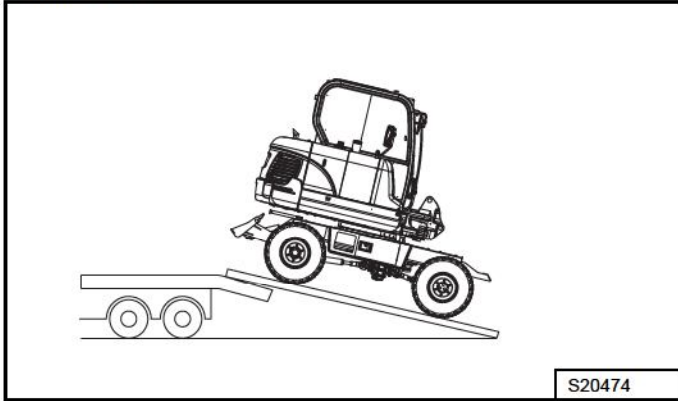
Loading Onto Transport Vehicle (Cont'd)

Figure 10-20-3



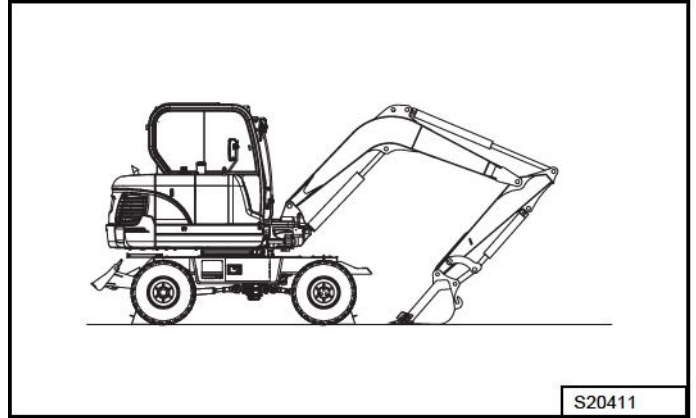
Set the travel speed selector switch to 1 [Figure 10-20-3]. Position and step on the accelerator pedal slowly.

Figure 10-20-4



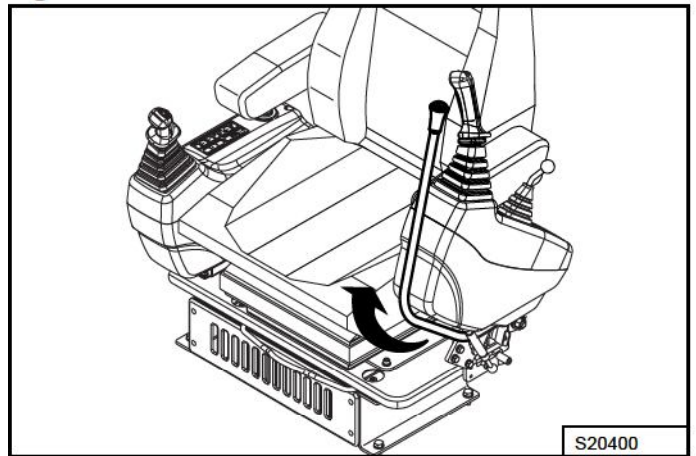
The unit does not require disassembly for normal over the road transportation. If the boom and arm need to be removed, the counterweight will place more weight to the rear of the machine. Make sure to back the excavator onto the trailer so the counterweight end of the excavator is positioned on the ramp first [Figure 10-20-4].

Figure 10-20-5



Store the front attachment in the Transport position and set the function lock in the TRANSPORT position [Figure 10-20-5].

Figure 10-20-6

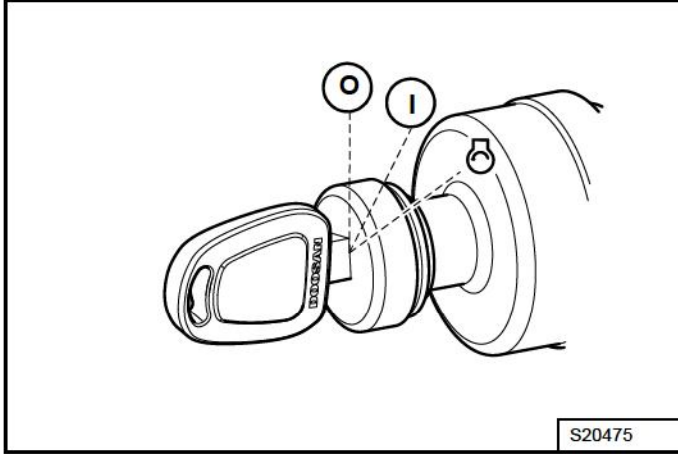


Set safety lever and stand on LOCK position. Set parking brake switch to the I position and ram cylinder toggle switch in the LOCK position [Figure 10-20-6].

TRANSPORTING THE EXCAVATOR (CONT'D)

Loading Onto Transport Vehicle (Cont'd)

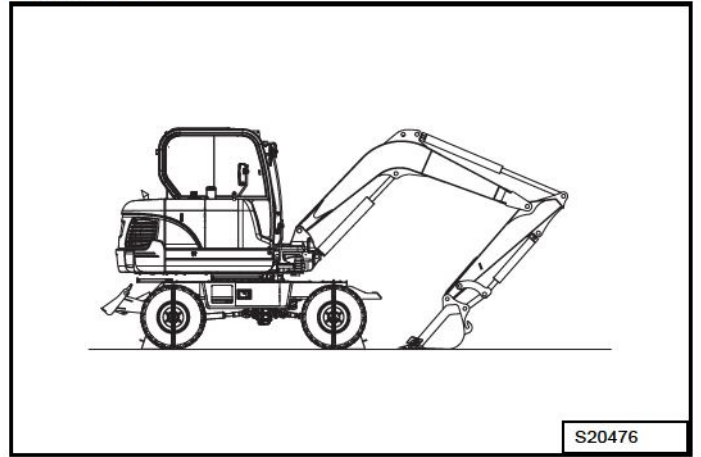
Figure 10-20-7



Shut down engine by turning key to O (OFF) position [Figure 10-20-7].

Remove key from starter switch.

Figure 10-20-8



Before transporting the excavator, make sure that slew lock pin and boom swing lock pin have been engaged (See "UPPERSTRUCTURE SLEW LOCK" on page 10-11-1). This will prevent the excavator from accidentally rotating during transportation.

Be sure to secure the excavator onto the trailer before transporting. Use chains or cable tie-downs as required by local transportation laws. Use the wheel chocks supplied with the machine to secure machine.

Refer to the Dimensions for Transportation table for overall machine height and width measurements. Be sure to position the excavator as shown. If not transported in this position, the height measurements may be different.

TAILGATE

Opening And Closing The Tailgate

WARNING

AVOID INJURY OR DEATH

Never service or adjust the machine when the engine is running unless instructed to do so in the manual.

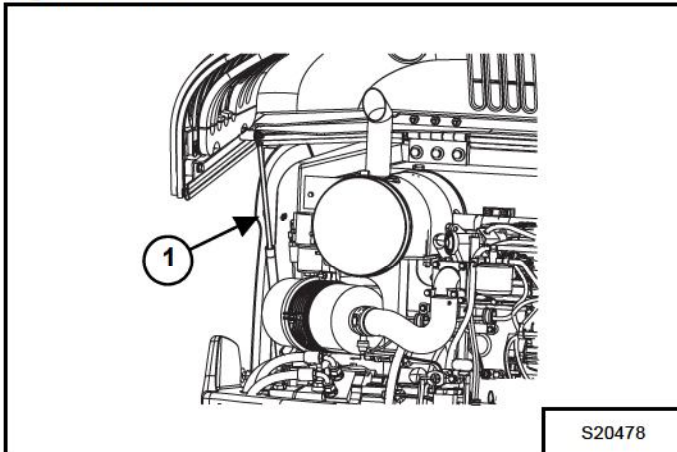
W-2012-0497

WARNING

Keep the rear door closed when operating the machine. Failure to do so could seriously injure a bystander.

W-2020-1285

Figure 10-40-1



Release the latch and pull the tailgate open.

The tailgate is supported by a gas spring (Item 1) [Figure 10-40-1] when it opens.

When closing cover make sure that latch engages.

Close the tailgate before operating the excavator.

RIGHT SIDE COVER

Opening And Closing The Right Side Cover

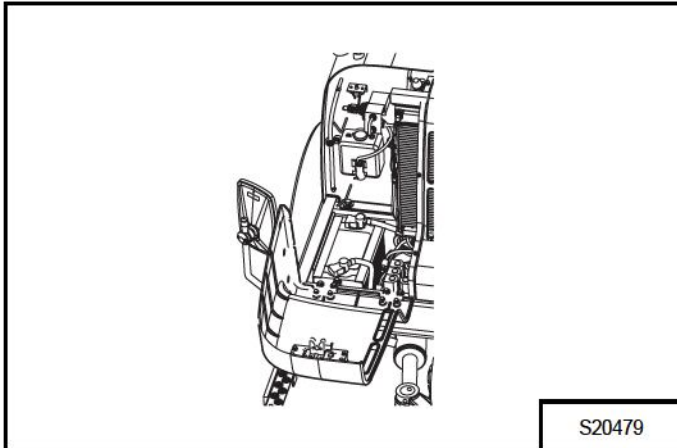
WARNING

AVOID INJURY OR DEATH

Never service or adjust the machine when the engine is running unless instructed to do so in the manual.

W-2012-0497

Figure 10-41-1



The right side cover is supported by a wire cable.

Hold the cover until it is fully opened to prevent damage to wire cable and linkage (Protect the wire cable and linkage from shock) [Figure 10-41-1].

Close the right side cover before operating the excavator.



Suggest:

If the above button click is invalid.

Please download this document

first, and then click the above link

to download the complete manual.

Thank you so much for reading

SERVICE SCHEDULE

Chart

Maintenance work must be done at regular intervals. Failure to do so will result in excessive wear and early failures. The service schedule is a guide for correct maintenance of the Bobcat Excavator.



WARNING

AVOID INJURY OR DEATH

Instructions are necessary before operating or servicing machine. Read and understand the Operation & Maintenance Manual, Operator's Handbook and signs (decals) on machine. Follow warnings and instructions in the manuals when making repairs, adjustments or servicing. Check for correct function after adjustments, repairs or service. Untrained operators and failure to follow instructions can cause injury or death.

W-2003-0807

SERVICE SCHEDULE		HOURS						
ITEM	SERVICE REQUIRED	10	50	100	250	500	[6] 1000	[7] 2000
Engine Coolant	Check coolant level. Add premixed coolant as needed.							
Engine Oil	Check the engine oil level and add as needed.							
Hydraulic Fluid, Hoses and Tubelines, Reservoir Breather Cap	Check the hydraulic fluid level and add as needed. Check for damage and leaks. Repair or replace as needed.							
Engine Air Filter and Air System	Check condition indicator and empty dust cup as needed. Check air system for leaks.							
Fuel System	Check fuel level and add as needed. Check for damage and leaks.							
Fuel Pre-Filter	Drain water and sediment from fuel pre-filter. Replace as needed.							
Indicators and Lights	Check for correct operation of all indicators and lights							
Tires	Check and adjust tire pressure as needed and inspect for signs of damage or abnormal wear.							
Operator Cab	Check condition. Check mounting hardware.							
Seat Belt	Check condition. Check mounting hardware.							
Console Lockout	Check console lockout for proper operation.							
Safety Signs and Safety Treads	Check for damaged signs (decals) and safety treads. Replace any signs or safety treads that are damaged or worn.							
Cooling Fan Blade	Inspect the Cooling Fan Blade.							
Cab Air Filter	Clean the filter as needed.							
Battery	Check battery, cables, connections and electrolyte level. Add distilled water as needed.							
Fuel Tank	Drain water and sediment from fuel tank.							
Pivot Points	Grease the swing bearing, front axle pin, dozer blade pins, front attachment pins and boom swing bracket.	[1] [2]						
Engine Drive Belt	Check condition for wear. Check the tension of the belt and adjust as needed.							
Fuel Filter	Replace the fuel filter.		[3]					
Engine Oil and Filter	Replace oil and filter. Use CD or better grade oil and Bobcat filter.		[3]					
Transmission Gear Oil	Check Oil level and add as needed							
Pivot Points	Grease the boom pins, arm pins and boom swing pins.	[1] [2]						
Radiator, Oil Cooler, *A/C	Clean debris from the radiator fins.							
Accessory Drive Belt	Replace belt.			[4]				
Fuel Tank filter	Replace the fuel tank filter.							
Hydraulic Oil Return Filter	Replace the hydraulic oil return filter.				[5]			
Pilot Oil Filter	Replace the pilot oil filter.				[5]			
Air Conditioner Filter	Replace the air conditioner filter.							
Alternator and Starter	Check the alternator and starter connections.			[4]				
Pivot Points	Grease the swing gear and pinion, front axle knuckle (2 x 2 points) and drive shaft.	[1] [2]						
Axle Gear Oil	Replace the front and rear axle gear oil.			[4]				
Hub Reduction Gear Oil	Replace the front and rear hub reduction gear oil.			[4]				
Transmission Gear Oil	Replace the transmission gear oil.			[4]				
Hydraulic Oil Tank Filter	Replace the Hydraulic Oil Tank Filter.		[3]					
Air Conditioner System	Check the air conditioner refrigerant. Replace as needed.							
Engine Valves	Check and adjust the engine valve clearance.							
Hydraulic System	Replace the hydraulic fluid and filters. Clean the reservoir.							
Hydraulic Oil Tank System	Replace the Hydraulic Oil Tank Breather. Clean the oil suction strainer. Replace as needed.							
Engine Cooling System	Drain and flush the cooling system. Replace the coolant.							Every two years

Dealer Copy -- Not for Resale

<https://www.ebooklibonline.com>

Hello dear friend!

Thank you very much for reading.

Enter the link into your browser.

The full manual is available for immediate download.

<https://www.ebooklibonline.com>