

8465 AUTOMATIC, 8455/8465 WITH TRACTOR HYDRAULICS, 8460 ROUND BALER

Table of Contents

DIVISION / SECTION	SECTION NO.	FORM NO.
1 GENERAL		
Index		Rac 7-64980
Introduction	1001	Rac 7-64990
Safety Precautions, Machine Specifications, and Standard Torque Specifications	1002	Rac 7-65000
Servicing	1003	Rac 7-65011
Decals	1004	Rac 7-65020
2 DRIVE SYSTEM		
Index		Rac 7-65030
Drive System - 8465 Automatic Baler	2001	Rac 7-65040
Drive System - 8455/8465 Baler with Tractor Hydraulics	2010	Rac 7-65050
Drive System - 8460 Baler	2020	Rac 7-65060
3 PICKUP		
Index		Rac 7-65070
Pickup	3001	Rac 7-65080
4 ELECTRICAL SYSTEM		
Index		Rac 7-65090
Electrical Systems - 8465 Automatic Baler	4001	Rac 7-65100
Electrical Systems - 8455/8465 Baler with Tractor Hydraulics	4010	Rac 7-65110
Electrical Systems - 8460 Baler	4020	Rac 7-65120
5 TAILGATE AND EJECTOR		
Index		Rac 7-65130
Tailgate and Ejector	5001	Rac 7-65140
6 BALE WRAPPER		
Index		Rac 7-65150
Bale Wrapper - 8465 Automatic Baler	6001	Rac 7-65160
Bale Wrapper - 8455/8465 Baler with Tractor Hydraulics	6010	Rac 7-65170
Bale Wrapper - 8460 Baler	6020	Rac 7-65180



DIVISION / SECTION

SECTION NO.

FORM NO.

7 MAINFRAME, BALE TENSION, AND WHEELS

Index Rac 7-65190
Mainframe, Bale Tension, and Wheels 7001 Rac 7-65200

8 HYDRAULIC SYSTEM

Index Rac 7-65211

Hydraulic Components - 8465 Automatic Baler 8001 Rac 7-65220

Hydraulic System Troubleshooting - 8465 Automatic Baler 8002 Rac 7-65230

Hydraulic System Operation, Description, and Control

Valves - 8455/8465 Baler with Tractor Hydraulics

8455 - S/N CFH0080001 Thru CFH0080405

8465 - S/N CFH0074001 Thru CFH0074875..... 8010 Rac 7-65241

Hydraulic System Troubleshooting - 8455/8465 Baler
with Tractor Hydraulics

8455 - S/N CFH0080001 Thru CFH0080405

8465 - S/N CFH0074001 Thru CFH0074875..... 8011 Rac 7-65251

Hydraulic System Operation, Description, and Control

Valves - 8455/8465 Baler with Tractor Hydraulics

8455 - S/N CFH0080406 and Later

8465 - S/N CFH0074876 and Later 8012 Rac 7-81510

Hydraulic System Troubleshooting - 8455/8465 Baler
with Tractor Hydraulics

8455 - S/N CFH0080406 and Later

8465 - S/N CFH0074876 and Later 8013 Rac 7-81520

Hydraulic System - 8460 Baler 8020 Rac 7-65260

DIVISION 1

SECTION INDEX

1

SECTION TITLE	SECTION NUMBER
Introduction	1001
Safety Precautions, Machine Specifications, and Standard Torque Specifications	1002
Servicing	1003
Decals	1004

<https://www.ebooklibonline.com>

Hello dear friend!

Thank you very much for reading.

Enter the link into your browser.

The full manual is available for immediate download.

<https://www.ebooklibonline.com>

Section 1001

INTRODUCTION

TABLE OF CONTENTS

General Information	1001-2
To Our Customer	1001-2
Introduction	1001-2
Serial Number Location	1001-2
Replacement Parts	1001-3
U. S. and Metric Units	1001-3
Table of Contents	1001-3
Page Numbers	1001-3

GENERAL INFORMATION

To Our Customer

We appreciate your confidence in our farm equipment and thank you for your patronage. In preparing this manual, we hope we have furnished you with a valuable tool for operating and maintaining this fine machine. Use this manual as your guide. Practicing the instructions given here will result in many years of dependable service from your machine.

Your Dealer can give you assistance with parts and specially trained personnel to assist you in repair and maintenance. Call your Dealer if you need any assistance or information.

Introduction

This service manual has been prepared with the latest service information available at the time of publication. Read the service manual carefully before doing any service on the baler. This manual is one of the most important tools available to the service technician.

“Right” and “Left” as used throughout this manual is determined by facing in the direction the machine will travel when in use.

The photos, illustrations, and data used in this manual were current at the time of printing, but due to possible production changes, your machine can vary slightly. The Manufacturer reserves the right to redesign and change the machine as necessary without notification.

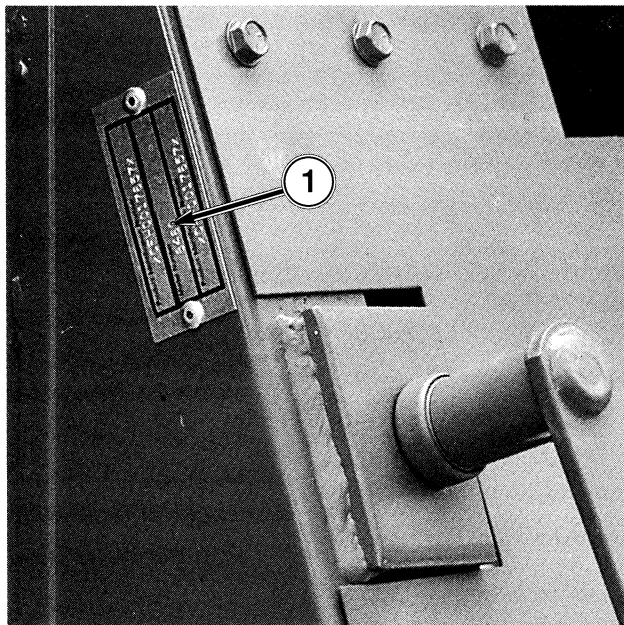


WARNING

Some pictures in this manual show the machine with safety shields removed to allow for a better view of the subject of the picture. The machine must never be operated with any of the safety shields removed.

Serial Number Location

The serial number is important information about the machine. You will need the serial number when ordering some replacement parts. The serial number plate is located at the front of the baler on the left inner panel.



56RB-89076-9

1. Serial Number Plate

Replacement Parts

To obtain prompt, efficient service, always remember to give the dealer the following information:

1. Correct part number description.
2. Model number of the machine.
3. Serial number of the machine.

U.S. and Metric Units

Measurements are given in U.S. units followed by their equivalent in metric units. Hardware sizes are given in inches for U.S. hardware and millimeters for metric hardware.

Table of Contents

A Table of Contents is in the front of this manual. The Table of Contents shows the divisions and the sections that are in each division. The individual divisions and sections also have a Table of Contents.

Page Numbers

All page numbers are made of two numbers separated by a dash, such as 4002-9. The number before the dash is the section number. The number following the dash is the page number in that section. Page numbers will be at the upper right or left of each page.

Section 1002

SAFETY PRECAUTIONS, MACHINE SPECIFICATIONS, AND STANDARD TORQUE SPECIFICATIONS

TABLE OF CONTENTS

8465 Automatic Round Baler	1002-2
Safety Precautions	1002-2
Machine Specifications	1002-5
8455/8465 Round Baler with	
Tractor Hydraulics	1002-6
Safety Precautions	1002-6
Machine Specifications	1002-9
8460 Round Baler	1002-12
Safety Precautions	1002-12
Machine Specifications	1002-15
Standard Torque Specifications	1002-16
U.S. Standard Hardware	1002-16
Metric Hardware	1002-17

8465 AUTOMATIC ROUND BALER

Safety Precautions

Understand that your safety and the safety of other persons is measured by how you service and operate this machine. Know the positions and operations of all controls before you try to operate this machine. **MAKE SURE YOU CHECK ALL CONTROLS IN A SAFE AREA BEFORE STARTING YOUR WORK.**

READ THIS MANUAL COMPLETELY and make sure you understand the controls. All equipment has a limit. Make sure you understand the speed, brakes, steering, stability, and load characteristics of this machine and your power unit before you start to operate the machine.

The safety information given in this manual does not replace safety codes, insurance needs, state and local laws. Make sure your machine has the correct equipment needed by the local laws and regulations.



THIS SAFETY ALERT SYMBOL INDICATES IMPORTANT SAFETY MESSAGES IN THIS MANUAL. WHEN YOU SEE THIS SYMBOL, CAREFULLY READ THE MESSAGE THAT FOLLOWS AND BE ALERT TO THE POSSIBILITY OF PERSONAL INJURY OR DEATH.

Read and understand all operating instructions and precautions before attempting to operate the machine.

Before doing any maintenance or service work on the machine, you must:

- Park machine on a solid level surface.
- Close the tailgate.
- Disengage the PTO.
- Put the transmission in PARK or apply the tractor parking brake.
- Shut off the baler control console.
- Stop the tractor engine. Remove and take the tractor ignition key with you.
- Put the tailgate lockout switch in the LOCKED position.
- **Look and Listen!** Make sure all moving parts are stopped.

Always disengage the PTO, have the baler control console power switch in the OFF position, and shut off the engine before:

1. leaving tractor seat
2. lubricating
3. cleaning the machine
4. adjusting the machine.

When parking the machine, always remove and take the tractor ignition key with you.

Make sure the slotted nut and cotter pin are installed on the bottom of the hitch pin. Make sure the klik pin is installed in the top of the hitch pin when the baler is connected to the tractor.

Always install the safety chain between the baler and the tractor drawbar.

Do not service or adjust the machine until all moving parts of the baler have come to a complete stop.

When working on the machine with the tailgate open, always have the tractor PTO disengaged, the baler control console power switch in the OFF position, and the tractor engine shut off. Put the tailgate lockout switch in the LOCKED position.

Always unload the bale from the bale chamber before raising or working under the machine.

After lubricating, servicing, or adjusting the machine, make sure all tools and equipment have been removed.

Never check belts or chains while tractor is running.

All safety shields and guards must be in place before operating the machine.

Always remain seated when operating the machine.

Entanglement in a rotating drive line can cause serious injury or death. Do not operate the machine with the drive line shields removed.

Never start the tractor with the PTO engaged or the baler control console power switch in the ON position.

Always operate the baler with the baler control console power switch in the ON position.

Be aware of the size of the baler when maneuvering the baler. Make sure there is sufficient space available for safe operation.

Make sure the tractor is in safe operating condition with adequate braking capabilities, especially when operating on uneven terrain.

Before raising the tailgate, make sure the baler is securely fastened to the tractor drawbar. The baler will have a negative tongue weight when the tailgate is raised. This can cause the baler to tip to the rear, causing personal injury or machine damage.

Stay at least 12 FT (3.7 m) away from the tailgate and ejector at all times. The tailgate and ejector operate faster than you can move away.

Always make sure the area around the tailgate and the ejector is clear for at least 12 FT (3.7 m) before opening the tailgate and unloading the bale.

Do not remove twine from the pickup area or bale chamber while the machine is running.

Always keep hands, feet, and clothing away from moving parts. Never wear loose clothing while operating the machine.

When moving bales, never use a front-end loader that is not equipped with a grapple. Use the grapple to prevent the bale from rolling down the loader frame onto the operator. If a front-end loader is used, always keep the load close to the ground to avoid off-balancing the tractor.

Never unload or store bales where the bales can roll.

Hydraulic fluid escaping under pressure can have sufficient force to penetrate the skin, causing serious injury. Be sure to relieve all pressure from hydraulic lines before disconnecting. Before applying pressure to the system, make sure all connections are tight and hoses and lines have not been damaged.

Hydraulic fluid escaping from a very small hole can be almost invisible. Always use a piece of cardboard or wood, rather than hands, to search for suspected leaks. If not treated immediately, serious infection or reaction can develop. Therefore, if injured by escaping fluid, see a doctor at once.

To reduce the risk of fire or the risk of damage if fire occurs, do the following:

- **Equip your baler with a water fire extinguisher available from your dealer.**
- **Check baler at least daily for unusual noise which can indicate a failed bearing or interference causing heat buildup.**
- **When finishing baling and before leaving the baler, remove the bale from the bale chamber. Raise the tailgate and turn the tailgate lockout valve to the LOCKED position. Check for accumulation of hay or hot spots in the bale chamber and pickup area. Remove hay accumulation. Turn the tailgate lockout switch to the UNLOCKED position and lower the tailgate.**
- **If fire occurs while baling, eject the bale, move tractor and baler upwind and away from the bale 40 feet (12m). Make sure the tailgate is in the raised position. Turn the tailgate lockout switch to the LOCKED position. Use a fire extinguisher or other water source to put out the fire.**

Be aware of the transport width and be careful when transporting the machine on narrow roads and across narrow bridges. See Specifications for the overall dimensions.

Do not carry riders or ride on the machine at any time.

Limit towing speed of a loaded machine to 10 mph (16 kp/h).

Limit towing speed of an unloaded machine to 20 mph (32 kp/h).

Always have the SMV (slow moving vehicle) emblem clean and visible. Use adequate lights or safety warnings when transporting the machine on public roads. Check with local law enforcement agencies for special requirements.

See the Operator's Manual for information about safe transporting of the machine.

Machine Specifications

MODEL 8465 Automatic Round Baler

WEIGHTS AND DIMENSIONS

Weight (approximate) 5750 LB (2611 kg)
 with optional mesh wrap 6800 LB (3087 kg)
 Tongue weight (empty) 1015 LB (461 kg)
 with optional mesh wrap 1005 LB (456 kg)
 Length (overall) 159.23 IN (4044 mm)
 with optional mesh wrap 174.3 IN (4427 mm)
 Height (overall) 112.5 IN (2858 mm)
 Width (overall) 110.87 IN (2816 mm)

BALE SIZE

Bale diameter
 minimum 50 IN (1270 mm)
 maximum 75 IN (1905 mm)
 Bale width 61.5 IN (1562 mm)
 Bale weight (approximate*) up to 2200 LB (999 kg)
 Bale density (average*) 11 LB/FT³ (176 kg/m³)
 Capacity (approximate*) ... up to 26 TON/hr (23.5 t/hr)
 * *Depends on crop and moisture conditions.*

BALE CHAMBER

Width of chamber 61.5 IN (1562 mm)
 Number of belts 8
 Belt width 7 IN (178 mm)
 Belt length 562.5 IN (14 288 mm)
 Number of bale forming rolls 14
 Type of rolls steel
 Bale overfill protection yes
 Bale size indicator yes
 Bale full audio alert yes
 Drive clutch - automatic or manual mode yes
 Powered riens 9

TIRES

Tire size 31 x 13.5 x 8 Ply Terra-Rib
 Tire pressure 35 psi (2.4 bar)
 Wheel nut size 9/16-18
 Wheel nut torque 120 LB·FT (165 N·m)

DRIVES

PTO speed
 standard 540 rpm (r/min)
 optional conversion 1000 rpm (r/min)
 Pickup belt and chain
 Forming belts 2 drives, chain
 Gearbox output shaft 730 rpm (r/min)

PICKUP

Width
 gathering 73.23 IN (1860 mm)
 tine to tine 59.8 IN (1519 mm)
 Number of tine bars 4
 Number and type of tines 48, double
 Tine control cam track
 Windguard standard

BALE WRAPPING MECHANISM

Type
 standard twine
 optional mesh
 Number of twine balls 4
 Type of twine plastic or sisal

TRACTOR REQUIREMENTS

PTO speed
 standard 540 rpm (r/min)
 optional conversion 1000 rpm (r/min)
 PTO horsepower, minimum 70 PTO hp (52 kW)
 Hydraulics self contained, single remote required
 if equipped with a hydraulic pickup lift
 Electrical system 12V DC

BALER CONTROL CONSOLE

Type micro processor
 Controls 13 switches
 Monitoring LCD Screen
 Bale tying and ejecting modes.. automatic or manual
 Electrical requirement 12V DC
 Fuse in baler control console 7 amperes

8455/8465 ROUND BALERS WITH TRACTOR HYDRAULICS

Safety Precautions

Understand that your safety and the safety of other persons is measured by how you service and operate this machine. Know the positions and operations of all controls before you try to operate this machine. MAKE SURE YOU CHECK ALL CONTROLS IN A SAFE AREA BEFORE STARTING YOUR WORK.

READ THIS MANUAL COMPLETELY and make sure you understand the controls. All equipment has a limit. Make sure you understand the speed, brakes, steering, stability, and load characteristics of this machine and your power unit before you start to operate the machine.

The safety information given in this manual does not replace safety codes, insurance needs, state and local laws. Make sure your machine has the correct equipment needed by the local laws and regulations.



THIS SAFETY ALERT SYMBOL INDICATES IMPORTANT SAFETY MESSAGES IN THIS MANUAL. WHEN YOU SEE THIS SYMBOL, CAREFULLY READ THE MESSAGE THAT FOLLOWS AND BE ALERT TO THE POSSIBILITY OF PERSONAL INJURY OR DEATH.



Suggest:

If the above button click is invalid.

Please download this document

first, and then click the above link

to download the complete manual.

Thank you so much for reading

Read and understand all operating instructions and precautions before attempting to operate the machine.

Before doing any maintenance or service work on the machine, you must:

- Park machine on a solid level surface.
- Close the tailgate.
- Disengage the PTO.
- Put the transmission in PARK or apply the tractor parking brake.
- Shut off the baler control console.
- Stop the tractor engine. Remove and take the tractor ignition key with you.
- Put the tractor remote valve in the NEUTRAL position.
- Push the tailgate lockout valve in to the LOCK position.
- **Look and Listen!** Make sure all moving parts are stopped.

Always disengage the PTO, have the baler control console power switch in the OFF position, and shut off the engine before:

1. leaving tractor seat
2. lubricating
3. cleaning the machine
4. adjusting the machine.

When parking the machine, always remove and take the tractor ignition key with you.

Make sure the slotted nut and cotter pin are installed on the bottom of the hitch pin. Make sure the klik pin is installed in the top of the hitch pin when the baler is connected to the tractor.

Always install the safety chain between the baler and the tractor drawbar.

Do not service or adjust the machine until all moving parts of the baler have come to a complete stop.

When working on the machine with the tailgate open, always have the PTO disengaged, the baler control console power switch in the OFF position, and the tractor shut off. Push the tailgate lockout valve in to the LOCKED position.

Always unload the bale from the bale chamber before raising or working under the machine.

After lubricating, servicing, or adjusting the machine, make sure all tools and equipment have been removed.

Never check belts or chains while tractor is running.

All safety shields and guards must be in place before operating the machine.

Always remain seated when operating the machine.

Entanglement in a rotating drive line can cause serious injury or death. Do not operate the machine with the drive line shields removed.

Never start the tractor with the PTO engaged or the baler control console power switch in the ON position.

Always operate the baler with the baler control console power switch in the ON position.

Be aware of the size of the baler when maneuvering the baler. Make sure there is sufficient space available for safe operation.

<https://www.ebooklibonline.com>

Hello dear friend!

Thank you very much for reading.

Enter the link into your browser.

The full manual is available for immediate download.

<https://www.ebooklibonline.com>