



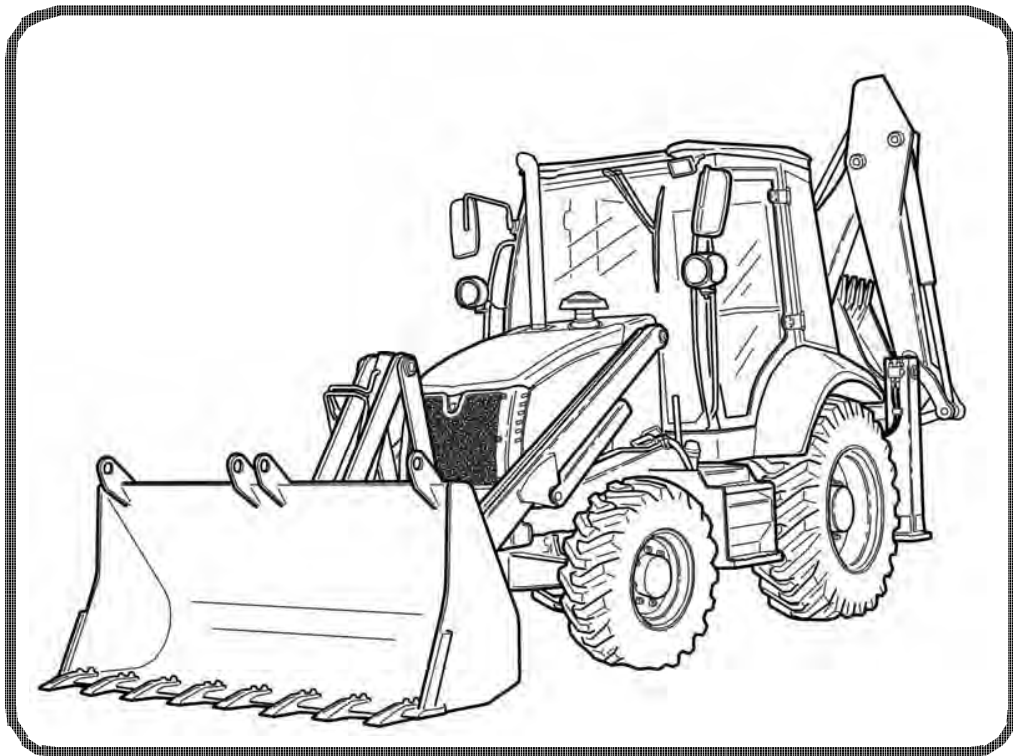
# Bobcat®

---

## Service Manual B700 Backhoe Loader

---

S/N B44Z11001 & Above



Dealer Copy -- Not for Resale

Dealer Copy -- Not for Resale



# MAINTENANCE SAFETY



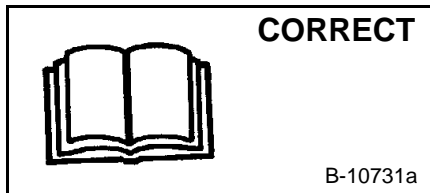
## WARNING

Instructions are necessary before operating or servicing machine. Read and understand the Operation & Maintenance Manual and signs (decals) on machine. Follow warnings and instructions in the manuals when making repairs, adjustments or servicing. Check for correct function after adjustments, repairs or service. Untrained operators and failure to follow instructions can cause injury or death.

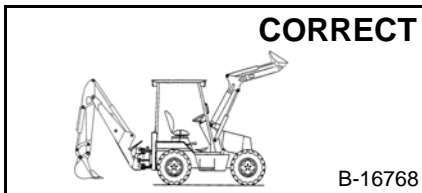
W-2003-EN-0614



**Safety Alert Symbol:** This symbol with a warning statement, means: "Warning, be alert! Your safety is involved!" Carefully read the message that follows.

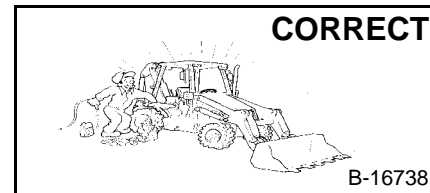


⚠ Never service the Bobcat Backhoe Loader without instructions.



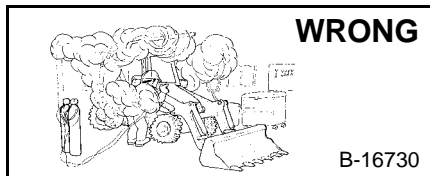
⚠ Always use an approved lift arm support device when servicing the backhoe loader with the lift arms raised. Replace the lift arm support device if damaged or missing.

⚠ Disconnecting or loosening any hydraulic tubeline, hose, fitting component, or part failure can cause lift arms or backhoe boom to drop.



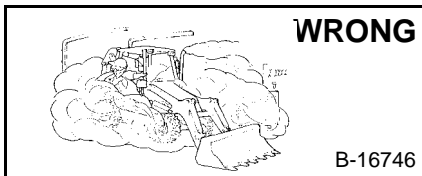
⚠ Cleaning and maintenance are required daily.

⚠ NEVER modify equipment or add attachments not approved by Bobcat.



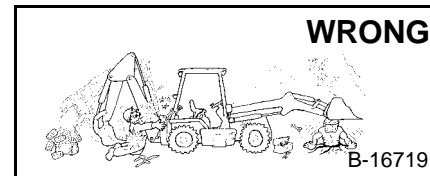
⚠ Have good ventilation when welding or grinding painted parts.

⚠ Wear dust mask when grinding painted parts. Toxic dust and gas can be produced.



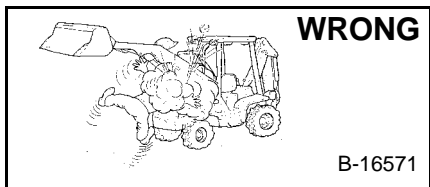
⚠ Vent exhaust to outside when engine must be run for service.

⚠ Exhaust system must be tightly sealed. Exhaust Fumes can kill without warning.



⚠ Never work on backhoe loader with lift arms raised unless supported by an approved lift arm support device.

⚠ Never perform any maintenance unless the backhoe is locked in transport position or the backhoe is lowered to the ground.

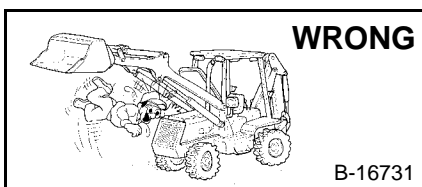


⚠ Stop, cool and clean engine of flammable materials before checking fluids.

⚠ Never service or adjust machine with the engine running unless instructed to do so in the manual.

⚠ Avoid contact with leaking hydraulic fluid or diesel fuel under pressure. It can penetrate the skin or eyes.

⚠ Never fill fuel tank with engine running, while smoking or when near open flame.



⚠ Keep body, jewelry and clothing away from moving parts, electrical contact, hot parts and exhaust.

⚠ Wear eye protection to guard from battery acid, compressed springs, fluids under pressure and flying debris when engines are running or tools are used.

⚠ Use eye protection approved for type of welding.

⚠ Keep engine cover closed except for service. Close and latch engine cover before operating the backhoe loader.



⚠ Lead-acid batteries produce flammable and explosive gases.

⚠ Keep arcs, sparks, flames and lighted tobacco away from batteries.

⚠ Batteries contain acid which burns eyes or skin on contact. Wear protective clothing. If acid contacts body, flush well with water. For eye contact flush well and get immediate medical attention.

Dealer Copy -- Not for Resale

Maintenance procedures which are given in the Operation & Maintenance Manual can be performed by the owner/operator without any specific technical training. Maintenance procedures which are **not** in the Operation & Maintenance Manual must be performed **ONLY BY QUALIFIED BOBCAT SERVICE PERSONNEL**. Always use genuine Bobcat replacement parts.

MSW46-EN-0116

## CONTENTS

GENERAL INFORMATION .....	10-01
LUBRICATION AND MAINTENANCE .....	20-01
HYDRAULIC SYSTEM .....	30-01
ELECTRICAL SYSTEM .....	40-01
AXLES .....	50-01
TRANSMISSION .....	60-01
ENGINE SERVICE .....	70-01
ALPHABETICAL INDEX .....	.INDEX-01

**<https://www.ebooklibonline.com>**

Hello dear friend!

Thank you very much for reading.

Enter the link into your browser.

The full manual is available for immediate download.

**<https://www.ebooklibonline.com>**

## GENERAL INFORMATION

MACHINE INFORMATION .....	10-10-1
TECHNICAL PROPERTIES .....	10-20-1
Engine .....	10-20-1
Electrical System .....	10-20-1
Hydraulic System .....	10-20-1
Transmission .....	10-20-1
Axle / Brakes .....	10-20-2
Tyres .....	10-20-2
Loader .....	10-20-2
Backhoe .....	10-20-2
Cab .....	10-20-2
Steering .....	10-20-2
Capacities .....	10-20-3
Weights .....	10-20-3
MAIN COMPONENTS .....	10-30-1
POSITION OF THE MACHINE .....	10-40-1
Loader Attachment Position .....	10-40-1
Backhoe Attachment Position .....	10-40-1
SAFETY INSTRUCTION .....	10-50-1
General Safety Information .....	10-50-2
Crushing And Burning Prevention .....	10-50-3
Fire And Explosion Prevention .....	10-50-3
Hydraulic Lines And Hoses .....	10-50-4
STORAGE .....	10-60-1
Preparing The Machine For Storage .....	10-60-1
Preparing The Machine For Work After A Long Period Of Storage .....	10-60-1

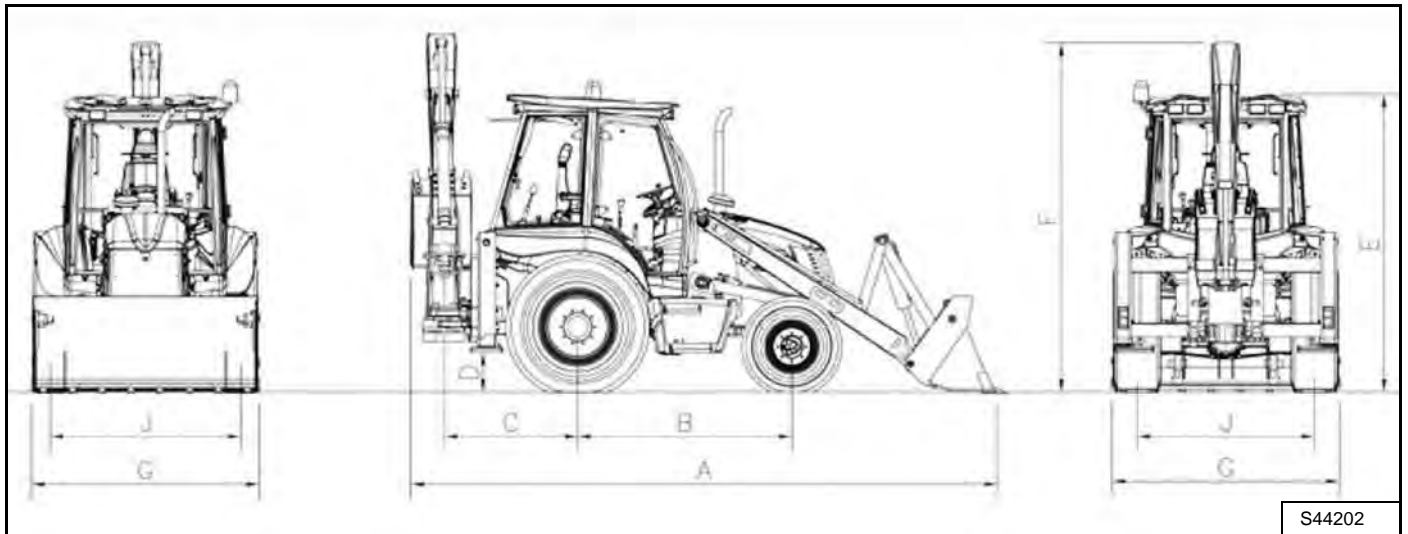
Dealer Copy -- Not for Resale

## MACHINE INFORMATION

These are backhoe loaders that are designed with operating weight 6.6 tons, rigid frame, bucket capacity of 0.2 m<sup>3</sup> and shovel capacity of 1.0 m<sup>3</sup>. This machine is designed to dig and load in closed and open terrain.



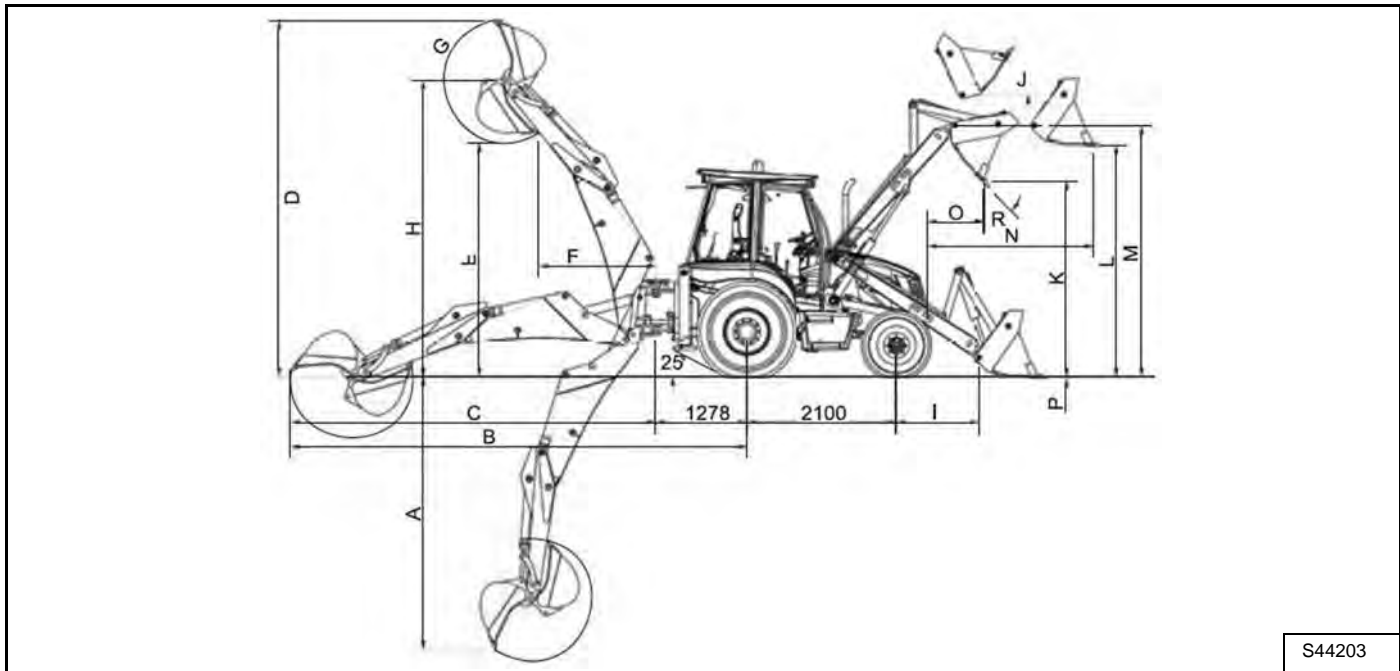
**WARNING:** Because of exhaust gas, use the machine only in well ventilated areas.



A	Overall Machine Length In Travel Position	5710 mm (225.16 in)	F	Machine Height In Travel Position	3553 mm (139.88 in)
B	Wheelbase	2100 mm (82.68 in)	G	Machine Width	2209 mm (86.97 in)
C	Backhoe Swing Centre Distance	1278 mm (50.31 in)	H	Overall Width With Bucket	2230 mm (87.80 in)
D	Minimum Machine Height	400 mm (15.75 in)	J	Rear Wheel Track	1740 mm (68.50 in)
E	Cab Height	2830 mm (111.42 in)	K	Front Wheel Track	1870 mm (73.62 in)

Dealer Copy -- Not for Resale

## MACHINE INFORMATION (CONT'D)



		Retracted	Extended			
A	Maximum Dig Depth	4005 mm (157.68 in)	4805 mm (189.617 in)	I	Distance Between Hinge Pin And Front Axle Centre	1163 mm (45.79 in)
B	Max Reach From Rear Axle Centre	6440 mm (253.54 in)	7173 mm (282.40 in)	J	Max Rollback Angle, Fully Raised	59°
C	Max Reach From Swing Centre	5162 mm (203.23 in)	5895 mm (232.09 in)	K	Dump Height	2740 mm (107.87 in)
D	Maximum Digging Height	5015 mm (197.44 in)	5515 mm (217.13 in)	L	Loadover Height	3230 mm (127.17 in)
E	Maximum Dumping Height	3275 mm (128.94 in)	3810 mm (150.00 in)	M	Height To Hinge Pin	3500 mm (137.80 in)
F	Loading Reach	1750 mm (68.90 in)	2372 mm (93.89 in)	N	Max Reach At Full Height	1200 mm (47.24 in)
G	Bucket Rotation Angle	200°	200°	O	Dumping Reach	790 mm (31.10 in)
H	Max Bucket Hinge Pin Height	4150 mm (163.39 in)	4678 mm (184.17 in)	P	Digging Depth	100 mm (3.94 in)
				R	Dump Angle	45°

Dealer Copy -- Not for Resale

## TECHNICAL PROPERTIES

### Engine

Make	PERKINS 1104C-44T Stage II / Tier II
Engine Type	4 Stroke diesel, Turbocharged
Engine Power	74.5 kW/ 100 hp
Rated Speed	2200 rpm
Displacement	4.4 L (268.5 ci)
Bore And Stroke	105 x 127 mm (4.13 x 5.00 in)
Number Of Cylinder	4
Maximum Torque @ 1350 rpm	408 N•m (300.9 ft-lb)
Cooling	Water cooled

### Electrical System

Battery	12 volt / 75A
Starter	3,2 kW (4.3 hp)

### Hydraulic System

Type	Open Center
Hydraulic Pump	Tandem Gear Pump
Maximum Flow	79 + 57 Lpm (20.87 + 15.06 gpm)
Maximum Pressure	22000 kPa (220 bar) (3191 psi)
Hydraulic Oil Filter	Full flow filter in return line with integrated fine filter area
Hydraulic Oil Cooler	Hydraulic and transmission oil cooler
Hydraulic Controls	
Backhoe Control	Mechanical levers
Loader Control	Mechanical lever

### Transmission

Make	Carraro	
Drive	2 Wheel Drive (4 Wheel Drive Optional)	
Type	Synchroshuttle	
Transmission disconnect	With brake system	
Travel Speeds	Forward	Reverse
1st	5,8 km/h (3.6 mph)	5,8 km/h (3.6 mph)
2nd	9,3 km/h (5.8 mph)	9,3 km/h (5.8 mph)
3rd	21,4 km/h (13.3 mph)	21,4 km/h (13.3 mph)
4th	40 km/h (24.9 mph)	40 km/h (24.9 mph)

Dealer Copy -- Not for Resale

## TECHNICAL PROPERTIES (CONT'D)

### Axle / Brakes

Make	Carraro
Front Axle Oscillation	16 degree
Steering angle	52 degrees
Rear Axle	Electro hydraulic operated differential lock, outboard planetary design, self-adjusting high torque internal wet service brake
Service Type	Hydraulic wet multi-disc, dual pedal braking
Parking Type	Mechanical control on rear axle

### Tyres

Front	9.0 - 16 (with 2 wheel drive) / 12,5 - 18 (with 4 wheel drive option)
Rear	16,9 - 28

### Loader

Shovel capacity	1 m <sup>3</sup> (1.3 y <sup>3</sup> )
Breakout force - lift	47,0 kN (10566 lbf)
Breakout force bucket maximum	44,0 kN (9892 lbf)
Bucket width	2230 mm (87.80 in)
Lift height to hinge pin	3500 mm (137.80 in)
ROC (ISO 14397-1) Bucket Application	2747,5 kg (8057 lb)

### Backhoe

Maximum bucket tear - out retract	44,0 kN (9892 lbf)
Arm break out	30,0 kN (6744 lbf)
Bucket width	600 mm (23.62 in)
Bucket capacity	0,2 m <sup>3</sup> (0.26 y <sup>3</sup> )

### Cab

Cab	ROPS(ISO 3741) and FOPS (ISO 3449 Level II) type tinted safety glass giving total visibility, full opening rear-side windows, front and rear windshield wipers, fully adjustable front/rear and up/down seat, Fresh air heater/blower, full heat control
-----	--

### Steering

Steering type	2 wheel steer
Power steering	Hydrostatic
Turning circle - outer front tyre clearance	7900 mm (25.9 ft)
Turning circle - outer bucket clearance	11,400 mm (37.4 ft)

## TECHNICAL PROPERTIES (CONT'D)

### Capacities

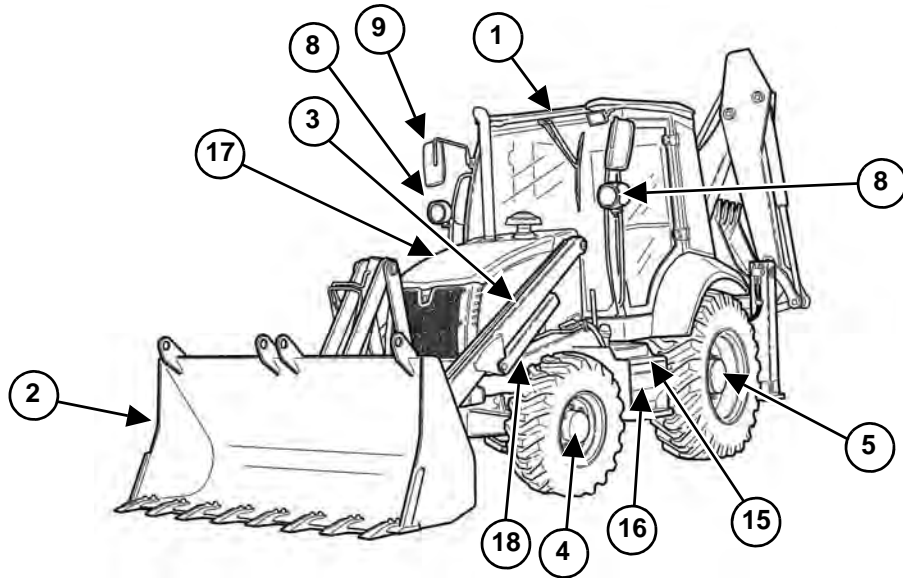
	MAXIMUM	SERVICE
Engine oil (with filters)	8.4 l (8.9 qt)	8.0 l (8.5 qt)
Cooling system	25 l (6.6 U.S. gal)	25 l (6.6 U.S. gal)
Fuel tank	140 l (37.0 U.S. gal)	140 l (37.0 U.S. gal)
Hydraulic tank	75 l (19.8 U.S. gal)	85 l (22.5 U.S. gal)
Hydraulic system	125 l (33.0 U.S. gal)	125 l (33.0 U.S. gal)
Transmission	18 l (4.8 U.S. gal)	12 - 14 l (3.4 - 3.7 U.S. gal)
Axle oil		
Front	8,3 l (2.2 U.S. gal)	5,0 l (1.3 U.S. gal)
Rear	15.5 l (4.1 U.S. gal)	8.0 l (2.1 U.S. gal)
Brake oil	0,4 l (0.42 qt)	0,4 l (0.42 qt)

### Weights

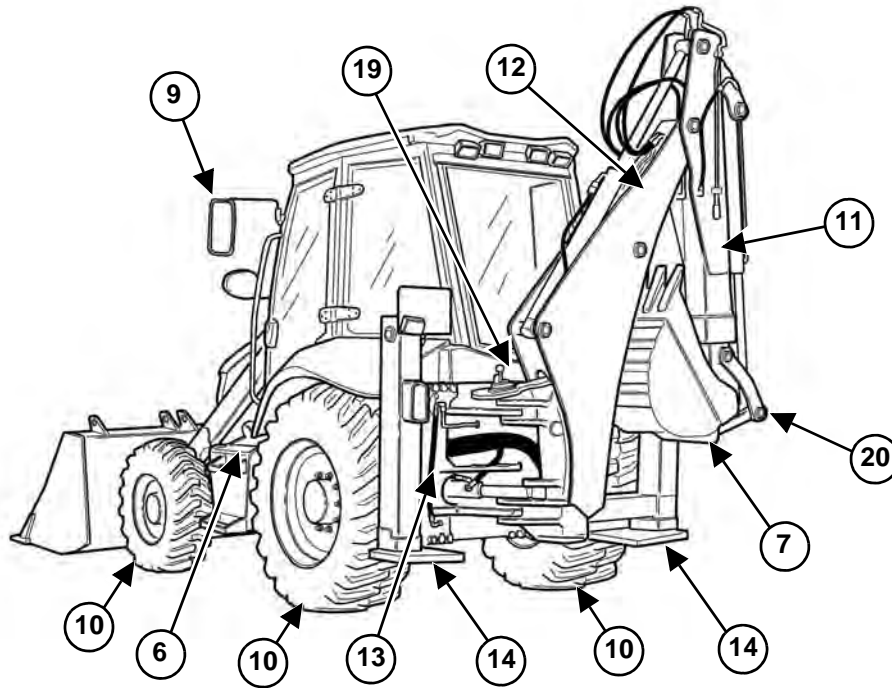
Operating Weight	6600 kg (14550 lb)
------------------	--------------------

Dealer Copy -- Not for Resale

## MAIN COMPONENTS



NA9890



NA9903

1	OPERATOR'S COMPARTMENT (WITH ROPS / FOPS) [A]	11	BACKHOE ARM
2	LOADER BUCKET	12	BACKHOE BOOM
3	LOADER LIFT ARM	13	BACKHOE ATTACHMENT SIDESHIFT CARRIAGE
4	FRONT AXLE	14	STABILISERS
5	REAR AXLE	15	FUEL TANK
6	HYDRAULIC OIL TANK	16	BATTERY BOX
7	BACKHOE BUCKET [B]	17	ENGINE BONNET
8	WORK LIGHTS	18	APPROVED LIFT ARM SUPPORT DEVICE
9	MIRRORS	19	BOOM LOCKOUT
10	TYRES	20	BUCKET LINK

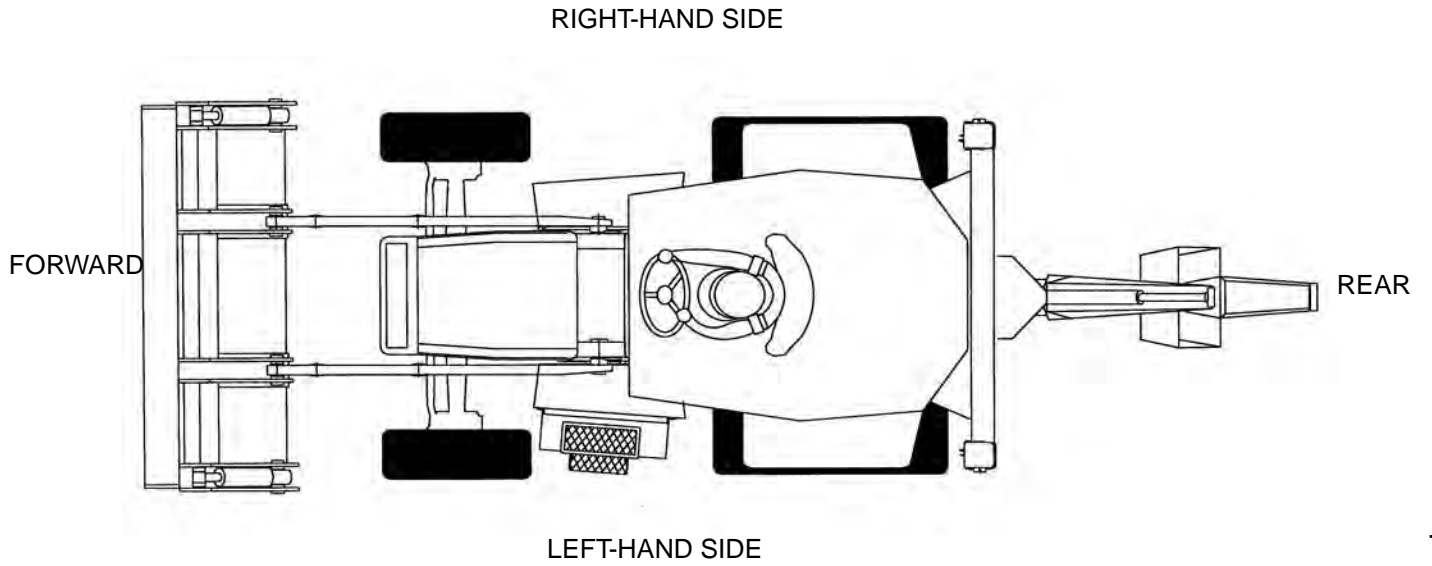
[A] - Roll Over Protective Structure (ROPS) per ISO 3471 and Falling Over Protective Structure (FOPS) per ISO 3449, Level II.

[B] - Several different buckets and other attachments are available for the Bobcat backhoe loader.

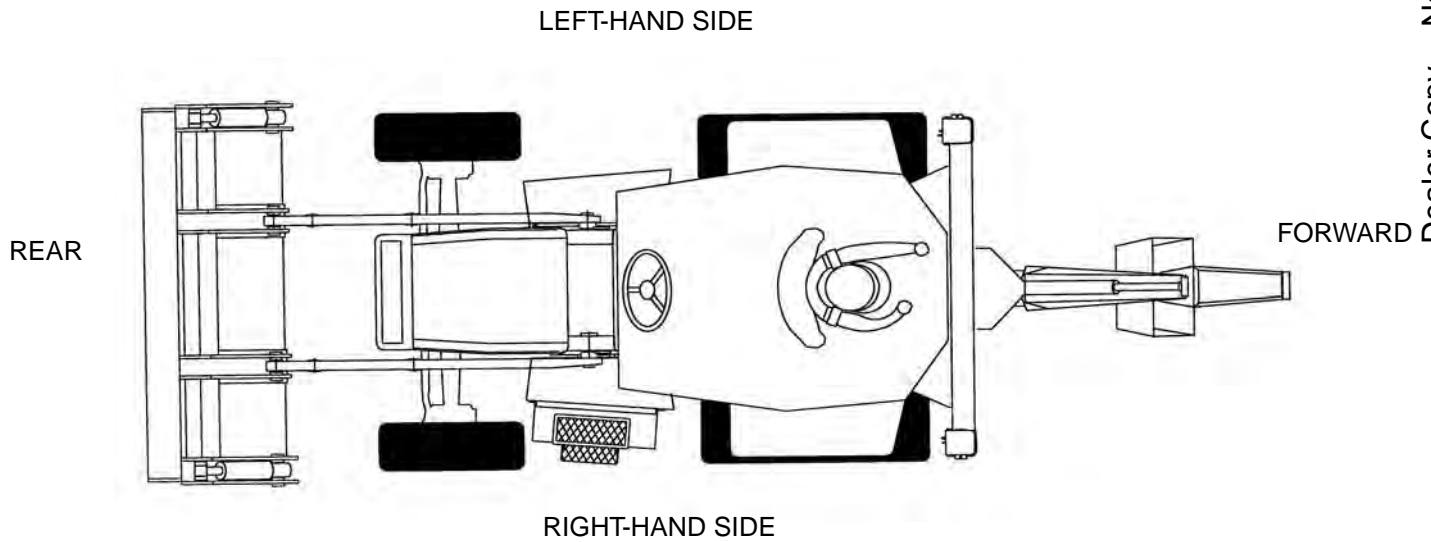
## POSITION OF THE MACHINE

The terms right, left, front and rear are used referring to the operator seated on the driver seat for the loader and backhoe attachment position.

### Loader Attachment Position



### Backhoe Attachment Position



Dealer Copy -- Not for Resale

## SAFETY INSTRUCTION

In this manual safety signs are classified according to the relative seriousness of the hazard situation by the use of the signal word. Two signal words are used: DANGER and WARNING. The signal word alerts you to the existence and relative seriousness of a hazard and it is essential that you understand these signal words fully.



**DANGER:** The signal word DANGER on the machine and in the manuals indicates a hazardous situation which, if not avoided, will result in death or serious injury.



**WARNING:** The signal word WARNING on the machine and in the manuals indicates a potentially hazardous situation which, if not avoided, could result in death or serious injury.

In addition to these instructions you must follow the safety regulations applicable to your work environment and job site and any federal, state and local safety requirements.

## SAFETY INSTRUCTION (CONT'D)

### General Safety Information

- Study the Operation & Maintenance Manual before operating or working on the backhoe loader, make sure that you have additional information for special attachments of your machine, read it and understand it!
- Allow only authorized personnel informed about the safety rules to operate, service or repair the backhoe loader, be sure to observe any minimum applicable age requirement.
- Allow only properly trained personnel to operate or work on the backhoe loader, make sure to clearly specify the person who is responsible for set up, maintenance and repairs.
- Make sure the operator knows his responsibility regarding the observance of traffic regulations and permit him to refuse any unsafe instructions given by a third person.
- Any person still in training should only operate or work on the machine under the supervision and guidance of an experienced person.
- Check and observe any person working or operating the backhoe loader periodically and check regularly, if they observe safety instructions and guidelines given in the Operation & Maintenance Manual.
- Wear proper work clothing when operating or working on the backhoe loader. Ring, watches, bracelets and loose clothings such as ties, scarves, unbuttoned or unzipped shirts and jackets are dangerous and could cause injury! Wear proper safety equipment, such as safety glasses, safety shoes, hard hats, work gloves, reflector vests and ear protection.
- Consult your employer or supervisor for specific safety equipment requirements and safety regulations on the job site.
- Do not carry tools, replacements parts or other supplies while climbing on or off the backhoe loader. Never use the steering column, control levers or joysticks as handholds.
- Never jump off the backhoe loader, climb on and off the backhoe loader using only the steps, rails and handles provided.
- When climbing on or off the backhoe loader, use both hands for support and face the machine.
- If needed, use the rear window or right door as an escape hatch.
- If no other guidelines are given, perform maintenance and repairs utilising the following precautions:
  1. Park backhoe loader on firm and level ground. Rest the attachments on the ground.
  2. Place all control in NEUTRAL position and engage park brake.
  3. Turn the engine off and remove the ignition key.
- Before working on the hydraulic circuit, move all levers and pedals with the ignition key in contact position to release the hydraulic accumulator pressure and the remaining pressures in the different main circuits. In addition, relieve the pressure in the hydraulic tank as described in the Operation & Maintenance Manual.
- Make sure there is no leak in the hydraulic system and check the machine daily.
- Check the area where you will work before starting to work. Be certain that all safety systems operate properly.
- Secure all loose parts on the backhoe loader.
- Never operate the backhoe loader without a complete walk around inspection. Check if all warning decals are on the machine and if they are legible.
- Observe all danger and safety guidelines.
- For certain applications, the backhoe loader must be equipped with specific safety equipment. Use the backhoe loader only, if they are installed and functioning properly.
- Never perform any changes, additions or modifications on the machine, which could influence the safety, without obtaining written first permission from the manufacturer. This also applies to the installation and adjustment of safety devices and safety valves as well as to any welding on load carrying parts.
- Do not install any equipment or attachments made by other manufacturers or any which are not specifically authorized by BOBCAT for installation without first obtaining the written permission from BOBCAT. BOBCAT will issue any required technical documentation for approved installations.
- Should the electrical circuit be modified or additional components be installed, so the modification must be performed according to the national standards and safety regulations. The installation must be certificated by an approved organization and a copy of the certification has to be sent to the BOBCAT company.

## SAFETY INSTRUCTION (CONT'D)

### Crushing And Burning Prevention

- Never work underneath the backhoe loader unless it is safely resting on the ground and / or is properly blocked and supported.
- Never use damaged or insufficient wire ropes, slings or chains. Always wear gloves when handling wire ropes.
- Never reach into bores during attachment installation or removal. Never align bores with fingers or hands. Use proper alignment tools when installing, changing or servicing attachments.
- Keep objects away from the radiator fan. Rotating fans will swirl and throw out objects, which can become very dangerous and cause severe injury to yourself and others.
- Avoid contact with any components containing coolant. At or near operating temperature, the engine coolant is hot and under pressure and could cause severe burns.
- Check the coolant level only after the radiator cap is cool enough to touch. Remove the radiator cap slowly to relieve pressure.
- Do not allow your skin to come in contact with hot oil or components containing hot oil. At or near operating temperature, engine and hydraulic oil is hot and can be under pressure.
- Always wear safety glasses and protective gloves when handling batteries. Keep sparks or open flames away!
- Never permit anyone to hand guide the bucket or grapple into position.
- When working in the engine area, make sure loader safety strut is installed.

### Fire And Explosion Prevention

- Always turn off the machine while refuelling the backhoe loader.
- Never smoke or allow an open flame in refuelling areas or where batteries are being charged, or where batteries or flammable materials are stored.
- Battery electrolyte can cause severe injury. If electrolyte touches your skin, wash the skin. If drunk by mistake, drink water or milk.

- Battery must be fully charged to prevent frozen electrolyte.
- Always start the engine as described in the Operation & Maintenance Manual.
- Clean the machine regularly and remove all debris which may cause a fire.
- Don't use flammable cleanser.
- Observe the following recommendations due to be protected from an explosion
  1. Disconnect the negative (-) cable first and reconnect it last.
  2. Never touch battery terminal with a metal object.
- Check the electrical system regularly and frequently. All defects, such as loose connections, burnt out fuses and bulbs, burnt or damaged cables must be repaired immediately by an electrician or specially trained person.
- Before work in an area including flammable gas, thoroughly ventilate this area.
- Never store flammable fluids on the machine except in storage tanks intended for the backhoe loader's operation.
- Inspect all component, lines, tubes and hoses for oil and fuel leaks and / or damage. Replace or repair any damaged components immediately. Any oil, which escapes from leaks, can easily cause a fire.
- Be certain that all clamps, guards and heat shields are installed. These components prevent vibration, rubbing, chafing and heat build-up. Install tie wraps to fasten hoses and wires, as required.
- Cold start ether is extremely flammable. Use ether only in ventilated areas and as directed. Never use it near heat sources or open flames. Do not permit anybody to smoke.
- Know the location of the backhoe loader's fire extinguisher and be familiar with its operation. Make sure you know your local fire regulations and fire reporting procedures.

## SAFETY INSTRUCTION (CONT'D)

### Hydraulic Lines And Hoses

- Hydraulic lines and hoses may never be repaired!
- All hoses, lines and fittings must be checked daily, but at least every 2 weeks for leaks and any externally visible damage! Any damaged sections must be replaced immediately! Escaping oil can cause injuries and fires!
- Even if hoses and lines are stored and used properly, they undergo a natural aging process. For that reason, their service life is limited. Improper storage, mechanical damage and improper use are the most frequent causes of hose failures.

The service life of a hose may not exceed six years, including a storage period of not more than two years (always check the manufacturer's date on the hoses).

Using hoses and lines close to the limit of ranges of permitted use can shorten the service life (for example at high temperatures, frequent working cycles, extremely high impulse frequencies, multi shift or around the clock operations).

- Hoses and lines must be replaced if any of the following points are found during an inspection:
  1. Damage on the external layer into the inner layer (such as chaffing, cuts and rips).
  2. Brittleness of the outer layer (crack formation of the hose material).
  3. Changes in shape, which differ from the natural shape of the hose or line, when under pressure or when not under pressure, or in bends or curves, such as separation of layers, blister or bubble formation.
  4. Leaks.
  5. Non observance of installation requirements.
  6. Damage or deformation of hose fittings, which might reduce the strength of the fitting or the connection between hose and fitting.
  7. Any movement of hose away from the fitting.
  8. Corrosion on fittings, which might reduce the function or the strength of the fitting.
  9. Storage or service life has been exceeded.
  10. When replacing hoses or lines, always use original replacement parts.
- Route or install the hoses and lines properly. Do not mix up the connections!

- Always take care to avoid torsional strain when installing a new hose. On high pressure hydraulic hoses, the mounting screws must be first mounted on both hose ends (full flange or half clamp) and tightened only thereafter.

On high pressure hoses having one curved end, always tighten first the screws on the curved hose end and only then the screws on the straight hose end.

Install and tighten the hose clips that may be mounted on the hose middle only when the both hose ends are already tightened.

- Always install hoses so to avoid any friction with other hoses and parts.

We recommend keeping a distance between hose and other parts of at least one half of the hose outer diameter. Keep a minimum gap of 1.2 cm (1/2 in) in any case.

After mounting a hose connecting two parts that are movable relative to each other, check during the return to service that the hose is not rubbing full movement.

## STORAGE

### Preparing The Machine For Storage

If the machine is not going to be used for a long period, it is useful to store the machine under a cover and take the following precautions:

- Clean the machine completely and paint the damaged parts of the machine.
- Grease all greasing points
- Drain the fuel tank and add approximately 10 l of special washing fuel. Run the engine for about 10 minutes until the residual normal fuel is eliminated. Fill the fuel tank with diesel fuel.
- Check the air filter, clean or replace if necessary.
- Drain the engine oil and replace the filter.
- Drain the cooling system and do not close the drain plugs. Put a label onto the control panel showing that “the cooling system is empty”.
- Check the electrolyte level. Make sure that the battery is charged. Remove the battery and place it in dry place at room temperature.
- Place blocks under the axles to prevent tyre deformation.
- Lubricate shafts.
- Cover the exhaust with a cloth.
- Engage the parking brake

### Preparing The Machine For Work After A Long Period Of Storage

- Fill the cooling system with engine coolant.
- Fill the engine with oil and check the oil level.
- Replace the fuel filter, fill the fuel tank and bleed the fuel system.
- Replace the battery and make sure that it is charged.
- Check the hydraulic oil level.
- Check the front drive axle and reduction gears oil level.
- Check the rear axle and reduction gears oil level.
- Check the brake oil level.
- Use a specie solvent to clean the hydraulic cylinder rods.
- Check the tyre pressures and tightness of wheel nuts.
- Check that the indicator and warning lights on the control panels work properly.
- Start the engine after removing the cloth on the exhaust. Run to the engine 20 minutes.

## LUBRICATION AND MAINTENANCE

LIFTING AND BLOCKING THE BACKHOE LOADER .....	20-10-1
Procedure .....	20-10-1
APPROVED LIFT ARM SUPPORT DEVICE .....	20-20-1
Description .....	20-20-1
TOWING THE BACKHOE LOADER .....	20-30-1
Procedure .....	20-30-1
AXLE TOE-IN ADJUSTMENT .....	20-40-1
Procedure .....	20-40-1
LUBRICATION .....	20-50-1
General Safety Information .....	20-50-1
Lubricant And Operating Materials Specifications .....	20-50-2
Diesel Fuel .....	20-50-3
Engine Coolant .....	20-50-4
Hydraulic Fluid .....	20-50-6
Brake Oil .....	20-50-8
Transmission Fluid .....	20-50-8
Front Axle Oil .....	20-50-8
Rear Axle Oil .....	20-50-8
Lubrication Chart .....	20-50-9
Service Schedule .....	20-50-10
Diesel Engine .....	20-50-13
Checking The Engine Oil level .....	20-50-13
Cooling System .....	20-50-15
Checking The Coolant Level .....	20-50-15
Changing The Coolant .....	20-50-16
Draining Coolant .....	20-50-16
Clean The Radiator And Adding Coolant .....	20-50-17
Hydraulic System .....	20-50-18
Check Hydraulic Oil Level .....	20-50-18
To Drain Oil .....	20-50-18
To Replace The Return Filter .....	20-50-19
To Clean The Suction Strainer .....	20-50-19
Replacing The Internal Hydraulic Filter .....	20-50-20
Adding Hydraulic Oil .....	20-50-21
Fuel System .....	20-50-22
Fuel Specifications .....	20-50-22
Biodiesel Blend Fuel .....	20-50-22
To Drain The Contaminant From The Fuel Filter .....	20-50-23
To Drain The Contaminant From The Fuel Tank .....	20-50-23
To Add Fuel .....	20-50-24
Transmission System .....	20-50-25
Checking Transmission Oil Level .....	20-50-25
Draining Transmission Oil .....	20-50-25
To Replace The Filter Elements .....	20-50-26

Adding Transmission Oil .....	20-50-26
Front Axle .....	20-50-26
Draining Axle Oil .....	20-50-27
Adding Oil .....	20-50-27
Reduction Gears .....	20-50-27
To Check Reduction Gear Oil Level .....	20-50-27
Draining Reduction Gear Oil .....	20-50-28
Adding Reduction Gear Oil .....	20-50-28
Rear Axle .....	20-50-28
Checking Rear Axle Oil Level .....	20-50-28
Cleaning The Rear Axle Breather .....	20-50-29
Draining Rear Axle Oil .....	20-50-29
Adding Rear Axle Oil .....	20-50-29
Brake Fluid .....	20-50-30
Checking Brake Fluid Reservoir Level .....	20-50-30
Adding Brake Fluid .....	20-50-30
AIR CLEANER SERVICE .....	20-60-1
Engine Air Intake System .....	20-60-1
Cleaning The Primary Element .....	20-60-2
Replacing The Air Filter Elements .....	20-60-3
Cab Air Filter (If Equipped) .....	20-60-3
BACKHOE BOOM / SWING LOCK .....	20-70-1
Engaging and Disengaging .....	20-70-1
ENGINE ALTERNATOR AND FAN BELT .....	20-80-1
Replacing Fan And Alternator Belt .....	20-80-1
TYRE MAINTENANCE .....	20-90-1
Type Of Tyres .....	20-90-1
To Replace A Wheel .....	20-90-1
Wheel Nut Torque Settings .....	20-90-1
LUBRICATING THE BACKHOE LOADER .....	20-100-1
Lubrication Locations .....	20-100-1

## LIFTING AND BLOCKING THE BACKHOE LOADER

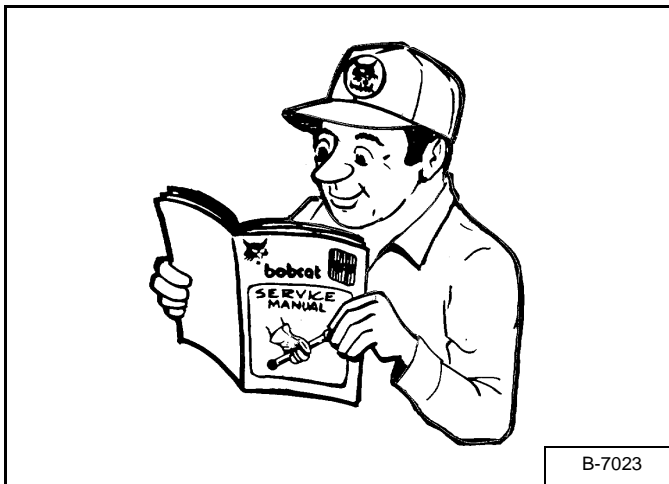
### Procedure

# ! WARNING

Instructions are necessary before operating or servicing machine. Read and understand the Operation & Maintenance Manual and signs (decals) on machine. Follow warnings and instructions in the manuals when making repairs, adjustments or servicing. Check for correct function after adjustments, repairs or service. Untrained operators and failure to follow instructions can cause injury or death.

W-2408-0801

Figure 20-10-1



Read the removal and installation, disassembly and assembly, etc., completely to become familiar with the procedure before beginning [Figure 20-10-1].

Always park the backhoe loader on a level surface.

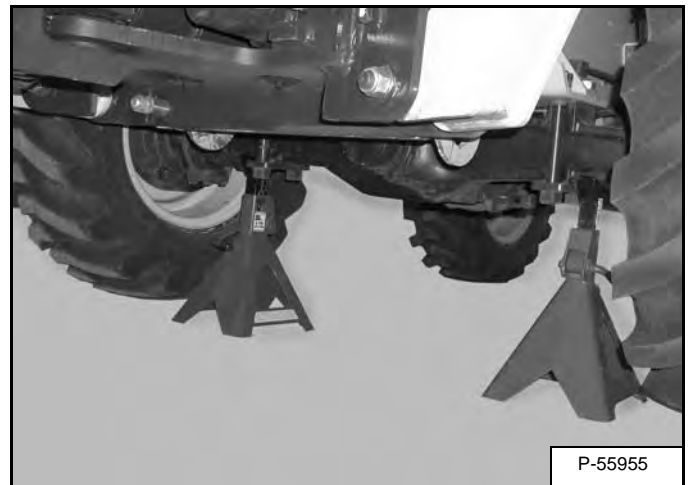
Stop the engine.

# ! WARNING

Put jackstands under the front and rear axle before running the engine for service. Failure to use jackstands can allow the machine to fall or move and cause injury or death.

W-2461-0303

Figure 20-10-2



Lift the rear of the backhoe loader and install jackstands [Figure 20-10-2].

Figure 20-10-3



**NOTE:** Loader lift arms are raised for photo clarity.

Lift the front of the backhoe loader and put jackstands under the axle [Figure 20-10-3].

**Note:** Make sure the jackstands do not touch the tires.

Dealer Copy -- Not for Resale

## APPROVED LIFT ARM SUPPORT DEVICE

### Description

The approved lift arm support device (1) is used to support the lift arms while working on a machine with the lift arms up.



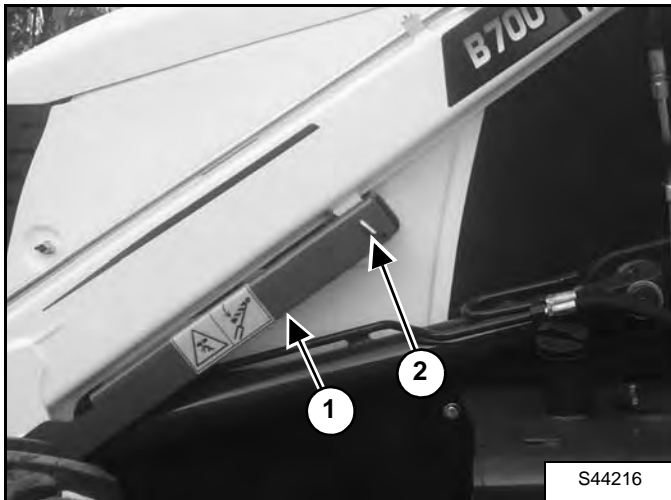
Never work on a machine with the lift arms up unless the lift arms are secured by an approved lift arm support device. Failure to use an approved lift arm support device can allow the lift arms or attachment to fall and cause injury or death.

Service lift arm support device if damaged or if parts are missing. Using a damaged lift arm support or with missing parts can cause lift arms to drop causing injury or death.

W-2572-0407

**NOTE:** For installing the approved lift arm support device can be performed with just the operator. For removing the approved lift arm support device, a second person is required.

Figure 20-20-1



### Installing The Approved Lift Arm Support Device

Park the machine on a flat level surface.

Fully lower lift arm and put the attachments flat on the ground.

Put all controls in neutral.

Engage the parking brake.

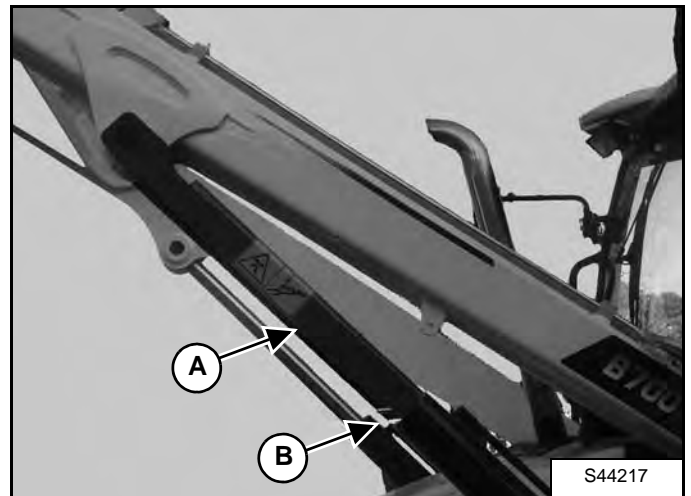
Stop the engine and exit the machine.

**NOTE:** Remove the attachment from the loader before the lift arms are raised and the approved lift arm support device is installed.

Remove the retaining pin and the pin (2) and lower the approved lift arm support device (1) from the storage location and position onto the lift cylinder.

Enter the machine, fasten seat belt and start the engine.

Figure 20-20-2



Raise the lift arms until the approved lift arm support device (A) is positioned on the lift cylinder rod.

The approved lift arm support device must be tight against the cylinder rod.

Lower the lift arms slowly until the approved lift arm support device (A) is held between the lift arms and the lift cylinder.

Stop the engine and exit the machine.

Install the retainer pin (B) to secure the approved lift arm support device.

### Placing The Approved Lift Arm Support Device In The Storage Position

A second person is required to assist in repositioning the approved lift arm support device into the storage position. Remove the retainer pin (B).

Have the operator enter the machine, fasten seat belt and start the engine.

Slightly raise the lift arms so the approved lift arm support device is loose on the cylinder rod.

Dealer Copy -- Not for Resale



**Suggest:**

**If the above button click is invalid.**

**Please download this document**

**first, and then click the above link**

**to download the complete manual.**

**Thank you so much for reading**

## **APPROVED LIFT ARM SUPPORT DEVICE (CONT'D)**

### **Description (Cont'd)**

The second person will need to raise the approved lift arm support device (A), place it into the storage position (1) and install the retainer pin (2).

**<https://www.ebooklibonline.com>**

Hello dear friend!

Thank you very much for reading.

Enter the link into your browser.

The full manual is available for immediate download.

**<https://www.ebooklibonline.com>**