



---

# OPERATOR'S MANUAL

---

## LOADER LANDSCAPER

---

**570MXT  
SERIES 3  
TIER 3**

---



READ, UNDERSTAND, AND FOLLOW ALL SAFETY PRECAUTIONS AND INSTRUCTIONS FOUND IN THIS MANUAL BEFORE OPERATING THE MACHINE.

CNH America, LLC reserves the right to make improvements in design or changes in specifications at any time without incurring any obligation to install them on units previously sold.

All data given in this publication is subject to production variations. Dimensions and weights are only approximate. Illustrations do not necessarily show products in standard condition. For exact information about any particular product, please consult your Dealer




This unit first became available 04-2008			
REVISION HISTORY			
Issue	Issue Date	Applicable Machines	Remarks
First Edition	01April 08	570MXT Series 3 Tier 3 Loader Landscaper	87657959 NA



THIS SAFETY ALERT SYMBOL INDICATES IMPORTANT SAFETY MESSAGES IN THIS MANUAL. WHEN YOU SEE THIS SYMBOL, CAREFULLY READ THE MESSAGE THAT FOLLOWS AND BE ALERT TO THE POSSIBILITY OF DEATH OR SERIOUS INJURY.

Safety Decals on this machine use the words Danger, Warning, or Caution, which are defined as follows:

- **DANGER:** Indicates an immediate hazardous situation that, if not avoided, will result in death or serious injury. The color associated with Danger is RED.
  - **WARNING:** Indicates a potentially hazardous situation that, if not avoided, could result in death or serious injury. The color associated with Warning is ORANGE.
  - **CAUTION:** Indicates a potentially hazardous situation which, if not avoided, may result in minor or moderate injury. It may also be used to alert against unsafe practices. The color associated with Caution is YELLOW.
- If Safety Decals on this machine are ISO two panel Pictorial, decals are defined as follows:

- The first panel indicates the nature of the hazard.
- The second panel indicates the appropriate avoidance of the hazard.
- Background color is YELLOW
- Prohibition symbols such as , , and  if used, are RED.

## **WARNING**

IMPROPER OPERATION OF THIS MACHINE CAN CAUSE DEATH OR SERIOUS INJURY. BEFORE USING THIS MACHINE, MAKE CERTAIN THAT EVERY OPERATOR:

- ② Is instructed in safe and proper use of the machine.
- ② Reads and understands the Manual(s) pertaining to the machine.
- ② Reads and understands ALL Safety Decals on the machine.
- ② Clears the area of other persons.
- ② Learns and practices safe use of machine controls in a safe, clear area before operating this machine on a job site.

It is your responsibility to observe pertinent laws and regulations and follow instructions on machine operation and maintenance.

### CALIFORNIA PROPOSITION 65 WARNING

Diesel engine exhaust and some of its constituents are known to the State of California to cause cancer, birth defects, and other reproductive harm.

Battery post, terminals and related accessories contain lead and lead compounds. Wash hands after handling.

### TECHNICAL MANUALS

Manuals are available from your Dealer for the operation, service, and repair of your machine.

Contact your Dealer for assistance in obtaining the manuals for your machine. Your Dealer can expedite your order for Operator's Manuals, Parts Catalogs, Service Manuals, and maintenance records.

Always give the Machine Name, Model, and P. I. N. (Product Identification Number) or S. N. (Serial Number) of your machine so your Dealer can provide the correct manuals for your machine.

# TABLE OF CONTENTS

<b>TIER 3 LOADER LANDSCAPER</b> .....	0-1
<b>CHAPTER 1</b>	
GENERAL INFORMATION	
RIGHT, LEFT, FRONT, AND REAR OF THE MACHINE .....	1-2
MACHINE COMPONENTS .....	1-5
<b>CHAPTER 2</b>	
SAFETY, AND SAFETY DECALS	
TABLE OF CONTENTS .....	2-1
GENERAL AND SPECIFIC SAFETY INFORMATION .....	2-3
UTILITY SAFETY .....	2-4
DECALS .....	2-11
<b>CHAPTER 3</b>	
INSTRUMENTS AND CONTROLS	
TABLE OF CONTENTS .....	3-1
INSTRUMENTS AND CONTROLS .....	3-3
LOADER CONTROLS .....	3-8
<b>CHAPTER 4</b>	
OPERATING INSTRUCTIONS	
TABLE OF CONTENTS .....	4-1
OPERATING INSTRUCTIONS .....	4-3
MACHINE OPERATION .....	4-6
<b>CHAPTER 5</b>	
LUBRICATION, FILTERS, AND FLUIDS	
TABLE OF CONTENTS .....	5-1
LUBRICATION, FILTERS AND FLUIDS .....	5-3
FLUIDS AND LUBRICANT CAPACITIES .....	5-6
<b>CHAPTER 6</b>	
MAINTENANCE AND ADJUSTMENTS	
TABLE OF CONTENTS .....	6-1
MAINTENANCE AND ADJUSTMENTS .....	6-3
MACHINE STORAGE .....	6-15
<b>CHAPTER 7</b>	
ELECTRICAL	
TABLE OF CONTENTS .....	7-1
ELECTRICAL SYSTEM .....	7-3
<b>CHAPTER 8</b>	
SPECIFICATIONS	
TABLE OF CONTENTS .....	8-1
SPECIFICATIONS .....	8-3
OPERATING DATA AND DIMENSIONS .....	8-5
WEIGHTS .....	8-8
TORQUE CHARTS .....	8-10
<b>CHAPTER 9</b>	
INDEX .....	9-1

**<https://www.ebooklibonline.com>**

Hello dear friend!

Thank you very much for reading.

Enter the link into your browser.

The full manual is available for immediate download.

**<https://www.ebooklibonline.com>**

## Chapter 1

### General Information



BD08C002

Figure 1

#### 570M XT - SERIES 3 - LOADER LANDSCAPER

This manual contains important information about the safe operation, adjustment and maintenance of your loader landscaper. Refer to the index at the end of this manual for locating specific items about your machine. The loader landscaper conforms to current safety regulations.

Use this manual as a guide. Your loader landscaper will remain a reliable working tool as long as it is kept in good working condition and serviced properly.

Do not operate or permit anyone to operate or service this machine until you or the other persons have read and understand the safety, operation and maintenance instructions in this manual. Use only trained operators who have demonstrated the ability to operate and service this machine correctly and safely.

This loader landscaper, with standard equipment and authorized attachments, is intended to be used for above ground material handling.

Do not use this machine for any application or purpose other than those described in this manual. Consult an authorized dealer on changes, additions or modifications that can be required for this machine to comply with various country regulations and safety requirements. Unauthorized modifications can cause serious injury or death. Anyone making such unauthorized modifications is responsible for the consequences.

This Operators Manual is to be stored in the manual compartment equipped on this machine. Make sure this manual is complete and in good condition. Contact your dealer to obtain additional manuals. Contact your dealer for any further information or assistance about your machine. Your dealer has approved service parts. Your dealer has technicians with special training that know the best methods of repair and maintenance for your loader landscaper.

This machine was designed to power and move itself. It is intended to load and move materials with a variety of buckets and forks. Attachments supplied by other manufacturers can be used on the loader landscaper where recommended and approved by Case.

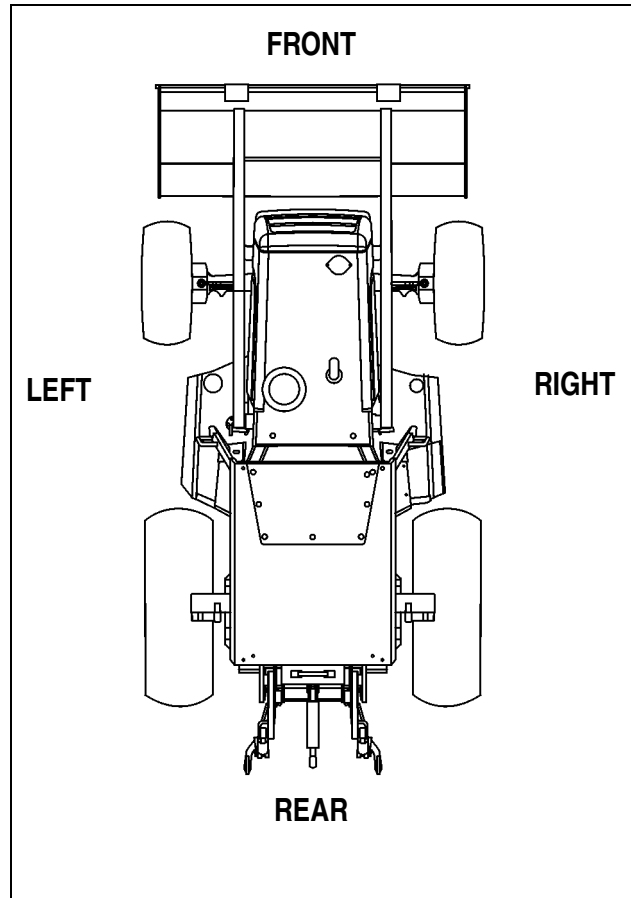


BD05H088

Figure 2

**OPERATOR'S MANUAL STORAGE**

**RIGHT, LEFT, FRONT, AND REAR OF THE MACHINE**



BC01G145

Figure 3

**BASIC MACHINE**

The terms Right-hand, Left-hand, Front, and Rear are used in this manual to indicate the sides as they are seen from the operator's seat.

## IDENTIFICATION NUMBERS

### MODEL, SERIAL NUMBER, AND YEAR OF MANUFACTURE

When ordering parts, obtaining information or assistance, always supply your dealer with the type and serial number of your machine or accessories.

Write the following information in the spaces below: The type, serial number and year of manufacture of your machine, accessories and the serial numbers of the various hydraulic and mechanical components.

Make a record of the numbers and keep the record and your Manufacturer's Statement of Origin in a safe place. If the machine is stolen, report the numbers to your local law enforcement agency.

PRODUCT IDENTIFICATION PLATE	
➤ _____	Model
➤ _____	Serial Number
➤ _____	Manufacturing Year

ENGINE	
➤ _____	Make and Model
➤ _____	Serial Number

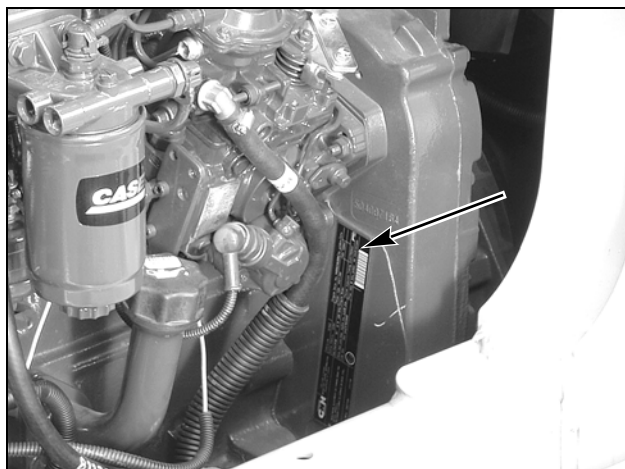
COMPONENT SERIAL NUMBERS	
➤ _____	Transmission
➤ _____	Axle
➤ _____	ROPS Cab
➤ _____	



BD08D067

Figure 4

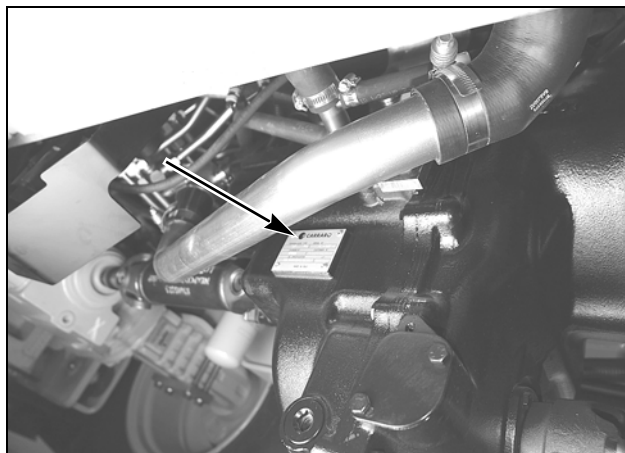
**PRODUCT IDENTIFICATION NUMBER (P.I.N.)** Located on the left side of the machine just behind the loader arm cylinder.



BD08D068

Figure 5

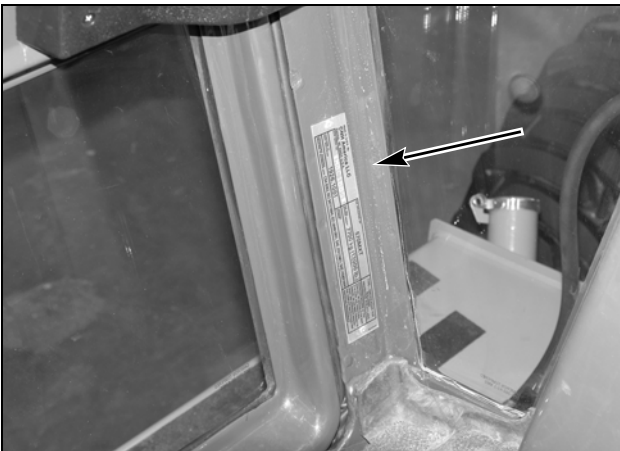
**ENGINE IDENTIFICATION PLATE** Located on the left, rear side of the engine.



BD08D070

Figure 6

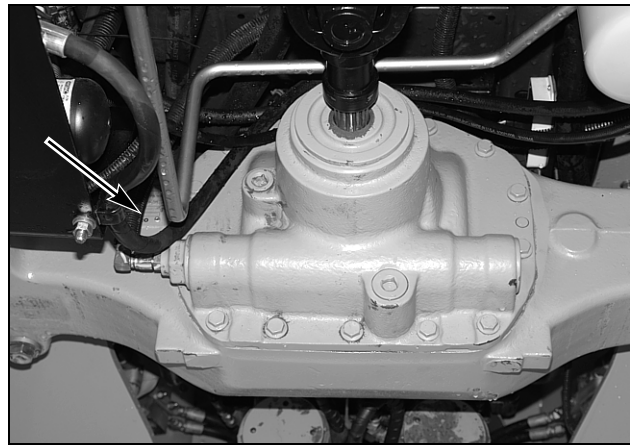
**TRANSMISSION IDENTIFICATION PLATE** Located on the right side of the transmission.



BD08D069

Figure 7

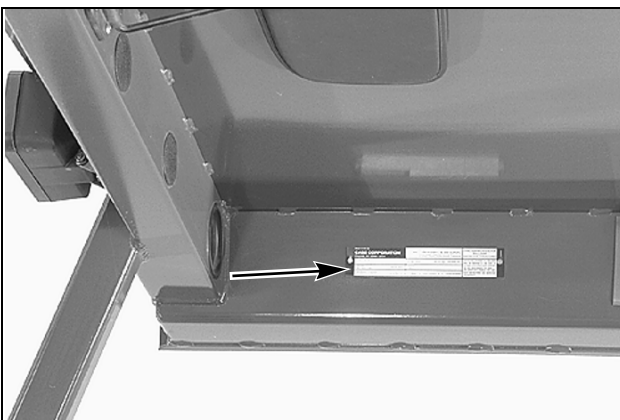
**CAB CERTIFICATION PLATE** Located on the left, inside, front cab upright.



BD08B048

Figure 10

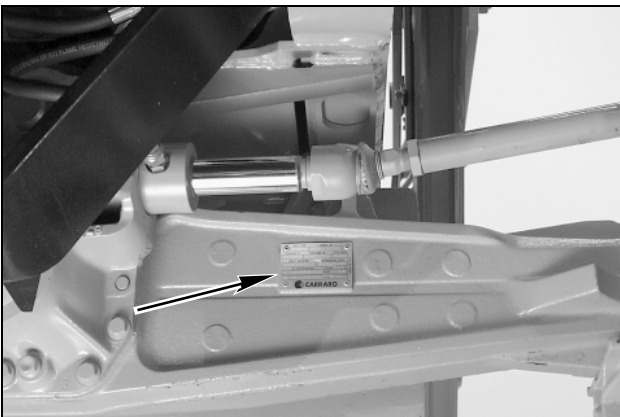
**REAR AXLE** Located on the right rear, inside of the axle.



BK97K220

Figure 8

**ROPS CERTIFICATION PLATE** Located on the upper right, inside portion of the top.

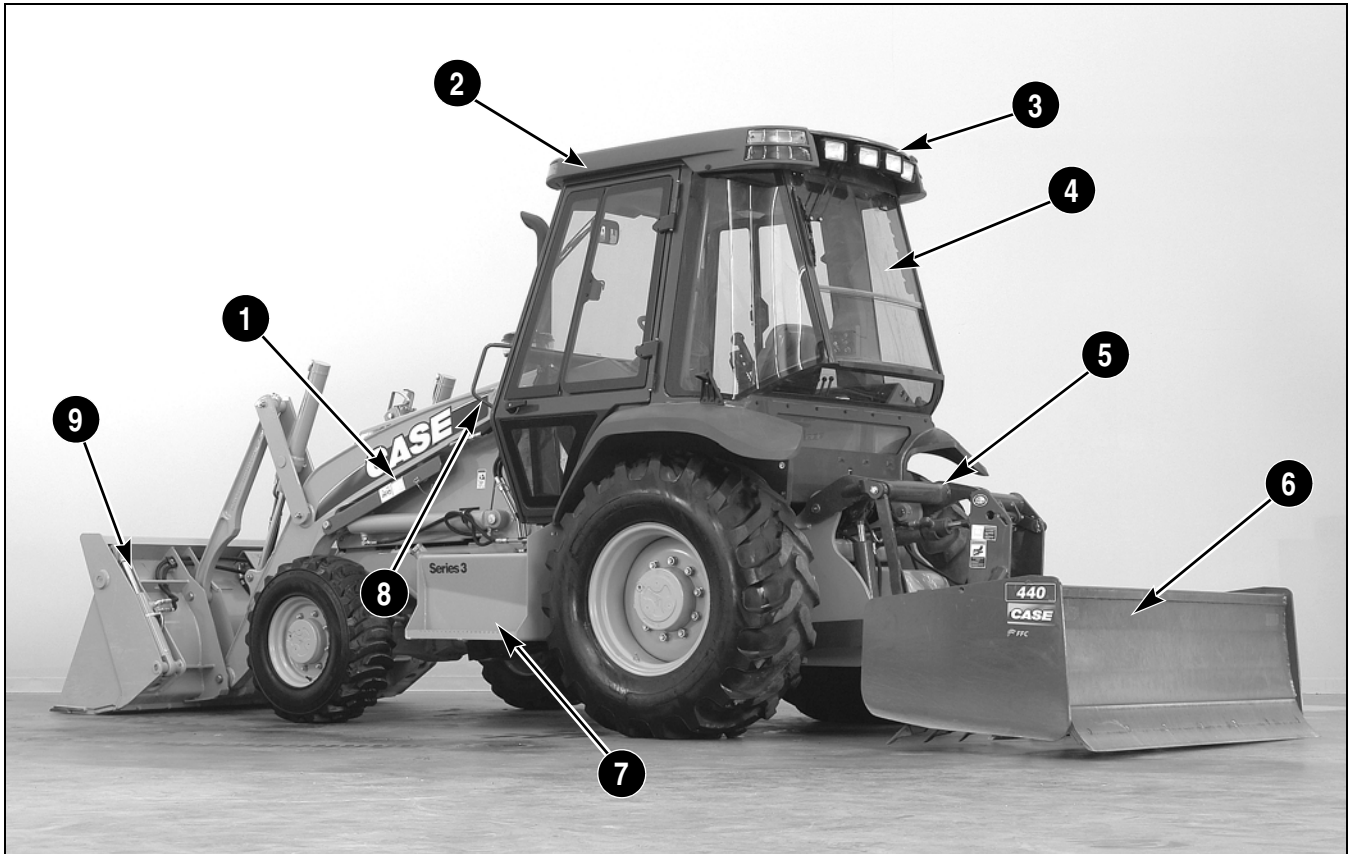


BD00F123

Figure 9

**4WD FRONT AXLE PLATE** Located on the right, backside of the axle.

**MACHINE COMPONENTS**



BD08D071

Figure 11

1. LIFT ARM SUPPORT STRUT	4. ADJUSTABLE REAR WINDOW	7. FUEL TANK AND STEPS
2. ROPS CAB	5. THREE POINT HITCH	8. HAND HOLD
3. REAR LIGHT BAR	6. BOX SCRAPER ATTACHMENT	9. 4 IN 1 OR MULTI -PURPOSE BUCKET



BD08D066

Figure 12

1. AIR INTAKE	4.FRONT TIE DOWN
2. LOADER LIFT ARMS	5.HYDRAULIC TANK - FILL AND SIGHT GAUGE
3. 4 IN 1 BUCKET	6. BATTERY BOX

Figure 13

**Chapter 2**  
**SAFETY, AND SAFETY DECALS**

**TABLE OF CONTENTS**

GENERAL AND SPECIFIC SAFETY INFORMATION ..... 2-3

UTILITY SAFETY ..... 2-4

OPERATOR PRECAUTIONS ..... 2-5

    Personnel Precautions ..... 2-5

    Operator - General ..... 2-5

    Proper Entry And Exit ..... 2-5

    Starting and Stopping Precautions ..... 2-6

    Operating Precautions ..... 2-6

    Maintenance Precautions ..... 2-8

    Fuel Handling Precautions ..... 2-8

    Burn Prevention ..... 2-9

    Hazardous Chemical Precautions ..... 2-9

    Transporting Precautions ..... 2-9

    Roll-Over Protective Structure ..... 2-9

    Fire Extinguisher ..... 2-9

    Seat Belt Precautions ..... 2-9

    Specific Precautions to this Machine ..... 2-10

    Installing The Support Strut For Loader Lift Arms ..... 2-10

DECALS ..... 2-11

## GENERAL AND SPECIFIC SAFETY INFORMATION



**WARNING:** *This safety alert symbol indicates important safety messages in this manual. When you see this symbol, carefully read the message that follows and be alert to the possibility of death or serious injury.*

Most accidents involving machine operation and maintenance can be avoided by following basic safety rules and precautions. Read and understand all the safety messages in this manual, the safety manual, and the safety decals on the machine before you operate or service the machine. See your dealer if you have any questions.

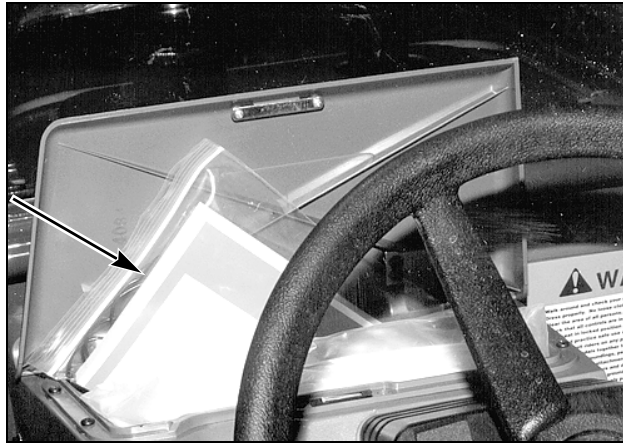


Figure 1

**OPERATOR'S MANUAL STORAGE**

READ THIS MANUAL COMPLETELY and make sure you understand the controls. All equipment has a limit. Make sure you understand the speed, brakes, steering, stability and load characteristics of this machine before you start to operate.

DO NOT remove this manual or the safety manual from the machine. See your dealer for additional manuals. Also see the manual information on the Title pages (first and second pages in front of the Table of Contents) of this manual.

The safety information given in this manual does not replace safety codes, insurance needs, or federal, state, and local laws. Make sure your machine has the correct equipment according to these rules or laws.

Additional safety messages are used in the text of the manual to show specific safety hazards.




**IMPORTANT:** *The safety messages in this chapter point out conditions which can happen during the normal operation and maintenance of your machine. These safety messages also give possible ways of dealing with these conditions.*

Safety Decals on this machine use the words, **Danger, Warning or Caution**, which are defined as follows:

- **DANGER:** Indicates an immediate hazardous situation which, if not avoided, will result in death or serious injury. The color associated with Danger is **RED**.
- **WARNING:** Indicates a potentially hazardous situation that, if not avoided, could result in death or serious injury. The color associated with Warning is **ORANGE**.
- **CAUTION:** Indicates a potentially hazardous situation which, if not avoided, may result in minor or moderate injury. It may also be used to alert against unsafe practices. The color associated with Caution is **YELLOW**.

ISO two panel pictorial symbol decals are defined as follows:

- The first panel indicates the nature of the hazard.
- The second panel indicates the appropriate avoidance of the hazard.
- Background color is **YELLOW**.

Prohibition symbols such as   and  if used, are **RED**.

**UTILITY SAFETY**

Safety precautions **MUST** be followed when working near buried and overhead utility lines.

During operation it is likely that you will be working around or near buried or overhead utility lines which may include, but are not limited to:


- Electrical Power Line
- Gas Line
- Water Line
- Communication Line - Telephone or Cable Television
- Sewer Line

**IMPORTANT:** *Before beginning any machine operation, it is your responsibility to be aware of all such utility lines buried and overhead in the area of your project and to avoid them.*

**ALWAYS** have all local utility companies mark the location of their lines.

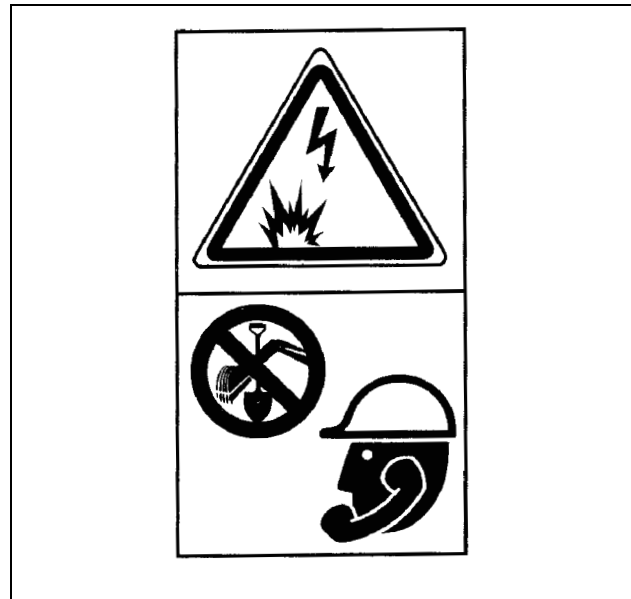
In U.S.A. and Canada, call one of many “One Call System Directory” services. If you do not know the local number, call the national number (U.S.A. and Canada only): 1-888-258-0808.

**IMPORTANT:** *Check with local authorities for laws, regulations and/or strict penalties requiring you to locate and avoid existing utilities.*



**WARNING:** *Contact with high voltage power lines, underground cables, etc., can cause serious injury or death from electrocution. Keep machine and attachments a safe distance from electrical power lines. Failure to comply could result in injury or death.*

Figure 2



RH99G001

Figure 3

**CALL ALL LOCAL UTILITY COMPANIES BEFORE YOU PERFORM ANY MACHINE OPERATION**

Know the utility color code (U.S.A. and Canada):

- Electric . . . . . Red
- Gas, Oil, or Petroleum. . . . . Yellow
- Communication, Telephone, Television. . . Orange
- Water . . . . . Blue
- Sewer . . . . . Green/Brown
- Proposed Excavation . . . . . White
- Surveying . . . . . Pink
- Reclaimed Water and Slurry. . . . . Purple

After locating any buried utility lines, carefully dig a hole by hand and/or automatic vacuum equipment to the utility line to verify the location and depth of the line.

**OPERATOR PRECAUTIONS****PERSONNEL PRECAUTIONS**

- Be prepared for emergencies. Always have a first aid kit and a working fire extinguisher with you and know how to use each.
- Avoid loose fitting clothing, loose or uncovered long hair, jewelry and loose personal articles.
- Know and use the protective equipment that is to be worn when operating this machine. Hard hats, protective glasses, protective shoes, gloves, reflector type vests, respirators and ear protection are examples of equipment that may be required.
- Certain protective equipment should be replaced and renewed upon age and wear. Old hard hats may not provide the proper protection required. Faded and soiled vests are no longer as highly visible as the original intent. See the manufacturer's recommendation.
- Do not rush. Walk, do not run.
- Know and use the hand signals required for particular jobs and know who has the responsibility for signaling.

**OPERATOR - GENERAL**

- It is the responsibility of the operator to read and understand the Operator's Manual and other information provided and use the correct operating procedure. Machines should be operated only by qualified operators.
- Do not operate this machine or perform maintenance work if you have not had appropriate training and have read and fully understand the instructions and warnings in this manual.
- Wear the seat belt to maximize the protection capability of the ROPS (Roll Over Protective Structure).
- Inspect the ROPS and seat belt mounting bolts on a daily basis to ensure their integrity.
- Do not permit riders on the machine if there is no manufacturer's designated place for a rider.
- Make sure that all protective guards, canopies, doors, etc. are in place and secure before starting and operating the machine.
- Remove all loose objects stored in the machine. Remove all objects which do not belong in or on the machine and its equipment.
- After service has been performed, make certain all tools, parts and equipment have been cleared from the machine area.
- Do not lift personnel or allow personnel to work while standing in the bucket or on other attachments. This machine is not a man-lift.

**PROPER ENTRY AND EXIT**

BD08D072

Figure 4

Enter the loader landscaper from the side by using the steps and hand holds. Always use a three point entrance and exit stance.

To exit the loader landscaper use the hand holds for support and step down carefully.

Before exiting the loader landscaper:

1. Lower the boom and or attachments to the ground. If the operator must exit the loader landscaper with a raised boom always engage the support strut for the loader lift arms.
2. Place the direction control lever in neutral.
3. Stop the engine. Pull the parking brake control lever back to set the brake.
4. Remove the seat belt.

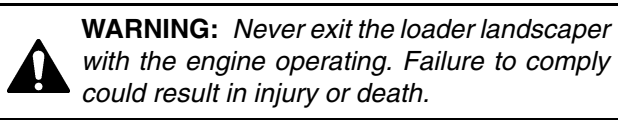


Figure 5

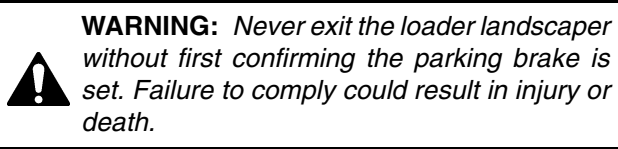


Figure 6

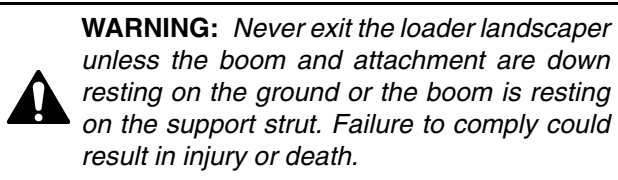


Figure 7

- Use the recommended hand holds and steps with at least three points of support when getting on and off the machine. Keep steps and platform clean.
- Do not jump off the machine.
- Do not dismount while the machine is in motion.
- Foreign material or grease on the steps and hand holds can cause an accident. Keep the steps and hand holds clean.

#### STARTING AND STOPPING PRECAUTIONS

- Walk around the machine and warn all personnel who may be servicing the machine or are in the machine path prior to starting. Do not start until all personnel are clearly away from the machine. Sound the horn, if equipped, before starting.
- Walk around the machine's tool, attachment, or furthestmost contact point to view operation danger area from the work site personnel view and angle.
- Check that the parking device is applied, place the transmission in neutral or park as specified by the manufacturer, before starting the machine.
- Adjust, secure, and latch the seat and fasten the seat belt before starting the machine.
- Start and operate the machine only from the operator's station.
- Use battery booster cables only in the recommended manner. Improper use can result in battery explosion or unexpected machine motion. Ventilate the battery area before using booster cables. Make sure that using battery booster cables will not interfere or harm electronic processing or computer devices.
- Do not operate the engine in an enclosed area without adequate ventilation.

- Park the machine on level ground whenever possible and apply the parking brake. On grades, park the machine with the wheels or track securely blocked.
- Before leaving the operator station lower the equipment to the ground and shut off the engine.
- Remove the starter key or use the disconnect switch when leaving the machine parked or unattended.

#### OPERATING PRECAUTIONS

- Check brakes, steering and other machine control devices in accordance with the manufacturer's instructions prior to starting operation. Observe all gauges or warning instruments for proper operation. Operate all controls to insure proper operation. If any malfunctions are found, remove the starter key. Place a **DO NOT OPERATE TAG** on the machine until the malfunction is corrected.
- If a failure that causes loss of control such as steering, service brakes or engine occurs, stop the machine motion as quickly as possible, remove the starter key or disconnect switch key. Place a **DO NOT OPERATE TAG** on the machine and keep it securely parked until the malfunction is corrected or the machine can be safely moved.
- Understand the machine limitations and keep the machine under control.
- Never transport a loaded bucket at full height. Operate the machine with the load as low as possible until it becomes necessary to raise the boom to discharge the load into a truck, container, etc.
- Operate and drive the machine with care and at speed compatible with conditions. Use extra caution when operating over rough ground, on slopes, and when turning.
- Note and avoid all hazards and obstructions such as ditches, underground lines, trees, cliffs, overhead electrical wires or areas where there is danger of a slide.
- Carry loads in recommended positions for maximum stability.
- Never lift loads in excess of capacity.
- Use the recommended machine ballast and counterweighting.
- Know and understand the job site traffic flow patterns and obey signalmen, road signs and flagmen.

- Know and understand that job site conditions may change on an hourly basis. Hills of dirt, debris or obstructions may grow and change from the time you began the day. It is your responsibility to monitor the changes and keep the machine, tools and attachments, etc. a safe distance.
  - Watch for bystanders and never allow anyone to be under or to reach through the machine and its equipment while operating.
  - Select a gear that will prevent excessive speed when going downhill. Do not coast downhill.
  - When roading a machine, know and use the signaling devices required on the machine. Provide an escort for roading where required.
  - Use the recommended transport devices when roading the machine.
  - Before you operate at night, check that all lamps illuminate.
  - If your machine has a cab make sure that all windows are clean and that the windshield wipers work correctly.
  - Engine exhaust fumes can cause death. If you operate this machine in an enclosed area, make sure there is ventilation to replace the exhaust fumes with fresh air.
  - Check all controls in a clear area and make sure the machine is operating correctly.
  - Confirm that the attachment is properly mounted to the mounting mechanism as specified by the manufacturer.
  - Dust, fog, smoke, etc., can decrease your vision and cause an accident. Stop the machine or decrease the speed until you can see.
  - Contact with high voltage power lines, underground cables, etc., can cause serious injury or death from electrocution.
  - Before you drive or operate in an area with high voltage lines, cables, or a power station, tell the power or utility company what you are going to do. **YOU MUST HAVE THE POWER DISCONNECTED OR KEEP A SAFE WORKING DISTANCE** from the lines, cables, or power station. Keep all parts of the machine a safe distance away from the power source. You must also know any federal, state/provincial, or local safety codes or regulations that apply to the job site.
2. If you can break contact, reverse the operation that caused contact with the high voltage power, and move the machine away from the danger area. If you cannot break contact stay in the machine until the utility company de-energizes the line and tells you that the power is off.
- If you have extreme conditions, such as a fire, or contact with power lines, etc. and you are forced to leave the machine, do not step off the machine. Jump as far from the machine as possible with your feet together and do not touch the ground with your hands.
  - Do not operate the machine if you do not feel well. This can be dangerous for you and for the people around you.
  - You must make a judgment if weather, road, or earth conditions will permit safe operation on a hill, ramp, or rough ground.
  - Stay away from hazardous areas such as ditches, overhangs, etc. Walk around the work area before you start and look for hazards.
  - Be alert and always know the location of all workers in your area. Keep all other persons completely away from your machine. Injury or death can result if you do not follow these instructions.
  - Develop fluid and smooth operating techniques and maintain the surface condition where the machine travels in order to control vibration transfer to the operator.

**If a part of the machine touches high voltage power:**

1. Warn other workers **NOT TO TOUCH THE MACHINE** and to stay away from the machine.

### Maintenance Precautions

- Do not attempt repairs unless trained. Refer to manuals and experienced repair personnel for help.
- Never make repairs on pressurized components, fluid, gas or mechanical until the pressure has been relieved according to proper service procedures in the Repair Manual.



BD06A082

Figure 8

- Before you service the machine, put a **DO NOT OPERATE TAG** on the key switch. Make sure that the machine is clearly “tagged out”.
- Wear protective glasses and other required safety equipment when servicing or repairing the machine.
- Wear gloves to protect hands when handling cable.
- Disconnect the battery before working on the electrical system. Know the consequences of disconnecting any electronic or computer devices.
- Avoid lubrication or mechanical adjustments with the machine in motion or the engine operating. If the engine must be in operation to make certain adjustments, place the transmission in neutral, apply the parking device, place the equipment in a safe position, securely block the wheels and use extreme caution.
- Securely block the machine or any component that may fall before working on the machine or component. If possible, use a back up or secondary blocking device, also.
- To prevent unexpected movement, securely block working elements when repairing or changing working tool parts such as cutting edges.
- Use extreme caution when removing radiator caps, drain plugs, grease fittings or pressure taps. Park the machine and let it cool before opening a pressurized tank.

- Release all pressure before working on systems which have an accumulator.
- Use a piece of cardboard, newspaper, or wood to check for pressurized leaks to prevent fluid penetrating the skin. Pressurize accumulators with the proper gas according to manufacturer's recommendations.
- When inflating tires, use a self-attaching inflation chuck with remote shutoff and stand clear of the tire. Position yourself beside the tire and not beside the rim.
- When absolutely necessary to tow the machine, do not exceed the recommended towing speed. Be sure the towing machine has sufficient braking capacity to stop the towed load. If the towed machine cannot be braked, a towbar must be used or two towing machines must be used. - one in front pulling and one in the rear to act as a brake. Avoid towing over long distances. Towing this machine is not recommended.
- Observe proper maintenance procedures.
- Whenever servicing or replacing hardened pins, etc., use a brass drift or other suitable material between the hammer and pin. Alternative: Use a brass hammer, drift or suitable material on the pin, etc.
- Keep the brakes and steering systems in good operating condition.
- Replace all missing, illegible or damaged safety signs. Keep all safety signs clean.

### FUEL HANDLING PRECAUTIONS

- Do not smoke or permit open flames while fueling or near fueling operations.
- Never remove the fuel cap or refuel gasoline engine powered machines with the engine running or hot. Never allow fuel to spill on hot machine components. Never allow fuel to spill on the environment.
- To avoid spilling fuel maintain control of the fuel filler nozzle when filling the tank.
- Do not fill the fuel tank completely to the top. Allow room for expansion.
- Clean up spilled fuel immediately and dispose of contaminated material in an environmentally correct manner.
- Tighten the fuel tank cap securely. Should the fuel cap be lost, replace it only with the original manufacturer's approved cap. Use of a non-approved cap without proper venting may result in pressurization of the tank.
- Never use fuel for cleaning purposes.
- Use the correct fuel grade for the operating season.


**BURN PREVENTION**

**WARNING: BATTERY ACID CAUSES SEVERE BURNS.** Batteries contain sulfuric acid. Avoid contact with skin, eyes or clothing.

Antidote: EXTERNAL - Flush with water.

Antidote: INTERNAL - Drink large quantities of water or milk.

**DO NOT** induce vomiting. Seek medical attention immediately.

 **EYES** - Flush with water for 15 minutes and seek medical attention immediately.

**WARNING: BATTERIES PRODUCE EXPLOSIVE GASES.** Keep sparks, flame, cigars and cigarettes away. Ventilate when charging or using in enclosed area. Always wear eye protection when working near batteries. Wash hands after handling. **KEEP OUT OF REACH OF CHILDREN.** Failure to comply could result in injury or death.

M144B

Figure 9

- When the battery electrolyte is frozen, the battery can explode if, you try to charge the battery, or you try to jump start and run the engine. To prevent the battery electrolyte from freezing, try to keep the battery at full charge. If you do not follow these instructions, you or others in the area can be injured.
- Hot coolant can spray out if the radiator cap is removed. To remove the radiator cap, let the cooling system cool, turn to the first notch, wait until the pressure is released, then remove the radiator cap.
- Confirm that all components, hydraulic, engine, etc., are cool before attempting service procedures.

**HAZARDOUS CHEMICAL PRECAUTIONS**

- If you are exposed to or come in contact with hazardous chemicals you can be seriously injured. The fluids, lubricants, paints, adhesives, coolants, etc., used with your machine can be hazardous.
- Before you service this machine and before you dispose of the old fluids and lubricants, always remember the environment. **DO NOT** put oil or fluids into the ground or into containers that can leak.
- Check with your local environmental or recycling center or your dealer for correct disposal information.

**TRANSPORTING PRECAUTIONS**

- Know the rules, laws, and safety equipment necessary for transporting this machine on a road or highway.

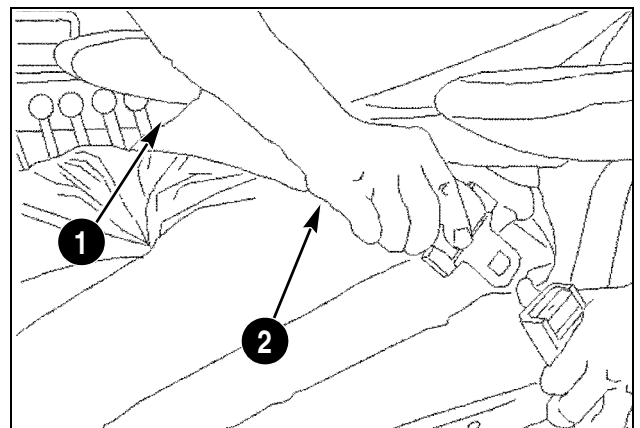
**ROLL-OVER PROTECTIVE STRUCTURE**

- Do NOT modify the ROPS in any manner. Unauthorized modifications such as welding, drilling, cutting, or adding attachments can weaken the structure and reduce your protection. Replace ROPS if it is subjected to roll-over or damage. Do not attempt to repair.

**FIRE EXTINGUISHER**

- It is recommended that you have a fire extinguisher on your machine. Contact your dealer for the type and location of a fire extinguisher on this machine

**SEAT BELT PRECAUTIONS**



B101H141

Figure 10

1. RETRACTABLE PORTION OF THE SEAT BELT
2. BUCKLE PORTION OF THE SEAT BELT

Pull the seat belt retractable portion (1) across the operator and buckle securely with the buckle portion (2).


 **WARNING:** Before starting the engine ensure the seat belt is securely fastened. The seat belt can help ensure your safety if it is used and properly maintained. Never wear a seat belt loosely or with slack in the belt system. Never wear the belt in a twisted condition or pinched between the seat structural members. Failure to comply could result in injury or death.

Figure 11


 **WARNING:** Securely fasten your seat belt. Your machine is equipped with a ROPS cab, ROPS canopy or ROPS frame for your protection. The seat belt can help ensure your safety if it is used and maintained. Failure to comply could result in injury or death.

Figure 12



**Suggest:**

**If the above button click is invalid.**

**Please download this document**

**first, and then click the above link**

**to download the complete manual.**

**Thank you so much for reading**

**Specific Precautions to this Machine**

- Keep the load or tool as low as possible while moving the machine around the jobsite.
- If you service the machine with the loader lift arms raised, always use the support strut.

**WARNING:** *If you service the machine with the loader lift arms raised, always use the support strut.*

1. Empty the loader bucket, raise the loader lift arms to maximum height and stop the engine.
2. Remove the rear pin from the support strut and lower the support strut onto the cylinder rod.
3. Install the rear pin in the support strut.
4. Slowly lower the lift arms onto the support strut.



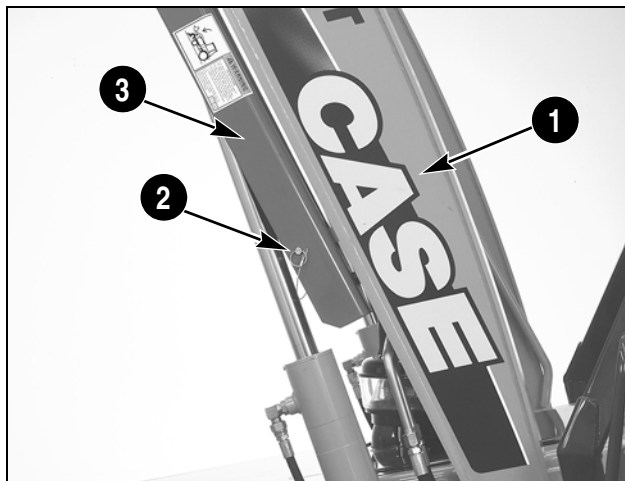
*If you do not follow this procedure, you can cause death or serious injury if the loader lift arms are lowered unexpectedly.*

SA068

Figure 13

**INSTALLING THE SUPPORT STRUT FOR LOADER LIFT ARMS**

1. Keep all unauthorized personnel clear of the area. Park the machine on firm, level ground.

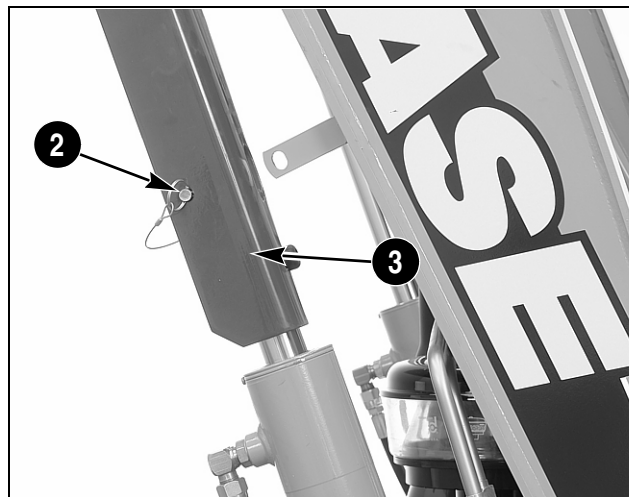


BD08D073

Figure 14

**LOADER LIFT ARM**

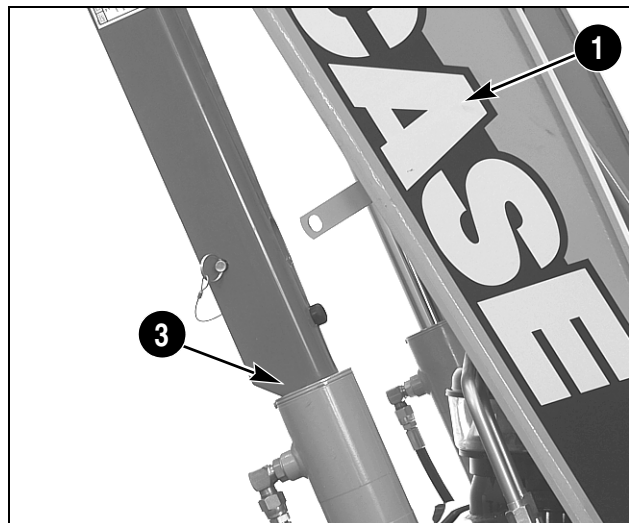
2. Raise the loader lift arms (1) to maximum height and stop the engine.
3. Remove the support strut pin (2), and lower the support strut (3) onto the cylinder rod.



BD08D074

Figure 15

4. Install the support strut pin (2) onto the support strut (3).



BD08D075

Figure 16

5. Slowly lower the lift arms (1) until the support strut (3) makes contact with the cylinder, as shown.

**Removing the loader support strut:**

1. Raise the loader lift arms, and remove the pin from the support strut.
2. Raise the support strut up to the storage position, and install the pin.
3. Lower the attachment to the ground.

**<https://www.ebooklibonline.com>**

Hello dear friend!

Thank you very much for reading.

Enter the link into your browser.

The full manual is available for immediate download.

**<https://www.ebooklibonline.com>**