

# SERVICE MANUAL

## **Boomer™ 30 ROPS / Boomer™ 35 ROPS** **Compact Tractor**

*Boomer™ 30 - From PIN 0 to 2107013768; From PIN 2107013769 to 2107015119; PIN 2107015120 and above;*  
*Boomer™ 35 - From PIN 0 to 2109014283; From PIN 2109014284 to 2109016018; PIN 2109016019 and above*

Part number 47916997

1<sup>st</sup> edition English

November 2016





## **SERVICE MANUAL**

**Boomer™ 30 [0 - 2107013768] , Boomer™ 30 [2107013769 - 2107015119] ,  
Boomer™ 30 [2107015120 - ] , Boomer™ 35 [0 - 2109014283] , Boomer™ 35  
[2109014284 - 2109016018] , Boomer™ 35 [2109016019 - ]**

# Link Product / Engine

---

<b>Product</b>	<b>Market Product</b>	<b>Engine</b>
Boomer™ 30 [0 - 2107013768]	Europe	S4L2
Boomer™ 30 [2107013769 - 2107015119]	Europe	S4L2
Boomer™ 30 [2107015120 - ]	Europe	S4L2
Boomer™ 35 [0 - 2109014283]	Europe	S4L2
Boomer™ 35 [2109014284 - 2109016018]	Europe	S4L2
Boomer™ 35 [2109016019 - ]	Europe	S4L2

**<https://www.ebooklibonline.com>**

Hello dear friend!

Thank you very much for reading.

Enter the link into your browser.

The full manual is available for immediate download.

**<https://www.ebooklibonline.com>**

# Contents

---

## INTRODUCTION

<b>Engine</b> .....	<b>10</b>
[10.001] Engine and crankcase .....	10.1
[10.202] Air cleaners and lines .....	10.2
[10.206] Fuel filters .....	10.3
[10.400] Engine cooling system .....	10.4
[10.304] Engine lubrication system.....	10.5
<b>Clutch</b> .....	<b>18</b>
[18.100] Clutch mechanical release control .....	18.1
[18.104] Clutch hydraulic release control.....	18.2
[18.110] Clutch and components .....	18.3
[18.112] Slip clutch or flywheel damper .....	18.4
<b>Transmission</b> .....	<b>21</b>
[21.114] Mechanical transmission .....	21.1
[21.130] Mechanical transmission external controls.....	21.2
[21.140] Mechanical transmission internal components.....	21.3
<b>Four-Wheel Drive (4WD) system</b> .....	<b>23</b>
[23.101] Mechanical control .....	23.1
[23.304] Four-Wheel Drive (4WD) gearbox .....	23.2
<b>Front axle system</b> .....	<b>25</b>
[25.100] Powered front axle .....	25.1
[25.310] Final drives .....	25.2
<b>Rear axle system</b> .....	<b>27</b>
[27.106] Rear bevel gear set and differential .....	27.1
[27.120] Planetary and final drives .....	27.2
<b>Hydrostatic drive</b> .....	<b>29</b>

[29.100] Transmission and steering hydrostatic control .....	29.1
[29.202] Hydrostatic transmission .....	29.2
[29.218] Pump and motor components.....	29.3
<b>Power Take-Off (PTO).....</b>	<b>31</b>
[31.101] Rear mechanical control .....	31.1
[31.104] Rear electro-hydraulic control.....	31.2
[31.110] One-speed rear Power Take-Off (PTO) .....	31.3
[31.120] Central Power Take-Off (PTO).....	31.4
<b>Brakes and controls .....</b>	<b>33</b>
[33.110] Parking brake or parking lock .....	33.1
[33.120] Mechanical service brakes .....	33.2
<b>Hydraulic systems.....</b>	<b>35</b>
[35.000] Hydraulic systems.....	35.1
[35.104] Fixed displacement pump.....	35.2
[35.114] Three-point hitch control valve .....	35.3
[35.116] Three-point hitch cylinder .....	35.4
[35.204] Remote control valves .....	35.5
[35.300] Reservoir, cooler, and filters.....	35.6
[35.350] Safety and main relief valves .....	35.7
<b>Hitches, drawbars, and implement couplings.....</b>	<b>37</b>
[37.110] Rear three-point hitch .....	37.1
<b>Steering.....</b>	<b>41</b>
[41.106] Tie rods.....	41.1
[41.200] Hydraulic control components.....	41.2
[41.216] Cylinders .....	41.3
<b>Wheels .....</b>	<b>44</b>
[44.511] Front wheels.....	44.1

[44.520] Rear wheels .....	44.2
<b>Electrical systems .....</b>	<b>55</b>
[55.000] Electrical system .....	55.1
[55.010] Fuel injection system.....	55.2
[55.011] Fuel tank system .....	55.3
[55.012] Engine cooling system .....	55.4
[55.013] Engine oil system .....	55.5
[55.031] Parking brake electrical system.....	55.6
[55.048] Rear Power Take-Off (PTO) control system .....	55.7
[55.100] Harnesses and connectors.....	55.8
[55.201] Engine starting system .....	55.9
[55.202] Cold start aid .....	55.10
[55.302] Battery.....	55.11
[55.404] External lighting .....	55.12
[55.405] External lighting switches and relays .....	55.13
[55.408] Warning indicators, alarms, and instruments .....	55.14
[55.523] Cab hitch controls .....	55.15
[55.525] Cab engine controls.....	55.16
[55.610] Ground speed control .....	55.17
<b>Platform, cab, bodywork, and decals.....</b>	<b>90</b>
[90.100] Engine hood and panels .....	90.1



# INTRODUCTION

# Contents

---

## INTRODUCTION

Foreword - Important notice regarding equipment servicing (*) .....	3
Safety rules - Personal safety (*) .....	4
Safety rules - Ecology and the environment (*) .....	16
Torque - Minimum tightening torques for normal assembly (*) .....	17
Standard torque data for hydraulics Standard torque data for hydraulics (*) .....	22
Basic instructions - Shop and assembly (*) .....	24
General specification (*) .....	26
General specification - Biodiesel usage (*) .....	31
Dimension (*) .....	34
Consumables (*) .....	37
Product identification (*) .....	38
Product identification - Machine orientation (*) .....	39

(\*) See content for specific models

---

## Foreword - Important notice regarding equipment servicing

Boomer™ 30	WE
Boomer™ 35	WE

All repair and maintenance work listed in this manual must be carried out only by qualified dealership personnel, strictly complying with the instructions given, and using, whenever possible, the special tools.

Anyone who performs repair and maintenance operations without complying with the procedures provided herein shall be responsible for any subsequent damages.

The manufacturer and all the organizations of its distribution chain, including - without limitation - national, regional, or local dealers, reject any responsibility for damages caused by parts and/or components not approved by the manufacturer, including those used for the servicing or repair of the product manufactured or marketed by the manufacturer. In any case, no warranty is given or attributed on the product manufactured or marketed by the manufacturer in case of damages caused by parts and/or components not approved by the manufacturer.

The manufacturer reserves the right to make improvements in design and changes in specifications at any time without notice and without incurring any obligation to install them on units previously sold. Specifications, descriptions, and illustrative material herein are as accurate as known at time of publication but are subject to change without notice.

In case of questions, refer to your NEW HOLLAND Sales and Service Networks.

## Safety rules - Personal safety

Boomer™ 30	WE
Boomer™ 35	WE

### General safety rules

Read this manual carefully before starting, using carrying out maintenance, refueling or performing any other type of operation on the tractor.

Read all the safety decals on the tractor and follow the instructions thereon before starting, operating, refueling or carrying out maintenance on the tractor. Promptly replace any decals that are damaged, lost or illegible. Clean the decals if they are covered by mud or debris.

The tractor must only be used by responsible personnel, trained in tractor use and authorized to operate the tractor.

Use caution when operating the tractor on slopes. Raised equipment, full tanks and other loads will change the center of gravity of the tractor. The tractor can tip or roll over when near ditches and embankments or uneven surfaces.

Avoid using the tractor in unsuitable physical conditions, stop work instead.

Never permit anyone other than the operator to ride on the tractor.

Never operate the tractor under the influence of alcohol, drugs, or while otherwise impaired.

When digging or using ground engaging attachments be aware of buried cables. Contact local utilities to determine the locations of services.

Pay attention to overhead power lines and hanging obstacles. High voltage lines may require significant clearance for safety.

Hydraulic oil or diesel fuel leaking under pressure can penetrate the skin, causing serious injury or infection.

- DO NOT use your hand to check for leaks. Use a piece of cardboard or paper.
- Stop engine, remove key and relieve the pressure before connecting or disconnecting fluid lines.
- Make sure all components are in good condition and tighten all connections before starting the engine or pressurizing the system.
- If hydraulic fluid or diesel fuel penetrates the skin, seek medical attention immediately.
- Continuous long term contact with hydraulic fluid may cause skin cancer. Avoid long term contact and wash the skin promptly with soap and water.
- Before removing any hydraulic tubing, check that the system is not pressurized.

Do not alter the calibration of the pressure relief valves in the various hydraulic circuits (steering, hydraulic lift, auxiliary distributors, etc.).

Keep clear of moving parts. Loose clothing, jewelry, watches, long hair, and other loose or hanging items can become entangled in moving parts.

Wear protective equipment when appropriate.

DO NOT attempt to remove material from any part of the tractor while it is being operated or components are in motion.

Make sure all guards and shields are in good condition and properly installed before operating the tractor. Never operate the tractor with shields removed. Always close access doors or panels before operating the tractor.

Enter and leave the tractor using the steps and handles provided. Dirty or slippery steps, ladders, walkways, and platforms can cause falls. Make sure these surfaces remain clean and clear of debris.

A person or pet within the operating area of a tractor can be struck or crushed by the tractor or its equipment. DO NOT allow anyone to enter the work area.

Raised equipment and/or loads can fall unexpectedly and crush persons underneath. Never allow anyone to enter the area underneath raised equipment during operation.

## INTRODUCTION

---

Never operate engine in enclosed spaces as harmful exhaust gases may build up.

Before starting the tractor, be sure that all controls are in neutral or park lock position.

Before starting the engine, make sure that all attached implements are lowered to the ground.

Start the engine only from the operator's seat. If the safety start switch is bypassed, the engine can start with the transmission in gear. Do not connect or short across terminals on the starter solenoid. Attach jumper cables as described in the manual. Starting in gear may cause death or serious injury.

Always keep windows, mirrors, all lighting, and Slow Moving Vehicle (SMV) emblem clean to provide the best possible visibility while operating the tractor.

Operate controls only when seated in the operator's seat, except for those controls expressly intended for use from other locations.



# **SERVICE MANUAL**

## **Engine**

**Boomer™ 30 [0 - 2107013768] , Boomer™ 30 [2107013769 - 2107015119] ,  
Boomer™ 30 [2107015120 - ], Boomer™ 35 [0 - 2109014283], Boomer™ 35  
[2109014284 - 2109016018] , Boomer™ 35 [2109016019 - ]**

# CONSUMABLES INDEX

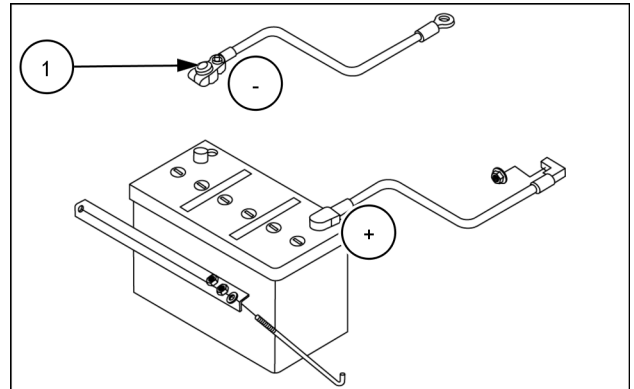
---

<b>Consumable</b>	<b>Reference</b>	<b>PAGE</b>
NEW HOLLAND AMBRA MASTERGOLD™ HSP ENGINE OIL SAE 15W-40	Engine lubrication system - Change fluid	10.5 / 4
NEW HOLLAND AMBRA MASTERGOLD™ HSP ENGINE OIL SAE 10W-30	Engine lubrication system - Change fluid	10.5 / 4
NEW HOLLAND AMBRA MASTERGOLD HSP SAE 5W-30	Engine lubrication system - Change fluid	10.5 / 4

## Engine - Remove

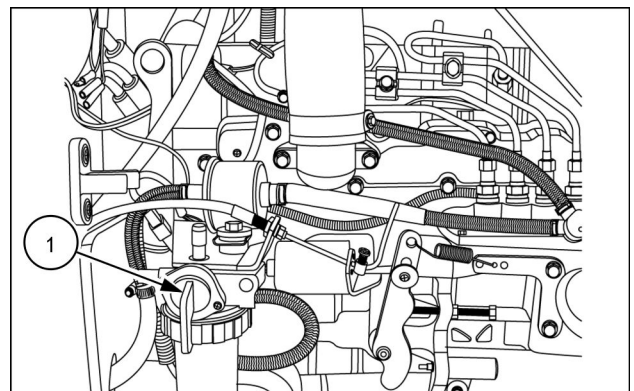
Boomer™ 30	WE
Boomer™ 35	WE

1. Chock all four wheels so that the tractor cannot move.
2. Disconnect the negative (-) battery cable (1).
3. Disconnect the headlight wire harness.



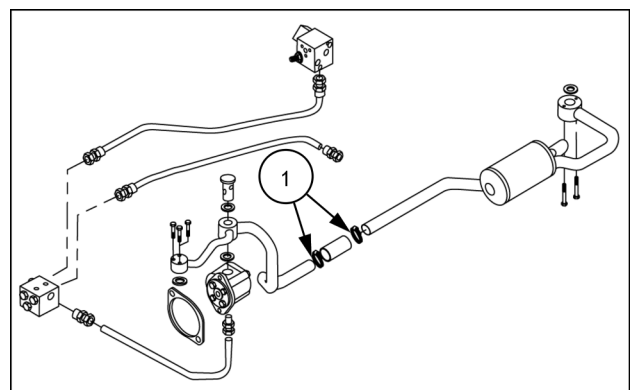
93102237 1

4. Remove the hood. See **Hood - Remove (90.100)** for more information.
5. Disconnect the main and engine wire harnesses.
6. Turn off fuel supply at the filter (1), and disconnect fuel hose.



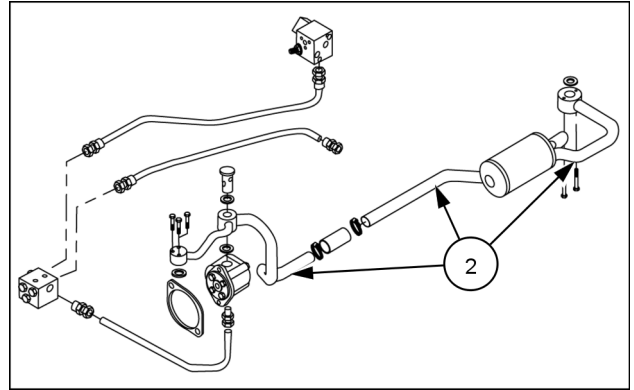
93102239 2

7. Position a drain pan to collect drain oil and remove clamps (1).



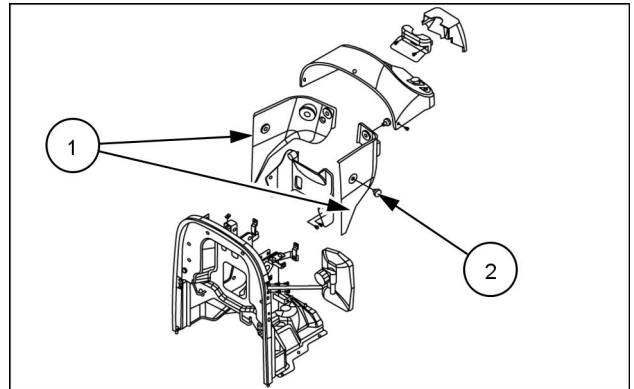
93102240 3

8. Disassemble the suction tube assembly **(2)**.



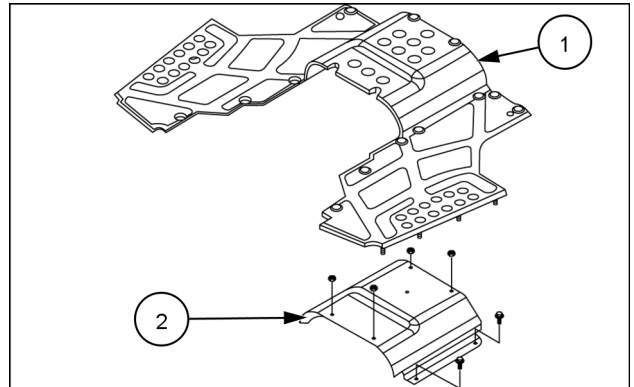
93102240 4

9. Remove the knobs **(2)** on both rear cover halves **(1)** and remove.



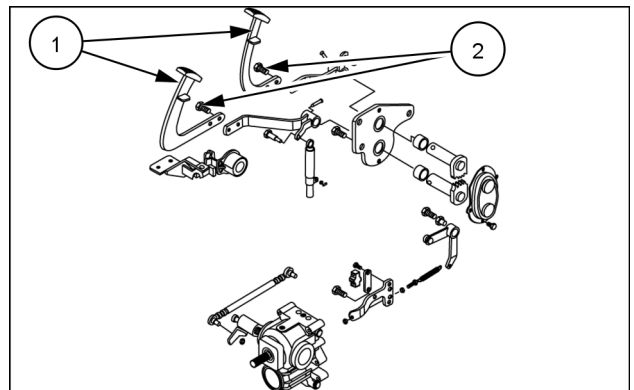
93102241 5

10. Remove the mat **(1)** and Unscrew the M8 nuts and bolts and remove cover **(2)**.



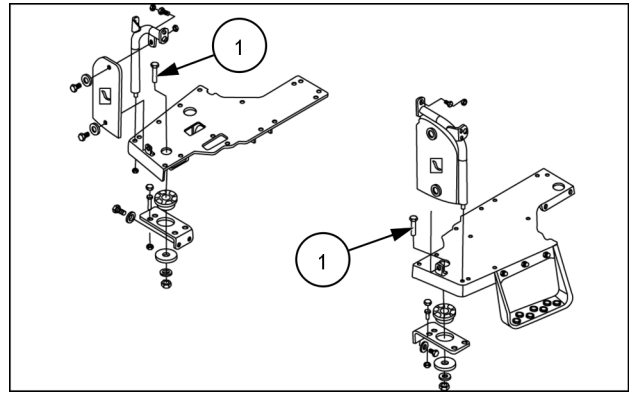
93102242 6

11. Remove the bolts **(2)** and remove the pedals **(1)**.



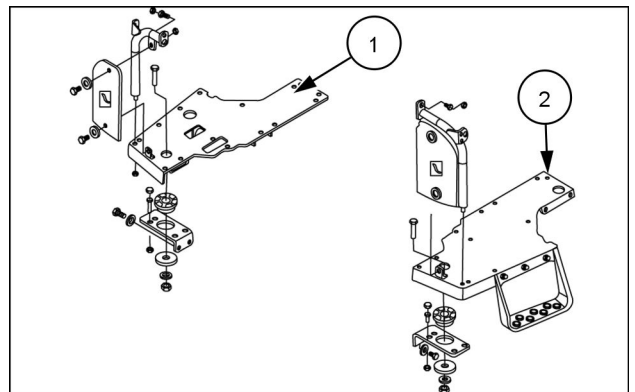
93102243 7

12. Remove the M8 and M24 bolts (1).



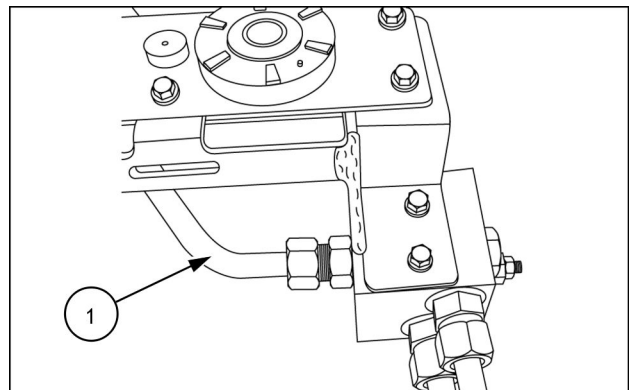
93102244 8

13. Remove the right-hand step (1) and left-hand step (2).



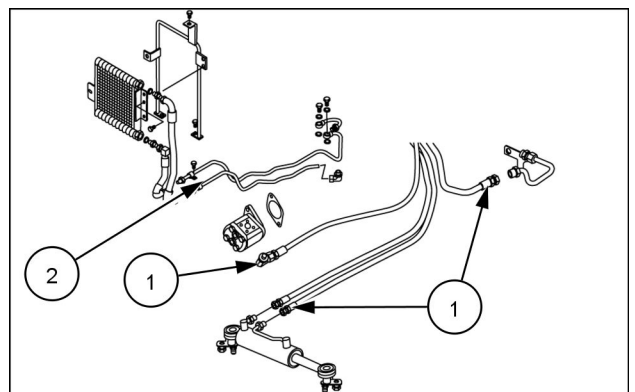
93102244 9

14. Disconnect the front high pressure tube (1).



93102245 10

15. Disconnect the steering hoses (1) and tubes (2).



93102246 11



**Suggest:**

**If the above button click is invalid.**

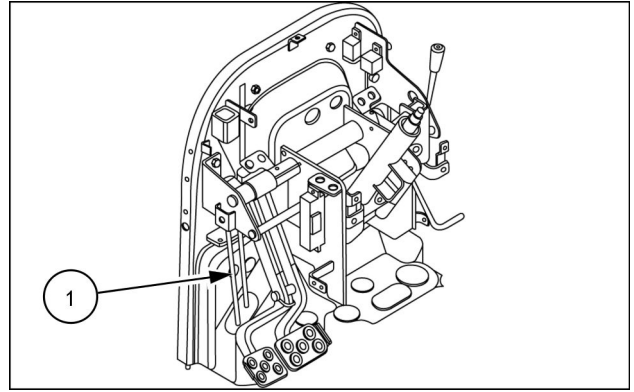
**Please download this document**

**first, and then click the above link**

**to download the complete manual.**

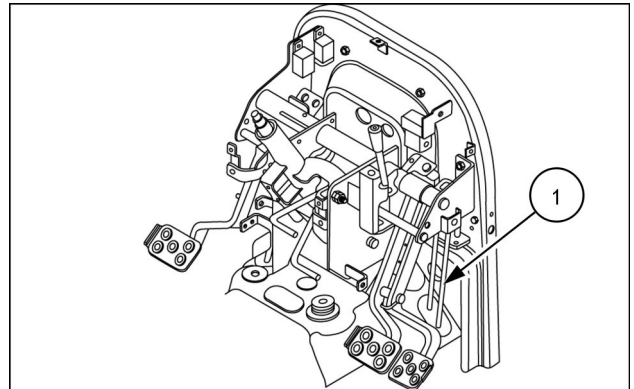
**Thank you so much for reading**

16. Disconnect the brake rod **(1)**; Hydrostatic or gear transmission.



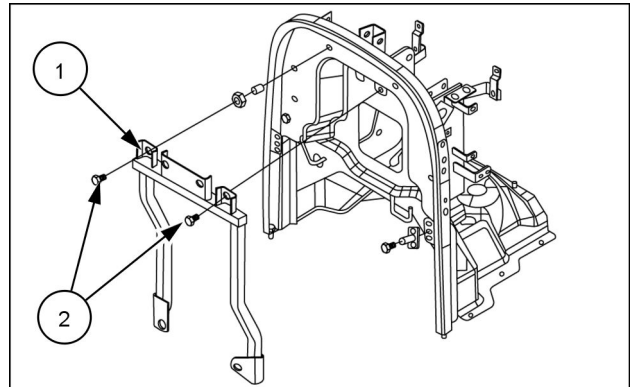
93102247 12

17. Disconnect the brake rod **(1)** on the right-hand side and clutch rod on the left-hand side; gear transmission only.



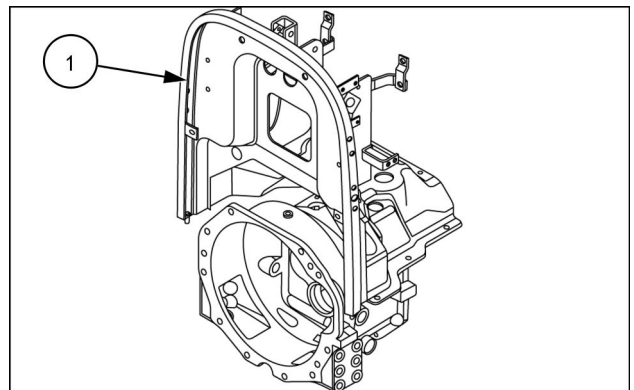
93102248 13

18. Remove bolts **(2)** securing the frame **(1)** to the firewall and remove the frame **(1)**.



93102251 14

19. Use a hoist to carefully remove the firewall **(1)**.



93102252 15

**<https://www.ebooklibonline.com>**

Hello dear friend!

Thank you very much for reading.

Enter the link into your browser.

The full manual is available for immediate download.

**<https://www.ebooklibonline.com>**