

8575 Baler & Accumulator

Table of Contents

DIVISION / SECTION	SECTION NO.	FORM NO.
1 GENERAL		
Index		Rac 7-81770-1
Introduction	1001	Rac 7-81780
Safety Rules, General Machine Specifications, and Standard Torque Specifications	1002	Rac 7-81790
Maintenance and Lubrication	1003	Rac 7-81800
Decals	1004	Rac 7-81810
2 DRIVE SYSTEM		
Index		Rac 7-81770-2
Connecting the Tractor, Implement Drive Line, Main Drive Shaft, and Main Drive Clutch	2001	Rac 7-81820
Flywheel, Flywheel Brake, and Gearbox	2002	Rac 7-81830
Auxiliary Drives	2003	Rac 7-81840
3 PICKUP		
Index		Rac 7-81770-3
Pickup Operation, Adjustments, Gauge Wheels, and Troubleshooting	3001	Rac 7-81850
4 ELECTRICAL SYSTEM		
Index		Rac 7-81770-4
Electrical Schematics and Troubleshooting	4001	Rac 7-81860
5 FEEDER AND PLUNGER		
Index		Rac 7-81770-5
Packer	5001	Rac 7-81870
Stuffer and Charge Chamber	5002	Rac 7-81880
Plunger	5003	Rac 7-81890
6 KNOTTER SYSTEM		
Index		Rac 7-81770-6
Knotter	6001	Rac 7-81900



7	MAINFRAME, BALE TENSION, AND WHEELS	
	Index	Rac 7-81770-7
	Mainframe and Bale Tension	7001 Rac 7-81910
	Axle, Wheels, and Tires	7002 Rac 7-81920
8	HYDRAULIC SYSTEM	
	Index	Rac 7-81770-8
	Hydraulic System Operation, Schematics, and Troubleshooting	8001 Rac 7-81930
	Control Valves	8002 Rac 7-81940
	Cylinders	8003 Rac 7-81950
9	OPTIONAL EQUIPMENT	
	Index	Rac 7-81770-9
	Centralized Lubrication System	9001 Rac 7-81960
	Accumulator, Bale Chutes, Bale Ejector, and Selector Valve	9002 Rac 7-81970

DIVISION 1

INDEX

1

SECTION TITLE	SECTION NUMBER
Introduction	1001
Safety Rules, General Machine Specifications, and Standard Torque Specifications	1002
Maintenance and Lubrication	1003
Decals	1004

<https://www.ebooklibonline.com>

Hello dear friend!

Thank you very much for reading.

Enter the link into your browser.

The full manual is available for immediate download.

<https://www.ebooklibonline.com>

Section 1001

INTRODUCTION

TABLE OF CONTENTS

General Information	1001-2
To Our Customer	1001-2
Introduction	1001-2
Serial Number Location	1001-3
Replacement Parts	1001-3
U. S. and Metric Units	1001-3
Table of Contents	1001-3
Page Numbers	1001-3

GENERAL INFORMATION

To Our Customer

We appreciate your confidence in our farm equipment and thank you for your patronage. In preparing this manual, we hope we have furnished you with a valuable tool for operating and maintaining this fine machine. Use this manual as your guide. Practicing the instructions given here will result in many years of dependable service from your machine.

Your Dealer can give you assistance with parts and specially trained personnel to assist you in repair and maintenance. Call your Dealer if you need any assistance or information.

Introduction

This service manual has been prepared with the latest service information available at the time of publication. Read the service manual carefully before doing any service on the baler. This manual is one of the most important tools available to the service technician.

Right and Left as used throughout this manual is determined by facing in the direction the machine will travel when in use.

The photos, illustrations, and data used in this manual were current at the time of printing, but due to possible production changes, your machine can vary slightly. The Manufacturer reserves the right to redesign and change the machine as necessary without notification.

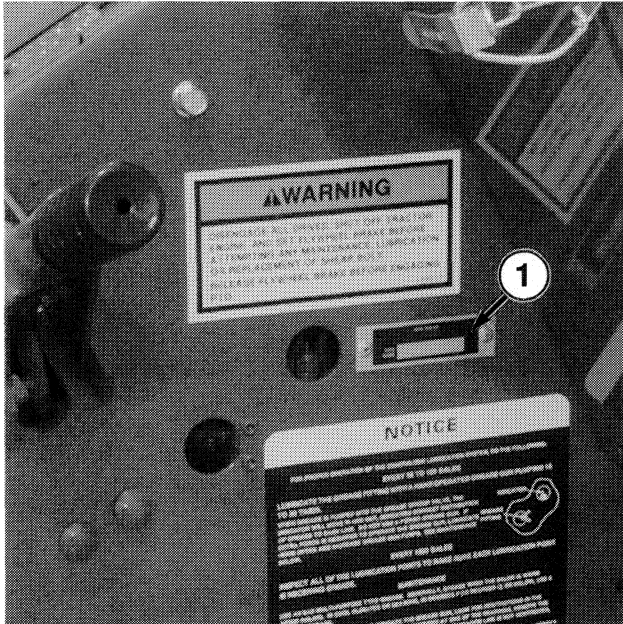


WARNING

Some pictures in this manual show the machine with shields or guards removed to allow for a better view of the subject of the picture. All shields and guards must be in position before operating the machine.

Serial Number Location

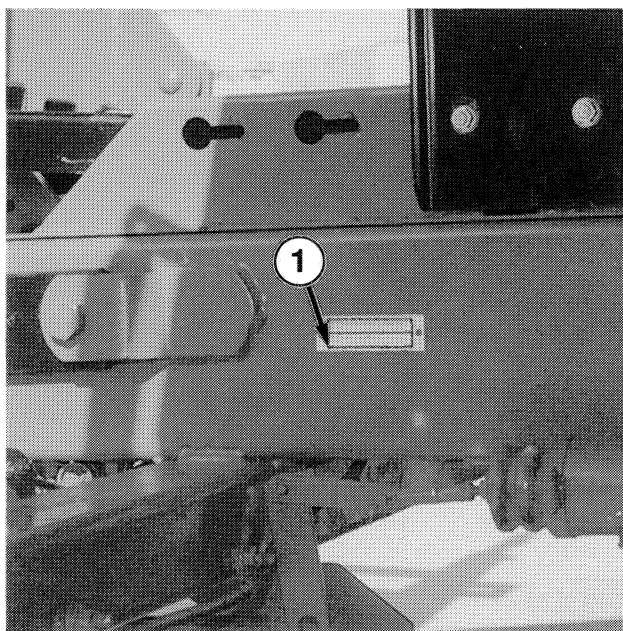
The serial number is important information about the machine. You will need the serial number when ordering some replacement parts. The baler serial number plate is located on the left-hand side of the tongue.



475B-97014-28

1. Serial Number Location on Baler

If the baler has an accumulator, the accumulator serial number plate is located on the left-hand side of the accumulator mainframe.



475B-97008-61

1. Serial Number Location on Accumulator

Replacement Parts

To obtain prompt, efficient service, always remember to give the dealer the following information:

1. Correct part number description.
2. Model number of the machine.
3. Serial number of the machine.

U.S. and Metric Units

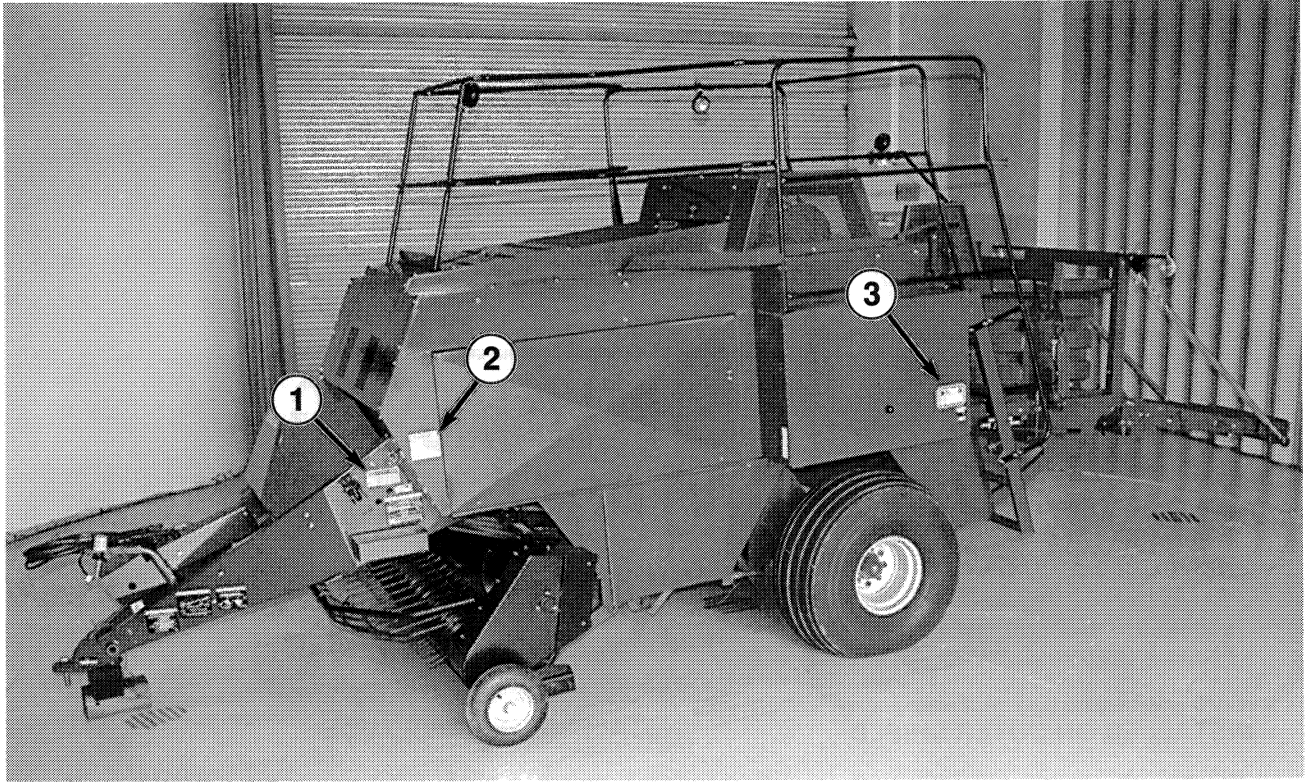
Measurements are given in U.S. units followed by their equivalent in metric units. Hardware sizes are given in inches for U.S. hardware and millimeters for metric hardware.

Table of Contents

A Table of Contents is in the front of this manual. The Table of Contents shows the divisions and the sections that are in each division. The individual divisions and sections also have a Table of Contents.

Page Numbers

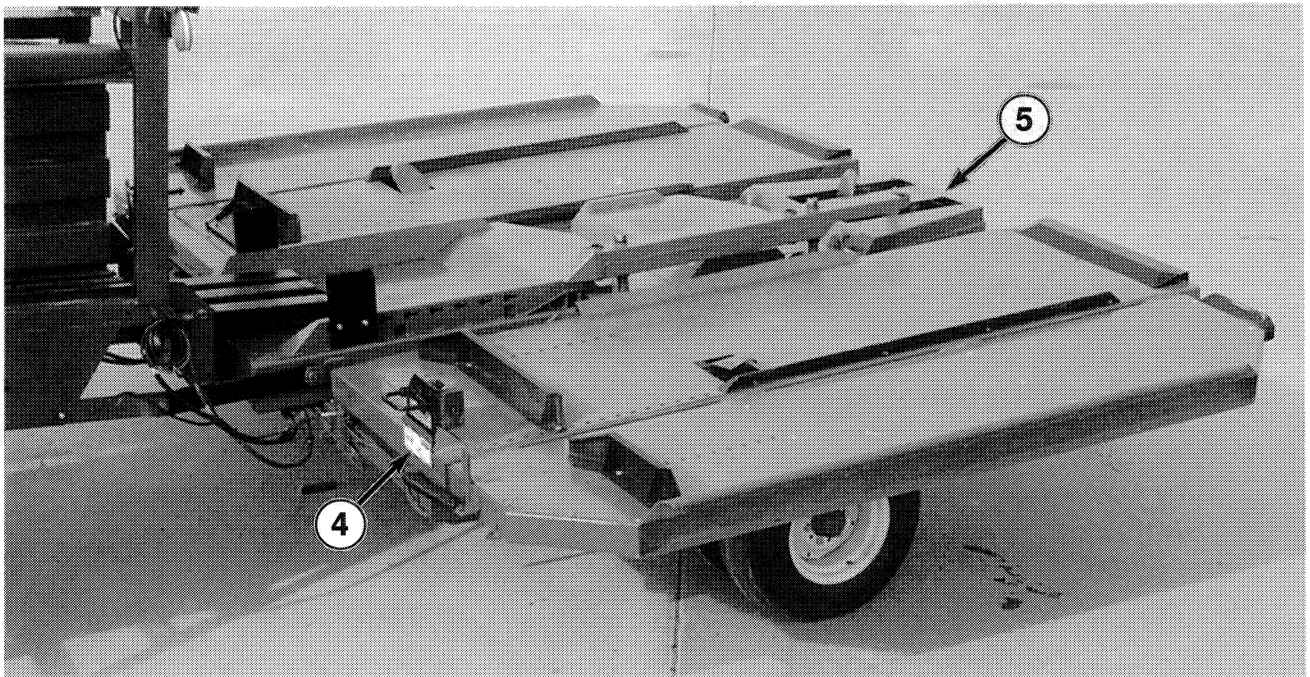
All page numbers are made of two numbers separated by a dash, such as 4001-9. The number before the dash is the section number. The number following the dash is the page number in that section. Page numbers will be at the upper right or left of each page.



49BB-97050-10

LOCATION OF DECALS

1. Flywheel
2. Baler Side Shield
3. Twine Box
4. Accumulator (4 places)
5. Back of Accumulator



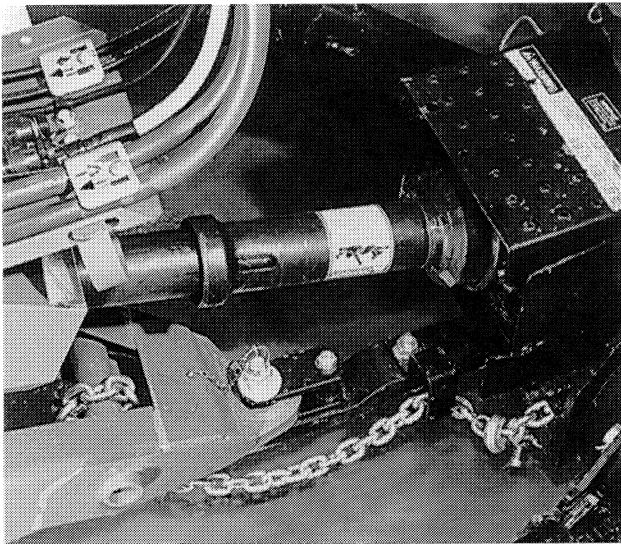
49BB-97008-36



INSTALLED ON OUTER SHIELD

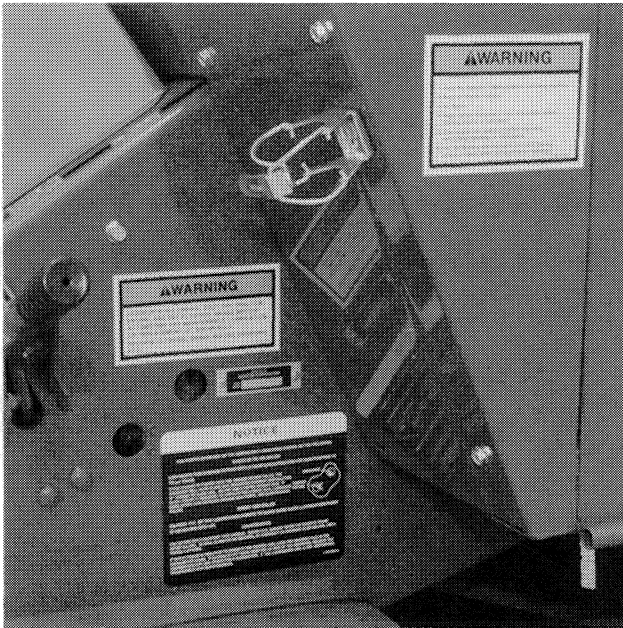


INSTALLED ON DRIVE TUBE



475B-94062-05

IMPLEMENT DRIVELINE



475B-97014-31

⚠ WARNING

DISENGAGE ALL DRIVES, SHUT OFF TRACTOR ENGINE, AND SET FLYWHEEL BRAKE BEFORE ATTEMPTING ANY MAINTENANCE, LUBRICATION OR REPLACEMENT OF SHEAR BOLT. RELEASE FLYWHEEL BRAKE BEFORE ENGAGING PTO.

8 888 216 D

1. FLYWHEEL

⚠ WARNING

- 1. Read the Operator's Manual before operating machine.**
- 2. Keep all shields in place.**
- 3. No Riders.**
- 4. Make certain everyone is clear of machine before starting engine or operation.**
- 5. Stop engine and operation before adjusting, lubricating, cleaning, or unclogging.**
- 6. Use the flashing warning lights and slow moving vehicle emblem when transporting on highways.**

700 714 229 B

2. BALER SIDE SHIELD



475B-97014-29

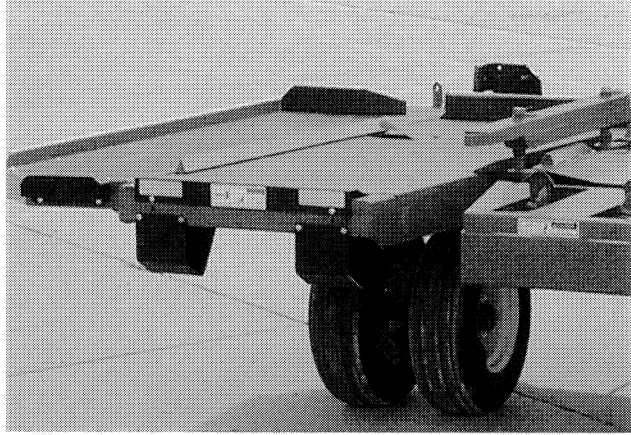
3. TWINE BOX (BOTH SIDES)

⚠ DANGER

SERIOUS INJURY CAN RESULT FROM THREADING THE NEEDLES OR ADJUSTING TWINE TENSIONERS WITH THE BALER RUNNING. THE NEEDLE FRAME CAN MOVE WITHOUT PUTTING HAY IN THE BALER. SHUT OFF PTO AND TRACTOR ENGINE.



475B-97008-40

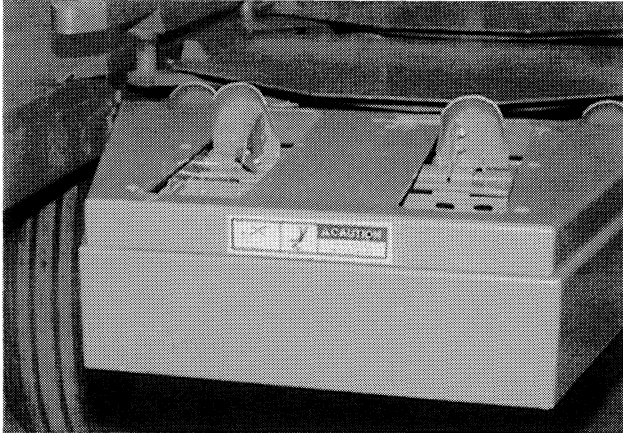
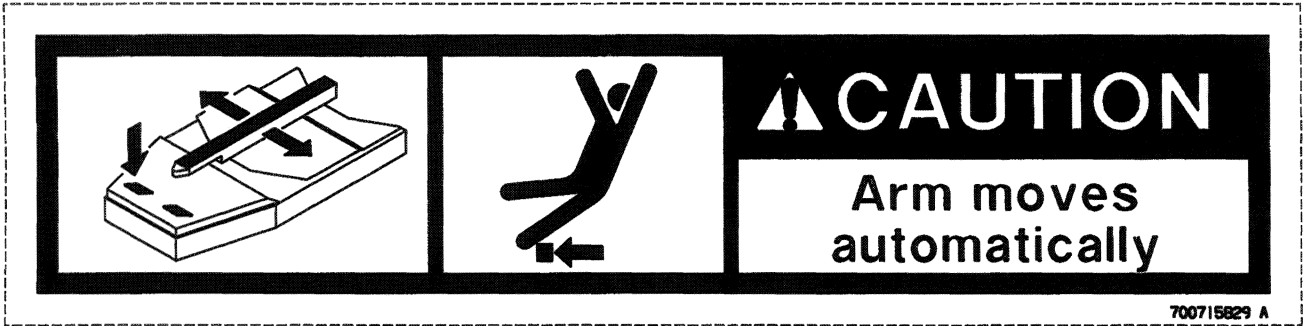


475B-97008-39

A schematic diagram of a tractor hitch with a bale. The hitch is shown from a side view, with a bale resting on the front. An arrow points to the right, indicating the direction of travel.	A schematic diagram of a tractor hitch with a bale falling. The hitch is shown from a side view, with a bale falling from the front. A downward arrow indicates the direction of the fall.	! WARNING -STAY CLEAR- -WIDE TURNS- -BALES DROP-
--	--	---

L 887763 C

4. (4 PLACES)



475B-97008-32

5. BACK OF ACCUMULATOR

DIVISION 2

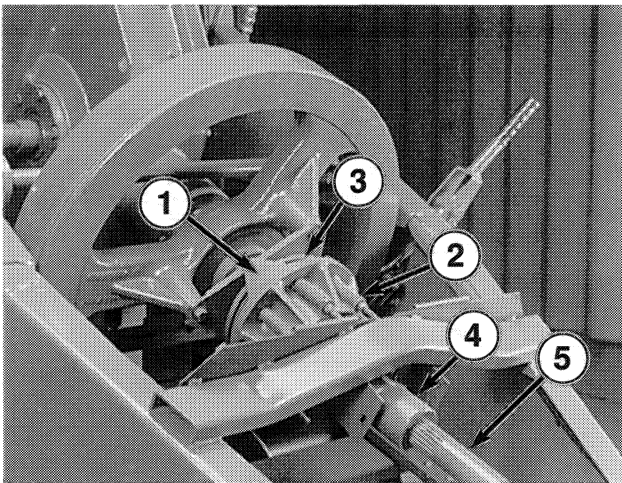
INDEX

SECTION TITLE	SECTION NUMBER
Connecting the Tractor, Implement Drive Line, Main Drive Shaft, and Main Drive Clutch	2001
Flywheel, Flywheel Brake, and Gearbox	2002
Auxiliary Drives	2003

2

GENERAL INFORMATION

The baler drive system is powered by a tractor PTO. The PTO must be a standard 1000 rpm (r/min) PTO. The baler uses an ASAE Category 6 drive line that has three U-joints between the tractor and the baler flywheel. The rear U-joint of the drive line is a part of the overrunning clutch in the main drive clutch. The main drive clutch is a combination of two clutches; an overrunning clutch and a slip clutch. The main drive clutch is connected to the flywheel. The flywheel is connected to the pinion shaft of the gearbox by a shearbolt. The gearbox is a double reduction enclosed gearbox which directly drives the plunger through the plunger cranks and the connecting rods.

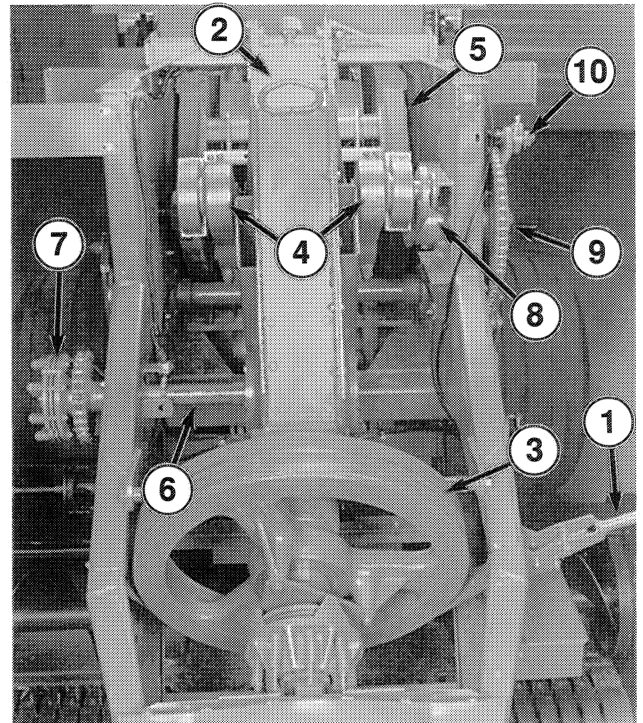


475B-90105-01

1. Main Drive Clutch
2. Overrunning Clutch
3. Slip Clutch
4. Splined Slip Joint
5. Main Drive Shaft

The crank arm on the left side of the gearbox also drives the needle protection arm. A shearbolt connects the needle protection arm to the stuffer/knotter drive sprocket. The stuffer/knotter drive sprocket drives the stuffer/knotter drive chain. The stuffer/knotter drive chain drives the stuffer, the knotters, and the needles. The stuffer/knotter drive chain also keeps the operation of the stuffer, the knotters, and the needles synchronized with the operation of the plunger.

An auxiliary drive shaft is connected to the right side of the gearbox. The auxiliary drive shaft drives the packer/pickup clutch. Through a series of drive chains, the packer/pickup clutch drives the packer, both augers, and the reel.



475B-90112-05

1. Flywheel Brake Lever
2. Gearbox
3. Flywheel
4. Plunger Crank Arms
5. Plunger
6. Auxiliary Drive Shaft
7. Packer/Pickup Clutch
8. Drive Arm
9. Stuffer/Knotter Drive Chain
10. Needle Protection Arm

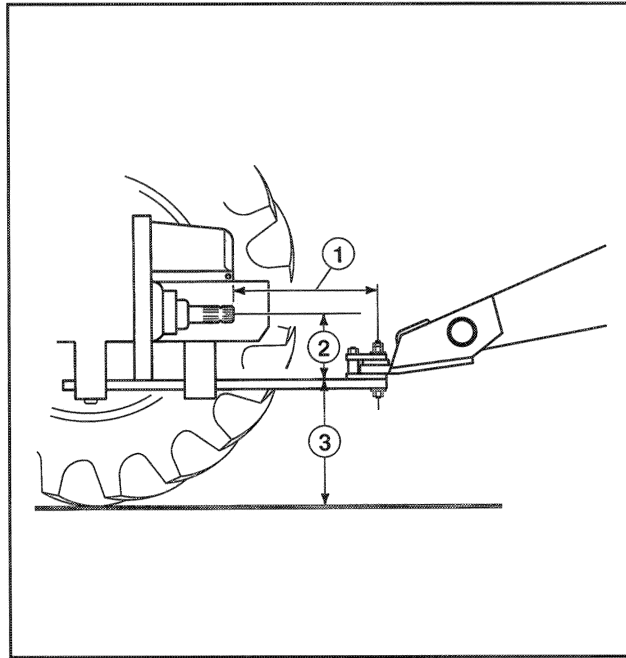
CONNECTING THE TRACTOR

Tractor Drawbar Dimensions and Implement Drive Line Alignment

The baler can be equipped or modified as required to properly operate with tractors equipped with an ASAE (American Society of Agricultural Engineers) Type 2 - 1-3/8 IN PTO.

The tractor drawbar must be set to ASAE standards for a tractor with a 1000 rpm (r/min) Type 2 PTO using a 1-3/8 IN, 21-tooth splined shaft. The dimensions are shown in the following illustration. Adjust the drawbar as necessary to meet the requirements for proper Type 2 IDL alignment and tongue position.

NOTE: The drawbar on some Type 3 - 1-3/4 IN PTO tractors can be adjusted to a 16 IN (406 mm) horizontal dimension from the PTO shaft to the drawbar hole. If the tractor meets the 16 IN (406 mm) dimension requirement, a Type 3 - 1-3/4-20 tooth spline yoke can be used on a Type 2 IDL. See your dealer for the correct yoke.



L90A-0072

TYPE 2 - 1-3/8 IN PTO

1. 16 IN (406 mm)
2. 6 to 12 IN (150 to 300 mm)
3. 15 to 22 IN (380 to 560 mm)



Suggest:

If the above button click is invalid.

Please download this document

first, and then click the above link

to download the complete manual.

Thank you so much for reading

TRACTOR CONNECTIONS

See the safety warnings at the beginning of this section and follow the procedures.

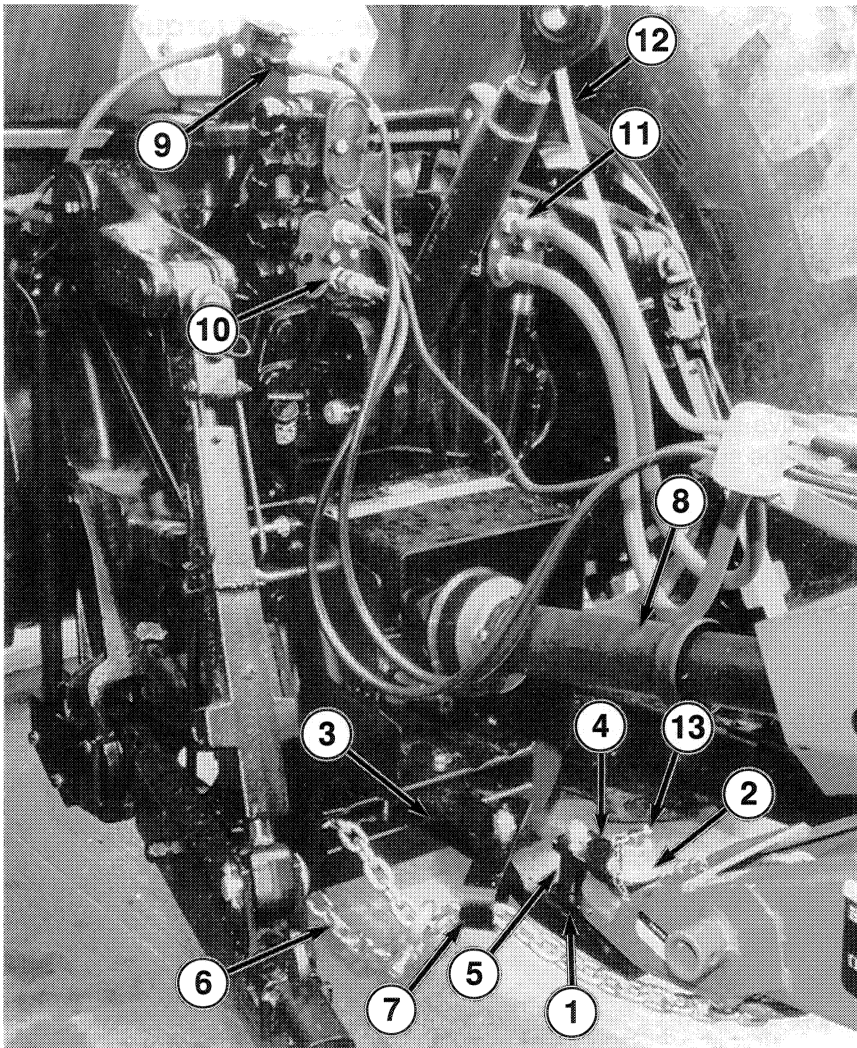
1. Check and, if necessary, adjust tractor drawbar dimensions to meet appropriate ASAE standards.

2. All hardware to attach the baler to the drawbar is provided with the baler. Always use Grade 5 hardware as provided. Put the bottom clevis plate on the drawbar. Install the 5/8 x 6 IN bolt and front spacer. Install the top clevis plate and top lock nut on the bolt. Do not tighten the nut. Rotate the top clevis plate toward the tractor. Lower the baler hitch ball onto the bottom clevis plate. Rotate the top clevis plate to align the rear hole with the hitch ball. Install a washer on the 1 x 7 IN bolt. Spacers are provided for drawbars that have large holes. If necessary, install a spacer on the bolt. Keep the spacers with the hitch parts at all times. Install the bolt

from the bottom of the drawbar with threaded end up to prevent catching on the windrow. Install a washer and a nut on the hitch bolt. Tighten the nut to 645 LB·FT (875 N·m). Install the 1 IN jam nut and tighten to 645 LB·FT (875 N·m). Install the Klik pin in the hole in the end of the hitch bolt to prevent losing the hitch bolt. Tighten the nut on the 5/8 IN bolt to 150 LB·FT (205 N·m).

NOTE: Use stop bolts to secure the drawbar in a stationary position directly beneath the tractor PTO shaft centerline. NEVER allow the drawbar to swing from side to side.

NOTE: On some tractors, it is recommended that a reinforcement be added to the drawbar to carry the weight of the baler when the bale chamber is empty. See General Machine Specifications in Section 1002 for the tongue weight.



1. Bottom Clevis Plate
2. 1 x 7 IN Bolt, Washer (2), Nut, Jam Nut
3. Tractor Drawbar
4. Top Clevis Plate
5. Spacer, 5/8 x 6 IN Bolt, Top Lock Nut
6. Safety Chain (provided with baler)
7. Support Clevis (provided with baler)
8. Implement Drive Line (IDL) Assembly
9. ASAE 7-Pin Plug for Lights
10. Pickup Lift Hoses
11. Baler Control Valve Hoses
12. Main Control Cable
13. Klik Pin - Safety for Hitch Bolt

475B-95007-16

<https://www.ebooklibonline.com>

Hello dear friend!

Thank you very much for reading.

Enter the link into your browser.

The full manual is available for immediate download.

<https://www.ebooklibonline.com>