

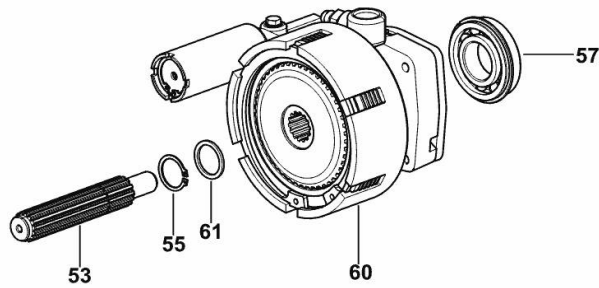
P.T.O. - ELECTROHYDRAULICALLY CONTROLLED HYDRAULIC CLUTCH

Fig.	P/n	QTY	Name
------	-----	-----	------

Notes:

[Virtus J 100 -> ZKDY450200TS10001] -> 10042

53	0.445.3930.0	1	shaft
55	2.1410.009.7	1	circlip 24
57	2.2043.009.0	1	ball bearing 30x62x16
60	0.012.7103.4/50	1	hydraulic PTO clutch ☞ 0.012.7103.4/50
61	2.1599.761.0	1	slewing ring 24x30x2



9_Y5239_00_0-A-002

P.T.O. - CLUTCH-PARTS

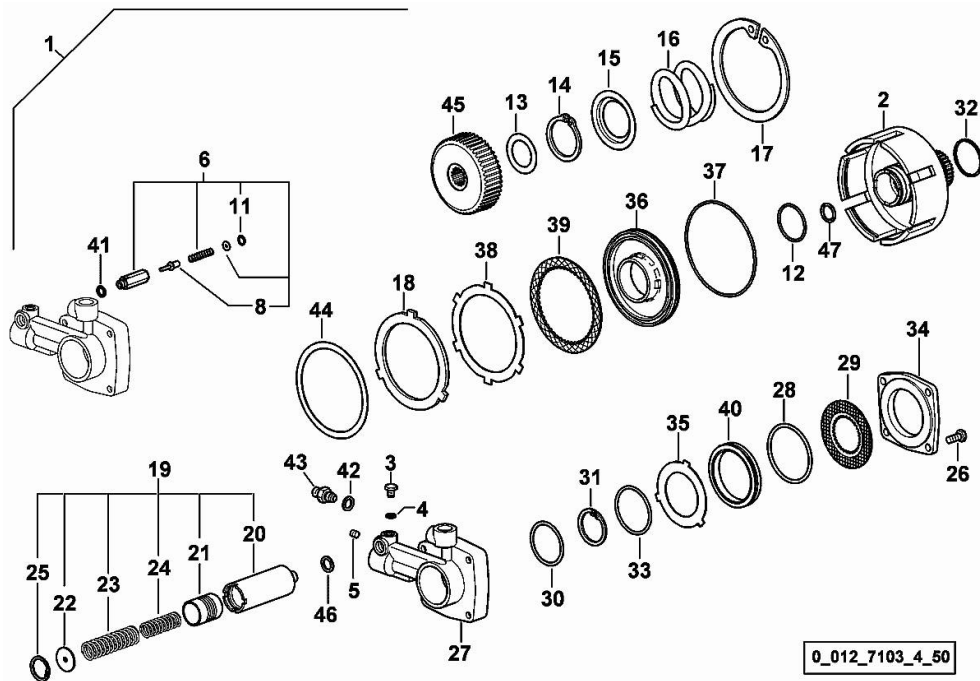


Fig.	P/n	QTY	Name
1	0.012.7103.4/50	1	hydraulic PTO clutch
2	0.008.4043.0/40	1	box
3	2.3110.428.1	1	plug m 8 p.1 x 10
4	2.1560.003.0	1	copper gasket 8.2 x 12
5	2.0512.202.7	1	screw m 8 p.1.25 x 8
6	0.009.2445.4/20	1	valve
8	0.009.2411.0/20	1	slider
11	2.1411.002.1	1	circlip
12	2.1539.067.0	1	special oil seal 44.12x2.72
13	2.1599.415.0	1	shoulder ring 35x52x1
14	2.1419.027.1	1	circlip 48
15	0.255.3933.0	1	disc
16	2.4019.373.1	1	spring 79.5x61.5x6.5
17	2.1419.035.1	1	circlip 127
18	0.255.3969.0/10	1	disc
19	0.010.0526.4/10	1	accumulator P.T.O.
20	0.010.0526.0	1	cylinder
21	0.010.0525.0	1	piston
22	2.1599.241.0	1	shoulder ring
23	2.4019.636.1	1	spring 20.8 x 27.2 x 3.2 x 86.5
24	2.4019.638.1	1	spring 14.2 x 19.4 x 2.6 x 58
25	2.1411.013.7	1	circlip Ø 32
26	2.0342.305.2	4	screw m 8 p.1.25 x 20
27	0.008.3063.0/40	1	spool valve
28	2.1532.505.0	1	oil seal 77.50 x 2.62
29	0.014.0360.2	1	brake disc
30	2.1599.416.0	1	shoulder ring 50x58x1
31	2.1419.027.1	1	circlip 48
32	2.1569.109.0/10	3	gasket 46 x 50 x 2.0
33	2.1532.150.0	1	oil seal 61.60x2.62
34	0.255.3926.0/10	1	cover
35	0.013.8983.0	1	disc mm 1.5
36	0.255.3938.0/40	1	piston
37	2.1539.064.0	1	special oil seal 120.33x2.62
38	0.013.9453.0	5	disc mm 1.75
39	0.255.3970.2/10	5	disc
40	0.255.3922.0/40	1	piston D 84
41	2.1560.005.0	1	copper gasket 10.2 x 14
42	2.1560.008.0	1	gasket 12.2 x 18
43	2.3339.453.2	1	pipe fitting m 12 p.1.25-1/2"
44	2.1599.499.0	1	shoulder ring 110 x 126.5 x 1.2
45	0.008.8806.0/20	1	hub
46	2.1560.010.0	1	gasket 14.2 x 20
47	2.1530.062.0	1	oil seal 23.81 x 2.62

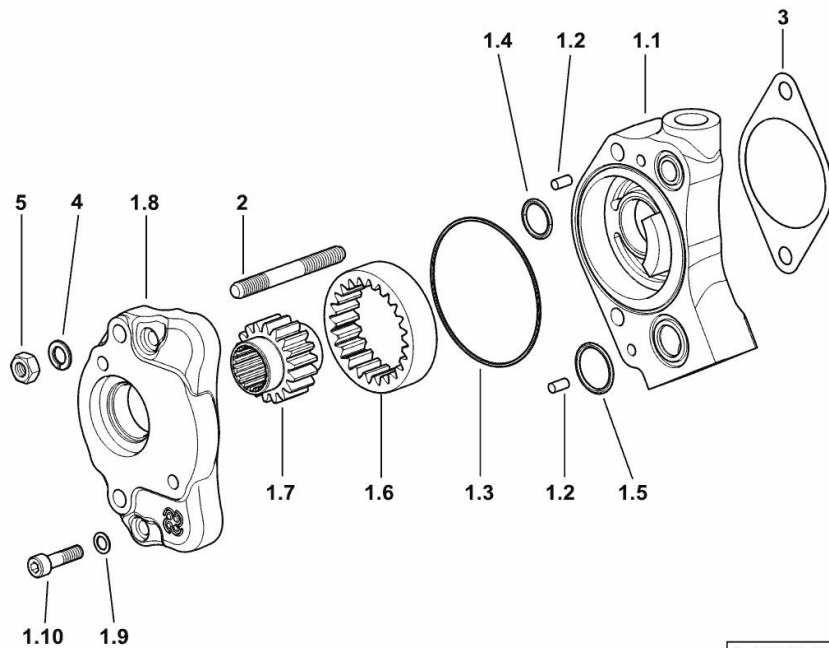
OIL TRANSFER PUMP ASSY.

Fig.	P/n	QTY	Name
------	-----	-----	------

Notes:

[Virtus J 100 -> ZKDY450200TS10001]

1.1	0.015.1087.0/20	1	pump casing
1.2	2.1659.525.0	2	pin
1.3	2.1532.510.0	1	oil seal 88.62x1.78
1.4	2.1531.052.0	1	oil seal 20.29 x 2.62
1.5	2.1531.066.0	1	oil seal 25.07x2.62
1.6	0.015.1093.0/10	1	crown wheel
1.7	0.015.1092.0/10	1	gear
1.8	0.015.1068.0/20	1	flange
1.9	2.1480.014.2	2	washer 8
1.10	2.0312.210.2	2	screw m 8 p 1.25 x 30
2	2.0422.320.7	2	stud bolt m 10 p 1.5 x 15 / m 10 x 75
3	0.255.3953.0/10	1	gasket
4	2.1474.010.2	2	washer 10
5	2.1011.106.2	2	nut m 10 p.1.5



9_H1582_03_0-A-001

<https://www.ebooklibonline.com>

Hello dear friend!

Thank you very much for reading.

Enter the link into your browser.

The full manual is available for immediate download.

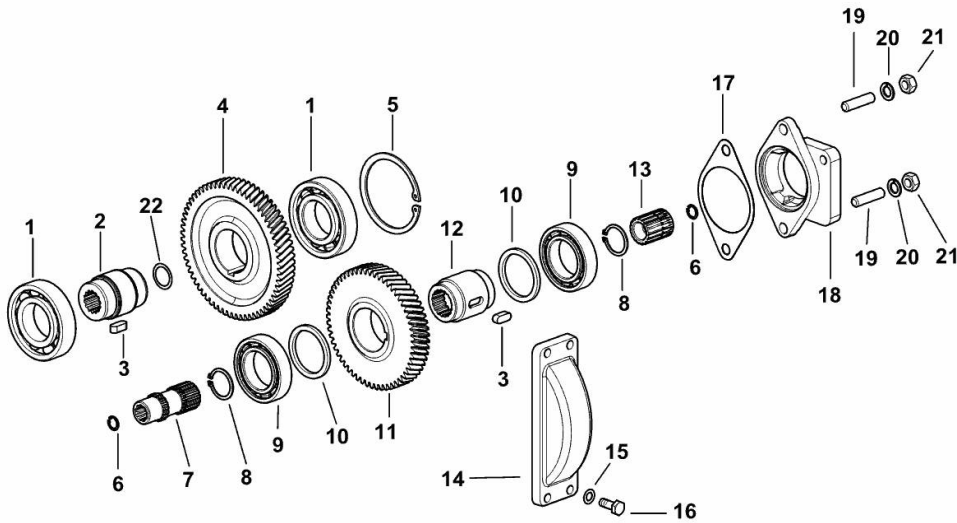
<https://www.ebooklibonline.com>

PUMP DRIVE

Fig.	P/n	QTY	Name
------	-----	-----	------

Notes:

[Virtus J 100 -> ZKDY450200TS10001] 10001 <-



1	2.2041.015.0	2	ball bearing (-> 10001)
2	0.015.9048.0/20	1	sleeve
3	2.1799.036.0	2	stick 8x7x20
4	0.017.5893.0/10	1	gear
5	2.1411.032.1	1	circlip 80
6	2.1411.003.1	2	circlip 14
7	0.015.1096.0/40	1	sleeve
8	2.1410.011.1	2	circlip 28
9	2.2030.009.0	2	ball bearing iso 40 bc 10
10	2.1599.884.0	2	shim 45x55x4
11	0.017.5896.0/10	1	gear
12	0.013.7789.0/10	1	sleeve Z = 17
13	0.008.4464.0/30	1	sleeve Z = 9 / Z = 17
14	0.255.3134.0/10	1	small cover
15	2.1481.007.1	4	washer 8
16	2.0112.207.2	4	screw m 8 p 1.25 x 20
17	0.255.3953.0/10	1	gasket
18	0.255.3942.0/30	1	flange
19	2.0422.305.7	2	stud bolt m 10 p. 1.5 x 25
20	2.1474.010.2	2	washer 10
21	2.1011.106.2	2	nut m 10 p.1.5
22	2.1530.048.0	1	oil seal 18.72x2.62

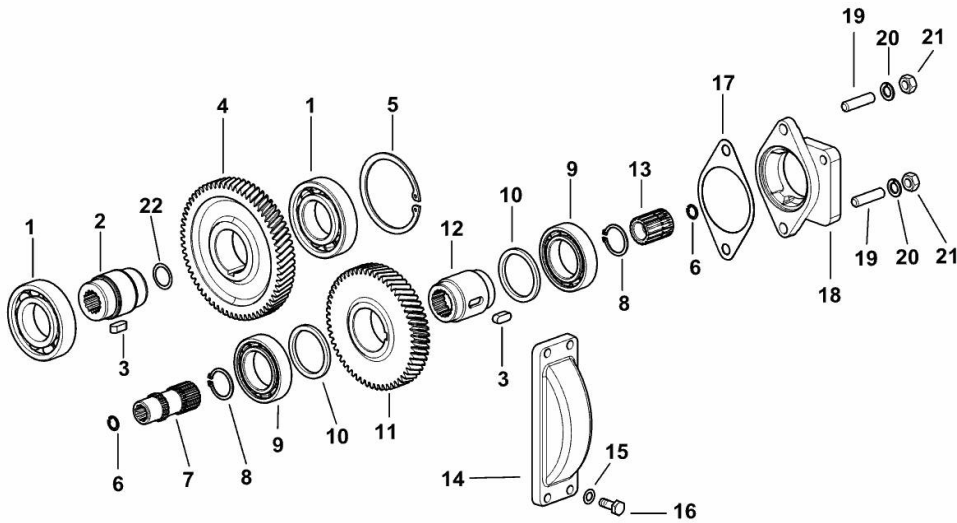
9_R8539_00_0-A-001

PUMP DRIVE

Fig.	P/n	QTY	Name
------	-----	-----	------

Notes:

[Virtus J 100 -> ZKDY450200TS10001] 10001 <-



1	2.2041.015.0	2	ball bearing (-> 10001)
2	0.015.9048.0/20	1	sleeve
3	2.1799.036.0	2	stick 8x7x20
4	0.017.5893.0/10	1	gear
5	2.1411.032.1	1	circlip 80
6	2.1411.003.1	2	circlip 14
7	0.015.1096.0/40	1	sleeve
8	2.1410.011.1	2	circlip 28
9	2.2030.009.0	2	ball bearing iso 40 bc 10
10	2.1599.884.0	2	shim 45x55x4
11	0.017.5896.0/10	1	gear
12	0.013.7789.0/10	1	sleeve Z = 17
13	0.008.4464.0/30	1	sleeve Z = 9 / Z = 17
14	0.255.3134.0/10	1	small cover
15	2.1481.007.1	4	washer 8
16	2.0112.207.2	4	screw m 8 p 1.25 x 20
17	0.255.3953.0/10	1	gasket
18	0.255.3942.0/30	1	flange
19	2.0422.305.7	2	stud bolt m 10 p. 1.5 x 25
20	2.1474.010.2	2	washer 10
21	2.1011.106.2	2	nut m 10 p.1.5
22	2.1530.048.0	1	oil seal 18.72x2.62

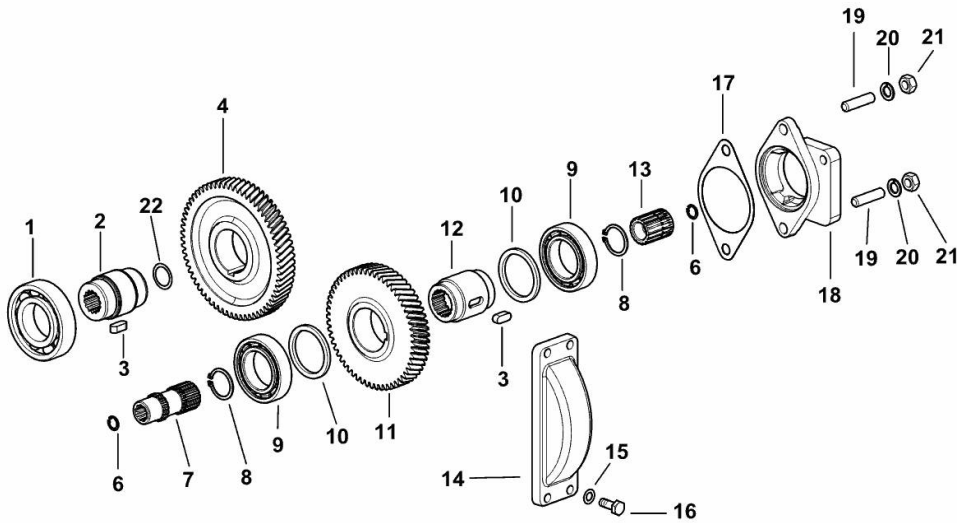
9_R8539_00_0-A-001

PUMP DRIVE

Fig.	P/n	QTY	Name
------	-----	-----	------

Notes:

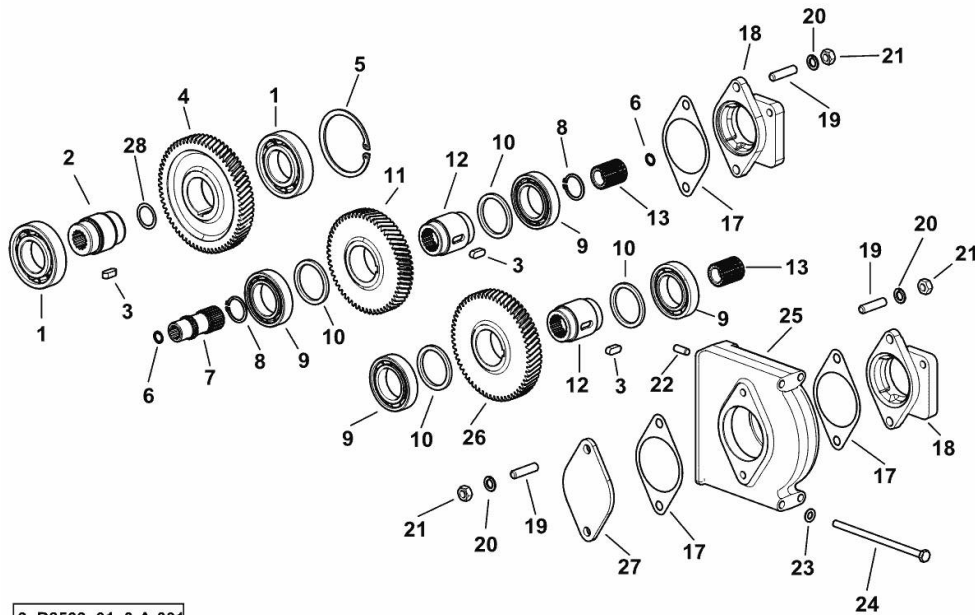
[Virtus J 100 -> ZKDY450200TS10001] -> 10002



1	2.2041.015.0	1	ball bearing
2	0.015.9048.0/20	1	sleeve
3	2.1799.036.0	2	stick 8x7x20
4	0.017.5893.0/10	1	gear
6	2.1411.003.1	2	circlip 14
7	0.015.1096.0/40	1	sleeve
8	2.1410.011.1	2	circlip 28
9	2.2030.009.0	2	ball bearing iso 40 bc 10
10	2.1599.884.0	2	shim 45x55x4
11	0.017.5896.0/10	1	gear
12	0.013.7789.0/10	1	sleeve Z = 17
13	0.008.4464.0/30	1	sleeve Z = 9 / Z = 17
14	0.255.3134.0/10	1	small cover
15	2.1481.007.1	4	washer 8
16	2.0112.207.2	4	screw m 8 p 1.25 x 20
17	0.255.3953.0/10	1	gasket
18	0.255.3942.0/30	1	flange
19	2.0422.305.7	2	stud bolt m 10 p. 1.5 x 25
20	2.1474.010.2	2	washer 10
21	2.1011.106.2	2	nut m 10 p.1.5
22	2.1530.048.0	1	oil seal 18.72x2.62

9_R8539_00_0-A-002

ADDITIONAL PUMP ONTROL FOR AUXILIARY SERVICES



9_R8539_01_0-A-001

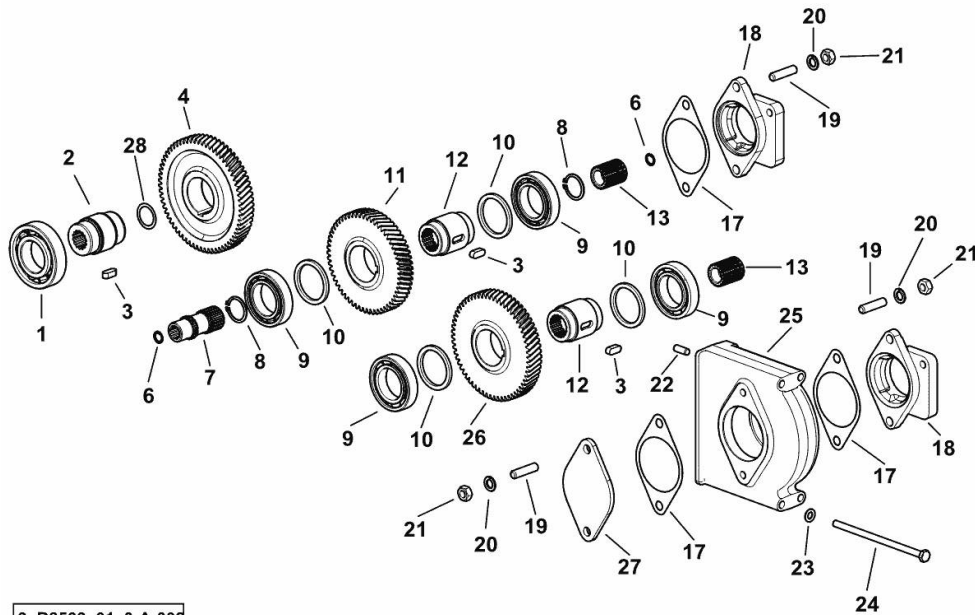
Fig.	P/n	QTY	Name
------	-----	-----	------

Notes:

[Virtus J 100 -> ZKDY450200TS10001]

1	2.2041.015.0	2	ball bearing
2	0.015.9048.0/10	1	sleeve
2	0.015.9048.0/20	1	sleeve
3	2.1799.036.0	3	stick 8x7x20
4	0.017.5893.0/10	1	gear
5	2.1411.032.1	1	circlip 80
6	2.1411.003.1	2	circlip 14
7	0.015.1096.0/40	1	sleeve
8	2.1410.011.1	2	circlip 28
9	2.2030.009.0	4	ball bearing iso 40 bc 10
10	2.1599.884.0	4	shim 45x55x4
11	0.017.5896.0/10	1	gear
12	0.013.7789.0/10	2	sleeve Z = 17
13	0.008.4464.0/30	2	sleeve Z = 9 / Z = 17
17	0.255.3953.0/10	3	gasket
18	0.255.3942.0/30	2	flange
19	2.0422.305.7	6	stud bolt m 10 p. 1.5 x 25
20	2.1474.010.2	6	washer 10
21	2.1011.106.2	6	nut m 10 p.1.5
22	2.1651.709.0	2	pin 8x20
23	2.1475.002.2	4	conical washer 8
24	2.0112.239.2	4	screw m 8 p.1.25 x 150
25	0.016.9821.0/10	1	support
26	0.017.5901.0/10	1	gear
27	0.016.9937.0/10	1	cover
28	2.1530.048.0	1	oil seal 18.72x2.62

ADDITIONAL PUMP ONTROL FOR AUXILIARY SERVICES



9_R8539_01_0-A-002

Fig.	P/n	QTY	Name
------	-----	-----	------

Notes:

[Virtus J 100 -> ZKDY450200TS10001] -> 10011

1	2.2041.015.0	1	ball bearing
2	0.015.9048.0/10	1	sleeve
2	0.015.9048.0/20	1	sleeve
3	2.1799.036.0	3	stick 8x7x20
4	0.017.5893.0/10	1	gear
6	2.1411.003.1	2	circlip 14
7	0.015.1096.0/40	1	sleeve
8	2.1410.011.1	2	circlip 28
9	2.2030.009.0	4	ball bearing iso 40 bc 10
10	2.1599.884.0	4	shim 45x55x4
11	0.017.5896.0/10	1	gear
12	0.013.7789.0/10	2	sleeve Z = 17
13	0.008.4464.0/30	2	sleeve Z = 9 / Z = 17
17	0.255.3953.0/10	3	gasket
18	0.255.3942.0/30	2	flange
19	2.0422.305.7	6	stud bolt m 10 p. 1.5 x 25
20	2.1474.010.2	6	washer 10
21	2.1011.106.2	6	nut m 10 p.1.5
22	2.1651.709.0	2	pin 8x20
23	2.1475.002.2	4	conical washer 8
24	2.0112.239.2	4	screw m 8 p.1.25 x 150
25	0.016.9821.0/10	1	support (10024 <-)
25	0.016.9821.0/20	1	support (-> 10055)
26	0.017.5901.0/10	1	gear
27	0.016.9937.0/10	1	cover
28	2.1530.048.0	1	oil seal 18.72x2.62

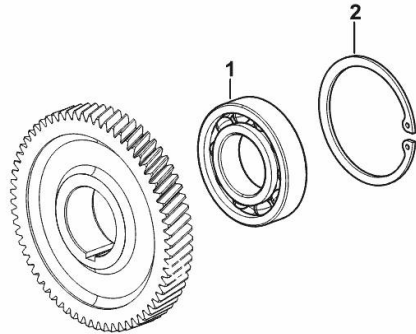
HYDRAULIC PUMP CONTROL

Fig.	P/n	QTY	Name
------	-----	-----	------

Notes:

[Virtus J 100 -> ZKDY450200TS10001] -> 10002 [Virtus J 100 -> ZKDY450200TS10001]

1	2.2041.015.0	1	ball bearing
2	2.1411.032.1	1	circlip 80



9_R8539_02_0-A-001



Suggest:

For more complete manuals. Please go to the home page.

<https://www.ebooklibonline.com>

If the above button click is invalid. Please download this document first, and then click the above link to download the complete manual.

Thank you so much for reading

P.T.O. - 2 SPEED TYPE

9_Y5236_01_0-A-001

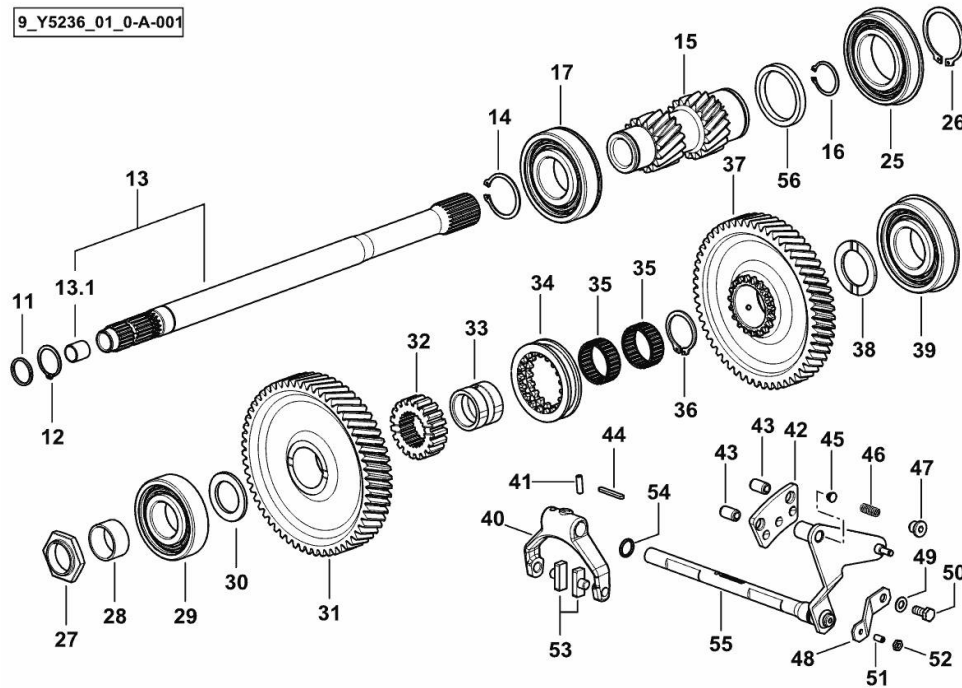


Fig.	P/n	QTY	Name
------	-----	-----	------

Notes:

[Virtus J 100 -> ZKDY450200TS10001]

11	2.1530.062.0	1	oil seal 23.81 x 2.62
12	2.1410.012.7	1	circlip
13	0.020.7506.3	1	shaft
13.1	2.1559.023.0/10	1	special bushing 15.8x19x20
14	2.1410.018.7	1	circlip 45
15	0.021.0838.0	1	gear Z = 16 / 18
16	2.1411.014.1	1	circlip 35
17	2.2063.013.0	1	bearing
25	2.2043.015.0	1	bearing 55 x 100 x 21
26	2.1410.022.1	1	circlip 55
27	0.255.3661.0	1	ring nut m 35x1.5
28	2.1559.228.0	1	special bushing 35 x 40 x 20.5
29	2.2060.012.0	1	ball bearing 40 x 90 x 23
30	2.1599.250.0	1	shoulder ring 35x54x4
31	0.020.7436.0	1	gear Z = 58
32	0.255.3455.0	1	hub Z = 19
33	0.020.7481.0	1	bushing
34	0.255.3438.0/20	1	sleeve Z = 19
35	2.2770.073.0	2	roller cage 40x47x18
36	2.1412.015.7	1	circlip 40x2.5
37	0.021.0830.0	1	gear Z = 55
38	0.255.3450.0	1	shoulder ring 40 x 60 x 3.5
39	2.2062.013.0	1	ball bearing 45x100x25
40	0.007.3487.0	1	fork
41	2.0512.108.7	1	screw m 6 p.1 x 20
42	0.014.8955.0/20	1	small plate
43	2.1630.910.2	2	pin 12 x 20
44	2.1711.011.0	1	stick 5x3x36
45	0.015.1844.0	1	pin
46	2.4019.622.1	1	spring 6.3 x 9.5 x 1.6 x 22.4
47	2.0319.007.2	1	screw m 12 p.1.5
48	0.020.2696.0	1	small plate
49	2.1475.002.2	1	conical washer 8
50	2.0112.206.2	1	screw m 8 p.1.25 x 18
51	2.0532.104.7	1	grub screw m 6 p.1 x 12
52	2.1011.203.2	1	nut m 6 p.1
53	0.255.6463.0	2	shoe
54	2.1530.038.0	1	oil seal 15.54x2.62
55	0.020.7773.2/10	1	lever
56	2.1549.816.0	1	spacer 55x68x8.5

4 SPEED P.T.O.

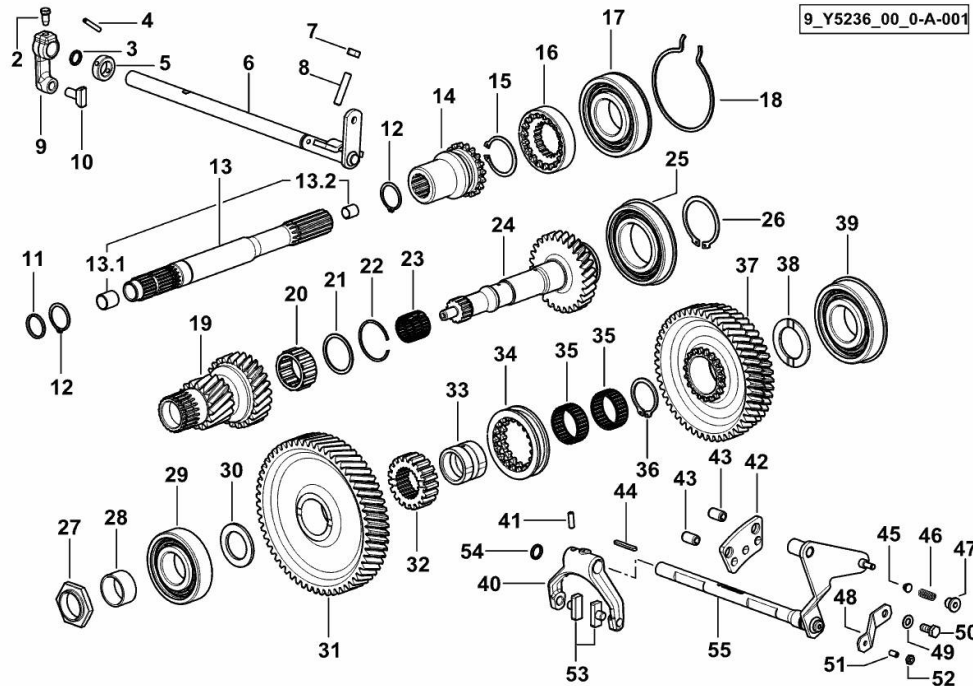


Fig.	P/n	QTY	Name
------	-----	-----	------

Notes:

[Virtus J 100 -> ZKDY450200TS10001]

2	2.0399.019.1	1	screw m 8 p.1 x 16
3	2.1530.033.0	1	oil seal 13.10x2.62
4	2.1631.415.2	1	pin 5x32
5	2.1549.152.2	1	spacer 18.2x30x10
6	0.020.7710.3	1	lever
7	2.1011.105.2	2	nut m 8 p.1.25
8	2.0512.216.2	2	screw m 8 x 40
9	0.007.3492.0	1	small lever
10	0.001.5945.0/10	1	shoe
11	2.1530.062.0	1	oil seal 23.81 x 2.62
12	2.1410.012.7	2	circlip
13	0.020.7505.3	1	shaft
13.1	2.1559.023.0/10	1	special bushing 15.8x19x20
13.2	2.1552.101.0	1	bushing 12 x 14 x 15
14	0.020.7605.0	1	sleeve
15	2.1410.018.7	1	circlip 45
16	0.020.7598.0	1	crown wheel
17	2.2063.013.0	1	bearing
18	2.1499.242.7	1	circlip
19	0.020.7423.0	1	gear Z = 16 / 25
20	2.2770.227.0	1	roller cage
21	2.1549.803.0	1	spacer 49.8x42x2
22	2.1423.038.7	1	circlip 50
23	2.2999.298.0	1	roller cage 28 x 33 x 27
24	0.020.7433.0	1	shaft Z = 28
25	2.2043.015.0	1	bearing 55 x 100 x 21
26	2.1410.022.1	1	circlip 55
27	0.255.3661.0	1	ring nut m 35x1.5
28	2.1559.228.0	1	special bushing 35 x 40 x 20.5
29	2.2060.012.0	1	ball bearing 40 x 90 x 23
30	2.1599.250.0	1	shoulder ring 35x54x4
31	0.020.7436.0	1	gear Z = 58
32	0.255.3455.0	1	hub Z = 19
33	0.020.7481.0	1	bushing
34	0.255.3438.0/20	1	sleeve Z = 19
35	2.2770.073.0	2	roller cage 40x47x18
36	2.1412.015.7	1	circlip 40x2.5
37	0.020.7446.0	1	gear Z = 46 / 49
38	0.255.3450.0	1	shoulder ring 40 x 60 x 3.5
39	2.2062.013.0	1	ball bearing 45x100x25
40	0.007.3487.0	1	fork

<https://www.ebooklibonline.com>

Hello dear friend!

Thank you very much for reading.

Enter the link into your browser.

The full manual is available for immediate download.

<https://www.ebooklibonline.com>