

Section: ENGINE  
**CYLINDER BLOCK 3338 <--**

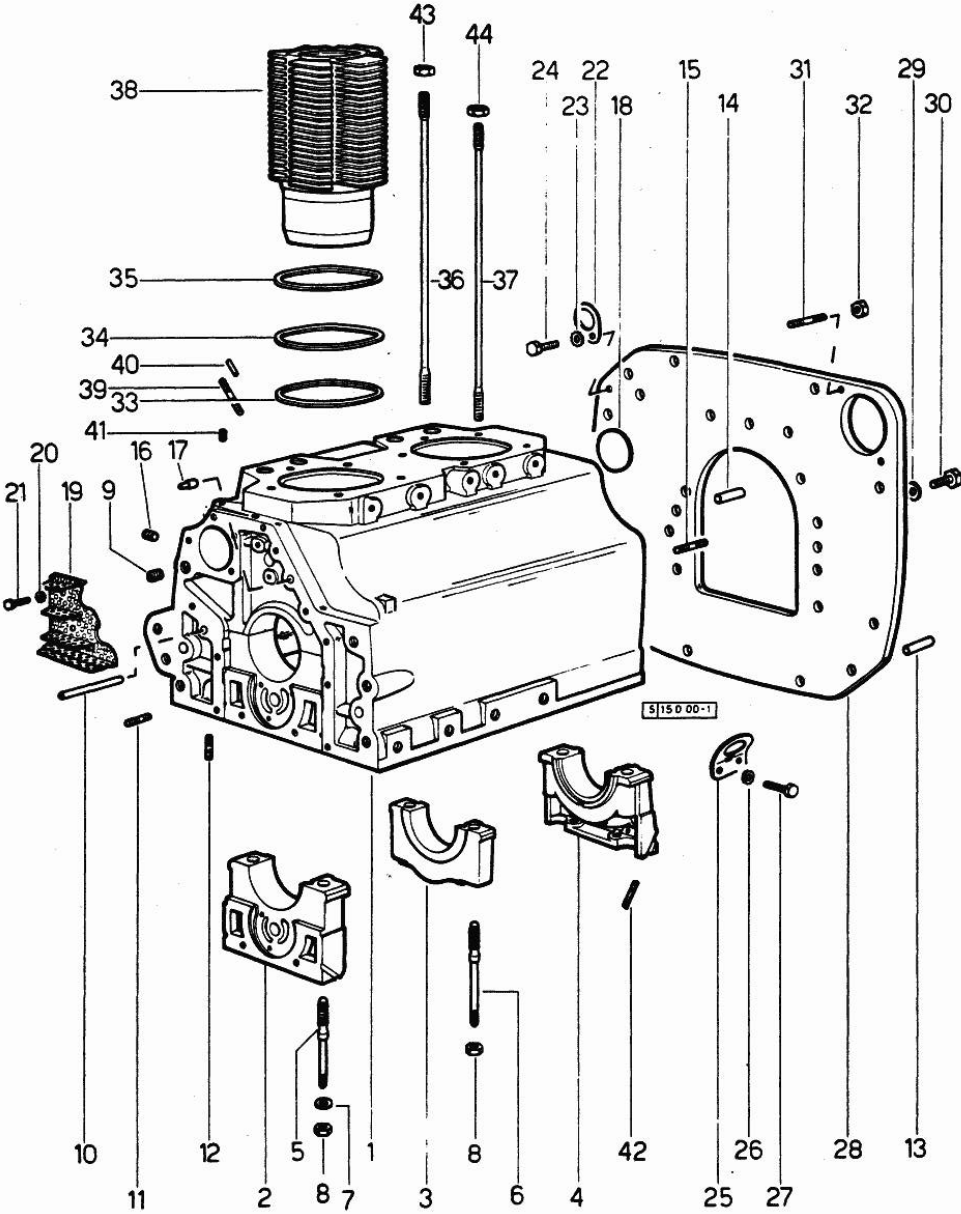


Fig.	P/n	QTY	Name
<b>Notes:</b>			
[SIRENETTA]			
0	0.027.0050.6	1	gasket set FOR ENGINE ASSEMBLY
1	0.027.1151.4/10	1	old part number
2	0.029.1112.0	1	support
3	0.029.1113.0	1	support
4	0.029.1116.0	1	support
5	0.021.1157.0	4	stud bolt
6	0.029.1117.0	2	stud bolt
7	2.1599.144.0	6	shoulder
8	2.1019.026.1	6	special nut m 12 p.1.5
9	2.3130.002.1	2	plug 1/4" gas
10	2.1699.116.0	1	pin
11	2.0432.018.1	6	stud bolt m 8 p.1.25 / p.1 x 65
12	2.0432.001.1	18	stud bolt m 14 p.2-1.5x35
13	2.1652.911.0	2	cylindrical plug 12x25
14	2.1653.708.0	3	pin 8x18
15	2.0432.155.1	9	stud bolt m 10 p.1.5 / p. 1.25 x 25
16	2.3139.001.0	2	plug m 12 p.1.75
17	2.1699.021.0	1	pin 7.8x8x20
18	2.3170.022.1	1	expansion plug 60
19	0.029.1155.2	1	filter
20	002.5937.3/30	2	rocker arm
20	2.1470.002.2	2	lock washer 6
21	2.0112.003.2	1	screw m 6 p.1 x 12
22	0.002.5936.3/40	1	rocker arm
22	0.002.5952.0	1	old part number
23	2.1470.006.2	1	lock washer 10
24	2.0112.309.2	1	screw m 10 p.1.5 x 25
25	0.027.1157.0/10	1	old part number
26	2.1470.006.2	1	lock washer 10
27	2.0112.207.2	1	screw m 8 p 1.25 x 20
28	0.027.1130.0/20	1	flange
29	2.1470.008.2	11	lock washer 14
30	2.0112.511.1	11	screw m 14 p.2 x 30
31	2.0439.033.1	2	stud bolt m 10x28
32	2.1011.106.2	2	nut m 10 p.1.5
33	2.1589.034.0	2	shoulder ring
34	2.1589.033.0	2	shoulder ring
35	2.1569.053.0	2	gasket
36	0.029.1123.0	8	stud bolt m 12 p.1.5x265
37	0.029.1122.0	2	stud bolt

Section: ENGINE  
CYLINDER BLOCK 3338 <--

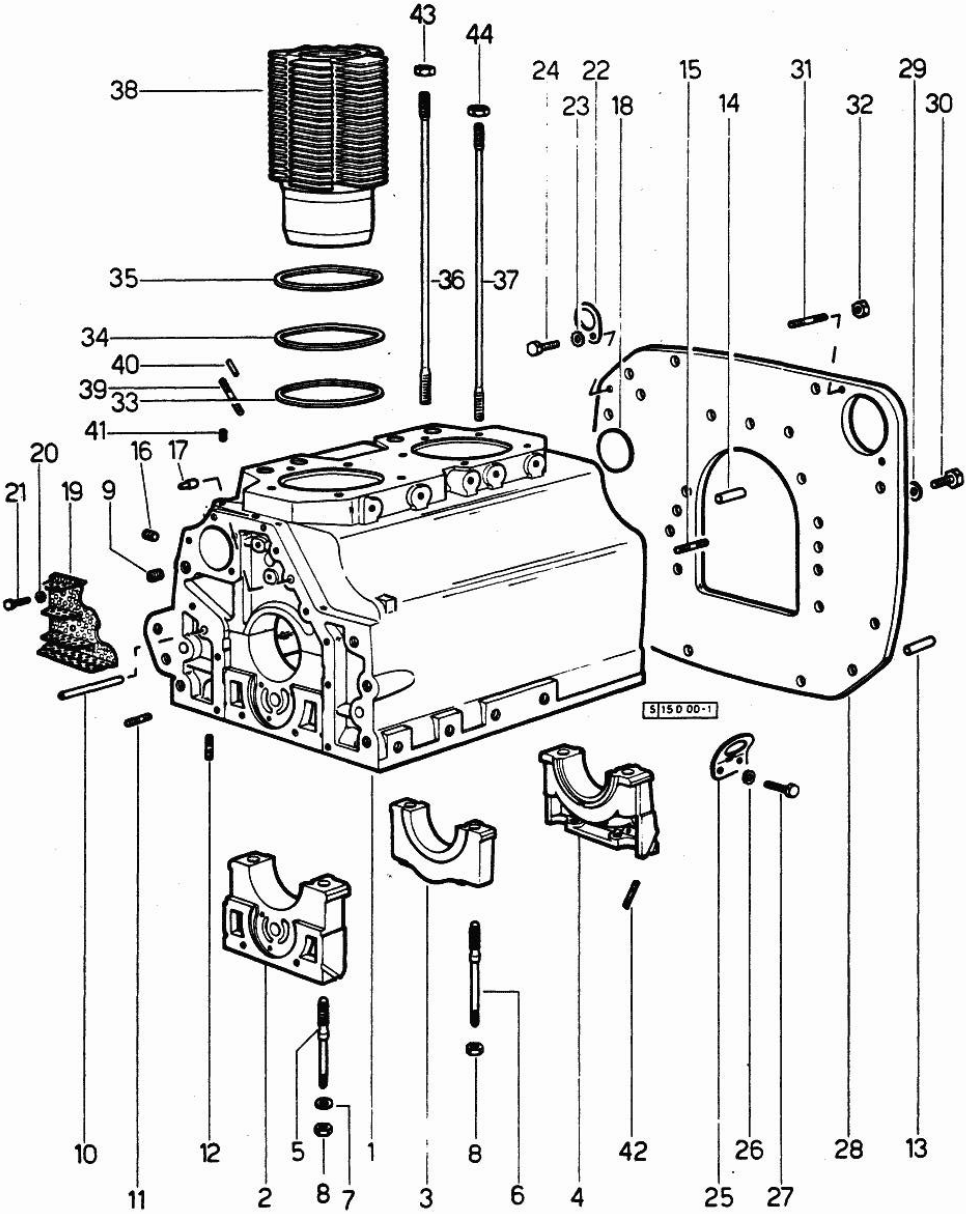


Fig.	P/n	QTY	Name
38	0.029.1120.0	2	engine cylinder
39	2.0432.159.1	2	stud bolt m 10 x 35
40	2.1653.708.0	1	pin 8x18
41	2.3139.001.1	1	plug
42	0.029.1154.0	4	gasket
43	2.1019.025.1	8	special nut
44	2.1099.028.1	2	special nut

Section: ENGINE

## CYLINDER BLOCK -&gt; 3339

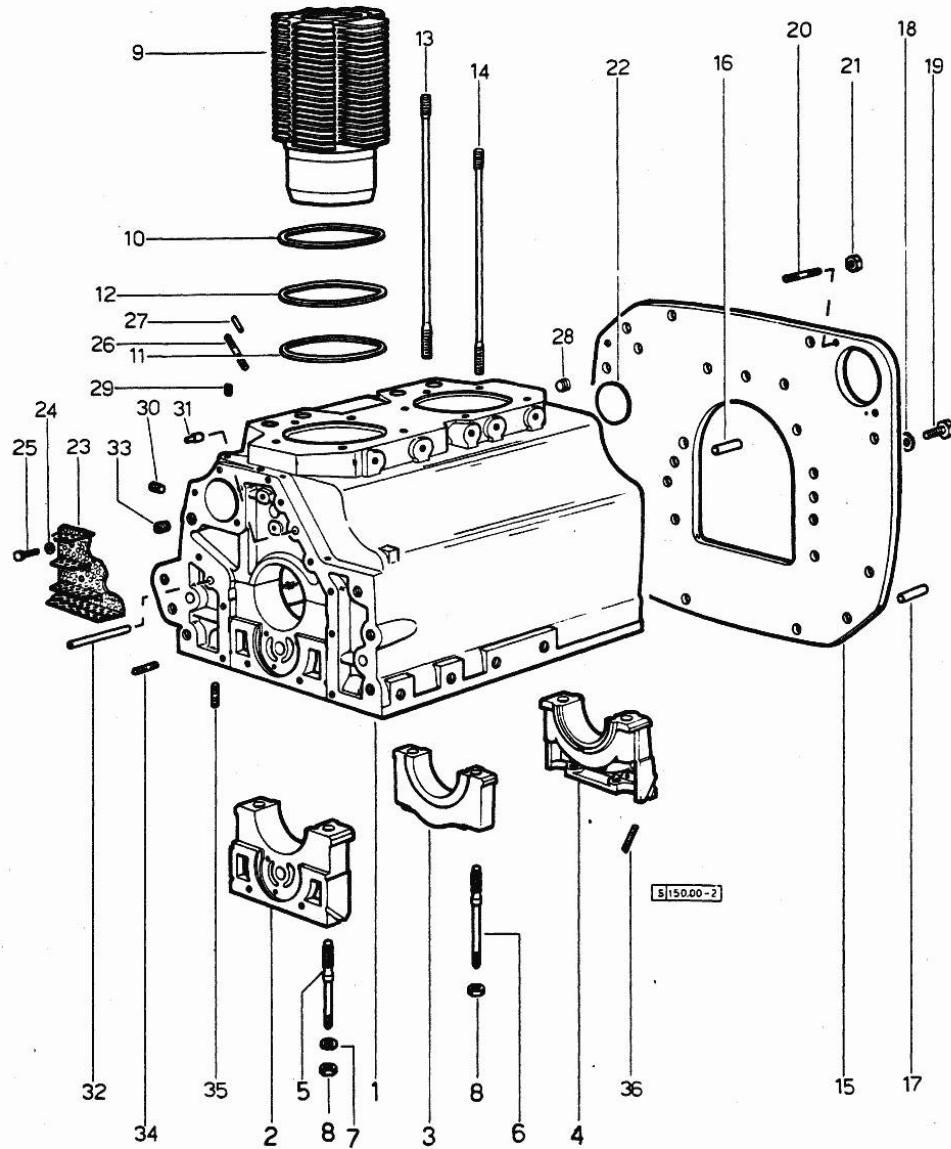


Fig.	P/n	QTY	Name
<b>Notes:</b>			
[SIRENETTA]			
0	0.034.0050.6/10	1	gasket set FOR ENGINE ASSEMBLY
1	0.034.1110.4/30	1	crankcase
2	0.029.1112.0	1	support
3	0.029.1113.0	1	support
4	0.029.1116.0	1	support
5	0.021.1157.0	4	stud bolt
6	0.029.1117.0	2	stud bolt
7	2.1599.144.0	6	shoulder
8	2.1019.026.1	6	special nut m 12 p.1.5
9	0.034.1120.0/10	2	engine cylinder
9	0.036.1120.0	2	cylinder 3518 <= - => 3542 - 3631 <= => 3519 - 3541 <= - => 3632
10	2.1589.036.0	2	shim
11	2.1569.055.0	2	shim
12	2.1589.037.0	2	shim
13	0.029.1123.0	8	stud bolt m 12 p.1.5x265 3518 <=
13	0.039.1122.0	8	stud bolt m 12 p.1.5x310 => 3519
14	0.034.1122.0	2	stud bolt 3518 <=
14	0.037.1122.0	2	stud bolt => 3519
15	0.027.1130.0/20	1	flange
16	2.1653.708.0	2	pin 8x18
17	2.1652.911.0	2	cylindrical plug 12x25
18	2.1470.008.2	11	lock washer 14
19	2.0112.511.1	11	screw m 14 p.2 x 30
20	2.0439.033.1	2	stud bolt m 10x28
21	2.1011.106.2	2	nut m 10 p.1.5
22	2.3170.022.1	1	expansion plug 60
23	0.029.1155.2/10	1	plate
24	2.1470.002.2	2	lock washer 6
25	2.0112.003.2	2	screw m 6 p.1 x 12
26	2.0432.159.1	2	stud bolt m 10 x 35
27	2.1653.708.0	2	pin 8x18
28	2.3130.002.1	2	plug 1/4" gas
29	2.3130.001.1	2	plug 1/8" gas
30	2.3139.001.0	2	plug m 12 p.1.75

**<https://www.ebooklibonline.com>**

Hello dear friend!

Thank you very much for reading.

Enter the link into your browser.

The full manual is available for immediate download.

**<https://www.ebooklibonline.com>**

CYLINDER BLOCK -> 3339

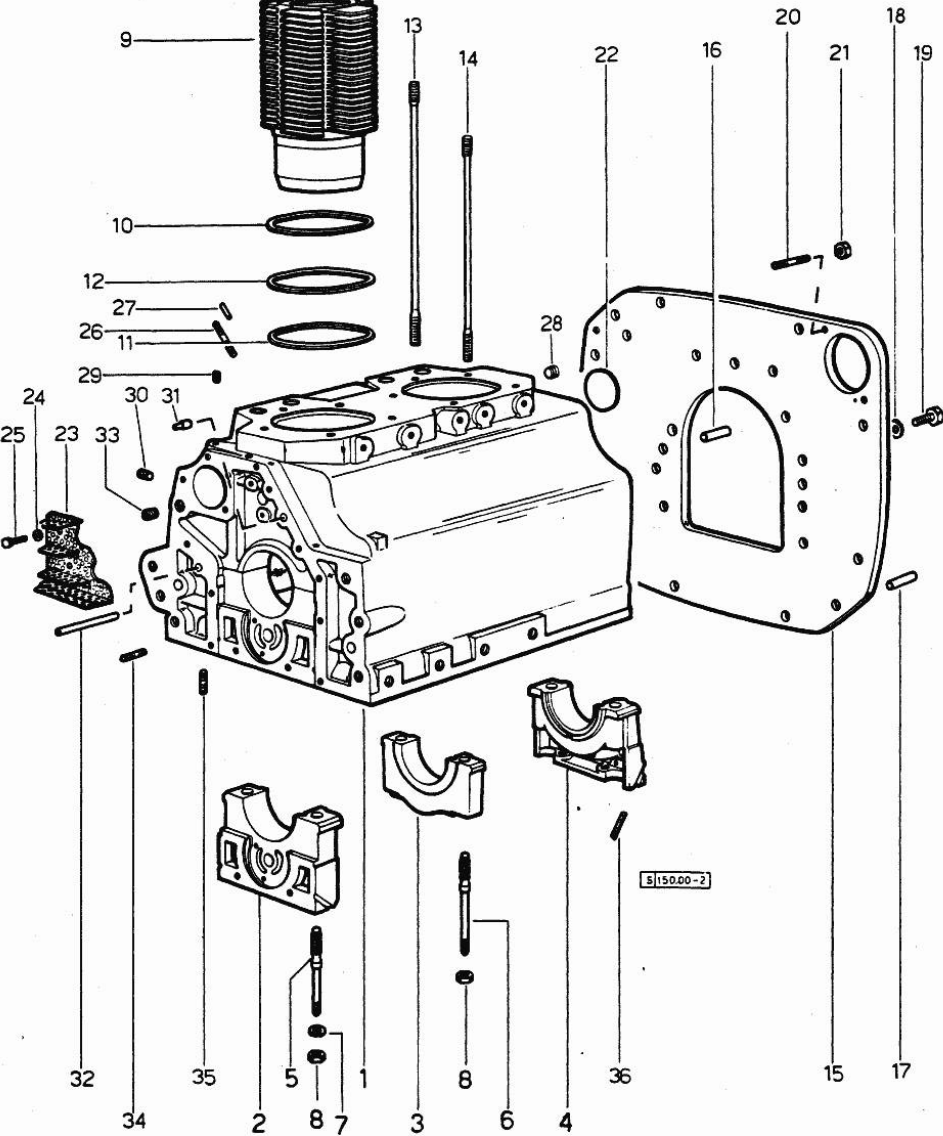


Fig.	P/n	QTY	Name
31	2.1699.021.0	1	pin 7.8x8x20
32	2.1699.116.0	1	pin
33	2.3130.002.1	2	plug 1/4" gas
34	2.0432.018.1	5	stud bolt m 8 p.1.25 / p.1 x 65
35	2.0432.003.1	18	stud bolt m 8 p.1.25 / p.1 x 20
36	0.029.1154.0	4	gasket

Section: ENGINE  
TIMING CASE

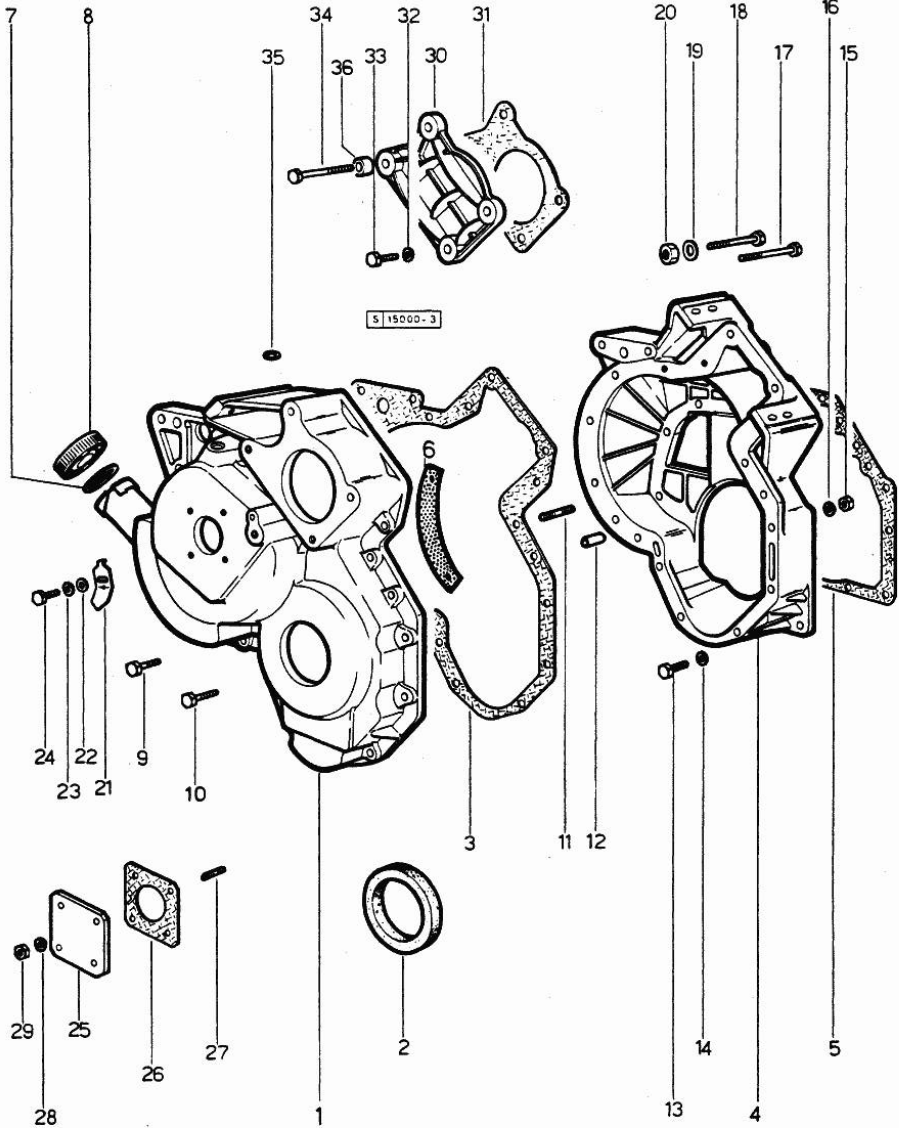


Fig.	P/n	QTY	Name
------	-----	-----	------

Notes:  
[SIRENETTA]

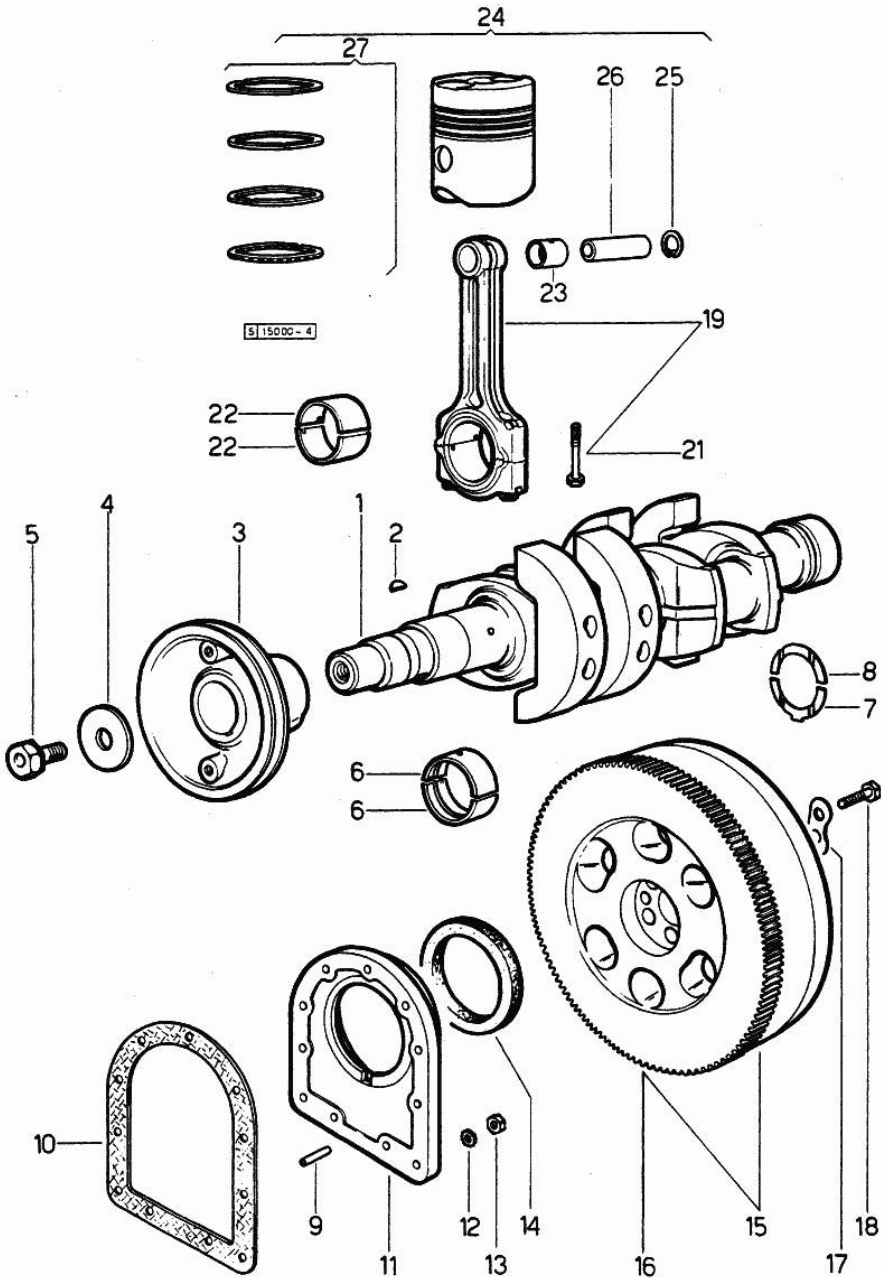
1	0.027.1155.0/30	1	governor housing
2	2.1519.010.0	1	special oil seal 58x80x10
3	0.027.1156.0	1	gasket
4	0.027.1154.0/30	1	flange
5	0.029.1153.0/10	1	gasket
6	0.027.1152.0/20	1	small plate
7	2.1569.048.0	1	gasket
8	0.022.1135.3	1	plug
9	2.0122.222.2	1	screw
10	2.0122.213.2	4	screw m 8 p.1x35
11	2.0432.005.1	3	stud bolt m 8 p.1.25 / p.1 x 25
12	2.1652.711.0	1	cylindrical plug 8x25
13	2.0112.207.1	8	screw m 8 p 1.25 x 20
14	2.1480.014.1	8	washer 8
15	2.1011.405.2	15	nut m 8 p.1
16	2.1480.014.1	15	washer 8
17	2.0122.225.2	1	screw m 8 p.1x80
18	2.0122.224.1	1	screw
19	2.1480.014.1	2	washer 8
20	2.1011.405.2	2	nut m 8 p.1
21	0.027.1150.0/10	1	index
22	2.1310.003.2	1	flat washer 7.4x14
23	2.1470.004.2	1	lock washer 8
24	2.0112.103.1	1	screw m 7 p.1.x12
24	2.0112.204.2	1	screw m 8 p.1.25x14
25	0.027.1153.0	1	flange
26	0.026.1150.0	1	gasket
27	2.0439.055.1	4	stud bolt m 6 p.1 x 18
28	2.1480.012.1	4	washer 6, d128
29	2.1011.103.1	4	nut
30	0.029.1163.0	1	small cover
31	0.054.1155.0	1	gasket
32	2.1480.014.1	2	washer 8
33	2.0112.211.2	2	screw m 8 p.1.25 x 30
34	2.0122.233.2	2	screw
35	2.1530.028.0	1	oil seal 11.91 x 2.62
36	2.1579.191.0	2	spacer 8.5 x 18 x 20

Section: ENGINE  
**CRANKSHAFT 3338 <--**

Fig.	P/n	QTY	Name
------	-----	-----	------

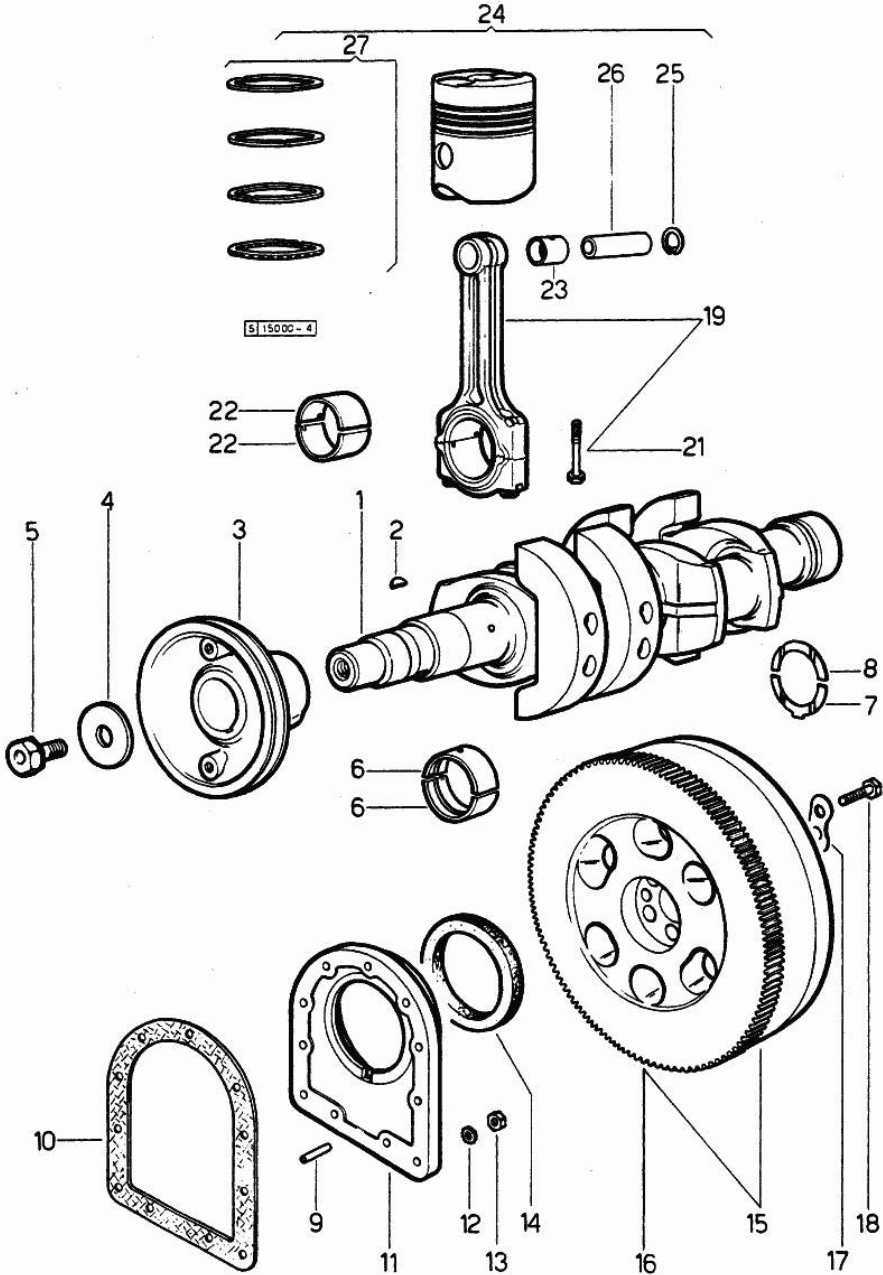
Notes:  
[SIRENETTA]

1	0.027.1210.4/20	1	crankshaft
2	2.1799.002.0	1	stick 10x13
3	0.027.1244.0/20	1	old part number
4	0.001.6020.0	1	shoulder
5	2.0129.032.2	1	screw m 24 p.2x45
6	0.029.0066.0		main half bushing - mm 1.00
6	0.029.1215.0/10	6	main half bushing
6	0.029.1215.7		main half bushing - mm 0.25
6	0.029.1215.8		main half bushing - mm 0.50
6	0.029.1215.9		main half bushing - mm 0.75
7	0.001.4196.0	2	shoulder ring
7	0.001.4547.0		shoulder ring + mm 0.05
7	0.001.4548.0		shoulder ring + mm 0.10
7	0.001.4549.0		shoulder ring + mm 0.15
8	0.001.4197.0	2	shoulder ring
8	0.001.4544.0		shoulder ring + mm 0.05
8	0.001.4545.0		shoulder ring + mm 0.10
8	0.001.4546.0		shoulder ring + mm 0.15
9	2.1652.915.0	2	cylindrical plug 12x35
10	0.029.1250.0	1	gasket
11	0.029.1240.0	1	flange
12	2.1480.015.1	9	washer 10
13	2.1011.421.2	9	nut m 10 p.1.25
14	2.1519.009.0	1	special oil seal
15	0.027.1241.3	1	flywheel
16	0.029.1242.0	1	crown wheel Z = 120, mm 20
17	2.1379.006.0	3	lock-tab 15x15x36,5
18	2.0122.515.7	6	screw
19	0.029.1220.3	2	engine connecting rod
21	0.002.3910.0	4	screw
22	0.021.0068.0		con.rod half bushing
22	0.021.1225.0	4	con.rod half bushing STANDARD
22	0.021.1225.7		con.rod half bushing - mm 0.25
22	0.021.1225.8		con.rod half bushing - mm 0.50
22	0.021.1225.9		con.rod half bushing - mm 0.75
23	0.002.4168.0	2	bearing
24	0.029.0060.6	2	complete piston STANDARD
24	0.029.0061.6		complete piston + mm 0.5
24	0.029.0062.6		complete piston + mm 1.0
25	2.1411.014.1	4	circlip 35
26	0.002.4167.0	2	piston pin



Section: ENGINE  
CRANKSHAFT 3338 <--

Fig.	P/n	QTY	Name
27	0.029.0052.6	2	piston ring set
27	0.029.0053.6		piston ring set + mm 0.5
27	0.029.0054.6		piston ring set + mm 1.0



Section: ENGINE  
CRANKSHAFT --> 3339

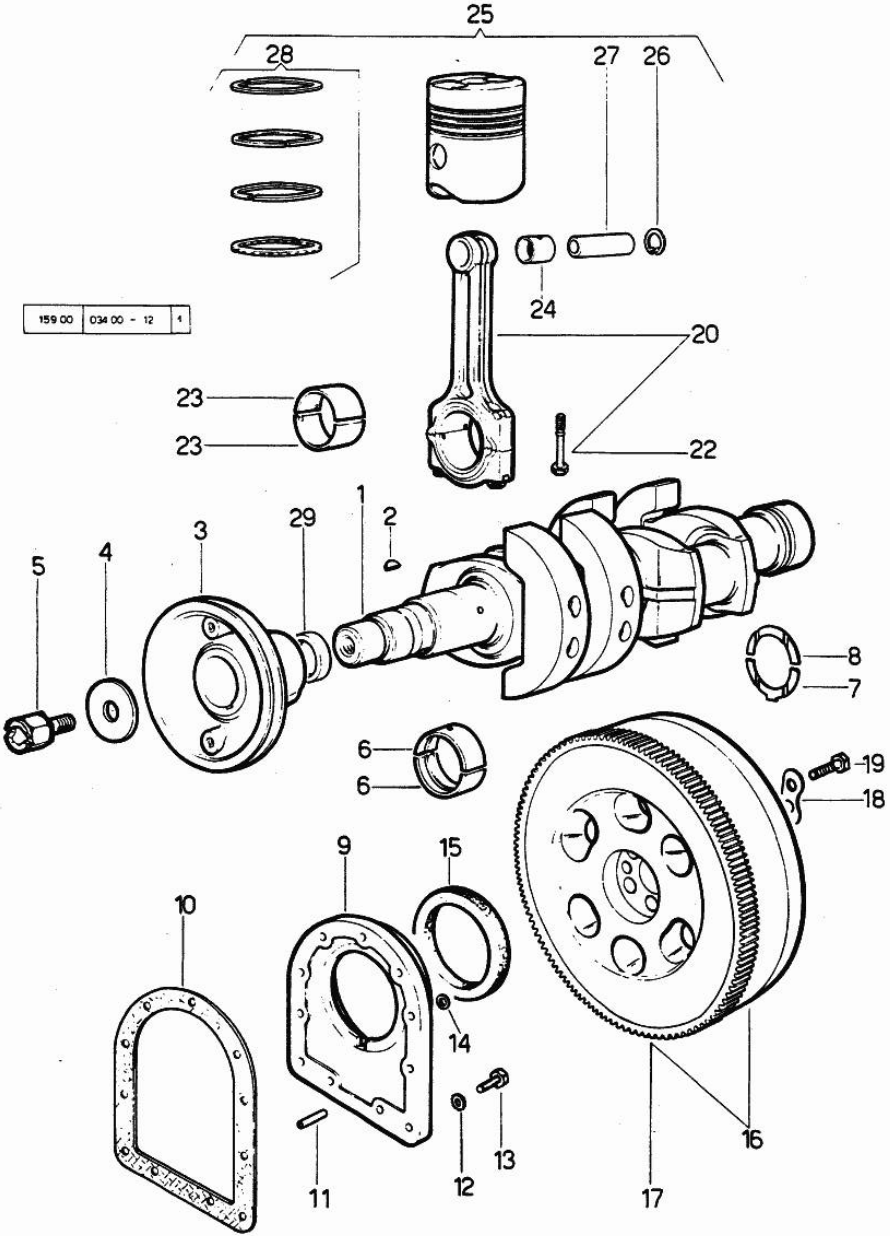
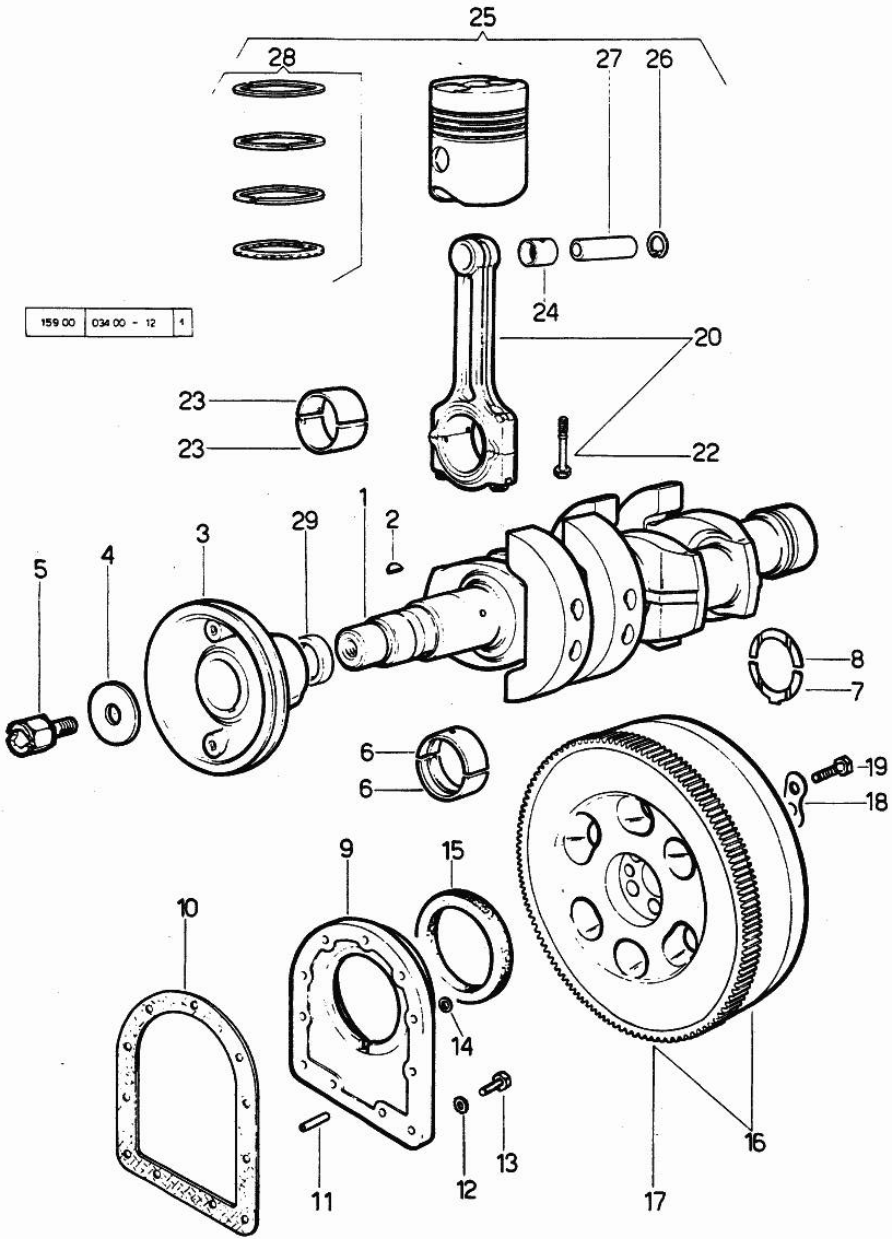


Fig.	P/n	QTY	Name
<b>Notes:</b> [SIRENETTA]			
1	0.027.1210.4/30	1	crankshaft => 3819
1	0.027.1210.6	1	crankshaft 3818 <=
2	2.1799.002.0	1	stick 10x13
3	0.027.1244.0/20	1	old part number
4	0.001.6020.0	1	shoulder
5	2.0129.032.2	1	screw m 24 p.2x45
6	0.029.0066.0		main half bushing - mm 1.00
6	0.029.1215.0	6	main half bushing
6	0.029.1215.7		main half bushing - mm 0.25
6	0.029.1215.8		main half bushing - mm 0.50
6	0.029.1215.9		main half bushing - mm 0.75
7	0.001.4196.0	2	shoulder ring
7	0.001.4547.0		shoulder ring + mm 0.05
7	0.001.4548.0		shoulder ring + mm 0.10
7	0.001.4549.0		shoulder ring + mm 0.15
8	0.001.4197.0	2	shoulder ring
8	0.001.4544.0		shoulder ring + mm 0.05
8	0.001.4545.0		shoulder ring + mm 0.10
8	0.001.4546.0		shoulder ring + mm 0.15
9	0.029.1240.0	1	flange
10	0.029.1250.0	1	gasket
11	2.1652.915.0	2	cylindrical plug 12x35
12	2.1480.015.1	6	washer 10
13	2.0112.309.2	9	screw m 10 p.1.5 x 25
14	2.1560.006.0	3	gasket 10.2 x 16
15	2.1519.009.0	1	special oil seal
16	0.027.1241.3	1	flywheel
17	0.029.1242.0	1	crown wheel Z = 120, mm 20
17	0.038.1242.0	1	crown wheel Z = 120, mm 15
18	2.1379.006.0	3	lock-tab 15x15x36,5
19	2.0122.515.7	6	screw
20	0.029.1220.3	2	engine connecting rod 3818 <=
20	0.039.1220.3/10	2	engine connecting rod => 3819
22	0.002.3910.0	4	screw 3818 <=
22	0.039.1250.0	4	screw m 14 p.1.5x63 => 3819

Section: ENGINE  
CRANKSHAFT --> 3339

Fig.	P/n	QTY	Name
23	0.021.0068.0		con.rod half bushing
23	0.021.1225.0	4	con.rod half bushing STANDARD 3818 <=
23	0.021.1225.7		con.rod half bushing - mm 0.25
23	0.021.1225.8		con.rod half bushing - mm 0.50
23	0.021.1225.9		con.rod half bushing - mm 0.75
23	0.039.0068.0		con.rod half bushing - mm 1.016
23	0.039.1225.0	4	con.rod half bushing
23	0.039.1225.7		con.rod half bushing -mm 0.254
23	0.039.1225.8		con.rod half bushing -mm 0.508
23	0.039.1225.9		con.rod half bushing -mm 0.762
24	0.002.4168.0	2	bearing
25	0.036.0060.6	2	complete piston
25	0.036.0061.6		complete piston + mm 0.5
25	0.036.0062.6		complete piston + mm 1.00
26	2.1411.014.1	4	circlip 35
27	0.002.4167.0	2	piston pin
28	0.034.0052.6	2	piston ring set
28	0.034.0053.6		piston ring set + mm 0.5
28	0.034.0054.6		piston ring set + mm 1.0
29	0.034.1256.0	1	spacer => 3819





**Suggest:**

**For more complete manuals. Please go to the home page.**

**<https://www.ebooklibonline.com>**

**If the above button click is invalid. Please download this document first, and then click the above link to download the complete manual.**

**Thank you so much for reading**

Section: ENGINE  
CAMSHAFT

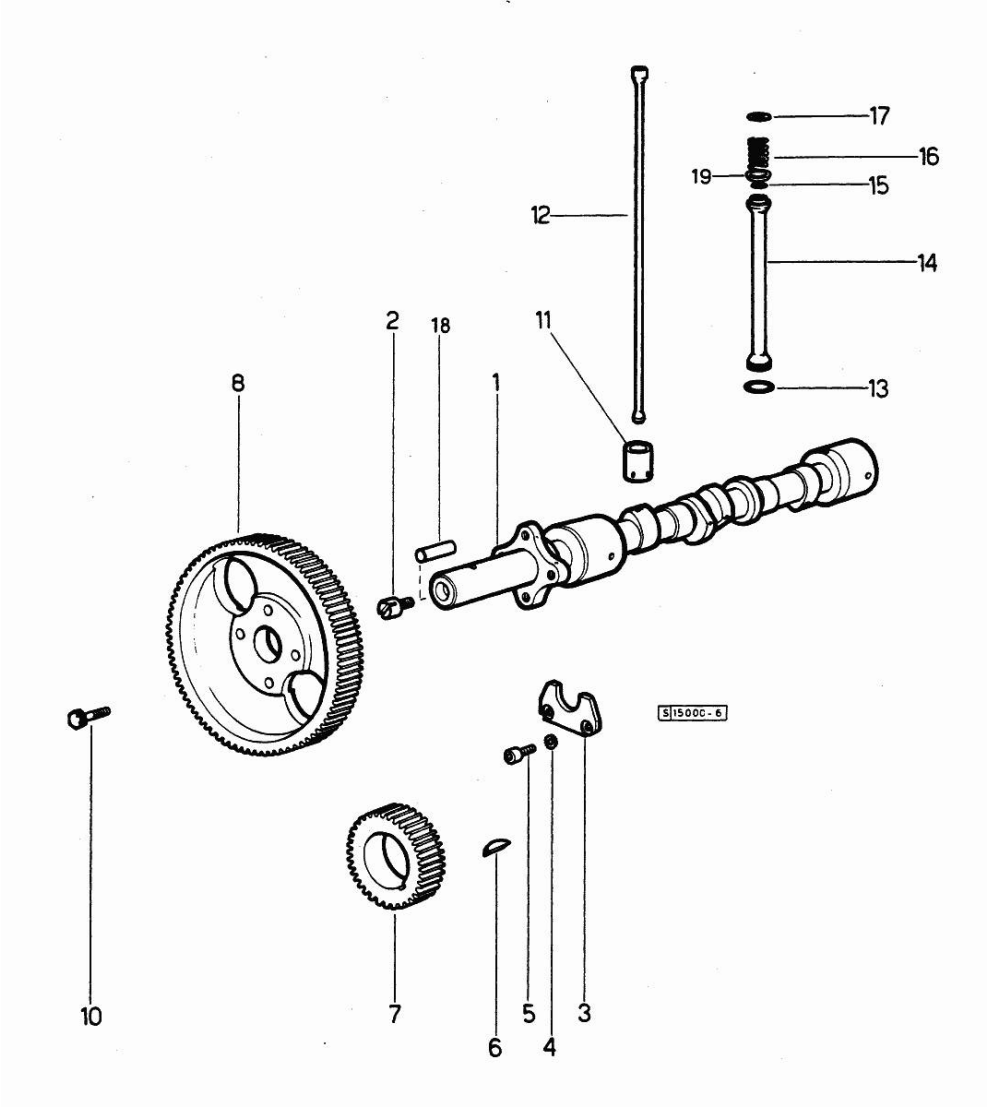


Fig.	P/n	QTY	Name
------	-----	-----	------

Notes:  
[SIRENETTA]

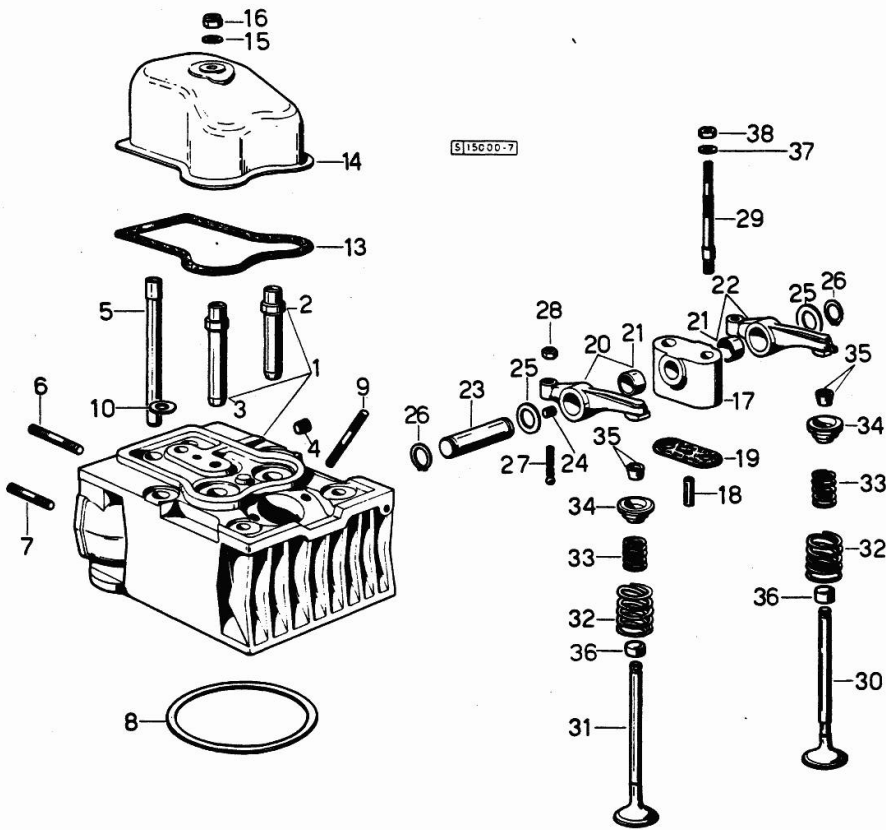
1	0.027.1351.0/10	1	camshaft
2	0.027.1350.0/20	1	pin
3	0.027.1314.0	1	flange
4	2.1470.004.2	2	lock washer 8
5	2.0312.206.2	2	screw m 8 p 1.25 x 20
6	2.1720.010.0	1	key 5x9
7	0.029.1320.0	1	gear Z = 45
8	0.035.1321.0	1	gear
10	2.0139.006.1	4	screw
11	0.002.3909.0	4	tappets
12	0.002.4180.0	4	rod
12	0.037.1331.0	4	rod 3338 <= => 3339
13	2.1539.018.0	4	special oil seal
14	0.029.1332.0	4	sleeve 3338 <= => 3339 - 3518 <= => 3519
14	0.034.1332.6	4	sleeve
14	0.039.1332.0/10	4	sleeve
15	2.1539.022.0	4	special oil seal 12.37x2.62
16	2.4019.090.1	4	spring 25x34x2.5
17	2.1569.037.0	4	gasket
18	2.1650.513.0	1	pin 6 x 30
19	0.039.1350.0	4	ring 12832 <=

Section: ENGINE  
CYLINDER HEAD 3338 <--

Fig.	P/n	QTY	Name
------	-----	-----	------

Notes:  
[SIRENETTA]

0	0.029.0057.6	1	gasket set FOR 1 CYLINDER VALVE GRINDING AND PISTON RING RENEWAL
1	0.029.1410.3	2	engine head
2	0.029.1417.0	2	valve guide
3	0.037.1417.0/10	2	valve guide
4	2.3130.001.1	2	plug 1/8" gas
5	0.029.1418.0	4	sleeve
6	2.0432.007.1	2	stud bolt m 8 p.1.25 / p.1 x 30
6	2.0432.022.1	1	stud bolt m 8 p 1.25-1x85
6	2.0432.025.1	1	stud bolt m 8 p 1.25-1x100
7	2.0432.003.1	4	stud bolt m 8 p.1.25 / p.1 x 20
8	2.1589.035.0	2	shoulder ring
9	2.0439.087.1	4	stud bolt
10	2.1599.144.0	10	shoulder
13	0.029.1450.0	2	gasket
14	0.029.1440.2	2	cap
15	2.1560.004.0	2	copper gasket 8.2 x 14
16	2.1099.056.1	2	special nut m8 p.1
17	0.029.1430.0	2	old part number
18	0.029.1452.0	2	tube
19	0.029.1451.0/10	2	gasket
20	0.002.5937.3/30	2	rocker arm
21	2.1559.021.0/40	4	bushing 15x19x22
22	0.002.5936.3/40	2	rocker arm
23	0.029.1431.0	2	pin
24	2.0512.102.1	4	screw m 6 p.1 x 8
25	2.1599.019.0	4	shoulder ring 19.5x31x2
26	2.1410.055.1	4	circlip 19
27	0.021.1434.0	4	screw
28	2.1019.039.1	4	old part number
29	0.029.1453.0/10	2	stud bolt
30	0.029.1421.0/10	2	exhaust valve Ø mm 9
31	0.029.1420.0/10	2	inlet valve Ø mm 9
32	2.4019.193.0	4	spring 36.15x55.2x3.2
33	2.4019.194.0	4	spring 22.70x50.7x2.1
34	0.002.9215.0	4	cup
36	0.021.1453.0/20	8	small cover
37	2.1310.006.2	4	flat washer 10.5x21
38	2.1011.421.2	2	nut m 10 p.1.25



**<https://www.ebooklibonline.com>**

Hello dear friend!

Thank you very much for reading.

Enter the link into your browser.

The full manual is available for immediate download.

**<https://www.ebooklibonline.com>**