

Section: ENGINE
CRANKCASE

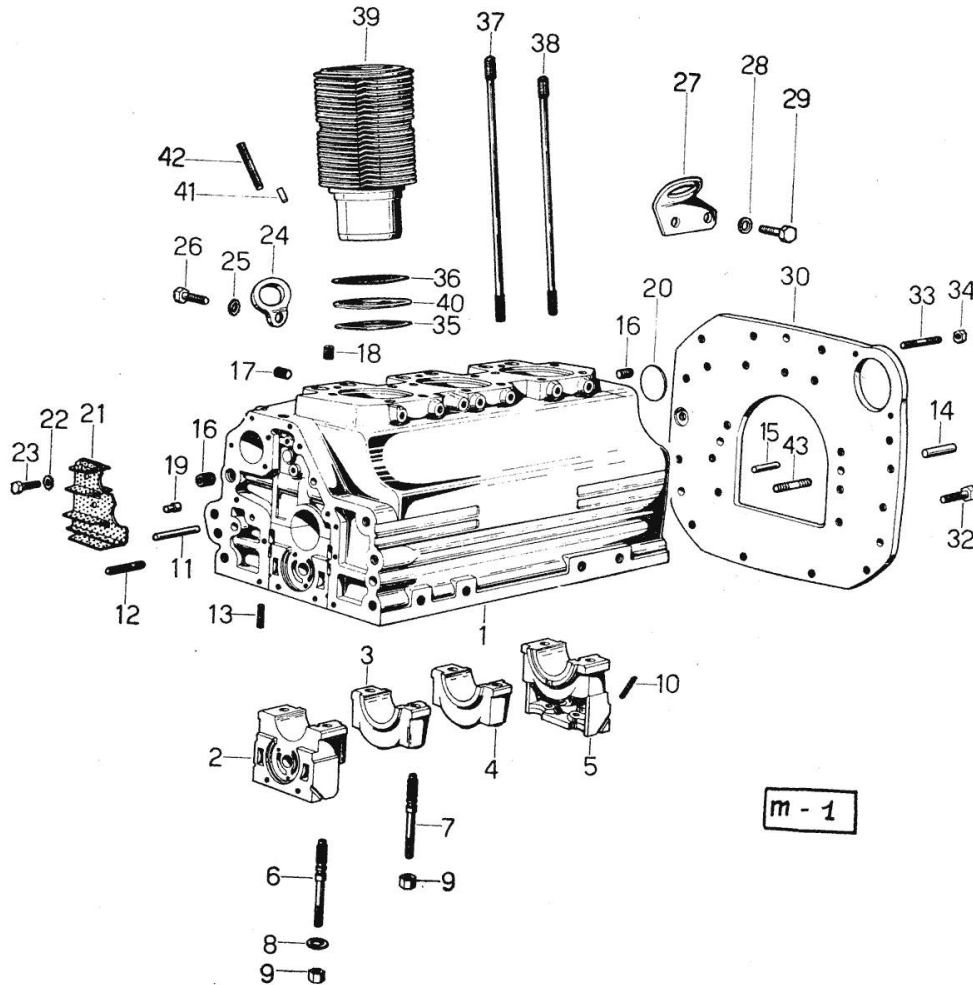


Fig.	P/n	QTY	Name
0	0.029.0050.6	1	gasket set
0	0.038.0050.6	1	FOR ENGINE INSTALLATION - 9800 <- old part number
0	0.038.0050.6/10	1	FOR ENGINE INSTALLATION -> 9801 11710 <- gasket set
1	0.029.1110.4/20	1	FOR ENGINE INSTALLATION -> 11711 old part number
1	0.035.1110.4/30	1	9800 <- crankcase
2	0.004.8776.0	1	-> 9801 - 11710 <- ORDER ALSO: 1x FLANGE 027.1154.0/30 1x PLATE 029.1155.2/20 1x SEAL 029.1153.0/10 1x FLANGE 029.1130.0/20
3	0.029.1113.0	1	support
4	0.029.1113.0	1	support
5	0.029.1116.0	1	support
6	0.021.1157.0	4	stud bolt
7	0.029.1117.0	4	stud bolt
8	2.1599.144.7	8	shoulder ring 12.5x23x4
9	2.1019.026.7	8	special nut m 12 p.1.5
10	0.029.1154.0	4	gasket
11	2.1699.116.0	1	pin
12	2.0432.018.1	6	stud bolt m 8 p.1.25 / p.1 x 65
13	2.0432.003.1	24	stud bolt m 8 p.1.25 / p.1 x 20
14	2.1652.911.0	2	cylindrical plug 12x25
15	2.1653.708.0	2	pin 8x18
16	2.3130.002.1	2	plug 1/4" gas
17	2.3139.001.1	3	plug
18	2.3130.001.1	3	plug 1/8" gas
19	2.1699.021.0	1	pin 7.8x8x20
20	2.3170.022.1	1	expansion plug 60
21	0.029.1155.2	1	filter
21	0.029.1155.2/20	1	11710 <- plate
22	2.1470.002.2	2	-> 11711 lock washer 6
23	2.0112.004.2	2	screw m 6 p.1 x 14
24	0.022.1151.0	1	bracket
25	2.1470.006.2	1	lock washer 10
26	2.0112.309.2	1	screw m 10 p.1.5 x 25
27	0.027.1157.0/10	1	old part number

Section: ENGINE
CRANKCASE

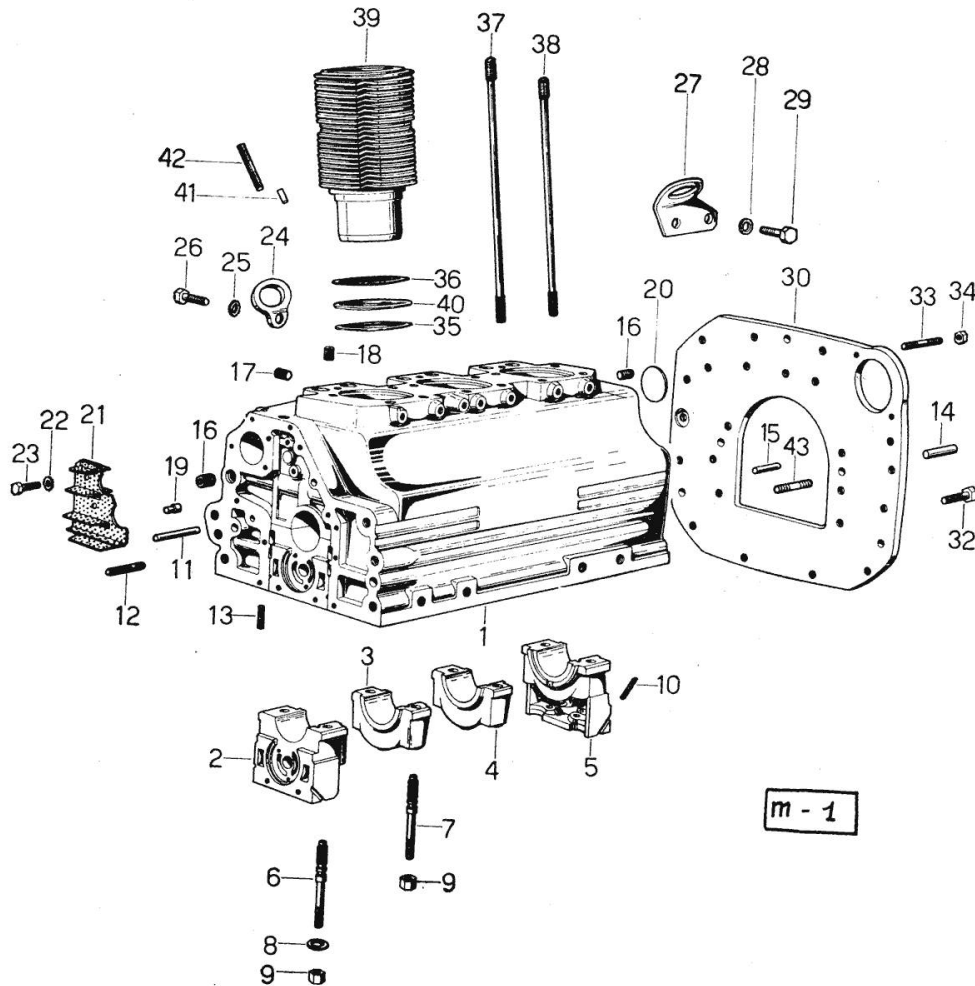


Fig.	P/n	QTY	Name
28	2.1470.006.2	1	lock washer 10
29	2.0112.309.2	1	screw m 10 p.1.5 x 25
30	0.029.1130.0/20	1	flange
			ORDER ALSO: 2x STUD BOLT 2.0432.257.1 2x WASHER 2.1470.007.2 2x NUT 2.1011.322.2
32	2.0112.511.1	11	screw m 14 p.2 x 30
33	2.0432.257.1	2	stud bolt m 12 p.1.75 - 1.25 x 30
33	2.0439.033.1	2	stud bolt m 10x28
34	2.1011.106.2	2	nut m 10 p.1.5
35	2.1589.034.0	3	shoulder ring 9800 <-
35	2.1589.036.0	3	shim -> 9801
36	2.1589.033.0	3	shoulder ring 9800 <-
36	2.1589.037.0	3	shim -> 9801
37	0.029.1123.0	12	stud bolt m 12 p.1.5x265 14021 <-
37	0.039.1122.0	12	stud bolt m 12 p.1.5x310 -> 14022
38	0.029.1122.0	3	stud bolt 9800 <-
38	0.034.1122.0	3	stud bolt -> 9921 - 11898 <-
38	0.037.1122.0	3	stud bolt -> 9801 - 9920 <- E -> 11899
39	0.029.1120.0/10	3	- 9800 <-
39	0.039.1120.0/10	3	engine cylinder -> 9801 - 11710 <- ORDER ALSO: 2x PUSHROD TUBE 034.1332.6
40	2.1569.053.0	3	gasket 9800 <-
40	2.1569.055.0	3	shim -> 9801
41	2.1653.708.0	1	pin 8x18
42	2.0432.267.1	2	stud bolt m 12 p.1.75-1.25x60
43	2.0432.153.1	2	stud bolt m 10 p.1.5 / p.1.25 x 20

Section: ENGINE
TIMING CASE 9800 <-

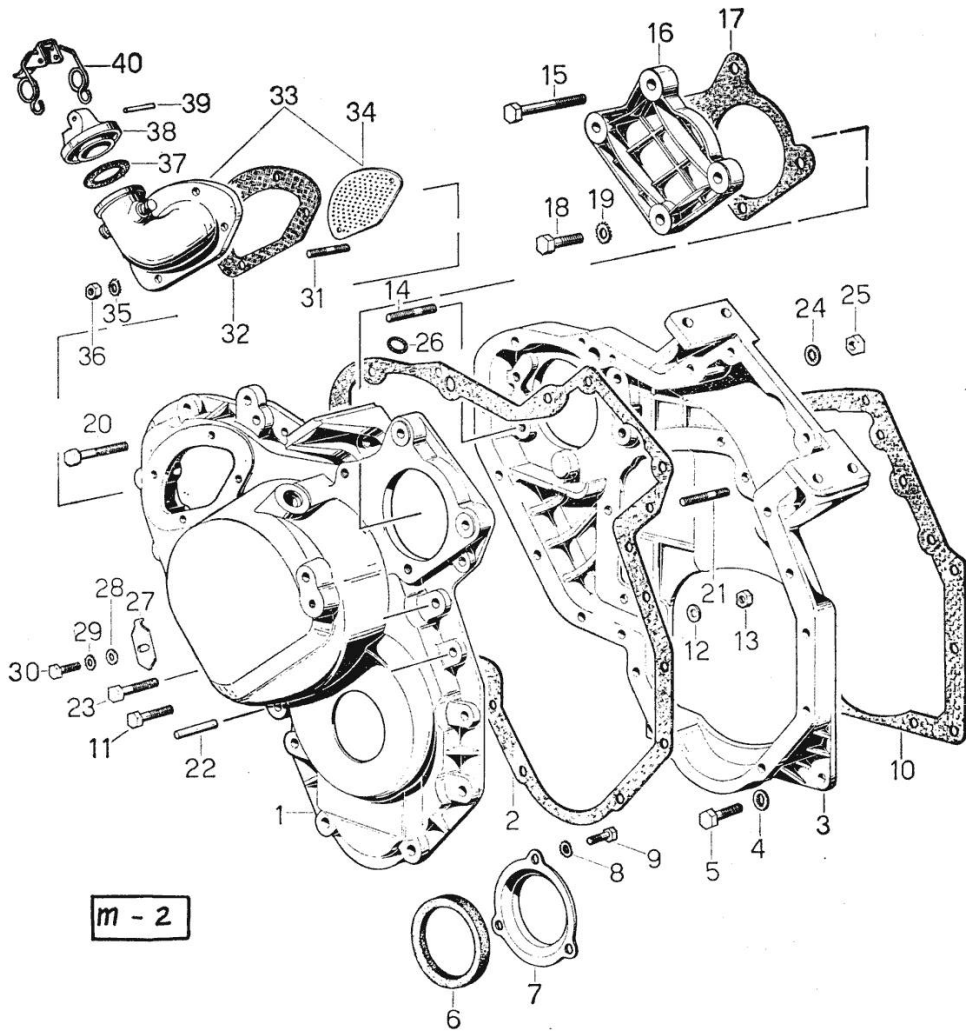


Fig.	P/n	QTY	Name
------	-----	-----	------

Notes:
[MINTAURO 50 60]

1	0.029.1132.0	1	guard 1472 <- ORDER ALSO: 1x SCREW 2.0122.229.1 1x COVER 0.029.1163.0 1x SEAL 0.054.1155.0 2x SCREW 2.0112.211.2 2x WASHER 2.1470.004.2 1x LEVER 0.029.1621.3
2	0.029.1152.0	1	gasket
3	0.029.1131.0	1	old part number
4	2.1480.014.1	8	washer 8
5	2.0112.207.2	8	screw m 8 p 1.25 x 20
6	2.1519.010.0	1	special oil seal 58x80x10
7	0.001.2241.0	1	plate
8	2.1470.002.2	3	lock washer 6
9	2.0112.001.1	3	screw m 6 p.1 x 8
10	0.029.1153.0	1	gasket
11	2.0112.213.2	4	screw m 8 p.1.25 x 35
12	2.1480.014.1	16	washer 8
13	2.1011.405.2	16	nut m 8 p.1
14	2.0432.159.1	4	stud bolt m 10 x 35
15	2.0122.229.1	1	screw m 8 x 100
16	0.029.1163.0	1	small cover
17	0.054.1155.0	1	gasket
18	2.0112.211.2	2	screw m 8 p.1.25 x 30
19	2.1470.004.2	2	lock washer 8
20	2.0122.225.2	1	screw m 8 p.1x80
21	2.0432.005.1	2	stud bolt m 8 p.1.25 / p.1 x 25
22	2.1653.711.0	1	pin
23	2.0122.215.2	2	screw
24	2.1480.014.1	1	washer 8
25	2.1011.405.2	1	nut m 8 p.1
26	2.1530.028.0	1	oil seal 11.91 x 2.62
27	0.002.2770.0	1	old part number
28	2.1310.003.2	1	flat washer 7.4x14
29	2.1470.004.2	1	lock washer 8
30	2.0112.103.1	1	screw m 7 p.1.x12
30	2.0112.204.2	1	screw m 8 p.1.25x14
31	2.0432.001.1	4	stud bolt m 14 p.2-1.5x35
32	0.029.1151.0	1	gasket
33	0.029.1134.4	1	old part number
34	0.029.1136.0	1	old part number
35	2.1480.014.1	4	washer 8
36	2.1011.405.2	4	nut m 8 p.1

<https://www.ebooklibonline.com>

Hello dear friend!

Thank you very much for reading.

Enter the link into your browser.

The full manual is available for immediate download.

<https://www.ebooklibonline.com>

Section: ENGINE
TIMING CASE 9800 <-

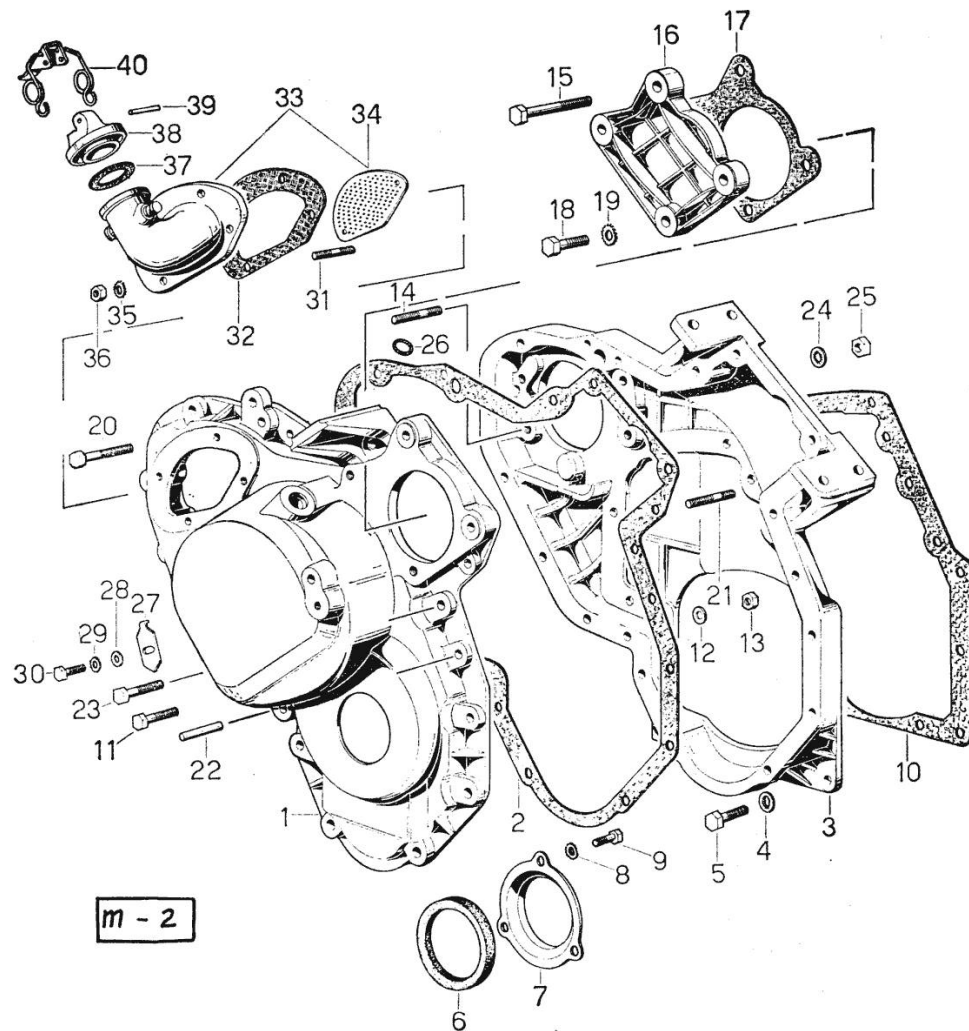


Fig.	P/n	QTY	Name
37	0.001.6692.0	1	gasket
38	0.002.8941.0	1	plug
39	2.1699.004.0	1	pin
40	0.002.9745.3	1	old part number

Section: ENGINE
TIMING CASE -> 9801

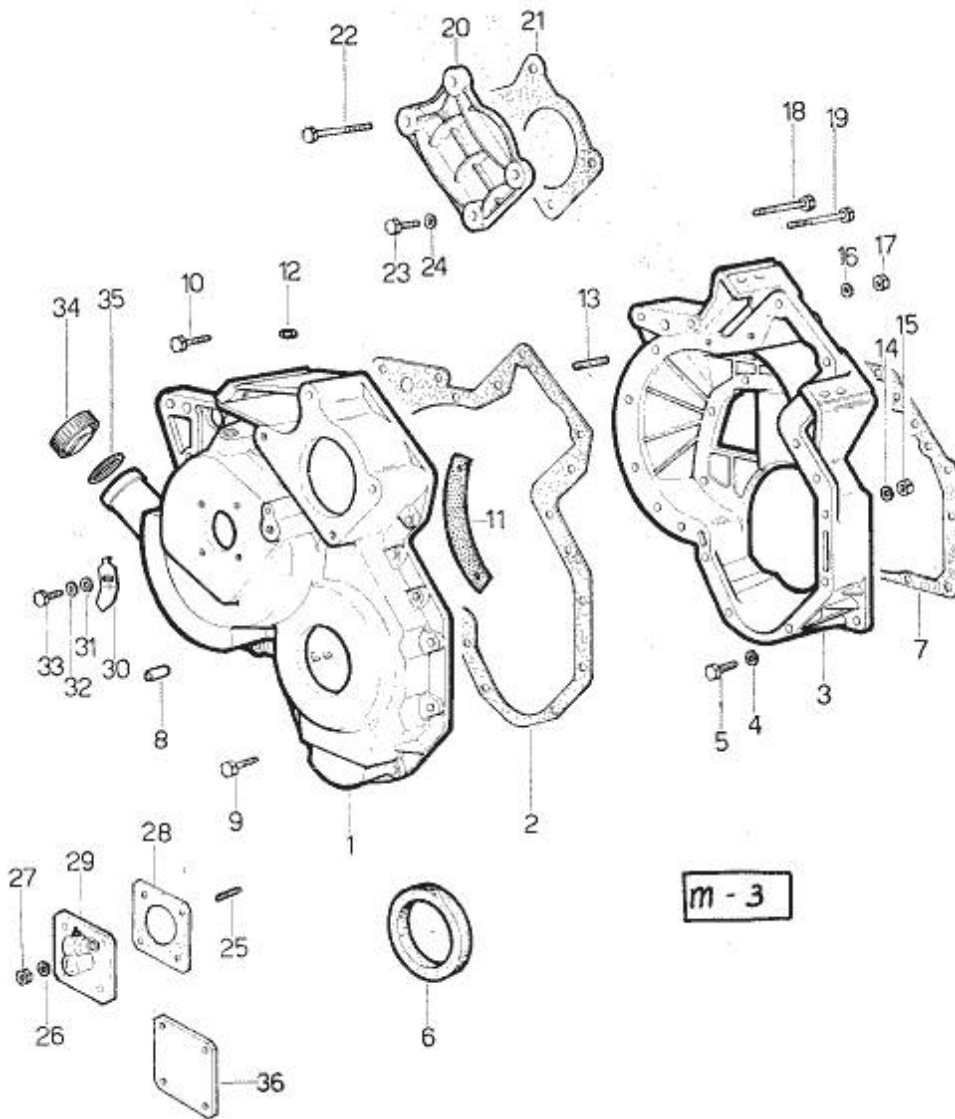


Fig.	P/n	QTY	Name
Notes: [MINTAURO 50 60]			
1	0.027.1155.0/30	1	governor housing
2	0.027.1156.0	1	gasket
3	0.027.1154.0/30	1	flange
4	2.1480.014.1	8	washer 8
5	2.0112.207.2	8	screw m 8 p 1.25 x 20
6	2.1519.010.0	1	special oil seal 58x80x10
7	0.029.1153.0	1	gasket 11710 <-
7	0.029.1153.0/10	1	gasket -> 11711
8	2.1653.711.0	1	pin
9	2.0122.213.2	4	screw m 8 p.1x35
10	2.0122.222.2	1	screw
11	0.027.1152.0/20	1	small plate
12	2.1530.028.0	1	oil seal 11.91 x 2.62
13	2.0439.060.2	3	stud bolt m 8 p.1.25-1x22
14	2.1480.014.1	15	washer 8
15	2.1011.405.2	15	nut m 8 p.1
16	2.1480.014.1	2	washer 8
17	2.1011.405.2	3	nut m 8 p.1
18	2.0122.225.2	1	screw m 8 p.1x80
19	2.0122.225.2	1	screw m 8 p.1x80
20	0.029.1163.0	1	small cover
21	0.054.1155.0	1	gasket
22	2.0122.229.1	2	screw m 8 x 100
23	2.0122.211.2	2	screw m 8 p.1x30
24	2.1480.014.1	2	washer 8
25	2.0439.055.1	4	stud bolt m 6 p.1 x 18
26	2.1480.012.1	4	washer 6, d128
27	2.1011.103.2	4	nut m 6 p.1
28	0.026.1150.0	1	gasket
29	2.7049.210.0/20	1	transmission
30	0.038.1150.0	1	index
31	2.1310.003.2	1	flat washer 7.4x14
32	2.1470.004.2	1	lock washer 8
33	2.0112.103.1	1	screw m 7 p.1.x12
34	0.022.1135.3	1	plug
35	2.1569.048.0	1	gasket
36	0.027.1153.0	1	flange

Section: ENGINE
CRANKSHAFT

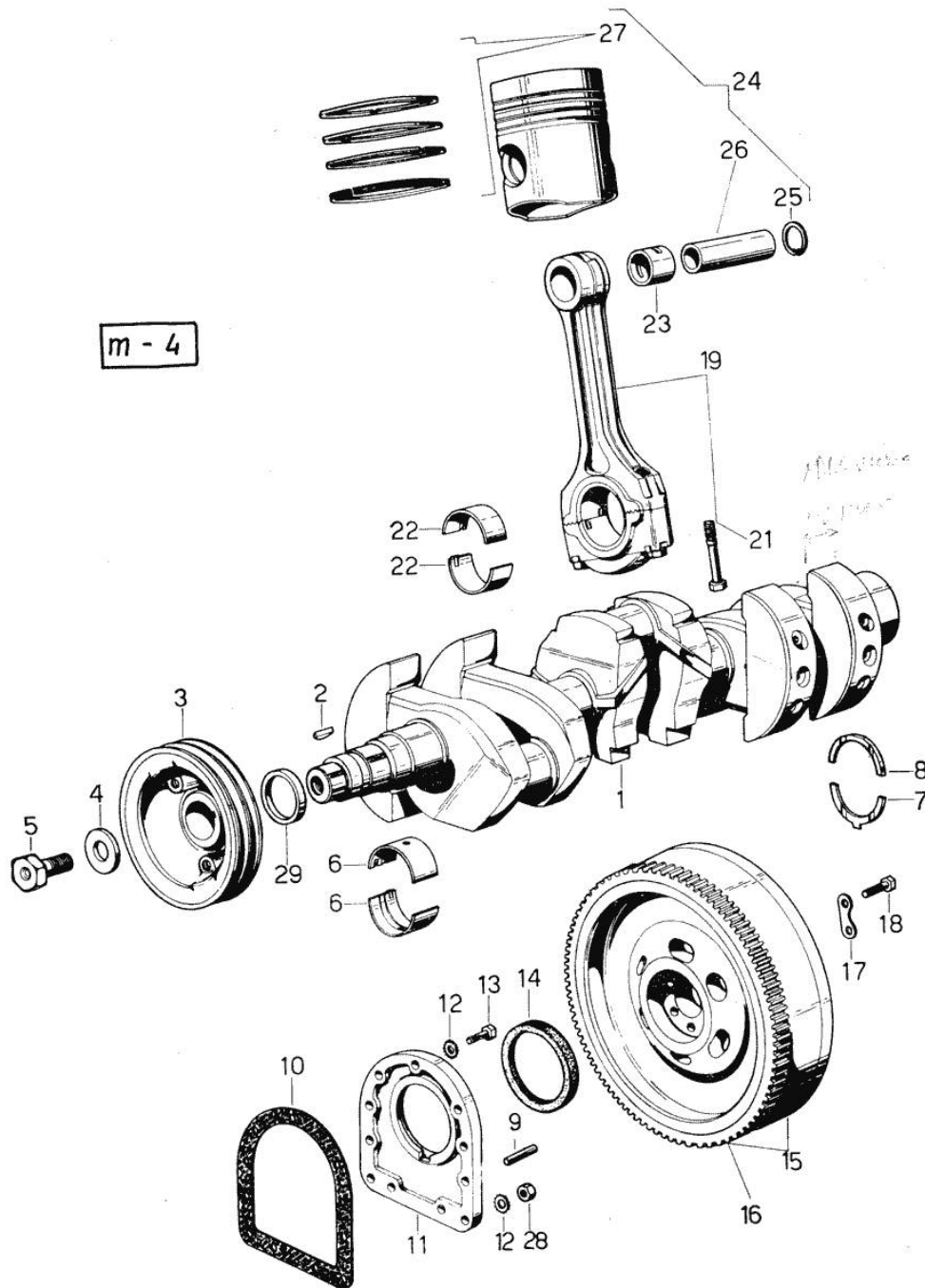


Fig.	P/n	QTY	Name
------	-----	-----	------

Notes:
[MINTAURO 50 60]

1	0.029.1210.4/30	1	crankshaft -> 15572
1	0.029.1210.6	1	crankshaft 15571 <-
2	2.1799.002.0	1	stick 10x13
3	0.029.1244.0/10	1	pulley 9800 <-
3	0.038.1244.0	1	pulley -> 9801
4	0.001.6020.0	1	shoulder
5	0.001.6019.0	1	old part number 9800 <-
5	2.0129.032.2	1	screw m 24 p.2x45 -> 9801
6	0.029.0066.0	8	main half bushing - mm 1.00
6	0.029.1215.0/10	8	main half bushing
6	0.029.1215.7	8	main half bushing - mm 0.25
6	0.029.1215.8	8	main half bushing - mm 0.50
6	0.029.1215.9	8	main half bushing - mm 0.75
7	0.001.4547.0	2	shoulder ring + mm 0.05
7	0.001.4548.0	2	shoulder ring + mm 0.10
7	0.001.4549.0	2	shoulder ring + mm 0.15
7	0.042.1219.0	2	shoulder ring STANDARD
8	0.001.4544.0	2	shoulder ring + mm 0.05
8	0.001.4545.0	2	shoulder ring + mm 0.10
8	0.001.4546.0	2	shoulder ring + mm 0.15
8	0.042.1218.0	2	shoulder ring STANDARD
9	2.1652.915.0	2	cylindrical plug 12x35
10	0.029.1250.0	1	gasket
11	0.029.1240.0	1	flange
12	2.1480.015.1	9	washer 10
13	2.0112.309.2	9	screw m 10 p.1.5 x 25
14	2.1519.009.0	1	special oil seal
15	0.029.1241.3	1	old part number
16	0.029.1242.0	1	crown wheel Z = 120, mm 20
16	0.038.1242.0	1	crown wheel Z = 120, mm 15
17	2.1379.006.0	3	lock-tab 15x15x36,5
18	2.0122.515.7	6	screw
19	0.029.1220.3	3	engine connecting rod 15571 <-
19	0.039.1220.3/20	3	engine connecting rod

Section: ENGINE
CRANKSHAFT

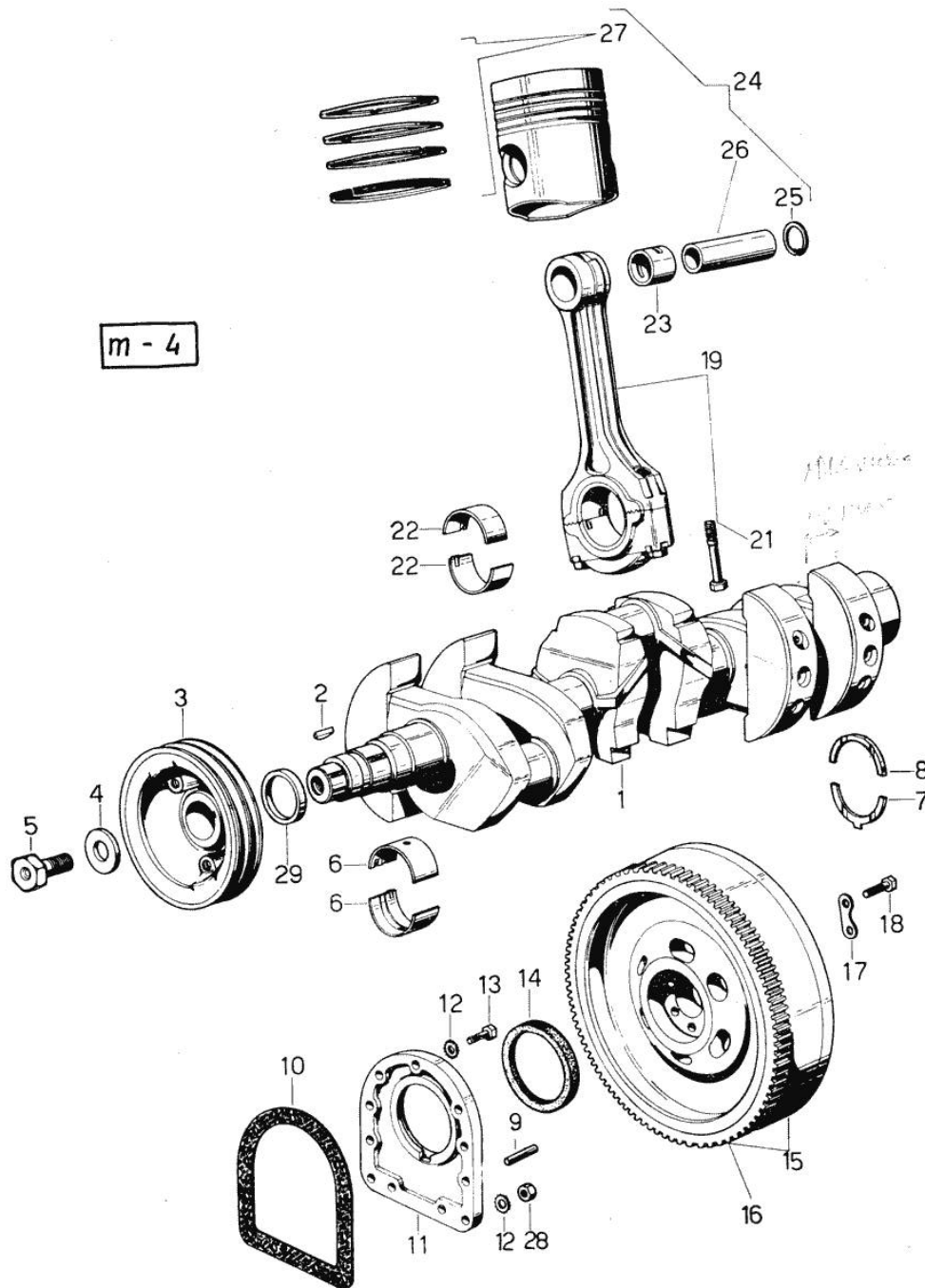


Fig.	P/n	QTY	Name
			-> 15572
21	0.002.3910.0	6	screw 15571 <-
21	0.039.1250.0	6	screw m 14 p.1.5x63 -> 15572
22	0.021.0068.0	6	con.rod half bushing
22	0.021.1225.0	6	con.rod half bushing STANDARD 15571 <-
22	0.021.1225.7	6	con.rod half bushing - mm 0.25
22	0.021.1225.8	6	con.rod half bushing - mm 0.50
22	0.021.1225.9	6	con.rod half bushing - mm 0.75
22	0.039.0068.0	6	con.rod half bushing - mm 1.016
22	0.039.1225.0	6	con.rod half bushing -> 15572
22	0.039.1225.7	6	con.rod half bushing -mm 0.254
22	0.039.1225.8	6	con.rod half bushing -mm 0.508
22	0.039.1225.9	6	con.rod half bushing -mm 0.762
23	0.002.4168.0	3	bearing
24	0.029.0060.6	3	complete piston STANDARD 9800 <-
24	0.029.0061.6	3	complete piston + mm 0.5
24	0.029.0062.6	3	complete piston + mm 1.0
24	0.038.0060.6/10	3	complete piston STANDARD -> 9801
24	0.038.0061.6/10	3	complete piston + mm 0.50
24	0.038.0062.6/10	3	complete piston + mm 1.0
25	2.1411.014.1	6	circlip 35
26	0.002.4167.0	3	piston pin 9800 <-
26	0.038.1236.0	3	piston pin -> 9801
27	0.029.0052.6	3	piston ring set 9800 <-
27	0.029.0053.6	3	piston ring set + mm 0.5
27	0.029.0054.6	3	piston ring set + mm 1.0
27	0.054.0052.6	3	piston ring set -> 9801
27	0.054.0053.6	3	piston ring set + mm 0.5
27	0.054.0054.6	3	piston ring set + mm 1.0
28	2.1011.421.2	2	nut m 10 p.1.25
29	0.034.1256.0	1	spacer -> 16437

Section: ENGINE
CAMSHAFT 9800 <-

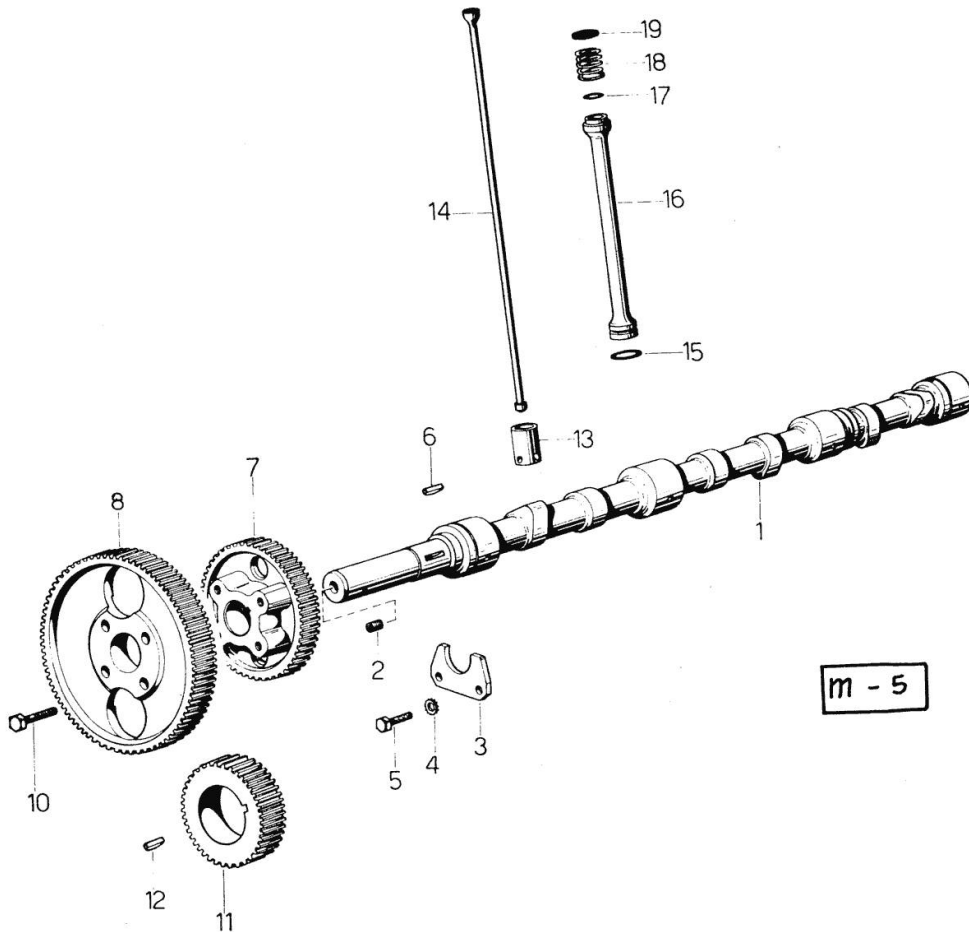


Fig.	P/n	QTY	Name
------	-----	-----	------

Notes:
 [MINITAURO 50 60]

1	0.029.1310.0/20	1	camshaft -> 321
1	0.029.1310.6	1	camshaft 320 <-
2	2.0512.203.1	1	screw
3	0.002.4228.0	1	shoulder
4	2.1470.004.2	2	lock washer 8
5	2.0312.208.1	2	screw m 8 p.1.25 x 25
6	2.1720.010.0	1	key 5x9
7	0.029.1323.0	1	gear
8	0.029.1321.0/20	1	gear 320 <- ORDER ALSO: 1x CAMSHAFT 0.029.1310.0/20
10	2.0139.006.1	4	screw
11	0.029.1320.0	1	gear Z = 45
12	2.1720.010.0	1	key 5x9
13	0.002.3909.0	6	tappets
14	0.002.4180.0	6	rod
15	2.1539.018.0	6	special oil seal
16	0.029.1332.0	6	sleeve
17	2.1530.029.0	6	oil seal 12.37x2.62
18	2.4019.090.1	6	spring 25x34x2.5
19	2.1569.037.0	6	gasket

Section: ENGINE

CAMSHAFT -> 9801

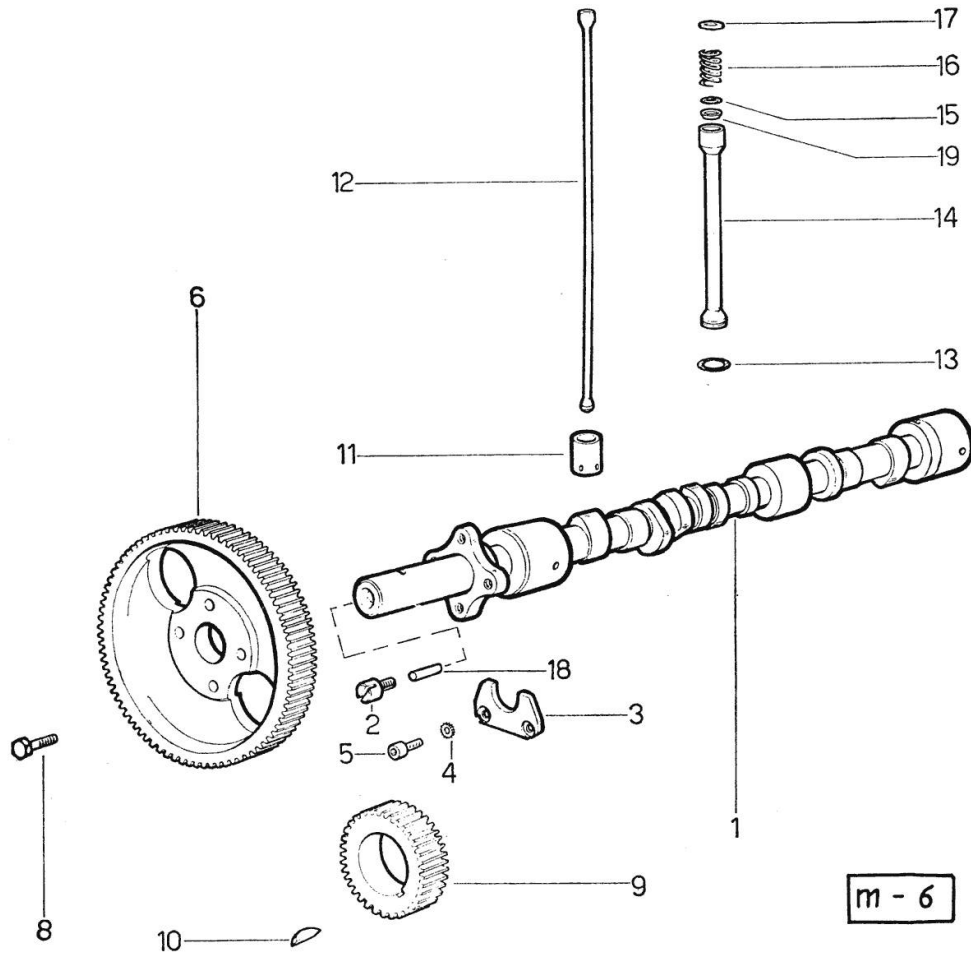


Fig.	P/n	QTY	Name
------	-----	-----	------

Notes:
[MINTAURO 50 60]

1	0.035.1310.0/10	1	camshaft
2	0.027.1350.0/20	1	pin
3	0.027.1314.0	1	flange
4	2.1470.004.2	2	lock washer 8
5	2.0312.206.2	2	screw m 8 p 1.25 x 20
6	0.035.1321.0	1	gear
8	2.0139.006.1	4	screw
9	0.029.1320.0	1	gear Z = 45
10	2.1720.010.0	1	key 5x9
11	0.002.3909.0	6	tappets
12	0.002.4180.0	6	rod
12	0.037.1331.0	6	rod -> 9921 - 11898 <- 9920 <- E -> 11899
13	2.1539.018.0	6	special oil seal
14	0.034.1332.6	6	sleeve 11710 <- -> 11711
14	0.039.1332.0/10	6	sleeve -> 11711
15	2.1539.022.0	6	special oil seal 12.37x2.62
16	2.4019.090.1	6	spring 25x34x2.5 11710 <- -> 11711
16	2.4019.149.1	6	spring 14x29x2 -> 11711
17	2.1569.037.0	6	gasket
18	2.1650.513.0	1	pin 6 x 30
19	0.039.1350.0	6	ring 24697 <-

m - 6



Suggest:

For more complete manuals. Please go to the home page.

<https://www.ebooklibonline.com>

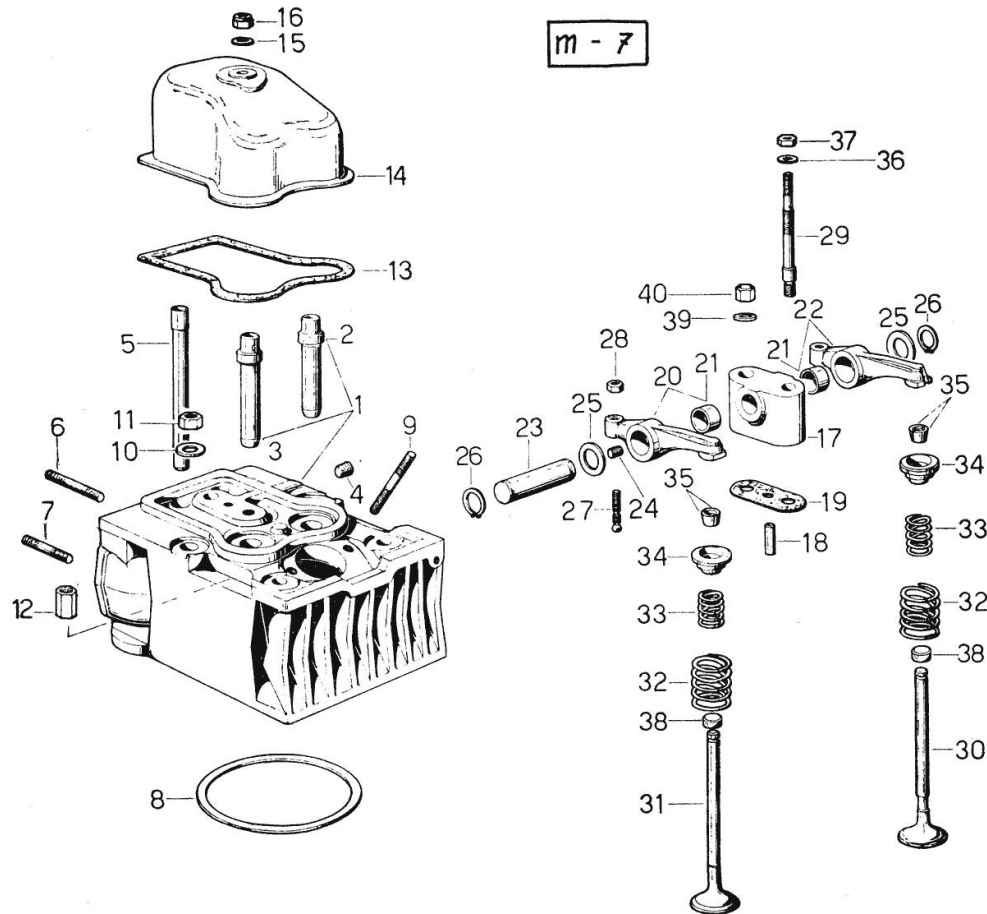
If the above button click is invalid. Please download this document first, and then click the above link to download the complete manual.

Thank you so much for reading

Section: ENGINE
CYLINDER HEAD 9800 <

Fig.	P/n	QTY	Name
------	-----	-----	------

Notes:
[MINTAURO 50 60]



0	0.029.0057.6	1	gasket set - FOR 1 CYLINDER VALVE GRINDING AND PISTON RINGS REPLACEMENT
1	0.029.1410.3	3	engine head
2	0.029.1417.0	3	valve guide
3	0.037.1417.0/10	3	valve guide
4	2.3130.001.1	3	plug 1/8" gas
5	0.029.1418.0	6	sleeve
6	2.0432.007.1	3	stud bolt m 8 p.1.25 / p.1 x 30
6	2.0432.022.1	1	stud bolt m 8 p 1.25-1x85
6	2.0432.026.1	2	stud bolt m 8 p.1.25 - 1.00 x 110
7	2.0432.003.1	6	stud bolt m 8 p.1.25 / p.1 x 20
8	2.1589.035.0	3	shoulder ring
9	2.0432.011.1	6	stud bolt m 8 p.1.25 / p.1 x 40
10	2.1599.144.0	12	shoulder
11	2.1019.025.1	10	special nut
12	2.1019.037.1	2	nut m 12 p.1.5x35
13	0.029.1450.0	3	gasket
14	0.029.1440.2	3	cap
15	2.1560.004.0	3	copper gasket 8.2 x 14
16	2.1099.056.1	3	special nut m8 p.1
17	0.029.1430.0	3	old part number
18	0.029.1452.0	3	tube
19	0.029.1451.0/10	3	gasket
20	0.002.5937.3/30	3	rocker arm
21	2.1559.021.0/40	6	bushing 15x19x22
22	0.002.5936.3/40	3	rocker arm
23	0.029.1431.0	3	pin
24	2.0512.102.1	3	screw m 6 p.1 x 8
25	2.1599.019.0	6	shoulder ring 19.5x31x2
26	2.1410.055.1	6	circlip 19
27	0.021.1434.0	6	screw
28	2.1011.405.2	6	nut m 8 p.1
29	0.029.1453.0/10	3	stud bolt
30	0.029.1421.0/10	3	exhaust valve Ø mm 9 4401 <- ORDER ALSO: 6x PROTECTION 0.021.1453.0/20
31	0.029.1420.0/10	3	inlet valve Ø mm 9 4401 <- ORDER ALSO: 6x PROTECTION 0.021.1453.0/20
32	2.4019.193.0	6	spring 36.15x55.2x3.2

Section: ENGINE
CYLINDER HEAD 9800 <

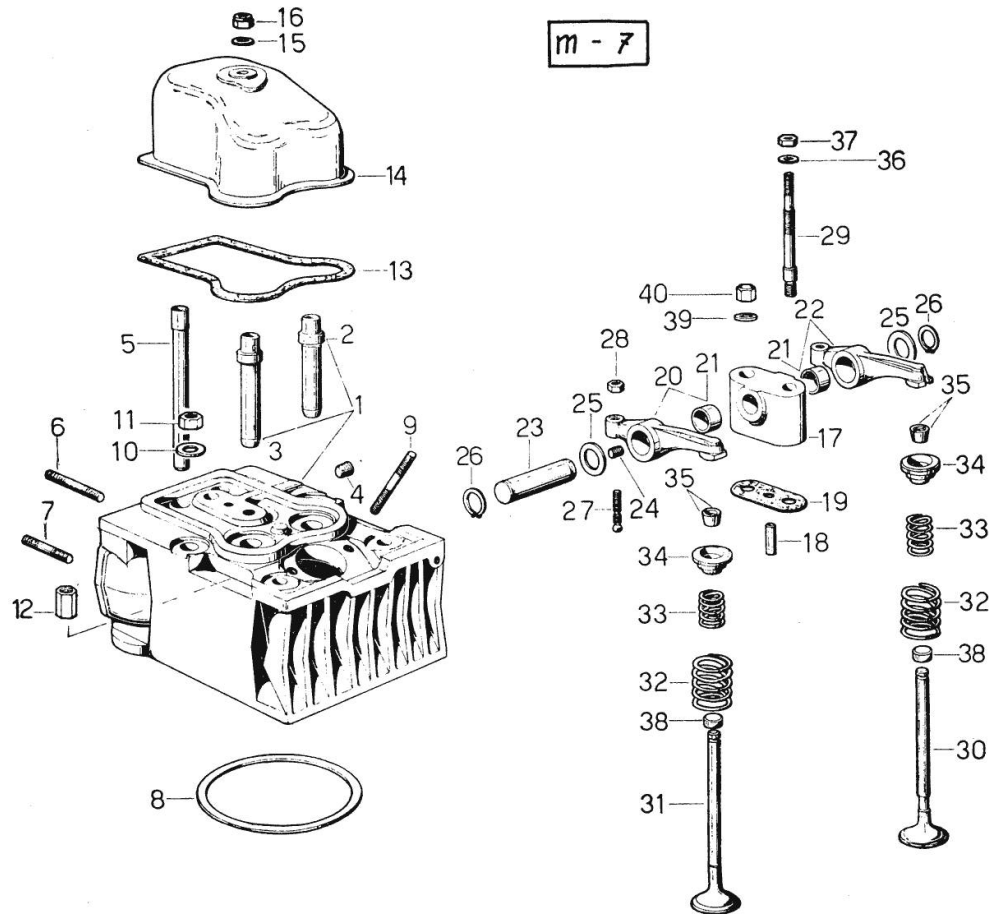


Fig.	P/n	QTY	Name
33	2.4019.194.0	6	spring 22.70x50.7x2.1
34	0.002.9215.0	6	cup
35	0.002.9193.0	12	conical valve cotter
36	2.1310.006.2	3	flat washer 10.5x21
37	2.1011.421.2	3	nut m 10 p.1.25
38	0.021.1453.0/20	6	small cover
39	2.1599.160.0	3	washer 10.5x19x4
40	2.1099.035.1	3	special nut

<https://www.ebooklibonline.com>

Hello dear friend!

Thank you very much for reading.

Enter the link into your browser.

The full manual is available for immediate download.

<https://www.ebooklibonline.com>