

**COMPRESSOR-PARTS**

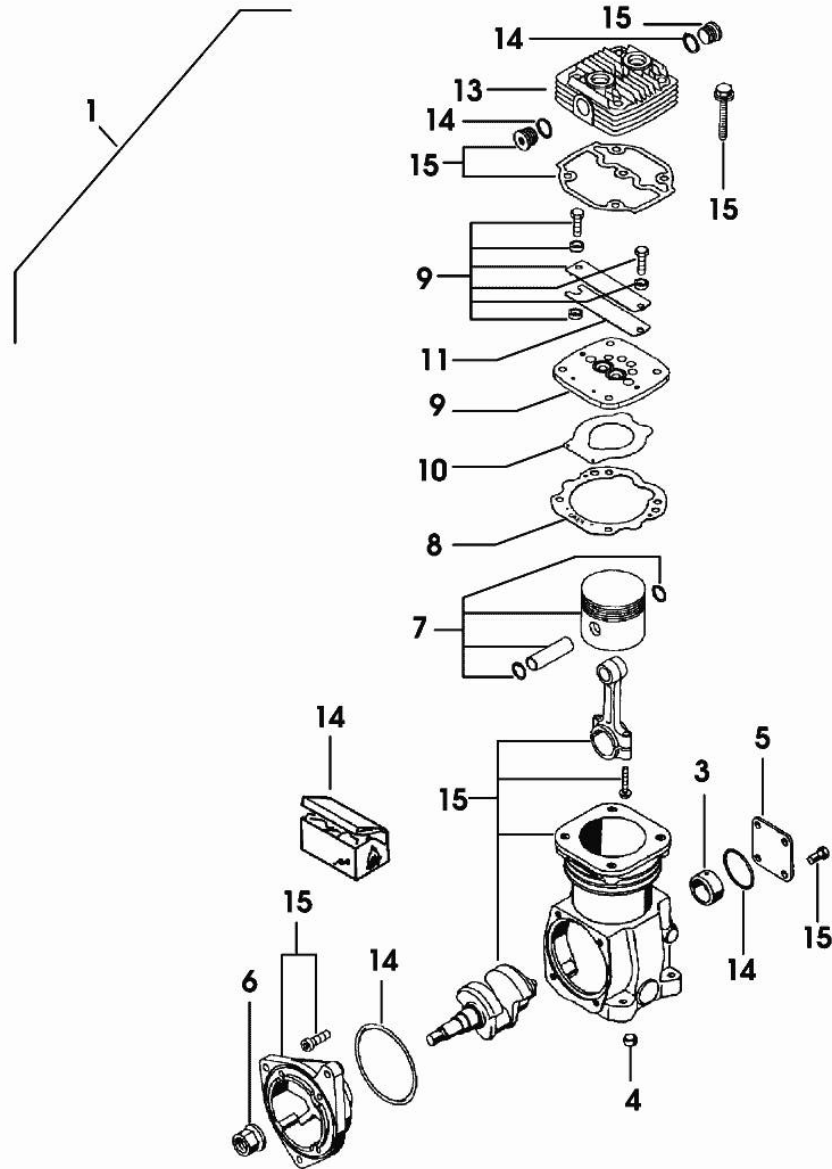


Fig.	P/n	QTY	Name
1	04428408.4	1	air compressor 229 cm <sup>3</sup>
3	04436267	1	bushing
4	01151194	2	cover
5	04436268	1	cover
6	04436276	1	nut
7	04436269	1	piston
8	04436270	1	gasket
9	04436271	1	valve
10	04436272	1	thin plate
11	04436273	1	thin plate
13	04436275	1	cover
14	04436277	1	sub-assy parts
15	0.000.0000.1		cannot be supplied

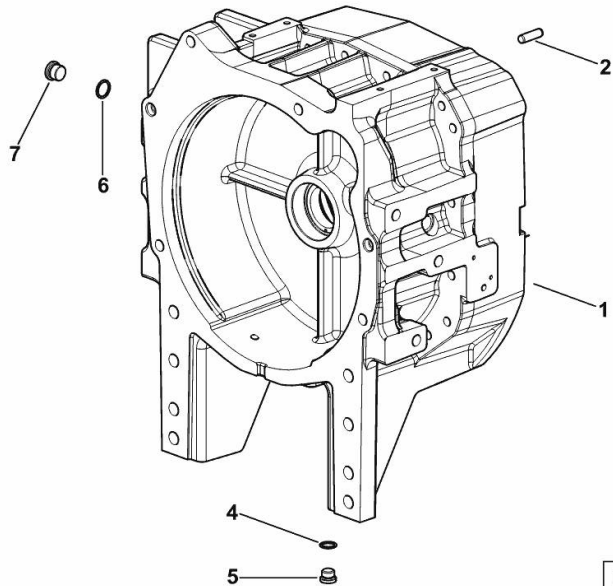
0442\_6744\_4

**JUNCTION CASE**

Fig.	P/n	QTY	Name
------	-----	-----	------

Notes:  
[IRON<sup>3</sup> 220 DCR]

1	0.013.1429.0/40	1	flange
2	2.1651.917.0	1	cylindrical plug 12x40
4	2.1560.014.0	2	washer 18.2 x 24
5	2.3120.001.4	1	plug m 18 p.1.5
6	2.1560.017.0	1	gasket 22.2 x 27
7	2.3120.002.4	1	plug m 22 x 1.5



K9\_U1031\_03\_0-A-001

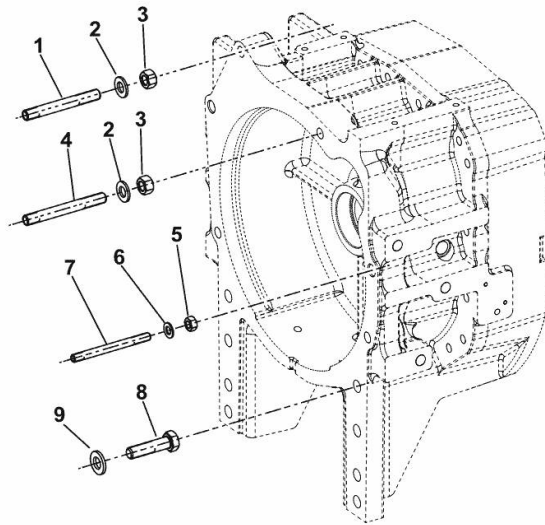
**FIXING PARTS - MOTOR - GEARS**

Fig.	P/n	QTY	Name
------	-----	-----	------

Notes:  
[IRON<sup>3</sup> 220 DCR]

1	2.0433.426.7	1	stud bolt m 16 p.1.5x110
2	2.1475.006.2	4	spring washer 16
3	2.1012.409.7	4	nut m 16
4	2.0433.427.7	3	stud bolt m 16 p.1.5x120
5	2.1012.422.7	2	nut m 12
6	2.1475.004.2	2	spring washer 12
7	2.0433.277.7	2	stud bolt m 12 p.1,25x120
8	2.0113.723.2	8	screw m 18 p.2.5X70
9	2.1475.007.7	8	washer 18

K9\_J5727\_03\_0-A-001



**<https://www.ebooklibonline.com>**

Hello dear friend!

Thank you very much for reading.

Enter the link into your browser.

The full manual is available for immediate download.

**<https://www.ebooklibonline.com>**

Section: D0 - TRANSMISSION  
**HYDRAULIC SHUTTLE**

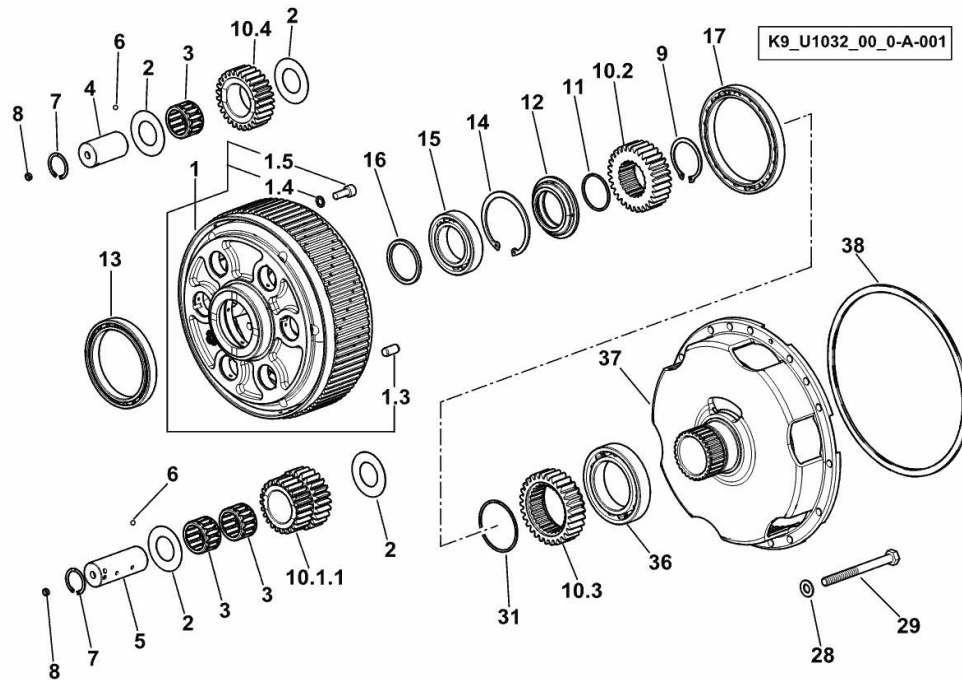


Fig.	P/n	QTY	Name
------	-----	-----	------

Notes:  
 [IRON<sup>3</sup> 220 DCR]

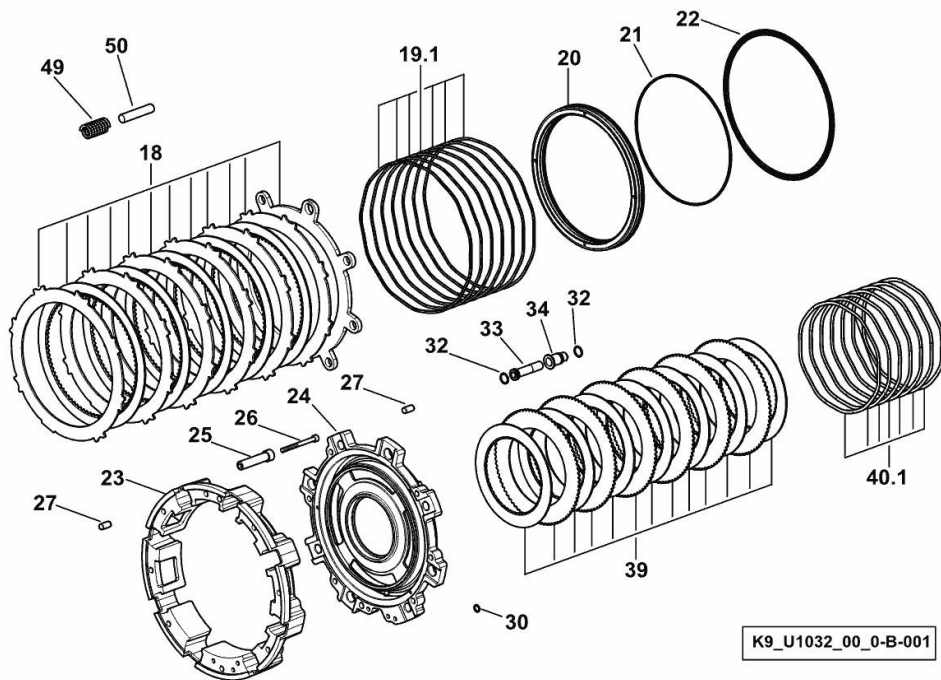
1	0.015.7164.3/20	1	spider
1.3	2.1651.809.0	1	cylindrical plug 10x20
1.4	2.1480.014.1	6	washer 8
1.5	2.0314.206.2	6	screw
2	2.1589.514.0	12	slewing ring
3	2.2999.452.0	9	roller cage
4	0.012.9776.0/10	3	pin
5	0.012.9538.0/10	3	pin
6	2.2819.003.0	6	ball 4.5
7	2.1411.012.1	6	circlip 30
8	2.3171.002.4	6	plug 8
9	2.1410.018.7	1	circlip 45
10.1.1	0.012.9156.0/10	3	planet gear
10.2	0.012.9154.0	1	hub
10.3	0.012.9157.0	1	hub
10.4	0.012.9777.0/10	3	planet gear
11	2.1532.102.0	1	oil seal 39.42x2.62
12	0.014.1043.0/20	1	spacer
13	2.2011.019.0	1	bearing 90x115x13
14	2.1411.030.7	1	circlip 75x2.5
15	2.2021.013.0	1	ball bearing 45x75x16
16	2.1599.907.0	1	shoulder ring
17	2.2999.454.0	1	bearing 105x130x13
28	2.1475.003.7	8	washer 10.5
29	2.0112.331.2	8	screw m 10 p.1.5x110
31	2.1422.037.7	2	circlip 60x1.5
36	2.2021.016.0	1	ball bearing 60x95x18
37	0.014.0886.0/10	1	flange
38	2.1499.248.0/10	1	ring

Section: D0 - TRANSMISSION  
**HYDRAULIC SHUTTLE**

Fig.	P/n	QTY	Name
------	-----	-----	------

Notes:  
 [IRON<sup>3</sup> 220 DCR]

18	0.014.0867.3/10	1	transmission brake
19.1	2.4099.169.1	7	spring
20	0.012.9919.0/10	1	piston
21	2.1539.117.0	1	oil seal 266.29x3.53
22	2.1532.031.0	1	oil seal 291.64x3.53
23	0.015.7258.0/10	1	flange
24	0.015.7257.0/10	1	cover
25	2.1549.634.0	2	bush
26	2.0312.224.2	2	screw m 8 p.1.25 x 90
27	2.1651.911.0	1	cylindrical plug
30	2.1539.071.0	13	special oil seal 11.11x1.78
32	2.1532.049.0	4	oil seal 18.77x1.78
33	0.015.7225.0	2	tube
34	0.015.7223.0/10	2	bushing
39	0.012.9772.3/20	1	clutch assy
40.1	2.4099.149.7	7	spring
49	2.4019.789.1	8	spring
50	2.1699.179.0	4	pin

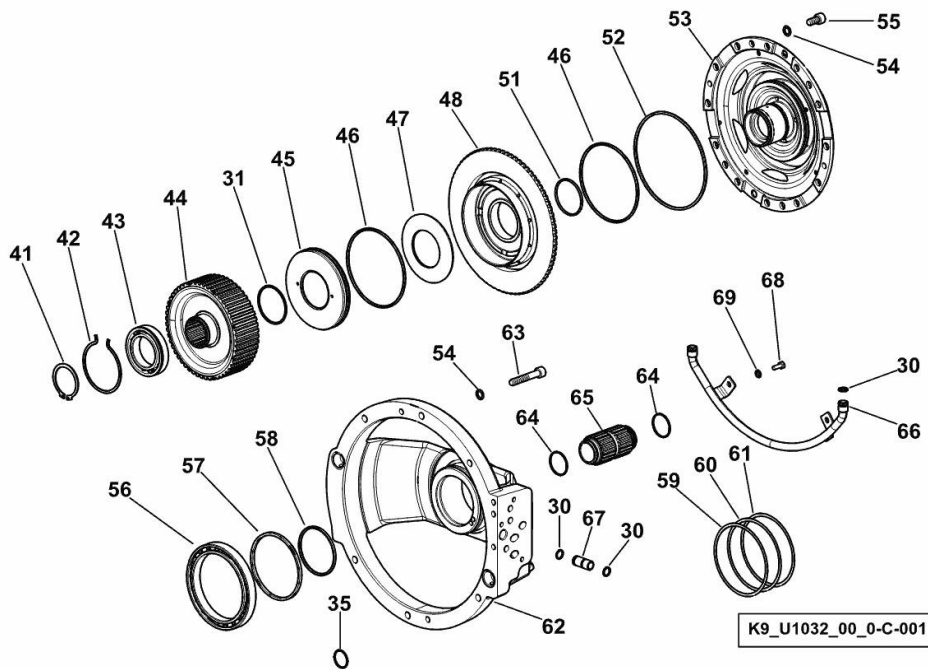


Section: D0 - TRANSMISSION  
**HYDRAULIC SHUTTLE**

Fig.	P/n	QTY	Name
------	-----	-----	------

Notes:  
 [IRON<sup>3</sup> 220 DCR]

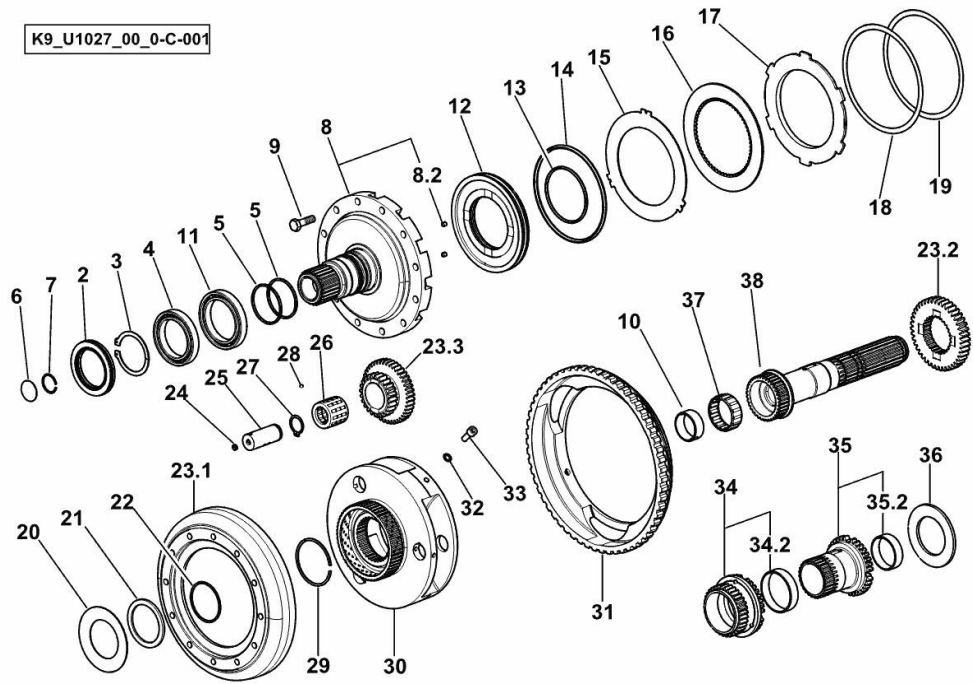
30	2.1539.071.0	13	special oil seal 11.11x1.78
31	2.1422.037.7	2	circlip 60x1.5
35	2.1532.072.0	2	oil seal 26.70x1.78
41	2.1410.020.1	1	circlip 50
42	2.1499.230.1	1	circlip Ø 76
43	2.2044.007.0	1	bearing 50x80x16
44	0.014.0895.0/20	1	hub
45	0.012.9767.0/20	1	cap
46	2.1532.222.0	2	oil seal 120.24x3.53
47	2.4099.171.7	5	spring
48	0.015.3729.0/10	1	piston
51	2.1532.133.0	1	oil seal 53.64x2.62
52	2.1532.256.0	1	oil seal 152x3.53
53	0.014.2088.0/40	1	flange
54	2.1480.015.2	22	washer 10
55	2.0314.306.2	16	screw m10 p.1.5x20
56	2.2999.498.0	1	bearing 110x140x16
57	2.1499.247.7/10	1	ring
58	2.1499.112.7	3	circlip 80x2.8
59	2.1580.407.9	2	shim 110.5x119.5x0.15
60	2.1580.401.9	2	shim 110.5x119.5x0.2
61	2.1580.402.9	1	shim 110.5x119.5x0.5
62	0.012.9755.3/70	1	flange
63	2.0312.318.2	6	screw m 10 x 60
64	2.1532.092.0	2	ring 34.65x1.78
65	0.013.0246.0	1	sleeve
66	0.015.7370.3	1	tube
67	0.014.0899.0/20	1	tube
68	2.0112.005.2	2	screw m 6 p.1 x 16
69	2.1475.001.7	2	washer 6.4x12



**H-M-L UNIT**

Fig.	P/n	QTY	Name
------	-----	-----	------

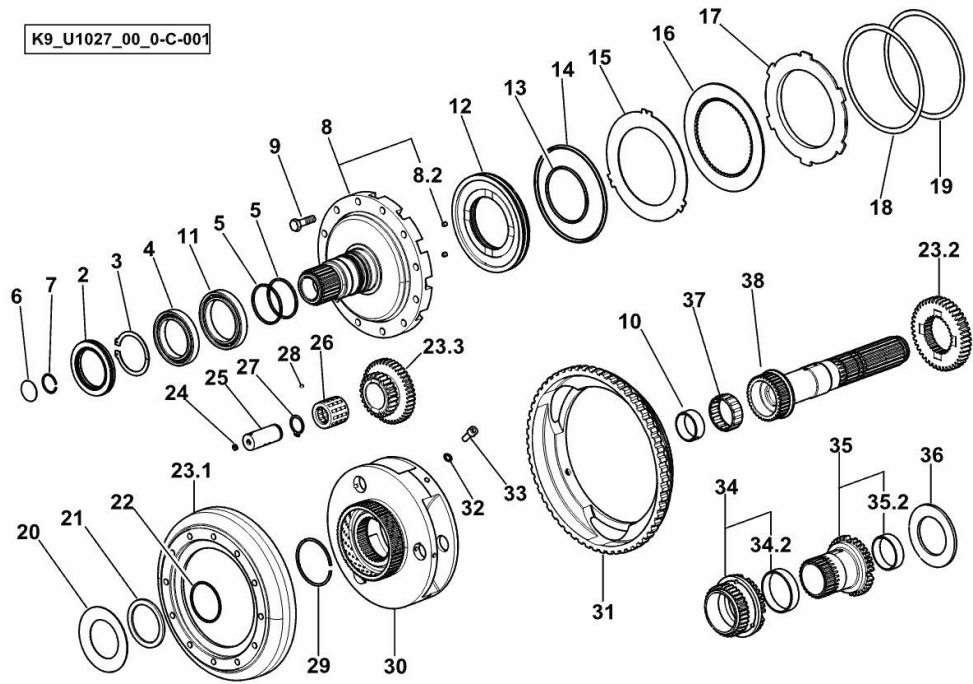
Notes:  
[IRON<sup>3</sup> 220 DCR]



2	2.1519.116.0/10	1	oil seal 85
3	2.1410.024.1	1	circlip Ø 60 mm
4	2.2999.272.0	1	special bearing 60x85x13
5	2.1499.108.7	2	ring 57.70x62x2.15
6	2.3170.013.2	1	expansion plug 32
7	2.1421.011.1	1	circlip b 28
8	0.016.2783.3	1	container
8.2	2.0512.101.1	2	screw
9	2.0132.209.2	12	screw m 10 p.1.25 x 35
10	2.1559.299.0	1	special bushing 40x45x17
11	2.2010.014.0	1	ball bearing
12	0.008.4542.0/60	1	piston
13	2.1539.113.0	1	oil seal 82.14 x 3.53
14	2.1539.114.0	1	oil seal 142.24x5.33
15	0.008.5203.0/20	3	clutch plate mm 2.10
16	0.007.7499.2	3	clutch plate mm 3.50
17	0.008.4567.0/10	1	disc mm 4 - mm 9
18	2.1589.223.0	2	shoulder ring 154x170x0.5
19	2.1589.222.0	3	shoulder ring 154x170x0.2
20	2.4099.068.1	1	spring 60.8x102
21	2.1549.084.0	1	spacer 60x75x3
22	2.1422.037.7	1	circlip 60x1.5
23.1	0.008.4552.0/10	1	crown wheel
23.2	0.008.4548.0/20	1	gear
23.3	0.011.8735.3	1	planet gear n. 3
24	2.3171.002.4	3	plug 8
25	0.011.8733.0/10	3	pin mm 25x60.2
26	2.2999.427.0	3	roller bearing 25X41
27	2.1410.010.1	3	circlip 25
28	2.2819.003.0	3	ball 4.5
29	2.1422.041.7	1	circlip 70x1.5
30	0.013.4048.0/10	1	spider
31	0.013.5991.0/40	1	gear wheel Z = 58
32	2.1480.014.2	3	washer 8
33	2.0314.206.2	3	screw
34	0.015.2261.3/10	1	gear
34.2	2.1559.268.0/10	1	special bushing
35	0.016.3232.3	1	shaft
35.2	2.1559.269.0/10	1	special bushing
36	2.1599.608.0	1	shoulder ring 48.2x78x4
37	2.2999.261.0	1	roller cage 45x55x20

**H-M-L UNIT**

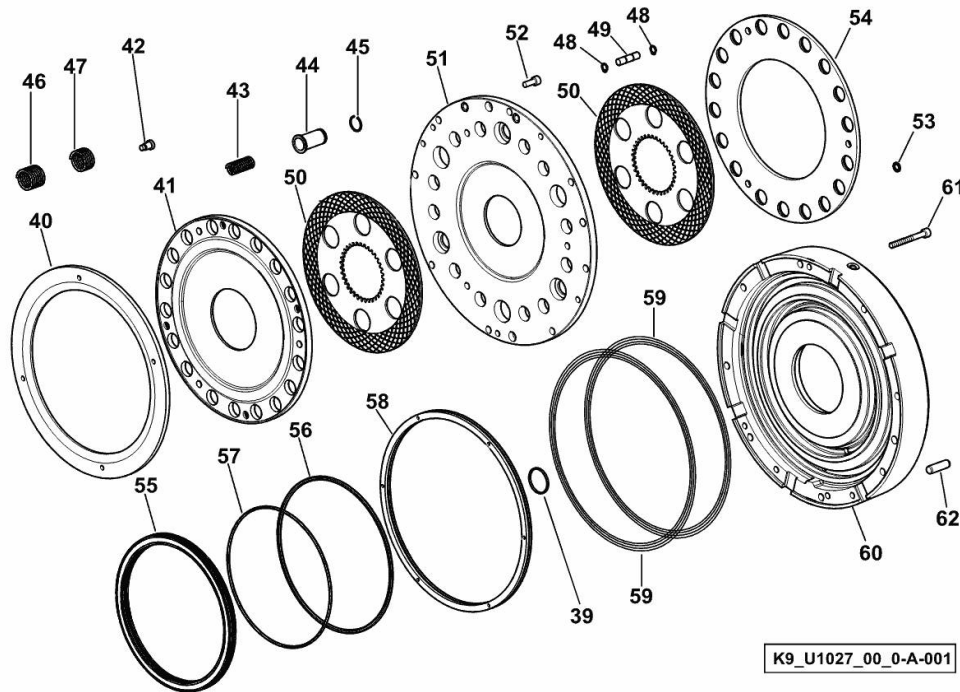
Fig.	P/n	QTY	Name
38	0.012.9847.0/40	1	shaft



**H-M-L UNIT**

Fig.	P/n	QTY	Name
------	-----	-----	------

Notes:  
[IRON<sup>3</sup> 220 DCR]



39	2.1499.109.0/10	1	ring 37.1x40x2.5
40	0.013.0857.0	1	flange
41	0.015.2231.0	1	disc
42	2.0169.022.7/10	4	screw
43	2.4019.788.0	18	spring 18x11x56.5
44	2.1559.438.0	18	bushing
45	2.1420.009.7	9	ring Ø 22
46	2.4019.465.0	3	spring 25.1x32.5x50
47	2.4019.466.0	3	spring 25.1x32.5x29.5
48	2.1410.001.1	6	circlip 10
49	2.1699.304.0	3	pin 10x8x42
50	0.015.2236.2	2	clutch plate
51	0.015.2194.0/10	1	disc
52	2.0312.206.2	2	screw m 8 p 1.25 x 20
53	2.1532.018.0	4	oil seal 9.19 x 2.62
54	0.013.0859.0/10	1	disc
55	0.012.9933.0	1	piston
56	2.1532.302.0	1	oil seal 234.54x3.53
57	2.1532.296.0	1	oil seal 215.5 x 3.53
58	0.014.0107.0	1	piston
59	2.1532.031.0	2	oil seal 291.64x3.53
60	0.014.0863.3/40	1	flange
61	2.0312.220.2	3	screw m 8 p.1.25x70
62	2.1651.911.0	1	cylindrical plug

K9\_U1027\_00\_0-A-001



**Suggest:**

**For more complete manuals. Please go to the home page.**

**<https://www.ebooklibonline.com>**

**If the above button click is invalid. Please download this document first, and then click the above link to download the complete manual.**

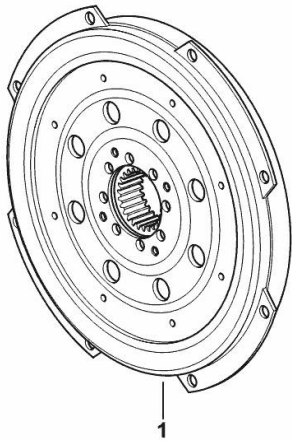
**Thank you so much for reading**

**FLEXIBLE COUPLINGS**

Fig.	P/n	QTY	Name
------	-----	-----	------

Notes:  
[IRON<sup>3</sup> 220 DCR]

1	0.013.8769.4/20	1	flexible coupling
---	-----------------	---	-------------------



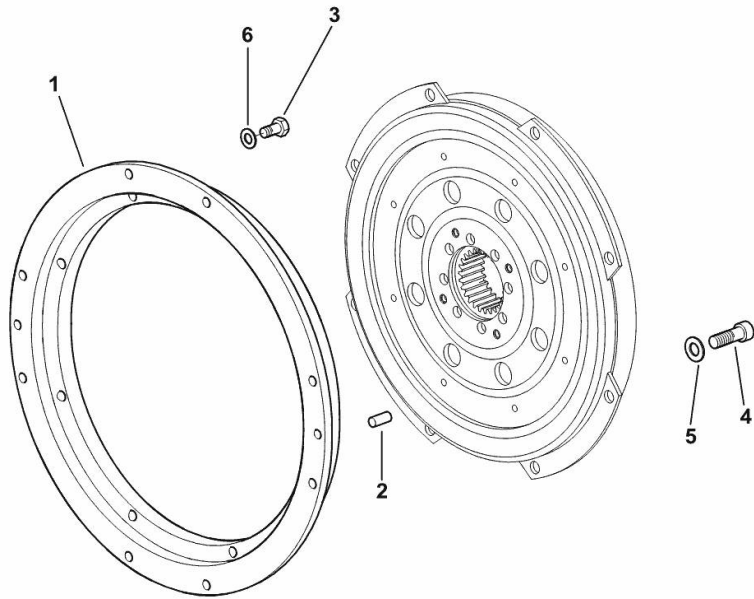
K9\_J2527\_01\_0-A-001

**DAMPING COUPLING**

Fig.	P/n	QTY	Name
------	-----	-----	------

Notes:  
[IRON<sup>3</sup> 220 DCR]

1	0.013.6141.0/10	1	flange
2	2.1630.711.0	2	pin
3	2.0112.209.2	8	screw m 8 p 1.25 x 25
4	2.0312.306.2	8	screw m 10 p.1.5 x 20
5	2.1480.015.2	8	washer 10
6	2.1475.002.2	8	conical washer 8



K9\_B3927\_01\_0-A-001

**<https://www.ebooklibonline.com>**

Hello dear friend!

Thank you very much for reading.

Enter the link into your browser.

The full manual is available for immediate download.

**<https://www.ebooklibonline.com>**