

DIFFERENTIAL - 2097 004 010

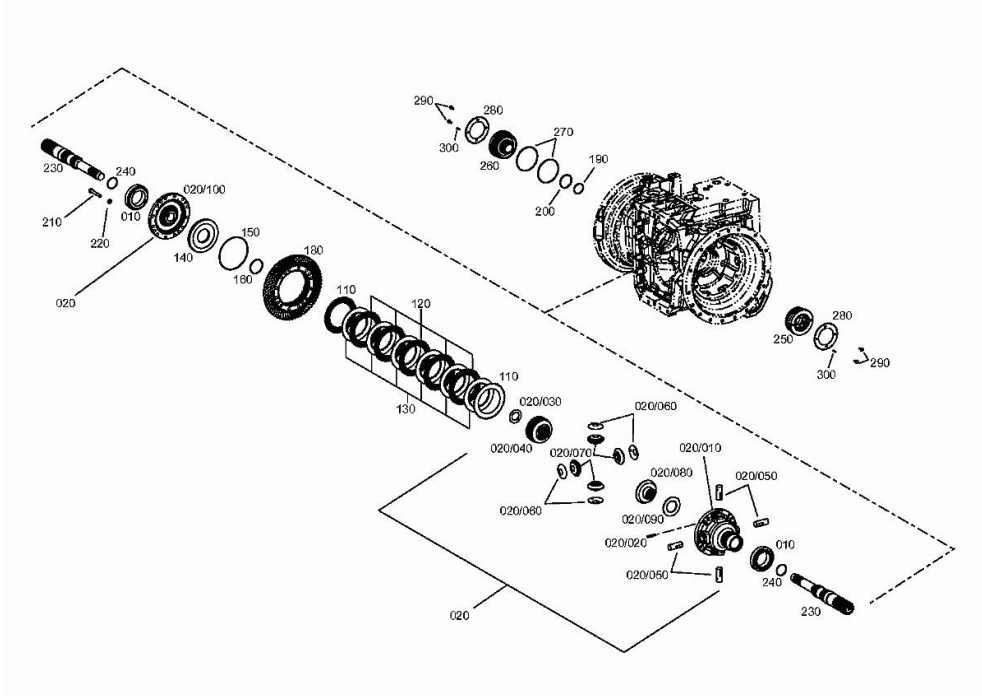


Fig.	P/n	QTY	Name
10	0.010.3580.1	2	roller bearing
20	0.900.1391.0	1	differential carrier
20.10	0.900.1234.7	1	box
20.20	0.010.2888.2	4	pin 8 x 50
20.30	0.900.0124.0	1	slewing ring
20.40	0.010.2942.2	1	crown wheel
20.50	0.010.2890.1	4	pin
20.60	0.010.3845.2	4	slewing ring
20.70	0.010.3846.0	4	planet gear
20.80	0.010.2891.1	1	crown wheel Z = 18
20.90	0.900.0124.3	1	slewing ring
20.100	0.900.1234.9	1	cover
110	0.900.1377.4	2	disc Z = 46
120	0.900.1226.8	5	disc Z = 46
130	0.900.1377.2	6	disc Z = 41
140	0.900.0123.6	1	piston
150	0.900.0451.5	1	oil seal
160	0.900.0268.5	1	oil seal 69 x 3
180	0.900.1235.0	1	crown wheel
190	0.900.0800.7	1	ring 55 x 2.5
200	0.900.0800.8	1	ring 70 x 3.0
210	0.010.3729.2	16	screw m 12 x 80
220	0.900.0277.9	16	washer
230	0.900.1235.1	2	pinion
240	0.010.2970.1	2	gasket
250	04428944	1	register
260	04428945	1	register
270	0.900.0278.7	2	ring
280	04417449	2	plate
290	04435695	4	screw m 8 x 16
300	04435703	2	pin 5 x 20

P.T.O. - POWER TAKE OFF - 2097 004 010

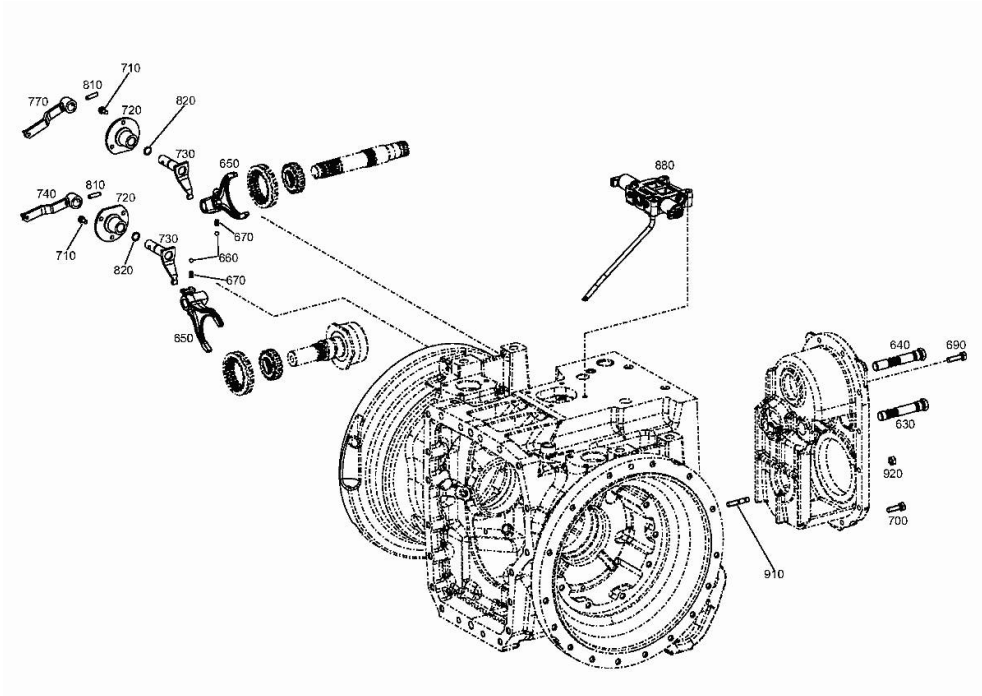
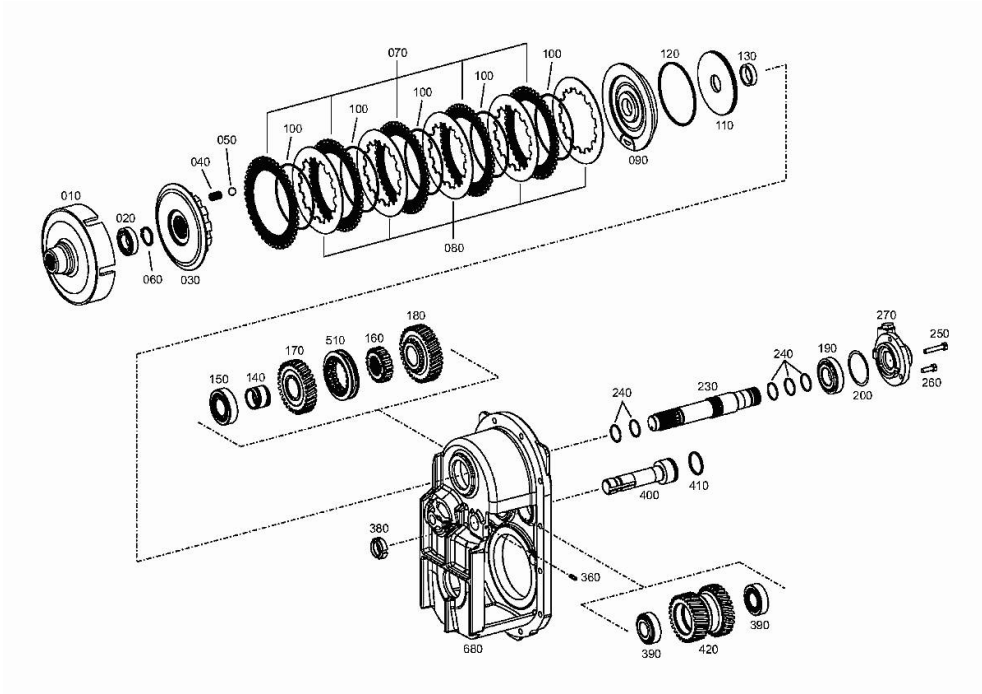


Fig.	P/n	QTY	Name
630	0.900.1432.6	1	rod
640	0.900.1432.7	1	rod
650	0.010.3848.1	2	fork
660	04415909	2	ball
670	04417378	2	spring
680	04423799	1	box
690	0.010.2893.2	1	screw m 10 x 40
700	04434540	9	screw m 10 x 35
710	04435695	6	screw m 8 x 16
720	04417692	2	bearing
730	04417693	2	pin
740	0.900.0122.9	1	lever
770	04413418	1	lever
810	0.010.2894.1	2	pin 8 x 30
820	0.900.0278.8	2	oil seal
880	0.900.1235.9	1	spool valve
910	0.900.0281.2	2	stud bolt m 10 x 45

P.T.O. - POWER TAKE OFF - 2097 004 010

Fig.	P/n	QTY	Name
10	0.900.0124.5	1	clutch housing Z = 46
20	0.900.0469.0	1	ball bearing
30	0.900.0802.8	1	adapter
40	04417631	8	spring
50	04417632	8	ball
60	0.900.0467.7	1	circlip 34x2.5
70	0.900.1377.3	5	disc Z = 46
80	0.900.1226.7	5	disc
90	0.900.1235.2	1	cylinder
100	0.900.1431.4	5	spring
110	0.900.1235.3	1	piston
120	0.900.0468.4	1	oil seal 120x3
130	04417638	1	shoulder ring
140	04417639	1	special bushing
150	0.900.1385.1	1	bearing
160	04417641	1	support
170	0.900.1235.4	1	gear
180	04436292	1	gear Z = 35
190	0.900.1385.0	1	bearing
200	04417360	1	shim s = 0.10
200	04417361	1	shim s = 0.15
200	04417362	1	shim s = 0.40
230	0.900.1235.5	1	shaft
240	04423359	5	ring
250	0.900.0280.0	1	screw m 8 x 45
260	04434498	2	screw m 8 x 25
270	0.900.1235.6	1	cover
360	04433234	2	roll pin 6x20
380	04424372	1	ring nut
390	04431639	2	bearing
400	04417656	1	pin
410	0.900.0468.6	1	oil seal 40x3
420	0.900.1235.7	1	gear
510	04431727	2	sleeve
680	04423799	1	box



<https://www.ebooklibonline.com>

Hello dear friend!

Thank you very much for reading.

Enter the link into your browser.

The full manual is available for immediate download.

<https://www.ebooklibonline.com>

P.T.O. - POWER TAKE OFF - 2097 004 010

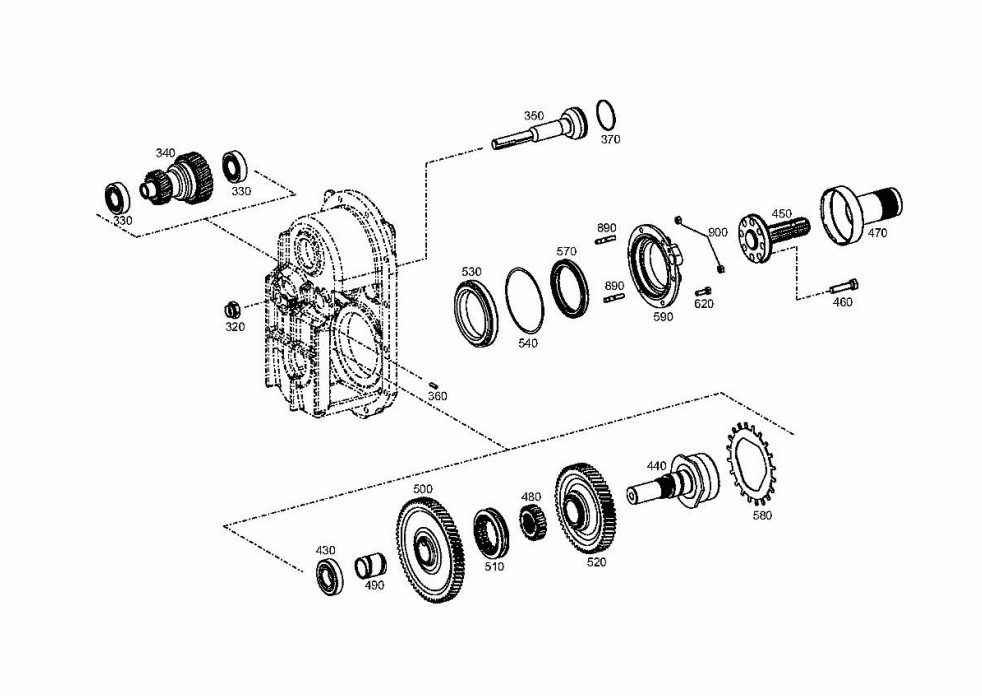


Fig.	P/n	QTY	Name
320	0.900.0124.8	1	ring nut
330	04431639	2	bearing
340	0.900.0451.9	1	gear z=19 z=30
350	04417652	1	pin
360	04433234	2	roll pin 6x20
370	0.900.0468.3	1	oil seal 57x2
380	04424372	1	ring nut
430	0.900.1385.0	1	bearing
440	0.900.0802.5	1	shaft Z = 18
450	04417388	1	shaft
460	0.010.3293.0	8	screw m 12 x 50
470	04417440	1	guard
480	04417641	1	support
490	04417681	1	special bushing
500	0.900.0884.4	1	gear z=66
510	04431727	2	sleeve
520	0.900.0877.3	1	gear z=56
530	0.900.0282.9	1	roller bearing
540	04417391	1	shim s = 0.10
540	04417392	1	shim s = 0.15
540	04417393	1	shim s = 0.40
570	04417395	1	oil seal 94x118x12
580	0.900.1432.0	1	gear
590	04417438	1	cover
620	04434498	2	screw m 8 x 25
890	0.900.0281.3	4	stud bolt m 8 x 35
900	0.900.0281.5	4	nut m 8

REAR AXLE - 2097 004 010

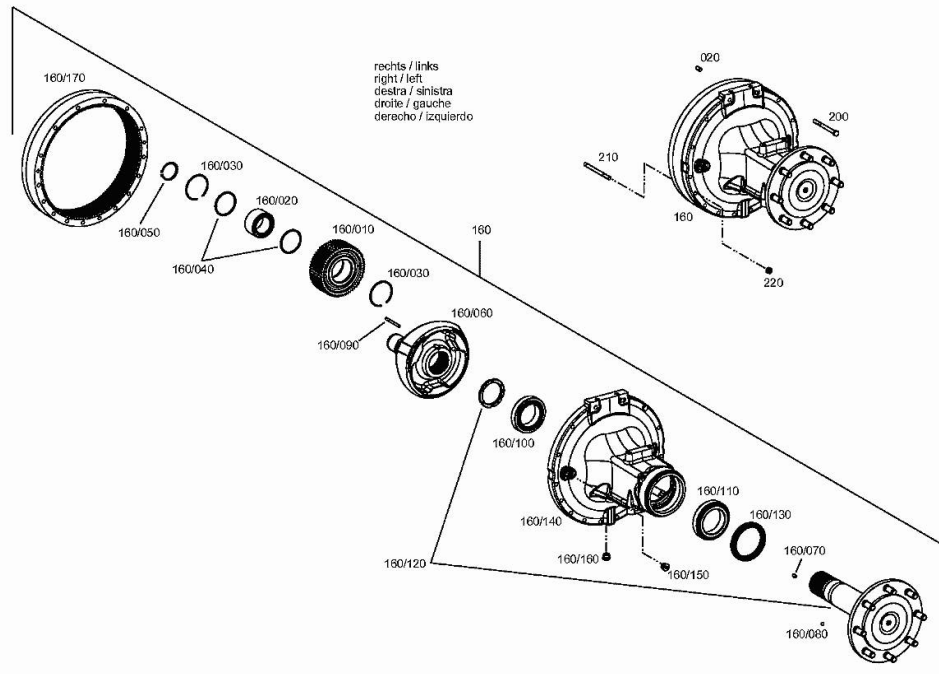
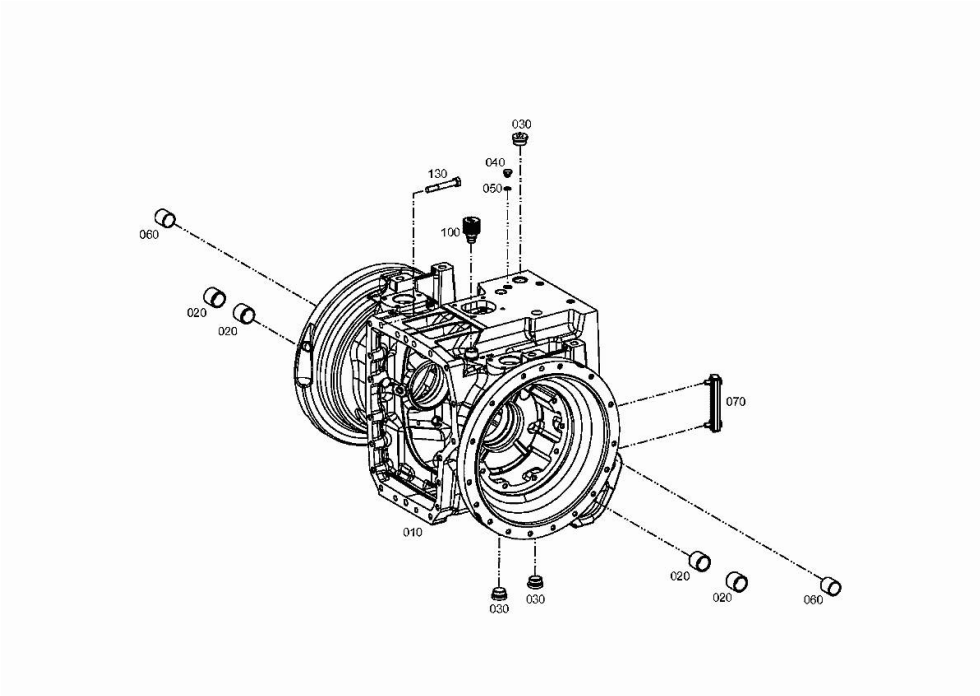


Fig.	P/n	QTY	Name
20	0.900.0278.2	2	pin 12 x 24
160	0.900.1620.3	2	wheel support
160.10	0.900.1236.1	3	crown wheel
160.20	0.900.1236.2	3	bearing
160.30	0.900.1236.3	6	circlip
160.40	0.900.1236.4	6	ring
160.50	0.900.1236.5	3	circlip
160.60	0.900.1236.6	1	spider
160.70	0.010.3588.2	1	grub screw m 10x16
160.80	04309268	1	ball
160.90	0.900.0278.3	1	roll pin 8x90
160.100	0.900.1236.7	1	bearing
160.110	0.900.1236.8	1	bearing
160.120	0.900.1620.2	1	shaft
160.130	0.010.3642.2	1	ring
160.140	0.900.1237.4	1	ring
160.150	0.900.0001.8	2	plug
160.160	0.010.3849.0	1	plug
160.170	0.900.1237.5	1	crown wheel
200	0.900.0469.3	28	screw m 12x140
210	0.900.0456.5	4	screw m 12x150
220	0.900.0281.4	4	nut m 12

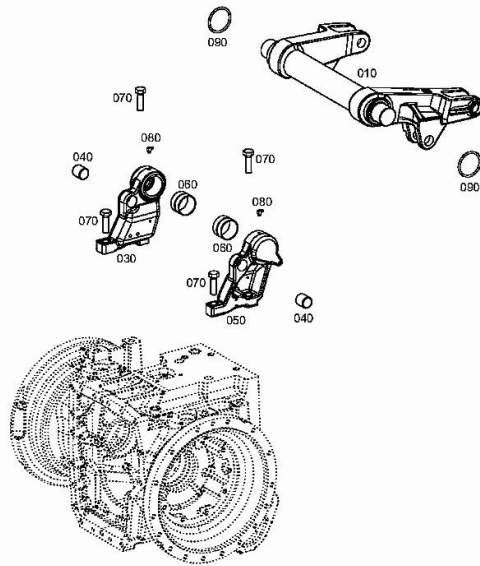
REAR GEARBOX CASE - 2097 004 010

Fig.	P/n	QTY	Name
10	0.900.1237.7	1	gear box
20	0.900.1237.8	4	bushing
30	0.900.1445.1	3	plug m 33x2
40	0.900.0281.0	1	plug m 14 p.1.5
50	04423731	1	oil seal 14 x 18
60	04417451	2	bushing
70	0.900.1237.9	1	level indicator
100	0.900.1238.0	1	valve
130	0.900.1448.9	1	screw



LIFTING - 2097 004 010

Fig.	P/n	QTY	Name
10	0.900.0883.4	1	shaft
30	0.900.1407.9	1	bearing block dx/rh/re
40	0.900.1431.3	2	bearing
50	0.900.1408.0	1	bearing block sx/lh/li
60	04417549	2	special bushing
70	0.900.0469.1	4	screw m 20x65
80	04427636	2	grease gun m 8 p.1 x 8
90	04417552	2	ring 78.5x6



OIL SUPPLY - 2097 004 010

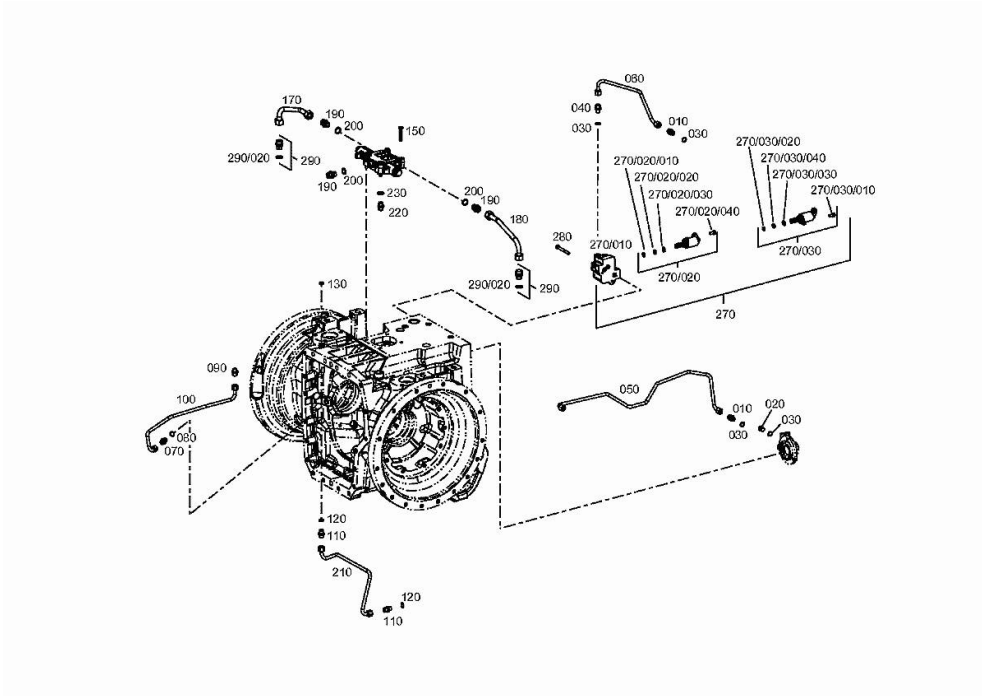
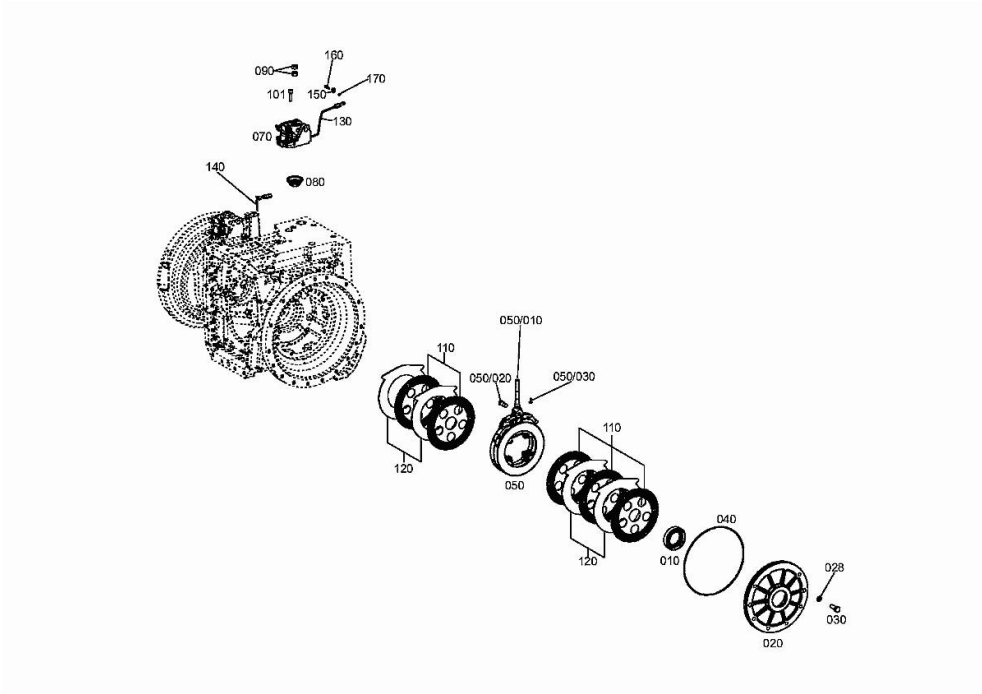


Fig.	P/n	QTY	Name
10	04417466	2	pipe fitting
20	0.900.0280.7	1	stop
30	04423731	4	oil seal 14 x 18
40	04417466	1	pipe fitting
50	0.900.1238.2	1	tube
60	0.900.1238.3	1	tube
70	04417466	1	pipe fitting
80	04423731	1	oil seal 14 x 18
90	04417705	1	vent
100	0.900.1238.4	1	tube
110	04417466	2	pipe fitting
120	04423731	2	oil seal 14 x 18
130	0.900.1238.5	1	plug
150	0.900.1238.6	4	screw m 8 x 50
160	0.900.0885.3	1	gasket
170	0.900.1238.7	1	tube
180	0.900.1238.8	1	tube
190	0.900.0282.3	3	pipe union
200	0.900.0985.0	3	oil seal 18 x 24
210	0.900.1238.9	1	tube
220	04417466	1	pipe fitting
230	04423731	1	oil seal 14 x 18
270	0.900.1239.0	1	valve
270.10	0.900.1239.1	1	valve body
270.20	0.900.0952.8	1	solenoid valve DV
270.20.10	0.900.1377.5	1	gasket 12,4 x 1,78
270.20.20	0.900.1377.6	1	gasket 13 x 1.5
270.20.30	0.900.1377.7	1	gasket 14x1.78
270.20.40	0.900.1377.8	1	screw m 8 x 16
270.30	0.900.1239.2	1	solenoid valve EV
270.30.10	0.900.1377.8	1	screw m 8 x 16
270.30.20	0.900.1377.7	1	gasket 14x1.78
270.30.30	0.900.1498.3	1	oil seal 17x1.8
270.30.40	0.900.1566.6	1	oil seal 16x1.8
280	0.900.1239.3	2	screw m 8 x 70
290	0.900.1392.0	2	pipe fitting
290.20	0.900.1239.4	1	oil seal 15.3x2.4

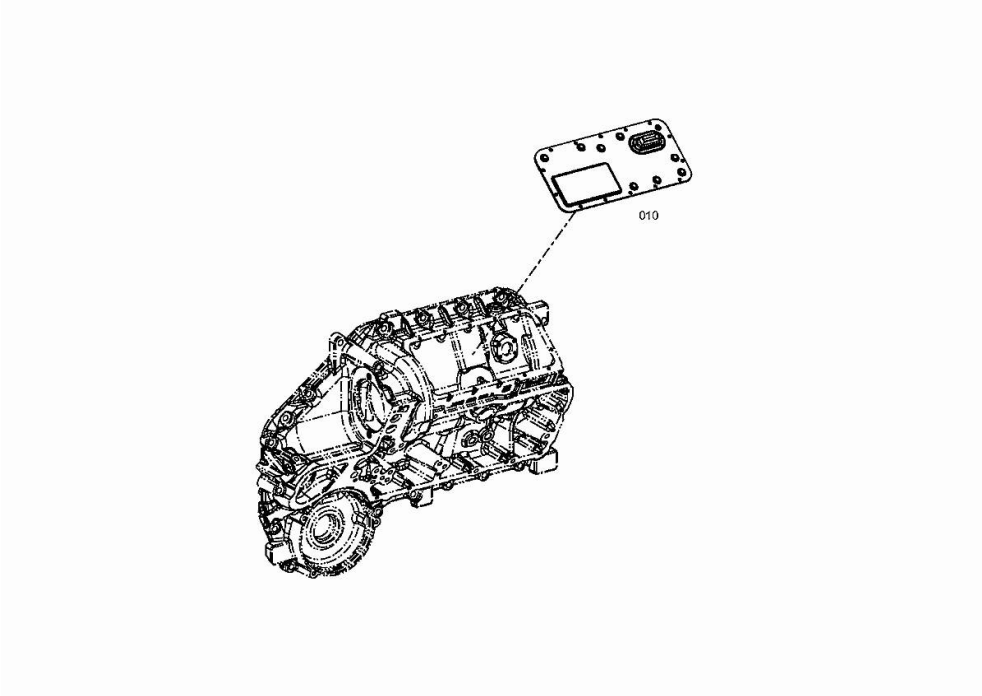
REAR BRAKES - 2097 004 010

Fig.	P/n	QTY	Name
10	04417316	2	oil seal
20	0.900.1239.5	2	cover
28	0.900.0277.9	4	washer
30	0.900.0279.7	16	screw m 12 x 40
40	04428220	2	oil seal 305x4
50	0.900.0800.4	2	transmission brake
50.10	04428551	1	rod
50.20	04435740	1	pin
50.30	04435741	1	split pin
70	0.900.0800.5	2	operation
80	0.900.0800.9	2	rubber bushing
90	04434557	4	nut m 14 p.1.5
101	0.900.0469.7	6	screw m 10 x 40
110	0.900.0801.2	10	disc
120	0.900.0801.3	8	disc
130	04428545	1	tube sx/lh/li
140	04428546	1	piping dx/rh/re
150	0.900.0468.2	2	clamp 6x12
160	0.900.0280.1	2	screw m 5 x 25
170	0.900.0470.2	2	nut m 5



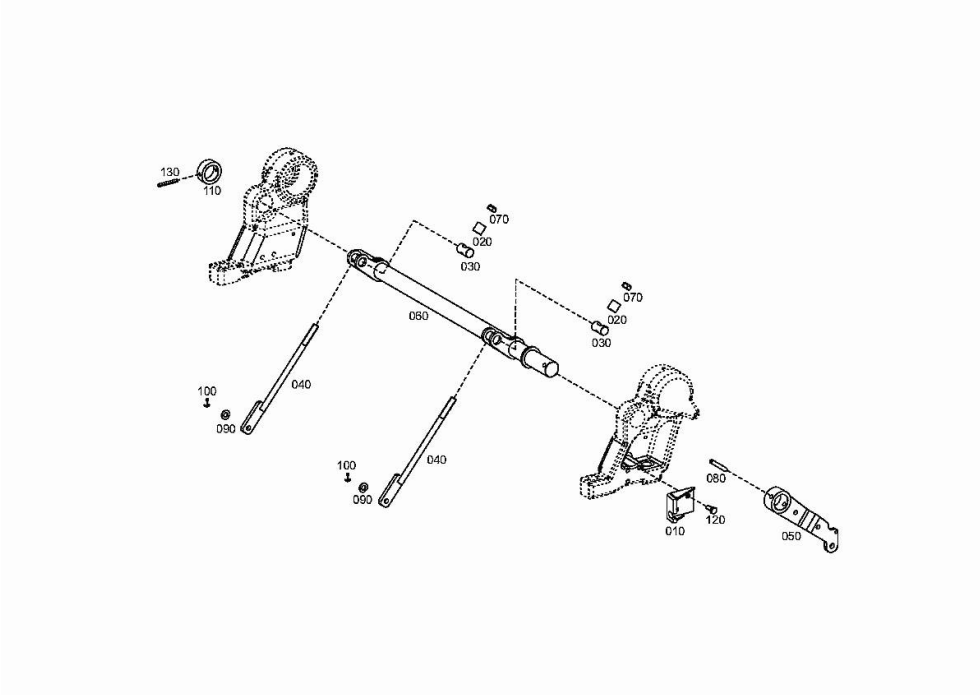
TRANSMISSION CONTROL UNIT - 2097 004 010

Fig.	P/n	QTY	Name
10	0.900.1253.6	1	control



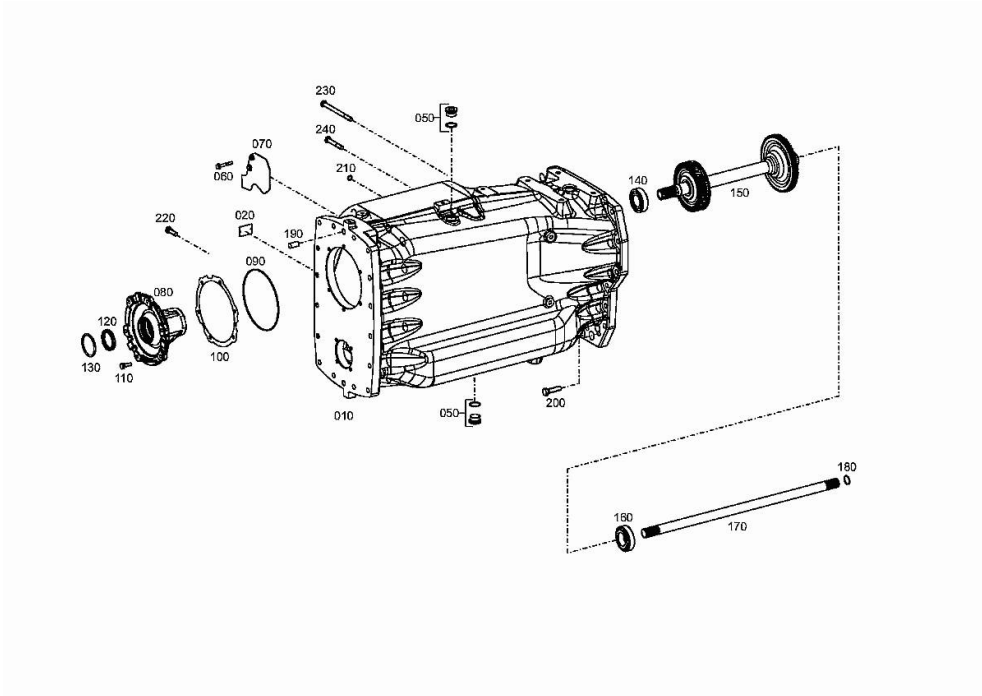
BRAKE CONTROLS - 2097 004 010

Fig.	P/n	QTY	Name
10	0.900.1239.7	1	bracket
20	0.900.1239.8	2	tube
30	0.900.1239.9	2	pin
40	0.900.1240.0	2	rod
50	0.900.1240.1	1	lever
60	0.900.1240.2	1	shaft
70	0.900.0281.9	2	nut m 12
80	0.010.3459.1	1	roll pin
90	0.900.0466.9	2	washer
100	0.900.0468.1	2	split pin 3.2x18
110	0.900.1240.3	1	spacer
120	0.900.0469.4	3	screw m 8 p.1.25 x 20
130	0.010.2901.1	1	pin 6x50



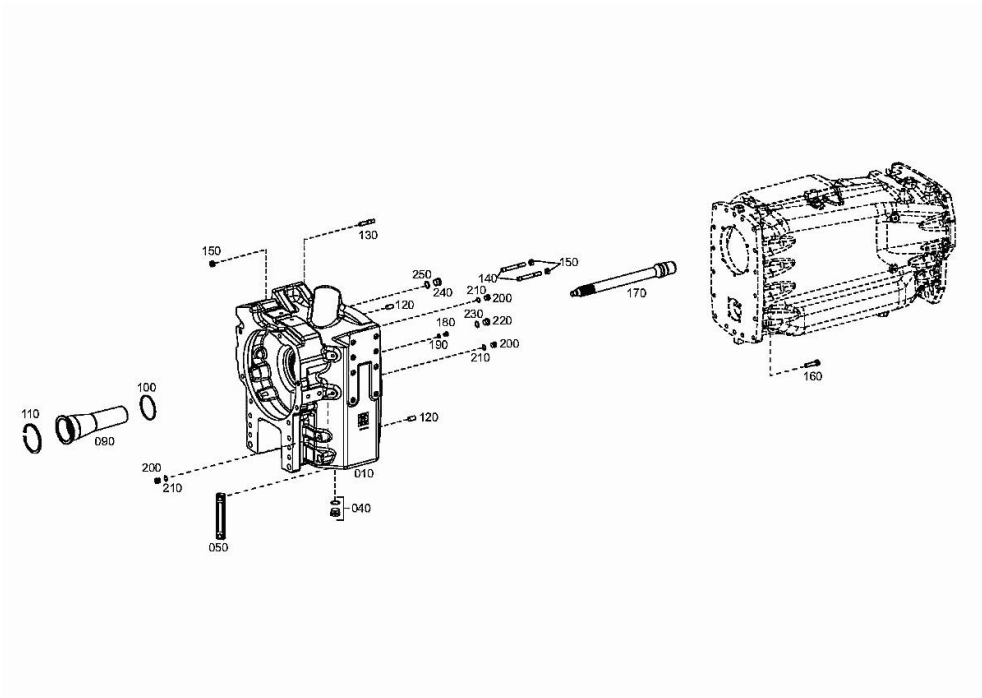
GEARBOX - 2097 004 009

Fig.	P/n	QTY	Name
10	0.900.1218.8	1	gear box
20	0.900.0482.2	1	plate
50	0.900.1445.1	2	plug m 33x2
60	0.900.1444.6	2	screw m 8 x 50
70	0.900.1219.1	1	plate
80	0.900.1391.4	1	flange
90	0.900.1219.2	1	oil seal
100	0.900.1219.3	1	shim mm = 0.1
100	0.900.1219.5	1	shim mm = 0.15
100	0.900.1219.6	1	shim mm = 0.4
100	0.900.1219.7	1	shim mm = 0.6
100	0.900.1219.8	1	shim mm = 0.8
110	0.900.1444.0	6	screw m 10 x 30
120	0.900.1219.9	1	gasket
130	0.900.1220.0	1	oil seal
140	0.900.1220.1	1	bearing
150	0.900.1220.2	1	shaft
160	0.900.1220.3	1	bearing
170	0.900.1220.4	1	shaft
180	0.010.2863.1	1	circlip 30
190	0.900.1220.5	2	cylindrical plug
200	0.900.1444.3	19	screw m 14 x 55
210	0.900.1220.7	3	oil seal 11 x 3
220	0.010.2885.1	19	screw m 12 x 40
230	0.900.1443.8	1	screw m 12 x 160
240	0.010.3729.2	1	screw m 12 x 80



JUNCTION CASE - 2097 004 009

Fig.	P/n	QTY	Name
10	0.900.1567.7	1	box
40	0.900.1445.1	2	plug m 33x2
50	0.900.1221.2	1	level indicator
90	0.900.1221.3	1	tube
100	0.900.1221.4	1	oil seal 102 x 6
110	0.900.1221.5	1	circlip 125x4
120	0.900.1220.5	2	cylindrical plug
130	0.900.1445.8	4	grub screw m 14 x 55
140	0.900.1445.9	2	grub screw m 14x100
150	0.900.1618.7	6	nut m14
152	0.900.1377.9	1	adhesive
160	0.900.1444.3	10	screw m 14 x 55
170	0.900.1221.9	1	shaft
180	0.900.1222.0	1	plug
190	0.900.1222.1	1	gasket
200	0.900.0291.5	3	plug
210	0.010.2898.2	3	gasket 18x22
220	0.010.2622.3	2	screw m 22 x 1.5
230	01118737	2	oil seal 22 x 27
240	0.010.2622.1	1	screw m 26 p.1.5
250	0.010.2899.0	1	gasket 26x31





Suggest:

For more complete manuals. Please go to the home page.

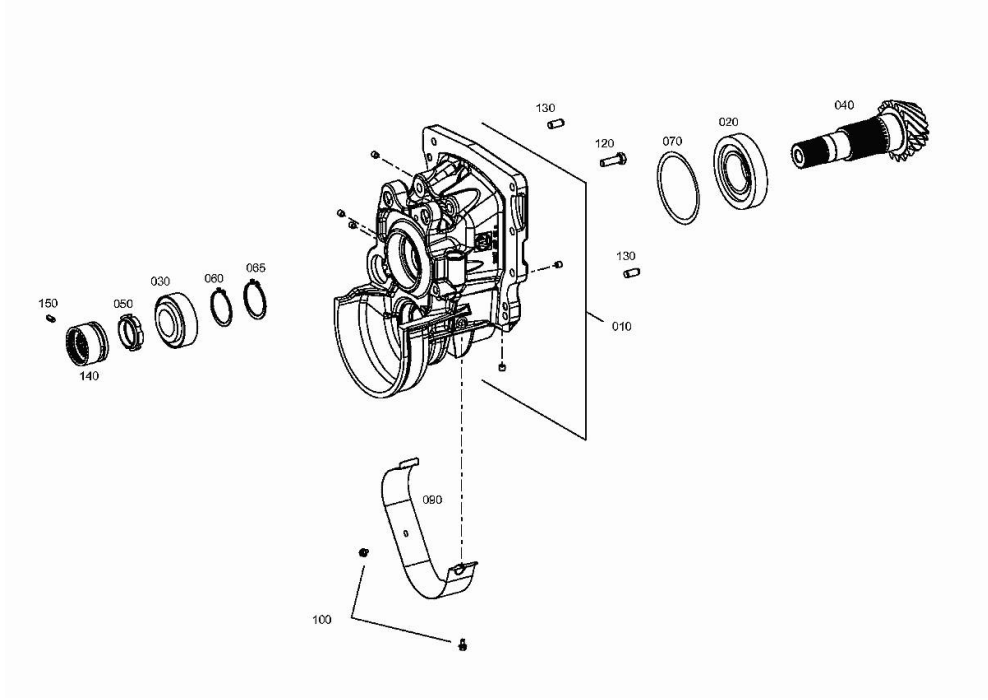
<https://www.ebooklibonline.com>

If the above button click is invalid. Please download this document first, and then click the above link to download the complete manual.

Thank you so much for reading

FLANGE - 2097 004 009

Fig.	P/n	QTY	Name
10	0.900.1447.8	1	box
20	0.900.1222.3	1	bearing
30	0.900.1222.4	1	bearing
40	0.900.1567.6	1	pinion Z = 14
50	0.900.1222.6	1	ring nut
60	0.900.1222.7	1	circlip 63x2
65	0.900.1222.8	1	circlip 63x2.5
70	0.900.1222.9	1	shim mm = 1.10
70	0.900.1223.0	1	shim mm = 1.15
70	0.900.1223.1	1	shim mm = 1.20
70	0.900.1223.2	1	shim mm = 1.25
70	0.900.1223.3	1	shim mm = 1.30
70	0.900.1223.4	1	shim mm 1.35
70	0.900.1223.5	1	shim mm = 1.40
70	0.900.1223.6	1	shim mm = 1.45
70	0.900.1223.7	1	shim mm 1.50
70	0.900.1223.8	1	shim mm = 1.55
70	0.900.1223.9	1	shim mm = 1.60
70	0.900.1224.0	1	shim mm = 1.65
70	0.900.1224.1	1	shim mm = 1.70
90	0.900.1447.7	1	cover
100	0.900.1444.9	2	screw m 6 x 12
120	0.010.2885.1	8	screw m 12 x 40
130	0.900.1224.5	2	cylindrical plug
140	0.900.1224.6	1	sleeve
150	0.900.1224.7	1	pin 8x20



IRON 190 CONTINUO DCR -> 10001

Section: D0 - TRANSMISSION

Ref: 0.018.3467.4

TRANSMISSION - 2097 004 009

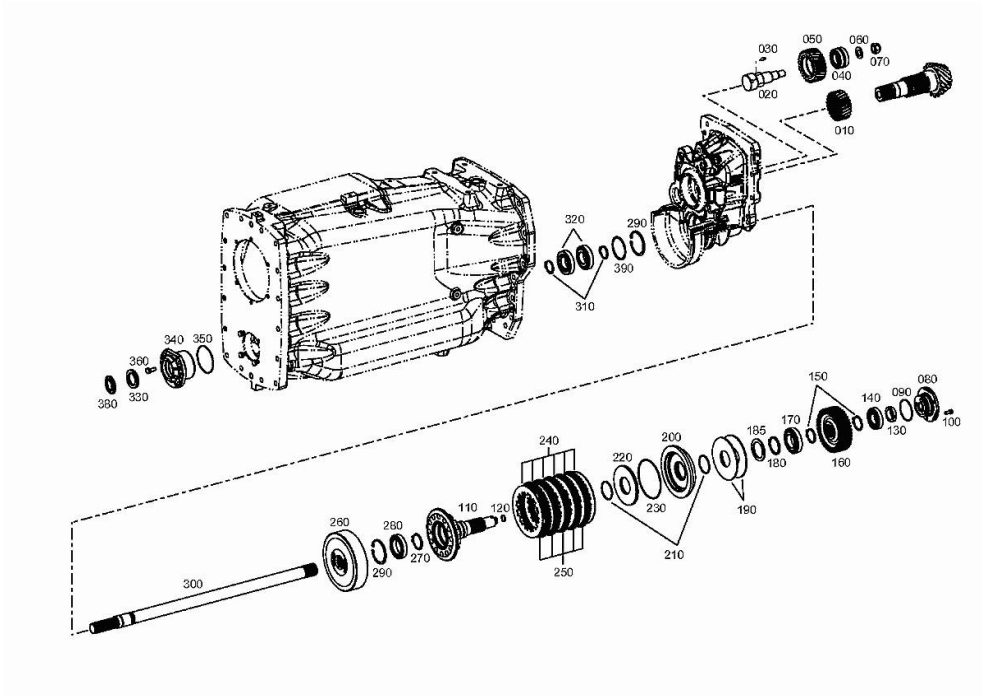


Fig.	P/n	QTY	Name
10	0.900.1568.1	1	gear wheel Z = 23
20	0.900.1224.9	1	pinion
30	0.900.1224.7	1	pin 8x20
40	0.900.1225.0	1	bearing
50	0.900.1567.9	1	gear wheel Z = 28
60	0.900.1443.3	1	disc
70	0.900.1446.1	1	nut m 20 x 1.5
80	0.900.1225.4	1	cover
90	0.900.1225.5	1	ring
100	0.900.0469.4	3	screw m 8 p.1.25 x 20
110	0.900.1520.4	1	flange
120	0.900.1225.7	1	gasket
130	0.900.1225.8	1	nut
140	0.900.0279.2	1	roller bearing
150	0.900.1225.9	2	circlip
160	0.900.1568.0	1	gear wheel Z = 41
170	0.900.1226.1	1	bearing
180	0.010.3075.1	1	ring 55x3
185	0.900.1618.8	1	shim mm 3.20
185	0.900.1618.9	1	shim mm 3.30
185	0.900.1619.0	1	shim mm 3.40
185	0.900.1619.1	1	shim mm 3.50
185	0.900.1619.2	1	shim mm 3.60
185	0.900.1619.3	1	shim mm 3.70
185	0.900.1619.4	1	shim mm 3.80
185	0.900.1619.5	1	shim mm 3.90
185	0.900.1619.6	1	shim mm 4.00
185	0.900.1619.7	1	shim mm 4.10
185	0.900.1619.8	1	shim mm 4.20
190	0.900.1226.3	2	cap-washer
200	0.900.1226.4	1	cylinder
210	0.010.3466.0	2	oil seal 57 x 3
220	0.900.1226.5	1	piston
230	0.900.1226.6	1	oil seal
240	0.900.1226.7	6	disc
250	0.900.1226.8	5	disc Z = 46
260	0.900.1226.9	1	clutch assy
270	0.010.3345.1	1	circlip 50x2
280	0.900.1227.0	1	bearing
290	01107855	2	circlip 80 x 2.5
300	0.900.1391.5	1	shaft z=18
310	0.010.2876.2	2	circlip 40x2.5
320	04415697	2	roller bearing
330	0.900.1566.8	1	oil seal 40x62x7

<https://www.ebooklibonline.com>

Hello dear friend!

Thank you very much for reading.

Enter the link into your browser.

The full manual is available for immediate download.

<https://www.ebooklibonline.com>