

Section: GEAR

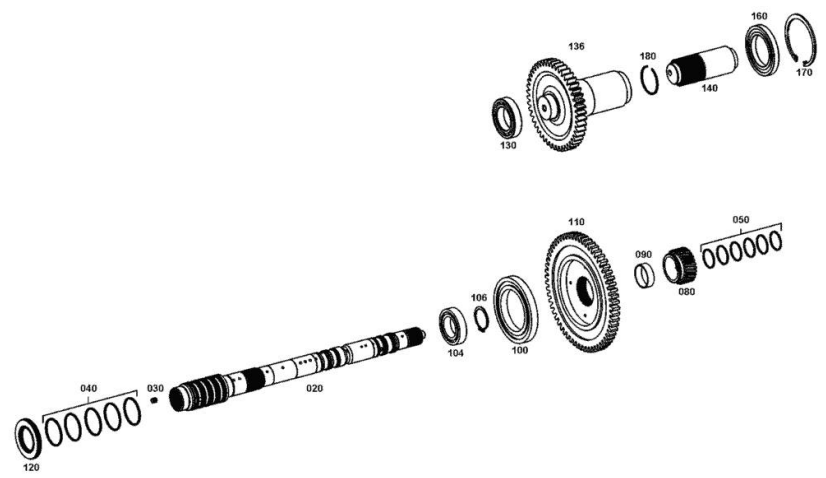
**GEARBOX INPUT SHAFT**

Fig.	P/n	QTY	Name
------	-----	-----	------

**Notes:**

[IRON 165.7 CONTINUO]

20	0.900.0482.4	1	shaft Z = 24
30	0.900.0120.7	4	plug
40	0.900.0387.4	5	ring
50	0.900.0387.5	6	ring
80	0.010.3765.1	1	crown wheel z = 33
90	0.010.3722.2	1	bush
100	0.900.0481.5	1	ball bearing
104	0.010.3729.1	1	ball bearing
106	0.010.3724.2	1	circlip 40 x 1.75
110	0.900.0482.3	1	gear z=61
120	0.010.3292.2	1	special oil seal
130	04415947	1	bearing
136	0.010.3766.0	1	gear Z = 46
140	0.010.3765.2	1	shaft Z = 38
160	0.010.3757.2	1	ball bearing
170	0.010.2610.0	1	circlip 95x3
180	0.010.3726.2	1	ring JV 50



Section: GEAR  
**HYDRAULIC CONTROL**

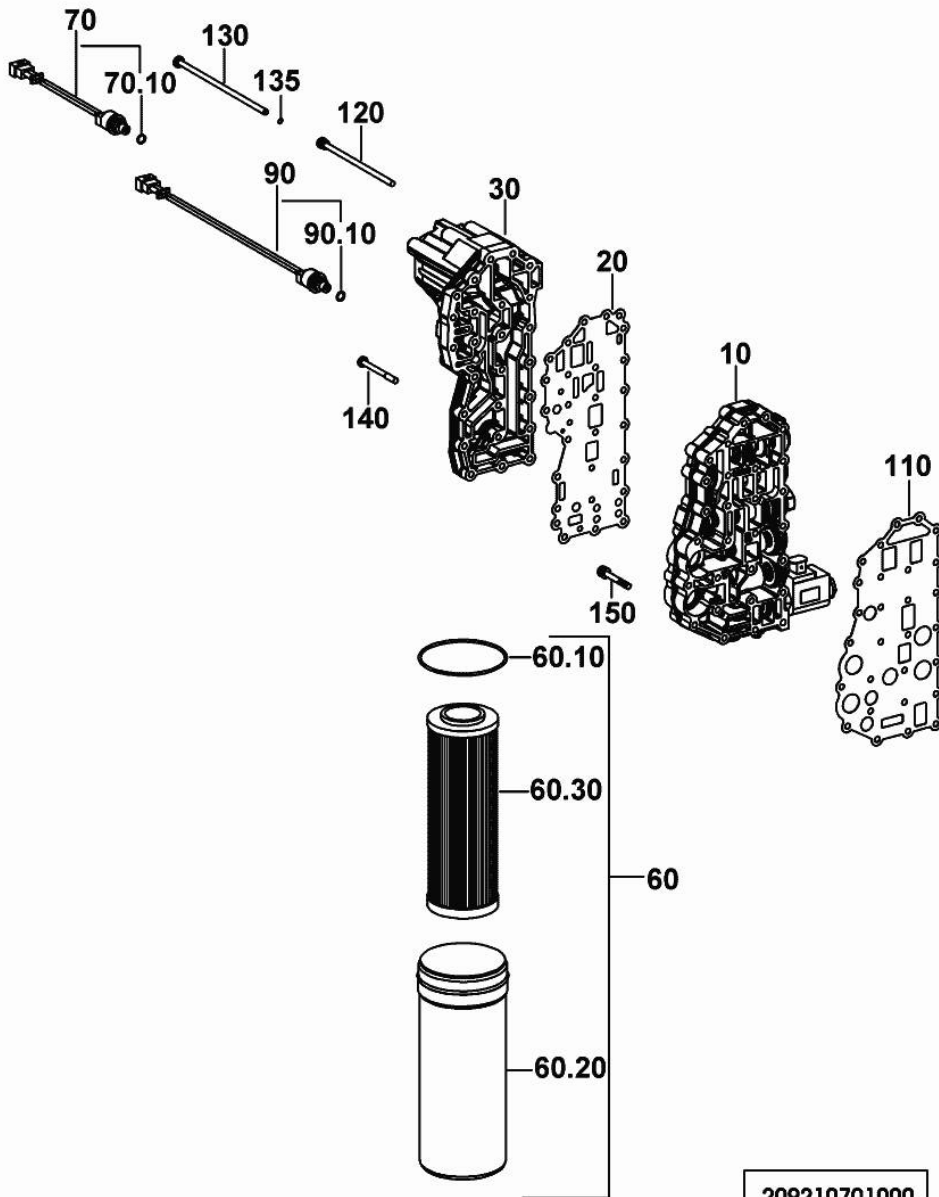


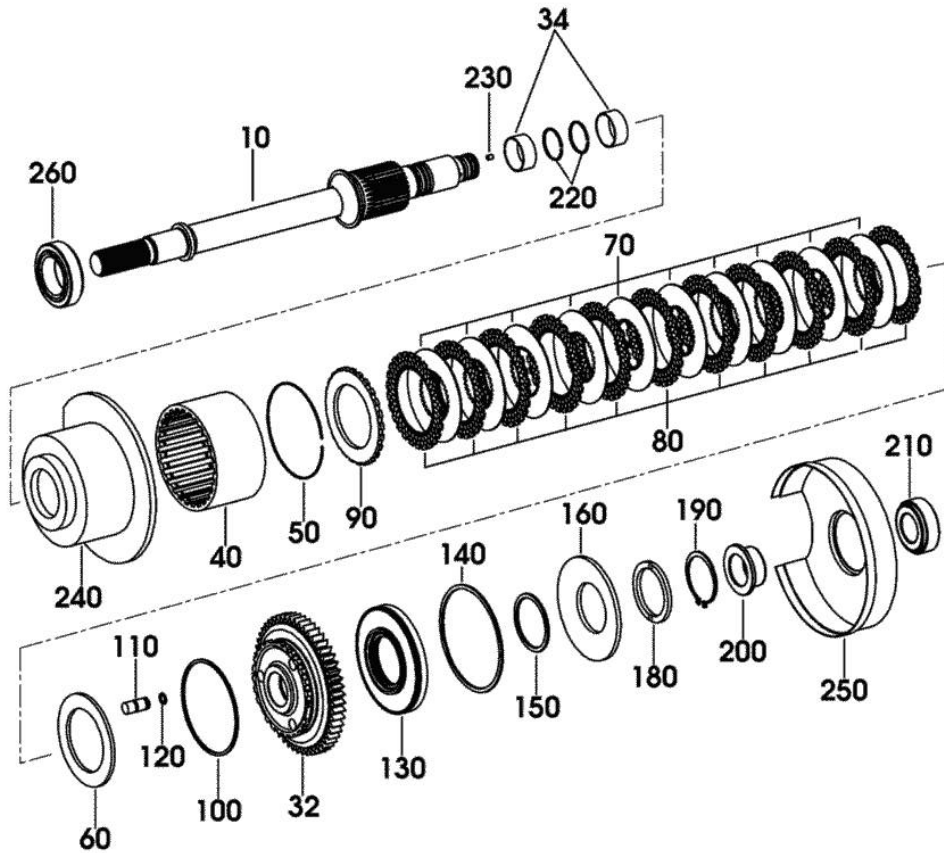
Fig.	P/n	QTY	Name
------	-----	-----	------

Notes:  
 [IRON 165.7 CONTINUO]

10	0.010.3762.1	1	hydr. control
20	0.900.0500.7	1	gasket
30	0.900.0482.5	1	plate
60	0.010.3720.2	1	filter
60.10	0.010.3295.1	1	oil seal 94.92 x 2.62
60.20	0.010.3295.2	1	box
60.30	0.900.0462.8	1	filter
70	04416706	1	pressure switch
70.10	04415683	1	oil seal 8x1.5
90	0.010.3720.1	1	switch
90.10	04415683	1	oil seal 8x1.5
110	0.900.0466.6	1	gasket
120	0.010.3296.2	2	screw m 6x140
130	0.010.3755.0	2	screw m 6x175
135	0.010.3297.2	2	washer 6.4
140	0.010.3298.0	21	screw m 6 x 70
150	0.010.3298.1	3	screw m 6 x 50
160	0.010.3753.1	1	stop

Section: GEAR

**FRONT TRANSMISSION**



209214600101

Fig.	P/n	QTY	Name
------	-----	-----	------

Notes:

[IRON 165.7 CONTINUO]

10	0.010.3768.0	1	shaft Z = 32
32	0.010.3767.2	1	gear wheel z = 53
34	04434385	2	bushing
40	04416804	1	support z = 27
50	04415928	1	ring
60	0.010.2875.2	1	shim mm 7.3
60	04416588	1	shim mm 5.5
60	04416589	1	shim mm 5.7
60	04416590	1	shim mm 5.9
60	04416591	1	shim mm 6.1
60	04416592	1	shim mm 6.3
60	04416593	1	shim mm 6.5
60	04416594	1	shim mm 6.7
60	04416595	1	shim mm 6.9
60	04416596	1	shim mm 7.1
60	04416598	1	shim mm 7.5
60	04416599	1	shim mm 7.7
60	04416600	1	shim mm 7.9
60	04416601	1	shim mm 8.1
60	04416602	1	shim mm 8.3
60	04416603	1	shim mm 8.5
60	04416604	1	shim mm 8.7
70	04415930	10	disc
80	04416412	11	disc
90	04415932	1	disc
100	04415933	1	circlip mm 2.5
110	0.010.3767.1	3	pin
120	0.010.3258.2	3	oil seal 12x2.5
130	0.010.3767.0	1	piston
140	04328256	1	ring
150	04415937	1	ring
160	0.010.3723.0	1	spring
180	04436290	1	washer
190	0.010.2876.1	1	circlip 68x2.5
200	0.010.3768.1	1	bushing
210	0.010.3759.1	1	roller bearing
220	04415939	2	ring 45x2
230	04415944	1	screw m 6 x 8
240	04415945	1	plate
250	0.010.3766.2	1	plate
260	0.010.3256.1	1	roller bearing

**<https://www.ebooklibonline.com>**

Hello dear friend!

Thank you very much for reading.

Enter the link into your browser.

The full manual is available for immediate download.

**<https://www.ebooklibonline.com>**

Section: GEAR  
**FRONT TRANSMISSION**

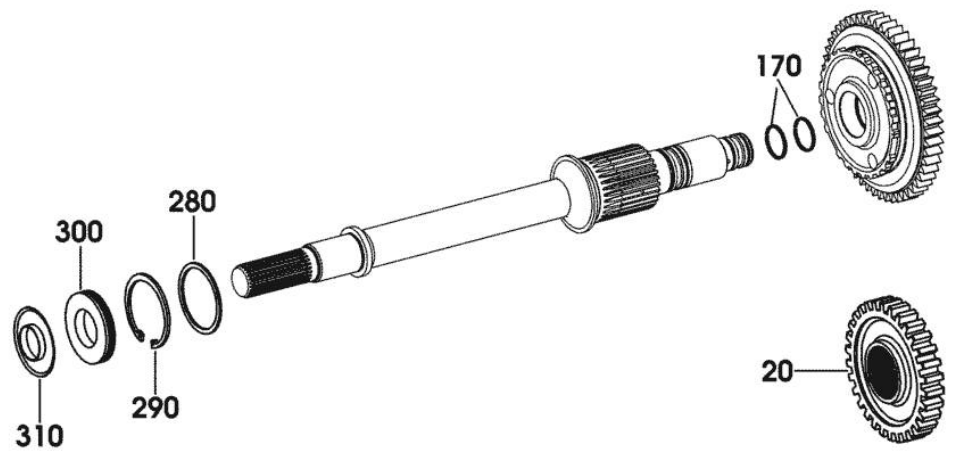


Fig.	P/n	QTY	Name
------	-----	-----	------

Notes:  
 [IRON 165.7 CONTINUO]

20	0.010.3772.0	1	gear Z = 39
170	04415761	2	ring 35x2
280	0.010.3259.0	1	washer mm 2.00
280	0.010.3259.1	1	washer mm 2.05
280	0.010.3259.2	1	washer mm 2.10
280	0.010.3260.0	1	washer mm 2.15
280	0.010.3260.1	1	washer mm 2.25
280	0.010.3260.2	1	washer mm 2.35
280	0.010.3261.0	1	washer mm 2.45
280	0.010.3261.1	1	washer mm 2.55
280	0.010.3261.2	1	washer mm 2.65
280	04417009	1	washer mm 2.20
280	04417010	1	washer mm 2.30
280	04417011	1	washer mm 2.40
280	04417012	1	washer mm 2.50
280	04417013	1	washer mm 2.60
280	04417014	1	washer mm 2.70
280	04417015	1	washer mm 2.80
280	04424426	1	washer mm 2.90
280	04424427	1	washer mm 3.00
280	04424428	1	washer mm 3.10
280	04424429	1	washer mm 3.20
290	04415949	1	circlip 75x3
300	04415950	1	oil seal
310	04415951	1	plate

209214600102

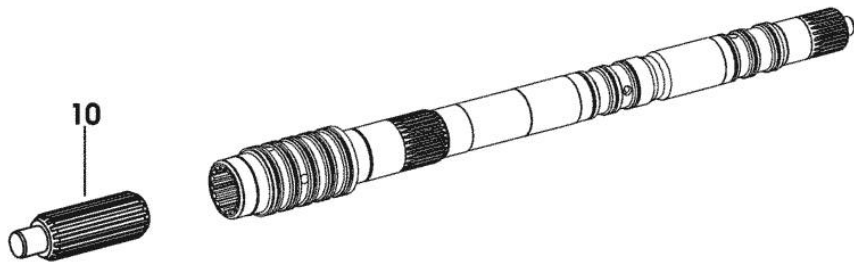
**GEARBOX INPUT SHAFT**

Fig.	P/n	QTY	Name
------	-----	-----	------

**Notes:**

[IRON 165.7 CONTINUO]

10	0.010.3291.1	1	shaft
----	--------------	---	-------



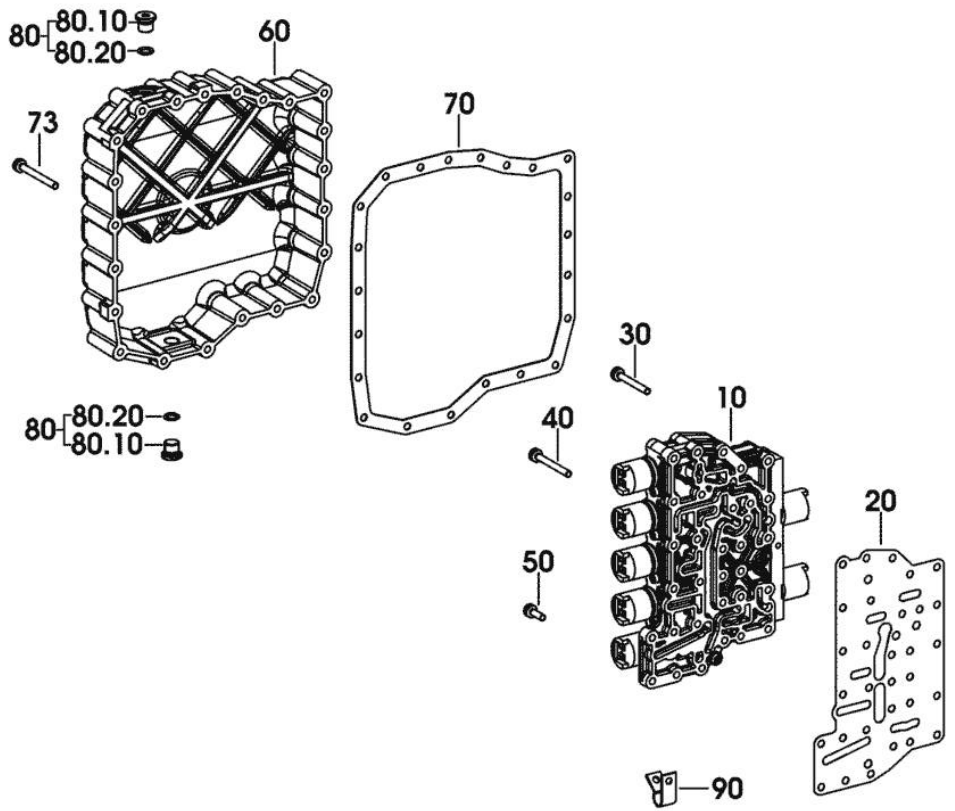
209214900100

Section: GEAR  
**HYDRAULIC CONTROL**

Fig.	P/n	QTY	Name
------	-----	-----	------

Notes:  
 [IRON 165.7 CONTINUO]

10	0.010.3762.2	1	hydr. control
20	0.010.3300.2	1	gasket
30	0.010.3298.1	27	screw m 6 x 50
40	0.010.3301.0	2	screw m 6 x 55
50	0.010.3301.1	2	screw m 6 x 20
60	0.900.0302.5	1	cap
70	0.900.0302.6	1	gasket
73	0.010.3755.1	11	screw m 6 x 60
80	0.000.0000.1		cannot be supplied
80.10	0.000.0000.1		cannot be supplied
80.20	0.000.0000.1		cannot be supplied
90	0.010.3774.0	1	clamp



209215200400

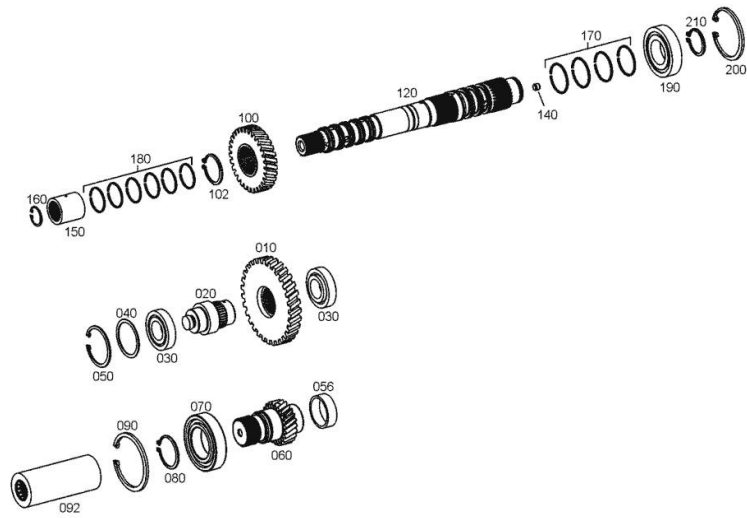
Section: GEAR

**GEARBOX INPUT SHAFT**

Fig.	P/n	QTY	Name
------	-----	-----	------

**Notes:**

[IRON 165.7 CONTINUO]



10	0.010.3770.1	1	gear Z = 49
20	0.010.3769.0	1	axle
30	04416950	2	bearing
40	0.010.2611.0	1	shim mm 1.72
40	0.010.2611.1	1	shim mm 1.74
40	0.010.2611.2	1	shim mm 1.76
40	0.010.2612.0	1	shim mm 1.78
40	0.010.2612.1	1	shim mm 1.82
40	0.010.2612.2	1	shim mm 1.84
40	0.010.2612.3	1	shim mm 1.86
40	0.010.2613.0	1	shim mm 1.88
40	0.010.2613.1	1	shim mm 1.92
40	0.010.2613.2	1	shim mm 1.94
40	0.010.2613.3	1	shim mm 1.96
40	0.010.2614.0	1	shim mm 1.98
40	0.010.2614.1	1	shim mm 2.02
40	0.010.2614.2	1	shim mm 2.04
40	0.010.2614.3	1	shim mm 2.06
40	0.900.0014.7	1	shim mm 2.08
40	0.900.0014.8	1	shim mm 1.05
40	0.900.0014.9	1	shim mm 1.10
40	0.900.0015.0	1	shim mm 1.15
40	04416454	1	shim mm 1.30
40	04416455	1	shim mm 1.70
40	04416456	1	shim mm 1.90
40	04416457	1	shim mm 2.10
40	04416458	1	shim mm 2.30
40	04416459	1	shim mm 1.20
40	04416460	1	shim mm 1.25
40	04416461	1	shim mm 1.35
40	04416462	1	shim mm 1.40
40	04416463	1	shim mm 1.45
40	04416470	1	shim mm 1.55
40	04416471	1	shim mm 1.60
40	04416472	1	shim mm 1.65
40	04416473	1	shim mm 1.75
40	04416474	1	shim mm 1.80
40	04416475	1	shim mm 1.85
40	04416476	1	shim mm 1.95
40	04416477	1	shim mm 2.00
40	04416478	1	shim mm 2.05

Section: GEAR

**GEARBOX INPUT SHAFT**

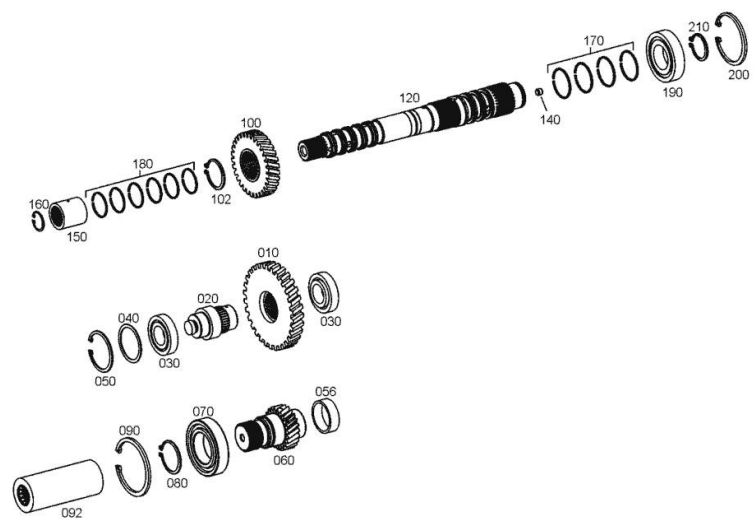
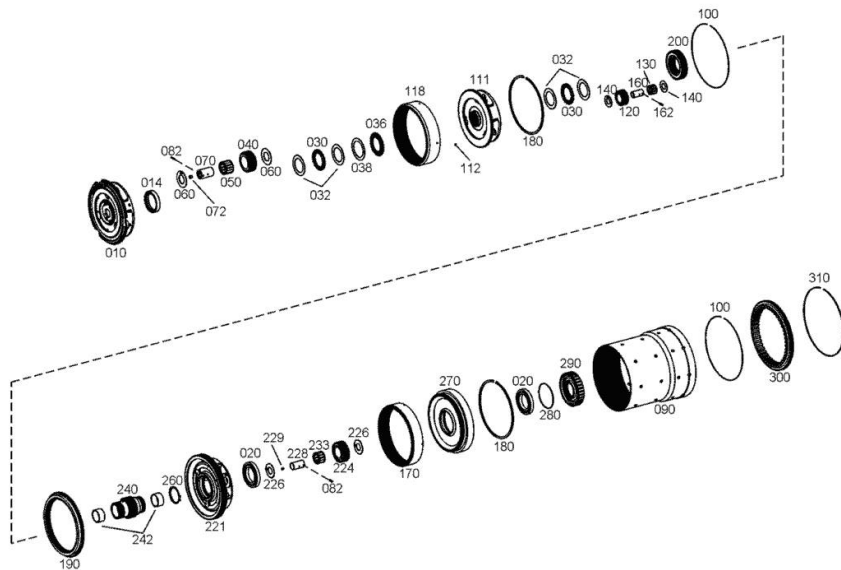


Fig.	P/n	QTY	Name
40	04416479	1	shim mm 2.15
40	04416480	1	shim mm 2.20
40	04416481	1	shim mm 2.25
40	04416482	1	shim mm 2.35
40	04416483	1	shim mm 2.40
40	04416484	1	shim mm 2.45
40	04416485	1	shim mm 2.50
40	04416620	1	shim mm 1.50
50	0.010.3725.2	1	washer 63x2
56	0.010.3729.0	1	special bushing
60	0.010.3770.0	1	gear Z = 34
70	04416403	1	ball bearing
80	0.900.0289.9	1	circlip 50x3
90	0.010.3727.1	1	circlip 90x4
92	0.010.3769.2	1	shaft Z = 34
100	0.010.3770.2	1	gear Z = 36
102	0.900.0289.8	1	circlip 45x2.5
120	0.900.0482.6	1	shaft Z = 24
140	0.900.0479.8	3	stud bolt
150	0.010.3769.1	1	bush Z = 24
160	0.010.3725.1	1	circlip 30x1.5
160	0.010.3726.0	1	circlip 30x1.10
160	0.010.3727.0	1	circlip 30x2
160	0.010.3759.2	1	circlip S = 1.3
160	0.010.3760.0	1	circlip S = 1.70
170	04415985	4	ring 48x2
180	04416364	7	ring 40x2
190	0.010.3757.1	1	ball bearing
200	0.900.0289.3	1	circlip 80 x 4
210	0.010.2876.2	1	circlip 40x2.5

Section: GEAR  
**MAIN GEARBOX**

Fig.	P/n	QTY	Name
------	-----	-----	------

Notes:  
 [IRON 165.7 CONTINUO]



10	0.900.0483.9	1	spider Z = 102
14	0.900.0468.9	1	bush
20	0.010.3758.0	2	ball bearing
30	0.900.0468.8	2	thrust bearing
32	0.900.0468.7	4	disc 46x65x1
36	0.900.0498.3	1	ball bearing
38	0.900.0474.2	1	disc Ø 51.8, 70x10
40	0.900.0483.0	3	planet gear Z = 32
50	0.900.0479.9	3	roller bearing
60	0.900.0463.3	6	washer
70	0.900.0463.8	3	pin
72	04416947	3	grub screw m 8x8
82	0.900.0467.8	6	roll pin 3 x 16
90	0.900.0465.7	1	tube
100	0.900.0467.2	2	circlip 205
111	0.900.0484.0	1	spider Z = 99
112	04416684	4	ball
118	0.900.0483.1	1	crown wheel Z = 99
120	0.900.0483.7	4	planet gear Z = 23
130	0.900.0480.0	4	roller bearing
140	0.900.0464.2	8	slewing ring
160	0.900.0463.5	4	pin
162	0.900.0467.9	4	roll pin 4x14
170	0.900.0482.9	1	crown wheel Z = 99
180	0.010.3760.1	2	circlip s = 2.2
190	0.900.0482.7	1	crown wheel Z=96
200	0.900.0483.8	1	gear Z = 48
221	0.900.0484.1	1	spider Z = 102
224	0.900.0482.8	3	planet gear Z = 32
226	0.900.0483.2	6	lock-tab
228	0.900.0463.9	3	pin
229	0.900.0468.0	3	stud bolt m 5x6
233	0.900.0480.1	3	crown wheel
240	0.900.0483.6	1	gear z=38
242	0.900.0464.3	2	bush
260	0.010.3345.1	1	circlip 50x2
270	0.900.0483.3	1	support
280	0.010.3726.1	1	circlip SB 80
290	0.900.0483.4	1	support
300	0.900.0483.5	1	support
310	0.900.0467.3	1	circlip SB 220

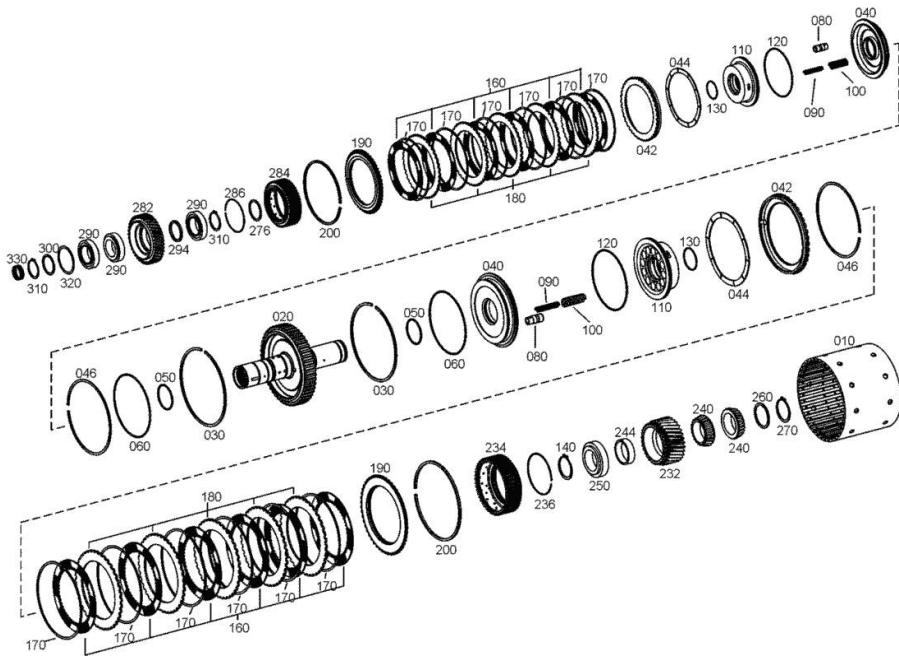


Section: GEAR  
CLUTCH

Fig.	P/n	QTY	Name
------	-----	-----	------

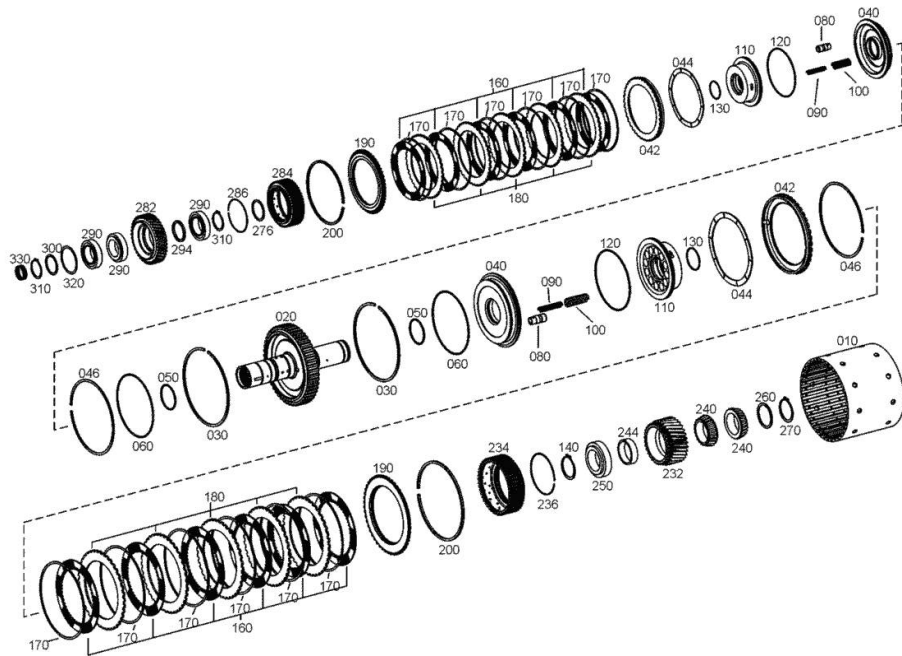
Notes:  
[IRON 165.7 CONTINUO]

10	0.900.0486.5	1	support Z = 50
20	0.900.0486.3	1	shaft Z = 50
30	0.900.0465.6	2	circlip
40	0.900.0485.9	2	piston
42	0.900.0486.0	2	block Z = 50
44	0.900.0464.1	2	spring
46	0.900.0478.8	2	circlip S=2,00
50	0.900.0481.3	2	oil seal
60	0.900.0481.1	2	oil seal
80	0.900.0485.5	6	piston
90	04431765	24	spring
100	0.010.3420.1	18	spring
110	0.900.0485.6	2	piston ring
120	0.900.0481.4	2	oil seal
130	0.900.0467.0	2	circlip 58
140	0.900.0477.9	2	circlip
160	0.900.0463.0	12	disc
170	0.900.0464.0	12	spring washer
180	0.900.0485.7	10	disc A=3.80
190	0.900.0486.4	2	disc Z = 50
200	0.900.0499.4	4	circlip mm 0.060
200	0.900.0499.5	4	circlip mm 0.070
200	0.900.0499.6	4	circlip mm 0.075
200	0.900.0499.7	4	circlip mm 0.075
200	0.900.0499.8	4	circlip mm 0.080
200	0.900.0499.9	4	circlip mm 0.085
200	0.900.0500.0	4	circlip mm 0.090
200	0.900.0500.1	4	circlip mm 0.095
200	0.900.0500.2	4	circlip mm 0.100
200	0.900.0500.3	4	circlip mm 0.110
232	0.900.0485.4	1	gear Z = 31
234	0.900.0485.8	1	support Z = 48
236	0.900.0467.4	1	circlip 107
240	0.900.0480.3	2	roller bearing
244	0.900.0474.5	1	spacer S=17,20
244	0.900.0474.6	1	spacer S=17,24
244	0.900.0474.7	1	spacer S=17,28
244	0.900.0474.8	1	spacer S=17,32
244	0.900.0474.9	1	spacer S=17,36
244	0.900.0475.0	1	spacer S=17,40
244	0.900.0475.1	1	spacer S=17,44



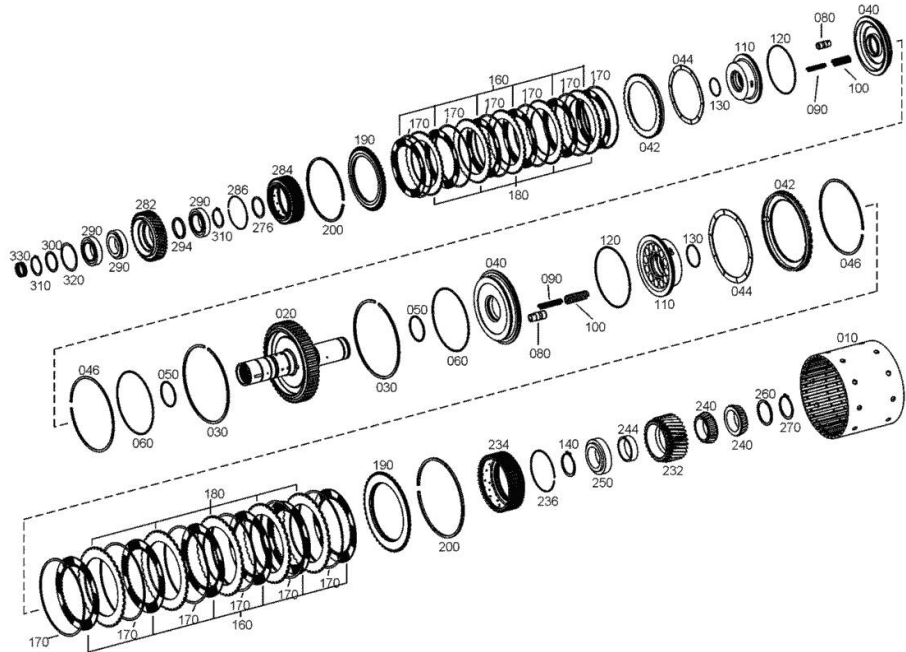
Section: GEAR  
CLUTCH

Fig.	P/n	QTY	Name
244	0.900.0475.2	1	washer S=17,48
244	0.900.0475.3	1	spacer S=17,52
244	0.900.0475.4	1	spacer S=17,56
244	0.900.0475.5	1	spacer S=17,60
244	0.900.0477.1	1	spacer S=17,64
244	0.900.0477.2	1	spacer S=17,68
244	0.900.0477.3	1	spacer S=17,72
244	0.900.0477.4	1	spacer S=17,76
244	0.900.0477.5	1	spacer S=17,80
244	0.900.0477.6	1	spacer S=17,84
244	0.900.0477.7	1	spacer S=17,88
250	0.900.0480.4	1	roller bearing
260	0.900.0470.6	1	shim S=1,00
260	0.900.0470.7	1	shim S=1,10
260	0.900.0470.8	1	shim S=1,20
260	0.900.0470.9	1	shim S=1,30
260	0.900.0471.0	1	shim S=1,40
260	0.900.0471.1	1	shim S=1,5
260	0.900.0471.2	1	shim S=1,6
260	0.900.0471.3	1	shim S=1,70
260	0.900.0471.4	1	shim S=1,80
260	0.900.0471.5	1	shim S=2,00
260	0.900.0471.6	1	shim S=1,05
260	0.900.0471.7	1	shim S=1,15
260	0.900.0471.8	1	shim S=1,25
260	0.900.0471.9	1	shim S=1,35
260	0.900.0472.0	1	shim S=1,45
260	0.900.0472.1	1	shim S=1,55
260	0.900.0472.2	1	shim S=1,65
260	0.900.0472.3	1	shim S=1,75
260	0.900.0472.4	1	shim S=1,85
260	0.900.0472.5	1	shim S=1,90
270	0.900.0477.8	1	circlip 55 x 2.0
276	0.900.0472.6	1	washer S=2,65
282	0.900.0486.1	1	gear z=39
284	0.900.0486.2	1	support Z = 48
286	0.900.0467.5	1	circlip 118
290	0.900.0481.6	3	roller bearing
294	0.900.0475.6	1	spacer S=5,48
294	0.900.0475.7	1	spacer S=5,43
294	0.900.0475.8	1	spacer S=5,38
294	0.900.0475.9	1	spacer S=5,33
294	0.900.0476.0	1	spacer S=5,28
294	0.900.0476.1	1	spacer S=5,23



Section: GEAR  
CLUTCH

Fig.	P/n	QTY	Name
294	0.900.0476.2	1	spacer S=5,18
294	0.900.0476.3	1	spacer S=5,13
294	0.900.0476.4	1	spacer S=5,08
294	0.900.0476.5	1	spacer S=5,03
294	0.900.0476.6	1	spacer S=4,98
294	0.900.0476.7	1	spacer S=4,93
294	0.900.0476.8	1	spacer S=4,88
294	0.900.0476.9	1	spacer S=4,83
294	0.900.0477.0	1	spacer S=4,78
300	0.900.0472.6	1	washer S=2,65
300	0.900.0472.7	1	washer S=2,60
300	0.900.0472.8	1	washer S=2,55
300	0.900.0472.9	1	washer S=2,50
300	0.900.0473.0	1	washer S=2,45
300	0.900.0473.1	1	washer S=2,40
300	0.900.0473.2	1	washer S=2,35
300	0.900.0473.3	1	washer S=2,30
300	0.900.0473.4	1	washer S=2,25
300	0.900.0473.5	1	washer S=2,20
300	0.900.0473.6	1	washer S=2,15
300	0.900.0473.7	1	washer S=2,10
300	0.900.0473.8	1	washer S=2,05
300	0.900.0473.9	1	washer S=2,00
310	0.900.0477.9	2	circlip
320	0.010.3741.2	1	disc s = 2.50
320	0.010.3742.0	1	disc s = 2.45
320	0.010.3742.1	1	disc s = 2.40
320	0.010.3742.2	1	disc s = 2.35
320	0.010.3743.0	1	disc s = 2.30
320	0.010.3743.1	1	disc s = 2.25
320	0.010.3743.2	1	disc s = 2.20
320	0.010.3744.0	1	disc s = 2.15
320	0.010.3744.1	1	disc s = 2.10
320	0.010.3744.2	1	disc s = 2.05
320	0.010.3745.0	1	disc S = 2.00
320	0.010.3745.1	1	disc S = 1.95
320	0.010.3745.2	1	disc S = 1.90
320	0.010.3746.0	1	disc S = 1.85
320	0.010.3746.1	1	disc S = 1.80
320	0.010.3746.2	1	disc S = 1.75
320	0.010.3747.0	1	disc S = 1.70
320	0.010.3747.1	1	disc S = 1.65
320	0.010.3747.2	1	disc S = 1.60
320	0.010.3748.0	1	disc S = 1.55





**Suggest:**

**For more complete manuals. Please go to the home page.**

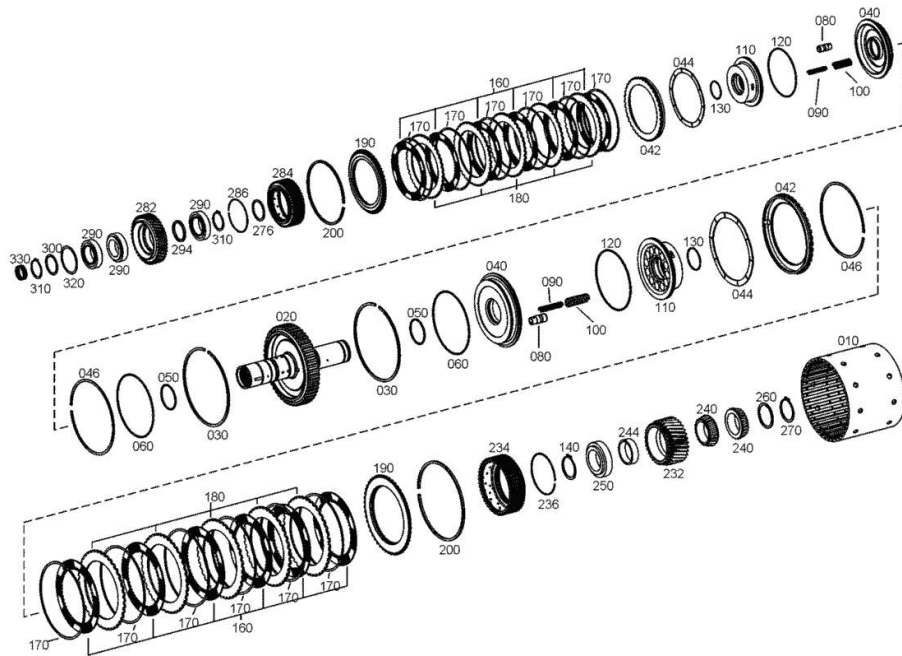
**<https://www.ebooklibonline.com>**

**If the above button click is invalid. Please download this document first, and then click the above link to download the complete manual.**

**Thank you so much for reading**

Section: GEAR  
**CLUTCH**

Fig.	P/n	QTY	Name
320	0.010.3748.1	1	disc S = 1.50
330	04434227	1	roller bearing



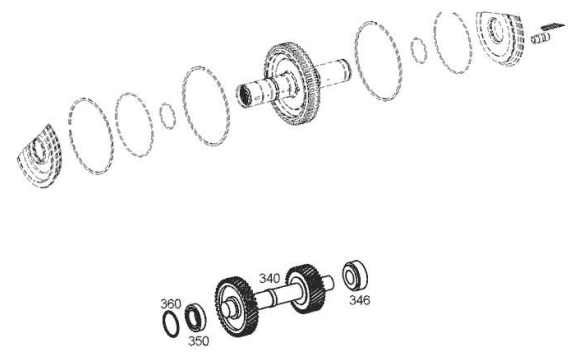
Section: GEAR

**CLUTCH**

Fig.	P/n	QTY	Name
------	-----	-----	------

Notes:  
[IRON 165.7 CONTINUO]

340	0.010.3771.0	1	wheel z = 40
346	0.010.3754.2	1	roller bearing
350	0.010.3759.0	1	roller bearing
360	0.010.3736.1	1	shim A = 1.2
360	0.010.3736.2	1	shim A = 1.25
360	0.010.3737.0	1	shim A = 1.3
360	0.010.3737.1	1	shim A = 1.35
360	0.010.3737.2	1	shim A = 1.4
360	0.010.3738.0	1	shim A = 1.45
360	0.010.3738.1	1	shim A = 1.50
360	0.010.3738.2	1	shim A = 1.55
360	0.010.3739.0	1	shim A = 1.6
360	0.010.3739.1	1	shim A = 1.65
360	0.010.3739.2	1	shim A = 1.70
360	0.010.3740.0	1	shim A = 1.75
360	0.010.3740.1	1	shim A = 1.8
360	0.010.3740.2	1	shim A = 1.85
360	0.010.3741.0	1	shim A = 1.90
360	0.010.3741.1	1	shim A = 1.95



**<https://www.ebooklibonline.com>**

Hello dear friend!

Thank you very much for reading.

Enter the link into your browser.

The full manual is available for immediate download.

**<https://www.ebooklibonline.com>**