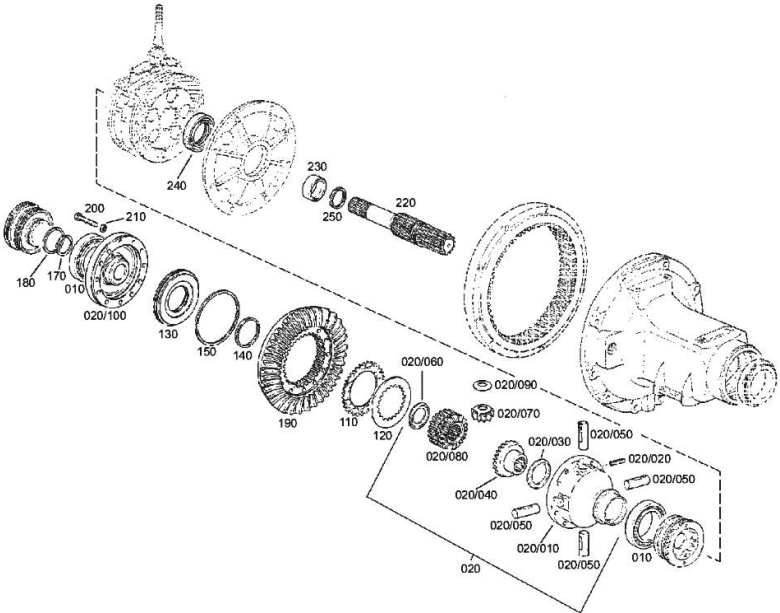


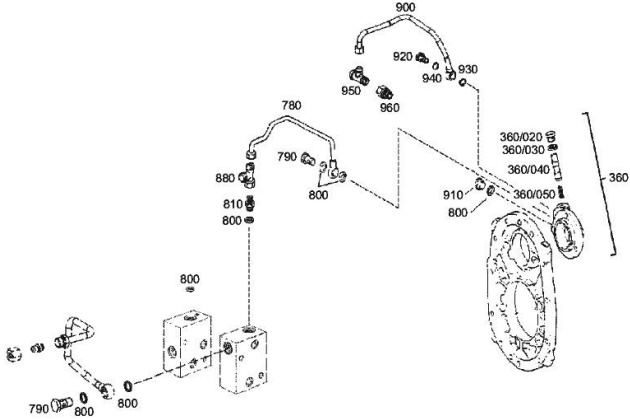
DIFFERENTIAL - 2095 009 057

Fig.	P/n	QTY	Name
10	0.010.3580.1	2	roller bearing
20	0.900.1408.1	1	differential carrier
20.10	0.010.3457.1	1	differential carrier
20.20	0.010.3349.0	4	roll pin 8 x 40
20.30	0.900.0124.2	1	slewing ring
20.40	04417296	1	gear
20.50	0.010.3457.2	4	axle
20.60	0.900.0124.0	1	slewing ring
20.70	0.900.0288.9	4	planet gear
20.80	04417301	1	bearing
20.90	0.900.0288.8	4	slewing ring
20.100	04417310	1	box
110	0.900.1398.2	8	disc Z = 48
120	0.900.1398.7	7	thin plate Z = 38
130	0.900.0025.0	1	piston
140	0.900.0124.1	1	oil seal
150	0.900.0268.5	1	oil seal 69 x 3
170	0.900.0800.7	1	ring 55 x 2.5
180	0.900.0800.8	1	ring 70 x 3.0
190	0.900.0956.8	1	bevel ring gear
200	0.010.3729.2	12	screw m 12 x 80
210	0.900.0277.9	12	washer
220	0.010.3460.0	2	pinion
230	04417315	2	bushing
240	04417316	2	oil seal
250	0.900.0278.9	2	ring 54 x 2.5



P.T.O. - POWER TAKE OFF - 2095 009 057

Fig.	P/n	QTY	Name
360	0.900.1235.6	1	cover
360.20	0.010.2906.0	1	plug m 16 p.1.5
360.30	04436331	1	oil seal 16 x 20
360.40	0.900.1386.4	1	piston
360.50	0.900.1384.9	1	spring
780	0.900.1408.3	1	tube
790	0.900.0282.1	2	pipe union
800	04423731	7	oil seal 14 x 18
810	04417466	1	pipe fitting
880	04417783	1	pipe fitting
900	0.900.0283.5	1	tube
910	0.900.0280.7	1	stop
920	04427560	1	pipe union
930	0.010.2895.0	1	gasket 14x20
940	04436331	1	oil seal 16 x 20
950	04431782	1	threaded joint
960	0.900.0282.4	1	pipe union



P.T.O. - POWER TAKE OFF - 2095 009 057

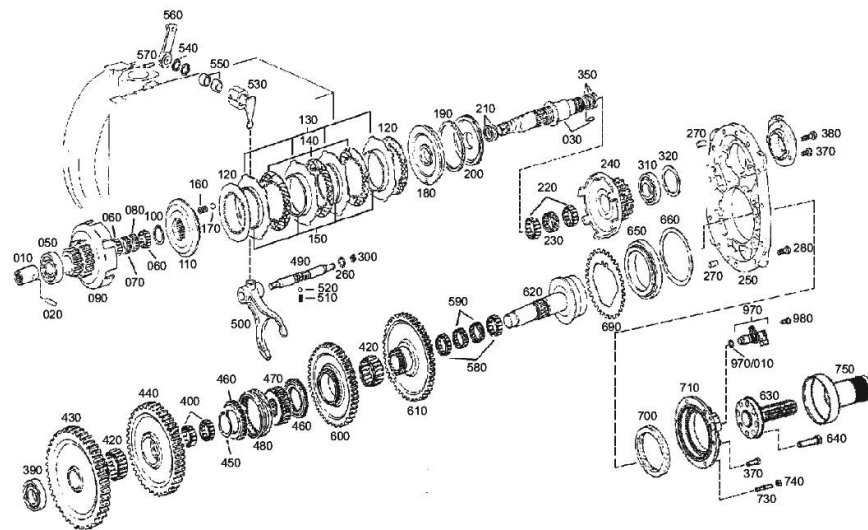


Fig.	P/n	QTY	Name
10	04421009	1	sleeve
20	0.010.2894.1	1	pin 8 x 30 -> (...)
20	0.900.0290.1	1	roll pin (...) <-
30	0.900.0058.5	1	shaft (...) <-
30	0.900.1408.2	1	shaft -> (...)
50	0.900.1406.7	1	roller bearing -> (...)
50	04417336	1	roller cage (...) <-
60	04417336	2	roller cage
70	04417337	1	roller cage
80	04417338	3	roller cage
90	0.900.0287.7	1	gear
100	0.010.3724.2	1	circlip 40 x 1.75
110	0.900.0955.7	1	hub
120	0.900.1405.3	2	gear -> (...) - (...) <-
120	0.900.1498.2	2	disc z=38 -> (...)
120	04417343	2	ring (...) <-
130	0.900.1402.9	5	ring
140	0.900.1441.4	4	thin plate z=38
150	0.900.1498.1	5	spring
160	04417347	8	spring
170	04415830	8	ball 12 mm
180	0.900.0957.1	1	cylinder (...) <-
180	0.900.1408.9	1	cylinder -> (...)
190	0.900.0468.4	1	oil seal 120x3
200	0.900.0489.5	1	piston
210	0.900.0879.0	2	ring
220	04417383	2	roller cage
230	04417353	1	roller cage
240	0.900.0287.8	1	gear
250	04417355	1	cover
260	0.900.0278.8	1	oil seal
270	04328555	2	cylindrical plug 10 m 6x20
280	0.900.0279.9	11	screw m 10 x 30

<https://www.ebooklibonline.com>

Hello dear friend!

Thank you very much for reading.

Enter the link into your browser.

The full manual is available for immediate download.

<https://www.ebooklibonline.com>

P.T.O. - POWER TAKE OFF - 2095 009 057

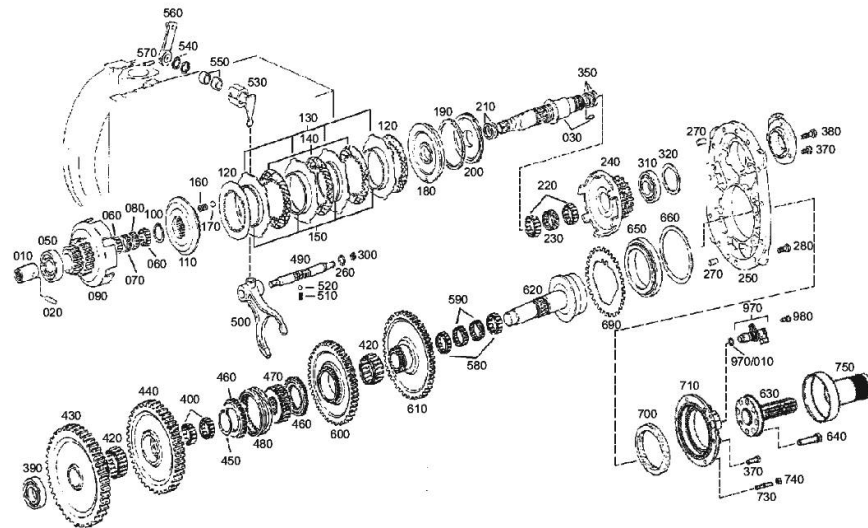


Fig.	P/n	QTY	Name
300	0.010.3358.0	1	nut m 10
310	0.900.0279.2	1	roller bearing
			(...) <-
310	0.900.1385.0	1	bearing
			-> (...)
320	0.000.0000.1	1	cannot be supplied
320	04417360	1	shim s = 0.10
320	04417361	1	shim s = 0.15
320	04417362	1	shim s = 0.40
350	04423359	3	ring
370	0.900.0291.0	4	screw
			(...) <-
370	04434498	4	screw m 8 x 25
			-> (...)
380	0.900.0280.0	1	screw m 8 x 45
390	04417335	1	roller bearing
400	04417336	2	roller cage
420	04417368	2	roller cage
430	0.900.0288.3	1	gear
440	04417370	1	gear wheel
450	0.010.3347.1	1	circlip 38x2.5
460	04427547	2	control panel
470	04423335	1	support
480	04423337	1	sleeve
490	0.900.1499.8	1	rod
			-> (...)
490	04424371	1	lever
			(...) <-
500	0.010.3701.2	1	fork
510	04417378	1	spring
520	04415909	1	ball
530	04417379	1	small lever
540	0.900.0278.5	2	ring 20x3.5
550	04417381	2	bushing
560	0.900.0294.2	1	lever
			(...) <-
560	04417382	1	lever
			-> (...)
570	0.010.3348.2	1	roll pin 8x36
			-> (...)
570	0.900.0290.2	1	roll pin
			(...) <-
580	04417352	2	roller cage
			-> (...)

P.T.O. - POWER TAKE OFF - 2095 009 057

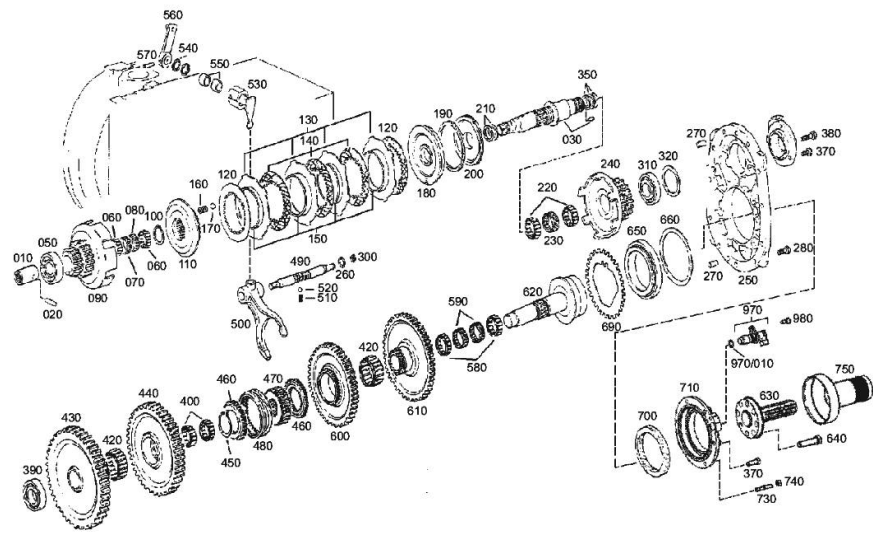


Fig.	P/n	QTY	Name
580	04417383	2	roller cage (...) <-
590	04417384	2	roller cage
600	0.900.0288.5	1	gear
610	0.900.0288.4	1	gear
620	0.900.0957.0	1	shaft
630	04417388	1	shaft
640	0.010.3293.0	8	screw m 12 x 50
650	0.900.0282.9	1	roller bearing
660	0.000.0000.1	1	cannot be supplied
660	04417391	1	shim s = 0.10
660	04417392	1	shim s = 0.15
660	04417393	1	shim s = 0.40
690	0.900.1432.0	1	gear -> (...)
690	04439236	1	gear (...) <-
700	04417395	1	oil seal 94x118x12
710	04417438	1	cover
730	0.900.0281.3	4	stud bolt m 8 x 35
740	0.900.0281.5	4	nut m 8
750	04417440	1	guard
970	0.010.2874.2	1	speed sensor -> (...)
970.10	04417747	1	oil seal 15.54x2.62 -> (...)
980	0.900.1235.8	1	screw m8x14 -> (...)

IRON 115 DCR -> ZKDT680200TS10001

Section: D0 - TRANSMISSION

Ref: 04454651.4/80

REAR DIFFERENTIAL AND HALF-SHAFTS - 2095 009 057

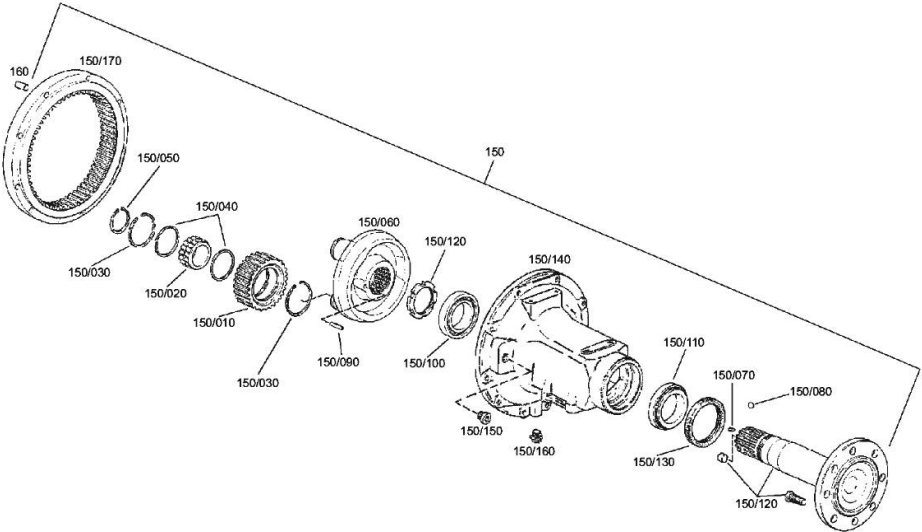


Fig.	P/n	QTY	Name
150	0.900.0993.4	2	support
150.10	0.900.1409.9	3	planet gear
150.20	0.900.0282.8	3	roller bearing
150.30	0.900.0278.1	6	circlip
150.40	0.900.0282.6	6	slewing ring 72x80.8x1
150.50	0.010.2888.1	3	circlip 55 x 2.0
150.60	0.900.0956.9	1	spider
150.70	0.010.3588.2	1	grub screw m 10x16
150.80	04309268	1	ball
150.90	0.900.0278.3	1	roll pin 8x90
150.100	0.900.0283.0	1	roller bearing
150.110	0.900.0953.7	1	roller bearing
150.120	0.900.0489.3	1	shaft
150.120	04439237	-	wheel stud
150.130	0.010.3643.0	1	ring
150.140	0.900.0957.5	1	support
150.150	0.900.0001.8	2	plug
150.160	0.010.3849.0	1	plug
150.170	0.900.1365.3	1	crown wheel Z = 105
160	0.900.0278.2	2	pin 12 x 24

REAR GEARBOX CASE - 2095 009 057

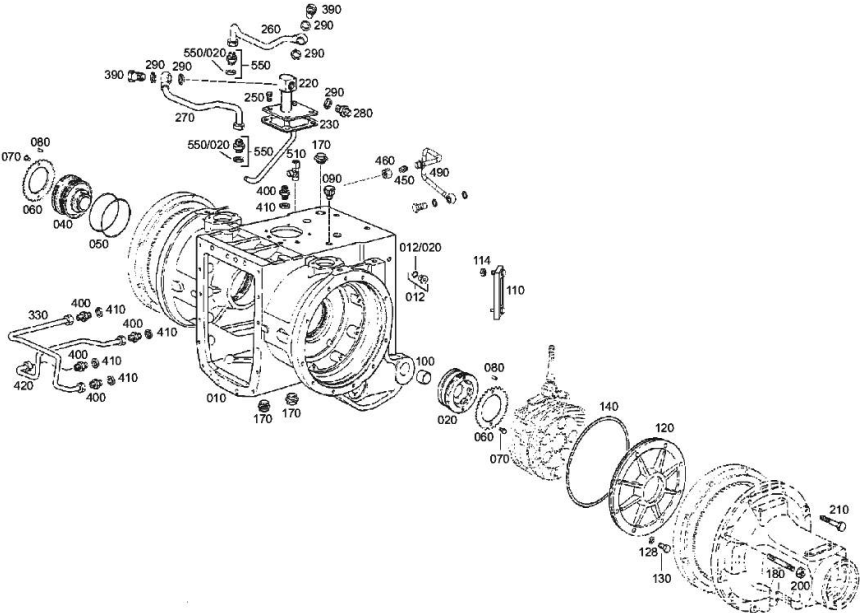


Fig.	P/n	QTY	Name
10	0.900.1409.1	1	gear box
12	04434494	2	screw
12.20	0.010.2627.1	1	oil seal 11x2
20	04428944	1	register
30	0.010.3849.0	1	plug
			(...) <-
40	04428945	1	register
50	0.900.0278.7	2	ring
60	04417449	2	plate
70	04435695	4	screw m 8 x 16
80	04435703	2	pin 5 x 20
90	04417453	1	plug
100	04417451	2	bushing
110	04419731	1	level indicator
114	04423732	2	rubber plug
120	0.900.1409.2	2	plate
			-> (...)
120	04428583	2	plate
			(...) <-
128	0.900.0277.9	4	washer
130	0.900.0279.7	16	screw m 12 x 40
140	04428220	2	oil seal 305x4
170	0.010.3849.1	3	plug
180	04423326	4	screw
200	0.900.0281.4	4	nut m 12
210	04423325	16	screw
220	0.900.0287.4	1	tube
230	0.010.2897.1	1	gasket
250	0.010.2874.0	4	screw m 8 x 22
260	0.900.0287.5	1	tube
270	0.900.0287.6	1	tube
280	0.900.0282.3	1	pipe union
290	0.900.0985.0	5	oil seal 18 x 24
330	04428942	1	tube
390	0.900.0282.0	2	screw
400	04417466	5	pipe fitting
410	04423731	5	oil seal 14 x 18
420	04417478	1	tube
450	0.010.3101.1	1	plug
460	04417788	1	nut
490	0.900.0490.8	1	tube
510	04417783	1	pipe fitting
550	0.900.1392.0	2	pipe fitting
550.20	0.900.1239.4	1	oil seal 15.3x2.4

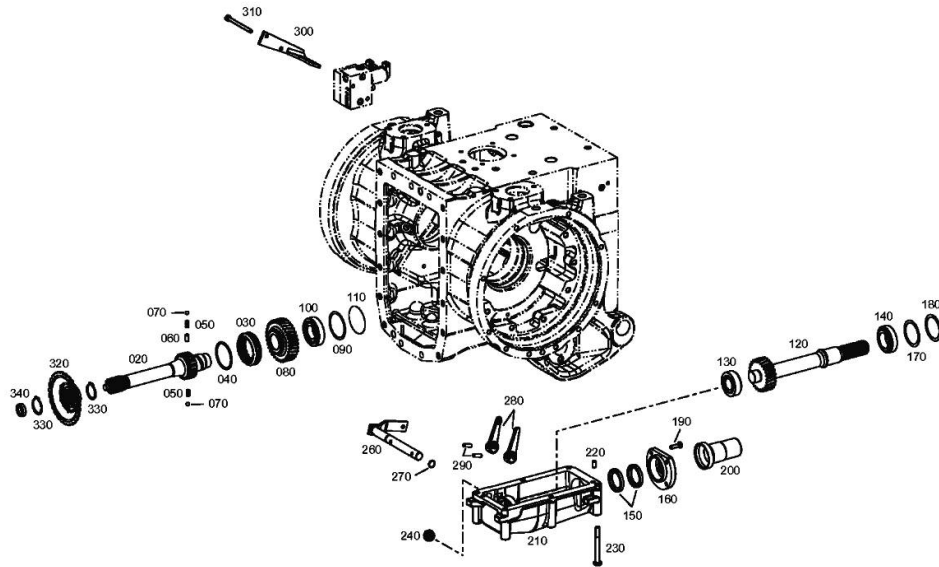
IRON 115 DCR -> ZKDT680200TS10001

Section: D0 - TRANSMISSION

Ref: 04454651.4/80

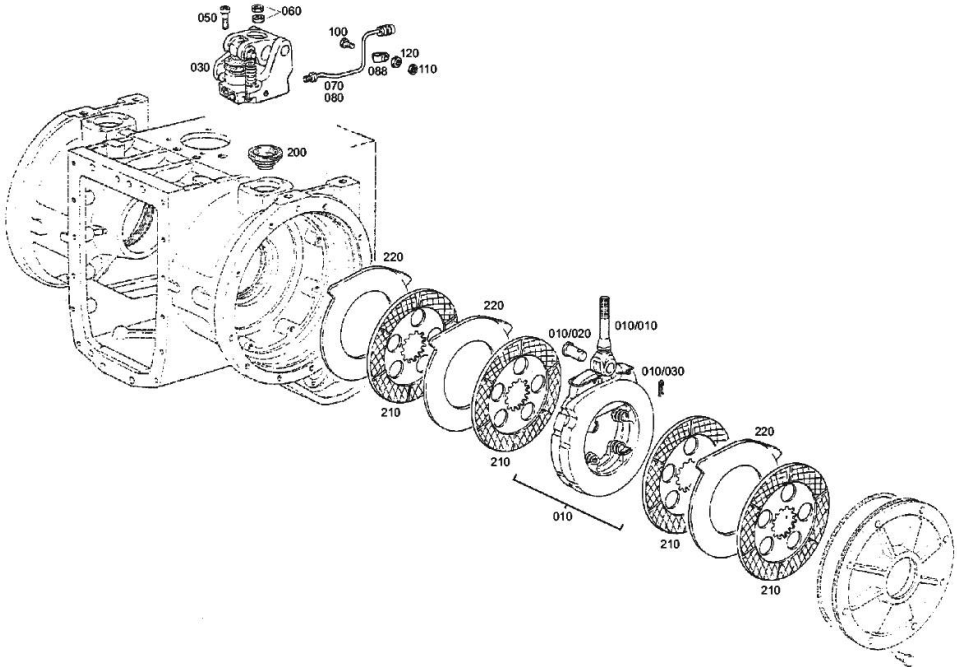
ROAD P.T.O. SHAFT - 2095 009 057

Fig.	P/n	QTY	Name
20	0.900.1500.0	1	shaft
30	04417488	1	sleeve
40	0.900.0278.0	1	circlip
50	04417378	2	spring
60	0.900.0953.2	1	cylindrical plug m 6 x 15
70	04415909	2	ball
80	04417491	1	gear wheel
90	0.900.1380.1	1	washer
90	04417360	1	shim s = 0.10
90	04417361	1	shim s = 0.15
90	04417362	1	shim s = 0.40
100	0.900.0279.3	1	roller bearing
110	04417494	1	cover
120	04417495	1	shaft
130	04431639	1	bearing
140	04416110	1	roller bearing
150	04417498	2	ring
160	04417499	1	cover
170	0.010.3343.2	1	small block 55x68x0.5
180	0.010.3343.1	1	small block 55x68x0.1
190	04434498	4	screw m 8 x 25
200	04417500	1	guard
210	04417501	1	box
220	0.900.0953.2	2	cylindrical plug m 6 x 15
230	0.900.0279.6	6	screw
240	0.010.3847.2	1	stop
260	0.010.3454.1	1	shaft
270	0.900.0278.8	1	oil seal
280	04417505	2	lever
290	0.010.3348.1	2	roll pin 8x26
300	0.900.1499.9	1	plate
310	0.900.0469.5	2	screw m 8 x 100
320	0.900.1500.1	1	driver
330	0.900.1498.4	2	ring
340	0.900.1498.9	1	ball bearing



REAR BRAKES - 2095 009 057

Fig.	P/n	QTY	Name
10	0.900.0800.4	2	transmission brake
10.10	04428551	1	rod
10.20	04435740	1	pin
10.30	04435741	1	split pin
30	0.900.0800.5	2	operation
50	0.900.0469.7	6	screw m 10 x 40
60	04434557	4	nut m 14 p.1.5
70	04428558	1	tube sx/lb/li
80	04428559	1	tube dx/rh/re
88	0.900.0468.2	2	clamp 6x12
100	0.900.0280.1	2	screw m 5 x 25
110	0.900.0470.2	2	nut m 5
120	0.900.0281.6	2	nut
200	0.900.0800.9	2	rubber bushing
210	0.900.0801.2	8	disc
220	0.900.0801.3	6	disc



BRAKE CONTROLS - 2095 009 057

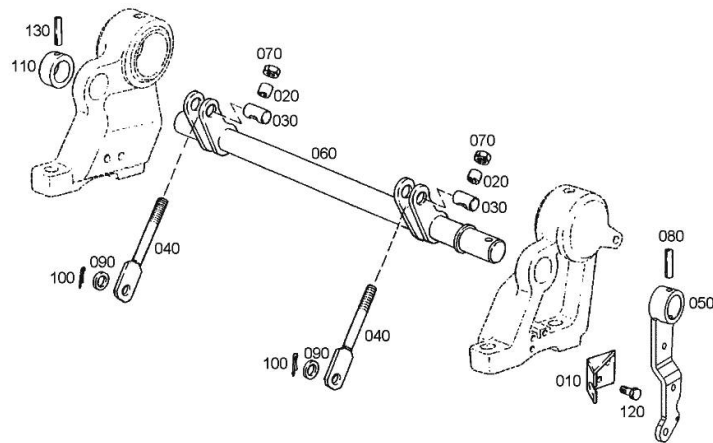
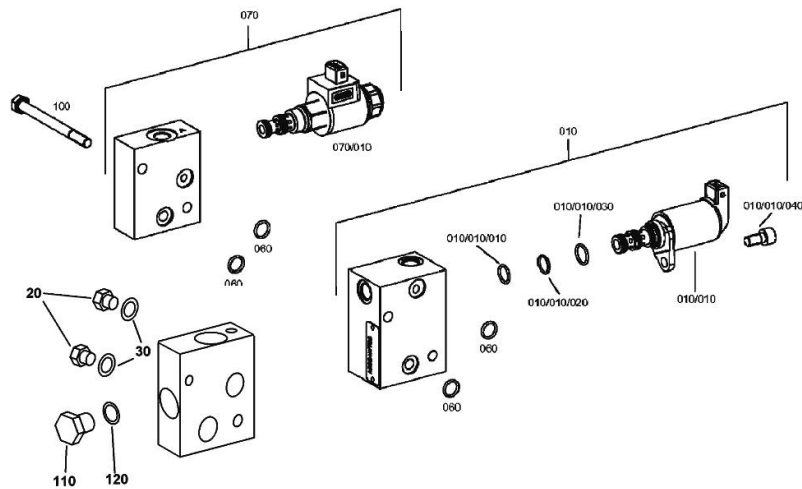


Fig.	P/n	QTY	Name
10	0.010.2901.2	1	support (...) <-
10	0.900.1239.7	1	bracket -> (...)
20	0.010.2902.0	2	bushing (...) <-
20	0.900.1239.8	2	tube -> (...)
30	0.010.2902.1	2	pin (...) <-
30	0.900.1239.9	2	pin -> (...)
40	0.010.3458.2	2	connecting rod (...) <-
40	0.900.1408.4	2	rod -> (...)
50	0.900.0466.8	1	brake lever (...) <-
50	0.900.1240.1	1	lever -> (...)
60	0.900.0955.8	1	shaft (...) <-
60	0.900.1408.5	1	shaft -> (...)
70	0.900.0281.9	2	nut m 12
80	0.010.3459.1	1	roll pin
90	0.900.0466.9	2	washer
100	0.900.0468.1	2	split pin 3.2x18
110	0.010.2904.2	1	ring (...) <-
110	0.900.0957.7	1	ring -> (...) - (...) <-
110	0.900.1240.3	1	spacer -> (...)
120	0.900.0469.4	3	screw m 8 p.1.25 x 20
130	0.010.2901.1	1	pin 6x50 -> (...)
130	0.900.0290.0	1	roll pin (...) <-

DRIVE FOR GEAR CHANGE BOX - 2095 009 057

Fig.	P/n	QTY	Name
10	0.900.0952.1	1	control
10.10	0.900.0952.8	1	solenoid valve DV
10.10	0.900.1377.5	1	gasket 12,4 x 1,78
10.20	0.900.1377.6	1	gasket 13 x 1.5
10.30	0.900.1377.7	1	gasket 14x1.78
10.40	0.900.1377.8	1	screw m 8 x 16
20	04434512	2	plug m 10 p.1 (...) <-
30	0.900.0290.7	2	circlip (...) <-
60	0.900.0801.4	4	ring 11,3 x 2,4 NBR-70-10
70	0.010.2628.2	1	control (...) <-
70	0.900.0993.3	1	control -> (...) - (...) <-
70	0.900.1363.3	1	small block -> (...)
70.10	0.900.1384.6	1	solenoid valve
100	0.900.1405.5	2	screw m 8x90
110	0.900.0281.0	1	plug m 14 p.1.5 (...) <-
120	04423731	1	oil seal 14 x 18 (...) <-



IRON 115 DCR -> ZKDT680200TS10001

Section: D0 - TRANSMISSION

Ref: 04454651.4/80

LIFTING - 2095 009 057

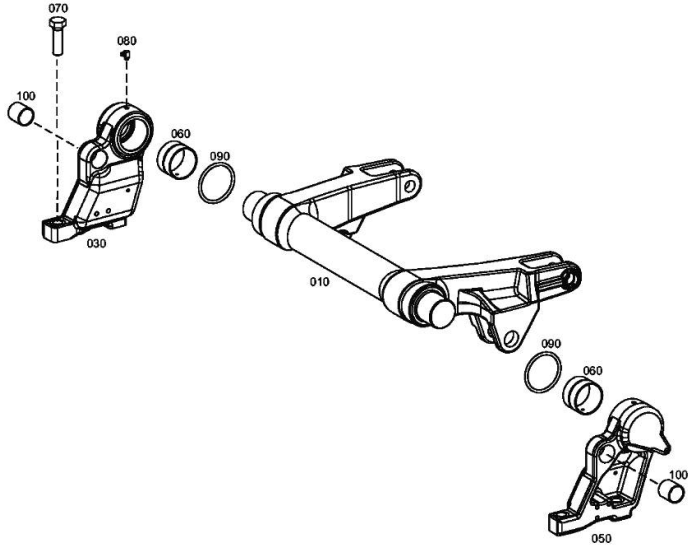


Fig.	P/n	QTY	Name
10	0.900.0824.6	1	shaft
30	0.900.0802.9	1	bearing block dx/rh/re (...) <-
30	0.900.1407.9	1	bearing block dx/rh/re -> (...)
50	0.900.0803.0	1	bearing block sx/lh/li (...) <-
50	0.900.1408.0	1	bearing block sx/lh/li -> (...)
60	04417549	2	special bushing
70	0.900.0469.1	4	screw m 20x65
80	04427636	2	grease gun m 8 p.1 x 8
90	04417552	2	ring 78.5x6
100	0.010.3844.1	2	bearing (...) <-
100	0.900.1431.3	2	bearing -> (...)

FRONT TRANSMISSION - 2095 009 057

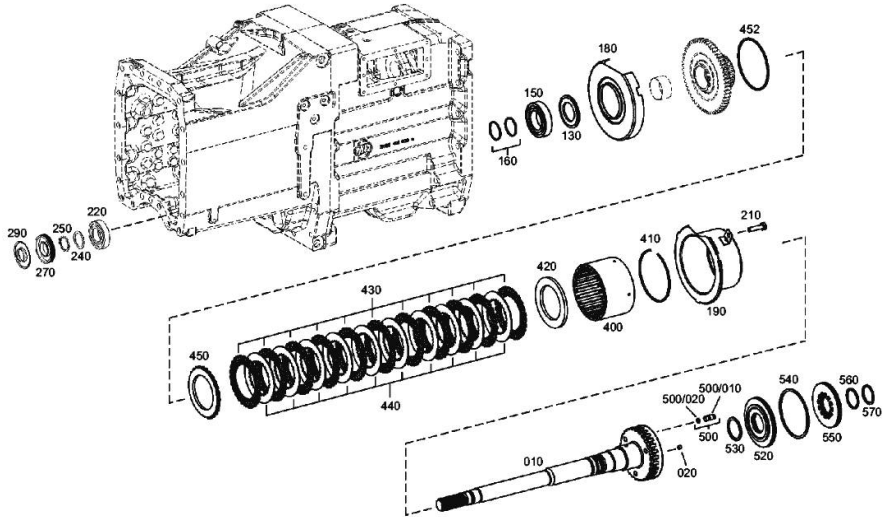


Fig.	P/n	QTY	Name
10	0.010.3440.0	1	secondary shaft Z = 24
20	04416947	1	grub screw m 8x8
130	04416402	1	shim
150	0.900.0498.5	1	ball bearing
160	04416404	2	ring 48x2.5
180	04416405	1	division
190	04416406	1	division
210	04434553	1	screw m 10 x 40
220	04436319	1	ball bearing
240	0.000.0000.1	1	cannot be supplied
240	0.010.3368.1	1	washer mm 2.20
240	0.010.3368.2	1	washer mm 2.40
240	0.010.3392.0	1	washer mm 1.10
240	0.010.3392.1	1	shim mm 1.20
240	0.010.3392.2	1	washer mm 1.30
240	0.010.3393.0	1	washer mm 1.40
240	0.010.3393.1	1	washer mm 1.50
240	0.010.3393.2	1	washer mm 1.60
240	0.010.3394.0	1	washer mm 1.70
240	0.010.3394.1	1	washer mm 1.80
240	0.010.3394.2	1	washer mm 2.00
240	04416581	1	shim mm 1.90
240	04416582	1	shim mm 2.10
240	04416583	1	shim mm 2.30
240	04416584	1	shim mm 2.50
240	04416585	1	shim mm 2.70
240	04416586	1	shim mm 2.90
240	04416587	1	shim mm 3.10
250	01273026	1	circlip 35x2.5
270	04416409	1	ring
290	04416410	1	plate
400	04416605	1	plate carrier z=27
410	0.900.0985.1	1	circlip -> (...)
410	04415928	1	ring (...)<-
420	0.000.0000.1	1	cannot be supplied
420	0.010.2875.2	1	shim mm 7.3
420	04416588	1	shim mm 5.5
420	04416589	1	shim mm 5.7
420	04416590	1	shim mm 5.9
420	04416591	1	shim mm 6.1
420	04416592	1	shim mm 6.3
420	04416593	1	shim mm 6.5



Suggest:

For more complete manuals. Please go to the home page.

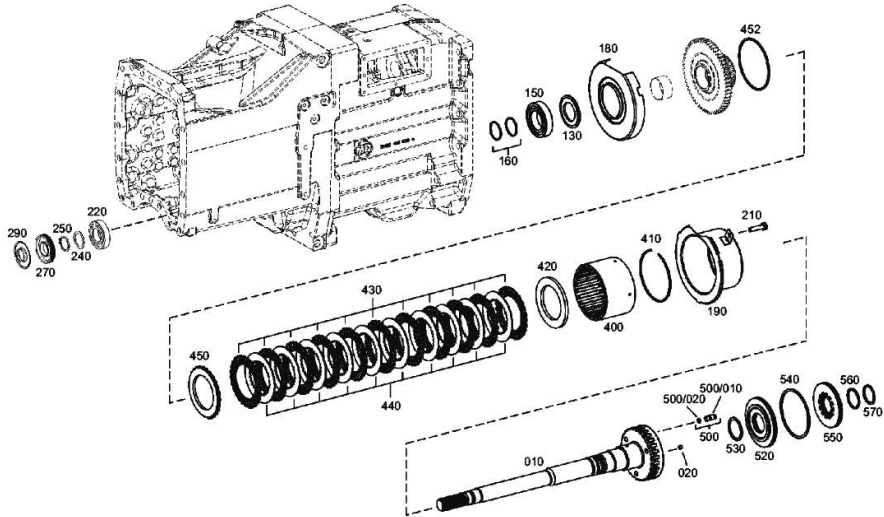
<https://www.ebooklibonline.com>

If the above button click is invalid. Please download this document first, and then click the above link to download the complete manual.

Thank you so much for reading

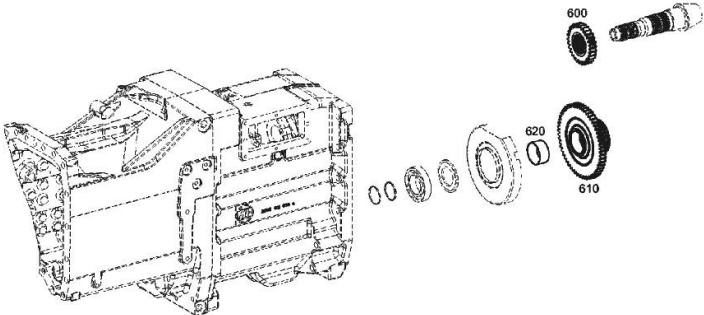
FRONT TRANSMISSION - 2095 009 057

Fig.	P/n	QTY	Name
420	04416594	1	shim mm 6.7
420	04416595	1	shim mm 6.9
420	04416596	1	shim mm 7.1
420	04416597	1	shim mm 7.5
420	04416599	1	shim mm 7.7
420	04416600	1	shim mm 7.9
420	04416601	1	shim mm 8.1
420	04416602	1	shim mm 8.3
420	04416603	1	shim mm 8.5
420	04416604	1	shim mm 8.7
430	04416412	11	disc
440	04416413	10	disc mm 2.0
450	04416414	1	washer
452	04415933	1	circlip mm 2.5
500	0.010.3437.2	3	pin
500.10	04416415	1	pin
500.20	04416416	1	oil seal 7x2.5
520	04423292	1	piston
530	04416418	1	ring
540	04331370	1	ring
550	04416419	1	spring x4
560	04416420	1	shoulder ring
570	0.010.2863.2	1	circlip 45x2.5



FRONT TRANSMISSION - 2095 009 057

Fig.	P/n	QTY	Name
600	04423288	1	gear Z = 29
610	04423290	1	gear wheel Z = 57
620	0.010.3340.1	1	bush



<https://www.ebooklibonline.com>

Hello dear friend!

Thank you very much for reading.

Enter the link into your browser.

The full manual is available for immediate download.

<https://www.ebooklibonline.com>