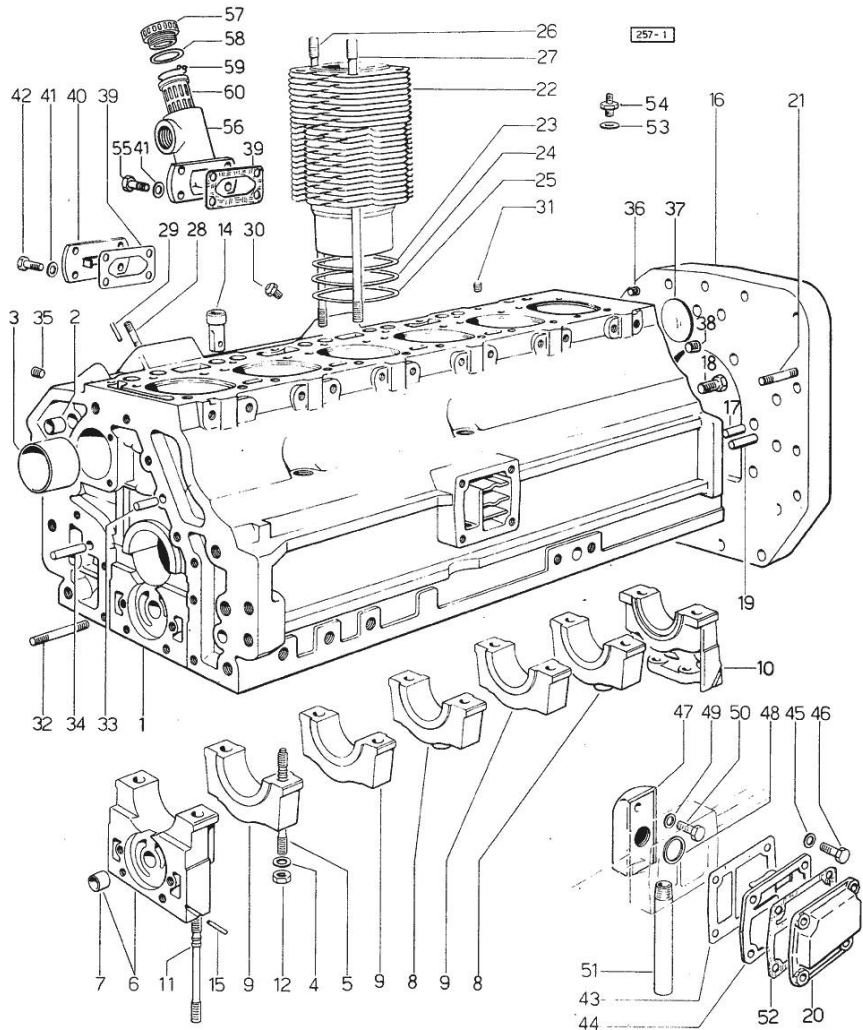


Section: ENGINE  
CRANKCASE

Fig.	P/n	QTY	Name
------	-----	-----	------

Notes:  
[GALAXI 170]

0	0.071.0050.6	1	gasket set
1	0.071.1110.4/30	1	crankcase
2	2.1559.111.0/20	2	special bushing
3	0.037.1155.0	1	bushing
4	2.1599.318.7	14	flat washer
5	0.052.1150.0	10	stud bolt
6	0.071.1112.3	1	support
7	2.1559.090.0/10	1	bushing 14.24x19.06x27
8	0.052.1113.0	2	support
9	0.052.1113.0	3	support
10	0.052.1116.0	1	support
11	0.052.1151.0	4	stud bolt
12	2.1099.064.7	14	special nut
14	0.044.1156.0	12	special bushing
15	0.029.1154.0/10	4	gasket
16	0.071.1150.0	1	flange
17	2.1651.911.0	2	cylindrical plug
18	2.0112.513.2	11	screw m 14 p.2 x 35
19	2.1653.708.0	2	pin 8x18
20	0.071.1154.0	1	small cover
21	2.0432.257.7	2	stud bolt m 12 p.1.75 - 1.25 x 30
22	0.071.1120.0/50	6	engine cylinder
23	2.1589.052.0	12	shoulder ring 115x123x0.2
24	2.1589.051.0	6	shoulder ring 116x123x0.1
25	2.1569.076.0	6	gasket 116x123x0.5
26	0.041.1123.0/10	6	stud bolt
27	0.039.1122.0	24	stud bolt m 12 p.1.5x310
28	2.0432.003.7	8	stud bolt m 8 p.1.25 / p.1 x 20
29	2.1651.306.0	2	cylindrical plug
30	0.074.1151.3/10	6	valve
31	2.3130.001.1	3	plug 1/8" gas
32	2.0432.025.7	2	stud bolt m 8 p.1.25 - 1.00 x 100
33	2.1651.711.0	1	pin 8 x 14
34	2.1699.114.0	1	pin 8x55
35	2.3139.001.1	5	plug
36	2.3130.002.1	1	plug 1/4" gas
37	2.3170.022.1	1	expansion plug 60
38	2.3130.003.1	2	plug 3/8" gas
39	0.044.1151.0	2	gasket
40	0.044.1164.2/10	1	small cover
41	2.1310.004.2	4	flat washer 8.4x17



Section: ENGINE  
CRANKCASE

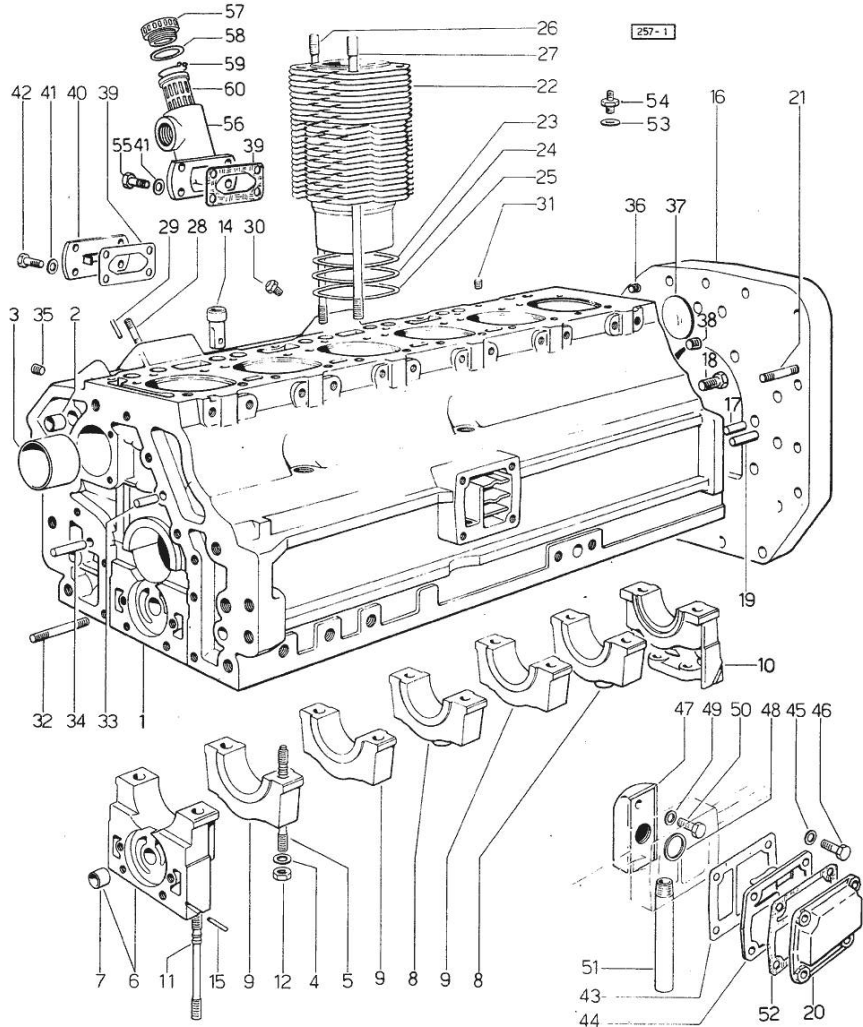


Fig.	P/n	QTY	Name
42	2.0112.204.2	2	screw m 8 p.1.25x14
43	0.044.1153.0/10	1	gasket
44	0.071.1153.0	1	small cover
45	2.1474.009.2	4	spring washer 8
46	2.0112.211.2	4	screw m 8 p.1.25 x 30
47	0.044.1155.2/20	1	cover (...) <-
47	0.071.1155.2	1	small guard (...) <-
48	0.071.1156.0	1	special oil seal
49	2.1480.014.1	1	washer 8
50	2.0312.206.2	1	screw m 8 p 1.25 x 20
51	0.044.1152.0/10	1	tube
52	0.044.1153.0/10	1	gasket (...) <-
52	0.044.1161.0	1	gasket (...) <-
53	2.1560.006.0	2	gasket 10.2 x 16
54	0.054.1150.0	2	pipe fitting
55	2.0112.204.2	2	screw m 8 p.1.25x14
55	2.0112.209.2	4	screw m 8 p 1.25 x 25
55	2.0112.211.2	2	screw m 8 p.1.25 x 30
56	0.062.1150.0/10	1	pipe union 1199 <-
56	0.062.1151.0	1	flange -> 1200
57	0.041.1135.4	1	plug 1" gas
58	2.1569.072.0	1	gasket 32 x 39.5 x 2
59	2.1411.012.1	1	circlip 30
60	0.041.1159.0/10	1	filter

Section: ENGINE  
TIMING CASE

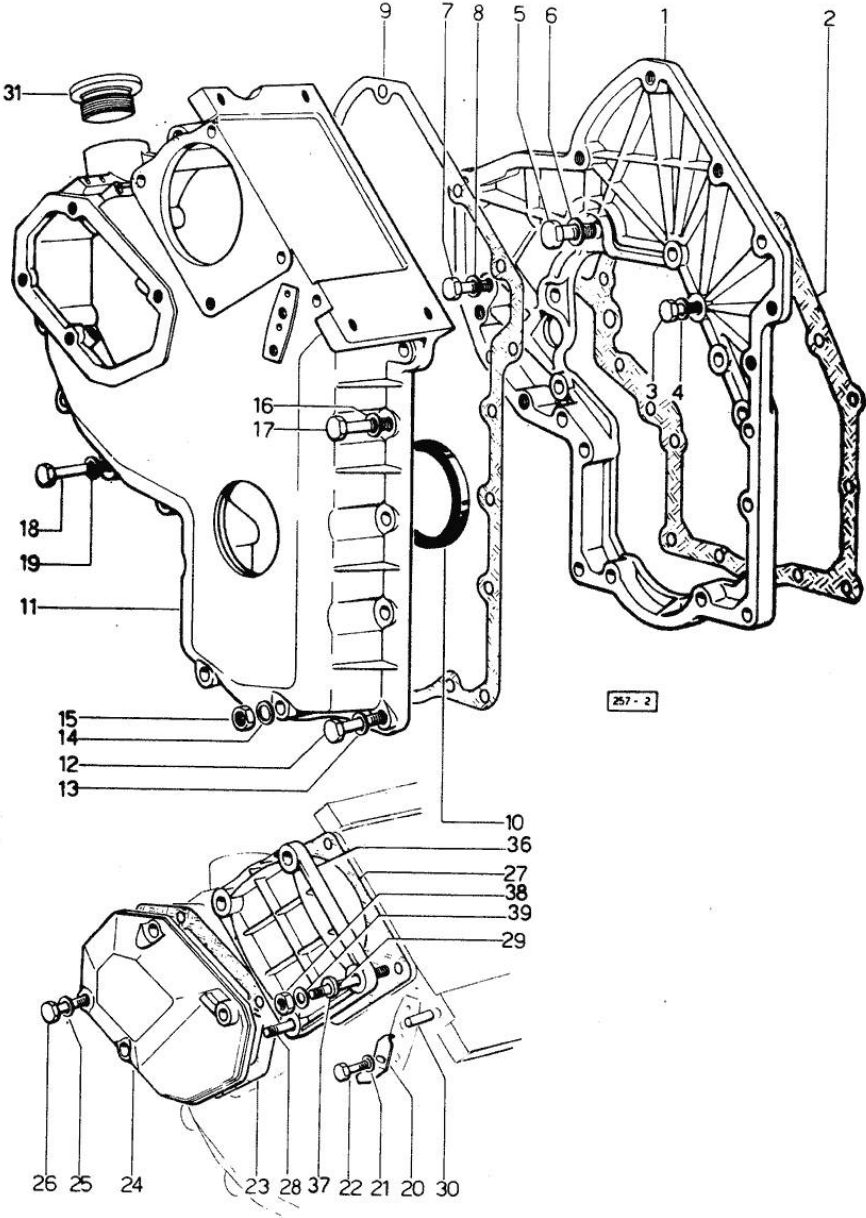


Fig.	P/n	QTY	Name
<b>Notes:</b> [GALAXI 170]			
1	0.048.1131.0	1	flange
2	2.1799.002.0	1	stick 10x13
3	2.0112.209.2	5	screw m 8 p 1.25 x 25
4	2.1480.014.1	5	washer 8
5	2.0119.034.2	1	screw m 14 p.2x20
6	2.1560.010.0	1	gasket 14.2 x 20
7	2.0112.207.2	1	screw m 8 p 1.25 x 20
8	2.1480.014.1	1	washer 8
9	0.041.1152.0/10	1	gasket
10	2.1519.010.0	1	special oil seal 58x80x10
11	0.048.1132.0/40	1	guard
12	2.0112.217.2	5	screw m 8 p.1.25 x 45
13	2.1480.014.1	5	washer 8
14	2.1560.003.0	2	copper gasket 8.2 x 12
15	2.1011.405.2	2	nut m 8 p.1
16	2.1480.014.1	2	washer 8
17	2.0112.211.2	2	screw m 8 p.1.25 x 30
18	2.0112.222.2	2	screw m 8 p.1.25x65
18	2.0119.107.2	2	screw m 8 p.1.25 x 85
19	2.1480.014.1	4	washer 8
20	0.041.1158.0	1	index
21	2.1310.004.2	1	flat washer 8.4x17
22	2.0112.204.2	1	screw m 8 p.1.25x14
23	0.048.1151.0/10	1	gasket
24	0.048.1150.0/20	1	cover
25	2.1560.006.0	4	gasket 10.2 x 16
26	2.0112.315.2	4	screw m 10 p.1.5 x 40
27	0.041.1154.0	1	gasket
28	2.0432.013.7	1	stud bolt m 8 p.1.25 / p.1 x 45
29	2.0432.028.7	3	stud bolt m 8 p.1.25-1x130
30	2.1653.717.0	1	pin 8 x 40
31	2.3199.002.2	1	plug 1 gas
36	0.037.1151.0/10	1	cover
37	2.1579.191.2	3	spacer 8.5 x 18 x 20
38	2.1011.405.2	4	nut m 8 p.1
39	2.1310.004.2	4	flat washer 8.4x17

**<https://www.ebooklibonline.com>**

Hello dear friend!

Thank you very much for reading.

Enter the link into your browser.

The full manual is available for immediate download.

**<https://www.ebooklibonline.com>**

Section: ENGINE  
**CRANKSHAFT**

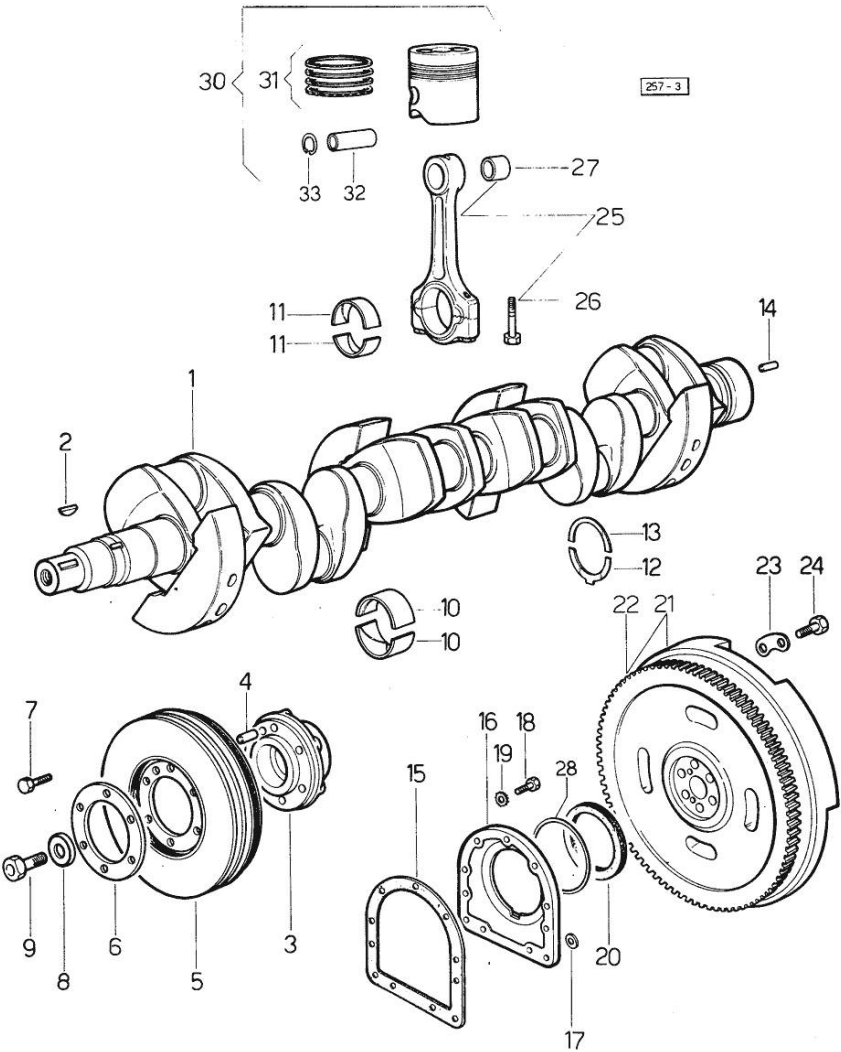


Fig.	P/n	QTY	Name
<b>Notes:</b>			
[GALAXI 170]			
1	0.037.1210.4/30	1	crankshaft
2	2.1799.002.0	1	stick 10x13 1199 <=
2	2.1799.026.0	1	key 10x10 => 1200
3	0.037.1250.0/10	1	hub
4	2.1651.911.0	1	cylindrical plug
5	0.071.1246.3/10	1	antivibration pulley
6	0.037.1255.0	1	flange
7	2.0122.461.2	6	screw m 12 p.1.25x30
8	0.001.6020.0	1	shoulder
9	2.0129.032.2	1	screw m 24 p.2x45
10	0.073.0059.0	14	main half bushing - mm 1.00
10	0.073.1215.0	14	main half bushing STANDARD
10	0.073.1215.7	14	main half bushing - mm 0.25
10	0.073.1215.8	14	main half bushing - mm 0.50
10	0.073.1215.9	14	main half bushing - mm 0.75
11	0.062.0059.0	12	con.rod half bushing - mm 1.00
11	0.062.1225.0	12	con.rod half bushing STANDARD
11	0.062.1225.7	12	con.rod half bushing - mm 0.25
11	0.062.1225.8	12	con.rod half bushing - mm 0.50
11	0.062.1225.9	12	con.rod half bushing - mm 0.75
12	0.001.4547.0	2	shoulder ring + mm 0.05
12	0.001.4548.0	2	shoulder ring + mm 0.10
12	0.001.4549.0	2	shoulder ring + mm 0.15
12	0.042.1219.0	2	shoulder ring STANDARD
13	0.001.4544.0	2	shoulder ring + mm 0.05
13	0.001.4545.0	2	shoulder ring + mm 0.10
13	0.001.4546.0	2	shoulder ring + mm 0.15
13	0.042.1218.0	2	shoulder ring STANDARD
14	2.1651.915.0	2	pin 12x35
15	0.029.1250.0/10	1	gasket
16	0.029.1240.0/10	1	flange 1110 <-
16	0.045.1240.0	1	flange -> 1111
17	2.1560.006.0	2	gasket 10.2 x 16
18	2.0112.309.2	11	screw m 10 p.1.5 x 25
19	2.1474.010.2	1	washer 10
19	2.1480.015.1	7	washer 10
20	2.1519.009.0/10	1	special oil seal

Section: ENGINE  
CRANKSHAFT

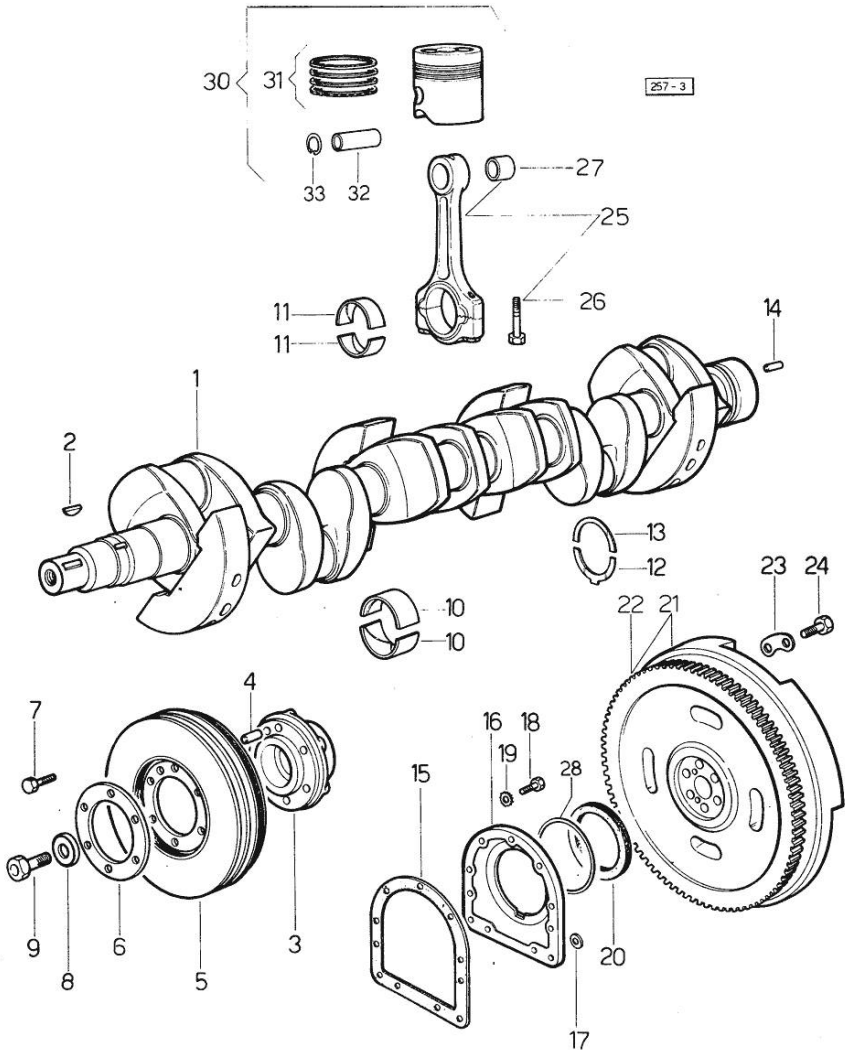


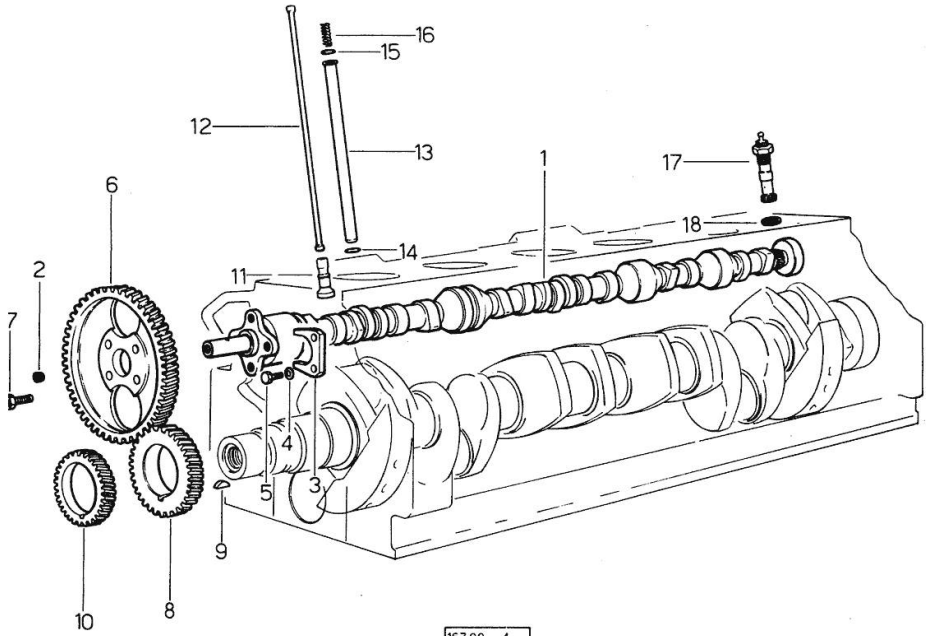
Fig.	P/n	QTY	Name
21	0.046.1256.3	1	flywheel
22	0.047.1242.0	1	crown wheel z=128
23	2.1379.006.0	3	lock-tab 15x15x36,5
24	2.0122.517.7	6	screw m 14 p.1.5x45
25	0.039.1220.3/30	6	engine connecting rod
26	0.039.1250.0	12	screw m 14 p.1.5x63
27	2.1559.114.0/10	6	special bushing
28	2.1599.404.0	1	shoulder ring
30	0.052.0060.6/30	6	complete piston STANDARD
30	0.052.0061.6/30	6	complete piston + mm 0.50
30	0.052.0062.6/30	6	complete piston + mm 1.0
31	0.071.0052.6/30	6	piston ring set
31	0.071.0053.6/30	6	piston ring set + mm 0.50
31	0.071.0054.6/30	6	piston ring set + mm 1.0
32	0.038.1236.0/10	6	piston pin Ø 18 / Ø 35 / L = mm 90
33	2.1411.014.1	12	circlip 35

Section: ENGINE  
CAMSHAFT

Fig.	P/n	QTY	Name
------	-----	-----	------

Notes:  
[GALAXI 170]

1	0.071.1310.0	1	camshaft
2	2.3130.001.1	1	plug 1/8" gas
3	0.027.1314.0/20	1	flange
4	2.1470.004.2	2	lock washer 8
5	2.0112.207.2	2	screw m 8 p 1.25 x 20
6	0.062.1321.0	1	gear z=66
7	2.0139.005.1	4	screw m 10 p.1 x 25
8	0.040.1320.0	1	gear z = 33
9	2.1720.010.0	1	key 5x9
10	0.040.1323.0/10	1	gear Z = 38
11	0.052.1330.0/20	12	tappets
12	0.052.1331.3	12	rod
13	0.041.1332.0	12	sleeve
14	2.1539.020.0	12	special oil seal 13.95x2.62
15	2.1539.022.0	12	special oil seal 12.37x2.62
16	2.4019.162.1/20	12	spring 17.2x46x1.8
17	0.041.1355.3	1	transmission
18	2.1560.014.0	1	washer 18.2 x 24



167.00 - 4

Section: ENGINE  
CYLINDER HEAD

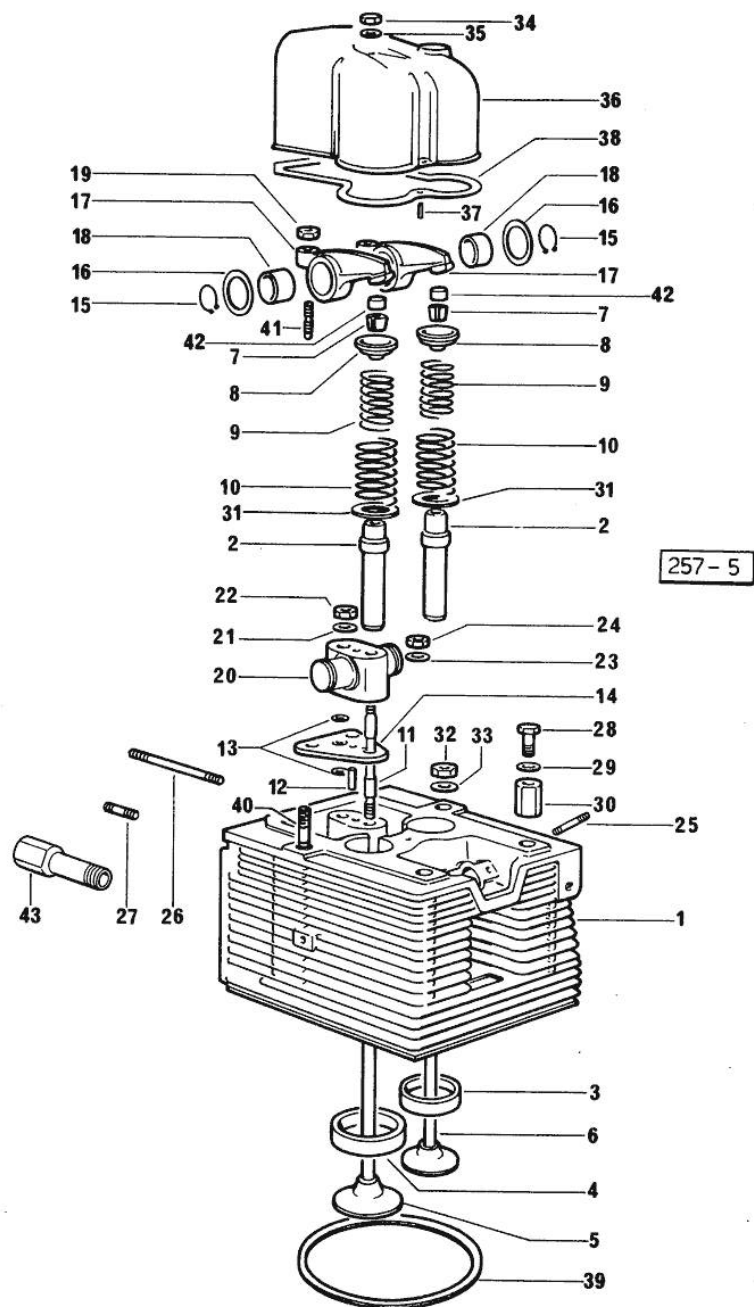


Fig.	P/n	QTY	Name
<b>Notes:</b>			
[GALAXI 170]			
0	0.071.0057.6	1	gasket set
1	0.071.1410.3	5	engine head
			1260 <-
1	0.071.1410.3/20	5	engine head
			-> 1261
1	0.071.1411.3	1	engine head
			1260 <- - FOR TRANSMITTER ASSEMBLY
1	0.071.1411.3/20	1	engine head
			-> 1261 - FOR TRANSMITTER ASSEMBLY
2	0.006.1952.0	12	valve guide
3	0.052.1452.0	6	valve seat
4	0.052.1451.0/10	6	valve seat
5	0.009.7264.2	6	inlet valve Ø mm 9
			-> 1261
5	0.071.1420.2	6	exhaust valve Ø mm 8
			1260 <-
6	0.071.1421.2	6	exhaust valve Ø mm 8
			1260 <-
6	0.074.1421.2/20	6	-
			-> 1261
7	0.062.1423.0/10	12	conical valve cotter
			1260 <-
7	0.074.1423.0	12	conical valve cotter
			-> 1261
8	0.002.9215.0/20	12	cup
			-> 1261
8	0.062.1425.0	12	cup
			1260 <-
9	2.4019.279.7	12	spring
10	2.4019.280.7	12	spring
11	0.052.1455.0	6	stud bolt
12	2.1651.509.0	6	pin 6x20
13	2.1532.035.0	12	oil seal 14x1.78
14	0.052.1454.0	6	small plate
15	2.1410.055.7	12	circlip 19
16	2.1599.019.0	12	shoulder ring 19.5x31x2
17	0.052.1432.3/10	12	rocker arm
18	2.1559.021.0/40	2	bushing 15x19x22
19	2.1011.405.2	12	nut m 8 p.1
20	0.052.1430.0	6	support
21	2.1310.006.2	6	flat washer 10.5x21

Section: ENGINE  
CYLINDER HEAD

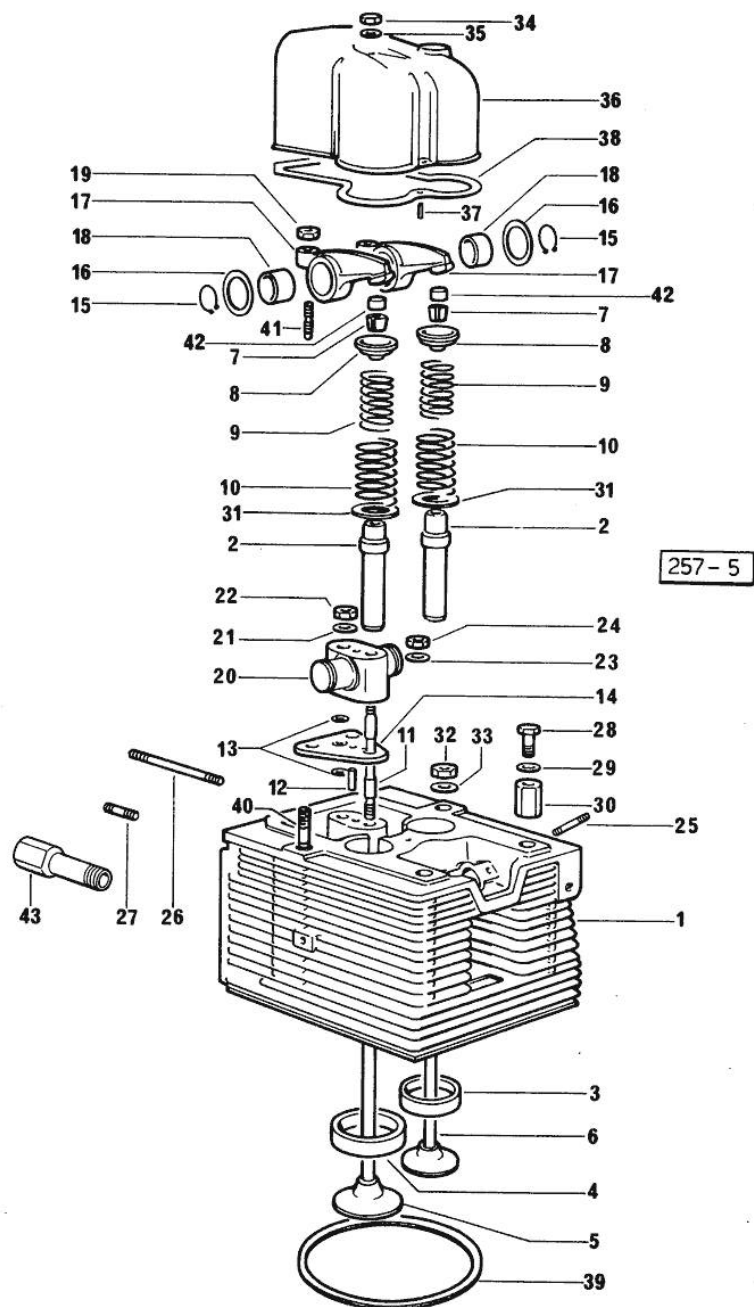


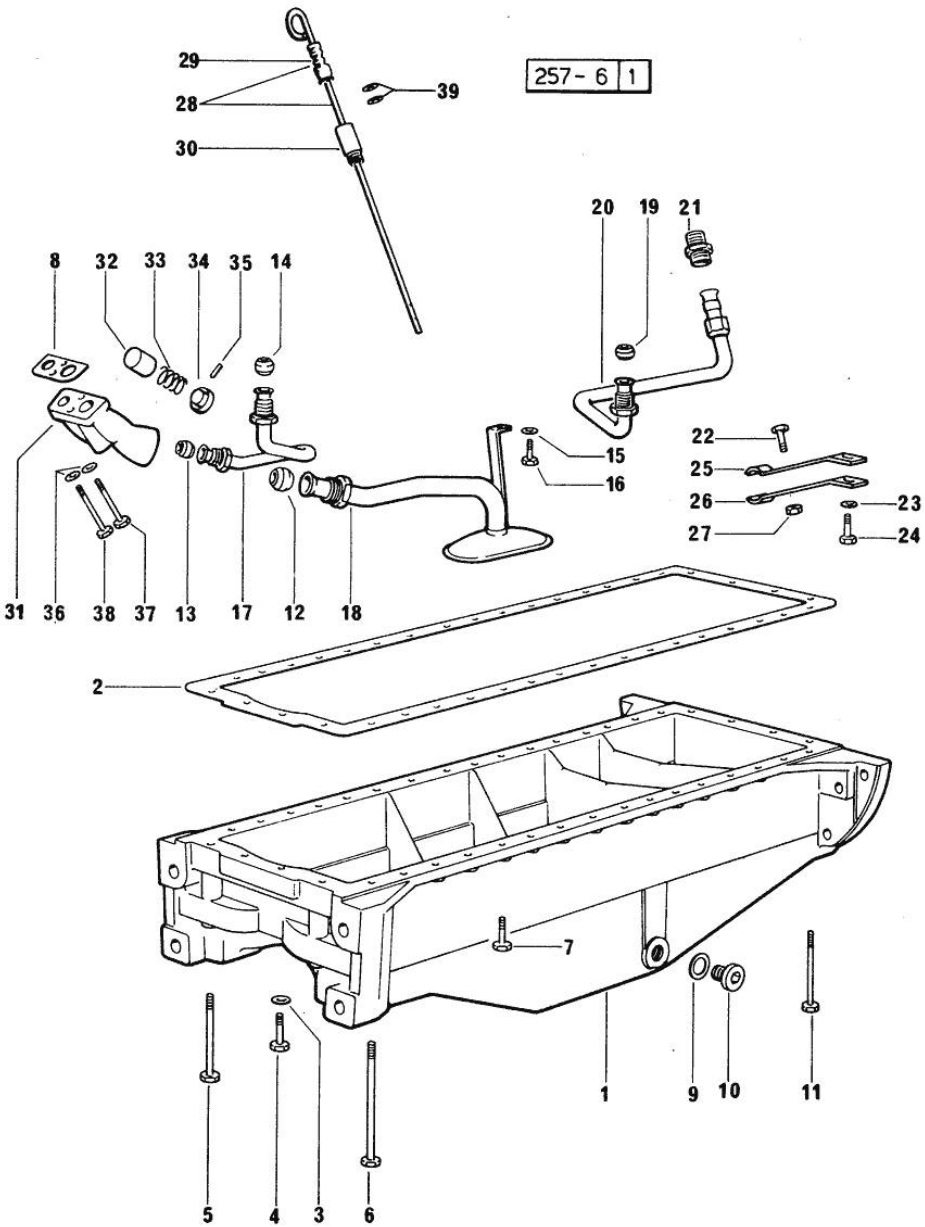
Fig.	P/n	QTY	Name
22	2.1099.035.0	6	special nut m 10 p.1.25
23	2.1599.160.0	6	washer 10.5x19x4
24	2.1011.421.2	6	nut m 10 p.1.25
25	2.0439.111.1/20	12	stud bolt
26	2.0439.113.7	6	stud bolt m 8 p.1.25 - 1.00 x 110
26	2.0439.143.7	5	stud bolt m 8 p.1.25 x 90
26	2.0439.157.7	6	stud bolt m 8 p.1.25 - 1.00 x 100
27	2.0439.110.7	2	stud bolt m 8 x 30 -> 1200
28	2.0119.053.1	4	screw
29	2.1310.007.2	4	flat washer 13 x 24
30	2.1019.037.0	4	special nut m 12 p.1.5
31	2.1599.411.2	12	shoulder ring
32	2.1019.025.0	20	special nut m 12 p.1.5
33	2.1599.144.7	24	shoulder ring 12.5x23x4
34	2.1099.056.2	6	special nut m 8 p.1 x 8
35	2.1560.004.0	6	copper gasket 8.2 x 14
36	0.052.1440.0	6	small cap
37	2.1630.208.0	6	roll pin 3x16
38	0.052.1453.0/20	6	tappet gasket
39	2.1589.157.0	6	shoulder ring
40	2.0439.169.7	4	stud bolt
41	0.021.1434.0	12	screw
42	0.062.1452.0	12	small cover
43	0.071.1450.0/10	1	pipe fitting

Section: ENGINE  
**LUBRICATION**

Fig.	P/n	QTY	Name
------	-----	-----	------

Notes:  
 [GALAXI 170]

1	0.071.1510.0	1	oil sump
2	0.037.1512.0	1	gasket
3	2.1560.004.0	4	copper gasket 8.2 x 14
4	2.0112.217.2	2	screw m 8 p.1.25 x 45
5	2.0112.231.2	2	screw m 8 p.1.25 x 110
6	2.0112.244.2	2	screw m 8 p.1.25 x 180
7	2.0112.215.2	30	screw m 8 p.1.25 x 40
8	0.037.1557.0/20	1	gasket
9	2.1560.054.0	1	gasket 21 x 26
10	2.3199.001.2	1	plug 1/2" gas
11	2.0112.237.2	4	screw m 8 p.1.25x140
12	2.3359.017.1	1	nosepiece
13	2.3359.016.1	1	nosepiece
14	2.3359.015.1	1	nosepiece
15	2.1310.004.2	1	flat washer 8.4x17
16	2.0112.204.2	1	screw m 8 p.1.25x14
17	0.044.1560.2	1	tube
18	0.046.1531.3	1	tube
19	2.3359.015.1	1	nosepiece
20	0.046.1543.2/10	1	tube
21	2.3339.159.1/10	1	pipe fitting
22	2.0112.207.2	1	screw m 8 p 1.25 x 20
23	2.1310.004.2	1	flat washer 8.4x17
24	2.0112.207.2	1	screw m 8 p 1.25 x 20
25	0.046.1551.0	1	bracket
26	0.046.1550.0	1	bracket
27	2.1011.105.2	1	nut m 8 p.1.25
28	0.042.1513.2	1	dipstick
29	0.034.1551.0	1	gasket
30	0.044.1555.0	1	spacer
31	0.052.1530.0	1	tip
32	0.052.1571.0	1	small piston
33	2.4019.270.1	1	spring 9.7x54x2
34	0.054.1558.0/20	1	stop
35	2.1630.213.0	1	roll pin 3x32
36	2.1480.014.1	2	washer 8
37	2.0112.225.2	1	screw m 8 p.1.25 x 80
38	2.0112.231.2	1	screw m 8 p.1.25 x 110
39	2.1539.065.0	2	special oil seal 8.73 x 1.78





**Suggest:**

**For more complete manuals. Please go to the home page.**

**<https://www.ebooklibonline.com>**

**If the above button click is invalid. Please download this document first, and then click the above link to download the complete manual.**

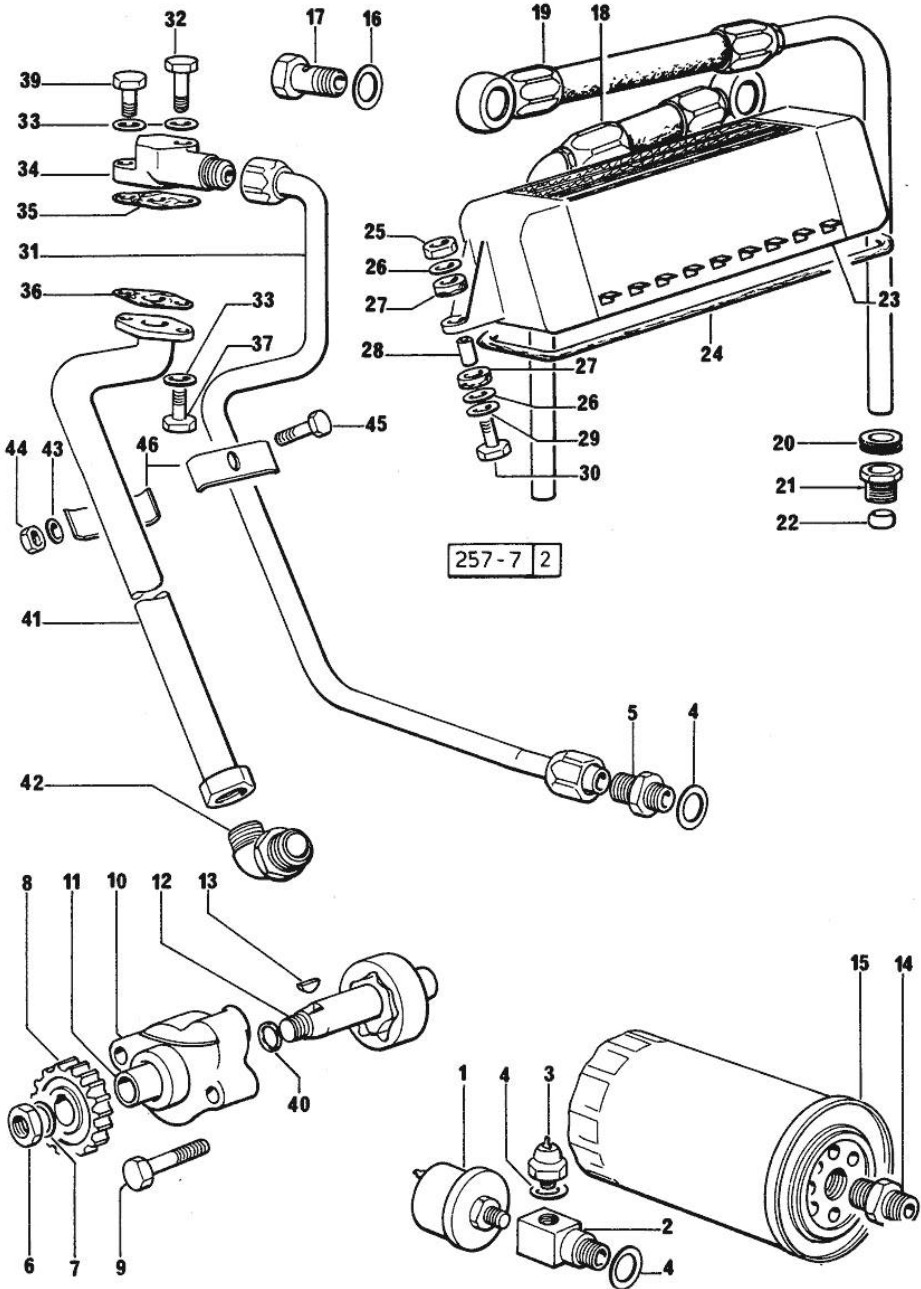
**Thank you so much for reading**

Section: ENGINE  
LUBRICATION

Fig.	P/n	QTY	Name
------	-----	-----	------

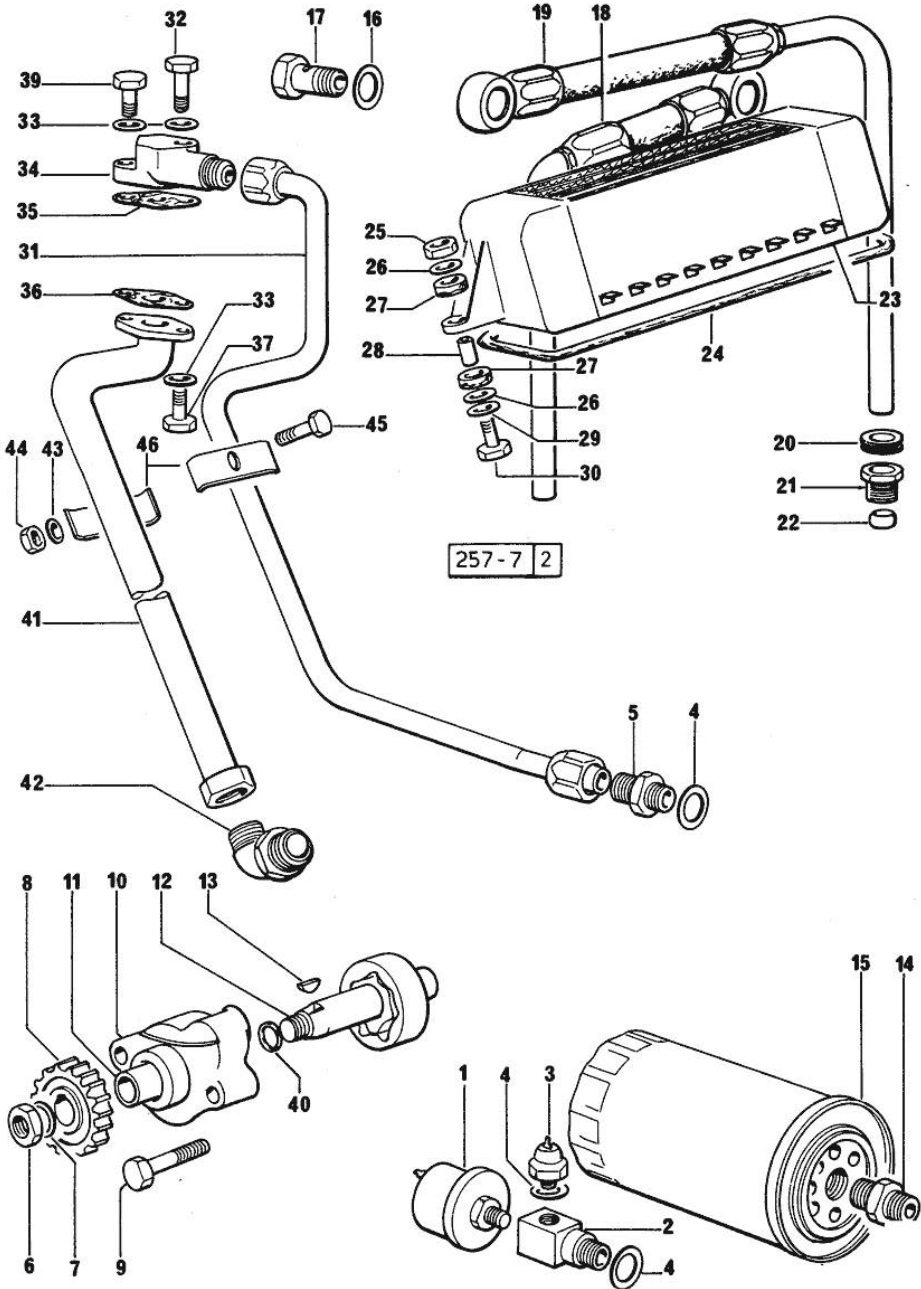
Notes:  
[GALAXI 170]

1	2.7099.270.0	1	device
2	0.071.1554.0	1	pipe fitting
3	2.7099.460.0	1	pressure switch
4	2.1560.008.0	3	gasket 12.2 x 18
5	2.3339.214.2	1	pipe fitting
6	2.1121.109.2	1	self-locking nut m 12 p.1.25
7	2.1310.007.2	1	flat washer 13 x 24
8	0.040.1521.0/10	1	gear z = 27
9	2.0112.219.2	2	screw m 8 p.1.25x55
10	0.071.1524.6	1	oil pump
11	2.1559.166.0	1	special bushing
12	0.071.1524.6	1	oil pump
13	2.1720.005.0	1	key 4x5
14	2.3339.094.1/10	1	pipe fitting m 20 p.1.5-3/4 gas
15	0.052.1565.0	1	oil filter element
16	2.1560.018.0	6	gasket 22.2 x 29
17	2.3339.107.1	2	pipe union m 22
18	0.071.1555.2	1	tube
19	0.071.1556.2/10	1	tube
20	2.6560.013.0	2	wire guide 18x1.5
21	2.3339.167.2	2	pipe fitting
22	2.3359.012.0	2	nosepiece 10x16.8
23	0.074.1540.2	1	oil cooler
24	0.052.1541.0	1	gasket
25	2.1011.105.2	2	nut m 8 p.1.25
26	2.1599.006.2	4	shoulder ring 8.4x25x2
27	0.021.1560.0	4	rubber plug
28	2.1579.159.2	2	spacer 8.8x12x16
29	2.1310.004.2	2	flat washer 8.4x17
30	2.0122.213.2	2	screw m 8 p.1x35
31	0.071.1550.2/10	1	tube 1167 <-
31	0.071.1558.2	1	tube => 1200 - (...) <=
31	0.071.1558.2/10	1	tube (...) <-
31	0.074.1550.2	1	tube -> 1168 1199 <=
32	2.0112.213.2	1	screw m 8 p.1.25 x 35
33	2.1470.004.2	4	lock washer 8
34	0.062.1550.0	1	flange



LUBRICATION

Fig.	P/n	QTY	Name
35	0.052.1557.0	1	gasket
36	0.052.1558.0/10	1	gasket
37	2.0112.207.2	2	screw m 8 p 1.25 x 20
39	2.0112.207.2	1	screw m 8 p 1.25 x 20
40	2.1530.043.0	1	oil seal 17.13x2.62
41	0.071.1551.3/10	1	tube 1167 <-
41	0.071.1557.3	1	tube -> 1200
41	0.074.1551.3	1	tube -> 1168 1199 <=
42	2.3261.119.2	1	pipe fitting
42	2.3264.125.2	1	pipe fitting
43	2.1470.002.2	1	lock washer 6
44	2.1011.103.2	1	nut m 6 p.1
45	2.0112.013.2	1	screw m 6 p.1 x 35
46	0.9015.270.0	2	bracket



**<https://www.ebooklibonline.com>**

Hello dear friend!

Thank you very much for reading.

Enter the link into your browser.

The full manual is available for immediate download.

**<https://www.ebooklibonline.com>**