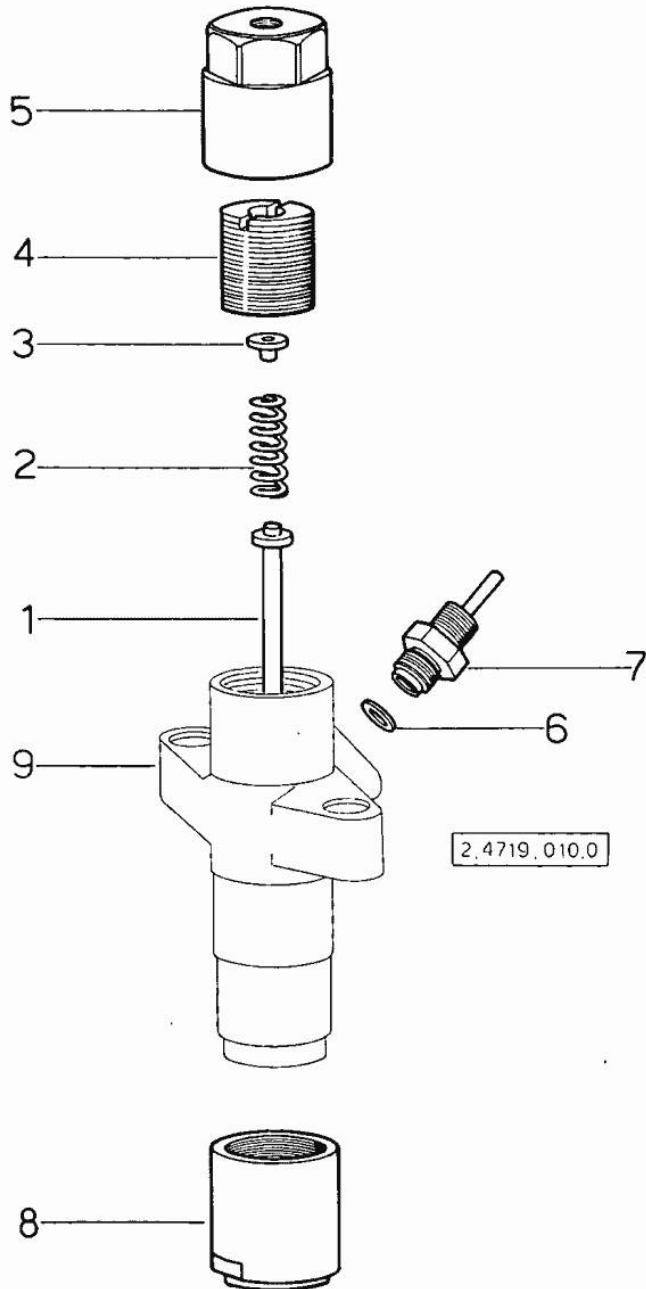


Section: ENGINE

INJECTOR NOZZLE HOLDER COMPONENTS

Fig.	P/n	QTY	Name
0	2.4719.010.0	1	nozzle holder BOSCH "BOSCH" 0.431.202.133 ☞ 2.4719.010.0
1	2.4719.010.1	1	pin "BOSCH" 2.433.124.302
2	2.4719.010.2	1	spring "BOSCH" 2.434.619.028
3	2.4719.010.3	1	bush "BOSCH" 2.430.120.002
4	2.4719.010.4	1	ring nut "BOSCH" 2.433.462.044
5	2.4719.010.5	1	small cap "BOSCH" 2.433.317.028
6	2.4719.010.7	1	gasket "BOSCH" 2.430.100.040
7	2.4719.010.6	1	pipe fitting "BOSCH" 2.433.357.033
8	2.4719.010.8	1	ring nut "BOSCH" 2.433.314.059
9	0.000.0000.1		cannot be supplied



INJECTION PUMP PARTS

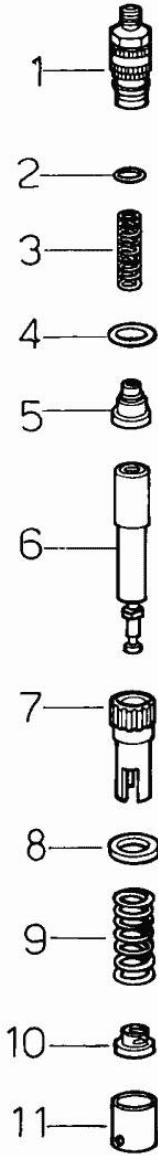
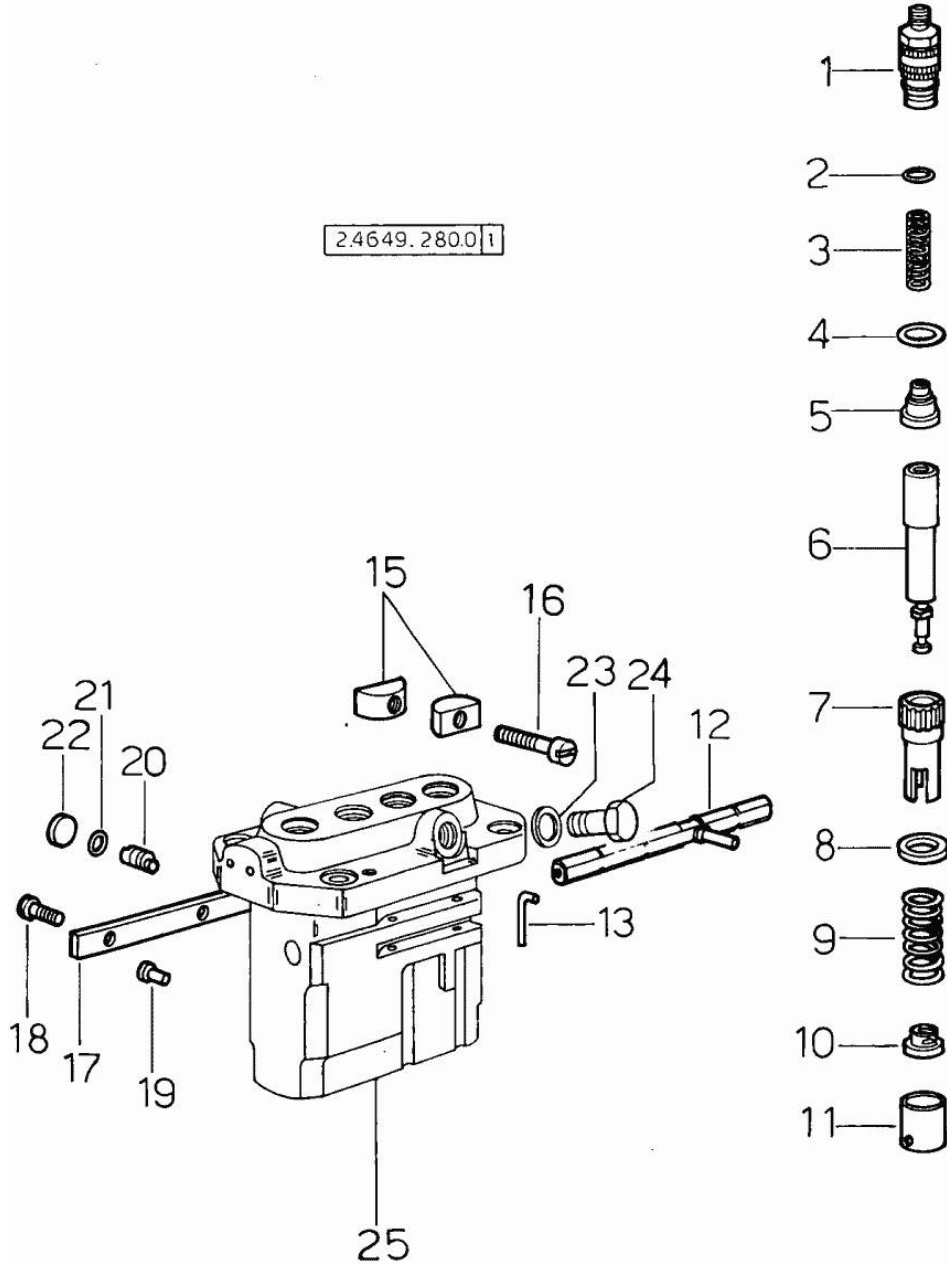


Fig.	P/n	QTY	Name
0	2.4649.280.0	1	injector pump "BOSCH 0.414.184.001" ☞ 2.4649.280.0
1	2.4629.150.3	4	bush "BOSCH 1.413.370.045"
2	2.4629.150.4	4	gasket "BOSCH 1.900.210.112"
3	2.4629.150.5	4	spring "BISCH 1.414.611.024"
4	2.4629.150.6	4	gasket "BOSCH 1.410.105.001"
5	2.4629.150.1	4	rod "BOSCH 1.418.502.013"
6	2.4629.150.8	4	pumping element "BOSCH 3.418.301.003"
7	2.4629.151.7	4	bush "BOSCH 1.416.300.003"
8	2.4629.151.6	4	washer "BOSCH 1.410.501.000"
9	2.4629.150.9	4	spring "BOSCH 1.414.618.021"
10	2.4629.151.0	4	cap-washer "BOSCH 1.410.122.017"
11	2.4629.151.1	4	tappets "BOSCH 1.418.700.009"
12	2.4649.280.2	1	rod "BOSCH 3.416.004.001"
13	2.4649.280.4	2	pin "BOSCH 3.414.720.001"
15	2.4629.010.2	3	terminal 'BOSCH 1.400.023.001'
16	2.4649.280.6	3	screw 'BOSCH 2.910.022.204'
17	2.4649.280.3	1	small plate 'BOSCH 3.411.032.000'
18	2.4649.280.5	2	screw 'BOSCH 2.910.511.150'
19	2.4649.281.0	4	plug 'BOSCH 1.413.121.010'
20	2.4649.280.7	4	pin 'BOSCH 3.413.180.000'
21	2.4649.280.8	4	oil seal 'BOSCH 3.410.210.004'
22	2.4649.280.9	4	plug

INJECTION PUMP PARTS

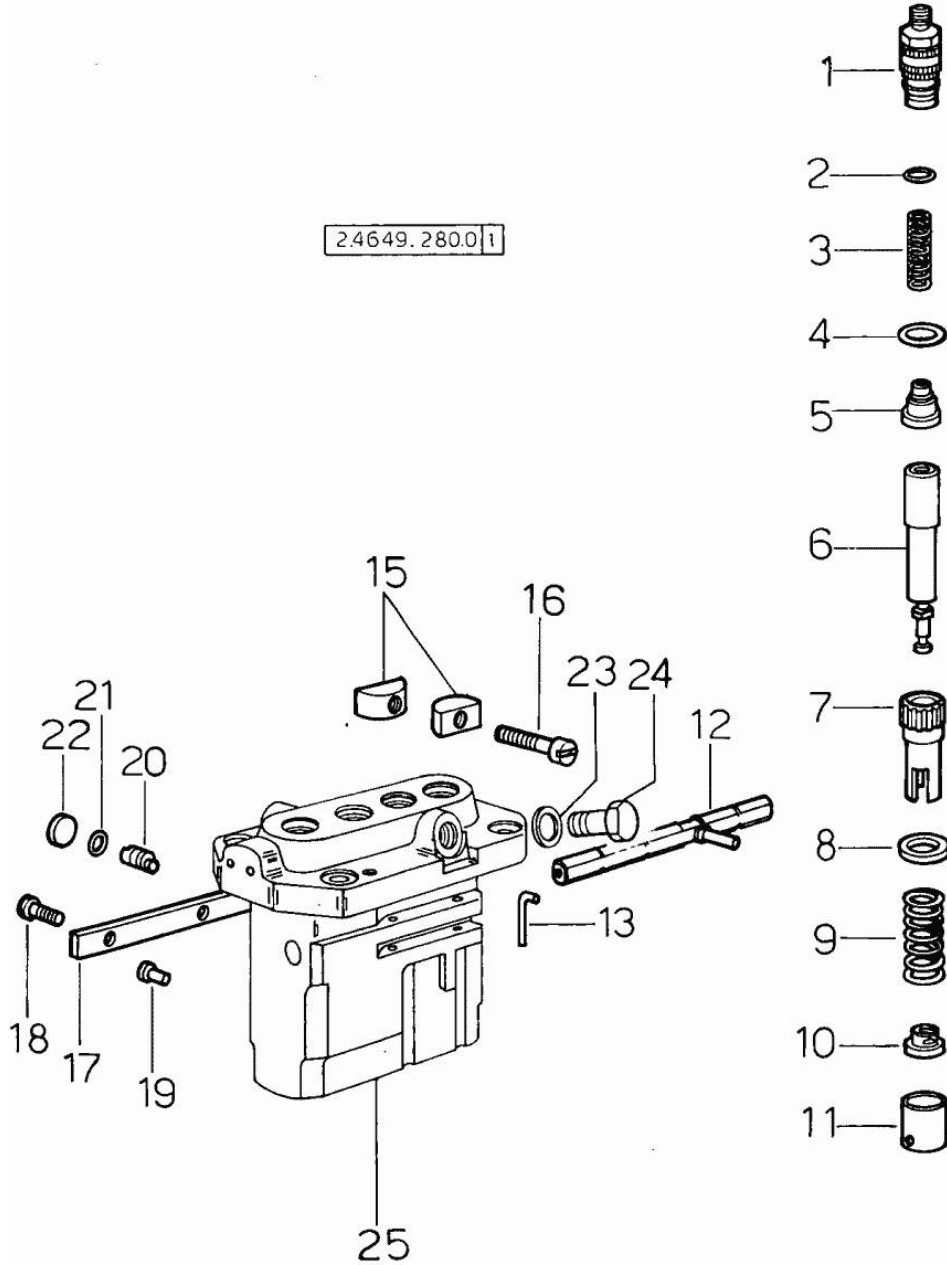


Fig.	P/n	QTY	Name
1			'BOSCH 1.410.555.005'
23	2.1560.007.0	1	gasket 12.2x16
24	2.3110.402.1	1	plug m 12 p.1.5x10
25	0.000.0000.1		cannot be supplied

<https://www.ebooklibonline.com>

Hello dear friend!

Thank you very much for reading.

Enter the link into your browser.

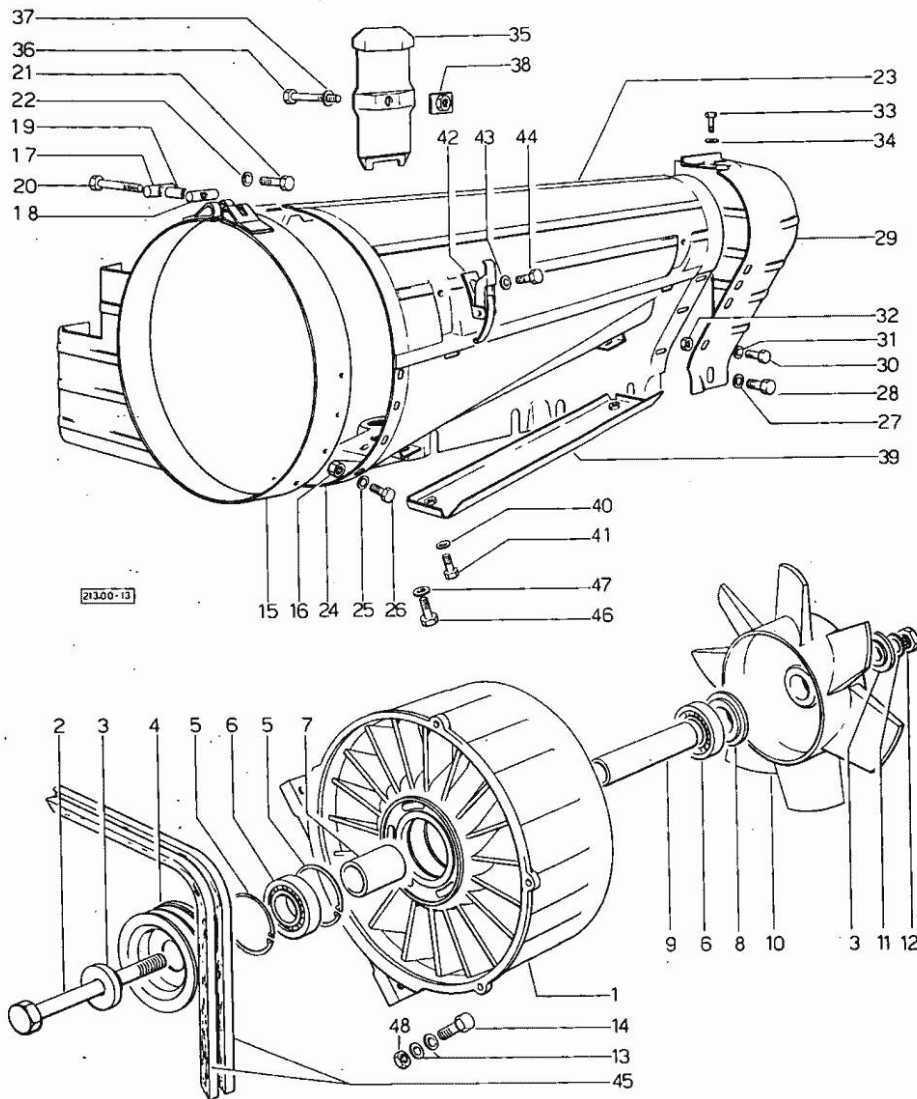
The full manual is available for immediate download.

<https://www.ebooklibonline.com>

Section: ENGINE

AIR COOLING

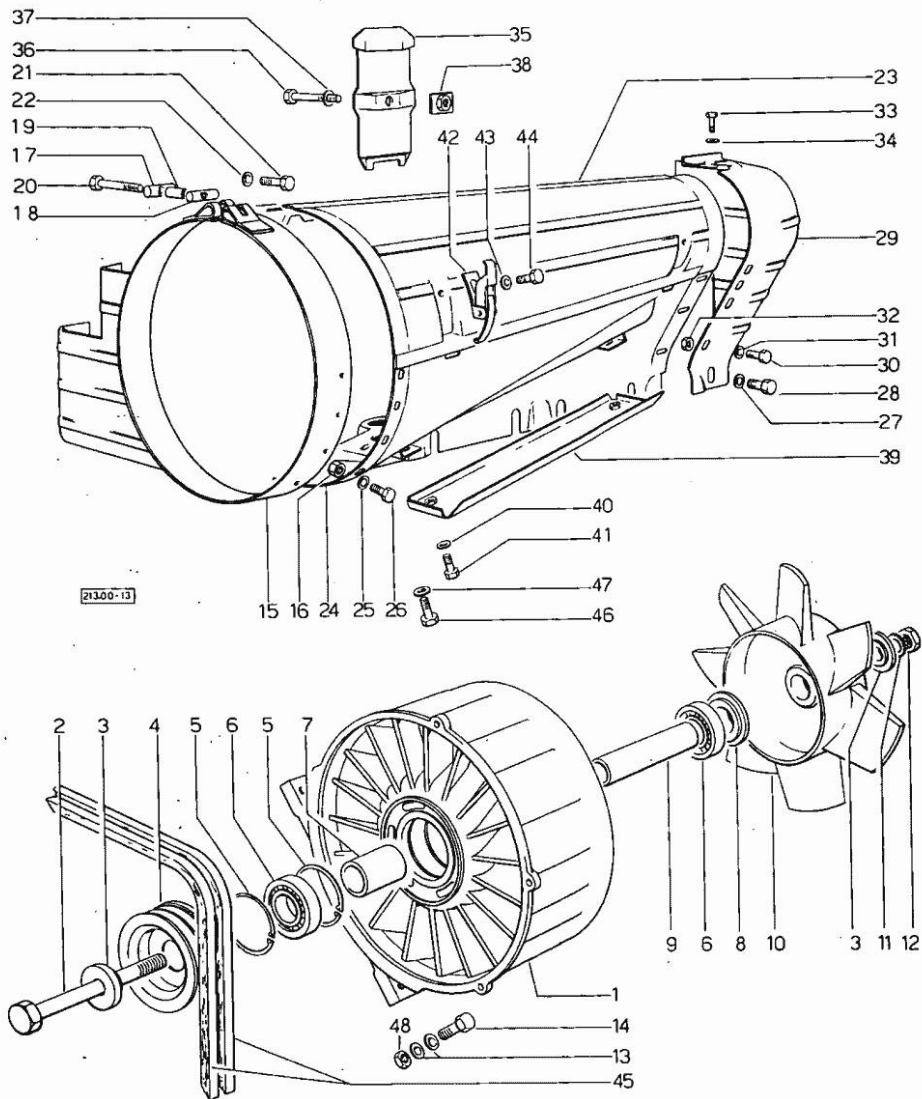
Fig.	P/n	QTY	Name
1	0.045.1730.3	1	ventilator body
2	2.0122.545.2	1	screw m 14 p.1.5x190
3	0.037.1752.0	2	shoulder ring
3	2.9619.082.3	1	screw
4	0.040.1735.0	2	pulley
5	2.1411.025.1	2	circlip 62
6	2.2041.012.0	1	ball bearing iso 30 bc 02
7	2.1579.167.2	1	spacer 30.8x36x64
8	0.037.1751.0	1	spacer
9	0.037.1734.0	1	pin
10	0.037.1736.0	1	fan
11	2.1470.008.2	1	lock washer 14
12	2.1011.408.1	1	nut m 14 p.1.5
13	2.1310.004.2	7	flat washer 8.4x17
14	2.0112.207.2	1	screw m 8 p 1.25 x 20
14	2.0112.213.2	3	screw m 8 p.1.25 x 35
15	0.044.1719.3/30	1	duct
16	2.1011.103.2	4	nut m 6 p.1
17	0.000.2897.0	1	pin 12x30
18	0.000.2898.0	1	pin 12x30
19	2.1579.161.0	1	spacer 9x12x14.5
20	2.0112.221.2	1	screw m 8 p.1.25 x 60
21	2.0112.204.2	4	screw m 8 p.1.25x14
22	2.1310.004.2	4	flat washer 8.4x17
23	0.044.1750.2/20	1	cover
24	0.044.1713.2/10	1	cover
25	2.1310.002.2	4	flat washer 6.4x12.5
26	2.0112.004.2	4	screw m 6 p.1 x 14
27	2.1310.004.2	7	flat washer 8.4x17
28	2.0112.204.2	7	screw m 8 p.1.25x14
29	0.047.1716.2/10	1	cover
30	2.0112.004.2	3	screw m 6 p.1 x 14
31	2.1310.002.2	3	flat washer 6.4x12.5
32	2.1011.103.2	3	nut m 6 p.1
33	2.0112.002.2	2	screw m 6 p.1 x 10
34	2.1310.002.2	2	flat washer 6.4x12.5
35	0.040.1752.0/10	3	baffle
36	2.0119.074.2	3	screw
37	2.1310.004.2	3	flat washer 8.4x17
38	0.046.1750.2	3	small plate
39	0.044.1751.2/10	1	baffle
40	2.1310.004.2	2	flat washer 8.4x17
41	2.0112.204.2	2	screw m 8 p.1.25x14
42	0.040.1751.0	2	hook



Section: ENGINE

AIR COOLING

Fig.	P/n	QTY	Name
43	2.1310.002.2	2	flat washer 6.4x12.5
44	2.0112.002.2	2	screw m 6 p.1 x 10
45	2.4119.042.0	2	vee belt
46	2.0122.213.2	2	screw m 8 p.1x35
47	2.1310.004.2	2	flat washer 8.4x17
48	2.1011.105.2	3	nut m 8 p.1.25



Section: ENGINE

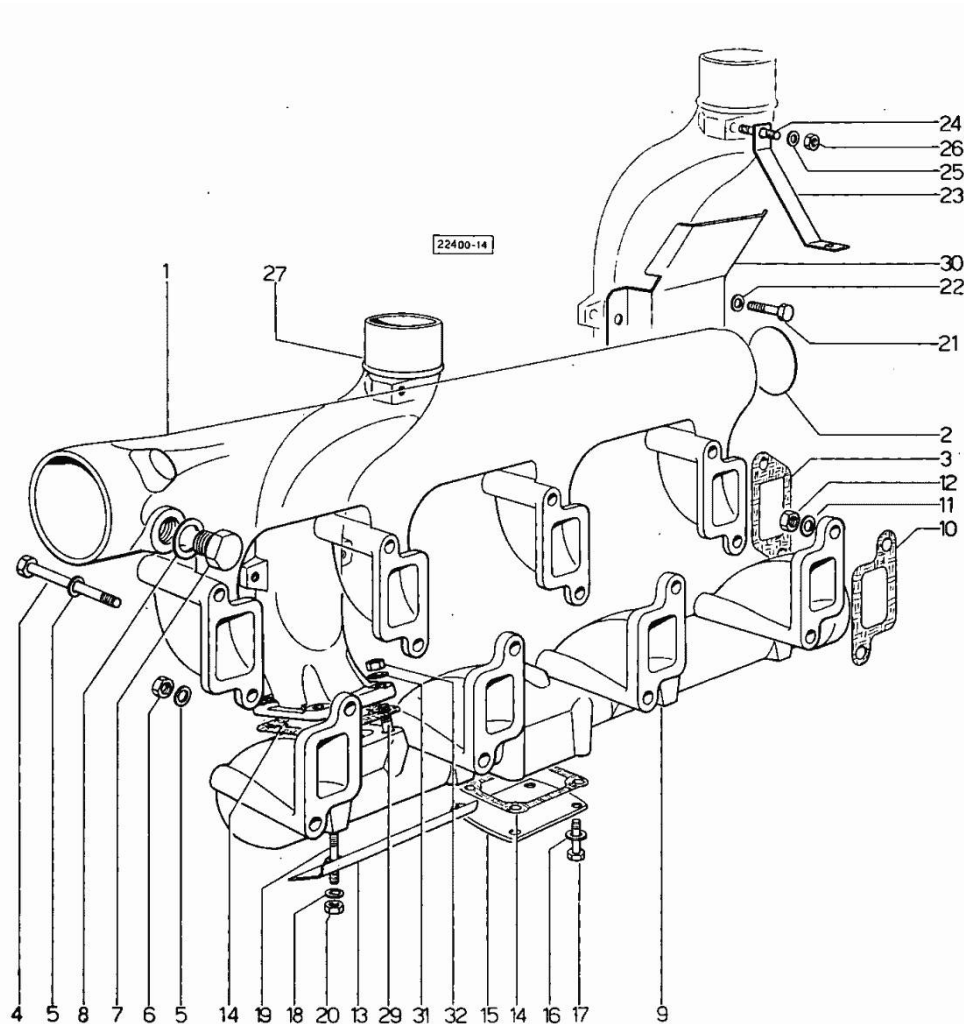
INTAKE AND EXHAUST

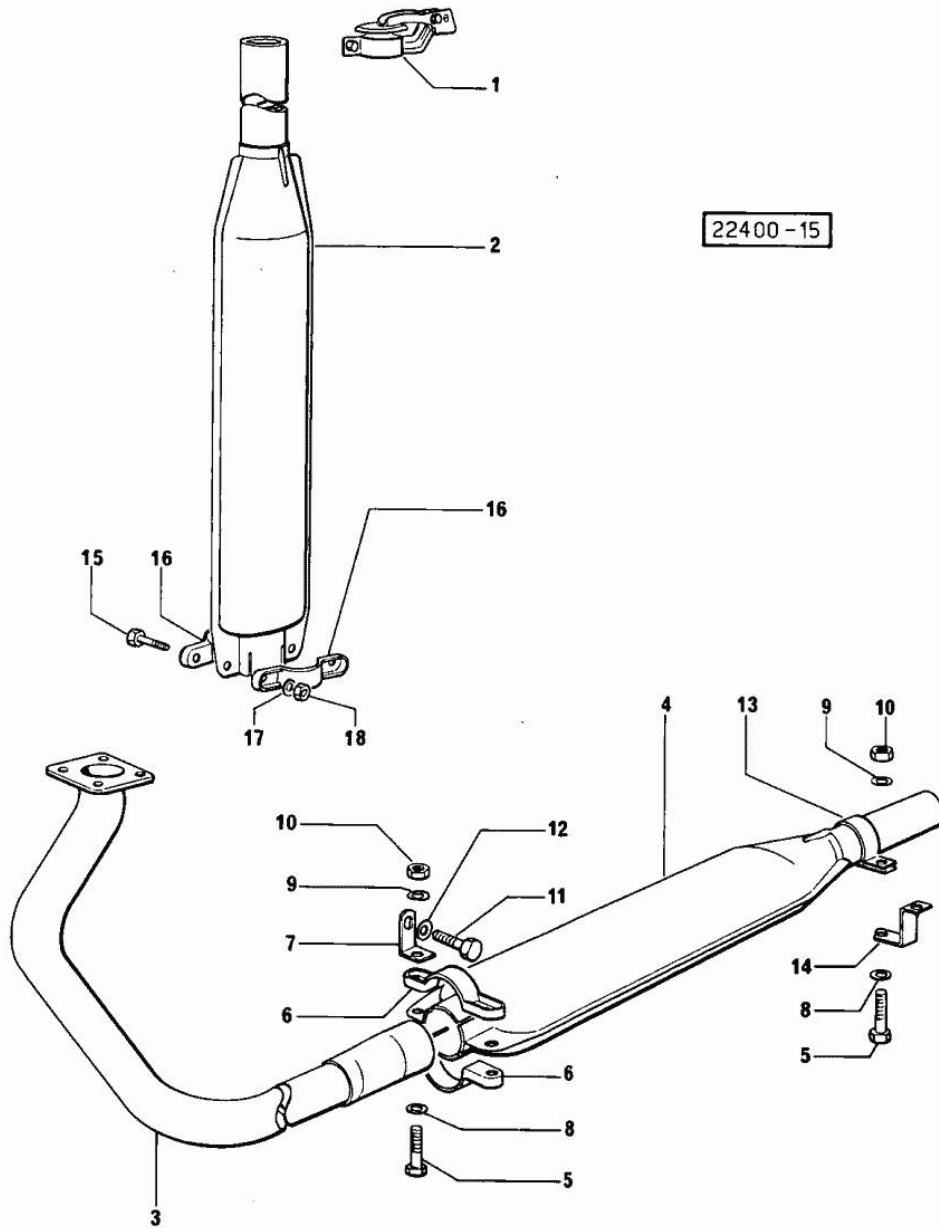
Fig.	P/n	QTY	Name
1	0.044.1850.3	1	intake manifold
2	2.3170.020.1	1	expansion plug 50
3	0.029.1855.0	4	gasket
4	2.0112.227.2	4	screw m 8 p.1.25 x 90
5	2.1474.009.1	8	spring washer 8
6	2.1011.305.2	4	nut
7	2.3110.406.1	1	plug m 20 x 16
8	2.1560.016.0	1	gasket 20.2 x 26
9	0.045.1853.0	1	exhaust manifold
FOR TYPES WITH HORIZONTAL SILENCER			
9	0.045.1853.6	1	exhaust manifold
10	0.029.1856.0	4	gasket
11	2.1310.004.2	8	flat washer 8.4x17
12	2.1019.033.0	8	special nut m 8 p.1
13	0.044.1853.0/20	1	small guard
14	0.044.1857.0/10	3	gasket
15	0.044.1855.0/10	2	small cover
16	2.1310.006.2	8	flat washer 10.5x21
17	2.0112.307.2	8	screw m 10 p.1.5 x 20
18	2.1310.004.2	2	flat washer 8.4x17
19	2.0439.081.1	2	stud bolt m 8 x 14
20	2.1011.505.2	2	nut m 8 p.1
21	2.0112.204.2	2	screw m 8 p.1.25x14
22	2.1310.004.2	2	flat washer 8.4x17
23	0.054.1858.0	1	old part number
24	2.0432.153.1	1	stud bolt m 10 p.1.5 / p.1.25 x 20
25	2.1310.006.2	1	flat washer 10.5x21
26	2.1019.015.0	1	special nut m 10 p.1.25
27	0.044.1860.0	1	exhaust manifold
29	2.0432.157.1	4	stud bolt m 10 p 1.5 - 1.25 x 30
30	0.045.1850.0/10	1	shield
31	2.1310.006.2	4	flat washer 10.5x21
32	2.1019.015.0	4	special nut m 10 p.1.25

Section: ENGINE

EXHAUST PIPE

Fig.	P/n	QTY	Name
1	0.194.5640.4	1	small cover
2	0.190.5657.3	1	silencer
3	0.226.5625.2	1	exhaust pipe
4	0.203.5610.3	1	silencer
5	2.0112.209.2	3	screw m 8 p 1.25 x 25
6	0.190.5663.0	2	clamp
7	0.226.5651.0	1	old part number
8	2.1310.004.2	3	flat washer 8.4x17
9	2.1470.004.2	3	lock washer 8
10	2.1011.105.2	3	nut m 8 p.1.25
11	2.0112.609.2	1	screw m 16 p.2 x 25
12	2.1310.010.2	1	flat washer 17x30
13	0.203.5651.0	1	clamp
14	0.226.5650.0	1	old part number
15	2.0122.363.2	2	screw m 10 p.1.25 x 35
16	0.190.5659.0/10	2	clamp
17	2.1470.006.2	2	lock washer 10
18	2.1019.015.0	2	special nut m 10 p.1.25

22400-15



Section: ENGINE

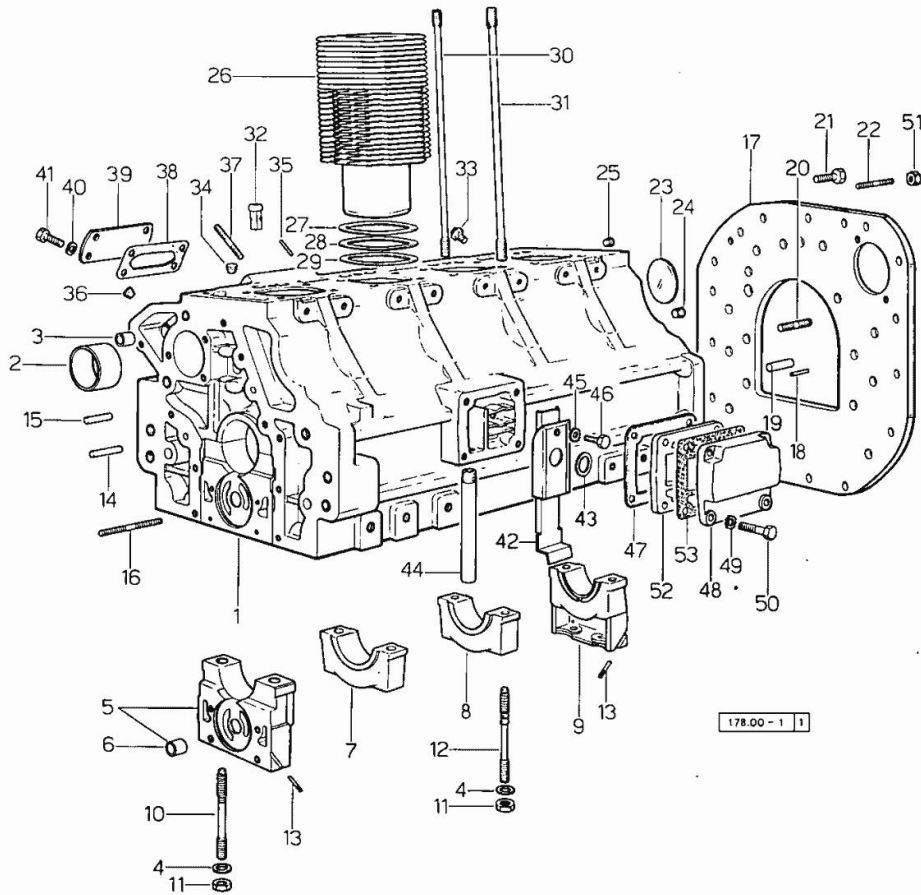
CRANKCASE

Fig.	P/n	QTY	Name
0	0.044.0050.6	1	gasket set FOR ENGINE ASSEMBLY
1	0.044.1110.4/60	1	crankcase
2	0.037.1155.0	1	bushing
3	2.1559.111.0	2	bushing 12x14x10
4	2.1599.144.7	10	shoulder ring 12.5x23x4
5	0.036.1112.6	1	support
6	2.1559.090.0/10	1	bushing 14.24x19.06x27
7	0.037.1114.0	1	support
8	0.029.1113.0	2	support
9	0.029.1116.0	1	support
10	0.021.1157.0	4	stud bolt
11	2.1019.026.7	10	special nut m 12 p.1.5
12	0.029.1117.0	6	stud bolt
13	0.029.1154.0	4	gasket
14	2.1699.114.0	1	pin 8x55
15	2.1653.711.0	1	pin
16	2.0432.025.1	2	stud bolt m 8 p 1.25-1x100
17	0.044.1130.0	1	flange
18	2.1653.708.0	2	pin 8x18
19	2.1652.911.0	1	cylindrical plug 12x25
20	2.0432.153.1	1	stud bolt m 10 p.1.5 / p.1.25 x 20
21	2.0112.513.1	11	screw m 14 p.2 x 35
22	2.0432.255.1	2	stud bolt m 12 p.1.75 - 12 p.1.25x25
23	2.3170.022.1	1	expansion plug 60
24	2.3130.003.1	2	plug 3/8" gas
25	2.3130.002.1	1	plug 1/4" gas
26	0.044.1120.0/10	4	engine cylinder
27	2.1589.052.0	8	shoulder ring 115x123x0.2
28	2.1589.051.0	4	shoulder ring 116x123x0.1
29	2.1569.076.0	4	gasket 116x123x0.5
30	0.041.1123.0	4	stud bolt m 10
31	0.039.1122.0	16	stud bolt m 12 p.1.5x310
32	0.044.1156.0	8	special bushing
33	0.041.1151.3/10	4	sprayer nozzle
34	2.3130.001.1	4	plug 1/8" gas
35	2.1653.507.0	2	pin
36	2.3139.001.1	5	plug
37	2.0432.003.1	4	stud bolt m 8 p.1.25 / p.1 x 20
38	0.044.1151.0	1	gasket
39	0.044.1164.2	1	small cover
40	2.1310.004.2	4	flat washer 8.4x17
41	2.0112.204.2	4	screw m 8 p.1.25x14
42	0.044.1162.2	1	small guard

Section: ENGINE

CRANKCASE

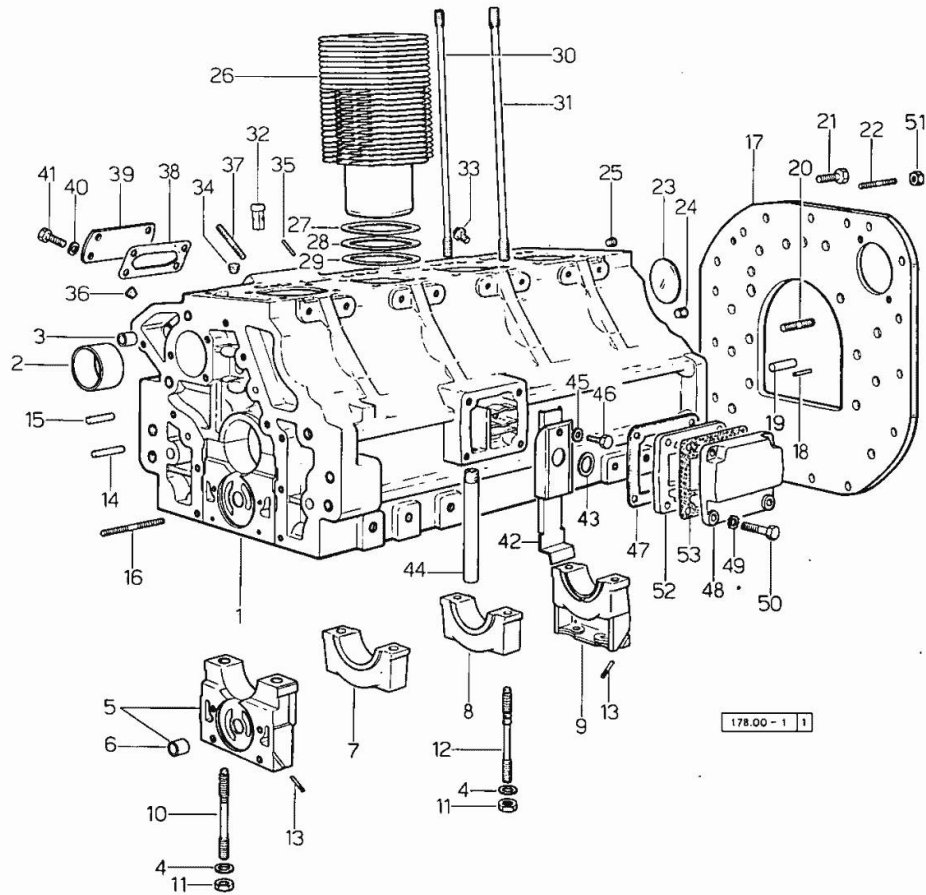


Fig.	P/n	QTY	Name
43	0.045.1150.0	1	oil seal
44	0.044.1152.0	1	tube
45	2.1474.009.1	1	spring washer 8
46	2.0312.206.2	1	screw m 8 p 1.25 x 20
47	0.044.1153.0/10	1	gasket
48	0.044.1163.0	1	cover
49	2.1474.009.1	4	spring washer 8
50	2.0112.211.2	4	screw m 8 p.1.25 x 30
51	2.1011.201.2	2	nut
52	0.044.1160.0	1	container
53	0.044.1161.0	1	gasket



Suggest:

For more complete manuals. Please go to the home page.

<https://www.ebooklibonline.com>

If the above button click is invalid. Please download this document first, and then click the above link to download the complete manual.

Thank you so much for reading

Section: ENGINE

TIMING CASE

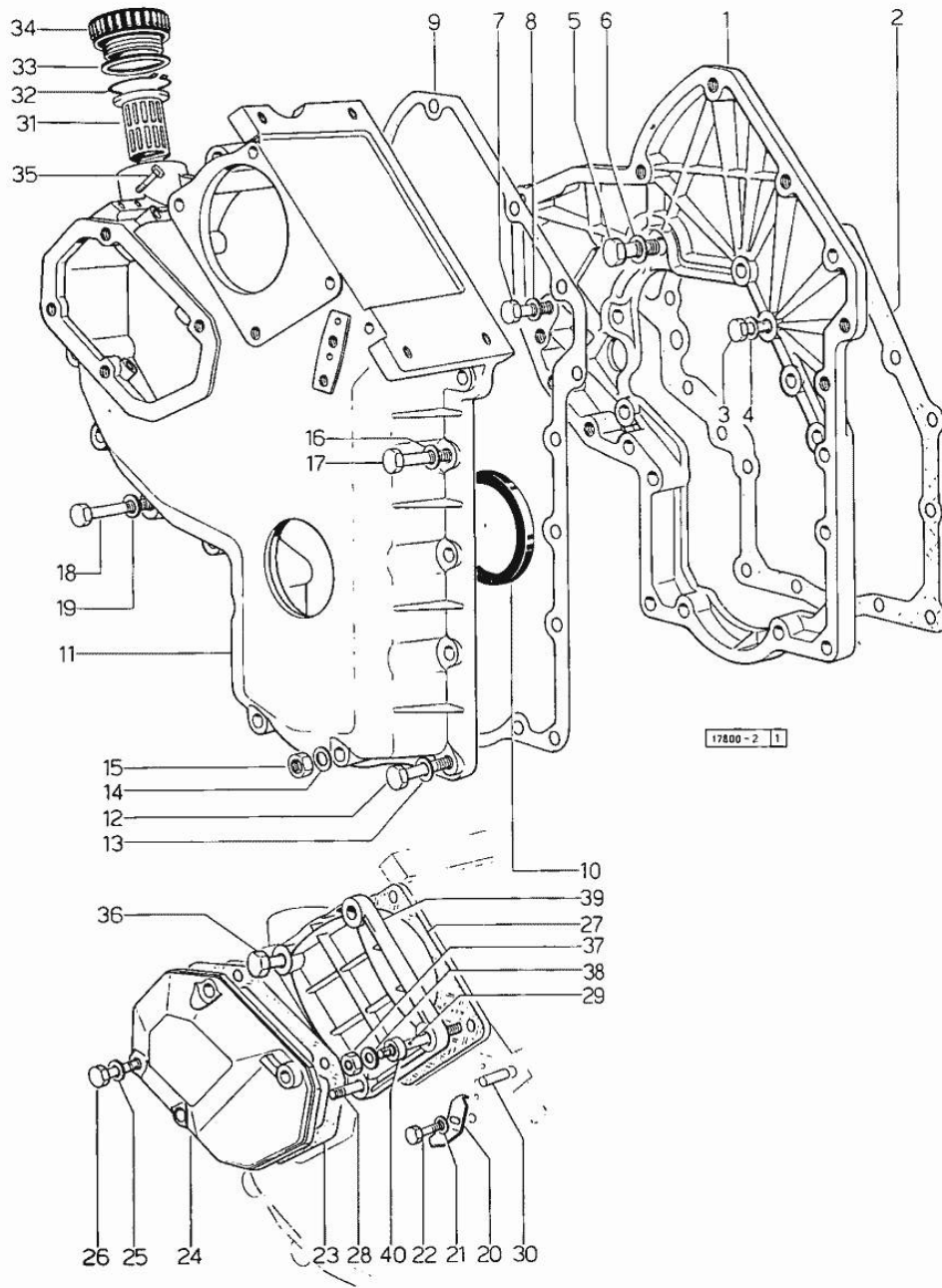


Fig.	P/n	QTY	Name
1	0.048.1131.0	1	flange
2	0.041.1153.0	1	gasket
3	2.0112.209.2	5	screw m 8 p 1.25 x 25
4	2.1474.009.1	5	spring washer 8
5	2.0119.034.1	1	screw m 14 p.2x20
6	2.1560.010.0	1	gasket 14.2 x 20
7	2.0112.207.2	1	screw m 8 p 1.25 x 20
8	2.1474.009.1	1	spring washer 8
9	0.041.1152.0	1	gasket
10	2.1519.010.0	1	special oil seal 58x80x10
11	0.048.1132.0/30	1	guard
12	2.0112.217.2	5	screw m 8 p.1.25 x 45
13	2.1474.009.1	5	spring washer 8
14	2.1560.003.0	2	copper gasket 8.2 x 12
15	2.1011.405.2	2	nut m 8 p.1
16	2.1474.009.1	2	spring washer 8
17	2.0112.211.2	2	screw m 8 p.1.25 x 30
18	2.0112.222.2	4	screw m 8 p.1.25x65
19	2.1474.009.1	4	spring washer 8
20	0.041.1158.0	1	index
21	2.1310.004.2	1	flat washer 8.4x17
22	2.0112.204.2	1	screw m 8 p.1.25x14
23	0.048.1152.0	1	gasket
24	0.048.1150.0/20	1	cover
25	2.1560.005.0	4	copper gasket 10.2 x 14
26	2.0112.313.2	1	screw m 10 p.1.5 x 35
26	2.0112.315.2	3	screw m 10 p.1.5 x 40
27	0.041.1154.0	1	gasket
28	2.0432.015.1	1	stud bolt m 8 p 1.25 - m 8 p. 1x50
29	2.0432.028.1	2	stud bolt m 8 p.1.25-1x130
30	2.1653.717.0	1	pin 8 x 40
31	0.041.1159.0/10	1	filter
32	2.1411.012.1	1	circlip 30
33	2.1569.072.0	1	gasket 32 x 39.5 x 2
34	0.041.1135.0	1	plug
35	2.0119.081.2	2	screw
36	2.0112.235.2	1	screw m 8 p.1.25 x 130
37	2.1011.505.2	4	nut m 8 p.1
38	2.1310.004.2	4	flat washer 8.4x17
39	0.037.1151.0	1	cover
40	2.1579.191.0	4	spacer 8.5 x 18 x 20

Section: ENGINE

CRANKSHAFT

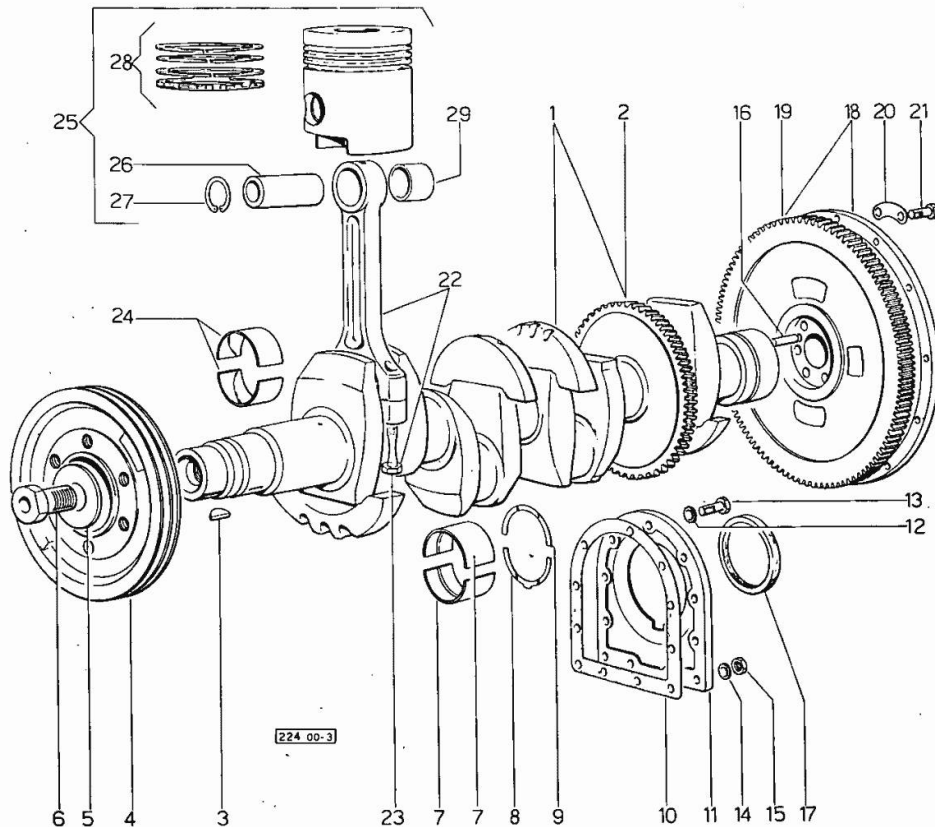


Fig.	P/n	QTY	Name
1	0.044.1267.3/20	1	crankshaft
1	0.044.1267.4/20	1	crankshaft
1	2.1630.611.0	1	roll pin 6 x 24
2	0.044.1265.0/10	1	gear
3	2.1799.002.0	1	stick 10x13
4	0.054.1250.0	1	pulley
5	0.001.6020.0	1	shoulder
6	2.0129.032.2	1	screw m 24 p.2x45
7	0.029.0066.0		main half bushing - mm 1.00
7	0.029.1215.0/10	10	main half bushing
7	0.029.1215.7		main half bushing - mm 0.25
7	0.029.1215.8		main half bushing - mm 0.50
7	0.029.1215.9		main half bushing - mm 0.75
8	0.001.4547.0		shoulder ring + mm 0.05
8	0.001.4548.0		shoulder ring + mm 0.10
8	0.001.4549.0		shoulder ring + mm 0.15
8	0.042.1219.0	2	shoulder ring STANDARD
9	0.001.4544.0		shoulder ring + mm 0.05
9	0.001.4545.0		shoulder ring + mm 0.10
9	0.001.4546.0		shoulder ring + mm 0.15
9	0.042.1218.0	2	shoulder ring STANDARD
10	0.029.1250.0	1	gasket
11	0.029.1240.0	1	flange
12	2.1474.010.1	7	spring washer 10
13	2.0112.309.2	7	screw m 10 p.1.5 x 25
14	2.1560.006.0	2	gasket 10.2 x 16
15	2.1011.421.2	2	nut m 10 p.1.25
16	2.1652.915.0	2	cylindrical plug 12x35
17	2.1519.009.0	1	special oil seal
18	0.039.1241.3	1	flywheel 11"
19	0.036.1242.0	1	crown wheel Z = 126, mm 15
20	2.1379.006.0	3	lock-tab 15x15x36,5
21	2.0122.515.7	6	screw
22	0.052.1220.3	4	engine connecting rod
23	0.039.1250.0	8	screw m 14 p.1.5x63
24	0.039.0068.0		con.rod half bushing - mm 1.016
24	0.039.1225.0	8	con.rod half bushing
24	0.039.1225.7		con.rod half bushing -mm 0.254
24	0.039.1225.8		con.rod half bushing -mm 0.508
24	0.039.1225.9		con.rod half bushing -mm 0.762
25	0.046.0060.6	4	complete piston
25	0.046.0061.6		complete piston + mm 0.5
25	0.046.0062.6		complete piston + mm 1.0
26	0.038.1236.0	4	piston pin

<https://www.ebooklibonline.com>

Hello dear friend!

Thank you very much for reading.

Enter the link into your browser.

The full manual is available for immediate download.

<https://www.ebooklibonline.com>