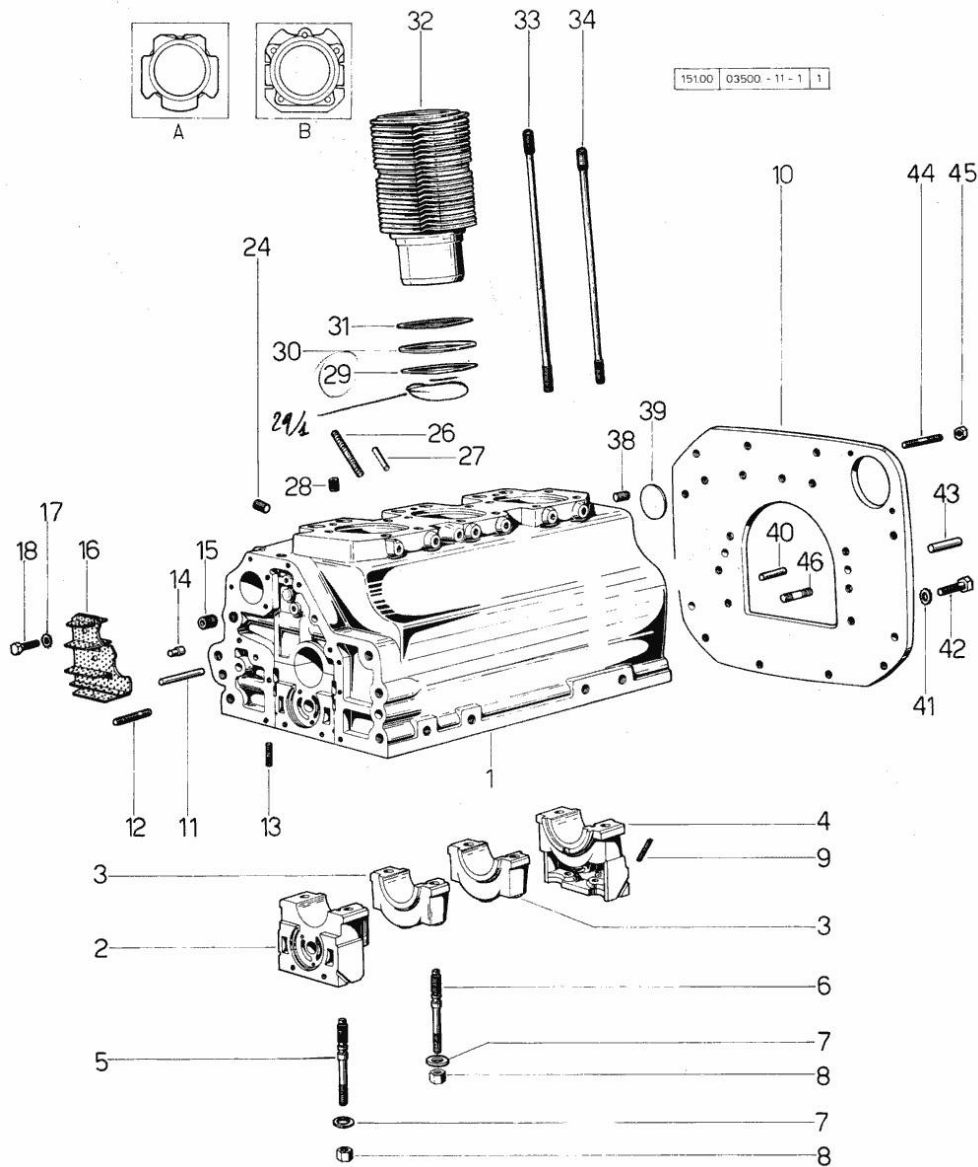
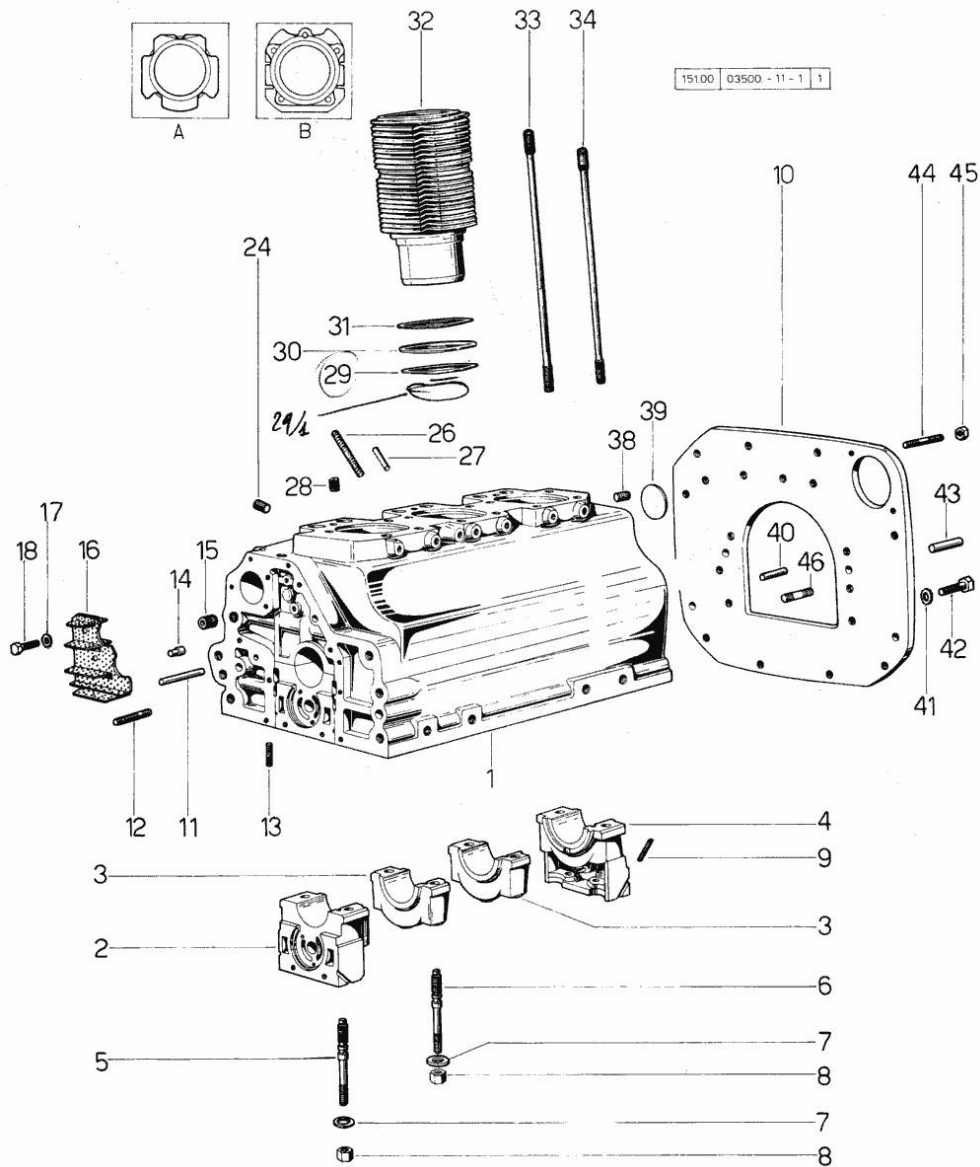


Section: ENGINE  
CRANKCASE



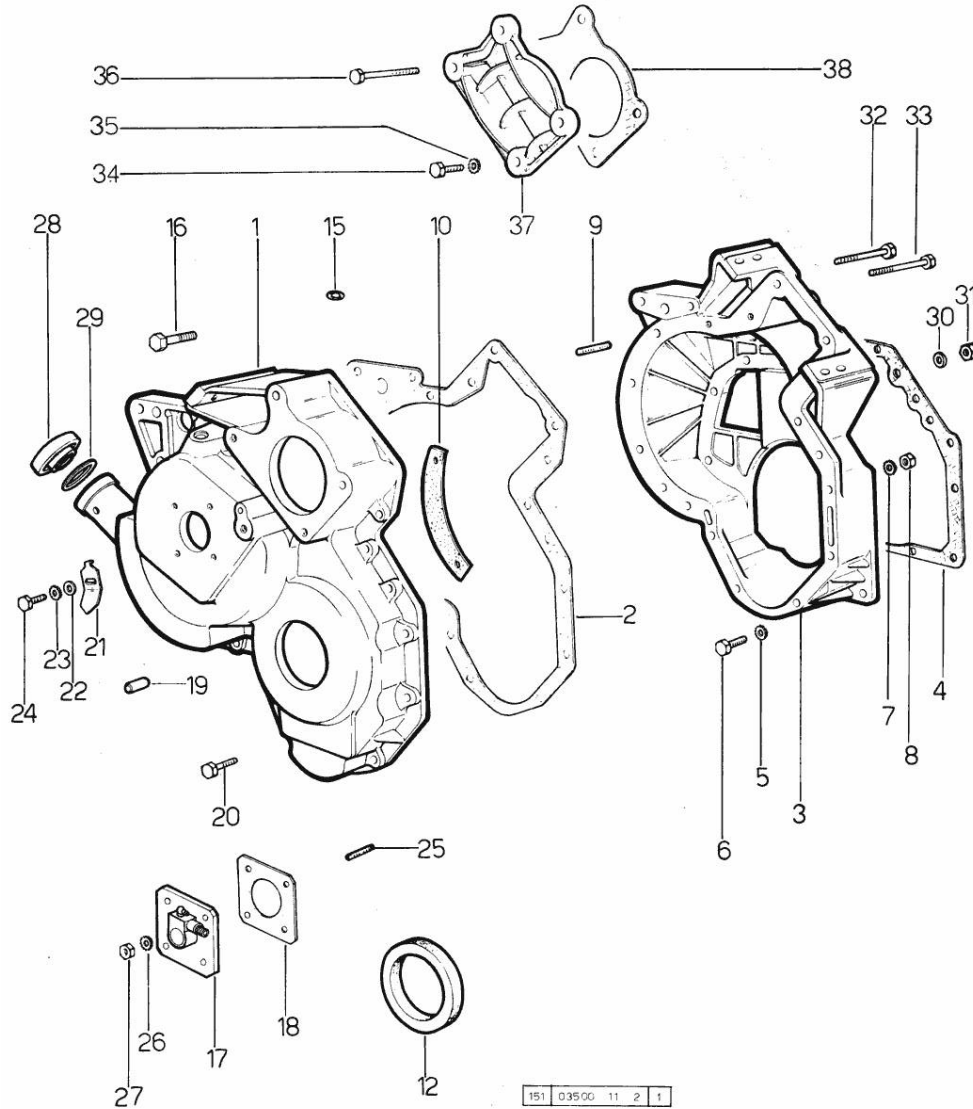
| Fig.                         | P/n             | QTY | Name                                                                           |
|------------------------------|-----------------|-----|--------------------------------------------------------------------------------|
| <b>Notes:</b><br>[AURORA 45] |                 |     |                                                                                |
| 0                            | 0.035.0050.6    | 1   | old part number                                                                |
| 0                            | 0.035.0050.6/10 | 1   | FOR ENGINE INSTALLATION - 2682 <-<br>gasket set                                |
| 1                            | 0.035.1110.4/30 | 1   | FOR ENGINE INSTALLATION-> 2683<br>crankcase                                    |
| 2                            | 0.004.8776.0    | 1   | 2682 <- ORDER ALSO: 1x FLANGE 0.027.1130.0/10 1x<br>support                    |
| 3                            | 0.029.1113.0    | 2   | FLANGE 0.027.1154.0/30 1x GASKET 0.029.1153.0/10 1x<br>support                 |
| 4                            | 0.029.1116.0    | 1   | FILTER 0.029.1155.2/10<br>support                                              |
| 5                            | 0.021.1157.0    | 4   | stud bolt                                                                      |
| 6                            | 0.029.1117.0    | 4   | stud bolt                                                                      |
| 7                            | 2.1599.144.7    | 8   | shoulder ring 12.5x23x4                                                        |
| 8                            | 2.1019.026.7    | 8   | special nut m 12 p.1.5                                                         |
| 9                            | 0.029.1154.0    | 4   | gasket                                                                         |
| 10                           | 0.027.1130.0/20 | 1   | flange<br>ORDER ALSO: 2x 2.0432.257.1 - 2x 2.1470.007.2 AND 2x<br>2.1011.322.2 |
| 11                           | 2.1699.116.0    | 1   | pin                                                                            |
| 12                           | 2.0432.018.1    | 5   | stud bolt m 8 p.1.25 / p.1 x 65                                                |
| 13                           | 2.0432.003.1    | 24  | stud bolt m 8 p.1.25 / p.1 x 20                                                |
| 14                           | 2.1699.021.0    | 1   | pin 7.8x8x20                                                                   |
| 15                           | 2.3130.002.1    | 1   | plug 1/4" gas                                                                  |
| 16                           | 0.029.1155.2    | 1   | filter                                                                         |
| 16                           | 0.029.1155.2/20 | 1   | 2682 <-<br>plate<br>> 2683                                                     |
| 17                           | 2.1470.002.2    | 2   | lock washer 6                                                                  |
| 18                           | 2.0112.002.2    | 2   | screw m 6 p.1 x 10                                                             |
| 24                           | 2.3139.001.1    | 3   | plug                                                                           |
| 26                           | 2.0432.267.1    | 2   | stud bolt m 12 p.1.75-1.25x60                                                  |
| 27                           | 2.1653.708.0    | 1   | pin 8x18                                                                       |
| 28                           | 2.3130.001.1    | 3   | plug 1/8" gas                                                                  |
| 29                           | 0.004.7419.0    | 6   | oil seal                                                                       |
| 29                           | 2.1569.068.0    | 3   | gasket 26.3x34                                                                 |
| 30                           | 2.1589.037.0    | 3   | shim                                                                           |
| 31                           | 2.1589.036.0    | 3   | shim                                                                           |
| 32                           | 0.034.1120.0/10 | 3   | engine cylinder                                                                |
| 32                           | 0.036.1120.0    | 3   | FIG.A - 3580 <- ->4110 - 4200 <- -> 4530 - 4709 <-<br>cylinder                 |

Section: ENGINE  
CRANKCASE



| Fig. | P/n          | QTY | Name                                            |
|------|--------------|-----|-------------------------------------------------|
|      |              |     | FIG.B -> 3581 - 4109 <- ->4201- 4529 <- -> 4710 |
| 33   | 0.029.1123.0 | 12  | stud bolt m 12 p.1.5x265<br>4359 <-             |
| 33   | 0.039.1122.0 | 12  | stud bolt m 12 p.1.5x310<br>-> 4360             |
| 34   | 0.034.1122.0 | 3   | stud bolt<br>4359 <-                            |
| 34   | 0.037.1122.0 | 3   | stud bolt<br>-> 4360                            |
| 38   | 2.3130.002.1 | 2   | plug 1/4" gas                                   |
| 39   | 2.3170.022.1 | 1   | expansion plug 60                               |
| 40   | 2.1653.708.0 | 2   | pin 8x18                                        |
| 41   | 2.1470.008.2 | 11  | lock washer 14                                  |
| 42   | 2.0112.511.1 | 11  | screw m 14 p.2 x 30                             |
| 43   | 2.1652.911.0 | 2   | cylindrical plug 12x25                          |
| 44   | 2.0432.257.1 | 2   | stud bolt m 12 p.1.75 - 1.25 x 30               |
| 44   | 2.0439.033.1 | 2   | stud bolt m 10x28                               |
| 45   | 2.1011.106.2 | 2   | nut m 10 p.1.5                                  |
| 46   | 2.0432.155.1 | 2   | stud bolt m 10 p.1.5 / p. 1.25 x 25             |

Section: ENGINE  
TIMING CASE



| Fig.                         | P/n             | QTY | Name                        |
|------------------------------|-----------------|-----|-----------------------------|
| <b>Notes:</b><br>[AURORA 45] |                 |     |                             |
| 1                            | 0.027.1155.0/30 | 1   | governor housing            |
| 2                            | 0.027.1156.0    | 1   | gasket                      |
| 3                            | 0.027.1154.0/30 | 1   | flange                      |
| 4                            | 0.029.1153.0    | 1   | gasket                      |
| 4                            | 0.029.1153.0/10 | 1   | gasket<br>2682 <-<br>> 2683 |
| 5                            | 2.1474.007.1    | 8   | spring washer 6             |
| 6                            | 2.0112.207.2    | 8   | screw m 8 p 1.25 x 20       |
| 7                            | 2.1474.007.1    | 15  | spring washer 6             |
| 8                            | 2.1011.405.2    | 15  | nut m 8 p.1                 |
| 9                            | 2.0439.060.2    | 3   | stud bolt m 8 p.1.25-1x22   |
| 10                           | 0.027.1152.0/20 | 1   | small plate                 |
| 12                           | 2.1519.010.0    | 1   | special oil seal 58x80x10   |
| 15                           | 2.1530.028.0    | 1   | oil seal 11.91 x 2.62       |
| 16                           | 2.0122.222.2    | 1   | screw                       |
| 17                           | 2.7049.210.0/20 | 1   | transmission                |
| 18                           | 0.026.1150.0    | 1   | gasket                      |
| 19                           | 2.1653.711.0    | 1   | pin                         |
| 20                           | 2.0122.213.2    | 4   | screw m 8 p.1x35            |
| 21                           | 0.027.1150.0/10 | 1   | index                       |
| 22                           | 2.1310.004.2    | 1   | flat washer 8.4x17          |
| 23                           | 2.1599.140.2    | 1   | shoulder ring 8.5x16x3      |
| 24                           | 2.0112.103.1    | 1   | screw m 7 p.1.x12           |
| 24                           | 2.0112.204.2    | 1   | screw m 8 p.1.25x14         |
| 25                           | 2.0439.055.1    | 4   | stud bolt m 6 p.1 x 18      |
| 26                           | 2.1474.007.1    | 4   | spring washer 6             |
| 27                           | 2.1011.103.2    | 4   | nut m 6 p.1                 |
| 28                           | 0.022.1135.3    | 1   | plug                        |
| 29                           | 2.1569.048.0    | 1   | gasket                      |
| 30                           | 2.1474.007.1    | 2   | spring washer 6             |
| 31                           | 2.1011.405.2    | 2   | nut m 8 p.1                 |
| 32                           | 2.0122.224.1    | 1   | screw                       |
| 33                           | 2.0122.225.2    | 1   | screw m 8 p.1x80            |
| 34                           | 2.0112.213.2    | 2   | screw m 8 p.1.25 x 35       |
| 35                           | 2.1474.007.1    | 4   | spring washer 6             |
| 36                           | 2.0122.229.1    | 2   | screw m 8 x 100             |
| 37                           | 0.029.1163.0    | 1   | small cover                 |
| 38                           | 0.054.1155.0    | 1   | gasket                      |

151 03500 11 2 1

**<https://www.ebooklibonline.com>**

Hello dear friend!

Thank you very much for reading.

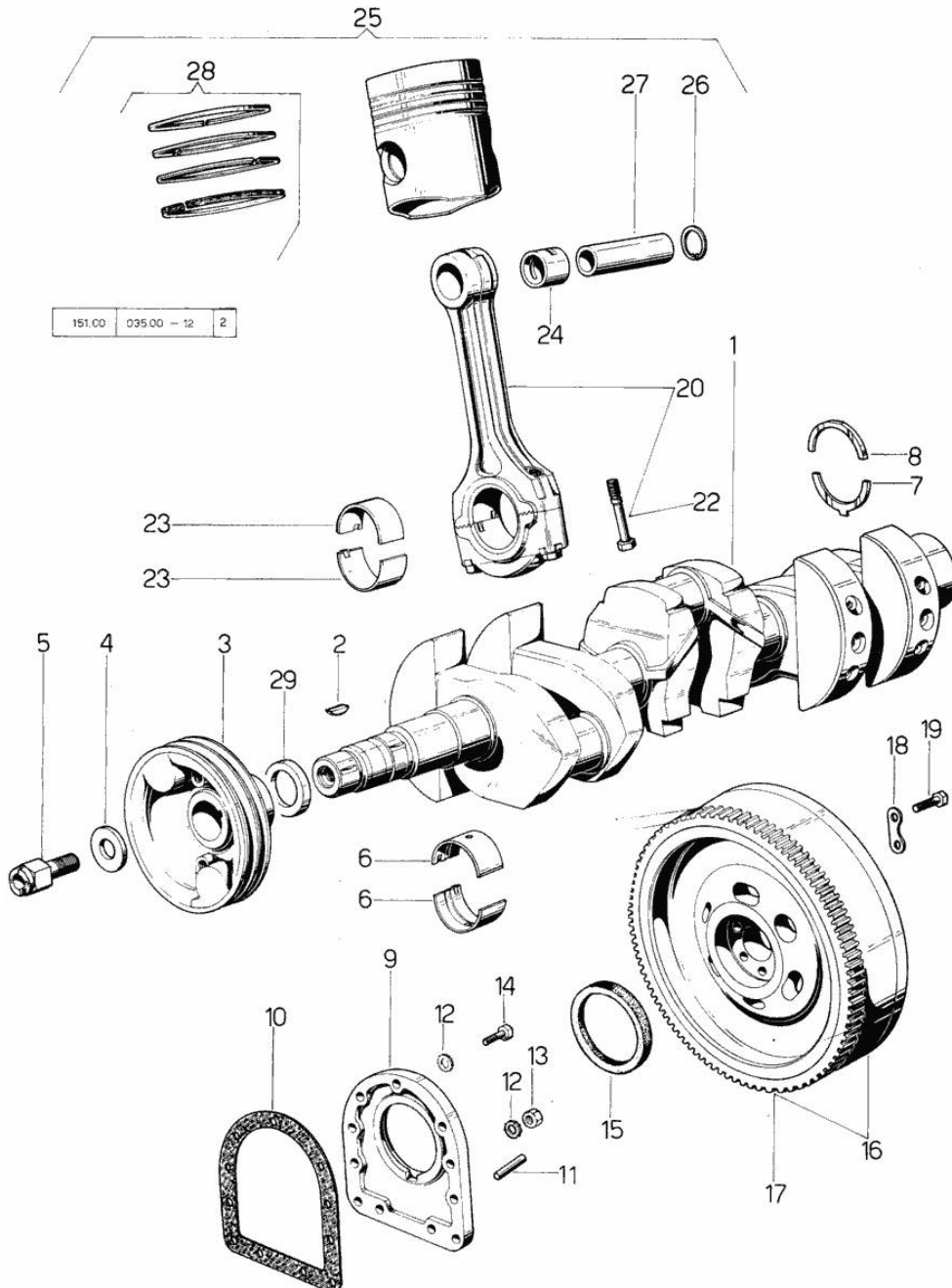
Enter the link into your browser.

The full manual is available for immediate download.

**<https://www.ebooklibonline.com>**

Section: ENGINE

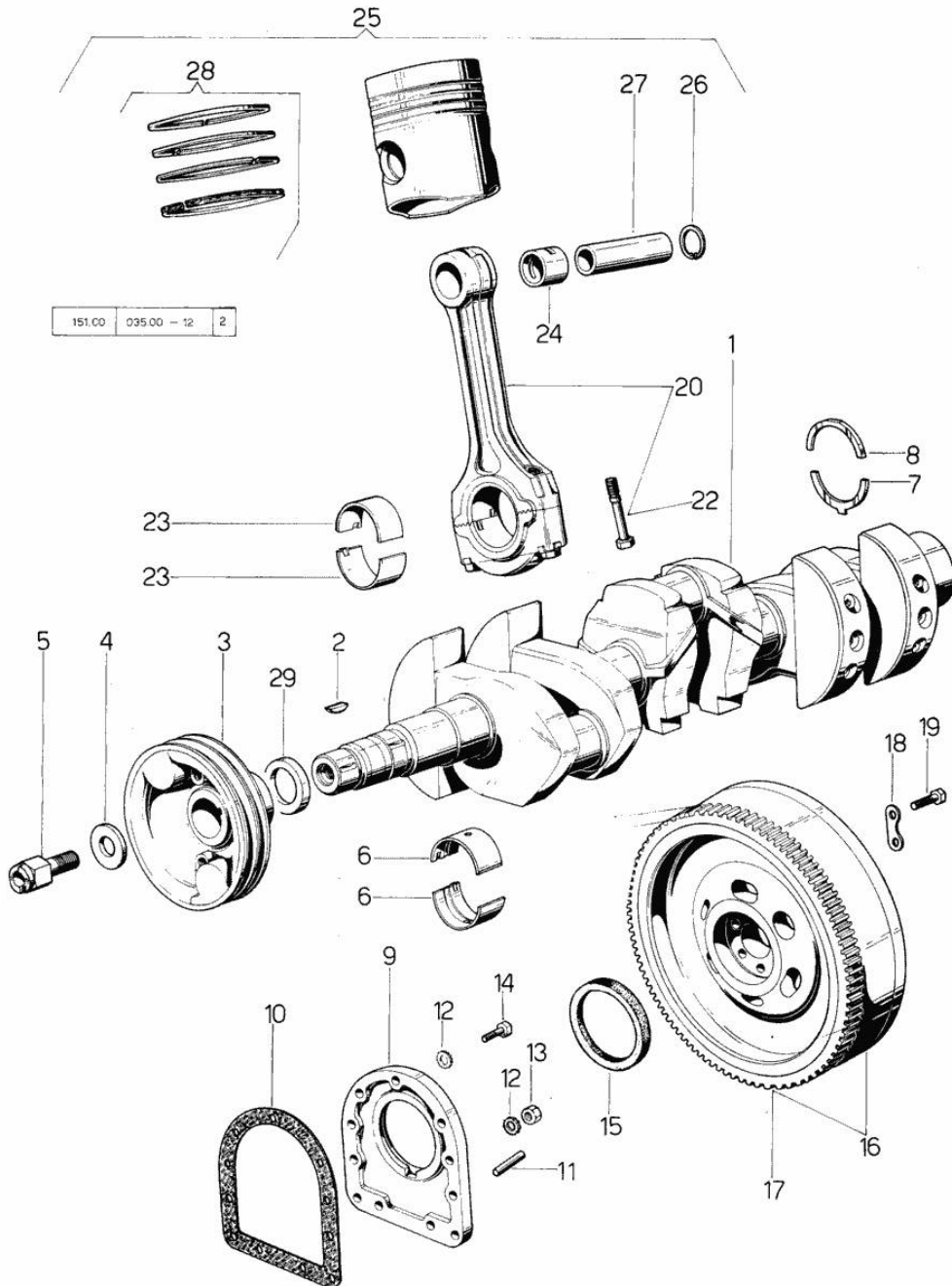
**CRANKSHAFT**



| Fig.                         | P/n             | QTY | Name                                         |
|------------------------------|-----------------|-----|----------------------------------------------|
| <b>Notes:</b><br>[AURORA 45] |                 |     |                                              |
| 1                            | 0.029.1210.4/30 | 1   | crankshaft<br>-> 4863                        |
| 1                            | 0.029.1210.6    | 1   | crankshaft<br>4862 <-                        |
| 2                            | 2.1799.002.0    | 1   | stick 10x13                                  |
| 3                            | 0.035.1244.0/10 | 1   | old part number                              |
| 3                            | 0.035.1258.0    | 1   | old part number<br>VINEYARD AND ORCHARD TYPE |
| 4                            | 0.001.6020.0    | 1   | shoulder                                     |
| 5                            | 2.0129.032.2    | 1   | screw m 24 p.2x45                            |
| 6                            | 0.029.0066.0    | 8   | main half bushing - mm 1.00                  |
| 6                            | 0.029.1215.0/10 | 8   | main half bushing                            |
| 6                            | 0.029.1215.7    | 8   | main half bushing - mm 0.25                  |
| 6                            | 0.029.1215.8    | 8   | main half bushing - mm 0.50                  |
| 6                            | 0.029.1215.9    | 8   | main half bushing - mm 0.75                  |
| 7                            | 0.001.4547.0    | 2   | shoulder ring + mm 0.05                      |
| 7                            | 0.001.4548.0    | 2   | shoulder ring + mm 0.10                      |
| 7                            | 0.001.4549.0    | 2   | shoulder ring + mm 0.15                      |
| 7                            | 0.042.1219.0    | 2   | shoulder ring STANDARD                       |
| 8                            | 0.001.4544.0    | 2   | shoulder ring + mm 0.05                      |
| 8                            | 0.001.4545.0    | 2   | shoulder ring + mm 0.10                      |
| 8                            | 0.001.4546.0    | 2   | shoulder ring + mm 0.15                      |
| 8                            | 0.042.1218.0    | 2   | shoulder ring STANDARD                       |
| 9                            | 0.029.1240.0    | 1   | flange                                       |
| 10                           | 0.029.1250.0    | 1   | gasket                                       |
| 11                           | 2.1652.915.0    | 2   | cylindrical plug 12x35                       |
| 12                           | 2.1474.010.1    | 6   | spring washer 10                             |
| 13                           | 2.1011.421.2    | 2   | nut m 10 p.1.25                              |
| 14                           | 2.0112.309.2    | 7   | screw m 10 p.1.5 x 25                        |
| 15                           | 2.1519.009.0    | 1   | special oil seal                             |
| 16                           | 0.035.1241.6    | 1   | flywheel                                     |
| 17                           | 0.029.1242.0    | 1   | crown wheel Z = 120, mm 20                   |
| 17                           | 0.038.1242.0    | 1   | crown wheel Z = 120, mm 15                   |
| 18                           | 2.1379.006.0    | 3   | lock-tab 15x15x36,5                          |
| 19                           | 2.0122.515.7    | 6   | screw                                        |
| 20                           | 0.029.1220.3    | 3   | engine connecting rod<br>4862 <-             |
| 20                           | 0.039.1220.3/20 | 3   | engine connecting rod<br>-> 4863             |
| 22                           | 0.002.3910.0    | 6   | screw<br>4862 <-                             |

Section: ENGINE

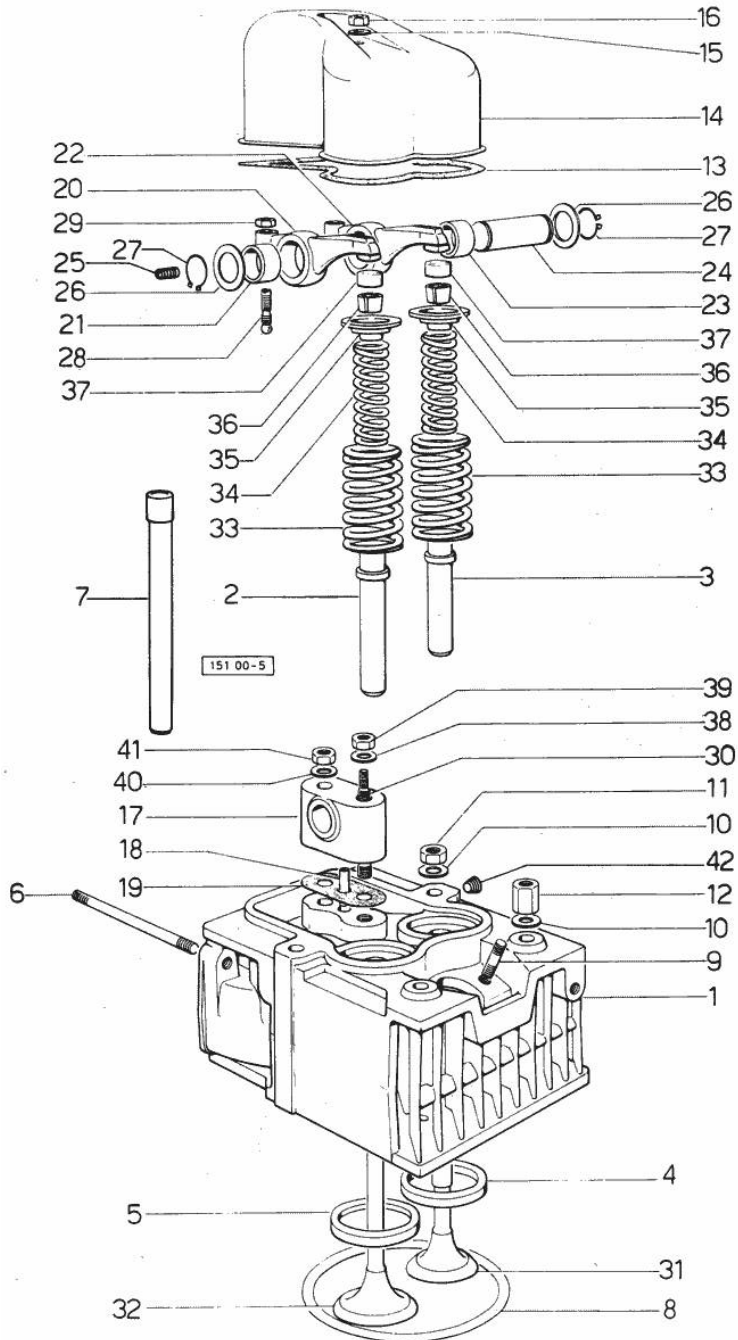
**CRANKSHAFT**



| Fig. | P/n          | QTY | Name                                     |
|------|--------------|-----|------------------------------------------|
| 22   | 0.039.1250.0 | 6   | screw m 14 p.1.5x63<br>-> 4863           |
| 23   | 0.021.0068.0 | 6   | con.rod half bushing                     |
| 23   | 0.021.1225.0 | 6   | con.rod half bushing STANDARD<br>4862 <- |
| 23   | 0.021.1225.7 | 6   | con.rod half bushing - mm 0.25           |
| 23   | 0.021.1225.8 | 6   | con.rod half bushing - mm 0.50           |
| 23   | 0.021.1225.9 | 6   | con.rod half bushing - mm 0.75           |
| 23   | 0.039.0068.0 | 6   | con.rod half bushing - mm 1.016          |
| 23   | 0.039.1225.0 | 6   | con.rod half bushing<br>-> 4863          |
| 23   | 0.039.1225.7 | 6   | con.rod half bushing -mm 0.254           |
| 23   | 0.039.1225.8 | 6   | con.rod half bushing -mm 0.508           |
| 23   | 0.039.1225.9 | 6   | con.rod half bushing -mm 0.762           |
| 24   | 0.002.4168.0 | 3   | bearing<br>6402 <- -> 6467               |
| 24   | 0.004.4471.0 | 3   | special bushing<br>-> 6403 - 6466 <-     |
| 25   | 0.036.0060.6 | 3   | complete piston                          |
| 25   | 0.036.0061.6 | 3   | complete piston + mm 0.5                 |
| 25   | 0.036.0062.6 | 3   | complete piston + mm 1.00                |
| 26   | 2.1411.014.1 | 6   | circlip 35                               |
| 27   | 0.002.4167.0 | 3   | piston pin                               |
| 28   | 0.034.0052.6 | 3   | piston ring set                          |
| 28   | 0.034.0053.6 | 3   | piston ring set + mm 0.5                 |
| 28   | 0.034.0054.6 | 3   | piston ring set + mm 1.0                 |
| 29   | 0.034.1256.0 | 1   | spacer<br>-> 5513                        |

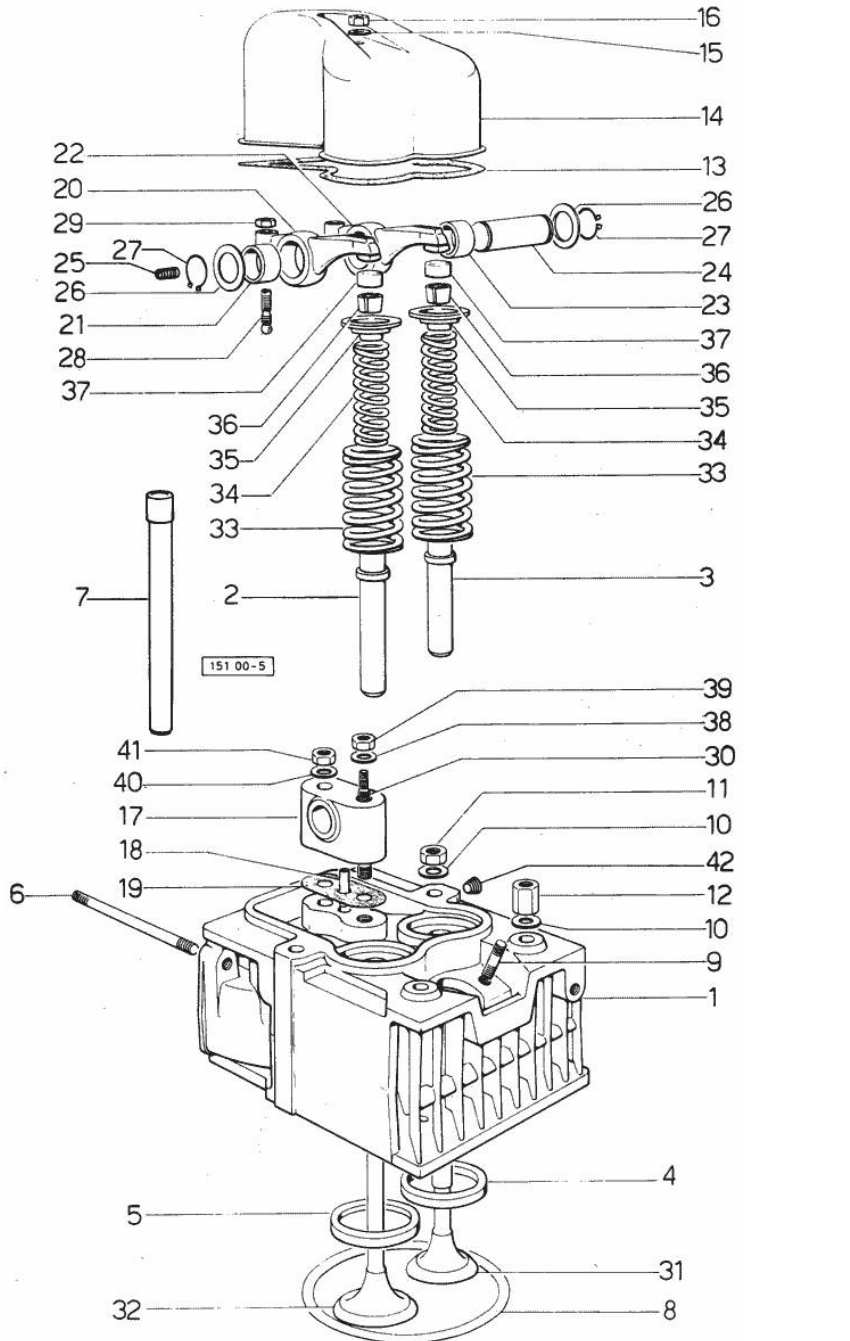


Section: ENGINE  
CYLINDER HEAD



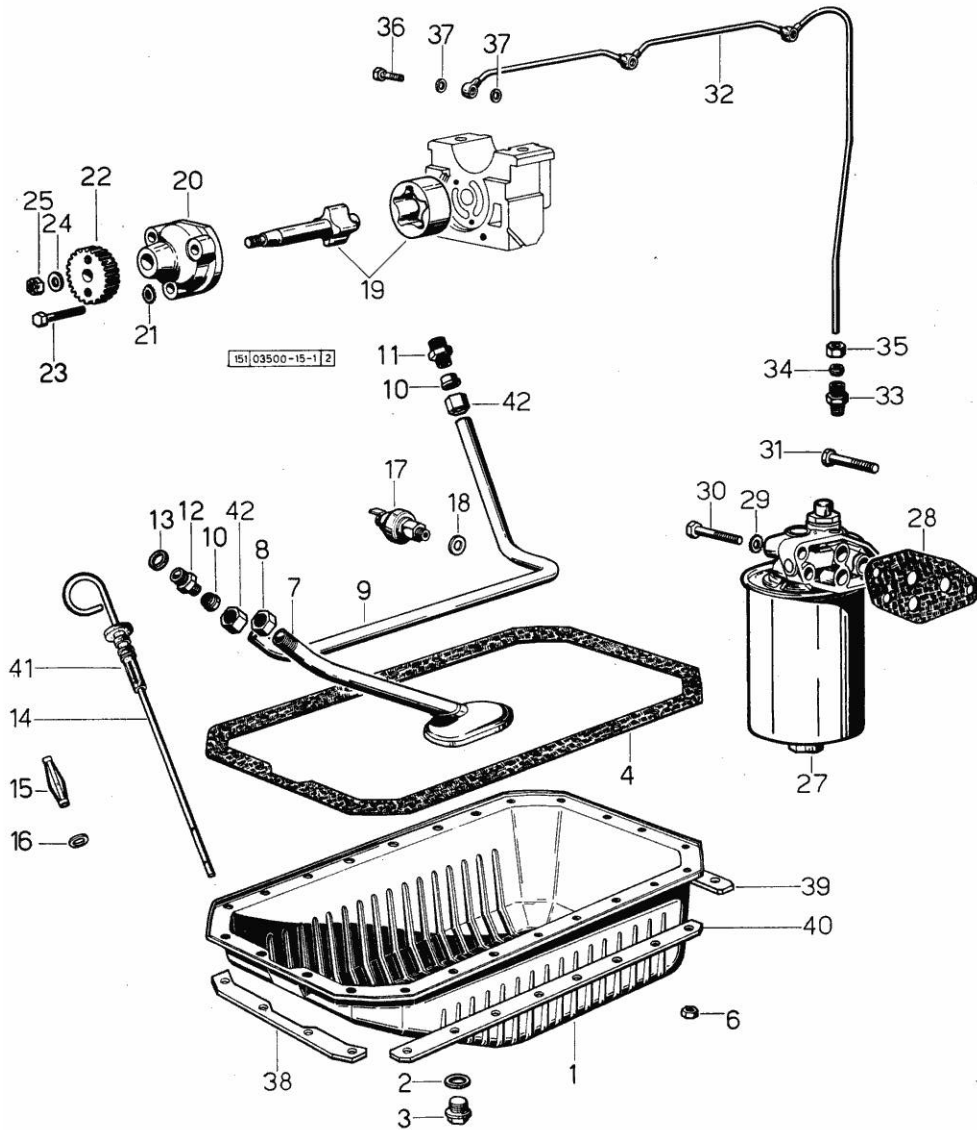
| Fig.                         | P/n             | QTY | Name                                                                       |
|------------------------------|-----------------|-----|----------------------------------------------------------------------------|
| <b>Notes:</b><br>[AURORA 45] |                 |     |                                                                            |
| 0                            | 0.034.0057.6    | 1   | gasket set<br>- FOR 1 CYLINDER VALVE GRINDING AND PISTON RINGS REPLACEMENT |
| 0                            | 0.034.0058.6    | 1   | gasket set<br>- FOR GRINDING VALVES OF ONE CYLINDER                        |
| 1                            | 0.034.1410.6    | 3   | engine head<br>4359 <-                                                     |
| 1                            | 0.036.1410.6/20 | 3   | engine head<br>-> 4360 - 10312 <-                                          |
| 1                            | 0.037.1450.3/20 | 3   | engine head<br>-> 10313                                                    |
| 2                            | 0.037.1416.0    | 3   | valve guide<br>-> 4360                                                     |
| 2                            | 0.037.1417.0/10 | 3   | valve guide<br>4359 <-                                                     |
| 3                            | 0.029.1417.0    | 3   | valve guide<br>4359 <-                                                     |
| 3                            | 0.037.1417.0/10 | 3   | valve guide<br>-> 4360                                                     |
| 4                            | 0.037.1452.0/10 | 2   | valve seat                                                                 |
| 5                            | 0.037.1451.0/10 | 2   | valve seat                                                                 |
| 6                            | 2.0432.003.1    | 3   | stud bolt m 8 p.1.25 / p.1 x 20                                            |
| 6                            | 2.0432.007.1    | 3   | stud bolt m 8 p.1.25 / p.1 x 30                                            |
| 6                            | 2.0432.022.1    | 1   | stud bolt m 8 p.1.25-1x85                                                  |
| 6                            | 2.0432.026.1    | 2   | stud bolt m 8 p.1.25 - 1.00 x 110                                          |
| 7                            | 0.029.1418.0    | 6   | sleeve                                                                     |
| 8                            | 2.1569.056.0/10 | 3   | gasket                                                                     |
| 9                            | 2.0439.087.1    | 6   | stud bolt                                                                  |
| 10                           | 2.1599.144.7    | 12  | shoulder ring 12.5x23x4                                                    |
| 11                           | 2.1019.025.7    | 10  | special nut                                                                |
| 12                           | 2.1019.037.7    | 2   | special nut                                                                |
| 13                           | 0.029.1450.0    | 3   | gasket                                                                     |
| 14                           | 0.029.1440.2    | 3   | cap<br>4359 <-                                                             |
| 14                           | 0.039.1440.0    | 3   | cap<br>-> 4360                                                             |
| 15                           | 2.1560.004.0    | 3   | copper gasket 8.2 x 14                                                     |
| 16                           | 2.1099.056.1    | 3   | special nut m8 p.1                                                         |
| 17                           | 0.034.1430.0    | 3   | support                                                                    |
| 18                           | 0.029.1452.0    | 3   | tube                                                                       |
| 19                           | 0.034.1450.0    | 3   | tappet gasket                                                              |

Section: ENGINE  
CYLINDER HEAD



| Fig. | P/n             | QTY | Name                                     |
|------|-----------------|-----|------------------------------------------|
| 20   | 002.5937.3/30   | 3   | rocker arm                               |
| 21   | 2.1559.021.0/40 | 3   | bushing 15x19x22                         |
| 22   | 0.002.5936.3/40 | 3   | rocker arm                               |
| 23   | 2.1559.021.0/40 | 3   | bushing 15x19x22                         |
| 24   | 0.029.1431.0    | 3   | pin                                      |
| 25   | 2.0512.102.1    | 3   | screw m 6 p.1 x 8                        |
| 26   | 2.1599.019.0    | 6   | shoulder ring 19.5x31x2                  |
| 27   | 2.1410.055.1    | 6   | circlip 19                               |
| 28   | 0.021.1434.0    | 6   | screw                                    |
| 29   | 2.1011.405.2    | 6   | nut m 8 p.1                              |
| 30   | 0.029.1453.0/10 | 3   | stud bolt<br>4359 <-                     |
| 30   | 0.039.1451.0    | 3   | stud bolt<br>-> 4360                     |
| 31   | 0.029.1421.0/10 | 3   | exhaust valve Ø mm 9<br>4359 <-          |
| 31   | 0.039.1421.0    | 3   | exhaust valve Ø mm 9<br>-> 4360          |
| 32   | 0.029.1420.0/10 | 3   | inlet valve Ø mm 9<br>4359 <-            |
| 32   | 0.037.1420.0    | 3   | inlet valve Ø mm 9<br>-> 4360 - 10312 <- |
| 32   | 0.052.1420.0    | 3   | inlet valve Ø mm 9<br>-> 10313           |
| 33   | 2.4019.193.0    | 6   | spring 36.15x55.2x3.2                    |
| 34   | 2.4019.194.0    | 6   | spring 22.70x50.7x2.1                    |
| 35   | 0.002.9215.0    | 6   | cup                                      |
| 36   | 0.002.9193.0    | 6   | conical valve cotter                     |
| 37   | 0.021.1453.0/20 | 6   | small cover                              |
| 38   | 2.1310.006.2    | 3   | flat washer 10.5x21                      |
| 39   | 2.1011.421.2    | 3   | nut m 10 p.1.25                          |
| 40   | 2.1599.160.0    | 3   | washer 10.5x19x4                         |
| 41   | 2.1099.035.1    | 3   | special nut                              |

Section: ENGINE  
LUBRICATION



Notes:  
[AURORA 45]

| Fig. | P/n             | QTY | Name                         |
|------|-----------------|-----|------------------------------|
| 1    | 0.035.1510.2    | 1   | oil sump                     |
| 2    | 2.1560.054.0    | 1   | gasket 21 x 26               |
| 3    | 2.3199.001.2    | 1   | plug 1/2" gas                |
| 4    | 0.029.1512.2    | 1   | gasket                       |
| 6    | 2.1011.405.2    | 24  | nut m 8 p.1                  |
| 7    | 0.035.1531.3    | 1   | tube                         |
| 8    | 2.1099.026.1    | 1   | special nut                  |
| 9    | 0.029.1534.0    | 1   | tube                         |
| 10   | 2.3359.004.2    | 2   | ring                         |
| 11   | 2.3319.014.1    | 1   | pipe union                   |
| 12   | 2.3319.013.1    | 1   | pipe union                   |
| 13   | 2.1560.013.0    | 1   | gasket 18.2x22               |
| 14   | 0.039.1513.3    | 1   | dipstick                     |
| 15   | 0.000.9318.0    | 1   | spring                       |
| 16   | 0.000.8601.0    | 1   | gasket                       |
| 17   | 2.7099.040.0/10 | 1   | pressure switch              |
| 18   | 2.1560.008.0    | 1   | gasket 12.2 x 18             |
| 19   | 0.029.1522.3/10 | 1   | shaft                        |
| 20   | 0.029.1520.0    | 1   | pump casing                  |
| 21   | 2.1470.004.2    | 3   | lock washer 8                |
| 22   | 0.029.1521.0/10 | 1   | gear                         |
| 23   | 2.0112.215.2    | 3   | screw m 8 p.1.25 x 40        |
| 24   | 2.1310.006.2    | 1   | flat washer 10.5x21          |
| 25   | 2.1121.107.2    | 1   | self-locking nut m 10 p 1.25 |
| 27   | 2.4419.130.0/10 | 1   | oil filter<br>☞ 01.00.6      |
| 28   | 0.037.1552.0/10 | 1   | gasket                       |
| 29   | 2.1474.010.1    | 3   | spring washer 10             |
| 30   | 2.0112.320.2    | 2   | screw m 10 p.1.5 x 55        |
| 31   | 2.0112.315.2    | 1   | screw m 10 p.1.5 x 40        |
| 32   | 0.029.1536.3/10 | 1   | tube<br>4359 <-<br>>- 4360   |
| 33   | 2.3319.002.1    | 1   | pipe fitting                 |
| 34   | 2.3350.002.1    | 1   | nosepiece 6, d128            |
| 35   | 2.3360.002.1    | 1   | union nut m 10               |
| 36   | 2.3339.001.0    | 3   | pipe fitting m 10 p.1        |
| 37   | 2.1560.006.0    | 6   | gasket 10.2 x 16             |
| 38   | 0.053.1550.0/10 | 1   | small plate                  |
| 39   | 0.053.1551.0    | 1   | small plate                  |



**Suggest:**

**For more complete manuals. Please go to the home page.**

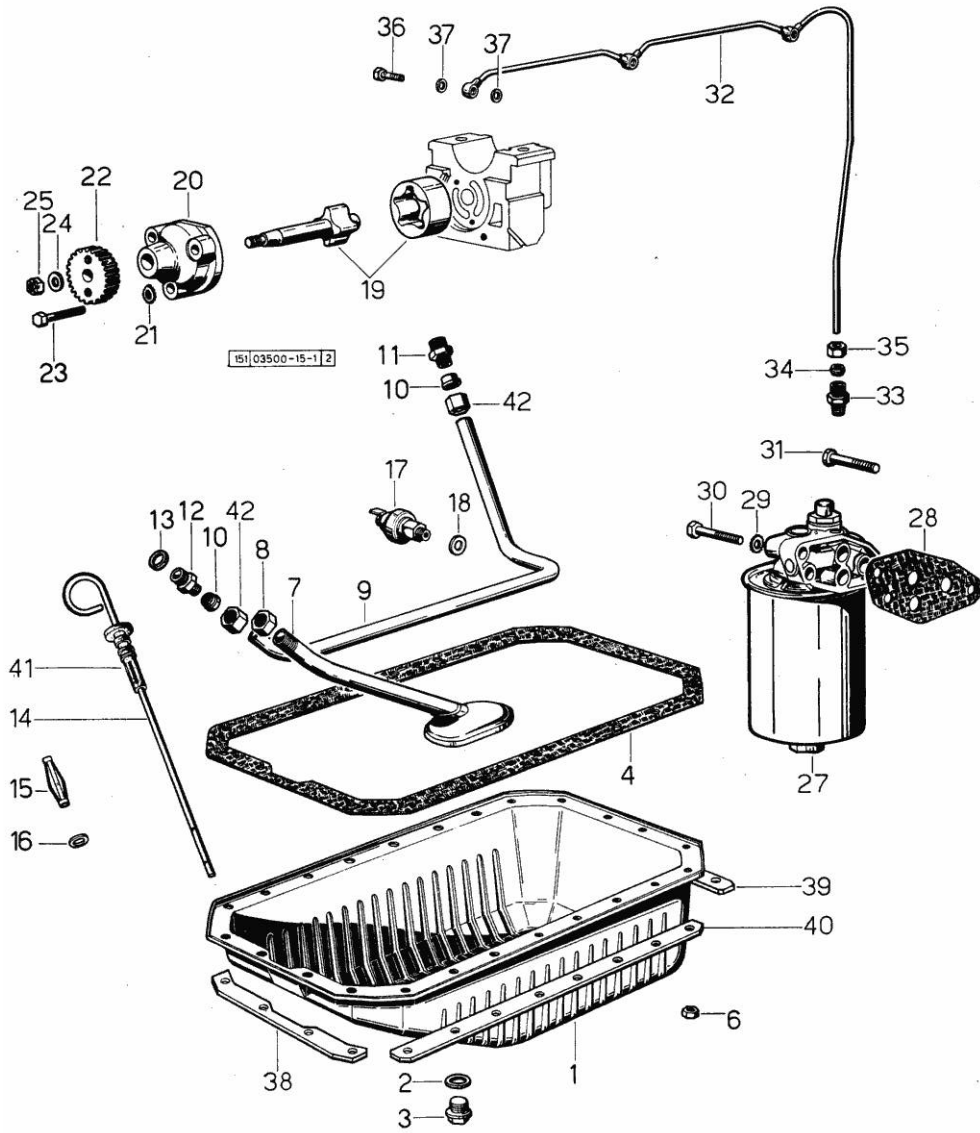
**<https://www.ebooklibonline.com>**

**If the above button click is invalid. Please download this document first, and then click the above link to download the complete manual.**

**Thank you so much for reading**

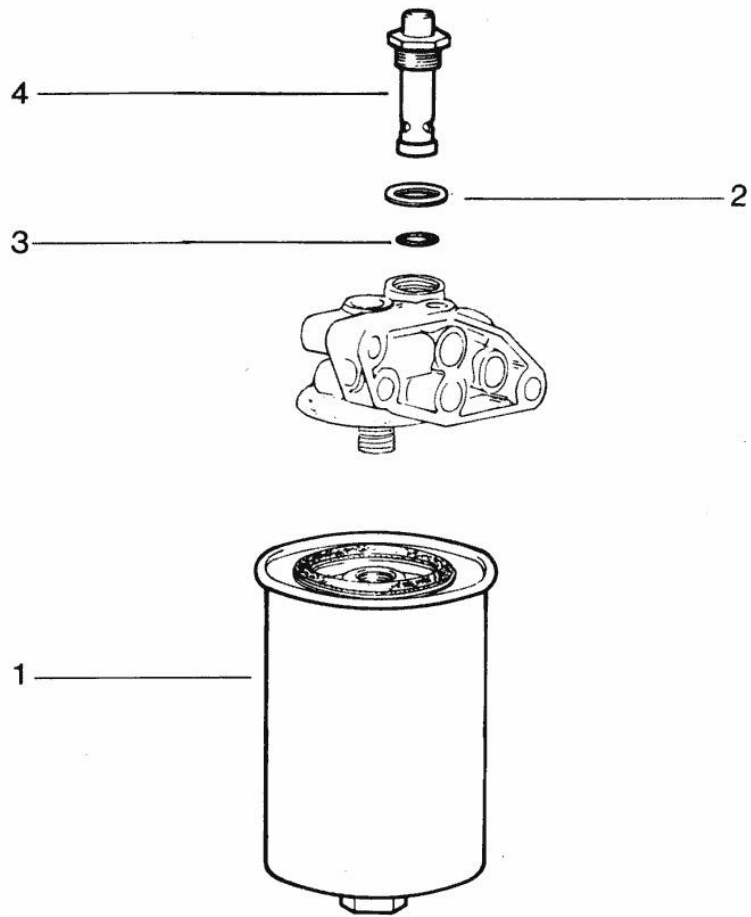
Section: ENGINE  
LUBRICATION

| Fig. | P/n          | QTY | Name        |
|------|--------------|-----|-------------|
| 40   | 0.035.1551.0 | 2   | small plate |
| 41   | 0.034.1551.0 | 1   | gasket      |
| 42   | 2.3369.009.1 | 2   | union nut   |



Section: ENGINE

**DETAILS OF OIL FILTER**



| Fig. | P/n | QTY | Name |
|------|-----|-----|------|
|------|-----|-----|------|

Notes:  
[AURORA 45]

|   |              |   |                     |
|---|--------------|---|---------------------|
| 1 | 2.4419.150.1 | 1 | oil filter element  |
| 2 | 2.4419.130.3 | 1 | gasket              |
| 3 | 2.1530.045.0 | 1 | oil seal 17.86x2.62 |
| 4 | 2.4419.130.2 | 1 | valve               |

**<https://www.ebooklibonline.com>**

Hello dear friend!

Thank you very much for reading.

Enter the link into your browser.

The full manual is available for immediate download.

**<https://www.ebooklibonline.com>**