

Section: ENGINE

CRANKCASE

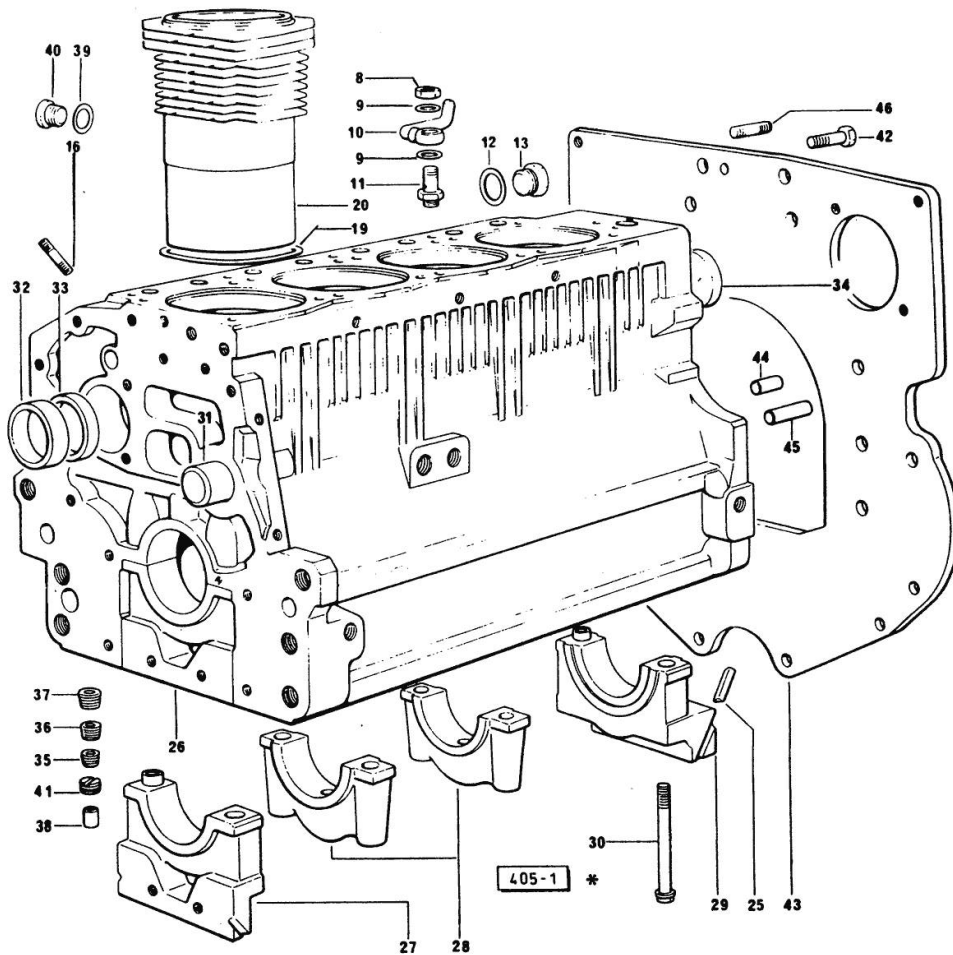
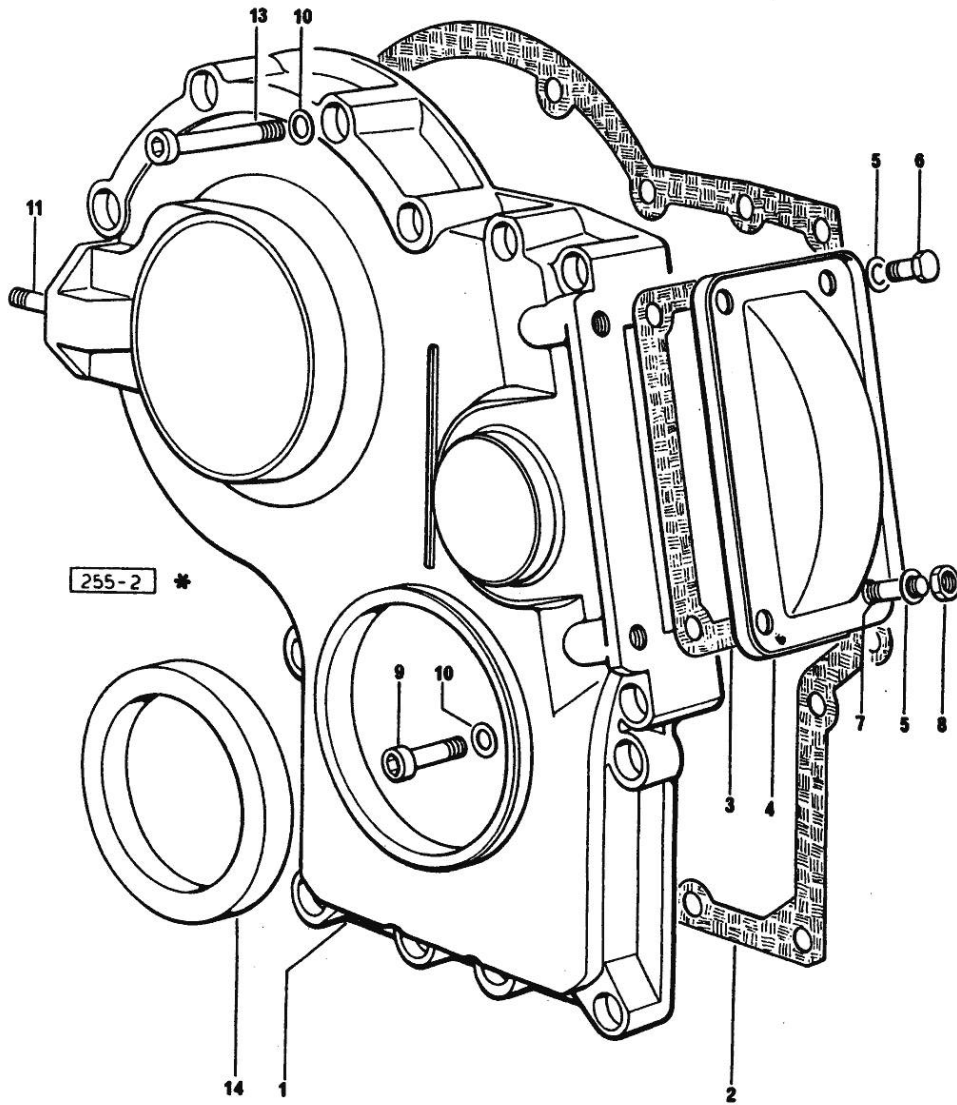


Fig.	P/n	QTY	Name
Notes:			
[ANTARES 100]			
8	2.1099.108.2	4	special nut m 10 p.1
9	2.1560.006.0	8	gasket 10.2 x 16
10	0.086.1550.2	4	sprayer nozzle
11	0.065.1160.3/20	4	valve
12	2.1532.072.0	1	oil seal 26.70x1.78
13	2.3199.405.2	1	plug m 28 p.1.5
16	2.0432.003.7	12	stud bolt m 8 p.1.25 / p.1 x 20
19	2.1519.096.0/20	4	special oil seal 107.67x1.78
20	0.085.1120.0/10	4	engine cylinder
25	0.066.1152.0/10	4	gasket
26	9.08699.41.1	1	crankcase
27	0.065.1112.7/10	1	support
27	2.1699.165.0	1	bush 12.3x15x16
28	0.065.1114.0/10	3	support
29	0.065.1116.3	1	support
29	2.1699.165.0	1	bush 12.3x15x16
30	0.065.1117.0	10	screw m 12 x 100
31	0.066.1151.0	1	pin
32	0.065.1141.0	1	special bushing 59X55X30
33	0.065.1140.0	4	special bushing 59X55X20
34	2.3179.012.0	1	plug 60
35	2.3130.001.1	10	plug 1/8" gas
36	2.3130.002.1	2	plug 1/4" gas
37	2.3130.003.1	7	plug 3/8" gas
38	2.3199.092.0	4	plug 8 x 12
39	2.1560.017.0	1	gasket 22.2 x 27
40	2.3120.002.4	1	plug m 22 x 1.5
41	2.1324.011.0	1	plug
42	2.0112.511.2	8	screw m 14 p.2 x 30
43	0.066.1130.0/20	1	flange
44	2.1651.912.0	2	cylindrical plug 12x28
45	2.1651.917.0	1	cylindrical plug 12x40
46	2.0432.255.7	2	stud bolt m 12 p.1.75-1.25x25

Section: ENGINE
TIMING CASE



Notes:
[ANTARES 100]

Fig.	P/n	QTY	Name
1	0.065.1132.0/20	1	guard
2	0.065.1150.0/30	1	gasket
3	0.065.1152.0/10	1	-
4	0.065.1151.0	1	cover
5	2.1470.004.2	4	lock washer 8
6	2.0112.205.2	2	screw m 8 p.1.25 x 16
7	2.0432.003.7	2	stud bolt m 8 p.1.25 / p.1 x 20
8	2.1011.405.2	2	nut m 8 p.1
9	2.0312.208.2	8	screw m 8 p.1.25 x 25
10	2.1480.014.1	15	washer 8
11	2.0432.003.7	2	stud bolt m 8 p.1.25 / p.1 x 20
13	2.0312.214.2	3	screw m 8 p.1.25 x 40
13	2.0312.219.2	4	screw m 8 p.1.25x65
14	2.1529.167.0	1	oil seal

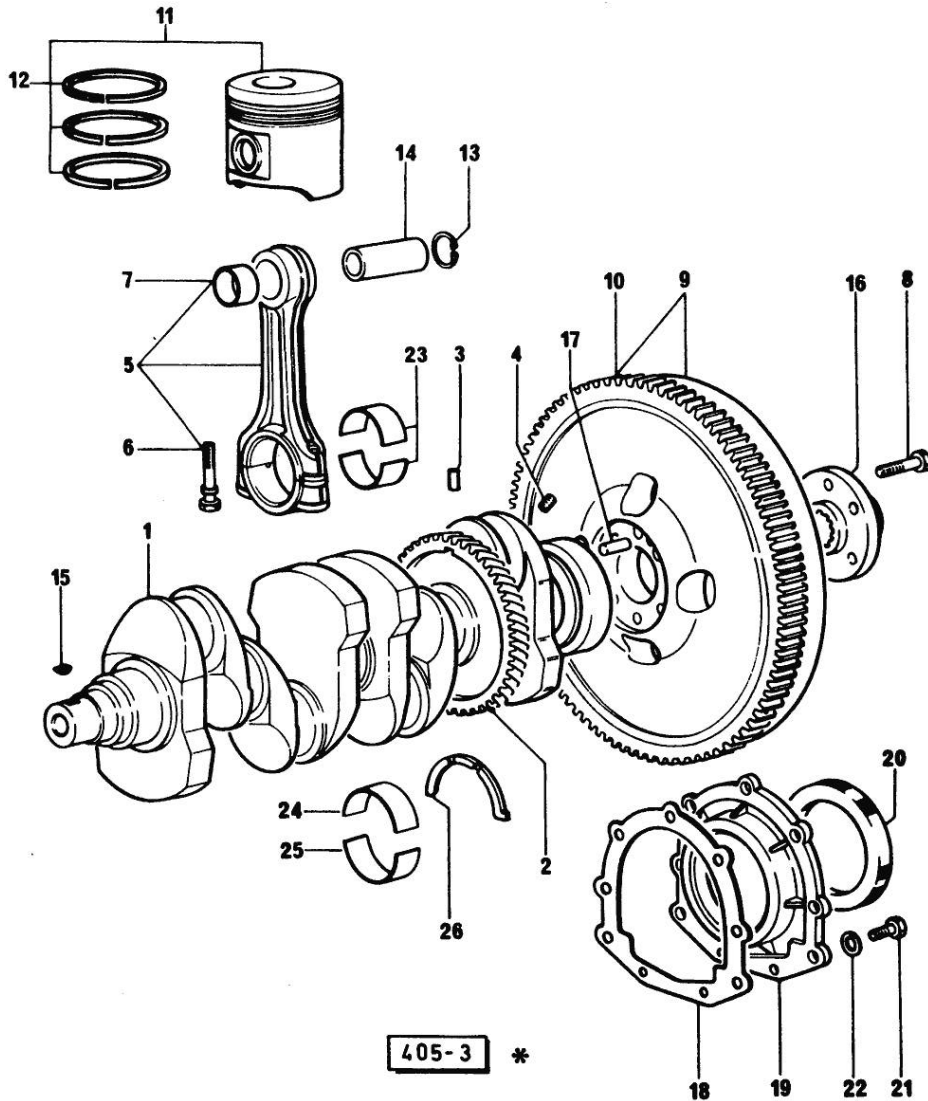
Section: ENGINE

CRANKSHAFT

Fig.	P/n	QTY	Name
------	-----	-----	------

Notes:
[ANTARES 100]

1	0.086.1210.3/10	1	crankshaft
2	0.065.1211.0/10	1	crown wheel
3	2.1630.608.0	1	pin 6x16
4	2.3130.001.1	4	plug 1/8" gas
5	0.078.1220.3/30	4	engine connecting rod
6	2.0399.213.0	8	screw m 12 p.1.25x61.5
7	2.1559.114.0/10	4	special bushing
8	2.0139.022.2	6	screw m 12 p.1.25x55
9	0.076.1247.3/20	1	flywheel
10	0.065.1242.0	1	crown wheel Z = 123
11	0.087.0060.A	4	complete piston STANDARD
12	0.081.0090.6/10	4	piston ring set
13	2.1411.014.1	8	circlip 35
14	0.078.1236.0	4	piston pin Ø 18 / Ø 35 / L = mm 86
15	2.1720.006.0	2	key 4x6.5
16	0.255.2525.0/10	1	flange
17	2.1651.915.0	1	pin 12x35
18	0.065.1254.0/20	1	gasket
19	0.065.1253.0/20	1	cover
20	2.1529.073.0	1	special oil seal 110x130x13
21	2.0112.207.2	9	screw m 8 p 1.25 x 20
22	2.1474.009.2	9	spring washer 8
23	0.065.1225.0	1	con.rod half bushing STANDARD - A = 28.75 -> 29.00
23	0.065.1225.7	1	con.rod half bushing - mm 0.25
23	0.065.1225.8	8	con.rod half bushing - mm 0.50
24	0.065.1215.0/10	5	main half bushing STANDARD
24	0.065.1215.7	1	main half bushing - mm 0.25
24	0.065.1215.8	1	main half bushing - mm 0.50
25	0.065.1216.0/10	5	main half bushing STANDARD
25	0.065.1216.7	1	main half bushing - mm 0.25
25	0.065.1216.8	1	main half bushing - mm 0.50
26	0.065.1218.0	4	shim STANDARD
26	0.065.1218.7	1	shim + mm 0.10
26	0.065.1218.8	1	shim + mm 0.15



<https://www.ebooklibonline.com>

Hello dear friend!

Thank you very much for reading.

Enter the link into your browser.

The full manual is available for immediate download.

<https://www.ebooklibonline.com>

Section: ENGINE

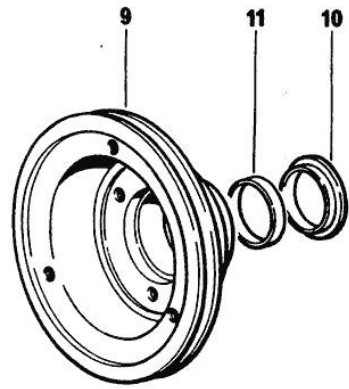
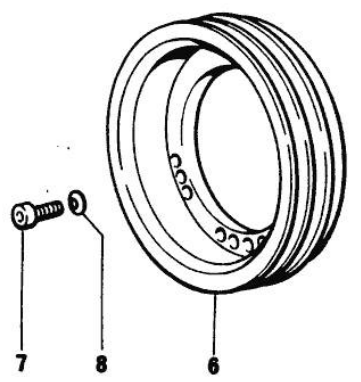
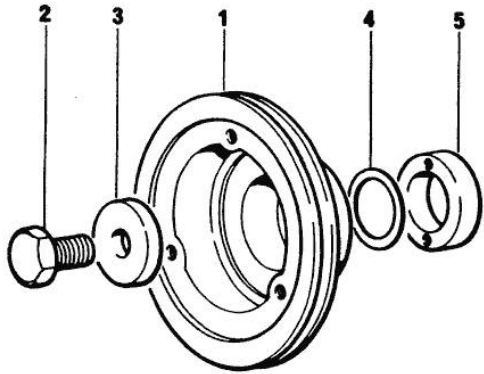
ENGINE SHAFT - PULLEYS

Fig.	P/n	QTY	Name
------	-----	-----	------

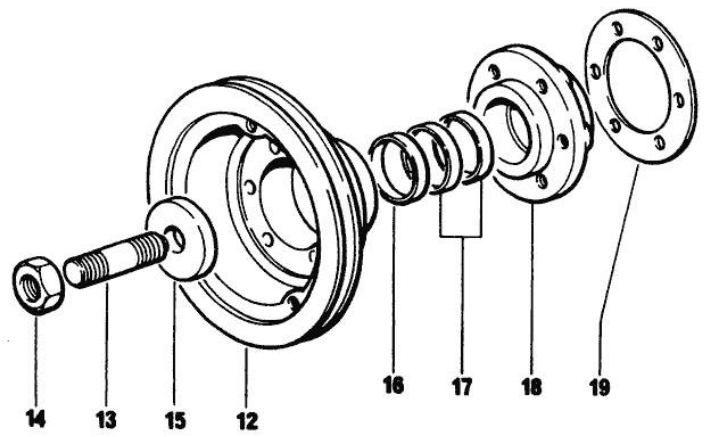
Notes:

[ANTARES 100]

1	0.085.1244.0	1	pulley
2	2.0399.144.7/10	1	screw m 20 p.1.5x51
3	2.1599.524.7	1	washer 21x60x12
4	2.1589.189.0	3	shoulder ring mm 1.00
5	0.085.1248.0/20	1	hub
6	0.086.1251.0/10	1	pulley
7	2.0312.308.2	3	screw m 10 p.1.5 x 25
8	2.1480.015.1	3	washer 10
9	0.085.1253.0/10	1	pulley
10	0.085.1254.0	1	ring
11	0.065.1256.0	1	ring 45x52
12	0.086.1244.0	1	pulley
13	2.0439.195.7	1	stud bolt m 20 p.1.5x80
14	2.1019.094.7	1	nut m 20 p.1.5
15	2.1599.524.4	1	-
16	2.1579.865.0	1	spacer 45.2x51.8x10
17	0.065.1256.0	2	ring 45x52
18	0.011.3515.0/20	1	hub Z = 48
19	2.1589.136.0	3	shoulder ring 71x110x0.5
19	2.1589.137.0	1	shoulder ring 71x110x1



405 - 4 *

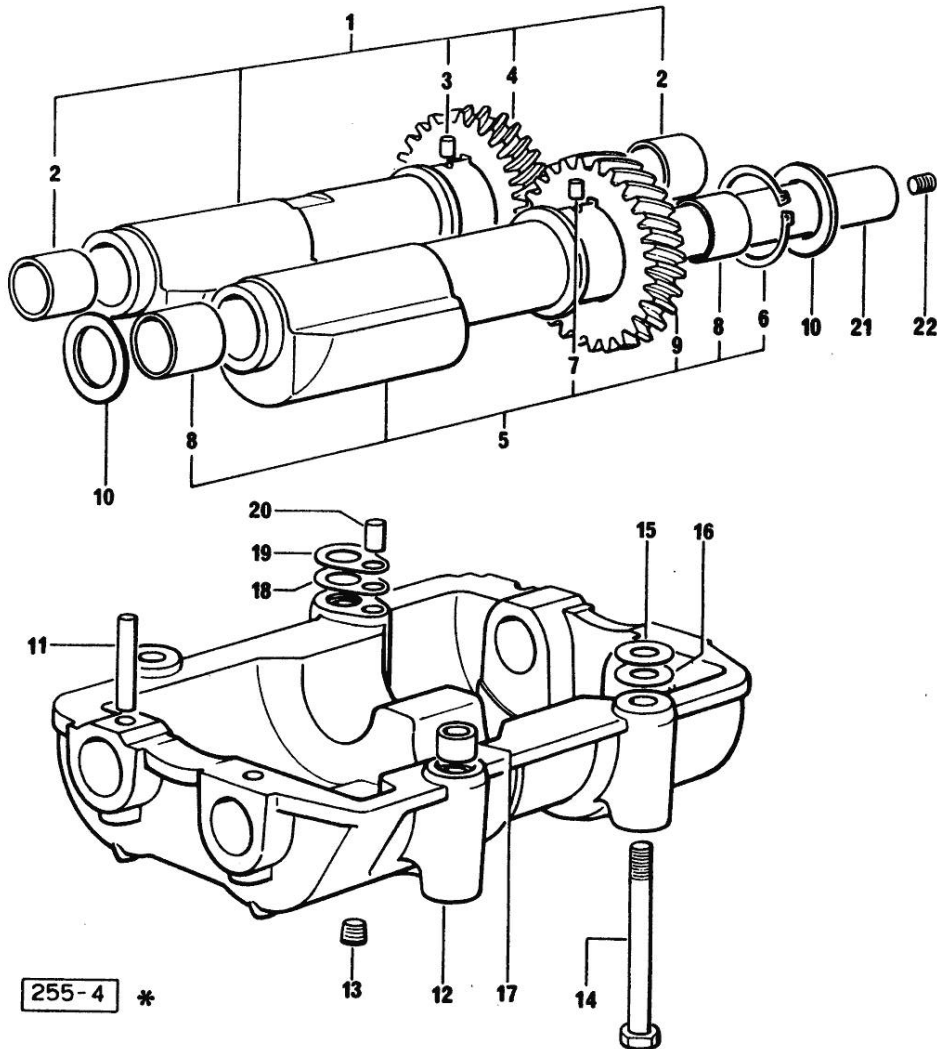


Section: ENGINE
COUNTERWEIGHTS

Fig.	P/n	QTY	Name
------	-----	-----	------

Notes:
 [ANTARES 100]

1	0.086.1233.3/30	1	mass sx/lh/li
2	2.1559.115.0	2	special bushing 26x30x30
3	2.1651.302.0	1	roll pin 4x6
4	0.086.1233.3/30	1	mass sx/lh/li
5	0.065.1233.3/30	1	mass dx/rh/re
6	2.1410.018.7	1	circlip 45
7	2.1651.302.0	1	roll pin 4x6
8	2.1559.115.0	2	special bushing 26x30x30
9	0.065.1233.3/30	1	mass dx/rh/re
10	2.1589.185.0	4	shoulder ring 26.1x34x1
11	2.1631.717.0	2	roll pin 8 x 40
12	0.086.1231.0/10	1	box
13	2.3130.001.1	4	plug 1/8" gas
14	2.0112.427.2	4	screw m 12 p.1.75 x 90
15	2.1579.628.0	2	spacer 16.5x26x0.1
15	2.1589.048.0	2	shoulder ring 16.5x26x0.3
16	2.1579.629.0	1	spacer 12.5x26x0.1
16	2.1589.049.0	1	shoulder ring 12.5x26x0.3
17	2.1579.626.0	2	spacer 13.2x16x11
18	2.1589.139.0	2	shoulder ring mm 0.3
19	2.1589.140.0	2	shoulder ring mm 0.1
20	2.1699.191.0	1	bush 7x10x16
21	0.065.1234.3	2	old part number
22	2.3130.001.1	2	plug 1/8" gas



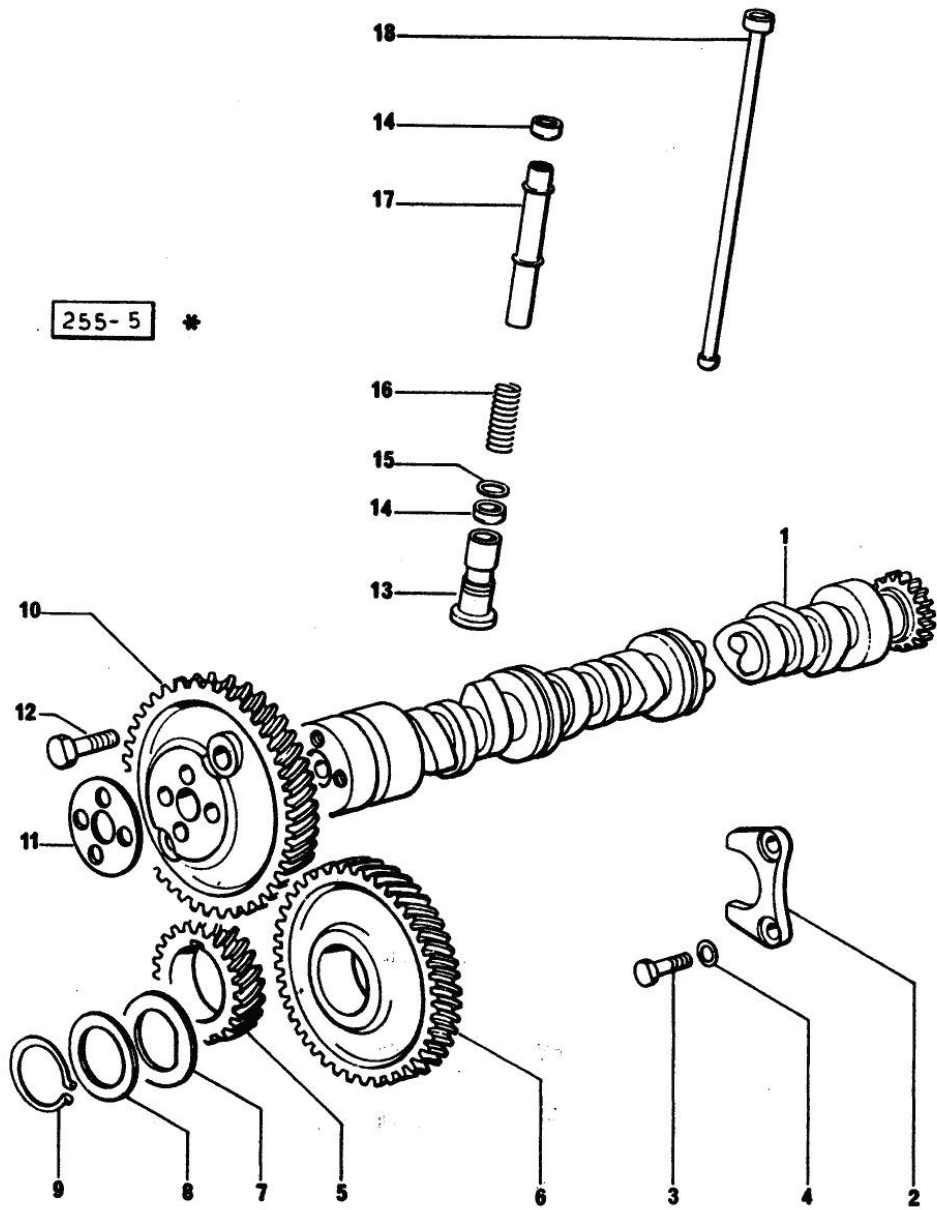
Section: ENGINE

CAMSHAFT

Fig.	P/n	QTY	Name
------	-----	-----	------

Notes:
[ANTARES 100]

1	0.065.1324.0/10	1	gear Z = 32
1	0.066.1310.3/40	1	camshaft
2	0.065.1353.0	1	small plate
3	2.0312.206.2	2	screw m 8 p 1.25 x 20
4	2.1480.014.1	2	washer 8
5	065.1323.0/20	1	-
6	065.1325.3/20	1	-
6	2.1559.185.0/10	1	bushing
7	065.1351.0	2	-
8	0.065.1352.0	1	shim
9	2.1410.016.0	1	-
10	0.013.5017.0	1	gear z=58
11	0.065.1350.0	1	small disc
12	2.0132.207.2	4	screw m 10 p.1 x 25
13	0.065.1330.0	8	tappets
14	2.1569.114.0/10	16	gasket 14x18.5x8
15	2.1599.437.0	8	shoulder ring
16	2.4019.300.1/10	8	spring 18.5x52x2
17	0.065.1332.0	8	sleeve
18	0.065.1331.2	8	rod

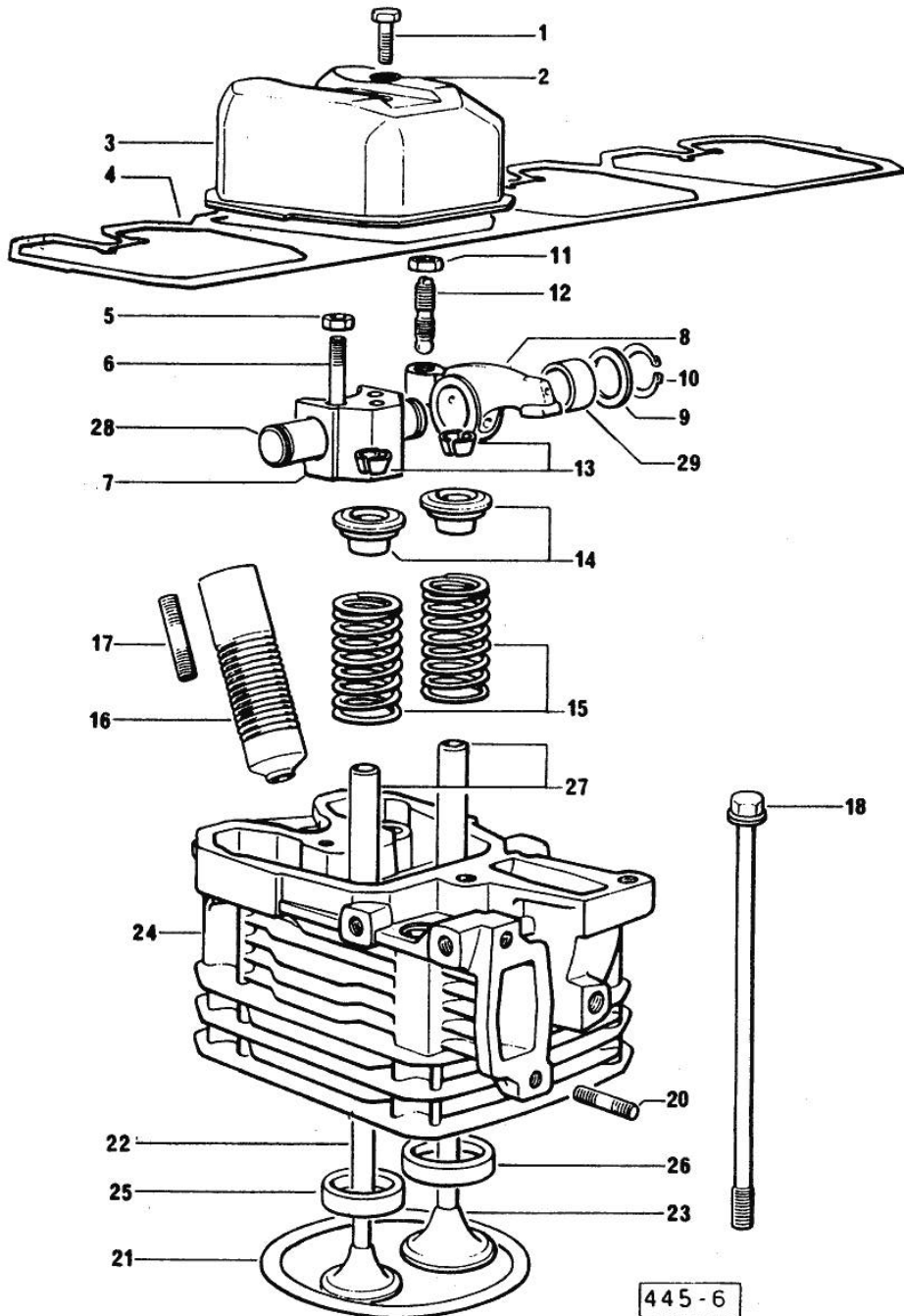


Section: ENGINE
CYLINDER HEAD

Fig.	P/n	QTY	Name
------	-----	-----	------

Notes:
[ANTARES 100]

0	0.085.0057.6/10	1	gasket set
1	2.0112.211.2	4	screw m 8 p.1.25 x 30
2	2.1569.170.0/10	4	gasket 8.2 x 14
3	0.066.1440.0/10	4	small cap
4	0.065.1450.0/30	1	tappet gasket
5	2.1011.421.2	8	nut m 10 p.1.25
6	2.0432.163.7	8	stud bolt m 10 p.1.5 / p.1.25 x 45
7	0.066.1430.0/10	4	support
8	0.066.1432.3	8	rocker arm
9	2.1599.432.0	8	shoulder ring
10	2.1410.055.7	8	circlip 19
11	2.1011.405.2	8	nut m 8 p.1
12	0.021.1434.0	8	screw
13	0.074.1423.0	8	conical valve cotter
14	0.066.1425.0	8	cup
15	2.4019.287.0	8	spring
16	0.065.1413.0/10	4	bush L = mm 97.1
17	2.0432.161.7	4	stud bolt m 10 p.1.5 / p.1.25 x 40
18	0.065.1443.0/20	16	screw
20	2.0432.007.2	8	stud bolt m 8 p.1.25 / p.1 x 30
21	0.085.1450.0/10	4	head gasket mm 0.50
21	0.085.1451.0/10	1	head gasket mm 0.7
21	0.085.1452.0/10	1	head gasket mm 1.0
21	0.085.1453.0/10	4	head gasket mm 0.8
22	0.066.1421.0	4	exhaust valve
23	0.081.1420.0	4	inlet valve Ø mm 9
24	0.081.1410.3/10	4	engine head
25	0.066.1427.0	4	valve seat
26	0.078.1426.0	4	valve seat
27	0.007.1779.0/20	8	valve guide
28	0.066.1431.0	4	pin
29	2.1559.021.0/40	8	bushing 15x19x22



445 - 6

Section: ENGINE
LUBRICATION

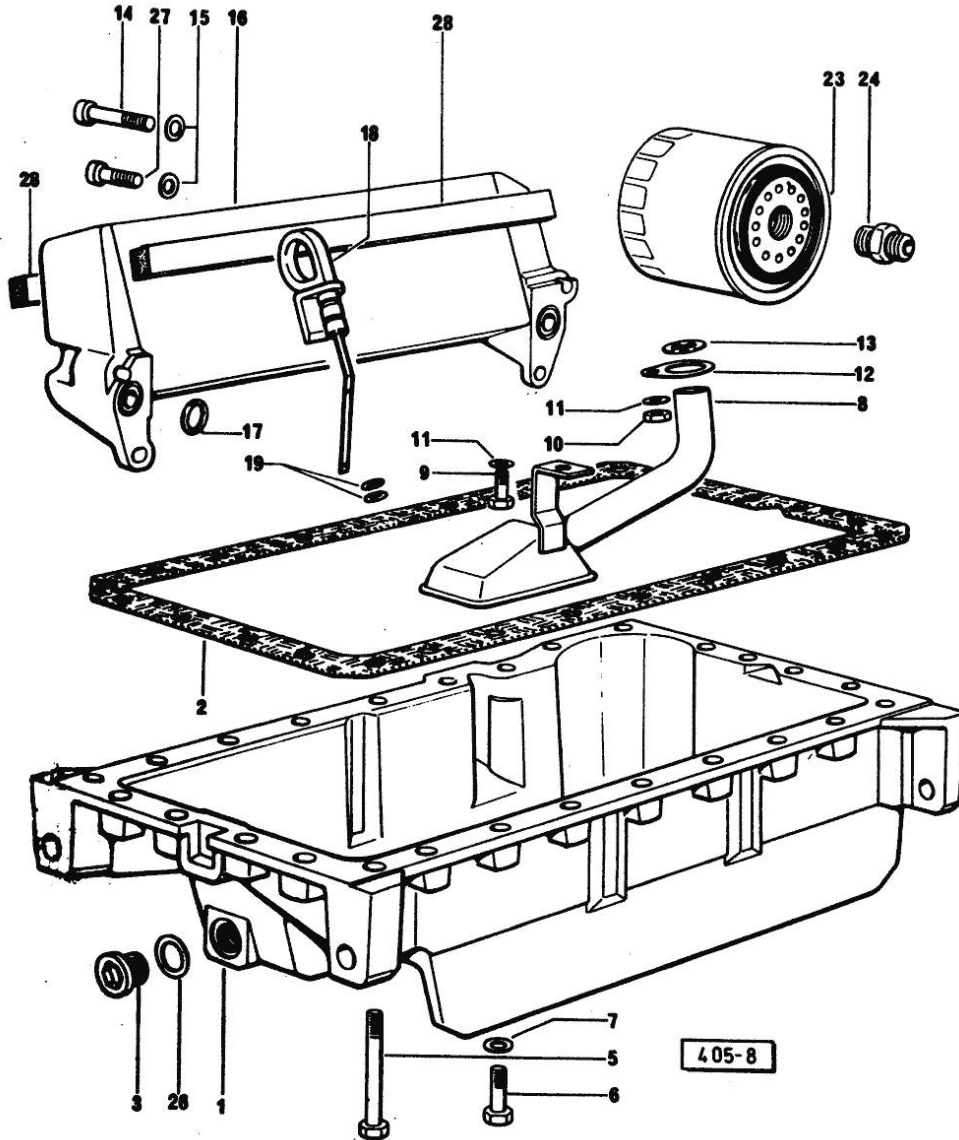


Fig.	P/n	QTY	Name
------	-----	-----	------

Notes:
[ANTARES 100]

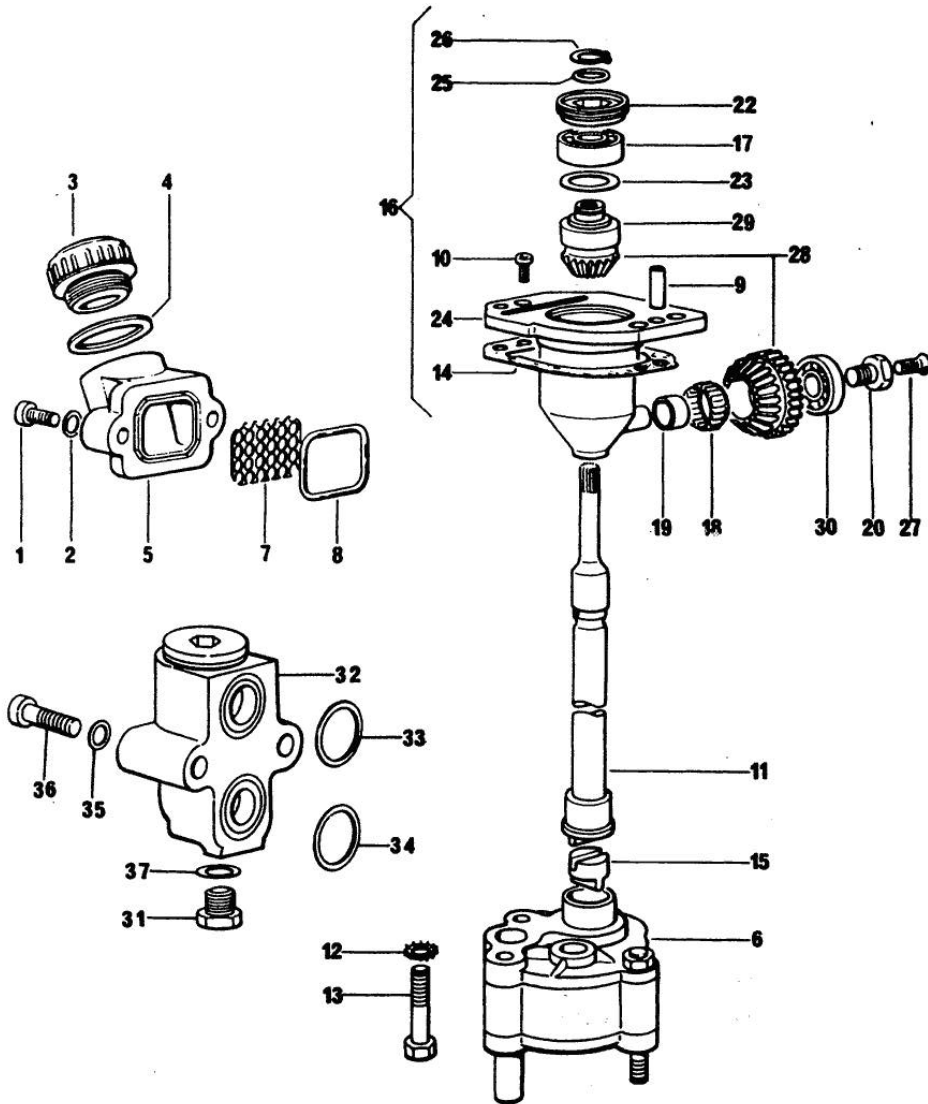
1	0.065.1510.0/20	1	oil sump
2	0.065.1550.0/10	1	gasket
3	2.3199.001.2	1	plug 1/2" gas
5	2.0112.227.2	6	screw m 8 p.1.25 x 90
5	2.0112.235.2	3	screw m 8 p.1.25 x 130
6	2.0112.215.2	17	screw m 8 p.1.25 x 40
7	2.1470.004.2	26	lock washer 8
8	0.065.1531.3/30	1	tube
9	2.0112.205.2	1	screw m 8 p.1.25 x 16
10	2.1011.105.2	1	nut m 8 p.1.25
11	2.1470.004.2	2	lock washer 8
12	0.065.1538.0	1	flange
13	2.1539.040.0	1	special oil seal 21.82 x 3.53
14	2.0312.216.2	2	screw m 8 p.1.25x50
15	2.1310.004.2	4	flat washer 8.4x17
16	0.007.7320.3	1	oil cooler
17	2.1539.048.0	2	special oil seal 20.35x1.78
18	0.086.1513.2/30	1	dipstick
19	2.1539.065.0	2	special oil seal 8.73 x 1.78
23	2.4419.340.0	1	oil filter element
24	2.3339.307.0	1	pipe fitting m 22 p.1.5-3/4"
26	2.1560.054.0	1	gasket 21 x 26
27	2.0399.125.2/10	2	screw m 8 x 55
28	0.052.1856.0	2	gasket

Section: ENGINE
LUBRICATION

Fig.	P/n	QTY	Name
------	-----	-----	------

Notes:
[ANTARES 100]

1	2.0312.206.2	2	screw m 8 p 1.25 x 20
2	2.1480.014.1	2	washer 8
3	0.041.1135.4	1	plug 1" gas
4	2.1569.072.0	1	gasket 32 x 39.5 x 2
5	0.065.1565.0/10	1	pipe union
6	0.010.5441.4/10	1	oil pump
7	0.065.1567.0/10	1	filter
8	2.1539.042.0	1	special oil seal 47.35x1.78
9	2.1651.711.0	2	pin 8 x 14
10	2.0169.005.2	2	screw m 6 p.1 x 12
11	0.065.1569.0/40	1	shaft
12	2.1470.006.2	2	lock washer 10
13	2.0112.324.2	2	screw m 10 p.1.5x75
14	0.065.1560.0/30	2	gasket
15	0.065.1562.0/10	1	joint
16	0.075.1551.4/30	1	support
17	2.2020.001.0	1	ball bearing 15 x 32 x 8.00
18	2.2725.016.0	1	roller cage 15 x 21 x 12
19	2.2680.020.0	1	ring 12 x 15 x 12
20	2.0399.128.2/10	1	screw m 8 p.1 x 8
22	2.1219.025.2/10	1	ring nut m 36 p.1.5
23	2.1569.148.0	1	gasket
23	2.1589.150.0	1	shoulder ring 28.2 x 31.8 x 0.1
23	2.1589.151.0	1	shoulder ring 28.2 x 31.8 x 0.15
24	0.075.1551.3/40	1	support
25	2.1569.147.0	1	gasket
25	2.1589.146.0	1	shoulder ring 15.2 x 19 x 0.15
25	2.1589.153.0	1	shoulder ring 15.2 x 19 x 1.00
26	2.1410.057.1	1	circlip 15
27	2.0342.007.6	1	screw m 4 p.0.7 x 30
28	0.065.1558.6/10	1	bevel drive
29	0.065.1559.0	1	bush
30	2.2030.002.0	1	ball bearing 12 x 28 x 8
31	2.3110.403.2	1	plug m 14
32	0.065.1581.4/20	1	valve
33	2.1539.048.0	1	special oil seal 20.35x1.78
34	2.1539.072.0	1	special oil seal 23.52 x 1.78
35	2.1480.014.1	2	washer 8
36	2.0312.215.2	2	screw
37	2.1560.010.0	1	gasket 14.2 x 20



494 - 7 *

Section: ENGINE
LUBRICATION

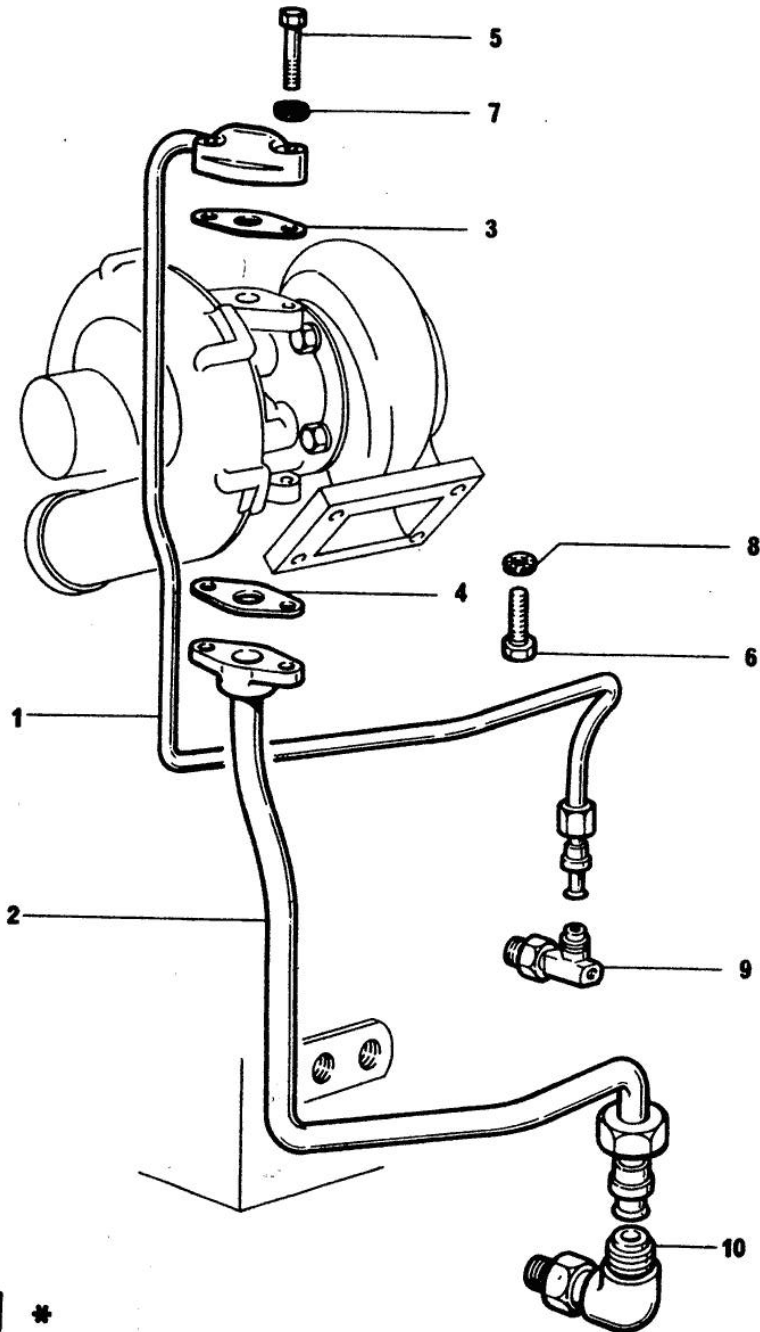


Fig.	P/n	QTY	Name
------	-----	-----	------

Notes:
[ANTARES 100]

1	0.081.1550.3/10	1	tube
2	0.081.1551.3	1	tube
3	0.052.1557.0	1	gasket
4	0.052.1558.0/10	1	gasket
5	2.0112.213.2	2	screw m 8 p.1.25 x 35
6	2.0112.207.2	2	screw m 8 p 1.25 x 20
7	2.1470.004.2	2	lock washer 8
8	2.1470.004.2	2	lock washer 8
9	2.3339.378.2/10	1	pipe fitting
10	2.3264.021.2	1	pipe fitting m 22 p.1.5 - 1" 1/16

Section: ENGINE
LUBRICATION

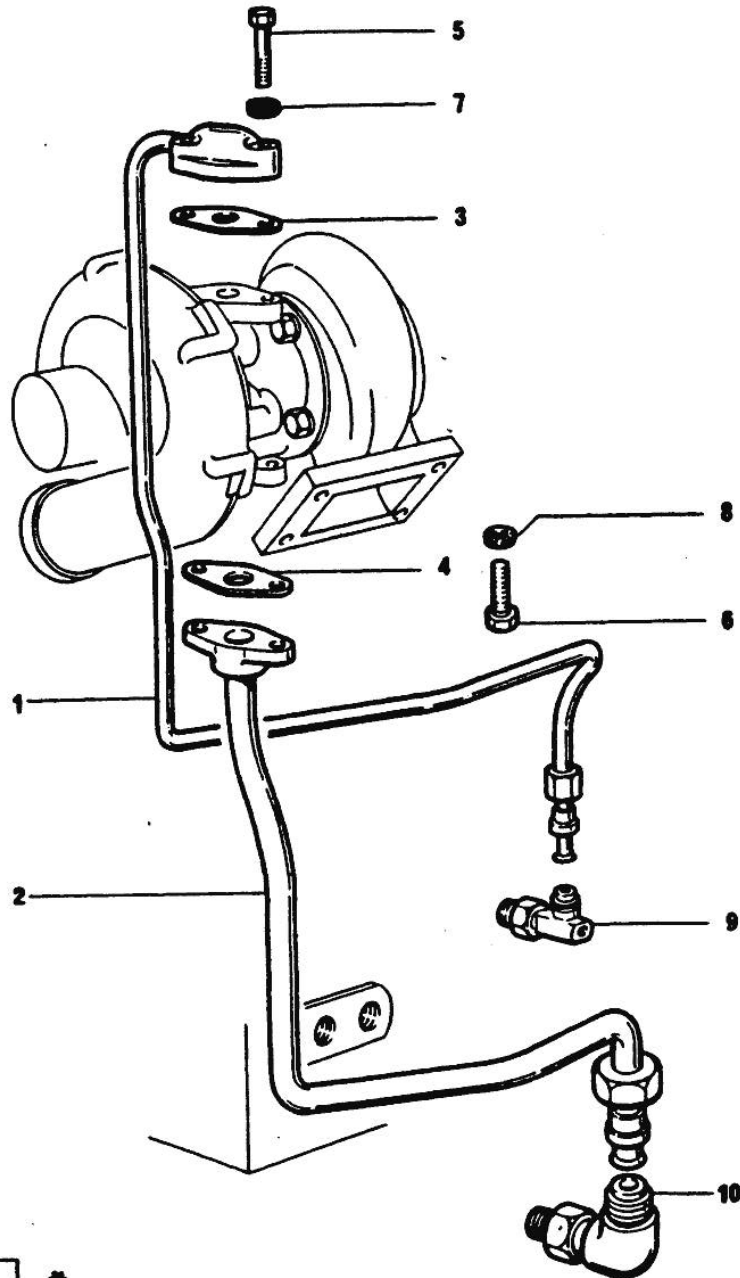


Fig.	P/n	QTY	Name
------	-----	-----	------

Notes:
 [ANTARES 100]

1	0.007.0788.2	1	tube FOR GARRETT OR SCHWITZER TURBOCHARGER
1	0.081.1550.3/10	1	tube FOR KKK TURBOCHARGER
2	0.007.0789.3	1	exhaust pipe FOR GARRETT OR SCHWITZER TURBOCHARGER
2	0.081.1551.3	1	tube FOR KKK TURBOCHARGER
3	0.052.1557.0	1	gasket
4	0.052.1558.0/10	1	gasket
5	2.0112.213.2	2	screw m 8 p.1.25 x 35
6	2.0112.207.2	2	screw m 8 p 1.25 x 20
7	2.1470.004.2	2	lock washer 8
8	2.1470.004.2	2	lock washer 8
9	2.3339.378.2/10	1	pipe fitting
10	2.3264.021.2	1	pipe fitting m 22 p.1.5 - 1" 1/16

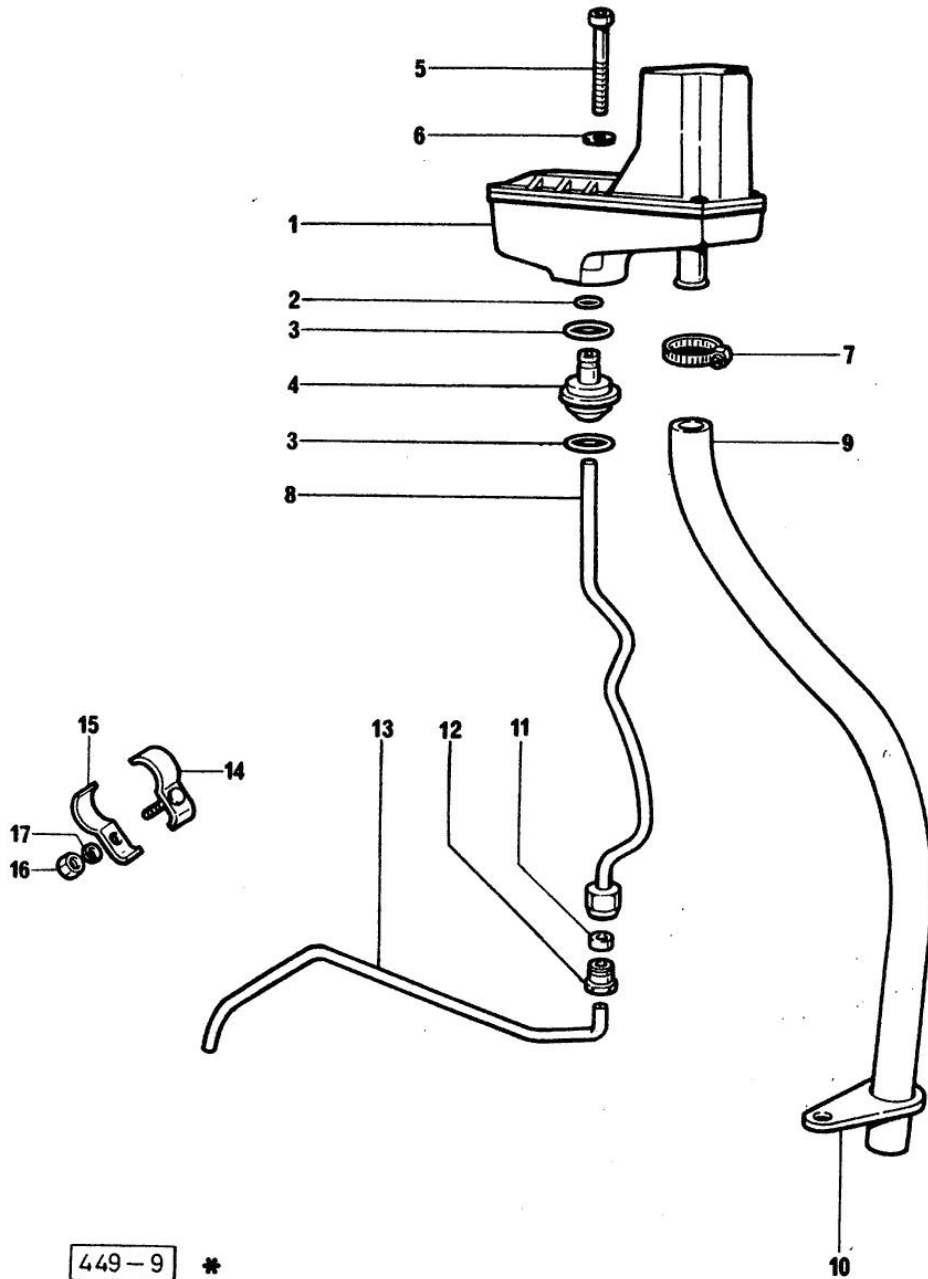
446-9 *

Section: ENGINE
LUBRICATION

Fig.	P/n	QTY	Name
------	-----	-----	------

Notes:
 [ANTARES 100]

1	0.000.0000.1	1	cannot be supplied ☞ 01.00.12
2	2.1532.014.0	1	oil seal 7.65 x 1.78
3	2.1539.072.0	2	special oil seal 23.52 x 1.78
4	0.066.1558.0	1	bush
5	2.0312.221.2	2	screw m 8 p.1.25x75
6	2.1480.014.1	2	washer 8
7	2.6859.073.2	1	clamp
8	0.066.1557.2	1	tube
9	0.066.1559.0	1	tube
10	0.075.1151.0	1	bracket
11	2.3350.003.1	1	nosepiece 8
12	2.3339.418.1	1	pipe fitting m 12 p.1
13	0.066.1556.0	1	tube
14	0.075.1552.2	1	bracket
15	0.075.1552.0	1	bracket
16	2.1011.103.2	1	nut m 6 p.1
17	2.1470.002.2	1	lock washer 6



449-9 *

Section: ENGINE

OIL VAPORS SEDIMENT BOWL PARTS

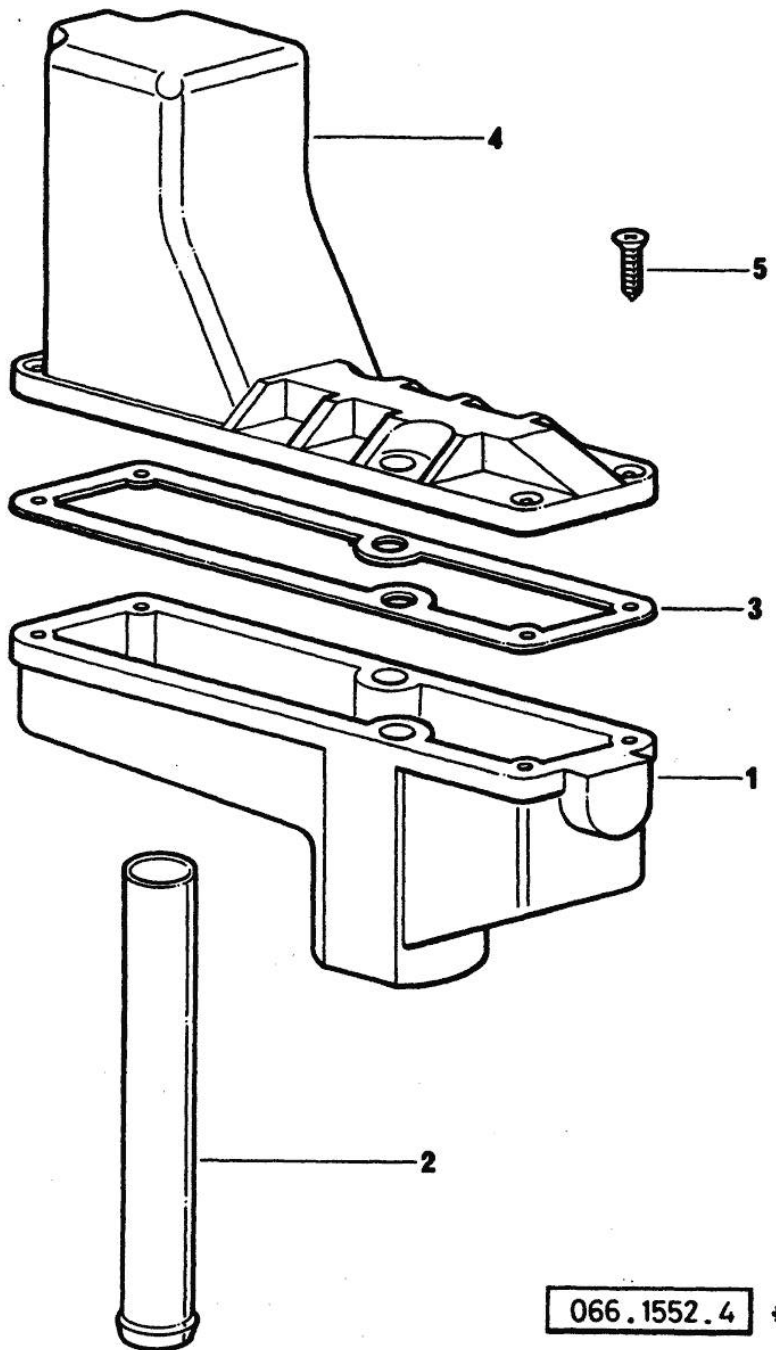


Fig.	P/n	QTY	Name
------	-----	-----	------

Notes:
[ANTARES 100]

1	0.066.1552.0	1	sediment bowl
2	0.066.1555.0	1	tube
3	0.066.1554.0/20	1	gasket
4	0.066.1553.0	1	cover
5	2.0351.203.2	4	screw 3.5x9.5

066.1552.4 *



Suggest:

For more complete manuals. Please go to the home page.

<https://www.ebooklibonline.com>

If the above button click is invalid. Please download this document first, and then click the above link to download the complete manual.

Thank you so much for reading

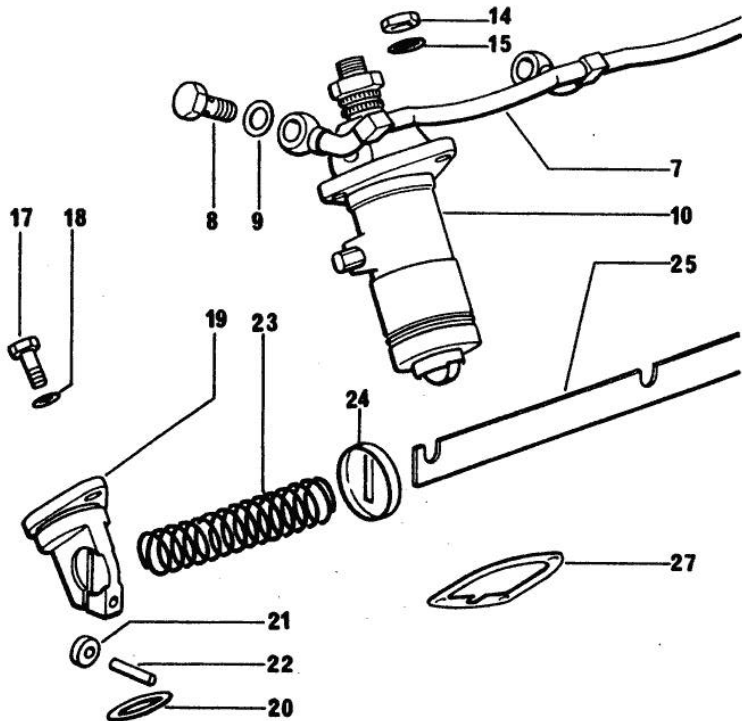
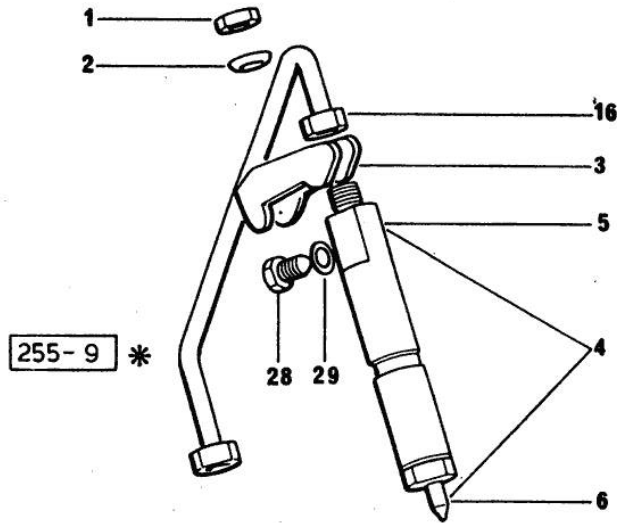
Section: ENGINE

FUEL SUPPLY SYSTEM

Fig.	P/n	QTY	Name
------	-----	-----	------

Notes:
[ANTARES 100]

1	2.1011.421.2	4	nut m 10 p.1.25
2	2.1599.454.0	4	shoulder ring 10.5x17x7.5
3	0.011.5275.0/20	4	bracket
4	2.4719.200.0/10	4	injector assembly BOSCH
5	2.4719.190.0	4	nozzle holder BOSCH ☞ 2.4719.190.0 ☞ 01.00.19
6	2.4729.100.0	4	nozzle BOSCH
7	0.077.1650.3/20	1	tube
8	2.3339.001.2	4	pipe union m 10 p.1x27
9	2.1560.005.0	8	copper gasket 10.2 x 14
10	2.4619.031.0	1	injector pump "A" ☞ 2.4619.031.0 ☞ 01.00.18
10	2.4619.031.1	1	injector pump "B" ☞ 2.4619.031.1 ☞ 01.00.18
10	2.4619.031.2	1	injector pump "C" ☞ 2.4619.031.2 ☞ 01.00.18
10	2.4619.031.3	1	injector pump "D" ☞ 2.4619.031.3 ☞ 01.00.18
14	2.1011.405.2	12	nut m 8 p.1
15	2.1599.458.0/10	12	shoulder ring 8.4x18x2
16	0.065.1650.3/10	4	tube
17	2.0112.207.2	2	screw m 8 p 1.25 x 20
18	2.1310.004.2	2	flat washer 8.4x17
19	0.065.1693.0/30	2	support
20	2.1530.072.0	2	oil seal 26.70x1.78
21	0.065.1660.0	2	roller
22	2.1651.507.0	2	pin 6 x 16
23	2.4019.314.1/20	1	spring 21.5x76x1
24	0.065.1659.0	1	stop
25	0.065.1613.3/20	1	rod
27	0.065.1655.0/10	1	shim mm 0.1
27	0.065.1656.0/10	1	shim mm 0.20
28	2.3119.024.2	4	plug m 6
29	2.1560.001.0	4	gasket 6.2x10



Section: ENGINE

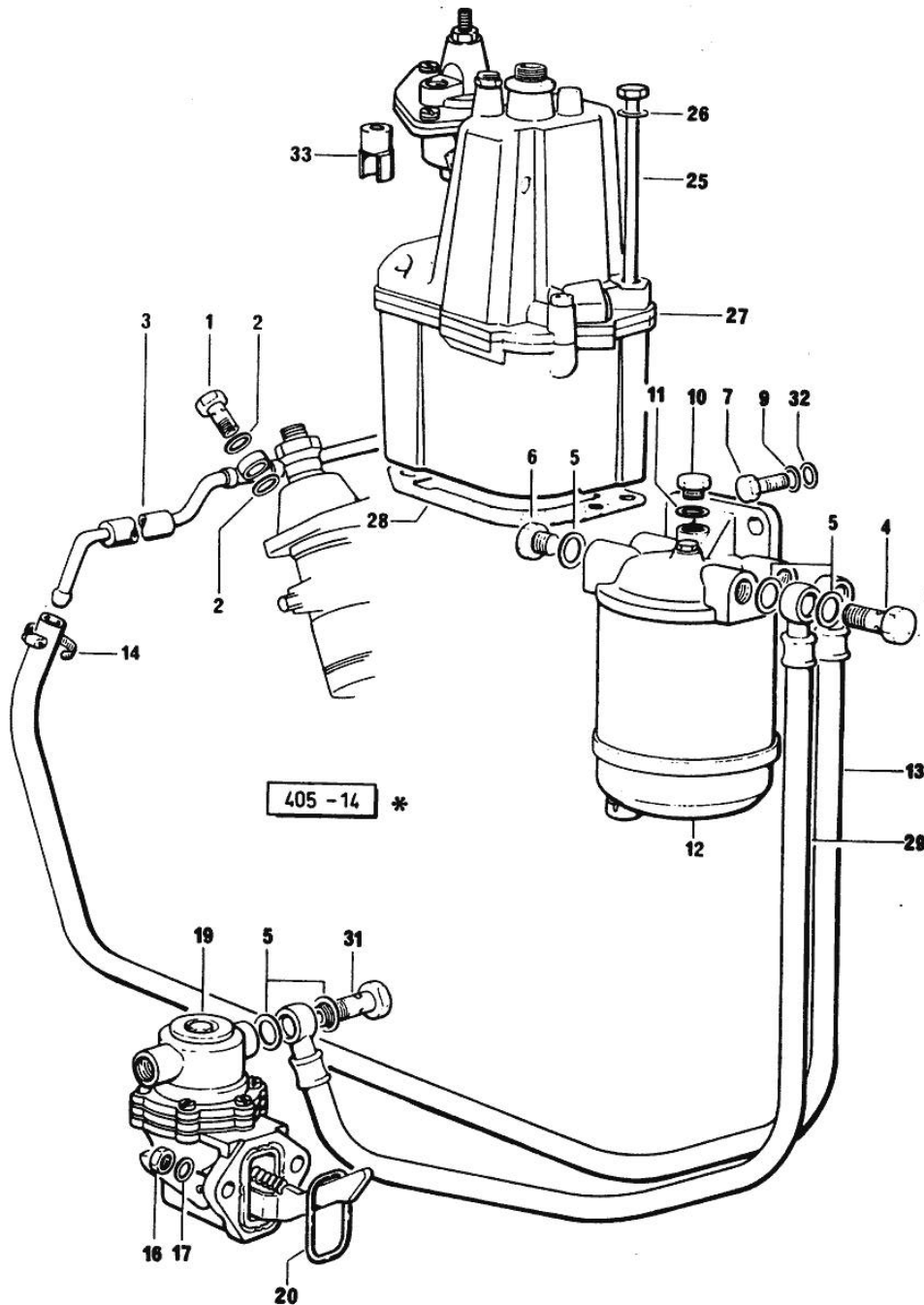
FUEL SUPPLY SYSTEM

Fig.	P/n	QTY	Name
------	-----	-----	------

Notes:

[ANTARES 100]

1	2.3339.118.2	4	pipe union m 12 p.1.5x29
2	2.1560.008.0	8	gasket 12.2 x 18
3	0.065.1697.3/10	1	tube
4	2.3332.004.1	2	pipe union m 14 p.1.5
5	2.1560.010.0	8	gasket 14.2 x 20
6	2.3110.403.2	2	plug m 14
7	2.0112.307.2	2	screw m 10 p.1.5 x 20
9	2.1470.006.2	2	lock washer 10
10	2.3119.005.2	1	plug m 10 p.1.5
11	2.1560.005.0	1	copper gasket 10.2 x 14
12	2.4319.060.0/20	1	fuel filter ☞ 2.4319.060.0/20 ☞ 01.00.20
13	0.077.1646.3/10	1	tube
14	2.6851.002.0	1	clamp Ø 20/32
16	2.1011.405.2	2	nut m 8 p.1
17	2.1470.004.2	2	lock washer 8
19	2.4519.310.0	1	feed pump ☞ 2.4519.310.0 ☞ 01.00.21
20	2.1539.045.0	1	special oil seal 37.77x2.62
25	2.0399.103.2	2	screw m 8 p 1.25 x 135
26	2.1480.014.1	2	washer 8
27	0.014.3013.4/10	1	regulator ☞ 01.00.17
28	0.009.3880.0/20	1	gasket
29	0.077.1645.3/10	1	tube
31	2.3339.357.2/10	1	pipe union m 14 p.1.5x28
32	2.1310.006.2	2	flat washer 10.5x21
33	0.070.1655.0	2	cap



<https://www.ebooklibonline.com>

Hello dear friend!

Thank you very much for reading.

Enter the link into your browser.

The full manual is available for immediate download.

<https://www.ebooklibonline.com>