

CONDENSER AND FILTER

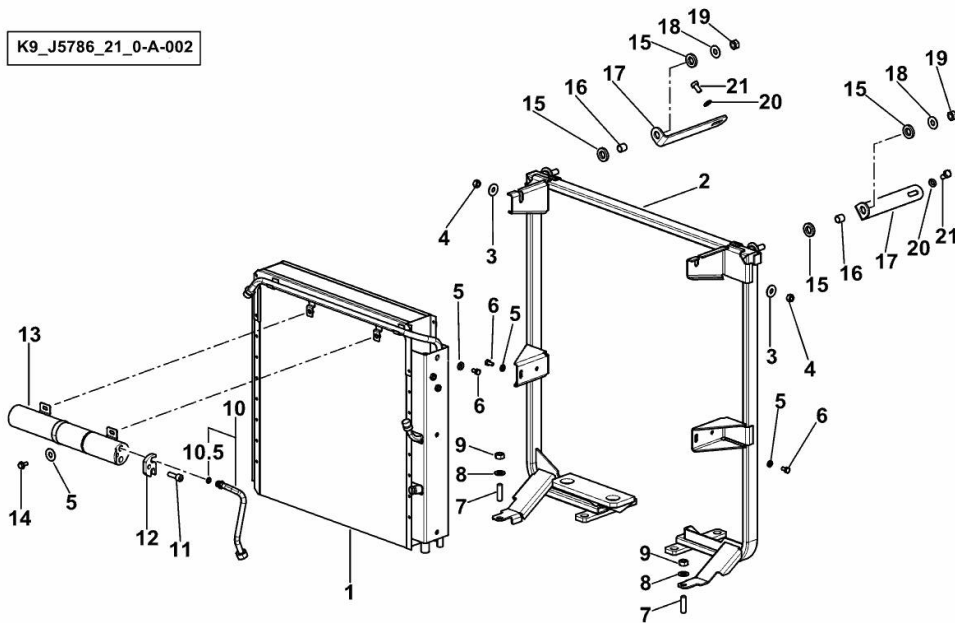
Fig.	P/n	QTY	Name
------	-----	-----	------

Notes:

[IRON³ 190 DCR ->ZKDS7802W0LS10010]

1	0.016.1816.4/10	1	condenser
2	0.016.4187.4/40	1	chassis frame
3	2.1312.004.2	2	washer 8x24x2
4	2.0112.205.2	4	screw m 8 p.1.25 x 16
5	2.1310.002.2	5	flat washer 6.4x12.5
6	2.0112.003.2	5	screw m 6 p.1 x 12
7	2.0422.303.2	2	stud bolt m 10 p.1.5 x 20
8	2.1475.003.2	4	washer 10
9	2.1011.106.2	4	nut m 10 p.1.5
10	0.015.6507.4	1	tube
10.5	2.1539.249.0	1	gasket
11	2.0312.208.2	1	screw m 8 p.1.25 x 25
12	0.015.4226.0/20	1	spacer
13	0.015.4222.4/30	1	filter R 134a
15	0.136.7387.0	4	rubber plug
16	2.1549.062.2	2	spacer 11x14x13
17	0.016.3326.0	2	bracket
18	2.1599.044.2	2	shoulder ring
19	2.1011.421.2	2	nut m 10 p.1.25
20	2.1310.004.2	5	flat washer 8.4x17
21	2.0112.205.2	2	screw m 8 p.1.25 x 16 (10010 <-)

K9_J5786_21_0-A-002



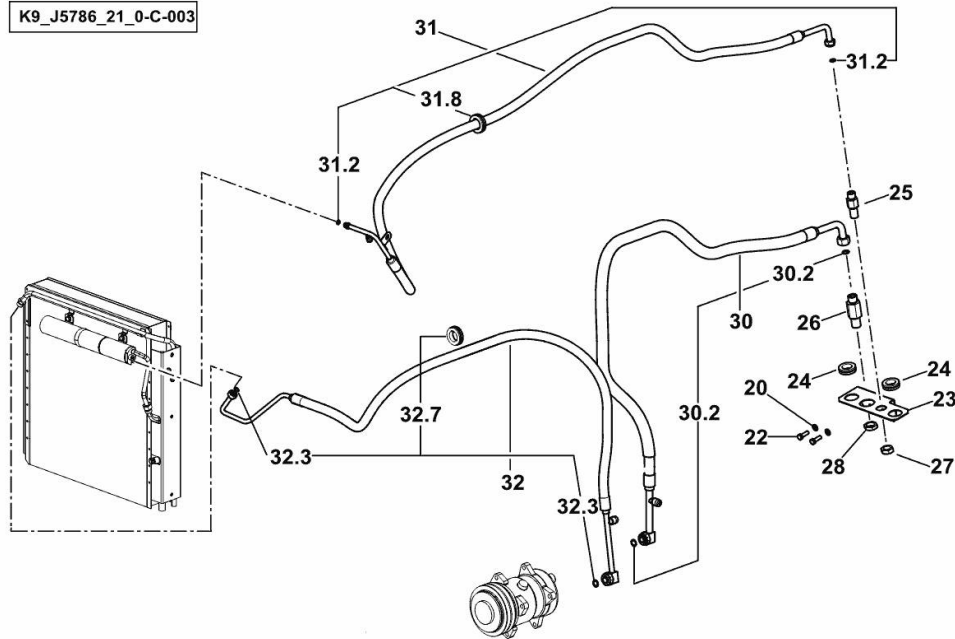
AIR CONDITIONING SYSTEM

Fig.	P/n	QTY	Name
------	-----	-----	------

Notes:

[IRON³ 190 DCR ->ZKDS7802W0LS10010]

K9_J5786_21_0-C-003



20	2.1310.004.2	5	flat washer 8.4x17
22	2.0112.209.2	2	screw m 8 p 1.25 x 25
23	0.017.1782.0	1	bracket
24	2.6560.020.0	2	grommet 25x2.5
25	0.017.1330.0	1	pipe fitting
26	0.017.1328.0	1	pipe fitting
27	2.1099.077.2	1	nut
28	2.1099.098.2	1	special nut 7/8"-14
30	0.016.6741.3/20	1	tube
30.2	2.1533.035.0	2	oil seal 14x1.78
31	0.016.4117.3/30	1	tube
31.2	2.1533.025.0	1	oil seal 10.82x1.78
31.8	2.6560.023.0	1	wire guide
32	0.016.4118.3/30	1	tube
32.3	2.1533.035.0	1	oil seal 14x1.78
32.7	2.6560.023.0	1	wire guide

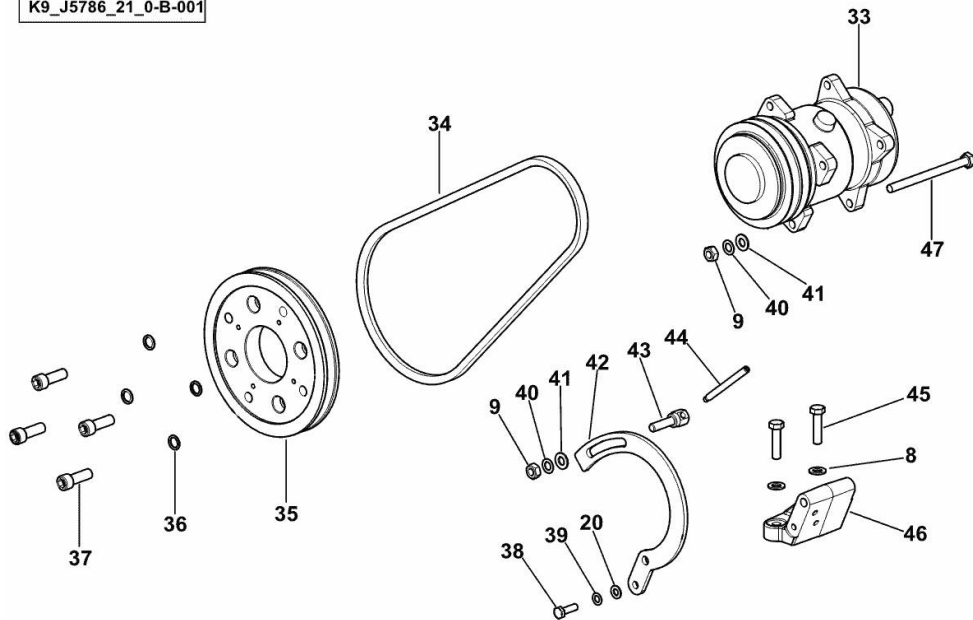
COMPRESSOR

Fig.	P/n	QTY	Name
------	-----	-----	------

Notes:

[IRON³ 190 DCR ->ZKDS7802W0LS10010]

K9_J5786_21_0-B-001



8	2.1475.003.2	4	washer 10
9	2.1011.106.2	4	nut m 10 p.1.5
20	2.1310.004.2	5	flat washer 8.4x17
33	04437339/10	1	compressor R 134a ☞ 04437339/10
34	2.4119.092.0	1	vee belt AV 13x1090 mm
35	0.014.8785.0/10	1	pulley (10021 <-)
35	0.017.8353.0	1	pulley (-> 10023)
36	2.1480.016.2	4	washer 12
37	2.0312.412.2	4	screw m 12 p.1.75x35 (10021 <-)
37	2.0313.412.2	4	screw m 12 p.1.75x35 (-> 10023)
38	2.0114.209.2	1	screw m 8 x 25
39	2.1470.004.2	1	lock washer 8
40	2.1470.006.2	2	lock washer 10
41	2.1310.006.2	2	flat washer 10.5x21
42	0.014.9921.2	1	bracket
43	2.0399.222.2	1	screw m 10 p.1.5 x 35
44	2.0399.221.2	1	screw m 8 p.1.25 x 95
45	2.0114.315.2	2	screw m 10 p.1.5 x 40
46	0.014.9918.0/10	1	support
47	2.0112.335.2	1	screw m 10 p.1.5 x 130

<https://www.ebooklibonline.com>

Hello dear friend!

Thank you very much for reading.

Enter the link into your browser.

The full manual is available for immediate download.

<https://www.ebooklibonline.com>

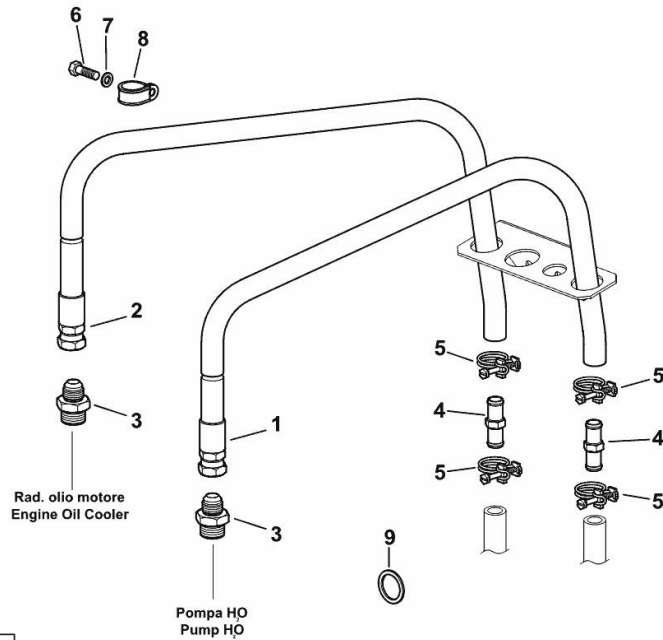
HEATING - PIPES

Fig.	P/n	QTY	Name
------	-----	-----	------

Notes:

[IRON³ 190 DCR ->ZKDS7802W0LS10010]

1	0.015.5860.3	1	tube
2	0.013.2397.3	1	tube
3	2.3249.080.2	2	pipe fitting m 26 p.1.5 - 7/8" 14 JIC
4	2.3249.661.0	2	pipe fitting
5	2.6859.102.0	4	clamp Ø 18.5/22
6	2.0112.205.2	1	screw m 8 p.1.25 x 16
7	2.1310.004.2	1	flat washer 8.4x17
8	2.6839.054.0	1	clamp Ø 20/25
9	2.1569.068.0	2	gasket 26.3x34



K9_J2386_13_0-A-001

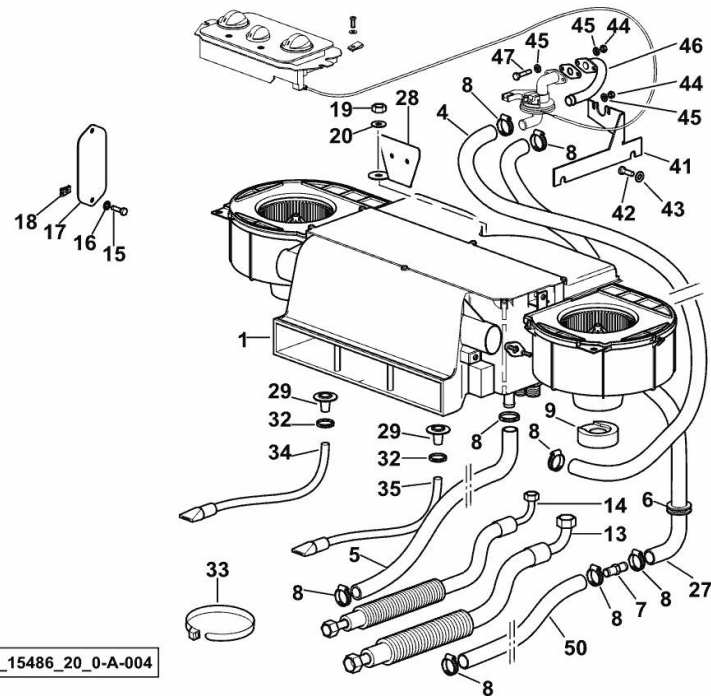
MANUAL CLIMATE CONTROL SYSTEM

Fig.	P/n	QTY	Name
------	-----	-----	------

Notes:

[IRON³ 190 DCR ->ZKDS7802W0LS10010]

1	0.010.9139.4/50	1	air-conditioning sys. ☞ 0.010.9139.4/50
4	0.011.3189.0	1	tube
5	0.011.8070.0/20	1	tube
6	2.6569.047.0	1	rubber plug
7	2.3249.661.0	1	pipe fitting
8	2.6859.052.2	8	clamp
9	0.014.8200.0	2	block
13	0.011.8071.3/20	1	tube
14	0.011.8072.3/20	1	tube
15	2.0112.007.2	2	screw m 6 p.1 x 20
16	2.1470.002.2	2	lock washer 6
17	0.011.3788.0	1	plate
18	2.6999.064.6	2	special nut m 6
19	2.1011.105.2	1	nut m 8 p.1.25
20	2.1470.004.2	1	lock washer 8
27	0.011.5700.2/10	1	tube
28	04453445	1	bracket
29	0.013.0425.0	2	tube
32	2.6851.001.0	2	clamp Ø 16/25
33	2.6852.203.0	1	clamp 292 x 4.8
34	0.013.0441.3	1	tube
35	0.013.0441.3	1	tube
41	0.011.5788.0/10	1	support
42	2.0362.311.3	2	screw m 8 x 40
43	2.1310.004.2	2	flat washer 8.4x17
44	2.1011.103.2	4	nut m 6 p.1
45	2.1310.002.2	2	flat washer 6.4x12.5
46	0.011.5956.2/20	1	tube
47	2.0112.011.2	2	screw m 6 p.1x30
50	0.012.9548.0	1.25	tube 16x25



AIR CONDITIONER CONTROLS UNIT

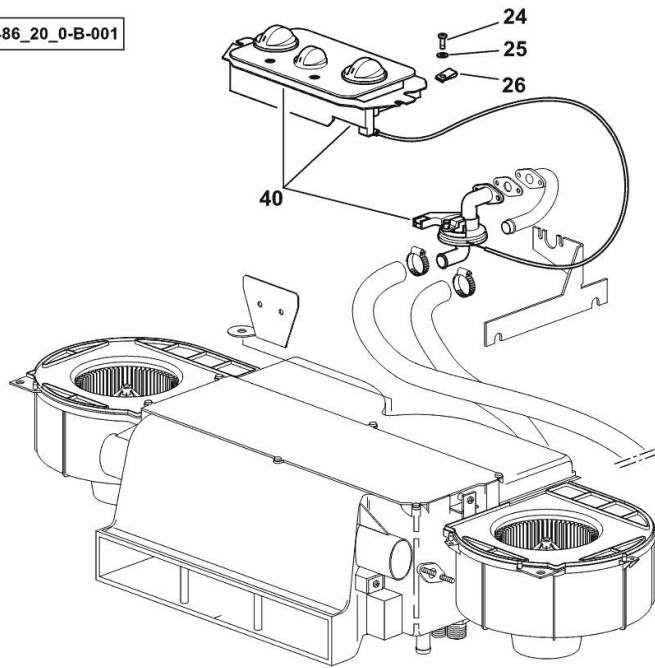
Fig.	P/n	QTY	Name
------	-----	-----	------

Notes:

[IRON³ 190 DCR ->ZKDS7802W0LS10010]

24	2.0350.456.3	4	screw
25	2.1310.001.3	4	washer 5.3 x 10
26	2.6999.061.0	4	clip 4.2
40	0.011.5793.4	1	controls assembly ☞ 0.011.5793.4

K9_15486_20_0-B-001



AIR CONDITIONER PARTS

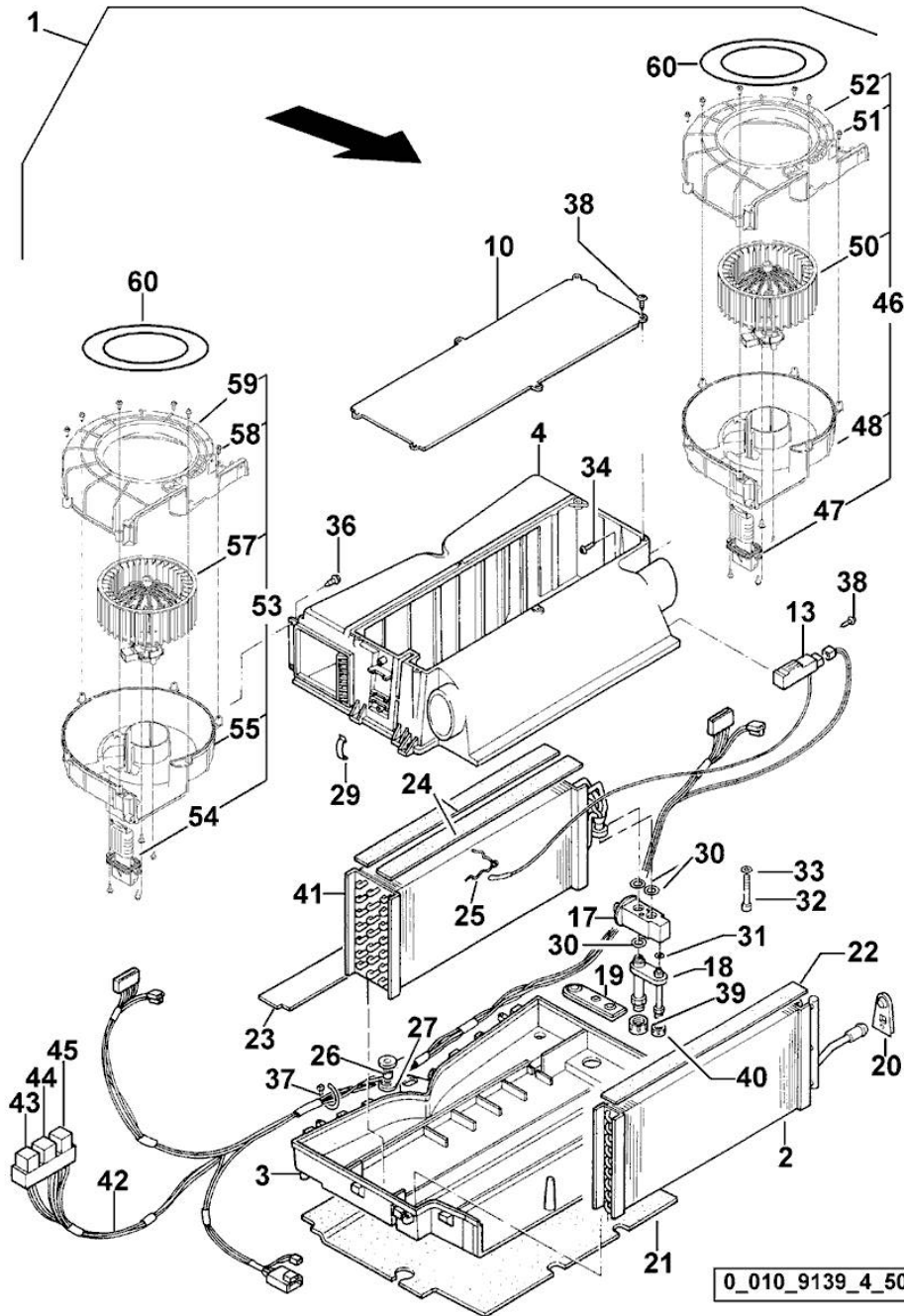


Fig.	P/n	QTY	Name
1	0.010.9139.4/50	1	air-conditioning sys.
2	0.900.0784.0	1	radiator
3	0.010.2534.1	1	box
4	0.010.2534.2	1	box
10	0.010.2536.2	1	cover
13	0.900.0793.4	1	thermostat
17	0.010.2091.0	1	valve R 134
18	0.010.2538.2	1	pipe fitting
19	0.010.2539.0	1	gasket
20	0.010.2539.1	1	gasket
21	0.010.2539.2	1	gasket
22	0.010.2540.0	1	gasket
23	0.010.2540.1	1	division
24	0.010.2540.0	2	gasket
25	0.010.2540.2	1	clip
26	0.98538.71.1	1	spacer
27	0.010.2541.0	2	rubber plug
29	0.010.2541.2	11	clip
30	0.010.2128.1	3	gasket
31	0.010.2542.0	1	special oil seal
32	0.010.2542.1	2	screw m 6 x 50
33	0.010.2542.2	2	washer 6, d128
34	0.010.2543.0	2	screw m 3.5x16
36	0.010.2543.2	14	screw m 3.5x12
37	0.010.2544.0	3	clamp
38	0.010.2543.2	5	screw m 3.5x12
39	0.010.2544.1	1	plug
40	0.010.2544.2	1	plug
41	0.900.0783.9	1	radiator
42	0.900.0783.8	1	electric cable
43	0.010.3317.2	1	relay 15A NA BROWN
44	0.010.3318.0	1	relay 20A NA WHITE
45	0.900.0049.4	1	relay 20A NA BLACK
46	0.000.0000.1	1	cannot be supplied
47	0.010.2535.1	1	resistance
48	0.900.2350.4	1	screw conveyor
50	0.900.0035.3	1	fan dx/rh/re WHITE
51	0.900.0782.2	10	screw 4 x 12
52	0.900.0782.0	1	screw conveyor
53	0.000.0000.1	1	cannot be supplied

AIR CONDITIONER PARTS

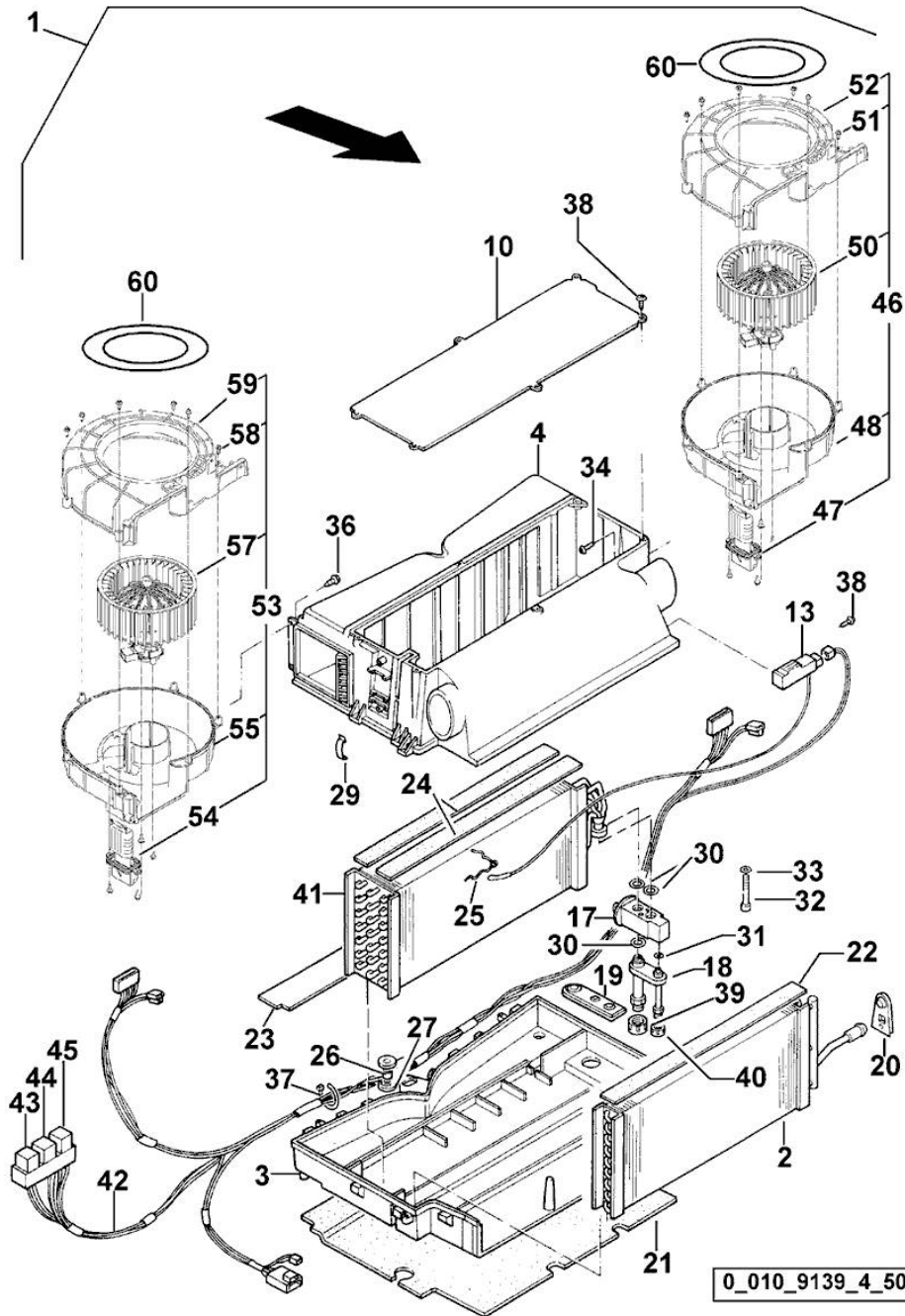


Fig.	P/n	QTY	Name
54	0.900.0782.4	1	resistance
55	0.900.0967.7	1	screw conveyor
57	0.900.0035.4	1	fan sx/lh/li GREEN
58	0.900.0782.2	10	screw 4 x 12
59	0.900.0967.9	1	screw conveyor
60	0.900.0783.4	1	gasket

AIR CONDITIONER PARTS

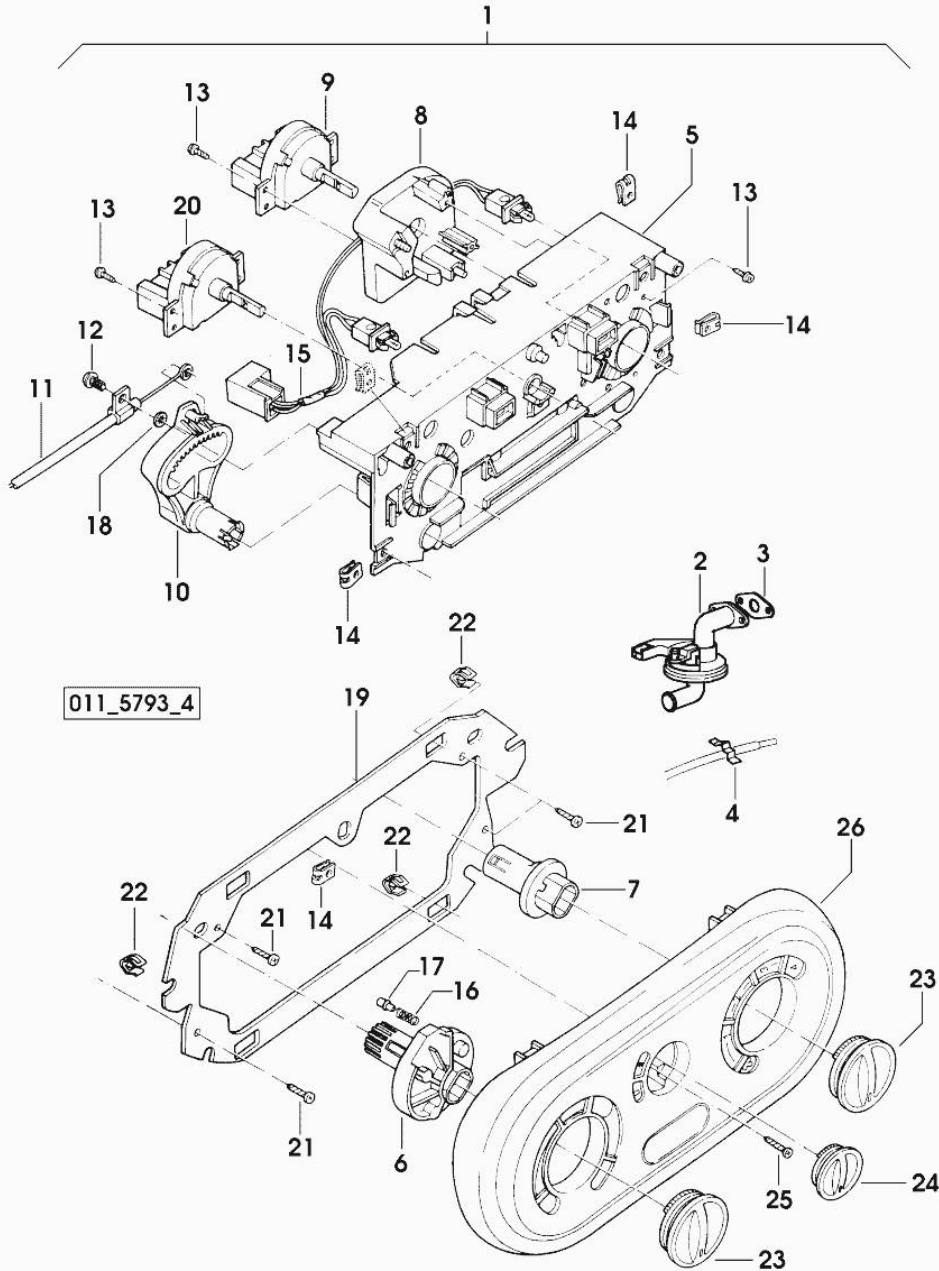


Fig.	P/n	QTY	Name
1	0.011.5793.4	1	controls assembly
2	0.010.2526.0	1	cock
3	0.010.2526.1	1	gasket
4	0.010.2526.2	1	clip
5	0.010.2527.0	1	support
6	0.010.2527.1	1	pin
7	0.010.2527.2	1	pin dx/rh/re
8	0.010.2528.0	1	support
9	0.010.2528.1	1	switch
10	0.010.2528.2	1	lever
11	0.010.2529.0	1	transmission
12	0.010.2529.1	1	screw m 5 x 16
13	0.010.2529.2	7	screw m 3x10
14	0.010.2530.0	5	clip
15	0.010.2530.1	1	electric cable
16	0.010.2530.2	1	spring
17	0.010.2531.0	1	cap
18	0.010.2531.1	1	washer 4x8
19	0.010.2531.2	1	bracket
20	0.010.2532.0	1	switch
21	0.010.2119.2	4	screw 4 x 12
22	0.010.2532.1	4	clip
23	0.010.2532.2	2	knob
24	0.010.2533.0	1	knob
25	0.010.2533.1	1	screw m 3.5x13
26	0.010.2533.2	1	cover



Suggest:

For more complete manuals. Please go to the home page.

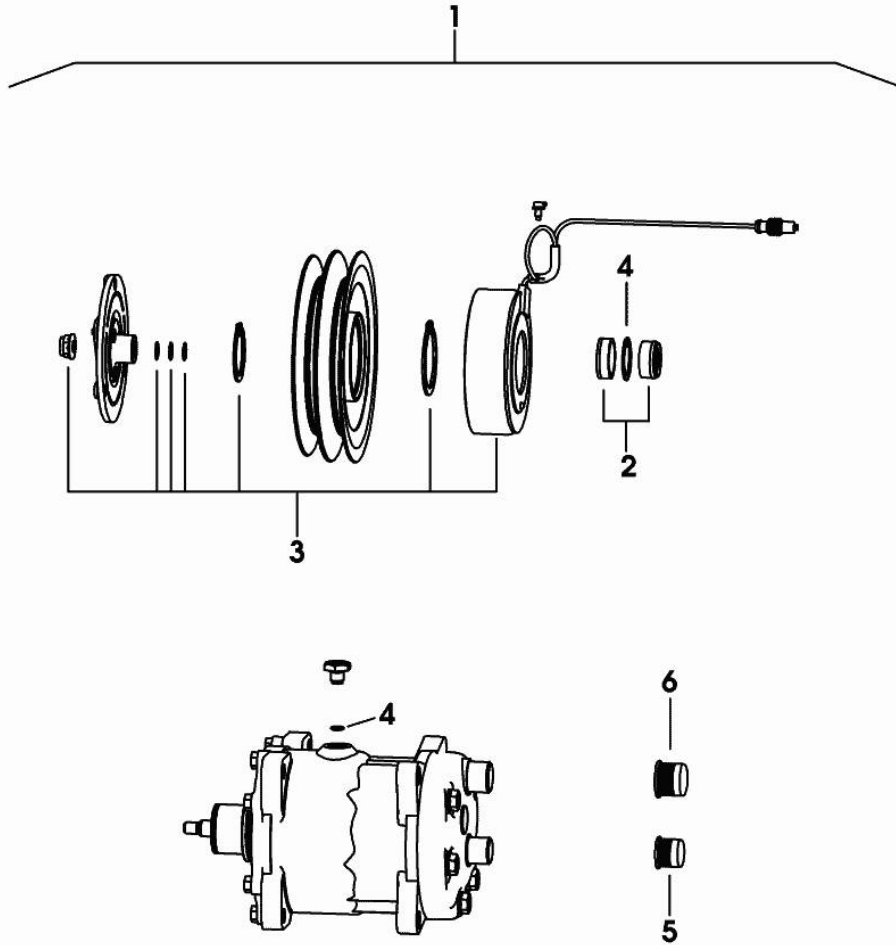
<https://www.ebooklibonline.com>

If the above button click is invalid. Please download this document first, and then click the above link to download the complete manual.

Thank you so much for reading

COMPRESSOR

Fig.	P/n	QTY	Name
1	04437339/10	1	compressor R 134a
2	0.900.0005.8	1	accessories
3	0.900.0005.9	1	accessories
4	0.010.3629.1	1	special oil seal
5	0.010.3630.0	1	plug
6	0.010.3629.2	1	plug



04437339_10

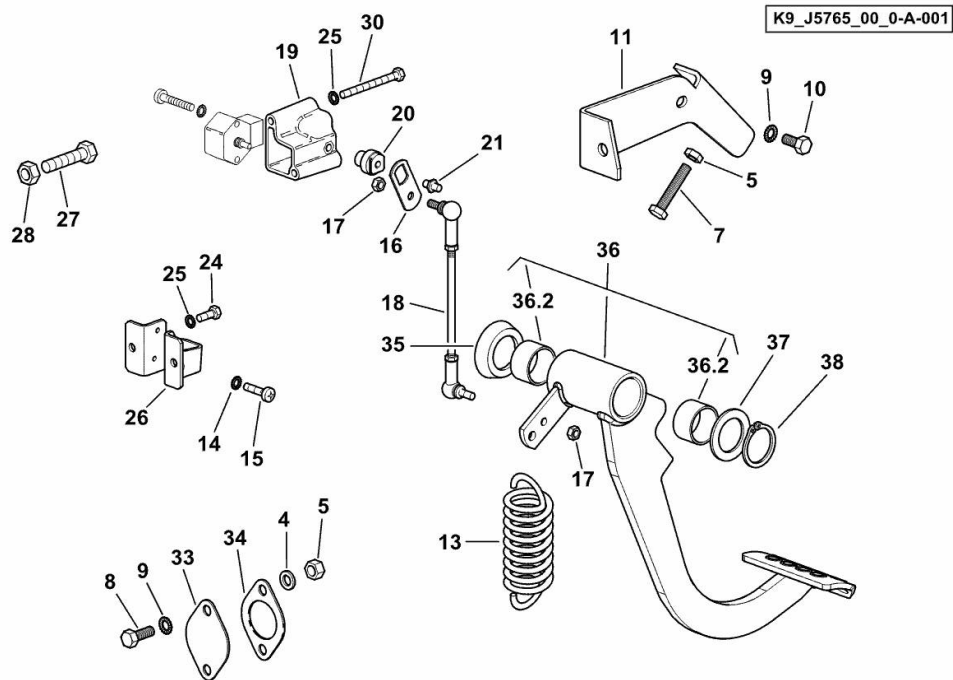
CLUTCH CONTROL

Fig.	P/n	QTY	Name
------	-----	-----	------

Notes:

[IRON³ 190 DCR ->ZKDS7802W0LS10010]

4	2.1310.004.2	2	flat washer 8.4x17
5	2.1011.105.2	3	nut m 8 p.1.25
7	2.0112.217.2	1	screw m 8 p.1.25 x 45
8	2.0112.207.2	2	screw m 8 p 1.25 x 20
9	2.1470.004.2	3	lock washer 8
10	2.0112.204.2	1	screw m 8 p.1.25x14
11	0.011.2338.3	1	bracket
13	2.4049.239.2/10	1	spring
14	2.1470.052.2	4	lock washer 4
15	2.0332.209.2	2	screw m 4x30
16	0.011.2793.0/10	1	lever
17	2.1120.103.2	2	nut m 6
18	0.011.2702.4	1	rod
19	0.011.2317.2/10	1	support
20	0.010.4745.2/20	1	joint
21	2.1699.515.2	1	pin Ø 6 x m 6
24	2.0112.007.2	2	screw m 6 p.1 x 20
25	2.1470.002.2	4	lock washer 6
26	0.011.2316.0/10	1	support
27	2.0112.317.2	1	screw m 10 p.1.5 x 45
28	2.1011.106.2	1	nut m 10 p.1.5
30	2.0112.022.2	2	screw m 6 x 65, d931
33	0.009.0481.0	1	plate
34	0.009.0480.0	1	gasket
35	2.1599.546.0	1	washer 30.5
36	0.016.1723.4/10	1	pedal
36.2	2.1559.117.0/20	1	special bushing 30x34x20
37	2.1599.268.0	1	shoulder ring
38	2.1410.012.1	1	circlip 30



<https://www.ebooklibonline.com>

Hello dear friend!

Thank you very much for reading.

Enter the link into your browser.

The full manual is available for immediate download.

<https://www.ebooklibonline.com>