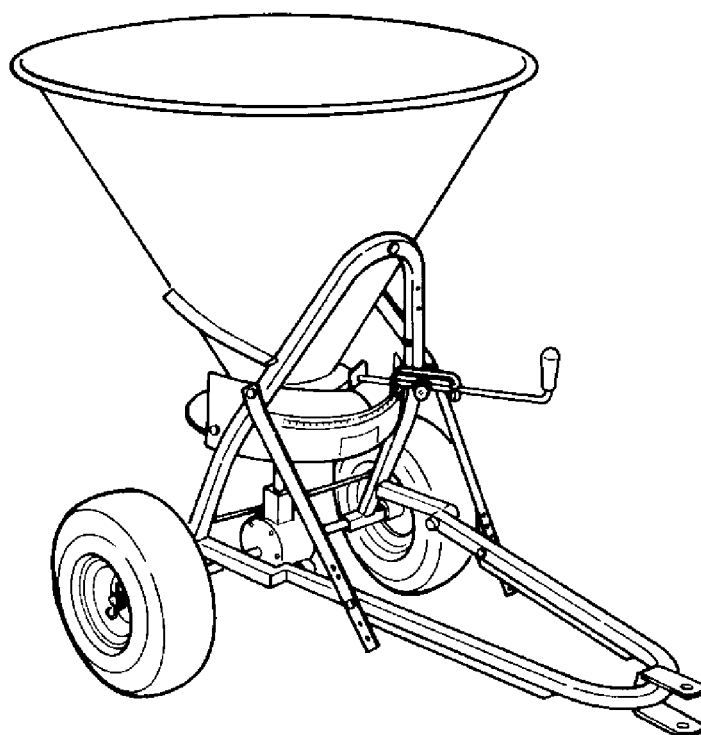


OPERATOR'S MANUAL

GROUND DRIVEN SPREADERS

SS1022B

SS1035B



FRONTIER
EQUIPMENT

Manual 5BP960375B
Date 06/05/2010

SAFETY

Take note! This safety alert symbol found throughout this manual is used to call your attention to instructions involving your personal safety and the safety of others. Failure to follow these instructions can result in injury or death.



*This symbol means:
ATTENTION!
BECOME ALERT!
YOUR SAFETY IS INVOLVED!*

Signal Words

Note the use of the signal words DANGER, WARNING and CAUTION with the safety messages. The appropriate signal words for each have been selected using the following guidelines:



DANGER: Indicates an imminently hazardous situation that, if not avoided, will result in death or serious injury.



WARNING: Indicates a potentially hazardous situation that, if not avoided, could result in death or serious injury, and includes hazards that are exposed when guards are removed. It may also be used to alert against unsafe practices.



CAUTION: Indicates a potentially hazardous situation that, if not avoided, may result in minor or moderate injury.

INDEX

1 - GENERAL INFORMATION	4
1.01 - General	4
1.02 - Model and Serial Number ID	4
1.03 - Assembly Instructions for Models SS1022B & SS1035B	5
2 - SAFETY PRECAUTIONS	8
2.01 - Preparation	8
2.02 - Starting and Stopping	9
2.03 - Messages and Signs	9
3 - OPERATION	11
3.01 - Operational Safety	11
3.02 - Setup	12
3.03 - Pre-Operational Check	13
3.04 - Attaching to the Tractor	13
3.05 - Start Up	13
3.06 - Operating Techniques	14
3.07 - Uneven Terrain	16
4 - MAINTENANCE	17
4.01 - Maintenance Safety	17
4.02 - Service	18
4.03 - Transport	18
5 - REPAIR PROCEDURES	22
5.01 - Suggested Spare Parts	22
5.02 - Storage	22
6 - TROUBLESHOOTING	23
7 - PRE-DELIVERY CHECKLIST	24
PARTS MANUAL	25

<https://www.ebooklibonline.com>

Hello dear friend!

Thank you very much for reading.

Enter the link into your browser.

The full manual is available for immediate download.

<https://www.ebooklibonline.com>

1 - GENERAL INFORMATION

Thank you and congratulations for having chosen our implement. Your new fertilizer spreader is a technologically advanced machine constructed of high quality, sturdy components that will fulfill your working expectations.

Read this manual carefully. It will instruct you on how to operate and service your fertilizer spreader safely and correctly. Failure to do so could result in personal injury and/or equipment damage.

1.01 - General



CAUTION: Unless otherwise specified, all hardware is metric. Use only metric tools on metric hardware. Other tools that do not fit properly can slip and cause injury.



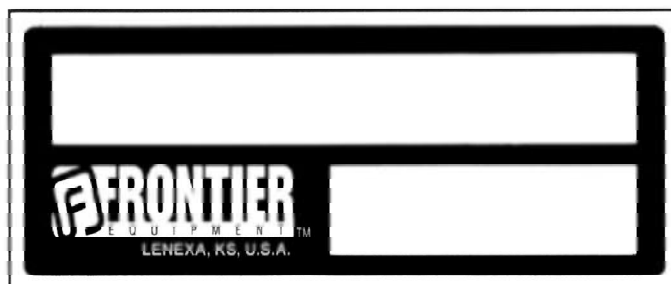
CAUTION: Right hand and left hand sides of the implement are determined by facing in the direction the implement will travel when going forward (see fig. 3).

Warranty coverage is provided by John Deere according to the terms of the Agricultural/Commercial & Consumer Equipment Warranty Statement. Carefully read the warranty statement on the back of your original purchase order for details on coverage and limitations of this warranty.

Your Authorized Company Dealer has genuine parts in stock. Only these approved replacement parts should be used.

1.02 - Model and Serial Number ID

Attached to the hopper is an ID plate showing the model and the serial number. Record your implement model and serial number in the space provided below. Your dealer needs this information to give you prompt, efficient service when you order parts.



1.03 - Assembly Instructions for Models SS1022B & SS1035B

NOTE: All hardware needed for assembly will be found in the hardware bag or on the machine. Assembly will be easier if all parts are loosely assembled before tightening the hardware.

Each unit is shipped with a hardware bag that consists of the following:		
Description	Model SS1022B Qty.	Model SS1035B Qty.
Stirrer guard (#3, fig. 2)	1	1
Guard (#14, fig. 2)	1	1
Flow control assembly (#19, fig. 2)	1	1
Spreader disc (#46, fig. 2)	1	1
Mobile shutter (#48, fig. 2)	1	1
Air tire (#25 & 56, fig. 2)	2	2
Bolt bag contains the following:		
Stirrer (#4, fig. 2)	1	1
Threaded bushing (#7, fig. 2)	1	1
Cover (#60, fig. 2)	1	1
Bolt CR M08-1.25x25 C4.6 Z (#50, fig. 2)	2	2
Bolt CR M08-1.25x40 C4.6 Z (#8, fig. 2)	1	1
Bolt HH M08-1.25x16 C8.8 Z F (#16, fig. 2)	2	2
Bolt HH M08-1.25x40 C8.8 Z P (#15, fig. 2)	6	6
Bolt HH M06-1.00x30 C8.8 Z P (#5, fig. 2)	1	1
Bolt HH M06-1.00x45 C8.8 Z P (#26, fig. 2)	1	1
Nut HH M30-2.00 C6 Z TN (#47, fig. 2)	1	1
Nut HH M08-1.25 C6 Z MD (#10, fig. 2)	11	11
Nut ES M06-1.00 Z TK (#6, fig. 2)	2	2
Washer lock Ø8 (#59, fig. 2)	3	3
Washer flat Ø6 (#29, fig. 2)	4	4
Washer flat Ø8 (#9, fig. 2)	8	8
Washer fender Ø8 (#27, fig. 2)	3	3
Washer flat Ø20 (#31, fig. 2)	2	2
Shim Ø28 (#62, fig. 2)	2	2
Hairpin cotter Ø5 (#43, fig. 2)	1	1
Hairpin cotter Ø4 bent (#45, fig. 2)	2	2



CAUTION: Stand clear of bands when cutting as they could be under sufficient tension to cause them to fly loose. Take care in removing bands and wire. They often have extremely sharp edges and cut very easily.

To assemble the spreader do the following:

1. Locate the hopper (**see #2, fig. 2**), the mobile shutter (**#48, fig. 2**), the threaded bushing (**#7, fig. 2**) and the M30 nut (**#47, fig. 2**). Slide the threaded bushing (**#7, fig. 2**) through the bottom hole of the hopper (**#2, fig. 2**) and fasten the mobile shutter (**#48, fig. 2**) to it with the M30 nut (**#47, fig. 2**).
2. Fasten the guard (**#14, fig. 2**) onto the frame (**#11, fig. 2**) using the M8x16 bolts (**#16, fig. 2**), the Ø8 washers (**#9, fig. 2**) and M8 nuts (**#10, fig. 2**).
3. Slide the spreader disc (**#46, fig. 2**) and the hopper assembly over the outgoing shaft (**#44, fig. 2**) and use the M8x40 carriage bolt (**#8, fig. 2**), Ø8 fender washer (**#27, fig. 2**) and M8 nut (**#10, fig. 2**) to fasten the hopper to the frame (**#11, fig. 2**). Pin the spreader disc to the shaft with the hairpin cotter (**#43, fig. 2**).

4. Place stirrer (#4, fig. 2) and cover (#60, fig. 2) over the outgoing shaft (#44, fig. 2) and secure them using the M6x30 bolt (#5, fig. 2), the Ø6 washers (#29, fig. 2) and the M6 elastic stop nut (#6, fig. 2).
5. Place the stirrer guard (#3, fig. 2) inside the hopper (#2, fig. 2) and fasten with the two M8x20 carriage bolts (#50, fig. 2), Ø8 fender washers (#27, fig. 2) and M8 nuts (#10, fig. 2) that connect the sides of the frame (#11, fig. 2) to the hopper (#2, fig. 2).
6. Slide the flow control assembly (#19, fig. 2) into the slot of the mobile shutter (#48, fig. 2) and fasten to the guard (#14, fig. 2) with the adjustment knob (#20, fig. 2) and Ø8 washer (#58, fig. 2).
7. Assemble the wheels (#25 & 56, fig. 2) making sure that the side of the wheel hubs that has the hole is facing the inside of the spreader. Place the Ø28 shims (#62, fig. 2) on each side of the axle (#28, fig. 2) before inserting the wheels. Assemble the wheels (#25 & 56, fig. 2) on the axle (#28, fig. 2), followed by the Ø20 washers (#31, fig. 2) and secure them in place with the hairpin cotters (#45, fig. 2). On the right wheel (#25, fig. 2), insert the M6x45 bolt (#26, fig. 2) through the hole in the hub and axle, place the Ø6 washers (#29, fig. 2) on each side of the hub and secure it in place with the M6 lock nut (#6, fig. 2).
8. The towing hitch (#51, fig. 2) is attached to the frame with two hitch adjustment plates, one right (#17, fig. 2) and one left (#18, fig. 2). Attach the upper end of the hitch adjustment plate to the hole in the square tubing of the frame (#11, fig. 2) using the M8x40 bolts (#15, fig. 2). Use the M8x40 bolts (#15, fig. 2), the Ø8 washers (#9, fig. 2) and the M8 nuts (#10, fig. 2) to secure the lower end of the hitch adjustment plates (the one with the series of holes) to the towing hitch (#51, fig. 2). Select the hole which best fits the pulling unit drawbar enabling the spreader to run parallel to the ground.
9. To attach the hitch connection plates (#21 & #22, fig. 2), slide the round stock ends of these two plates through the tubes which are welded to the ends of the towing hitch (#51, fig. 2). Bolt the hitch connection plates (#21 & #22, fig. 2) to the outer end of the frame (#11, fig. 2) using M8x40 bolts (#15, fig. 2), Ø8 washers (#9, fig. 2) and M8 nuts (#10, fig. 2). Make sure that the two hitch connection plates (#22, fig. 2) are angled upwards and the stock ends are pointed inwards after assembly.
10. Tighten all hardware.



Suggest:

For more complete manuals. Please go to the home page.

<https://www.ebooklibonline.com>

If the above button click is invalid. Please download this document first, and then click the above link to download the complete manual.

Thank you so much for reading

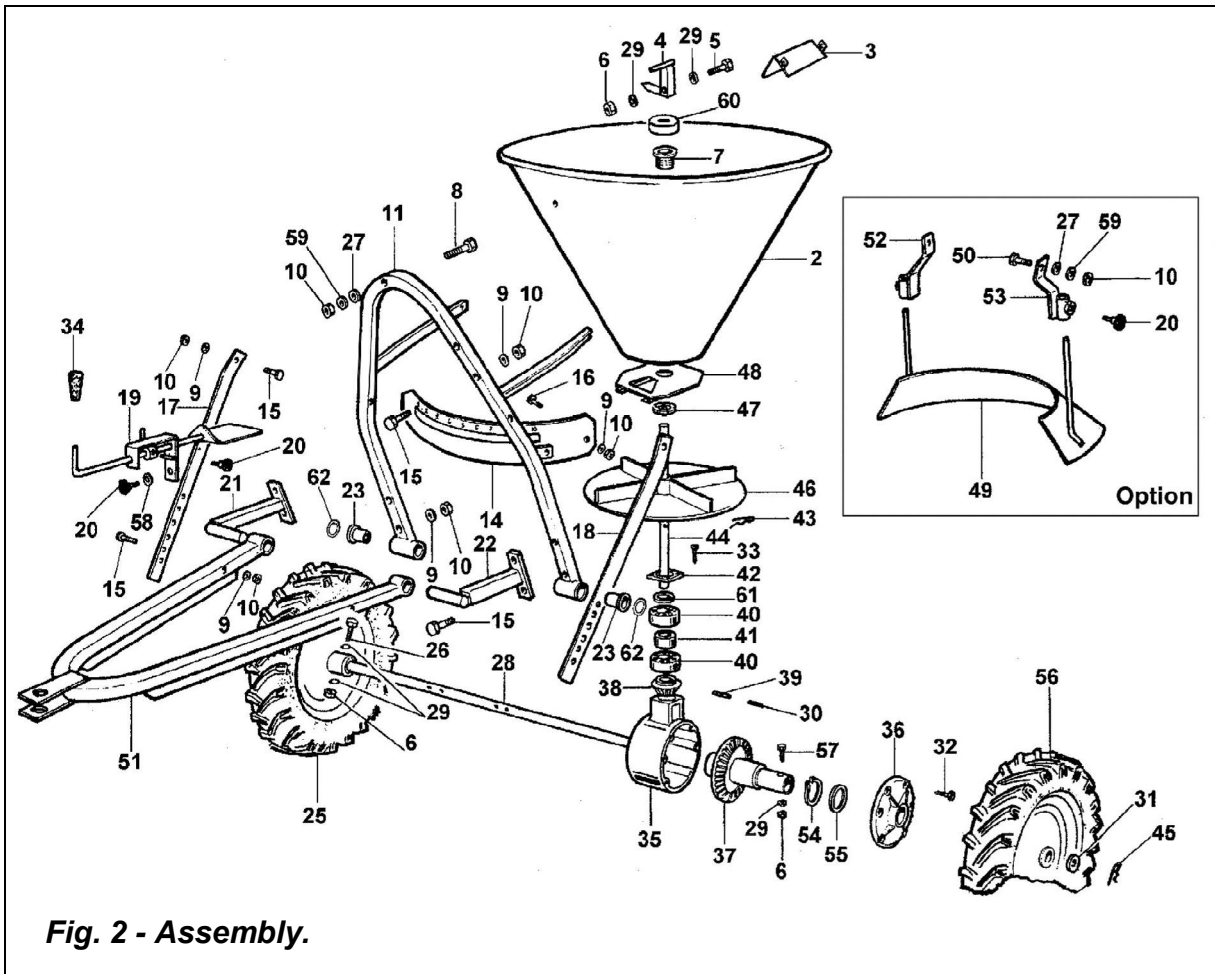


Fig. 2 - Assembly.

2 - SAFETY PRECAUTIONS

Safety is the primary concern in the design and manufacture of our products. Unfortunately our efforts to provide safe equipment can be wiped out by a single careless act of an operator.

In addition to the design and configuration of equipment, hazard control and accident prevention are dependent upon the awareness, concern, prudence and proper training of personnel involved in the operation, transport, maintenance and storage of equipment.

It is the operator's responsibility to read and understand all safety and operating instructions in the manual and to follow these.

Allow only properly trained personnel to operate the fertilizer spreader. Working with unfamiliar equipment can lead to careless injuries. Read this manual, and the manual for your tractor, before assembly or operation, to acquaint yourself with the machines. It is the spreader owner's responsibility, if this machine is used by any person other than yourself, is loaned or rented, to make certain that the operator, prior to operating, reads and understands the operator's manuals and is instructed in safe and proper use.

2.01 - Preparation



1. Before operating equipment read and understand the operator's manual and the safety signs (**see fig. 3**).
2. Thoroughly inspect the implement before initial operation to assure that all packaging materials, i.e., wires, bands, and tape have been removed.
3. Personal protection equipment including hard hat, safety glasses, safety shoes, and gloves are recommended during assembly, installation, operation, adjustment, maintaining and/or repairing the implement.
4. Operate the fertilizer spreader only with a tractor equipped with an approved Roll-Over-Protective-System (ROPS). Always wear your seat belt. Serious injury or even death could result from falling off the tractor.
5. Clear area of stones, branches or other debris that might be thrown, causing injury or damage.
6. Operate only in daylight or good artificial light.
7. Ensure fertilizer spreader is properly mounted, adjusted and in good operating condition.
8. Ensure that all safety shielding and safety signs are properly installed and in good condition.

<https://www.ebooklibonline.com>

Hello dear friend!

Thank you very much for reading.

Enter the link into your browser.

The full manual is available for immediate download.

<https://www.ebooklibonline.com>