

OPERATOR'S MANUAL

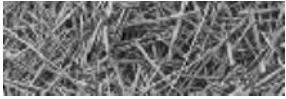
# NO-TILL GRAIN DRILL

**BD1307**



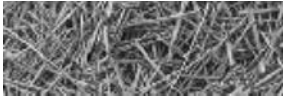
**FRONTIER**  
EQUIPMENT™

HB0500131 (12/3/08)



## TABLE OF CONTENTS

<b>Part 1: Operating Instructions .....</b>	<b>.....</b>
<b>Introduction .....</b>	<b>2</b>
<b>Purpose .....</b>	<b>2</b>
<b>Section 1: Safety .....</b>	<b>3</b>
1.1 Safety-alert symbols .....	3
1.2 Operator - personal equipment .....	5
1.3 Machine safety labels .....	6
1.4 Shielding .....	8
1.5 Personal equipment .....	8
1.6 Safety review .....	8
<b>Section 2: Dealer Preparation .....</b>	<b>12</b>
2.1 Drill Legume Box Attachment .....	12
2.2 Legume Hopper Shipping Kit (Optional) .....	14
<b>Section 3: Introduction .....</b>	<b>15</b>
3.1 Ordering Parts .....	15
3.2 Serial Number Decal .....	16
3.3 About your BD1307 Grain Drill .....	16
<b>Section 4: Operating Instructions .....</b>	<b>17</b>
4.1 Operating Instructions .....	17
4.2 Grain Drill Setup .....	18
4.3 Pressure Spring Adjustment .....	18
4.4 Press Wheel Adjustment .....	19
4.5 Frontier BD1307 Drill Opener .....	20
4.6 Feed Wheel Space Adjustment .....	21
4.7 Cleanout Slides .....	22
4.8 Calibration Pointer Adjustment .....	23
4.9 Setting and Checking Feed Rate .....	24
4.10 Checking Feed Rate .....	25
4.11 Drilling with the Grain Drill .....	31
4.12 Suggestions .....	32
4.13 Preparing for Storage .....	33
4.14 Removing from Storage .....	33
<b>Section 5: Grass Seeding Reference .....</b>	<b>34</b>
5.1 Grass Seeding Attachments .....	34
5.2 Legume Box Applications .....	35



## **TABLE OF CONTENTS**

5.3 Single Agitator Applications .....	35
5.4 Special Instructions for Warm Season Grasses .....	35
5.5 Pure Live Seed Calculations .....	36

### **Section 6: Lubrication ..... 38**

### **APPENDIX A: SPECIFICATIONS ..... 41**

### **Part 2: Parts Reference ..... 43**

MAIN FRAME ASSEMBLY .....	44
DRIVE ASSEMBLY .....	46
DRIVE WHEEL ASSEMBLY .....	48
TANK END DRIVE .....	50
RUN ASSEMBLY .....	52
TANK ASSEMBLY (DETAIL A) .....	54
TANK ASSEMBLY (DETAIL B) .....	56
TANK ASSEMBLY - BACK .....	58
SEED & FERTILIZER SETTING ASSEMBLY .....	60
SCRAPER ASSEMBLY .....	61
COULTER & DISK ASSEMBLY .....	62
PRESS WHEEL ASSEMBLY .....	63
HUB ASSEMBLY .....	64
HUB FORK ASSEMBLY .....	65
BALLAST BRACKET (OPTION) .....	66
HITCH .....	67
DRILL HYDRAULICS .....	67
SWIVEL HITCH .....	68
DECALS .....	70
DECAL LOCATIONS .....	72
LEGUME BOX OPTION .....	74
SEED INDEX ASSEMBLY LEGUME BOX (DETAIL C) .....	76
CUP ASSEMBLY LEGUME BOX (DETAIL D) .....	77
LEGUME DROP TUBE ASSEMBLY .....	78
LEGUME BOX MOUNTING BRACKET .....	80
ACRE COUNTER .....	81
LIGHT KIT & SLOW MOVING VEHICLE .....	82

### **NATIVE GRASS KIT**

Parts Reference & Installation Instructions .....	85
NATIVE GRASS KIT OPTION - ADDITIONAL AGITATOR SHAFTS .....	86

**<https://www.ebooklibonline.com>**

Hello dear friend!

Thank you very much for reading.

Enter the link into your browser.

The full manual is available for immediate download.

**<https://www.ebooklibonline.com>**

**<https://www.ebooklibonline.com>**

Hello dear friend!

Thank you very much for reading.

Enter the link into your browser.

The full manual is available for immediate download.

**<https://www.ebooklibonline.com>**



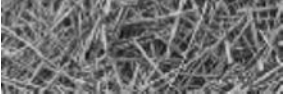
**Suggest:**

**For more complete manuals. Please go to the home page.**

**<https://www.ebooklibonline.com>**

**If the above button click is invalid. Please download this document first, and then click the above link to download the complete manual.**

**Thank you so much for reading**



## **TABLE OF CONTENTS**

NATIVE GRASS KIT - TANK END DRIVE ASSEMBLY .....	88
NATIVE GRASS KIT - SEED AND FERTILIZER SETTING ASSEMBLY .....	90
NATIVE GRASS KIT - DROP TUBE AND HOSE .....	91
NATIVE GRASS KIT FIELD INSTALLATION FOR SINGLE AND DOUBLE AGITATORS .....	92
INSTALLING FEED SHAFT AGITATOR KITS .....	92
CHAIN ROUTING .....	94
NATIVE GRASS KIT - SINGLE AGITATOR MASTER PARTS LIST .....	95
NATIVE GRASS KIT - DOUBLE AGITATOR MASTER PARTS LIST .....	96
NOTES .....	97

