

9920 COTTON PICKER



JOHN DEERE

OPERATORS MANUAL

9920
COTTON PICKER

OMN159577 C3 English

JOHN DEERE DES MOINES WORKS
OMN159577 C3

LITHO IN THE U.S.A.
ENGLISH



Contents

	Page
Safety	2
Operator's Station	8
Break-In	18
Prestarting Checks	21
Operating the Engine	23
Driving the Cotton Picker	28
Preparing the Cotton Picker	33
Operating the Cotton Picker	40
Transporting the Cotton Picker	57
Fuels and Lubricants	59
Lubrication and Maintenance	65
Trouble Shooting	78
Service	94
Storage	135
Specifications	140
Serial Numbers	145
Index	146

Safety

READ OPERATOR'S MANUAL

DO NOT operate machine without reading this operator's manual.



7A6/N35538 N01:7440 SAA 111182

OPERATE SAFELY

Do not operate picker with more than one person on the platform.

Do not start engine with gears or levers engaged.

Come to a complete stop before reversing direction.

Be sure area behind picker is clear before backing up.

Do not dump or lower basket or lid when someone is near picker.

Do not operate close to a ditch or creek.

Drive slowly over rough ground.

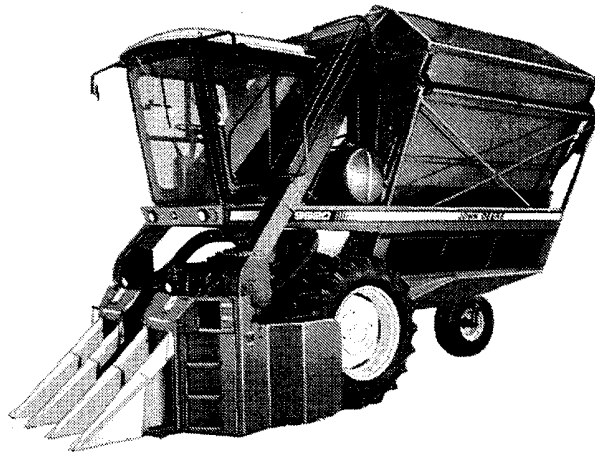
Do not dump on a slope or grade.

Do not dump near overhead wires.

Do not drive picker with basket raised.

Do not overload basket.

Slow down when turning.

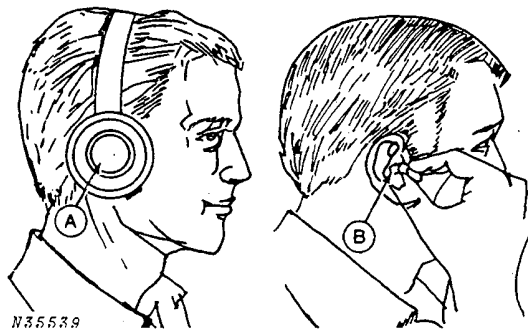


7A5/N36942 N01:9920 SAA 100283

PROTECT AGAINST NOISE

Prolonged exposure to loud noise can cause impairment or loss of hearing.

Wear a suitable hearing protective device such as earmuffs (A) or earplugs (B) to protect against objectionable or uncomfortable loud noises.



N35539

7A6/N35539 N01:7440 SAA 111182

<https://www.ebooklibonline.com>

Hello dear friend!

Thank you very much for reading.

Enter the link into your browser.

The full manual is available for immediate download.

<https://www.ebooklibonline.com>

AVOID FIRES AND EXPLOSIONS

Do not operate picker without two fire extinguishers near by. Fire extinguishers and brackets are available from your John Deere dealer. Mount one inside cab and one near engine.

To prevent plugging, engage fan before engaging picking units.

Do not attempt to extinguish a fire in the basket: dump the basket immediately.

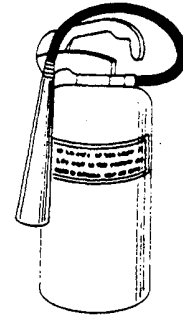
Do not dump basket near electrical wires.

Keep the engine area and units free from trash.

Do not refuel or add hydraulic oil with engine running.

Do not smoke or use lantern when refueling.

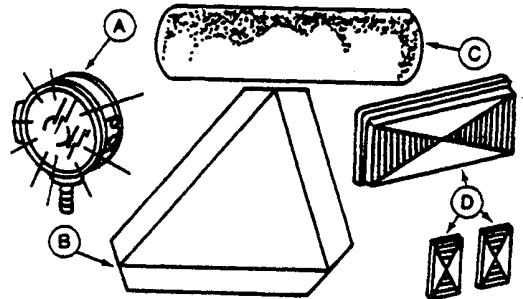
Batteries produce explosive gas. Avoid sparks when using battery charger or booster battery.



7A5/N35540 N01;9920 SAB 310182

USE SAFETY LIGHTS AND DEVICES

When transporting your machine on a road or highway at night or during the day, use necessary lights (A), SMV emblems (B), reflector tape (C) or reflectors (D), for adequate warning to operators of other vehicles. In this regard, check local governmental regulation. These various safety lights and devices are available from your John Deere dealer.



- A—Lights
- B—SMV Emblem
- C—Reflector Tape
- D—Reflectors

7A6/N36564 N01;7440 SAF 111182

Safety

TRANSPORT SAFELY

Know the height of your picker and beware of overhead wires and obstacles.

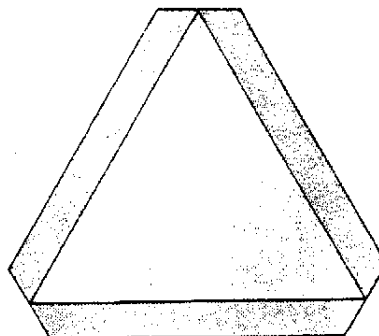
Remove or lower radio antenna, if equipped.

Latch brakes together.

Stop slowly to avoid "nose-diving."

Do not transport without first raising the picking units.

835338



7A5/H35338 N01,9920 SAC 310183

AVOID CONTACT WITH MOVING PARTS

Shut off engine and remove key before unplugging picker.

Keep hands, feet, and clothing away from moving parts.



7A5/N82334 K1 N01,9920 SAE 310183

PRACTICE SAFE MAINTENANCE

Do not oil or adjust picker when it is in motion.

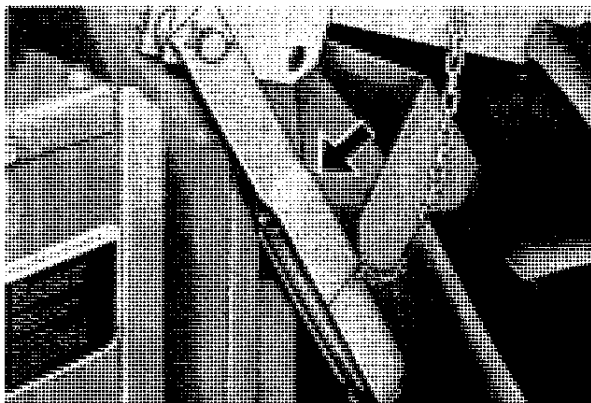
Before getting under picking units, raise units, shut off engine, set brakes, and set safety stops on both lift cylinder rods (bold arrow).

Do not loosen radiator cap on a hot radiator.

Shut off engine and remove key when working on picker unless specifically told to leave engine running.

Replace any guards or shields removed for servicing.

Unauthorized modification to the machine may impair the function and/or safety and affect machine life.



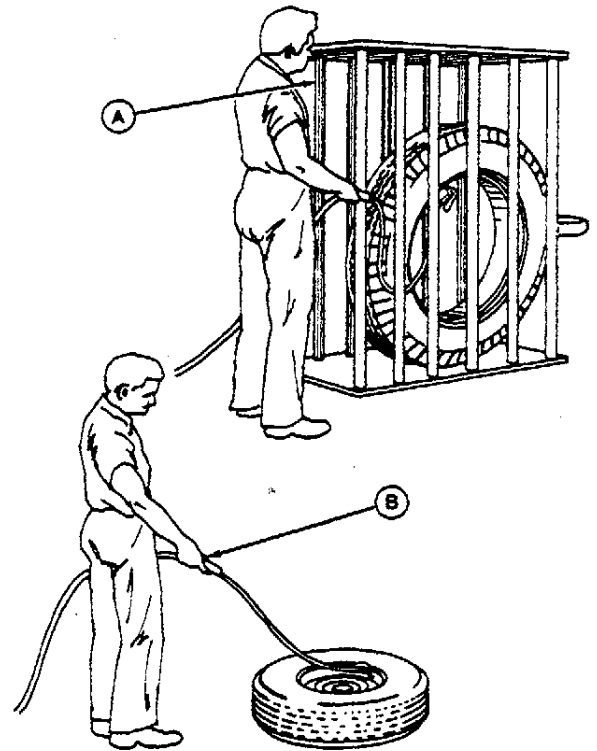
7A5/N78346 B1 N01,9920 SAE 310182

SERVICE TIRES SAFELY

Failure to follow proper procedures when mounting a tire on a wheel or rim can produce an explosion which may result in serious injury or death. Do not attempt to mount a tire unless you have the proper equipment and experience to perform the job. Have it done by your John Deere dealer or a qualified repair service.

When sealing tire beads on rims, never exceed 35 psi (240 kPa) (2.4 bar) or maximum inflation pressures specified by tire manufacturers for mounting tires. Inflation beyond this maximum pressure may break the bead, or even the rim, with dangerous explosive force. If both beads are not seated when the maximum recommended pressure is reached, deflate, reposition tire, relubricate bead, and reinflate.

Detailed tire mounting instructions, including necessary safety precautions, are contained in John Deere Fundamentals of Service (FOS) Manual 55. Tires and Tracks, available through your John Deere dealer. Such information is also available from the Rubber Manufacturers Association and from tire manufacturers.



- A—Use a safety cage if available.
- B—Do not stand over tire. Use a clip-on chuck and extension hose.

AVOID HIGH-PRESSURE FLUIDS

Escaping fluid under pressure can penetrate the skin causing serious injury. Relieve pressure before disconnecting hydraulic or other lines. Tighten all connections before applying pressure. Keep hands and body away from pinholes and nozzles which eject fluids under high pressure. Use a piece of cardboard or paper to search for leaks. Do not use your hand.

If ANY fluid is injected into the skin, it must be surgically removed within a few hours by a doctor familiar with this type of injury or gangrene may result.

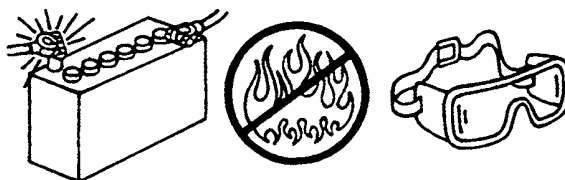


7A6;X9811 N01;7440 SAJ 111182

SERVICE BATTERY SAFELY

Failure to follow proper procedures when servicing a battery may produce an explosion which can result in serious injury or death. Do not attempt to service a battery unless you have the proper equipment and experience to perform the job. Have it done by your John Deere dealer or another qualified dealer. Detailed battery information, including necessary safety precautions are contained in John Deere Fundamentals of Service (FOS) Manual 20, Electrical Systems, available through your John Deere dealer.

Additional information is also available from battery and battery charger manufacturers.



7A6;H36842 N01;7440 SAK 040283

CAUTIONS, IMPORTANTS, NOTES

“CAUTIONS” are presented in bold type, and indicate there is a possibility of injury to you or other people.

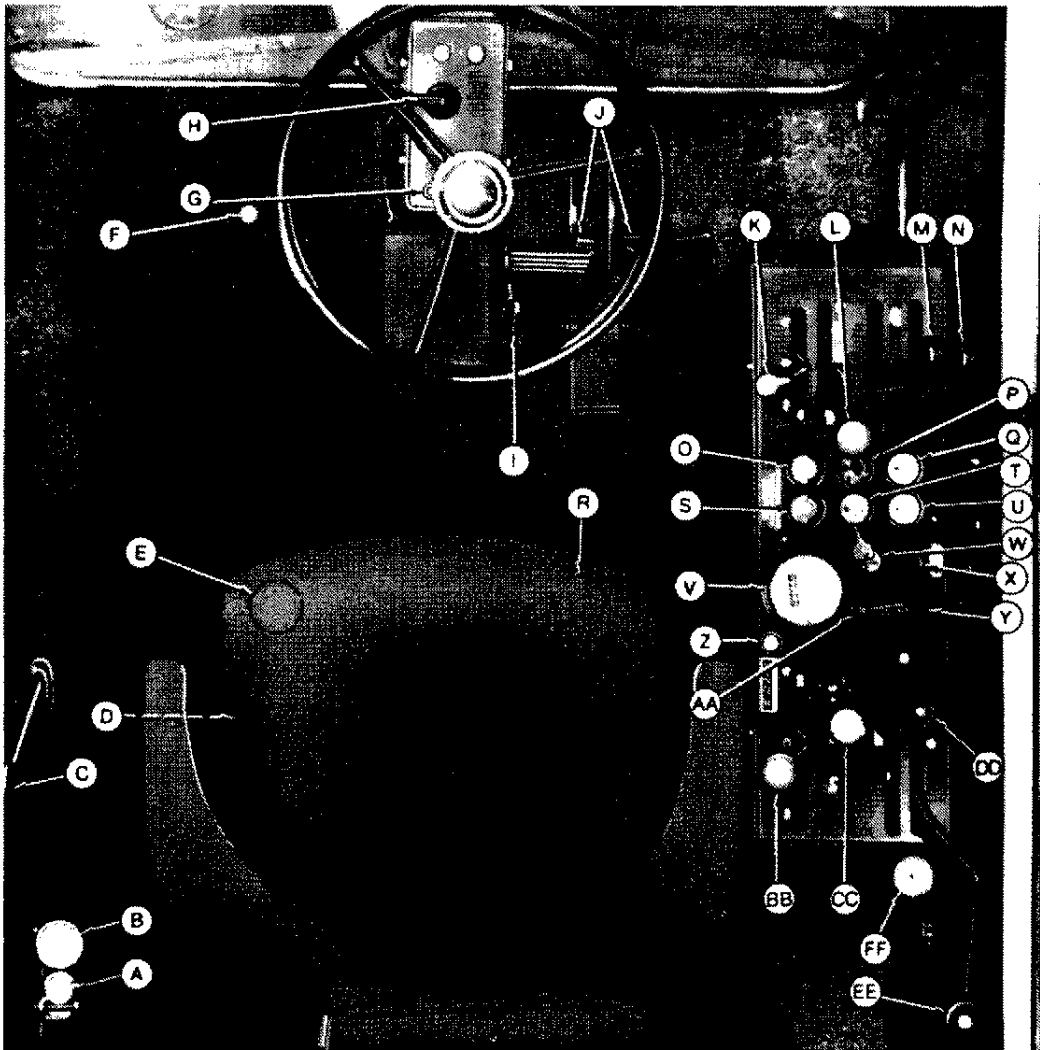
“IMPORTANTS” are also presented in bold type, and indicate there is a possibility of damage to the machine.

“NOTES” are separated from the text in italics. They provide additional information that is an exception to a previous statement or is not directly related to the original subject.

7A6; N01;7440 SAL 111382

Operator's Station

CONTROLS AND INSTRUMENTS

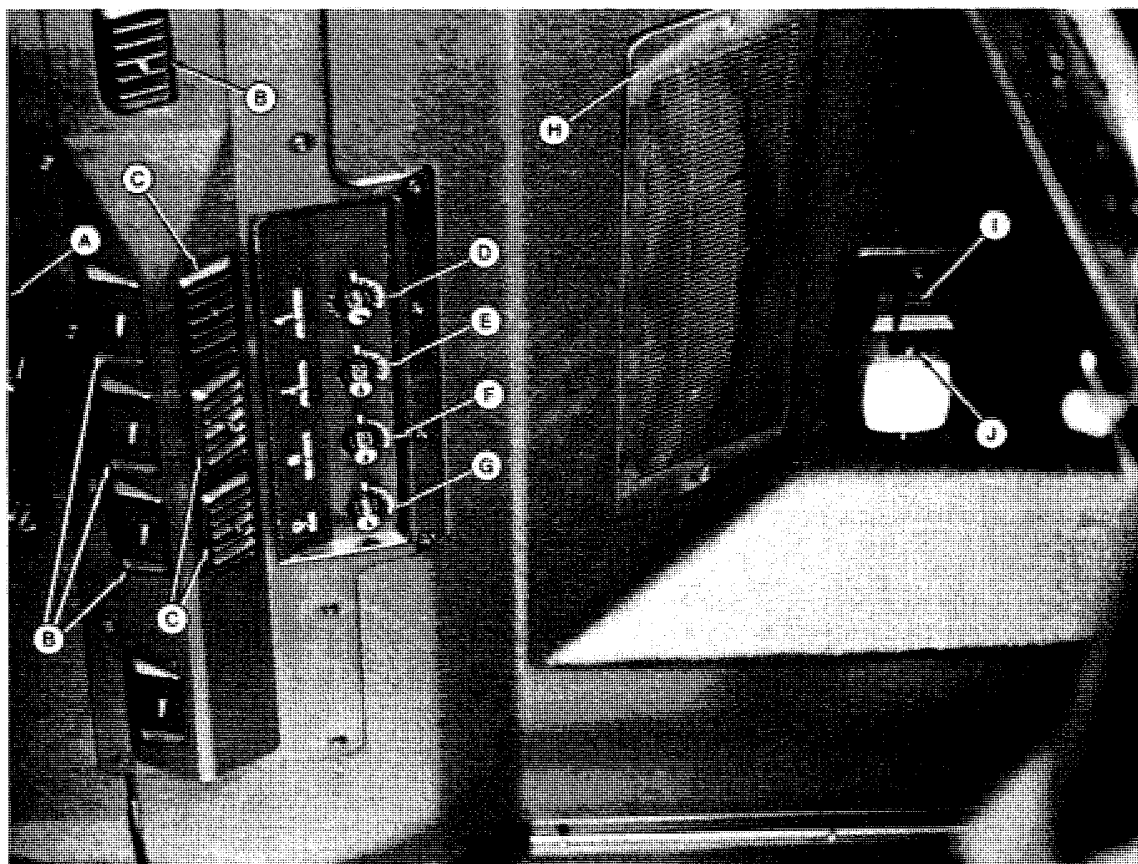


A—Water Pressure Regulator Handle
 B—Water Pressure Gauge
 C—Basket Dump and Compactor Control Lever
 D—Seat Controls (see Adjusting Seat Position and Ride)
 E—(Regular Unit Lift) L.H. Stop Control Knob
 F—Dimmer Switch
 G—Guide Wheel Indicator Lamp
 H—Turn Signal Controller
 I—Pedestal Tilt Control Pedal

J—Brake Pedals
 K—Throttle Lever
 L—Hydrostatic Transmission Speed Range Lever
 M—L.H. Unit Lift Lever
 N—R.H. Unit Lift Lever
 O—Hydraulic Oil Temperature
 P—Engine Oil Pressure
 Q—Fuel Gauge
 R—(Regular Unit Lift) R.H. Unit Stop Control Knob
 S—Air Filter Tel-light
 T—Battery Charge/Discharge
 U—Engine Water Temperature

V—Tachometer/Hour Meter
 W—Key Switch
 X—Flush Water System Control Knob
 Y—Light Switch
 Z—(Attachment) Ether Starting Aid Push Button
 AA—Hi-Beam Indicator Light
 BB—Hi-Lo Range Lever
 CC—Main Gearshift Lever
 DD—Picking Unit Engagement Lever
 EE—Fan Engagement Lever
 FF—Air Gauge

Operator's Station



A—Radio (Optional)
B—Defogging Louver
C—Louver
D—Air Conditioning Control
E—Heater Temperature Control

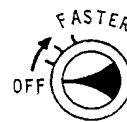
F—Blower Speed Control
G—Wiper Control
H—Air Filter
I—Console Lamp
K—Dome Light Switch

7A5/N82243 A1 N01:9920 OSB 310183

USING BLOWER



CAUTION: The air filter in the cab **WILL NOT** filter out harmful chemicals. When using or working with agricultural chemicals, follow the manufacturer's instructions.



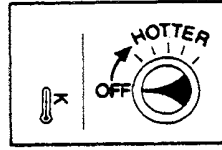
Operate blower with door and window closed.

7A6/N32059 N01:7440 OSA 111182

Operator's Station

USING HEATER

Control temperature with the heater and blower switch.

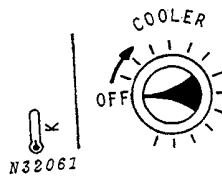


7A6;R31927 N01;7440 OSB 111182

USING AIR CONDITIONER

Blower switch must be turned on before air conditioning will operate.

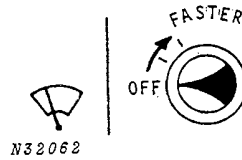
IMPORTANT: When outside temperature is below 100 degrees F (38°C), turn switch fully clockwise, then back 1/4 turn to avoid burning thermal fuse.



7A6;N32061 N01;7440 OSC 111182

USING WINDSHIELD WIPER

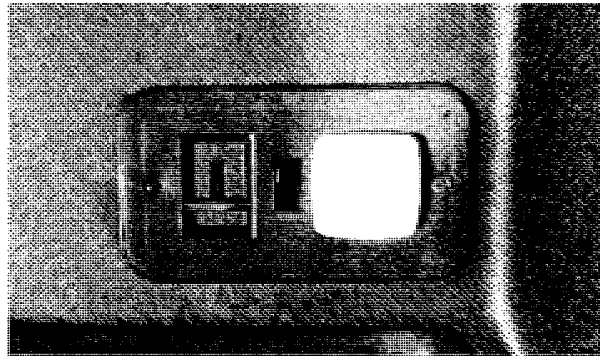
The wiper will return to its "Park" position when the switch is turned off.



7A6;N32062 N01;7440 OSE 111182

USING DOME LIGHT

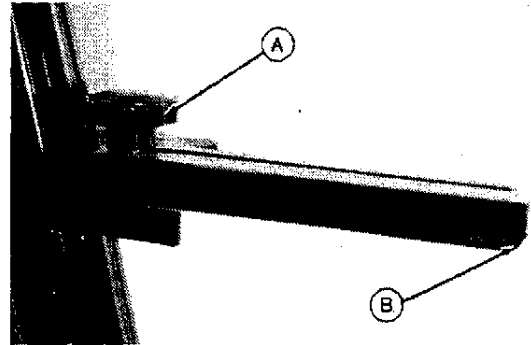
Rocker switch (A) operates dome light only if main key switch is turned on.



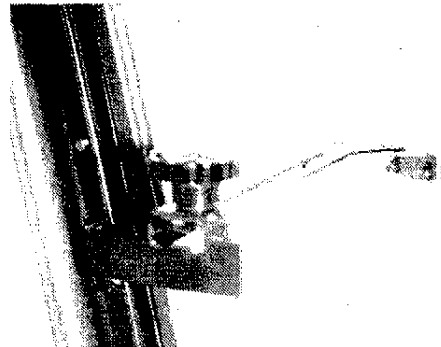
7A5;N82252 C2 N01;9920 OSC 310183

OPENING WINDOW

1. Loosen knob (A) by turning counterclockwise.
2. Grasp pivot arm (B) and swing away from window.
3. Push arm out and position window in desired position.
4. Retighten knob.



Closed

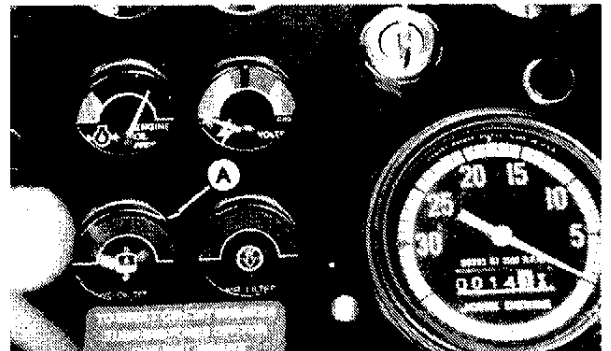


Open

7A6/N82246 P1, N82246 Q1 N01:7440 OSK 111182

HYDRAULIC OIL TEMPERATURE INDICATOR

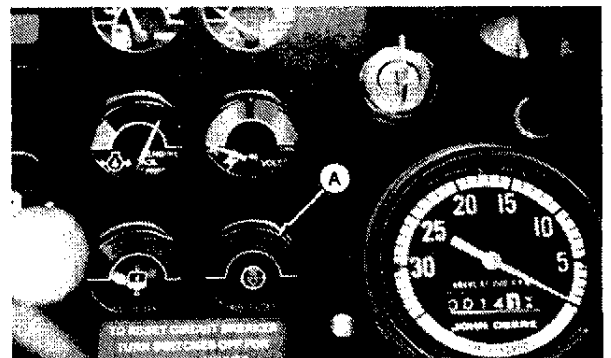
This red indicator (A) will light when the key switch is in the start position. If the hydraulic system overheats when the picker is operating, this indicator will light.



7A5/N82246 011 N01:9920 OSD 310183

AIR FILTER INDICATOR

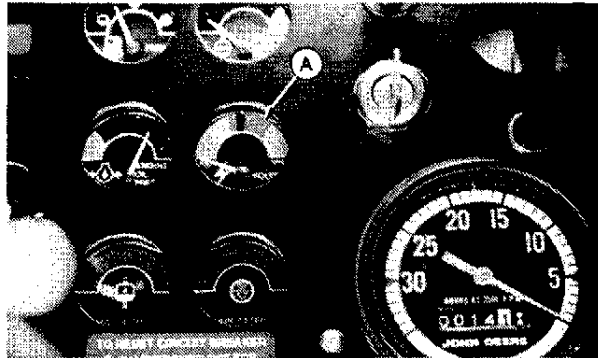
This amber indicator (A) will light when the key switch is in the start position. If the air filter needs to be replaced when the picker is operating, this indicator will light.



7A5/N82246 012 N01:9920 OSE 310183

VOLTMETER

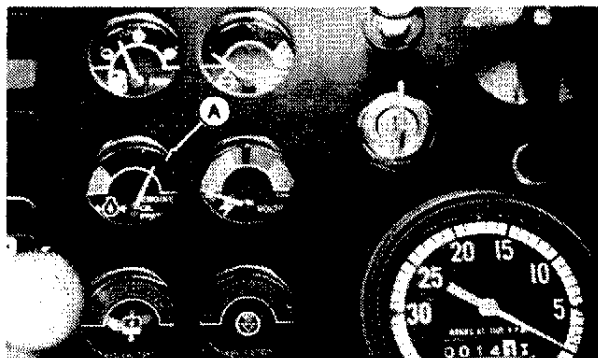
With key switch on and engine stopped, voltmeter (A) should reach left-hand green range. If it does not, batteries are undercharged. With engine running, it should rise to right-hand green range. If needle stays in either amber band, see your John Deere dealer.



7A5;N82246 013 N01;9920 05F 310183

ENGINE OIL PRESSURE GAUGE

The gauge hand (A) should rise above the warning zone within five seconds after the engine is started. If this does not happen, or if the gauge hand falls into the warning zone during operation, stop the engine immediately. Then determine the cause.

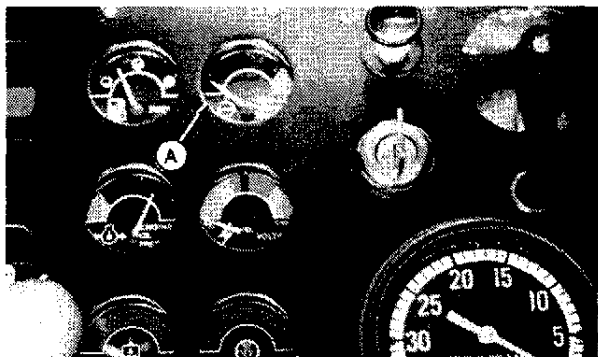


7A5;N82246 014 N01;9920 05G 310182

ENGINE COOLANT TEMPERATURE GAUGE

A few minutes after the engine is started, the gauge hand (A) should start to rise.

If the gauge hand should rise into the warning zone at any time, stop the engine immediately and determine the cause.



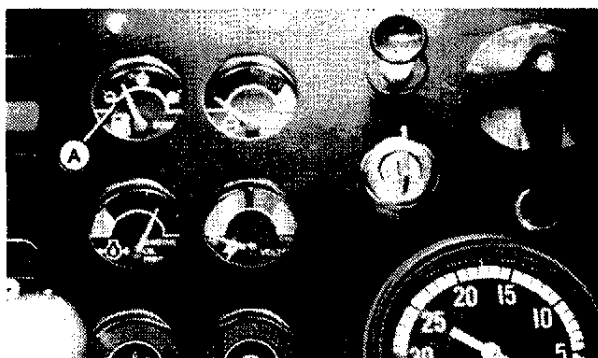
7A5;N82246 015 N01;9920 05H 310183

FUEL GAUGE

The gauge hand (A) registers the approximate level of fuel in the fuel tank.

Always stop to refuel before the gauge hand reaches the empty mark. Do not allow a diesel engine to run out of fuel.

(For diesel fuel specifications, see Fuels and Lubricants.)



7A5;N82246 016 N01;9920 05I 310183



Suggest:

For more complete manuals. Please go to the home page.

<https://www.ebooklibonline.com>

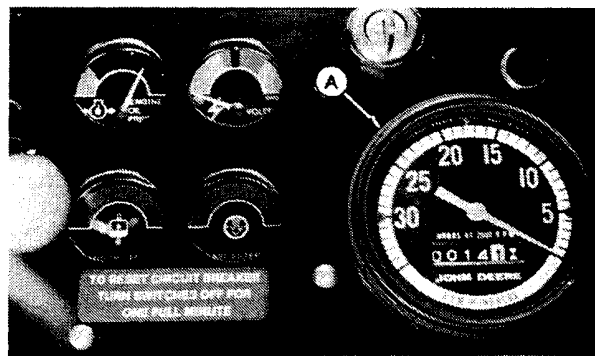
If the above button click is invalid. Please download this document first, and then click the above link to download the complete manual.

Thank you so much for reading

TACHOMETER/HOUR METER

The tachometer indicates engine speed in hundreds of revolutions per minute (rpm).

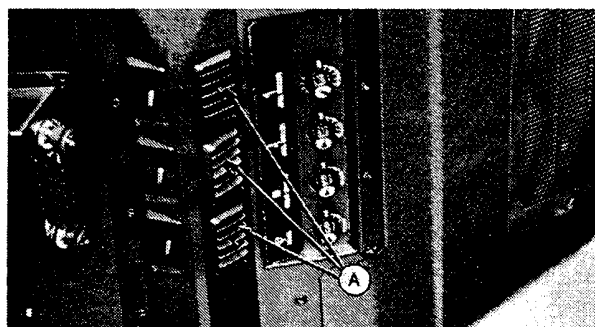
The hour meter indicates the time the engine has operated, based on an operating speed of 2500 rpm. Observe the hour meter to determine when service and lubrication is needed.



7A5;N82246 O17 N01;9920 OSJ 310183

ADJUSTING AIR OUTLETS

Adjust louvers (A) to direct air where needed, such as for defogging windows.



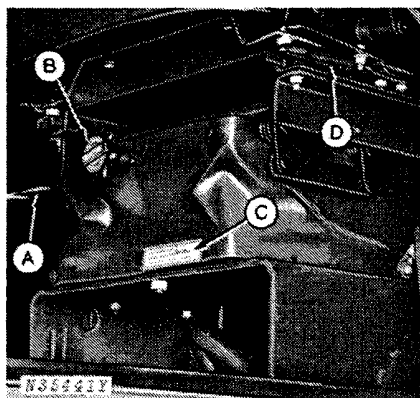
7A6;N82243 A2 N01;7440 OSD 111182

ADJUSTING SEAT POSITION AND RIDE

1. Push down lever (A) and move seat to desired height. Release lever.

2. Turn crank (B) clockwise for firm ride. Turn counterclockwise for softer ride. Handle flips out to crank. Sit and turn knob (B) until yellow indicator (C) inside tube is flush with tube.

3. Move the lever (D) outward to the left. Move the seat forward or rearward to desired position. Release lever.

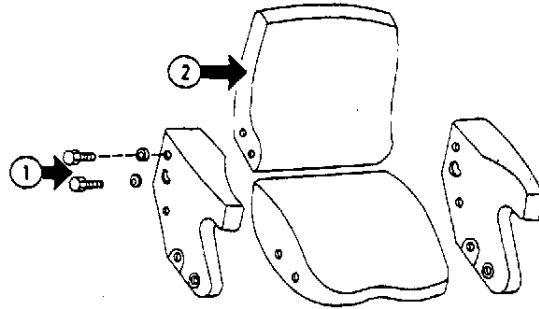


- A—Height Lever
- B—Weight Crank Knob
- C—Weight Indicator
- D—Forward and Rearward Lever

7A6;N35441 N01;7440 OSJ 111182

ADJUSTING SEAT BACKREST (STANDARD)

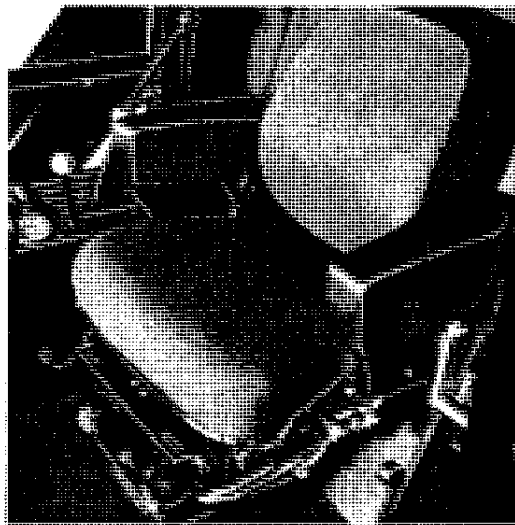
1. Loosen two cap screws on each side.
2. Move backrest to desired position.
3. Tighten cap screws.



7A6;T61076 N01;7440 05H 111182

CLEANING SEAT

Clean seat frequently with a soft brush or vacuum cleaner. Use solvent-type spot remover to clean oil or grease stains.

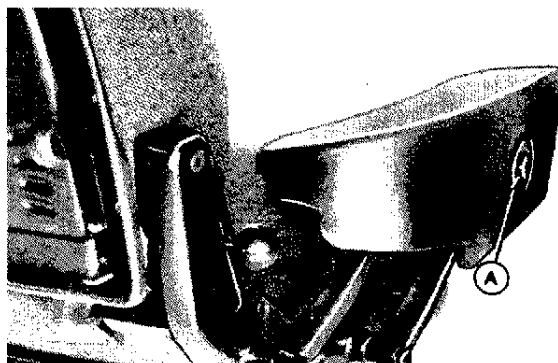


7A5;N36943 N01;9920 05K 100283

ADJUSTING HEIGHT OF PERSONAL POSTURE™ ARMREST

IMPORTANT: Do not sit on armrest except in its fully lowered position.

1. Press button (A) and move armrest to desired position.
2. Release button.



7A6;RW4256 N01;7440 05J 111182

<https://www.ebooklibonline.com>

Hello dear friend!

Thank you very much for reading.

Enter the link into your browser.

The full manual is available for immediate download.

<https://www.ebooklibonline.com>