

**1418**  
**Rotary Cutter**  
(7501- )

**John Deere Welland Works**

**OMW40684 Issue J1**

**(Mark old manual OMW38938 Issue D8 for  
machines up to Serial No. ( -7500))**

LITHO IN U.S.A.  
ENGLISH

# Contents

Page	Page
<b>Safety</b> . . . . .	05-1
<b>Safety Signs</b> . . . . .	10-1
<b>Preparing The Tractor</b>	
Matching PTO Speed . . . . .	15-1
Matching PTO Driveline And PTO Shaft . . . . .	15-1
Using Front Ballast . . . . .	15-1
Selecting Tractor For Integral Cutter . . . . .	15-2
Positioning Drawbar . . . . .	15-2
Adjusting Rate Of Drop . . . . .	15-3
Adjusting Hitch Sway Controls . . . . .	15-3
Setting Lateral Float . . . . .	15-3
Selecting Tractor For Pull-Type Cutter . . . . .	15-3
Positioning Drawbar . . . . .	15-4
Removing Quick-Coupler . . . . .	15-4
Setting Tractor Wheel Tread . . . . .	15-4
<b>Preparing The Cutter</b>	
Inspecting Blades And Blade Holder . . . . .	20-1
Inspecting Gear Case . . . . .	20-1
Checking Tires . . . . .	20-2
Lubricating Machine . . . . .	20-2
Adjusting The Clutch . . . . .	20-3
Preparing Category 2, 3-Point Hitch . . . . .	20-3
Preparing Category 3, 3-Point Hitch . . . . .	20-4
Preparing Category 3N, 3-Point Hitch . . . . .	20-4
Preparing Category 2, Quick-Coupler . . . . .	20-5
Preparing Category 3 And 3N, Quick-Coupler . . . . .	20-5
Check Driveline Length Integral Cutter . . . . .	20-6
Hydraulic Cylinder Requirement . . . . .	20-6
Tightening Wheel And Wheel Support Hardware . . . . .	20-6
Tightening Blade Hardware . . . . .	20-7
<b>Controls</b> . . . . .	25-1
	<b>Continued on next page</b>
<b>Attaching The Cutter</b>	
Matching PTO Driveline and Tractor PTO . . . . .	30-1
Attaching Driveline . . . . .	30-1
Attaching Without Quick-Coupler . . . . .	30-2
Attaching With Quick-Coupler . . . . .	30-3
Driveline/Cutter Interference . . . . .	30-4
Leveling The Machine . . . . .	30-4
Attaching Pull-Type Cutter . . . . .	30-5
Connecting Warning Lights . . . . .	30-6
<b>Detaching The Cutter</b>	
Detaching Driveline . . . . .	35-1
Disconnecting Warning Lights . . . . .	35-1
Detaching From 3-Point Hitch . . . . .	35-2
Detaching From Quick-Coupler . . . . .	35-3
Detaching Pull-Type Cutter . . . . .	35-4
<b>Transporting</b> . . . . .	40-1
<b>Operating The Cutter</b>	
Operating Safely . . . . .	45-1
Using Safety Shields . . . . .	45-2
Keeping Cutter Clean . . . . .	45-2
Cutting Applications . . . . .	45-3
Using Correct PTO Speed . . . . .	45-3
Using Correct Blades . . . . .	45-3
Removing Baffle . . . . .	45-3
Checking The Slip Clutch . . . . .	45-4
Turning Integral Cutter . . . . .	45-4
Turning Pull-Type Cutter . . . . .	45-4
Maintaining Cutter Angle . . . . .	45-5
Adjusting Cutting Height, Integral Cutter . . . . .	45-5
Adjusting Cutting Height, Pull-Type Cutter . . . . .	45-7
<b>Attachments</b>	
Front Rubber Safety Shield . . . . .	50-1
Cotton Row Shields . . . . .	50-2
Rear Solid Safety Shields . . . . .	50-2
Tires Pull-Type Cutter . . . . .	50-3
Wheel Supports Pull-Type Cutter . . . . .	50-3

*All information, illustrations and specifications in this manual are based on the latest information available at the time of publication. The right is reserved to make changes at any time without notice.*

OMW40684 J1-19-20SEP91

COPYRIGHT© 1991  
DEERE & COMPANY  
Moline, Illinois  
All rights reserved  
A John Deere ILLUSTRATION™ Manual

Contents

	<b>Page</b>		<b>Page</b>
Wheel Supports Integral Cutter . . . . .	50-4	Replacing Flat Blades . . . . .	65-18
Using Correct Blades . . . . .	50-4	Replacing Suction Blades . . . . .	65-18
Jack Pull-Type Cutter . . . . .	50-4	Installing Single Blades	
Pan For Blade Holder . . . . .	50-6	Blade Holder With Pan . . . . .	65-19
Warning Lights . . . . .	50-6	Straight Blade Holder Without Pan . . . . .	65-19
<b>Lubrication And Maintenance</b>		Installing Dual Blades . . . . .	65-19
Lubricating Safely . . . . .	55-1	Replacing Blades . . . . .	65-20
Observing Intervals . . . . .	55-1	Removing Blade Holder . . . . .	65-21
Alternative Lubricants . . . . .	55-2	Installing Blade Holder . . . . .	65-22
Selecting Grease . . . . .	55-2	Timing Blade Holders . . . . .	65-23
Selecting Gear Case Oil . . . . .	55-3	Shear Bolt Torque Limiter Components . . . . .	65-23
Checking Gear Case Oil Level . . . . .	55-3	Checking Shear Bolt Torque Limiter . . . . .	65-24
Lubricating CV Driveline . . . . .	55-4	Removing Shear Bolt Torque Limiter . . . . .	65-24
Lubricating Conventional Pull-Type		Replacing Shear Bolt Torque Limiter . . . . .	65-24
Driveline . . . . .	55-6	Timing Blade Holders . . . . .	65-25
Lubricating Conventional Integral Driveline . . . . .	55-7	Replacing Skid Shoes . . . . .	65-25
Lubricating Integral Axles And Wheels . . . . .	55-8	<b>Storage</b> . . . . .	70-1
Lubricating Pull-Type Wheels . . . . .	55-8	<b>Crime Prevention</b> . . . . .	75-1
Tightening Blade Hardware . . . . .	55-9	<b>Assembly</b> . . . . .	80-1
Tightening Blade Holder Hardware . . . . .	55-10	<b>Specifications</b> . . . . .	85-1
Checking Gear Case Hardware . . . . .	55-11	<b>Index</b>	
<b>Troubleshooting</b>			
Blades . . . . .	60-1		
Blade Holder . . . . .	60-1		
Clutch . . . . .	60-2		
Gear Case . . . . .	60-2		
Driveline . . . . .	60-3		
General . . . . .	60-4		
Operating . . . . .	60-5		
<b>Service</b>			
Servicing Safely . . . . .	65-1		
High Pressure Fluids . . . . .	65-1		
Servicing Tires . . . . .	65-2		
Checking Bolt Torque . . . . .	65-3		
Driveline Lengths Pull-Type Cutter . . . . .	65-5		
Driveline Lengths Integral Cutter . . . . .	65-6		
Shortening Driveline . . . . .	65-6		
Disassembly and Assembly of Drivelines			
Integral and Conventional . . . . .	65-8		
Constant Velocity . . . . .	65-10		
Adjusting Slip Clutch . . . . .	65-12		
Clutch Components . . . . .	65-13		
Disassemble Clutch . . . . .	65-14		
Assemble Clutch . . . . .	65-15		
Removing Gear Case . . . . .	65-17		
Inspecting Blades . . . . .	65-17		
Removing Blades . . . . .	65-18		

**<https://www.ebooklibonline.com>**

Hello dear friend!

Thank you very much for reading.

Enter the link into your browser.

The full manual is available for immediate download.

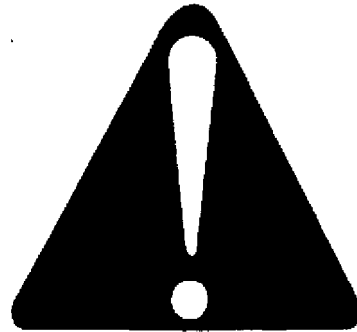
**<https://www.ebooklibonline.com>**

# Safety

## RECOGNIZE SAFETY INFORMATION

This is the safety-alert symbol. When you see this symbol on your machine or in this manual, be alert to the potential for personal injury.

Follow recommended precautions and safe operating practices.



DX,ALERT -19-04JUN90

T81389 -UN-07DEC68

## UNDERSTAND SIGNAL WORDS

A signal word—DANGER, WARNING, or CAUTION—is used with the safety-alert symbol. DANGER identifies the most serious hazards.

DANGER or WARNING safety signs are located near specific hazards. General precautions are listed on CAUTION safety signs. CAUTION also calls attention to safety messages in this manual.



DX,SIGNAL -19-04JUN90

TS187 -19-30SEP88

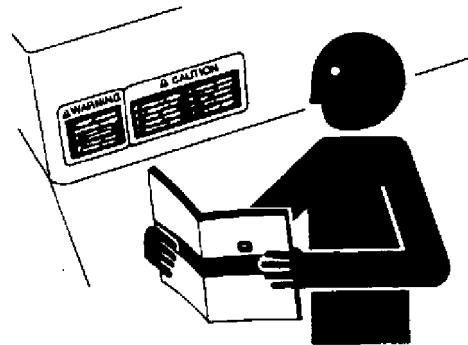
## FOLLOW SAFETY INSTRUCTIONS

Carefully read all safety messages in this manual and on your machine safety signs. Keep safety signs in good condition. Replace missing or damaged safety signs. Be sure new equipment components and repair parts include the current safety signs. Replacement safety signs are available from your John Deere dealer.

Learn how to operate the machine and how to use controls properly. Do not let anyone operate without instruction.

Keep your machine in proper working condition. Unauthorized modifications to the machine may impair the function and/or safety and affect machine life.

If you do not understand any part of this manual and need assistance, contact your John Deere dealer.



DX,READ -19-04JUN90

TS201 -UN-23AUG88



## CHECK BEFORE OPERATING

Check condition of hydraulic hoses and connections.

Become familiar with all controls.

Check hardware and machine condition.

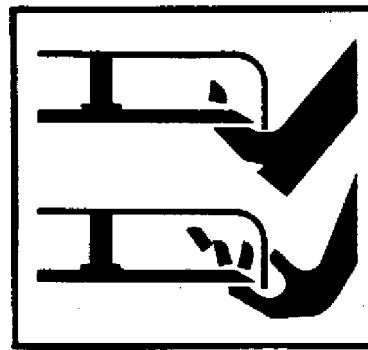
Remove foreign objects from machine.

Be sure no one is near machine or tractor.

WX,3SY,D -19-12JAN88

## STAY CLEAR OF ROTATING BLADES

Rotating blades can cut or dismember, causing personal injury or death. Keep hands and feet from under cutter deck.



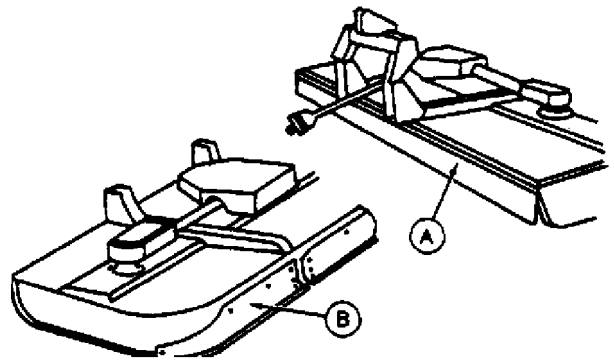
W14334 -UN-07OCT88

WX,09SY,H -19-16APR90

## USE FRONT AND REAR SAFETY SHIELDS

Use both front and rear safety shields to reduce the possibility of objects being thrown by the blades.

Adjustable rear shields should be kept in lowest possible position.



W11167 -UN-09MAY89

WX,1018SY,1 -19-01MAY91

## PROTECT BYSTANDERS

Never operate the cutter near people. Do not stand near the cutter while blades are in motion. Debris can be thrown hundreds of feet.

DO NOT allow children to operate tractor or cutter.

Operate the cutter from tractor seat only.



W14335 -UN-07OCT88

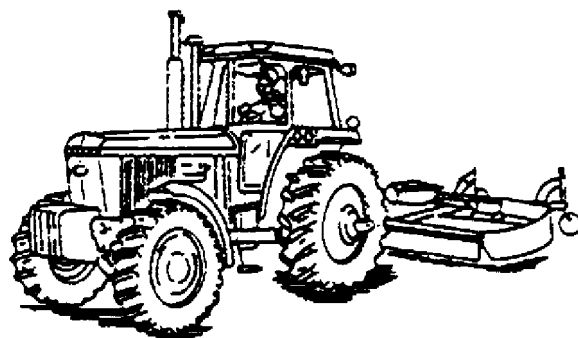
WX,3SY,F -19-12JAN88



## OPERATE TRACTOR AND CUTTER SAFELY

All rotary cutters are potentially dangerous machines. This rotary cutter has been designed to minimize the chance of accidents but there is no substitute for a careful operator.

Flywheel effect of blade holder will drive tractors with transmission drive PTO's forward, even when tractor clutch is disengaged. Travel slowly near ditches, trees, or large objects. To stop, slow engine speed and apply brakes before disengaging clutch.



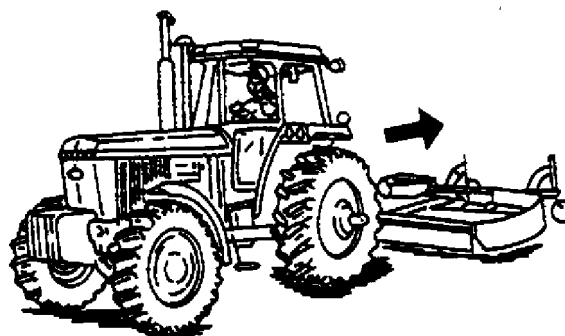
WX,1018SY,2 -19-01MAY91  
W11366 -UN-07OCT88

WX,1018SY,2 -19-01MAY91

## BACK UP SAFELY

Do not operate the cutter in reverse unless necessary. First, look carefully behind the cutter.

Be very careful when you back the tractor with the PTO engaged. Material can be discharged from the front of the cutter. This increases risk of injury to the operator from thrown objects.

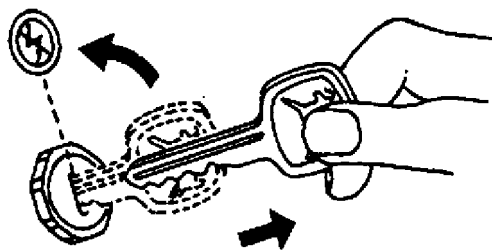


WX,1018SY,3 -19-01MAY91  
W11166 -UN-07OCT88

WX,1018SY,3 -19-01MAY91

## LEAVING CUTTER UNATTENDED

Lower the cutter to the ground, disengage PTO, engage parking brake or place transmission in "PARK", shut off tractor, and remove key.



WX,3SY,I -19-12JAN88  
W09765 -UN-24JAN89

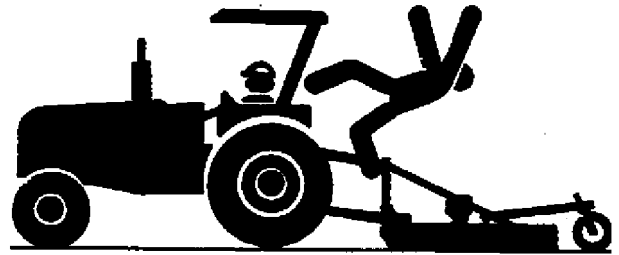
WX,3SY,I -19-12JAN88



## KEEP RIDERS OFF MACHINE

KEEP RIDERS OFF.

Riders on machine are subject to injury such as being struck by foreign objects and being thrown off the machine. Riders also obstruct the operator's view resulting in the machine being operated in an unsafe manner.



W14591 -UN-05OCT88

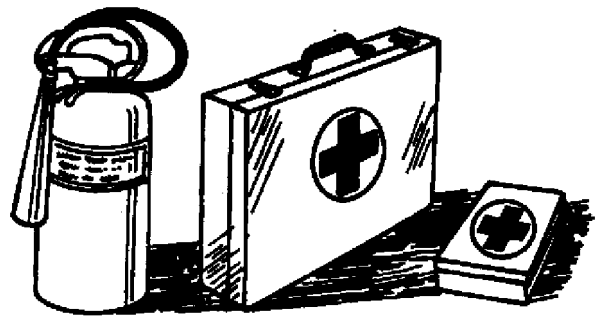
WX,1018SY,5 -19-07MAY91

## PREPARE FOR EMERGENCIES

Be prepared if a fire starts.

Keep a first aid kit and fire extinguisher handy.

Keep emergency numbers for doctors, ambulance service, hospital, and fire department near your telephone.



TS291 -UN-23AUG88

DX,FIRE2 -19-04JUN90

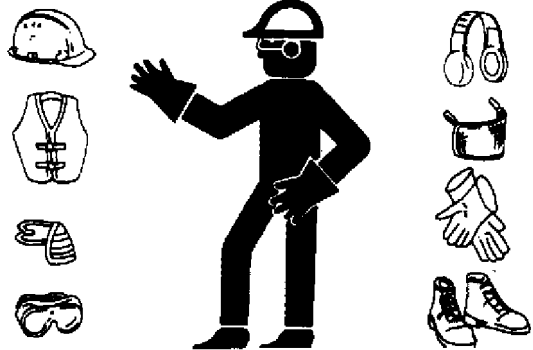
## WEAR PROTECTIVE CLOTHING

Wear close fitting clothing and safety equipment appropriate to the job.

Prolonged exposure to loud noise can cause impairment or loss of hearing.

Wear a suitable hearing protective device such as earmuffs or earplugs to protect against objectionable or uncomfortable loud noises.

Operating equipment safely requires the full attention of the operator. Do not wear radio or music headphones while operating machine.



TS206 -UN-23AUG88

DX,WEAR -19-10SEP90



## STAY CLEAR OF ROTATING DRIVELINES

Entanglement in rotating driveline can cause serious injury or death.

Keep tractor master shield and driveline shields in place at all times. Make sure rotating shields turn freely.

Wear close fitting clothing. Stop the engine and be sure PTO driveline is stopped before making adjustments, connections, or cleaning out PTO driven equipment.



DX,PTO -19-04JUN90

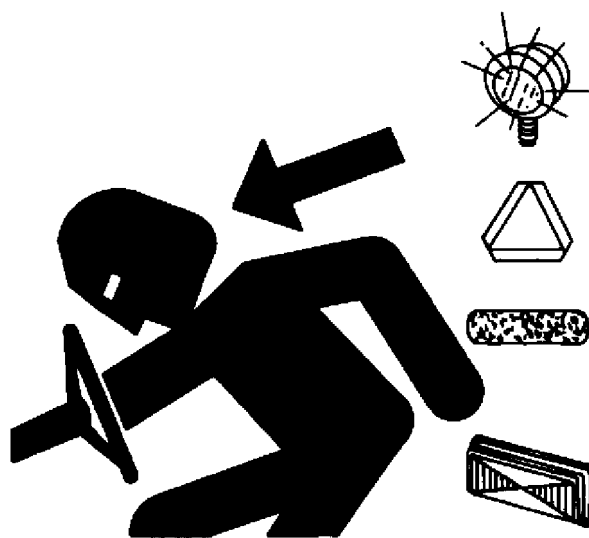
TS198  
-UN-23AUG88

## USE SAFETY LIGHTS AND DEVICES

Slow moving tractors, self-propelled equipment and towed implements or attachments can create a hazard when driven on public roads. They are difficult to see, especially at night. Avoid personal injury or death resulting from collision with a vehicle.

Flashing warning lights and turn signals are recommended whenever driving on public roads. To increase visibility, use the lights and devices provided with your machine. For some equipment, install extra flashing warning lights.

Keep safety items in good condition. Replace missing or damaged items. An implement safety lighting kit is available from your John Deere dealer.



DX,FLASH -19-04JUN90

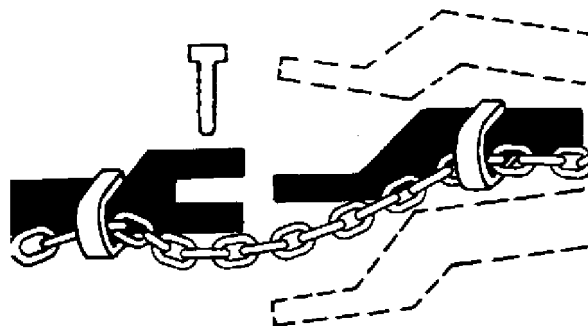
TS951  
-UN-12APR90

## USE A SAFETY CHAIN

A safety chain will help control drawn equipment should it accidentally separate from the drawbar.

Using the appropriate adapter parts, attach the chain to the tractor drawbar support or other specified anchor location. Provide only enough slack in the chain to permit turning.

See your John Deere dealer for a chain with a strength rating equal to or greater than the gross weight of the towed machine. Do not use safety chain for towing.



DX,CHAIN -19-04JUN90

TS217  
-UN-23AUG88



**Suggest:**

**For more complete manuals. Please go to the home page.**

**<https://www.ebooklibonline.com>**

**If the above button click is invalid. Please download this document first, and then click the above link to download the complete manual.**

**Thank you so much for reading**



## TRANSPORT SAFELY

Disengage PTO.

Slow moving vehicle (SMV) emblem and reflectors must be clean, in good condition and visible from the rear.

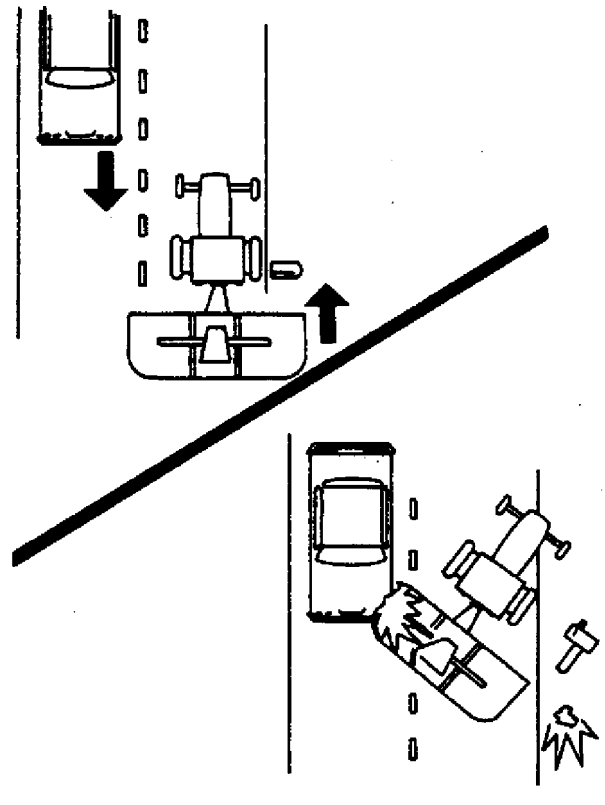
The cutter is 4.29 m (14 feet, 1 inch) wide. Beware of oncoming traffic and roadside obstructions.

Transport "INTEGRAL" cutter in fully raised position.

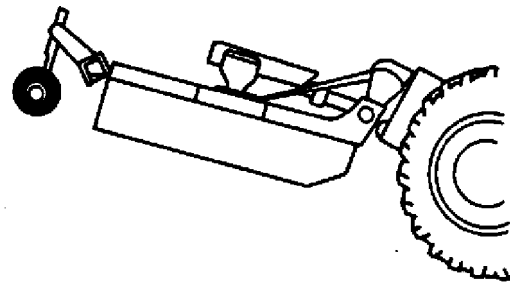
Transport "PULL-TYPE" cutter with transport link (A) engaged.

Place pin in hole toward front of bracket (as shown) for laminated tire or hole toward rear of machine for pneumatic tire.

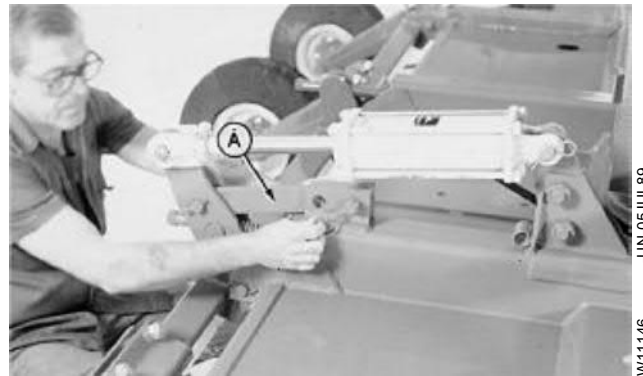
Travel slowly over rough terrain.



W14366 -UN-07OCT88



W15754 -UN-25APR91



W11146 -UN-05JUL89

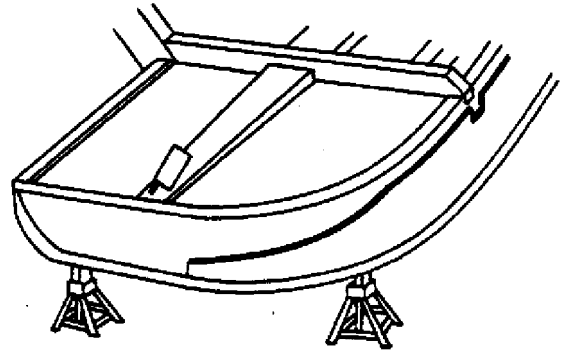
WX,1418SY,1 -19-19SEP91



## PRACTICE SAFE MAINTENANCE WHEN REPLACING BLADES AND BLADE HOLDER

The blades and blade holder may rotate for several minutes after PTO is shut off. Look and listen for rotating driveline to stop before working on the cutter.

When servicing blades or blade holder, it will be necessary to work underneath cutter. Be sure to support cutter frame with safety stands to prevent accidental lowering. Do not position safety stands under axle or wheel supports because these components can rotate.



W12803 -UN-16MAY89

WX,09SY,G -19-05APR90

## PRACTICE SAFE MAINTENANCE

Understand service procedure before doing work. Keep area clean and dry.

Never lubricate or service machine while it is moving. Keep hands, feet, and clothing from power-driven parts. Disengage all power and operate controls to relieve pressure. Lower equipment to the ground. Stop the engine. Remove the key. Allow machine to cool.

Securely support any machine elements that must be raised for service work.

Keep all parts in good condition and properly installed. Fix damage immediately. Replace worn or broken parts. Remove any buildup of grease, oil, or debris.

Disconnect battery ground cable (-) before making adjustments on electrical systems or welding on machine.



TS218 -UN-23AUG88

DX,SERV -19-04JUN90

**<https://www.ebooklibonline.com>**

Hello dear friend!

Thank you very much for reading.

Enter the link into your browser.

The full manual is available for immediate download.

**<https://www.ebooklibonline.com>**