

1060 Series Seeding Tool

John Deere Des Moines Works
OMN200340 Issue K2
(This manual replaces OMN200340 K1)

LITHO IN U.S.A.
ENGLISH

Introduction

READ THIS MANUAL carefully to learn how to operate and service your machine correctly. Failure to do so could result in personal injury or equipment damage.

THIS MANUAL SHOULD BE CONSIDERED a permanent part of your machine and should remain with the machine when you sell it.

RIGHT-HAND AND LEFT-HAND sides are determined by facing in the direction the implement will travel when going forward.

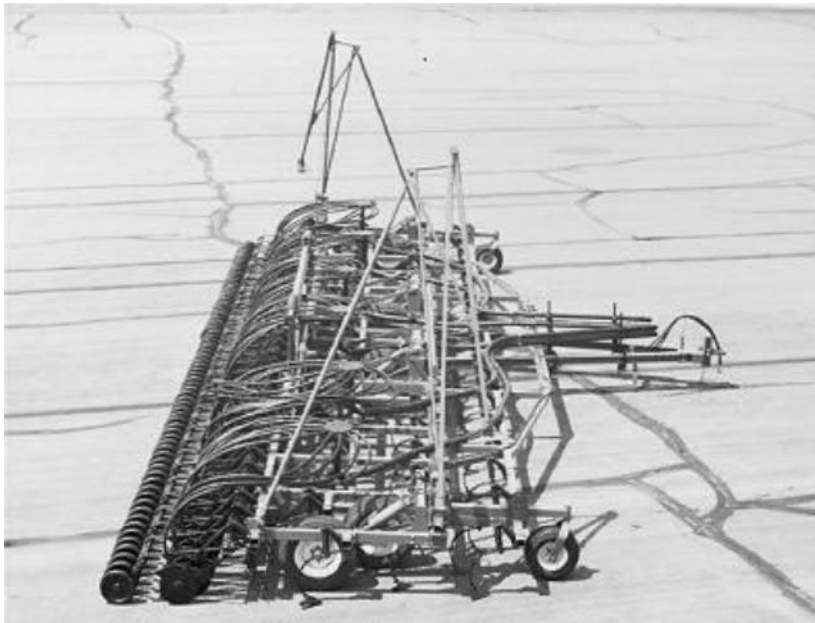
MEASUREMENTS in this manual are metric with the customary U.S. measurement following.

WRITE PRODUCT IDENTIFICATION NUMBERS in the space provided in the Specifications section. Accurately record all the numbers to help in tracing the machine should it be stolen. Your dealer also needs these numbers when you order parts. If this manual is kept on the machine, also file the identification numbers in a secure place off the machine.

WARRANTY is provided as part of John Deere's support program for customers who operate and maintain their equipment as described in this manual. The warranty is explained on the warranty certificate which you should have received from your dealer.

This warranty provides you the assurance that John Deere will back its products where defects appear within the warranty period. In some circumstances, John Deere also provides field improvements, often without charge to the customer, even if the product is out of warranty. Should the equipment be abused, or modified to change its performance beyond the original factory specifications, the warranty will become void and field improvements may be denied. Setting fuel delivery above specifications or otherwise overpowering machines will result in such action.

THE TIRE MANUFACTURER'S warranty supplied with your machine may not apply outside the U.S.



N88290XX
-JUN-11 JAN89

NX,200340,IFC -19-13AUG91

Contents

	Page		Page
Safety	05-1		
Preparing the Tractor			
Determining Tractor Requirements	10-1	Adjusting Sweep Pitch Angle	30-8
Preparing Hydraulic System	10-1	Adjusting Depth Control	30-8
Securing 3-Point Hitch	10-1	Leveling Wings	30-9
		Adjusting Harrow Down-Pressure	30-9
Preparing the Machine		Adjusting Gang Opener Down-Pressure	30-9
Checking Tire Pressure	15-1	Adjusting Individual Opener Down-Pressure	30-10
Wheel Bolts and Bearings	15-1	Operating Marker	30-10
		Adjusting Hydraulic Row Marker Attachment	30-10
Attaching and Detaching		Adjusting Lift Channel Gap L.H. Only	30-11
Hand Signals	20-1	Adjusting Lift Channel Gap R.H. Only	30-11
Attaching Seeding Tool To Air Seeder (Tow Between Cart)	20-2		
Attaching Machine to Tractor	20-4	Lubrication and Maintenance	
Depth Control Operation Check	20-7	Grease	35-1
Checking Fan Operation	20-8	Alternative Lubricants	35-2
Wing Fold Operation Check	20-9	Lubricate Hitch Jack	35-3
Storage Stand	20-10	Lubricate Press Wheel Pivots	35-3
Detaching From Tractor	20-11	Lubricate Caster Wheel	35-3
Detaching Seeding Tool From Air Seeder	20-13	Lubricate Marker Disks	35-3
		Lubricate Wheel Bearings	35-4
		Lubricate Opener Adjusting Cranks	35-4
Transporting			
Attaching Safety Chain to Tractor	25-1	Troubleshooting	40-1
Warning Lights	25-1		
Safe Transport Procedures	25-2	Service	
Positioning Hitch Jack For Transport	25-3	Safe Service Procedures	45-1
Raising Storage Stand	25-3	Replacing Ground Engaging Tools	45-1
Locking Up Depth Control	25-4	Metric Series Torque Chart	45-3
		Inch Series Torque Chart	45-4
Operating the Machine		Checking Wheel Bolts and Bearings	45-5
Safe Operating Procedures	30-1	Servicing Tires	45-5
Guidelines for Use	30-2	Tire Pressure	45-6
Tightening Hardware	30-3	Spacing Diagrams	
Operating Machine in Field	30-3	Depth Control Hydraulic Diagram	45-25
Stabilizer Wheel Adjustment	30-5	Wing Fold Hydraulic Diagram-7.5 m (24.5 ft) & 10 m (32.7 ft)	45-27
Hydraulic Depth Control System (Series)	30-6		
Finding Initial Tillage Depth	30-7		
Installing Sweep Extender	30-7		

Continued on next page

All information, illustrations and specifications in this manual are based on the latest information available at the time of publication. The right is reserved to make changes at any time without notice.

OMN200340 K2-19-30SEP92

COPYRIGHT© 1992
DEERE & COMPANY
Moline, Illinois
All rights reserved
A John Deere ILLUSTRATION™ Manual
Previous Editions
Copyright 1991 Deere & Company

<https://www.ebooklibonline.com>

Hello dear friend!

Thank you very much for reading.

Enter the link into your browser.

The full manual is available for immediate download.

<https://www.ebooklibonline.com>

Contents

	Page
Wing Fold Hydraulic Diagram-12.5 m (41 ft)	45-29
L.H. Marker Hydraulic Diagram	45-30
L.H. & R.H. Marker Hydraulic Diagram	45-31
Removing Hydraulic Cylinders	45-32
Wing Fold Cylinders	45-33
Bleeding Depth Control Cylinders	45-34
Depth Control Cylinder Leakage	45-35
Checking Standard Bushings	45-36
Replacing Split-Tension Bushings	45-36
Replacing Blades and Bearings	45-37
Replacing Inside Scrapers	45-38
Storage	50-1
Specifications	
Transport Width, Height and Weight	55-1
Opener Application Chart	55-1
Machine Specifications	55-2
Tractor Recommendations	55-3
Serial Number	55-4
Crime Prevention Tips	60-1
Index	

Safety

RECOGNIZE SAFETY INFORMATION

This is the safety-alert symbol. When you see this symbol on your machine or in this manual, be alert to the potential for personal injury.

Follow recommended precautions and safe operating practices.



DX,ALERT -19-04JUN90

T81389 -UN-07DEC68

UNDERSTAND SIGNAL WORDS

A signal word—DANGER, WARNING, or CAUTION—is used with the safety-alert symbol. DANGER identifies the most serious hazards.

DANGER or WARNING safety signs are located near specific hazards. General precautions are listed on CAUTION safety signs. CAUTION also calls attention to safety messages in this manual.



DX,SIGNAL -19-09JAN92

TS187 -19-30SEP88

FOLLOW SAFETY INSTRUCTIONS

Carefully read all safety messages in this manual and on your machine safety signs. Keep safety signs in good condition. Replace missing or damaged safety signs. Be sure new equipment components and repair parts include the current safety signs. Replacement safety signs are available from your John Deere dealer.

Learn how to operate the machine and how to use controls properly. Do not let anyone operate without instruction.

Keep your machine in proper working condition. Unauthorized modifications to the machine may impair the function and/or safety and affect machine life.

If you do not understand any part of this manual and need assistance, contact your John Deere dealer.



DX,READ -19-04JUN90

TS201 -UN-23AUG88



OPERATE SEEDING TOOL SAFELY

Clear area around machine before raising or lowering machine, wings or markers.

Stop tractor on level ground when raising or lowering wings.

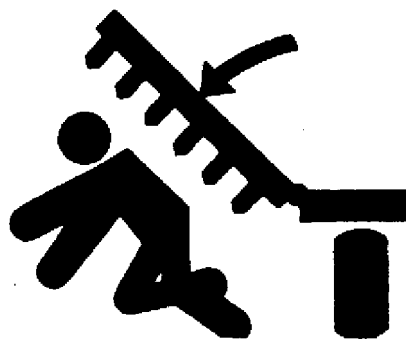
Operate seeding tool from the tractor seat only.

Do not operate with wings raised.

Do not operate close to a ditch or creek.

Slow down when turning or traveling over rough ground.

Shut off tractor and shift to "Park" or set brakes when leaving tractor. Remove key when leaving tractor unattended.



N39547 -UN-06OCT88

NX,1060SO,C4 -19-13DEC88

STAY CLEAR OF AIR HOSES

Stay clear of hoses when air seeder fan is running. Seed or fertilizer blowing out at high speed can cause blindness and other personal injuries.

Never attempt to clear blockage from air hoses or seeding openers while fan is running.



TS265 -UN-23AUG88

NX,1060SO,C5 -19-13DEC88



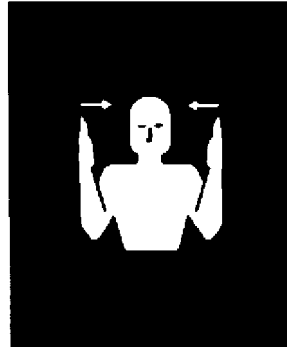
USE A SIGNAL PERSON

Use a signal person to direct movement of the tractor/seed cart/seeding tool combination, whenever the tractor operator's view is obstructed.

Designate one individual as THE signal person. Always have signal person stand in clear view. Be sure signal person stays a safe distance away from the machine when it is moving.

Prior to starting the tractor, discuss hand signals and what each signal means to avoid misunderstandings and confusion which could result in a serious injury or fatal accident for someone.

Keep all bystanders away whenever the machine is moved.



N43984 -UN-11DEC91

NX,787C,A2 -19-18DEC91



PARK SEEDING TOOL SAFELY

Park seeding tool on a level surface and block wheels.

Secure hitch jack in storage position with pin.

Lower rear storage stands (A) (if equipped) to ground and secure with pin and spring-locking pin.



Hitch Jack



7.5 and 10 M (24.5 and 32.7 Ft)



12.5 M (41 Ft) Machine

NX,1060SO,C6A -19-13AUG91

KEEP RIDERS OFF MACHINE

Keep riders off.

Riders are subject to injury such as being struck by foreign objects and being thrown off the machine. Riders also obstruct the operator's view resulting in the machine being operated in an unsafe manner.



1N4,610C,A2 -19-21JUN88

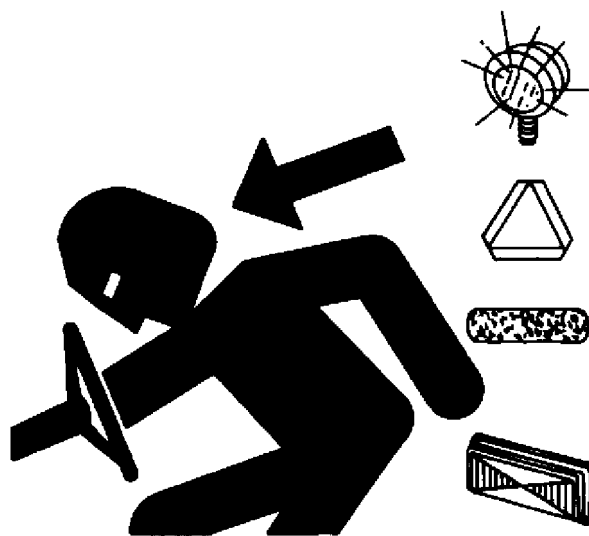


USE SAFETY LIGHTS AND DEVICES

Slow moving tractors, self-propelled equipment and towed implements or attachments can create a hazard when driven on public roads. They are difficult to see, especially at night. Avoid personal injury or death resulting from collision with a vehicle.

Flashing warning lights and turn signals are recommended whenever driving on public roads. To increase visibility, use the lights and devices provided with your machine. For some equipment, install extra flashing warning lights.

Keep safety items in good condition. Replace missing or damaged items. An implement safety lighting kit is available from your John Deere dealer.



DX,FLASH -19-04JUN90

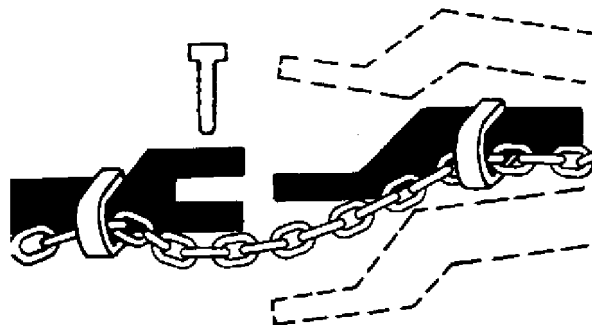
TS951 -UN-12APR90

USE A SAFETY CHAIN

A safety chain will help control drawn equipment should it accidentally separate from the drawbar.

Using the appropriate adapter parts, attach the chain to the tractor drawbar support or other specified anchor location. Provide only enough slack in the chain to permit turning.

See your John Deere dealer for a chain with a strength rating equal to or greater than the gross weight of the towed machine. Do not use safety chain for towing.



DX,CHAIN -19-04JUN90

TS217 -UN-23AUG88



TRANSPORT SEEDING TOOL SAFELY

Keep away from overhead power lines. Serious injury or death may result. Know the transport height of your machine.

Always fold wings fully. If wing fold cylinders are removed, chain wings together to prevent accidental lowering.

Install transport lockups on depth control cylinders and wing lock-up pins.

Maximum transport speed is 16 km/h (10 mph) when air seeder is attached. ALWAYS travel at a reasonable and safe speed.

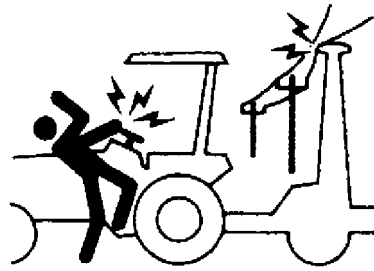
NEVER transport seeding tool with air seeder fan running.

Shift the tractor into a lower gear when transporting down steep slopes or hills.

Latch the tractor brakes together.

Stop slowly.

Upward force on hitch may cause instability when transporting. Add ballast to tractor as required.



N39394 -UN-06OCT88

NX,1060SO,C8 -19-10OCT90

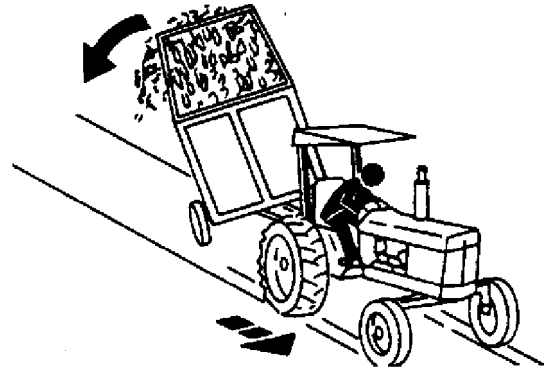


REDUCE SPEED WHEN TOWING LOADS

Braking to stop towed loads from transport speeds can cause the towed load to swerve and upset. Reduce speed if towed load weighs more than the tractor and is not equipped with brakes.

Follow recommended speed-weight ratio guidelines:

- Maximum speed is 32 km/h (20 mph) when towing load equal to or less in weight than the tractor.
- Reduce speed to 16 km/h (10 mph) when towing load up to double the tractor weight.
- Do not tow loads exceeding double the tractor weight.
- Use additional caution when towing loads under adverse surface conditions, when turning, and on inclines.



DX,TOW -19-27MAY92

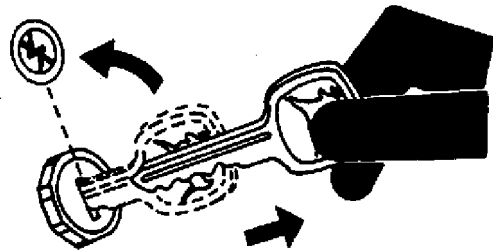
TS216 -UN-23AUG68

SERVICE SEEDING TOOL SAFELY

To help prevent personal injury caused by unexpected movement, be sure to service machine on level surface.

If machine is connected to tractor, engage parking brake and/or place transmission in "Park", shut off engine and remove key.

If machine is detached from seeder, block wheels and use safety stands to prevent movement.



NX,1060SO,C9 -19-13DEC88

TS230 -UN-24MAY89

N40000 -UN-28SEP88



SUPPORT RAISED EQUIPMENT

Put a support under all raised equipment. Never work under raised equipment without a support. If there is a failure in the hydraulic system, unsupported raised equipment could suddenly lower, causing serious personal injury or death.

If a support is not available, completely lower the wings and install transport lock-ups.



NX,1060SO,C10 -19-13DEC88

N39087 -UN-30MAR89

PRACTICE SAFE MAINTENANCE

Understand service procedure before doing work. Keep area clean and dry.

Never lubricate or service machine while it is moving. Keep hands, feet, and clothing from power-driven parts. Disengage all power and operate controls to relieve pressure. Lower equipment to the ground. Stop the engine. Remove the key. Allow machine to cool.

Securely support any machine elements that must be raised for service work.

Keep all parts in good condition and properly installed. Fix damage immediately. Replace worn or broken parts. Remove any buildup of grease, oil, or debris.

Disconnect battery ground cable (-) before making adjustments on electrical systems or welding on machine.



DX,SERV -19-04JUN90

TS218 -UN-23AUG88



Suggest:

For more complete manuals. Please go to the home page.

<https://www.ebooklibonline.com>

If the above button click is invalid. Please download this document first, and then click the above link to download the complete manual.

Thank you so much for reading



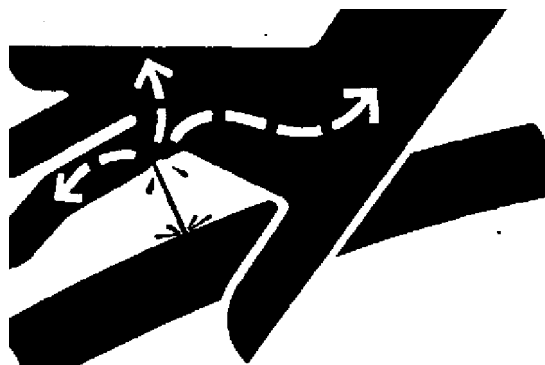
AVOID HIGH-PRESSURE FLUIDS

Escaping fluid under pressure can penetrate the skin causing serious injury.

Avoid the hazard by relieving pressure before disconnecting hydraulic or other lines. Tighten all connections before applying pressure.

Search for leaks with a piece of cardboard. Protect hands and body from high pressure fluids.

If an accident occurs, see a doctor immediately. Any fluid injected into the skin must be surgically removed within a few hours or gangrene may result. Doctors unfamiliar with this type of injury should reference a knowledgeable medical source. Such information is available from Deere & Company Medical Department in Moline, Illinois, U.S.A.



X9811 -UN-23AUG88

DX,FLUID -19-09AUG91

SERVICE TIRES SAFELY

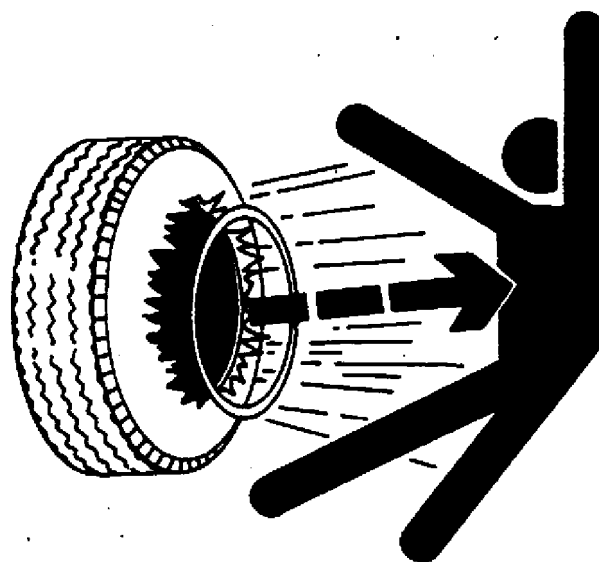
CAUTION: Explosive separation of a tire and rim parts can cause serious injury or death.

Only attempt to mount a tire if you have the proper equipment and experience to perform the job. Have it done by your John Deere dealer or a qualified tire repair service.

Always maintain the correct tire pressure. Do not inflate the tires above the recommended pressure.

When inflating tires, use a clip-on chuck and extension hose long enough to allow you to stand on one side and NOT in front of or over the tire assembly. Use a safety cage if available.

Inspect tires and wheels daily. Do not operate with low pressure, cuts, bubbles, damaged rims or missing lug bolts and nuts.



T5211 -UN-23AUG88

1N4,610C,A5 -19-27SEP91



STAY CLEAR OF ROW MARKERS

ALWAYS stay clear of markers when raising and lowering.

Be sure cylinder and attaching hoses are fully charged with oil before removing marker lockup strap. Failure to do so will allow marker to fall rapidly. Secure marker in upright position with marker lockup strap for transport service or storage.



NX,1060SO,C12B -19-13AUG91

N39213 -UN-22SEP88

IDENTIFY SIGNAL WORDS IN THIS MANUAL

“CAUTIONS” are presented in bold type, and indicate there is a possibility of injury to you or other people.

“IMPORTANT” are also presented in bold type, and indicate there is a possibility of damage to the machine.

“NOTES” are separated from the text in italics. They provide additional information that is an exception to a previous statement or is not directly related to the original subject.

NX,1060SO,C12 -19-13DEC88

<https://www.ebooklibonline.com>

Hello dear friend!

Thank you very much for reading.

Enter the link into your browser.

The full manual is available for immediate download.

<https://www.ebooklibonline.com>