

編 番
PART NO.
P12H-E1-7

PARTS LIST

パーツリスト

EX120

EQUIPMENT COMPONENTS PARTS

機器 インナーパーツ

EX120 EQUIPMENT COMPONENTS PARTS LIST

P12H-E1-7

適用号機 15001~
Serial No.



FOREWORD

- ⊙ This parts list shows the precision parts of EX120 Hydraulic excavator.
The numerical parts No. index is provided at the end of this parts list.
In the parts index, a part No. with "*" mark shows a newly added part on the parts list.
- ⊙ This parts list contains the most recent information available at the time of printing, and the contents of the list are based on information in effect at that time and are subject to change without notice.
- ⊙ The references in the parts list of "LEFT", "RIGHT", "FRONT" and "REAR" are identified as follows.
The driver's seat is positioned "LEFT" side, and the opposite side is "RIGHT".
The front attachment is at the "FRONT". The counterweight is attached at the "REAR".
For the track, the travel motor is at the "REAR", and the opposite is "FRONT".

1. HOW TO ORDER PARTS

When ordering parts, Please specify the following items as shown in the following example.

| (EXAMPLE) | | |
|----------------------------------|-------------|---|
| (1) Model of Machine | (EX120) | } Shown on NAME-PLATE provided on MAIN FRAME on the lower right side of CAB |
| (2) Machine Serial No. | (12H-15001) | |
| (3) Part No. | (A810165) | } Ordering Parts |
| (4) Part Name | (O-RING) | |
| (5) Q'ty | (2) | Ordering Q'ty |
| (6) Purchaser's Name and Address | | |

2. HOW TO USE THIS PARTS LIST

- ITEM Item No. Shows the reference No. on the machine illustration.
- PART NO. Part No. consists of a letter of the alphabet and numerals, or numerals only.

- PART NAME Components of an assembly part are shown with "." marks and are shown on the line, or lines, below the assembly part. Also, if the component with "." mark consists of further components part, these further components are shown by the marks "...".
- Q'TY Q'ty shows the quantity used for a particular single hydraulic unit, however quantity of components shows the quantity for one assembly part.
- SERVICE CODE Abbreviations in the column of service code have their own meaning as shown below.
- W: The part with this abbreviation shows that the part requires some work on it before installing in the machine.
 - D: The part with this abbreviation is a component of an assembly and is not available independently. The assembly part containing this part should be ordered.
 - K: This means that the part is contained in the service parts kit.
 - R: The part with this abbreviation shows that the quantity of the part is changed depending upon the machine, such as an adjusting shim etc.
 - S: This part is specially provided as a service part, which was not provided in the machine before from shipping the factory.
 - OP: Optional parts
 - OS: Over-sized parts
 - US: Under-sized parts
- (NOTE: Part with abbreviation "OS" or "US" is described on the line below the Standard-sized part.)
- #: The part with this mark is newly added on that page of the equipment.
- SERIAL No. Applicable machine serial No. for the part is shown in this column. Further, above this column, the applicable serial No. is shown for all parts described on that page.
- Take this serial No. if the part is not mentioned its own applicable serial No. Take the serial No. which includes both of for the part and for all parts described on the page if the part is mentioned its own applicable serial No. If the abbreviation "D" is described as headed letter instead of the serial No. it means the produced date of the machine in which the parts are used. (EXAMPLE: D88/04~.....produced on April 1988 and after)
- If the abbreviation "H" is described as headed letter, it means the serial No. of equipment such as PUMP, MOTOR, CONTROL VALVE etc.
- If the abbreviation "F" is described as headed letter, it means the Front No. of front attachment such as BUCKET, BOOM, ARM etc.

<https://www.ebooklibonline.com>

Hello dear friend!

Thank you very much for reading.

Enter the link into your browser.

The full manual is available for immediate download.

<https://www.ebooklibonline.com>

•ICA

ICA shows the interchangeability between the original and the improved parts.
Abbreviations used in this column are as follows :

- I: Part No. in the column of "Replaceable part" can be used instead of this part but not vice versa.
- P: This must not be used for the machine. The part No. in the column "Replaceable part" should be used instead.
- T: Parts Nos. those in the column of "Replaceable part" can be used as an assembly instead of this part.
- Y: This part and the part in the column of "Replaceable part" are interchangeable with each other.

•REPLACEABLE PART

Interchangeable parts Nos. and their required quantity are shown in this column.

NOTE: If interchangeable improved parts are provided for the parts which you may order, the improved parts classified as "I", "P", "T" or "Y" may be supplied.

目 次
CONTENTS

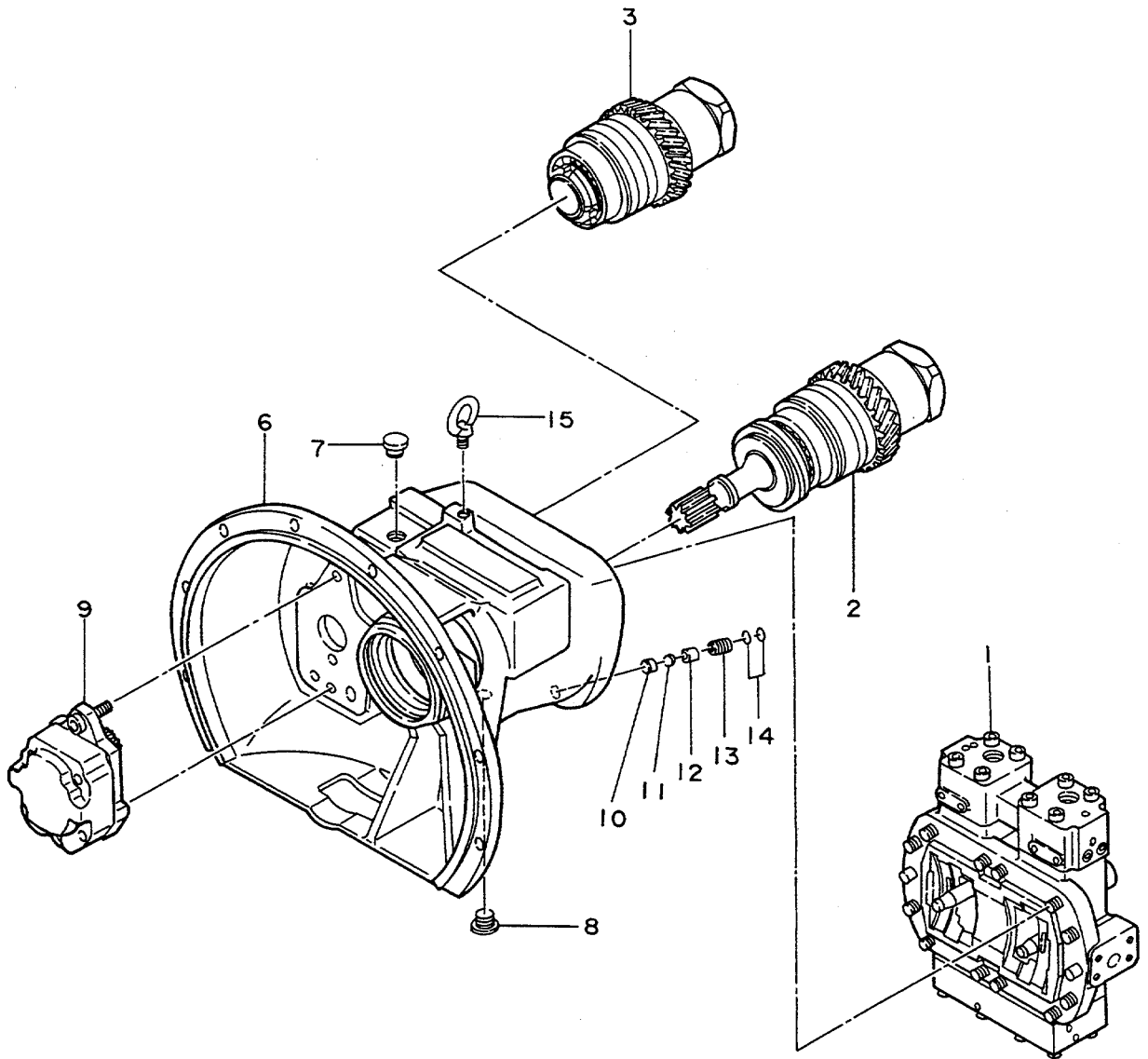
P B - 1 8 8
P B - A 3 7

| 部品番号 PART NO. | コード CODE | 部 品 名 | PART NAME | 適用号機 SERIAL NO. | 頁 PAGE |
|------------------|-------------|-------------------|----------------------------|--------------------------------------|-----------|
| ポンプ | | P U M P | | | |
| 4176903 | 0312500A | ポンプ;ピストン | PUMP;PISTON | | 001 |
| 4206913 | 0311700A | ・レギュレータ | ・REGULATOR | | 003 |
| 4206917 | 0311800A | ・レギュレータカバー部 | ・REGULATOR COVER PART | | 005 |
| 4206918 | 0311900A | ・切換弁カバー部 | ・VALVE COVER PART | | 007 |
| 4206919 | 0312000 | ・コントロール部 | ・CONTROL PART | | 009 |
| 4206914 | 0312100 | ・ロータリグループ(駆動側) | ・ROTARY GROUP (DRIVE SIDE) | | 011 |
| 4206915 | 0312200 | ・ロータリグループ(非駆動側) | ・ROTARY GROUP (IDLER SIDE) | | 013 |
| 4206916 | 0312300A | ・パイロットギヤポンプ | ・PILOT GEAR PUMP | | 015 |
| モータ;オイル | | M O T O R ; O I L | | | |
| 4199025 | 0311300 | モータ;オイル(旋回) | MOTOR;OIL (SWING) | 15001~18866 18877~18954 18967, | 017 |
| 4206609 | 0311400 | ・バルブ;リリーフ | ・VALVE;RELIEF | | 019 |
| 4224976 | ----- | モータ;オイル(旋回) | MOTOR;OIL (SWING) | 18867~18876 18955~18966 18968~ | --- |
| ++++++ | 0356700A1 | ・モータ;オイル(1/2) | ・MOTOR;OIL (1/2) | | 021 |
| ++++++ | 0356700A2 | ・モータ;オイル(2/2) | ・MOTOR;OIL (2/2) | | 023 |
| 4206609 | 0311400 | ・バルブ;リリーフ | ・VALVE;RELIEF | | (019) |
| 9065907 | 9065907 | モータ;オイル(走行) | MOTOR;OIL (TRAVEL) | 15001~18866 | 025 |
| 9065906 | 9065906A | ・バルブ;ブレーキ | ・VALVE;BRAKE | 15001~18866 | 027 |
| 9065995 | 9065995 | ・バルブ;リリーフ | ・VALVE;RELIEF | 15001~18866 | 029 |
| 9080113 | 9080113A | モータ;オイル(走行) | MOTOR;OIL (TRAVEL) | 18867~ | 031 |
| 9080511 | 9080511A | ・バルブ;ブレーキ | ・VALVE;BRAKE | 18867~ | 033 |
| 9080500 | 9080500A | ・バルブ;リリーフ | ・VALVE;RELIEF | 18867~ | 035 |
| バルブ | | V A L V E | | | |
| 4176905 | 0309500A | バルブ;コントロール | VALVE;CONTROL | 15001~18866 | 037 |
| 4224897 | ----- | バルブ;コントロール | VALVE;CONTROL | 18867~ | --- |
| ++++++ | 0357700A1 | ・バルブ;コントロール(1/5) | ・VALVE;CONTROL (1/5) | | 039 |
| ++++++ | 0357700B2 | ・バルブ;コントロール(2/5) | ・VALVE;CONTROL (2/5) | | 041 |

| 部品番号 PART NO. | コード CODE | 部品名 | PART NAME | 適用号機 SERIAL NO. | 頁 PAGE |
|------------------|-------------|-------------------|----------------------|--------------------|-----------|
| ++++++ | 0357700B3 | ・バルブ;コントロール (3/5) | ・VALVE;CONTROL (3/5) | | 043 |
| ++++++ | 0357700A4 | ・バルブ;コントロール (4/5) | ・VALVE;CONTROL (4/5) | | 045 |
| ++++++ | 0357700A5 | ・バルブ;コントロール (5/5) | ・VALVE;CONTROL (5/5) | | 047 |
| 9071984 | 9071984A | バルブ;パイロット | VALVE;PILOT | 15001~D90/06 | 049 |
| # 9107499 | 9107499 | バルブ;パイロット | VALVE;PILOT | D90/07~ | 051 |
| 9071983 | 9071983D | バルブ;パイロット | VALVE;PILOT | | 053 |
| 9059848 | 9059848B | バルブ;パイロット | VALVE;PILOT | | 055 |
| 9072923 | 9072923 | バルブ;パイロット | VALVE;PILOT | 15001~H00783 | 057 |
| 9072923 | 9072923C | バルブ;パイロット | VALVE;PILOT | H00784~ | 059 |
| 4196411 | 0308700A | バルブ;ソレノイド | VALVE;SOLENOID | | 061 |
| 9072360 | 9072360A | バルブ;チェック | VALVE;CHECK | | 063 |
| 4188553 | 0309800A | バルブ;ショックレス | VALVE;SHOCKLESS | | 065 |
| 4179025 | 0309900 | バルブ;ロック | VALVE;LOCK | 15001~16224 | 067 |
| 4179025 | 0309900B | バルブ;ロック | VALVE;LOCK | 16225~ | 069 |
| 4209994 | 0322100 | バルブ;リリース | VALVE;RELIEF | | 071 |
| 4201401 | 0370200 | バルブ;ホールディング | VALVE;HOLDING | | 073 |
| 4204085 | 0370300 | バルブ;ホールディング | VALVE;HOLDING | | 075 |
| 4230192 | 0370400 | バルブ;ホールディング | VALVE;HOLDING | | 077 |
| 4206538 | 0370500 | バルブ;ホールディング | VALVE;HOLDING | | 079 |
| シリンダ | | | CYLINDER | | |
| 4187910 | 0310700B | シリンダ;ブーム (右) | CYL.;BOOM (R) | | 081 |
| 4187911 | 0310800B | シリンダ;ブーム (左) | CYL.;BOOM (L) | | 083 |
| 4187912 | 0310900B | シリンダ;アーム | CYL.;ARM | | 085 |
| 4187913 | 0311000B | シリンダ;バケット | CYL.;BUCKET | | 087 |
| 4207441 | 0317900 | シリンダ;クラムシェル | CYL.;CLAMSHELL | | 089 |

001

ポンプ;ピストン
PUMP;PISTON



0312500A



Suggest:

For more complete manuals. Please go to the home page.

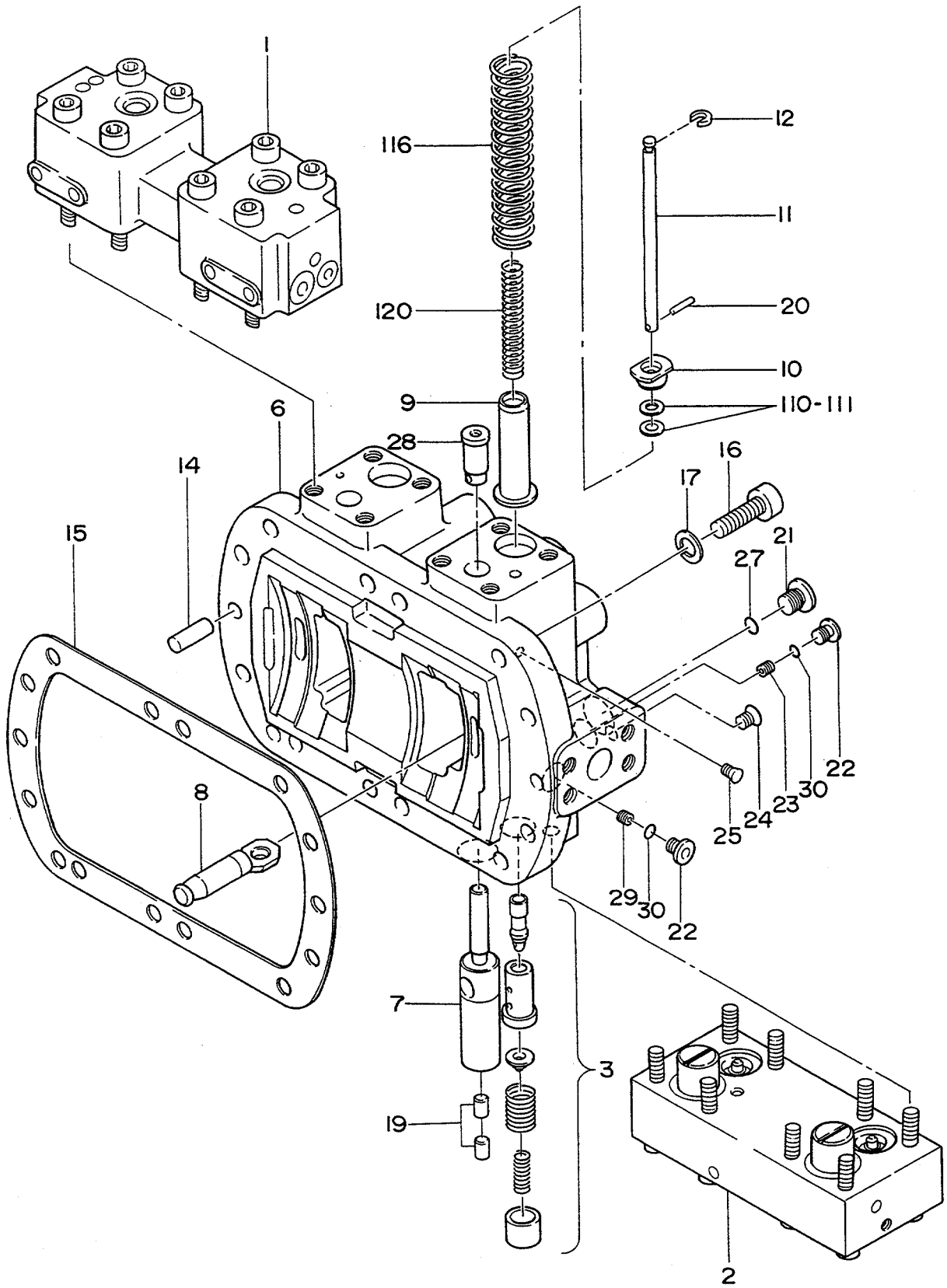
<https://www.ebooklibonline.com>

If the above button click is invalid. Please download this document first, and then click the above link to download the complete manual.

Thank you so much for reading

003

レギュレータ
REGULATOR



0311700A

REGULATOR

15001~

| 符号 ITEM | 部品番号 PART NO. | 部 品 名 PART NAME | or PART NAME CODE | 数量 Q'TY | サービス コード S.C | 適用号機 SERIAL NO. | 互 換 性 ICA | 代 替 部 品 REPLACEABLE PART | |
|------------|------------------|-----------------------|----------------------|------------|--------------------|--------------------|--------------------|--------------------------------|------------|
| | | | | | | | | 部品番号 PART NO. | 数量 Q'TY |
| 1 | 4206913 | REGULATOR | 0311700A | 1 | | | | | |
| | 4206917 | ・REGULATOR COVER PART | 0311800A | 1 | | | | | |
| 2 | 4206918 | ・VALVE COVER PART | 0311900A | 1 | | | | | |
| 3 | 4206919 | ・CONTROL PART | 0312000 | 2 | | | | | |
| 6 | +++++ | ・BODY | | 1 | D | | | | |
| 7 | +++++ | ・PISTON | | 2 | D | | | | |
| 8 | +++++ | ・ROD | | 2 | D | | | | |
| 9 | 0215007 | ・RETAINER | | 2 | | | | | |
| 10 | 0215008 | ・RETAINER | | 2 | | | | | |
| 11 | 0215013 | ・ROD | | 2 | | | | | |
| 12 | 0215014 | ・SPACER | | 2 | | | | | |
| 14 | 0215018 | ・PIN | | 2 | | | | | |
| 15 | 0311701 | ・PACKING | | 1 | | | | | |
| 16 | 0215020 | ・BOLT;SOCKET | | 12 | | | | | |
| 17 | 0215021 | ・WASHER;SPRING | | 12 | | | | | |
| 19 | +++++ | ・SCREW;SET | | 4 | D | | | | |
| 20 | 0215023 | ・PIN;SPRING | | 2 | | | | | |
| 21 | 0215221 | ・PLUG | | 2 | | | | | |
| 22 | 0215015 | ・PLUG | | 4 | | ~ 18967 | | | |
| 22 | 4255302 | ・PLUG | | 4 | | 18968~ | | | |
| 23 | 0311702 | ・ORIFICE | | 2 | | | | | |
| 24 | +++++ | ・PLUG | | 1 | D | | | | |
| 25 | +++++ | ・PLUG | | 2 | D | | | | |
| 27 | 957366 | ・O-RING | | 2 | | | | | |
| 28 | 0311703 | ・RETAINER | | 2 | | | | | |
| 29 | 0311704 | ・ORIFICE | | 2 | | | | | |
| 30 | 4506408 | ・O-RING | | 4 | | 18968~ | | | |
| 110 | 0311705 | ・SHIM 0.5 | | 2 | | | | | |
| 111 | 0215803 | ・SHIM 1.0 | | 2 | | | | | |
| 116 | 0311706 | ・SPRING | | 2 | | | | | |
| 120 | 0311707 | ・SPRING | | 2 | | | | | |

<https://www.ebooklibonline.com>

Hello dear friend!

Thank you very much for reading.

Enter the link into your browser.

The full manual is available for immediate download.

<https://www.ebooklibonline.com>