

編 番  
PART NO.  
PIE3-EI-4

# **PARTS CATALOG**

## **パーツカタログ**

# **EX100-5 Series** **シリーズ**

## **EQUIPMENT COMPONENTS PARTS**

機器インナーパーツ

**EX100-5**

**EX100M-5**

**EX110M-5**

**EX100-5E**

適用号機 001001~  
Serial No.

# **HITACHI**

メモ欄  
MEMORANDUM

下表を部品注文，機械管理等にご利用下さい。

Please utilize under-table for parts-order and maintenance of your machine, etc.

製品識別番号 Product Identification Number	
エンジン形式 Engine Type	
エンジン製番 Engine Mfg. No.	

## FOREWORD

- ◎ This parts catalog shows the precision parts of E EX100-5 Series (EX100-5, EX100M-5, EX110M-5, EX100-5E) Hydraulic Excavator.  
The numerical parts No. index is provided at the end of this parts catalog.  
In the parts index, a part No. with "\*" mark shows a newly added part on the parts catalog.
- ◎ This parts catalog contains the most recent information available at the time of printing, and the contents of the list are based on information in effect at that time and are subject to change without notice.
- ◎ The references in the parts catalog of "LEFT", "RIGHT", "FRONT", and "REAR" are identified as follows.  
The driver's seat is positioned "LEFT" side, and the opposite side is "RIGHT".  
The front-end attachments is at the "FRONT". The counterweight is attached at the "REAR".  
For the undercarriage, the travel motor is at the "REAR", and the opposite is "FRONT".

### 1. HOW TO ORDER PARTS

When ordering parts, Please specify the following items as shown in the following example.

	(EXAMPLE)	
(1) Model/type	(EX100-5)	} Shown on NAME-PLATE provided on MAIN FRAME on the lower right side of CAB
(2) Product Identification Number	(1E3P030001)	
(3) Part No.	(A810165)	} Ordering Parts
(4) Part Name	(O-RING)	
(5) Q' ty	(2)	Ordering Q' ty
(6) Purchaser's Name and Address		

### 2. HOW TO USE THIS PARTS CATALOG

- ITEM           Item No. shows the reference No. on the machine illustration.
- PART NO.       Part No. consists of a letter of the alphabet and numerical, or numerical only.
- PART NAME      Components of an assembly part are shown with "." marks and are shown on the line, or lines, below the assembly part. Also, if the component with "." mark consists of further components part, these further components are shown by the marks "...".

**<https://www.ebooklibonline.com>**

Hello dear friend!

Thank you very much for reading.

Enter the link into your browser.

The full manual is available for immediate download.

**<https://www.ebooklibonline.com>**

•Q'TY                    Q'ty shows the quantity used for a particular single hydraulic unit, however quantity of components shows the quantity for one assembly part.

•SERVICE CODE        Abbreviations in the column of service code have their own meaning as shown below.

W: The part with this abbreviation shows that the part requires some work on it before installing in the machine.

D: The part with this abbreviation is a component of an assembly and is not available independently. The assembly part containing this part should be ordered.

K: This means that the part is contained in the service parts kit.

R: The part with this abbreviation shows that the quantity of the part is changed depending upon the machine, such as an adjusting shim etceteras.

S: This part is specially provided as a service part, which was not provided in the machine before from shipping the factory.

OP: Optional parts

OS: Over-sized parts

US: Under-sized parts

(NOTE: Part with abbreviation "OS" or "US" is described on the line below the standard-sized part.)

#: The part with this mark is newly added on that page of the equipment.

•SERIAL No.            The machine serial number is printed just above the SERIAL No. column on all parts list pages.

[The serial number corresponds to the figures following the letter P in the PIN (Product Identification Number) on the name-plate.]

This serial number indicates the machine serial number applicable to the group unit (or component) described on this page.

When parts are modified, both the old and new parts are shown in the parts catalog with the applicable machine serial numbers in the SERIAL No. column.

Be sure to check that the your machine serial number is included in the range of the serial numbers shown above or in the SERIAL No. column when selecting parts.

Descriptions starting with letter D indicate the date when the part was replaced. (Example: "D95/12-" means that this part was replaced December '95.)

Descriptions starting with letter H indicate the component manufacturing No. stamped on the component manufacturing No. plate.

Description stating with letter F indicate the Front attachment manufacturing No. stamped on the front attachment manufacturing No. plate.

The letter H or F is used to identify the component or front attachment manufacturing No. from the machine serial number.

•ICA                    ICA shows the interchangeability between the original and the improved parts. Abbreviations used in this column are as follows.

- I: Part No. in the column of "Replaceable part" can be used instead of this part but not vice versa.
- P: This must not be used for the machine. The part No. in the column "Replaceable part" should be used instead.
- T: Parts Nos. those in the column of "Replaceable part" can be used as an assembly instead of this part.
- Y: This part and the part in the column of "Replaceable part" are interchangeable with each other.

•REPLACEABLE PART

Interchangeable parts Nos. and their required quantity are shown in this column.

NOTE: If interchangeable improved parts are provided for the parts which you may order, the improved parts classified as "I", "P", "T" or "Y" may be supplied.

目 次  
CONTENTS

PB-134  
PB-A12  
CONTROL-1416

部品番号 PART NO.	コード CODE	部 品 名	PART NAME	適用号機 SERIAL NO.	頁 PAGE
ポンプ			PUMP		
9151412	9151412	ポンプ装置	PUMP DEVICE		001
+++++++	9151411	・ポンプ;ユニット	・PUMP;UNIT		003
9151410	9151410	・レギュレータ	・REGULATOR		005
4276918	0450900B	・ポンプ;ギヤ	・PUMP;GEAR		007
9158021	9158021	ポンプ装置 (ブレード)	PUMP DEVICE (BLADE)		009
+++++++	9158022	・ポンプ;ユニット	・PUMP;UNIT		011
9158023	9158023	・レギュレータ	・REGULATOR		013
4278696	0451400A	・ポンプ;ギヤ	・PUMP;GEAR		015
4278696	0451400A	ポンプ;ギヤ	PUMP;GEAR		(015)
モータ;オイル			MOTOR;OIL		
4330218	0672500	モータ;オイル (旋回)	MOTOR;OIL (SWING)		017
4373197	0668700	・ロータリ グループ	・ROTARY GROUP		019
4373198	0668800	・シャフト部	・SHAFT PART		021
4373199	0668900	・カバー部	・COVER PART		023
4373201	0669000	・バルブ;リリーフ	・VALVE;RELIEF		025
4373200	0669100	・バルブ;タイマ	・VALVE;TIMER		027
9132360	9132360A	モータ;オイル (走行) <100-5, 100-5E>	MOTOR;OIL (TRAVEL) <100-5, 100-5E>		029
9132208	9132208A	・バルブ;ブレーキ	・VALVE;BRAKE		031
9144846	9144846	・バルブ;リリーフ	・VALVE;RELIEF	001001-H00780	033
9159923	9159923	・バルブ;リリーフ	・VALVE;RELIEF	H00781-	035
4301547	-----	走行装置 <100M-5, 110M-5>	TRAVEL DEVICE <100M-5, 110M-5>		---
4378661	-----	・モータ;オイル	・MOTOR;OIL		---
+++++++	0670900	・モータ;オイル (1/2)	・MOTOR;OIL (1/2)		037
+++++++	0671000	・モータ;オイル (2/2)	・MOTOR;OIL (2/2)		039
4378662	0671100	・バルブ;リリーフ	・VALVE;RELIEF		041
4378663	0671200	・トランスミッション	・T. MISSION		043
バルブ			VALVE		
4330216	-----	バルブ;コントロール	VALVE;CONTROL		---
+++++++	0673300	・バルブ;コントロール (1/10)	・VALVE;CONTROL (1/10)		045
+++++++	0673400	・バルブ;コントロール (2/10)	・VALVE;CONTROL (2/10)		047

部品番号 PART NO.	コード CODE	部品名	PART NAME	適用号機 SERIAL NO.	頁 PAGE
+++++++	0673500	・バルブ;コントロール (3/10)	・VALVE;CONTROL (3/10)		049
+++++++	0673600A	・バルブ;コントロール (4/10)	・VALVE;CONTROL (4/10)		051
+++++++	0673700A	・バルブ;コントロール (5/10)	・VALVE;CONTROL (5/10)		053
+++++++	0673800	・バルブ;コントロール (6/10)	・VALVE;CONTROL (6/10)		055
+++++++	0673900	・バルブ;コントロール (7/10)	・VALVE;CONTROL (7/10)		057
+++++++	0674000	・バルブ;コントロール (8/10)	・VALVE;CONTROL (8/10)		059
+++++++	0674100	・バルブ;コントロール (9/10)	・VALVE;CONTROL (9/10)		061
+++++++	0674200	・バルブ;コントロール (10/10)	・VALVE;CONTROL (10/10)		063
4361117	0686900	バルブ;コントロール	VALVE;CONTROL		065
9149232	9149232A	バルブ;パイロット (フロント, 旋回)	VALVE;PILOT (FRONT & SWING)	100-5 :001001-001092 100M-5:001001-001092 110M-5:001001-001092	067
9156581	9156581A	バルブ;パイロット (フロント, 旋回)	VALVE;PILOT (FRONT & SWING)	100-5 :001093- 100M-5:001093- 110M-5:001093- 100-5E:001001-	069
9151777	9151777	バルブ;パイロット (走行)	VALVE;PILOT (TRAVEL)		071
9137384	9137384	バルブ;パイロット	VALVE;PILOT		073
4330467	0630700A	バルブ;パイロット	VALVE;PILOT		075
4330228	0669200	バルブ;フロウコントロール	VALVE;FC		077
4367131	0672600	バルブ;フロウコントロール	VALVE;FC		079
4355440	0671300	バルブ;ソレノイド	VALVE;SOLENOID		081
4273526	0444300A	バルブ;ソレノイド	VALVE;SOLENOID		083
4351142	0670500	バルブ;リリーフ	VALVE;RELIEF		085
4334827	0668300	バルブ;ロック	VALVE;LOCK		087
4203447	0361000A	バルブ;シャトル	VALVE;SHUTTLE		089
4282545	0672700	バルブ;ロータリ	VALVE;ROTARY		091
4203446	0687400	バルブ	VALVE		093
4345286	0620300	バルブ;ホールディング	VALVE;HOLDING		095
9149057	0669400	バルブ;ホースラプチャ	VALVE;HOSE-RUPTURE		097
シリンダ		CYLINDER			
4312228	0674900	シリンダ;ブーム (右)	CYL.;BOOM (R)		099
4372544	0659500	シリンダ;ブーム (右) [側溝掘]	CYL.;BOOM (R) [OFFSET BOOM]		101
4312229	0675000	シリンダ;ブーム (左)	CYL.;BOOM (L)		103
4372542	0659600	シリンダ;ブーム (左) [側溝掘]	CYL.;BOOM (L) [OFFSET BOOM]		105
4314895	0675100	シリンダ;アーム	CYL.;ARM		107
4371393	0659700	シリンダ;アーム [側溝掘]	CYL.;ARM [OFFSET BOOM]		109

部品番号 PART NO.	コード CODE	部 品 名	PART NAME	適用号機 SERIAL NO.	頁 PAGE
4316457	0667100	シリンダ;バケット	CYL. ;BUCKET		111
4288744	0496600A	シリンダ;クラムシェル	CYL. ;CLAMSHELL		113
4371394	0659800	シリンダ;オフセット	CYL. ;OFFSET		115
4359928	0686700	シリンダ;ブレード (右)	CYL. ;BLADE (R)	001001-002426	117
4397512	0727100	シリンダ;ブレード (右)	CYL. ;BLADE (R)	002427-D99/12	119
4432510	0779200	シリンダ;ブレード (右)	CYL. ;BLADE (R)	D00/01-	121
4361273	0686800	シリンダ;ブレード (左)	CYL. ;BLADE (L)	001001-002426	123
4397513	0727400	シリンダ;ブレード (左)	CYL. ;BLADE (L)	002427-D99/12	125
4432509	0779300	シリンダ;ブレード (左)	CYL. ;BLADE (L)	D00/01-	127

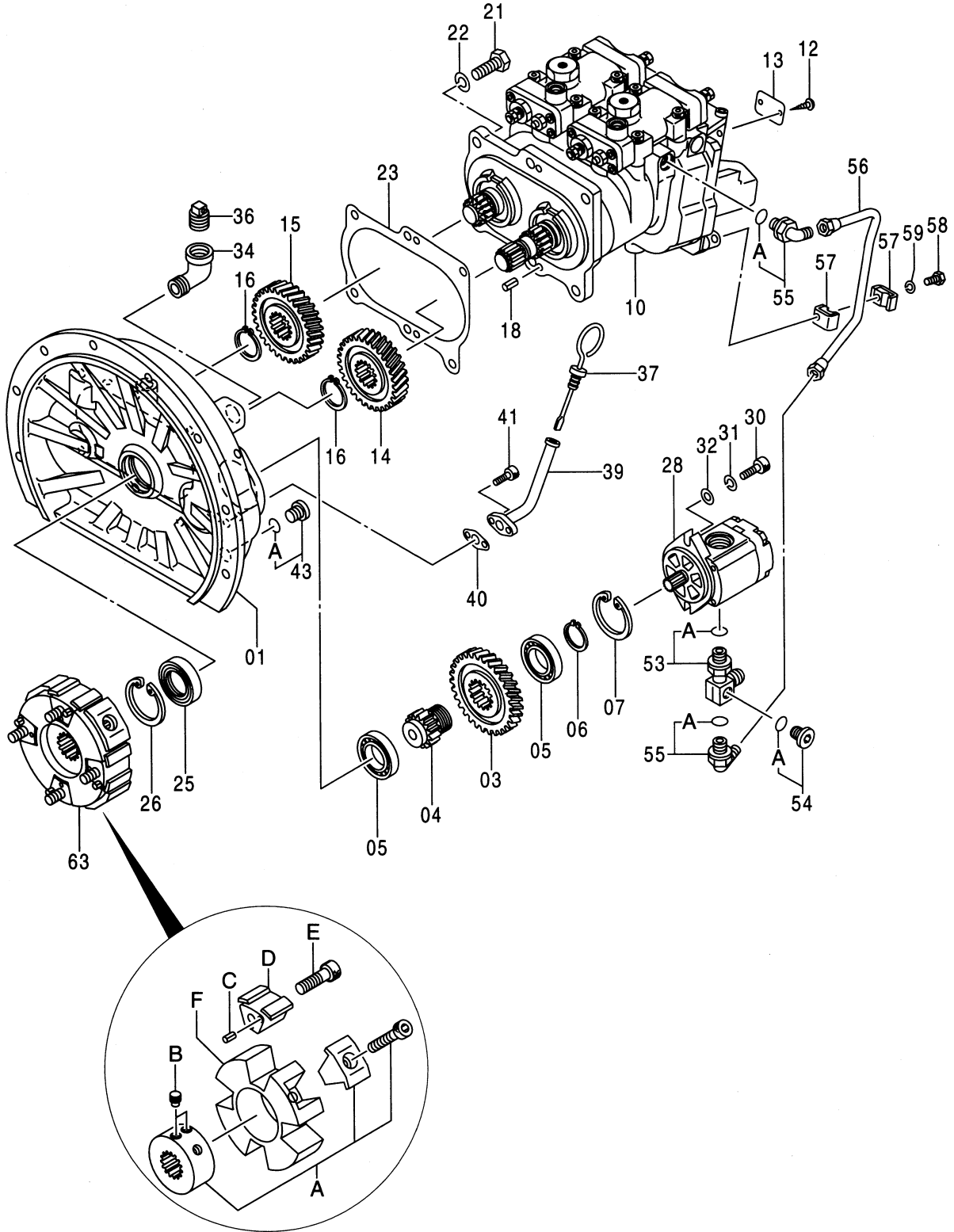
索 引

PARTS INDEX

129

001A

ポンプ装置  
PUMP DEVICE



9151412



**Suggest:**

**For more complete manuals. Please go to the home page.**

**<https://www.ebooklibonline.com>**

**If the above button click is invalid. Please download this document first, and then click the above link to download the complete manual.**

**Thank you so much for reading**

ポンプ装置  
PUMP DEVICE

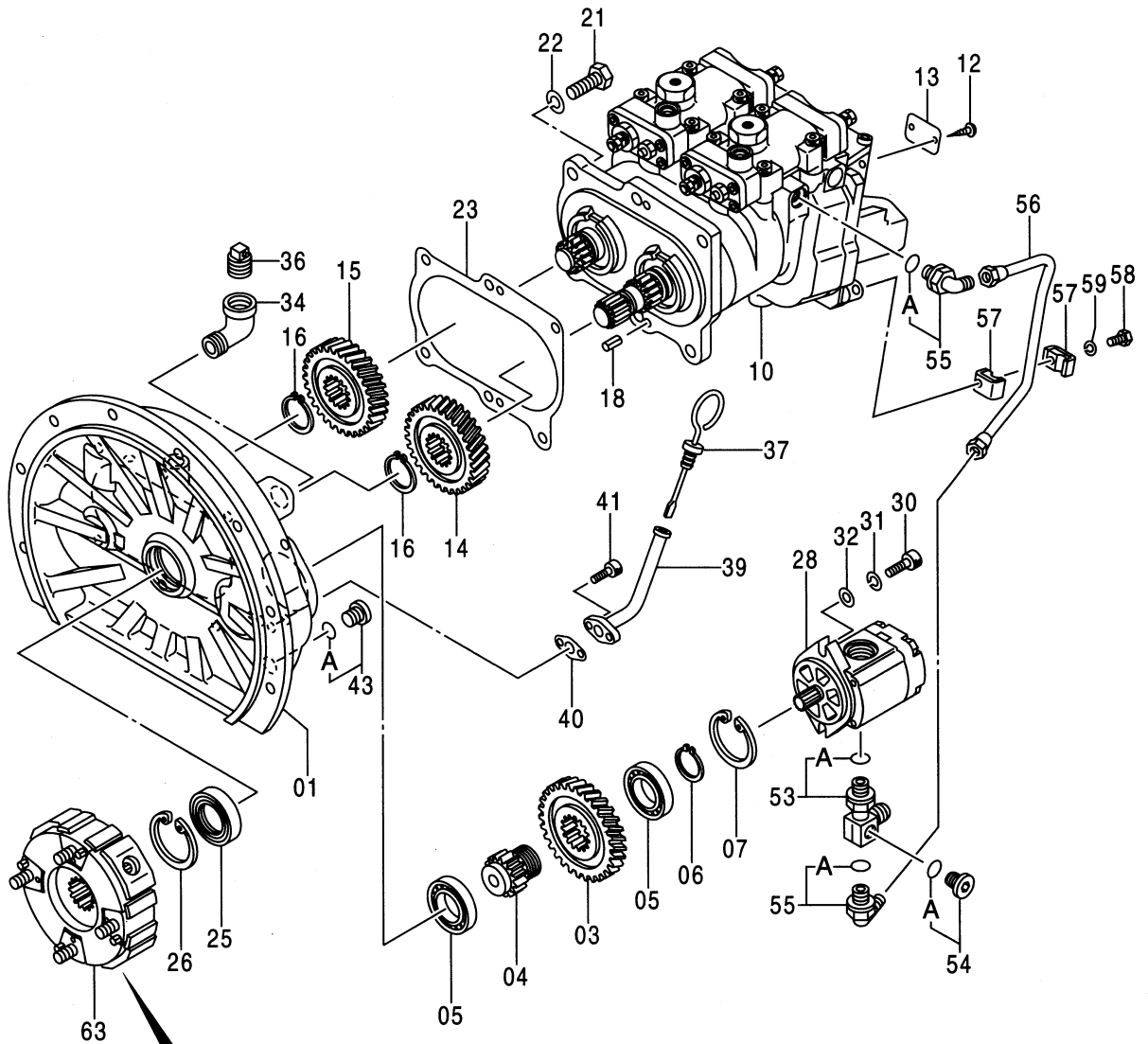
001001-

符号 ITEM	部品番号 PART NO.	部品名 PART NAME	コード CODE	数量 Q' TY	サービス コード S. C	適用号機 SERIAL NO.	互換性 ICA	代替部品 REPLACEABLE PART	
								部品番号 PART NO.	数量 Q' TY
	9151412	PUMP DEVICE <for assembly of machine>	9151412	1			I	9152593	1
	(9152593)	PUMP DEVICE <for transportation>		1	S				
01	1022569	・CASING;GEAR		1					
03	3070066	・GEAR;PILOT		1					
04	3055594	・SHAFT;GEAR		1					
05	958740	・BRG. ;BALL		2					
06	962002	・RING;RETAINING		1					
07	991725	・RING;RETAINING		1					
10	+++++	・PUMP;UNIT	9151411	1	D				
12	M492564	・SCREW;DRIVE		2					
13	3075866	・NAME-PLATE		1					
14	3070062	・GEAR		1					
15	3070063	・GEAR		1					
16	962002	・RING;RETAINING		2					
18	4099290	・PIN;SPRING		2					
21	J901445	・BOLT		6					
22	A590914	・WASHER;SPRING		6					
23	8060011	・PACKING		1					
25	4340328	・SEAL;OIL		1					
26	930451	・RING;RETAINING		1					
28	4276918	・PUMP;GEAR	0450900B	1					
30	M341028	・BOLT;SOCKET		2					
31	984054	・WASHER;SPRING		2					
32	4114402	・WASHER		2					
34	94-0649	・ELBOW		1					
36	4234782	・PLUG		1					
37	4242263	・GAUGE;LEVEL		1					
39	9745521	・PIPE		1					
40	9742779	・PACKING		1					
41	M340816	・BOLT;SOCKET		2					
43	9134111	・PLUG		1					
43A	4509180	・・O-RING		1					
53	4278547	・ADAPTER		1					
53A	4506418	・・O-RING		1					
54	9134110	・PLUG		1					
54A	957366	・・O-RING		1					
55	4179837	・FITTING;PIPE		2		-H01978	Y	4293950	2
55	4293950	・ELBOW;S		2	#	H01979-			

P1E3-E1-4

001B

# ポンプ装置 PUMP DEVICE



9151412

**<https://www.ebooklibonline.com>**

Hello dear friend!

Thank you very much for reading.

Enter the link into your browser.

The full manual is available for immediate download.

**<https://www.ebooklibonline.com>**