

Parts Manual
Catalogo Parti Ricambi
Manuel des Pièces de Rechange
Ersatzteilkatalog
Manual de Repuestos

CE

T2500027

MS12-15S

Yale 

T2500054

FIGURE index / <i>Indice delle tavole</i> / Index des tables / <i>Tafelverzeichnis</i> / Indice de tablas	page 3-4
Legend of symbols used in this handbook / <i>Legenda simbologia impiegata sul catalogo</i> / Legende symbolique utilisée sur catalogue / <i>Legende der Katalogsymbole</i> / Leyenda simbología empleada en el catálogo	page 4
How to use the handbook / <i>Uso del catalogo</i> / Utilisation du catalogue / <i>Nachschlagen des Katalogs</i> / Uso del catálogo	page 5
Frame / <i>Telaio</i> / Chassis / <i>Rahmen</i> / Bastidor (FIGURE 1)	page 6-7
Support and wheel / <i>Supporto e ruota</i> / Support et attelage / <i>Lagern und räder</i> / Soporte y rueda (FIGURE 2)	page 8-9
Duplex Masts / <i>Montanti Duplex</i> / Mat Duplex / <i>Duplex Hubgerüst</i> / Mastil Dúplex (FIGURE 3)	page 10-11
Triplex Masts / <i>Montanti Triplex</i> / Mat Duplex / <i>Triplex Hubgerüst</i> / Mastil Triplex (FIGURE 4).....	page 12-13
Hydraulic cylinders / <i>Cilindri idraulici</i> / Cilindres ydrauliques / <i>Hydraulik Zylindre</i> / Cilindro hidraulics (FIGURE 5).....	page 14-15
Forks / <i>Forche</i> / Fourches / <i>Forke</i> / Horcas - (FIGURE 6).....	page 16-17
Wire net / <i>Reti di protezione</i> / Grillage/ <i>Drahnetz</i> / Red (FIGURE 7).....	page 18-19
Hydraulic System / <i>Impianto Idraulico</i> / Installation Hydraulique / <i>Hydraulikanlage</i> / Instalacion Hidraulica (FIGURE 8).....	page 20-21
Distrubutor / <i>ICentralina idraulica</i> / Distributeur / <i>Steuerung</i> / Distribuidor (FIGURE 9).....	page 22-23
Electronic system / <i>Impianto elettronico</i> / Installation électronique / <i>Elektronik</i> / Instalacion electronica (FIGURE 10)	page 24-25
Electric power steering / <i>Sterzo elettrico</i> / <i>Groupe dedirection électrique</i>) / <i>Elektrische sthheurungb</i> / <i>Direccion eletrico</i> (FIGURE 11).....	page 26-27
Brake system / <i>Impianto freni</i> / Installation freins / <i>Bremsanlage</i> / Equipo de frenos (FIGURE 12)	page 28-29
Reduction unit / <i>Riduttore</i> / Reducteur / <i>Untersetzerachse</i> / Reductor (FIGURE 13).....	page 30-31
Traction motor / <i>Motore di trazione</i> / Moteur de traction / <i>Zugmotor</i> / Motor de traccion (FIGURE 14).....	page 32-33
Labels / <i>Adesivi</i> / Autocollants de segnalisation / <i>Selbstklebeschilder</i> / Tarjetas adhesivas (FIGURE 15)	page 34-35
Fixed battery truck / <i>Carrellino estrazione batteria fisso</i> / Chariot pour extraction batterie fixe / <i>Schlitten zur batterieausnahme standfest</i> / Carro extracción batería fijo (FIGURE 16).....	page 36-37
Double battery truck (option) / <i>Carrellino estrazione batteria doppio (optional)</i> / Chariot pour extraction batterie double (optionnel) / <i>Schlitten zur batterieausnahme (wahlfrei)</i> / Carro extracción batería doble (opcional) (FIGURE 17)	page 38-39
Power cables diagram / <i>Schema collegamenti cavi di potenza</i> / Diagramme liaison cable de puissance / <i>Elektrischeanlageplan</i> / Esquema conexion cable de potencia (FIGURE 18)	page 40-41
Sheath diagram / <i>Schema collegamenti guaine</i> / Diagramme liaison gaines / <i>Mantelanlageplan</i> / Esquema conexion vaina (FIGURE 19)	page 42-43
Electronic diagram / <i>Schema elettronico</i> / Diagramme électronique / <i>Elektronikschaltplan</i> / Esquema electrónico (FIGURE 20)	page 44-45
Console adapter / <i>Adattatore per consolle</i> / Adaptateur pour console / <i>Adapteur für konsolle</i> / Adaptador pro consola (FIGURE 21)	page 46-47

Connectors, contacts, tools / <i>Contatti, connettori, utensili</i> / Connecteurs, contacts, outils / <i>Konnektors, kontakts, werkzeug</i> / Contacto, conector, utensilio (FIGURE 22)	<i>page 48-49</i>
Hydraulic diagram / Schema <i>idraulico</i> / Schème Hydraulique / <i>Hydraulikschaltplan</i> / Esquema Hidraulico (FIGURE 23)	<i>page 50-51</i>
General index / <i>Indice generale</i> / Index général / <i>Generalindex</i> / Indice general	<i>page 52-54</i>
Note / <i>Note</i> / Note / <i>Hinweise</i> / Notas	<i>page 55</i>

<https://www.ebooklibonline.com>

Hello dear friend!

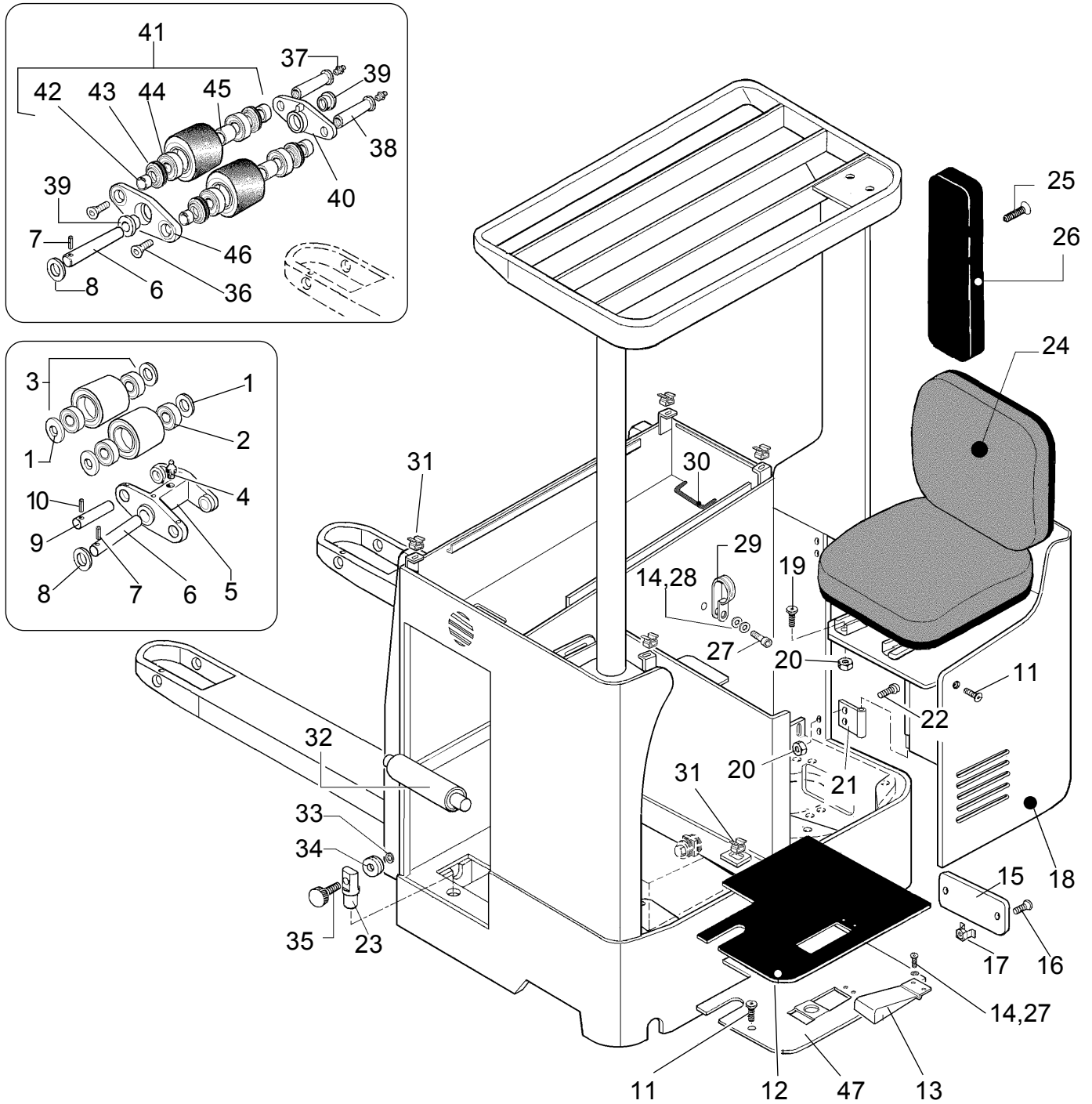
Thank you very much for reading.

Enter the link into your browser.

The full manual is available for immediate download.

<https://www.ebooklibonline.com>

COLD STORE (-30°C)
CELLA FRIGO (-30°C)



T2050068

REF.	PART NO.	Q.TY	DESCRIPTION	DESCRIZIONE	DESIGNATION	BENENNUNG	DENOMINACIONES
1	272065200	8	Washer	Rondella	Rondelle	Scheibe	Arandela
2	272023200	8	Bearing	Cuscinetto	Roulement	Lager	Rodamiento
3	272015300	4	Roller	Rullo	Tambour	Walze	Rodillo
4	272008800	2	Grease fitting	Ingrassatore	Graisser	Schmiernippel	Engrasador
5	580013311	2	Rocker	Bilancere	Culbuteur	Kipphebel	Balancin
6	580013309	2	Pin	Perno	Goujon	Bolzen	Eje
7	449034030	2	Elastic pin	Spina elastica	Goupille elastique	Elastischer stecker	Clavija elástica
8	272006400	4	Washer	Rondella	Rondelle	Scheibe	Arandela
9	272078800	4	Pin	Perno	Goujon	Bolzen	Eje
10	449034082	4	Elastic pin	Spina elastica	Goupille elastique	Elastischer stecker	Clavija elástica
11	580006788	5	Screw	Vite	Vis	Schraube	Tornillo
12	580022520	1	Floor mat	Tappeto	Caoutchouc	Gummiauflage	Cuadrado de goma
13	273057400	1	Pedal	Pedale consenso	Pedal consentement	Pedal Freigabe	Pedal consenso
14	449022018	3	Lock washer	Rosetta elastica	Rondelle souple	Federring	Arandela elástica
15	524143083	1	Inspection door	Portello	Guichet	Tür	Portezuela
16	580018783	2	Screw	Vite	Vis	Schraube	Tornillo
17	277842900	2	Nut	Dado in gabbia	Ecrou	Mutter	Tuerca
18	524144179	1	Door	Portello	Guichet	Tür	Portezuela
19	932728907	4	Screw	Vite	Vis	Schraube	Tornillo
20	449015135	8	Self locking nut	Dado autobloccante	Ecrou de surete	Mutter	Tuerca
21	524144180	2	Hinge	Cerniera	Charnière	Gelenk	Bisagra
22	504235265	4	Screw	Vite	Vis	Schraube	Tornillo
23	273095900	1	Support	Supporto	Support	Lager	Soporte
24	273086600	1	Seat	Sedile	Siège	Sitz	Asiento
*24	277758300	1	Plastic seat (cold store)	Sedile (-30°C)	Siège (-30°C)	Sitz (-30°C)	Asiento (-30°C)
25	504235265	2	Screw	Vite	Vis	Schraube	Tornillo
26	273018300	1	Cushion	Poggiatesta	Appui-coude	Kopfstütze	Reposacabeza
27	932200904	3	Screw	Vite	Vis	Schraube	Tornillo
28	449021003	1	Washer	Rondella	Rondelle	Scheibe	Arandela
29	277592200	1	Cable guide	Passacavo	Sangle	Riemen	Brida
30	580019640	1	Rubber stuf angle	Profilo paraspigoli	Protection	Lager	Protección
31	272342200	8	Nut	Dado in gabbia	Ecrou	Mutter	Tuerca
32	273070600	3	Roller	Rullo	Galet	Walze	Perilla
33	273087700	1	Snap ring	Seeger	Seeger	Seeger Ring	Anillo Seeger
34	273101900	1	Washer	Rondella	Rondelle	Unterlegscheibe	Arandela
35	273073300	1	Screw	Vite	Vis	Schraube	Tornillo
36	580001470	4	Screw	Vite	Vis	Schraube	Tornillo
37	273033400	4	Grease ftg.	Ingrassatore	Graisser	Schmiernippel	Engrasador
38	277548500	4	Axle	Perno	Goujon	Bolzen	Eje
39	273127500	4	Bushing	Boccola	Douille	Buchse	Casquillo
40	277548400	2	Rocker plate	Bilancino svasato	Palonnier	Pendelbecher	Balancin vaciado
41	277548200	4	Polyuretane wheel assy	Rullo in vulkollan	Roue en vulkollan	Adipren-Rolle	Rodillo poliuretano
42	273091000	8	Spacer	Distanziale	Entretoise	Distanzstück	Espaciador
43	273065500	8	Protection washer and seal	Guarnizione	Joint	Dichtung	Junta
44	580024262	8	Bearing	Cuscinetto	Roulement	Lager	Rodamiento
45	273090900	1	Spacer	Distanziale	Entretoise	Distanzstück	Espaciador
46	277548300	2	Bracket-loadwheel	Bilancino passante	Palonnier	Pendeldurchgangsplatte	Balancin pasante
47	580022519	1	Operator platform	Pedana	Platerform	Trittbrett	Plataforma

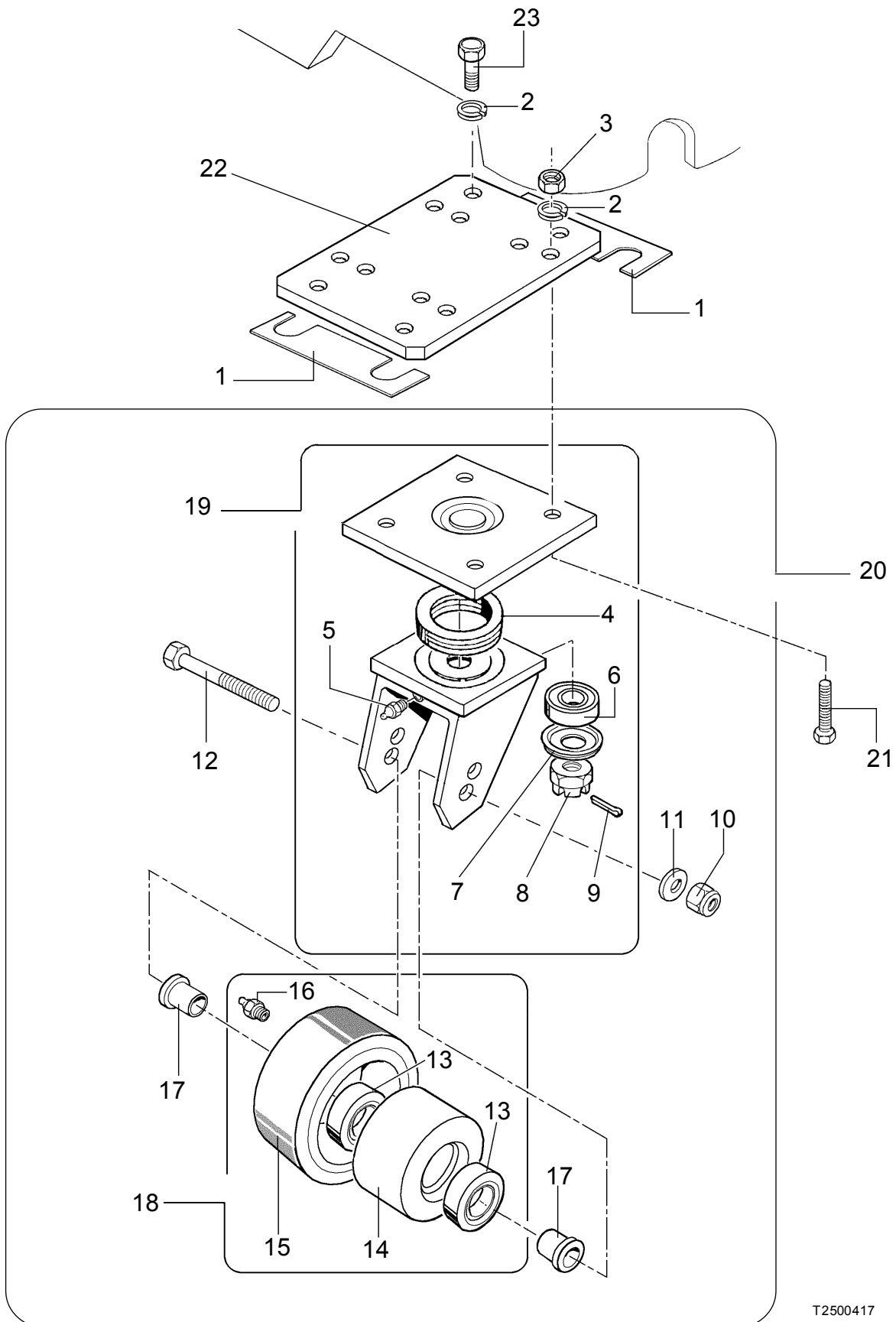
From serial N° / Da matr. /
Du matr. / Ab. seriennummer /
Desde la matr. :

Until serial N° / Fino a matr. /
Jusq' matr. / Bis zur serien-Nr. /
Hasta la matr. :

With the exception of /
Ad esclusione di / À l'exclusion de /
Mit ausnahme von / Excepto :

Including / Compreso / Avec /
Einschließlich / Con :

B855T01501X





Suggest:

For more complete manuals. Please go to the home page.

<https://www.ebooklibonline.com>

If the above button click is invalid. Please download this document first, and then click the above link to download the complete manual.

Thank you so much for reading

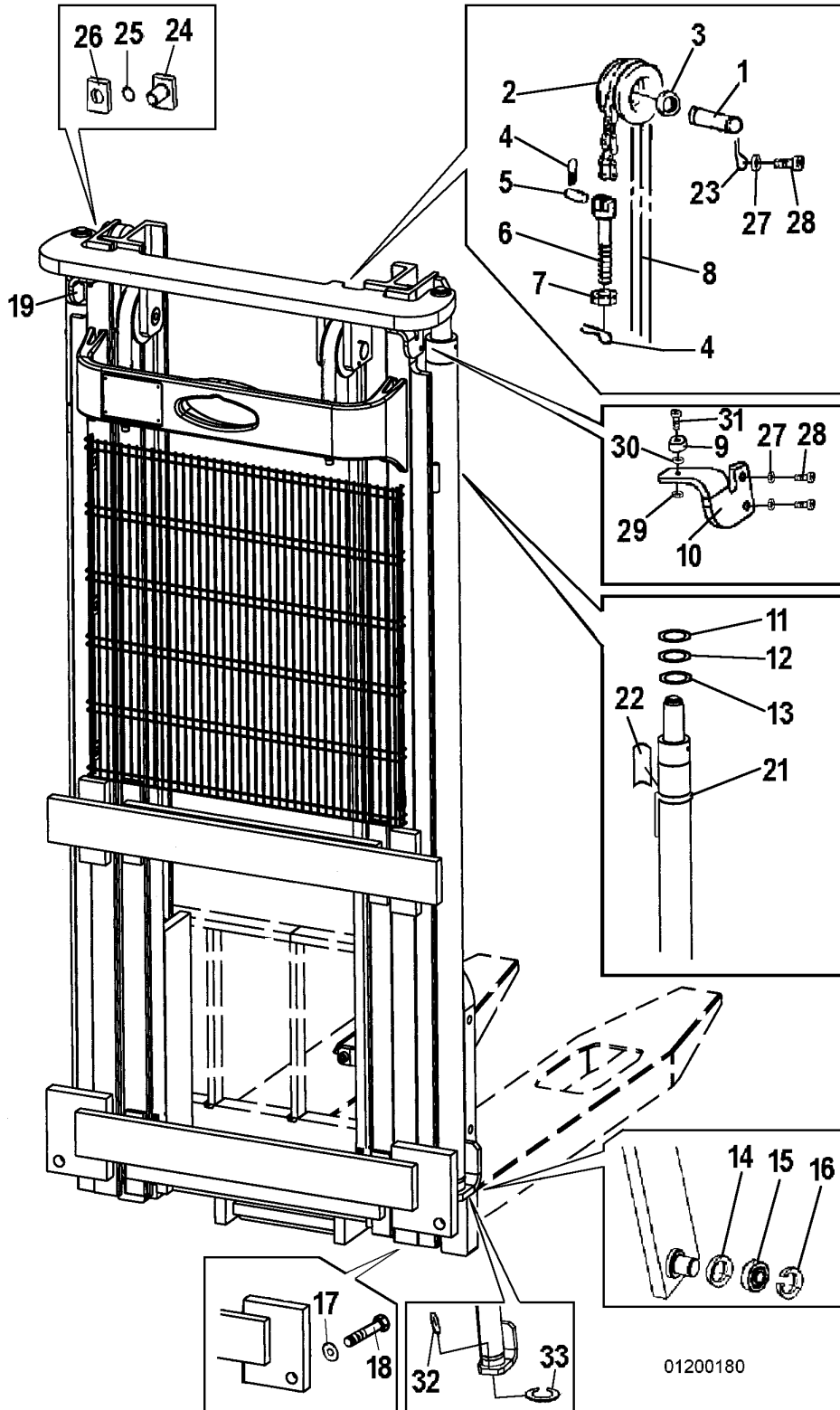
REF.	PART NO.	Q.TY	DESCRIPTION	DESCRIZIONE	DESIGNATION	BENENNUNG	DENOMINACIONES
1	580020255	2	Spacer (1 mm)	Distanziale	Entretoise	Abstandhalter	Separador
1	580020256	2	Spacer (2 mm)	Distanziale	Entretoise	Abstandhalter	Separador
1	580020257	2	Spacer (3 mm)	Distanziale	Entretoise	Abstandhalter	Separador
2	449022017	12	Lock washer	Rosetta elastica	Rondelle élastique	Federring	Arandela elástica
3	449015029	4	Nut	Dado	Écrou	Mutter	Tuerca
4	273005000	1	Bearing	Cuscinetto	Palier	Lager	Cojinete
5	273033400	1	Grease fitting	Ingrassatore	Graisseur	Schmierer	Engrasador
6	277323200	1	Bearing	Cuscinetto	Palier	Lager	Cojinete
7	504575253	1	Dust-gard	Parapolvere	Pare-poussière	Staubschutz	Parapolvero
8	504805714	1	Nut	Dado	Écrou	Mutter	Tuerca
9	015421600	1	Cotter pin	Copiglia	Goupille	Rollenzug	Pasador
10	449015107	1	Self locking nut	Dado autobloc.	Écrou autobloquant	Selbstblockierende Mutter	Tuerca autobloq.
11	449021019	1	Washer	Rondella	Rondelle	Unterlegscheibe	Arandela
12	449001402	1	Screw	Vite	Vis	Schraube	Tomillo
13	273005600	2	Bearing	Cuscinetto	Palier	Lager	Cojinete
14	273105300	1	Wheel hub	Mozzo ruota	Moyeu roue	Radnabe	Buje rueda
15	273061600	1	Polyurethane ring	Anello in adiprene	Bague en adiprène	Adiprenring	Anillo de adipreno
16	273033400	1	Grease fitting	Ingrassatore	Graisseur	Schmierer	Engrasador
17	273091200	2	Spacer	Distanziale	Entretoise	Abstandhalter	Separador
18	273062400	1	Polyurethane wheel ass'y	Ass. ruota in adiprene	Ensemble roue en adiprène	Achse des Adiprenrads	Eje rueda de adipreno
19	273096000	1	Support ass'y	Ass. supporto	Ensemble support	Halterachse	Eje soporte
20	580019512	1	Support & wheel ass'y	Ass. supporto+ruota	Ens. support+roue	Satz Halterung+rad	Eje soporte+rueda
21	449001004	4	Screw	Vite	Vis	Schraube	Tomillo
22	580020254	1	Plate	Piatto	Plaque	Platte	Placa
23	449001058	4	Screw	Vite	Vis	Schraube	Tomillo

 From serial N° / *Da matr.* /
 Du matr. / *Ab. seriennummer* /
 Desde la matr. :

 Until serial N° / *Fino a matr.* /
 Jusq' matr. / *Bis zur serien-Nr.* /
 Hasta la matr. :

 With the exception of /
Ad esclusione di / À l'exclusion de /
Mit ausnahme von / Excepto :

 Including / *Compreso / Avec /*
Einschließlich / Con :
B855T01501X



01200180

<https://www.ebooklibonline.com>

Hello dear friend!

Thank you very much for reading.

Enter the link into your browser.

The full manual is available for immediate download.

<https://www.ebooklibonline.com>