

# Yale

## PARTS MANUAL

---

**GLP 030 AF, GLP 040 AF, GP 030 AF,  
GP 040 AF  
(B810)**



YP990096

---

# Yale

**SECTIONS**

<b>1</b>	<b>GENERAL TRUCK</b>
<b>2</b>	<b>ENGINE ASSEMBLY</b>
<b>3</b>	<b>EXHAUST SYSTEM</b>
<b>4</b>	<b>COOLING SYSTEM</b>
<b>5</b>	<b>FUEL SYSTEM</b>
<b>6</b>	<b>ELECTRICAL SYSTEM</b>
<b>7</b>	<b>TRANSMISSION</b>
<b>8</b>	<b>DRIVE AXLE</b>
<b>9</b>	<b>STEERING SYSTEM</b>
<b>10</b>	<b>BRAKE SYSTEM</b>
<b>11</b>	<b>HYDRAULIC SYSTEM</b>
<b>12</b>	<b>LIFTING MECHANISM</b>
<b>13</b>	<b>ATTACHMENTS AND HEADER HOSE GROUP</b>
<b>14</b>	<b>OPTIONS</b>
<b>15</b>	<b>FIELD CONVERSION KITS</b>
<b>16</b>	<b>NUMERICAL INDEX</b>

ALPHABETICAL INDEX

DESCRIPTION	PAGE NO.
<b>A</b>	
ABBREVIATIONS QUICK REFERENCE SHEET .....	vi
AIR FILTER	
GASOLINE.....	5-22
LPG.....	5-24
ALPHABETICAL INDEX.....	i
ALTERNATOR .....	6-6
TYPE GS AND LPS.....	6-8
AUDIBLE ALARM.....	14-6
AUXILIARY TUBE EXTENSION KIT .....	15-3
<b>B</b>	
BACK BUZZER .....	15-3
BATTERY.....	6-24
BRAKE	
LEFT HAND AND RIGHT HAND.....	10-4
BRAKE LINES.....	10-6
BRAKE PEDAL LINKAGE .....	10-2
<b>C</b>	
CAMSHAFT AND VALVES.....	2-8
CARBURETOR	
GASOLINE.....	5-18
LPG	
CLOSED LOOP.....	5-14
OPEN LOOP .....	5-10
CARRIAGE	
SIX ROLLER	
THREE STAGE FULL FREE-LIFT .....	12-32
TWO STAGE FULL FREE-LIFT .....	12-48
TWO STAGE LIMITED FREE-LIFT .....	12-12
CONTROL VALVE .....	7-10
FOUR FUNCTION	
SINGLE RELIEF WITH OVER LOAD RELIEF VALVE .....	11-20
THREE FUNCTION .....	11-16
COOLING .....	4-2
COUNTERWEIGHT .....	1-8
CRANKSHAFT AND PISTONS.....	2-6
CYLINDER BLOCK.....	2-2
CYLINDER HEAD .....	2-4
<b>D</b>	
DIFFERENTIAL.....	7-8
DIRECTIONAL CONTROL PEDAL .....	5-36
DIRECTIONAL CONTROL PEDAL LINKAGE.....	5-34
DISTRIBUTOR .....	6-4
DRIVE AND TURN LIGHTS.....	14-4

**<https://www.ebooklibonline.com>**

Hello dear friend!

Thank you very much for reading.

Enter the link into your browser.

The full manual is available for immediate download.

**<https://www.ebooklibonline.com>**

GENERAL INFORMATION

DESCRIPTION	PAGE NO.
<b>D (continued)</b>	
DRIVE AXLE .....	8-2
DRIVE TIRE AND FENDER .....	15-2
DRIVE WHEEL AND TIRE ASSEMBLIES	
INTERMEDIATE TREAD .....	8-6
STANDARD TREAD.....	8-4
STUDDED RIM .....	8-10
WIDE TREAD	
GP/GLP 030 AF .....	8-8
<b>E</b>	
ELECTRICAL .....	6-2
COWL .....	6-18
GASOLINE AND LPG.....	6-12
TYPE GS AND LPS.....	6-16
END PLATE ASSEMBLY .....	7-18
ENGINE COVER AND SIDE DOORS.....	1-6
ENGINE FUEL	
GASOLINE.....	5-26
ENGINE MOUNT.....	2-14
EXHAUST	
LOW EMISSIONS.....	3-6
STANDARD.....	3-4
TYPES GS AND LPS.....	3-8
<b>F</b>	
FLYWHEEL.....	2-16
FORK.....	1-20
FRAME AND FLOOR PLATES.....	1-4
FREE LIFT	
THREE STAGE FULL FREE-LIFT .....	12-24
TWO STAGE FULL FREE-LIFT .....	12-40
FREE-LIFT CYLINDER	
THREE STAGE FULL FREE-LIFT .....	12-30
TWO STAGE FULL FREE-LIFT .....	12-46
FUEL	
LPG.....	5-28
FUEL SYSTEM	
LPG.....	5-6
FUEL TANK	
GASOLINE.....	5-2
LPG.....	5-4
<b>G</b>	
GEAR PUMP .....	7-16
GENERAL TRUCK .....	1-2
GOVERNOR	
GASOLINE AND LPG.....	5-20

DESCRIPTION	PAGE NO.
<b>H</b>	
HOOD LATCH KIT .....	1-10
HOSE TAKE-UP	
THREE STAGE FULL FREE-LIFT	
FOUR FUNCTION.....	13-24
THREE FUNCTION.....	13-20
TWO STAGE FULL FREE-LIFT	
FOUR FUNCTION.....	13-30
THREE FUNCTION.....	13-28
TWO STAGE LIMITED FREE-LIFT	
FOUR FUNCTION.....	13-18
THREE FUNCTION.....	13-16
HOSE TAKE-UP THREE STAGE FULL FREE-LIFT .....	15-7
HOSE TAKE-UP TWO STAGE FULL FREE-LIFT .....	15-8
HOSE TAKE-UP TWO STAGE LIMITED FREE-LIFT .....	15-6
HOW TO FIND THE DESIRED PART NUMBER.....	viii
HOW TO USE THE ILLUSTRATED PARTS MANUAL .....	viii
HYDRAULIC CLUTCH .....	7-6
HYDRAULIC CONTROL VALVE .....	15-2
HYDRAULIC PUMP.....	11-5
HYDRAULICS .....	11-2
<b>I</b>	
IDENTIFICATION OF ATTACHMENT AND SIDE-SHIFT CARRIAGE SERIAL NUMBERS.....	xi
IDENTIFICATION OF MAST SERIAL NUMBER .....	x
IDENTIFICATION OF TRUCK SERIAL NUMBER.....	ix
INNER MAST	
THREE STAGE FULL FREE-LIFT .....	12-18
TWO STAGE FULL FREE-LIFT .....	12-36
TWO STAGE LIMITED FREE-LIFT.....	12-4
INSTRUMENT CLUSTER .....	6-22
INTEGRAL SIDE-SHIFT CARRIAGE	
THREE STAGE FULL FREE-LIFT .....	13-10
TWO STAGE FULL FREE-LIFT .....	13-8
TWO STAGE LIMITED FREE-LIFT.....	13-6
INTEGRAL SIDE-SHIFT CYLINDER .....	13-12
INTEGRAL SIDE-SHIFT HYDRAULIC HOSES	
TWO STAGE FULL FREE-LIFT	
THREE STAGE FULL FREE-LIFT .....	13-15
TWO STAGE LIMITED FREE-LIFT.....	13-14
INTERMEDIATE	
THREE STAGE FULL FREE-LIFT .....	12-16
<b>L</b>	
LABEL AND PLATE LOCATION.....	1-17
LIFT	
TWO STAGE LIMITED FREE-LIFT.....	12-6
LIFT CYLINDER	
LEFT HAND	
TWO STAGE LIMITED FREE-LIFT .....	12-8

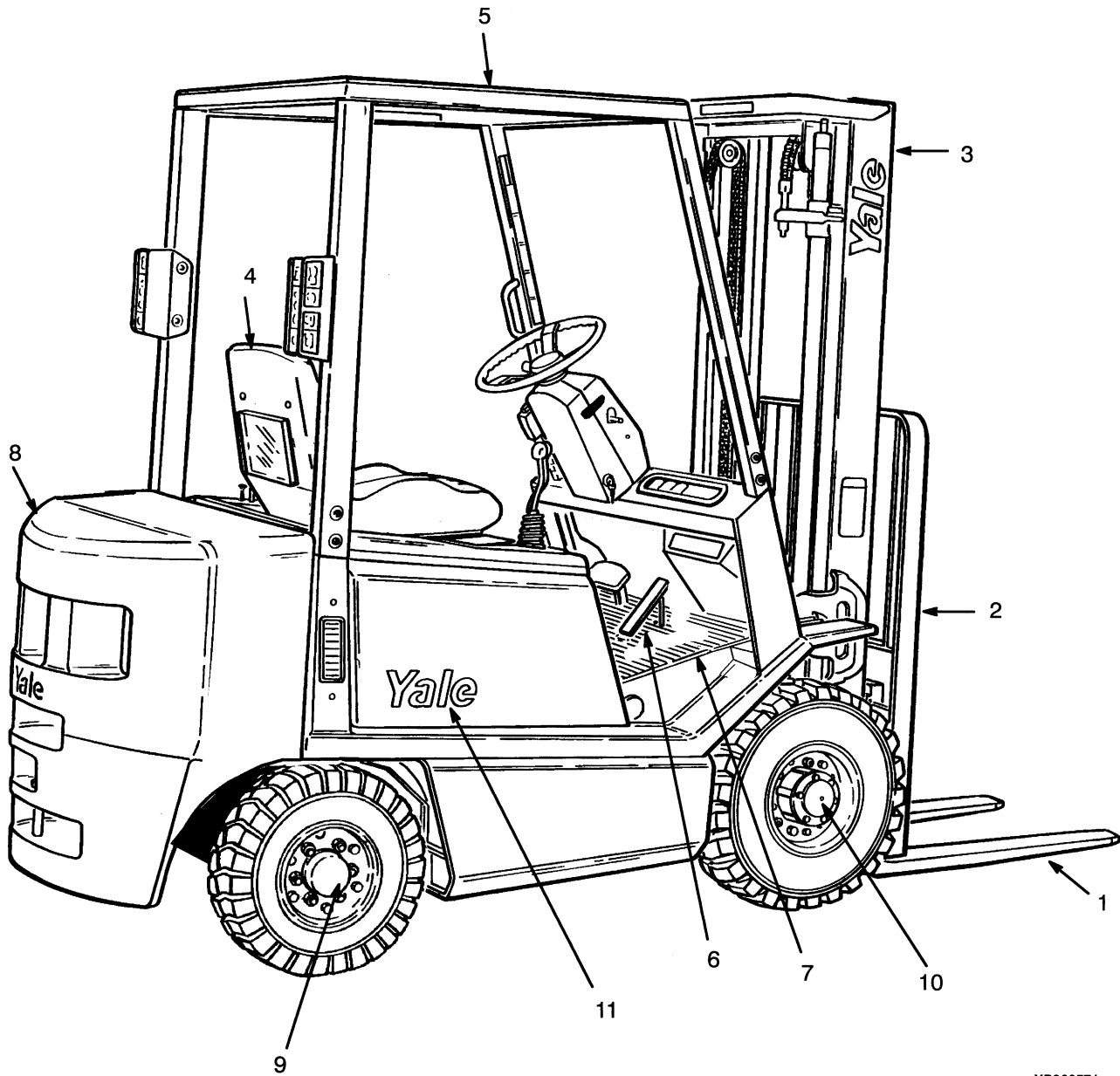
**GENERAL INFORMATION**

DESCRIPTION	PAGE NO.
<b>L (continued)</b>	
RIGHT HAND	
TWO STAGE LIMITED FREE-LIFT .....	12-10
LIFTING EYES .....	14-2
LIGHT .....	15-2
LOAD BACKREST EXTENSION.....	1-19
<b>M</b>	
MAIN CYLINDER	
LEFT HAND	
THREE STAGE FULL FREE-LIFT .....	12-26
TWO STAGE FULL FREE-LIFT .....	12-42
RIGHT HAND	
THREE STAGE FULL FREE-LIFT .....	12-28
TWO STAGE FULL FREE-LIFT .....	12-44
MAIN LIFT	
THREE STAGE FULL FREE-LIFT .....	12-20
TWO STAGE FULL FREE-LIFT .....	12-38
MANIFOLDS.....	3-2
MAST INSTALLATION.....	11-8
MASTER CYLINDER .....	10-8
MASTER PART SHEET CROSS-REFERENCE .....	xiii
MIRROR MOUNT .....	15-3
MISCELLANEOUS .....	15-4
<b>O</b>	
OIL PUMP AND FILTER.....	2-12
OUTER MAST	
THREE STAGE FULL FREE-LIFT .....	12-14
TWO STAGE FULL FREE-LIFT .....	12-34
TWO STAGE LIMITED FREE-LIFT.....	12-2
OVERHEAD GUARD.....	1-12
<b>P</b>	
PARK BRAKE LEVER .....	10-10
PUMP DRIVE SHAFT .....	8-12
<b>R</b>	
RADIATOR AND HOSES .....	4-4
REGULATOR	
CLOSED LOOP .....	5-16
OPEN LOOP.....	5-12
RIM AND FENDER.....	15-3
<b>S</b>	
SEAT	
FULL SUSPENSION	
SHEET 1 OF 2 .....	1-24

DESCRIPTION	PAGE NO.
<b>S</b> (continued)	
SHEET 2 OF 2 .....	1-28
NON-SUSPENSION .....	1-22
SHIFT LEVER .....	7-20
SIDE-SHIFT CARRIAGE .....	13-2
SIDE-SHIFT CYLINDER .....	13-4
SOLENOID VALVE .....	7-12
SOUND ABATEMENT	
FRAME .....	1-14
STARTER	
GASOLINE AND LPG .....	6-10
STEERING AXLE .....	9-4
STEERING COLUMN .....	9-2
STEERING CONTROL UNIT .....	9-6
STEERING CYLINDER .....	9-8
<b>T</b>	
TAIL LIGHTS .....	6-26
THROTTLE LINKAGE	
GASOLINE .....	5-30
LPG .....	5-32
TILT CYLINDER .....	11-6
TILT MAST 5° BACK .....	15-4
TIMING GEAR COVER AND OIL PAN .....	2-10
TIRE AND WHEEL	
STANDARD TREAD	
DRIVE WHEEL WITH STUDED RIM .....	9-12
STEER WHEEL .....	9-10
TRANSMISSION GEARS .....	7-4
TRANSMISSION HOUSING .....	7-2
TRANSMISSION HYDRAULIC LINES .....	7-14
<b>V</b>	
VALVE ATTACHING PARTS	
FOUR FUNCTION .....	11-14
THREE FUNCTION .....	11-10
<b>W</b>	
WIRE HARNESS	
COWL .....	6-32
ENGINE	
GASOLINE AND LPG .....	6-27
GASOLINE AND LPG WITH LOW EMISSIONS .....	6-28
LPG WITH LOW EMISSIONS TYPE "S" .....	6-30
SEAT SWITCH .....	6-34
TAIL LIGHT .....	6-25

**SECTION 1  
GENERAL TRUCK**

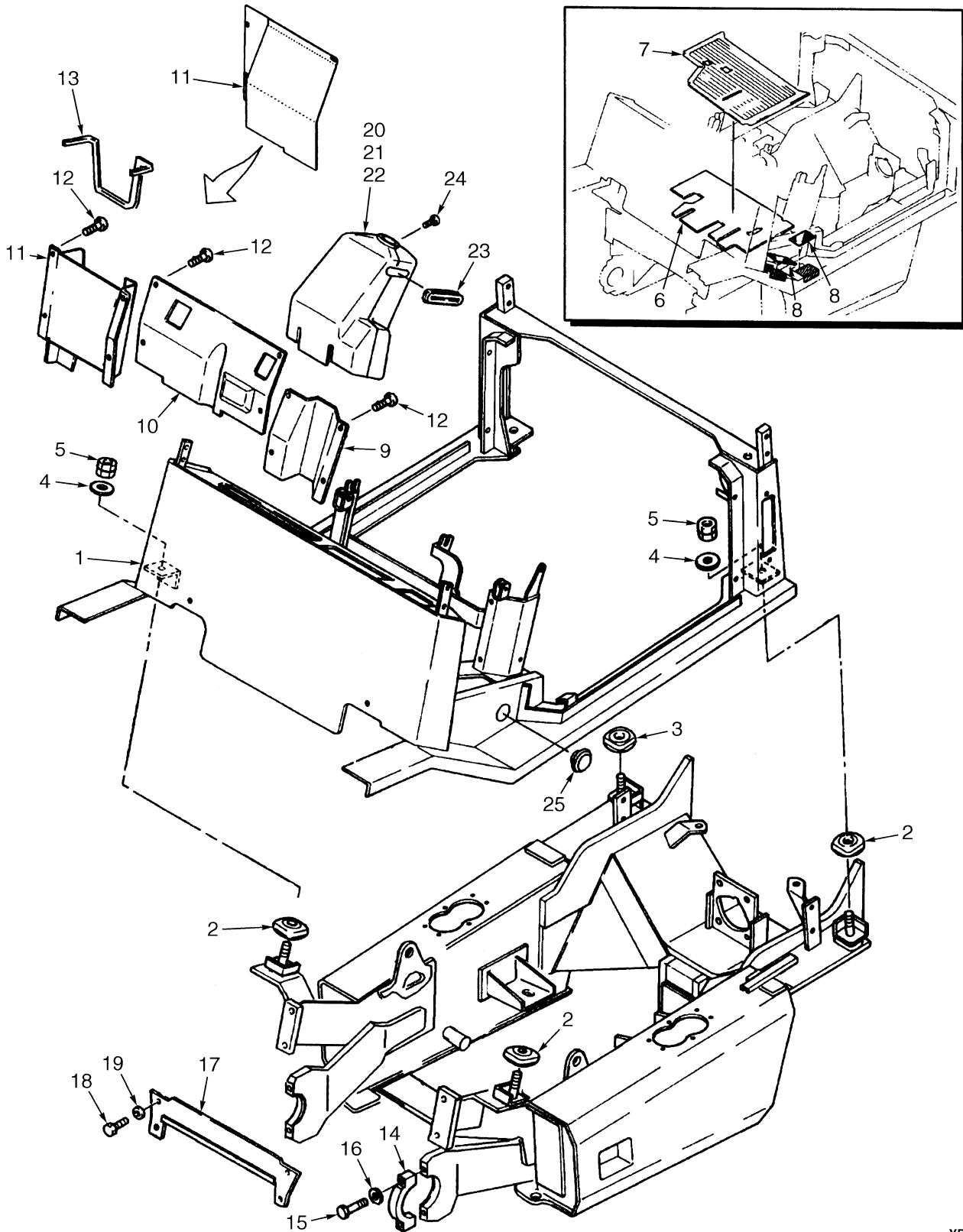
DESCRIPTION	PAGE
COUNTERWEIGHT .....	1-8
ENGINE COVER AND SIDE DOORS .....	1-6
FORK.....	1-20
FRAME AND FLOOR PLATES.....	1-4
GENERAL TRUCK .....	1-2
HOOD LATCH KIT .....	1-10
LABEL AND PLATE LOCATION.....	1-17
LOAD BACKREST EXTENSION.....	1-19
OVERHEAD GUARD.....	1-12
SEAT	
FULL SUSPENSION	
SHEET 1 OF 2 .....	1-24
SHEET 2 OF 2 .....	1-28
NON-SUSPENSION .....	1-22
SOUND ABATEMENT	
FRAME .....	1-14



YP260571

ITEM	PART NO.	DESCRIPTION	QTY
1	.....	Load Fork (☞ P12154) .....	2
2	.....	Load Backrest (☞ P12153) .....	1
3	.....	Mast-Two Stage Limited Free-Lift (☞ P12459) .....	1
3	.....	Mast-Two Stage Full Free-Lift (☞ P12472) .....	1
3	.....	Mast-Three Stage Full Free-Lift (☞ P12464) .....	1
4	.....	Seat (Operator) (☞ P12155, P12156, P12156) .....	1
5	.....	Overhead Guard (☞ P12149) .....	1
6	.....	Accelerator Pedal (☞ P12417, P12418) .....	1
7	.....	Floor Plates (☞ P12145) .....	1
8	.....	Counterweight (☞ P12147) .....	1
9	.....	Steer Axle (☞ P12448) .....	1
10	.....	Drive Axle Assembly (☞ P12437) .....	1
11	.....	Label and Plate Location (☞ P12150) .....	AR

FRAME AND FLOOR PLATES



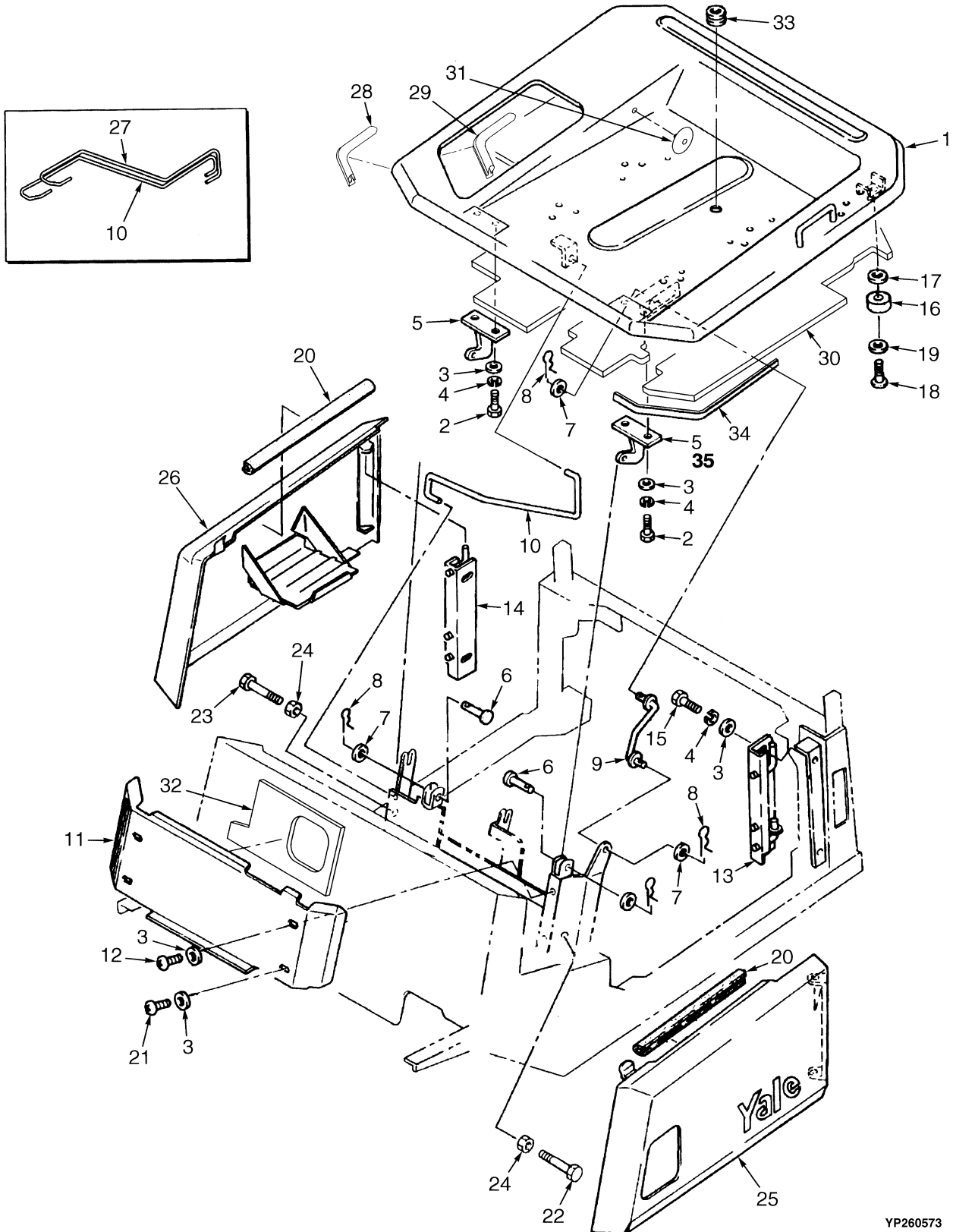
FRAME AND FLOOR PLATES

ITEM	PART NO.	DESCRIPTION	QTY
1	524141602	Module (Upper) (Standard Tread).....	1
1	524141605	Module (Upper) (Intermediate Tread) .....	1
1	524141606	Module (Upper) (Wide Tread) .....	1
2	916703300	Isulator.....	3
3	916704300	Isulator.....	1
4	909903402	Washer .....	4
5	907968405	Nut .....	4
6	<b>c</b> 923167401	Plate .....	1
6	<b>a</b> 926148400	Floorplate .....	1
7	<b>c</b> 752171700	Floormat .....	1
7	<b>a</b> 917936600	Floormat .....	1
8	909472304	Floormat .....	4
9	910279600	Cover (LH) .....	1
10	912394600	Cover .....	1
11	<b>c</b> 919970401	Cover (RH) .....	1
11	<b>a</b> 925730400	Cover (RH) .....	1
12	904184103	Screw.....	6
13	912291315	Trim.....	1
14	919920400	Cap .....	2
15	449001389	Capscrew.....	2
16	940101908	Washer .....	2
17	920127400	Plate .....	1
18	449001179	Capscrew.....	4
19	502566903	Washer .....	4
20	<b>ab</b> 915483402	Cover Assembly (Without Turn Signals) .....	1
20	909950602	Cover (Rear).....	1
20	909951602	Cover (Front) .....	1
21	<b>a</b> 915483403	Cover Assembly (With Turn Signals) .....	1
21	909950603	Cover (Rear).....	1
21	909951603	Cover (Front) .....	1
22	<b>b</b> 915483401	Cover Assembly (With Turn Signals) .....	1
22	909950601	Cover (Rear).....	1
22	909951601	Cover (Front) .....	1
23	<b>c</b> 921698300	Boot .....	1
23	<b>a</b> 934592300	Boot .....	1
24	909904403	Screw.....	5
25	920600400	Cap (Noise Reduction) .....	2

**FOOTNOTES:**

- a** Foot Directional Control Pedal
- b** Forward and Reverse Lever
- c** Shift Lever

ENGINE COVER AND SIDE DOORS



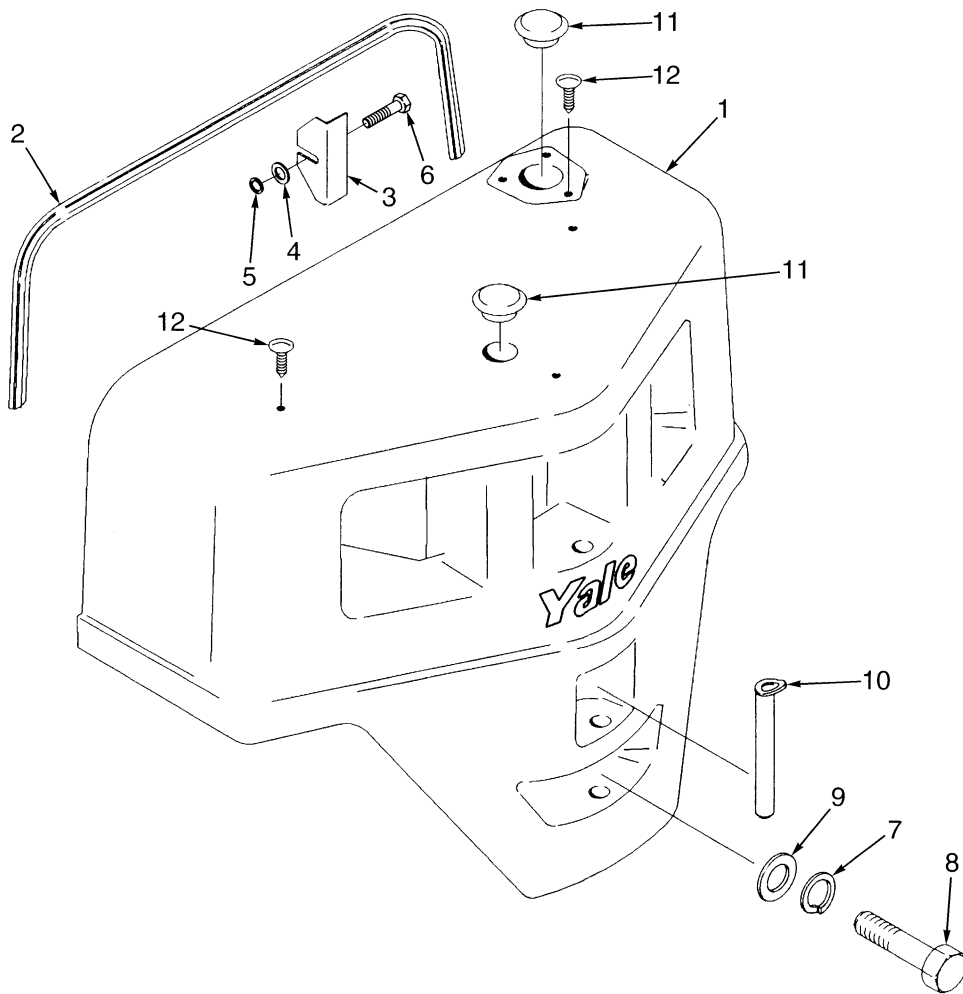
YP260573

ENGINE COVER AND SIDE DOORS

ITEM	PART NO.	DESCRIPTION	QTY
1	908594741	Cover .....	1
2	449001013	Capscrew.....	4
3	023604600	Washer .....	12
4	449022016	Lockwasher .....	8
5	<b>ab</b> 922307300	Hinge .....	1
5	<b>ac</b> 922307300	Hinge .....	2
6	912326300	Pin .....	2
7	449021006	Washer .....	4
8	965801908	Cotter Pin .....	4
9	922134300	Support.....	1
10	922650402	Spring .....	1
11	909835611	Plate .....	1
12	932729901	Capscrew.....	1
13	915340401	Hinge (LH) .....	1
14	915340402	Hinge (RH).....	1
15	449001415	Capscrew.....	4
16	917426300	Cushion (Rubber) .....	2
17	502398907	Washer .....	AR
18	932729907	Capscrew.....	2
19	449021001	Washer .....	2
20	912291312	Trim.....	2
21	932729903	Capscrew.....	3
22	449001073	Capscrew.....	1
23	909910404	Bolt .....	1
24	449015014	Nut .....	2
25	911833613	Door (LH) (GAS).....	1
25	911833614	Door (LH) (LPG) .....	1
26	912685612	Door (RH) .....	1
27	922650401	Spring (Low Rider Seat) .....	1
28	923179401	Strip .....	1
29	923179404	Strip .....	1
30	905030703	Pad .....	1
31	916971301	Clip (Liner) .....	8
32	925992301	Pad (Front Plate) .....	1
33	014195600	Grommet.....	1
34	<b>a</b> 919661401	Moulding.....	1
35	<b>ab</b> 524148688	Hinge .....	1

**FOOTNOTES:**

- a** Engine Cover
- b** ⇒ S/N PENDING PER ECN 73723-03
- c** S/N PENDING PER ECN 73723-03 ⇒

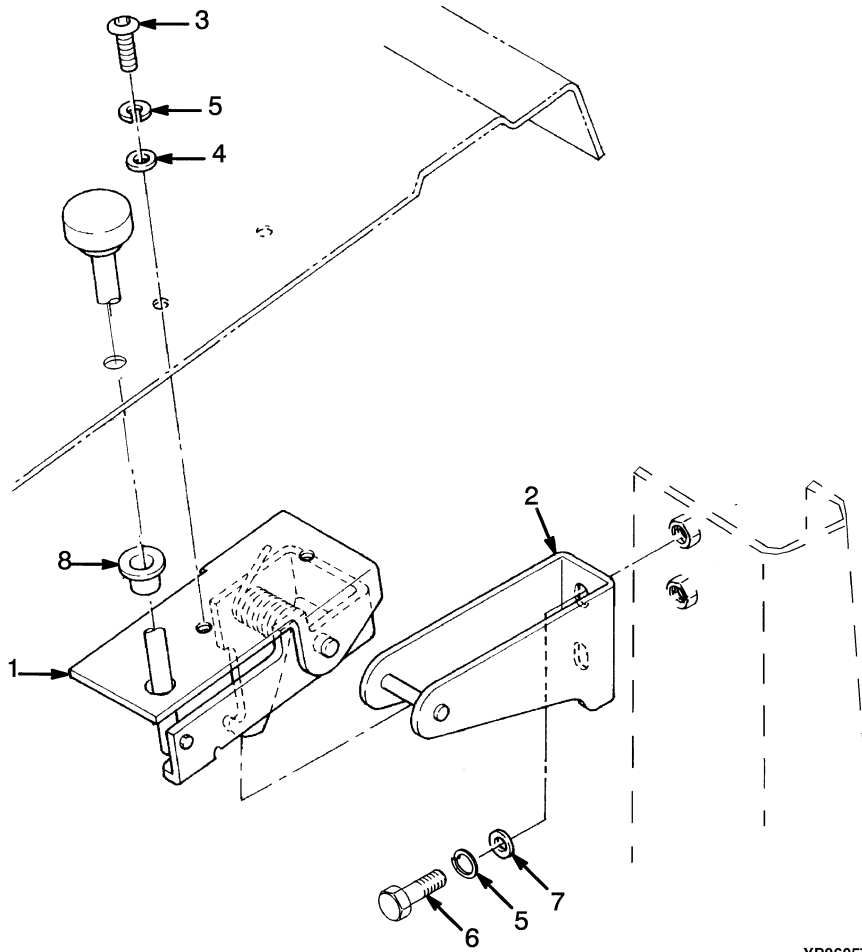


YP260574

COUNTERWEIGHT

ITEM	PART NO.	DESCRIPTION	QTY
1	905319700	Counterweight (GP/GLP 030 AF) .....	1
1	905321700	Counterweight (GP/GLP 040 AF) .....	1
2	900008252	Seal .....	1
3	922410300	Shim .....	AR
4	504226242	Washer .....	4
5	449022016	Lockwasher .....	4
6	449001415	Capscrew.....	4
7	955400911	Lockwasher .....	2
8	449001405	Capscrew.....	2
9	910590100	Washer .....	2
10	924230300	Pin .....	1
11	917595300	Cap .....	1
12	504240785	Fastener .....	3

HOOD LATCH KIT

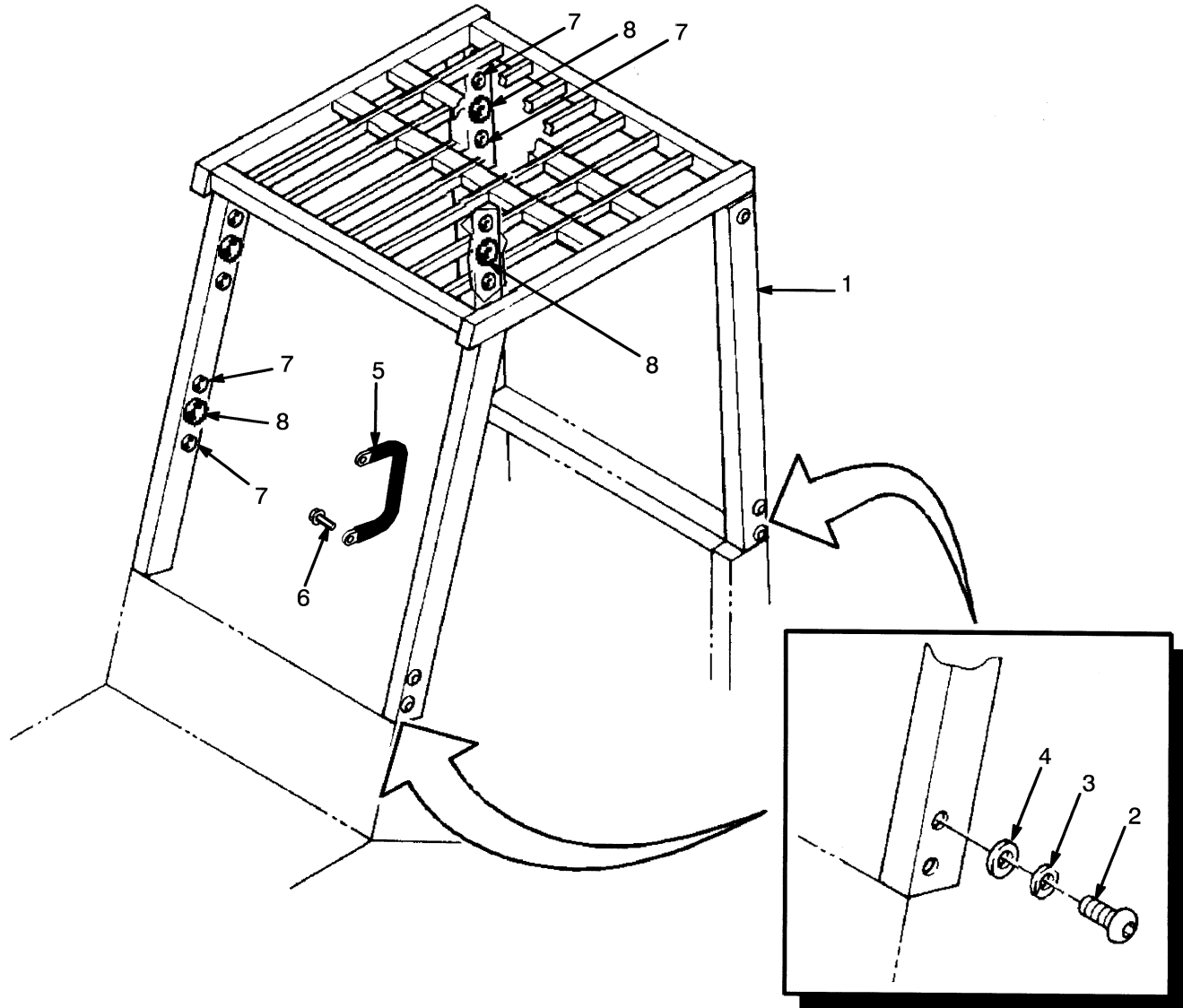


YP260575

ITEM	PART NO.	DESCRIPTION	QTY
1	923532400	Arm.....	1
2	923533400	Hook Assembly.....	1
3	932729907	Capscrew.....	2
4	023604600	Washer .....	2
5	449022016	Lockwasher .....	4
6	449001013	Capscrew.....	2
7	502566901	Washer .....	2
8	912630306	Bushing .....	1



OVERHEAD GUARD



YP260576



**Suggest:**

**For more complete manuals. Please go to the home page.**

**<https://www.ebooklibonline.com>**

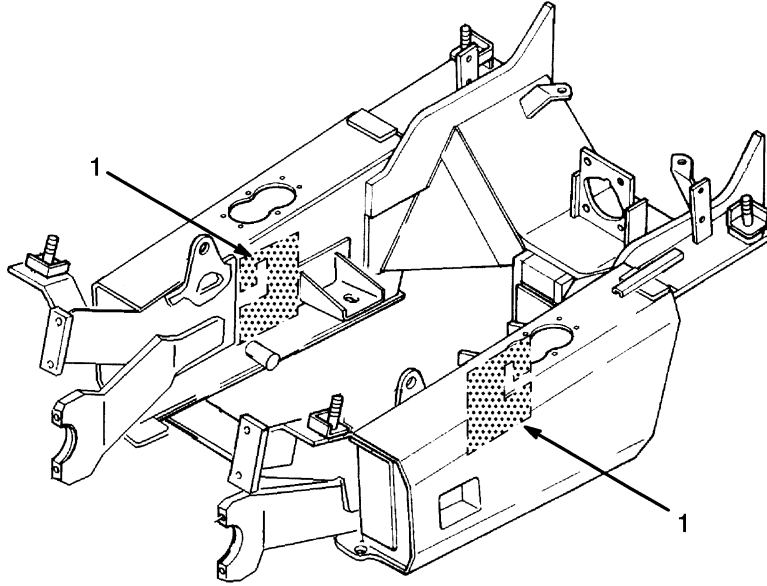
**If the above button click is invalid. Please download this document first, and then click the above link to download the complete manual.**

**Thank you so much for reading**

OVERHEAD GUARD

ITEM	PART NO.	DESCRIPTION	QTY
1	524145332	Overhead Guard (Raised Height) .....	1
1	914933600	Overhead Guard.....	1
1	925991301	Pad .....	2
2	932731905	Bolt .....	8
3	449022017	Lockwasher .....	8
4	904310409	Washer .....	8
5	900001242	Handle .....	1
6	504060774	Screw.....	2
7	504241782	Plug .....	12
8	504241783	Plug .....	5

**SOUND ABATEMENT  
(FRAME)**



YP260577

ITEM	PART NO.	DESCRIPTION	QTY
1	925991301	Pad .....	2

**<https://www.ebooklibonline.com>**

Hello dear friend!

Thank you very much for reading.

Enter the link into your browser.

The full manual is available for immediate download.

**<https://www.ebooklibonline.com>**