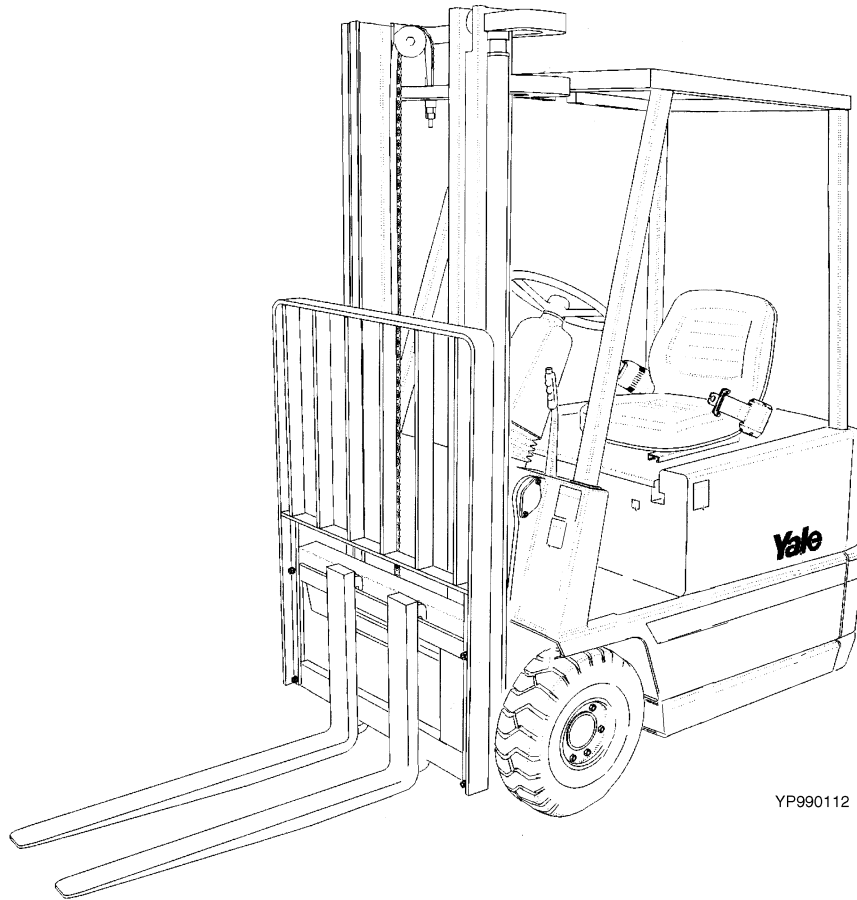


## ERP10-15RCF

(A888)



YP990112

<b>1</b>	<b>GENERAL TRUCK</b>	
<b>2</b>	<b>ELECTRICAL SYSTEM</b>	
<b>3</b>	<b>DRIVE UNIT</b>	
<b>4</b>	<b>STEERING SYSTEM</b>	
<b>5</b>	<b>BRAKE SYSTEM</b>	
<b>6</b>	<b>HYDRAULIC SYSTEM</b>	
<b>7</b>	<b>MAST-TWO STAGE LIMITED FREE-LIFT</b>	
<b>8</b>	<b>MAST-THREE STAGE FULL FREE-LIFT</b>	
<b>9</b>	<b>MAST-TWO STAGE FULL FREE-LIFT</b>	
<b>10</b>	<b>FORKS, LOAD BACKREST, AND MAST INSTALLATION</b>	
<b>11</b>	<b>NUMERICAL INDEX</b>	

ALPHABETICAL INDEX

DESCRIPTION	PAGE NO.
<b>A</b>	
ABBREVIATIONS QUICK REFERENCE SHEET .....	v
ACCELERATOR .....	5.14
ACCELERATOR PEDAL.....	5.16
ALPHABETICAL INDEX.....	i
<b>B</b>	
BRAKE ASSEMBLY	
⇒S/N A888A02460A .....	5.2
S/N A888A02461A⇒ .....	5.6
BRAKE LINES.....	5.4
<b>C</b>	
CARRIAGE	
THREE STAGE FULL FREE-LIFT .....	8.18
TWO STAGE FULL FREE-LIFT .....	9.16
TWO STAGE LIMITED FREE-LIFT.....	7.10
CONTACTOR	
BY-PASS	
⇒S/N A888A-1964Y .....	2.18
FORWARD/REVERSE	
⇒S/N A888A-1964Y .....	2.14
REGENERATIVE BRAKING	
⇒S/N A888A-1964Y .....	2.20
CONTACTOR PANEL	
⇒S/N A888A-1964Y .....	2.12
CONTROL VALVE .....	6.10
CONTROL VALVE LEVER AND ATTACHING PARTS .....	6.6
<b>D</b>	
DRIVE TIRE AND WHEEL	
STEERING.....	3.12
DRIVE UNIT AND MOTOR ASSEMBLY.....	3.2
<b>E</b>	
ELECTRICAL SYSTEM	
⇒S/N A888A-1964Y .....	2.2
S/N A888A-1965Y⇒.....	2.4
<b>F</b>	
FORK.....	10.2
FRAME AND COUNTERWEIGHT .....	1.4
FREE-LIFT	
1280 MM	
TWO STAGE FULL FREE-LIFT .....	9.8
THREE STAGE FULL FREE-LIFT .....	8.10
FREE-LIFT CYLINDER	

**<https://www.ebooklibonline.com>**

Hello dear friend!

Thank you very much for reading.

Enter the link into your browser.

The full manual is available for immediate download.

**<https://www.ebooklibonline.com>**

DESCRIPTION	PAGE NO.
<b>F (continued)</b>	
THREE STAGE FULL FREE-LIFT .....	8.16
TWO STAGE FULL FREE-LIFT .....	9.14
<b>H</b>	
HEADER HOSE	
THREE STAGE FULL FREE-LIFT .....	8.22
TWO STAGE FULL FREE-LIFT .....	9.20
TWO STAGE LIMITED FREE-LIFT .....	7.14
HOW TO FIND THE DESIRED PART NUMBER .....	vii
HOW TO USE THE ILLUSTRATED PARTS MANUAL .....	vii
HUB .....	5.12
HYDRAULIC MOTOR	
⇒S/N A888A-1964Y .....	6.14
S/N A888A-1965Y⇒ .....	6.16
HYDRAULIC PUMP .....	6.12
SHEET 1 OF 2 .....	6.18
SHEET 2 OF 2 .....	6.20
HYDRAULIC SYSTEM .....	6.2
<b>I</b>	
IDENTIFICATION OF ATTACHMENT AND SIDE-SHIFT CARRIAGE SERIAL NUMBERS .....	x
IDENTIFICATION OF MAST SERIAL NUMBER .....	ix
IDENTIFICATION OF TRUCK SERIAL NUMBER .....	viii
INNER MAST	
1280 MM	
TWO STAGE FULL FREE-LIFT .....	9.4
THREE STAGE FULL FREE-LIFT .....	8.6
TWO STAGE LIMITED FREE-LIFT .....	7.4
INTEGRAL SIDE-SHIFT ASSEMBLY	
THREE STAGE FULL FREE-LIFT .....	8.20
INTEGRAL SIDE-SHIFT CARRIAGE	
TWO STAGE FULL FREE-LIFT .....	9.18
TWO STAGE LIMITED FREE-LIFT .....	7.12
INTERMEDIATE MAST	
THREE STAGE FULL FREE-LIFT .....	8.4
<b>L</b>	
LABELS .....	1.2
LIFT	
TWO STAGE LIMITED FREE-LIFT .....	7.6
LIFT CYLINDER	
TWO STAGE LIMITED FREE-LIFT .....	7.8
LINE CONTACTOR	
⇒S/N A888A-1964Y .....	2.16
LOAD BACKREST	
INTEGRAL SIDE-SHIFT .....	10.10
LOAD BACKREST EXTENSION .....	10.4

DESCRIPTION	PAGE NO.
<b>M</b>	
MAIN CYLINDER	
LEFT HAND	
TWO STAGE FULL FREE-LIFT .....	9.10
RIGHT HAND	
TWO STAGE FULL FREE-LIFT .....	9.12
THREE STAGE FULL FREE-LIFT .....	8.14
MAIN LIFT	
1280 MM	
TWO STAGE FULL FREE-LIFT .....	9.6
THREE STAGE FULL FREE-LIFT .....	8.8
MASTER CYLINDER .....	5.8
MASTER DRIVE UNIT	
KORDEL	
OPTIONAL .....	3.8
ZF.....	3.4
<b>N</b>	
NON-SUSPENSION SEAT .....	1.8
<b>O</b>	
OUTER MAST	
1280 MM	
TWO STAGE FULL FREE-LIFT .....	9.2
THREE STAGE FULL FREE-LIFT .....	8.2
TWO STAGE LIMITED FREE-LIFT .....	7.2
OVERHEAD GUARD.....	1.14
<b>P</b>	
PARK BRAKE .....	5.10
<b>S</b>	
SEMI-SUSPENSION SEAT .....	1.10
WITH ARM REST .....	1.12
SHIFT LEVER .....	4.4
SIDE-SHIFT CARRIAGE .....	10.6
SIDE-SHIFT CYLINDER .....	10.8
STEERING COLUMN.....	4.2
STEERING HYDRAULIC.....	4.6
STEERING PUMP .....	4.8
STROBE LIGHT .....	1.16
<b>T</b>	
TILT CYLINDER	
⇒S/N A888A-1964Y .....	6.22
S/N A888A-1965Y⇒.....	6.24
TRACTION MOTOR	
⇒S/N A888A-1964Y .....	3.14
S/N A888A-1965Y⇒.....	3.16

---

DESCRIPTION	PAGE NO.
<b>W</b>	
WIRE HARNESS	
MAIN	
S/N A888A-1965Y⇒ .....	2.10
⇒S/N A888A-1965Y .....	2.8

**SECTION 1  
GENERAL TRUCK**

<b>DESCRIPTION</b>	<b>PAGE</b>
FRAME AND COUNTERWEIGHT .....	1.4
LABELS .....	1.2
NON-SUSPENSION SEAT .....	1.8
OVERHEAD GUARD .....	1.14
SEMI-SUSPENSION SEAT .....	1.10
WITH ARM REST .....	1.12
STROBE LIGHT .....	1.16

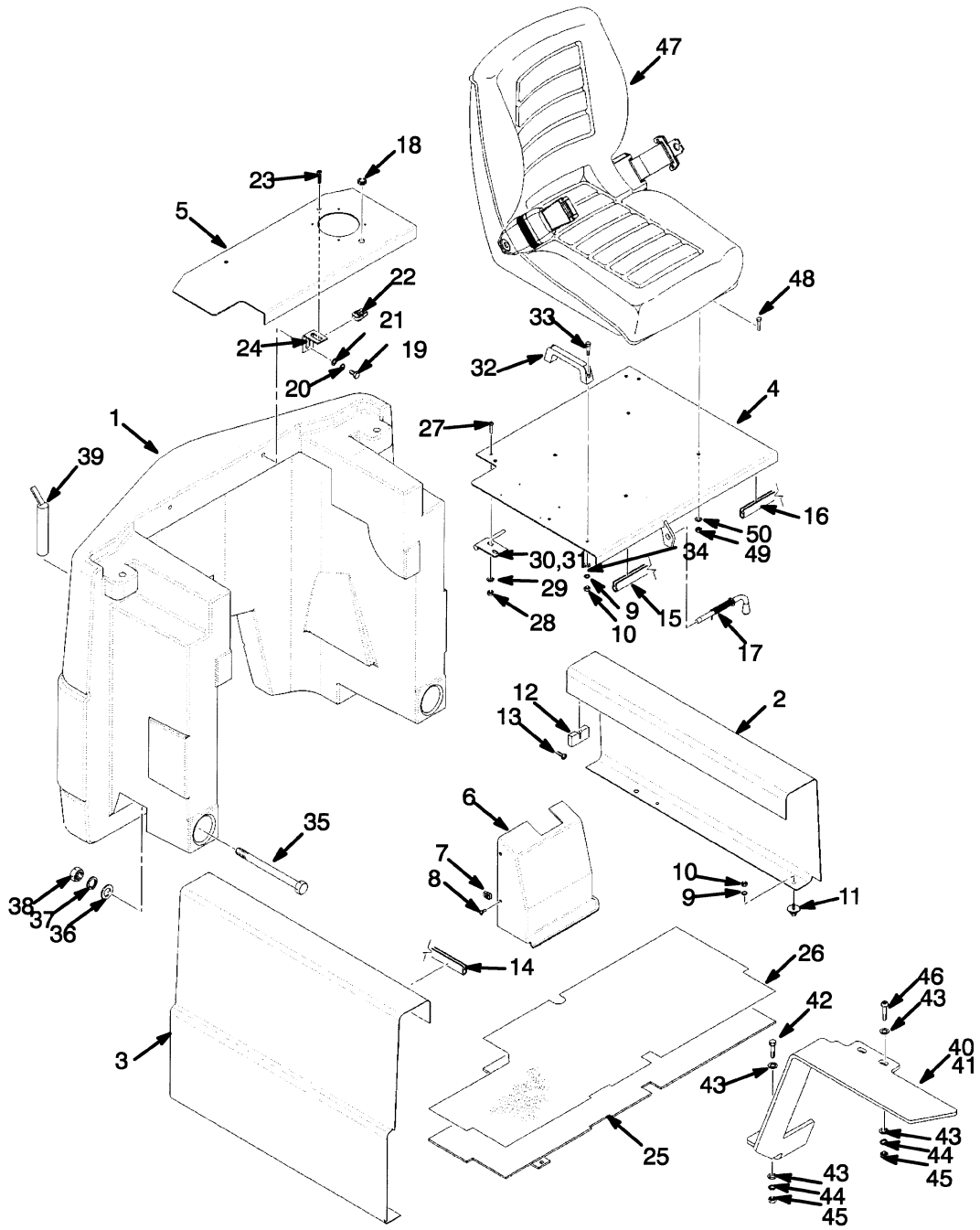


ITEM	PART NO.	DESCRIPTION	QTY
1	505972545	Label (Mast Warning) .....	2
2	580031629	Label (Battery Disconnect) .....	1
3	519798601	Label (Hoist Handle) .....	1
4	519798602	Label (Tilt Handle) .....	1
5	505974557	Label (Pinch Point) .....	2
6	505972545	Label (Mast Warning) .....	1
7	580008064	Cover .....	1
8	504231220	Rivet .....	4
9	<b>a</b> . . . . .	Nameplate .....	1
10	502157207	Label (Yale) .....	2
11	524142943	Strip (RH) .....	1
11	524142944	Strip (LH) .....	1
11	524142945	Strip (Rear) .....	1
12	258193900	Label (Yale) .....	2
13	520045119	Label (Hydraulic Oil Fill) .....	1
14	504955200	Label (Tilt Column) .....	1
15	518806691	Label (Park Brake Warning) .....	1
16	518805660	Label (Operator Warning) .....	1
17	505973524	Label (Operator Restraint) .....	2
18	505972566	Label (No Riders) .....	2
19	519798604	Label (Auxiliary Function - Side-Shift) .....	1
20	504231235	Label (Operator Manual) (UK) .....	1

**FOOTNOTES:**

**a** Contact Dealer for Parts

FRAME AND COUNTERWEIGHT



YP260285



FRAME AND COUNTERWEIGHT

ITEM	PART NO.	DESCRIPTION	QTY
1	524140038	Counterweight (ERP 15 RCF) .....	1
1	524140039	Counterweight (ERP 12 RCF) .....	1
1	524140040	Counterweight (EPR 10 RCF) .....	1
2	504241309	Cover (LH) .....	1
3	504241310	Cover (RH) .....	1
4	<b>a</b> 580014511	Hood .....	1
4	<b>b</b> 524148943	Hood .....	1
5	<b>a</b> 580014512	Hood (Rear) .....	1
5	<b>b</b> 524148944	Hood (Rear) .....	1
6	580014506	Cover (Three Function) .....	1
6	580023107	Cover (Four Function) .....	1
7	504225257	Nut .....	3
8	449007018	Screw .....	3
9	449022018	Lockwasher .....	6
10	449015002	Nut .....	6
11	504238222	Buffer .....	4
12	504238275	Moulding .....	4
13	504238225	Screw .....	8
14	504238295	Edge Trim .....	2
15	504238214	Edge Trim .....	1
16	504238250	Edge Trim .....	1
17	504238213	Bolt .....	1
18	900003245	Grommet .....	1
19	580017694	Screw .....	2
20	502566904	Washer .....	4
21	449022013	Lockwasher .....	4
22	504236222	Nut .....	2
23	449001016	Capscrew .....	2
24	580015118	Bracket .....	2
25	580014508	Floorplate .....	1
26	580015033	Floormat .....	1
27	932729903	Capscrew .....	4
28	504229298	Nut .....	4
29	504226242	Washer .....	4
30	580014509	Hinge (LH) .....	1
31	580014510	Hinge (RH) .....	1
32	504235245	Handle .....	2
33	449001170	Capscrew .....	2
34	449021003	Washer .....	2
35	931009924	Capscrew .....	2
36	504062730	Washer .....	2
37	955400910	Lockwasher .....	2
38	937300900	Nut .....	2
39	504062481	Tow Pin .....	1
40	580014513	Fender (LH) .....	1
41	580014514	Fender (RH) .....	1
42	449001134	Capscrew .....	2
43	504226242	Washer .....	12
44	449022016	Lockwasher .....	6
45	449015014	Nut .....	6

**FRAME AND COUNTERWEIGHT**

ITEM	PART NO.	DESCRIPTION	QTY
46	580032373	Capscrew.....	4
47	580008424	Non-Suspension Seat (☞ Page 1.8, ☞ Page 1.10) .....	1
47	580017036	Semi-Suspension Seat (☞ Page 1.10) .....	1
48	449001013	Capscrew.....	4
49	504229298	Nut.....	4
50	504226242	Washer .....	4

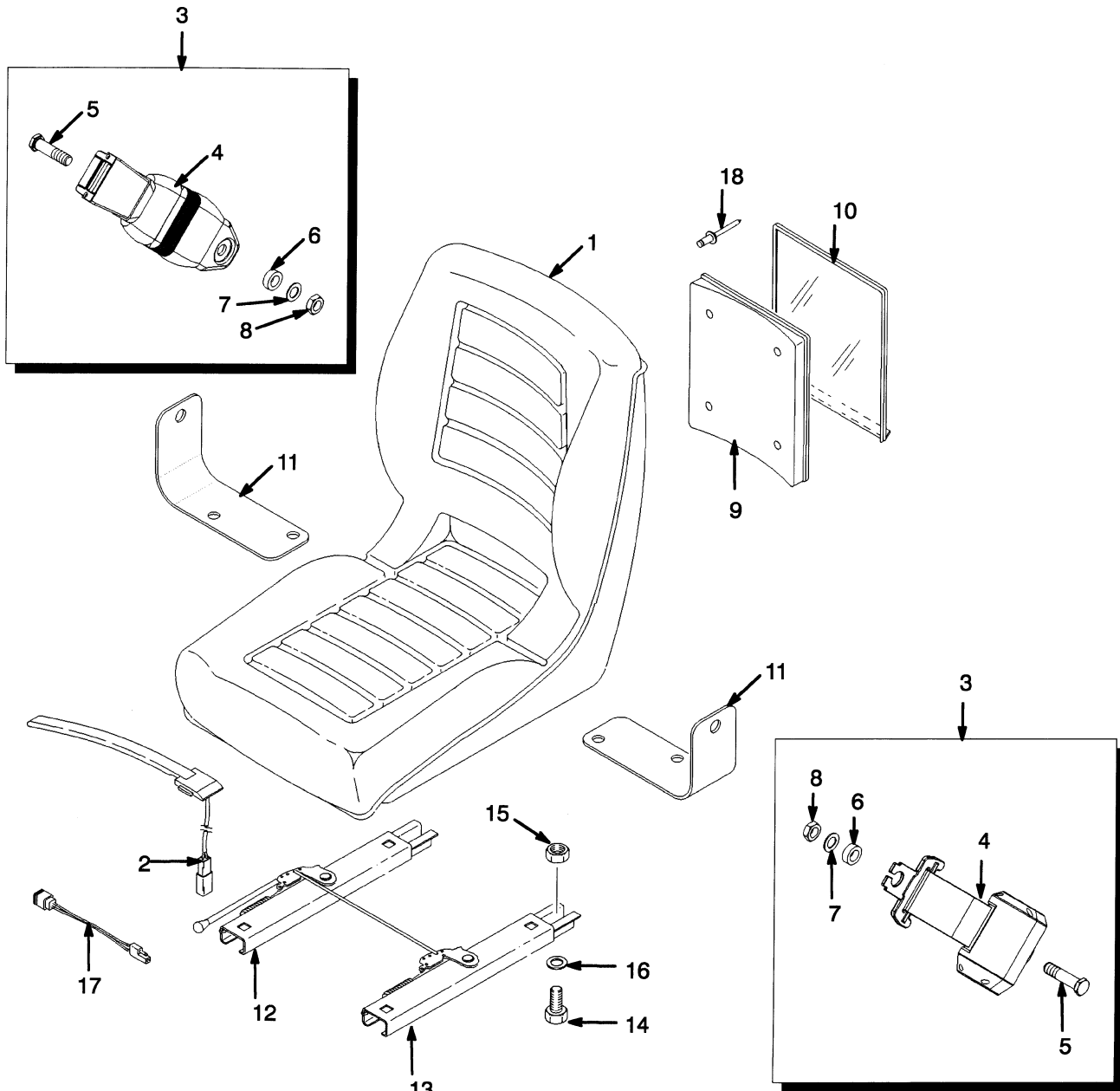
**FOOTNOTES:**

**a** ⇒ S/N A888A-01964Y

**b** S/N A888A-01965Y ⇒



## NON-SUSPENSION SEAT



YP260286



**Suggest:**

**For more complete manuals. Please go to the home page.**

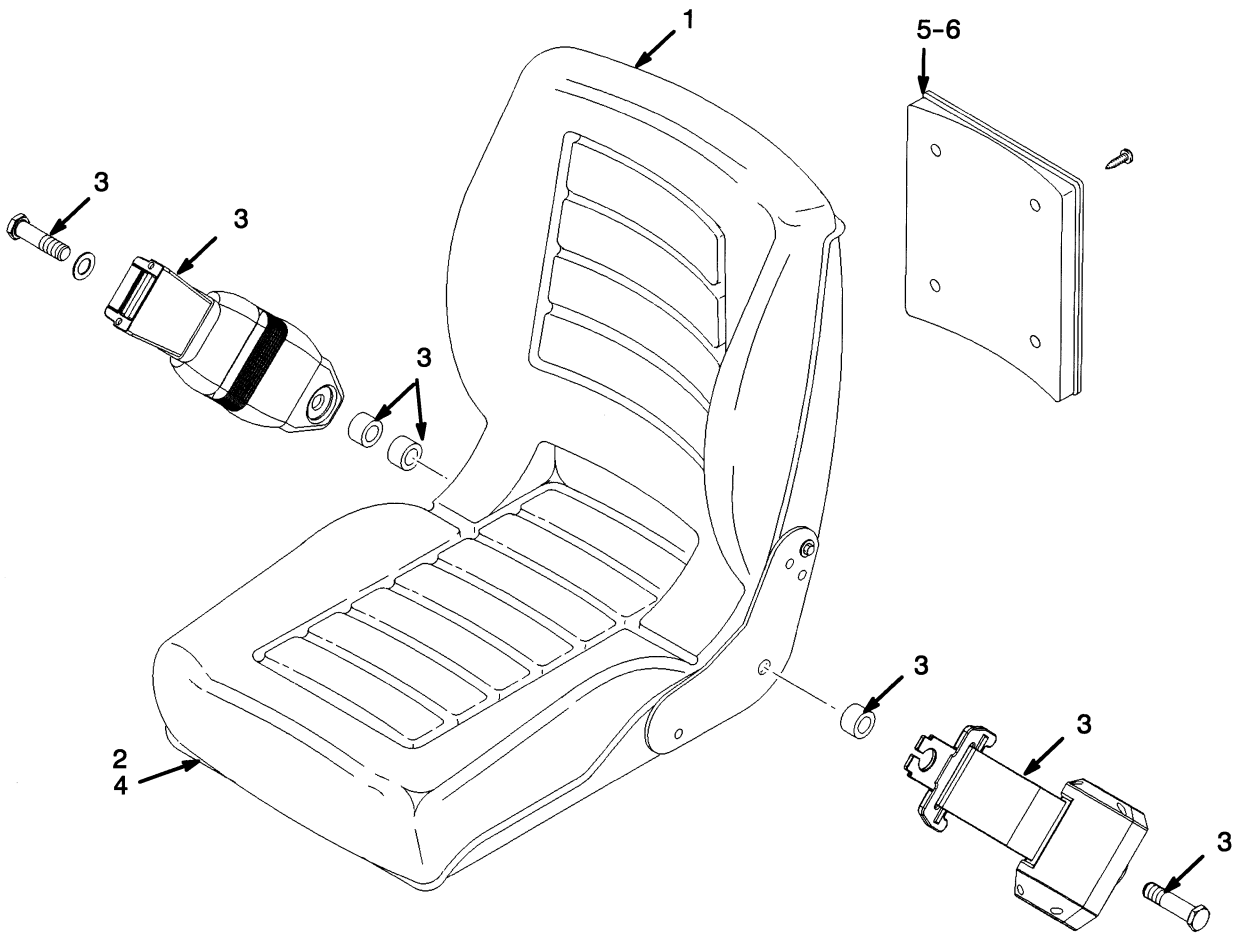
**<https://www.ebooklibonline.com>**

**If the above button click is invalid. Please download this document first, and then click the above link to download the complete manual.**

**Thank you so much for reading**

ITEM	PART NO.	DESCRIPTION	QTY
	580008424	Non-Suspension Seat.....	1
1	504232248	Seat.....	1
2	504305734	Switch Assembly .....	1
3	580010327	Seat Belt Kit .....	1
4	.....	Seat Belt .....	1
5	.....	Screw .....	2
6	.....	Washer.....	2
7	.....	Washer.....	2
8	.....	Nut .....	2
9	519996801	Base (Information Case) .....	1
10	519996803	Cover (Information Case) .....	1
11	580014487	Bracket .....	2
12	580014485	Seat Rail.....	1
13	580014486	Seat Rail.....	1
14	449001013	Capscrew.....	4
15	504229298	Nut.....	4
16	504226242	Washer .....	4
17	580008425	Jumper.....	1
18	.....	Rivet .....	4

SEMI-SUSPENSION SEAT



YP260287

**<https://www.ebooklibonline.com>**

Hello dear friend!

Thank you very much for reading.

Enter the link into your browser.

The full manual is available for immediate download.

**<https://www.ebooklibonline.com>**