

# **PARTS MANUAL**

---

**J1.60XMT-2.00XMT  
(J160)**

CUSTOMER EDITION

---

***HYSTER***

**SECTIONS**

<b>1</b>	<b>FRAME</b>
<b>2</b>	<b>ELECTRICAL SYSTEM</b>
<b>3</b>	<b>DRIVE UNIT</b>
<b>4</b>	<b>STEERING SYSTEM</b>
<b>5</b>	<b>BRAKE/ACCELERATOR SYSTEM</b>
<b>6</b>	<b>HYDRAULIC SYSTEM</b>
<b>7</b>	<b>MAST-TWO STAGE LIMITED FREE-LIFT</b>
<b>8</b>	<b>MAST-THREE STAGE FULL FREE-LIFT</b>
<b>9</b>	<b>MAST-TWO STAGE FULL FREE-LIFT</b>
<b>10</b>	<b>MAST-FOUR STAGE FULL FREE-LIFT</b>
<b>11</b>	<b>OPTIONS</b>
<b>12</b>	<b>NUMERICAL INDEX</b>

**TABLE OF CONTENTS**

DESCRIPTION	PAGE
<b>A</b>	
ACCELERATOR ASSEMBLY .....	5-2
ACCELERATOR PEDAL.....	5-4
<b>B</b>	
BACK-UP ALARM .....	11-2
BATTERY COMPARTMENT AND COVERS .....	1-2
BATTERY CONNECTOR	
DIN.....	2-2
NON-DIN.....	2-4
BATTERY SLIDER AND RETAINER .....	11-4
BATTERY SPACER .....	11-6
BRAKE ASSEMBLY .....	5-6
<b>C</b>	
CARRIAGE	
FOUR ROLLER	
FOUR STAGE FULL FREE-LIFT .....	10-24
SIX ROLLER	
FOUR STAGE FULL FREE-LIFT .....	10-26
THREE STAGE FULL FREE-LIFT .....	8-18
TWO STAGE FULL FREE-LIFT .....	9-16
TWO STAGE LIMITED FREE-LIFT.....	7-10
CONTACTOR .....	2-6
CONTACTOR PANEL .....	2-8
COUNTERWEIGHT .....	1-6
<b>D</b>	
DASH DISPLAY.....	2-10
DC CONVERTER	
36/48 VOLT TO 12 VOLT .....	11-8
DECAL AND PLATE LOCATION.....	1-8
DRIVE TIRE AND WHEEL ASSEMBLY	
SOLID PNEUMATIC .....	3-2
DRIVE UNIT .....	3-4
<b>E</b>	
ELECTRO-HYDRAULIC AUXILIARY ONE VALVE SECTION.....	6-36
ELECTRO-HYDRAULIC AUXILIARY TWO VALVE SECTION .....	6-38
ELECTRO-HYDRAULIC CONTROL .....	2-12
ELECTRO-HYDRAULIC CONTROL VALVE .....	6-30
ELECTRO-HYDRAULIC JOYSTICK .....	6-42
ELECTRO-HYDRAULIC LEVERS.....	6-40
ELECTRO-HYDRAULIC MAIN CONTROL VALVE SECTION .....	6-32
ELECTRO-HYDRAULIC TILT VALVE SECTION.....	6-34
EMERGENCY STOP.....	2-14

**<https://www.ebooklibonline.com>**

Hello dear friend!

Thank you very much for reading.

Enter the link into your browser.

The full manual is available for immediate download.

**<https://www.ebooklibonline.com>**

## TABLE OF CONTENTS (Continued)

DESCRIPTION	PAGE
<b>F</b>	
FLOOR PLATES	
⇒S/N J160A01500B.....	1-10
S/N J160A01501B⇒.....	1-12
FORKS.....	1-14
FREE LIFT	
THREE STAGE FULL FREE-LIFT.....	8-14
TWO STAGE FULL FREE-LIFT.....	9-12
FREE LIFT CYLINDER	
FOUR STAGE FULL FREE-LIFT.....	10-14
THREE STAGE FULL FREE-LIFT.....	8-16
TWO STAGE FULL FREE-LIFT.....	9-14
FREE LIFT HOSE	
FOUR STAGE FULL FREE-LIFT.....	10-18
FRONT LIGHT.....	11-10
<b>G</b>	
GEAR PUMP.....	4-2
<b>H</b>	
HAND PUMP.....	4-4
HANDLEVER.....	6-26
HEADER HOSE	
THREE STAGE FULL FREE-LIFT.....	8-20
TWO STAGE FULL FREE-LIFT.....	9-18
TWO STAGE LIMITED FREE-LIFT.....	7-12
HOSE ATTACHING PARTS	
DOUBLE FUNCTION	
FOUR STAGE FULL FREE-LIFT.....	10-30
SINGLE FUNCTION	
FOUR STAGE FULL FREE-LIFT.....	10-28
HYDRAULIC GEAR PUMP.....	6-4
HYDRAULIC HOSE AND FITTINGS	
ELECTRO.....	6-44
MANUAL.....	6-2
HYDRAULIC PUMP MOTOR.....	6-6
HYDRAULIC TANK ASSEMBLY.....	6-46
HYDRAULIC VALVE AND ATTACHING PARTS	
MANUAL.....	6-24
<b>I</b>	
INNER INTERMEDIATE MAST	
FOUR STAGE FULL FREE-LIFT.....	10-6
INNER MAST	
FOUR STAGE FULL FREE-LIFT.....	10-8
THREE STAGE FULL FREE-LIFT.....	8-6
TWO STAGE FULL FREE-LIFT.....	9-4
TWO STAGE LIMITED FREE-LIFT.....	7-4
INTEGRAL SIDE-SHIFT	
HYDRAULIC HOSES.....	11-18
INTEGRAL SIDE-SHIFT CARRIAGE	

**TABLE OF CONTENTS (Continued)**

DESCRIPTION	PAGE
I (continued)	
THREE STAGE FULL FREE-LIFT .....	11-14
TWO STAGE FULL FREE-LIFT .....	11-16
TWO STAGE LIMITED FREE-LIFT .....	11-12
INTERMEDIATE MAST	
THREE STAGE FULL FREE-LIFT .....	8-4
L	
LIFT CHAINS	
FOUR STAGE FULL FREE-LIFT .....	10-16
LOAD BACKREST	
FOUR STAGE FULL FREE-LIFT .....	10-22
LOAD BACKREST EXTENSION .....	1-18
LOWERING CONTROL VALVE	
FOUR STAGE FULL FREE-LIFT .....	10-20
M	
MAIN LIFT ASSEMBLY	
THREE STAGE FULL FREE-LIFT .....	8-8
TWO STAGE FULL FREE-LIFT .....	9-6
TWO STAGE LIMITED FREE-LIFT .....	7-6
MAIN LIFT CYLINDER	
LEFT HAND	
FOUR STAGE FULL FREE-LIFT .....	10-12
TWO STAGE FULL FREE-LIFT .....	9-8
RIGHT HAND	
FOUR STAGE FULL FREE-LIFT .....	10-10
TWO STAGE FULL FREE-LIFT .....	9-10
THREE STAGE FULL FREE-LIFT .....	8-12
TWO STAGE LIMITED FREE-LIFT .....	7-8
MAIN WIRE HARNESS .....	2-16
MANUAL CONTROL VALVE .....	6-28
MASTER CYLINDER .....	5-8
O	
OUTER INTERMEDIATE MAST	
FOUR STAGE FULL FREE-LIFT .....	10-4
OUTER MAST	
FOUR STAGE FULL FREE-LIFT .....	10-2
THREE STAGE FULL FREE-LIFT .....	8-2
TWO STAGE FULL FREE-LIFT .....	9-2
TWO STAGE LIMITED FREE-LIFT .....	7-2
OVERHEAD GUARD .....	1-20
P	
PARKING BRAKE .....	5-10

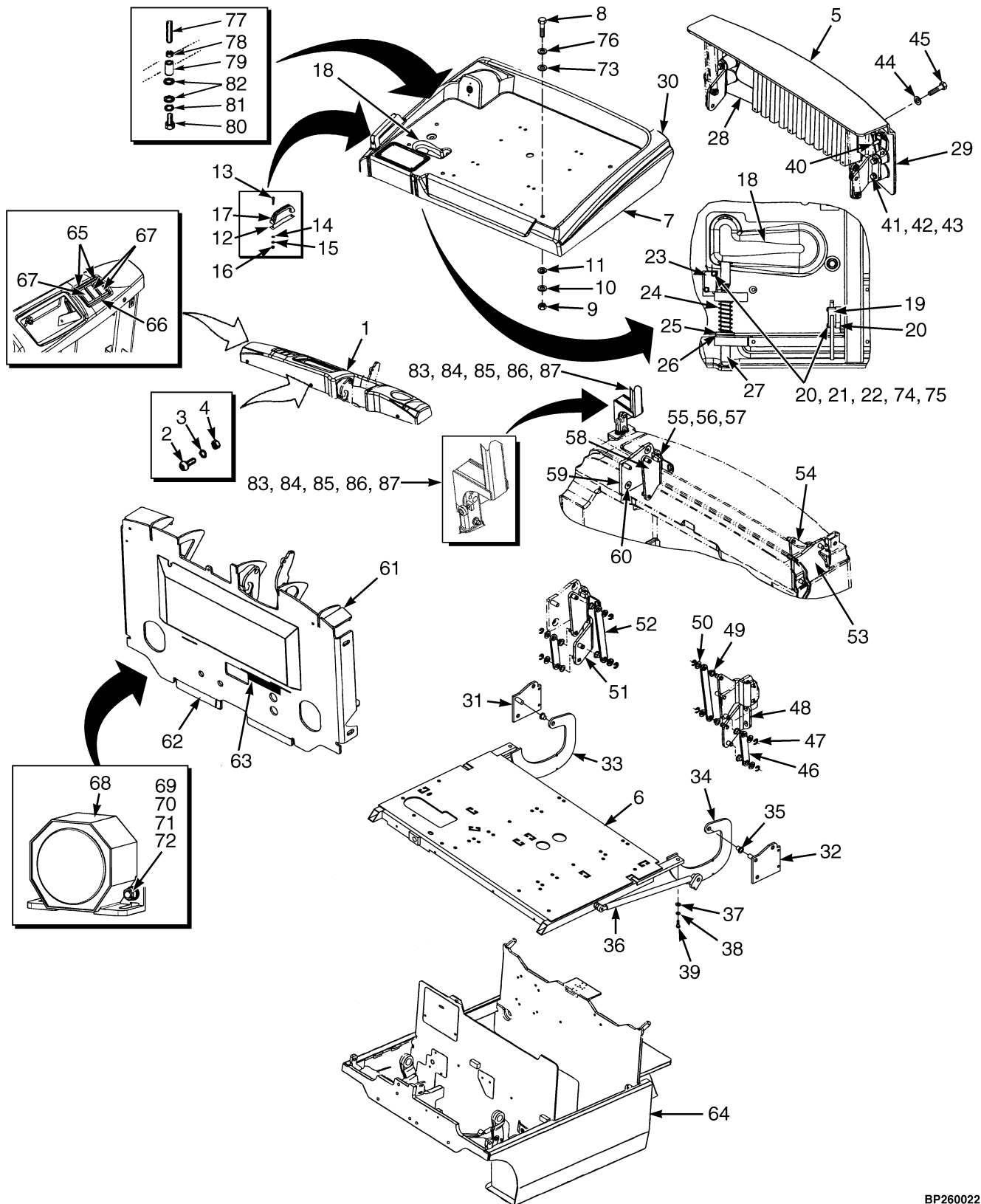
**TABLE OF CONTENTS (Continued)**

<b>DESCRIPTION</b>	<b>PAGE</b>
<b>S</b>	
SEAT	
FULL SUSPENSION.....	1-24
NON-SUSPENSION .....	1-22
SERVICE SOFTWARE AND INTERFACE CABLE .....	11-20
SHIFT LEVER .....	4-6
SIDE-SHIFT CYLINDER .....	11-19
STATIC STRAP.....	1-28
PENDING PER ECN 93456⇒.....	1-26
STEER AXLE .....	4-8
STEER COLUMN .....	4-12
STEER PUMP AND MOTOR .....	4-16
STEER TIRE AND WHEEL ASSEMBLY	
SOLID PNEUMATIC .....	4-18
<b>T</b>	
TAIL LIGHT.....	11-22
TILT CYLINDER	
FOUR STAGE FULL FREE-LIFT .....	6-20
THREE STAGE FULL FREE-LIFT .....	6-12
TWO STAGE FULL FREE-LIFT .....	6-16
TWO STAGE LIMITED FREE-LIFT.....	6-8
TILT CYLINDER ATTACHING PARTS	
FOUR STAGE FULL FREE-LIFT .....	6-22
THREE STAGE FULL FREE-LIFT .....	6-14
TWO STAGE FULL FREE-LIFT .....	6-18
TWO STAGE LIMITED FREE-LIFT.....	6-10
TRACTION CONTROLLER	
CONTACTOR HYDRAULIC .....	2-20
TRANSISTOR/PREMIUM.....	2-22
TRACTION MOTOR .....	3-6
TRANSMISSION .....	3-8
<b>W</b>	
WIRE HARNESS	
OPTIONAL LIGHTS AND DC CONVERTER .....	11-28
WORK LIGHT .....	11-24
WORK LIGHT/STROBE COMBINATION .....	11-26

**SECTION 1**  
**FRAME**

DESCRIPTION	PAGE
BATTERY COMPARTMENT AND COVERS .....	1-2
COUNTERWEIGHT .....	1-6
DECAL AND PLATE LOCATION .....	1-8
FLOOR PLATES	
⇒S/N J160A01500B .....	1-10
S/N J160A01501B⇒ .....	1-12
FORKS .....	1-14
LOAD BACKREST EXTENSION .....	1-18
OVERHEAD GUARD .....	1-20
SEAT	
FULL SUSPENSION .....	1-24
NON-SUSPENSION .....	1-22
STATIC STRAP .....	1-28
PENDING PER ECN 93456⇒ .....	1-26

## BATTERY COMPARTMENT AND COVERS (Figure 1-1)



BP260022

**BATTERY COMPARTMENT AND COVERS**

ITEM	PART NO.	DESCRIPTION	QTY
1	1528851	Cowl Cover .....	1
2	353144	Capscrew.....	5
3	320156	Washer .....	5
4	136687	Nut .....	5
5	1527262	Cover .....	1
6	<b>f</b> 1523615	Frame (1290 mm) .....	1
6	<b>g</b> 1593570	Frame (1290 mm) .....	1
6	<b>f</b> 1523614	Frame (1385 mm) .....	1
6	<b>g</b> 1593569	Frame (1385 mm) .....	1
6	<b>f</b> 1526650	Frame (1495 mm) .....	1
6	<b>g</b> 1593571	Frame (1495 mm) .....	1
7	1521321	Battery Cover (1290 mm) .....	1
7	1521405	Battery Cover (1385 mm) .....	1
7	1521406	Battery Cover (1495 mm) .....	1
8	369242	Capscrew.....	6
9	239503	Nut .....	6
10	292681	Lockwasher.....	6
11	320158	Washer .....	6
12	1523623	Backing Plate.....	1
13	292502	Capscrew.....	2
14	320156	Washer .....	2
15	292680	Lockwasher.....	2
16	136687	Nut .....	2
17	362030	Handle .....	1
18	1530955	Latch Handle .....	1
19	1533890	Microswitch .....	1
20	1536299	Standoff .....	4
21	302231	Screw.....	4
22	221852	Lockwasher.....	4
23	2037379	Switch .....	1
24	2307799	Spring .....	1
25	320161	Washer .....	1
26	182118	Retaining Ring .....	1
27	1528869	Pin .....	1
28	1541774	Seal Strip .....	1
29	1580419	Seal Strip .....	1
30	1573554	Seal Strip .....	1
31	1527299	Bracket Weldment (RH).....	1
32	1527304	Bracket Weldment (LH).....	1
33	<b>f</b> 1525750	Bracket (RH) .....	1
33	<b>g</b> 1588130	Bracket (RH) .....	1
34	<b>f</b> 1525751	Bracket (LH).....	1
34	<b>g</b> 1588131	Bracket (LH).....	1
35	2310972	Bearing .....	2
36	<b>cd</b> 1553456	Gas Spring.....	1
36	<b>e</b> 1587636	Gas Spring.....	2
36	<b>g</b> 1587634	Gas Spring.....	2
37	320158	Washer .....	4
38	292681	Lockwasher.....	4
39	287851	Capscrew.....	4
40	269200	Nut .....	2

## BATTERY COMPARTMENT AND COVERS

ITEM	PART NO.	DESCRIPTION	QTY
41	320159	Washer .....	4
42	292682	Lockwasher.....	4
43	293629	Capscrew.....	4
44	15176	Washer .....	2
45	2311598	Screw.....	2
46	1527296	Short Arm .....	2
47	182118	Retaining Ring.....	8
48	1527327	Bracket Weldment (LH).....	1
49	2056115	Bearing .....	8
50	320161	Washer .....	8
51	1527326	Bracket Weldment (RH).....	1
52	1527297	Long Arm .....	2
53	1527304	Bracket Weldment (LH).....	1
54	1527330	Bracket Weldment (LH).....	1
55	320157	Washer .....	4
56	293613	Capscrew.....	4
57	292681	Lockwasher.....	4
58	1527329	Bracket Weldment (RH).....	1
59	1527299	Bracket Weldment (RH).....	1
60	296252	Bolt .....	4
61	<b>h</b> 1519095	Cowl.....	1
61	<b>i</b> 1585548	Cowl.....	1
62	1554624	Seal Strip .....	2
63	1554625	Seal Strip .....	1
64	1560099	Frame (1290 mm).....	1
64	1525348	Frame (1385 mm).....	1
64	1525349	Frame (1495 mm).....	1
64	<b>a</b> 1560101	Frame (Optional).....	1
64	<b>b</b> 1525351	Frame (Optional).....	1
65	1382311	Mounting Panel.....	2
66	1382312	Mounting Panel.....	1
67	1382313	Mounting Panel.....	3
68	1483422	Horn.....	1
69	320156	Washer .....	2
70	292680	Lockwasher.....	2
71	136687	Nut .....	2
72	2062875	Capscrew.....	2
73	375629	Washer .....	6
74	2311598	Screw.....	2
75	1566250	Nut Plate Assembly .....	1
76	1565674	Plug .....	1
77	2309936	Stud .....	1
78	15026	Nut .....	1
79	1519932	Standoff .....	1
80	16634	Capscrew.....	1
81	15156	Lockwasher.....	1
82	15176	Washer .....	2
83	2302746	Bumper .....	1
84	<b>f</b> 293617	Capscrew.....	1
84	<b>g</b> 132861	Capscrew.....	1
85	320158	Washer .....	1

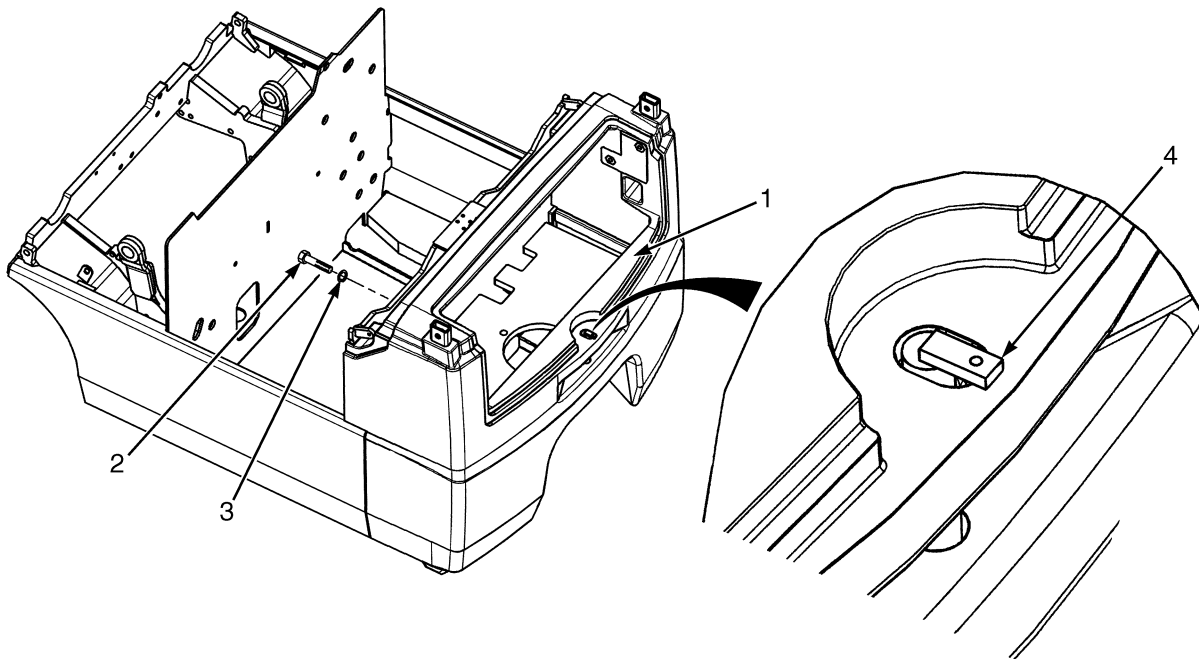
**BATTERY COMPARTMENT AND COVERS**

ITEM	PART NO.	DESCRIPTION	QTY
86	292681	Lockwasher.....	2
87	239503	Nut.....	2

**FOOTNOTES:**

- a** 1290 mm - Side Removal
- b** 1385 mm - Side Removal
- c** Quantity 2 for 1495 mm wheelbase.
- d** ⇒ S/N J160A02358C
- e** S/N J160A02359C ↔ S/N J160A02590C
- f** ⇒ S/N J160A02590C
- g** S/N J160A02591C ⇒
- h** ⇒ D/B 01/2005
- i** D/B 01/2005 ⇒

## COUNTERWEIGHT (Figure 1-2)

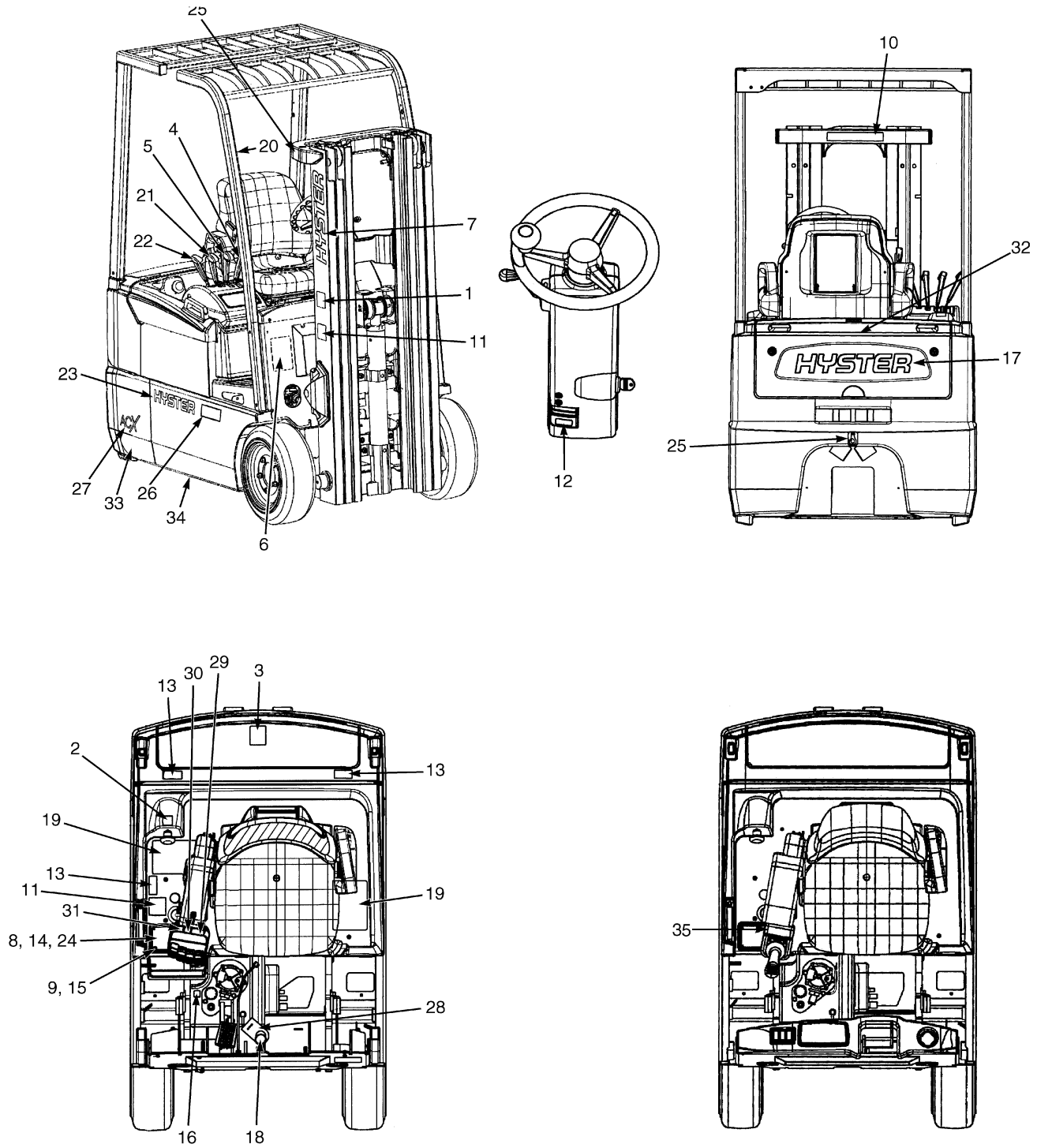


BP120055

**COUNTERWEIGHT**

ITEM	PART NO.	DESCRIPTION	QTY
1	1529150	Counterweight .....	1
2	293706	Capscrew .....	4
3	296431	Washer .....	4
4	1527974	Tow Pin .....	1

## DECAL AND PLATE LOCATION (Figure 1-3)



BP120066

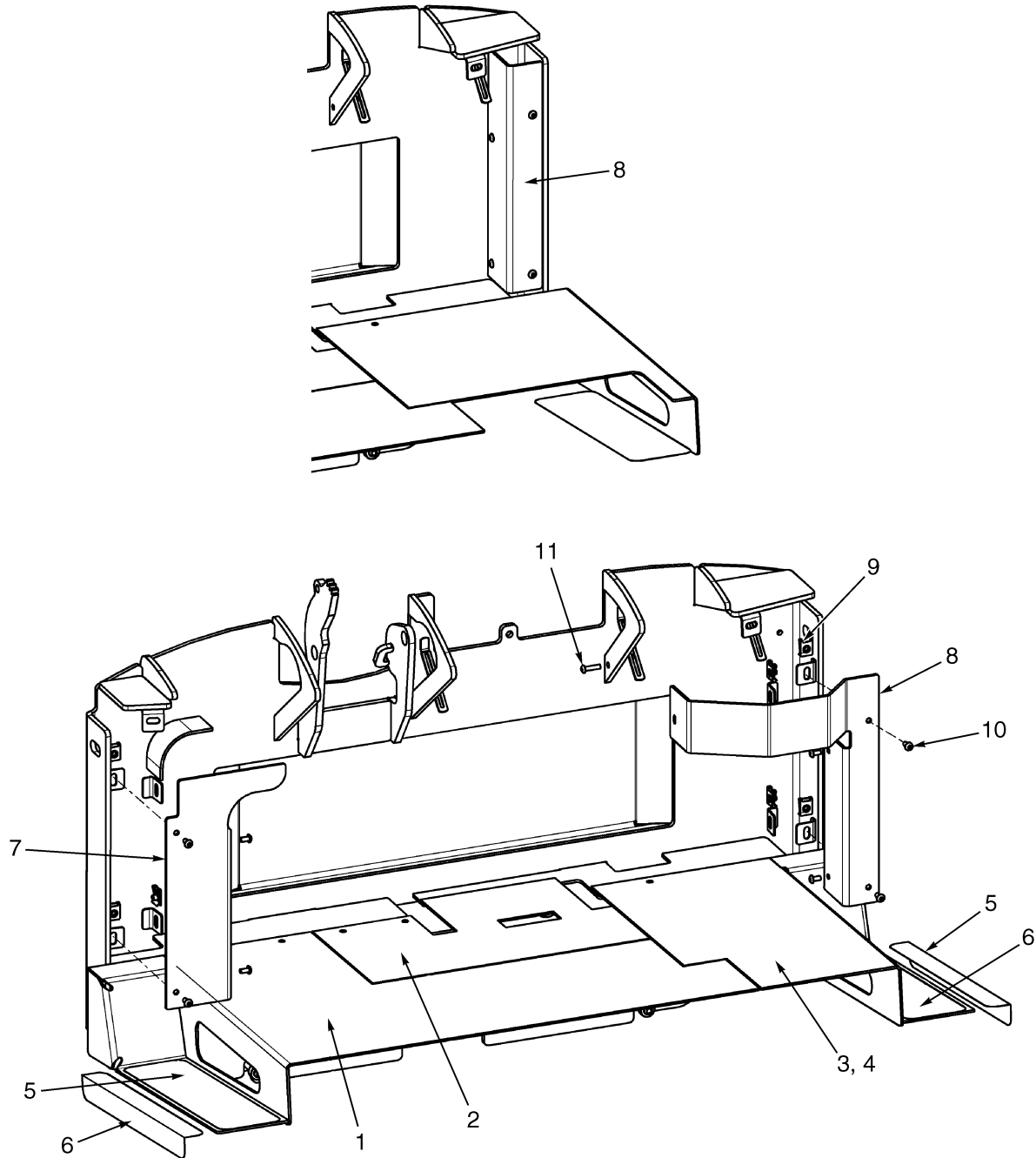
**DECAL AND PLATE LOCATION**

ITEM	PART NO.	DESCRIPTION	QTY
1	1339830	Label (Mast Warning) .....	2
2	2049939	Label (Battery Disconnect) .....	1
3	1339828	Label (No Riders) .....	1
4	1538033	Label (Lift).....	1
5	1538034	Label (Tilt).....	1
6	320037	Label (Patent Plate) .....	1
7	1339672	Label (Hyster) .....	2
8	1471618	Label (Nameplate) .....	1
8	<b>a</b> . . . . .	Nameplate .....	1
8	238950	Label (Incomplete Truck) .....	1
9	170658	Rivet.....	4
10	1343276	Label (Mast Warning) .....	1
11	<b>c</b> 1339832	Label (Pinch Point) .....	2
12	2303178	Label (Tilt Column) .....	1
13	<b>c</b> 2304044	Label (Pinch Point) .....	2
14	389688	Cover .....	1
15	15140	Washer .....	4
16	1385099	Label (Hydraulic Oil Fill).....	1
17	1544266	Label (Hyster) .....	1
18	<b>b</b> . . . . .	Label (Brake System Fluid) (Cold Storage) .....	1
18	<b>b</b> . . . . .	Label (Brake System Fluid) .....	1
19	1366725	Label (Operator Warning) .....	1
20	1359588	Label (Operator Restraint) .....	2
21	1538036	Label (Sideshift).....	1
22	1538037	Label (Auxiliary Function - Fork Spread) .....	1
22	1538038	Label (Fork Rotate).....	1
23	1529042	Label (Hyster) .....	2
24	1560157	Label (Hyster) .....	1
25	316448	Label (Lifting Eye).....	3
26	2015059	Label (Model 1.60).....	2
26	2015060	Label (Model 1.80).....	2
26	1339667	Label (Model 2.00).....	2
27	1561212	Label (ACX) .....	2
28	2068404	Label (Brake System Fluid Tag).....	1
28	2068405	Label (Brake System Fluid Tag) (Cold Storage) .....	1
29	1356137	Label (Lift and Tilt) .....	1
30	370258	Label (Auxiliary Function - Side-Shift) .....	1
31	370259	Label (Auxiliary Function - Fork Spreader) .....	1
32	1561211	Label (Reflector) .....	1
33	1561208	Label (LH Rear) .....	2
33	1561207	Label (RH Rear) .....	2
34	1561210	Label (LH Front).....	1
34	1561209	Label (RH Front) .....	1
35	2070482	Label Set (Hoist and Tilt, Side-Shift) .....	1
35	2074989	Label Set (Hoist and Tilt, Fork Spread) .....	1

**FOOTNOTES:**

- a** Contact your dealer
- b** Not Serviced Separately
- c** Quantity 1 for Manual Hydraulics

## FLOOR PLATES (Figure 1-4) (⇒S/N J160A01500B)



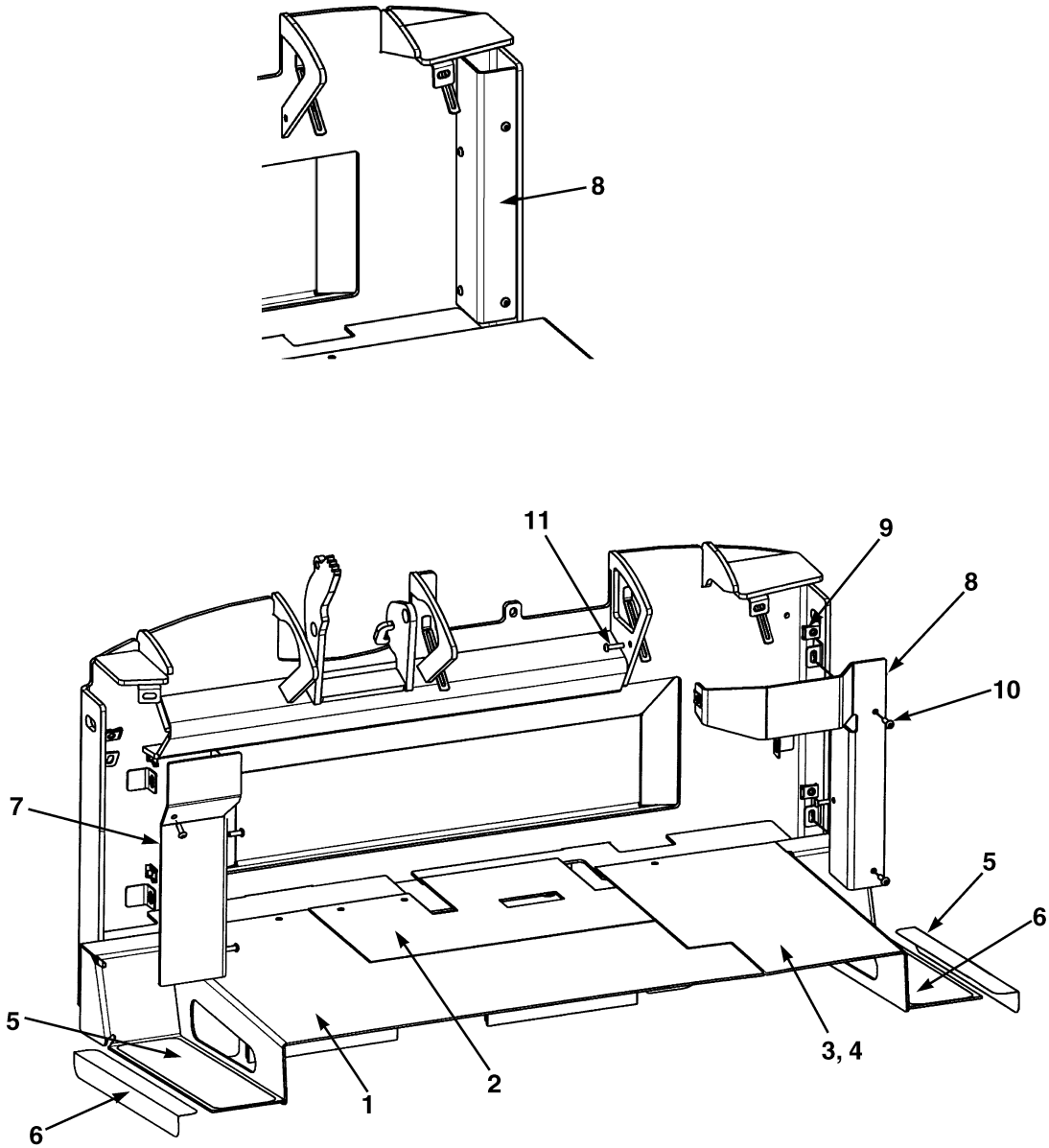
BP000191

**FLOOR PLATES**  
(⇒S/N J160A01500B)**KEY:****A: Electric Valve****B: Manual Valve**

ITEM	PART NO.	DESCRIPTION	QTY	
			A	B
1	2062267	Floor Plate (LH) .....	1	1
2	2062264	Floor Plate (Center) .....	1	1
3	2062266	Floor Plate (RH).....	..	1
4	2062265	Floor Plate (RH) (With Step).....	1	..
5	2062560	Anti-Slip Pad .....	2	1
6	2309317	Anti-Slip Pad .....	2	1
7	1550531	Hose Cover .....	1	1
8	1528551	Harness Cover.....	1	..
8	1551236	Harness Cover.....	..	1
9	1364542	Clip Nut.....	9	9
10	2062718	Capscrew.....	8	8
11	2066709	Capscrew.....	1	..
	a 2059533	Floor Mat .....	..	1
	a 2059534	Floor Mat .....	1	..

**FOOTNOTES:****a** Not Illustrated

## FLOOR PLATES (Figure 1-5) (S/N J160A01501B⇒)



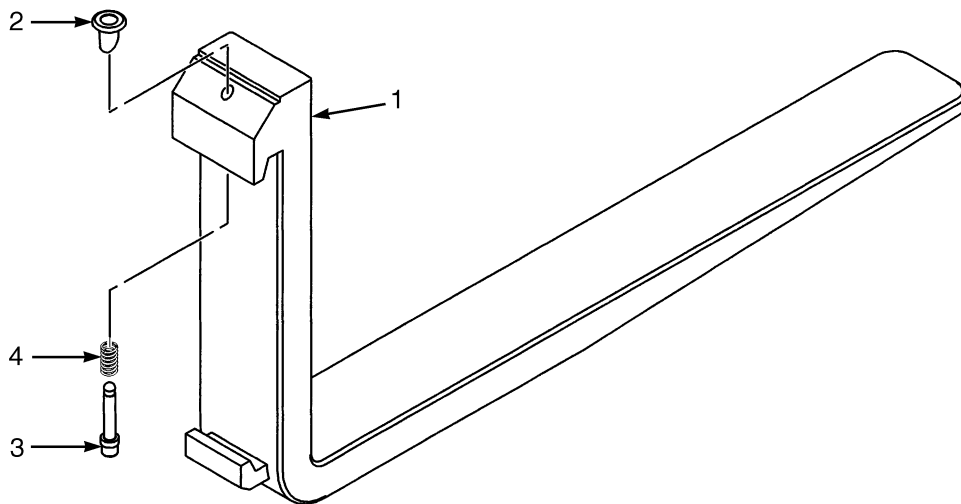
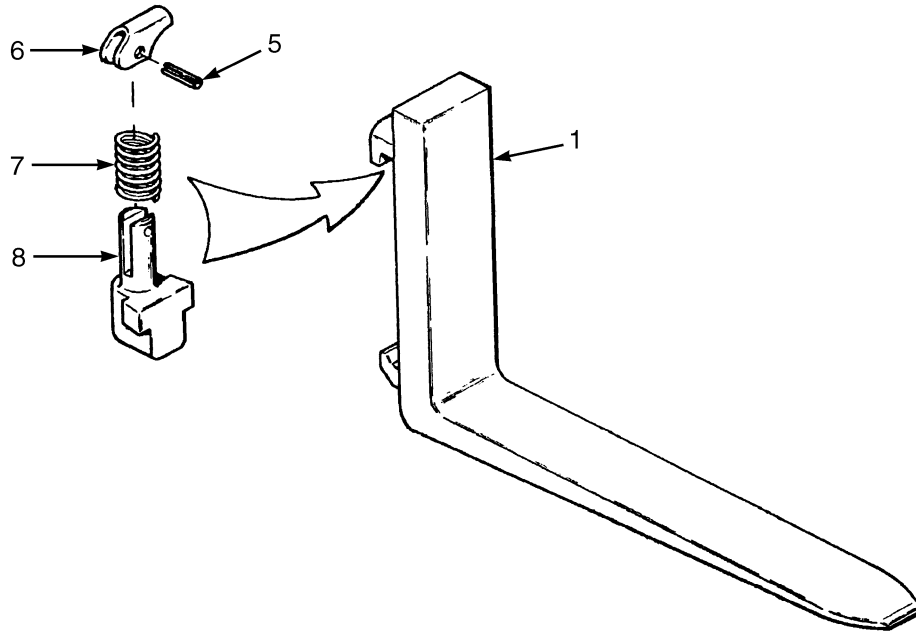
BP000227

**FLOOR PLATES**  
**(S/N J160A01501B⇒)****KEY:****A: Electric Valve****B: Manual Valve**

ITEM	PART NO.	DESCRIPTION	QTY	
			A	B
1	<b>b</b> 2062267	Floor Plate (LH) .....	1	1
1	<b>c</b> 1585515	Floor Plate (LH) .....	1	1
1	<b>c</b> 2311223	Pin .....	1	1
1	<b>c</b> 15181	Washer .....	4	4
2	1565784	Floor Plate (Center) .....	1	1
3	1565785	Floor Plate (RH) .....	..	1
4	<b>b</b> 2062265	Floor Plate (RH) (With Step) .....	1	..
4	<b>c</b> 1585519	Floor Plate (RH) (With Step) .....	1	..
5	2062560	Anti-Slip Pad .....	2	1
6	2309317	Anti-Slip Pad .....	2	1
7	1550531	Hose Cover .....	1	1
8	1528551	Harness Cover .....	1	..
8	1551236	Harness Cover .....	..	1
9	1364542	Clip Nut .....	7	6
10	1378550	Capscrew .....	6	6
11	2066709	Capscrew .....	1	..
	<b>a</b> 2059533	Floor Mat .....	..	1
	<b>a</b> 2059534	Floor Mat .....	1	..

**FOOTNOTES:****a** Not Illustrated**b** ⇒ PENDING PER ECN 10203149**c** PENDING PER ECN 10203149 ⇒

## FORKS (Figure 1-6)



BP290016

**FORKS****KEY:****A: Standard****B: Optional**

ITEM	PART NO.	DESCRIPTION	QTY	
			A	B
1	1338129	Fork (889 mm) (80 x 40 x 900) .....	2	..
1	1327017	Fork (914 mm) (80 x 40 x 914) .....	2	..
1	1327021	Fork (991 mm) (80 x 40 x 1000) .....	2	..
1	1327018	Fork (1067 mm) (80 x 40 x 1067) .....	2	..
1	1327019	Fork (1219 mm) (80 x 40 x 1219) .....	2	..
1	1327020	Fork (1372 mm) (80 x 40 x 1372) .....	2	..
1	1327021	Fork (991 mm) (80 x 40 x 1000) .....	2	..
1	1327022	Fork (1092 mm) (80 x 40 x 1100) .....	2	..
1	1338131	Fork (1143 mm) (80 x 40 x 1150) .....	2	..
1	1327023	Fork (1194 mm) (80 x 40 x 1200) .....	2	..
1	384210	Fork (762 mm) (100 x 40 x 762) .....	2	..
1	1338133	Fork (889 mm) (100 x 40 x 900) .....	2	..
1	384211	Fork (914 mm) (100 x 40 x 914) .....	2	..
1	<b>a</b> 1338076	Fork (914 mm) (100 x 40 x 914) .....	2	..
1	<b>c</b> 1333043	Fork (1000 mm) (100 x 40 x 1000) .....	2	..
1	384213	Fork (1067 mm) (100 x 40 x 1067) .....	2	..
1	<b>ac</b> 1338077	Fork (1067 mm) (100 x 40 x 1067) .....	2	..
1	1333044	Fork (1100 mm) (100 x 40 x 1100) .....	2	..
1	1338135	Fork (1143 mm) (100 x 40 x 1150) .....	2	..
1	<b>c</b> 1333045	Fork (1200 mm) (100 x 40 x 1200) .....	2	..
1	384214	Fork (1219 mm) (100 x 40 x 1219) .....	2	..
1	<b>ac</b> 1338078	Fork (1219 mm) (100 x 40 x 1219) .....	2	..
1	384215	Fork (1372 mm) (100 x 40 x 1372) .....	2	..
1	384216	Fork (1524 mm) (100 x 40 x 1524) .....	2	..
2	1523732	Knob .....	1	..
3	1523733	Pin .....	1	..
4	1500782	Spring .....	1	..
5	1378775	Fork (889 mm) (80 x 40 x 900) .....	..	2
5	1378771	Fork (914 mm) (80 x 40 x 914) .....	..	2
5	1378776	Fork (991 mm) (80 x 40 x 1000) .....	..	2
5	1378772	Fork (1067 mm) (80 x 40 x 1067) .....	..	2
5	1378773	Fork (1219 mm) (80 x 40 x 1219) .....	..	2
5	1378774	Fork (1372 mm) (80 x 40 x 1372) .....	..	2
5	1378776	Fork (991 mm) (80 x 40 x 1000) .....	..	2
5	1378777	Fork (1092 mm) (80 x 40 x 1100) .....	..	2
5	1378778	Fork (1143 mm) (80 x 40 x 1150) .....	..	2
5	1378779	Fork (1194 mm) (80 x 40 x 1200) .....	..	2
5	1378785	Fork (762 mm) (100 x 40 x 762) .....	..	2
5	1378792	Fork (900 mm) (100 x 40 x 900) .....	..	2
5	1378786	Fork (914 mm) (100 x 40 x 914) .....	..	2
5	<b>a</b> 1378798	Fork (914 mm) (100 x 40 x 914) .....	..	2
5	<b>c</b> 1378793	Fork (991 mm) (100 x 40 x 1000) .....	..	2
5	1378788	Fork (1067 mm) (100 x 40 x 1067) .....	..	2
5	<b>ac</b> 1378799	Fork (1067 mm) (100 x 40 x 1067) .....	..	2
5	1378794	Fork (1092 mm) (100 x 40 x 1100) .....	..	2
5	1378795	Fork (1143 mm) (100 x 40 x 1150) .....	..	2

## FORKS

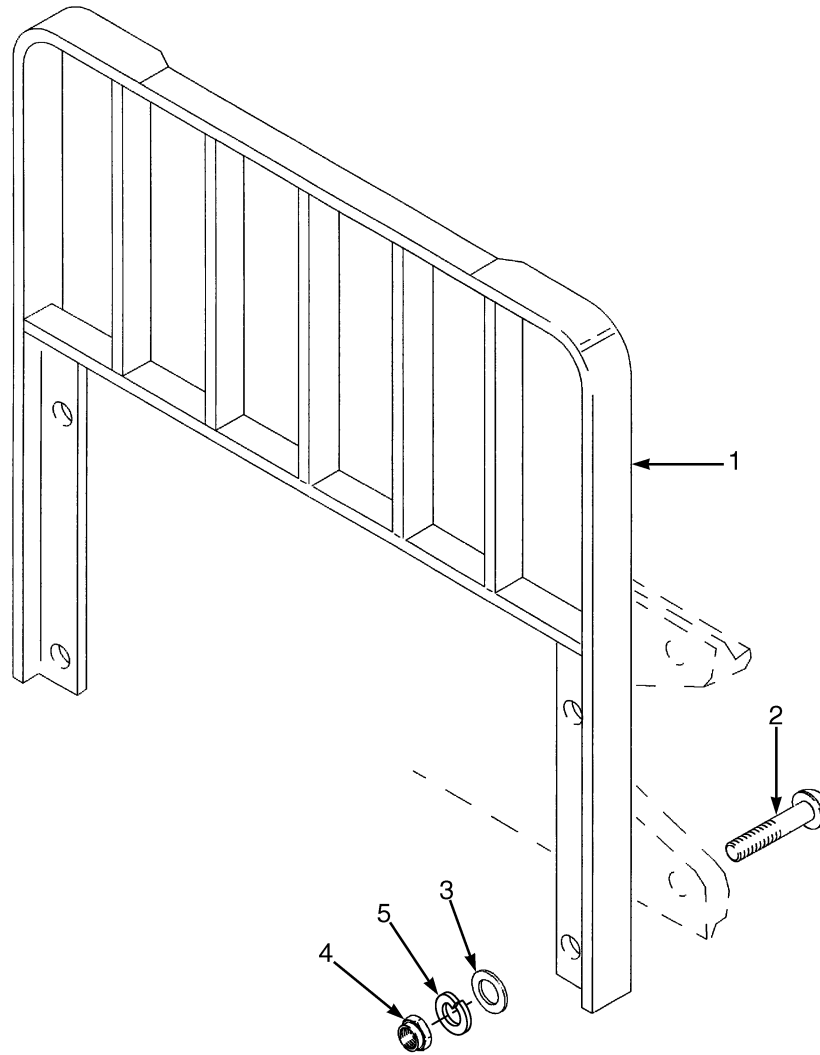
ITEM	PART NO.	DESCRIPTION	QTY	
			A	B
5	<b>c</b> 1378796	Fork (1194 mm) (100 x 40 x 1200) .....	..	2
5	1378789	Fork (1219 mm) (100 x 40 x 1219) .....	..	2
5	<b>ac</b> 1378800	Fork (1219 mm) (100 x 40 x 1219) .....	..	2
5	1378790	Fork (1372 mm) (100 x 40 x 1372) .....	..	2
5	1378791	Fork (1524 mm) (100 x 40 x 1524) .....	..	2
6	302450	Pin .....	..	1
7	1378763	Latch .....	..	1
8	1378762	Spring .....	..	1
9	1378760	Pin .....	..	1
	1378765	Latch Kit (Class II) (Includes Items 6-9) .....	..	1
	<b>b</b> 1523734	Retainer Pin .....	1	..

**FOOTNOTES:**

- a** Full Bottom Taper
- b** Not Illustrated
- c** Not used on Four Stage Full-Free Lift



## LOAD BACKREST EXTENSION (Figure 1-7)

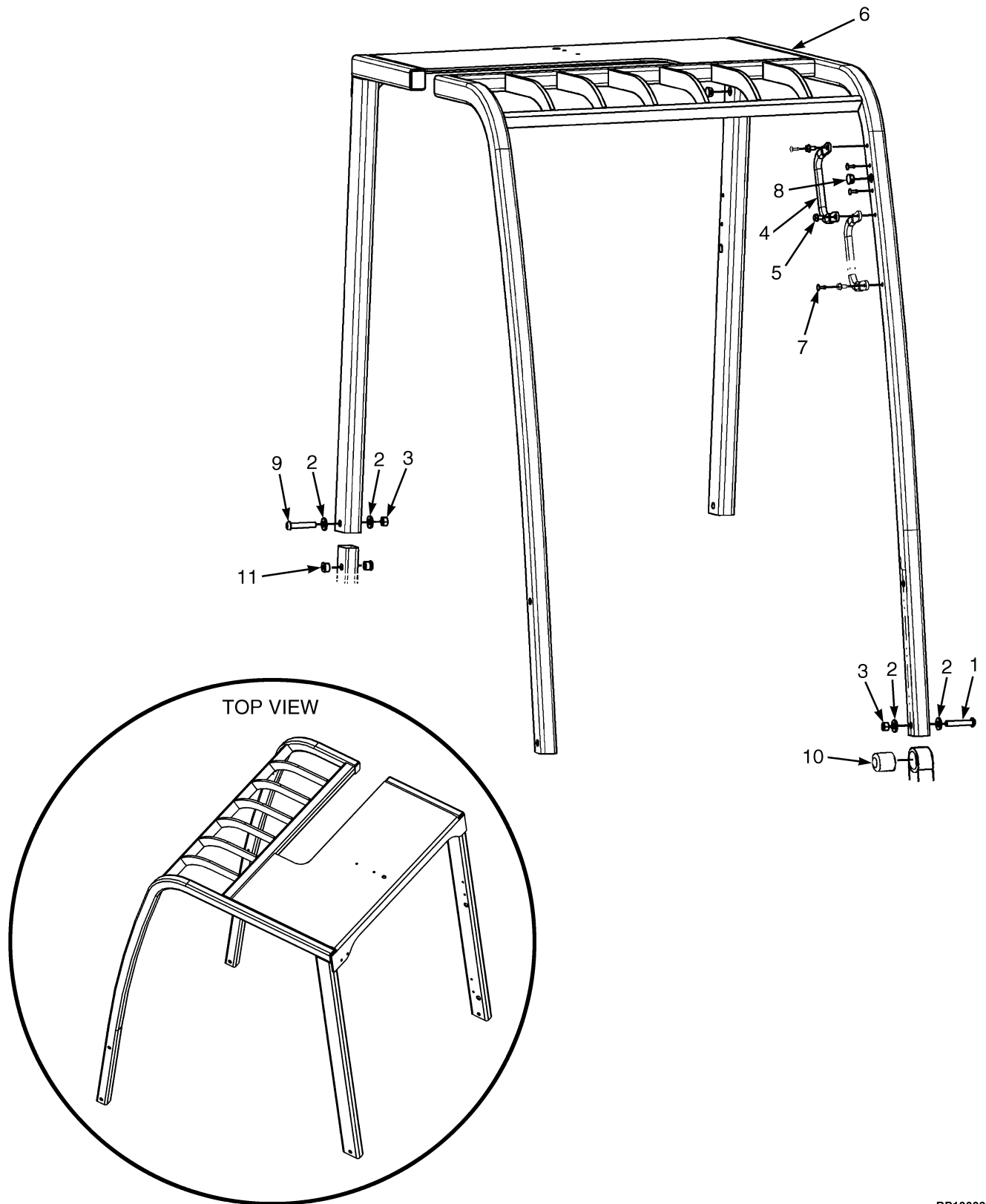


BP290015

**LOAD BACKREST EXTENSION**

ITEM	PART NO.	DESCRIPTION	QTY
1	1349446	Load Backrest Extension (977 mm).....	1
2	1353533	Capscrew.....	4
3	221771	Washer .....	4
3	296423	Washer (Optional).....	4
4	300937	Locknut .....	4

## OVERHEAD GUARD (Figure 1-8)

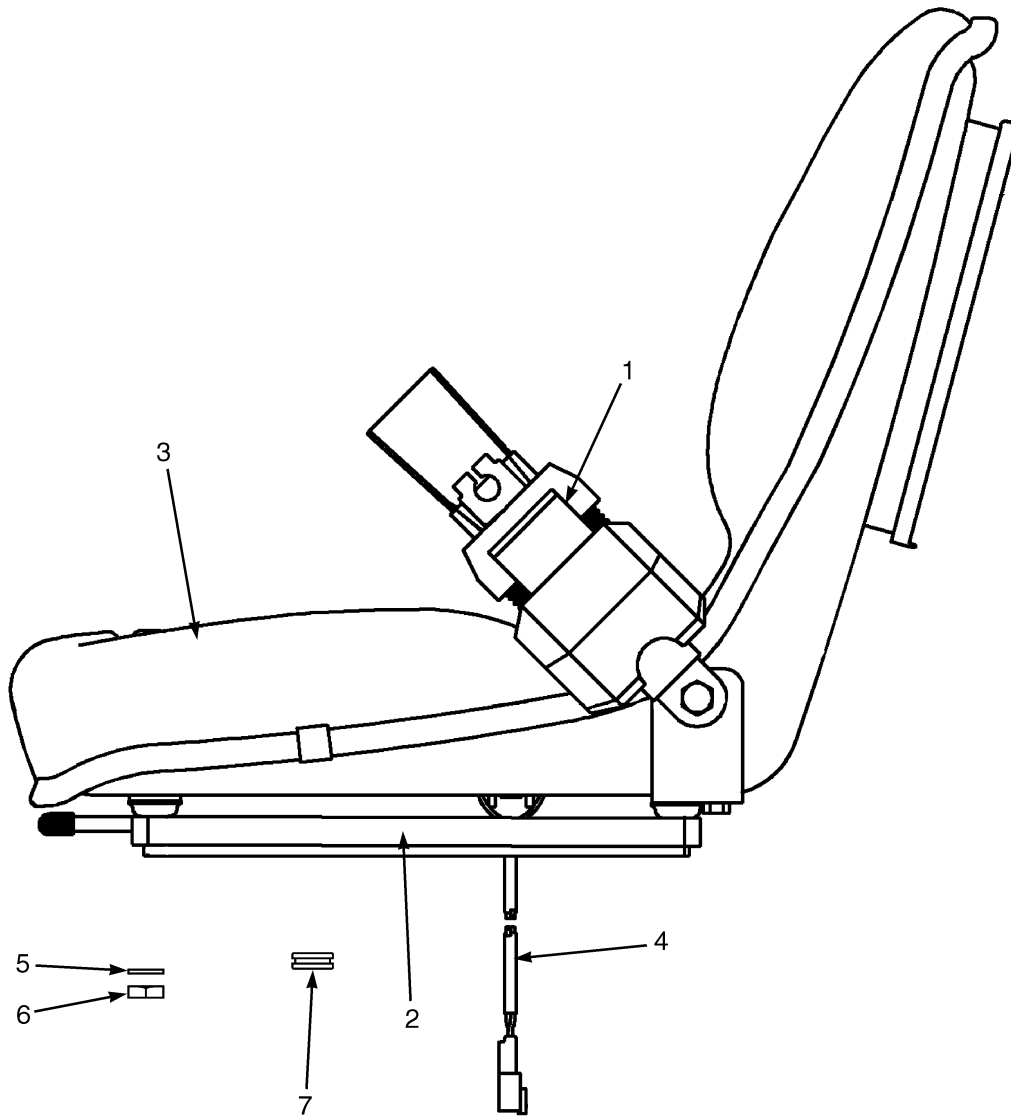


BP120039

**OVERHEAD GUARD**

ITEM	PART NO.	DESCRIPTION	QTY
1	2034347	Capscrew.....	4
2	320162	Washer .....	12
3	216877	Nut .....	6
4	1343647	Handle .....	1
5	316678	Screw.....	2
6	1534632	Overhead Guard (1290 mm).....	1
6	1534633	Overhead Guard (1385 mm).....	1
6	1534634	Overhead Guard (1495 mm).....	1
7	1363916	Plug .....	13
8	1363917	Plug .....	7
9	2034348	Capscrew.....	2
10	1553963	Bushing.....	2
11	1554932	Bushing.....	4

## SEAT (Figure 1-9) NON-SUSPENSION



BP120078

**SEAT  
NON-SUSPENSION**

ITEM	PART NO.	DESCRIPTION	QTY
	1563192	Seat (Vinyl) .....	1
	1563193	Seat (Cloth) .....	1
1	1563212	Seat Belt.....	1
2	1563218	Slide .....	1
3	1563351	Cushions (Vinyl) .....	1
3	1563222	Cushions (Cloth).....	1
4	1553655	Harness.....	1
5	15175	Washer .....	4
6	15114	Nut .....	4
7	392238	Grommet.....	1
	a 1563215	Sensor (Operator Presence) .....	1
	a 2070392	Pigtail.....	1

**FOOTNOTES:**

a Not Illustrated



**SEAT  
FULL SUSPENSION****KEY:**

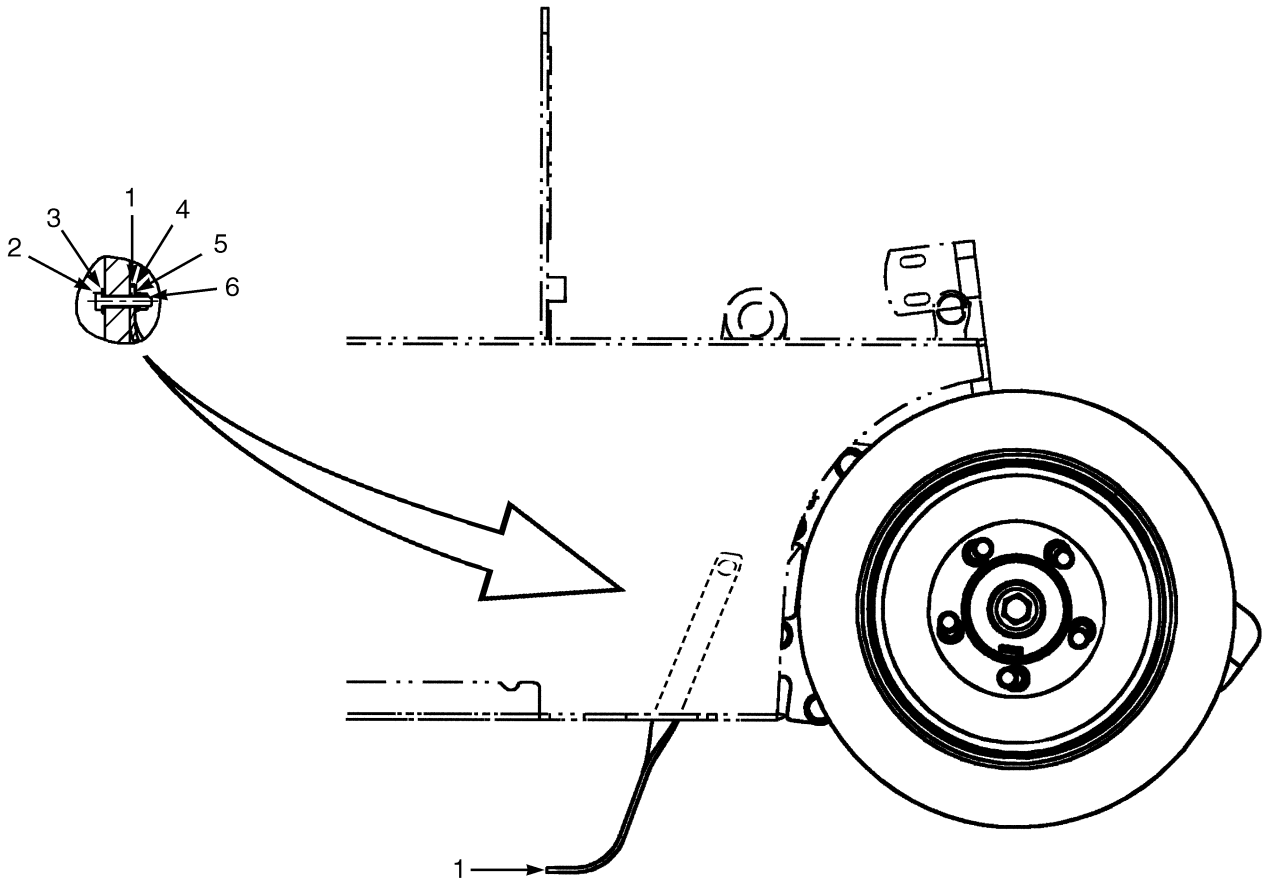
- A: Full Suspension (Vinyl)**  
**B: Full Suspension (Cloth)**  
**C: Full Suspension (Vinyl with Electronic Control Arm)**  
**D: Full Suspension (Cloth with Electronic Control Arm)**

ITEM	PART NO.	DESCRIPTION	QTY			
			A	B	C	D
	1562665	Seat (Vinyl) .....	1	..	..	..
	1562666	Seat (Cloth) .....	..	1	..	..
	<b>c</b> 1540035	Seat (Vinyl) .....	..	..	1	..
	<b>d</b> 1591641	Seat (Vinyl) .....	..	..	1	..
	<b>c</b> 1540036	Seat (Cloth) .....	..	..	..	1
	<b>d</b> 1591642	Seat (Cloth) .....	..	..	..	1
1	1563207	Seat Cushion.....	1	..	1	..
1	1494077	Seat Cushion (Cloth).....	..	1	..	1
2	1563209	Slide .....	1	1	1	1
3	1470152	Back Cushion (Vinyl) .....	1	..	1	..
3	1470153	Back Cushion (Fabric).....	..	1	..	1
4	1553655	Harness.....	1	1	..	..
4	1553654	Harness.....	..	..	1	1
5	15175	Washer .....	4	4	4	4
6	15114	Nut .....	4	4	4	4
7	392238	Grommet.....	1	1	1	1
8	1563230	Arm Cushion.....	1	1	1	1
8	1563231	Arm Cushion.....	1	1	..	..
9	1563212	Seat Belt .....	1	1	1	1
10	1467516	Armrest (LH) .....	1	1	1	1
10	1467517	Armrest (RH) .....	1	1	..	..
	<b>a</b> 1483828	Shock Kit .....	1	1	1	1
	<b>a</b> 1467529	Suspension Spring Kit.....	1	1	1	1
	<b>ab</b> 1563210	Foam Cap (Electronic Control Arm) .....	..	..	1	1
	<b>ab</b> 1563211	Knobs (Electronic Control Arm).....	..	..	1	1
	<b>a</b> 1563208	Sensor .....	1	1	1	1
	<b>a</b> 2070392	Pigtail.....	1	1	1	1
	<b>a</b> 893818	Ground Wire .....	1	1	1	1

**FOOTNOTES:**

- a** Not Illustrated  
**b** Used with Electronic Control Arm  
**c** ⇒ PENDING PER ECN 102360  
**d** PENDING PER ECN 102360 ⇒

## STATIC STRAP (Figure 1-11) (PENDING PER ECN 93456⇒)



BP120164



**Suggest:**

**For more complete manuals. Please go to the home page.**

**<https://www.ebooklibonline.com>**

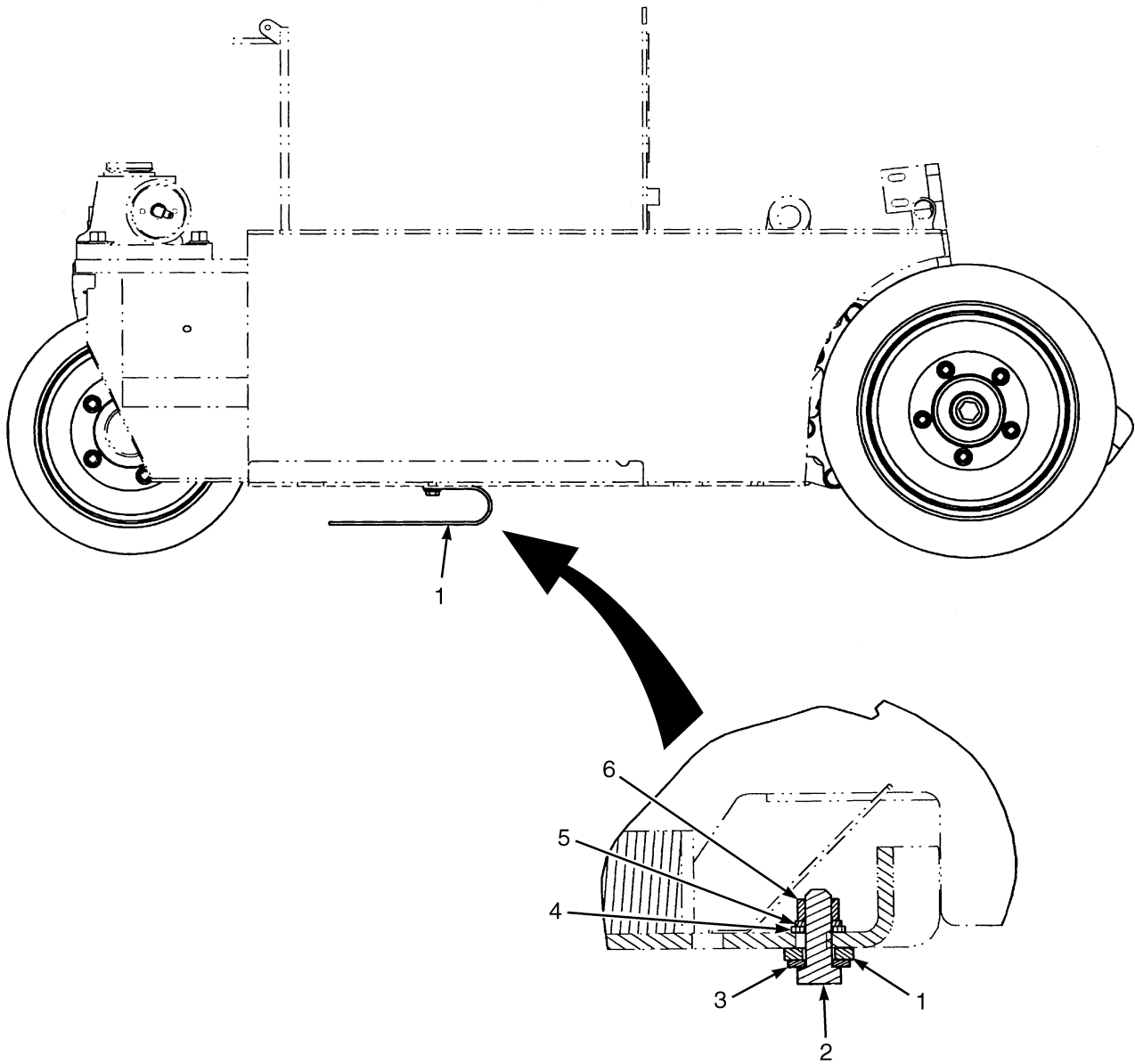
**If the above button click is invalid. Please download this document first, and then click the above link to download the complete manual.**

**Thank you so much for reading**

**STATIC STRAP**  
**(PENDING PER ECN 93456⇒)**

ITEM	PART NO.	DESCRIPTION	QTY
1	240074	Static Strap .....	1
2	292517	Capscrew.....	1
3	15176	Washer .....	1
4	320159	Washer .....	1
5	292682	Lockwasher.....	1
6	136692	Nut .....	1

## STATIC STRAP (Figure 1-12)



BP120070

**<https://www.ebooklibonline.com>**

Hello dear friend!

Thank you very much for reading.

Enter the link into your browser.

The full manual is available for immediate download.

**<https://www.ebooklibonline.com>**