

PARTS MANUAL

**H6.00-7.00XL
(G006)**

CUSTOMER EDITION

HYSTER

SECTIONS

| | |
|-----------|---|
| 1 | FRAME |
| 2 | ENGINES |
| 3 | FUEL SYSTEM |
| 4 | ELECTRICAL SYSTEM |
| 5 | TRANSMISSION |
| 6 | STEERING SYSTEM |
| 7 | BRAKE SYSTEM |
| 8 | HYDRAULIC SYSTEM |
| 9 | MAST-TWO STAGE LIMITED FREE-LIFT |
| 10 | MAST-THREE STAGE FULL FREE-LIFT |
| 11 | OPTIONS |
| 12 | NUMERICAL INDEX |

TABLE OF CONTENTS

| DESCRIPTION | PAGE |
|---|-------|
| A | |
| ACCELERATOR PEDAL AND BRACKET | |
| MONOTROL | 3-28 |
| WITH FORWARD AND REVERSE LEVER..... | 3-26 |
| AIR FILTER | |
| HEAVY DUTY | |
| DIESEL..... | 3-6 |
| LPG | 3-4 |
| LPG AND DIESEL | |
| STANDARD | 3-2 |
| ALTERNATOR AND MOUNTING | |
| DIESEL | 4-24 |
| AXLE HOUSING AND ATTACHING PARTS..... | 5-35 |
| B | |
| BATTERY DISCONNECT | |
| EEC | |
| DIESEL..... | 4-12 |
| LPG | 4-6 |
| BRAKE | 7-12 |
| BRAKE BOOSTER..... | 7-14 |
| BRAKE LINES | |
| PENDING PER ECN 74953⇒..... | 7-6 |
| ⇒PENDING PER ECN 74953..... | 7-4 |
| BRAKE PEDAL LINKAGE | |
| POWERSHIFT | 7-8 |
| C | |
| CAB | 11-2 |
| CAMSHAFT AND OIL SUMP | |
| LPG | 2-34 |
| CARRIAGE | |
| PIN TYPE | |
| THREE STAGE FULL FREE-LIFT | 10-16 |
| TWO STAGE LIMITED FREE-LIFT | 9-10 |
| CLUTCH PACK | |
| POWERSHIFT | |
| COUNTER, FORWARD, SHORT SHAFT | |
| D/B 10/2004⇒ | 5-20 |
| ⇒D/B 10/2004 | 5-18 |
| INPUT, REVERSE, LONG SHAFT | |
| D/B 10/2004⇒ | 5-24 |
| ⇒D/B 10/2004 | 5-22 |
| COIL ASSEMBLY | 2-24 |
| CONTROL VALVE | |
| FOUR FUNCTION | 8-24 |
| TWO AND THREE FUNCTION | 8-18 |
| CONTROL VALVE ATTACHING PARTS WITH FITTINGS | |
| FOUR FUNCTION | 8-26 |
| TWO AND THREE FUNCTION | 8-20 |
| CONTROL VALVE ATTACHING TUBES | 8-28 |

<https://www.ebooklibonline.com>

Hello dear friend!

Thank you very much for reading.

Enter the link into your browser.

The full manual is available for immediate download.

<https://www.ebooklibonline.com>

TABLE OF CONTENTS (Continued)

| DESCRIPTION | PAGE |
|--------------------------------------|-------------|
| C (continued) | |
| COOLING AND FAN DRIVE | |
| DIESEL | 2-20 |
| COUNTERWEIGHT | 1-22 |
| COWL AND FLOOR PLATES | 1-16 |
| CRANKSHAFT AND PISTONS | |
| DIESEL | 2-48 |
| CYLINDER BLOCK | |
| DIESEL | 2-42 |
| LPG | 2-26 |
| CYLINDER HEAD | |
| LPG | 2-28 |
| CYLINDER HEAD AND INDUCTION MANIFOLD | |
| DIESEL | 2-44 |
| D | |
| DIFFERENTIAL AND CARRIER | 5-32 |
| DISTRIBUTOR | |
| LPG | 4-5 |
| DRIVE ADAPTER | |
| DIESEL | 2-66 |
| DRIVE AXLE | 5-30 |
| DRIVE SHAFT | |
| HYDRAULIC | 8-4 |
| DRIVE SHAFT ASSEMBLY | 5-28 |
| E | |
| ELECTRICAL SYSTEM | |
| DIESEL | 4-8 |
| LPG | 4-2 |
| ENGINE ASSEMBLY | |
| LPG | 2-22 |
| ENGINE FUEL SYSTEM | |
| LPG | 3-10 |
| ENGINE MOUNTING | 2-4 |
| EXHAUST | |
| WITH CAB | |
| DIESEL | 2-10 |
| LPG | 2-8 |
| WITHOUT CAB | |
| DIESEL | 2-14 |
| LPG | 2-12 |
| EXHAUST MANIFOLD | |
| DIESEL | 2-56 |
| LPG | 2-40 |
| F | |
| FAN DRIVE AND ALTERNATOR MOUNTING | |
| LPG | 2-18 |
| FLYWHEEL | 2-6 |

TABLE OF CONTENTS (Continued)

| DESCRIPTION | PAGE |
|---|-------|
| F (continued) | |
| FORKS | |
| PIN TYPE..... | 1-26 |
| FREE-LIFT | |
| THREE STAGE FULL FREE-LIFT | 10-10 |
| FUEL FILTER | |
| TIER II | |
| DIESEL..... | 3-23 |
| FUEL INJECTION PUMP | |
| DIESEL TIER II | |
| ⇒S/N G006V01872B | 2-62 |
| WITH BLEED BACK SYSTEM | |
| S/N G006V01873B⇒ | 2-64 |
| FUEL SUPPLY SYSTEM | |
| DIESEL TIER II | |
| FUEL FILTER SYSTEM | 3-20 |
| TANK AND COVER ASSEMBLY | 3-16 |
| WATER SEPARATOR AND FUEL PUMP SYSTEM..... | 3-18 |
| LPG..... | 3-8 |
| FULL SUSPENSION SEAT | |
| PENDING PER ECN 74953⇒ | 1-12 |
| SHEET 1 OF 2 | |
| ⇒PENDING PER ECN 74953 | 1-8 |
| SHEET 2 OF 2 | |
| ⇒PENDING PER ECN 74953 | 1-10 |
| G | |
| GAUGE CLUSTER..... | 4-18 |
| GENERAL TRUCK..... | 1-2 |
| H | |
| HEADER HOSE | |
| THREE STAGE FULL FREE-LIFT | 10-18 |
| TWO STAGE LIMITED FREE-LIFT..... | 9-12 |
| HEATER | 11-6 |
| HOOD..... | 1-14 |
| HYDRAULIC OIL FILTER | 8-14 |
| HYDRAULIC PUMP..... | 8-10 |
| HYDRAULIC SYSTEM | 8-2 |
| HYDRAULIC TANK..... | 8-12 |
| I | |
| INNER MAST | |
| THREE STAGE FULL FREE-LIFT | 10-6 |
| TWO STAGE LIMITED FREE-LIFT..... | 9-4 |
| INSTRUMENT PANEL..... | 4-14 |
| INTERMEDIATE MAST | |
| THREE STAGE FULL FREE-LIFT | 10-4 |

TABLE OF CONTENTS (Continued)

| DESCRIPTION | PAGE |
|----------------------------------|-------------|
| L | |
| LABELS..... | 1-18 |
| LIFT | |
| TWO STAGE LIMITED FREE-LIFT..... | 9-6 |
| LIFT CYLINDER | |
| FREE-LIFT | |
| THREE STAGE FULL FREE-LIFT | 10-14 |
| MAIN | |
| THREE STAGE FULL FREE-LIFT | 10-12 |
| TWO STAGE LIMITED FREE-LIFT..... | 9-8 |
| LIGHTS..... | 11-18 |
| LOAD BACKREST EXTENSION..... | 1-24 |
| LPG REGULATOR | 3-14 |
| M | |
| MAIN LIFT | |
| THREE STAGE FULL FREE-LIFT | 10-8 |
| MASTER CYLINDER | 7-16 |
| MONOTROL PEDAL | 3-30 |
| N | |
| NON-SUSPENSION SEAT | |
| PENDING PER ECN 74953⇒..... | 1-6 |
| ⇒PENDING PER ECN 74953..... | 1-4 |
| O | |
| OIL COOLER | |
| DIESEL | 2-59 |
| OIL FILTER | |
| DIESEL | 2-57 |
| OIL PAN AND PUMP | |
| DIESEL | 2-50 |
| OIL PUMP | |
| LPG | 2-38 |
| OUTER MAST | |
| THREE STAGE FULL FREE-LIFT | 10-2 |
| TWO STAGE LIMITED FREE-LIFT..... | 9-2 |
| OVERHEAD GUARD..... | 1-20 |
| P | |
| PARK BRAKE..... | 7-2 |
| R | |
| RADIATOR | |
| LPG..... | 2-16 |
| ROTATING BEACON..... | 11-22 |

TABLE OF CONTENTS (Continued)

| DESCRIPTION | PAGE |
|-----------------------------------|-------|
| S | |
| SIDE-SHIFT CARRIAGE | |
| 1981 MM | |
| THREE STAGE FULL FREE-LIFT | 11-12 |
| TWO STAGE LIMITED FREE-LIFT | 11-10 |
| SIDE-SHIFT CYLINDER | 11-16 |
| STARTER | |
| LPG..... | 4-20 |
| STARTER MOTOR | |
| DIESEL | 4-22 |
| STEERING AXLE | 6-8 |
| STEERING COLUMN..... | 6-2 |
| STEERING CONTROL UNIT | 6-4 |
| STEERING CYLINDER | |
| PENDING PER ECN 10403003⇒ | 6-14 |
| ⇒PENDING PER ECN 10403003 | 6-12 |
| STEERING HYDRAULIC..... | 8-6 |
| STEERING PUMP..... | 6-6 |
| T | |
| THROTTLE BODY AND LPG MIXER..... | 3-12 |
| THROTTLE LINKAGE | |
| LPG AND DIESEL | 3-24 |
| TILT CYLINDER | 8-16 |
| TIMING GEAR | |
| DIESEL | 2-54 |
| TIRES AND WHEELS | |
| DRIVE | 11-24 |
| STEERING..... | 11-26 |
| TORQUE CONVERTER | |
| POWERSHIFT | 5-26 |
| TRANSMISSION | |
| POWERSHIFT | 5-2 |
| TRANSMISSION CONTROL LINKAGE | |
| FORWARD AND REVERSE LEVER | |
| PENDING PER ECN 74953⇒ | 5-16 |
| POWERSHIFT | 5-12 |
| TRANSMISSION CONTROL VALVE | |
| POWERSHIFT | 5-8 |
| TRANSMISSION COOLING..... | 8-30 |
| TRANSMISSION GEARS | |
| POWERSHIFT | 5-6 |
| V | |
| VALVE COVER AND INLET MANIFOLD | |
| LPG | 2-30 |
| VALVE COVER AND ROCKER ARM SHAFT | |
| DIESEL | 2-46 |

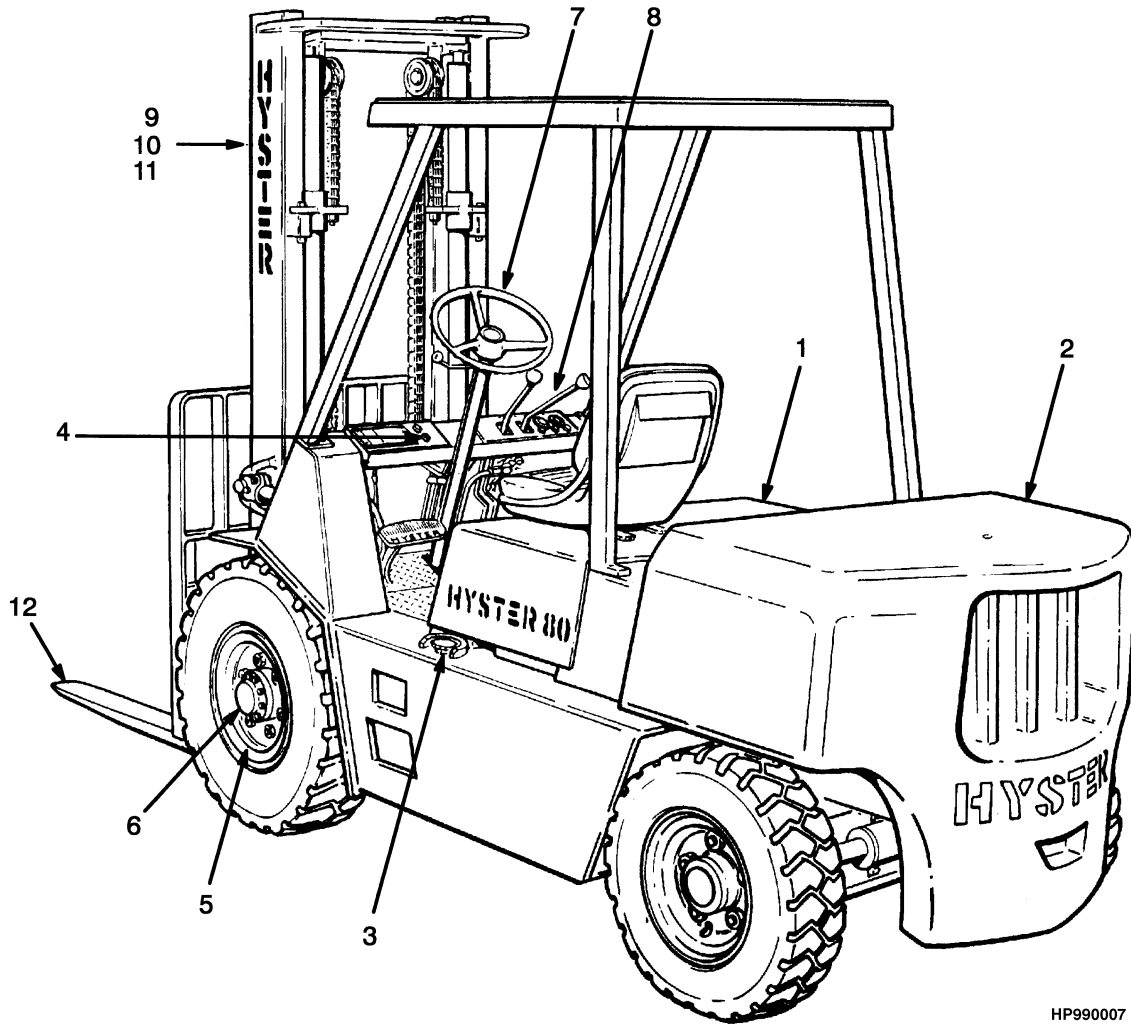
TABLE OF CONTENTS (Continued)

| DESCRIPTION | PAGE |
|-------------------------------------|-------------|
| W | |
| WATER PUMP AND OUTLET | |
| DIESEL | 2-52 |
| WATER SEPARATOR | |
| TIER II | |
| DIESEL..... | 3-22 |
| WIPER AND FAN | 11-8 |
| WIRE HARNESS | |
| ENGINE | |
| DIESEL..... | 4-46 |
| ENGINE, LPG, GM 4.3L | |
| SHEET 1 OF 2 | 4-48 |
| SHEET 2 OF 2 | 4-50 |
| INTERFACE..... | 4-44 |
| LPG REGULATOR | |
| GM 4.3L..... | 4-52 |
| MAIN | |
| DIESEL | |
| PENDING PER ECN 101124⇒..... | 4-28 |
| ⇒PENDING PER ECN 101124..... | 4-26 |
| LPG | |
| PENDING PER ECN 101124⇒..... | 4-36 |
| ⇒PENDING PER ECN 101124..... | 4-32 |
| NEUTRAL START FORWARD/REVERSE LEVER | |
| LPG | 4-42 |
| NEUTRAL START MONOTROL PEDAL | |
| LPG | 4-40 |
| OPERATOR PRESENCE SYSTEM | |
| PENDING PER ECN 74953⇒ | 4-54 |

**SECTION 1
FRAME**

| DESCRIPTION | PAGE |
|------------------------------|-------------|
| COUNTERWEIGHT | 1-22 |
| COWL AND FLOOR PLATES | 1-16 |
| FORKS | |
| PIN TYPE..... | 1-26 |
| FULL SUSPENSION SEAT | |
| PENDING PER ECN 74953⇒..... | 1-12 |
| SHEET 1 OF 2 | |
| ⇒PENDING PER ECN 74953 | 1-8 |
| SHEET 2 OF 2 | |
| ⇒PENDING PER ECN 74953 | 1-10 |
| GENERAL TRUCK | 1-2 |
| HOOD..... | 1-14 |
| LABELS..... | 1-18 |
| LOAD BACKREST EXTENSION..... | 1-24 |
| NON-SUSPENSION SEAT | |
| PENDING PER ECN 74953⇒..... | 1-6 |
| ⇒PENDING PER ECN 74953..... | 1-4 |
| OVERHEAD GUARD..... | 1-20 |

GENERAL TRUCK (Figure 1-1)

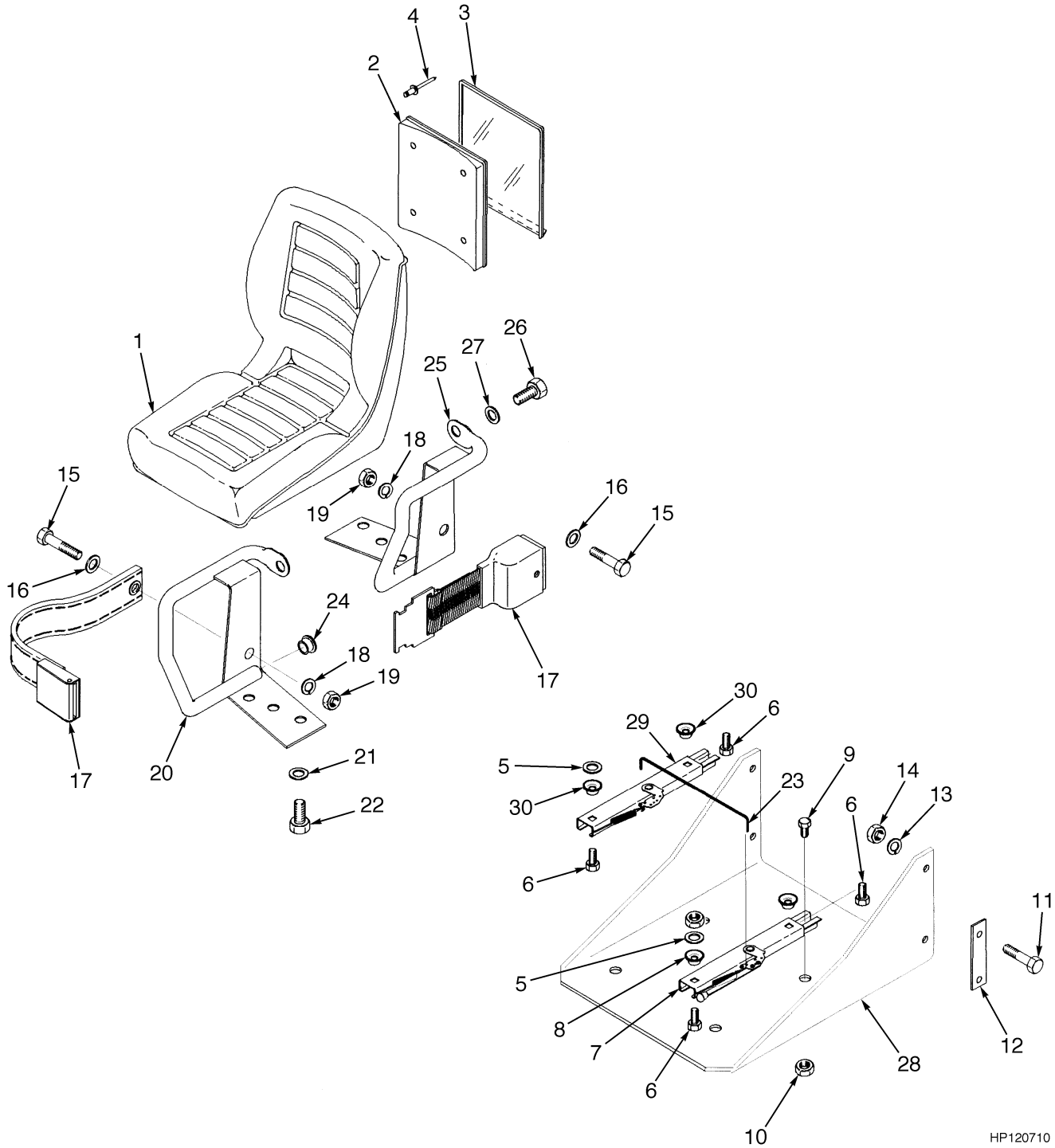


HP990007

GENERAL TRUCK

| ITEM | PART NO. | DESCRIPTION | QTY |
|------|----------|---|-----|
| 1 | | Counterweight (☞ Figure 1-11) | 1 |
| 2 | | Engine Assembly (☞ Figure 2-10) | 1 |
| 3 | | Fuel Assembly (☞ Figure 3-4) | 1 |
| 4 | | Electrical System (☞ Figure 4-1) | 1 |
| 5 | | Transmission (☞ Figure 5-1) | 1 |
| 6 | | Brake System (☞ Figure 7-1) | 1 |
| 7 | | Steering System (☞ Figure 6-1) | 1 |
| 8 | | Hydraulic System (☞ Figure 8-1) | 1 |
| 9 | | Mast-Two Stage Limited Free-Lift (☞ Figure 9-1) | 1 |
| 10 | | Mast-Three Stage Full Free-Lift (☞ Figure 10-1) | 1 |
| 11 | | Optional Equipment (☞ Figure 11-1) | 1 |
| 12 | | Fork (☞ Figure 1-13) | 1 |

NON-SUSPENSION SEAT (Figure 1-2) (⇒PENDING PER ECN 74953)



HP120710

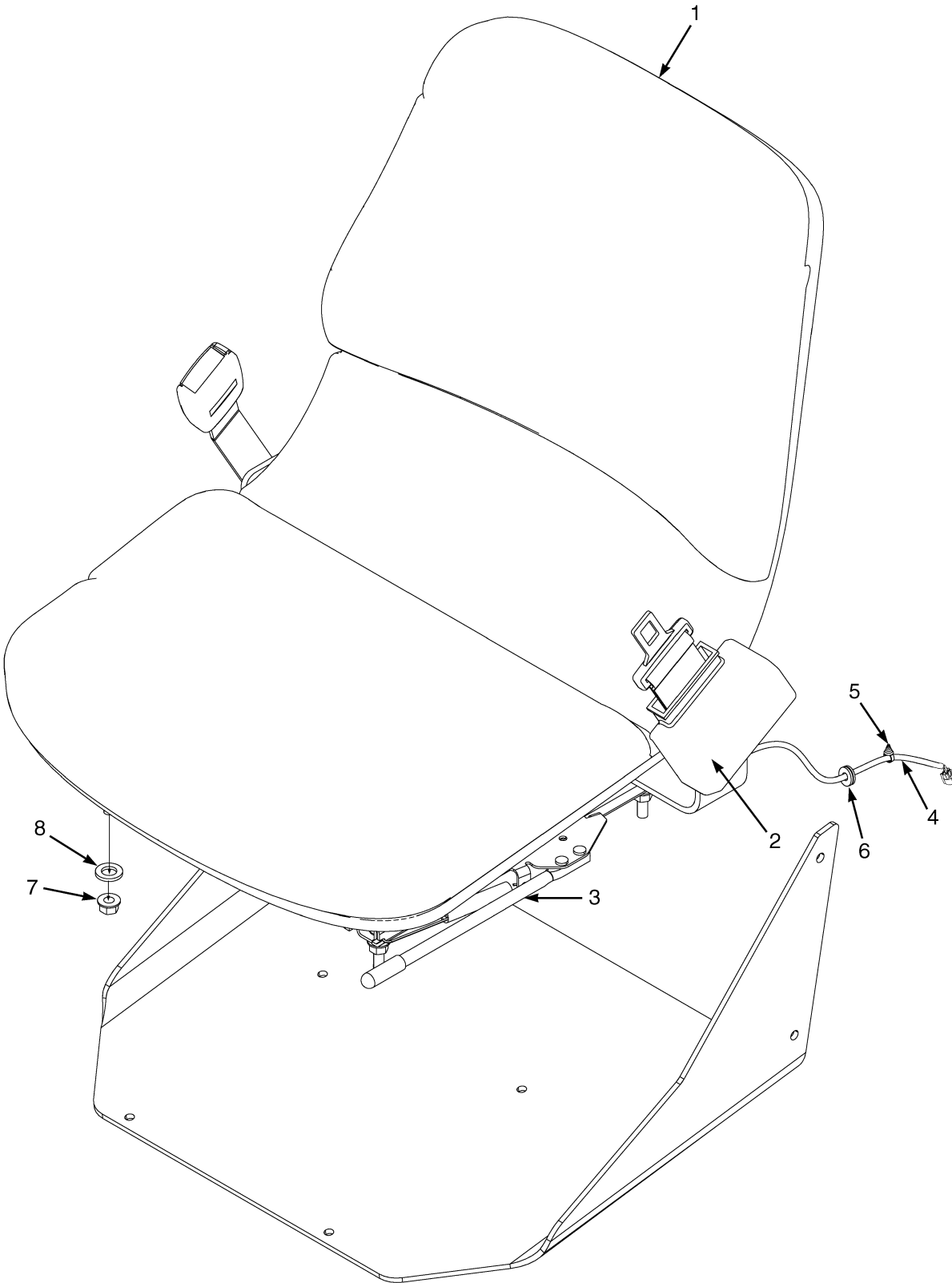
NON-SUSPENSION SEAT
(⇒PENDING PER ECN 74953)

| ITEM | PART NO. | DESCRIPTION | QTY |
|------|-------------------|--------------------------------|-----|
| 1 | 377901 | Seat (Vinyl) | 1 |
| 1 | 364911 | Seat | 1 |
| 2 | 335988 | Base (Information Case) | 1 |
| 3 | 335991 | Cover (Information Case) | 1 |
| 4 | 222029 | Rivet | 4 |
| 5 | 221733 | Washer | 2 |
| 6 | 364914 | Capscrew | 4 |
| 7 | 335553 | Seat Rail | 1 |
| 8 | 204114 | Spacer | 4 |
| 9 | 16836 | Capscrew | 4 |
| 10 | 145639 | Nut | 4 |
| 11 | 287854 | Capscrew | 4 |
| 12 | 385085 | Spacer | 2 |
| 13 | 292682 | Lockwasher | 4 |
| 14 | 136692 | Nut | 4 |
| 15 | 379199 | Capscrew | 2 |
| 16 | 379697 | Washer | 2 |
| 17 | 1374750 | Seat Belt | 1 |
| 18 | 379697 | Washer | 4 |
| 19 | 379698 | Nut | 4 |
| 20 | 364807 | Hip Restraint (RH) | 1 |
| 21 | 18515 | Washer | 4 |
| 22 | 18727 | Capscrew | 4 |
| 23 | 1300107 | Rod | 1 |
| 24 | 364854 | Plug | 2 |
| 25 | 364808 | Hip Restraint (LH) | 1 |
| 26 | 379197 | Capscrew | 2 |
| 27 | 379198 | Washer | 2 |
| 28 | ac 1479677 | Seat Pan | 1 |
| 28 | ad 1607247 | Seat Pan | 1 |
| 28 | bc 1479678 | Seat Pan | 1 |
| 28 | bd 1607246 | Seat Pan | 1 |
| 29 | 383116 | Seat Rail | 1 |
| 30 | 204114 | Spacer | 4 |

FOOTNOTES:

- a** With Cab
- b** Without Cab
- c** ⇒ PENDING PER ECN 74953
- d** PENDING PER ECN 74953 ⇒

NON-SUSPENSION SEAT (Figure 1-3) (PENDING PER ECN 74953⇒)



BP120182

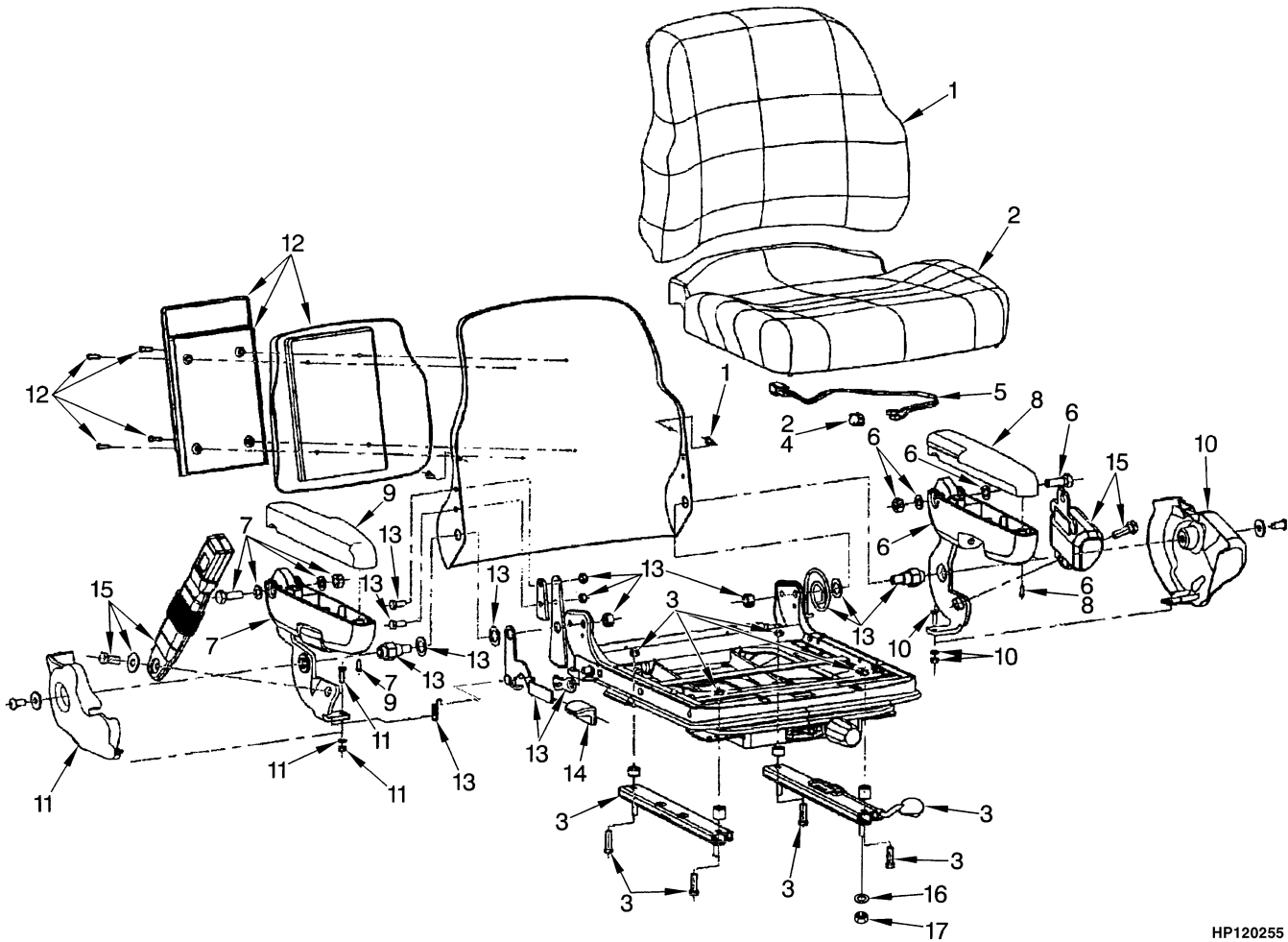
**NON-SUSPENSION SEAT
(PENDING PER ECN 74953⇒)**

| ITEM | PART NO. | DESCRIPTION | QTY |
|------|------------------|-------------------------------------|-----|
| | 1593409 | Non-Suspension Seat (Vinyl)..... | 1 |
| 1 | 1563351 | Cushions (Vinyl) | 1 |
| | a 1563215 | Sensor (Operator Presence) | 1 |
| 2 | 1598504 | Seat Belt Kit..... | 1 |
| 3 | 1459173 | Slide Kit | 1 |
| 4 | 2075429 | Wire Harness | 1 |
| 5 | 1509890 | Clip | 1 |
| 6 | 1561015 | Grommet..... | 2 |
| 7 | 15175 | Washer | 4 |
| 8 | 145639 | Nut | 4 |
| 9 | 1607246 | Seat Pan (With Overhead Guard)..... | 1 |
| 9 | 1607247 | Seat Pan (With Cab)..... | 1 |
| 10 | 287854 | Capscrew..... | 4 |
| 11 | 292682 | Lockwasher..... | 4 |
| 12 | 136692 | Nut | 4 |

FOOTNOTES:

a Not Illustrated

FULL SUSPENSION SEAT (Figure 1-4) SHEET 1 OF 2 (⇒PENDING PER ECN 74953)

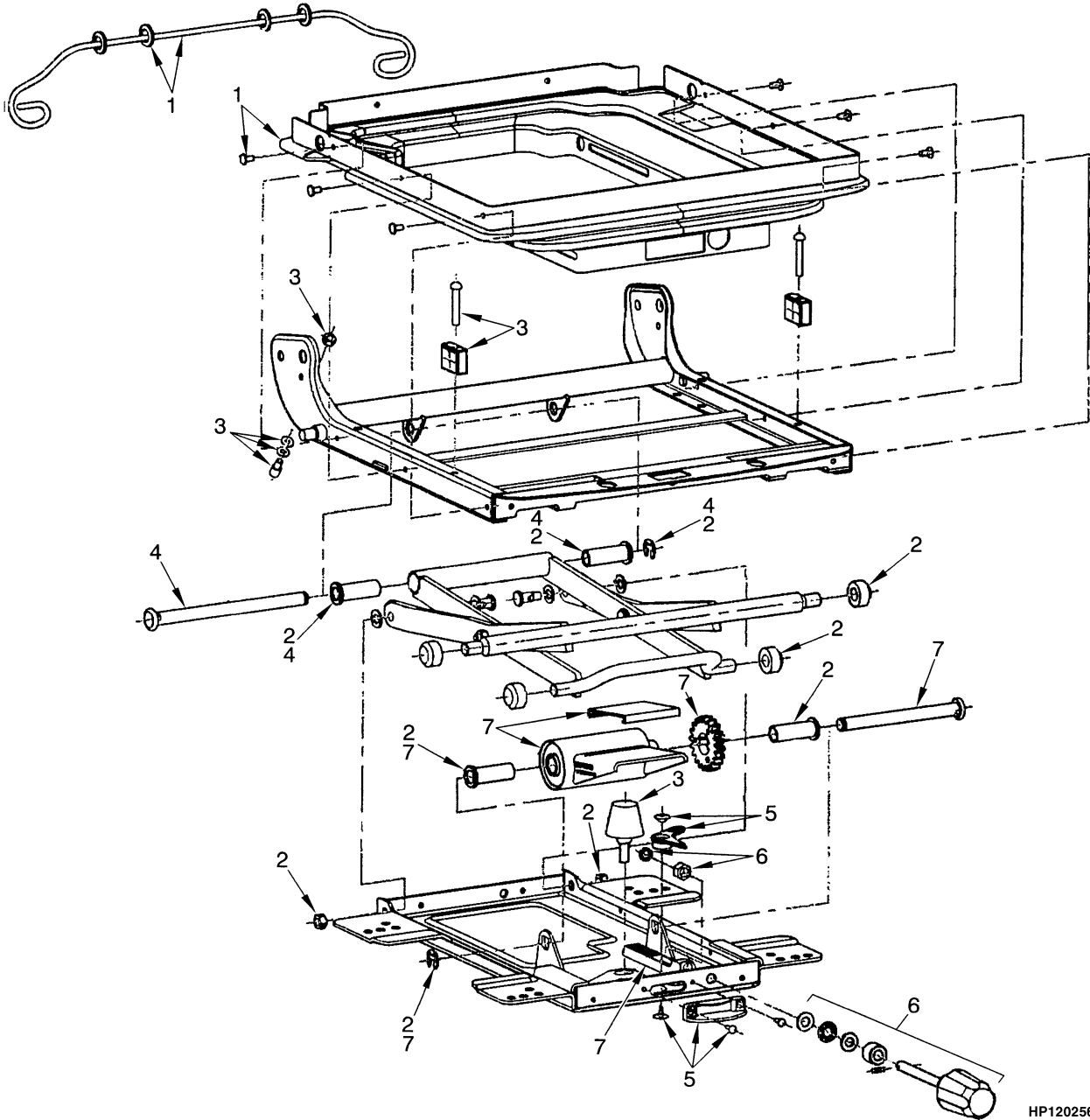


HP120255

**FULL SUSPENSION SEAT
SHEET 1 OF 2
(=>PENDING PER ECN 74953)**

| ITEM | PART NO. | DESCRIPTION | QTY |
|------|----------|---|-----|
| | 1466006 | Full Suspension Seat (Vinyl Cover) | 1 |
| | 1466007 | Full Suspension Seat (Fabric Cover) | 1 |
| 1 | 1467533 | Back Cushion (Vinyl) | 1 |
| 1 | 1467535 | Back Cushion (Fabric) | 1 |
| 2 | 1494076 | Seat Cushion (Vinyl)..... | 1 |
| 2 | 1467536 | Seat Cushion (Fabric) | 1 |
| 3 | 1467513 | Slider Kit | 1 |
| 4 | 1467514 | Switch (Seat) | 1 |
| 5 | 1467515 | Wire Harness | 1 |
| 6 | 1467516 | Armrest (LH) (LH)..... | 1 |
| 7 | 1467517 | Armrest (RH) (RH) | 1 |
| 8 | 1467518 | Cap (LH)..... | 1 |
| 9 | 1467519 | Cap (RH) | 1 |
| 10 | 1467520 | Cover (LH) | 1 |
| 11 | 1467521 | Cover (RH) | 1 |
| 12 | 1467522 | Holder Kit..... | 1 |
| 13 | 1467530 | Recliner Kit..... | 1 |
| 14 | 1467531 | Recliner Knob..... | 1 |
| 15 | 1467532 | Seat Belt Kit..... | 1 |
| 16 | 15175 | Washer | 4 |
| 17 | 145639 | Nut..... | 4 |

FULL SUSPENSION SEAT (Figure 1-5) SHEET 2 OF 2 (⇒PENDING PER ECN 74953)

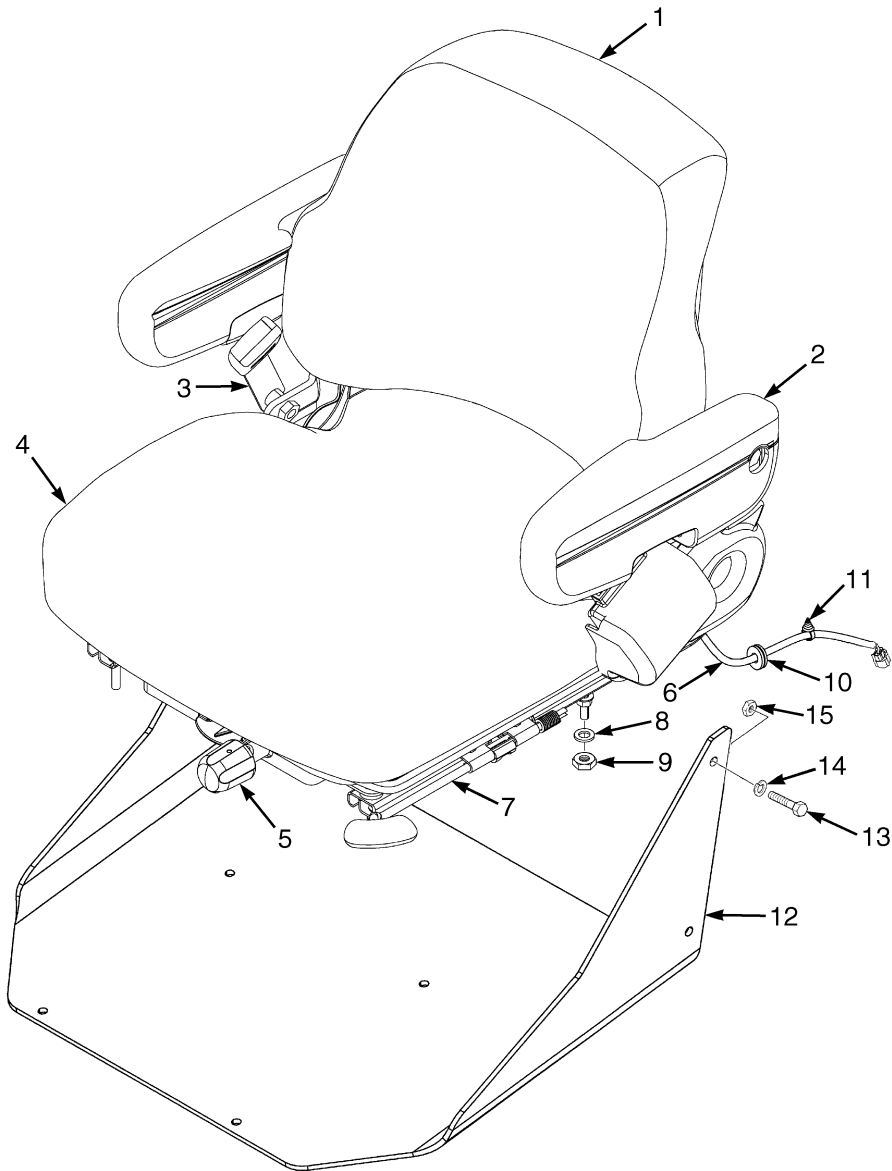


HP120256

**FULL SUSPENSION SEAT
SHEET 2 OF 2
(⇒PENDING PER ECN 74953)**

| ITEM | PART NO. | DESCRIPTION | QTY |
|------|----------|---|-----|
| | 1466006 | Full Suspension Seat (Vinyl Cover) | 1 |
| | 1466007 | Full Suspension Seat (Fabric Cover) | 1 |
| 1 | 1467523 | Boot Kit..... | 1 |
| 2 | 1467524 | Roller and Bearing Kit | 1 |
| 3 | 1467525 | Bumper and Stop Kit | 1 |
| 4 | 1467526 | Bearing Shaft Kit | 1 |
| 5 | 1467527 | Weight Adjuster Indicator Kit | 1 |
| 6 | 1467528 | Knob Kit..... | 1 |
| 7 | 1467529 | Suspension Spring Kit..... | 1 |

FULL SUSPENSION SEAT (Figure 1-6) (PENDING PER ECN 74953⇒)



BP120184

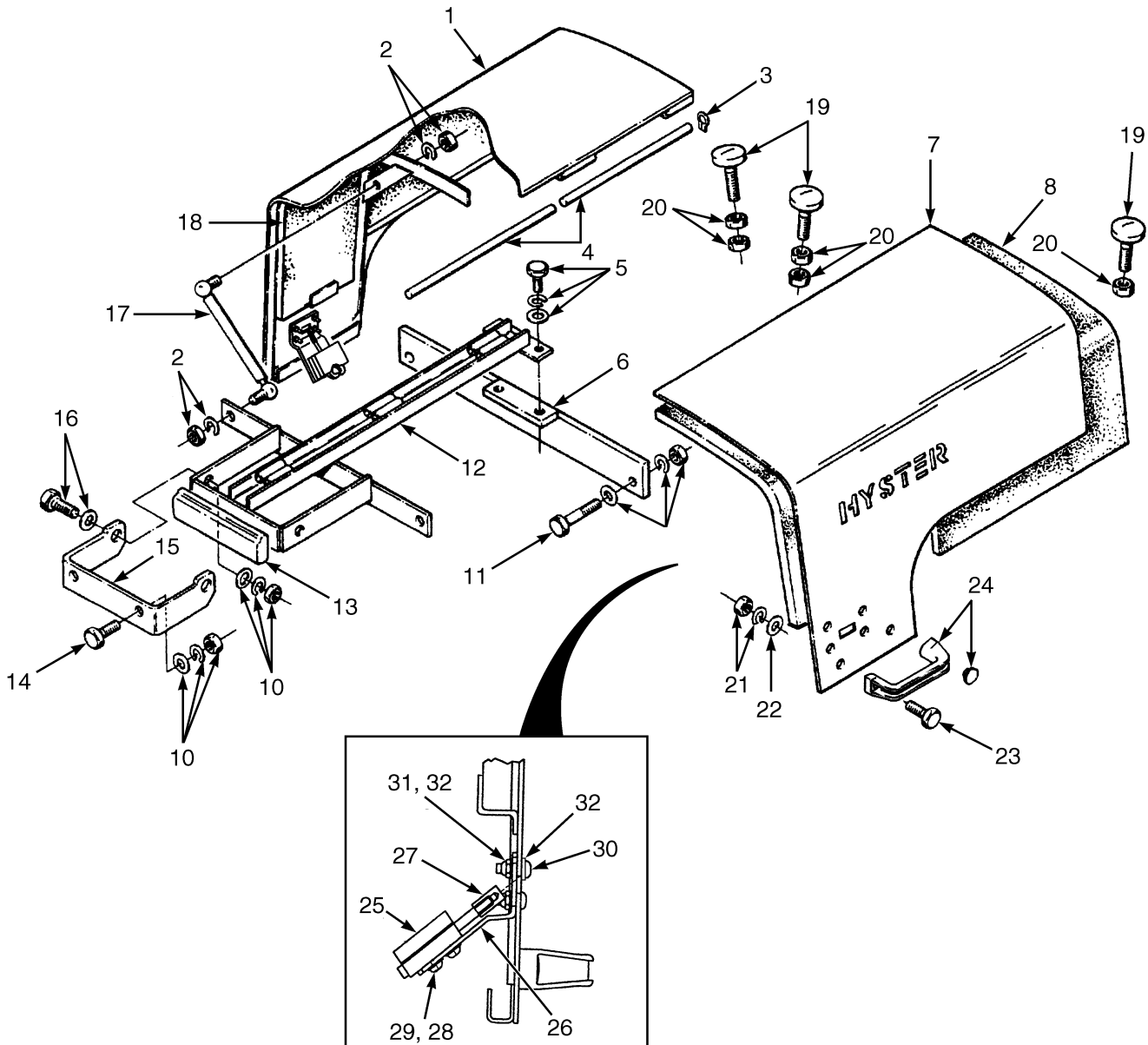
**FULL SUSPENSION SEAT
(PENDING PER ECN 74953⇒)**

| ITEM | PART NO. | DESCRIPTION | QTY |
|------|------------------|-------------------------------------|-----|
| | 1593413 | Full Suspension Seat (Vinyl)..... | 1 |
| 1 | 1470152 | Back Cushion (Vinyl) (Vinyl)..... | 1 |
| 2 | 1563230 | Arm Cushion (LH) | 1 |
| 2 | 1563231 | Arm Cushion (RH)..... | 1 |
| 3 | 1598504 | Seat Belt Kit..... | 1 |
| 4 | 1563207 | Seat Cushion (Vinyl)..... | 1 |
| | a 1563208 | Sensor (Operator Presence) | 1 |
| 5 | 1470163 | Weight Adjuster Kit..... | 1 |
| 6 | 2075429 | Wire Harness | 1 |
| 7 | 1470161 | Slide Kit | 1 |
| | a 1483828 | Shock Kit | 1 |
| 8 | 15175 | Washer | 4 |
| 9 | 145639 | Nut | 4 |
| 10 | 1561015 | Grommet..... | 2 |
| 11 | 1509890 | Clip | 1 |
| 12 | 1607247 | Seat Pan (With Cab)..... | 1 |
| 12 | 1607246 | Seat Pan (With Overhead Guard)..... | 1 |
| 13 | 287854 | Capscrew..... | 4 |
| 14 | 292682 | Lockwasher..... | 4 |
| 15 | 136692 | Nut | 4 |

FOOTNOTES:

a Not Illustrated

HOOD (Figure 1-7)



HP120271

HOOD

| ITEM | PART NO. | DESCRIPTION | QTY |
|------|----------|-------------------|-----|
| 1 | 1392568 | Hood (RH) | 1 |
| 2 | 1569425 | Nut | 4 |
| 2 | 292681 | Lockwasher..... | 4 |
| 3 | 367228 | Ring | 4 |
| 4 | 367227 | Pin | 2 |
| 5 | 136985 | Capscrew..... | 2 |
| 5 | 292682 | Lockwasher..... | 2 |
| 5 | 296421 | Washer | 2 |
| 6 | 367233 | Crossmember | 1 |
| 7 | 1392566 | Hood (LH) | 1 |
| 8 | 377624 | Liner..... | 2 |
| 9 | 1392558 | Liner (LH)..... | 1 |
| 10 | 136692 | Nut | 6 |
| 10 | 292682 | Lockwasher..... | 6 |
| 10 | 296421 | Washer | 6 |
| 11 | 292519 | Capscrew..... | 2 |
| 12 | 367235 | Channel | 1 |
| 13 | 261165 | Tape | AR |
| 14 | 136985 | Capscrew..... | 2 |
| 15 | 377350 | Bracket..... | 1 |
| 16 | 287860 | Capscrew..... | 2 |
| 16 | 296421 | Washer | 2 |
| 17 | 353021 | Gas Spring..... | 2 |
| 18 | 1392560 | Liner (RH) | 1 |
| 19 | 367251 | Stop Screw | 4 |
| 20 | 15055 | Nut | 6 |
| 21 | 136687 | Nut | 4 |
| 21 | 292680 | Lockwasher..... | 4 |
| 22 | 320156 | Washer | 4 |
| 23 | 292501 | Capscrew..... | 4 |
| 24 | 362030 | Handle | 2 |
| 25 | 1377478 | Latch | 2 |
| 26 | 1392570 | Plate | 2 |
| 27 | 1392571 | Knob | 2 |
| 28 | 296161 | Capscrew..... | 8 |
| 29 | 292680 | Lockwasher..... | 8 |
| 30 | 296159 | Capscrew..... | 8 |
| 31 | 316834 | Nut | 8 |
| 32 | 1476421 | Washer | 4 |



Suggest:

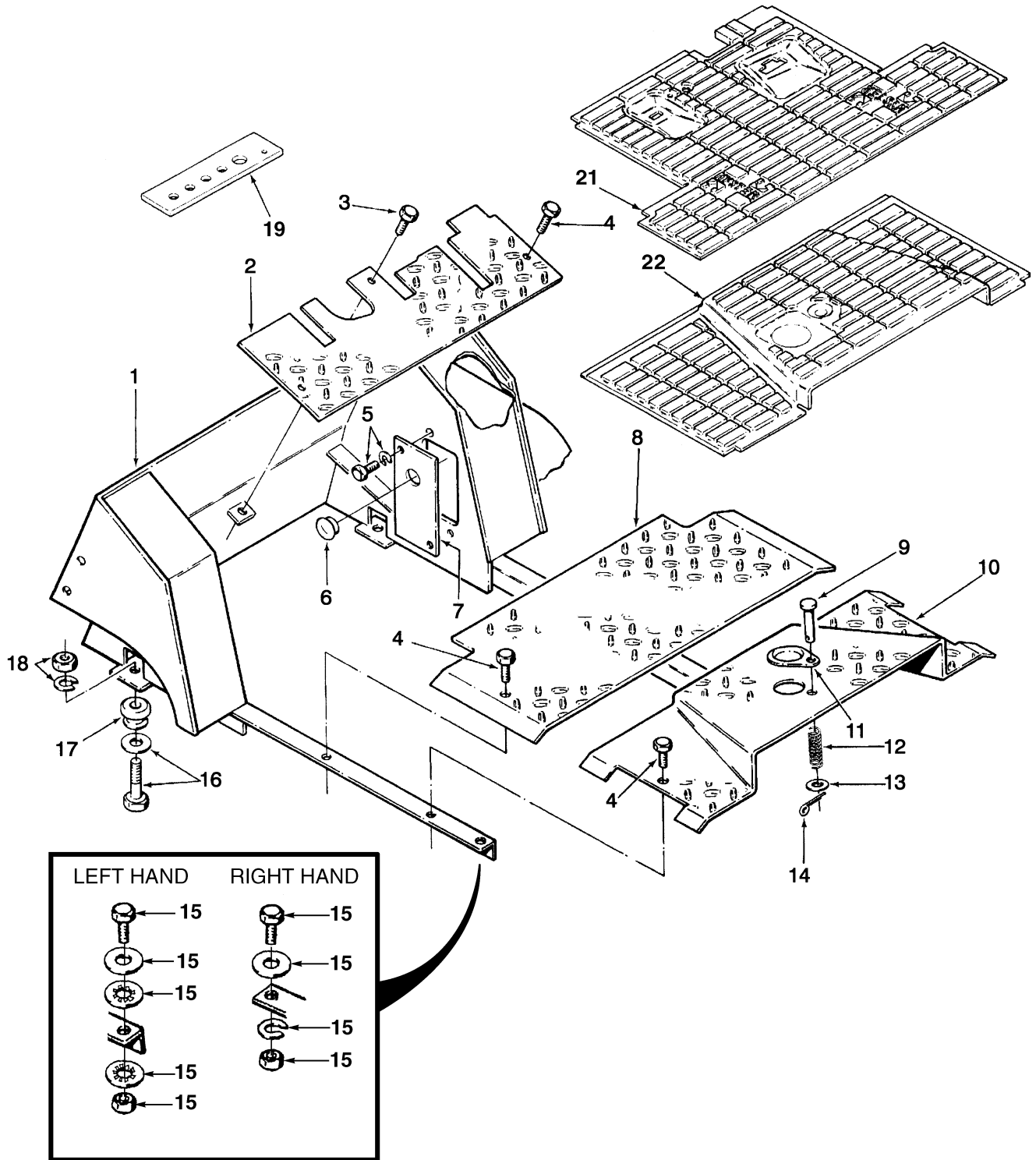
For more complete manuals. Please go to the home page.

<https://www.ebooklibonline.com>

If the above button click is invalid. Please download this document first, and then click the above link to download the complete manual.

Thank you so much for reading

COWL AND FLOOR PLATES (Figure 1-8)



BP120058

COWL AND FLOOR PLATES

| ITEM | PART NO. | DESCRIPTION | QTY |
|------|------------------|-----------------------------|-----|
| 1 | 1346710 | Cowl..... | 1 |
| 2 | 1466348 | Floorplate..... | 1 |
| 3 | 329067 | Screw..... | 1 |
| 4 | 329067 | Screw..... | 6 |
| 5 | 136681 | Capscrew..... | 4 |
| 5 | 292681 | Lockwasher..... | 4 |
| 6 | 374002 | Plug | 2 |
| 7 | 342980 | Plate | 2 |
| 8 | 357276 | Floorplate..... | 1 |
| 9 | b 177590 | Rod End Pin | 1 |
| 10 | b 357273 | Floorplate..... | 1 |
| 11 | b 313815 | Plate | 1 |
| 12 | b 137122 | Spring | 1 |
| 13 | b 320157 | Washer | 2 |
| 14 | b 15212 | Cotter Pin..... | 1 |
| 15 | 136692 | Nut | 2 |
| 15 | 136985 | Capscrew..... | 2 |
| 15 | 292682 | Lockwasher (RH)..... | 1 |
| 15 | 296361 | Washer (LH) | 2 |
| 15 | 320159 | Washer | 2 |
| 16 | 292533 | Capscrew..... | 2 |
| 16 | 300939 | Washer | 2 |
| 17 | 129962 | Mount..... | 2 |
| 18 | 216877 | Nut | 2 |
| 18 | 292683 | Lockwasher..... | 2 |
| 19 | 1479752 | Seal | 1 |
| 20 | 370278 | Seal (Not Illustrated)..... | 1 |
| 21 | a 1312722 | Floormat (Front)..... | 1 |
| 21 | b 1312722 | Floormat (Front)..... | 1 |
| 22 | a 369525 | Floormat (Rear) | 1 |
| 22 | b 374004 | Floormat (Rear) | 1 |

FOOTNOTES:

- a** With Cab
b Without Cab

<https://www.ebooklibonline.com>

Hello dear friend!

Thank you very much for reading.

Enter the link into your browser.

The full manual is available for immediate download.

<https://www.ebooklibonline.com>