

PARTS MANUAL

CHALLENGER

**H13.00-16.00XM H10.00-
12.000XM-12EC
(F019)**

CUSTOMER EDITION

HYSTER

SECTIONS

1	FRAME
2	ENGINES
3	FUEL SYSTEM
4	ELECTRICAL SYSTEM
5	TRANSMISSION
6	DRIVE AXLE
7	STEERING SYSTEM
8	BRAKE SYSTEM
9	HYDRAULIC SYSTEM
10	MAST-TWO STAGE LIMITED FREE-LIFT
11	MAST-THREE STAGE FULL FREE-LIFT
12	EMPTY CONTAINER HANDLER
13	ATTACHMENTS
14	OPTIONS
15	NUMERICAL INDEX

TABLE OF CONTENTS

DESCRIPTION	PAGE
A	
ACCUMULATOR	8-16
PISTON TYPE	9-10
ACCUMULATOR CHARGE VALVE	8-12
AIR COMPRESSOR	
PERKINS	
SHEET 1 OF 2	2-34
SHEET 2 OF 2	2-36
AIR COMPRESSOR AND ATTACHING PARTS	
PERKINS	2-32
AIR CONDITIONING SYSTEM	
CUMMINS.....	1-32
PERKINS	1-30
AIR CROSSOVER CONNECTION	
CUMMINS.....	2-150
AIR DRYER AND ATTACHING PARTS	2-26
AIR DRYER ASSEMBLY	
SHEET 1 OF 2.....	2-28
SHEET 2 OF 2.....	2-30
AIR DUCT AND ACCESSORIES	
CAB.....	1-66
AIR FILTER	
WITHOUT ASPIRATED PRE-CLEANER	
CUMMINS	3-36
PERKINS.....	3-34
AIR HEATER STARTING AID	
CUMMINS.....	2-118
ALARM	14-18
ALTERNATOR AND MOUNTING	
CUMMINS.....	4-24
ALTERNATOR AND PULLEY	
PERKINS	4-22
ALTERNATOR BRACKET AND ATTACHING PARTS	
PERKINS	4-20
ARMREST	
PIVOT-UP	1-58
AUXILIARY DRIVE GEAR	
PERKINS	2-66
AUXILIARY PUMP COVER	
WET BRAKE	
CUMMINS.....	2-137
AUXILIARY PUMP DRIVE	
⇒S/N F019E01593B (CUMMINS), ⇒S/N F019E01601B (PERKINS)	5-34
S/N F019E01594B⇒ (CUMMINS), S/N F019E01602B⇒ (PERKINS)	5-36
AXLE HOUSING AND ATTACHING PARTS.....	6-10
B	
BELT TENSIONER	
CUMMINS.....	2-163
BLANKING PLATE AND PLUGS	
PERKINS	2-70
BLANKING PLUG, OIL FEED AND HOSES	

<https://www.ebooklibonline.com>

Hello dear friend!

Thank you very much for reading.

Enter the link into your browser.

The full manual is available for immediate download.

<https://www.ebooklibonline.com>

TABLE OF CONTENTS (Continued)

DESCRIPTION	PAGE
B (continued)	
PERKINS	2-68
BRAKE ASSEMBLY	
DRY BRAKE	8-20
WET BRAKE	8-18
BRAKE CHAMBER	8-22
BRAKE SYSTEM	
DRY	8-2
WET	8-6
BRAKE VALVE	
DRY BRAKE	8-26
WET BRAKE	8-24
C	
CAB AND ATTACHING PARTS	1-12
CAB AND TILT CYLINDER MOUNTING	1-20
CAB HARDWARE AND CONTROL COVER	1-60
CAB HEATER PLUMBING	
DRY BRAKE	
CUMMINS	2-146
CAB MOUNTED DRIVE LIGHTS	14-14
CAM FOLLOWER COVER	
CUMMINS	2-122
CAMSHAFT	
CUMMINS	2-110
CAMSHAFT AND ROCKER ASSEMBLY	
PERKINS	2-48
CARRIAGE	
FOUR, FIVE, AND SIX FUNCTION	10-26
THREE STAGE FULL FREE-LIFT	11-16
INDIVIDUAL FORK POSITIONER (FOUR FUNCTION)	10-28
THREE STAGE FULL FREE-LIFT	11-18
SIMULTANEOUS FORK POSITIONER	10-32
SIMULTANEOUS FORK POSITIONER (THREE FUNCTION)	
THREE STAGE FULL FREE-LIFT	11-20
THREE FUNCTION	10-24
THREE STAGE FULL FREE-LIFT	11-14
CHARGE PUMP AND FILTER ASSEMBLY	5-18
CONDENSER	1-44
CONTAINER ATTACHMENT INSTALLATION	12-6
CONTROL LEVER	9-24
CONTROL PANEL	
AIR CONDITIONER	4-12
HEATER	4-10
CONTROL VALVE	9-18
CONTROL VALVE ASSEMBLY	5-12
CONTROL VALVE MOUNT	5-16
COOLING	
CUMMINS	2-16
PERKINS	2-12

TABLE OF CONTENTS (Continued)

DESCRIPTION	PAGE
C (continued)	
COUNTERWEIGHT	1-8
CRANKCASE BREATHER	
CUMMINS.....	2-120
CRANKSHAFT AND MAIN BEARINGS	
CUMMINS.....	2-104
PERKINS	2-44
CYLINDER BLOCK	
CUMMINS.....	2-100
PERKINS	2-38
CYLINDER HEAD	
CUMMINS.....	2-102
PERKINS	2-40
CYLINDER HEAD COVER	
PERKINS	2-42
D	
DASH DISPLAY	1-68
DC-DC CONVERTER AND ATTACHING PARTS.....	4-14
DIFFERENTIAL AND CARRIER	
DRY BRAKE	6-6
WET BRAKE.....	6-2
DIRECTIONAL CONTROL VALVE	13-34
DRIVE GEAR	5-32
DRIVE PLATE.....	5-50
E	
ELECTRIC PUMP	1-28
ELECTRICAL SYSTEM	
CUMMINS.....	4-6
PERKINS	4-2
SERIES 553	
250 MM (10 IN.) SIDE-SHIFT	12-42
SERIES 555.....	12-44
SERIES 558	
250 MM (10 IN.) SIDE-SHIFT	12-46
ELECTRONIC CONTROL MODULE AND MOUNTING	
PERKINS	2-88
ELECTRONIC LEVER ASSEMBLY	
THREE, FOUR, FIVE, AND SIX FUNCTION.....	9-28
WITH CLAMP ATTACHMENT.....	9-30
END BEAM ASSEMBLY	
SERIES 553	
250 MM (10 IN.) SIDE-SHIFT	12-14
SERIES 555.....	12-16
SERIES 558	
250 MM (10 IN.) SIDE-SHIFT	12-18
ENGINE ASSEMBLY	
CUMMINS.....	2-98
PERKINS	2-6

TABLE OF CONTENTS (Continued)

DESCRIPTION	PAGE
E (continued)	
ENGINE BLOCK HEATER	
CUMMINS.....	2-24
PERKINS	2-22
ENGINE CONTROL SYSTEM	
CUMMINS.....	2-114
ENGINE LIFTING EYES	
PERKINS	2-86
ENGINE MOUNT	
CUMMINS.....	2-20
PERKINS	2-19
ENGINE OIL COOLER	
CUMMINS.....	2-140
EXHAUST	
CUMMINS.....	2-10
PERKINS	2-8
EXHAUST MANIFOLD	
CUMMINS.....	2-149
EXTENSION CYLINDER AND ATTACHING PARTS	
SERIES 553, 558	
250 MM (10 IN.) SIDE-SHIFT	12-22
SERIES 555.....	12-26
F	
FAN DRIVE	
CUMMINS.....	2-130
FAN DRIVE AND PULLEY	
PERKINS	2-64
FLOOR PLATES AND COVERS	1-10
FLYWHEEL	
CUMMINS.....	2-134
FLYWHEEL AND STARTER RING	
PERKINS	2-96
FLYWHEEL HOUSING	
CUMMINS.....	2-132
PERKINS	2-94
FORK.....	10-38
FORK POSITIONER CYLINDER	10-36
FORWARD CLUTCH.....	5-30
FREE-LIFT CYLINDER	
THREE STAGE FULL FREE-LIFT	11-10
FRONT DRIVE PULLEY	
PERKINS	2-62
FRONT GEAR COVER	
CUMMINS.....	2-135
FRONT GEAR HOUSING	
CUMMINS.....	2-116
FRONT GEAR TRAIN	
WET BRAKE	
CUMMINS	2-126

TABLE OF CONTENTS (Continued)

DESCRIPTION	PAGE
F (continued)	
FRONT, BRAKE AND BACK-UP LIGHTS	14-8
FUEL FILTER	
CUMMINS.....	3-22
FUEL FILTER ASSEMBLY	
PERKINS	3-18
FUEL FILTER PLUMBING	
CUMMINS.....	3-24
FUEL INJECTION PUMP	
CUMMINS.....	3-26
FUEL INJECTION PUMP AND GEAR	
PERKINS	3-8
FUEL INJECTION SUPPLY AND RETURN LINES	
PERKINS	3-12
FUEL INJECTOR PLUMBING	
CUMMINS.....	3-32
FUEL PLUMBING	
CUMMINS.....	3-30
FUEL PUMP MOUNTING	
CUMMINS.....	3-27
FUEL STRAINER	
CUMMINS.....	3-29
FUEL SYSTEM	
CUMMINS.....	3-4
PERKINS	3-2
FUEL TRANSFER PUMP	
CUMMINS.....	3-28
G	
GEAR CLUTCH INSTALLATION	5-38
GENERAL TRUCK	1-2
H	
HAND HOLE COVER	
DRY BRAKE	
CUMMINS	2-148
WET BRAKE	
CUMMINS	2-147
HAND PUMP	
CAB TILT.....	1-26
HEADER HOSE	
EMPTY CONATAINER HANDLER.....	12-2
S/N F019E01682B⇒	10-44
THREE STAGE FULL FREE-LIFT	11-12
TWO STAGE LIMITED FREE-LIFT	
⇒S/N F019E01681B.....	10-40
HEATER AND AIR CONDITIONER ASSEMBLY.....	1-42
HEATER AND AIR CONDITIONER ATTACHMENT	1-38
HEATER ARRANGEMENT	1-34
HEATER ASSEMBLY	1-40

TABLE OF CONTENTS (Continued)

DESCRIPTION	PAGE
H (continued)	
HEATER HOSE ARRANGEMENT	
CUMMINS.....	1-36
HIGH PRESSURE FUEL PIPES	
PERKINS	3-10
HOOD.....	1-4
HUB AND SHAFT ASSEMBLY	
DRY BRAKE	6-14
WET BRAKE.....	6-12
HYDRAULIC CONTROL AND TWISTLOCK	
EMPTY CONTAINER HANDLER.....	1-62
HYDRAULIC PUMP.....	9-16
WET BRAKE	
PERKINS.....	8-10
HYDRAULIC SUPPLY AND RETURN.....	9-2
HYDRAULIC SYSTEM	
SERIES 553	
250 MM (10 IN.) SIDE-SHIFT	12-36
SERIES 555.....	12-38
SERIES 558	
250 MM (10 IN.) SIDE-SHIFT	12-40
HYDRAULIC TANK AND ATTACHING PARTS.....	9-6
HYDRAULIC VALVE AND ATTACHING PARTS.....	9-12
I	
IDLER GEAR	
PERKINS	2-60
IDLER SHAFT	
REVERSE.....	5-28
INCHING PEDAL AND ACCESSORIES	
CAB.....	1-64
INJECTOR	
CUMMINS.....	3-6
INNER MAST	
⇒S/N F019E01681B	10-6
S/N F019E01682B⇒	10-8
J	
JOYSTICK CONTROL.....	9-22
L	
LABELS.....	1-70
LIFT	
⇒S/N F019E01681B	10-10
S/N F019E01682B⇒	10-14
LIFT ACCUMULATOR AND ATTACHING PARTS	9-8
LIFT CYLINDER	
EMPTY CONATAINER HANDLER.....	10-22
NON-EC	
⇒S/N F019E01681B.....	10-18

TABLE OF CONTENTS (Continued)

DESCRIPTION	PAGE
L (continued)	
S/N F019E01682B⇒.....	10-20
LIFT PUMP AND FUEL FILTER LINES	
PERKINS.....	3-14
LIFT PUMP ASSEMBLY	
PERKINS.....	3-16
LIFTING BRACKET	
CUMMINS.....	2-136
LIFTING EYES.....	14-16
LOW CLUTCH.....	5-24
M	
MAIN FRAME	
SERIES 553, 555, 558	
250 MM (10 IN.) SIDE-SHIFT.....	12-10
SERIES 555	
600 MM (23.6 IN.) SIDE-SHIFT.....	12-12
MAIN LIFT CYLINDER	
THREE STAGE FULL FREE-LIFT.....	11-9
MANIFOLDS	
PERKINS.....	2-58
MAST AND REAR WORK LIGHTS.....	14-6
MAST ASSEMBLY	
THREE STAGE FULL FREE-LIFT	
SHEET 1 OF 3.....	11-2
SHEET 2 OF 3.....	11-4
SHEET 3 OF 3.....	11-6
MAST INSTALLATION.....	9-36
MONOTROL PEDAL.....	3-42
O	
OIL COOLER.....	8-14
OIL COOLER AND CONNECTIONS	
PERKINS.....	2-76
OIL FILTER	
CUMMINS.....	2-144
OIL FILTER AND ATTACHING PARTS	
PERKINS.....	2-74
OIL LEVEL GAUGE	
CUMMINS.....	2-142
OIL PAN	
CUMMINS.....	2-138
OIL PUMP	
CUMMINS.....	2-145
OIL PUMP AND DELIVERY HOUSING	
PERKINS.....	2-72
OIL SUMP	
PERKINS.....	2-56
OUTER MAST	
⇒S/N F019E01681B.....	10-2

TABLE OF CONTENTS (Continued)

DESCRIPTION	PAGE
O (continued)	
S/N F019E01682B⇒	10-4
OUTPUT FLANGE	5-52
OUTPUT SHAFT	5-20
P	
PARK BRAKE	
WET BRAKE	6-16
PICK-UP SENSORS	
PERKINS	2-92
PILOT VALVE	9-20
PISTON AND CONNECTING ROD	
CUMMINS	2-108
PERKINS	2-46
R	
REVERSE AND SECOND CLUTCH	5-26
ROCKER LEVERS	
CUMMINS	2-112
ROTATING BEACON	14-12
S	
SEAT ASSEMBLY	
AIR	1-46
MECHANICAL	1-48
SIDE-SHIFT CARRIAGE	
FOUR, FIVE, AND SIX FUNCTION	
THREE STAGE FULL FREE-LIFT	13-18
TWO STAGE LIMITED FREE-LIFT	13-4
INDIVIDUAL FORK POSITIONER (FIVE FUNCTION)	
THREE STAGE FULL FREE-LIFT	13-22
TWO STAGE LIMITED FREE-LIFT	13-8
SIMULTANEOUS FORK POSITIONER (FOUR FUNCTION)	
THREE STAGE FULL FREE-LIFT	13-26
TWO STAGE LIMITED FREE-LIFT	13-12
THREE FUNCTION	
THREE STAGE FULL FREE-LIFT	13-16
TWO STAGE LIMITED FREE-LIFT	13-2
SIDE-SHIFT CYLINDER	
SERIES 553, 555	
250 MM (10 IN.) SIDE-SHIFT	12-28
SERIES 555	
600 MM (23.6 IN.) SIDE-SHIFT	12-29
SERIES 558	
250 MM (10 IN.) SIDE-SHIFT	12-30
THREE STAGE FULL FREE-LIFT	13-32
TWO STAGE LIMITED FREE-LIFT	13-30
STARTER MOTOR	
CUMMINS	4-18
PERKINS	4-16

TABLE OF CONTENTS (Continued)

DESCRIPTION	PAGE
S (continued)	
STEEL DOOR	
LEFT HAND.....	1-18
RIGHT HAND.....	1-16
STEERING AXLE.....	7-8
STEERING COLUMN.....	7-4
STEERING COLUMN ASSEMBLY.....	7-6
STEERING CYLINDER.....	7-12
STEERING SYSTEM.....	7-2
T	
THERMOSTAT	
CUMMINS.....	2-128
THERMOSTAT AND WATER OUTLET HOUSING	
PERKINS.....	2-78
THERMOSTAT HOUSING	
CUMMINS.....	2-152
THIRD CLUTCH.....	5-22
THROTTLE PEDAL LINKAGE	
FORWARD AND REVERSE LEVER.....	3-40
MONOTROL PEDAL.....	3-38
TILT CYLINDER.....	9-34
CAB.....	1-24
TILT CYLINDER AND ATTACHING PARTS.....	9-32
TIMING CASE	
PERKINS.....	2-50
TIMING COVER	
PERKINS.....	2-52
TIMING GEAR	
PERKINS.....	2-54
TIRE AND WHEEL	
11.00 X 20	
14 PLY.....	14-2
12.00 X 20	
18 PLY.....	14-3
SOLID.....	14-4
TORQUE CONVERTER ASSEMBLY	
CUMMINS	
⇒S/N F019E01593B.....	5-44
S/N F019E01594B⇒.....	5-46
⇒S/N F019E01601B.....	5-40
S/N F019E01602B⇒.....	5-42
TORQUE CONVERTER HOUSING AND ATTACHING PARTS.....	5-6
TRAINING SEAT.....	1-54
TRANSMISSION CASE	
⇒S/N F019E01593B (CUMMINS), ⇒S/N F019E01601B (PERKINS).....	5-8
S/N F019E01594B⇒ (CUMMINS), S/N F019E01602B⇒ (PERKINS).....	5-10
TRANSMISSION MOUNT AND ATTACHING PARTS	
CUMMINS.....	5-4
PERKINS.....	5-2

TABLE OF CONTENTS (Continued)

DESCRIPTION	PAGE
T (continued)	
TURBINE SHAFT AND STATOR SUPPORT	5-48
TURBO DRAIN PIPE AND BLANKING PLATE	
PERKINS	2-84
TURBOCHARGER	
CUMMINS.....	2-153
TURBOCHARGER AND ATTACHING PARTS	
PERKINS	2-82
TURBOCHARGER OIL PLUMBING	
CUMMINS.....	2-156
TWIST LOCK CYLINDER	
SERIES 558	
250 MM (10 IN.) SIDE-SHIFT	12-31
V	
VALVE ASSEMBLY	
SERIES 553, 555, 558	
END BEAM.....	12-34
SIDE-SHIFT	12-32
VALVE COVER	
CUMMINS.....	2-158
VALVE TAPPET	
CUMMINS.....	2-106
VIBRATION DAMPER	
CUMMINS.....	2-124
W	
WATER INLET CONNECTION	
CUMMINS.....	2-160
WATER PUMP	
CUMMINS.....	2-162
PERKINS	2-80
WATER SEPERATOR	
PERKINS	3-20
WEAR PADS	
SERIES 553, 555, 558.....	12-8
WINDOW WASHER AND ARMREST ASSEMBLY	1-56
WIRE HARNESS	
ARMREST	
WITH CLOSED CAB	4-34
WITH OPEN CAB.....	4-36
CAB ACCESSORIES.....	4-40
CAB TILT.....	4-38
CLOSED CAB.....	4-28
ECH - CAB TO MAST	4-46
ELECTRONIC CONTROL MODULE	
CUMMINS	4-26
FRONT END EQUIPMENT	
ECH-4.....	4-48
OPEN CAB	4-30

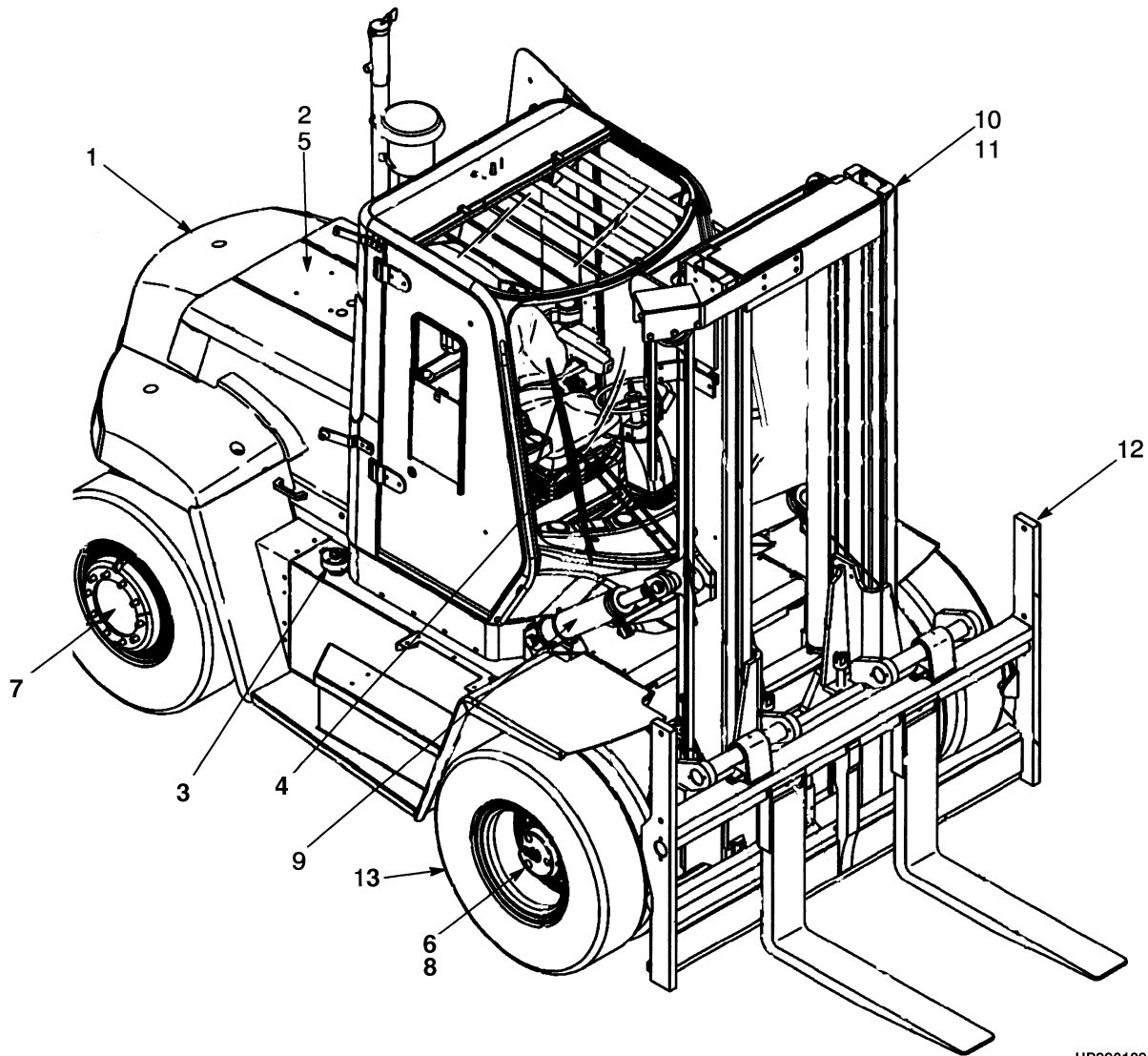
TABLE OF CONTENTS (Continued)

DESCRIPTION	PAGE
W (continued)	
REAR WIPER	4-32
STEERING COLUMN	4-42
TWO STAGE LIMITED FREE-LIFT	4-44
WIRING LOOMS	
PERKINS	2-90

SECTION 1
FRAME

DESCRIPTION	PAGE
AIR CONDITIONING SYSTEM	
CUMMINS.....	1-32
PERKINS	1-30
AIR DUCT AND ACCESSORIES	
CAB.....	1-66
ARMREST	
PIVOT-UP	1-58
CAB AND ATTACHING PARTS	1-12
CAB AND TILT CYLINDER MOUNTING.....	1-20
CAB HARDWARE AND CONTROL COVER.....	1-60
CONDENSER.....	1-44
COUNTERWEIGHT	1-8
DASH DISPLAY	1-68
ELECTRIC PUMP	1-28
FLOOR PLATES AND COVERS	1-10
GENERAL TRUCK	1-2
HAND PUMP	
CAB TILT.....	1-26
HEATER AND AIR CONDITIONER ASSEMBLY.....	1-42
HEATER AND AIR CONDITIONER ATTACHMENT	1-38
HEATER ARRANGEMENT	1-34
HEATER ASSEMBLY	1-40
HEATER HOSE ARRANGEMENT	
CUMMINS.....	1-36
HOOD.....	1-4
HYDRAULIC CONTROL AND TWISTLOCK	
EMPTY CONTAINER HANDLER.....	1-62
INCHING PEDAL AND ACCESSORIES	
CAB.....	1-64
LABELS.....	1-70
SEAT ASSEMBLY	
AIR.....	1-46
MECHANICAL	1-48
STEEL DOOR	
LEFT HAND.....	1-18
RIGHT HAND.....	1-16
TILT CYLINDER	
CAB.....	1-24
TRAINING SEAT	1-54
WINDOW WASHER AND ARMREST ASSEMBLY	1-56

GENERAL TRUCK (Figure 1-1)

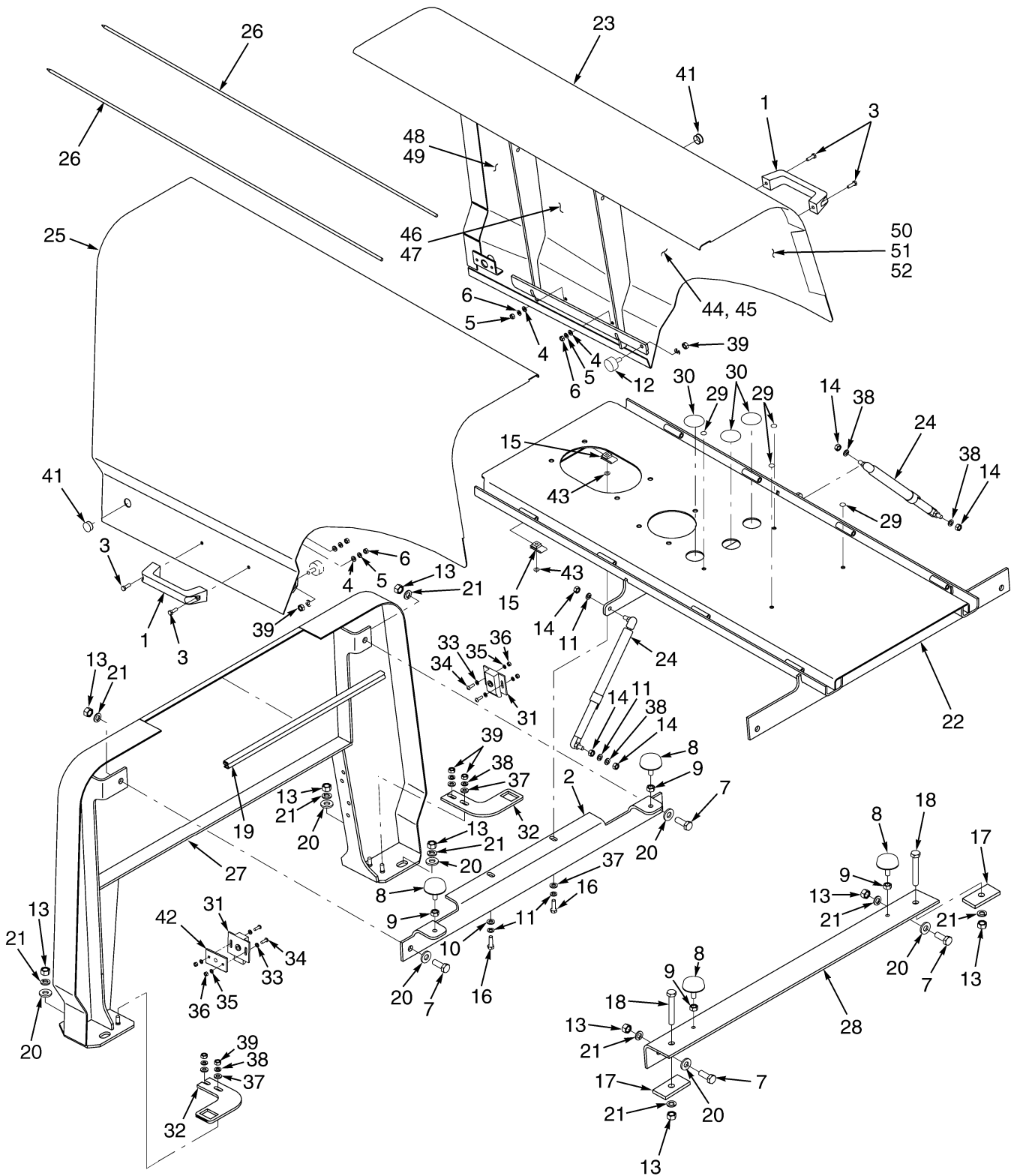


HP990129

GENERAL TRUCK

ITEM	PART NO.	DESCRIPTION	QTY
1	Frame (☞ Figure 1-2)	1
2	Engine Assembly (☞ Figure 2-1)	1
3	Fuel System (☞ Figure 3-1)	1
4	Electrical System (☞ Figure 4-1)	1
5	Transmission (☞ Figure 5-1)	1
6	Drive Axle (☞ Figure 6-1)	1
7	Steering System (☞ Figure 7-1)	1
8	Brake System (☞ Figure 8-1)	1
9	Hydraulic System (☞ Figure 9-1)	1
10	Mast-Two Stage Limited Free-Lift (☞ Figure 10-1)	1
11	Empty Container Attachments (☞ Figure 12-2)	1
12	Attachments (☞ Figure 13-1)	1
13	Options (☞ Figure 14-1)	1
14	Numerical Index.....	1

HOOD (Figure 1-2)



BP120122

HOOD

ITEM	PART NO.	DESCRIPTION	QTY
1	362030	Handle	2
2	1477508	Bracket.....	1
3	292501	Capscrew.....	4
4	320156	Washer	4
5	292680	Lockwasher.....	4
6	136687	Nut	4
7	292528	Capscrew.....	4
8	1479870	Screw (Stop).....	4
9	136692	Nut	4
10	320157	Washer	2
11	292681	Lockwasher.....	4
12	1489092	Screw (Stop).....	2
13	216877	Nut	10
14	239503	Nut	4
15	376397	Nut	2
16	18498	Capscrew.....	2
17	1479871	Washer	2
18	292535	Capscrew.....	AR
19	300088	Seal (Door)	8
20	320162	Washer	8
21	292683	Lockwasher.....	10
22	1554208	Channel	1
23	1476910	Hood (RH)	1
24	1385584	Gas Spring.....	2
25	1476911	Hood (LH).....	1
26	1478959	Rod	2
27	1489401	Support.....	1
28	1477512	Bracket.....	1
29	1494868	Plug (Without Air Conditioner)	4
30	1494869	Plug (Without Air Conditioner)	3
31	1382332	Latch	2
32	1494480	Bracket.....	2
33	320155	Washer	4
34	296155	Capscrew.....	4
35	292679	Lockwasher.....	4
36	292668	Nut	4
37	320160	Washer	4
38	292682	Lockwasher.....	4
39	136692	Nut	4
40	a 1382766	Wrench (Hood Latch)	1
41	309666	Plug	2
42	1494642	Shim	AR
42	1494643	Shim	AR
42	1494645	Shim	AR
43	320158	Washer	AR
44	1587730	Sound Liner (LH) (EEC)	1
45	1587731	Sound Liner (RH) (EEC).....	1
46	1587727	Sound Liner (LH) (EEC)	1
47	1587726	Sound Liner (RH) (EEC).....	1
48	1587734	Sound Liner (LH) (EEC)	1
49	1587735	Sound Liner (RH) (EEC).....	1

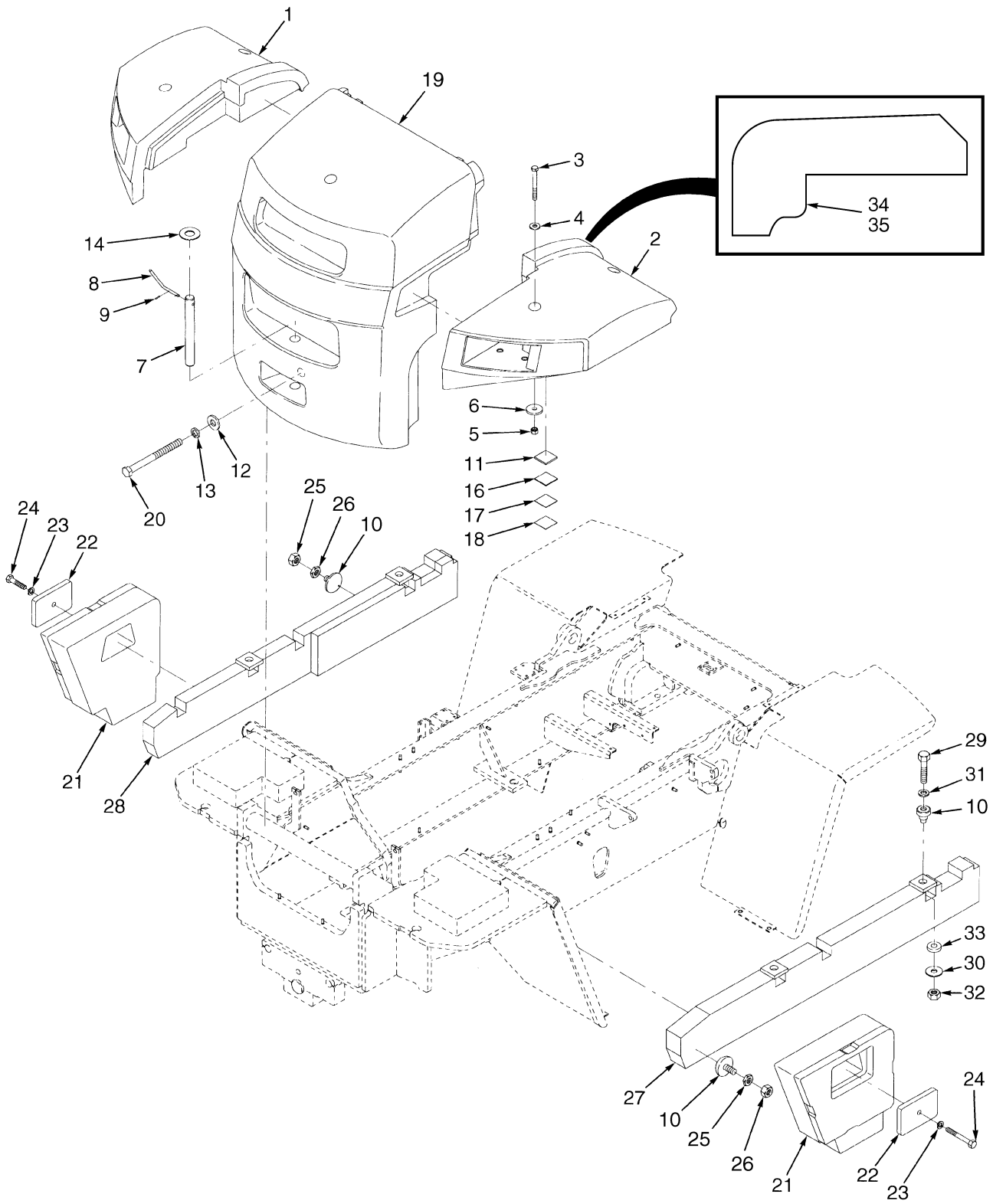
HOOD

ITEM	PART NO.	DESCRIPTION	QTY
50	1498373	Plate (EEC).....	28
51	136985	Capscrew (EEC).....	28
52	1593327	Spacer (EEC)	28

FOOTNOTES:

a Not Illustrated

COUNTERWEIGHT (Figure 1-3)

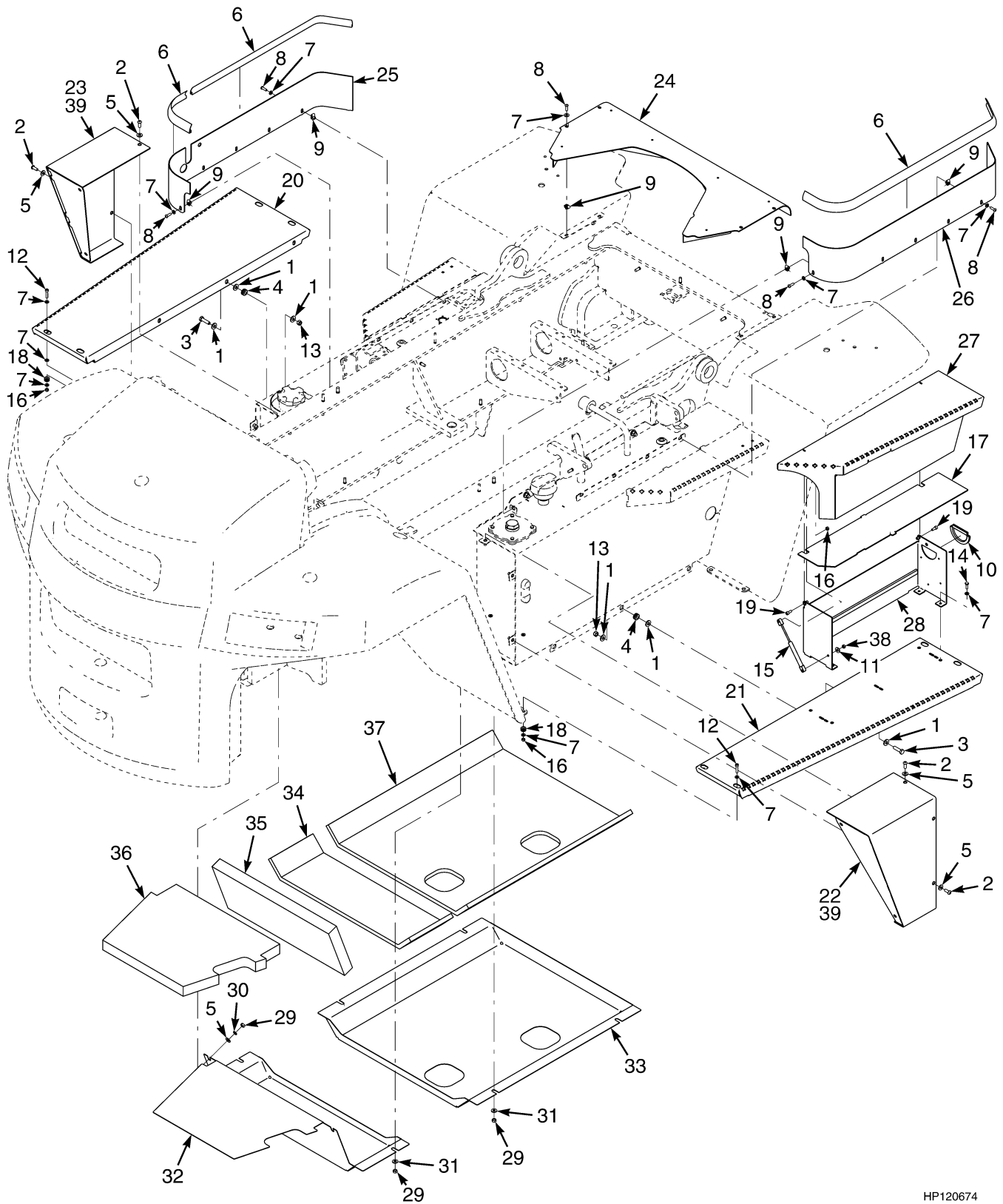


HP120578

COUNTERWEIGHT**KEY:****A: H13.00XM-14.00XM/H10.00-EC****B: H16.00XM/12.00-EC****C: H12.00-EC**

ITEM	PART NO.	DESCRIPTION	QTY		
			A	B	C
1	2038857	Fender (LH)	1	1	1
2	2038858	Fender (RH)	1	1	1
3	292597	Capscrew	4	4	4
4	1475872	Washer	4	4	4
5	316829	Nut	4	4	4
6	1301086	Washer	4	4	4
7	1467696	Tow Pin	1	1	1
8	1495368	Grip	1	1	1
9	302440	Pin	1	1	1
10	816231	Stop	4
11	1475214	Shim	AR	AR	AR
12	221786	Washer	1	1	1
13	15170	Lockwasher	1	1	1
14	15189	Washer	1	1	1
15	280472	Sealant	AR	AR	AR
16	1475211	Shim	AR	AR	AR
17	1475212	Shim	AR	AR	AR
18	1475213	Shim	AR	AR	AR
19	1467625	Counterweight	1
19	1467626	Counterweight	1	1
20	1453469	Capscrew	1
20	1453470	Capscrew	1	1
21	2045338	Counterweight (RH)	1	1	1
21	2045336	Counterweight (LH)	1	1	1
22	1485676	Plate	2	2	2
23	292689	Lockwasher	2	2	2
24	292612	Capscrew (127 mm)	2	2	2
25	216877	Nut	4
26	296130	Nut	4
27	816136	Counterweight (RH)	1
28	816137	Counterweight (LH)	1
29	293696	Capscrew	4
30	816138	Washer	4
31	1331575	Washer	4
32	316828	Nut	4
33	1373270	Isolator	4
34	1532632	Liner (LH)	1	1	1
35	1532633	Liner (RH)	1	1	1

FLOOR PLATES AND COVERS (Figure 1-4)



HP120674

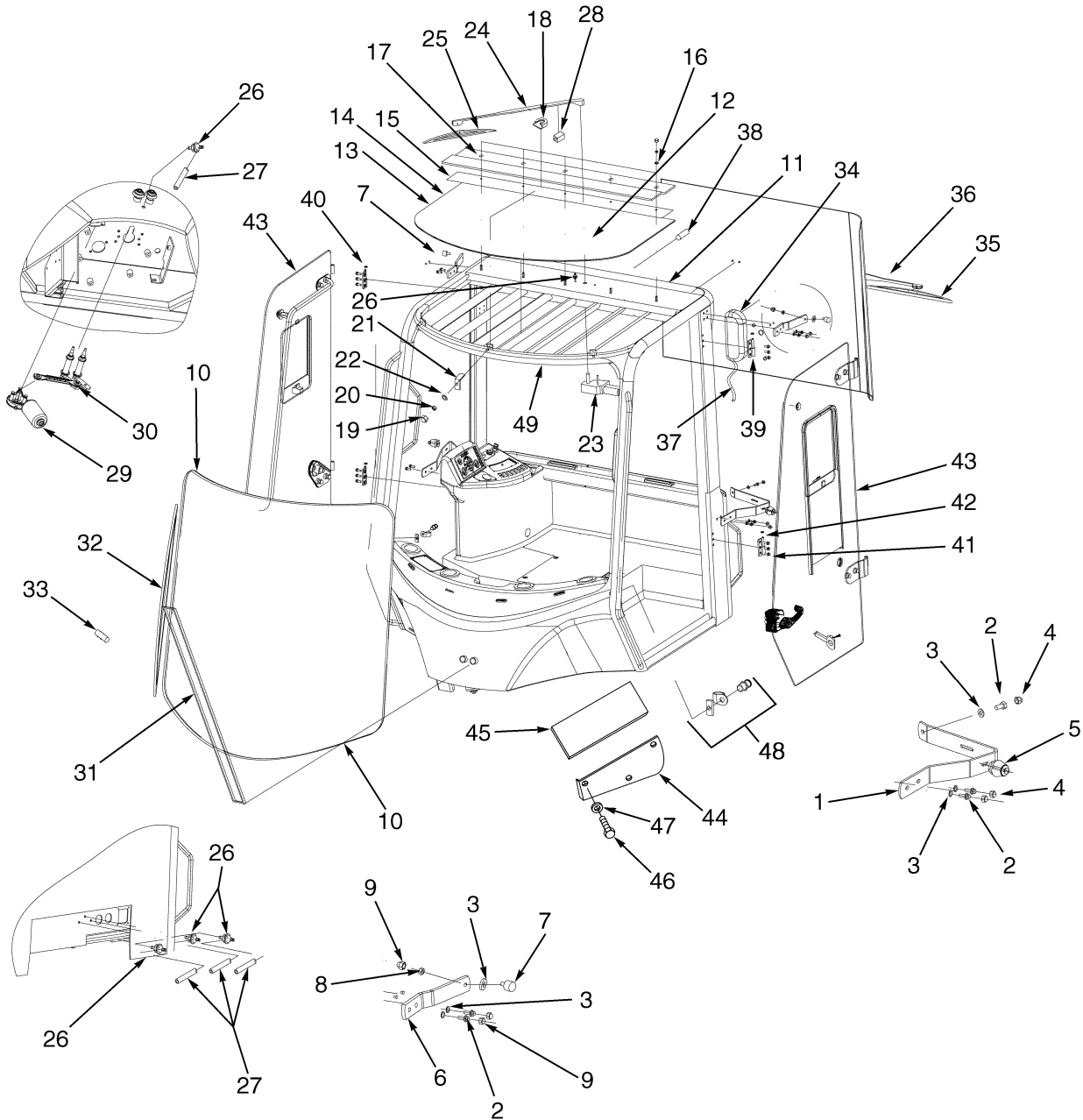
FLOOR PLATES AND COVERS

ITEM	PART NO.	DESCRIPTION	QTY
1	320162	Washer	18
2	296173	Capscrew.....	6
3	287837	Capscrew.....	6
4	216735	Grommet.....	6
5	320160	Washer	6
6	1491360	Seal	AR
7	320158	Washer	42
8	296167	Capscrew.....	14
9	1480237	Clip Nut.....	14
10	325983	Trim	AR
11	292681	Lockwasher.....	2
12	296012	Capscrew.....	8
13	302402	Nut	6
14	136749	Capscrew.....	4
15	1532341	Gas Spring.....	1
16	302400	Locknut	10
17	2071326	Cover	1
18	91946	Grommet.....	8
19	1529665	Capscrew.....	2
20	1529664	Running Board (LH).....	1
21	1529663	Running Board (RH)	1
22	1532449	Extension (LH)	1
23	1532447	Extension (RH)	1
24	1485265	Cover	1
25	1485263	Panel (LH).....	1
26	1485264	Panel (RH)	1
27	1529751	Cover (Battery Box)	1
28	1532202	Battery Box	1
29	a 136692	Nut	8
30	a 292682	Lockwasher.....	8
31	a 320160	Washer	8
32	a 1515432	Cover (Rear)	1
33	a 1562201	Cover (Bottom)	1
34	a 1562209	Liner.....	1
35	a 1562210	Liner.....	1
36	a 1562212	Liner.....	1
37	a 1562205	Liner.....	1
38	329069	Nut	2
39	288762	Tape.....	AR

FOOTNOTES:

a H13.00XM-6, H14.00XM-6, H16.00XM-6

CAB AND ATTACHING PARTS (Figure 1-5)



HP120624

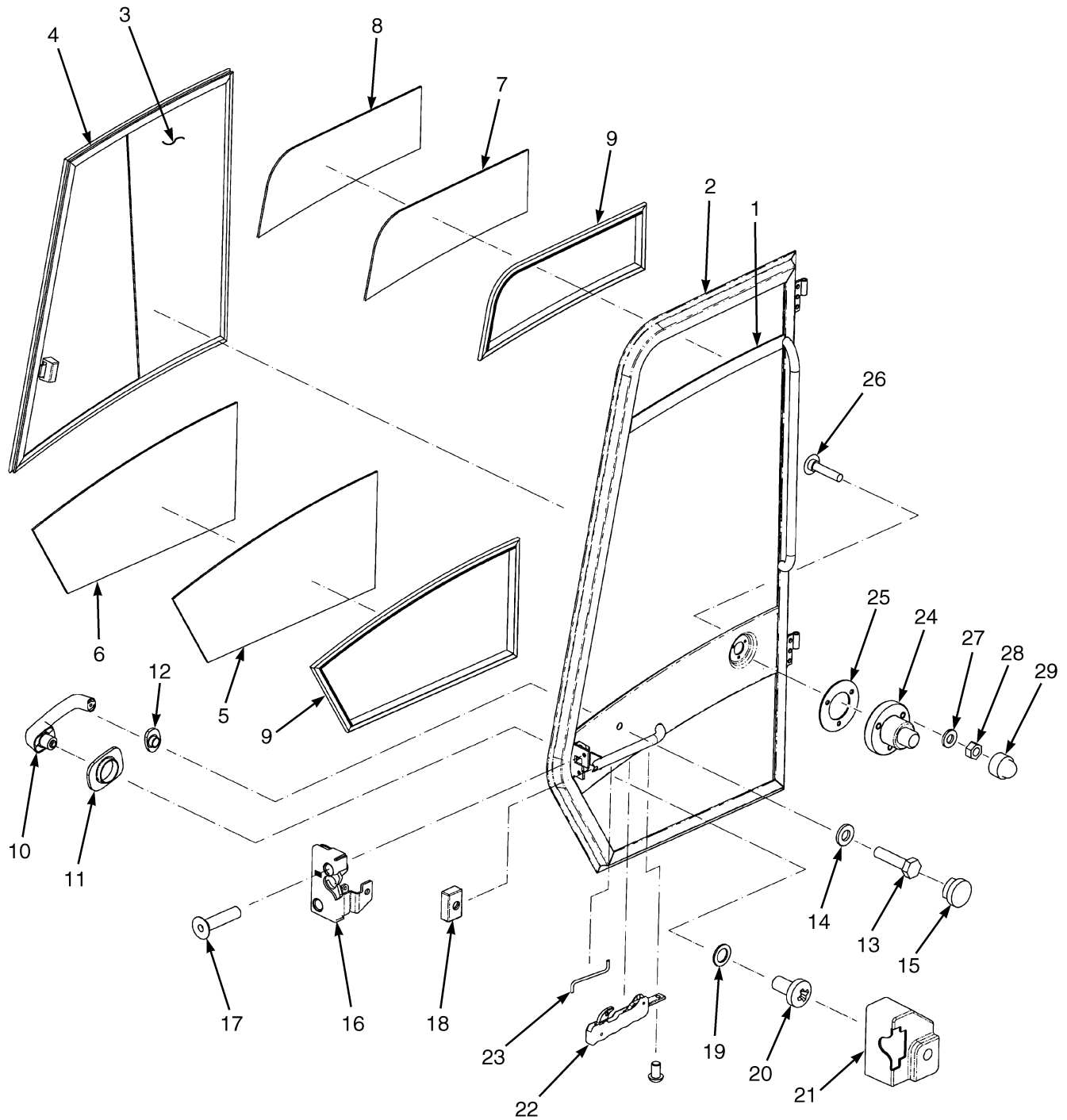
CAB AND ATTACHING PARTS

ITEM	PART NO.	DESCRIPTION	QTY
1	1558020	Bar (LH) (Hold-Open) (Lower)	1
1	1558021	Bar (RH) (Hold-Open) (Lower).....	1
2	1492239	Bolt	8
3	320158	Washer	10
4	1476584	Cap	6
5	1493313	Bumper	2
6	1558023	Bar (RH) (Hold-Open) (Upper)	1
6	1558022	Bar (LH) (Hold-Open) (Upper)	1
7	1493316	Bumper	2
8	316835	Nut	2
9	1476584	Cap	6
10	Window Assembly (Curved Window_	1
10	1493320	Windshield (Tempered)	1
10	1498750	Seal Kit.....	1
10	2046118	Windshield (Laminated).....	1
10	1498750	Seal Kit.....	1
10	2046119	Flat Glass Kit (Service Option)	1
10	1498750	Seal Kit.....	1
11	1493323	Window Assembly (Rear)	1
11	1493324	Window (Rear) (Curved)	1
11	1498750	Seal Kit.....	1
12	1558024	Window (Skylight) (Laminated).....	1
13	1515337	Seal	AR
13	1393463	Seal (Optional).....	AR
14	1498339	Sealant	AR
15	1498341	Seal	1
16	1498342	Washer	5
17	1493328	Clip	1
18	1493329	Cover	3
19	1493397	Cover	8
20	316834	Nut	8
21	1498343	Clip	3
22	320156	Washer	3
23	1493344	Wiper Motor	1
24	1498347	Wiper Arm.....	1
25	1498348	Wiper Blade	1
26	1493336	Connector	6
27	1493337	Hose	9
28	1507003	Nozzle (Top)	1
29	1493332	Wiper Motor	1
30	1493333	Linkage	1
31	1493334	Wiper Arm.....	1
32	1493335	Wiper Blade	1
33	1507005	Nozzle (Front).....	1
34	1493339	Wiper Motor	1
35	1493340	Wiper Blade	1
36	1493341	Wiper Arm.....	1
37	2043546	Wire Harness (Rear Wiper)	1
38	1498344	Washer (Nozzle)	1
39	1393473	Hinge (LH)	2
39	Pin (Hinge)	2

CAB AND ATTACHING PARTS

ITEM	PART NO.	DESCRIPTION	QTY
40	1393474	Hinge (RH).....	2
40	Pin (Hinge)	2
41	1493308	Bolt	12
42	1468312	Washer	4
43	1553405	Door Assembly (LH)	1
43	1553404	Door Assembly (RH).....	1
44	1493272	Air Filter Cover.....	1
44	1493274	Cover	1
45	1558028	Air Filter	1
46	293613	Capscrew	3
47	320156	Washer	3
48	1493318	Bolt Assembly (Striker)	2
48	1504953	Block.....	1
48	1504954	Guard (Striker Bolt)	1
48	1504955	Bolt (Striker)	1
49	1493307	Frame (Cab)	1

STEEL DOOR (Figure 1-6) RIGHT HAND



BP120062



Suggest:

For more complete manuals. Please go to the home page.

<https://www.ebooklibonline.com>

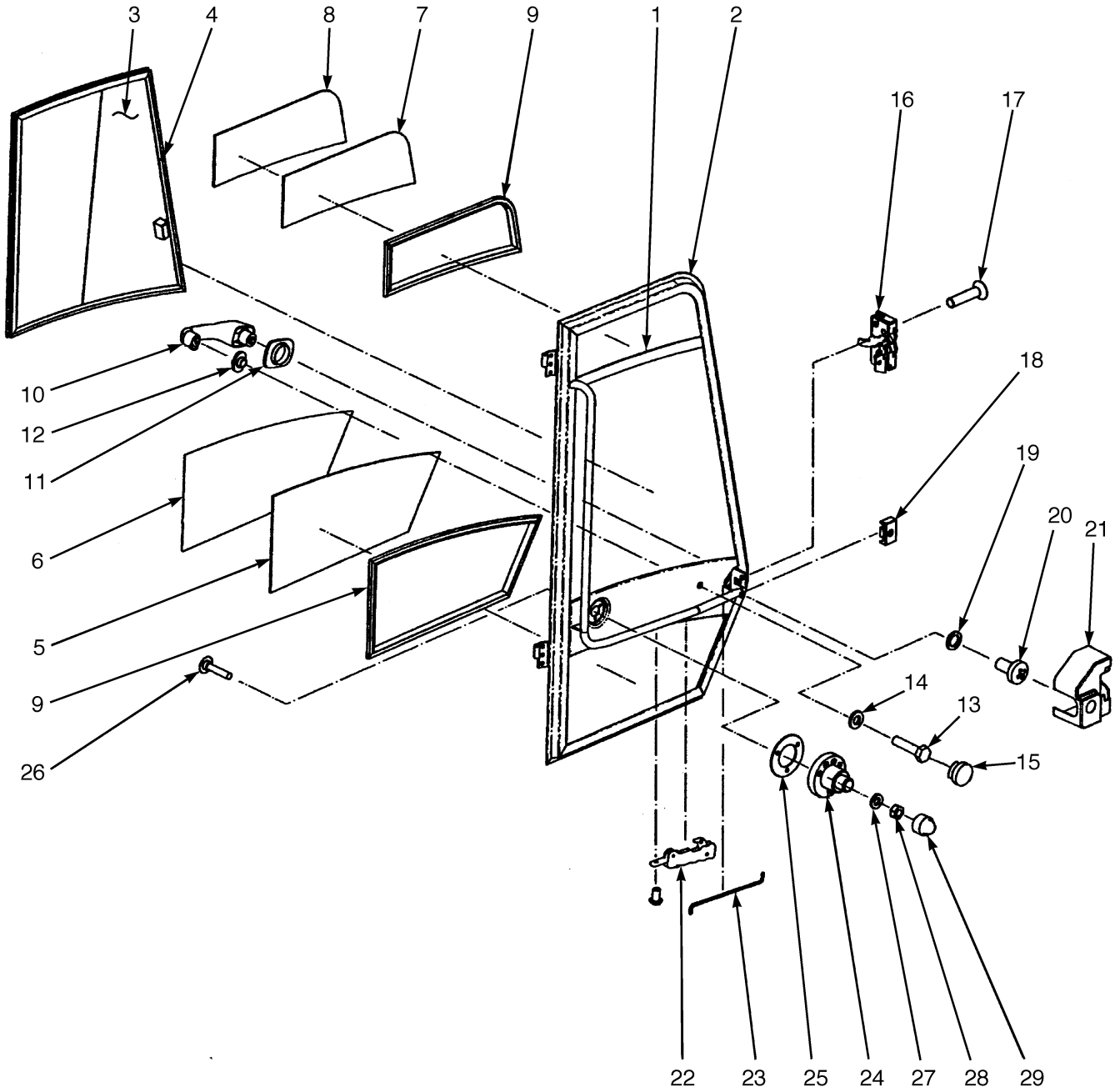
If the above button click is invalid. Please download this document first, and then click the above link to download the complete manual.

Thank you so much for reading

**STEEL DOOR
RIGHT HAND**

ITEM	PART NO.	DESCRIPTION	QTY
	1553404	Door Assembly (RH).....	1
1	1558292	Frame	1
2	1515337	Seal	5
3	1558293	Window (Main)	1
4	1558294	Seal	1
5	1558295	Window (Lower)	1
6	1558296	Frame (Window) (Lower).....	1
7	1558297	Window (Upper)	1
8	1558298	Frame (Window) (Upper).....	1
9	1558299	Seal	4
10	1495371	Handle (Push Button).....	1
11	1495372	Seal	1
12	1495431	Seal	1
13	287816	Capscrew	1
14	1468321	Washer	1
15	1558300	Cap.....	1
16	1558301	Latch Assembly	1
17	296229	Capscrew	2
18	1558302	Plate (Door Handle).....	1
19	1558303	Washer	1
20	1558304	Screw	1
21	1495435	Cover	1
22	1558305	Remote Control (Door Handle).....	1
23	1558306	Rod (Connector).....	1
24	1497241	Hold-Open	1
25	1495454	Seal	1
26	1558307	Screw	3
27	1506738	Washer	3
28	316834	Nut.....	3
29	1493397	Cover	3

STEEL DOOR (Figure 1-7) LEFT HAND



BP120063

<https://www.ebooklibonline.com>

Hello dear friend!

Thank you very much for reading.

Enter the link into your browser.

The full manual is available for immediate download.

<https://www.ebooklibonline.com>