

PARTS MANUAL

SPACESAVER

**S40-65XM
(D187)**

CUSTOMER EDITION

HYSTER

SECTIONS

1	FRAME
2	ENGINES
3	FUEL SYSTEM
4	ELECTRICAL SYSTEM
5	TRANSMISSION
6	STEERING SYSTEM
7	BRAKE SYSTEM
8	HYDRAULIC SYSTEM
9	MAST-TWO STAGE LIMITED FREE-LIFT
10	MAST-TWO STAGE FULL FREE-LIFT
11	MAST-THREE STAGE FULL FREE-LIFT
12	MAST-FOUR STAGE FULL FREE-LIFT
13	OPTIONS
14	NUMERICAL INDEX

TABLE OF CONTENTS

DESCRIPTION	PAGE
A	
ACCUMULATOR	13-62
AIR CLEANER	
GAS/LPG AND DUAL FUEL 2.0L/2.2L	3-66
AIR CLEANER AND CRANKCASE BREATHER	
GAS/LPG AND DUAL FUEL 3.0L	
LOW EMISSIONS	3-68
AIR FILTER	
GASOLINE AND DUAL FUEL 3.0L	
S/N D187V-20517⇒ INC. 20042, 20049, 20207, 20473, 20474-20482, 20484-20485, 20508-20510, 20514 EXC. 20530	3-58
GASOLINE AND LPG 3.0L	
⇒S/N D187V-20517 INC. 20530 EXC. 20042, 20049, 20207, 20472, 20473-20482, 20484-20485, 20508-20510, 20514	3-56
GASOLINE/LPG AND DUAL FUEL	3-64
LPG 2.0L AND 2.2L	
S/N D187V-20517⇒ INC. 20042, 20049, 20207, 20473, 20474-20482, 20484-20485, 20508-20510, 20514 EXC. 20530	3-60
LPG 3.0L	
S/N D187V-20517⇒ INC. 20042, 20049, 20207, 20473, 20474-20482, 20484-20485, 20508-20510, 20514 EXC. 20530	3-62
AIR FILTER AND BREATHER	
GAS AND LPG 3.0L	
EPA COMPLIANT.....	3-70
ALTERNATOR	
GASOLINE AND LPG	
2.0L AND 2.2L.....	4-146
3.0L	
⇒S/N D187V-23918Y.....	4-150
⇒S/N D187V-6779.....	4-148
TYPE GS AND LPS	
⇒S/N D187V-5027.....	4-156
S/N D187V-5028⇒.....	4-158
ALTERNATOR MOUNT	
GASOLINE AND LPG	
3.0L ENGINE.....	4-152
ALTERNATOR MOUNTING	
SERPENTINE BELT	
GM 3.0L.....	4-154
AUDIBLE ALARMS	13-64
AUXILIARY TUBE EXTENSION KIT	
FOUR STAGE FULL FREE-LIFT	13-30
TWO AND THREE STAGE FULL FREE-LIFT	13-26
TWO STAGE LIMITED FREE-LIFT.....	13-24
AUXILIARY TUBES	
FOUR STAGE FULL FREE-LIFT	
FOUR FUNCTION GROUP WITH INTERGRAL SIDE-SHIFT.....	13-34
TWO AND THREE STAGE FULL FREE-LIFT	
FOUR FUNCTION GROUP WITH INTERGRAL SIDE-SHIFT.....	13-32

<https://www.ebooklibonline.com>

Hello dear friend!

Thank you very much for reading.

Enter the link into your browser.

The full manual is available for immediate download.

<https://www.ebooklibonline.com>

TABLE OF CONTENTS (Continued)

DESCRIPTION	PAGE
B	
BRAKE	7-4
BRAKE LINES	
⇒S/N D187V-20723 INC. 20662, 20682, 20697, 20701, 20708, 20712, 20719	7-6
S/N D187V-20724⇒ EXC. 20662, 20682, 20697, 20701, 20708, 20712, 20719	7-8
BRAKE PEDAL LINKAGE	7-2
C	
CAMSHAFT AND OIL PAN	
GASOLINE AND LPG 3.0L	
1996 THRU 1998 SERIES	2-134
1999 SERIES ENGINE	2-138
2000 AND 2001 SERIES ENGINE	2-140
2002-2005 SERIES ENGINE	2-144
CAMSHAFT AND VALVES	
2.2L	2-40
GASOLINE AND LPG	
2.0L	2-28
CARBURETOR	
GASOLINE	
2.0L AND 2.2L	3-36
LPG 2.0L	
⇒D/B 08/1998	3-38
D/B 08/1998⇒S/N D187V-20516 INC. 20530 EXC. 20042, 20049, 20207, 20473, 20474-20482, 20484-20485, 20508-20510, 20514	3-40
LPG 3.0L	3-106
LPG 3.0L CLOSED LOOP	
S/N D187V-21583Y⇒	3-108
LPG 3.0L OPEN LOOP	
S/N D187V-20517⇒ INC. 20042, 20049, 20207, 20473, 20474-20482, 20484-20485, 20508-20510, 20514 EXC. 20530	3-110
LPG CLOSED LOOP	
2.0L AND 2.2L	
S/N D187V-21583Y⇒	3-44
LPG OPEN LOOP 2.0L AND 2.2L	
S/N D187V-20517⇒ INC. 20042, 20049, 20207, 20473, 20474-20482, 20484, 20508-20510, 20514 EXC. 20530	3-42
CARRIAGE	
FOUR STAGE FULL FREE-LIFT	
MAST GROUP NO. C515-6058, LIFT HEIGHT TO BOTTOM OF FORK 238.5 IN.	12-20
THREE STAGE FULL FREE-LIFT	
SIX ROLLER	11-32
TWO STAGE FULL FREE-LIFT	
SIX ROLLER	10-22
TWO STAGE LIMITED FREE-LIFT	
SIX ROLLER	9-18
CONTROL VALVE	
FOUR FUNCTION	8-34
T066	
⇒S/N T066M-06990	5-26
T066 AND T082	
S/N T066M⇔S/N T082M-07725	5-30

TABLE OF CONTENTS (Continued)

DESCRIPTION	PAGE
C (continued)	
T082 AND T111	
S/N T082M-07726⇒	5-34
THREE FUNCTION	8-26
COOLING	
GASOLINE	
2.2L	2-56
GASOLINE AND LPG	
2.0L	2-52
GASOLINE AND LPG 3.0L	
1996 THRU 1998 SERIES	2-124
1999 THRU 2003 SERIES	2-128
2003 THRU 2005 SERIES WITH SERPENTINE BELT	2-132
LPG 2.2L	2-58
COUNTERWEIGHT	1-8
CRANKSHAFT AND PISTON	
GASOLINE AND LPG	
2.0L	2-26
GASOLINE AND LPG 3.0L	
1996 THRU 1998 SERIES ENGINE	2-96
1999 SERIES ENGINE	2-100
2000 AND 2001 SERIES ENGINE	2-102
CRANKSHAFT AND PISTONS	
2.2L	2-38
GASOLINE AND LPG 3.0L	
2002-2005 SERIES ENGINE	2-104
CYLINDER	
TWO STAGE LIMITED FREE-LIFT	
S40-55XM	9-10
S60-65XM	
D/B 07/2001⇒	9-15
⇒D/B 07/2001	9-12
CYLINDER BLOCK	
2.2L	2-34
GASOLINE AND LPG	
2.0L	2-22
CYLINDER HEAD	
2.2L	2-36
GASOLINE AND LPG	
2.0L	2-24
GASOLINE AND LPG 3.0L	
1996 THRU 1998 SERIES ENGINE	2-108
1999 SERIES ENGINE	2-112
2000 THRU 2005 SERIES ENGINE	2-114
D	
DIFFERENTIAL	
T066 AND T082	
⇒S/N T082M-07725	5-38
T082 AND T111	

TABLE OF CONTENTS (Continued)

DESCRIPTION	PAGE
D (continued)	
S/N T082M-07726⇒	5-42
DISTRIBUTOR	
GASOLINE AND LPG	
2.0L	4-140
2.2L	4-142
3.0L	4-144
DRIVE AND REAR LIGHT	13-48
DRIVE AXLE	5-48
E	
ELECTRICAL	
GASOLINE AND LPG	
2.0L AND 2.2L.....	2-70
GASOLINE AND LPG 3.0L	
1996 THRU 1998 SERIES ENGINE	2-118
1999 SERIES ENGINE	2-120
2000 THRU 2005 SERIES ENGINE	2-122
ELECTRICAL SYSTEM	
COWL	
⇒S/N D187V-20723 EXC. 20662, 20682, 20701, 20705, 20712, 20714, 20719	4-16
S/N D187V-20724⇒ INC. 20682, 20697, 20701, 20705, 20712, 20714, 20719	4-20
GASOLINE AND LPG	
3.0L	
⇒S/N D187V-12900	4-70
GASOLINE AND LPG 2.0L AND 2.2L	
⇒S/N D187V-20516 INC. 20530 EXC. 20042, 20049, 20207, 20473, 20474-20482, 20484-20485, 20508-20510, 20514	4-4
S/N D187V-20517⇒ INC. 20042, 20049, 20207, 20473, 20474-20482, 20484-20485, 20508-20510, 20514 EXC. 20530	4-10
GASOLINE AND LPG 3.0L	
EPA COMPLIANT.....	4-80
NON-EPA COMPLIANT	
S/N D187V-12901⇒ EXC. 20662, 20682, 20697, 20701, 20705, 20712, 20714, 20719.....	4-74
LPG 3.0L	
S/N D187V-22009Y⇒	4-84
LPG 3.0L CLOSED LOOP	
S/N D187V-21583Y⇒	4-88
TYPE GS AND LPS 2.0L AND 2.2L	
⇒S/N D187V-20516 INC. 20530 EXC. 20042, 20049, 20207, 20473, 20474-20482, 20484-20485, 20508-20510, 20514	4-8
TYPES GS AND LPS, (3.0L)	
EPA COMPLIANT.....	4-92
(NON-EPA COMPLIANT).....	4-90
EMISSION CONTROL SYSTEM	
LPG 2.0L AND 2.2L	
EPA COMPLIANT.....	2-68
EMISSION CONTROLS	
GASOLINE AND LPG	
2.0L	2-64

TABLE OF CONTENTS (Continued)

DESCRIPTION	PAGE
E (continued)	
EMISSION CONTROLS GASOLINE	
2.2L	2-66
ENGINE ASSEMBLY	
GASOLINE	
3.0L EPA COMPLIANT	2-88
LPG	
3.0L EPA COMPLIANT	2-92
ENGINE FUEL SYSTEM	
3.0L EPA COMPLIANT	
GASOLINE	3-102
LPG	3-104
LOW EMISSIONS	
GASOLINE 3.0L	3-100
LPG 2.0L AND 2.2L	
EPA COMPLIANT	2-76
ENGINE MOUNT	
GASOLINE AND LPG	
2.0L	2-4
2.2L	2-6
3.0L	2-8
EXHAUST	
3.0L LPG	
WITH LOW EMISSIONS	2-18
GASOLINE AND LPG	
⇒S/N D187V24786Z (GM 3.0L)	2-10
LPG WITH LOW EMISSIONS	
2.0L AND 2.2L	2-12
EXHAUST GAS AND LPG	
3.0L GM	
EPA COMPLIANT	2-20
S/N D187V024787Z⇒	2-16
EXHAUST LPG	
2.0L AND 2.2L MAZDA	
EPA COMPLIANT	2-14
F	
FENDERS	13-4
FILTER AND LOCK-OFF VALVE	
LPG	3-120
FIRE EXTINGUISHER	13-60
FLOW VALVE	8-14
FLYWHEEL AND TORQUE CONVERTER	
2.2L	2-80
GASOLINE AND LPG	
2.0L	2-78
3.0L	
⇒S/N D187V-5844	2-82
S/N D187V-5845⇒S/N D187V-8770 INC. 8787 EXC. 8744, 8747, 8748-8749, 8766	2-84
S/N D187V-8771⇒ INC. 8744, 8747, 8748-8749, 8766 EXC. 8787	2-86

TABLE OF CONTENTS (Continued)

DESCRIPTION	PAGE
F (continued)	
FORKS	1-26
MAST GROUP NO. C515-6058	
LIFT HEIGHT TO BOTTOM OF FORK 238.5 IN.	1-28
FRAME AND FLOORPLATES.....	1-2
FREE LIFT	
THREE STAGE FULL FREE-LIFT	
S40-55XM	11-16
S60-65XM	11-12
FREE-LIFT	
FOUR STAGE FULL FREE-LIFT	
MAST GROUP NO. C515-6058, LIFT HEIGHT TO BOTTOM OF FORK 238.5 IN.	12-12
TWO STAGE FULL FREE-LIFT	10-8
FREE-LIFT CYLINDER	
FOUR STAGE FULL FREE-LIFT	
MAST GROUP NO. C515-6058, LIFT HEIGHT TO BOTTOM OF FORK 238.5 IN.	12-18
THREE STAGE FULL FREE-LIFT	
D/B 09/2003⇒.....	11-28
⇒D/B 09/2003.....	11-24
TWO STAGE FULL FREE-LIFT	
D/B 09/2003⇒.....	10-20
⇒D/B 09/2003.....	10-16
FUEL	
GASOLINE AND LPG	
2.0L	
⇒S/N D187V-20516 EXC. 20042, 20049.....	2-72
LPG 2.0L AND 2.2L	
S/N D187V-20517⇒ INC. 20042, 20049, 20207, 20473, 20474-20482, 20484-20485, 20508-20510, 20514 EXC. 20530	2-74
FUEL FILTERING AND LOCK-OFF SYSTEM	
3.0L LPG	
EPA COMPLIANT.....	3-122
FUEL REGULATION SYSTEM	
2.0L AND 2.2L LPG	
EPA COMPLIANT.....	3-18
FUEL SYSTEM	
DUAL FUEL 2.0L	
D/B 08/1998⇒.....	3-26
⇒D/B 08/1998.....	3-22
DUAL FUEL 3.0L	3-80
GAS AND DUAL FUEL	
3.0L	
S/N D187V-28576A⇒.....	3-76
GASOLINE AND DUAL FUEL	
3.0L	
⇒S/N D187V-28575A.....	3-72
LPG 2.0L	
⇒S/N D187V-20517 INC. 20530 EXC. 20042, 20049, 20207, 20472, 20473-20482, 20484-20485, 20508-20510, 20514	3-8
LPG 3.0L	
⇒S/N D187V-8342.....	3-84

TABLE OF CONTENTS (Continued)

DESCRIPTION	PAGE
F (continued)	
S/N D187V-8343⇔S/N D187V-22008	3-88
LPG 3.0L CLOSED LOOP	
S/N D187V-21583Y⇒	3-96
LPG 3.0L OPEN LOOP	
S/N D187V-20517⇒ INC. 20042, 20049, 20207, 20473, 20474-20482, 20484-20485, 20508-20510, 20514 EXC. 20530	3-92
LPG CLOSED LOOP	
2.0L AND 2.2L	
S/N D187V-21583Y⇒	3-14
LPG OPEN LOOP 2.0L AND 2.2L	
S/N D187V-20517⇒ INC. 20042, 20049, 20207, 20473, 20474-20482, 20484-20485, 20508-20510, 20514 EXC. 20530	3-12
FUEL TANK	
GASOLINE AND DUAL FUEL	
2.0L	3-30
G	
GOVERNOR	
GASOLINE AND LPG	
2.0L	3-32
LPG 2.0L AND 2.2L	
S/N D187V-20517⇒ INC. 20042, 20049, 20207, 20473, 20474-20482, 20484-20485, 20508-20510, 20514 EXC. 20530	3-34
LPG 3.0L	
⇒S/N D187V-8342.....	3-112
H	
HEADER HOSE	
FOUR STAGE FULL FREE-LIFT	
MAST GROUP NO. C515-6058, LIFT HEIGHT TO BOTTOM OF FORK 238.5 IN.	
⇒S/N D187V-22687	12-22
S/N D187V-22688⇒	12-26
THREE STAGE FULL FREE-LIFT	11-34
TWO STAGE FULL FREE-LIFT	10-24
TWO STAGE LIMITED FREE-LIFT	9-20
HOOD.....	1-4
HYDRAULIC PUMP	
SINGLE GEAR	
⇒S/N D187V-11373 EXC. 11328-11334, 11363	8-6
⇒S/N D187V-16539 For 3.0L, S/N D187V-11374⇔S/N D187V-17120 INC. 11328-11334, 11363 For 2.0L	8-8
S/N D187V16540⇔S/N D187V32071B INC. 16535 For 3.0L (FOR 3.0L), S/N D187V17121⇔S/N D187V32071B INC. 17035, 17037-17039 (For 2.0L)	8-10
S/N D187V32072B⇒	8-12
HYDRAULIC SYSTEM	8-2

TABLE OF CONTENTS (Continued)

DESCRIPTION	PAGE
I	
IDLE-UP MODULE	3-138
INNER MAST	
FOUR STAGE FULL FREE-LIFT	
MAST GROUP NO. C515-6058, LIFT HEIGHT TO BOTTOM OF FORK 238.5 IN.....	12-8
THREE STAGE FULL FREE-LIFT	11-6
TWO STAGE FULL FREE-LIFT	10-4
TWO STAGE LIMITED FREE-LIFT	9-4
INPUT AND COUNTER CLUTCH	
T082	
S/N D187V23103Y⇒ D/B 09/2003 INC. 22976, 23040-23043, 23066-23068, 23073-23074, 23076-23077, 23084, 23094-23096	5-22
S/N T082M-07726⇔S/N T082M-23848.....	5-18
S/N T082M-23849⇔S/N D187V-23102Y EXC. 23111, 23114, 23115, 23121, 23122-23123, 23125, 23131.....	5-20
T111	
D/B 09/2003⇒.....	5-24
INSTRUMENT CLUSTER	
⇒S/N D187V-28575A.....	4-168
S/N D187V-28576A⇒.....	4-170
INSTRUMENT PANEL AND DASH	4-166
INTEGRAL SIDE-SHIFT	
HYDRAULIC HOSES	
THREE AND FOUR STAGE FULL FREE-LIFT	13-22
TWO STAGE FULL FREE-LIFT	13-21
TWO STAGE LIMITED FREE-LIFT	13-20
INTEGRAL SIDE-SHIFT CARRIAGE	
THREE AND FOUR STAGE FULL FREE-LIFT	13-16
TWO STAGE FULL FREE-LIFT	13-14
TWO STAGE LIMITED FREE-LIFT	13-12
INTEGRAL SIDE-SHIFT CYLINDER	13-18
INTERMEDIATE 2 MAST	
FOUR STAGE FULL FREE-LIFT	
MAST GROUP NO. C515-6058, LIFT HEIGHT TO BOTTOM OF FORK 238.5 IN.....	12-4
INTERMEDIATE 3 MAST	
FOUR STAGE FULL FREE-LIFT	
MAST GROUP NO. C515-6058, LIFT HEIGHT TO BOTTOM OF FORK 238.5 IN.....	12-6
INTERMEDIATE MAST	
THREE STAGE FULL FREE-LIFT	11-4
L	
LABELS	1-21
LIFT	
TWO STAGE LIMITED FREE-LIFT	9-6
LIFT EYE	13-2
LIGHTS	
⇒S/N D187V31407B	13-50
S/N D187V31408B⇒.....	13-52
LIGHTS, LED BACK-UP AND BRAKE	13-54
LOAD BACKREST EXTENSION.....	1-24
LPG CONVERTER	

TABLE OF CONTENTS (Continued)

DESCRIPTION	PAGE
L (continued)	
⇒S/N D187V-9656 EXC. 9540-9546, 9566-9568, 9570-9575, 9603-9608, 9635, 9638-9639, 9641-9644, 9649-9651, 9655.....	3-124
S/N D187V-9657⇒ INC. 9540-9546, 9566-9568, 9570-9575, 9603-9608, 9635, 9638-9639, 9641-9644, 9649-9651, 9655.....	3-126
LPG REGULATOR	
3.0L EPA COMPLIANT	
LPG	3-128
LPG TANK	
⇒S/N D187V-20517 INC. 20530 EXC. 20042, 20049, 20207, 20472, 20473-20482, 20485, 20508-20510, 20514.....	3-4
LPG TANK AND MOUNTING	
S/N D187V-20517⇒ INC. 20042, 20049, 20207, 20473, 20474-20482, 20484-20485, 20508-20510, 20514 EXC. 20530.....	3-6
M	
MAIN CYLINDER	
FOUR STAGE FULL FREE-LIFT (LH)	
MAST GROUP NO. C515-6058, LIFT HEIGHT TO BOTTOM OF FORK 238.5 IN.....	12-14
FOUR STAGE FULL FREE-LIFT (RH)	
MAST GROUP NO. C515-6058, LIFT HEIGHT TO BOTTOM OF FORK 238.5 IN.....	12-16
LEFT HAND	
TWO STAGE FULL FREE-LIFT	10-12
RIGHT HAND	
TWO STAGE FULL FREE-LIFT	10-14
THREE STAGE FULL FREE-LIFT	11-20
MAIN ENGINE WIRING	
GASOLINE AND LPG	
GM 3.0L.....	4-134
MAIN LIFT	
FOUR STAGE FULL FREE-LIFT	
MAST GROUP NO. C515-6058, LIFT HEIGHT TO BOTTOM OF FORK 238.5 IN.....	12-10
THREE STAGE FULL FREE-LIFT	11-8
TWO STAGE FULL FREE-LIFT	10-6
MANIFOLD	
2.2L.....	2-48
GASOLINE AND LPG	
2.0L	2-46
MANIFOLD VALVE	
T082 AND T111	
S/N D187V-23103Y⇒ INC. 23040-23043, 23066-23068, 23073-23074, 23076-23077, 23084, 23094-23095 EXC. 23111-23115, 23121-23123, 23125, 23131, 23139.....	5-37
MANIFOLDS	
LPG 2.0L AND 2.2L	
EPA COMPLIANT.....	2-50
MAST INSTALLATION.....	8-16
FOUR STAGE FULL FREE-LIFT	8-18
MASTER CYLINDER	7-12
MIRROR.....	13-58
MONOTROL PEDAL	3-136

TABLE OF CONTENTS (Continued)

DESCRIPTION	PAGE
O	
OIL PUMP AND FILTER	
2.2L.....	2-44
GASOLINE AND LPG	
2.0L.....	2-32
OUTER MAST	
FOUR STAGE FULL FREE-LIFT	
MAST GROUP NO. C515-6058, LIFT HEIGHT TO BOTTOM OF FORK 238.5 IN.....	12-2
THREE STAGE FULL FREE-LIFT.....	11-2
TWO STAGE FULL FREE-LIFT.....	10-2
TWO STAGE LIMITED FREE-LIFT.....	9-2
P	
PARK BRAKE.....	7-10
PEDAL LINKAGE.....	3-134
POWERTRAIN PROTECTION SYSTEM	
⇒S/N D187V-29845A.....	13-40
S/N D187V-29846A⇒.....	13-42
PUMP DRIVE	
T066 AND T082	
⇒S/N T082M-07725.....	5-44
T082 AND T111	
S/N T082M-07726⇒.....	5-46
R	
RADIATOR AND HOSES	
GASOLINE AND LPG.....	2-60
REGULATOR	
CLOSED LOOP	
S/N D187V-21583Y⇒.....	3-48
OPEN LOOP	
S/N D187V-20517⇒ INC. 20042, 20049, 20207, 20473, 20474-20482, 20484-20485, 20508-20510, 20514 EXC. 20530.....	3-46
S	
SEAT.....	1-10
FULL SUSPENSION	
SHEET 1 OF 2	
D/B 03/2000⇒.....	1-14
SHEET 2 OF 2	
D/B 03/2000⇒.....	1-18
SHIFT LEVER.....	6-4
SIDE-SHIFT CARRIAGE.....	13-6
SIDE-SHIFT CYLINDER.....	13-9
SOLENOID	
DUAL FUEL 2.0L.....	3-50
STARTER	
GASOLINE AND LPG	
2.0L	
S/N D187V-15076⇒ EXC. 15704-15708, 17487-17490, 17519-17521.....	4-162
⇒S/N D187V-15076 INC. 15704-15708, 17487-17490, 17519-17521.....	4-160

TABLE OF CONTENTS (Continued)

DESCRIPTION	PAGE
S (continued)	
3.0L	
⇒S/N D187V-4259	4-164
STEERING AXLE	
⇒S/N D187V-17734X EXC. 17715	6-6
S/N D187V-17735X⇒ INC. 17715.....	6-10
STEERING CONTROL UNIT	
⇒S/N D187V-8599 INC. 8607-8609 EXC. 8528-8530, 8547, 8550-8551, 8554-8555, 8561, 8565, 8570, 8589, 8596	6-12
S/N D187V-8600⇒ INC. 8528-8530, 8547, 8550-8551, 8554-8555, 8561, 8565, 8570, 8589, 8596 EXC. 8607-8609.....	6-14
STEERING CYLINDER	6-16
STEERING POD	6-2
STROBE LIGHT	
D/B 01/2000⇒	13-46
⇒D/B 12/1999	13-44
T	
THROTTLE BODY AND LPG MIXER	
3.0L EPA COMPLIANT	
LPG	3-116
THROTTLE BODY INJECTION	
3.0L EPA COMPLIANT	
GASOLINE	3-118
GASOLINE 3.0L.....	3-114
THROTTLE LINKAGE	
GASOLINE AND LPG	
3.0L	
⇒S/N D187V-22008Y	3-130
S/N D187V-22009Y⇒.....	3-132
GASOLINE AND LPG 2.0L	
⇒S/N D187V-20517 INC. 20530 EXC. 20042, 20049, 20207, 20472, 20473-20482, 20484-20485, 20508-20510, 20514	3-52
GASOLINE AND LPG 2.0L AND 2.2L	
S/N D187V-20517⇒ INC. 20042, 20049, 20207, 20473, 20474-20482, 20484-20485, 20508-20510, 20514 EXC. 20530	3-54
TILT CYLINDER AND ATTACHING PARTS	8-20
TIMING GEAR COVER AND OIL PAN	
2.2L	2-42
GASOLINE AND LPG	
2.0L	2-30
TIRE AND WHEEL	
DRIVE WHEEL	13-36
STEER WHEEL	13-38
TRANSMISSION	
SHEET 1 OF 2	
T066 AND T082	
⇒S/N T082M-07725.....	5-2
T082	
S/N T082M07726⇒ D/B 09/2003.....	5-8

TABLE OF CONTENTS (Continued)

DESCRIPTION	PAGE
T (continued)	
T111	
D/B 09/2003⇒	5-14
SHEET 2 OF 2	
T066 AND T082 (INPUT AND COUNTER CLUTCH)	
⇒S/N T082M-07725	5-6
T082	
S/N T082M07726⇒ D/B 09/2003	5-12
T111	
D/B 09/2003⇒	5-17
TRANSMISSION COOLING	5-50
V	
VALVE ATTACHING PARTS	
FOUR FUNCTION	8-30
THREE FUNCTION	8-22
W	
WIRE HARNESS	
3.0L LPG	
CLOSED LOOP	4-130
CHASSIS	
⇒S/N D187V-19469 INC. 19967	4-42
S/N D187V-19470⇔S/N D187V-20516	4-44
S/N D187V20517⇒ D/B 05/2004	4-46
CHASSIS (GASOLINE AND LPG)	
MAZDA AND GM EPA COMPLIANT	4-48
CLUSTER	
D/B 07/2003⇒	4-36
⇒D/B 07/2003	4-33
COWL	
⇒S/N D187V-21582Y	4-24
S/N D187V-21583Y⇔S/N D187V-23102Y	4-26
S/N D187V23103Y⇔S/N D187V29745A EXC. 23113-23115, 23121-23123, 23125, 23131	4-28
S/N D187V29746A⇒	4-30
DUAL FUEL	
D/B 08/1998⇒	4-66
⇒D/B 08/1998	4-64
ENGINE	
GASOLINE 3.0L	
⇒S/N D187V-15584 INC. 15586-15589	4-94
S/N D187V-15585⇒ EXC. 15586-15589	4-98
GASOLINE AND LPG	
⇒D/B 08/1998	4-50
D/B 8/1998⇔S/N D187V-16452 INC. 16490-16493 EXC. 16299	4-52
S/N D187V16453⇔S/N D187V24400Z INC. 16299 EXC. 16490-16493	4-54
LPG 2.0L AND 2.2L CLOSED LOOP	
⇒S/N D187V-21582Y	4-60
LPG 3.0L	
⇒S/N D187V-8342	4-102

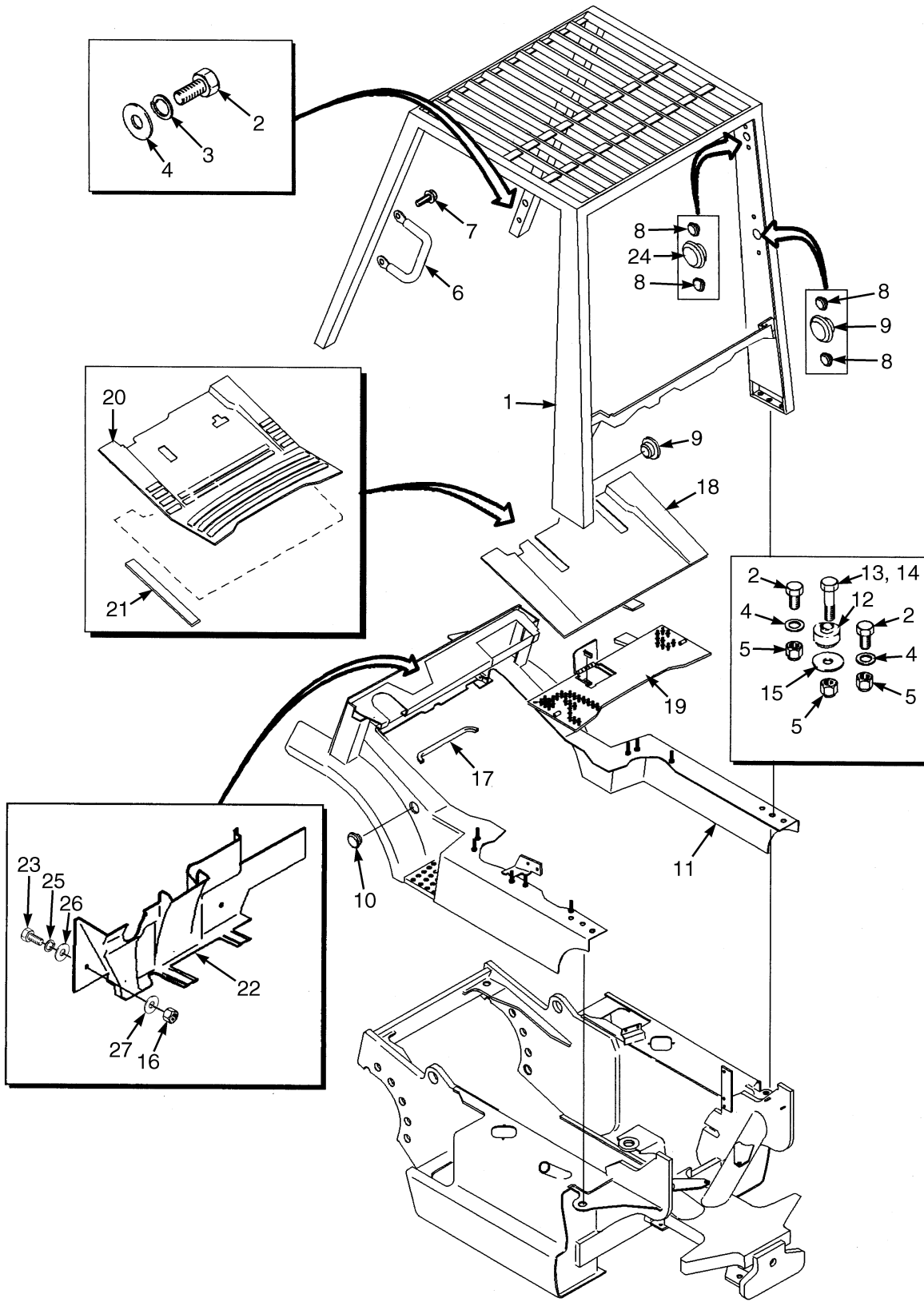
TABLE OF CONTENTS (Continued)

DESCRIPTION	PAGE
W (continued)	
LPG 3.0L WITH MSTs	
S/N D187V-12901⇔S/N D187V-22008Y	4-108
S/N D187V-22009⇔S/N D187V-25716Z	4-110
S/N D187V-25717Z⇒	4-114
S/N D187V-8343⇔S/N D187V-12900	4-104
LPG 3.0L WITHOUT MSTs	
S/N D187V-22009⇔S/N D187V-25716Z	4-124
S/N D187V-25717Z⇒	4-128
S/N D187V-8343⇔S/N D187V-16505 EXC. 16494-16498, 16500-16501, 16503-16504	4-118
ENGINE LPG 3.0L WITHOUT MSTs	
S/N D187V-16506⇔S/N D187V-22008Y INC. 16494-16498, 16500-16501, 16503-16504, 16507	4-120
FORWARD AND REVERSE	
⇒S/N D187V29745A	4-38
FORWARD AND REVERSE LEVER	
S/N D187V29746A⇒	4-40
LPG	
S/N D187V-20517⇒ INC. 20042, 20049, 20207, 20473, 20474-20482, 20484-20485, 20508-20510, 20514	4-68
NEUTRAL START	4-63
PRESSURE SWITCH	
LED BRAKE LIGHTS	13-56
SEALED ALTERNATOR	4-132
WIRE HARNESS (ENGINE)	
GASOLINE AND LPG	
S/N D187V24401Z⇒	4-56
WIRE HARNESS (MAIN)	
GASOLINE AND LPG 3.0L	
SHEET 1 OF 2	4-136
SHEET 2 OF 2	4-138

SECTION 1
FRAME

DESCRIPTION	PAGE
COUNTERWEIGHT	1-8
FORKS	1-26
MAST GROUP NO. C515-6058	
LIFT HEIGHT TO BOTTOM OF FORK 238.5 IN.	1-28
FRAME AND FLOORPLATES.....	1-2
HOOD.....	1-4
LABELS.....	1-21
LOAD BACKREST EXTENSION.....	1-24
SEAT.....	1-10
FULL SUSPENSION	
SHEET 1 OF 2	
D/B 03/2000⇒	1-14
SHEET 2 OF 2	
D/B 03/2000⇒	1-18

FRAME AND FLOORPLATES (Figure 1-1)



HP120492

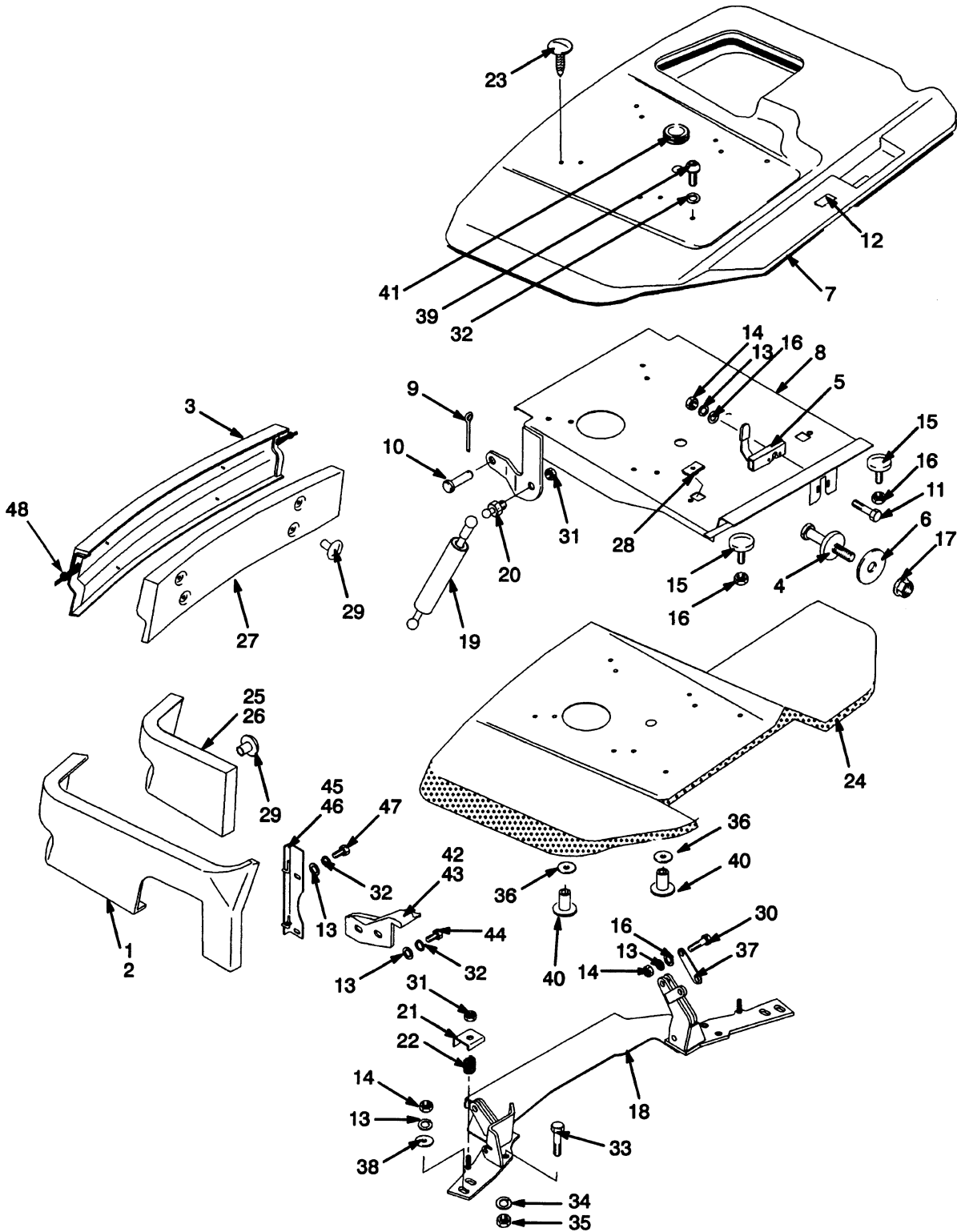
FRAME AND FLOORPLATES

ITEM	PART NO.	DESCRIPTION	QTY
1	1351324	Overhead Guard	1
1	1475598	Overhead Guard (Raised)	1
2	292528	Capscrew	6
3	292683	Lockwasher	4
4	296423	Washer	6
5	302402	Nut	4
6	1343647	Handle	1
7	329067	Screw	2
8	1363916	Plug	12
9	1363917	Plug	6
10	c 1350231	Plug	2
11	a 1351277	Operator Module	1
11	b 1479865	Operator Module	1
12	1378559	Mount	4
13	292535	Capscrew (Front)	2
14	292537	Capscrew (Rear)	2
15	361973	Spacer	4
16	136687	Nut	2
17	1378514	Trim	1
18	1375862	Floorplate (Front)	1
19	1375869	Floorplate (Rear)	1
20	1375863	Floormat	1
21	1375892	Pad (Rubber)	1
22	1375708	Cover	1
23	287816	Capscrew	2
24	260045	Grommet	2
25	292680	Lockwasher	2
26	320156	Washer	2
27	320158	Washer	2

FOOTNOTES:

- a** ⇒ S/N D187V-20516 INC. 20530 EXC. 20042, 20049, 20207, 20473, 20474-20482, 20484-20485, 20508-20510, 20514
- b** S/N D187V-20517 ⇒ INC. 20042, 20049, 20207, 20473, 20474-20482, 20484-20485, 20508-20510, 20514 EXC. 20530
- c** ⇒ D/B 03/1999

HOOD (Figure 1-2)



HP120493

HOOD

ITEM	PART NO.	DESCRIPTION	QTY
1	a 1375882	Panel (LH).....	1
1	ac 1544060	Panel (LH Vented)	1
1	b 1375881	Panel (LH).....	1
1	bc 1544054	Panel (LH Vented)	1
2	1375880	Panel (RH)	1
2	c 1544053	Panel (RH Vented).....	1
3	1375879	Panel (Front)	1
4	1471866	Striker	1
5	2036143	Latch	1
6	1371414	Washer	1
7	1371589	Hood	1
8	d 1389426	Seat Pan	1
8	e 1480020	Seat Pan	1
9	1362714	Cotter Pin.....	2
10	237947	Pin	2
11	1565553	Capscrew.....	2
12	1385115	Label (Locking Latch)	1
13	292681	Lockwasher.....	16
14	239503	Nut	8
15	1347088	Stop Screw	2
16	15001	Nut	4
17	264144	Nut	1
18	d 1351598	Crossmember	1
18	e 1480022	Crossmember	1
19	d 1377992	Gas Spring.....	2
19	e 1392812	Gas Spring.....	2
20	d 1350285	Stud	4
20	e 1513907	Ball Stud	2
21	1347018	Clamp	6
22	1350241	Spring	4
23	1347045	Fastener.....	4
24	1378483	Liner (Hood).....	1
25	Liner (RH)	1
26	Liner (LH).....	1
27	1378484	Liner (Front)	1
28	1350282	Retainer	2
29	280644	Button	7
30	136749	Capscrew.....	2
31	302400	Locknut	6
32	320158	Washer	14
33	292515	Capscrew.....	4
34	292682	Lockwasher.....	4
35	136692	Nut	4
36	1382306	Washer	2
37	1375717	Support (Hood).....	2
38	1300117	Washer	4
39	296169	Capscrew.....	2
40	1361087	Button	6
41	1359587	Grommet.....	1
42	1375608	Corner (LH).....	1
43	1375609	Corner (RH)	1

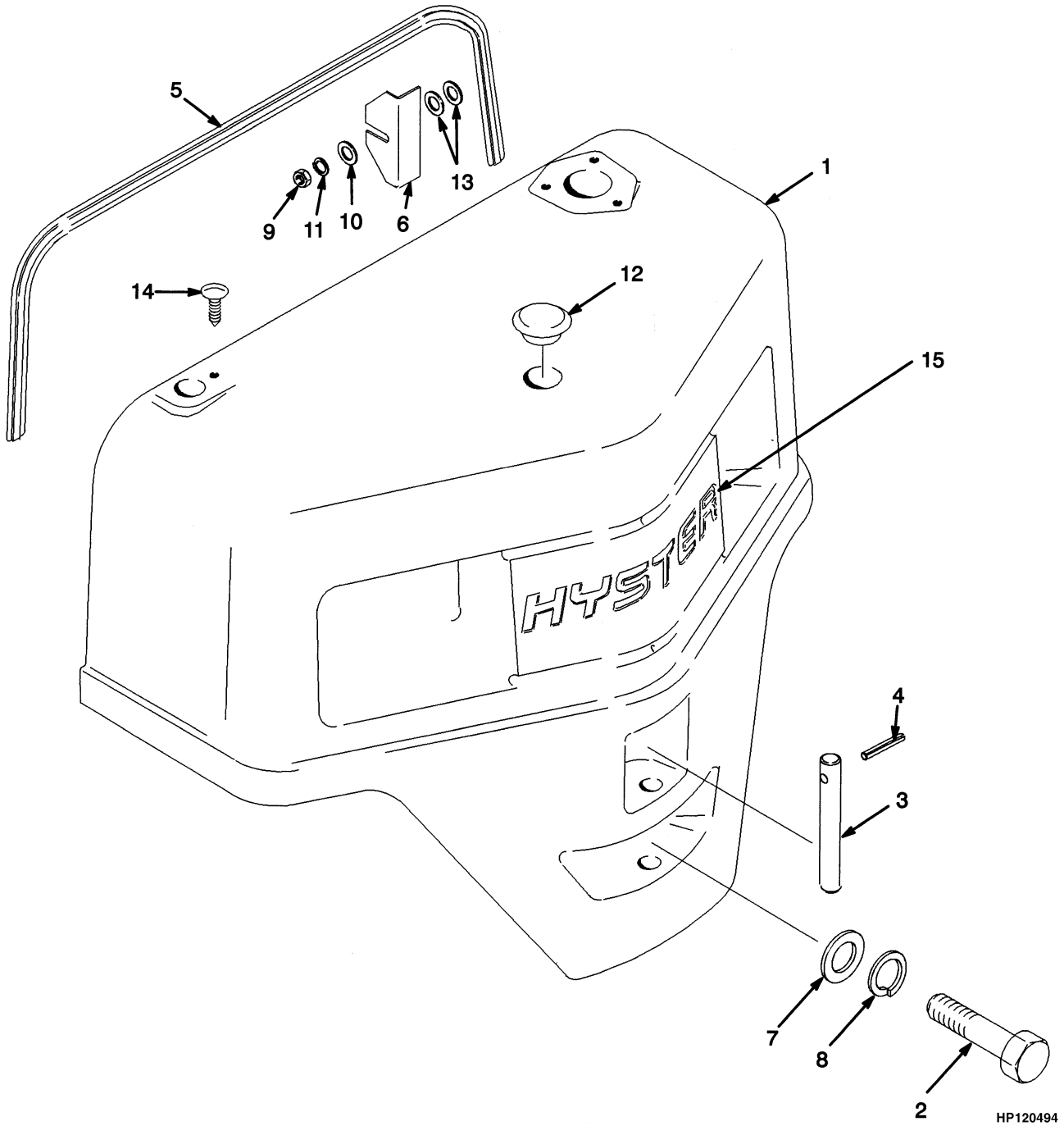
HOOD

ITEM	PART NO.	DESCRIPTION	QTY
44	329067	Screw.....	4
45	1375670	Hinge (RH).....	1
46	1375671	Hinge (LH)	1
47	287851	Capscrew.....	4
48	1378520	Latch Kit (Hood).....	2

FOOTNOTES:

- a Gasoline
- b LPG
- c Paper Industry
- d ⇒ S/N D187V-22434Y
- e S/N D187V-22435Y ⇒

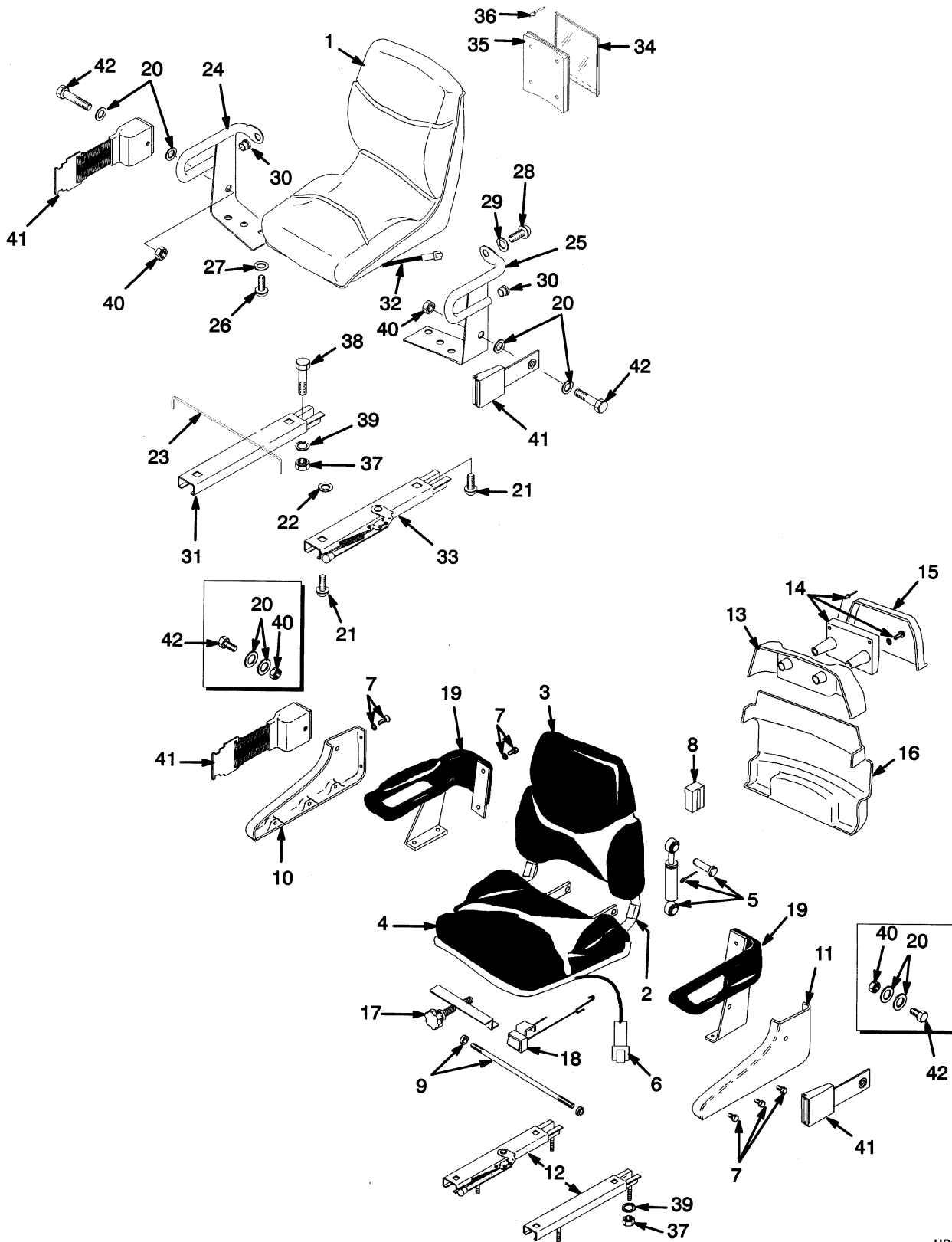
COUNTERWEIGHT (Figure 1-3)



COUNTERWEIGHT

ITEM	PART NO.	DESCRIPTION	QTY
1	1378475	Counterweight (S40XM)	1
1	1351530	Counterweight (S45XM)	1
1	1351531	Counterweight (S50XM)	1
1	1351532	Counterweight (S55XM)	1
1	1351513	Counterweight (S60XM)	1
1	1351533	Counterweight (S65XM)	1
2	292608	Capscrew (4 in.) (S40XM-S50XM)	1
2	292613	Capscrew (6 in.) (S55XM-S65XM)	1
3	1371490	Pin	1
4	302492	Pin	1
5	1371491	Seal	1
6	1335763	Shim (0.109 in.)	AR
6	1351693	Shim (0.059 in.)	AR
7	1375214	Washer	1
8	292689	Lockwasher.....	1
9	239503	Nut	4
10	320159	Washer	4
11	292681	Lockwasher.....	4
12	1350231	Plug	1
13	320159	Washer	4
14	1347045	Fastener.....	1
15	1450409	Label (Hyster) (Optional)	1

SEAT (Figure 1-4)



HP120495

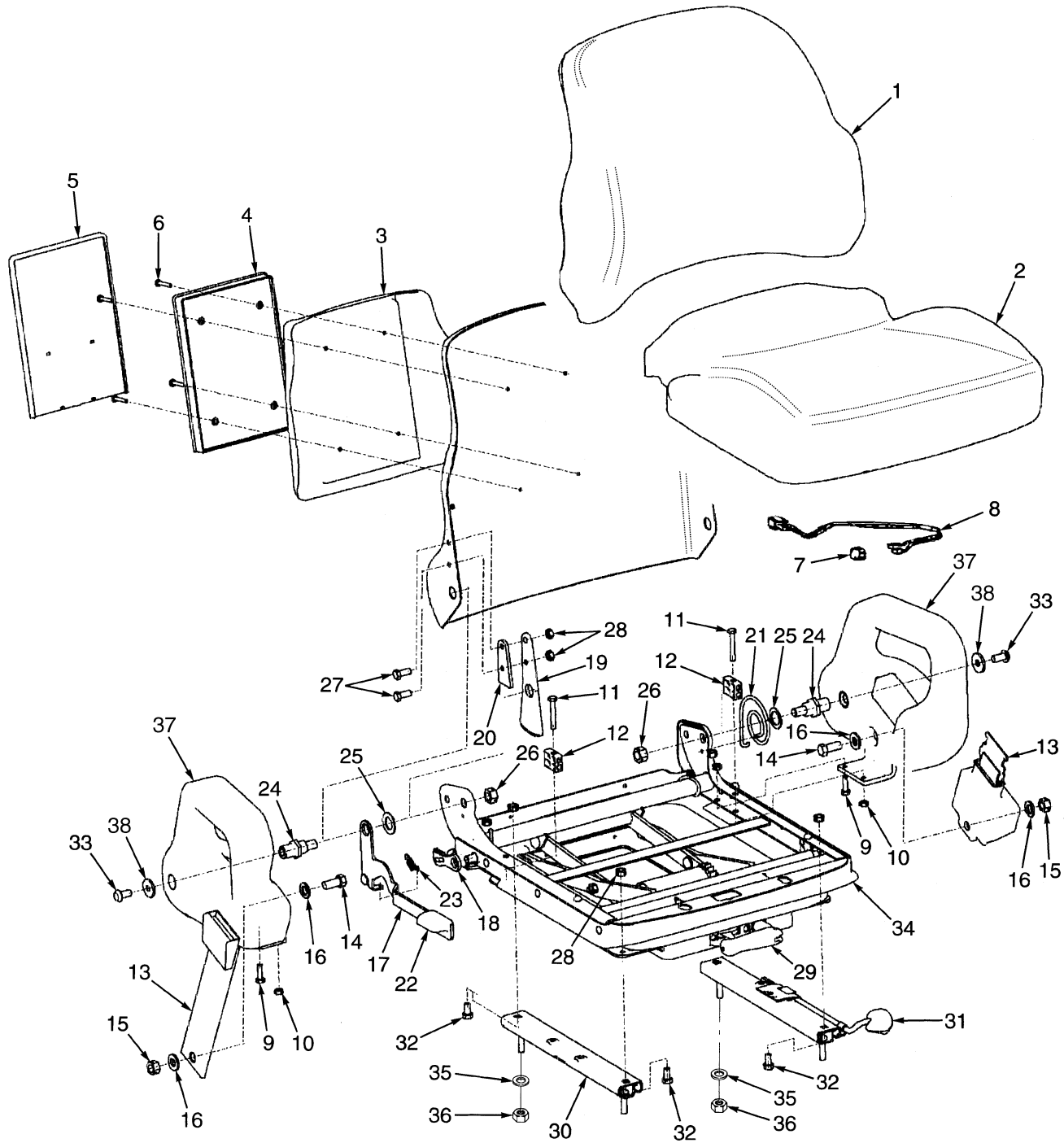
SEAT**KEY:****A: Semi Suspension****B: Non-Suspension**

ITEM	PART NO.	DESCRIPTION	QTY	
			A	B
1	1351431	Seat (Vinyl)	1
1	1351432	Seat (Fabric)	1
2	1376675	Seat (Vinyl)	1	..
2	1376676	Seat (Fabric)	1	..
3	1382111	Back Cushion (Vinyl) (Vinyl)	1	..
3	1382113	Back Cushion (Cloth) (Fabric)	1	..
4	1382112	Seat Cushion (Vinyl) (Vinyl)	1	..
4	1382114	Seat Cushion (Cloth) (Fabric)	1	..
5	1362049	Shock Absorber Kit	1	..
6	1354140	Switch Assembly	1	..
7	1362065	Hardware Kit	1	..
8	1362052	Block	1	..
9	1362053	Shaft and Bearing Kit	1	..
10	1392496	Cover (RH)	1	..
11	1392495	Cover (LH)	1	..
12	1459173	Slide Kit	1	..
13	1374188	Cover (Upper)	1	..
14	1362058	Manual Holder Kit (Information)	1	..
15	1374190	Cover (Information)	1	..
16	1360872	Cover (Lower)	1	..
17	1362061	Knob Kit	1	..
18	1362062	Tape Kit	1	..
19	1362063	Hip Restraint (LH)	1	..
19	1362064	Hip Restraint (RH)	1	..
20	379697	Washer	4	4
21	364914	Capscrew	4
22	221733	Washer	2
23	1300107	Rod	1
24	364807	Hip Restraint (RH)	1
25	364808	Hip Restraint (LH)	1
26	18727	Capscrew	4
27	18515	Washer	4
28	379197	Capscrew	2
29	379198	Washer	2
30	364854	Plug	2
31	383116	Seat Rail (RH) (RH)	1
32	1354140	Switch Assembly	1
33	335553	Seat Rail (LH)	1
34	335991	Cover (Information Case) (Information)	1
35	335988	Base (Information Case) (Information)	1
36	222029	Rivet	4
37	145639	Nut	4	4
38	18498	Capscrew	4
39	15175	Washer	4	4
40	379698	Nut	2	2

SEAT

ITEM	PART NO.	DESCRIPTION	QTY	
			A	B
41	1374750	Seat Belt	1	1
42	379199	Capscrew	2	2

SEAT (Figure 1-5) FULL SUSPENSION SHEET 1 OF 2 (D/B 03/2000⇒)



HP120496

**SEAT
FULL SUSPENSION
SHEET 1 OF 2
(D/B 03/2000⇒)**

ITEM	PART NO.	DESCRIPTION	QTY
	1476713	Suspension Seat (Vinyl)	1
	1476714	Suspension Seat (Fabric)	1
1	1470152	Back Cushion (Vinyl)	1
1	1470153	Back Cushion (Cloth)	1
2	1494076	Seat Cushion (Vinyl)	1
2	1467514	Switch	1
2	1467515	Wire Harness	1
2	1494077	Seat Cushion (Cloth)	1
3	Riser	1
4	Box	1
5	Cover	1
6	Screw	4
7	1467514	Switch	1
8	1467515	Wire Harness	1
9	Bolt	2
10	Nut	4
11	Bolt	2
12	Block	2
13	Seat Belt	1
14	Bolt	2
15	Nut	2
16	Washer	4
17	Handle	1
18	Latch	1
19	Bracket	1
20	Spacer	1
21	Spring	1
22	Knob	1
23	Spring Extension	1
24	Pivot	2
25	Washer	2
26	Nut	2
27	Bolt	2
28	Nut	6
29	1470163	Weight Adjuster Kit	1
30	Slide (RH)	1
31	Slide (LH)	1
32	Bolt	4
33	Screw	2
34	1470159	Suspension Kit	1
35	15175	Washer	4
36	145639	Nut	4
37	Hip Restraint (RH)	1
	1470155	Manual Holder Kit (Includes Items 3-6)	1
37	Hip Restraint (LH)	1
	1470156	Hip Restraint Kit (RH) (Includes Items 9-12, 33, 37-38)	1
38	Washer	2
	1470157	Hip Restraint Kit (LH) (Includes Items 9-12, 33, 37-38)	1

SEAT
FULL SUSPENSION
SHEET 1 OF 2
(D/B 03/2000⇒)

ITEM	PART NO.	DESCRIPTION	QTY
	1470158	Seat Belt Kit (Includes Items 13-16)	1
	1470164	Recliner Kit (Includes Items 17-28)	1
	1470161	Slide Kit (Includes Items 30-32)	1
	893818	Ground Wire (Not Illustrated)	1



Suggest:

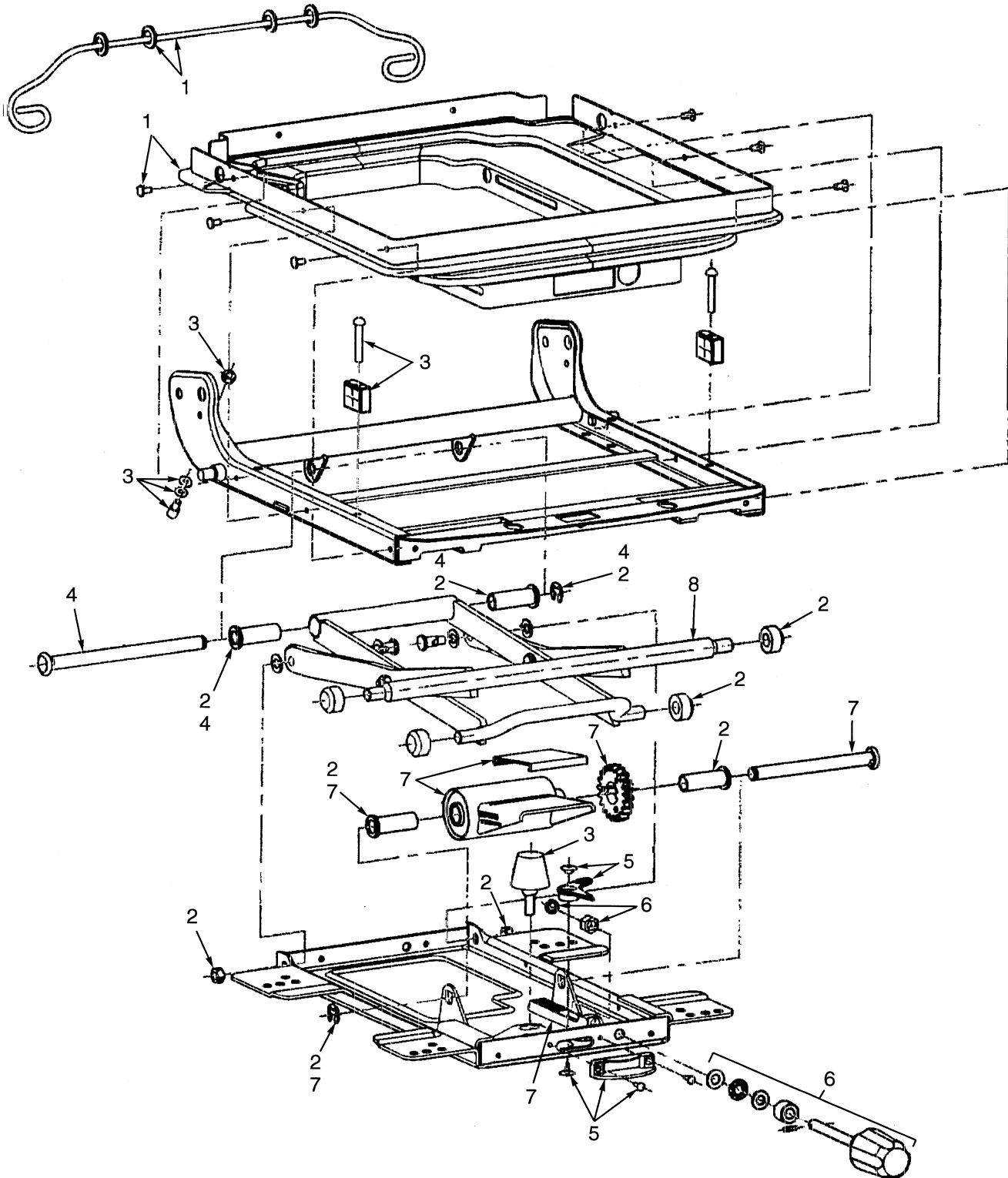
For more complete manuals. Please go to the home page.

<https://www.ebooklibonline.com>

If the above button click is invalid. Please download this document first, and then click the above link to download the complete manual.

Thank you so much for reading

SEAT (Figure 1-6) FULL SUSPENSION SHEET 2 OF 2 (D/B 03/2000⇒)



HP120497

<https://www.ebooklibonline.com>

Hello dear friend!

Thank you very much for reading.

Enter the link into your browser.

The full manual is available for immediate download.

<https://www.ebooklibonline.com>