

PARTS MANUAL

CHALLENGER

**H36.00-48.00E, -16CH
(D117)**

CUSTOMER EDITION

HYSTER

SECTIONS

1	FRAME
2	ENGINES
3	FUEL SYSTEM
4	ELECTRICAL SYSTEM
5	TRANSMISSION
6	DRIVE AXLE
7	STEERING SYSTEM
8	BRAKE SYSTEM
9	HYDRAULIC SYSTEM
10	MAST-TWO STAGE LIMITED FREE-LIFT
11	ATTACHMENTS
12	OPTIONS
13	NUMERICAL INDEX

TABLE OF CONTENTS

DESCRIPTION	PAGE
A	
ACCESSORY DRIVE PULLEY	
TIER I ENGINE	2-104
ACCUMULATOR	
ATTACHING PARTS	9-28
PISTON TYPE	9-30
ACCUMULATOR CHARGE VALVE	9-26
ATTACHING PARTS	
⇒S/N D117E-1681	9-24
AIR FILTER	
⇒S/N D117E-1581	2-130
AIR FILTER SYSTEM	
⇒S/N D117E-1581	2-132
S/N D117E-1582⇒	2-134
AIR INLET CONNECTION	
TIER II ENGINE	
⇒S/N D117E01774Z (216 KW), ⇒S/N D117E01811A (246 KW)	2-54
AIR INTAKE CONNECTION	
TIER II ENGINE	2-64
AIR OUTLET CONNECTION	
TIER II ENGINE	2-66
AIR TRANSFER CONNECTION	
TIER II ENGINE	2-68
ALTERNATOR AND MOUNTING	4-114
ANTI-SLACK DEVICE	
S/N D117E-1631↔S/N D117E-1681	9-90
ANTI-SLACK DEVICE AND LIFT INTERRUPT	
S/N D117E-1631↔S/N D117E-1681	9-92
AXLE HOUSING	
S/N D117E01800A⇒ INC. 1796 (WIDE), S/N D117E01805A⇒ INC. 1797 (NARROW)	6-26
B	
BLOCK VALVE	
ATTACHING PARTS	
EXTENDABLE ATTACHMENT WITH DEDICATED CARRIAGE	
⇒S/N D117E-1633	11-54
BRAKE LINES	
CONTROL	8-12
DISC BRAKE	
DRY BRAKE	
⇒S/N D117E-01719 WIDE, ⇒S/N D117E-01723 NARROW	8-14
OIL COOLED BRAKE	8-18
BREATHER PLUMBING	2-52
BUMPERS	
EXTENDABLE ATTACHMENT	
S/N D117E-1634⇒	11-102
C	
CAM FOLLOWER LEVER	
TIER II ENGINE	2-18
CAMSHAFT	

<https://www.ebooklibonline.com>

Hello dear friend!

Thank you very much for reading.

Enter the link into your browser.

The full manual is available for immediate download.

<https://www.ebooklibonline.com>

TABLE OF CONTENTS (Continued)

DESCRIPTION	PAGE
C (continued)	
TIER II ENGINE	2-36
CHARGED AIR COOLER	
S/N D117E01751Y⇒ (C325), S/N D117E01771Z⇒ (C290)	2-136
CONTAINER ATTACHMENT INSTALLATION	
S/N D117E-1634⇒	11-12
CONTAINER HANDLING ATTACHMENT	
ELECTRICAL	11-46
CONTROL	
LIFT AND TILT	9-54
CONTROL VALVE	
ATTACHMENT	
⇒S/N D117E-1587	9-104
S/N D117E-1503⇒	9-78
S/N D117E-1588⇒	9-82
CONTROL VALVE ATTACHING PARTS	
ONE FUNCTION	
⇒S/N D117E-1681	9-64
S/N D117E-1682⇒	9-74
TWO FUNCTION	
⇒S/N D117E-1681	9-68
WITH ANTI-SLACK AND LIFT INTERRUPT	
S/N D117E-1634↔S/N D117E-1681	9-72
COOLANT HEATER STARTING AID	
TIER II ENGINE	2-88
COOLING	
C290 ENGINE (TIER I)	2-138
C325 ENGINE	
⇒S/N D117E01750Y	2-142
OIL COOLED BRAKE	8-22
TIER II	
S/N D117E01751Y⇒ (C325), S/N D117E01771Z⇒ (C290)	2-144
CORROSION RESISTOR	2-118
COUNTERWEIGHTS	1-40
CRANKSHAFT	
TIER II ENGINE	2-15
CRANKSHAFT MAIN BEARINGS	
TIER II ENGINE	2-24
CYLINDER	
EXTENDABLE ATTACHMENT	11-74
FIXED ATTACHMENT WITHOUT SLEWING	11-72
FORK POSITIONER	12-37
TWIST LOCK	
S/N A660E-1352↔S/N D117E-1633	11-82
⇒S/N A660E-1531	11-80
S/N D117E-1634⇒	11-84
CYLINDER BLOCK	
TIER II ENGINE	2-6
CYLINDER BLOCK PLUMBING	
TIER II ENGINE	2-25
CYLINDER HEAD	

TABLE OF CONTENTS (Continued)

DESCRIPTION	PAGE
C (continued)	
TIER II ENGINE	2-8
CYLINDER LINER	
TIER II ENGINE	2-10
D	
DEDICATED CARRIAGE	
ELECTRICAL	11-44
⇒S/N D117E-1636	12-40
S/N D117E-1637⇒	12-44
DIFFERENTIAL	
⇒S/N D117E-01709X INC. 1712 WIDE, ⇒S/N D117E-01723 NARROW	6-14
S/N D117E01710X⇔S/N D117E01799A EXC. 1712 (WIDE), S/N D117E01724⇔S/N D117E01804A (NARROW).....	6-18
DIFFERENTIAL CARRIER	
S/N D117E01805A⇒ INC. 1797 (NARROW), S/N D117E01800A⇒ INC. 1796 (WIDE)	6-22
DIRECTIONAL CONTROL VALVE	
ATTACHING PARTS	
⇒S/N D117E-1633.....	9-34
S/N D117E-1634⇔S/N D117E-1681	9-36
S/N D117E-1634⇔S/N D117E-1681.....	9-38
DOOR RETAINERS	
CENTER AND LEFT MOUNTED CAB	1-17
DRIVE AXLE	
DISC BRAKE	
⇒S/N D117E-01709X WIDE, ⇒S/N D117E-01723 NARROW	6-2
OIL COOLED BRAKE	
⇒S/N D117E-01709X INC. 1712 WIDE, ⇒S/N D117E-01723 NARROW	6-6
WET BRAKE	
S/N D117E01710X⇔S/N D117E01799A EXC. 1712 (WIDE), S/N D117E01724⇔S/N D117E01804A (NARROW).....	6-10
DRIVE PULLEY	
AIR COMPRESSOR	2-46
WATER PUMP	
TIER II ENGINE	2-126
DRIVE TRAIN	
FRONT GEAR	2-56
E	
ELECTRICAL	
CHASSIS	
C325 ENGINE	
S/N D117E01751Y⇒	4-10
SHEET 1 OF 2	4-4
SHEET 2 OF 2	4-8
SIDE-SHIFT CARRIAGE	
⇒S/N D117E-1633.....	12-12
S/N D117E-1634⇒.....	12-14
ELECTRICAL ACCESSORIES	
TIER II ENGINE	4-118

TABLE OF CONTENTS (Continued)

DESCRIPTION	PAGE
E (continued)	
ELECTRONIC FOOT PEDAL MOUNT	3-22
ENGINE ASSEMBLY	2-4
ENGINE CONTROL SYSTEM	
TIER II ENGINE	2-34
ENGINE MOUNT	2-156
EXHAUST	
S/N D117E-01582Y ⇔ S/N D117E-01762Y	2-152
S/N D117E-01763Z ⇒	2-154
⇒ S/N D117E-1581	2-150
EXHAUST MANIFOLD	
TIER I ENGINE	2-110
TIER II ENGINE	2-112
EXTENDABLE ATTACHMENT	
FORK MOUNTED	11-16
GANTRY MOUNTED	11-18
HYDRAULIC	
FORK MOUNTED	
S/N D117E-1634 ⇒	11-34
GANTRY MOUNTED	
S/N D117E-1634 ⇒	11-36
S/N D117E-1634 ⇒	11-28
HYDRAULIC STOP	
S/N D117E-1634 ⇒	11-38
HYDRAULIC WITH DEDICATED CARRIAGE	
⇒ S/N D117E-1633	11-24
S/N D117E-1634 ⇒	11-32
HYDRAULIC WITH SIDE-SHIFT CARRIAGE	
⇒ S/N D117E-1633	11-20
⇒ S/N D117E-1633	11-8
WITH DEDICATED CARRIAGE	
S/N D117E1634 ⇒	11-14
EXTENDABLE CONTAINER ATTACHMENT	
ELECTRICAL	
⇒ S/N D117E-1633	11-50
S/N D117E-1634 ⇒	11-52
F	
FAN	2-128
FAN DRIVE	
TIER I ENGINE	2-58
TIER II ENGINE	2-60
FIRE EXTINGUISHER	12-38
FIXED ATTACHMENT	
DEDICATED CARRIAGE MOUNTED	11-6
HYDRAULIC	11-40
⇒ S/N D117E-1633	11-4
FLOOR PLATES AND COVERS	1-20
FLOW AMPLIFIER	7-14
ATTACHING PARTS	

TABLE OF CONTENTS (Continued)

DESCRIPTION	PAGE
F (continued)	
⇒S/N D117E-1681.....	7-16
S/N D117E-1682⇒.....	7-18
FLOW VALVE	
EXTENDABLE ATTACHMENT.....	11-94
FLYWHEEL	
TIER I ENGINE.....	2-62
FLYWHEEL HOUSING	
TIER II ENGINE.....	2-28
FORK	
5.5 X 12.....	12-36
FORK POSITIONER.....	12-34
FRONT ENGINE SUPPORT.....	2-44
FRONT GEAR COVER	
TIER II ENGINE.....	2-30
FUEL FILTER	
TIER I ENGINE.....	3-4
TIER II ENGINE.....	3-6
FUEL FILTER PLUMBING	
TIER I ENGINE.....	3-8
TIER II ENGINE.....	3-10
FUEL PLUMBING	
TIER II ENGINE.....	3-18
FUEL PUMP ASSEMBLY	
TIER II ENGINE.....	3-14
FUEL PUMP COUPLING	
TIER II ENGINE.....	3-17
FUEL PUMP DRIVE	
TIER II ENGINE.....	3-12
FUEL SYSTEM.....	3-2
G	
GANTRY CARRIAGE	
WITH MECHANICAL PILE SLOPE	
S/N D117E-1634⇒.....	12-54
WITH POWER PILE SLOPE	
SHEET 1 OF 2	
S/N D117E-1634⇒.....	12-46
SHEET 2 OF 2	
S/N D117E-1634⇒.....	12-50
GEAR HOUSING	
TIER II ENGINE.....	2-16
GENERAL TRUCK.....	1-2
H	
HANGER ASSEMBLY	
S/N D117E-1634⇒.....	12-56
HEADER HOSE.....	12-4
HEATER.....	1-28
HEATER CONTROL.....	1-30

TABLE OF CONTENTS (Continued)

DESCRIPTION	PAGE
H (continued)	
HOODS	
⇒S/N D117E-1581	1-32
S/N D117E-1582⇒	1-36
HOSE SHEAVE	
EXTENDABLE ATTACHMENT	11-88
HUB AND SHAFT	
S/N D117E01800A⇒ INC. 1796 (WIDE), S/N D117E01805A⇒ INC. 1797 (NARROW)	6-28
HYDRAULIC	
SUPPLY AND RETURN	
⇒S/N D117E-1681	9-4
S/N D117E-1682⇒	9-8
HYDRAULIC LINES	
ATTACHMENT CONTROL	9-15
JUNCTION BLOCK AND TWO-SPEED VALVE	9-18
HYDRAULIC PUMP	
MAIN	9-108
STEERING	
⇒S/N D117E01776Z	9-110
S/N D117E01777Z⇒	9-112
HYDRAULIC TANK	9-50
HYDRAULIC VALVE MOUNTING PLATE	
S/N D117E-1682⇒	9-12
HYDRAULICS	
SIDE-SHIFT CARRIAGE	
STANDARD MAST	
S/N D117E-1634⇒	12-24
WIDE MAST	
⇒S/N D117E-1633	12-20
S/N D117E-1634⇒	12-28
SIDE-SHIFT CYLINDER	
STANDARD MAST	
⇒S/N D117E-1633	12-16
I	
IDLER GEAR	
TIER II ENGINE	2-22
INDICATOR	
TWIST LOCK	11-86
INJECTOR	
TIER II ENGINE	3-20
INLET CONNECTOR	
AIR COMPRESSOR	
TIER II ENGINE	2-26
INSTRUMENT CLUSTER	
C325, AND TIER II ENGINE	4-20
INSTRUMENT PANEL	
SHEET 1 OF 2	4-12
SHEET 2 OF 2	4-16
INTAKE MANIFOLD	

TABLE OF CONTENTS (Continued)

DESCRIPTION	PAGE
I (continued)	
TIER I ENGINE	2-114
TIER II ENGINE	2-116
INTERLOCK VALVE	
TWIST LOCK	11-90
L	
LABELS	1-42
LIFT	10-6
LIFT CYLINDER	
⇒S/N D117E-1513	10-8
S/N D117E-1514⇒	10-10
LIFTING BRACKET	2-70
LIGHTS.....	4-22
M	
MANIFOLD	
ATTACHING PARTS	
S/N D117E-1681	
⇒S/N D117E-01681	9-42
S/N D117E-1682⇒	9-44
MAST.....	10-2
N	
NOISE BARRIER	
ACOUSTIC PANEL	1-26
NOISE BARRIERS	1-24
O	
OIL COOLER WATER PLUMBING	
TIER I ENGINE	2-120
TIER II ENGINE	2-122
OIL FILLER ARRANGEMENT	
HAND COVER	
TIER II ENGINE	
S/N D117E01775Z⇒ (216 KW), S/N D117E01812A⇒ (246 KW).....	2-84
TIER I ENGINE	2-78
TIER II ENGINE	
⇒S/N D117E01774Z (216 KW), ⇒S/N D117E01811A (246 KW)	2-80
S/N D117E01775Z⇒ (216 KW), S/N D117E01812A⇒ (246 KW)	2-82
OIL FILTER	
TIER II ENGINE	2-76
OIL FILTER AND COOLER HEAD	
TIER I ENGINE	2-72
TIER II ENGINE	2-74
OIL LEVEL GAUGE	
TIER II ENGINE	2-20
OIL MANIFOLD CONNECTION	2-86
OIL PAN	
TIER II ENGINE	

TABLE OF CONTENTS (Continued)

DESCRIPTION	PAGE
O (continued)	
S/N D117E01775Z⇒ (216 KW), S/N D117E01812A⇒ (246 KW)	2-42
OIL PUMP AND ATTACHING PARTS	
TIER II ENGINE	2-32
OPERATOR COMPARTMENT	
SHEET 1 OF 3	1-6
SHEET 2 OF 3	1-10
SHEET 3 OF 3	1-14
P	
PARK BRAKE	
OIL COOLED BRAKE	
S/N D117E-01720⇒ WIDE, S/N D117E-01724⇒ NARROW	8-10
PARK BRAKE AND SERVICE BRAKE	
OIL COOLED BRAKE	
⇒S/N D117E-01719 WIDE, ⇒S/N D117E-01723 NARROW	8-6
PARK BRAKE SWITCH	4-25
PILOT VALVE	9-58
PISTON AND CONNECTING ROD	
TIER II ENGINE	2-12
PISTON COOLING NOZZLE	
TIER II ENGINE	2-14
PRESSURE CHECK LINES	
⇒S/N D117E-1681	9-22
PRESSURE REDUCING VALVE	
ATTACHING PARTS	
⇒S/N D117E-1681	9-32
PARK BRAKE	
⇒S/N D117E-1681	9-61
PILOT CIRCUIT	
⇒S/N D117E-1681	9-60
R	
RADIATOR	2-148
RADIATOR PLUMBING	
TIER II ENGINE	
⇒S/N D117E01774Z (216 KW), ⇒S/N D117E01811A (246 KW)	2-106
S/N D117E01775Z⇒ (216 KW), S/N D117E01812A⇒ (246 KW)	2-108
RELAY VALVE	
⇒S/N D117E-01719 WIDE, ⇒S/N D117E-01723 NARROW	8-28
RELIEF VALVE	
ATTACHING PARTS	
⇒S/N D117E-1681	9-62
EXTENDABLE ATTACHMENT	11-92
⇒S/N D117E-1681	9-94
SIDE-SHIFT CYLINDER	
EXTENDABLE ATTACHMENT WITH DEDICATED CARRIAGE	11-96
SLEWING CYLINDER	11-95
TWIST LOCK AND EXTENDABLE ATTACHMENT CYLINDER	11-93
RETURN MANIFOLD	

TABLE OF CONTENTS (Continued)

DESCRIPTION	PAGE
R (continued)	
⇒S/N D117E-1681	9-48
ROCKER LEVERS	
TIER II ENGINE	2-38
S	
SEAT ASSEMBLY	
HIGH BACK	
KAB	
PENDING PER ECN 68224-09⇒.....	1-48
KAB	
⇒PENDING PER ECN 68224-09	1-46
SEQUENCE AND SHUTTLE VALVE	
ATTACHING PARTS.....	9-84
SEQUENCE VALVE	
DISC BRAKE	
⇒S/N D117E-01719 WIDE, ⇒S/N D117E-01723 NARROW	9-96
SERVICE BRAKE	
DISC BRAKE	
DRY BRAKE	
⇒S/N D117E-01719 WIDE, ⇒S/N D117E-01723 NARROW.....	8-4
OIL COOLED BRAKE.....	8-2
SHUT-OFF COCK AND SEQUENCE VALVE	
ATTACHING PARTS	
⇒S/N D117E-1681.....	9-16
SHUTTLE VALVE	
⇒S/N D117E01682X.....	8-30
SIDE-SHIFT CARRIAGE	
SHEET 1 OF 2.....	12-6
SHEET 2 OF 2.....	12-10
SIDE-SHIFT CYLINDER	12-32
GANTRY MOUNTED CARRIAGE	
S/N D117E-1634⇒.....	11-79
WITH DEDICATED CARRIAGE	
⇒S/N D117E-1633.....	11-76
S/N D117E-1634⇒.....	11-78
SLEWING CYLINDER	
EXTENDABLE ATTACHMENT GANTRY MOUNTED CARRIAGE	
S/N D117E-1634⇒.....	11-71
EXTENDABLE ATTACHMENT WITH DEDICATED CARRIAGE	
S/N D117E-1634⇒.....	11-70
SLEWING CYLINDER AND ATTACHING PARTS.....	11-68
SOLENOID VALVE	
ATTACHING PARTS.....	9-88
CARRIAGE	9-106
PARK BRAKE	
⇒S/N D117E-1681.....	9-86
STANDARD CARRIAGE.....	10-12
ELECTRICAL.....	10-16
HYDRAULIC	10-14

TABLE OF CONTENTS (Continued)

DESCRIPTION	PAGE
S (continued)	
STARTER MOTOR	
TIER II ENGINE	4-120
STEERING	7-2
STEERING AXLE	7-6
STEERING CONTROL VALVE.....	7-12
STEERING CYLINDER.....	7-10
STROBE LIGHT	12-58
SUSPENSION SEAT	
GRAMMER HIGH BACK	
SHEET 1 OF 2	1-50
SHEET 2 OF 2	1-54
T	
TENSION BAR INSTALLATION	1-3
THERMOSTAT.....	2-102
THERMOSTAT HOUSING.....	2-100
THROTTLE LINKAGE	
DECLUTCH/DETHROTTLE	
S/N D117E-1618⇔S/N D117E-1726	3-30
⇒S/N D117E-1617, S/N D117E-1727⇒	3-26
THROTTLE PEDAL ASSEMBLY	
ELECTRONIC	
S/N D117E01771Z⇒ (C290), S/N D117E01751Y⇒ (C325 C325)	3-24
TILT CYLINDER	9-102
TILT HYDRAULIC.....	9-98
TILT RELIEF VALVE	
⇒S/N D117E01852B	9-101
TIRE AND WHEEL	12-2
TRANSMISSION	
C290, 34000 AND 36000 SERIES	
CASE AND REAR COVER	5-10
CONTROL VALVE, ELECTRIC INCHING	5-38
CONTROL VALVE, HYDRAULIC INCHING	
⇒S/N D117E-1617	5-42
DIPSTICK.....	5-37
FIRST SPEED CLUTCH	5-24
FORWARD CLUTCH	5-22
FOURTH SPEED CLUTCH.....	5-34
PUMP DRIVE	5-18
REGULATOR VALVE AND CHARGE PUMP	5-20
SECOND AND REVERSE SPEED CLUTCH	5-28
THIRD SPEED CLUTCH.....	5-30
TORQUE CONVERTER AND DRIVE PLATE	5-12
TORQUE CONVERTER HOUSING.....	5-14
C330, 40000 SERIES	
CASE AND REAR COVER	5-50
ELECTRIC CONTROL VALVE	5-82
FIRST SPEED CLUTCH SHAFT	5-72
FIRST SPEED GEARS	5-67

TABLE OF CONTENTS (Continued)

DESCRIPTION	PAGE
T (continued)	
FORWARD CLUTCH SHAFT	5-70
FORWARD, REVERSE, SECOND AND FOURTH CLUTCH SHAFT	5-80
FOURTH SPEED CLUTCH SHAFT	5-78
INPUT DRIVE GEARS	5-62
MODULATOR VALVE	5-84
OUTPUT FLANGE AND SHAFT	5-64
OUTPUT SHAFT GEARS	5-66
PUMP DRIVE	5-60
REGULATING VALVE AND CHARGE PUMP	5-86
SECOND AND REVERSE CLUTCH SHAFT	5-74
THIRD SPEED CLUTCH SHAFT	5-76
THIRD SPEED GEARS	5-68
TORQUE CONVERTER AND DRIVE PLATE	5-56
TORQUE CONVERTER HOUSING	5-58
TURBINE SHAFT, STATOR SUPPORT AND OIL BAFFLE	5-54
CONTROL	5-2
GEAR SELECTOR	
⇒S/N D117E-1743.....	5-6
S/N D117E-1744⇒.....	5-8
GEAR SELECTOR MOUNTING	
S/N D117E-1744⇒.....	5-9
TRANSMISSION ATTACHING PARTS	
C290, 36000 SERIES	
S/N D117E-01771Z⇒	5-46
TRANSMISSION ATTACHING PARTS AND OIL FILTER	
C290, 34000 AND 36000 SERIES	
⇒S/N D117E-01770Z	5-44
C330, 40000 SERIES	
S/N D117E-01751Y⇒	5-48
TREADLE VALVE	
INCHING	
⇒S/N D117E-1550.....	8-26
SERVICE BRAKE	8-24
TURBOCHARGER	
TIER I ENGINE	2-90
TIER II ENGINE	2-92
TURBOCHARGER PLUMBING	
TIER I ENGINE	2-94
TIER II ENGINE	
⇒S/N D117E01774Z (216 KW), ⇒S/N D117E01811A (246 KW)	2-96
S/N D117E01775Z⇒ (216 KW), S/N D117E01812A⇒ (246 KW)	2-98
TWIST LOCK.....	11-60
EXTENDABLE ATTACHMENT	
SHEET 1 OF 2	11-64
SHEET 2 OF 2	11-66
TWO-SPEED LIFT VALVE	9-40

TABLE OF CONTENTS (Continued)

DESCRIPTION	PAGE
U	
UNIVERSAL SHAFT	6-30
V	
VALVE	
EXTENDABLE ATTACHMENT FORK MOUNTED	
S/N D117E-1634⇒.....	11-58
EXTENDABLE ATTACHMENT WITH DEDICATED CARRIAGE	
S/N D117E-1634⇒.....	11-56
VALVE COVER	2-40
VIBRATION DAMPER	
TIER I ENGINE	2-48
TIER II ENGINE	2-50
W	
WATER PUMP	2-124
WEAR PADS	
EXTENDABLE ATTACHMENT	
S/N D117E-1634⇒.....	11-100
WEAR PLATE	
EXTENDABLE ATTACHMENT	
⇒S/N D117E-1633.....	11-98
WINDSHIELD WASHER	1-18
WIRE HARNESS	
ADAPTER	
⇒S/N D117E-1633.....	4-26
WIPER MOTOR	4-27
ANTI-SLACK	
S/N D117E-1631↔S/N D117E-1681	4-28
S/N D117E-1682⇒.....	4-29
ATTACHMENT LIGHT SWITCH	
S/N D117E-1634⇒.....	4-30
CAB	
⇒S/N D117E-1743.....	4-32
S/N D117E-1744⇒.....	4-34
CONTAINER ATTACHMENT	
S/N D117E-1634⇒.....	4-38
⇒S/N D117E1633.....	4-36
DECLUTCH	
D/B 07/1998⇒.....	4-40
S/N D117E-1720⇒.....	4-41
DIAGNOSIS	
S/N D117E-1751⇒.....	4-45
TIER II	
S/N D117E01751Y⇒ (C325), S/N D117E01771Z⇒ (C290).....	4-43
WITH C325 ENGINE	
⇒S/N D117E01750Y.....	4-42
ECM POWER SUPPLY	
C325 ENGINE	
S/N D117E01751Y⇒.....	4-46
ENGINE COMPARTMENT	
C325 ENGINE	

TABLE OF CONTENTS (Continued)

DESCRIPTION	PAGE
W (continued)	
S/N D117E01751Y⇒.....	4-47
D/B 01/1996⇔S/N D117E-1634	4-48
SHEET 1 OF 2	
S/N D117E-1634⇒.....	4-50
SHEET 2 OF 2	
S/N D117E-1634⇒.....	4-52
GAUGE	
C290	
S/N D117E-1717⇒.....	4-62
D/B 09/1990⇔D/B 06/1999.....	4-58
D/B 09/1991⇒.....	4-60
S/N D117E-1717⇒.....	4-56
TIER II	
S/N D117E01751Y⇒ (C325), S/N D117E01771Z⇒ (C290).....	4-55
WITH ENGINE C325	
⇒S/N D117E01750Y.....	4-54
GEAR SHIFT	
S/N D117E-1634⇔S/N D117E-1720	4-64
S/N D117E01751Y⇒ (C325), S/N D117E01771Z⇒ (C290).....	4-66
IDLE VALIDATION SWITCH	
S/N D117E-1751⇒.....	4-68
LOCK AND LIFT CONTROL	
S/N D117E-1634⇒.....	4-70
MAIN LIGHTS	
⇒D/B 02/1990.....	4-72
S/N D117E-1634⇒.....	4-74
OPERATOR COMPARTMENT	
C325 ENGINE	
S/N D117E01751Y⇒.....	4-88
S/N D117E-1634⇒.....	4-76
S/N D117E-1751⇒.....	4-86
SHEET 1 OF 2	
D/B 06/1999⇒.....	4-82
⇒D/B 06/1999.....	4-78
SHEET 2 OF 2	
D/B 06/1999⇒.....	4-84
⇒D/B 06/1999.....	4-80
PARK BRAKE.....	4-90
POWER SUPPLY.....	4-92
REAR LIGHTS	
⇒S/N D117E-1751.....	4-93
STEERING COLUMN.....	4-95
⇒D/B 04/1998.....	4-96
STOP AND TAIL LIGHTS	
S/N D117E-1752⇒.....	4-94
THROTTLE	
C325 ENGINE	
S/N D117E01751Y⇒.....	4-98
TRANSMISSION AND ATTACHMENT	
S/N D117E-1996⇔S/N D117E-1633	4-100

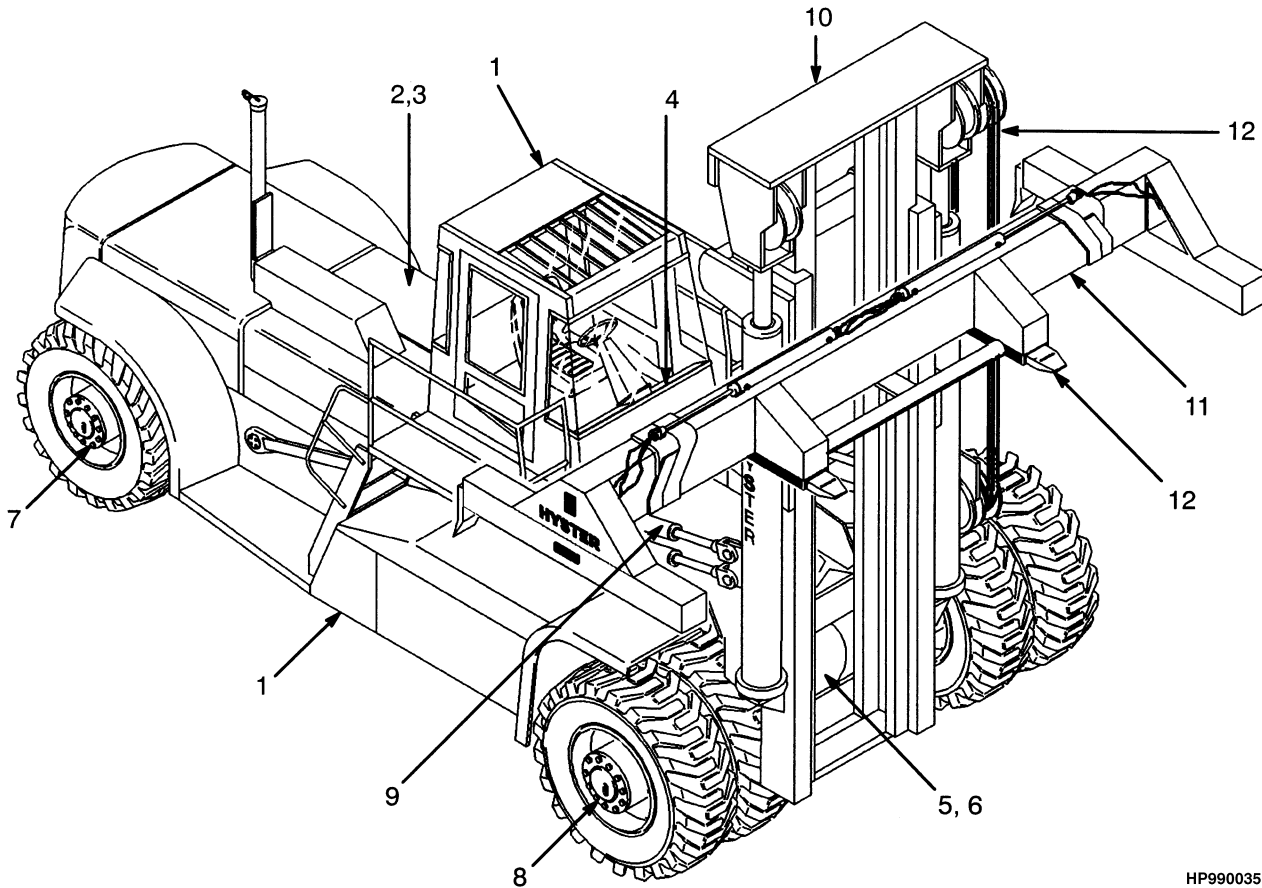
TABLE OF CONTENTS (Continued)

DESCRIPTION	PAGE
W (continued)	
TRANSMISSION CONTROL	4-106
C250 ENGINE	
S/N D117E-1618⇒	4-102
TRANSMISSION CONTROL AND JUMPER	
C325 ENGINE	
S/N D117E01751Y⇒	4-103
S/N D117E-1720⇒	4-104
TRANSMISSION OIL TEMPERATURE	4-107
TURN SIGNAL	4-109
C290 - C325 ENGINE	4-108
VALVE	
S/N D117E-1682⇒	4-110
WORK LIGHTS	4-112
WIRING ACCESSORIES	
ELECTRONIC CONTROL MODULE	
TIER II ENGINE	4-116

SECTION 1
FRAME

DESCRIPTION	PAGE
COUNTERWEIGHTS	1-40
DOOR RETAINERS	
CENTER AND LEFT MOUNTED CAB	1-17
FLOOR PLATES AND COVERS	1-20
GENERAL TRUCK	1-2
HEATER	1-28
HEATER CONTROL	1-30
HOODS	
⇒S/N D117E-1581	1-32
S/N D117E-1582⇒	1-36
LABELS	1-42
NOISE BARRIER	
ACOUSTIC PANEL	1-26
NOISE BARRIERS	1-24
OPERATOR COMPARTMENT	
SHEET 1 OF 3	1-6
SHEET 2 OF 3	1-10
SHEET 3 OF 3	1-14
SEAT ASSEMBLY	
HIGH BACK	
KAB	
PENDING PER ECN 68224-09⇒	1-48
KAB	
⇒PENDING PER ECN 68224-09	1-46
SUSPENSION SEAT	
GRAMMER HIGH BACK	
SHEET 1 OF 2	1-50
SHEET 2 OF 2	1-54
TENSION BAR INSTALLATION	1-3
WINDSHIELD WASHER	1-18

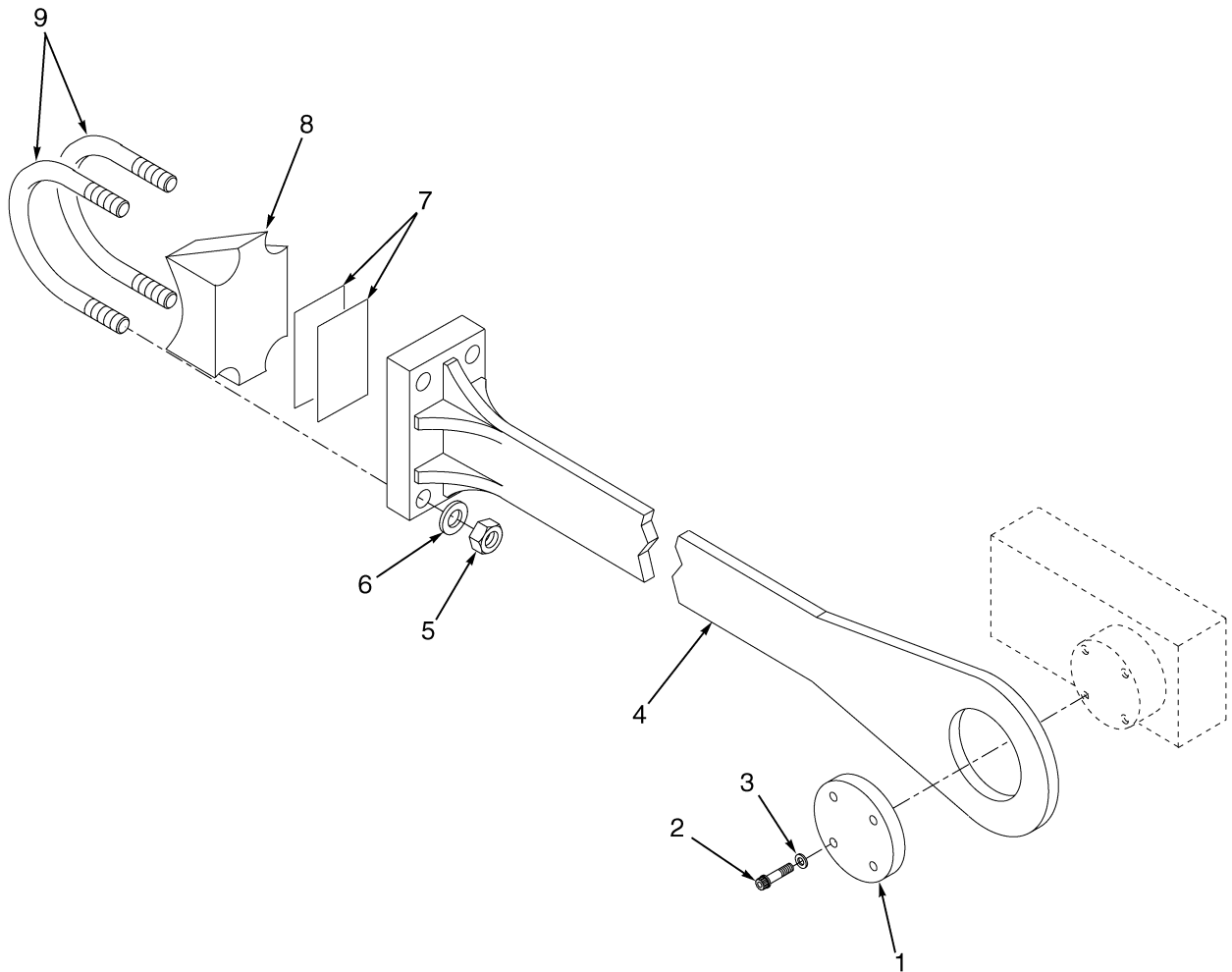
GENERAL TRUCK (Figure 1-1)



HP990035

ITEM	PART NO.	DESCRIPTION	QTY
1	FRAME (☞ Figure 1-3)	1
2	ENGINES (☞ Figure 2-1)	1
3	FUEL SYSYTEM (☞ Figure 3-1)	1
4	ELECTRICAL SYSTEM (☞ Figure 4-1)	1
5	TRANSMISSION (☞ Figure 5-1)	1
6	DRIVE AXLE (☞ Figure 6-1)	1
7	STEERING SYSTEM (☞ Figure 7-2)	1
8	BRAKE SYSTEM (☞ Figure 8-2)	1
9	HYDRAULIC SYSTEM (☞ Figure 9-1)	1
10	MAST-TWO STAGE LIMITED FREE-LIFT (☞ Figure 10-1)	1
11	ATTACHMENTS (☞ Figure 11-1)	1
12	OPTIONS (☞ Figure 12-2)	1
13	NUMERICAL INDEX	1

TENSION BAR INSTALLATION (Figure 1-2)

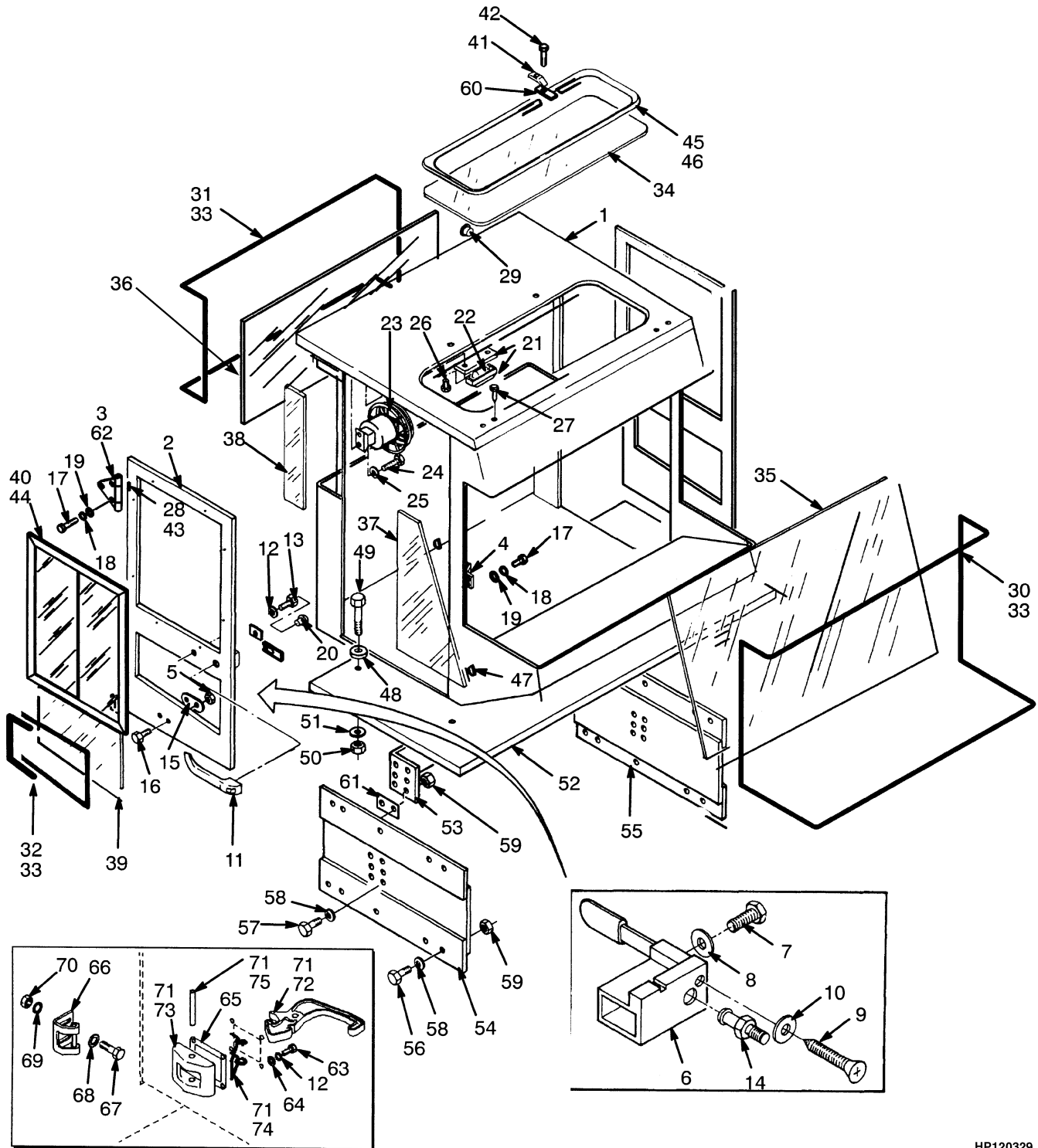


HP120692

TENSION BAR INSTALLATION

ITEM	PART NO.	DESCRIPTION	QTY
1	1302856	Cap	2
2	200454	Capscrew	8
3	15158	Lockwasher	8
4	1454597	Tension Bar	2
5	53157	Nut	8
6	221780	Washer	8
7	815668	Shim (25,4 mm)	AR
7	815669	Shim (50,8 mm)	AR
8	1302863	Support	2
9	1326129	U-Bolt	4

OPERATOR COMPARTMENT (Figure 1-3) SHEET 1 OF 3



HP120329

**OPERATOR COMPARTMENT
SHEET 1 OF 3****KEY:****A: ⇒ S/N D117E-1586****B: S/N D117E-1587 ⇒**

ITEM	PART NO.	DESCRIPTION	QTY	
			A	B
1	376582	Compartment.....	1	..
1	1380623	Operator Compartment.....	..	1
2	1300995	Door (LH).....	1	..
2	1300996	Door (RH).....	1	..
2	1377726	Door (LH).....	..	1
2	1377727	Door (RH).....	..	1
3	1300978	Hinge (LH).....	2	..
3	1300979	Hinge (RH).....	2	..
4	1300980	Striker Plate.....	2	2
5	302399	Nut.....	4	..
6	1309824	Door Handle (LH).....	1	1
6	1312450	Door Handle (RH).....	1	1
7	302248	Screw.....	4	4
8	292679	Lockwasher.....	4	4
9	296464	Screw.....	4	4
10	296396	Washer.....	4	4
11	1319177	Door Handle.....	2	2
11	1360777	Key.....	1	1
12	292680	Lockwasher.....	2	10
13	302256	Screw.....	2	2
14	365344	Bolt.....	2	2
15	3047418	Plate.....	2	..
16	353144	Capscrew.....	4	..
17	1301705	Capscrew.....	16	4
18	1301707	Washer.....	16	4
19	1301706	Lockwasher.....	16	4
20	309666	Plug.....	2	2
21	1301254	Dome Light.....	1	1
22	1307051	Bulb.....	2	2
23	1312226	Fan Assembly.....	1	1
23	181045	Connector.....	1	1
23	134810	Terminal.....	1	1
23	1301783	Ring.....	1	1
24	16750	Screw.....	4	4
25	15152	Lockwasher.....	4	4
26	1301284	Screw.....	2	2
27	1307737	Fastener.....	4	4
28	288394	Sealant.....	AR	AR
29	1311217	Plug.....	2	2
30	1346426	Seal (Front Window).....	1	1
31	376064	Seal (Rear Window).....	1	1
32	376867	Seal (Door Window).....	1	1
32	376868	Seal (Door Window).....	1	1
33	376922	Lock Strip.....	AR	AR
34	1463773	Window (Top).....	1	1
35	1346424	Glass (Front).....	1	1

OPERATOR COMPARTMENT SHEET 1 OF 3

ITEM	PART NO.	DESCRIPTION	QTY	
			A	B
36	1301372	Glass (Rear)	1	1
37	1346425	Glass (Front Quarter)	2	2
38	1301374	Glass (Rear Quarter)	2	2
39	1301375	Glass (Door)	2	2
40	1375984	Window (RH)	1	1
40	1377702	Latch.....	1	1
40	1377703	Glass (Sliding).....	1	1
40	1377704	Glass (Stationary)	1	1
40	1377271	Screw	4	4
40	1375985	Window (LH).....	1	1
40	1377702	Latch.....	1	1
40	1377703	Glass (Sliding).....	1	1
40	1377704	Glass (Stationary)	1	1
40	1377271	Screw	4	4
41	1301184	Plate	3	3
42	302244	Screw.....	3	3
43	265817	Rivet.....	16	16
44	3047334	Adhesive	AR	AR
45	365337	Primer	AR	AR
46	280472	Sealant	AR	AR
47	376840	Spacer (Glass Installation)	2	2
48	c 129962	Mount.....	4	4
48	1393706	Mount.....	..	4
49	c 292535	Capscrew.....	4	4
49	292537	Capscrew.....	..	4
50	216877	Nut	8	8
51	d 284521	Washer	4	4
51	300939	Washer	4
52	1310008	Platform (Standard Mast)	1	1
52	816239	Platform (Wide Mast).....	1	1
53	1305869	Crossmember	1	1
53	376064	Seal	1
54	1305868	Support (RH)	1	1
55	1305867	Support (LH).....	1	1
56	16085	Capscrew.....	13	13
57	18589	Capscrew.....	19	19
58	15158	Lockwasher.....	32	32
59	221711	Nut	32	32
60	1342660	Strip	3	3
61	815661	Shim (1,000 mm).....	AR	AR
61	815662	Shim (2,000 mm).....	AR	AR
62	1301700	Bushing (Brass).....	4	4
63	292500	Capscrew.....	..	8
64	320156	Washer	8
65	1369496	Seal	2
66	a 1393748	Striker Plate	2
66	b 1393748	Striker Plate	6
67	b 292513	Capscrew.....	..	8
67	a 292513	Capscrew.....	..	4
68	b 320159	Washer	8
68	a 320159	Washer	4

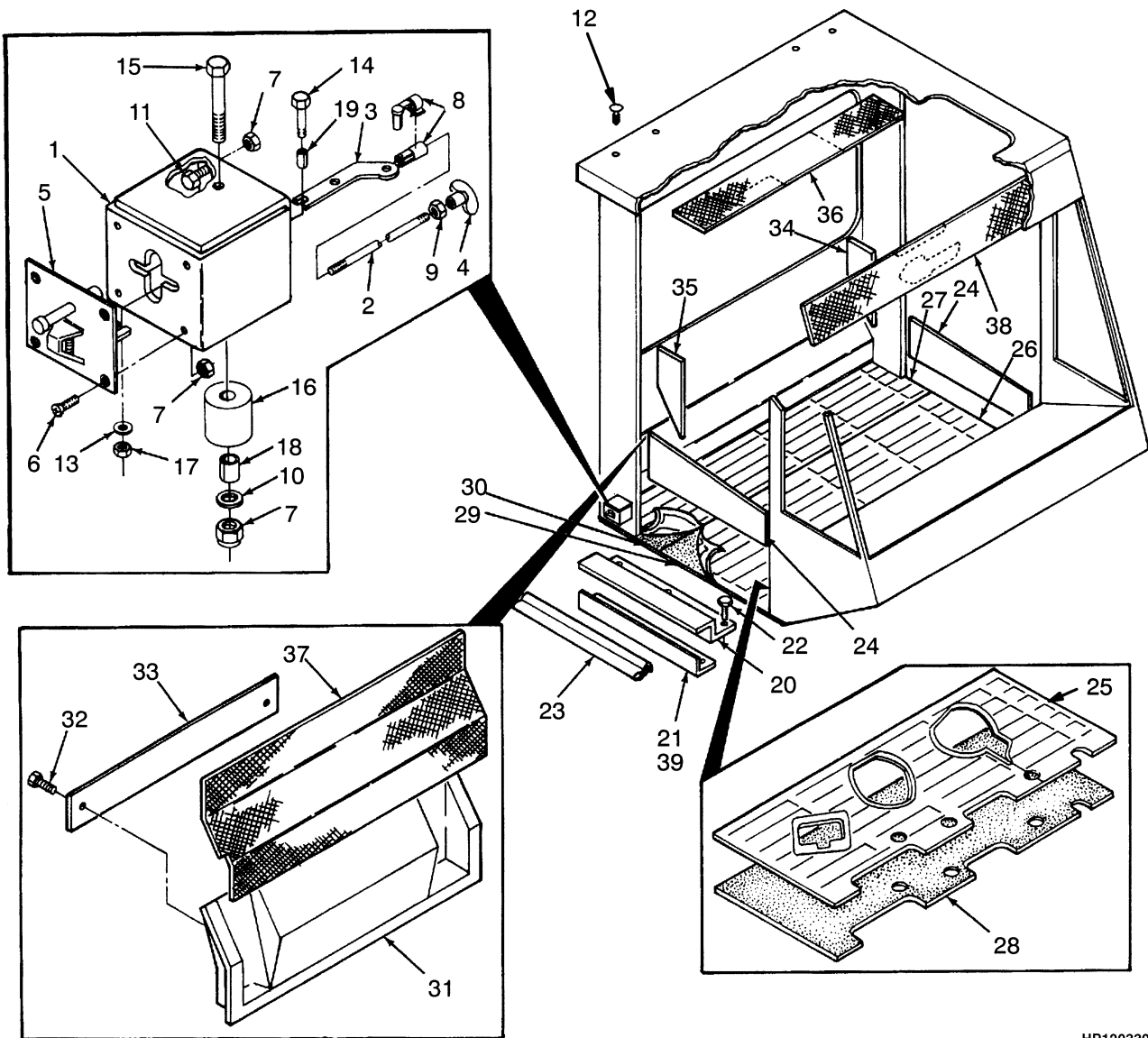
**OPERATOR COMPARTMENT
SHEET 1 OF 3**

ITEM	PART NO.	DESCRIPTION	QTY	
			A	B
69	b 292682	Lockwasher.....	..	8
69	a 292682	Lockwasher.....	..	4
70	b 136692	Nut.....	..	8
70	a 136692	Nut.....	..	4
71	1374428	Latch Assembly.....	..	2
72	1356943	Latch.....	..	1
73	1356948	Bracket.....	..	1
74	1358734	Spring.....	..	1
75	226774	Pin.....	..	1

FOOTNOTES:

- a** Center Mounted Cab
- b** Left Mounted Cab
- c** ⇒ S/N D117E-1521
- d** ⇒ S/N D117E-1545

OPERATOR COMPARTMENT (Figure 1-4) SHEET 2 OF 3



HP120330

**OPERATOR COMPARTMENT
SHEET 2 OF 3**

KEY:

A: ⇒ S/N D117E-1586

B: S/N D117E-1587 ⇒

ITEM	PART NO.	DESCRIPTION	QTY	
			A	B
1	376972	Bracket.....	2	..
2	376971	Link	2	..
3	376968	Link	2	..
4	3047329	Knob	2	..
5	3047417	Retainer	2	..
6	296472	Screw.....	8	..
7	302399	Nut	16	..
8	3047330	Rod End.....	2	..
9	292668	Nut	4	..
10	320156	Washer	2	..
11	292501	Capscrew.....	6	..
12	1307737	Fastener.....	4	..
13	320155	Washer	2	..
14	302248	Screw.....	2	..
15	292505	Capscrew.....	2	..
16	376970	Spacer	2	..
17	302398	Nut	2	..
18	1301026	Spacer	2	..
19	1301027	Spacer	2	..
20	376918	Bracket.....	2	2
21	1325576	Bracket.....	2	2
22	309637	Screw.....	12	12
23	300088	Seal (Door) (Door)	AR	AR
24	1377730	Liner (RH)	1	1
24	1377731	Liner (LH).....	1	1
25	1390686	Floormat (Front, C290)	1	1
25	a 1458200	Floormat (Front).....	1	1
25	b 1471762	Floormat (Front).....	1	1
25	a 1476894	Floormat (Front, C325)	1	1
25	b 1508217	Floormat (Front).....	1	1
26	1355026	Floormat (Rear)	1	1
27	1390684	Floormat (C325)	1	1
28	1390685	Barrier (Front, C290).....	1	1
28	a 1458199	Barrier	1	1
28	b 1471763	Barrier	1	1
28	a 1476893	Barrier (C325).....	1	1
28	b 1508218	Barrier	1	1
29	1355025	Barrier (Rear).....	1	1
30	1390682	Barrier (C325).....	1	1
31	1342664	Liner.....	2	2
32	329067	Screw.....	2	2
33	1301297	Plate	1	1
34	1301263	Liner (RH Lower)	1	1
35	1301264	Liner (LH Lower)	1	1
36	1301309	Liner (Top Rear).....	1	1
37	1301554	Liner (Lower Center).....	1	1

OPERATOR COMPARTMENT SHEET 2 OF 3

ITEM	PART NO.	DESCRIPTION	QTY	
			A	B
38	1301265	Liner (Top Front)	1	1
39	288394	Sealant	AR	AR

FOOTNOTES:

- a** ⇒ S/N D117E-1750
b S/N D117E-1751 ⇒



Suggest:

For more complete manuals. Please go to the home page.

<https://www.ebooklibonline.com>

If the above button click is invalid. Please download this document first, and then click the above link to download the complete manual.

Thank you so much for reading

<https://www.ebooklibonline.com>

Hello dear friend!

Thank you very much for reading.

Enter the link into your browser.

The full manual is available for immediate download.

<https://www.ebooklibonline.com>