

PARTS MANUAL

**E3.50XL, E4.00XL,
E4.50XL/XLS, E5.50XL
(D098)**

CUSTOMER EDITION

HYSTER

SECTIONS

1	FRAME
2	ELECTRICAL SYSTEM
3	DRIVE UNIT
4	STEERING SYSTEM
5	BRAKE/ACCELERATOR SYSTEM
6	HYDRAULIC SYSTEM
7	MAST-TWO STAGE LIMITED FREE-LIFT
8	MAST-THREE STAGE FULL FREE-LIFT
9	MAST-TWO STAGE FULL FREE-LIFT
10	OPTIONS
11	NUMERICAL INDEX

TABLE OF CONTENTS

DESCRIPTION	PAGE
A	
ACCELERATOR ASSEMBLY	5-14
ACCUMULATOR	10-2
B	
BATTERY SPACER	1-4
BRAKE ASSEMBLY	5-6
BRAKE LINKAGE	5-4
BRAKE RELAY ASSEMBLY	5-12
C	
CARRIAGE	
THREE STAGE FULL FREE-LIFT	8-24
TWO STAGE FULL FREE-LIFT	9-18
TWO STAGE LIMITED FREE-LIFT	7-14
CONTACTOR	
POWER STEERING ON-DEMAND	2-12
CONTACTOR PANEL	2-10
CONTROL PANEL	
36/48 VOLT	2-6
72/80 VOLT	2-8
CONTROL VALVE	
FOUR FUNCTION	6-20
THREE FUNCTION	6-16
COUNTERWEIGHT	1-20
D	
DC-DC CONVERTER	
36/48 VOLT TO 12 VOLT	
70/80 VOLT TO 12 VOLT	10-10
DRIVE AXLE	3-4
DRIVE LIGHTS.....	10-4
DRIVE TIRE AND WHEEL	3-2
E	
ELECTRICAL SYSTEM.....	2-2
F	
FLOOR PLATES AND COVERS	1-2
FORKS	
CLASS III	1-24
OPTIONAL	1-25
CLASS IV.....	1-28
OPTIONAL	1-29
FREE-LIFT	
THREE STAGE FULL FREE-LIFT	8-12
FREE-LIFT CYLINDER	
TWO STAGE FULL FREE-LIFT	9-14
FREE-LIFT CYLINDERS	
THREE STAGE FULL FREE-LIFT	8-20
FULL SUSPENSION SEAT	

<https://www.ebooklibonline.com>

Hello dear friend!

Thank you very much for reading.

Enter the link into your browser.

The full manual is available for immediate download.

<https://www.ebooklibonline.com>

TABLE OF CONTENTS (Continued)

DESCRIPTION	PAGE
F (continued)	
SHEET 1 OF 2.....	1-14
SHEET 2 OF 2.....	1-16
G	
GEAR PUMP.....	4-12
H	
HAND LEVERS.....	6-14
HEADER HOSE	
TWO STAGE FULL FREE-LIFT.....	9-20
MAST HEIGHTS 2790 AND 3050 MM.....	9-22
TWO STAGE LIMITED FREE-LIFT.....	7-16
MAST HEIGHTS 2790MM AND 3050MM.....	7-20
HEADER HOSES	
THREE STAGE FULL FREE-LIFT	
HEIGHTS 4940 AND 5200 MM AND ABOVE.....	8-30
HEIGHTS LESS THAN 4940 AND 5200 MM.....	8-26
HOOD.....	1-6
HYDRAULIC	
SINGLE PUMP AND MOTOR.....	6-2
HYDRAULIC FILTER.....	6-12
HYDRAULIC MOTOR.....	6-10
HYDRAULIC PLUMBING	
CONTROL VALVE.....	6-6
HYDRAULIC PUMP	
29 CC.....	6-8
HYDRAULIC SUPPLY AND RETURN.....	6-4
I	
INNER MAST	
THREE STAGE FULL FREE-LIFT.....	8-6
TWO STAGE LIMITED FREE-LIFT.....	7-4
INNER MAST AND FREE-LIFT	
TWO STAGE FULL FREE-LIFT.....	9-6
INTEGRAL SIDE-SHIFT	
THREE STAGE FULL FREE-LIFT	
E3.50-4.00XL, E4.50XLS.....	10-20
E4.50-5.50XL.....	10-22
TWO STAGE FULL FREE-LIFT	
E3.50XL, E4.00XL, E4.50XLS.....	10-16
E4.50-5.50XL.....	10-18
TWO STAGE LIMITED FREE-LIFT	
E3.50XL, E4.00XL, E4.50XLS.....	10-12
E4.50-E5.50XL.....	10-14
INTEGRAL SIDE-SHIFT CARRIAGE	
THREE STAGE FULL FREE-LIFT	
1067 MM (42 IN.) CLASS III.....	10-36
1219 MM (48 IN.) CLASS III.....	10-38
1219 MM (48 IN.) CLASS IV.....	10-40

TABLE OF CONTENTS (Continued)

DESCRIPTION	PAGE
I (continued)	
TWO STAGE FULL FREE-LIFT	
1067 MM (42 IN.) CLASS III.....	10-30
1219 MM (48 IN.) CLASS III.....	10-32
1219 MM (48 IN.) CLASS IV	10-34
TWO STAGE LIMITED FREE-LIFT	
1067 MM (42 IN.) CLASS III.....	10-24
1219 MM (48 IN.) CLASS III.....	10-26
1219 MM (48 IN.) CLASS IV	10-28
INTERMEDIATE MAST	
THREE STAGE FULL FREE-LIFT	8-4
L	
LABELS.....	1-8
LED BACK-UP AND BRAKE LIGHTS.....	10-6
LINE CONTACTOR	2-14
LOAD BACKREST EXTENSIONS	1-22
M	
MAIN LIFT	
THREE STAGE FULL FREE-LIFT	8-8
TWO STAGE LIMITED FREE-LIFT.....	7-6
MAIN LIFT CYLINDER	
TWO STAGE FULL FREE-LIFT	9-10
TWO STAGE LIMITED FREE-LIFT	
E3.50-4.00XL, E4.50XLS	7-10
E4.50-5.50XL	7-12
MAIN LIFT CYLINDERS	
THREE STAGE FULL FREE-LIFT	8-16
MAST INSTALLATION.....	6-24
MASTER CYLINDER	5-10
MONOTROL PEDAL	5-16
N	
NON SUSPENSION SEAT	1-12
O	
OUTER MAST	
THREE STAGE FULL FREE-LIFT	8-2
TWO STAGE LIMITED FREE-LIFT.....	7-2
OUTER MAST AND MAIN LIFT	
TWO STAGE FULL FREE-LIFT	9-2
OVERHEAD GUARD	
WITH CURVED LEG.....	1-18
WITH STRAIGHT LEG	1-26

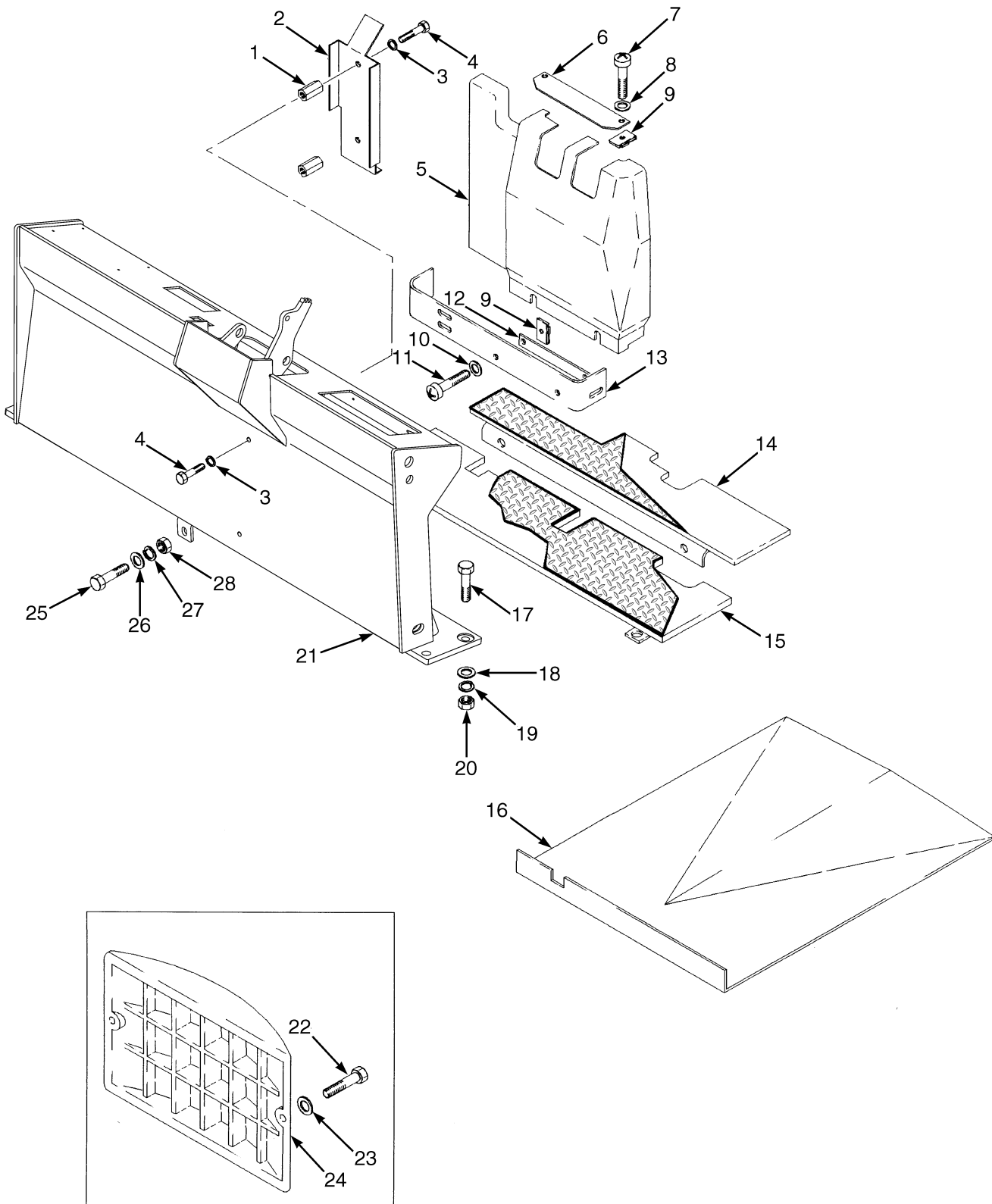
TABLE OF CONTENTS (Continued)

DESCRIPTION	PAGE
P	
PARK BRAKE LEVER ACTUATED	5-2
S	
SEMI SUSPENSION SEAT WITH ARM REST	1-10
SHIFT LEVER	4-16
STEER AXLE ASSEMBLY	4-2
STEER TIRE AND WHEEL	4-8
STEERING COLUMN.....	4-14
STEERING CYLINDER.....	4-6
STEERING MOTOR AND PUMP	4-10
STEERING PUMP	4-18
STROBE LIGHT	10-8
T	
TILT CYLINDER	6-26
TRACTION MOTOR	3-12
TRANSMISSION ASSEMBLY	3-8
W	
WIRE HARNESS	
BRAKE SWITCH.....	2-30
DASH DISPLAY	2-5
LIGHTS	2-28
MAIN CONTROL	
SHEET 1 OF 2	
S/N D098N01717C⇒	2-20
⇒S/N D098N01717C	2-16
SHEET 2 OF 2	
⇒S/N D098N01717C	2-18
S/N D098N01718C⇒	2-22
WIRE HARNESS (MAIN CONTROL)	
80 VOLT	
SHEET 1 OF 2	2-24
SHEET 2 OF 2	2-26

SECTION 1
FRAME

DESCRIPTION	PAGE
BATTERY SPACER	1-4
COUNTERWEIGHT	1-20
FLOOR PLATES AND COVERS	1-2
FORKS	
CLASS III	1-24
OPTIONAL	1-25
CLASS IV	1-28
OPTIONAL	1-29
FULL SUSPENSION SEAT	
SHEET 1 OF 2	1-14
SHEET 2 OF 2	1-16
HOOD	1-6
LABELS	1-8
LOAD BACKREST EXTENSIONS	1-22
NON SUSPENSION SEAT	1-12
OVERHEAD GUARD	
WITH CURVED LEG	1-18
WITH STRAIGHT LEG	1-26
SEMI SUSPENSION SEAT	
WITH ARM REST	1-10

FLOOR PLATES AND COVERS (Figure 1-1)



BP120094

FLOOR PLATES AND COVERS

KEY:

A: E3.50XL, E4.00XL, E4.50XLS

B: E4.50XL, E5.50XL

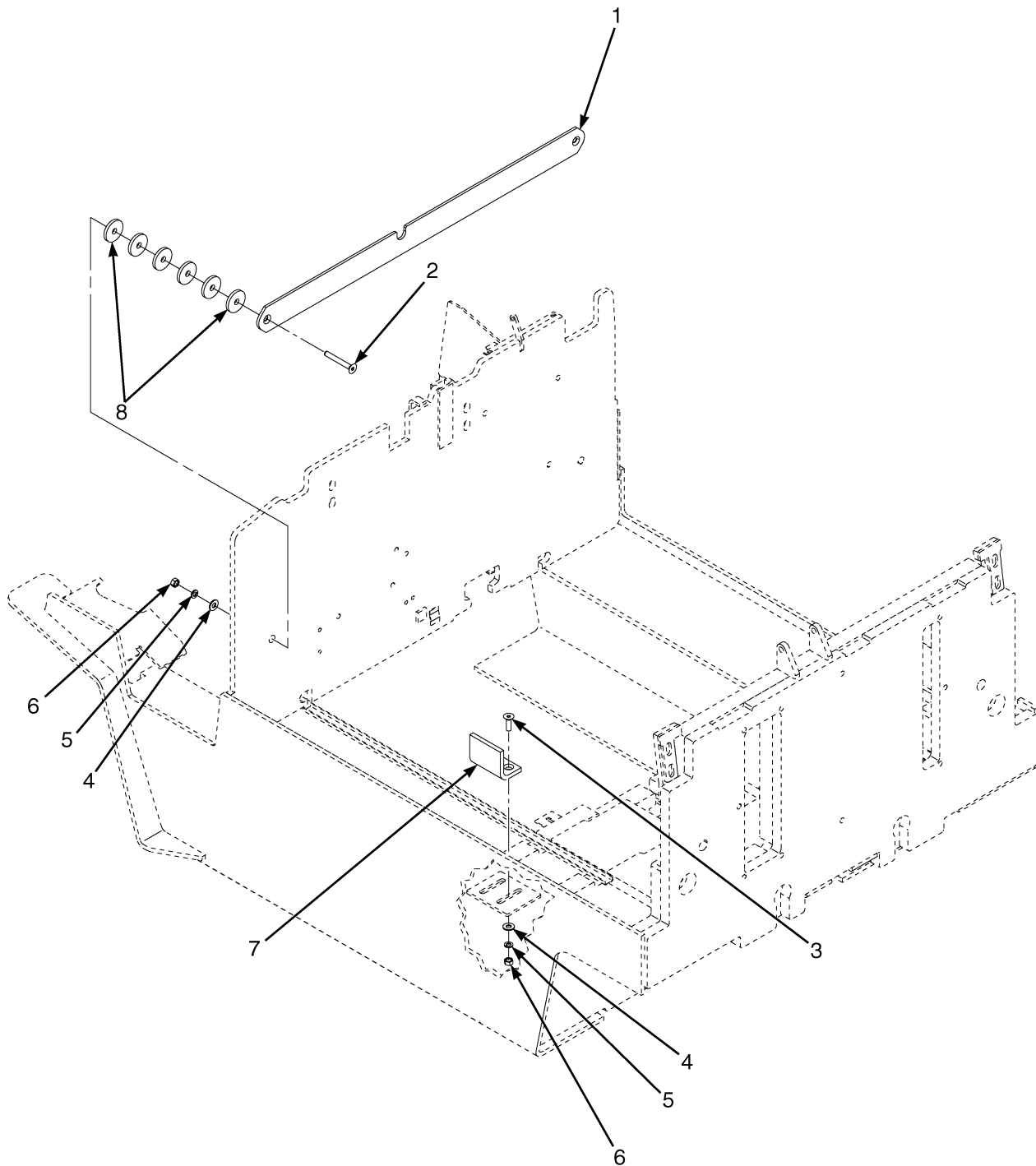
ITEM	PART NO.	DESCRIPTION	QTY	
			A	B
1	1328480	Standoff	2	2
2	1569517	Cover	1	1
3	15154	Lockwasher.....	4	4
4	18718	Capscrew.....	4	4
5	375161	Cover (Two,Three, and Four Function Valves).....	1	1
5	375162	Cover (Five Function Valve).....	1	1
6	375160	Plate	1	1
7	302049	Screw.....	6	6
8	320156	Washer	6	6
9	1354323	Nut (Foldover).....	6	6
10	320156	Washer	6	6
11	302049	Screw.....	6	6
12	325096	Plate	1	1
13	375159	Plate	1	1
14	b 1462416	Floorplate (Rear)	1	1
15	b 1462420	Floorplate (Front).....	1	1
16	1462422	Cover	1	..
16	1462423	Cover	1
17	221570	Capscrew.....	8	8
18	221771	Washer	8	8
19	15158	Lockwasher.....	8	8
20	221712	Nut	8	8
21	1569515	Cowl.....	1	1
22	16828	Capscrew.....	2	2
23	221767	Washer	2	2
24	375184	Cover	1	1
25	136985	Capscrew.....	1	1
26	320159	Washer	2	2
27	292682	Lockwasher.....	1	1
28	136692	Nut	1	1
	a 374046	Plug	1	1

FOOTNOTES:

a Not Illustrated

b Textured

BATTERY SPACER (Figure 1-2)

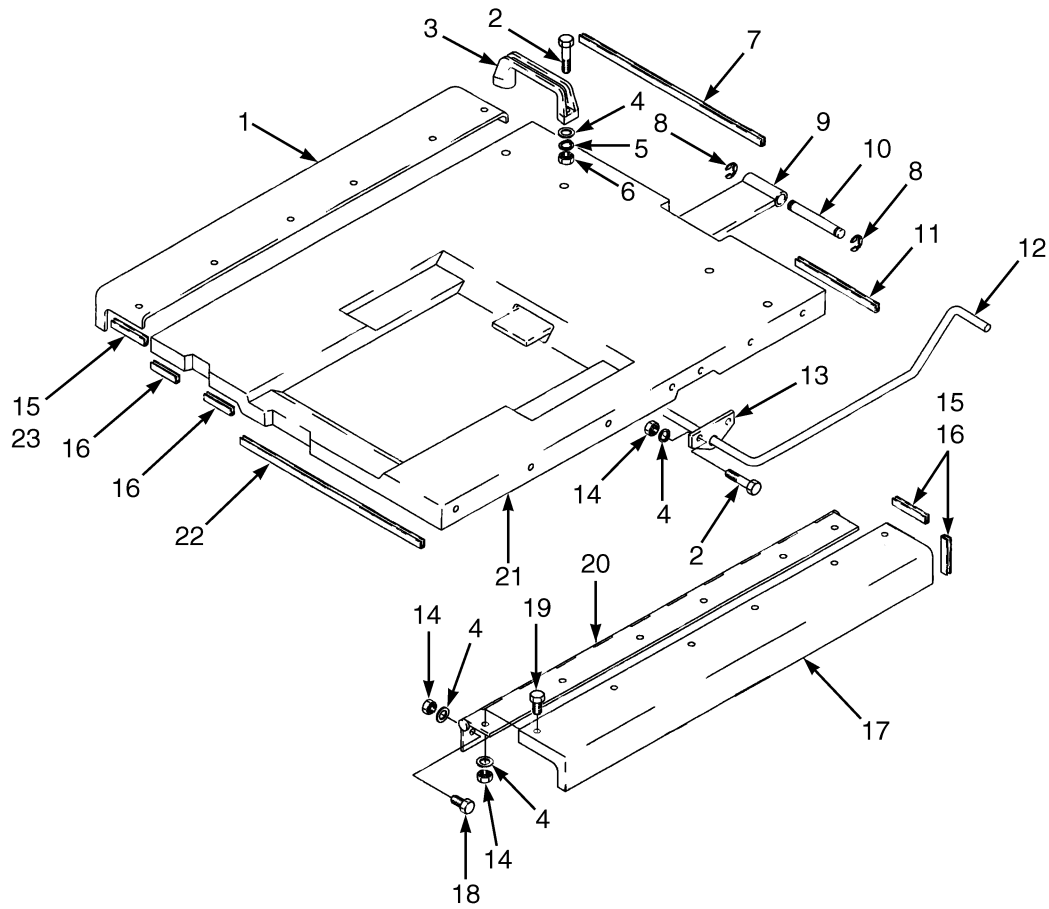


HP120828

BATTERY SPACER

ITEM	PART NO.	DESCRIPTION	QTY
1	375249	Plate	1
2	296248	Capscrew.....	2
3	296241	Capscrew.....	4
4	296421	Washer	6
5	292682	Lockwasher.....	6
6	136692	Nut	6
7	375226	Spacer	2
8	361973	Spacer	12

HOOD (Figure 1-3)

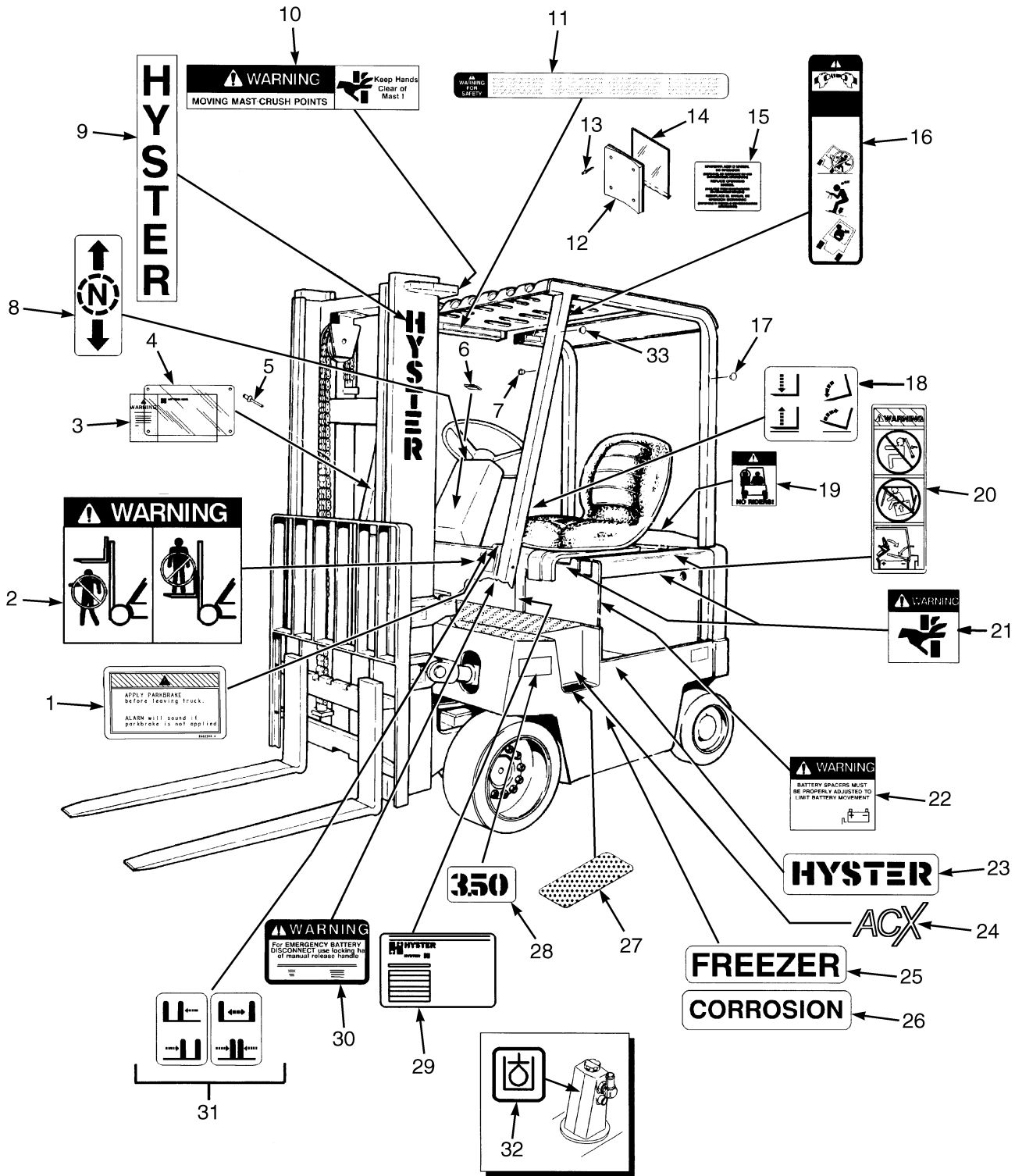


HP120820

HOOD**KEY:****A: E3.50XL, E4.00XL, E4.50XLS****B: E4.50XL, E5.50XL**

ITEM	PART NO.	DESCRIPTION	QTY	
			A	B
1	1462078	Hood (RH)	1	..
1	1462079	Hood (RH)	1
2	287816	Capscrew.....	8	8
3	362030	Handle	2	2
4	320156	Washer	30	30
5	292680	Lockwasher.....	4	4
6	136687	Nut	4	4
7	375296	Trim	1	1
8	182118	Retaining Ring	2	2
9	1302506	Plate	1	..
9	1302507	Plate	1
10	1302519	Pin	1	1
11	375295	Trim.....	1	1
12	1302505	Hinge	1	1
13	388768	Bracket.....	2	2
14	313805	Nut	26	26
15	362043	Adhesive	AR	AR
16	325980	Trim	4	4
17	1462074	Hood (LH).....	1	..
17	1462075	Hood (LH).....	..	1
18	292500	Capscrew.....	10	10
19	296215	Capscrew.....	12	12
20	1462088	Hinge	2	..
20	1462089	Hinge	2
21	1461930	Hood	1	..
21	1461931	Hood	1
22	362031	Trim	1	1
23	388752	Trim	2	2

LABELS (Figure 1-4)

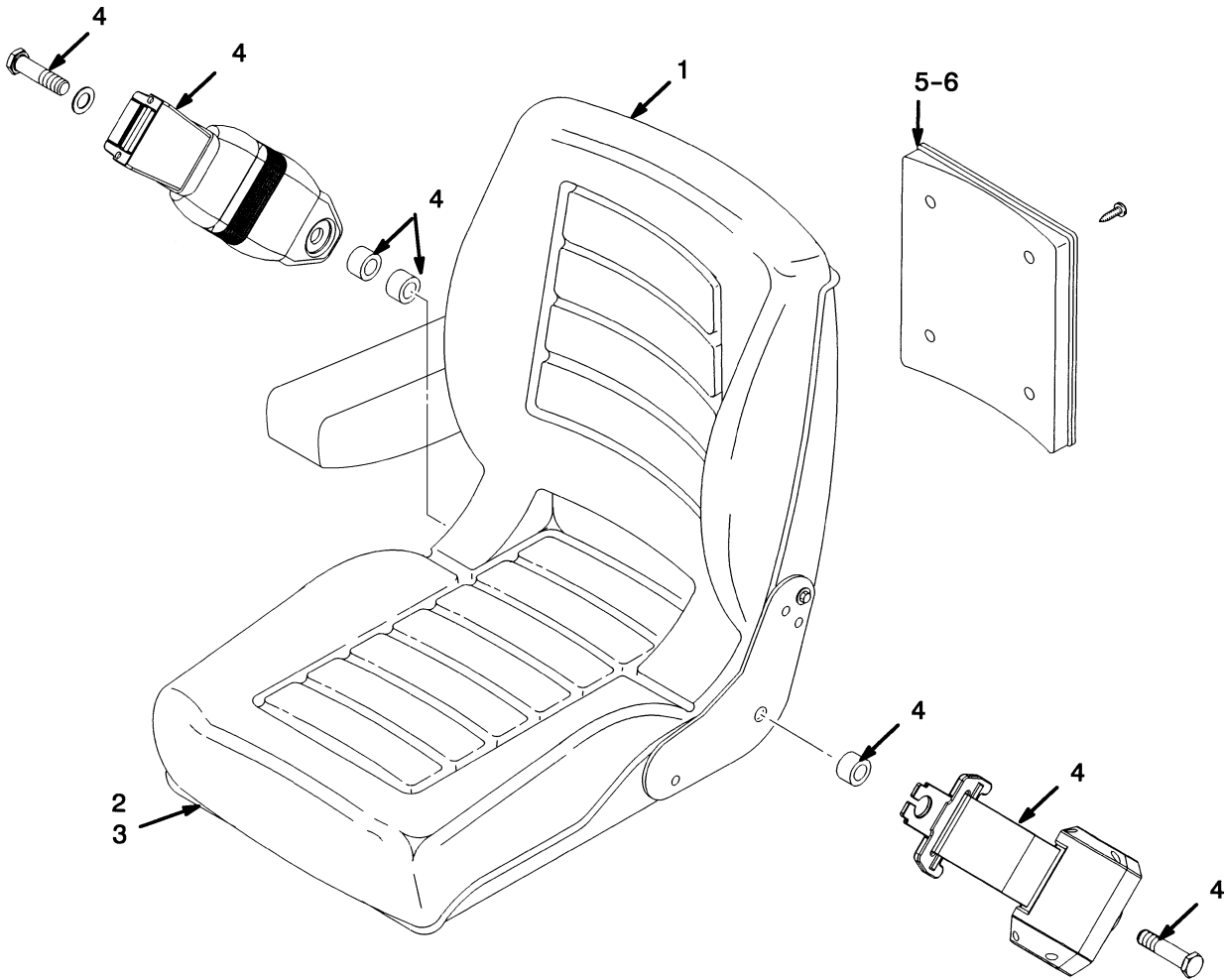


HP120838

LABELS

ITEM	PART NO.	DESCRIPTION	QTY
1	2310911	Label (Parking Brake Warning) (Without Seat Brake)	1
2	1339830	Label (Mast Warning)	2
3	1471618	Label (Nameplate) (EEC)	1
3	1495293	Nameplate (Non-EEC).....	1
4	389687	Nameplate Cover.....	1
5	1380584	Rivet.....	4
6	374046	Plug (Panel)	1
7	1363917	Plug	2
8	309684	Label (Forward/Reverse)	1
9	1344132	Label (Hyster) (Vertical).....	2
9	1345836	Label (Hyster) (Vertical) (With Hose Reel or Mast Headlights).....	2
10	1343276	Label (Mast Warning)	1
11	1373909	Label (Operator Warning) (With Operator Restraint).....	1
12	335988	Base	1
13	222030	Rivet.....	4
14	335991	Cover	1
15	1328205	Label (Operator Manual).....	1
16	1359588	Label (Operator Restraint)	2
17	1363916	Plug (Without Headlight).....	10
18	369573	Label (Lift/Tilt).....	1
19	1339828	Label (No Riders)	2
20	1343289	Label (Battery Restraint).....	1
21	1339832	Label (Pinch Point)	2
22	1342699	Label (Battery Spacer).....	1
23	1350577	Label (Hyster) (Horizontal)	2
24	1539387	Label (ACX)	1
25	1467511	Label (Freezer)	2
26	1467512	Label (Corrosion).....	2
27	1462415	Pad	1
28	1302483	Label (Model 5.50).....	2
28	369873	Label (Model 3.50).....	2
28	369874	Label (Model 4.00).....	2
28	370303	Label (Model 4.50).....	2
29	320037	Label (Patent Plate)	1
30	1342698	Label (Battery Disconnect)	1
31	370258	Label (Auxiliary Function - Side-Shift)	AR
31	370259	Label (Auxiliary Function - Fork Spreader)	AR
32	1385099	Label (Hydraulic Oil Fill) (EEC).....	1
35	1363918	Plug (Without Headlight).....	2

SEMI SUSPENSION SEAT (Figure 1-5) WITH ARM REST



BP120031

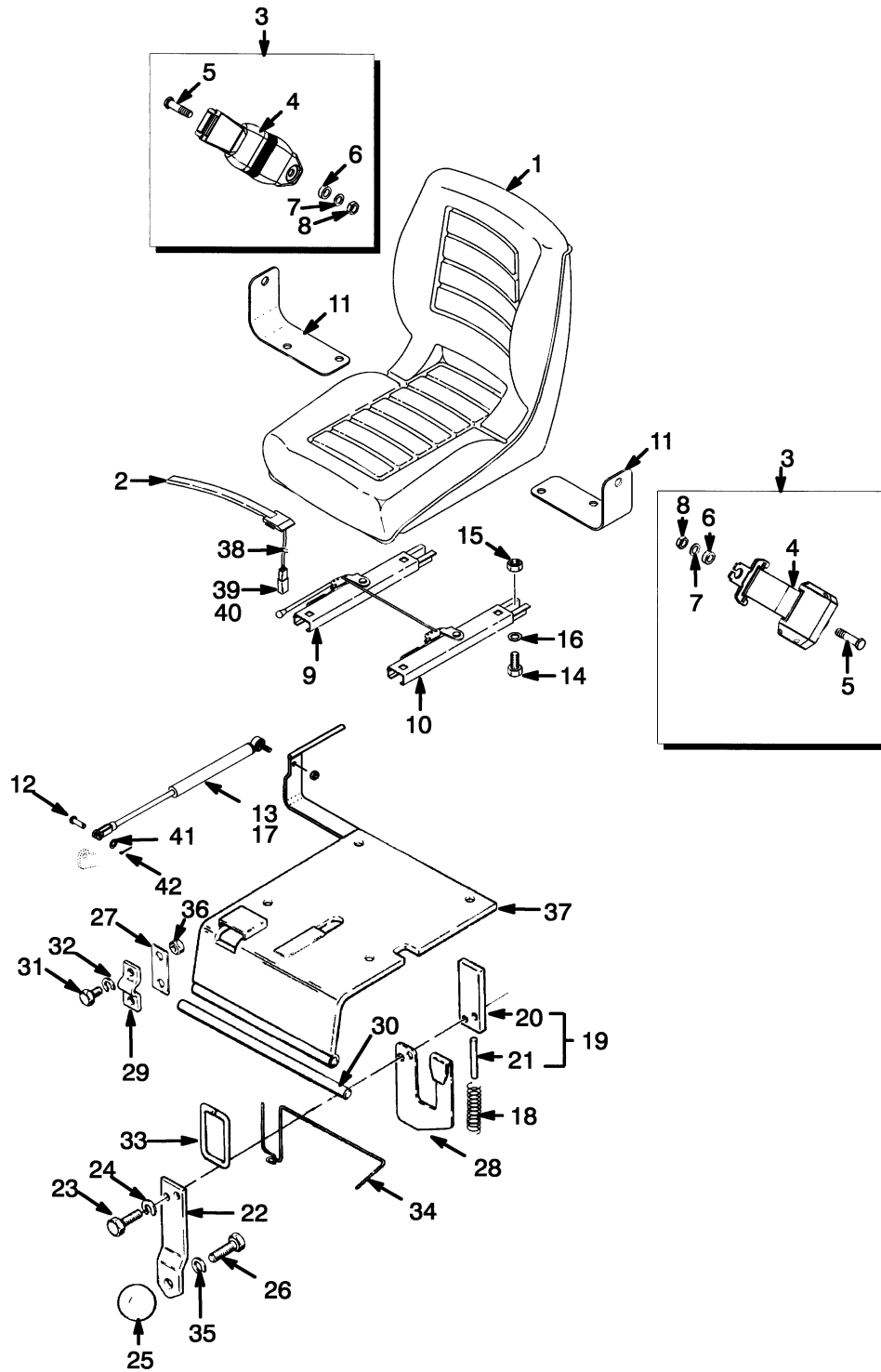
**SEMI SUSPENSION SEAT
WITH ARM REST**

ITEM	PART NO.	DESCRIPTION	QTY
	2051298	Semi-Suspension Seat	1
1	1480403	Back Cushion	1
2	1480404	Seat Cushion (With Switch).....	1
3	a 1480405	Slider Kit	1
4	1461081	Seat Belt Kit.....	1
5	335989	Tube.....	1
6	335991	Cover	1
7	1492278	Armrest Kit	1
	a 893818	Ground Wire	1

FOOTNOTES:

a Not Illustrated

NON SUSPENSION SEAT (Figure 1-6)

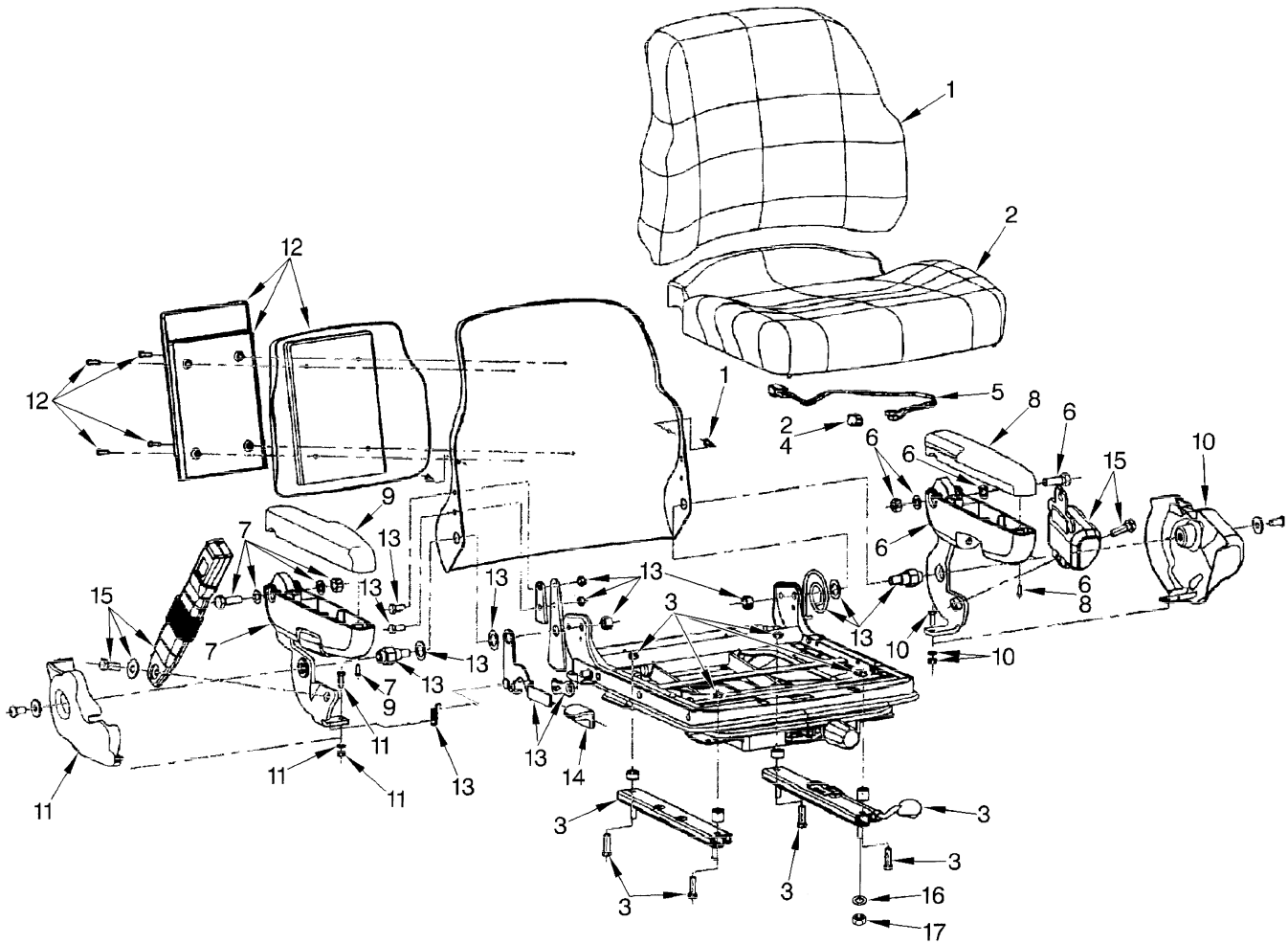


HP120187

NON SUSPENSION SEAT

ITEM	PART NO.	DESCRIPTION	QTY
	1460231	Non-Suspension Seat.....	1
1	364911	Seat.....	1
2	2037311	Switch Assembly	1
3	1461081	Seat Belt Kit.....	1
4	Seat Belt	1
5	Screw	2
6	Washer.....	2
7	Washer.....	2
8	Nut	2
9	1470176	Seat Rail (RH)	1
10	1470177	Seat Rail (LH).....	1
11	1470175	Bracket	1
12	139	Rod End Pin	1
13	251099	Adhesive	AR
14	18897	Capscrew.....	4
15	222665	Nut	4
16	18515	Washer	4
17	865371	Gas Spring.....	1
18	359849	Spring	1
19	1461896	Latch	1
20	1461888	Plate	1
21	302428	Pin	1
22	325592	Plate	1
23	287817	Capscrew.....	2
24	292680	Lockwasher.....	2
25	190481	Knob	1
26	16372	Capscrew.....	1
27	325616	Spacer	AR
28	362004	Spring Latch	1
29	355374	Clamp	2
30	360730	Bar	1
31	287860	Capscrew.....	4
32	292682	Lockwasher.....	4
33	362005	Rod (Formed)	1
34	355336	Spring	1
35	15156	Lockwasher.....	1
36	136692	Nut	4
37	1528835	Plate	1
38	2076863	Wire Harness.....	1
39	1330409	Connector.....	1
40	1330414	Secondary Lock.....	1
40	1330434	Terminal.....	2
40	1330437	Terminal (Pin)	2
41	18515	Washer	1
42	15212	Cotter Pin.....	1
	1461081	Seat Belt Kit (Includes Items 4-8)	1

FULL SUSPENSION SEAT (Figure 1-7) SHEET 1 OF 2

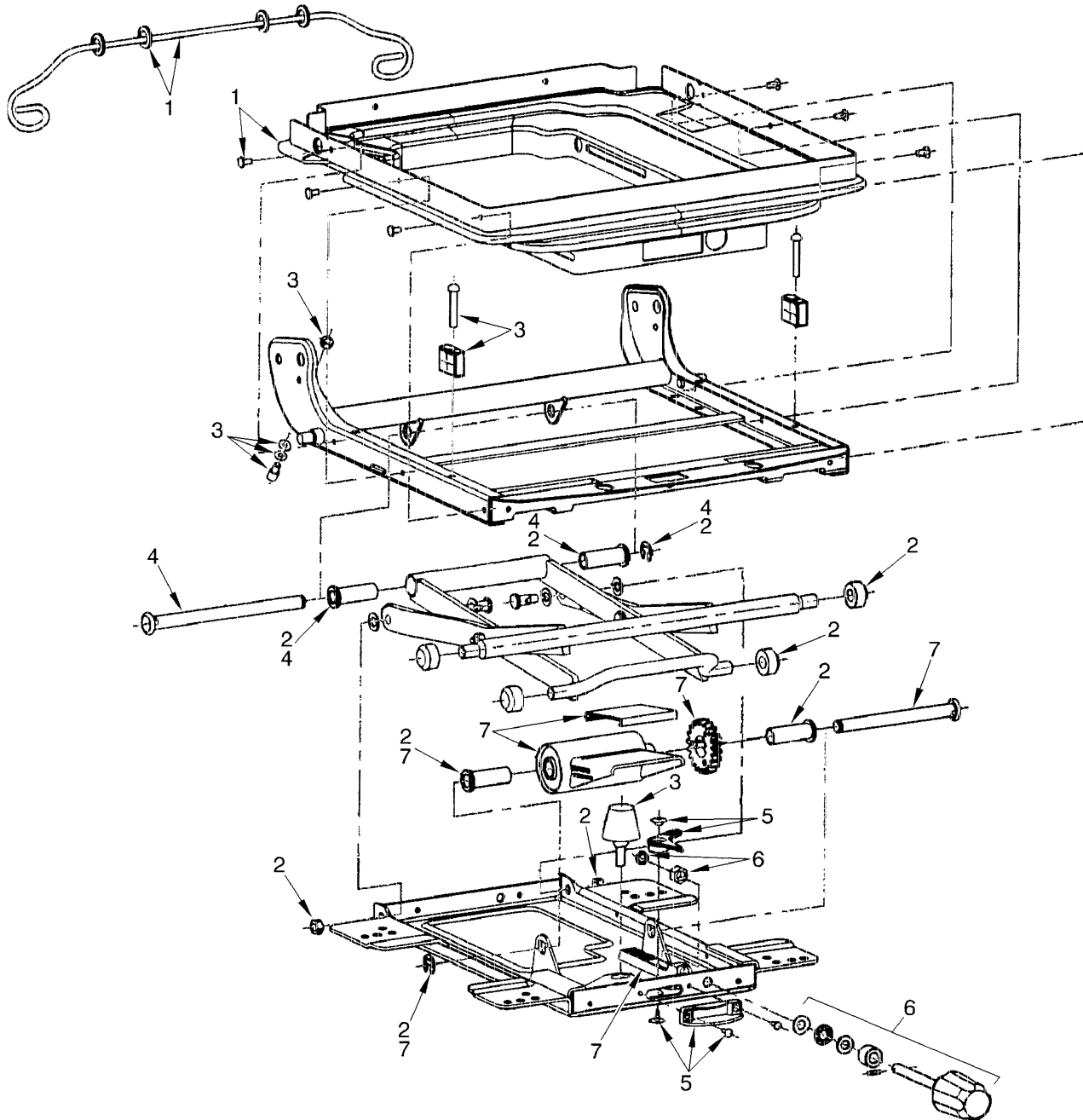


YP260317

**FULL SUSPENSION SEAT
SHEET 1 OF 2**

ITEM	PART NO.	DESCRIPTION	QTY
	1466006	Full Suspension Seat.....	1
1	1467533	Back Cushion (Vinyl).....	1
2	1494076	Seat Cushion (Vinyl).....	1
3	1467513	Slider Kit.....	1
4	1467514	Switch (Seat).....	1
5	1467515	Wire Harness.....	1
6	1467516	Armrest (LH) (LH).....	1
7	1467517	Armrest (RH) (RH).....	1
8	1467518	Cap (LH).....	1
9	1467519	Cap (RH).....	1
10	1467520	Cover (LH).....	1
11	1467521	Cover (RH).....	1
12	1467522	Holder Kit.....	1
13	1467530	Recliner Kit.....	1
14	1467531	Recliner Knob.....	1
15	1467532	Seat Belt Kit.....	1
16	15175	Washer.....	4
17	145639	Nut.....	4

FULL SUSPENSION SEAT (Figure 1-8) SHEET 2 OF 2

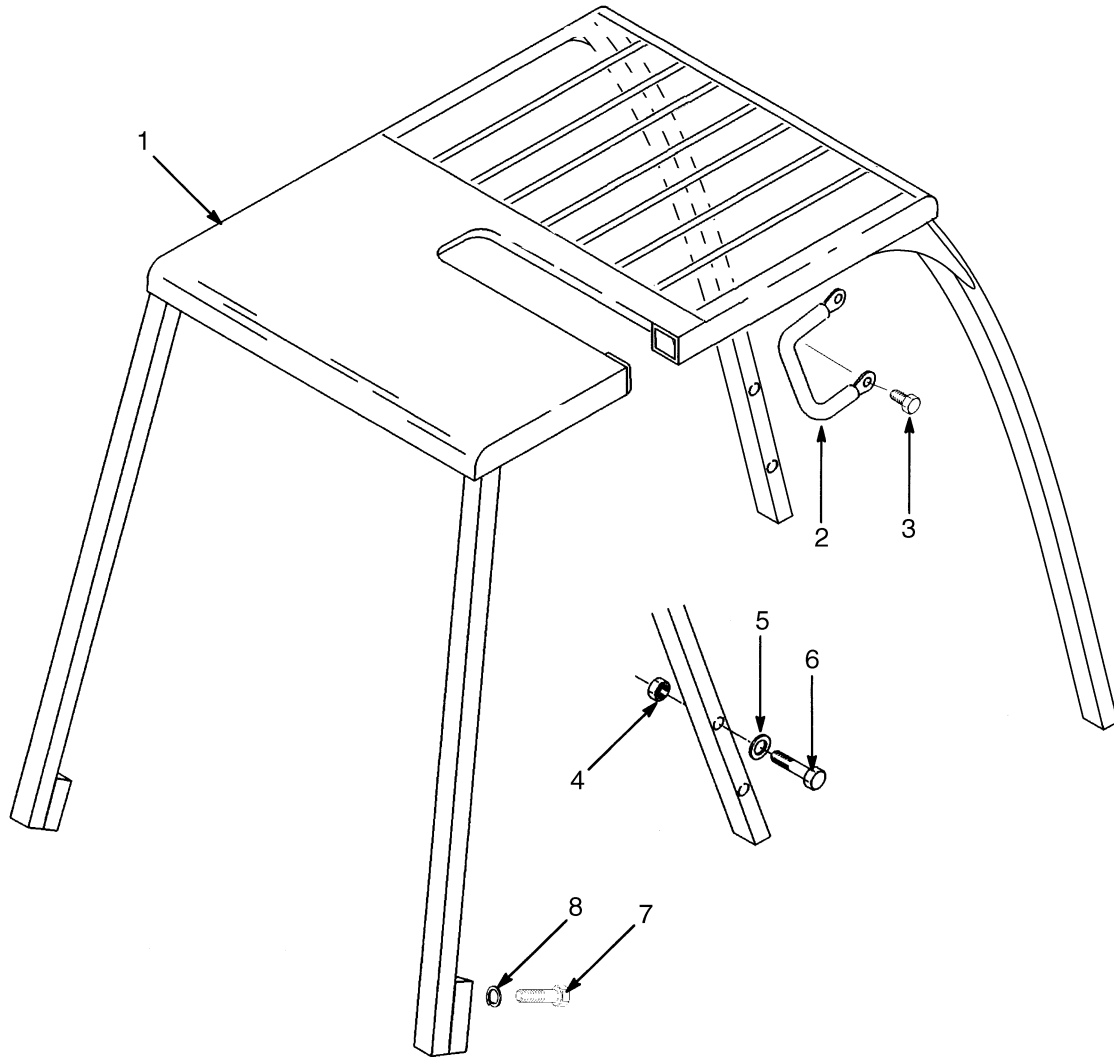


YP260318

**FULL SUSPENSION SEAT
SHEET 2 OF 2**

ITEM	PART NO.	DESCRIPTION	QTY
	1466006	Full Suspension Seat.....	1
1	1467523	Boot Kit.....	1
2	1467524	Roller and Bearing Kit	1
3	1467525	Bumper and Stop Kit	1
4	1467526	Bearing Shaft Kit	1
5	1467527	Weight Adjuster Indicator Kit	1
6	1467528	Knob Kit.....	1
7	1467529	Suspension Spring Kit.....	1

OVERHEAD GUARD (Figure 1-9) WITH CURVED LEG



BP120098

**OVERHEAD GUARD
WITH CURVED LEG**

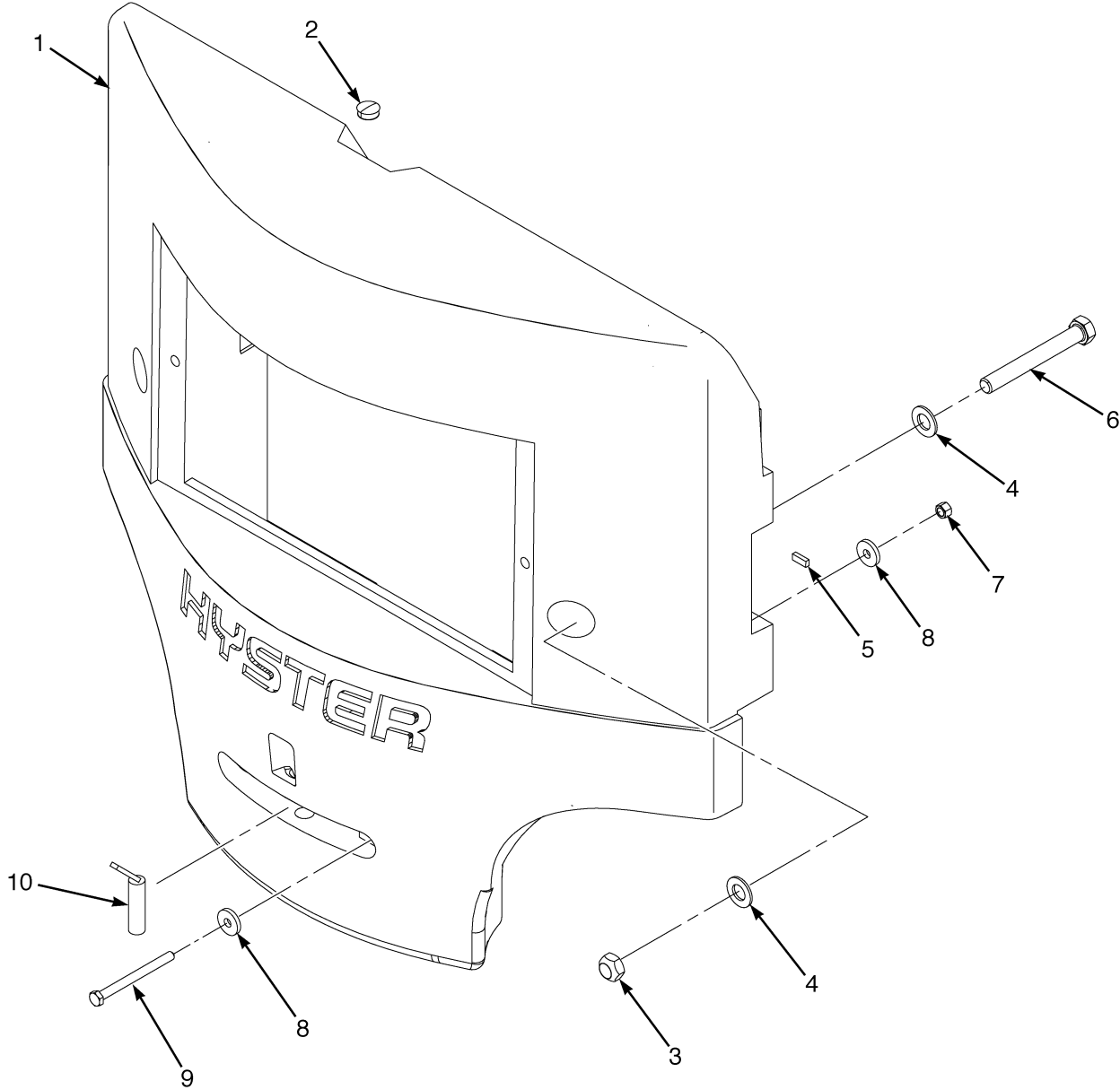
KEY:

A: E3.50-4.00XL, E4.50XLS

B: E4.50-5.50XL

ITEM	PART NO.	DESCRIPTION	QTY	
			A	B
1	1569574	Overhead Guard	1	..
1	1569575	Overhead Guard	1
2	1536813	Handle (Grab).....	1	1
3	329067	Screw.....	2	2
4	221355	Nut	4	4
5	15135	Washer	8	8
6	221585	Capscrew.....	4	4
7	293646	Capscrew.....	4	4
8	292683	Lockwasher.....	4	4

COUNTERWEIGHT (Figure 1-10)



HP120822



Suggest:

For more complete manuals. Please go to the home page.

<https://www.ebooklibonline.com>

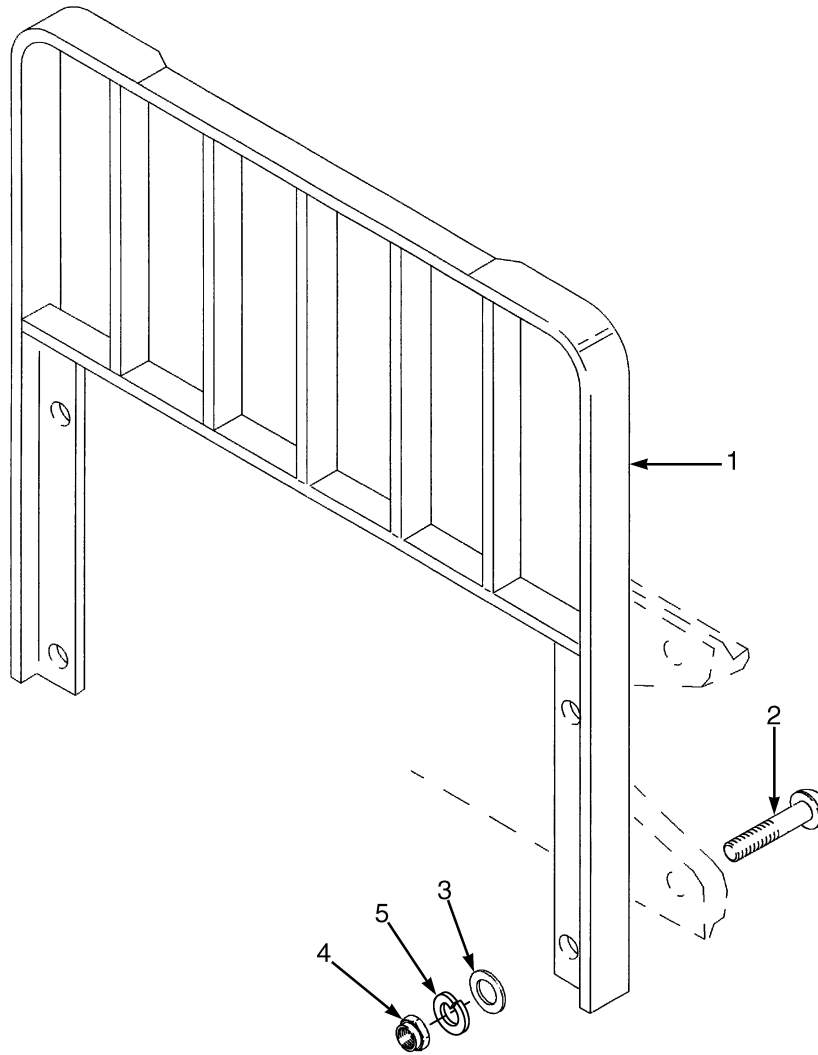
If the above button click is invalid. Please download this document first, and then click the above link to download the complete manual.

Thank you so much for reading

COUNTERWEIGHT**KEY:****A: E3.50XL****B: E4.00XL, E4.50XLS****C: E4.50XL, E5.50XL**

ITEM	PART NO.	DESCRIPTION	QTY		
			A	B	C
1	1561127	Counterweight	1
1	1561128	Counterweight	1	..
1	1561129	Counterweight	1
2	375479	Plug	1	1	1
3	221359	Nut	2	2	2
4	221779	Washer	4	4	4
5	326003	Tape	AR	AR	AR
6	1388511	Capscrew	2	2	2
7	300937	Locknut	2	2	2
8	300932	Washer	4	4	4
9	287814	Capscrew	2	2	2
10	326347	Tow Pin	1	1	1

LOAD BACKREST EXTENSIONS (Figure 1-11)



BP290015

<https://www.ebooklibonline.com>

Hello dear friend!

Thank you very much for reading.

Enter the link into your browser.

The full manual is available for immediate download.

<https://www.ebooklibonline.com>