

PARTS MANUAL

ELECTRIC

**E3.50-5.50XL, E4.50XLS
(C098)**

CUSTOMER EDITION

HYSTER

SECTIONS

1	FRAME
2	ELECTRICAL SYSTEM
3	DRIVE UNIT
4	STEERING SYSTEM
5	BRAKE/ACCELERATOR SYSTEM
6	HYDRAULIC SYSTEM
7	MAST-TWO STAGE LIMITED FREE-LIFT
8	MAST-THREE STAGE FULL FREE-LIFT
9	MAST-TWO STAGE FULL FREE-LIFT
10	OPTIONS
11	NUMERICAL INDEX

TABLE OF CONTENTS

DESCRIPTION	PAGE
A	
ACCELERATOR LINKAGE	5-20
ACCELERATOR PEDAL	
MONOTROL	5-22
ACCUMULATOR	10-48
B	
BACK-UP ALARM	10-6
BRAKE AND BACK-UP LIGHTS	
12 VOLT	10-4
BRAKE ASSEMBLY	5-6
BRAKE LINKAGE	5-2
C	
CARRIAGE	
THREE STAGE FULL FREE-LIFT	
⇒D/B 09/2002	8-56
E4.50XL ATTACHMENT	
⇒D/B 09/2002	8-60
TWO STAGE FULL FREE-LIFT	
⇒D/B 09/2002	9-46
E4.50XLS	
⇒D/B 09/2002	9-50
TWO STAGE LIMITED FREE-LIFT	
⇒D/B 09/2002	7-36
CARRIAGE ASSEMBLY	
THREE STAGE FULL FREE-LIFT	
⇒D/B 09/2002	8-58
TWO STAGE FULL FREE-LIFT	
D/B 09/2002⇒	9-48
TWO STAGE LIMITED FREE-LIFT	
D/B 09/2002⇒	7-38
CONTACTOR	
LINE	2-24
POWER STEERING ON-DEMAND	2-22
PUMP AND 1A	2-26
CONTACTOR PANEL	
CONTACTOR HOIST	2-21
TRANSISTOR HOIST	2-20
CONTROL PANEL	
CONTACTOR HYDRAULIC	
DUAL PUMPS	2-18
SINGLE PUMP	2-16
TRANSISTOR HYDRAULIC	2-14
COUNTERWEIGHT	1-18
D	
DRIVE AXLE	3-2
DRIVE LIGHTS	
12 VOLT	10-2
DRIVE TIRE AND WHEEL	

<https://www.ebooklibonline.com>

Hello dear friend!

Thank you very much for reading.

Enter the link into your browser.

The full manual is available for immediate download.

<https://www.ebooklibonline.com>

TABLE OF CONTENTS (Continued)

DESCRIPTION	PAGE
D (continued)	
POLYURETHANE	10-12
DRIVE WHEELS AND TIRES	10-10
E	
ELECTRICAL	
CONTACTOR HYDRAULIC	
DUAL PUMPS	2-10
SINGLE PUMP	2-6
TRANSISTOR HYDRAULIC	2-2
F	
FLOOR PLATES AND COVERS	1-10
FORK	
HOOK TYPE	1-26
HOOK TYPE OPTIONAL	1-28
FREE-LIFT	
THREE STAGE FULL FREE-LIFT	
D/B 09/2002⇒	8-28
⇒D/B 09/2002	8-24
TWO STAGE FULL FREE-LIFT	
⇒D/B 09/2002	9-18
FREE-LIFT CYLINDER	
THREE STAGE FULL FREE-LIFT	
D/B 09/2002⇒	8-44
⇒D/B 09/2002	8-40
TWO STAGE FULL FREE-LIFT	
D/B 09/2002⇒	9-34
⇒D/B 09/2002	9-30
H	
HEADER HOSE	
THREE STAGE FULL FREE-LIFT	
D/B 09/2002⇒	8-52
⇒D/B 09/2002	8-48
TWO STAGE FULL FREE-LIFT	
8° BACK TILT	
⇒D/B 09/2002	10-52
D/B 09/2002⇒	9-42
⇒D/B 09/2002	9-38
TWO STAGE LIMITED FREE-LIFT	
8° BACK TILT	
D/B 09/2002⇒	10-50
D/B 09/2002⇒	7-32
⇒D/B 09/2002	7-28
HOOD	1-14
HYDRAULIC CONTROL	
HAND LEVERS	6-26
HYDRAULIC FILTER	6-22
HYDRAULIC LINKAGE	

TABLE OF CONTENTS (Continued)

DESCRIPTION	PAGE
H (continued)	
CONTROL VALVE	6-24
HYDRAULIC MOTOR	
OPEN CONSTRUCTION WITHOUT BWI AND TEMP SENSOR	
S/N C098N-01676Y⇒	6-14
S/N C098N-01676Y⇒	6-20
SHEET 1 OF 2	
⇒S/N C098N-01675Y	6-16
SHEET 2 OF 2	
⇒S/N C098N-01675Y	6-18
HYDRAULIC PUMP	6-10
OPTIONAL	6-12
HYDRAULIC VALVE	
FIVE FUNCTION	6-40
FOUR FUNCTION	6-36
THREE FUNCTION	6-32
TWO FUNCTION	6-30
HYDRAULICS	
E3.50-4.00XL, E4.50XLS	
SINGLE PUMP AND MOTOR	6-2
E3.50-5.50XL	
DUAL PUMPS AND MOTORS	6-6
I	
INNER MAST	
THREE STAGE FULL FREE-LIFT	
D/B 09/2002⇒	8-14
⇒D/B 09/2002	8-12
TWO STAGE FULL FREE-LIFT	
⇒D/B 09/2002	9-8
TWO STAGE LIMITED FREE-LIFT	
D/B 09/2002⇒	7-8
⇒D/B 09/2002	7-6
INNER MAST AND FREE-LIFT	
TWO STAGE FULL FREE-LIFT	
D/B 09/2002⇒	9-10
INTEGRAL SIDE-SHIFT	
1219 MM (48 IN.) CLASS IV	
TWO STAGE LIMITED FREE-LIFT	10-24
THREE STAGE FULL FREE-LIFT	
E3.5-4.00XL, E4.50XLS	10-26
E4.50-5.50XL	10-34
TWO STAGE FULL FREE-LIFT	
E3.5-4.00XL, E4.50XLS	10-36
E4.50-5.50XL	10-42
TWO STAGE LIMITED FREE-LIFT	
E3.5-4.00XL, E4.50XLS	10-16
E4.50-5.50XL	10-18
INTEGRAL SIDE-SHIFT CARRIAGE	
1067 MM (42 IN.) CLASS III	

TABLE OF CONTENTS (Continued)

DESCRIPTION	PAGE
I (continued)	
THREE STAGE FULL FREE-LIFT	10-28
TWO STAGE FULL FREE-LIFT	10-38
TWO STAGE LIMITED FREE-LIFT	10-20
1219 MM (48 IN.) CLASS III	
TWO STAGE FULL FREE-LIFT	10-40
TWO STAGE LIMITED FREE-LIFT	10-22
1219 MM (48 IN.) CLASS III (E3.50-4.0 XL, E4.50XLS)	
THREE STAGE FULL FREE-LIFT	10-30
1219 MM (48 IN.) CLASS III (E4.50-5.50XL)	
THREE STAGE FULL FREE-LIFT	10-32
1219 MM (48 IN.) CLASS IV	
TWO STAGE FULL FREE-LIFT	10-44
INTERMEDIATE MAST	
THREE STAGE FULL FREE-LIFT	
D/B 09/2002⇒	8-10
⇒D/B 09/2002	8-8
L	
LABELS	1-21
LOAD BACKREST EXTENSION	1-24
M	
MAIN CYLINDER	
TWO STAGE LIMITED FREE-LIFT	
E3.50-4.00XL, E4.50XLS	
D/B 09/2002⇒	7-22
⇒D/B 09/2002	7-18
E4.50-5.50XL	
D/B 09/2002⇒	7-26
⇒D/B 09/2002	7-24
MAIN LIFT	
THREE STAGE FULL FREE-LIFT	
D/B 09/2002⇒	8-20
⇒D/B 09/2002	8-16
TWO STAGE FULL FREE-LIFT	
⇒D/B 09/2002	9-14
TWO STAGE LIMITED FREE-LIFT	
D/B 09/2002⇒	7-14
⇒D/B 09/2002	7-10
MAIN LIFT CYLINDER	
THREE STAGE FULL FREE-LIFT	
D/B 09/2002⇒	8-36
⇒D/B 09/2002	8-32
TWO STAGE FULL FREE-LIFT	
D/B 09/2002⇒	9-26
⇒D/B 09/2002	9-22
MAST INSTALLATION	6-48
MASTER CYLINDER	5-5

TABLE OF CONTENTS (Continued)

DESCRIPTION	PAGE
N	
NON-SUSPENSION SEAT SEARS.....	1-8
O	
OUTER MAST THREE STAGE FULL FREE-LIFT D/B 09/2002⇒.....	8-6
⇒D/B 09/2002.....	8-2
TWO STAGE FULL FREE-LIFT ⇒D/B 09/2002.....	9-2
TWO STAGE LIMITED FREE-LIFT D/B 09/2002⇒.....	7-4
⇒D/B 09/2002.....	7-2
OUTER MAST AND MAIN LIFT TWO STAGE FULL FREE-LIFT D/B 09/2002⇒.....	9-4
OVERHEAD GUARD.....	1-16
P	
PARK BRAKE.....	5-10
PARK BRAKE LINKAGE WITH SEAT BRAKE.....	5-12
S	
SEAT BRAKE 280 MM MOTOR.....	5-16
330 MM MOTOR.....	5-18
SEMI SUSPENSION SEAT WITH ARM REST.....	1-6
SEMI-SUSPENSION SEAT SEARS.....	1-2
SIDE-SHIFT CARRIAGE E3.50-4.00XL, E4.50XLS.....	10-14
SIDE-SHIFT CYLINDER.....	10-46
STEER WHEEL TIRE AND WHEEL.....	10-8
STEERING AXLE.....	4-12
STEERING COLUMN D/B 05/2002⇒.....	4-6
⇒D/B 05/2002.....	4-2
STEERING CONTROL UNIT ⇒D/B 02/2000.....	4-16
D/B 02/2000⇔D/B 05/2002.....	4-18
D/B 05/2002⇒.....	4-20
STEERING CYLINDER.....	4-22
STEERING LINES.....	4-10
STEERING MOTOR ⇒S/N C098N-02667A.....	4-26
S/N C098N-02668A⇒.....	4-28
STEERING PUMP.....	4-24

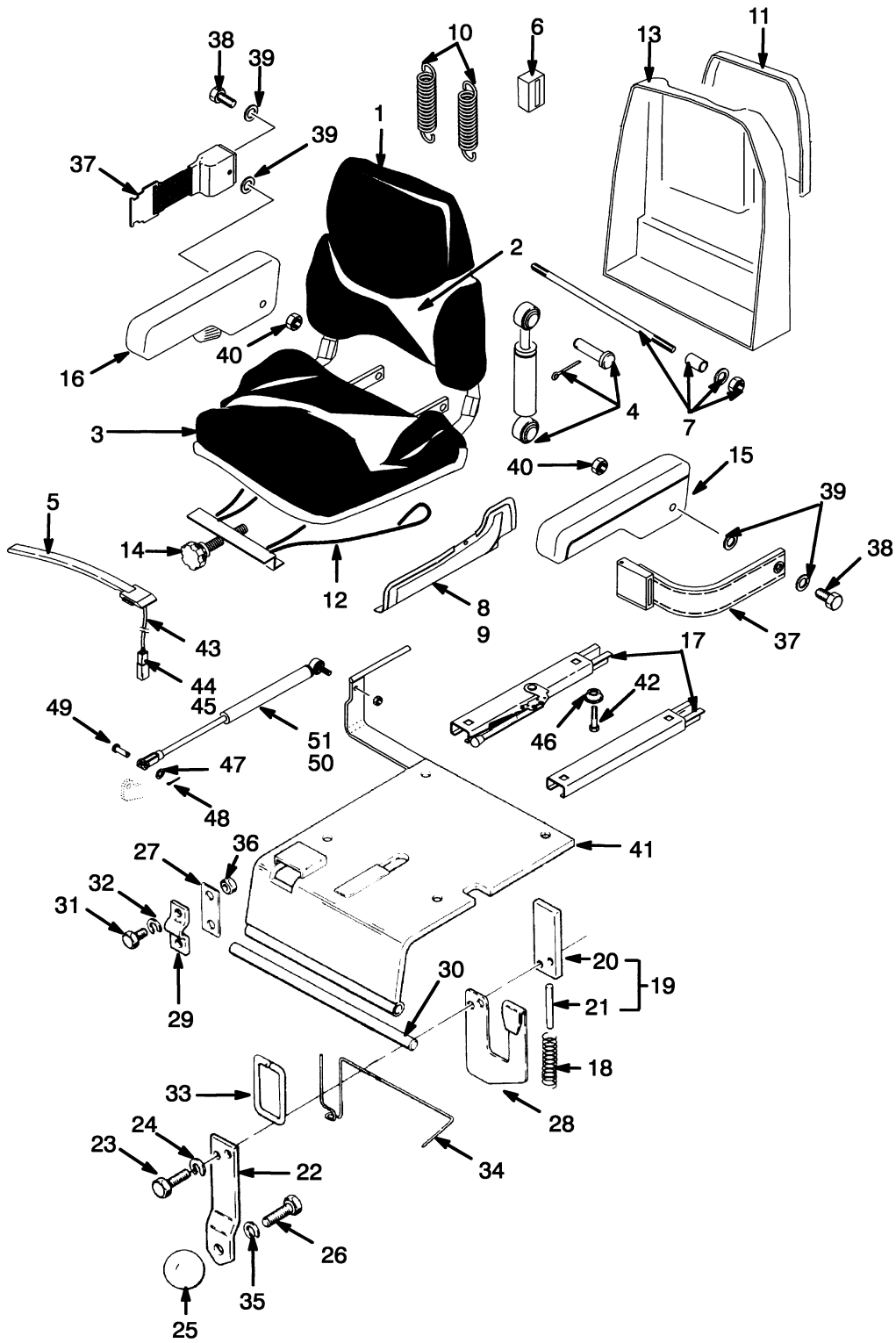
TABLE OF CONTENTS (Continued)

DESCRIPTION	PAGE
T	
TILT CYLINDER	
⇒S/N C098N-02199Z.....	6-44
S/N C098N-02200Z⇒.....	6-46
TRACTION MOTOR	
280 MM DIAMETER	
E3.50-4.00XL, E4.50XLS	3-10
330 MM DIAMETER	
E3.50-5.50XL	
S/N C098N01501Y⇒, S/N C098V06229X⇒.....	3-14
E3.50-5.50XL	
⇒S/N C098V06228X	3-12
TRANSMISSION	3-6
W	
WIRE HARNESS	
MAIN.....	2-28

SECTION 1
FRAME

DESCRIPTION	PAGE
COUNTERWEIGHT	1-18
FLOOR PLATES AND COVERS	1-10
FORK	
HOOK TYPE	1-26
HOOK TYPE OPTIONAL	1-28
HOOD	1-14
LABELS	1-21
LOAD BACKREST EXTENSION	1-24
NON-SUSPENSION SEAT	
SEARS	1-8
OVERHEAD GUARD	1-16
SEMI SUSPENSION SEAT	
WITH ARM REST	1-6
SEMI-SUSPENSION SEAT	
SEARS	1-2

SEMI-SUSPENSION SEAT (Figure 1-1) SEARS



YP120186

**SEMI-SUSPENSION SEAT
SEARS****KEY:****A: Fabric Seat****B: Vinyl Seat**

ITEM	PART NO.	DESCRIPTION	QTY	
			A	B
1	1450209	Semi-Suspension Seat	1
1	1450210	Semi-Suspension Seat	1	..
2	1382111	Back Cushion	1
2	1382113	Back Cushion	1	..
3	1382112	Seat Cushion.....	..	1
3	1382114	Seat Cushion.....	1	..
4	1362049	Shock Absorber Kit.....	1	1
5	1354140	Switch Assembly	1	1
6	1362052	Block.....	1	1
7	1362053	Shaft and Bearing Kit	1	1
8	1453885	Cover (RH)	1	1
9	1453884	Cover (LH)	1	1
10	1367137	Suspension Spring Kit.....	1	1
11	1453887	Holder.....	1	1
12	1378307	Suspension Cable Kit.....	1	1
13	1453886	Cover (Rear).....	1	1
14	1362061	Knob Kit.....	1	1
15	1453882	Armrest (LH).....	1	1
16	1453883	Armrest (RH)	1	1
17	1459114	Seat Rail Kit.....	1	1
18	359849	Spring	1	1
19	1461896	Latch	1	1
20	1461888	Plate	1	1
21	302428	Pin	1	1
22	325592	Plate	1	1
23	287817	Capscrew.....	2	2
24	292680	Lockwasher.....	2	2
25	190481	Knob	1	1
26	16372	Capscrew.....	1	1
27	325616	Spacer	AR	AR
28	362004	Spring Latch	1	1
29	355374	Clamp	2	2
30	360730	Bar	1	1
31	287860	Capscrew.....	4	4
32	292682	Lockwasher.....	4	4
33	362005	Rod	1	1
34	355336	Spring	1	1
35	15156	Lockwasher.....	1	1
36	136692	Nut	4	4
37	Seat Belt.....	1	1
38	Bolt	2	2
39	Washer	4	4
40	Nut	2	2
41	a 1463968	Plate	1	1
41	b 1528835	Plate	1	1
42	220146	Capscrew.....	4	4

SEMI-SUSPENSION SEAT SEARS

ITEM	PART NO.	DESCRIPTION	QTY	
			A	B
43	1459215	Wire Harness.....	1	1
44	1330409	Connector.....	1	1
45	1330414	Secondary Lock.....	1	1
46	204114	Spacer.....	4	4
47	18515	Washer.....	1	1
48	15212	Cotter Pin.....	1	1
49	139	Rod End Pin.....	1	1
50	251099	Adhesive.....	AR	AR
51	865371	Gas Spring.....	1	1
	1461081	Seat Belt Kit (Includes Items 37-40).....	1	1

FOOTNOTES:**a** ⇒ D/B 06/2002**b** D/B 06/2002 ⇒

**SEMI SUSPENSION SEAT
WITH ARM REST**

ITEM	PART NO.	DESCRIPTION	QTY
	2041645	Semi-Suspension Seat	1
1	1480403	Back Cushion	1
2	1480404	Seat Cushion (With Switch).....	1
3	a 1480405	Slider Kit	1
4	1461081	Seat Belt Kit.....	1
5	335989	Tube.....	1
6	335991	Cover	1
7	292681	Lockwasher.....	4
8	287851	Capscrew.....	4
9	1492119	Armrest (LH)	1
9	1492120	Armrest (RH)	1
	1492278	Armrest Kit (Includes Items 7-9).....	1

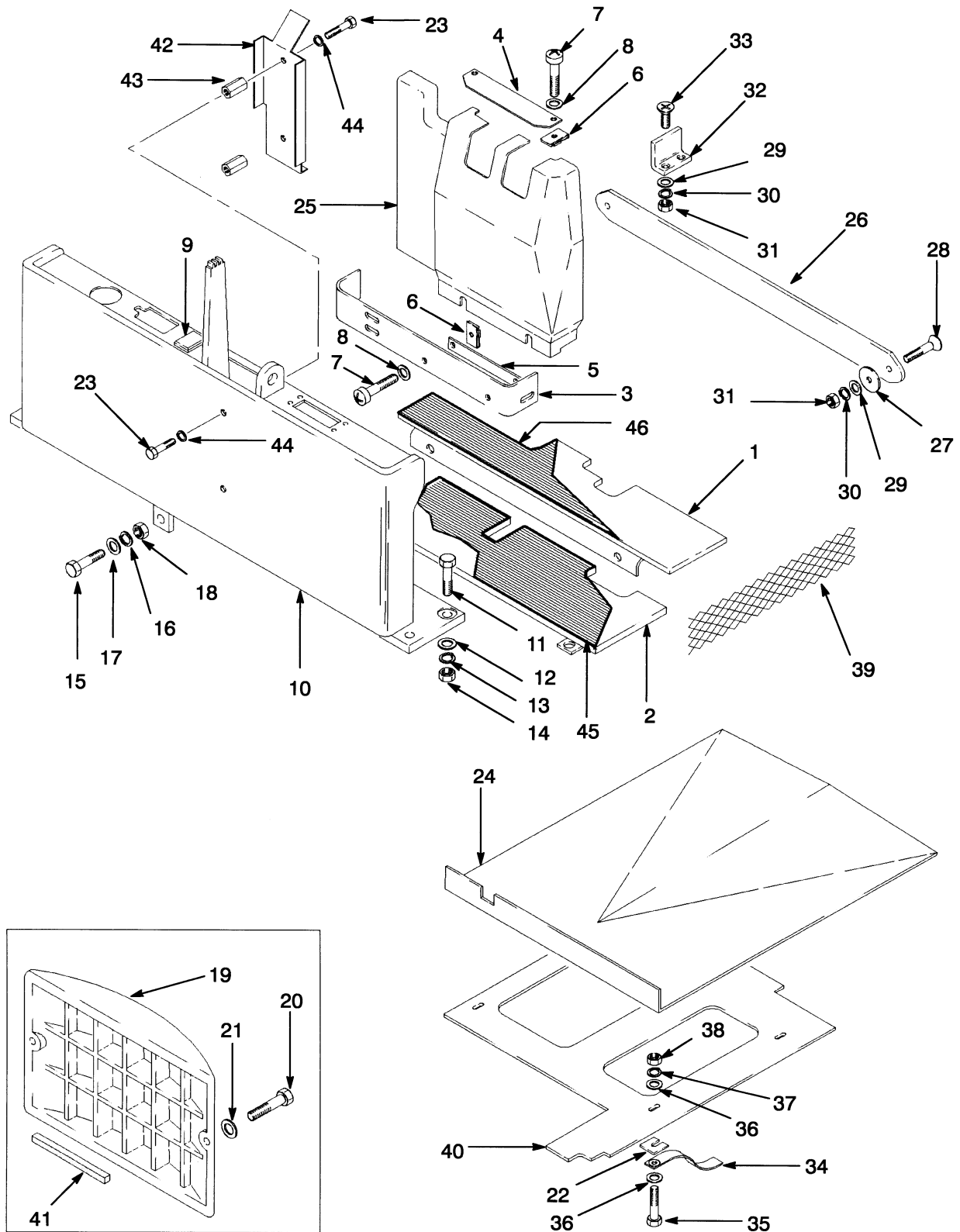
FOOTNOTES:**a** Not Illustrated

**NON-SUSPENSION SEAT
SEARS**

ITEM	PART NO.	DESCRIPTION	QTY
	1460231	Non-Suspension Seat.....	1
1	364911	Seat.....	1
2	2037311	Switch Assembly.....	1
3	1461081	Seat Belt Kit.....	1
4	Seat Belt.....	1
5	Screw.....	2
6	Washer.....	2
7	Washer.....	2
8	Nut.....	2
9	1470176	Seat Rail (RH).....	1
10	1470177	Seat Rail (LH).....	1
11	1470175	Bracket.....	1
12	139	Rod End Pin.....	1
13	251099	Adhesive.....	AR
14	18897	Capscrew.....	4
15	222665	Nut.....	4
16	18515	Washer.....	4
17	865371	Gas Spring.....	1
18	359849	Spring.....	1
19	1461896	Latch.....	1
20	1461888	Plate.....	1
21	302428	Pin.....	1
22	325592	Plate.....	1
23	287817	Capscrew.....	2
24	292680	Lockwasher.....	2
25	190481	Knob.....	1
26	16372	Capscrew.....	1
27	325616	Spacer.....	AR
28	362004	Spring Latch.....	1
29	355374	Clamp.....	2
30	360730	Bar.....	1
31	287860	Capscrew.....	4
32	292682	Lockwasher.....	4
33	362005	Rod (Formed).....	1
34	355336	Spring.....	1
35	15156	Lockwasher.....	1
36	136692	Nut.....	4
37	a 1463968	Plate.....	1
37	b 1528835	Plate.....	1
38	1459215	Wire Harness.....	1
39	1330409	Connector.....	1
40	1330414	Secondary Lock.....	1
41	18515	Washer.....	1
42	15212	Cotter Pin.....	1
	1461081	Seat Belt Kit (Includes Items 4-8).....	1

FOOTNOTES:**a** ⇒ D/B 06/2002**b** D/B 06/2002 ⇒

FLOOR PLATES AND COVERS (Figure 1-4)



HP120188

FLOOR PLATES AND COVERS

ITEM	PART NO.	DESCRIPTION	QTY
1	bd 1462416	Floorplate (Rear)	1
1	ad 1462417	Floorplate (Rear)	1
1	ac 1462418	Floorplate (Rear)	1
1	bc 2037419	Floorplate (Rear)	1
2	d 1462420	Floorplate (Front)	1
2	c 2037420	Floorplate (Front)	1
3	375159	Plate	1
4	375160	Plate	1
5	325096	Plate	1
6	1354323	Nut (Foldover)	6
7	302049	Screw	6
8	320156	Washer	6
9	374046	Plug	1
10	1465893	Cowl	1
11	221570	Capscrew	8
12	221771	Washer	8
13	15158	Lockwasher	8
14	221712	Nut	8
15	136985	Capscrew	1
16	292682	Lockwasher	1
17	320159	Washer	2
18	136692	Nut	1
19	375184	Cover	1
20	16828	Capscrew	2
21	221767	Washer	2
22	e 361998	Plate	4
23	18718	Capscrew	4
24	1462422	Cover (E3.50-4.00XL, E4.50XLS)	1
24	1462423	Cover (E4.50-5.50XL)	1
25	375161	Cover (Two, Three, and Four Function Valves)	1
25	375162	Cover (Five Function Valve)	1
26	375249	Plate	1
27	361973	Spacer	12
28	296248	Capscrew	2
29	296421	Washer	6
30	292682	Lockwasher	6
31	136692	Nut	6
32	375226	Spacer	2
33	296241	Capscrew	4
34	e 216895	Static Strap	2
35	e 176640	Capscrew	4
36	e 320158	Washer	8
37	e 292681	Lockwasher	2
37	e 296406	Washer	2
38	e 239503	Nut	4
39	e 1302491	Sheet	2
40	e 1302492	Plate	1
41	e 361988	Tape	AR
42	1330825	Cover	1
43	1328480	Standoff	2
44	15154	Lockwasher	4

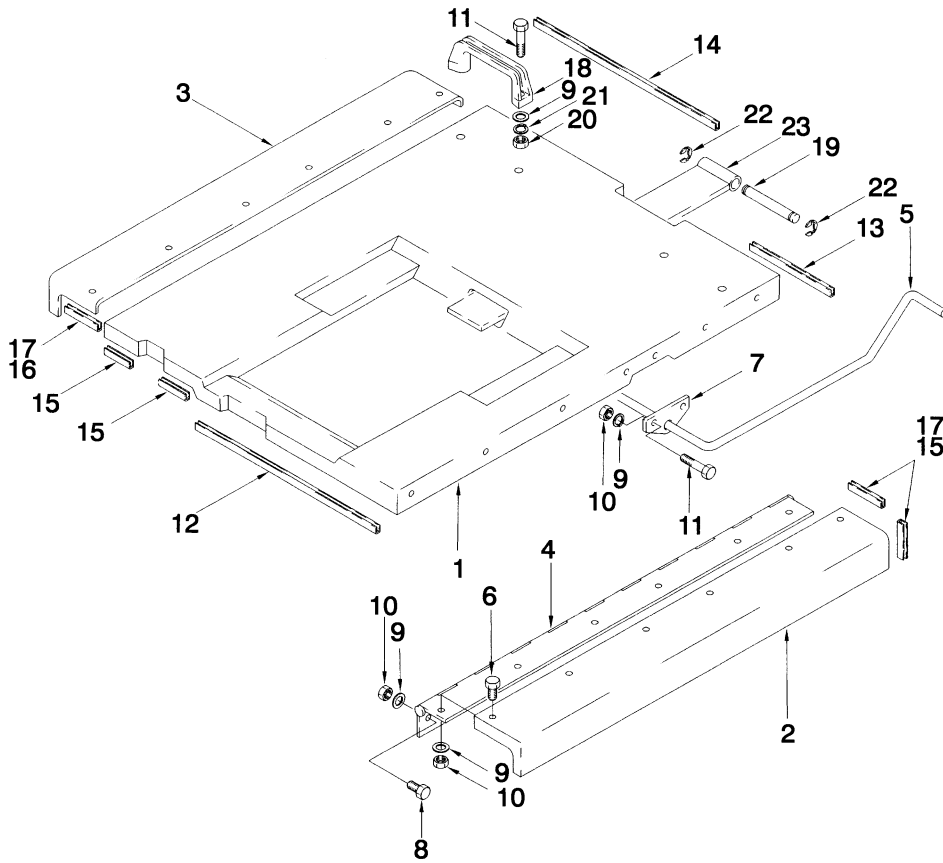
FLOOR PLATES AND COVERS

ITEM	PART NO.	DESCRIPTION	QTY
45	2037421	Floormat (Front).....	1
46	a 1462429	Floormat (Rear).....	1
46	b 2037422	Floormat (Rear).....	1

FOOTNOTES:

- a** "A" Position Battery Connector
- b** "B" Position Battery Connection
- c** Smooth
- d** Textured
- e** Type EE

HOOD (Figure 1-5)

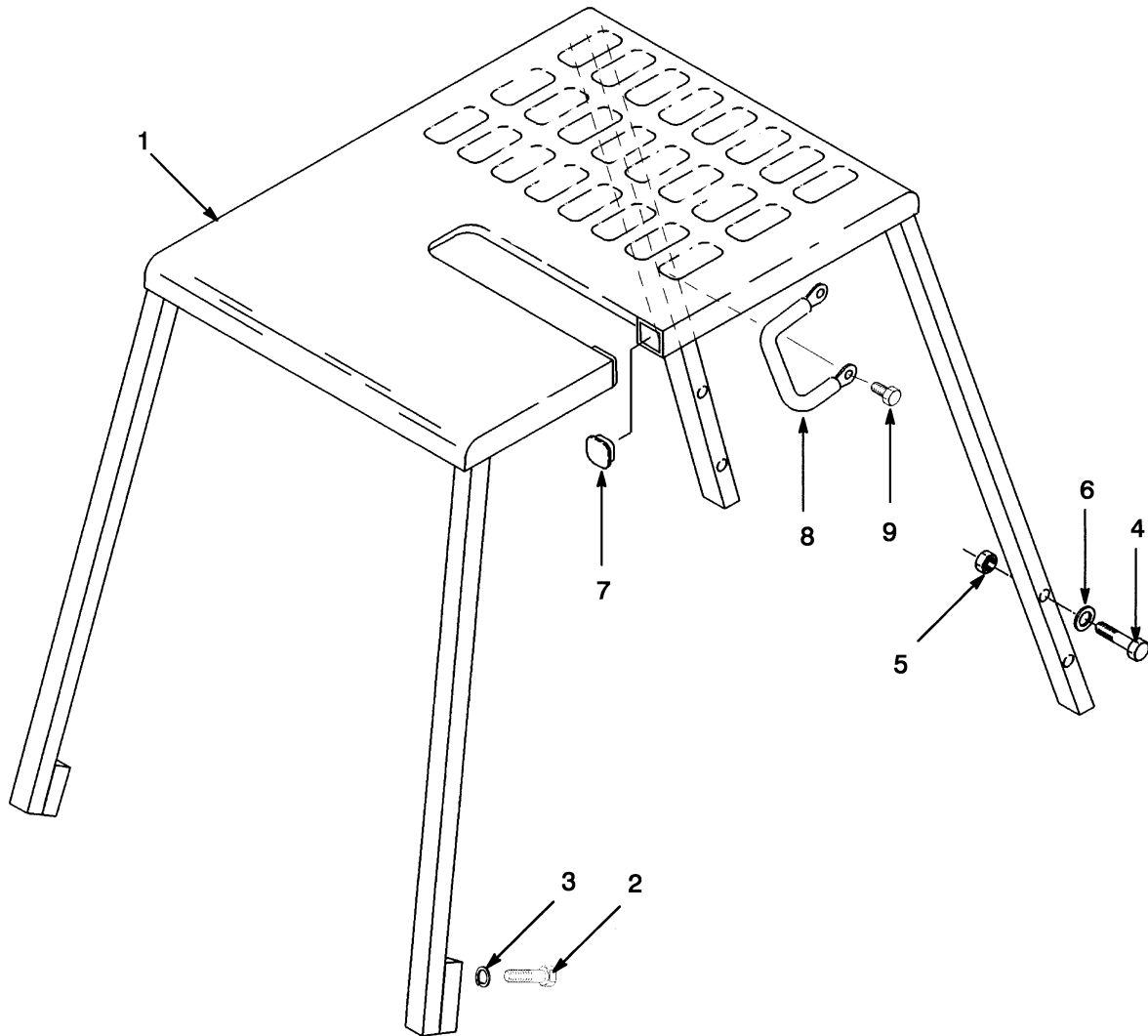


HP120189

HOOD**KEY:****A: E3.50-4.00XL, 4.50XLS****B: E4.50-5.50XL**

ITEM	PART NO.	DESCRIPTION	QTY	
			A	B
1	1461930	Hood	1	..
1	1461931	Hood	1
2	1462074	Hood (LH)	1	..
2	1462075	Hood (LH)	1
3	1462078	Hood (RH)	1	..
3	1462079	Hood (RH)	1
4	1462088	Hinge	2	..
4	1462089	Hinge	2
5	1302505	Hinge	1	1
6	296215	Capscrew.....	12	12
7	388768	Bracket.....	2	2
8	292500	Capscrew.....	10	10
9	320156	Washer	30	30
10	313805	Nut	26	26
11	287816	Capscrew.....	8	8
12	362031	Trim	1	1
13	375295	Trim	1	1
14	375296	Trim	1	1
15	325980	Trim	6	6
16	388752	Trim	2	2
17	362043	Adhesive	AR	AR
18	362030	Handle	2	2
19	1302519	Pin	1	1
20	136687	Nut	4	4
21	292680	Lockwasher.....	4	4
22	185118	E-Ring.....	2	2
23	1302506	Plate	1	..
23	1302507	Plate	1

OVERHEAD GUARD (Figure 1-6)



HP120190

OVERHEAD GUARD**KEY:****A: E3.50-4.00XL, E4.50XLS (Standard Height)****B: E4.50-5.50XL (Standard Height)****C: E3.50-4.00XL, E4.50XLS (Raised Height)****D: E4.50-5.50XL (Raised Height)**

ITEM	PART NO.	DESCRIPTION	QTY			
			A	B	C	D
1	1302512	Overhead Guard	1
1	1302513	Overhead Guard	1
1	1302514	Overhead Guard	1	..
1	1302515	Overhead Guard	1
1	b 1541237	Overhead Guard	1	..
1	a 1541240	Overhead Guard	1
2	293646	Capscrew	4	4	4	4
3	292683	Lockwasher	4	4	4	4
4	221581	Capscrew	4	4	4	4
5	221355	Nut	4	4	4	4
6	15135	Washer	8	8	8	8
7	329699	Plug	2	2	2	2
8	1343647	Handle	1	1	1	1
9	329067	Screw	2	2	2	2

FOOTNOTES:**a** Long Frame Grid Type**b** Short Frame Grid Type



Suggest:

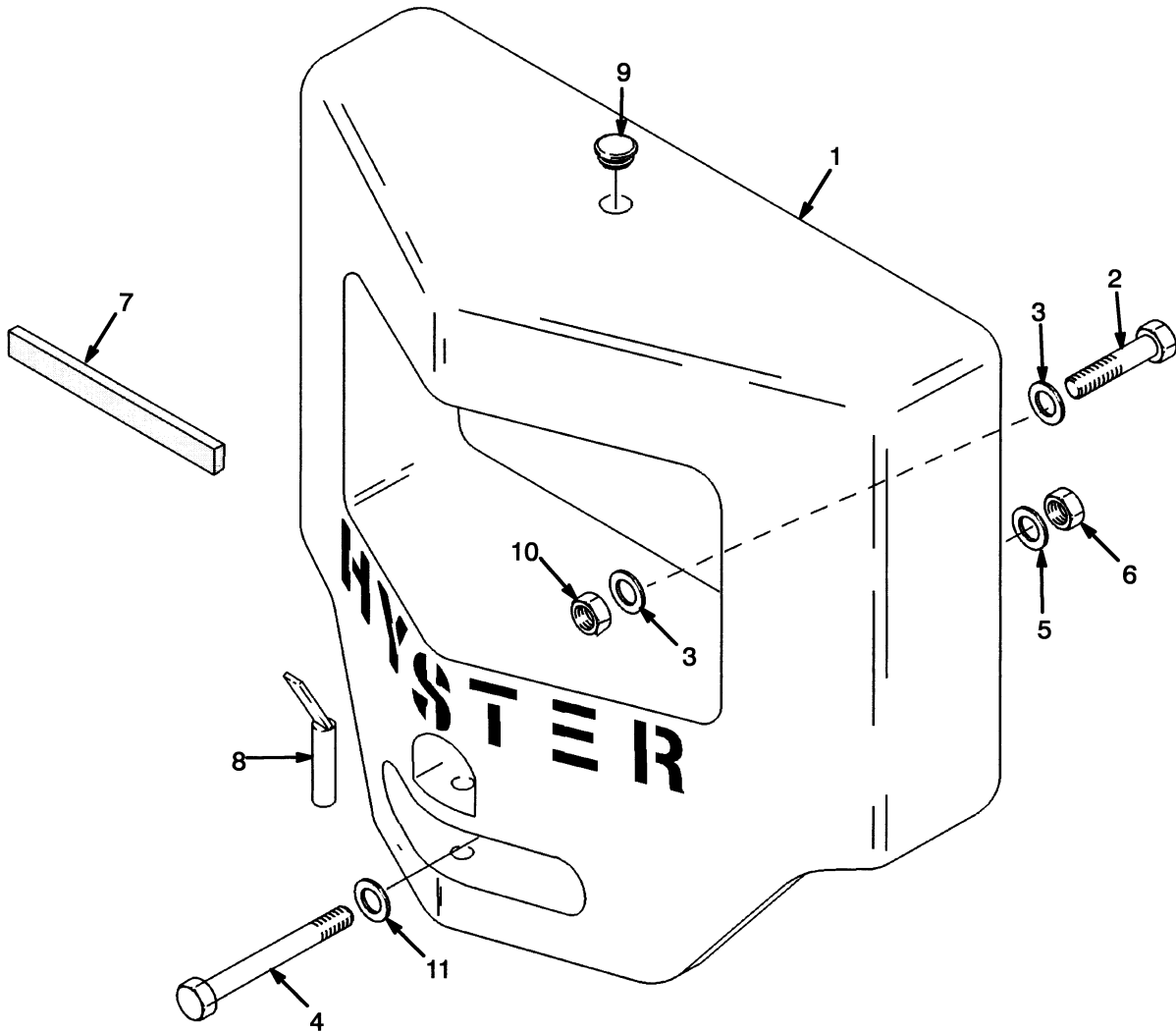
For more complete manuals. Please go to the home page.

<https://www.ebooklibonline.com>

If the above button click is invalid. Please download this document first, and then click the above link to download the complete manual.

Thank you so much for reading

COUNTERWEIGHT (Figure 1-7)



HP120191

COUNTERWEIGHT

ITEM	PART NO.	DESCRIPTION	QTY
1	a 375145	Counterweight (E4.50XLS, E5.50XL)	1
1	b 1519765	Counterweight (E4.50XLS, E5.50XL)	1
1	a 375146	Counterweight (E4.00XL, E4.50XL).....	1
1	b 1519764	Counterweight (E4.00XL, E4.50XL).....	1
1	a 375147	Counterweight (E3.50XL)	1
1	b 1519763	Counterweight (E3.50XL)	1
2	1388511	Capscrew.....	2
3	221779	Washer	4
4	287814	Capscrew.....	2
5	300932	Washer	2
6	300937	Locknut	2
7	326003	Tape.....	AR
8	326347	Tow Pin	1
9	375479	Plug	1
10	221359	Nut	2
11	300932	Washer	2

FOOTNOTES:**a** ⇒ D/B 04/2002**b** D/B 04/2002 ⇒

<https://www.ebooklibonline.com>

Hello dear friend!

Thank you very much for reading.

Enter the link into your browser.

The full manual is available for immediate download.

<https://www.ebooklibonline.com>