

PARTS MANUAL

**HR45-25, -27, -31, -36L, -40LS,
-40S, -45LSX, HR45H
(B227)**

CUSTOMER EDITION

HYSTER

SECTIONS

1	FRAME
2	DENIZET CABIN
3	ENGINE(S)
4	ELECTRICAL SYSTEM
5	TRANSMISSION
6	DRIVE AXLE
7	STEERING SYSTEM
8	BRAKE SYSTEM
9	HYDRAULIC SYSTEM
10	BOOM
11	L/LS/LSX BOOM
12	WINCH
13	CONTAINER HANDLER B665
14	CONTAINER HANDLER A672
15	STABILIZER
16	LOAD MOMENT LIMITER
17	OPTIONS
18	NUMERICAL INDEX

TABLE OF CONTENTS

DESCRIPTION	PAGE
A	
ACCUMULATOR	
HR45-25, HR45-31, HR45-40S	8-8
L/LS/LSX.....	8-10
AIR CONDITIONER	
SLIDING CAB	
PRESSURIZED	2-14
WIDE CAB	2-12
AIR FILTER.....	3-2
AMPLIFIER.....	9-72
ANTI TIPPING SWITCH.....	7-2
B	
BASE ELECTRO VALVE	9-69
BATTERY.....	4-32
BOOM	
4H 9"6"	
LSX.....	11-2
9 FT. 6 IN. JIB SECTION P1-P2-P3.....	10-2
BOOM CIRCUIT	
HR45-25, HR45-31, HR45-40S	9-24
L/LS/LSX.....	9-26
BOOM EXTEND AND RETRACT VALVE.....	9-56
BOOM HEAD.....	11-3
HR45-25, HR45-31, HR45-40S	10-4
BOOM HOIST VALVE	
SHEET 1 OF 2.....	9-50
SHEET 2 OF 2.....	9-52
BOOM PIVOT BEARING.....	11-4
HR45-25, HR45-31, HR45-40S	10-5
BRAKE	
DINAMIC GEAR.....	14-14
BRAKE CIRCUIT	
HR45-25, HR45-31, HR45-40S	8-2
L/LS/LSX.....	8-3
BRAKE CONTROL CIRCUIT	8-20
BRAKE OIL FILTRATION SYSTEM.....	9-19
BRAKE OIL RESERVOIR.....	8-12
BUMPERS	
B665.....	13-8
C	
CAB RAILS	
SLIDING CAB	
L/LS/LSX	1-20
CAB SUPPORT	
STANDARD AND R/RS.....	2-8
CABIN GLASS AND WIPERS	
WIDE CAB	2-10
CABIN PRESSURIZATION	
FIXED CABIN	2-30

<https://www.ebooklibonline.com>

Hello dear friend!

Thank you very much for reading.

Enter the link into your browser.

The full manual is available for immediate download.

<https://www.ebooklibonline.com>

TABLE OF CONTENTS (Continued)

DESCRIPTION	PAGE
C (continued)	
CABLE AND DECALS.....	12-21
CABLE GUIDE	12-8
CABLE SUPPORT	
BOOM 9 FT. 6 IN.	
HR45-25, HR45-31, HR45-40S.....	10-6
LSX.....	11-5
CABLE WINDER.....	16-3
CAMERA ASSEMBLY	17-34
CHARGE PUMP AND REGULATOR	5-20
CHARGE PUMP FLANGE	
HR45-25, HR45-31, HR45-40S	5-27
CHASSIS BOX	
L/LS/LSX.....	1-10
OPTIONAL COVERS AND HAND RAILS.....	1-8
STANDARD AND R/RS	
LEFT HAND	1-6
CIRCUIT BREAKERS	
WIDE FIXED CAB	
PRESSURIZED.....	2-28
CLUTCH	
FORWARD.....	5-10
FOURTH SPEED.....	5-18
LOW SPEED.....	5-16
REVERSE AND 2ND SHAFT	5-14
THIRD SPEED.....	5-12
COLD CLIMATE KIT.....	17-28
CONTROL BOX.....	14-41
CONTROL BOX MOUNTING	14-42
CONTROL CIRCUIT	12-2
CONTROL SWITCH.....	12-18
CONTROL VALVE AND ATTACHING PARTS	
L/LS/LSX.....	9-44
CONTROL VALVE ASSEMBLY	9-46
WINCH.....	12-16
CONTROL VALVE ATTACHING PARTS	
HR45-25, HR45-31, HR45-40S	9-42
CONTROL VALVE RELIEF SECTION	9-48
CONTROLLER	
APC 100.....	4-29
CONVERTER HOUSING ASSEMBLY	5-2
COOLING CIRCUIT DRIVE AXLE	
HR45-25, HR45-31, HR45-40S	6-12
L/LS/LSX.....	6-14
COUNTERWEIGHT	1-4
CYLINDER POWER PILE SLOPE	14-56

TABLE OF CONTENTS (Continued)

DESCRIPTION	PAGE
D	
DAMPENING	11-18
HR45-25, HR45-31, HR45-40S	10-12
DAMPENING VALVE	11-26
HR45-25, HR45-31, HR45-40S	10-24
DAMPING CYLINDER.....	11-19
HR45-25, HR45-31, HR45-40S	10-13
DERRICKING	11-16
HR45-25, HR45-31, HR45-40S	10-10
DERRICKING CYLINDER.....	11-20
HR45-25, HR45-31, HR45-40S	10-14
DERRICKING CYLINDER CONNECTIONS	
LSX	11-14
DIFFERENTIAL AND PARK BRAKE.....	6-2
DIRECTIONAL VALVE	
WITHOUT POWER PILE SLOPE.....	14-60
DISPLAY AND PRINTER	16-4
DOORS AND STORAGE COVERS	
WIDE CAB	2-6
DRIVE AXLE AND END DRIVE	6-6
DRIVE AXLE CONNECTIONS	6-8
DRIVE AXLE U-JOINT	6-9
L/LS/LSX.....	6-10
DRIVE TIRE AND WHEEL	
18 X 25 BRIDGESTONE	
HR45-36L, HR45-40LS	17-12
18 X 25 GOODYEAR	17-4
18 X 25 MICHELIN	
HR45-25, HR45-31, HR45-40S.....	17-6
18 X 25 PLAIN	17-10
18 X 33 BRIDGESTONE	17-5
18 X 33 GOODYEAR	
HR45-36L, HR45-40LS	17-8
18 X 33 MICHELIN	17-7
21 X 25 BRIDGESTONE	17-3
21 X 25 GOOD YEAR.....	17-2
E	
ELECTRIC CONTROL VALVE	
ELECTRONIC INCHING.....	5-22
ELECTRICAL	
HR45-25, HR45-31, HR45-40S	10-23
LSX	11-24
ELECTRICAL SYSTEM	
POWER PILE SLOPE.....	13-28
WITHOUT POWER PILE SLOPE.....	13-26
END BEAMS	14-26
ENGINE AND TRANSMISSION COOLING	3-22
ENGINE COMPONENTS.....	3-10
ENGINE COOLING SYSTEM	3-18
ENGINE INTAKE COOLING.....	3-20
ENGINE MOUNTING AND ACCESSORIES.....	3-6

TABLE OF CONTENTS (Continued)

DESCRIPTION	PAGE
E (continued)	
ENGINE WIRING AND FITTINGS	3-8
EXHAUST	3-4
EXTENSION CABLE SUPPORT	14-34
EXTENSION CYLINDER ASSEMBLY	13-22
F	
FAN PUMP	3-14
FILTER BRAKE RETURN	8-17
FILTER PUMP CIRCUIT	
L/LS/LSX.....	5-28
FILTER TRANSMISSION OIL	
HR45-25, HR45-31, HR45-40S	5-26
FITTINGS	
BOOM AND ATTACHMENT	
B665.....	13-9
FLANGE COUPLING	
DINAMIC GEAR.....	14-20
FLOOR PLATES AND COVERS	2-2
FRAME	1-2
L/LS/LSX.....	1-3
FUEL CIRCUIT AND FAN PUMP SUPPLY	3-12
FUEL HEATER	17-30
FUEL RESERVIOR	9-16
FUSE BOX.....	3-16
FUSES AND RELAYS	
SLIDING CAB	
PRESSURIZED.....	4-20
WIDE FIXED CAB	
STANDARD AND R/RS	4-18
G	
GENERAL RETURN CIRCUIT	
HR45-25, HR45-31, HR45-40S	9-30
L/LS/LSX.....	9-32
H	
HOOD.....	1-12
HYDRAULIC AND BRAKE COOLING.....	3-28
HYDRAULIC BYPASS FILTRATION SYSTEM	9-20
HYDRAULIC CIRCUIT	
CEC	16-2
MAIN.....	14-44
ROTATOR.....	14-46
SIDE-SHIFT	14-52
TWISTLOCKS.....	14-50
HYDRAULIC CIRCUIT STABILIZER	
HR45-40LS	15-10
HR45-40S	15-11
HYDRAULIC CONTROL CIRCUIT	

TABLE OF CONTENTS (Continued)

DESCRIPTION	PAGE
H (continued)	
HR45-40LS	15-2
HR45-40S	15-4
HYDRAULIC CONTROL VALVE	
HYDRAULIC INCHING	5-24
HYDRAULIC COOLING SYSTEM	9-6
BRAKE OIL	9-9
HYDRAULIC OIL	9-3
HYDRAULIC FILTERING CIRCUIT	3-34
HYDRAULIC LIFTING JACK	17-26
HYDRAULIC MOTOR SUPPORT	
SLIDING CAB	
L/LS/LSX	1-26
HYDRAULIC PENDULAR CYLINDER	
WITH POWER PILE SLOPE	13-39
HYDRAULIC RADIATOR	9-8
HYDRAULIC STOP KIT	
B665	
OPTIONAL	13-4
HYDRAULIC SUPPLY CIRCUIT	
HR45-40LS	15-12
HR45-40S	15-13
HYDRAULIC SYSTEM	
PILE SLOPE	14-51
TELESCOPING	14-48
WITH POWER PILE SLOPE	13-32
WITHOUT POWER PILE SLOPE	13-30
HYDRAULIC TUBING	
BOOM 9 FT. 6 IN.	
HR45-25, HR45-31, HR45-40S	10-20
LSX	11-6
HYDRAULIC TUBING TELESCOPING	
BOOM 9 FT. 6 IN.	
HR45-25, HR45-31, HR45-40S	10-8
HYDRAULIC VALVE	11-28
HR45-25, HR45-31, HR45-40S	10-26
I	
INSTRUMENT PANEL	
L/LS/LSX	
PRESSURIZED	2-24
WIDE CAB	
STANDARD AND R/RS	2-20
INTERIOR COWLING	
SLIDING CAB	
WIDE	4-26
WIDE FIXED CAB	4-22

TABLE OF CONTENTS (Continued)

DESCRIPTION	PAGE
J	
JUNCTION BLOCK	
BOOM AND ATTACHMENT.....	9-68
JOYSTICK.....	9-66
L	
LABELS.....	1-14
LEAK OIL CIRCUIT	
HR45-25, HR45-31, HR45-40S	9-34
L/LS/LSX.....	9-36
LIGHTS.....	11-31
HR45-25, HR45-31, HR45-40S	10-28
L/LS/LSX	
⇒S/N B2271510	4-12
S/N B2271511⇒	4-16
LIGHTS AND HAND RAIL	
STANDARD AND R/RS.....	4-10
LIMIT SWITCH	
27 DEGREES	1-16
L/LS/LSX.....	1-18
LIMIT SWITCH MOUNTING	
HR45-40LS	15-14
HR45-40S	15-16
LOAD LIMITER.....	4-30
LOAD SENSING CIRCUIT	
HR45-25, HR45-31, HR45-40S	9-38
L/LS/LSX.....	9-39
LOAD SENSING SWITCH	9-65
LOWER LIMIT SWITCH	12-19
M	
MAIN PUMP	9-62
MAIN PUMP ATTACHING PARTS	9-60
MAIN PUMP CIRCUIT.....	9-58
MAIN PUMP CONTROL VALVE.....	9-63
MAIN VALVE	
SPREADER TYPE.....	13-16
MAINFRAME	
B665.....	13-2
O	
OIL COOLER SOLENOID VALVE	9-21
OIL RESERVOIR.....	9-14
OIL RETURN MANIFOLD	9-18
P	
PARK BRAKE	8-6
PARK BRAKE CIRCUIT	
L/LS/LSX.....	8-18
PARK BRAKE CONTROL VALVE	
L/LS/LSX.....	8-16

TABLE OF CONTENTS (Continued)

DESCRIPTION	PAGE
P (continued)	
PARK BRAKE SOLENOID VALVE	8-13
PEDAL ARRANGEMENT	
SLIDING CAB	2-18
WIDE FIXED CAB.....	2-16
PILOT CIRCUIT	
HR45-25, HR45-31, HR45-40S	9-28
L/LS/LSX.....	9-29
PLANETARY GEAR	
INTERMEDIATE	
DINAMIC GEAR.....	14-12
PRESSURE SWITCH.....	9-40
PULLEY BLOCK.....	12-6
PUMP CONNECTIONS.....	3-32
PUMP DRIVE AND SHAFT	5-6
PUMP DRIVE SHAFT	9-64
R	
RADIATOR AND FITTINGS.....	3-24
RADIATOR FITTINGS	
HYDRAULICS AND BRAKE COOLING.....	3-30
REDUCING GEAR	
DINAMIC OIL.....	14-18
ROTATION VALVE ASSEMBLY	
DUAL SPEED	13-14
ROTATOR ASSEMBLY	14-4
WITH POWER PILE SLOPE	13-20
WITHOUT POWER PILE SLOPE.....	13-18
ROTATOR BRAKE RELEASE VALVE	14-55
ROTATOR FRAME.....	14-3
ROTATOR MOTOR	
COMER.....	14-8
ROTATOR MOTOR AND TRANSMISSION ASSEMBLY	
B665.....	13-10
ROTATOR MOTOR TRANSMISSION.....	14-6
ROTATOR VALVE	14-54
ROTATOR VALVE ASSEMBLY	
WITH POWER PILE SLOPE	13-40
S	
SEAT.....	2-9
SERVICE BRAKE	
OIL COOLED BRAKE.....	8-4
SERVICE BRAKE CONTROL VALVE	
L/LS/LSX.....	8-15
SIDE-SHIFT CABLE SUPPORT	14-36
SIDE-SHIFT CYLINDER	
A672.....	14-53
B665.....	13-12
SIDE-SHIFT CYLINDER VALVE	14-62

TABLE OF CONTENTS (Continued)

DESCRIPTION	PAGE
S (continued)	
SLIDING BLOCKS	
LSX.....	11-22
RS/LS.....	10-18
STANDARD.....	10-16
SLIDING FRAME	
L/LS/LSX.....	1-22
SOLENOID VALVE	
SLIDING CAB.....	9-71
SOLENOID VALVE BANK	
HR45-40LS.....	15-6
HR45-40S.....	15-8
SOLENOID VALVE GROUP.....	12-20
SOUND REDUCTION.....	17-24
SPEED REDUSER	
DINAMIC OIL.....	14-10
SPREADER CONTROL VALVE.....	14-58
SPREADER FRAME	
WITH POWER PILE SLOPE.....	14-24
WITHOUT POWER PILE SLOPE.....	14-25
SPREADER LIGHTS.....	14-40
SPREADER VALVE.....	9-54
STABILIZER CYLINDER.....	15-18
STABILIZER MOUNTING.....	15-17
STEER AXLE	
LIMITED STROKE.....	7-12
STANDARD AND R/RS	
L/LS/LSX.....	7-10
STEER AXLE MOUNTING	
LIMITED STROKE.....	7-8
R/L/LS/LSX.....	7-6
STANDARD.....	7-4
STEER TIRE AND WHEEL	
18 X 25 BRIDGESTONE.....	17-22
18 X 25 GOOD YEAR	
HR45-25, HR45-31, HR45-40S.....	17-15
18 X 25 MICHELIN	
HR45-24, HR45-31, HR45-40S.....	17-17
18 X 25 PLAIN.....	17-20
18 X 33 BRIDGESTONE	
HR45-36L, HR45-40LS.....	17-16
18 X 33 GOODYEAR.....	17-19
18 X 33 MICHELIN	
HR45-36L, HR45-40LS.....	17-18
21 X 25 BRIDGESTONE.....	17-14
21 X 25 GOOD YEAR.....	17-13
STEERING CIRCUIT	
HR45-25, HR45-31, HR45-40S.....	9-10
L/LS/LSX.....	9-12
SUPPORT SLIDING FRAME	
L/LS/LSX.....	1-24

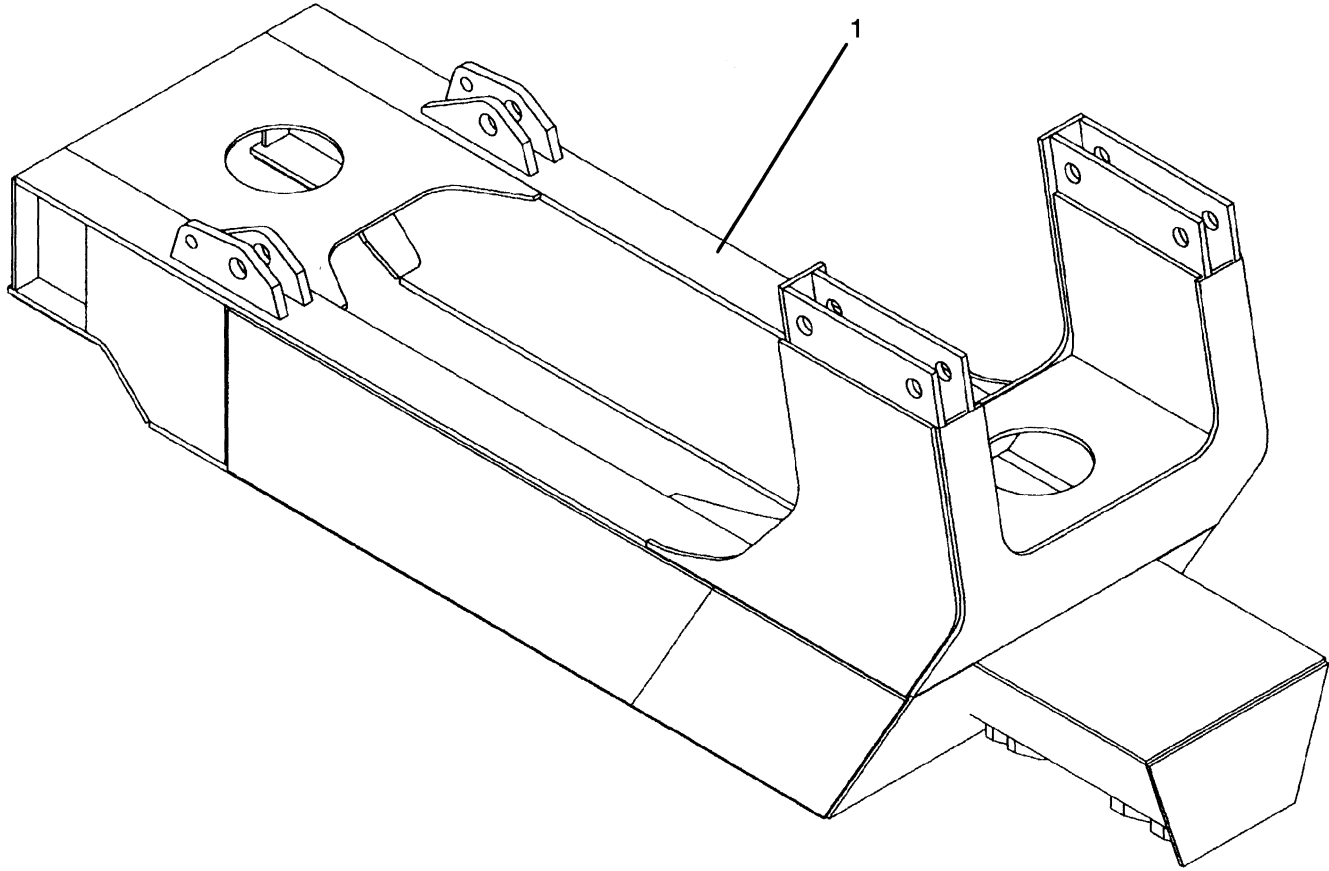
TABLE OF CONTENTS (Continued)

DESCRIPTION	PAGE
T	
TELESCOPING	
BOOM 9 FT. 6 IN.	
HR45-25, HR45-31, HR45-40S.....	10-7
LSX.....	11-10
TELESCOPING CIRCUIT	
LSX.....	11-9
TELESCOPING TRANSMISSION	
DINAMIC OIL.....	14-16
TELESCOPING TRANSMISSION MOTOR	
COMER.....	14-22
TOOL KIT.....	17-32
TORQUE CONVERTER AND DRIVE PLATE.....	5-8
TRANSMISSION CASE AND REAR COVER.....	5-4
TRANSMISSION COOLING LINES.....	3-26
TRANSMISSION TELESCOPING MOTOR.....	14-28
TUBING TELESCOPIC CYLINDER	
LSX.....	11-12
TWIST LOCK ARRANGEMENT.....	13-34
TWIST LOCK ASSEMBLY	
A672.....	14-32
B665.....	13-36
TWIST LOCK CYLINDER.....	13-38
TWIST LOCK INDICATOR LIGHTS.....	11-30
HR45-25, HR45-31, HR45-40S.....	10-27
W	
WEAR PADS.....	14-30
B665.....	13-6
WINCH.....	12-12
WINCH ATTACHING PARTS.....	12-10
WINCH CIRCUIT.....	12-4
WINCH REDUCTION GEAR.....	12-14
WIRE HARNESS	
CAB.....	4-4
ENGINE.....	4-6
MAIN.....	14-38
MAIN FRAME.....	4-2
L/LS/LSX.....	4-3
SENSORS.....	14-39
TRANSMISSION.....	4-8

SECTION 1
FRAME

DESCRIPTION	PAGE
CAB RAILS	
SLIDING CAB	
L/LS/LSX	1-20
CHASSIS BOX	
L/LS/LSX.....	1-10
OPTIONAL COVERS AND HAND RAILS.....	1-8
STANDARD AND R/RS	
LEFT HAND	1-6
COUNTERWEIGHT	1-4
FRAME.....	1-2
L/LS/LSX.....	1-3
HOOD.....	1-12
HYDRAULIC MOTOR SUPPORT	
SLIDING CAB	
L/LS/LSX	1-26
LABELS.....	1-14
LIMIT SWITCH	
27 DEGREES	1-16
L/LS/LSX.....	1-18
SLIDING FRAME	
L/LS/LSX.....	1-22
SUPPORT SLIDING FRAME	
L/LS/LSX.....	1-24

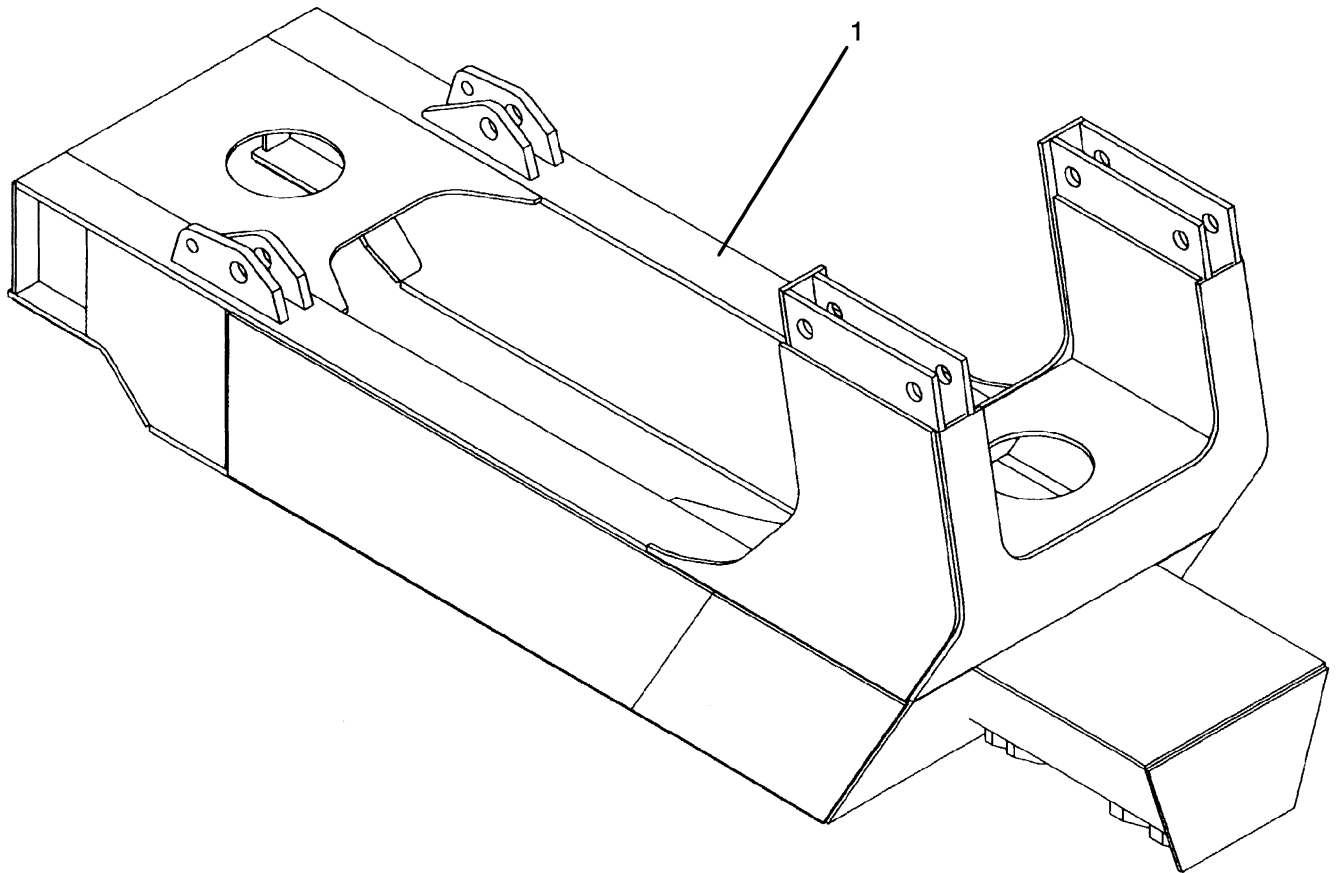
FRAME (Figure 1-1)



HP120599

ITEM	PART NO.	DESCRIPTION	QTY
1	1468878	Frame	1
1	1488109	Frame (RS)	1

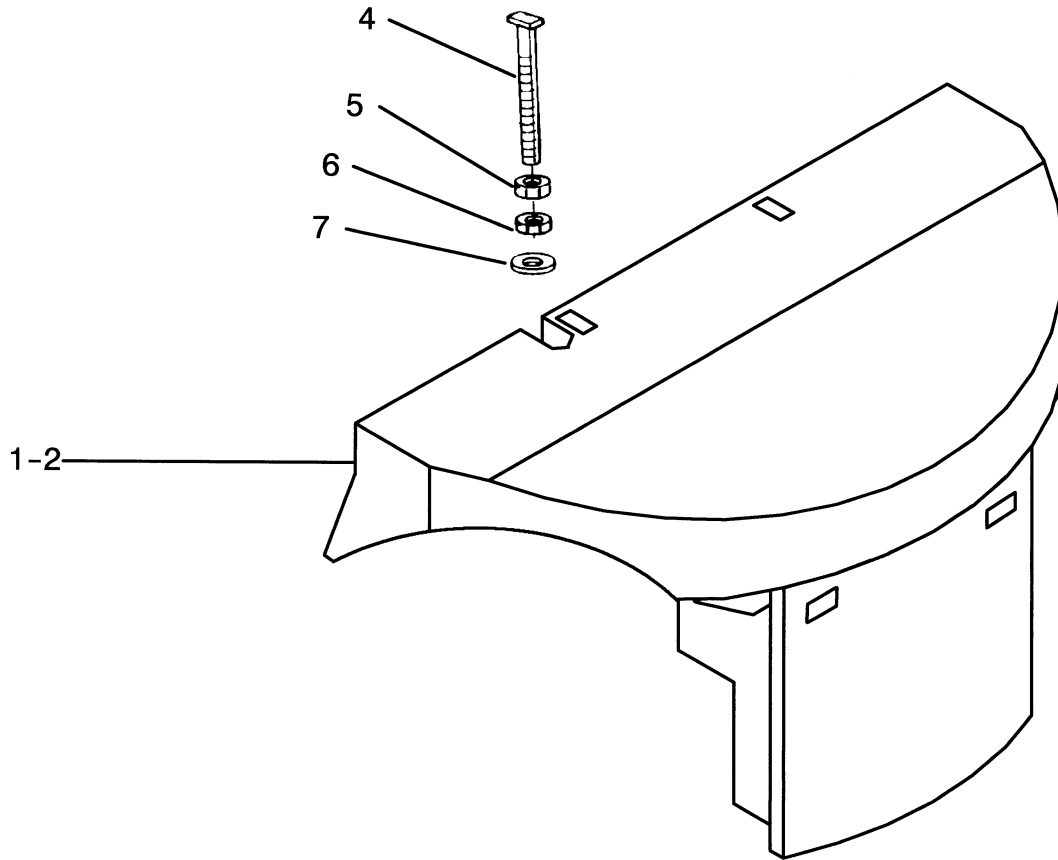
**FRAME (Figure 1-2)
L/LS/LSX**



HP120605

ITEM	PART NO.	DESCRIPTION	QTY
1	1558243	Frame (LSX)	1
1	1585925	Frame (L/LS).....	1

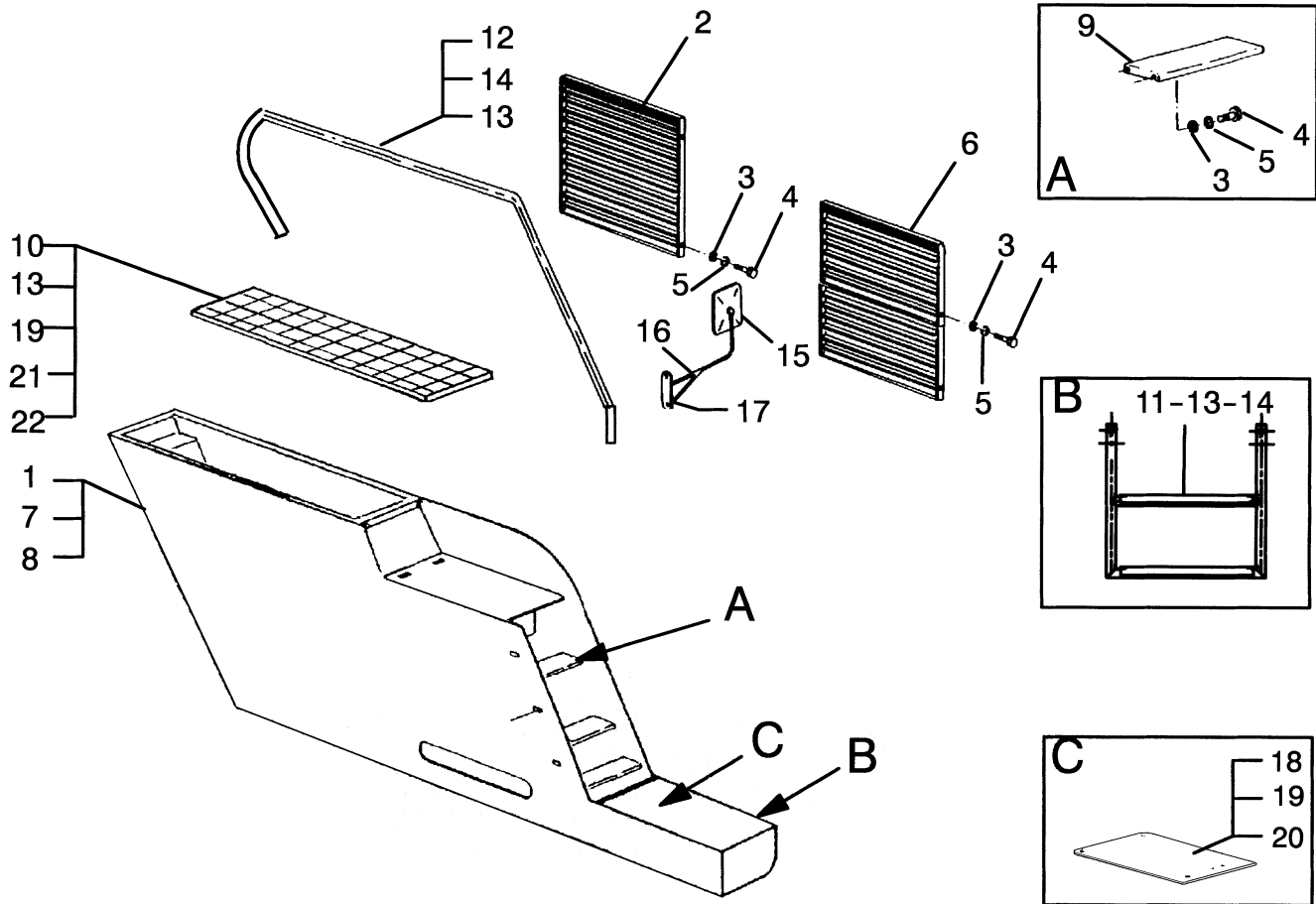
COUNTERWEIGHT (Figure 1-3)



HP120708

ITEM	PART NO.	DESCRIPTION	QTY
1	1550780	Counterweight (HR45-25).....	1
1	1550782	Counterweight (HR45-31, HR45-36L, HR45-40LS).....	1
2	1550783	Counterweight (HR45-40S)	1
2	1558261	Counterweight (LSX)	1
4	1468955	Bolt	4
5	1468956	Nut	4
6	1468957	Nut	4
7	1468958	Washer	4

CHASSIS BOX (Figure 1-4) STANDARD AND R/RS LEFT HAND

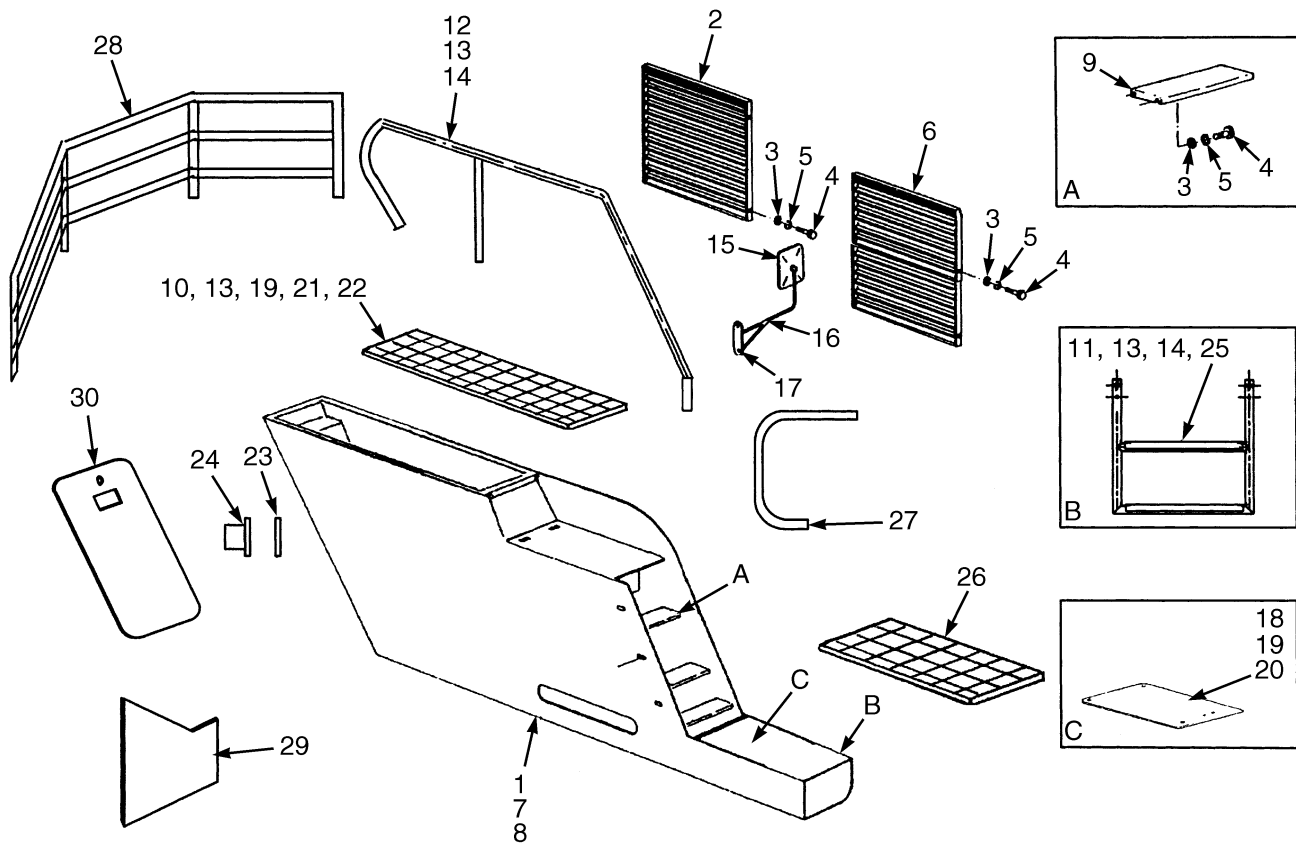


HP120601

**CHASSIS BOX
STANDARD AND R/RS
LEFT HAND**

ITEM	PART NO.	DESCRIPTION	QTY
1	1468879	Housing	1
1	1549300	Frame Box (LH QSM)	1
2	1468880	Grill	1
3	1468345	Washer	14
4	136681	Capscrew.....	14
5	1468114	Washer	14
6	1468884	Grill	1
7	1488545	Washer	10
8	1468886	Bolt	20
9	1468887	Step	2
10	1468888	Bolt	9
11	1475742	Step	1
12	1527450	Rail	1
13	1468893	Nut.....	18
14	1468894	Screw.....	18
15	1468895	Mirror.....	1
16	1468896	Bracket.....	1
17	1468897	Screw.....	2
18	1468898	Plate	1
19	1468899	Screw.....	4
20	1468900	Catch	4
21	1468901	Fitting.....	4
22	1468902	Grill	1

CHASSIS BOX (Figure 1-5) OPTIONAL COVERS AND HAND RAILS

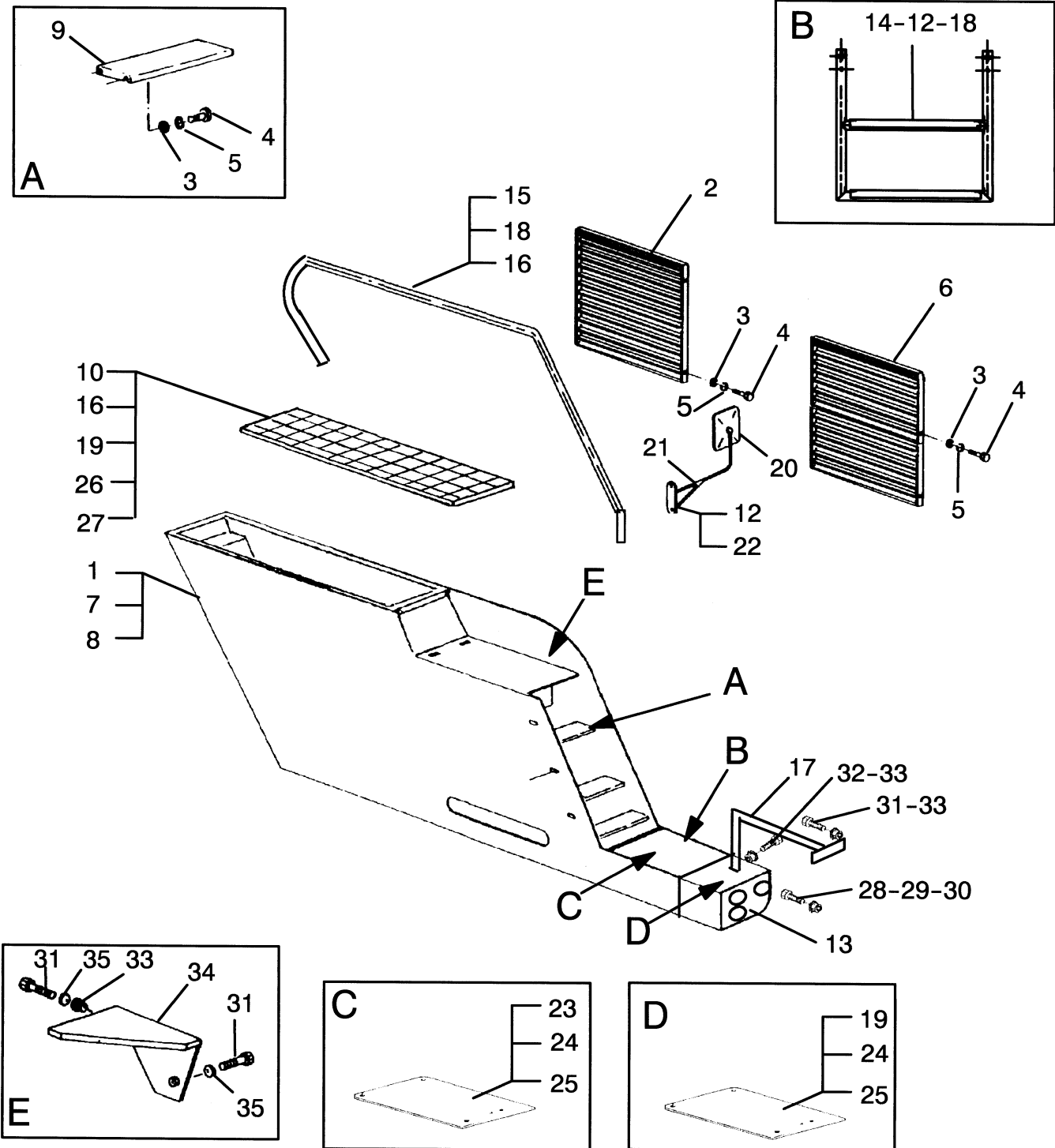


HP120738

CHASSIS BOX OPTIONAL COVERS AND HAND RAILS

ITEM	PART NO.	DESCRIPTION	QTY
1	1468879	Housing	1
1	1549300	Frame Box (LH QSM)	1
2	1559801	Grill (Large).....	1
3	1468345	Washer	14
4	136681	Capscrew.....	14
5	1468114	Washer	14
6	1559802	Grill (Small).....	1
7	1488545	Washer	10
8	1468886	Bolt	20
9	1468887	Step	2
10	1468888	Bolt	9
11	1549304	Gril Step.....	4
12	1549306	Hand Rail.....	1
13	1468893	Nut	18
14	1468894	Screw.....	18
15	1468895	Mirror	1
16	1468896	Bracket.....	1
17	1468897	Screw.....	2
18	1468898	Plate	1
19	1468899	Screw.....	4
20	1468900	Catch	4
21	1468901	Fitting.....	4
22	1468902	Grill	1
23	1549302	Bushing.....	1
24	1549303	Plug	1
25	1549307	Step (Grid)	6
26	1549308	Step	2
27	1549309	Hand Rail.....	2
28	1549310	Guard Rail	1
29	1549311	Mad Flap Kit	2
30	1549312	Inspection Door	1

CHASSIS BOX (Figure 1-6) L/LS/LSX

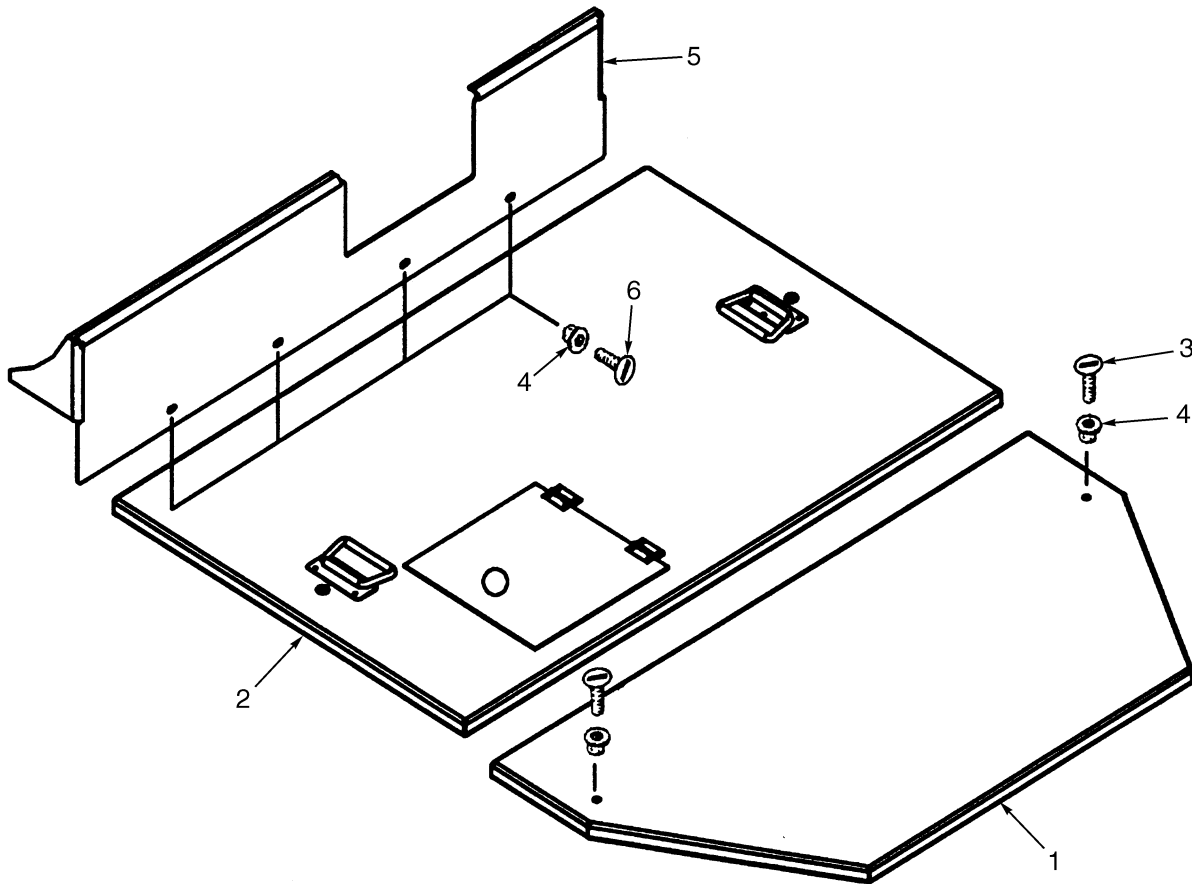


HP120606

**CHASSIS BOX
L/LS/LSX**

ITEM	PART NO.	DESCRIPTION	QTY
1	1468879	Housing	1
1	1549300	Frame Box (LH QSM)	1
2	1559801	Grill (Large).....	1
3	1468345	Washer	14
4	136681	Capscrew.....	14
5	1468114	Washer	14
6	1559802	Grill (Small).....	1
7	1488545	Washer	10
8	1468886	Bolt	20
9	1468887	Step	2
10	1468888	Bolt	9
11	1468224	Bolt	4
12	1468223	Nut	4
13	1475741	Box (Left)	1
14	1475742	Step	1
15	1527450	Rail	1
16	1468893	Nut	8
17	1475743	Ramp	1
18	1468894	Screw.....	9
19	1475744	Platform	1
20	1468895	Mirror	1
21	1468896	Bracket.....	1
22	1468897	Screw.....	2
23	1468898	Plate	1
24	1468899	Screw.....	8
25	1468900	Catch	4
26	1468901	Fitting.....	4
27	1468902	Grill	1
28	1470558	Bolt	6
29	1469857	Washer	6
30	1470942	Nut	6
31	136985	Capscrew.....	4
32	1472097	Bolt	1
33	1468893	Nut	5
34	1475747	Step	1
35	1468907	Washer	2

HOOD (Figure 1-7)



HP120709

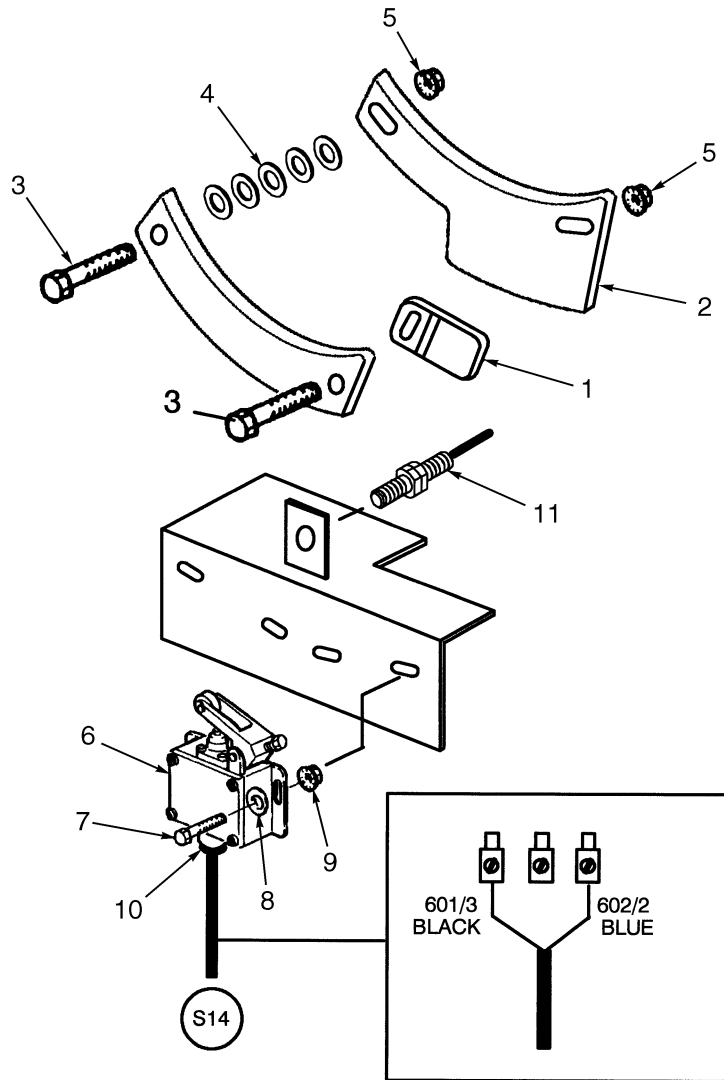
ITEM	PART NO.	DESCRIPTION	QTY
1	1549316	Engine Cover	1
2	1480298	Cover	1
3	1471196	Bolt	2
4	1468223	Nut	6
5	1549315	Cover (Front Insolation)	1
6	1468224	Bolt	4

LABELS

ITEM	PART NO.	DESCRIPTION	QTY
1	1507007	Label (HR40-25)	2
2	1507008	Label (HR45-31)	2
3	1507009	Label (HR45-40S).....	2
4	1507010	Label (HR45-36L)	2
5	1507011	Label (HR45-40LS).....	2
6	1507012	Label (Yardmaster)	3
7	1507013	Label (Hyster) (Black)	2
8	1507039	Label (Hyster) (Black)	1
9	1507014	Label (Hyster) (Black)	1
10	1507015	Label (Hyster) (White)	3
11	1507017	Label (25KM/U)	1
12	1507018	Label (Tire Pressure).....	4
12	a 1510378	Label (Tire Pressure).....	4
13	b	Label (Capacity Chart).....	1
14	1507023	Label (Tire Pressure).....	2
15	1507024	Label (Rotation/Extension)	1
16	1507025	Label (Twistlock On)	1
17	1507026	Label (Check Rotator Bolts).....	1
18	1507027	Label (Check Security)	1
19	1507028	Label (Wheel Nut Torque).....	1
20	1491187	Safety Tread.....	5
21	1507030	Label (Accumulator).....	1
22	1507031	Label (Radiator Cap)	1
23	1507033	Label (Lifting Point).....	1
24	1507034	Label (Spreader Lift Point)	1
25	1507035	Label (Warning)	1
26	1507037	Label (Boom Lift Point)	1
26	1559621	Label (Lifting).....	1

FOOTNOTES:**a** L, LS, LSX Models**b** See Your Local Hyster Dealer

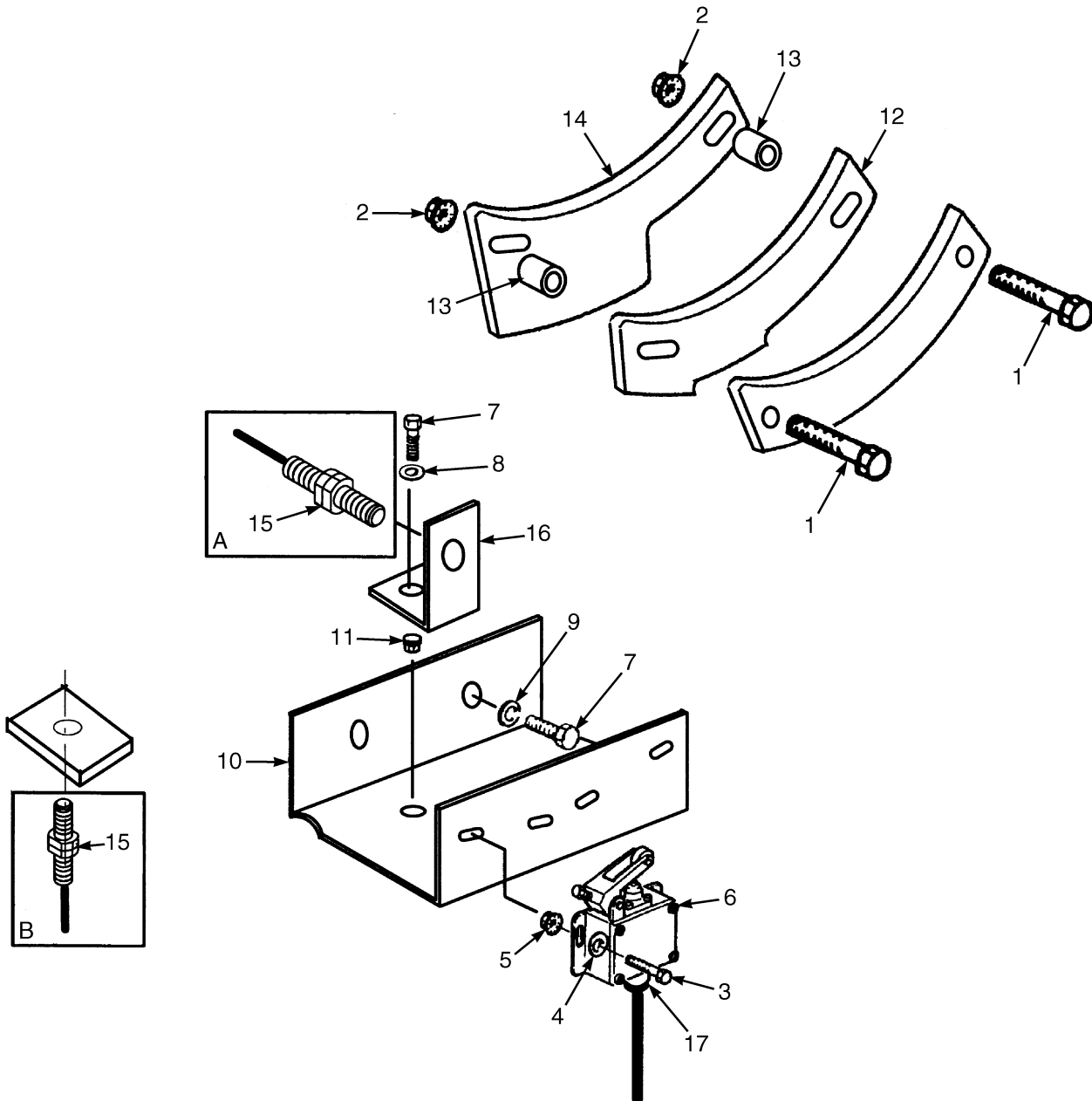
LIMIT SWITCH (Figure 1-9) 27 DEGREES



HP120604

ITEM	PART NO.	DESCRIPTION	QTY
1	1480287	Cam	1
2	1470946	Plate	1
3	1470356	Bolt	1
4	1469857	Washer	5
5	1470942	Nut	2
6	1470943	Switch	1
7	292501	Capscrew	2
8	1468159	Washer	2
9	1468262	Nut	2
10	1470601	Gland	1
11	1470947	Switch	2

LIMIT SWITCH (Figure 1-10) L/LS/LSX



HP120740



Suggest:

For more complete manuals. Please go to the home page.

<https://www.ebooklibonline.com>

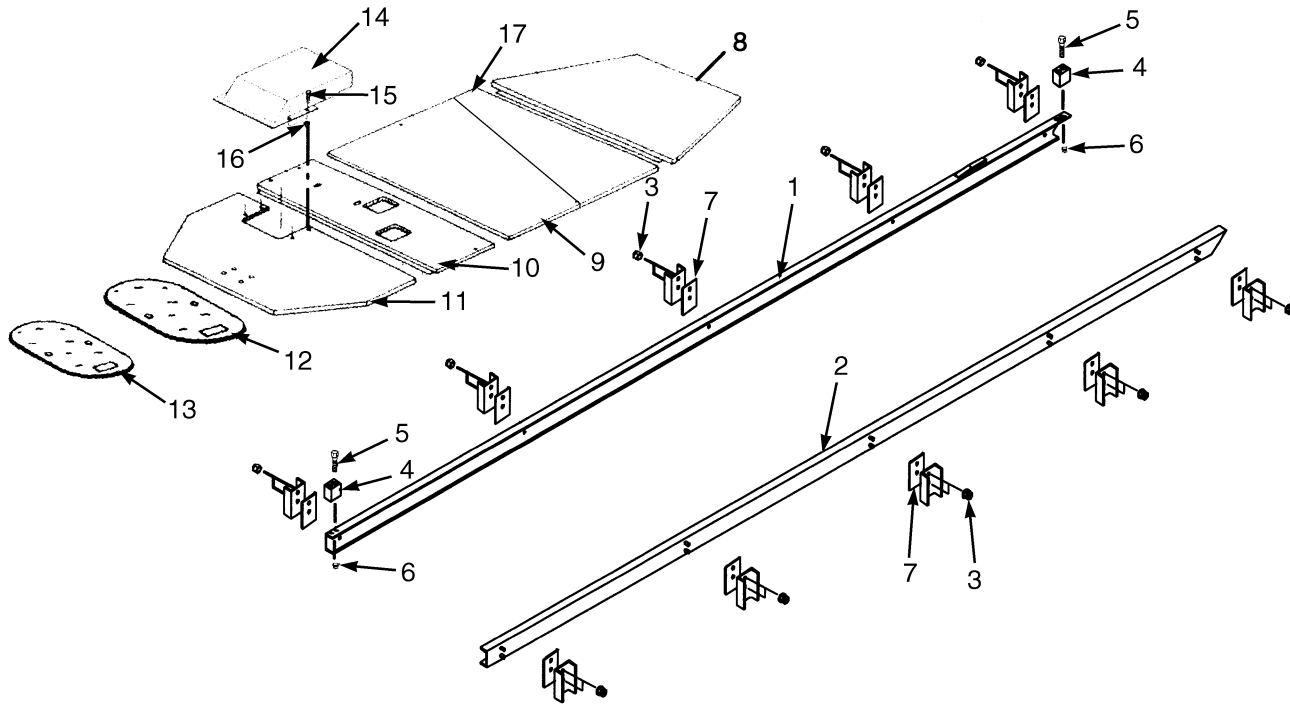
If the above button click is invalid. Please download this document first, and then click the above link to download the complete manual.

Thank you so much for reading

**LIMIT SWITCH
L/LS/LSX**

ITEM	PART NO.	DESCRIPTION	QTY
1	1470940	Bolt	1
2	1470942	Nut	1
3	292501	Capscrew.....	2
4	1468159	Washer	2
5	1468262	Nut	2
6	1470943	Switch	1
7	1468371	Nut	3
8	1469149	Washer	2
9	1468373	Washer	1
10	1475737	Support.....	1
11	1468893	Nut	1
12	1470944	Cam	1
13	1470945	Spacer	2
14	1470946	Plate	1
15	1470947	Switch	1
16	1470949	Support.....	1
17	1470601	Gland.....	1

CAB RAILS (Figure 1-11) SLIDING CAB L/LS/LSX



HP120840

ITEM	PART NO.	DESCRIPTION	QTY
1	1475754	Rail	1
2	1475755	Rail	1
3	1468941	Nut	20
4	1470953	Stop	2
5	1470954	Bolt	4
6	1470955	Nut	4
7	1475756	Spacer	25
8	1470957	Plate	1
9	1558258	Cover (Center Front)	1
10	1470959	Plate	1
11	1470960	Plate	1
12	1470961	Plate	1
13	1475757	Plate	1
14	1470962	Cover	1
15	136681	Capscrew	4
16	1468223	Nut	4
17	1558259	Cover (Center Rear)	1

<https://www.ebooklibonline.com>

Hello dear friend!

Thank you very much for reading.

Enter the link into your browser.

The full manual is available for immediate download.

<https://www.ebooklibonline.com>