

PARTS MANUAL

SPACESAVER

**S135-S155XL2 [S6.00-7.00XL]
(B024)**

CUSTOMER EDITION

HYSTER

SECTIONS

1	FRAME
2	ENGINE(S)
3	FUEL SYSTEM
4	ELECTRICAL SYSTEM
5	TRANSMISSION
6	STEERING SYSTEM
7	BRAKE SYSTEM
8	HYDRAULIC SYSTEM
9	MAST-TWO STAGE LIMITED FREE-LIFT
10	MAST-THREE STAGE FULL FREE-LIFT
11	OPTIONS
12	NUMERICAL INDEX

TABLE OF CONTENTS

DESCRIPTION	PAGE
A	
AIR FILTER	
⇒S/N B024D-2267 EXC. 2263	3-62
S/N B024D-2268⇒ INC. 2263	3-64
ALTERNATOR	
DELCO BRAND	
⇒S/N B024D-4752.....	4-66
GASOLINE, LPG AND DIESEL	
S/N B024D-4753⇒.....	4-70
PRESTOLITE BRAND	4-72
ALTERNATOR MOUNTING	
DIESEL 1004.42	
WITH LOW EMISSIONS	4-76
B	
BACK-UP ALARM	11-18
BATTERY DISCONNECT	
S/N B024D-4072⇒	4-48
BRAKE	
ASBESTOS	
⇒S/N B024D-2083.....	7-8
NON-ASBESTOS	
S/N B024D-2084⇒.....	7-10
BRAKE BOOSTER.....	7-14
BRAKE LINES.....	7-16
C	
CAMSHAFT AND OIL PAN	
GASOLINE AND LPG	
2000 SERIES ENGINE	2-112
4LM 1994 SERIES ENGINE	2-104
5LM 1995 SERIES ENGINE	2-106
CAMSHAFT AND OIL SUMP	
GASOLINE AND LPG.....	2-108
CARBURETOR	
GASOLINE	
⇒S/N B024D-2267.....	3-40
LPG.....	3-34
S/N B024D-4059⇒ INC. 4039 EXC. 4084	3-36
CARRIAGE	
THREE STAGE FULL FREE-LIFT	10-22
TWO STAGE LIMITED FREE-LIFT.....	9-12
CLUTCH PACK	
POWERSHIFT	
DIRECTIONAL	
S/N B024D-07376Y⇒.....	5-34
INPUT	
S/N B024D-07376Y⇒.....	5-32
CLUTCH PACKS	
POWERSHIFT	
⇒S/N B024D-07375Y EXC. 7317, 7340, 7349-7350, 7358-7359, 7361-7362, 7374	5-30

<https://www.ebooklibonline.com>

Hello dear friend!

Thank you very much for reading.

Enter the link into your browser.

The full manual is available for immediate download.

<https://www.ebooklibonline.com>

TABLE OF CONTENTS (Continued)

DESCRIPTION	PAGE
C (continued)	
CLUTCH PEDAL	
OIL CLUTCH.....	5-20
CONTROL LINKAGE	
OIL CLUTCH.....	5-14
POWERSHIFT	5-44
CONTROL VALVE	
AUXILIARY	
FIFTH FUNCTION.....	8-70
FOUR AND FIVE FUNCTION	
⇒S/N B024D-6444.....	8-54
S/N B024D-6445⇒.....	8-58
POWERSHIFT	5-36
THREE FUNCTION	
⇒S/N B024D-6444.....	8-50
TWO AND THREE FUNCTION	
S/N B024D-6445⇒.....	8-56
TWO FUNCTION	
⇒S/N B024D-6444.....	8-46
CONTROL VALVE ATTACHING PARTS	
FOUR AND FIVE FUNCTION	
⇒S/N B024D-6444.....	8-52
THREE FUNCTION	
⇒S/N B024D-6444.....	8-48
TWO FUNCTION	
⇒S/N B024D-6444.....	8-44
CONTROL VALVE ATTACHING PARTS WITH FITTINGS	
FOUR AND FIVE FUNCTION	
S/N B024D-6445⇒.....	8-66
TWO AND THREE FUNCTION	
S/N B024D-6445⇒.....	8-60
CONTROL VALVE ATTACHING TUBES	
FOUR AND FIVE FUNCTION	
S/N B024D-6445⇒.....	8-68
TWO AND THREE FUNCTION	
S/N B024D-6445⇒.....	8-64
CONVERTER	
LPG	
⇒S/N B024D-2908.....	3-46
S/N B024D-2909↔S/N B24D-5105	3-48
S/N B024D-5106⇒.....	3-50
COOLANT PUMP	
DIESEL	
WITH LOW EMISSIONS	
S/N B024D-5288⇒ ⇒S/N U892125D	2-142
S/N U892126D⇒.....	2-144
WITHOUT LOW EMISSIONS	
⇒S/N B024D-5288	2-140
COOLING	
DIESEL	
WITH LOW EMISSIONS	

TABLE OF CONTENTS (Continued)

DESCRIPTION	PAGE
C (continued)	
S/N B024D-5288⇒	2-12
GASOLINE AND LPG	
S/N B024D-3207⇒.....	2-8
⇒S/N B024D3206	2-4
COUNTERWEIGHT	1-8
COWL AND FLOOR PLATES	1-10
CRANKSHAFT AND CAMSHAFT	
GASOLINE AND LPG	
2KM 1992 SERIES ENGINE	
S/N B024D-2263⇒ (LPG), S/N B024D-2268⇒ (GASOLINE).....	2-96
3KM 1993 SERIES ENGINE.....	2-100
⇒S/N B024D-2262 (LPG), ⇒S/N B024D-2267 (GASOLINE)	2-92
CRANKSHAFT AND PISTON	
DIESEL	
WITH LOW EMISSIONS	
S/N B024D-5288⇒	2-150
WITHOUT LOW EMISSIONS	
⇒S/N B024D-5288	2-120
CYLINDER BLOCK	
DIESEL	
WITH LOW EMISSIONS	
S/N B024D-5288⇒	2-146
WITHOUT LOW EMISSIONS	
⇒S/N B024D-5288	2-118
GASOLINE AND LPG	
1996 THRU 1999 SERIES ENGINE	2-48
2000 THRU 2003 SERIES ENGINE	2-52
2KM 1992 SERIES ENGINE	
S/N B024D-2263⇒ (LPG), S/N B024D-2268⇒ (GASOLINE).....	2-38
3KM 1993 SERIES ENGINE.....	2-42
4LM 1994 SERIES ENGINE	2-44
5LM 1995 SERIES ENGINE	2-46
⇒S/N B024D-2262 (LPG), ⇒S/N B024D-2267 (GASOLINE)	2-34
CYLINDER HEAD	
DIESEL	
WITH LOW EMISSIONS	
S/N B024D-5288⇒	2-148
WITHOUT LOW EMISSIONS	
⇒S/N B024D-5288	2-122
GASOLINE AND LPG.....	2-72
2000 SERIES ENGINE	2-74
2KM 1992 SERIES ENGINE	
S/N B024D-2263⇒ (LPG), S/N B024D-2268⇒ (GASOLINE).....	2-60
3KM 1993 SERIES ENGINE.....	2-64
4LM 1994 SERIES ENGINE	2-68
5LM 1995 SERIES ENGINE	2-70
⇒S/N B024D-2262 (LPG), ⇒S/N B024D-2267 (GASOLINE)	2-56

TABLE OF CONTENTS (Continued)

DESCRIPTION	PAGE
D	
DIFFERENTIAL	
OIL CLUTCH.....	5-10
DIFFERENTIAL AND CARRIER	
POWERSHIFT	5-40
DISTRIBUTOR	
2KM 1992, 3KM 1993, AND 5LM 1995 SERIES ENGINES	4-90
LM4 1994, LX6 1996, LX7 1997, LX8 1998, LX9 1999, AND 2000 SERIES ENGINES	4-92
⇒S/N B024D-2262 (LPG), ⇒S/N B024D-2267 (GASOLINE)	4-88
DRIVE AXLE	5-50
E	
ELECTRICAL	
DIESEL	4-44
GASOLINE	
S/N B024D-2268⇔S/N B024D-4058 INC. 4084 EXC. 4039	4-12
SHEET 1 OF 2	
S/N B024D-5563⇔S/N B024D-6153.....	4-24
S/N B024D-6154⇒	4-32
SHEET 2 OF 2	
S/N B024D-5563⇔S/N B024D-6153.....	4-28
S/N B024D-6154⇒	4-34
GASOLINE AND LPG	
⇒S/N B024D-2262 (LPG), ⇒S/N B024D-2267 (GASOLINE)	4-4
S/N B024D-2263⇒ (LPG), S/N B024D-2268⇔S/N B024D-4058 INC. 4084 EXC. 4039 (GASOLINE).....	4-8
S/N B024D-4059⇔S/N B024D-5562 INC. 4039 EXC. 4084	4-16
LPG	
S/N B024D-2263⇔S/N B024D-4058 INC. 4084 EXC. 4039	4-20
S/N B024D-4059⇔S/N B024D-5562 INC. 4039 EXC. 4084	4-22
SHEET 1 OF 2	
S/N B024B-5563⇒	4-38
SHEET 2 OF 2	
S/N B024B-5563⇒	4-42
ENGINE MOUNT.....	2-26
EXHAUST	
COUNTERWEIGHT	2-18
OVERHEAD	2-22
F	
FIRE EXTINGUISHER	11-16
FLYWHEEL HOUSING.....	2-30
FORK.....	1-38
FREE-LIFT	
THREE STAGE FULL FREE-LIFT	10-12
FREE-LIFT CYLINDER	
THREE STAGE FULL FREE-LIFT	10-20
FUEL INJECTION	
HIGH PRESSURE	
DIESEL WITHOUT LOW EMISSIONS	
⇒S/N B024D-5287	3-68
LOW PRESSURE	
DIESEL WITH LOW EMISSIONS	

TABLE OF CONTENTS (Continued)

DESCRIPTION	PAGE
F (continued)	
S/N B024D-5288⇒	3-78
FUEL INJECTION AND PUMP	
HIGH PRESSURE	
DIESEL WITH LOW EMISSIONS	
S/N B024D-5288⇒	3-72
FUEL LINES	
LOW PRESSURE	
DIESEL WITHOUT LOW EMISSIONS	
⇒S/N B024D-5287	3-74
FUEL SYSTEM	
GASOLINE	
⇒S/N B024D-2267	3-16
S/N B024D-2268⇒	3-20
LPG	
⇒S/N B024D-2262	3-4
S/N B024D-2263⇔S/N B024D-4058 INC. 4084 EXC. 4039	3-8
S/N B024D-4059⇒ INC. 4039 EXC. 4084	3-12
FUEL TANK	
LPG	3-24
⇒S/N B024D-2267	3-28
S/N B024D-2268⇒	3-30
FUEL TANK BRACKET	
LPG EUROPE	3-26
FULL SUSPENSION SEAT	
EUROPEAN OPTION	
SHEET 1 OF 2	1-30
SHEET 2 OF 2	1-32
SHEET 1 OF 2	
S/N B024D-07019Y⇒	1-22
SHEET 2 OF 2	
S/N B024D-07019Y⇒	1-26
G	
GAUGE CLUSTER	
⇒S/N B024D02456N	4-62
S/N B024D02457N⇒	4-64
GOVERNOR	3-38
H	
HEADER HOSE	
THREE STAGE FULL FREE-LIFT	11-6
TWO STAGE LIMITED FREE-LIFT	11-2
HOOD	1-6
HYDRAULIC FILTER	8-32
HYDRAULIC LINES	
⇒S/N B024D-2456	8-4
S/N B024D-2457⇔S/N B24D-6215	8-8
HYDRAULIC PUMP	8-20
ATTACHING PARTS	8-18

TABLE OF CONTENTS (Continued)

DESCRIPTION	PAGE
H (continued)	
HYDRAULIC SYSTEM	
S/N B024D-6215⇒	8-12
STEERING HYDRAULIC	
S/N B024D-6215⇒	8-14
HYDRAULIC TANK	
⇒S/N B024D-6215	8-30
I	
INNER MAST	
THREE STAGE FULL FREE-LIFT	10-6
TWO STAGE LIMITED FREE-LIFT	9-4
INSTRUMENT PANEL	
⇒S/N B024D-1751 INC. 1866	4-50
S/N B024D-2263⇒ (LPG), S/N B024D-2268⇒ (GASOLINE)	4-58
⇒S/N B024D-2267 EXC. 1866 (GASOLINE), S/N B024D-1752↔S/N B024D-2262 EXC. 1866 (LPG)	4-54
INTERMEDIATE MAST	
THREE STAGE FULL FREE-LIFT	10-4
L	
LABELS	1-3
LIFT	
TWO STAGE LIMITED FREE-LIFT	9-6
LIFT CYLINDER	
TWO STAGE LIMITED FREE-LIFT	9-10
LIFT PUMP	
DIESEL	
WITH LOW EMISSIONS	
S/N B024D-5288⇒	3-61
WITHOUT LOW EMISSIONS	
⇒S/N B024D-5287	3-60
LIGHTS	11-9
LOAD BACKREST EXTENSION	1-36
LOCK-OFF FILTER	
LPG	3-45
M	
MAIN LIFT	
THREE STAGE FULL FREE-LIFT	10-8
MAIN LIFT CYLINDER	
THREE STAGE FULL FREE-LIFT	10-16
MANIFOLD	
DIESEL	
WITH LOW EMISSIONS	
S/N B024D-5288⇒	2-138
WITHOUT LOW EMISSIONS	
⇒S/N B024D-5288	2-136
MONOTROL PEDAL	3-66

TABLE OF CONTENTS (Continued)

DESCRIPTION	PAGE
O	
OIL CLUTCH	5-16
OIL FILTER	
DIESEL	
WITH LOW EMISSIONS	
S/N B024D-5288⇒	2-134
WITHOUT LOW EMISSIONS	
⇒S/N B024D-5288	2-133
OIL PAN	
DIESEL	
WITHOUT LOW EMISSIONS	
⇒S/N B024D-5288	2-126
OIL PAN AND PUMP	
DIESEL	
WITH LOW EMISSIONS	
S/N B024D-5288⇒	2-154
OIL PUMP	
GASOLINE AND LPG	
4LM 1994, 5LM 1995, 6LX 1996-2001 SERIES ENGINE	2-116
LAST USED ON 3KM 1993 SERIES ENGINE	2-115
OUTER MAST	
THREE STAGE FULL FREE-LIFT	10-2
TWO STAGE LIMITED FREE-LIFT	9-2
OVERHEAD GUARD	1-34
P	
PARK BRAKE	7-12
PEDAL LINKAGE	
OIL CLUTCH	7-6
POWERSHIFT	7-2
PUMP ADAPTER	
DIESEL	8-28
S	
SEAT	
STANDARD WITH OPERATOR RESTRAINT	
GASOLINE AND DIESEL	1-18
LPG	1-14
SUSPENSION WITH OPERATOR RESTRAINT	
GASOLINE AND DIESEL	
⇒S/N B024D-07018Y	1-20
LPG	
⇒S/N B024D-07018Y	1-16
SEAT MOUNTING	
FULL SUSPENSION	
S/N B024D-07019Y⇒	1-28
SERPENTINE BELT DRIVE	
GASOLINE AND LPG	
S/N B024D-4059⇒ INC. 4039 EXC. 4084	2-14
STARTER	
DIESEL	4-84
OPTIONAL	4-86

TABLE OF CONTENTS (Continued)

DESCRIPTION	PAGE
S (continued)	
GASOLINE AND LPG	
S/N B024D-4059⇒ INC. 4039 EXC. 4084	4-82
⇒S/N B024D03002S	4-78
S/N D024D4058⇔S/N D024D3002S INC. 4084 EXC. 4039	4-80
STEERING AXLE	6-12
STEERING COLUMN	
⇒S/N B024D-1897	6-2
S/N B024D-1898⇔S/N B024D-2456	6-4
S/N B024D-2457⇒	6-6
STEERING CONTROL UNIT	6-10
STEERING CYLINDER	6-16
STEERING PUMP	
S/N B024D-6215⇒	8-26
⇒S/N B024D-6215	8-22
STROBE LIGHT	
HIGH INTENSITY	11-14
MEDIUM INTENSITY	11-12
T	
THROTTLE BODY INJECTOR	
S/N B024D-2268⇒ (GASOLINE)	3-42
THROTTLE LINKAGE	3-52
THROTTLE PEDAL	
OIL CLUTCH AND POWERSHIFT WITH FORWARD/REVERSE LEVER	3-56
POWERSHIFT WITH MONOTROL PEDAL	3-58
TILT CYLINDER	8-34
TIMING GEAR	
DIESEL	
WITH LOW EMISSIONS	
S/N B024D-5288⇒	2-152
WITHOUT LOW EMISSIONS	
⇒S/N B024D-5288	2-124
TORQUE CONVERTER	
POWERSHIFT	5-47
TRANSMISSION	
OIL CLUTCH	5-2
POWERSHIFT	5-22
TRANSMISSION GEARS	
OIL CLUTCH	5-6
POWERSHIFT	
⇒S/N B024D-07375Y EXC. 7317, 7340, 7349-7350, 7358-7359, 7361-7362, 7374	5-26
S/N B024D-07376Y⇒	5-28
TRANSMISSION HYDRAULIC	
OIL CLUTCH	8-36
POWERSHIFT	
⇒S/N B024D-5773	8-40
S/N B024D-5774⇒	8-42
TRANSMISSION PUMP	
OIL CLUTCH	8-38

TABLE OF CONTENTS (Continued)

DESCRIPTION	PAGE
U	
UNIVERSAL JOINT	
OIL CLUTCH.....	5-12
POWERSHIFT	5-48
V	
VALVE COVER	
DIESEL	
WITHOUT LOW EMISSIONS	
⇒S/N B024D-5288.....	2-130
VALVE COVER AND INLET MANIFOLD	
GASOLINE AND LPG.....	2-84
2000 SERIES ENGINE	2-88
4LM 1994 SERIES ENGINE	2-76
5LM 1995 SERIES ENGINE	2-80
VALVE COVER AND ROCKER ARM SHAFT	
DIESEL	
WITH LOW EMISSIONS	
S/N B024D-5288⇒.....	2-158
W	
WATER SEPARATOR AND FILTER	
DIESEL.....	3-81
WIRE HARNESS	
COWL	
DIESEL.....	4-98
GASOLINE AND LPG	
S/N B024D-2263⇒ (LPG), S/N B024D-2268⇒ (GASOLINE).....	4-96
DIESEL TIER II ENGINE	
S/N B024V-1575Y⇒	4-128
GASOLINE	
SHEET 1 OF 2	
S/N B024D-2268⇔S/N B024D-6153.....	4-112
SHEET 2 OF 2	
S/N B024D-2268⇔S/N B024D-6153.....	4-116
GASOLINE ENGINE	
SHEET 1 OF 2	
S/N B024D-6154⇔S/N B024V-1575Y	4-120
S/N B024V-1575Y⇒.....	4-124
SHEET 2 OF 2	
S/N B024D-6154⇔S/N B024V-1574Y	4-122
S/N B024V-1575Y⇒.....	4-126
GOVERNOR	
S/N B024D-2263⇔S/N B024D-2537 (LPG), S/N B024D-2268⇔S/N B024D-2537 (GASOLINE).....	4-94
S/N B024D-2538⇒.....	4-95
LPG ENGINE	
S/N B024D-06657⇔S/N B024D-01316	4-106
S/N B024D-07317⇒.....	4-108
S/N B024D-2263⇔S/N B024D-5048 INC. 4084 EXC. 4039.....	4-100
S/N B024D-4059⇔S/N B024D-05562W INC. 4039 EXC. 4084	4-104
S/N B024V-1575Y⇒	4-110
NEUTRAL START WITH FORWARD/REVERSE LEVER	

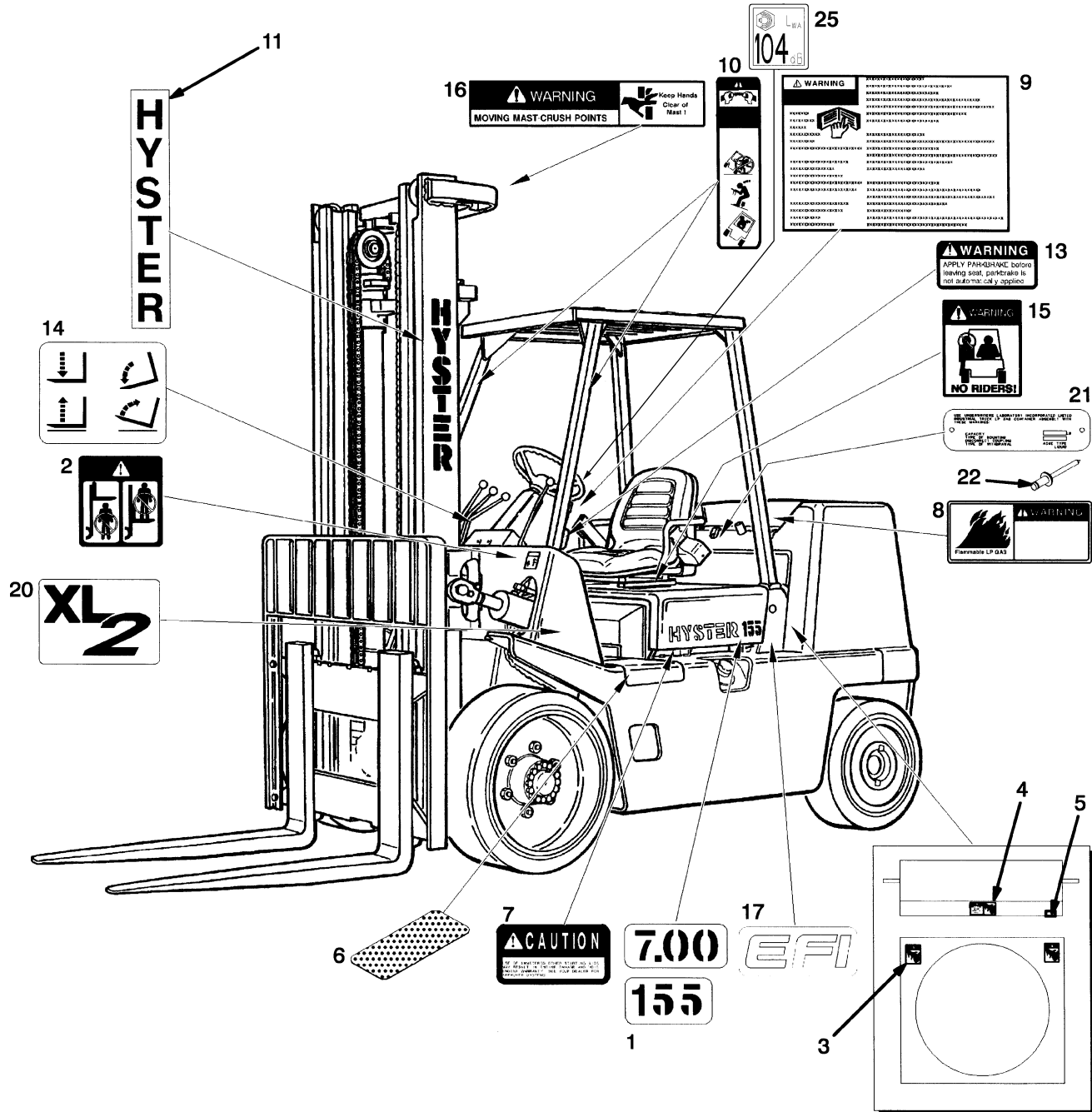
TABLE OF CONTENTS (Continued)

DESCRIPTION	PAGE
W (continued)	
S/N B024D-2263⇒ (LPG), S/N B024D-2268⇒ (GASOLINE)	4-131
NEUTRAL START WITH MONOTROL PEDAL	
S/N B024D-2263⇒ (LPG), S/N B024D-2268⇒ (GASOLINE)	4-130
OIL CLUTCH	
S/N B024D-2263⇒ (LPG), S/N B024D-2268⇒ (GASOLINE)	4-132

**SECTION 1
FRAME**

DESCRIPTION	PAGE
COUNTERWEIGHT	1-8
COWL AND FLOOR PLATES	1-10
FORK.....	1-38
FULL SUSPENSION SEAT	
EUROPEAN OPTION	
SHEET 1 OF 2	1-30
SHEET 2 OF 2	1-32
SHEET 1 OF 2	
S/N B024D-07019Y⇒	1-22
SHEET 2 OF 2	
S/N B024D-07019Y⇒	1-26
HOOD.....	1-6
LABELS.....	1-3
LOAD BACKREST EXTENSION.....	1-36
OVERHEAD GUARD.....	1-34
SEAT	
STANDARD WITH OPERATOR RESTRAINT	
GASOLINE AND DIESEL.....	1-18
LPG	1-14
SUSPENSION WITH OPERATOR RESTRAINT	
GASOLINE AND DIESEL	
⇒S/N B024D-07018Y	1-20
LPG	
⇒S/N B024D-07018Y	1-16
SEAT MOUNTING	
FULL SUSPENSION	
S/N B024D-07019Y⇒	1-28

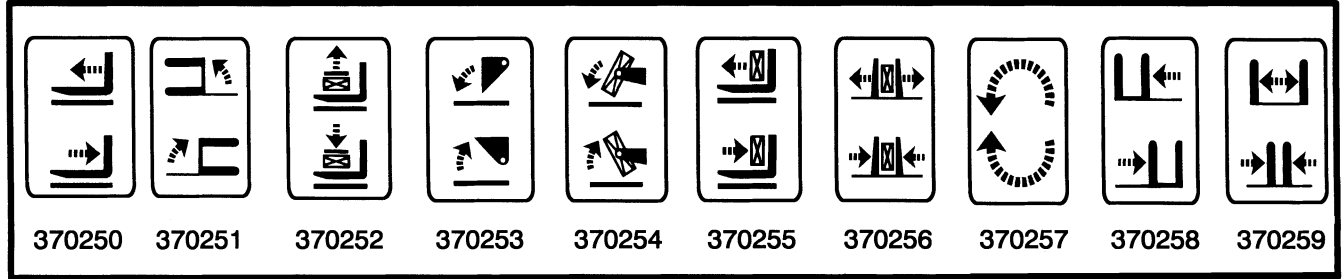
LABELS (Figure 1-1)



HP120048

LABELS

12



HP120049

ITEM	PART NO.	DESCRIPTION	QTY
1	380333	Label (Model 135).....	2
1	380334	Label (Model 155).....	2
1	380335	Label (Model 6.00).....	2
1	380336	Label (Model 7.00).....	2
2	1338178	Label (Mast Warning)	2
2	c 1339830	Label (Mast Warning)	2
3	c 1300094	Label (Fan Warning)	1
3	1345939	Label (Fan Warning)	2
4	1325271	Label (Fan Warning)	1
4	c 1345926	Label (Fan Warning)	1
5	1354165	Label (Anti-freeze)	1
6	1308608	Floormat	1
7	2034459	Label (Ether Warning).....	1
8	c 1316445	Label (Flammable LP Gasoline)	1
8	e 1320264	Label (Flammable LP Gasoline)	1
9	cg 1336592	Label (Operator Warning).....	1
9	ef 1336605	Label (Operator Warning).....	1
9	cf 1366725	Label (Operator Warning).....	1
10	ef 1330917	Label (Operator Restraint).....	2
10	cg 1335143	Label (Tip Over Warning)	2
10	cf 1359588	Label (Operator Restraint).....	2
11	1344132	Label (Hyster)	2
11	1345836	Label (Hyster) (Optional)	2
12	370250	Label (Auxiliary Function - Reach)	1
12	370251	Label (Auxiliary Function - Swing)	1
12	370252	Label (Auxiliary Function - Stabilizer)	1
12	370253	Label (Auxiliary Function - Dump/Scoop)	1
12	370254	Label (Auxiliary Function - Upender)	1
12	370255	Label (Auxiliary Function - Push/Pull).....	1
12	370256	Label (Auxiliary Function - Clamp)	1
12	370257	Label (Auxiliary Function - Rotate)	1
12	370258	Label (Auxiliary Function - Side-Shift)	1
12	370259	Label (Auxiliary Function - Fork Spreader).....	1
13	1335146	Label (Park Brake Warning).....	1
13	c 1357001	Label (Park Brake Warning).....	1
14	369573	Label (Lift/Tilt).....	1
15	1330920	Label (No Riders)	2
15	c 1339828	Label (No Riders)	2

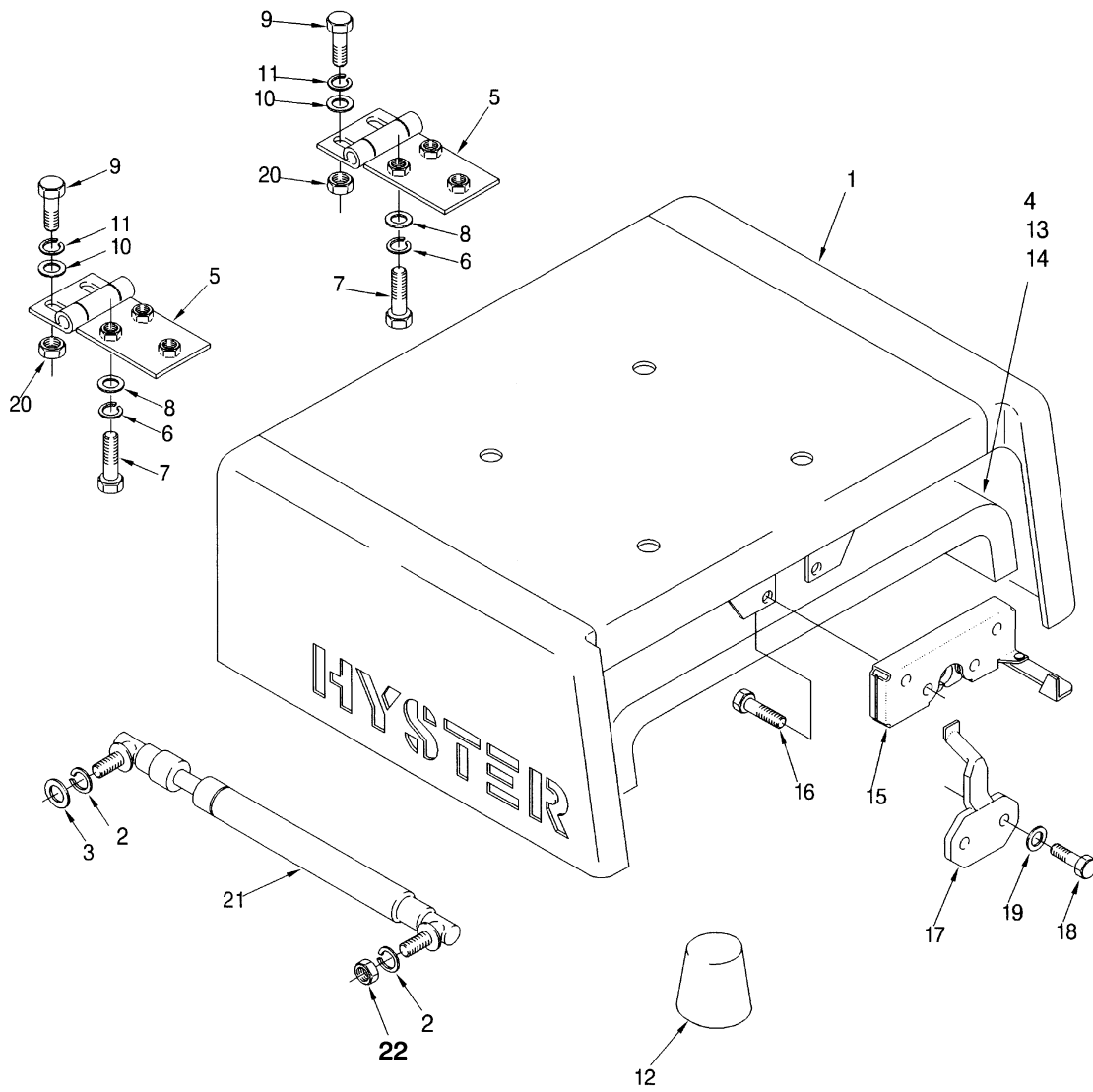
LABELS

ITEM	PART NO.	DESCRIPTION	QTY
16	1330919	Label (Mast Warning)	1
16	c 1343276	Label (Mast Warning)	1
17	h 1345998	Label (EFI)	2
18	389694	Cover (Nameplate)	1
19	170658	Rivet (Nameplate Cover)	4
20	1346853	Label (XL2)	2
21	1501259	Label (LPG Tank).....	1
22	170658	Rivet.....	2
22	340044	Gripnail (Optional)	2
23	i 1385099	Label (Hydraulic Oil Fill) (EEC).....	1
24	i 1385101	Label (Locking Hood Latch) (EEC)	1
25	acd 1503887	Label (Noise Level)	1
25	bcd 1503884	Label (Noise Level)	1
	996235	Label Kit (Includes Items 2-4, 6-10, 13-16)	1

FOOTNOTES:

- a** Diesel
- b** LP and Gasoline
- c** Non-U.S. (English)
- d** Not Illustrated
- e** U.S.
- f** With Operator Restraint
- g** Without Operator Restraint
- h** S/N B024D-2268 ⇒
- i** S/N B024D-4072 ⇒

HOOD (Figure 1-2)



HP120050

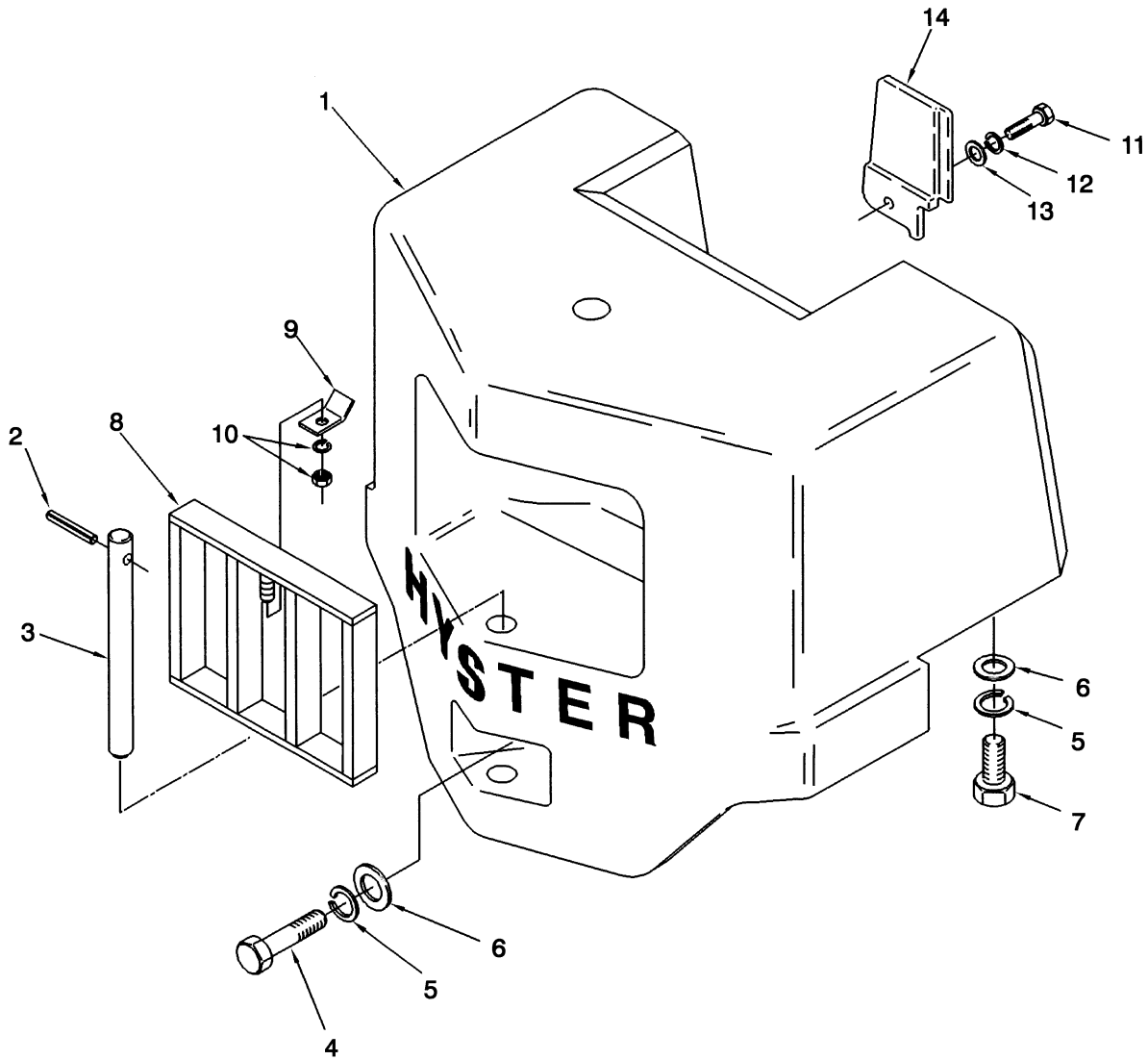
HOOD

ITEM	PART NO.	DESCRIPTION	QTY
1	a 1304973	Hood	1
1	b 1386222	Hood	1
2	292681	Lockwasher.....	2
3	320157	Washer	2
4	353191	Tape (54.9 m [180 ft.]	AR
5	1331039	Hinge	2
6	292681	Lockwasher.....	6
7	136681	Capscrew.....	6
8	1300117	Washer	6
9	c 136681	Capscrew.....	4
10	320157	Washer	4
11	c 292681	Lockwasher.....	4
12	1320610	Bumper	2
13	1456793	Hood Liner	1
14	1304971	Fastener.....	13
15	364857	Latch	1
16	199563	Capscrew.....	4
17	364861	Plate	1
18	302334	Capscrew.....	2
19	320160	Washer	2
20	239503	Nut	4
21	353021	Gas Spring.....	1
22	303117	Nut	1

FOOTNOTES:

- a ⇒ S/N B024D-4071
b S/N B024D-4072 ⇒
c ⇒ S/N PENDING PER ECN 63408

COUNTERWEIGHT (Figure 1-3)

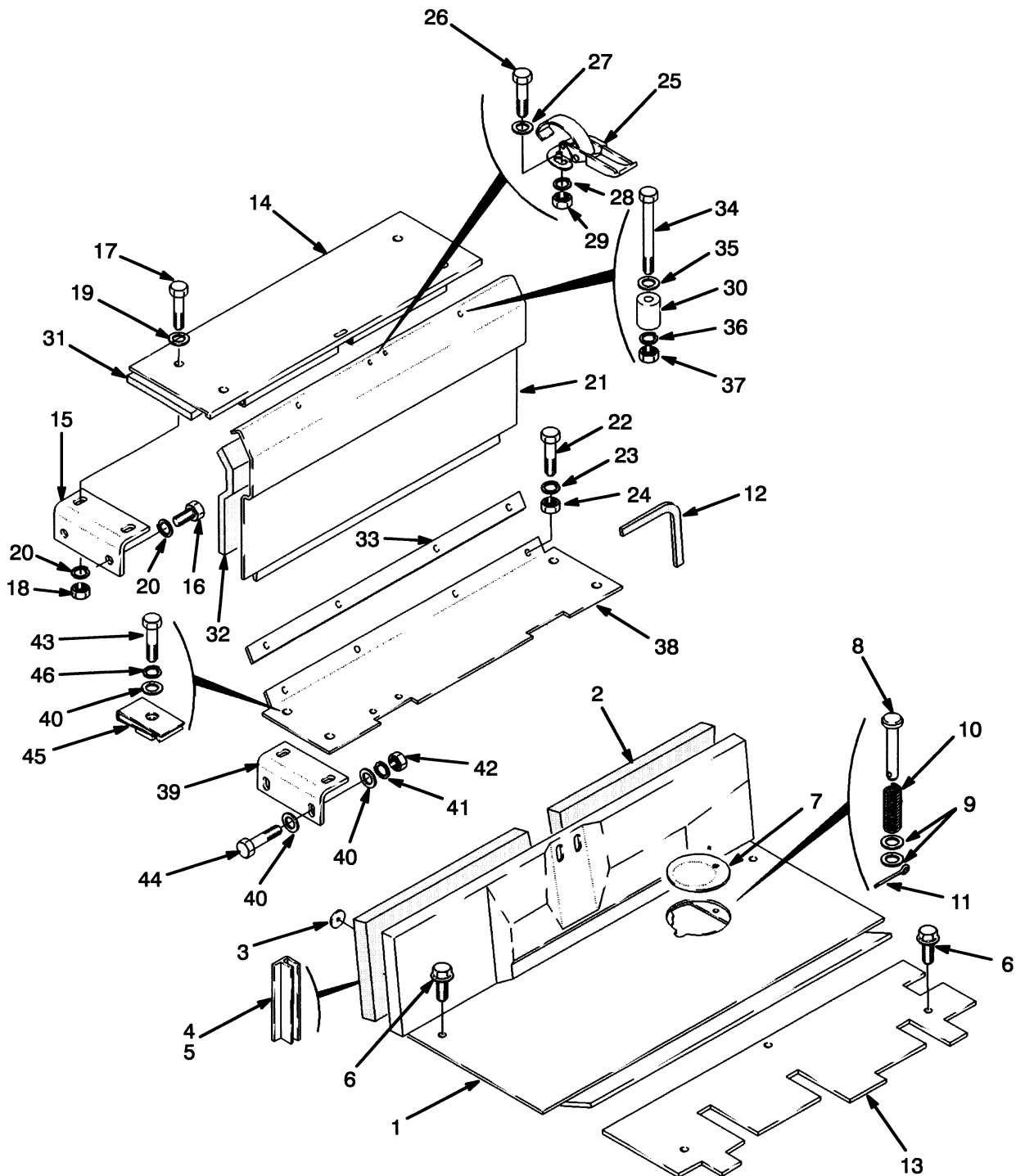


HP120051

COUNTERWEIGHT**KEY:****A: S135XL (S6.00XL)****B: S155XL (S7.00XL)**

ITEM	PART NO.	DESCRIPTION	QTY	
			A	B
1	360138	Counterweight	1	..
1	360139	Counterweight	1
2	302492	Pin	1	1
3	387473	Tow Pin	1	1
4	17395	Capscrew.....	1	1
5	15168	Lockwasher.....	3	3
6	149531	Washer	3	3
7	221100	Capscrew.....	2	2
8	1320109	Grill	1	1
9	270405	Bracket.....	1	1
10	264144	Nut	1	1
10	320182	Washer	1	1
11	287860	Capscrew.....	1	1
12	292682	Lockwasher.....	1	1
13	320160	Washer	1	1
14	385166	Cover	1	1

COWL AND FLOOR PLATES (Figure 1-4)



HP120052

COWL AND FLOOR PLATES

ITEM	PART NO.	DESCRIPTION	QTY
1	1303142	Floorplate.....	1
2	364926	Liner.....	1
3	246788	Washer	6
4	353204	Trim	AR
5	288394	Sealant	AR
6	1315402	Screw.....	5
7	313815	Plate	1
7	352939	Cover	1
8	177590	Rod End Pin	1
9	320157	Washer	2
10	137122	Spring	1
11	15212	Cotter Pin.....	1
12	288762	Tape.....	AR
13	bd 1303175	Floorplate.....	1
13	aef 1346730	Floorplate.....	1
13	bef 1346731	Floorplate.....	1
13	bc 1467733	Floorplate.....	1
13	ac 1467734	Floorplate.....	1
13	ad 388937	Floorplate.....	1
14	1303187	Cover	1
15	1308607	Bracket.....	2
16	292514	Capscrew.....	4
17	136985	Capscrew.....	4
18	136692	Nut	4
19	320160	Washer	AR
20	292682	Lockwasher.....	8
21	360174	Door	1
22	296161	Capscrew.....	4
23	292680	Lockwasher.....	4
24	136687	Nut	4
25	1303185	Latch	1
26	296152	Capscrew.....	2
27	320155	Washer	2
28	292679	Lockwasher.....	2
29	292668	Nut	2
30	1303149	Stop	2
31	1303189	Liner (Top)	1
32	1303190	Liner (Door)	1
33	1303184	Spacer	1
34	18126	Capscrew.....	2
35	15127	Washer	2
36	15154	Lockwasher.....	2
37	15054	Nut	2
38	360597	Plate	1
39	360596	Bracket.....	3
40	320160	Washer	12
41	292682	Lockwasher.....	4
42	136692	Nut	4
43	16805	Capscrew.....	4
44	292517	Capscrew.....	4

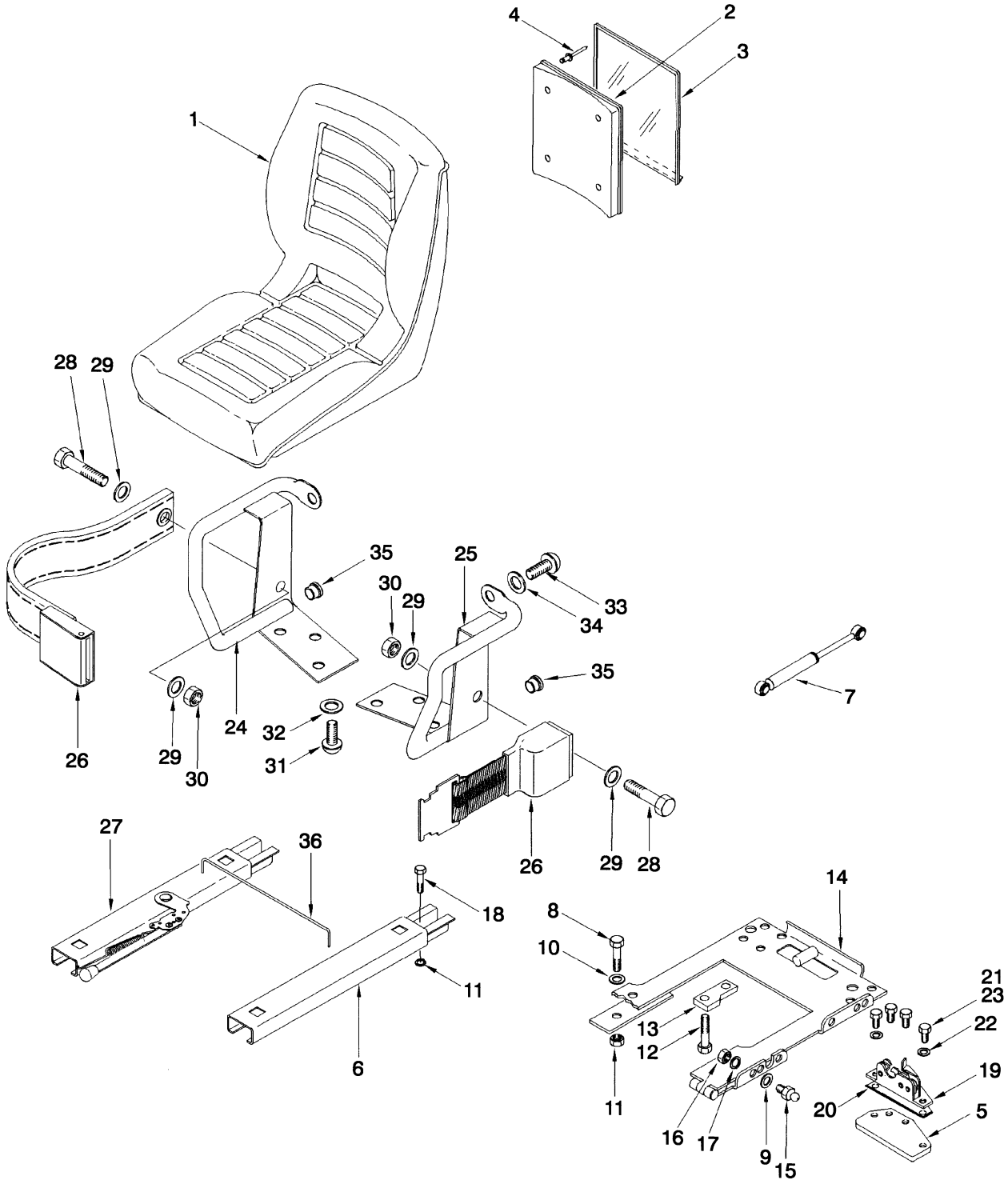
COWL AND FLOOR PLATES

ITEM	PART NO.	DESCRIPTION	QTY
45	269200	Nut	4
46	15156	Lockwasher.....	4

FOOTNOTES:

- a Oil Clutch
- b Powershift
- c S/N B024D-06444X ⇒
- d ⇒ S/N B024D-2456
- e S/N B024D-2457 ⇒
- f S/N B024D-2457 ⇔ S/N B024D-06443X

SEAT (Figure 1-5) STANDARD WITH OPERATOR RESTRAINT LPG

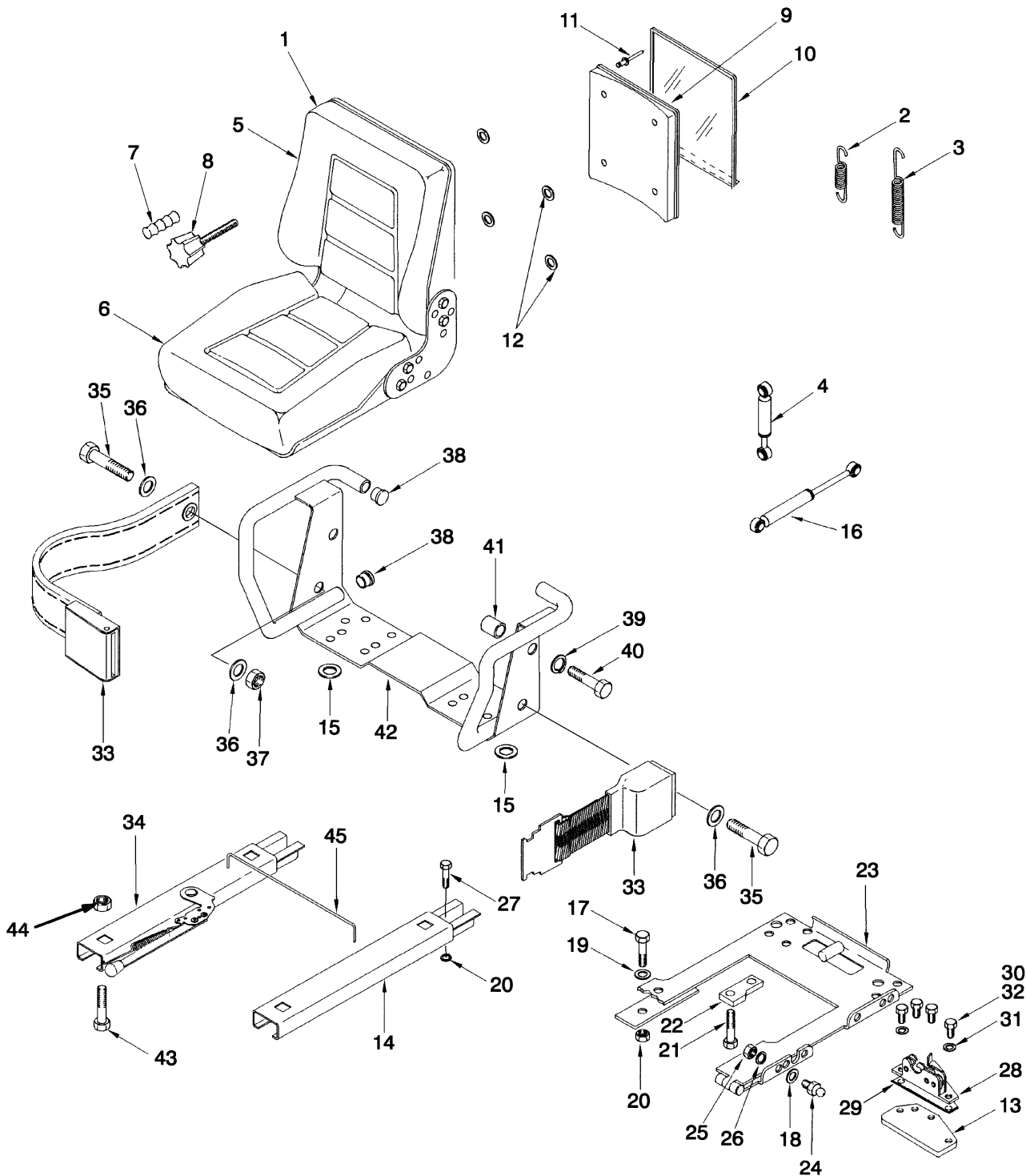


HP120429

**SEAT
STANDARD WITH OPERATOR RESTRAINT
LPG**

ITEM	PART NO.	DESCRIPTION	QTY
1	364911	Seat	1
2	335988	Base	1
3	335991	Cover (Information Case)	1
4	222029	Rivet.....	4
5	1346321	Plate	1
6	1300108	Seat Rail	1
7	1377992	Gas Spring.....	1
8	16374	Capscrew.....	4
9	320157	Washer	2
10	15175	Washer	4
11	145639	Nut.....	8
12	309637	Screw.....	4
13	306187	Bumper	2
14	1315420	Hinge	1
15	379190	Ball Stud	2
16	329069	Nut.....	2
17	292681	Lockwasher.....	2
18	16374	Capscrew.....	4
19	1304957	Latch.....	1
20	364940	Shim	3
21	221418	Capscrew.....	4
22	15127	Washer	2
23	251099	Adhesive.....	AR
24	364807	Hip Restraint (RH)	1
25	364808	Hip Restraint (LH).....	1
26	1374750	Seat Belt	1
27	383116	Seat Rail	1
28	379199	Capscrew.....	2
29	379697	Washer	4
30	379698	Nut.....	2
31	18727	Capscrew.....	4
32	18515	Washer	4
33	379197	Capscrew.....	2
34	379198	Washer	2
35	364854	Plug	2
36	1300107	Rod.....	1

SEAT (Figure 1-6) SUSPENSION WITH OPERATOR RESTRAINT LPG (⇒S/N B024D-07018Y)



HP120053

SEAT
SUSPENSION WITH OPERATOR RESTRAINT
LPG
(⇒S/N B024D-07018Y)

ITEM	PART NO.	DESCRIPTION	QTY
1	1345826	Seat	1
2	326364	Spring	2
3	326363	Spring	1
4	326978	Shock Absorber	1
5	326361	Back Cushion (Vinyl) (Back)	1
6	326360	Seat Pan	1
7	326362	Knob	1
8	326365	Spindle (Adjuster)	1
9	335989	Tube (Information Case)	1
10	335991	Cover (Information Case)	1
11	222030	Rivet	4
12	1326337	Spacer	4
13	1346321	Plate	1
14	1300108	Seat Rail	1
15	1334790	Washer	4
16	380320	Gas Spring	1
17	16374	Capscrew	4
18	320157	Washer	4
19	15175	Washer	4
20	145639	Nut	4
21	309637	Screw	4
22	306187	Bumper	2
23	1315420	Hinge	1
24	379190	Ball Stud	2
25	329069	Nut	2
26	292681	Lockwasher	2
27	16374	Capscrew	4
28	1304957	Latch	1
29	364940	Shim	3
30	221418	Capscrew	4
31	15127	Washer	2
32	251099	Adhesive	AR
33	1374750	Seat Belt	1
34	383116	Seat Rail	1
35	379199	Capscrew	2
36	379697	Washer	4
37	379698	Nut	2
38	364854	Plug	4
39	379675	Washer	2
40	379674	Capscrew	2
41	364848	Spacer	2
42	364847	Restraint	1
43	18727	Capscrew	4
44	145639	Nut	4
45	1300107	Rod	1



Suggest:

For more complete manuals. Please go to the home page.

<https://www.ebooklibonline.com>

If the above button click is invalid. Please download this document first, and then click the above link to download the complete manual.

Thank you so much for reading

**SEAT
STANDARD WITH OPERATOR RESTRAINT
GASOLINE AND DIESEL**

ITEM	PART NO.	DESCRIPTION	QTY
1	364911	Seat	1
2	335988	Base	1
3	335991	Cover (Information Case)	1
4	222029	Rivet.....	4
5	145639	Nut	4
5	15175	Washer	4
6	16374	Capscrew.....	4
7	178598	Capscrew.....	4
8	15155	Lockwasher.....	4
9	1307737	Fastener.....	4
10	1300108	Seat Rail	1
11	1300107	Rod	1
12	383116	Seat Rail	1
13	353731	Plate	2
14	186261	Capscrew.....	4
15	1374750	Seat Belt.....	1
16	364807	Hip Restraint (RH)	1
17	364808	Hip Restraint (LH).....	1
18	379199	Capscrew.....	2
19	379697	Washer	4
20	379698	Nut	2
21	18727	Capscrew.....	4
22	18515	Washer	4
23	379197	Capscrew.....	2
24	379198	Washer	2
25	364854	Plug	2

<https://www.ebooklibonline.com>

Hello dear friend!

Thank you very much for reading.

Enter the link into your browser.

The full manual is available for immediate download.

<https://www.ebooklibonline.com>