

PARTS MANUAL

YARD MASTER

**HR45-48EC
(A228)**

CUSTOMER EDITION

HYSTER

SECTIONS

1	FRAME
2	SINGLE FIXED CABIN
3	ENGINE(S)
4	ELECTRICAL SYSTEM
5	TRANSMISSION
6	DRIVE AXLE
7	STEERING SYSTEM
8	BRAKE SYSTEM
9	HYDRAULIC SYSTEM
10	BOOM
11	ATTACHMENTS
12	OPTIONS
13	NUMERICAL INDEX

TABLE OF CONTENTS

DESCRIPTION	PAGE
A	
AIR CONDITIONER	12-4
AIR FILTER.....	3-8
ANTI-TIPPING SWITCH.....	7-18
B	
BATTERY.....	4-28
BOOM CABLE SUPPORT	
HR-48-EC	10-32
BOOM HEAD.....	10-28
BRAKE ACCUMULATOR	8-14
BRAKE CIRCUIT	
S/N A228-01501↔S/N A228-01504	8-2
S/N A228-1505⇒.....	8-4
BRAKE FILTER	8-13
BRAKE OIL TANK	8-15
BRAKE PRESSURE SENSOR	8-12
BRAKE VALVE	
S/N A228-01501↔S/N A228-01509	8-10
S/N A228-01510⇒.....	8-11
BUMPERS.....	11-6
C	
CABIN	
S/N A228-01501↔S/N A228-01509	2-8
S/N A228-01510⇒.....	2-12
CABIN DOOR	
S/N A228-01501↔S/N A228-01509	2-22
S/N A228-01510⇒.....	2-24
CABIN SUPPORT	
S/N A228-01501↔S/N A228-01509	2-2
S/N A228-01510⇒.....	2-4
CLUTCH	
FORWARD AND SECOND.....	5-16
REVERSE AND FIRST	5-12
THIRD.....	5-20
CONSOLE	
RIGHT HAND	
S/N A228-01501↔S/N A228-01509	4-16
S/N A228-01510⇒.....	4-18
CONTROL VALVE ATTACHING PARTS.....	9-16
COOLING	3-10
BRAKE OIL	9-4
HYDRAULIC OIL	9-2
COUNTERWEIGHT	1-8
COWLING	1-7
CYLINDER ATTACHING PARTS	
HR-45-EC	10-18
HR-48-EC	10-34

<https://www.ebooklibonline.com>

Hello dear friend!

Thank you very much for reading.

Enter the link into your browser.

The full manual is available for immediate download.

<https://www.ebooklibonline.com>

TABLE OF CONTENTS (Continued)

DESCRIPTION	PAGE
D	
DAMPENING CYLINDER.....	10-43
DAMPENING CYLINDER ATTACHING PARTS	10-38
DASHBOARD	
RIGHT HAND	
S/N A228-01501⇔S/N A228-01509	4-20
DASHBOARD CONTROL	
S/N A228-01501⇔S/N A228-01509	4-12
DASHBOARD FRAME	
S/N A228-01501⇔S/N A228-01509	2-18
S/N A228-01510⇒.....	2-20
DECALS	12-8
DERRICKING CYLINDER.....	10-42
DERRICKING CYLINDER ASSEMBLY	10-36
DERRICKING CYLINDER WITH BEAM	10-40
DIFFERENTIAL.....	6-4
DIPSTICK TUBE	5-39
DRIVE AXLE	6-2
E	
ELECTRICAL CIRCUIT	
HR-45-EC	10-12
HR-48-EC	10-20
ELECTRICAL CONTROL.....	5-44
ELECTRO VALVE ASSEMBLY.....	9-18
ELECTRO VALVE ATTACHING PARTS	9-20
ELECTRO VALVE PARK BRAKE	
S/N A228-01510⇒.....	9-24
END BOOM	
HR-45-EC	10-14
HR-48-EC	10-24
END BOOM CABLE SUPPORT	
HR-48-EC	
S/N A228-01501⇔S/N A228-01509	10-30
ENGINE AND ATTACHING PARTS	3-4
EXHAUST.....	3-7
EXTENSION CYLINDER AND ATTACHING PARTS.....	11-24
F	
FIRE EXTINGUISHER	12-3
FLOOR PLATES.....	2-6
FRAME.....	1-2
FUEL CIRCUIT.....	3-13
FUEL TANK.....	3-12
FUSE PLATE	
S/N A228-01501⇔S/N A228-01509	4-24
S/N A228-01510⇒.....	4-26

TABLE OF CONTENTS (Continued)

DESCRIPTION	PAGE
H	
HAND PUMP	7-6
S/N A228-01510⇒	7-8
HEATER	
S/N A228-01501⇔S/N A228-01509	2-42
HOOD AND FENDERS	1-4
HORN	4-8
HYDRAULIC CIRCUIT	
HR-45-EC	10-6
HR-48-EC	10-2
HYDRAULIC CIRCUIT CONVERTER	5-2
HYDRAULIC FILTER	9-27
HYDRAULIC LIFTING BLOCK	9-26
HYDRAULIC LIFTING JACK	12-6
HYDRAULIC LINES	5-40
HYDRAULIC OIL TANK	9-30
HYDRAULIC SPREADER CONNECTION	
HR-45-EC	11-10
HR-48-EC	11-12
HYDRAULIC STEERING CIRCUIT	7-11
HYDRAULIC TANK CIRCUIT	9-28
HYDRAULIC TUBING	
HR-48-EC	10-10
I	
INCHING VALVE	5-34
INDICATOR LIGHT ASSEMBLY	11-35
INDUCTION TRANSMITTER	5-38
INPUT SHAFT	5-8
INSTRUMENT PANEL	
S/N A228-01510⇒	4-14
INTERMEDIATE BOOM	
HR-48-EC	10-22
J	
JOYSTICK	
S/N A228-01501⇔S/N A228-01509	2-35
S/N A228-01510⇒	2-36
JOYSTICK ATTACHING PARTS	
S/N A228-01501⇔S/N A228-01509	2-34
L	
LEAK OIL CIRCUIT	9-8
LIFTING CIRCUIT	9-10
LIGHTS	4-6
LINER	
INTERIOR COVERS	
S/N A228-01510⇒	2-16
S/N A228-01501⇔S/N A228-01509	2-15

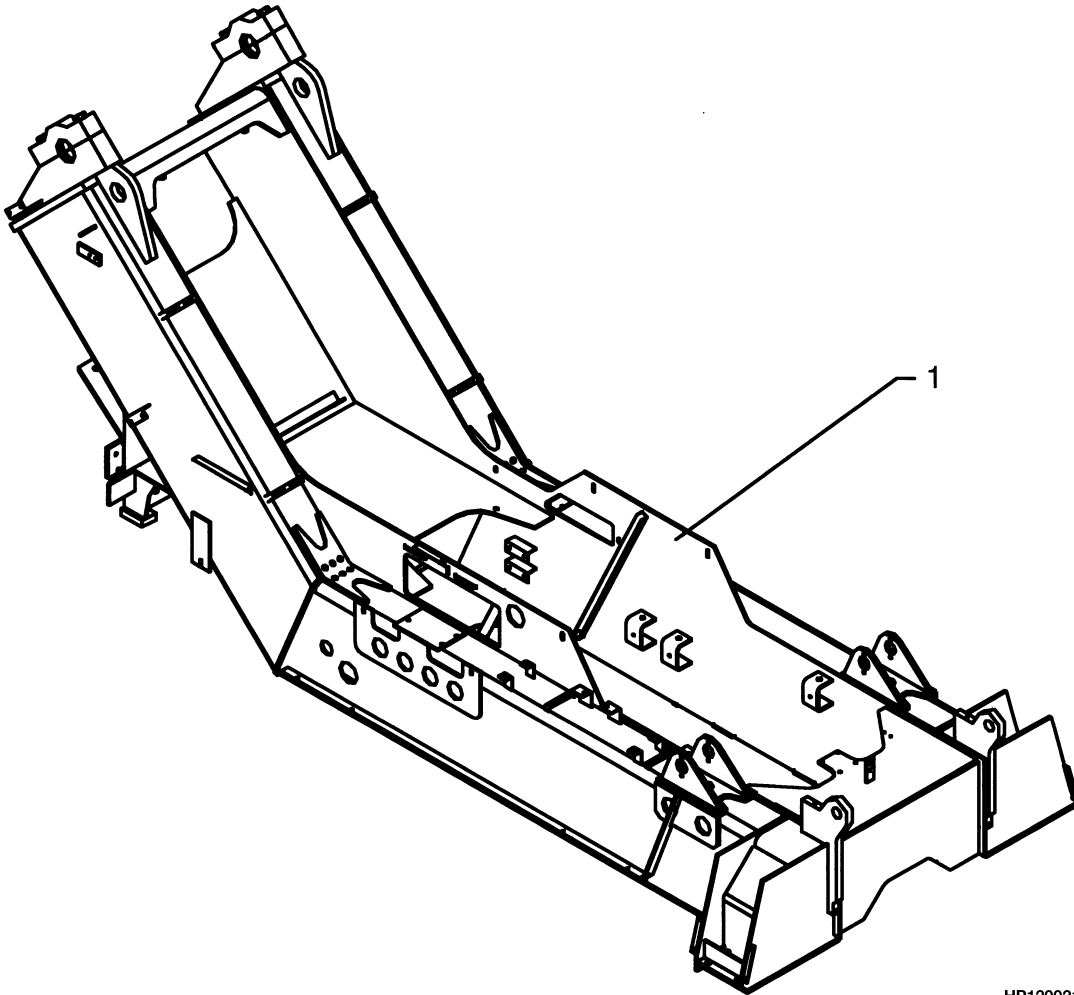
TABLE OF CONTENTS (Continued)

DESCRIPTION	PAGE
M	
MAIN BOOM.....	10-26
MAIN BOOM CABLE SUPPORT	
HR-45-EC	10-16
MAIN FRAME	11-2
MAIN VALVE.....	11-20
O	
OUTPUT SHAFT	5-23
P	
PARK BRAKE	5-42
PARK BRAKE CIRCUIT	8-18
PARK BRAKE CYLINDER.....	8-8
PARK BRAKE LEVER	8-21
PARK BRAKE PRESSURE VALVE	8-22
PEDALS	
S/N A228-01501↔S/N A228-01509	2-38
S/N A228-01510⇒.....	2-40
PENDULAR TWIST LOCK	
S/N A228-01501↔S/N A228-01509	11-26
S/N A228-01510⇒.....	11-28
PLANETARY DRIVE.....	6-6
POWER TAKE-OFF.....	5-24
POWER TAKE-OFF COVER	5-25
PRESSURE REGULATOR.....	5-31
PRESSURE SWITCH.....	9-6
R	
RELAY PLATE	
S/N A228-01501↔S/N A228-01509	4-21
S/N A228-01510⇒.....	4-22
RETURN CIRCUIT	9-14
ROTATOR ASSEMBLY	11-22
ROTATOR MOTOR	11-14
ROTATOR VALVE	11-18
S	
SEAT	
S/N A228-01510⇒.....	2-32
SEAT ASSEMBLY	
S/N A228-01501↔S/N A228-01509	2-30
SERVICE BRAKE.....	8-6
SIDE-SHIFT CYLINDER	11-16
SPEED SENSOR	5-36
STEERING AXLE	7-14
STEERING AXLE ASSEMBLY	7-12
STEERING COLUMN.....	7-2
S/N A228-01510⇒.....	7-4
STEERING CYLINDER.....	7-10
STOP ASSEMBLY	11-8

TABLE OF CONTENTS (Continued)

DESCRIPTION	PAGE
T	
TIE ROD PIN	7-16
TIRE AND WHEEL	12-2
TRANSMISSION ATTACHING PARTS	5-11 5-4
TRANSMISSION FILTER	5-32
TRANSMISSION HOUSING	5-10
TRANSMISSION VALVE	5-28
TRANSMISSION VALVE ATTACHING PARTS	5-26
TWIST LOCK	
S/N A228-01501↔S/N A228-01509	11-30
S/N A228-01510⇒	11-32
TWIST LOCK CYLINDER	11-34
U	
UNIVERSAL SHAFT	6-8
V	
VENTILATION	
S/N A228-01510⇒	2-44
W	
WEAR PADS	11-4
WINDOW	
REAR	
S/N A228-01501↔S/N A228-01509	2-26
S/N A228-01510⇒	2-28
WIRE HARNESS	
ENGINE	3-2
MAIN	
S/N A228-01501↔S/N A228-01509	4-2
S/N A228-01510⇒	4-4
S/N A228-01510⇒	1-10
WIRING ROOF PLATE	
S/N A228-01501↔S/N A228-01509	4-9
S/N A228-01510⇒	4-10

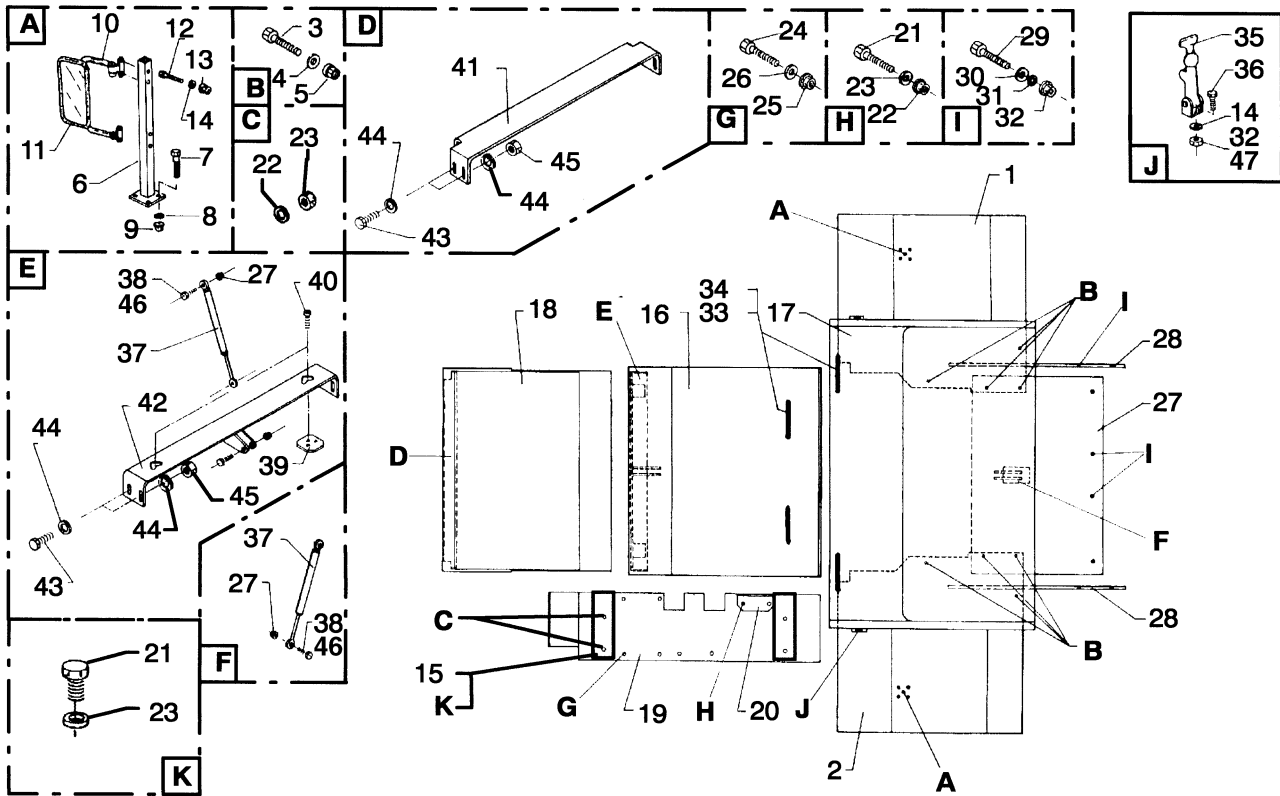
FRAME (Figure 1-1)



HP120021

ITEM	PART NO.	DESCRIPTION	QTY
1	1472154	Frame	1

HOOD AND FENDERS (Figure 1-2)



HP120022

HOOD AND FENDERS

ITEM	PART NO.	DESCRIPTION	QTY
1	1472155	Fender	1
2	1472157	Fender	1
3	1471127	Bolt	12
4	1472158	Washer	24
5	1468174	Nut	12
6	1472159	Support.....	2
7	1472165	Bolt	8
8	a 1468907	Washer	8
8	b 1469191	Washer	8
9	1470955	Nut	8
10	1472166	Support.....	2
11	1472167	Mirror	2
12	1472203	Bolt	8
13	1472204	Nut	8
14	a 1469191	Washer	10
15	1472205	Support.....	2
16	1472206	Cover	1
17	1472208	Cover	1
18	a 1472209	Cover	1
18	b 1519073	Cover	1
19	1472210	Cover	1
20	1472211	Plate	1
21	1468371	Nut	6
22	1468893	Nut	6
23	1469149	Washer	10
24	a 1468946	Bolt	4
24	b 1471127	Bolt	4
25	a 1470942	Nut	4
25	b 1468174	Nut	4
26	a 1469857	Washer	4
26	b 1472158	Washer	4
27	1468223	Nut	8
28	1472216	Baffle	2
29	287816	Capscrew.....	30
30	1468159	Washer	30
31	1472217	Washer	30
32	1468262	Nut	32
33	1472218	Handle	4
34	a 1469000	Bolt	8
34	b 1519074	Bolt	8
35	1472220	Lock	2
36	a 292501	Capscrew.....	2
36	b 1519075	Bolt	2
37	1472222	Gas Spring.....	2
38	a 1469692	Bolt	4
38	b 1519076	Axle.....	4
39	1472224	Plate	2
	a 1468138	Bolt (Includes Item).....	6
40	b 1473132	Bolt	6
41	a 1472225	Bracket.....	1

HOOD AND FENDERS

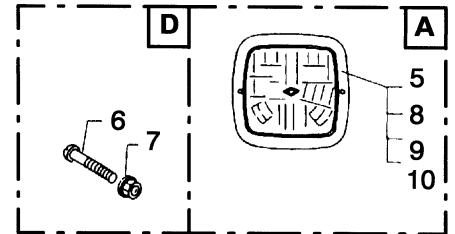
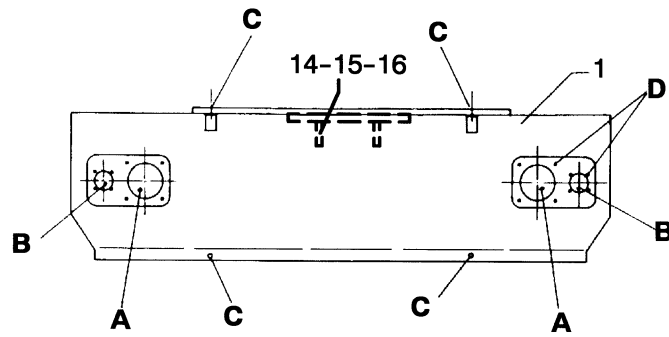
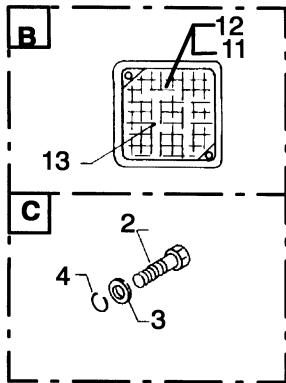
ITEM	PART NO.	DESCRIPTION	QTY
41	b 1519077	Cross Bar.....	1
42	1472226	Bracket.....	1
43	292545	Capscrew.....	8
44	1468952	Washer	16
45	1468941	Nut	8
46	b 1471900	Cotter Pin.....	8
47	b 1472285	Nut	8

FOOTNOTES:

a S/N A228-01501 ↔ S/N A228-01509

b S/N A228-01510 ⇒

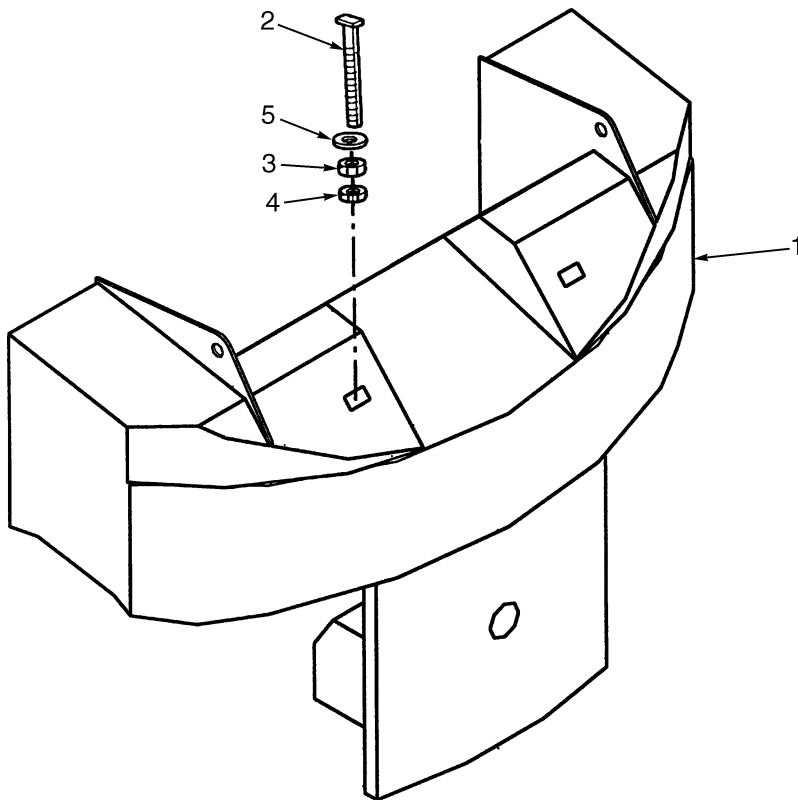
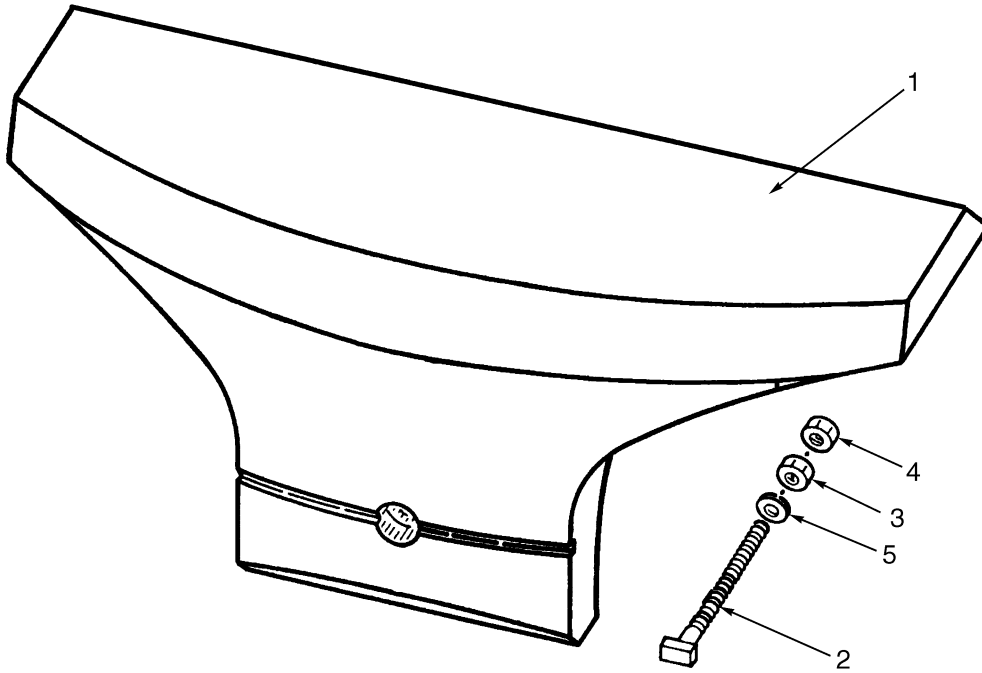
COWLING (Figure 1-3)



HP120023

ITEM	PART NO.	DESCRIPTION	QTY
1	1472231	Cowling	1
2	1472237	Bolt	4
3	1469857	Washer	4
4	1470358	Washer	4
5	1468911	Light.....	2
6	1468920	Bolt	12
7	1468921	Nut	12
8	1468912	Light.....	2
9	1468913	Lamp.....	2
10	1472258	Connector	2
11	1468915	Turn Signal.....	2
12	1472259	Light.....	2
13	1468916	Lamp.....	2
14	1472261	Fork.....	1
15	1469265	Bolt	4
16	1468223	Nut	4

COUNTERWEIGHT (Figure 1-4)



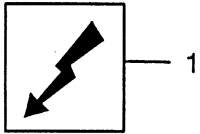
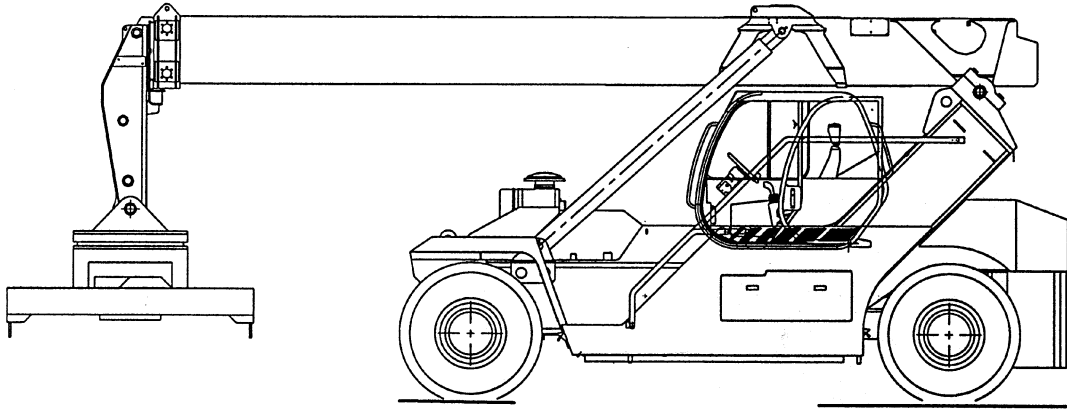
HP120024

COUNTERWEIGHT

ITEM	PART NO.	DESCRIPTION	QTY
1	a 1472271	Counterweight	1
1	b 1519084	Counterweight	1
2	1472270	Bolt	2
3	1468956	Nut	2
4	1468957	Nut	2
5	1468958	Washer	2

FOOTNOTES:**a** S/N A228-01501 ⇔ S/N A228-01509**b** S/N A228-01510 ⇒

WIRE HARNESS (Figure 1-5) (S/N A228-01510⇒)



HP120663

WIRE HARNESS
(S/N A228-01510⇒)

ITEM	PART NO.	DESCRIPTION	QTY
1	1519070	Wire Harness.....	1

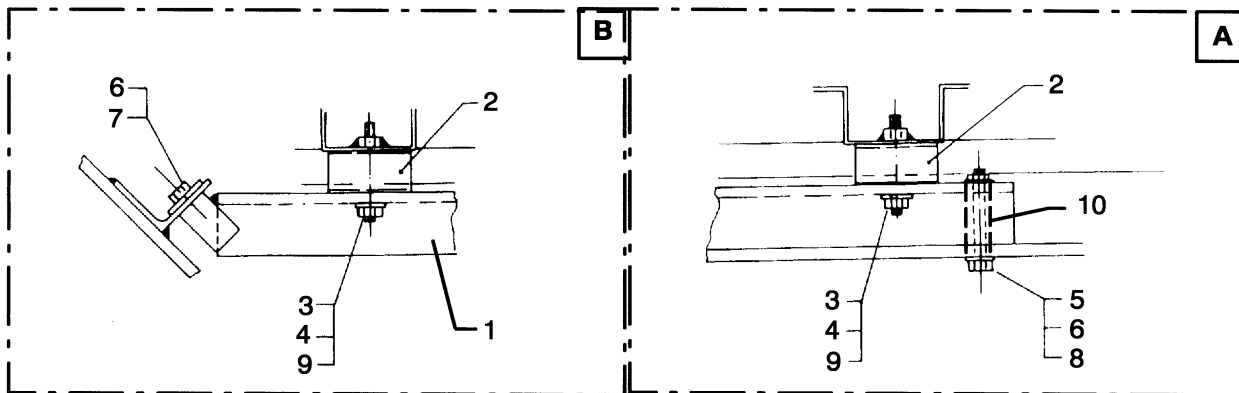
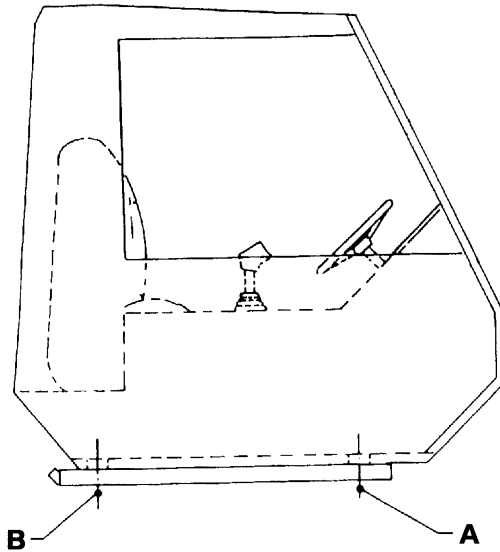
2

SINGLE FIXED CABIN

SECTION 2 SINGLE FIXED CABIN

DESCRIPTION	PAGE
CABIN	
S/N A228-01501↔S/N A228-01509	2-8
S/N A228-01510⇒	2-12
CABIN DOOR	
S/N A228-01501↔S/N A228-01509	2-22
S/N A228-01510⇒	2-24
CABIN SUPPORT	
S/N A228-01501↔S/N A228-01509	2-2
S/N A228-01510⇒	2-4
DASHBOARD FRAME	
S/N A228-01501↔S/N A228-01509	2-18
S/N A228-01510⇒	2-20
FLOOR PLATES	2-6
HEATER	
S/N A228-01501↔S/N A228-01509	2-42
JOYSTICK	
S/N A228-01501↔S/N A228-01509	2-35
S/N A228-01510⇒	2-36
JOYSTICK ATTACHING PARTS	
S/N A228-01501↔S/N A228-01509	2-34
LINER	
INTERIOR COVERS	
S/N A228-01510⇒	2-16
S/N A228-01501↔S/N A228-01509	2-15
PEDALS	
S/N A228-01501↔S/N A228-01509	2-38
S/N A228-01510⇒	2-40
SEAT	
S/N A228-01510⇒	2-32
SEAT ASSEMBLY	
S/N A228-01501↔S/N A228-01509	2-30
VENTILATION	
S/N A228-01510⇒	2-44
WINDOW	
REAR	
S/N A228-01501↔S/N A228-01509	2-26
S/N A228-01510⇒	2-28

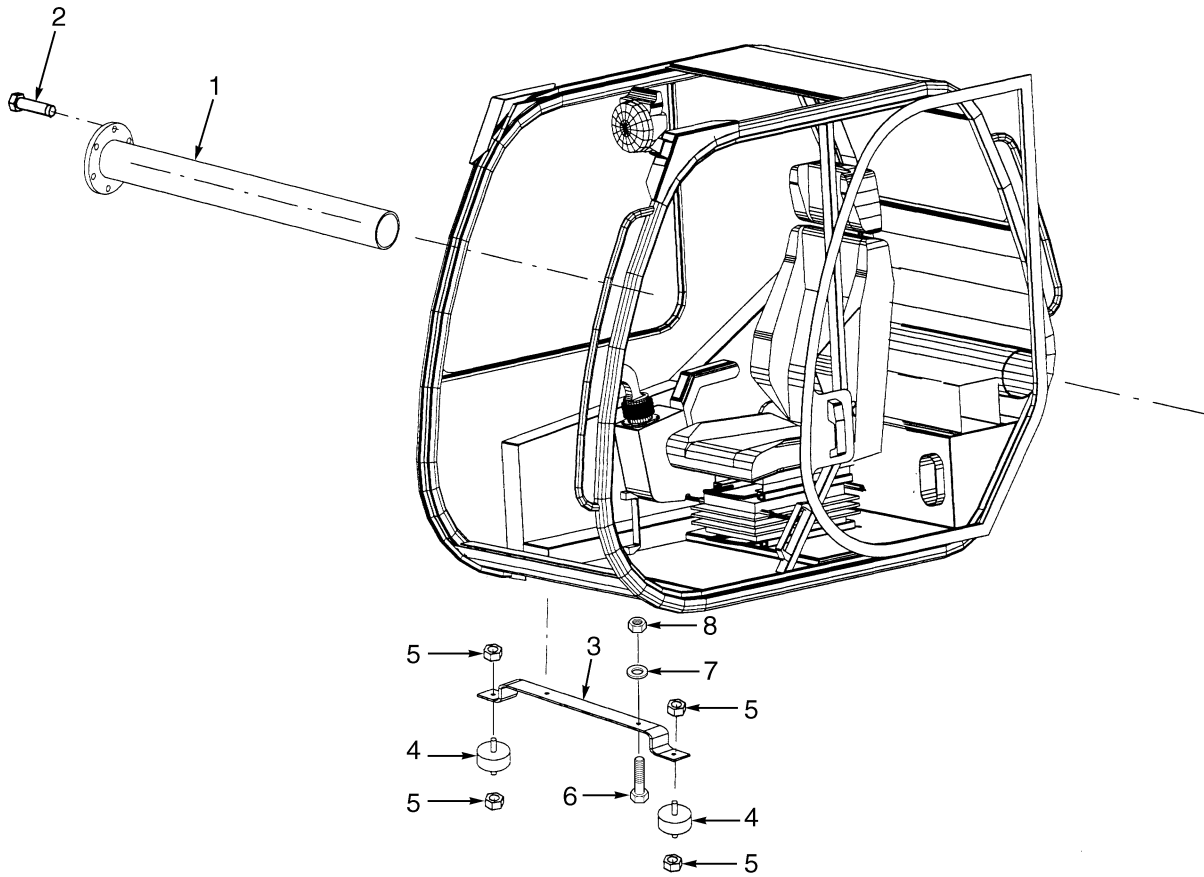
CABIN SUPPORT (Figure 2-1) (S/N A228-01501↔S/N A228-01509)



HP200000

ITEM	PART NO.	DESCRIPTION	QTY
1	1472290	Support.....	2
2	1472291	Support.....	4
3	1471101	Nut	4
4	1468952	Washer	4
5	1472292	Bolt	2
6	1472293	Washer	4
7	1468371	Nut	2
8	1470955	Nut	2
9	1471112	Washer	4
10	1472294	Tube.....	2

CABIN SUPPORT (Figure 2-2) (S/N A228-01510⇒)

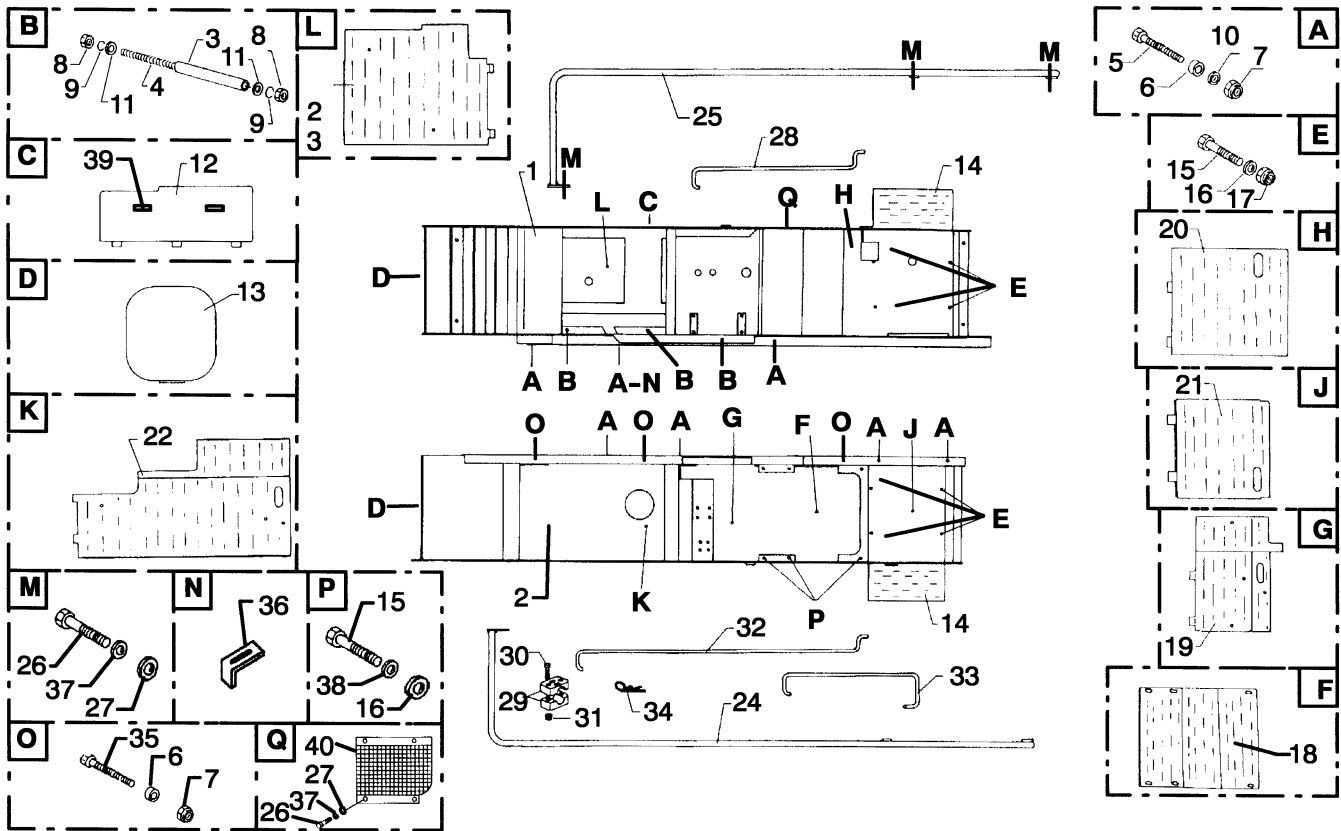


HP200076

CABIN SUPPORT
(S/N A228-01510⇒)

ITEM	PART NO.	DESCRIPTION	QTY
1	1519892	Support.....	1
2	1468212	Bolt	6
3	1519922	Support.....	1
4	1469803	Isolator.....	2
5	1470955	Nut	4
6	136985	Capscrew.....	2
7	1469074	Washer	2
8	1468893	Nut	2

FLOOR PLATES (Figure 2-3)



HP200001

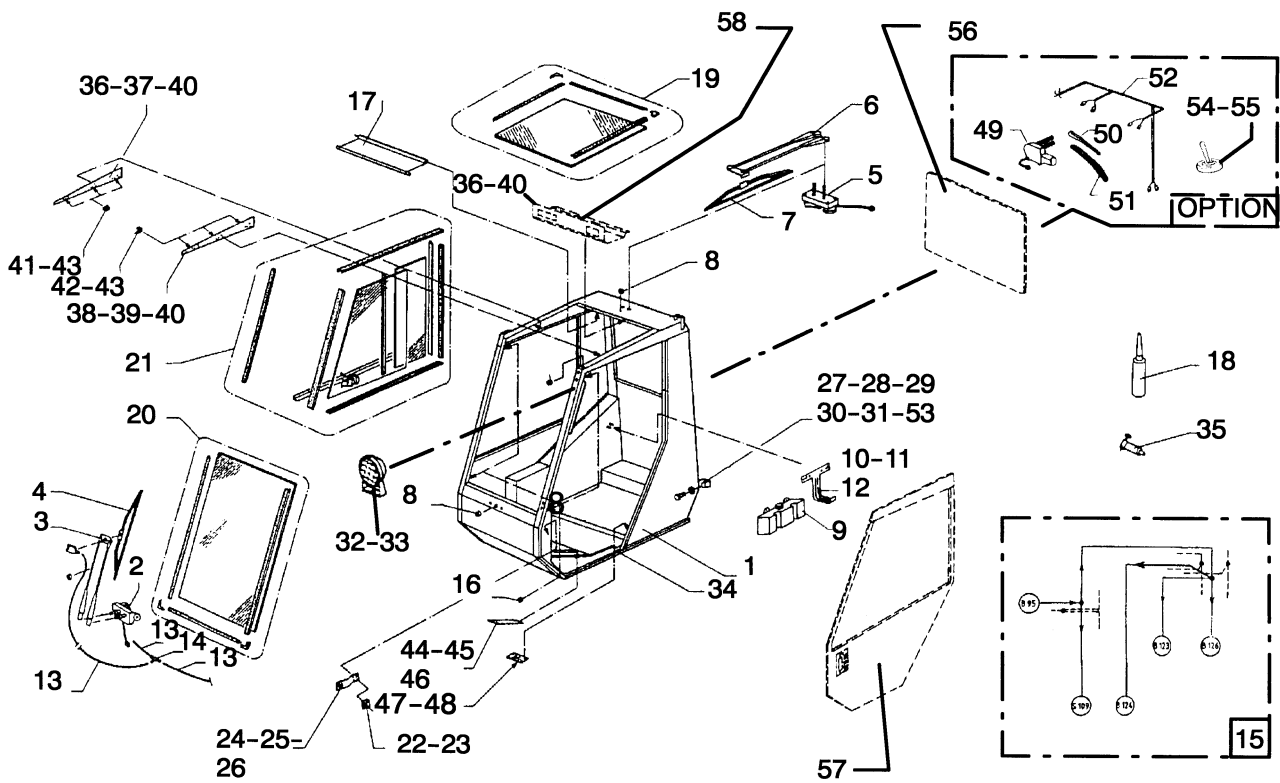
FLOOR PLATES

ITEM	PART NO.	DESCRIPTION	QTY
1	1472227	Box.....	1
2	1472228	Box.....	1
3	1472229	Spacer	3
4	1472230	Stud	3
5	1471897	Bolt	7
6	1472232	Washer	13
7	1468174	Nut	10
8	1471101	Nut	6
9	1471112	Washer	6
10	1468635	Washer	7
11	1472233	Washer	6
12	1472234	Door.....	1
13	1472235	Door.....	2
14	1472236	Step	2
15	1471127	Bolt	16
16	1472158	Washer	28
17	1468174	Nut	4
18	1472238	Step	1
19	1472239	Running Board.....	1
20	1472240	Running Board.....	1
21	1472242	Running Board.....	1
22	1472243	Plate	1
23	1472245	Plate	1
24	1472246	Plate	1
25	1472248	Plate	1
26	1468371	Nut	16
27	1469149	Washer	16
28	1472249	Plate	1
29	1468137	Bracket.....	3
30	1468130	Bolt	6
31	1468262	Nut	6
32	a 1472250	Plate	1
33	a 1472251	Plate	1
34	1472252	Cotter Pin.....	3
35	1472253	Bolt	3
36	1472254	Support.....	1
37	1468373	Washer	28
38	1470358	Washer	4
39	1472255	Plug	2
40	1472256	Grill	1

FOOTNOTES:

a S/N A228-01501⇔S/N A228-01509

CABIN (Figure 2-4) (S/N A228-01501↔S/N A228-01509)



HP200002



Suggest:

For more complete manuals. Please go to the home page.

<https://www.ebooklibonline.com>

If the above button click is invalid. Please download this document first, and then click the above link to download the complete manual.

Thank you so much for reading

CABIN

(S/N A228-01501↔S/N A228-01509)

ITEM	PART NO.	DESCRIPTION	QTY
1	1472296	Cab	1
2	1472297	Motor	1
3	1472298	Wiper Arm.....	1
4	1472299	Wiper Blade	1
5	1472300	Wiper Motor	1
6	1472301	Wiper Arm.....	1
7	1472302	Wiper Blade	1
8	1472303	Guide	3
9	1472304	Windshield Washer.....	1
10	1472305	Support.....	1
11	1472306	Nut	1
12	1469218	Washer	2
13	1472308	Hose	1
14	1472309	Fitting.....	1
15	1472310	Wire Harness.....	1
16	1472311	Guide	3
17	1472312	Cover	1
18	1472313	Seal	1
19	1472314	Glass	1
20	1472315	Glass	1
21	1472316	Window.....	1
22	1472317	Catch	1
23	1472318	Bolt	4
24	1472319	Bracket.....	1
25	1472320	Bolt	2
26	1472321	Washer	2
27	1472322	Lock	1
28	1472323	Bolt	1
29	1469218	Washer	1
30	1472306	Nut	1
31	1472326	Cover	1
32	1468374	Light.....	1
33	1468375	Bulb	1
34	1472327	Seal	1
35	1472328	Seal	1
36	1472329	Bolt	18
37	1472330	Plate	1
38	1472331	Plate	1
39	1469274	Bolt	2
40	1469078	Washer	15
41	1472332	Support.....	3
42	1472333	Support.....	3
43	1472334	Bolt	12
44	1472335	Plate	1
45	1472386	Nut	4
46	1472337	Bolt	4
47	1472338	Plate	1
48	1472339	Rivet.....	4
49	1472340	Wiper Motor	1
50	1472341	Wiper Arm.....	1
51	1472342	Wiper Blade	1

CABIN (S/N A228-01501↔S/N A228-01509)

ITEM	PART NO.	DESCRIPTION	QTY
52	1472343	Wire Harness	1
53	1472344	Spacer	1
54	1472345	Switch	1
55	1472346	Plate	1
56	Glass (Rear) (☞ Figure 2-12)	1
57	Cabin Door (☞ Figure 2-10)	1
58	Wiring Roof Plate (☞ Figure 4-5)	1

<https://www.ebooklibonline.com>

Hello dear friend!

Thank you very much for reading.

Enter the link into your browser.

The full manual is available for immediate download.

<https://www.ebooklibonline.com>