

PARTS MANUAL

REACHSTACKER

**RS45-27IH, -30CH RS46-30IH,
-33CH, -33IH, -36CH
(A222)**

CUSTOMER EDITION

HYSTER

SECTIONS

1	FRAME
2	ENGINE(S)
3	FUEL SYSTEM
4	ELECTRICAL SYSTEM
5	TRANSMISSION
6	DRIVE AXLE
7	STEERING SYSTEM
8	BRAKE SYSTEM
9	HYDRAULIC SYSTEM
10	BOOM
11	ROTATOR AND SPREADER
12	SPREADER ATTACHMENT
13	OPTIONS
14	NUMERICAL INDEX

TABLE OF CONTENTS

DESCRIPTION	PAGE
A	
ACCUMULATOR	
PISTON TYPE	8-10
ACTUATOR SECTION	
S/N A222E-01537X⇒	9-96
AIR FILTER	
TIER I ENGINE	
⇒S/N A222E-01536X	2-86
S/N A222E-01537X⇒	2-88
TIER II ENGINE	
S/N A222E-01563Z⇒ EXC. 1564-1565	2-90
AIR INTAKE CONNECTION	
TIER II ENGINE	2-82
AIR INTAKE MANIFOLD	
TIER I ENGINE	2-50
AIR OUTLET CONNECTION	
TIER II ENGINE	2-80
AIR TRANSFER CONNECTION	
TIER II ENGINE	2-78
ALTERNATOR AND MOUNTING	4-124
ANTI-CAVITATION VALVE	9-68
AXLE HOUSING	6-16
B	
BOOM ATTACHMENT	
EMPTY CONTAINER HANDLER	
SHEET 1 OF 2	
⇒S/N A222E-1532	4-86
SHEET 2 OF 2	
⇒S/N A222E-1532	4-88
BOOM HYDRAULIC	
⇒S/N A222E-01536X	9-16
BOOM TILT CYLINDER	
⇒S/N A222E-01532X	9-50
S/N A222E-01533X⇒	9-52
BOOM TILT CYLINDER MOUNT	9-48
BOOM WORKLIGHTS AND ROTATING BEACON	4-20
BREATHER PLUMBING	2-10
BUMPER ASSEMBLY	
WITHOUT POWERED PILE SLOPE AND POWER DAMPING	
SERIES 817-8761	12-72
BUMPERS	12-8
C	
CAB TILT	
RS45-30CH, RS45-27IH	
⇒S/N A222E-01562Z INC. 1564-1565	1-18
CAM FOLLOWER LEVER	
TIER II ENGINE	2-122
CAMSHAFT	
TIER II ENGINE	2-142

<https://www.ebooklibonline.com>

Hello dear friend!

Thank you very much for reading.

Enter the link into your browser.

The full manual is available for immediate download.

<https://www.ebooklibonline.com>

TABLE OF CONTENTS (Continued)

DESCRIPTION	PAGE
C (continued)	
CHAIN AND SUPPORT ATTACHMENT	
⇒S/N A222E-01536X.....	10-8
S/N A222E-01537X⇒.....	10-10
CLUTCH	
FORWARD.....	5-14
FOURTH SPEED.....	5-20
LOW SPEED.....	5-18
REVERSE AND 2ND SHAFT.....	5-10
THIRD SPEED.....	5-16
CONTROL BOX ASSEMBLY	
TIER II ENGINE	
S/N A222E-1563Z⇔S/N A222E-1577A.....	4-114
S/N A222E-1578A⇒.....	4-118
CONTROL LEVER	
⇒S/N A222E1531.....	4-24
CONTROL PANEL	
S/N A222E1532⇒.....	4-122
CONTROL SECTION	
⇒S/N A222E-01536X.....	9-84
CONTROL UNIT	
⇒S/N A222E-1532.....	4-22
CONTROL VALVE	
ELECTRONIC INCHING.....	5-30
HYDRAULIC INCHING.....	5-28
CONTROL VALVE AND ATTACHING PARTS	
⇒S/N A222E-01536X.....	9-80
S/N A222E-01537X⇒.....	9-92
CONVERTER HOUSING ATTACHMENT	
THREE SPEED.....	5-24
COOLANT HEATER STARTING AID	
TIER II ENGINE.....	2-84
COOLING	
⇒S/N A222E-01536X.....	2-92
TIER I ENGINE	
S/N A222E-01537X⇔S/N A222E-01562Z INC. 1564-1565.....	2-94
TIER II ENGINE	
S/N A222E-01563Z⇒ EXC. 1564-1565.....	2-96
CORROSION RESISTOR.....	2-68
COUNTERWEIGHT	
FABRICATED	
PENDING PER ECN 68415⇒.....	1-58
⇒PENDING PER ECN 68415.....	1-56
CRANKSHAFT	
TIER II ENGINE.....	2-119
CRANKSHAFT MAIN BEARINGS	
TIER II ENGINE.....	2-130
CYLINDER ASSEMBLY	
FOLDING CLAMPING	
INTERMODAL HANDLER.....	12-43
CYLINDER BLOCK	

TABLE OF CONTENTS (Continued)

DESCRIPTION	PAGE
C (continued)	
TIER II ENGINE	2-110
CYLINDER BLOCK PLUMBING	
TIER II ENGINE	2-131
CYLINDER HEAD	
TIER II ENGINE	2-112
CYLINDER LINER	
TIER II ENGINE	2-114
D	
DAMPING CYLINDER	
⇒S/N A222E-01532X	11-48
S/N A222E01533X⇒ S/N PENDING PER ECN 68374	11-50
WITHOUT POWERED PILE SLOPE AND POWER DAMPING	
SERIES 817-8761	12-85
DAMPING CYLINDER ATTACHING PARTS	11-46
DAMPING CYLINDER MOUNT	
WITHOUT POWERED PILE SLOPE AND POWER DAMPING	
SERIES 817-8761	12-84
DIFFERENTIAL AND CARRIER	
⇒S/N A222E-01536X	6-6
DIRECTIONAL VALVE	
⇒S/N A222E-01532X	11-32
DRIVE AXLE	
⇒S/N A222E-01536X	6-2
DRIVE AXLE AND CARRIER ASSEMBLY	
S/N A222E01537X⇒	6-10
DRIVE PULLEY	
AIR COMPRESSOR	2-6
WATER PUMP	2-8
DRIVE TIRE AND WHEEL	13-8
18.00 X 25 X 40 PLY PREMIUM	
RS45-30CH, RS45-27IH	13-4
18.00 X 33 X 32 PLY PREMIUM	
RS46-33CH, RS46-36CH, RS46-30IH, RS46-33IH	13-6
18.00 X 33 X 36 PLY	13-10
STANDARD	
RS45-30CH, RS45-27IH	13-2
DRIVE TRAIN	
FRONT	2-12
E	
ELECTRICAL ACCESSORIES	
TIER II ENGINE	4-128
ELECTRICAL SYSTEM	
CONTAINER HANDLER	12-24
INTERMODAL HANDLER	
SHEET 1 OF 2	12-64
SHEET 2 OF 2	12-66
TIER I ENGINE, WITH ELME ATTACHMENT	

TABLE OF CONTENTS (Continued)

DESCRIPTION	PAGE
E (continued)	
OPERATOR COMPARTMANT, SHEET 2 OF 2 S/N A222E-01537X⇒.....	4-100
OPERATOR COMPARTMENT, SHEET 1 OF 2 S/N A222E-01537X⇒.....	4-96
SHEET 1 OF 2 S/N A222E-01537X⇒.....	4-90
SHEET 2 OF 2 S/N A222E-01537X⇒.....	4-94
TIER II ENGINE, WITH ELME ATTACHMENT	
OPERATOR COMPARTMENT, SHEET 1 OF 2 S/N A222E-01563Z⇒ EXC. 1564-1565	4-110
OPERATOR COMPARTMENT, SHEET 2 OF 2 S/N A222E-01563Z⇒ EXC. 1564-1565	4-112
SHEET 1 OF 2 S/N A222E-01563Z⇒ EXC. 1564-1565	4-102
SHEET 2 OF 2 S/N A222E-01563Z⇒ EXC. 1564-1565	4-106
WITHOUT POWERED PILE SLOPE AND POWER DAMPING SERIES 817-8761.....	12-98
ELECTRONIC FOOT PEDAL MOUNT	
TIER II ENGINE S/N A222E-01563Z⇒ EXC. 1564-1565	3-34
ENGINE ASSEMBLY.....	2-4
ENGINE CONTROL SYSTEM	
TIER II ENGINE.....	2-140
ENGINE MOUNT.....	2-16
EXHAUST	
⇒S/N A222E-01536X.....	2-100
S/N A222E-01537X⇒.....	2-102
TIER I ENGINE	
S/N A222E-01538X↔S/N A222E-01562Z INC. 1564-1565.....	2-104
TIER II ENGINE	
S/N A222E-01563Z↔S/N A222E-01576A EXC. 1564-1565	2-106
S/N A222E-01577A⇒	2-108
EXHAUST CONNECTION	
TIER I ENGINE.....	2-72
EXHAUST MANIFOLD	
TIER I ENGINE.....	2-54
TIER II ENGINE.....	2-56
EXTENSION ATTACHMENT.....	11-12
EXTENSION CYLINDER ASSEMBLY	
WITHOUT POWERED PILE SLOPE AND POWER DAMPING SERIES 817-8761.....	12-82
EXTENSION CYLINDER BOOM	
⇒S/N A222E-01532X.....	10-12
S/N A222E-01533X⇒.....	10-14

TABLE OF CONTENTS (Continued)

DESCRIPTION	PAGE
F	
FAN	
TIER I ENGINE	2-22
TIER II ENGINE	2-24
FAN DRIVE	
TIER I ENGINE	2-18
TIER II ENGINE	2-20
FENDER AND RAIL	
S/N A222E-01517↔S/N A222E-01536X	1-38
S/N A222E-01537X⇒	1-40
⇒S/N A222E-1516	1-36
FLOW AMPLIFIER	
⇒S/N A222E-01536X	7-20
FLOW VALVE	9-64
FLYWHEEL	
TIER I ENGINE	2-26
FLYWHEEL HOUSING	
TIER II ENGINE	2-134
FOOT ASSEMBLY	
INTERMODAL HANDLER	12-48
FREE TILT ARRANGEMENT	11-28
FRONT ENGINE SUPPORT	2-14
FRONT GEAR COVER	
TIER II ENGINE	2-136
FUEL FILTER	
TIER I ENGINE	3-2
TIER II ENGINE	3-4
FUEL FILTER PLUMBING	
TIER II ENGINE	3-6
FUEL PLUMBING	
TIER II ENGINE	3-14
FUEL PUMP ASSEMBLY	
TIER II ENGINE	3-10
FUEL PUMP COUPLING	
TIER II ENGINE	3-13
FUEL PUMP DRIVE	
TIER II ENGINE	3-8
FUEL TANK AND FUEL SYSTEM	
TIER I ENGINE	
S/N A222E-01537X↔S/N A222E-01562Z INC. 1564-1565	1-52
TIER II ENGINE	
S/N A222E-01563Z⇒ EXC. 1564-1565	1-54
FUEL TANK AND PLATFORM	
⇒S/N A222E-01536X	1-48
S/N A222E-01537X⇒	1-50
G	
GEAR HOUSING	
TIER II ENGINE	2-120
GEAR REDUCER AND ADAPTER	
⇒S/N A222E-01532X	11-34

TABLE OF CONTENTS (Continued)

DESCRIPTION	PAGE
H	
HEATER	
⇒S/N A222E01562Z	1-30
HEATER ASSEMBLY	1-34
HEATER HOSE ARRANGEMENT	
S/N A222E01563Z⇒	1-32
HOOD AND COVERS	
SLIDING CAB	
TIER II ENGINE	
S/N A222E-01563Z⇒ EXC. 1564-1565	1-12
STANDARD CAB	
TIER II ENGINE	
S/N A222E-01563Z⇒ EXC. 1564-1565	1-10
TIER I ENGINE	
S/N A222E-01537X⇔S/N A222E-01562Z INC. 1564-1565.....	1-8
HOOD, COVERS AND SOUND DAMPENING	
⇒S/N A222E-01536X.....	1-4
HUB AND SHAFT.....	6-18
HYDRAULIC CYLINDER	
INTERMODAL HANDLER	
⇒S/N A222E01551Y.....	12-54
S/N A222E01552Y⇒.....	12-42
HYDRAULIC CYLINDER AND ATTACHING PARTS	
CONTAINER HANDLER.....	12-22
INTERMODAL HANDLER	12-46
HYDRAULIC DAMPING	
LOCKING	
⇒PENDING PER ECN 68374	11-20
NON-LOCKING	
⇒PENDING PER ECN 68374	11-18
PENDING PER ECN 68374⇒.....	11-23
HYDRAULIC LIFT SYSTEM	
⇒S/N A222E-01536X.....	9-8
HYDRAULIC MOTOR	
⇒S/N A222E-01536X.....	11-10
HYDRAULIC MOTOR AND TRANSMISSION ASSEMBLY	12-10
HYDRAULIC OIL FILTER.....	9-54
HYDRAULIC PILOT SYSTEM	
⇒S/N A222E-01536X.....	9-4
HYDRAULIC PUMP	
HOIST AND STEERING	
⇒S/N A222E-01536X	9-72
HOIST AND STEERING END COVER	
⇒S/N A222E-01536X	9-74
PILOT AND SLIDING CAB	
⇒S/N A222E-01536X	9-56
SPREADER AND COOLING	
⇒S/N A222E-01536X	9-58
HYDRAULIC PUMP AND ATTACHING PARTS	
HOIST AND STEERING	
S/N A222E-01537X⇒	9-70
HYDRAULIC SPREADER	

TABLE OF CONTENTS (Continued)

DESCRIPTION	PAGE
H (continued)	
⇒S/N A222E-01536X.....	9-12
HYDRAULIC STOP KIT.....	12-4
HYDRAULIC SUPPLY AND RETURN	
SLIDING CAB AND HYDRAULIC OIL COOLER	
TIER II	
S/N A222E01603C⇒.....	9-46
TIER II ENGINE	
S/N A222E01563Z↔S/N A222E01602C EXC. 1564-1565.....	9-44
HYDRAULIC SYSTEM	
CONTAINER HANDLER.....	12-26
INTERMODAL HANDLER	
SHEET 1 OF 3.....	12-58
SHEET 2 OF 3.....	12-60
SHEET 3 OF 3.....	12-62
SHEET 1 OF 2	
TIER I ENGINE	
S/N A222E-01537X⇒.....	9-20
TIER II ENGINE	
S/N A222E01563Z↔S/N A222E01602C EXC. 1564-1565.....	9-28
S/N A222E01603C⇒.....	9-36
SHEET 2 OF 2	
TIER I ENGINE	
S/N A222E-01537X⇒.....	9-24
TIER II ENGINE	
S/N A222E01563Z↔S/N A222E01602C EXC. 1564-1565.....	9-32
S/N A222E01603C⇒.....	9-40
WITHOUT POWERED PILE SLOPE AND POWER DAMPING	
SERIES 817-8761.....	12-96
HYDRAULIC TANK AND PLATFORM	
⇒S/N A222E-01536X.....	1-42
S/N A222E-01537X⇒.....	1-46
HYDRAULIC VALVE	
INTERMODAL HANDLER	
SHEET 1 OF 2.....	12-38
SHEET 2 OF 2.....	12-40
I	
IDLER GEAR	
TIER II ENGINE.....	2-128
INJECTOR	
TIER II ENGINE.....	3-16
INLET CONNECTOR	
AIR COMPRESSOR	
TIER II ENGINE.....	2-132
INLET SECTION	
⇒S/N A222E-01536X.....	9-88
S/N A222E-01537X⇒.....	9-98
INNER BOOM	
PENDING PER ECN 68374⇒.....	10-6

TABLE OF CONTENTS (Continued)

DESCRIPTION	PAGE
I (continued)	
⇒PENDING PER ECN 68374	10-4
INSTRUMENT PANEL	
TIER I ENGINE	
⇒S/N A222E-1532	4-6
S/N A222E-1533⇒	4-8
TIER II ENGINE	
S/N A222E-01563Z⇒ EXC. 1564-1565	4-10
INTAKE MANIFOLD	
TIER II ENGINE	2-52
L	
LABELS AND PAINT	1-66
LEG ASSEMBLY	
INTERMODAL HANDLER	12-50
LEG ATTACHMENT	
INTERMODAL HANDLER	12-52
LIFTING BRACKET	2-28
LIFTING VALVE	9-66
LIGHT ARRANGEMENT	
⇒S/N A222E-1536	4-18
LIMITATOR ARRANGEMENT	
⇒S/N A222E-1536	4-14
S/N A222E-1537⇒	4-16
LIMITATOR PANEL	
⇒S/N A222E-1536	4-12
M	
MAIN FRAME	
WITHOUT POWERED PILE SLOPE AND POWER DAMPING	
SERIES 817-8761	12-68
MAIN HYDRAULIC VALVES	9-78
MAIN WIRING DIAGRAM	
FRAME	
SHEET 1 OF 2	
⇒S/N A222E-1532	4-74
SHEET 2 OF 2	
⇒S/N A222E-1532	4-78
MAINFRAME	
CONTAINER HANDLER	12-20
INTERMODAL HANDLER	12-56
MANUAL PUMP	
⇒S/N A222E-01536X	9-60
MOTION CONTROL VALVE	
⇒S/N A222E-01532X	9-62
O	
OIL COOLER WATER PLUMBING	
TIER I ENGINE	2-42
TIER II ENGINE	2-44

TABLE OF CONTENTS (Continued)

DESCRIPTION	PAGE
O (continued)	
OIL FILLER ARRANGEMENT	
HAND COVER	
TIER II ENGINE	2-38
TIER I ENGINE	2-36
TIER II ENGINE	2-148
OIL FILTER	
TIER II ENGINE	2-34
OIL FILTER AND COOLER HEAD	
TIER I ENGINE	2-30
TIER II ENGINE	2-32
OIL LEVEL GAUGE	
TIER II ENGINE	2-126
OIL MANIFOLD	
TIER I ENGINE	2-40
OIL PAN	
TIER II ENGINE	2-124
OIL PUMP AND ATTACHING PARTS	
TIER II ENGINE	2-138
OPERATOR COMPARTMENT	1-28
OPERATOR COMPARTMENT MOUNTING	
STANDARD CAB	
S/N A222E-01563Z⇒ EXC. 1564-1565	1-20
OPERATOR COMPARTMENT WIRING DIAGRAM	
EMPTY CONTAINER HANDLER	
SHEET 1 OF 2	
⇒S/N A222E-1532	4-80
SHEET 2 OF 2	
⇒S/N A222E-1532	4-84
OUTER BOOM	10-2
OUTLET SECTION	
⇒S/N A222E-01536X	9-82
S/N A222E-01537X⇒	9-94
P	
PARK BRAKE	
⇒S/N A222E-1511	8-12
S/N A222E-1512⇔S/N A222E-01536X	8-14
S/N A222E01537X⇒	8-16
PENDULAR TWIST LOCK	
WITHOUT POWERED PILE SLOPE AND POWER DAMPING	
SERIES 817-8761	12-78
PILOT VALVE	
⇒S/N A222E-01536X	9-6
PISTON AND CONNECTING ROD	
TIER II ENGINE	2-116
PISTON COOLING NOZZLE	
TIER II ENGINE	2-118
POWER TILT ARRANGEMENT	11-26
POWER TILT CYLINDER	

TABLE OF CONTENTS (Continued)

DESCRIPTION	PAGE
P (continued)	
⇒S/N A222E-01532X.....	11-54
PUMP	8-2
PUMP DRIVE AND SHAFT.....	5-12
R	
RADIATOR	
TIER II ENGINE	
S/N A222E-01563Z⇒ EXC. 1564-1565	2-98
RADIATOR PLUMBING	
TIER II ENGINE.....	2-74
REGULATING PRESSURE VALVE AND CHARGE PUMP	5-8
REGULATOR	
⇒S/N A222E-01536X.....	9-76
RELAY VALVE	
⇒S/N A222E-01536X.....	8-4
ROCKER LEVERS	
TIER II ENGINE.....	2-144
ROTATOR AND SPREADER HYDRAULIC VALVES.....	11-42
ROTATOR ASSEMBLY	
CONTAINER HANDLER	
DUAL SPEED.....	12-18
INTERMODAL HANDLER	12-44
WITHOUT POWERED PILE SLOPE AND POWER DAMPING	
SERIES 817-8761	12-74
ROTATOR ATTACHMENT	
⇒S/N A222E-01536X.....	11-36
S/N A222E-01537X⇒.....	11-38
ROTATOR FLOW VALVE.....	11-30
ROTATOR HYDRAULIC.....	11-2
S	
SEAT	
SUSPENSION, HIGH BACK, GRAMMER	
SHEET 1 OF 2	
S/N A222E01533X⇒.....	1-62
SHEET 2 OF 2	
S/N A222E01533X⇒.....	1-64
SHIFT CONTROL.....	5-2
SHUTTLE VALVE	
⇒S/N A222E-01536X.....	8-8
SIDE-SHIFT CYLINDER	12-12
⇒S/N A222E-01532X.....	11-52
WITHOUT POWERED PILE SLOPE AND POWER DAMPING	
SERIES 817-8761	12-81
SLIDING CAB ARRANGEMENT	
TIER I ENGINE	
⇒S/N A222E-01562Z INC. 1564-1565	1-14
TIER II ENGINE	
S/N A222E-01563Z⇒ EXC. 1564-1565	1-16

TABLE OF CONTENTS (Continued)

DESCRIPTION	PAGE
S (continued)	
SLIDING CYLINDER	
⇒S/N A222E-01536X.....	1-24
S/N A222E-01563Z⇒ EXC. 1564-1565.....	1-26
SPOOL SECTION	
S/N A222E-01537X⇒.....	9-100
SPREADER CONTROL BOX	
⇒S/N A222E-1532.....	4-23
SPREADER HYDRAULIC ATTACHMENT.....	11-6
STARTER MOTOR	
TIER II ENGINE.....	4-130
STEER TIRE AND WHEEL.....	13-20
18.00 X 25 X 40 PLY PREMIUM	
RS46-33CH, RS46-36CH, RS46-30IH, RS46-33IH.....	13-14
18.00 X 33 X 32 PLY PREMIUM	
RS46-33CH, RS46-36CH, RS46-30IH, RS46-33IH.....	13-16
18.00 X 33 X 40 PLY.....	13-18
STANDARD	
RS45-30CH, RS45-27IH.....	13-12
STEERING COLUMN.....	7-12
STEERING CYLINDER	
⇒S/N A222E-01532X.....	7-16
S/N A222E-01533X⇒.....	7-18
STEERING PUMP.....	7-14
STEERING SYSTEM.....	7-2
STOP KIT ASSEMBLY	
WITHOUT POWERED PILE SLOPE AND POWER DAMPING	
SERIES 817-8761.....	12-73
SUSPENSION SEAT	
⇒S/N A222E01532X.....	1-60
SWIVEL ASSEMBLY	
WITHOUT POWERED PILE SLOPE AND POWER DAMPING	
SERIES 817-8761.....	12-86
T	
THERMOSTAT.....	2-60
THERMOSTAT HOUSING.....	2-58
THROTTLE AND BRAKE ARRANGEMENT	
SHEET 1 OF 2	
TIER I ENGINE	
S/N A222E-01537X⇒.....	3-18
TIER II ENGINE	
S/N A222E-01563Z⇒ EXC. 1564-1565.....	3-26
SHEET 2 OF 2	
TIER I ENGINE	
S/N A222E-01537X⇒.....	3-22
TIER II ENGINE	
S/N A222E-01563Z⇒ EXC. 1564-1565.....	3-30
THROTTLE PEDAL	
TIER I ENGINE	

TABLE OF CONTENTS (Continued)

DESCRIPTION	PAGE
T (continued)	
⇒S/N A222E-01562Z INC. 1564-1565	3-32
THROTTLE PEDAL ASSEMBLY	
ELECTRONIC	
TIER II ENGINE	
S/N A222E-01563Z⇒ EXC. 1564-1565	3-36
TIPPING CYLINDER	
RS45-30CH, RS45-27IH	
⇒S/N A222E-01562Z INC. 1564-1565	1-22
TRAIL AXLE	
⇒S/N A222E-01536X	7-8
S/N A222E-01537X⇒	7-10
TRAIL AXLE AND ATTACHING PARTS	7-6
TRANSMISSION CASE AND REAR COVER	5-26
TRANSMISSION LINES	
⇒S/N A222E-01562Z INC. 1564-1565	5-4
TIER I AND TIER II ENGINE	
S/N A222E-01563Z⇒ EXC. 1564-1565	5-6
TREADLE VALVE	
⇒S/N A222E-01536X	8-6
TURBOCHARGER	
TIER I ENGINE	2-46
TIER II ENGINE	2-48
TURBOCHARGER PLUMBING	
TIER I ENGINE	2-62
TIER II ENGINE	2-146
TURBOCHARGER WATER PLUMBING	
TIER I ENGINE	2-64
TWIST LOCK	12-30
TWIST LOCK ARRANGEMENT	11-16
TWIST LOCK ATTACHMENT	12-28
TWIST LOCK CYLINDER	12-32
⇒S/N A222E-01532X	11-44
U	
UNIVERSAL SHAFT	
S/N A222E-01537X⇒	6-14
V	
VALVE	
INTERMODAL HANDLER	
SHEET 1 OF 2	12-34
SHEET 2 OF 2	12-36
ROTATOR WITH DUAL SPEED	12-14
SPREADER TYPE	12-16
VALVE ASSEMBLY (DAMPING)	
WITHOUT POWERED PILE SLOPE AND POWER DAMPING	
SERIES 817-8761	12-94
VALVE ASSEMBLY (EXTENSION CYLINDER)	
WITHOUT POWERED PILE SLOPE AND POWER DAMPING	

TABLE OF CONTENTS (Continued)

DESCRIPTION	PAGE
V (continued)	
SERIES 817-8761	12-91
VALVE ASSEMBLY (ROTATOR AND BRAKE WITHOUT POWERED PILE SLOPE AND POWER DAMPING SERIES 817-8761	12-88
VALVE ASSEMBLY (SIDE-SHIFT) WITHOUT POWERED PILE SLOPE AND POWER DAMPING SERIES 817-8761	12-92
VALVE ASSEMBLY (SWIVEL) WITHOUT POWERED PILE SLOPE AND POWER DAMPING SERIES 817-8761	12-90
VALVE COVER	2-66
VIBRATION DAMPER TIER II ENGINE	2-76
W	
WATER PUMP	2-70
WEAR PADS	12-6
WITHOUT POWERED PILE SLOPE AND POWER DAMPING SERIES 817-8761	12-70
WHEEL AND DRIVE PLATE	5-34
WHEEL BRAKE WET ⇒S/N A222E-01536X	8-18
S/N A222E01537X⇒	8-20
WIPER MOTOR	4-4
WIRE HARNESS BOOM LIGHT	4-31
CAB ⇒S/N A222E-1532	4-58
CONTROL ATTACHMENT ⇒S/N A222E-1532	4-52
CONTROL VALVE AND OIL FILTER RESTRICTION TRANSMISSION S/N A222E-01537X⇒	4-37
⇒S/N A222E-1536	4-36
CONTROLLER AND SLIDING CAB ⇒S/N A222E-01536X	4-54
S/N A222E-01537X⇒	4-55
ENGINE COMPARTMENT	4-33
EXTENSION	4-49
FRONT LIGHT EXTENSION S/N A222E-01537X⇒	4-47
⇒S/N A222E-1536	4-46
FRONT LIGHTS LOAD LIMITER S/N A222E-01537X⇒	4-35
FRONT LIGHTS AND KRUGER DEVICE ⇒S/N A222E-1536	4-34
FRONT WIPER MOTOR	4-62
HYDRAULIC	

TABLE OF CONTENTS (Continued)

DESCRIPTION	PAGE
W (continued)	
LEFT HAND	
S/N A222E-01537X⇒	4-40
⇒S/N A222E-1536	4-38
RIGHT HAND	
S/N A222E-01537X⇒	4-43
⇒S/N A222E-1536	4-42
HYDRAULIC CONTROLLER	
⇒S/N A222E-1532	4-53
IDLE VALIDATION SWITCH	
S/N A222E-01537X⇒	4-72
INDICATOR LIGHT ATTACHMENT	
SHEET 1 OF 2	
⇒S/N A222E-1532	4-26
SHEET 2 OF 2	
⇒S/N A222E-1532	4-27
INTERMODAL HANDLER	4-29
⇒S/N A222E-1532	4-60
JOYSTICK	
⇒S/N A222E-1532	4-51
MARKER LIGHT EXTENSION	
RH FRONT	4-48
MARKER LIGHT EXTENSION FRONT	
LEFT HAND	4-44
REAR LIGHT, BACK-UP ALARM, AND FUEL LEVEL	4-32
ROTATOR CONTROL	
⇒S/N A222E-1532	4-70
SLIDING CAB	
S/N A222E-01537X⇒	4-64
⇒S/N A222E-1536	4-63
SPREADER	
TYPE 1	
⇒S/N A222E-1532	4-65
TYPE 2	
⇒S/N A222E-1532	4-68
SPREADER CONTROL	
TYPE 1	
⇒S/N A222E-1532	4-61
TYPE 2	
⇒S/N A222E-1532	4-66
STANDARD SPREADER	
TYPE 1	4-28
TYPE 2	4-30
TRANSMISSION CONTROL	4-50
WORKLIGHT EXTENSION	4-45
WIRING ACCESSORIES	
ELECTRONIC CONTROL MODULE	
TIER II ENGINE	4-126

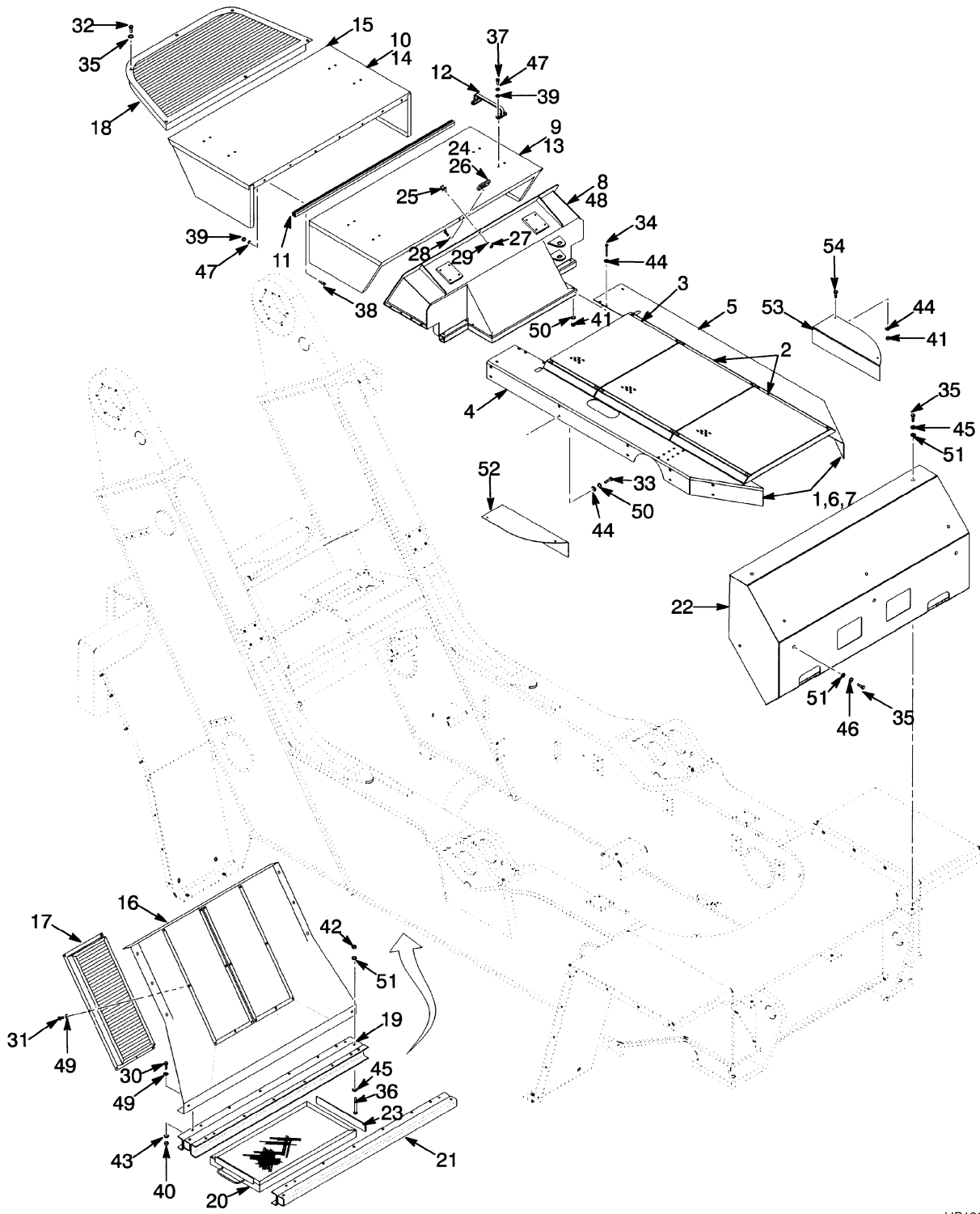
SECTION 1
FRAME

DESCRIPTION	PAGE
CAB TILT	
RS45-30CH, RS45-27IH	
⇒S/N A222E-01562Z INC. 1564-1565	1-18
COUNTERWEIGHT	
FABRICATED	
PENDING PER ECN 68415⇒	1-58
⇒PENDING PER ECN 68415	1-56
FENDER AND RAIL	
S/N A222E-01517⇔S/N A222E-01536X	1-38
S/N A222E-01537X⇒	1-40
⇒S/N A222E-1516	1-36
FUEL TANK AND FUEL SYSTEM	
TIER I ENGINE	
S/N A222E-01537X⇔S/N A222E-01562Z INC. 1564-1565	1-52
TIER II ENGINE	
S/N A222E-01563Z⇒ EXC. 1564-1565	1-54
FUEL TANK AND PLATFORM	
⇒S/N A222E-01536X	1-48
S/N A222E-01537X⇒	1-50
HEATER	
⇒S/N A222E01562Z	1-30
HEATER ASSEMBLY	1-34
HEATER HOSE ARRANGEMENT	
S/N A222E01563Z⇒	1-32
HOOD AND COVERS	
SLIDING CAB	
TIER II ENGINE	
S/N A222E-01563Z⇒ EXC. 1564-1565	1-12
STANDARD CAB	
TIER II ENGINE	
S/N A222E-01563Z⇒ EXC. 1564-1565	1-10
TIER I ENGINE	
S/N A222E-01537X⇔S/N A222E-01562Z INC. 1564-1565	1-8
HOOD, COVERS AND SOUND DAMPENING	
⇒S/N A222E-01536X	1-4
HYDRAULIC TANK AND PLATFORM	
⇒S/N A222E-01536X	1-42
S/N A222E-01537X⇒	1-46
LABELS AND PAINT	1-66
OPERATOR COMPARTMENT	1-28
OPERATOR COMPARTMENT MOUNTING	
STANDARD CAB	
S/N A222E-01563Z⇒ EXC. 1564-1565	1-20
SEAT	
SUSPENSION, HIGH BACK, GRAMMER	
SHEET 1 OF 2	
S/N A222E01533X⇒	1-62
SHEET 2 OF 2	
S/N A222E01533X⇒	1-64
SLIDING CAB ARRANGEMENT	

SECTION 1 FRAME (Continued)

DESCRIPTION	PAGE
TIER I ENGINE	
⇒S/N A222E-01562Z INC. 1564-1565	1-14
TIER II ENGINE	
S/N A222E-01563Z⇒ EXC. 1564-1565	1-16
SLIDING CYLINDER	
⇒S/N A222E-01536X	1-24
S/N A222E-01563Z⇒ EXC. 1564-1565	1-26
SUSPENSION SEAT	
⇒S/N A222E01532X	1-60
TIPPING CYLINDER	
RS45-30CH, RS45-27IH	
⇒S/N A222E-01562Z INC. 1564-1565	1-22

HOOD, COVERS AND SOUND DAMPENING (Figure 1-1) (⇒S/N A222E-01536X)



HP120150

HOOD, COVERS AND SOUND DAMPENING

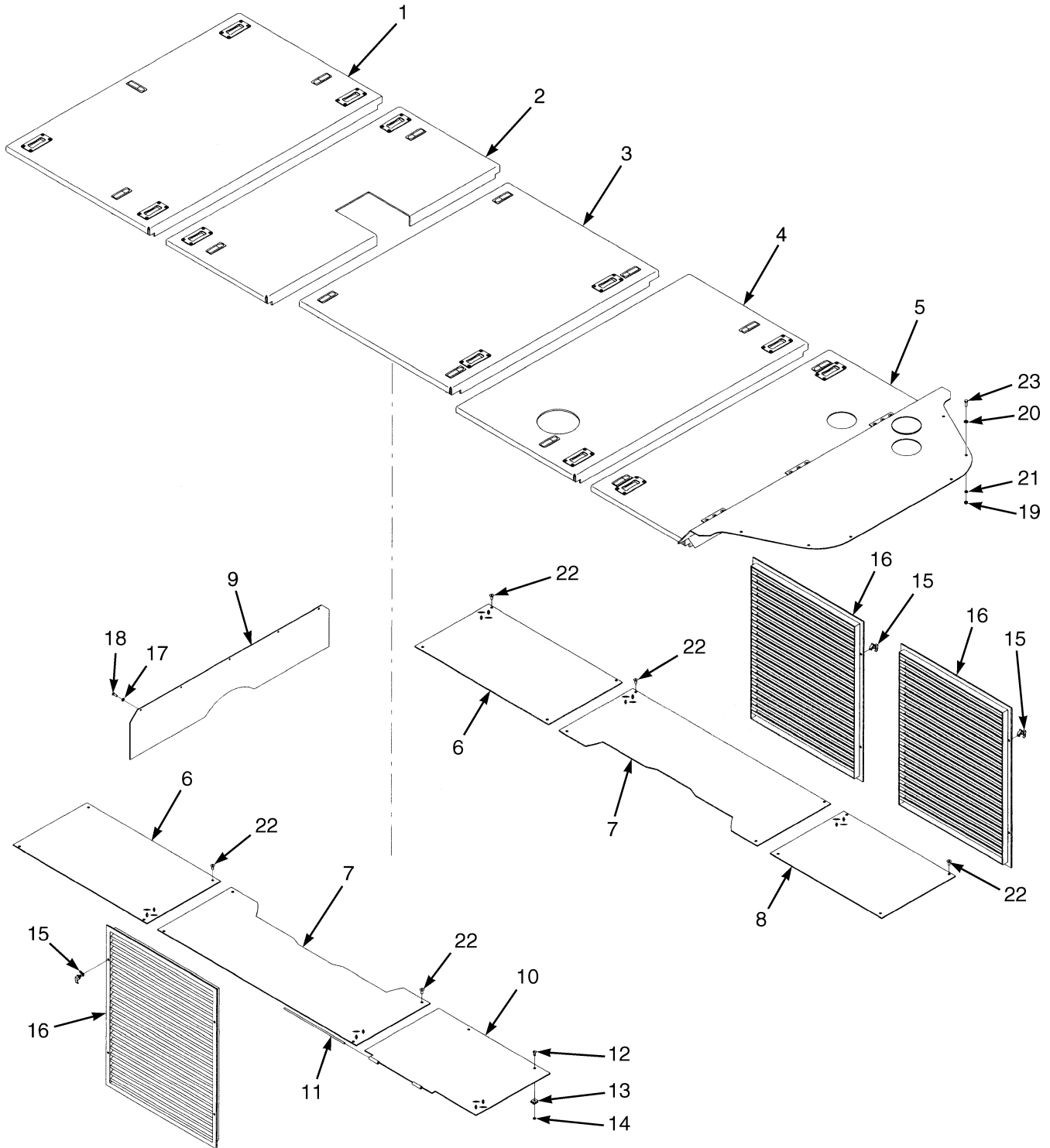
(⇒S/N A222E-01536X)

ITEM	PART NO.	DESCRIPTION	QTY
1	886740	Cover (Front).....	1
2	886741	Cover	2
3	889823	Cover	1
4	888927	Support (RH)	1
5	888926	Support (LH).....	1
6	889790	U-Nut	12
7	296247	Screw	12
8	888400	Hood (Front)	1
9	889791	Hood (Intermediate).....	1
10	889792	Hood (Rear)	1
11	885803	Hinge	1
12	886777	Handle	4
13	886782	Seal	2
14	888415	Seal	2
15	888416	Seal	1
16	889780	Support (Rear).....	1
17	885781	Support (Rear).....	2
18	885785	Support (Rear).....	1
19	885798	Support.....	1
20	889782	Cover (Lower)	2
21	885836	Support (Lower).....	1
22	1478659	Cover (Front).....	1
23	885977	Seal	1
24	888405	Latch	1
25	889781	Bolt	1
26	16378	Capscrew.....	4
27	15056	Nut	1
28	15154	Lockwasher.....	4
29	15156	Lockwasher.....	1
30	292501	Capscrew.....	30
31	287851	Capscrew.....	22
32	136681	Capscrew.....	50
33	292513	Capscrew.....	20
34	292521	Capscrew.....	8
35	292527	Capscrew.....	8
36	292537	Capscrew.....	8
37	296196	Capscrew.....	16
38	292672	Capscrew.....	14
39	292667	Nut	30
40	239503	Nut	2
41	136692	Nut	20
42	216877	Nut	8
43	320157	Washer	2
44	320159	Washer	48
45	320161	Washer	13
46	320162	Washer	3
47	292678	Lockwasher.....	30
48	292680	Lockwasher.....	30
49	292681	Lockwasher.....	72
50	292682	Lockwasher.....	36
51	292683	Lockwasher.....	16

HOOD, COVERS AND SOUND DAMPENING (⇒S/N A222E-01536X)

ITEM	PART NO.	DESCRIPTION	QTY
52	888146	Cover (RH).....	1
53	886442	Cover (LH).....	1
54	292514	Capscrew.....	4

HOOD AND COVERS (Figure 1-2) TIER I ENGINE (S/N A222E-01537X↔S/N A222E-01562Z INC. 1564-1565)

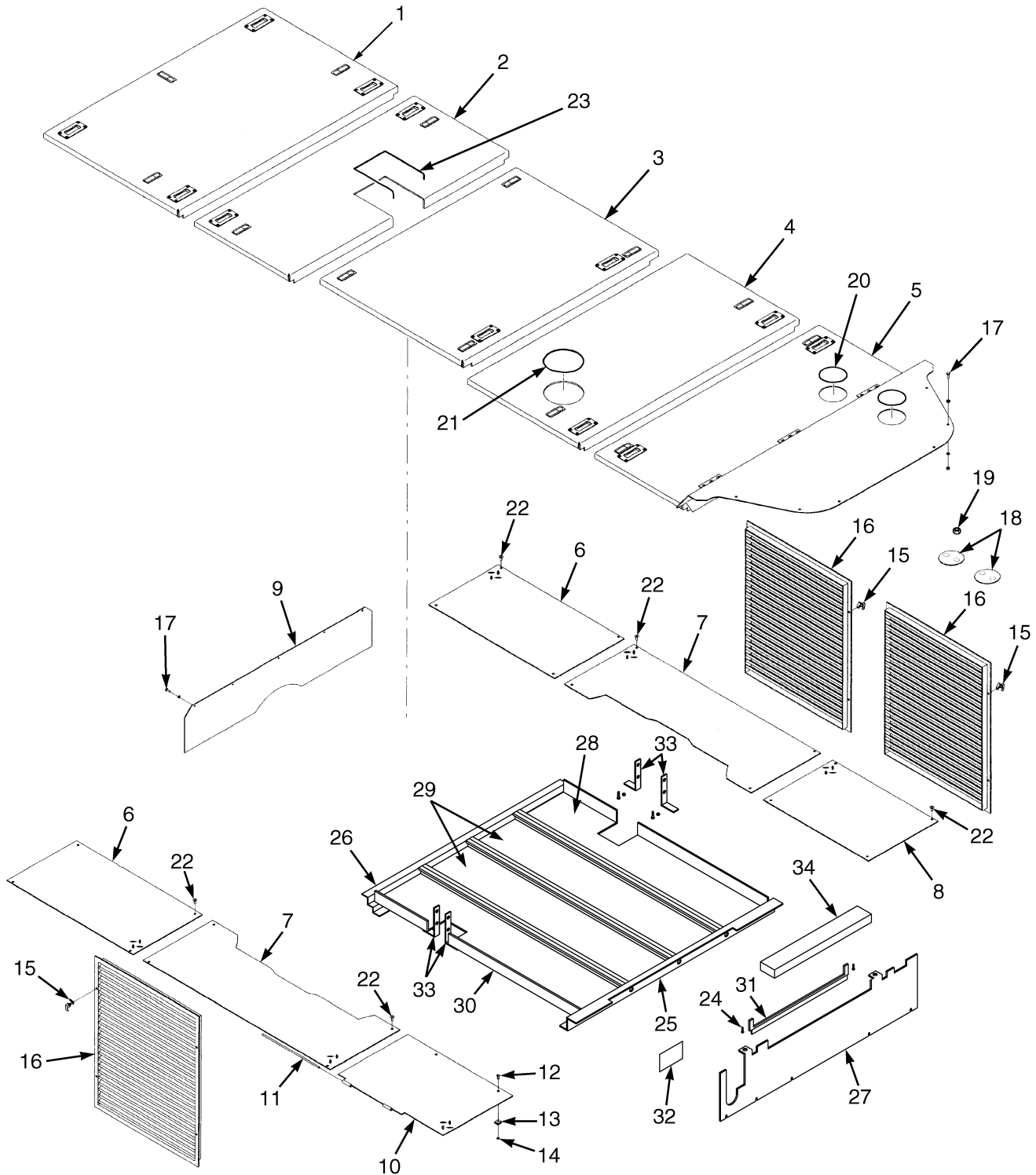


HP120661

HOOD AND COVERS
TIER I ENGINE
(S/N A222E-01537X↔S/N A222E-01562Z INC. 1564-1565)

ITEM	PART NO.	DESCRIPTION	QTY
1	1475436	Cover (Front).....	1
2	1475437	Cover (Intermediate).....	1
3	1475438	Cover (Intermediate).....	1
4	1475439	Cover (Intermediate).....	1
5	1475440	Cover (Rear).....	1
6	889566	Cover.....	2
7	889565	Cover.....	2
8	889628	Cover.....	1
9	1486602	Plate.....	1
10	889564	Cover.....	1
11	889581	Rod.....	1
12	889626	Stud.....	2
13	887221	Receptacle.....	2
14	887220	Retainer.....	2
15	320048	Latch.....	12
16	1484416	Grille.....	3
17	292680	Lockwasher.....	5
18	292501	Capscrew.....	5
19	239503	Nut.....	6
20	320157	Washer.....	6
21	292681	Lockwasher.....	6
22	296226	Capscrew.....	20
23	136749	Capscrew.....	6

HOOD AND COVERS (Figure 1-3) STANDARD CAB TIER II ENGINE (S/N A222E-01563Z → EXC. 1564-1565)



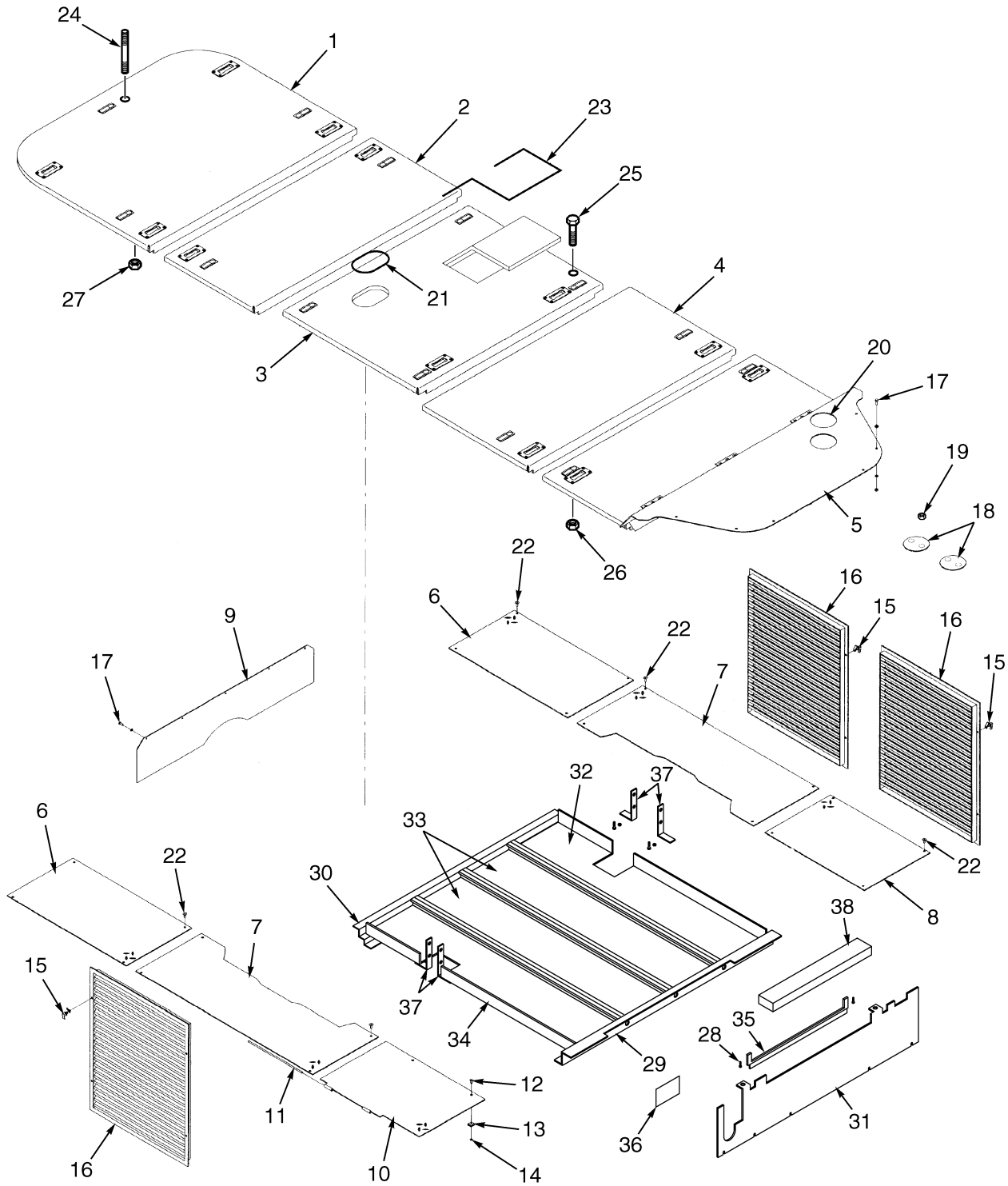
HP120457

**HOOD AND COVERS
STANDARD CAB
TIER II ENGINE
(S/N A222E-01563Z ⇒ EXC. 1564-1565)**

ITEM	PART NO.	DESCRIPTION	QTY
1	1475436	Cover (Front).....	1
2	1475437	Cover (Intermediate).....	1
3	1475438	Cover (Intermediate).....	1
4	1524634	Cover (Intermediate).....	1
5	1524565	Cover (Rear).....	1
6	889566	Cover.....	2
7	889565	Cover.....	2
8	889628	Cover.....	1
9	1486602	Plate.....	1
10	889564	Cover.....	1
11	889581	Rod.....	1
12	889626	Stud.....	2
13	887221	Receptacle.....	2
14	887220	Retainer.....	2
15	320048	Latch.....	12
16	1484416	Grille.....	3
17	1527880	Capscrew.....	11
18	1510616	Plate.....	4
19	1460477	Nut (Flange).....	8
20	1529136	Trim.....	1
21	1529137	Trim.....	1
22	296226	Capscrew.....	20
23	1529138	Trim.....	AR
24	a 1510117	Capscrew.....	15
25	a 1534932	Plate.....	1
26	a 1534931	Plate.....	1
27	a 1534924	Plate.....	1
28	a 1534926	Panel (Acoustic).....	1
29	a 1534930	Panel (Acoustic).....	2
30	a 1534928	Panel (Acoustic).....	1
31	a 1491360	Seal.....	AR
32	a 1336898	Trim.....	1
33	a 1534933	Bracket (Angle).....	4
34	a 1536670	Liner.....	1

FOOTNOTES:**a** S/N A222E-01577A ⇒

HOOD AND COVERS (Figure 1-4) SLIDING CAB TIER II ENGINE (S/N A222E-01563Z → EXC. 1564-1565)

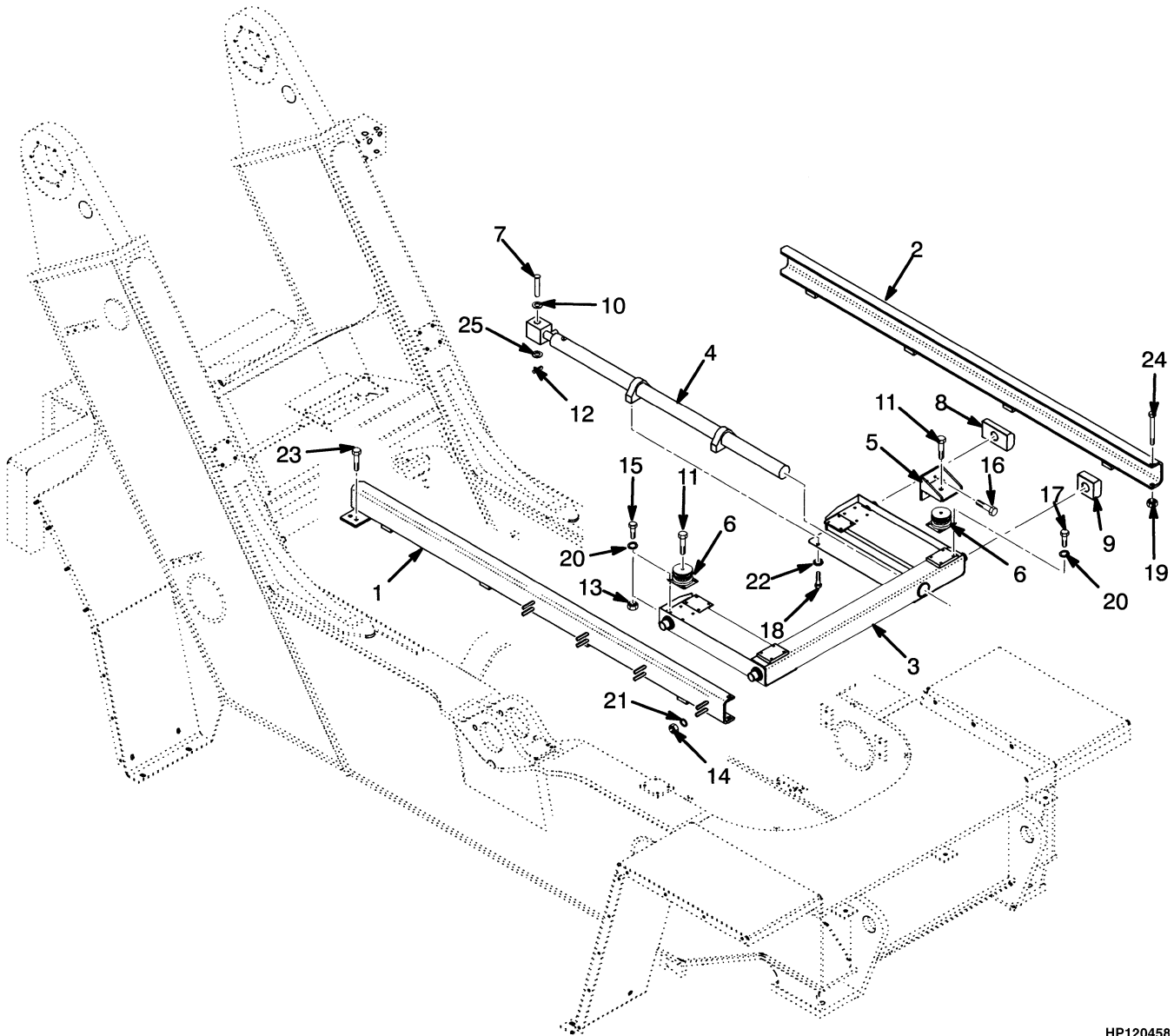


**HOOD AND COVERS
SLIDING CAB
TIER II ENGINE
(S/N A222E-01563Z ⇒ EXC. 1564-1565)**

ITEM	PART NO.	DESCRIPTION	QTY
1	1525807	Cover (Front).....	1
2	1525798	Cover (Intermediate 1).....	1
3	1525808	Cover (Intermediate 2).....	1
4	1525796	Cover (Intermediate 3).....	1
5	1524565	Cover (Rear).....	1
6	889566	Cover.....	2
7	889565	Cover.....	2
8	889628	Cover.....	1
9	1486602	Plate.....	1
10	889564	Cover.....	1
11	889581	Rod.....	1
12	889626	Stud.....	2
13	887221	Receptacle.....	2
14	887220	Retainer.....	2
15	320048	Latch.....	12
16	1484416	Grille.....	3
17	1527880	Capscrew.....	11
18	1510616	Plate.....	4
19	1460477	Nut (Flange).....	8
20	1529136	Trim.....	1
21	1529309	Trim.....	1
22	296226	Capscrew.....	20
23	1529138	Trim.....	AR
24	367251	Stop Screw.....	1
25	1510116	Capscrew.....	4
26	1502543	Nut (Flange).....	4
27	191534	Nut.....	1
28	a 1510117	Capscrew.....	15
29	a 1534932	Plate.....	1
30	a 1534931	Plate.....	1
31	a 1534924	Plate.....	1
32	a 1534926	Panel (Acoustic).....	1
33	a 1534930	Panel (Acoustic).....	2
34	a 1534928	Panel (Acoustic).....	1
35	a 1491360	Seal.....	AR
36	a 1336898	Trim.....	1
37	a 1534933	Bracket (Angle).....	4
38	a 1536670	Liner.....	1

FOOTNOTES:**a** S/N A222E-01577A ⇒

SLIDING CAB ARRANGEMENT (Figure 1-5) TIER I ENGINE (⇒S/N A222E-01562Z INC. 1564-1565)



HP120458



Suggest:

For more complete manuals. Please go to the home page.

<https://www.ebooklibonline.com>

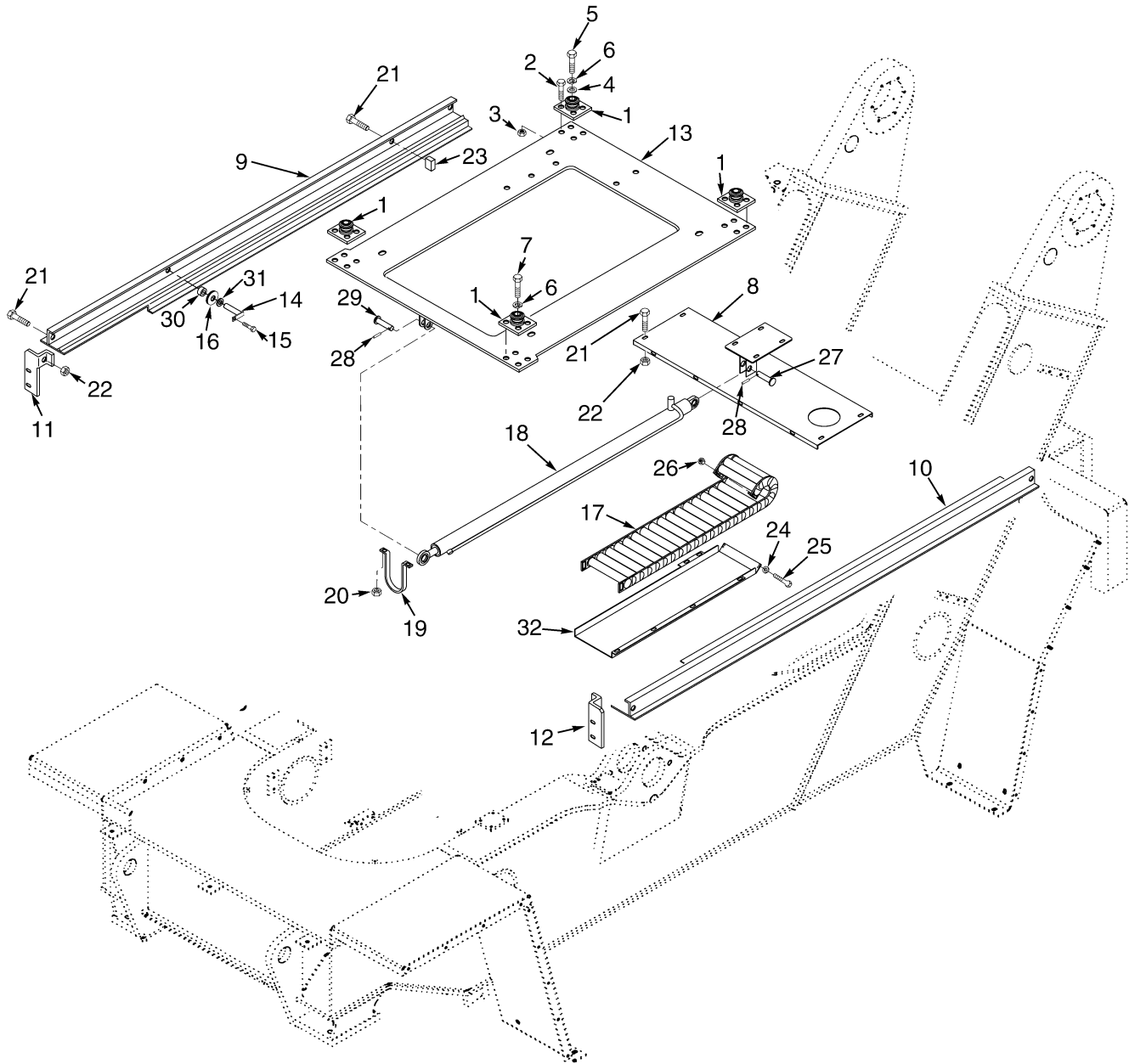
If the above button click is invalid. Please download this document first, and then click the above link to download the complete manual.

Thank you so much for reading

**SLIDING CAB ARRANGEMENT
TIER I ENGINE
(⇒S/N A222E-01562Z INC. 1564-1565)**

ITEM	PART NO.	DESCRIPTION	QTY
1	889490	Guide (RH)	1
2	889491	Guide (LH)	1
3	887961	Support.....	1
4	888291	Cylinder (☞ Figure 1-10)	1
5	887974	Bracket (Cab).....	2
6	886436	Isolator.....	6
7	886425	Pin	1
8	887984	Block	2
9	887985	Block	2
10	887986	Spacer	2
11	887987	Capscrew.....	6
12	302469	Pin	1
13	136692	Nut	24
14	216877	Nut	16
15	287854	Capscrew.....	16
16	287860	Capscrew.....	8
17	292514	Capscrew.....	8
18	292560	Capscrew.....	4
19	292600	Nut	2
20	292682	Lockwasher.....	32
21	292683	Lockwasher.....	20
22	292685	Lockwasher.....	10
23	293647	Capscrew.....	4
24	293700	Capscrew.....	2
25	296440	Washer	1

SLIDING CAB ARRANGEMENT (Figure 1-6) TIER II ENGINE (S/N A222E-01563Z ⇒ EXC. 1564-1565)



HP120631

<https://www.ebooklibonline.com>

Hello dear friend!

Thank you very much for reading.

Enter the link into your browser.

The full manual is available for immediate download.

<https://www.ebooklibonline.com>