

PARTS MANUAL

CHALLENGER

**H14.00-18.00XM-12, -12EC
(A214)**

CUSTOMER EDITION

HYSTER

SECTIONS

1	FRAME
2	ENGINES
3	FUEL SYSTEM
4	ELECTRICAL SYSTEM
5	TRANSMISSION
6	DRIVE AXLE
7	STEERING SYSTEM
8	BRAKE SYSTEM
9	HYDRAULIC SYSTEM
10	MAST-TWO STAGE VISTA
11	MAST WITH EMPTY CONTAINER HANDLER
12	OPTIONS
13	NUMERICAL INDEX

TABLE OF CONTENTS

DESCRIPTION	PAGE
A	
AIR COMPRESSOR PLUMBING	
TIER II ENGINE	2-60
AIR FILTER	
EMPTY CONTAINER HANDLER	
TIER II ENGINE	
S/N A214E-01849Z⇒	2-104
FORK LIFT TRUCK	
TIER II ENGINE	
S/N A214E-01843Z⇒	2-102
TIER I ENGINE	2-100
AIR FILTER ASSEMBLY	2-106
AIR INTAKE CONNECTION	
TIER I ENGINE	2-22
TIER II ENGINE	2-74
AIR INTAKE HEATER	
TIER I ENGINE	2-6
AIR INTAKE HOSE	
TIER II ENGINE	2-76
AIR TRANSFER CONNECTION	
TIER II ENGINE	2-77
ALTERNATOR	
TIER I ENGINE	2-11
ALTERNATOR MOUNTING	
TIER II ENGINE	2-61
AUXILIARY ATTACHMENTS	
EMPTY CONTAINER HANDLER	11-128
B	
BRAKE ASSEMBLY	
DISC	
S/N A214E01995B⇒ (H14-16XM FLT), S/N A214E02001B⇒ (H14-60XM ECH), S/N	
A214E02034A⇒ (H18-20XM FLT)	6-20
BRAKE CHECK VALVE	
EMPTY CONTAINER HANDLER	
⇒S/N A214E-1572	8-26
FORK LIFT TRUCK	
⇒S/N A214E-1572	8-28
BRAKE COOLING SYSTEM	
ACCUMULATOR	9-72
EMPTY CONTAINER HANDLER	
⇒S/N A214E-1751	9-64
S/N A214E-1752⇒	9-66
FORK LIFT TRUCK	
⇒S/N A214E-1751	9-68
FORKLIFT TRUCK	
S/N A214E-1752⇒	9-70
BRAKE LINES	
EMPTY CONTAINER HANDLER	8-2
FORK LIFT TRUCK	
⇒S/N A214E01765Y	8-6
S/N A214E01766Y⇒	8-10

<https://www.ebooklibonline.com>

Hello dear friend!

Thank you very much for reading.

Enter the link into your browser.

The full manual is available for immediate download.

<https://www.ebooklibonline.com>

TABLE OF CONTENTS (Continued)

DESCRIPTION	PAGE
B (continued)	
BRAKE PEDAL LINKAGE	
EMPTY CONTAINER HANDLER.....	8-14
FORK LIFT TRUCK	
⇒S/N A214E01765Y.....	8-18
S/N A214E01766Y⇒.....	8-22
BRAKE SYSTEM	
POWER BRAKE VALVE	8-30
BREATHER PLUMBING	
TIER II ENGINE	2-52
C	
CAM FOLLOWER COVER	
TIER I ENGINE	2-7
CAMSHAFT	
TIER II ENGINE	2-40
CARRIAGE	
HYDRAULIC SYSTEM	
TWO STAGE VISTA	10-38
TWO STAGE VISTA	10-34
WITH MECHANICAL PILE SLOPE	
SERIES 582 AND 588	
S/N A214E02078B⇒.....	11-80
WITH QUICK DISCONNECT	
TWO STAGE VISTA	10-36
CONTAINER ATTACHMENT INSTALLATION	
582 AND 588 SERIES	
S/N A214E02078B⇒.....	11-78
CONTROL PANEL	
⇒S/N A214E-1806	4-24
S/N A214E-1807⇒	4-26
COOLING	
EMPTY CONTAINER HANDLER	
TIER II ENGINE	
S/N A214E-01849Z⇒.....	2-116
FORK LIFT TRUCK	
TIER II ENGINE	
S/N A214E-01843Z⇒.....	2-112
TIER I ENGINE	2-108
COUNTERWEIGHTS	1-48
COVER AND SEAL	
TIER I ENGINE	2-12
COVERS	
EMPTY CONTAINER HANDLER.....	1-28
FORK LIFT TRUCK	1-30
CRANKCASE BREATHER	
TIER II ENGINE	2-57
CRANKSHAFT AND MAIN BEARINGS	
TIER II ENGINE	2-36
CYLINDER BLOCK	

TABLE OF CONTENTS (Continued)

DESCRIPTION	PAGE
C (continued)	
TIER II ENGINE	2-30
CYLINDER HEAD	
TIER II ENGINE	2-32
D	
DIFFERENTIAL ASSEMBLY	
⇒S/N A214E01994B (H14-16XM FLT), ⇒S/N A214E02000B (H14-16XM ECH), ⇒S/N A214E02033A (H18-20XM FLT).....	6-10
S/N A214E01995B⇒ (H14-16XM FLT), S/N A214E02001B⇒ (H14-16XM ECH), S/N A214E02034A⇒ (H18-20XM FLT).....	6-14
DOORS	1-26
DOUBLE HORIZONTAL TWIST LOCK HEAD ASSEMBLY	
CONTAINER HANDLING ATTACHMENT (572)	
S/N A214E-1807⇒.....	11-40
DRIVE AXLE	
⇒S/N A214E02000B (H14-16XM ECH), ⇒S/N A214E02033A (H18-20XM FLT), ⇒S/N A214E01994B (H14-16XM FLT).....	6-2
S/N A214E02034A⇒ (H18-20XM FLT), S/N A214E01995B⇒ (H14-16XM FLT), S/N A214E02001B⇒ (H14-16XM ECH).....	6-6
DRIVE SHAFT.....	6-22
E	
ELECTRICAL	
CHASSIS	
TIER I ENGINE	4-4
CHASSIS (TIER II ENGINE)	
SHEET 1 OF 4	4-8
SHEET 2 OF 4	4-10
SHEET 3 OF 4	4-12
SHEET 4 OF 4	4-16
ELECTRICAL BOX MOUNT	
582 AND 588 SERIES	
S/N A214E02078B⇒.....	11-82
ELECTRICAL SYSTEM	
SERIES 582	
S/N A214E02078B⇒.....	11-112
SERIES 588	
S/N A214E02078B⇒.....	11-114
SPREADER 572 AND 573	
S/N A214E-1807⇒.....	11-72
SPREADER 575	
S/N A214E-1807⇒.....	11-74
SPREADER 578	
S/N A214E-1807⇒.....	11-76
ELECTRONIC FOOT PEDAL MOUNT	
TIER II ENGINE	3-10
EMPTY HANDLER	
EMPTY CONTAINER HANDLER	
S/N A214E-1807⇒.....	11-30

TABLE OF CONTENTS (Continued)

DESCRIPTION	PAGE
E (continued)	
END BEAM ASSEMBLY	
SERIES 582	
S/N A214E02078B⇒.....	11-98
SERIES 588	
S/N A214E02078B⇒.....	11-102
ENGINE ASSEMBLY.....	2-5
ENGINE CONTROL SYSTEM	
TIER II ENGINE.....	2-46
ENGINE MOUNT.....	2-120
ENGINE OIL COOLER	
TIER II ENGINE.....	2-79
EXHAUST	
EMPTY CONATAINER HANDLER	
TIER II ENGINE.....	2-124
EMPTY CONTAINER HANDLER	
TIER I ENGINE.....	2-122
FORK LIFT TRUCK.....	2-126
EXHAUST MANIFOLD	
TIER II ENGINE.....	2-89
EXTENSION BEAM ARRANGEMENT	
SERIES 582 AND 588	
S/N A214E02078B⇒.....	11-96
EXTENSION CYLINDER	
EMPTY CONTAINER HANDLER	
⇒S/N A214E-1806.....	11-64
S/N A214E-1807⇒.....	11-66
EXTENSION CYLINDER ASSEMBLY	
SERIES 582 AND 588	
S/N A214E02078B⇒.....	11-90
F	
FAN DRIVE	
TIER I ENGINE.....	2-13
TIER II ENGINE.....	2-62
FAN PILOT SPACER	
TIER II ENGINE.....	2-88
FENDERS	
EMPTY CONTAINER HANDLER.....	1-52
FLOOR PLATES AND COVERS	
EMPTY CONTAINER HANDLER.....	1-4
FORK LIFT TRUCK	
SHEET 1 OF 2.....	1-8
SHEET 2 OF 2.....	1-12
FLYWHEEL	
TIER I AND TIER II ENGINES.....	2-58
FLYWHEEL HOUSING	
TIER II ENGINE.....	2-50
FORK POSITIONER AND SIDE-SHIFT CYLINDER	
TWO STAGE VISTA.....	10-40

TABLE OF CONTENTS (Continued)

DESCRIPTION	PAGE
F (continued)	
FORKS	
HOOK TYPE.....	12-10
PIN TYPE.....	12-8
FRONT DRIVE GEAR COVER	
TIER I ENGINE.....	2-8
FRONT GEAR COVER	
TIER II ENGINE.....	2-72
FRONT GEAR TRAIN COVER	
TIER II ENGINE.....	2-49
FUEL DRAIN	
TIER I ENGINE.....	2-9
FUEL FILTER	
TIER I ENGINE.....	2-14
TIER II ENGINE.....	2-63
FUEL FILTER PLUMBING	
TIER II ENGINE	
⇒S/N A214E-01950A.....	2-65
S/N A214E-01951A⇒.....	2-66
FUEL INJECTION PUMP	
TIER II ENGINE.....	2-67
FUEL PUMP MOUNT	
TIER II ENGINE.....	2-68
FUEL SHUT-OFF VALVE	
TIER I ENGINE.....	2-16
FUEL SYSTEM	
TIER I ENGINE.....	3-2
TIER II ENGINE.....	3-6
G	
GEAR HOUSING	
TIER II.....	2-73
GENERAL TRUCK.....	1-2
H	
HEADER HOSE	
EMPTY CONTAINER HANDLER	
⇒S/N A214E-1578.....	11-118
S/N A214E01963A⇒.....	11-124
S/N A214E1579⇔S/N A214E01962A.....	11-120
TWO STAGE VISTA.....	10-28
HEATER.....	1-40
HEATER CONTROL.....	1-44
HEATER PLUMBING	
TIER I ENGINE.....	2-25
HOOD	
EMPTY CONTAINER HANDLER.....	1-34
FORK LIFT TRUCK.....	1-36
HYDRAULIC	
CONTROL VALVE	

TABLE OF CONTENTS (Continued)

DESCRIPTION	PAGE
H (continued)	
ATTACHING PARTS	9-40
MAIN	9-42
DIRECTIONAL CONTROL VALVE	
EMPTY CONTAINER HANDLER	9-46
HYDRAULIC CONTROL	
⇒S/N A214E1842Z	9-32
S/N A214E1843Z⇒	9-36
HYDRAULIC LINES	
AUXILIARY	
FORK LIFT TRUCK.....	9-29
CONTROL VALVE	9-26
⇒S/N A214E-1806.....	9-20
S/N A214E-1807⇒.....	9-24
LIFT	
FORK LIFT TRUCK.....	9-30
SUPPLY AND RETURN	
EMPTY CONTAINER HANDLER	9-4
FORK LIFT TRUCK	
D/B 12/2002⇒	9-16
⇒D/B 12/2002	9-12
HYDRAULIC PILOT CONTROL SUPPLY VALVE	
EMPTY CONTAINER HANDLER.....	9-54
HYDRAULIC PILOT CONTROL VALVE	
EMPTY CONTAINER HANDLER.....	9-52
HYDRAULIC PUMP.....	9-58
HYDRAULIC RELIEF VALVE	
TILT	
⇒S/N A214E02029B.....	9-56
HYDRAULIC SOLENOID VALVE	
LIFT AND LOWERING INTERRUPT	
EMPTY CONTAINER HANDLER	
S/N A214E01752X⇒	9-50
HYDRAULIC SOLENOID VALVE ATTACHING PARTS	
LIFT AND LOWERING INTERRUPT	
EMPTY CONTAINER HANDLER	
S/N A214E01752X⇒	9-48
HYDRAULIC SYSTEM	
EMPTY CONTAINER HANDLER	
SHEET 1 OF 2	
⇒S/N A214E-1806	11-26
SHEET 2 OF 2	
⇒S/N A214E-1806	11-28
SERIES 582	
S/N A214E02078B⇒.....	11-106
SERIES 588	
S/N A214E02078B⇒.....	11-108
SPREADER 572	
S/N A214E-1807⇒.....	11-38
SPREADER 573	
S/N A214E-1807⇒.....	11-42

TABLE OF CONTENTS (Continued)

DESCRIPTION	PAGE
H (continued)	
SPREADER 575	
S/N A214E-1807⇒.....	11-56
SPREADER 578	
S/N A214E-1807⇒.....	11-46
TILT CYLINDER	
EMPTY CONTAINER HANDLER.....	9-74
FORK LIFT TRUCK.....	9-76
HYDRAULIC TANK	
⇒S/N A214E-1534.....	9-60
S/N A214E-1535⇒.....	9-62
I	
INJECTOR	
TIER II ENGINE.....	2-42
INNER MAST	
EMPTY CONTAINER HANDLER.....	11-8
TWO STAGE VISTA.....	10-6
INSTRUMENT PANEL	
SHEET 1 OF 2.....	4-18
SHEET 2 OF 2.....	4-22
L	
LABELS	
EXTERIOR	
EMPTY CONTAINER HANDLER.....	1-64
FORK LIFT TRUCK.....	1-66
INTERIOR.....	1-62
LIFT CYLINDER	
EMPTY CONTAINER HANDLER.....	11-18
H14.00-16.00XM	
TWO STAGE VISTA	
D/B 09/2004⇒.....	10-20
⇒D/B 09/2004.....	10-18
H18.00-20.00XM	
TWO STAGE VISTA	
D/B 09/2004⇒.....	10-26
⇒D/B 09/2004.....	10-22
LIFT CYLINDER ATTACHING PARTS	
EMPTY CONTAINER HANDLER.....	11-20
LIFT PUMP	
TIER I ENGINE.....	2-15
TIER II.....	2-70
LIFT PUMP PLUMBING	
TIER II ENGINE.....	2-71
LIFTING BRACKET	
TIER I ENGINE.....	2-17
TIER II ENGINE.....	2-78
LIGHT CONTROLS.....	4-28
LIGHTS	

TABLE OF CONTENTS (Continued)

DESCRIPTION	PAGE
L (continued)	
EMPTY CONTAINER HANDLER.....	4-30
FORK LIFT TRUCK	4-34
ROTATING BEACON	4-38
M	
MAIN LIFT	
EMPTY CONTAINER HANDLER	
⇒S/N A214E-1654.....	11-10
S/N A214E-1655⇒.....	11-14
TWO STAGE VISTA	
SHEET 1 OF 2	10-10
SHEET 2 OF 2	10-14
MAST INSTALLATION	
EMPTY CONTAINER HANDLER.....	11-130
TWO STAGE VISTA.....	10-32
O	
OIL COOLER	
TIER I ENGINE	2-18
OIL COOLER AND ATTACHING PARTS	
EMPTY CONTAINER HANDLER	
TIER II ENGINE	9-8
FORK LIFT TRUCK	
TIER II ENGINE	9-10
OIL FILLER ARRANGEMENT	
S/N A214E-01951A⇒.....	2-82
TIER I ENGINE.....	2-20
TIER II ENGINE	
⇒S/N A214E-01950A	2-80
OIL FILTER	
TIER II ENGINE.....	2-84
OIL LEVEL GAUGE	
TIER I ENGINE.....	2-19
TIER II ENGINE.....	2-55
OIL PAN	
TIER II ENGINE.....	2-53
OIL PUMP	
TIER II ENGINE.....	2-56
OPERATOR COMPARTMENT	
WITH CAB	
SHEET 1 OF 3	1-18
SHEET 2 OF 3	1-20
SHEET 3 OF 3	1-24
WITHOUT CAB.....	1-16
OUTER MAST	
EMPTY CONTAINER HANDLER.....	11-6
TWO STAGE VISTA.....	10-2

TABLE OF CONTENTS (Continued)

DESCRIPTION	PAGE
P	
PARK BRAKE ⇒S/N A214E01994B (H14-16XM FLT), ⇒S/N A214E02000B (h14-16XM ECH), ⇒S/N A214E02033A (H18-20XM FLT).....	6-18
PISTON AND CONNECTING ROD TIER II ENGINE.....	2-34
PRE-CLEANER ASSEMBLY	2-107
R	
RADIATOR PLUMBING TIER II ENGINE.....	2-86
ROCKER LEVERS TIER II ENGINE.....	2-38
S	
SEAT HIGH BACK KAB.....	1-54
SENSORS SERIES 582 S/N A214E02078B⇒.....	11-110
SIDE-SHIFT CYLINDER CONTAINER HANDLING ATTACHMENT ⇒S/N A214E-1806.....	11-68
S/N A214E-1807⇒.....	11-70
SIDE-SHIFT CYLINDER ASSEMBLY SERIES 588 S/N A214E02078B⇒.....	11-116
SINGLE HORIZONTAL TWIST LOCK HEAD ASSEMBLY CONTAINER HANDLING ATTACHMENT (573) S/N A214E-1807⇒.....	11-44
SLAVE BEAM EMPTY CONTAINER HANDLER S/N A214E-1807⇒.....	11-36
SOLENOID VALVE TWO STAGE VISTA.....	10-42
SPRING LOADED HOOK HEAD ASSEMBLY CONTAINER HANDLING ATTACHMENT (575) S/N A214E-1807⇒.....	11-58
STARTER TIER I ENGINE.....	2-21
STARTING MOTOR TIER II ENGINE.....	2-87
STEERING AXLE.....	7-18
STEERING CONTROL BLOCK VALVE ⇒D/B 10/2003.....	7-16
STEERING CYLINDER.....	7-10
OPTIONAL.....	7-12
STEERING HOUSING AND CONTROL UNIT.....	7-2
STEERING HYDRAULICS EMPTY CONTAINER HANDLER.....	7-6

TABLE OF CONTENTS (Continued)

DESCRIPTION	PAGE
S (continued)	
FORK LIFT TRUCK	7-8
STEERING PUMP	7-14
SUSPENSION SEAT	
GRAMMER HIGH BACK	
SHEET 1 OF 2	1-56
SHEET 2 OF 2	1-60
T	
TENSIONER	
TIER II ENGINE	2-98
THERMOSTAT	
TIER I ENGINE	2-10
TIER II ENGINE	2-59
THERMOSTAT HOUSING	
TIER I ENGINE	2-23
THROTTLE	
TIER I ENGINE	3-8
THROTTLE PEDAL	
ELECTRONIC	
TIER II ENGINE	3-16
TIER I ENGINE	
⇒D/B 11/2002	3-12
D/B 12/2002⇒	3-14
TILT CYLINDER	
EMPTY CONTAINER HANDLER	9-78
FORK LIFT TRUCK	9-80
TORQUE CONVERTER OIL COOLER	
TIER II ENGINE	2-90
TRANSMISSION	
CLUTCH PACK	
SHEET 1 OF 3	5-28
SHEET 2 OF 3	5-32
SHEET 3 OF 3	5-36
CONTROL VALVE	
⇒S/N A214E-1615	5-20
S/N A214E-1616⇒	5-24
CONTROL VALVE ATTACHING PARTS	5-18
INCHING PEDAL	
⇒S/N A214E-1615	5-42
INCHING VALVE	
⇒S/N A214E-1615	5-44
INPUT SHAFT	5-14
SHIFT LEVER	5-40
TORQUE CONVERTER	5-17
TRANSMISSION ATTACHING PARTS	5-2
OIL FILTER	5-8
TRANSMISSION HYDRAULIC LINES	
⇒S/N A214E-1615	5-10
S/N A214E-1616⇒	5-12

TABLE OF CONTENTS (Continued)

DESCRIPTION	PAGE
T (continued)	
TRANSMISSION MOUNT AND ATTACHING PARTS	5-6
TURBOCHARGER	
TIER II ENGINE	2-85
TURBOCHARGER PLUMBING	
TIER II ENGINE	2-92
TWIST LOCK CYLINDER	
EMPTY CONTAINER HANDLER	
⇒S/N A214E-1806.....	11-52
S/N A214E-1807⇒.....	11-54
V	
VALVE ASSEMBLY	
END BEAM	
CONTAINER HANDLING ATTACHMENT	
S/N A214E-1807⇒	11-62
HEAD	
SERIES 582	
S/N A214E02078B⇒	11-89
LH, EXTENSION, TWISTLOCK	
SERIES 582 AND 588	
S/N A214E02078B⇒	11-85
PILOT CHECK	
SERIES 582 AND 588	
S/N A214E02078B⇒	11-86
RH, EXTENSION, TWISTLOCK	
SERIES 582 AND 588	
S/N A214E02078B⇒	11-84
SIDE-SHIFT	
SERIES 582 AND 588	
S/N A214E02078B⇒	11-87
SPREADER	
CONTAINER HANDLING ATTACHMENT	
S/N A214E-1807⇒	11-60
SPREADER 575	
CONTAINER HANDLING ATTACHMENT	
S/N A214E-1807⇒	11-61
VALVE COVER	
TIER I ENGINE	2-24
TIER II ENGINE	2-94
VALVE TAPPET	
TIER II ENGINE	2-44
VERTICAL END BEAM	
EMPTY CONTAINER HANDLER	
⇒S/N A214E-1806.....	11-24
VERTICAL TWIST LOCK HEAD ASSEMBLY	
CONTAINER HANDLING ATTACHMENT (578)	
S/N A214E-1807⇒	11-48
VIBRATION DAMPER	
TIER II ENGINE	2-48

TABLE OF CONTENTS (Continued)

DESCRIPTION	PAGE
W	
WATER INLET CONNECTION	
TIER I ENGINE	2-26
TIER II ENGINE	2-95
WATER OUTLET CONNECTION	
TIER I ENGINE	2-27
TIER II ENGINE	2-96
WATER PUMP	
TIER I ENGINE	2-28
TIER II ENGINE	2-97
WEAR PADS	
CONTAINER HANDLING ATTACHMENT (570)	
S/N A214E-1807⇒	11-34
END BEAM	
SERIES 582 AND 588	
S/N A214E02078B⇒	11-92
EXTENSION BEAM	
SERIES 582 AND 588	
S/N A214E02078B⇒	11-94
WEAR PLATES	
EMPTY CONTAINER HANDLER	
⇒S/N A214E-1806	11-22
WHEEL AND TIRE	
BIAS TIRE.....	12-2
RADIAL TIRE.....	12-4
SOLID TIRE	
SMOOTH.....	12-6
WITH TREAD	12-5
WINDSHIELD WASHER	1-46
WIRE HARNESS	
ATTACHMENT CONTROL	
S/N A214E-1651⇔S/N A214E-1806.....	4-44
SHEET 1 OF 2	
⇒S/N A214E-1650	4-40
SHEET 2 OF 2	
⇒S/N A214E-1650	4-42
ATTACHMENT CONTROL SWITCH	
S/N A214E-1807⇒.....	4-46
ATTACHMENT LIGHTS	
S/N A214E-1807⇒.....	4-48
CAB	
⇒S/N A214E-1797	4-50
S/N A214E-1798⇒.....	4-52
CARRIAGE CONTROL SWITCH	
S/N A214E-1403⇒.....	4-54
CHASSIS	
EMPTY CONTAINER HANDLER.....	4-56
FORK LIFT TRUCK.....	4-58
EMPTY CONTAINER HANDLER	
⇒S/N A214E-1806.....	11-132
ENGINE	
⇒S/N A214E-1718.....	4-60

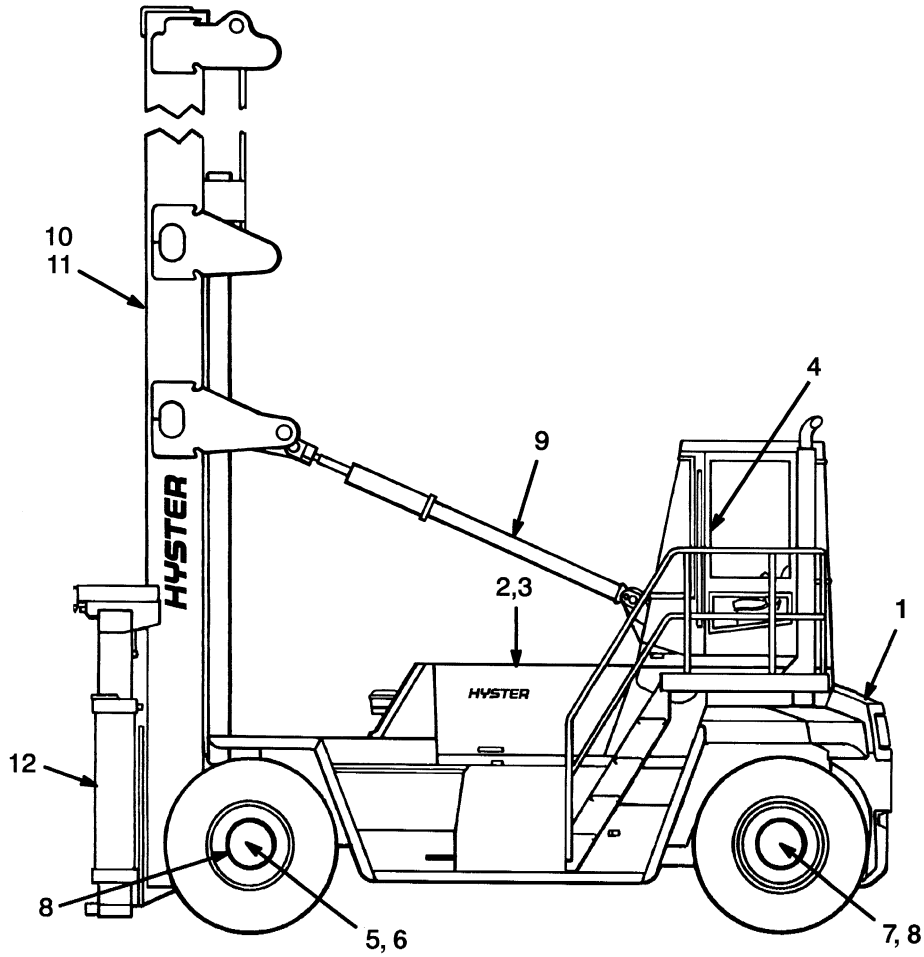
TABLE OF CONTENTS (Continued)

DESCRIPTION	PAGE
W (continued)	
S/N A214E-1719⇒.....	4-62
FRONT END EQUIPMENT	
EMPTY CONTAINER HANDLER	
⇒S/N A214E-1806	4-64
S/N A214E-1807⇒	4-66
FORK LIFT TRUCK.....	4-68
FRONT LIGHTS.....	4-69
HOOK ATTACHMENT	
S/N A214E-1807⇒.....	11-135
HYDRAULIC	
EMPTY CONTAINER HANDLER	
⇒S/N A214E-1806	4-70
S/N A214E-1807⇒	4-72
FORK LIFT TRUCK.....	4-74
MODULE	
⇒S/N A214E-1797	4-76
S/N A214E-1798⇒.....	4-77
OPERATOR COMPARTMENT	
SHEET 1 OF 2	4-78
SHEET 2 OF 2	4-80
OPERATOR COMPARTMENT TO MAST LIGHT JUMPER	
FORK LIFT TRUCK.....	4-82
REAR LIGHT	4-83
ROTATING BEACON	4-84
STEERING POD.....	4-86
SWITCH	
WARNING	4-89
SWITCH LIGHTS.....	4-88
TRANSMISSION.....	4-90
⇒S/N A214E-1615.....	4-92
S/N A214E-1616⇒.....	4-94
TURN SIGNAL.....	4-96
TWIST LOCK	
S/N A214E-1807⇒.....	11-134
WINDSHIELD WASHER.....	4-97
WORK LIGHTS.....	4-98
EMPTY CONTAINER HANDLER.....	4-99
FORK LIFT TRUCK.....	4-100
WORK LIGHTS EXTENSION	
FORK LIFT TRUCK.....	4-101
WIRING ACCESSORIES	
TIER II ENGINE.....	2-99

**SECTION 1
FRAME**

DESCRIPTION	PAGE
COUNTERWEIGHTS	1-48
COVERS	
EMPTY CONTAINER HANDLER.....	1-28
FORK LIFT TRUCK	1-30
DOORS	1-26
FENDERS	
EMPTY CONTAINER HANDLER.....	1-52
FLOOR PLATES AND COVERS	
EMPTY CONTAINER HANDLER.....	1-4
FORK LIFT TRUCK	
SHEET 1 OF 2	1-8
SHEET 2 OF 2	1-12
GENERAL TRUCK	1-2
HEATER	1-40
HEATER CONTROL.....	1-44
HOOD	
EMPTY CONTAINER HANDLER.....	1-34
FORK LIFT TRUCK	1-36
LABELS	
EXTERIOR	
EMPTY CONTAINER HANDLER.....	1-64
FORK LIFT TRUCK.....	1-66
INTERIOR.....	1-62
OPERATOR COMPARTMENT	
WITH CAB	
SHEET 1 OF 3	1-18
SHEET 2 OF 3	1-20
SHEET 3 OF 3	1-24
WITHOUT CAB.....	1-16
SEAT	
HIGH BACK	
KAB	1-54
SUSPENSION SEAT	
GRAMMER HIGH BACK	
SHEET 1 OF 2	1-56
SHEET 2 OF 2	1-60
WINDSHIELD WASHER	1-46

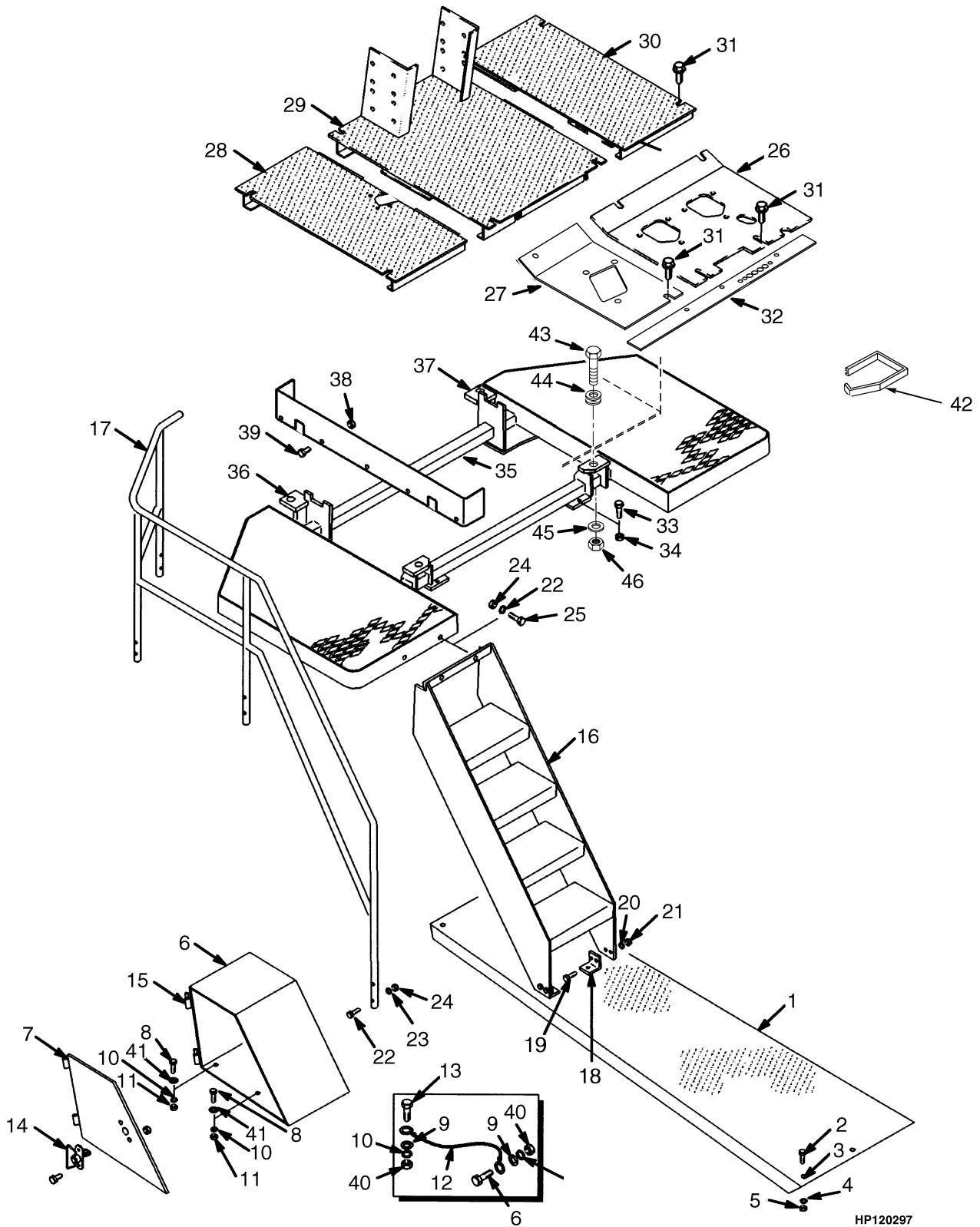
GENERAL TRUCK (Figure 1-1)



HP990033

ITEM	PART NO.	DESCRIPTION	QTY
1	Frame (☞ Figure 1-2)	1
2	Engines (☞ Figure 2-85)	1
3	Fuel System (☞ Figure 3-1)	1
4	Electrical System (☞ Figure 4-1)	1
5	Transmission (☞ Figure 5-1)	1
6	Drive Axle (☞ Figure 6-1)	1
7	Steering System (☞ Figure 7-2)	1
8	Brake System (☞ Figure 8-1)	1
9	Hydraulic System (☞ Figure 9-1)	1
10	Mast-Two Stage Limited Free-Lift (☞ Figure 10-1)	1
11	Mast-Empty Container Handler (☞ Figure 11-1)	1
12	Options (☞ Figure 12-1)	1

FLOOR PLATES AND COVERS (Figure 1-2) EMPTY CONTAINER HANDLER



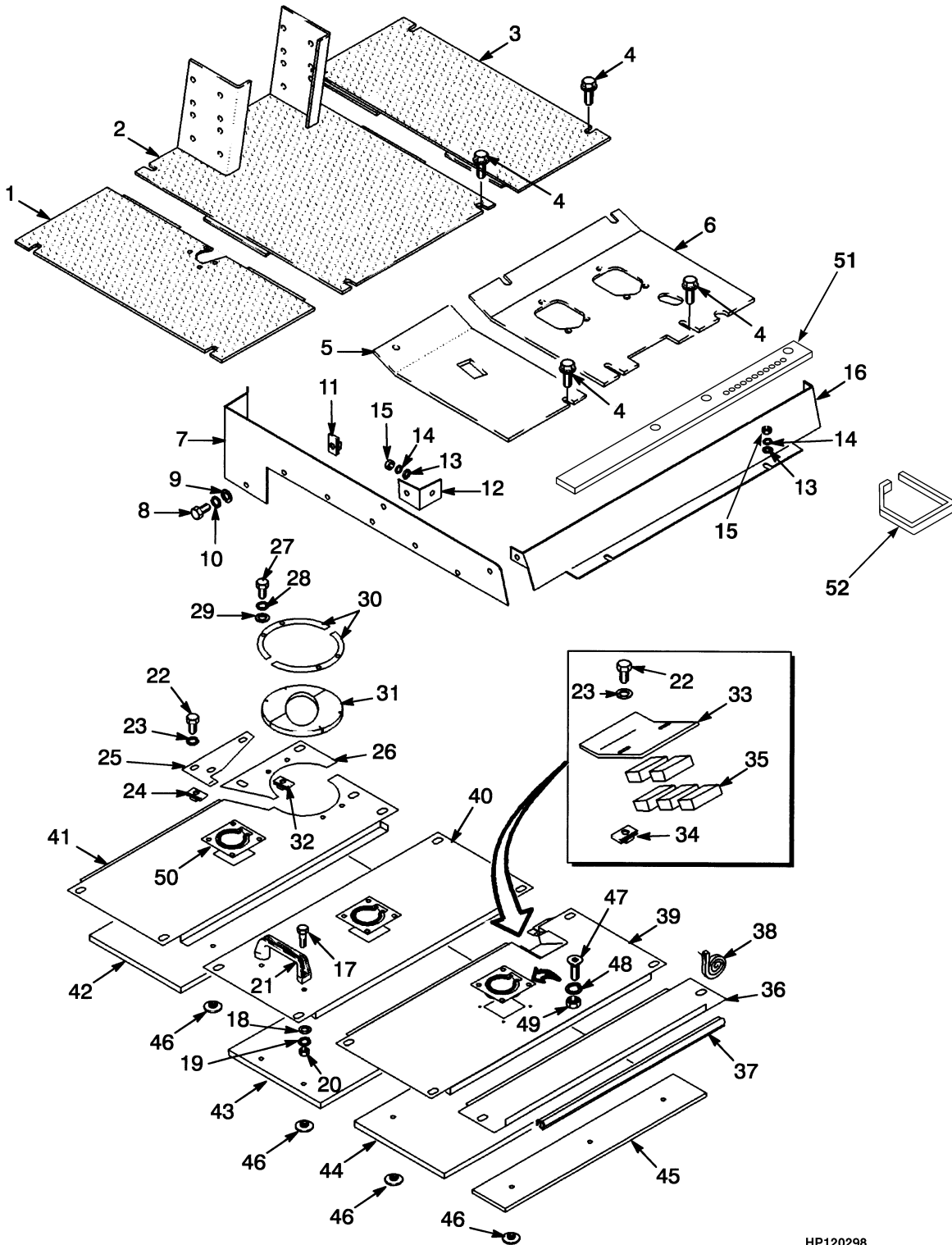
**FLOOR PLATES AND COVERS
EMPTY CONTAINER HANDLER**

ITEM	PART NO.	DESCRIPTION	QTY
1	1541792	Running Board (RH)	1
1	1541791	Running Board (LH).....	1
2	246001	Capscrew.....	14
3	216735	Grommet.....	14
4	320162	Washer	42
5	300937	Locknut	14
6	1382005	Battery Box	1
6	1382017	Storage Box	1
7	1382007	Door (LH).....	1
7	1382018	Door (RH)	1
8	287854	Capscrew.....	8
9	320159	Washer	8
10	292682	Lockwasher.....	8
11	136692	Nut	8
12	1456622	Cable	2
13	296172	Capscrew.....	4
14	1391416	Latch	2
15	1301700	Bushing (Brass).....	4
16	1519654	Steps	2
17	1373739	Handrail (LH)	1
17	1373740	Handrail (RH).....	1
18	1382612	Bracket (Tier I Engine).....	4
19	302335	Capscrew.....	12
20	320159	Washer	12
21	136692	Nut	12
22	302349	Capscrew.....	8
23	320162	Washer	8
24	300937	Locknut	14
25	302343	Capscrew.....	6
26	1382649	Floorplate (LH Front)	1
27	1355113	Floorplate (RH Front) (Tier I Engine).....	1
27	1508108	Floorplate (RH Front) (Tier II Engine).....	1
28	1336914	Floorplate (RH).....	1
29	1465374	Floorplate (Center)	1
30	1325557	Floorplate (LH).....	1
31	329067	Screw.....	15
32	1336912	Seal (Tier I Engine).....	1
32	1508250	Seal (Tier II Engine).....	1
33	292563	Capscrew.....	4
34	316828	Nut	4
35	1545279	Platform	1
36	1373747	Plate (LH)	1
37	1373746	Plate (RH).....	1
38	316826	Nut	10
39	292514	Capscrew.....	10
40	316826	Nut	4
41	320160	Washer	8
42	1457097	Molding (Rubber).....	2
43	292535	Capscrew.....	4
44	1325519	Mount (Cab).....	4

FLOOR PLATES AND COVERS EMPTY CONTAINER HANDLER

ITEM	PART NO.	DESCRIPTION	QTY
45	300939	Washer	4
46	300937	Locknut	4

FLOOR PLATES AND COVERS (Figure 1-3) FORK LIFT TRUCK SHEET 1 OF 2



HP120298

FLOOR PLATES AND COVERS FORK LIFT TRUCK SHEET 1 OF 2

ITEM	PART NO.	DESCRIPTION	QTY
1	1336914	Floorplate (RH).....	1
2	1465374	Floorplate (Center).....	1
3	1325557	Floorplate (LH).....	1
4	329067	Screw.....	15
5	1355113	Floorplate (RH Front) (Tier I Engine).....	1
5	1508108	Floorplate (RH Front) (Tier II Engine).....	1
6	1382649	Floorplate (LH Front).....	1
7	a 1393855	Plate (RH).....	1
7	b 1393853	Cover (RH).....	1
7	a 1393854	Cover (LH).....	1
7	b 1393852	Cover (LH).....	1
8	a 136749	Capscrew.....	18
8	b 136749	Capscrew.....	16
9	a 320158	Washer.....	18
9	b 320158	Washer.....	16
10	a 292681	Lockwasher.....	18
10	b 292681	Lockwasher.....	16
11	a 1384661	Nut.....	18
11	b 1384661	Nut.....	16
12	1393856	Bracket.....	2
13	320160	Washer.....	4
14	292682	Lockwasher.....	4
15	136692	Nut.....	4
16	a 1393858	Cover (Front).....	1
16	b 1393850	Cover (Front).....	1
17	292501	Capscrew.....	2
18	320156	Washer.....	2
19	292680	Lockwasher.....	2
20	136687	Nut.....	2
21	362030	Handle.....	1
22	136749	Capscrew.....	20
23	320158	Washer.....	20
24	1385535	Nut.....	18
25	1451594	Plate.....	1
26	1456189	Plate.....	1
27	296155	Capscrew.....	4
28	292679	Lockwasher.....	4
29	320155	Washer.....	4
30	1451555	Plate.....	2
31	1451522	Cover (Exhaust).....	2
32	1364542	Clip Nut.....	4
33	1451559	Bracket.....	1
34	1384661	Nut.....	2
35	217549	Foam Tape.....	AR
36	1451783	Cover.....	1
37	1393871	Seal.....	1
38	261158	Foam Tape.....	AR
39	1451717	Cover.....	1
40	1393872	Cover.....	1
41	1451782	Cover.....	1

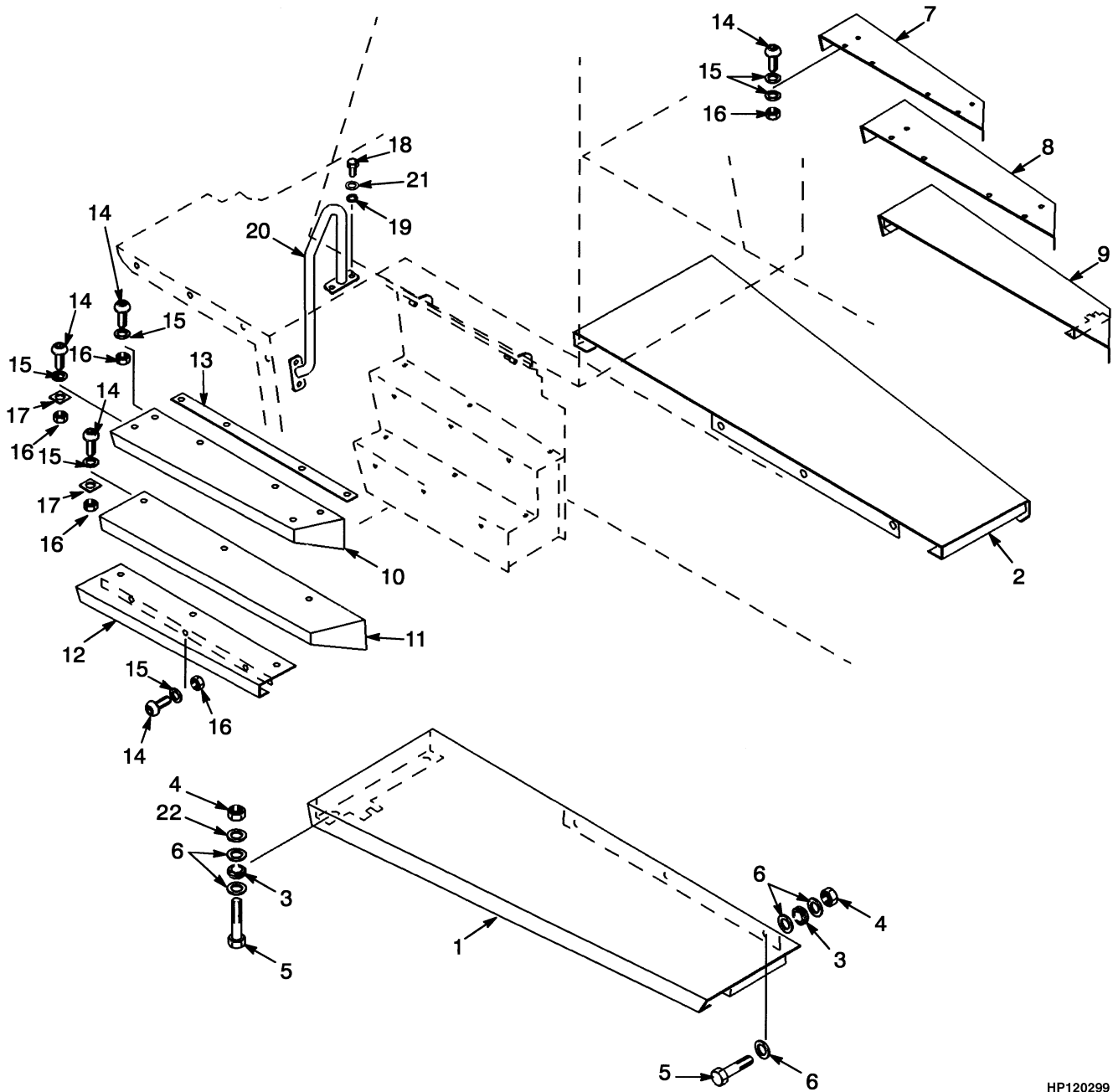
FLOOR PLATES AND COVERS FORK LIFT TRUCK SHEET 1 OF 2

ITEM	PART NO.	DESCRIPTION	QTY
42	1451530	Insulation	1
43	1451529	Insulation	1
44	1451528	Insulation	1
45	1451527	Insulation	1
46	1361087	Button	10
47	296150	Capscrew	12
48	320154	Washer	12
49	815597	Nut	12
50	1451521	Handle	3
51	1336912	Seal (Tier I Engine).....	1
51	1508250	Seal (Tier II Engine).....	1
52	1457097	Molding (Rubber) (Not Illustrated)	2

FOOTNOTES:

- a** H16.00XM
- b** H18.00XM

FLOOR PLATES AND COVERS (Figure 1-4) FORK LIFT TRUCK SHEET 2 OF 2



HP120299

FLOOR PLATES AND COVERS FORK LIFT TRUCK SHEET 2 OF 2

ITEM	PART NO.	DESCRIPTION	QTY
1	ae	1450769 Running Board (LH).....	1
1	af	1541789 Running Board (LH).....	1
1	be	1450783 Running Board (LH).....	1
1	bf	1541787 Running Board (LH).....	1
2	ae	1450770 Running Board (RH).....	1
2	af	1541790 Running Board (RH).....	1
2	be	1450784 Running Board (RH).....	1
2	bf	1541788 Running Board (RH).....	1
3		216735 Grommet.....	10
4		300937 Locknut.....	10
5		246001 Capscrew.....	10
6	e	320162 Washer.....	30
6	f	320162 Washer.....	34
7	ac	1452202 Step.....	1
7	ad	1518324 Step.....	1
7	bc	1452197 Step.....	1
7	bd	1518171 Step.....	1
8	ac	1452203 Step.....	1
8	ad	1518323 Step.....	1
8	bc	1452198 Step.....	1
8	bd	1518100 Step.....	1
9	ac	1454945 Step.....	1
9	ad	1518322 Step.....	1
9	bc	1454949 Step.....	1
9	bd	1518099 Step.....	1
10	ae	1451497 Step (Top).....	1
10	af	1554855 Step (Top).....	1
10	bf	1451484 Step (Top).....	1
10	bf	1556307 Step (Top).....	1
11	ae	1451494 Step.....	1
11	ag	1554857 Step.....	1
11	ah	1589321 Step.....	1
11	be	1451489 Step.....	1
11	bg	1556306 Step.....	1
11	bh	1589330 Step.....	1
12	ae	1451503 Step.....	1
12	ag	1554858 Step.....	1
12	ah	1589323 Step.....	1
12	be	1451500 Step.....	1
12	bg	1556304 Step.....	1
12	bh	1589328 Step.....	1
13	a	1451478 Plate.....	1
13	b	1451477 Plate.....	1
14	d	296174 Capscrew.....	27
15	d	320160 Washer.....	30
16	d	316826 Nut.....	27
17		1451012 Spacer.....	8
18		287860 Capscrew.....	8
19		316826 Nut.....	8
20		1452277 Handrail (LH).....	1

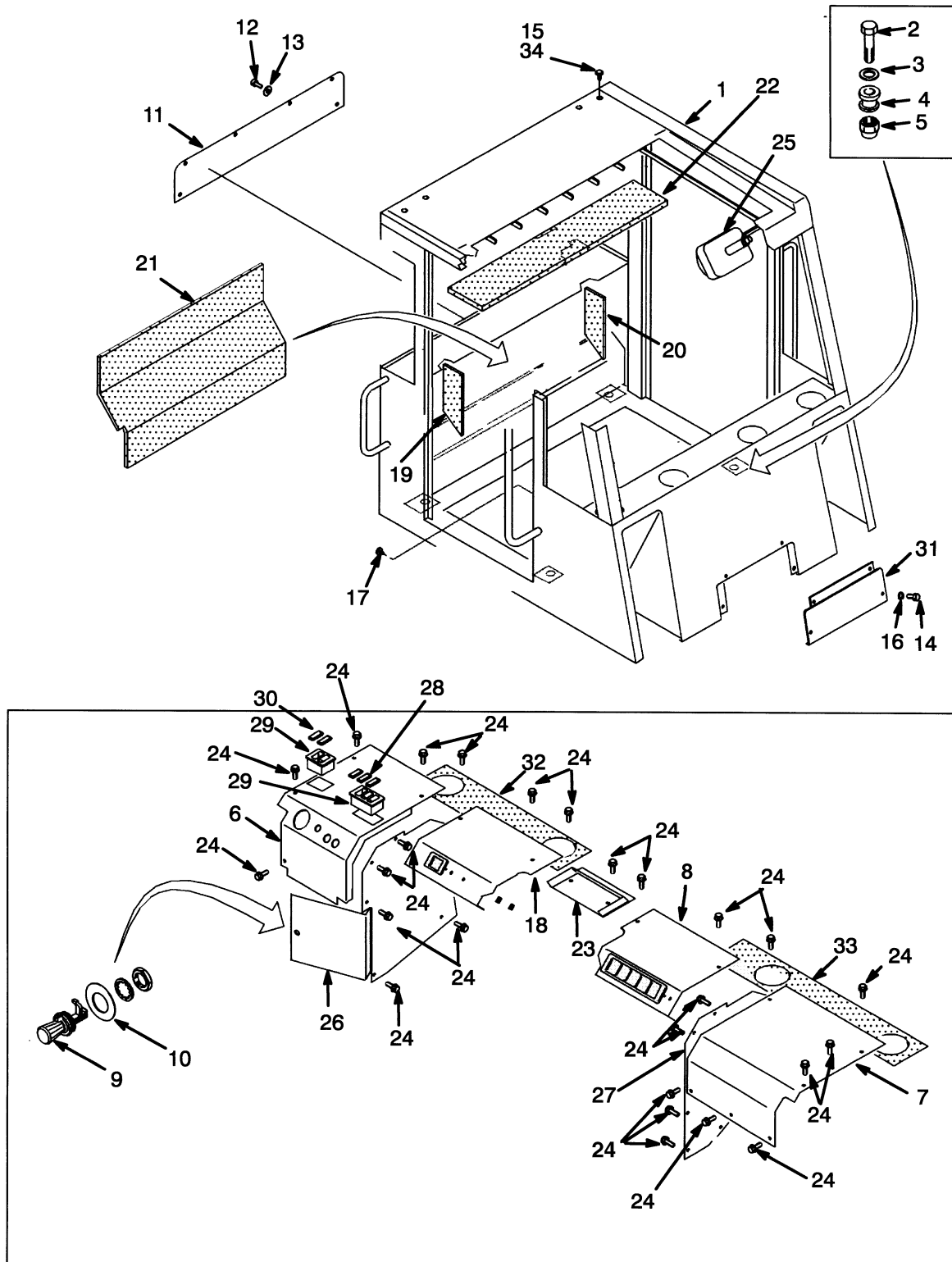
FLOOR PLATES AND COVERS FORK LIFT TRUCK SHEET 2 OF 2

ITEM	PART NO.	DESCRIPTION	QTY
20	1452278	Handrail (RH).....	1
21	320159	Washer	16
22	320161	Washer	8

FOOTNOTES:

- a H16.00XM
- b H18.00XM
- c ⇒ S/N A214E01842Z
- d S/N A214E01843Z↔S/N A214E02062E
- e ⇒ S/N A214E02062E
- f S/N A214E02063E ⇒
- g S/N A214E02063E↔S/N A214E02120C
- h S/N A214E02121C ⇒

OPERATOR COMPARTMENT (Figure 1-5) WITHOUT CAB



HP120300



Suggest:

For more complete manuals. Please go to the home page.

<https://www.ebooklibonline.com>

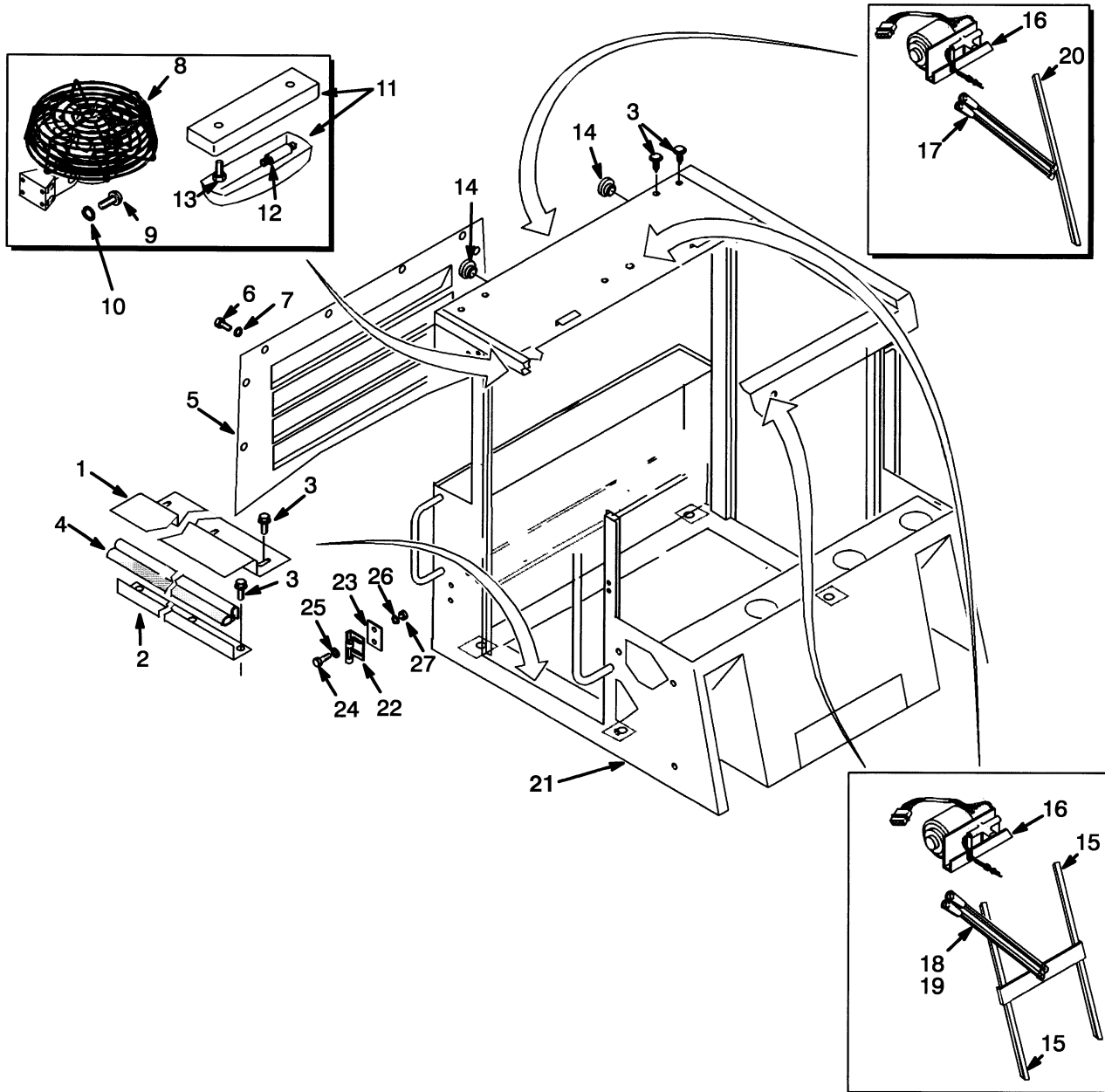
If the above button click is invalid. Please download this document first, and then click the above link to download the complete manual.

Thank you so much for reading

**OPERATOR COMPARTMENT
WITHOUT CAB**

ITEM	PART NO.	DESCRIPTION	QTY
1	1373718	Operator Compartment.....	1
2	292535	Capscrew.....	4
3	300939	Washer	4
4	1325519	Mount (Cab).....	4
5	300937	Locknut	4
6	1451065	Cover (LH) (Tier I Engine)	1
6	1521834	Cover (LH) (Tier II Engine)	1
7	1325597	Cover (RH).....	1
8	1393754	Cover	1
9	1311288	Latch	1
10	1311287	Washer	1
11	1453421	Plate	1
12	1384659	Capscrew.....	6
13	1324577	Washer	6
14	369242	Capscrew.....	4
15	1307737	Fastener.....	4
16	375629	Washer	4
17	1304971	Fastener (Tier I Engine).....	2
18	1393755	Cover (Tier I Engine)	1
18	1507272	Cover (Tier II Engine)	1
19	1301263	Liner (LH Lower)	1
20	1301264	Liner (RH Lower)	1
21	1325623	Liner (Lower Center).....	1
22	1325624	Liner (Top)	1
23	1301189	Cover	1
24	1301177	Screw.....	31
25	1301286	Mirror	2
26	1311388	Door.....	1
27	1301255	Panel (RH Access)	1
28	376947	Bezel.....	1
29	376949	Cover	5
30	376948	Bezel.....	2
31	1393833	Plate	1
32	1301293	Gasket (LH)	1
33	1301292	Gasket (RH).....	1
34	280472	Sealant	AR

OPERATOR COMPARTMENT (Figure 1-6) WITH CAB SHEET 1 OF 3



HP120319

<https://www.ebooklibonline.com>

Hello dear friend!

Thank you very much for reading.

Enter the link into your browser.

The full manual is available for immediate download.

<https://www.ebooklibonline.com>