

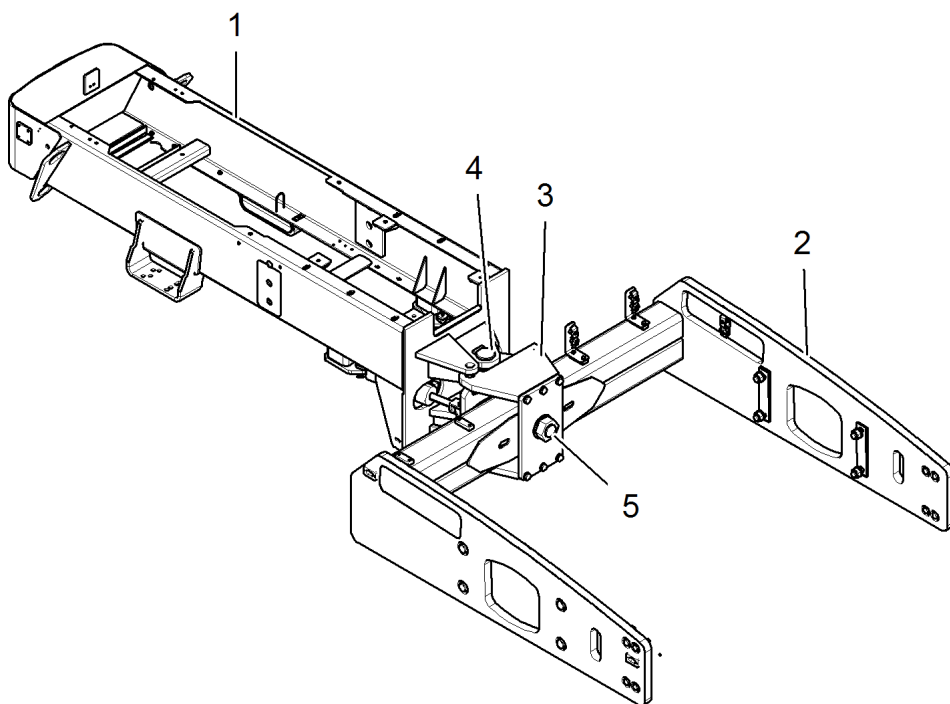
Document Title: <b>Frame, description</b>	Function Group: <b>711</b>	Information Type: <b>Service Information</b>	Date: <b>2015/10/27</b>
Profile: <b>COS, SD110 [GB]</b>			

## Frame, description

The machine is built with rear frame assembly and front frame assembly, connected by a swivel frame with two articulation pins and one oscillation pin.

The rear frame is a welded assembly on which hydraulic tank, fuel tank, battery compartment, control valves, engine assembly with propulsion pump, vibration pump, steering pump and axle with tyre assembly are mounted.

The front frame is a welded assembly on which drum assembly and scraper bar are mounted.



V1076126

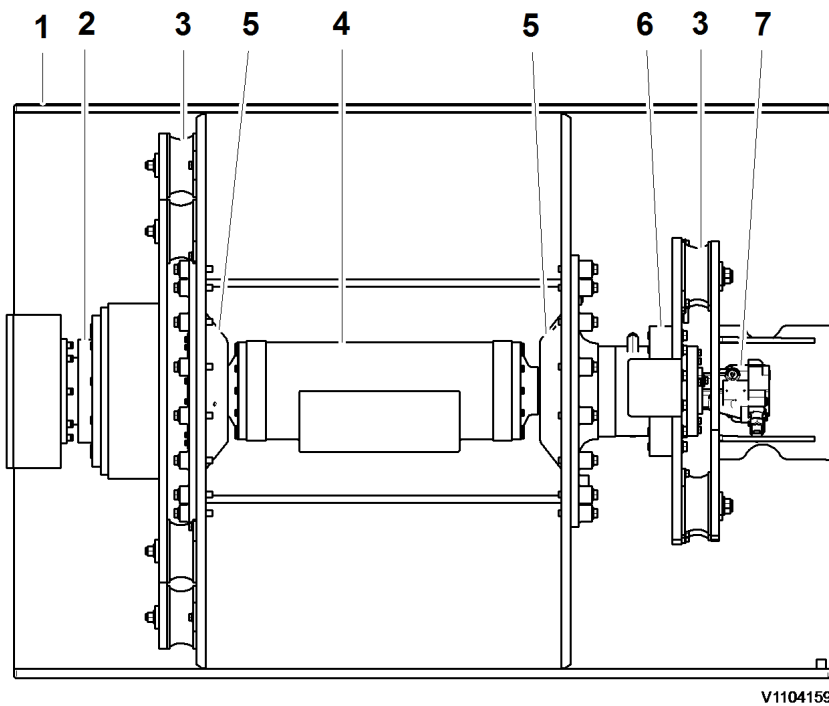
**Figure 1**

1. Rear frame
2. Front frame
3. Swivel frame
4. Articulation pin
5. Oscillation pin

Document Title: <b>Drum, description</b>	Function Group: <b>777</b>	Information Type: <b>Service Information</b>	Date: <b>2015/10/27</b>
Profile: <b>COS, SD110 [GB]</b>			

## Drum, description

Drum fitted with the machine is a smooth drum. Vibration is transmitted to the drum by an eccentric assembly which is mounted inside the drum and is powered by a hydraulic vibration motor. Amplitude and frequency of drum vibration is controlled through vibration control lever.



V1104159

**Figure 1**  
**Drum assembly**

1. Drum
2. Torque hub assembly / Drum drive motor
3. Shock mount
4. Eccentric assembly
5. Bearing housing
6. Carrier housing
7. Vibration motor

Document Title: <b>Drum assembly, removing</b>	Function Group: <b>777</b>	Information Type: <b>Service Information</b>	Date: <b>2015/10/27</b>
Profile: <b>COS, SD110 [GB]</b>			

## Drum assembly, removing

Op nbr 777-029

### **NOTICE**

Always handle oils and other environmentally hazardous fluids in an environmentally safe manner.

### **CAUTION**

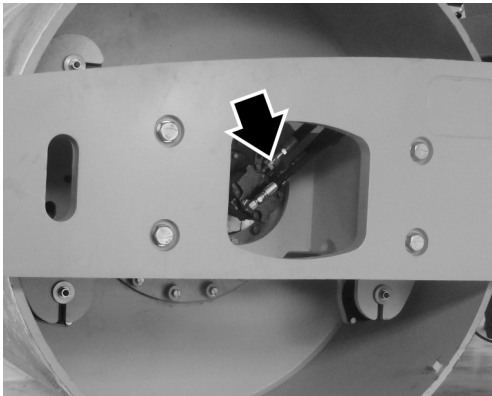
Maintain greatest possible cleanliness during all work on the hydraulic system.

1. Place the machine in the Service Position. Refer to [191 Service position 1](#).

### **NOTICE**

When a hose has been disconnected, plug both the hose and the connection immediately. The hoses should be marked for correct connection.

2. Disconnect the hose connections from the vibration motor.



V1108065

**Figure 1**  
**Hose connections to vibration motor**

3. Disconnect the hose connections from the drive motor.

### **NOTE!**

This step applies for drum drive option only.

**<https://www.ebooklibonline.com>**

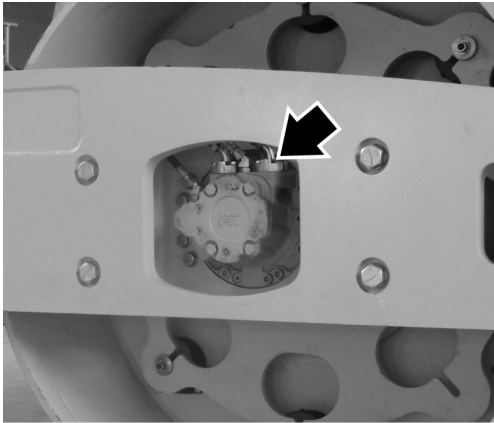
Hello dear friend!

Thank you very much for reading.

Enter the link into your browser.

The full manual is available for immediate download.

**<https://www.ebooklibonline.com>**



V1108063

**Figure 2**  
**Hose connections to drum drive motor**



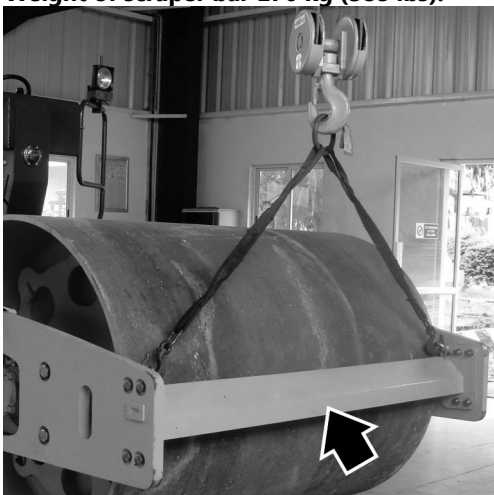
**WARNING**  
Only use lifting devices with adequate capacity.



**WARNING**  
The parts are heavy. Take appropriate safety cautions when handling them.

4. Secure the scraper bar with a suitable lifting device.

**Weight of scraper bar 176 kg (388 lbs).**



V1091736

**Figure 3**  
**Scraper bar**

5. Remove the mounting screws of the scraper bar and remove the shims.

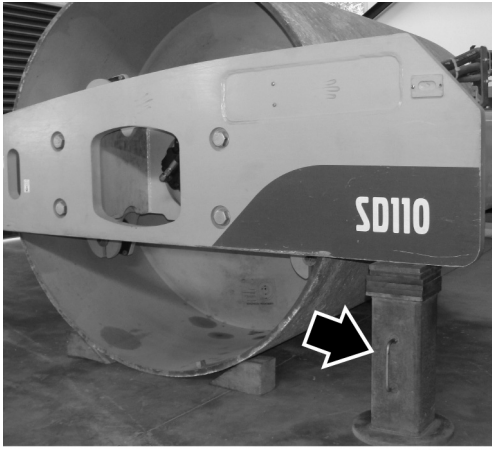
**NOTE!**

Two persons are required for this procedure.

**NOTE!**

Identify and retain the shims for installation.

6. Remove the scraper bar.
7. Lift the frame using a suitable lifting device to take the weight off the shock mounts.
8. Place suitable support stands on both sides of the frame.



V1091739

**Figure 4**  
**Support stand**

9. Choke the drum with suitable wedges.
10. Remove the drum assembly mounting screws at vibration motor side and remove the shims.

**NOTE!**

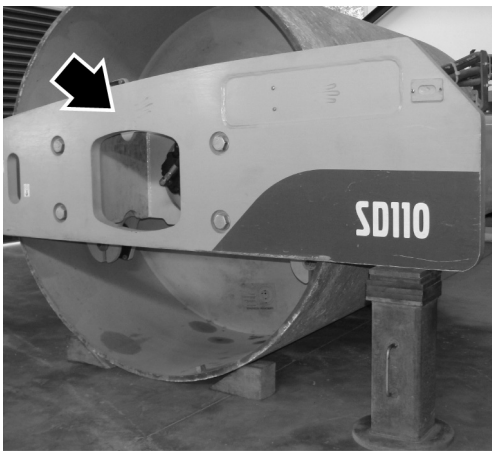
Two persons are required for this procedure.

**NOTE!**

Use a suitable jacking device between carrier plate and drum frame, if required.

**NOTE!**

Identify and retain the shims for installation.



V1108062

**Figure 5**  
**Vibration motor side**

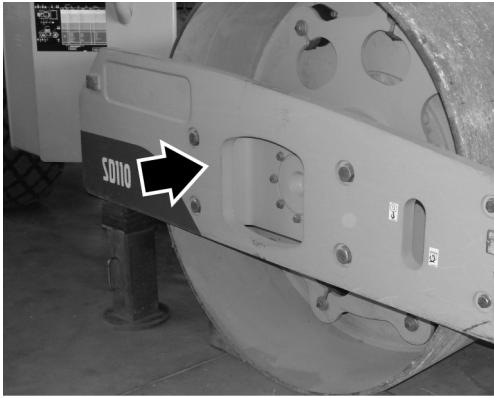
11. Remove the drum assembly mounting screws at drum drive side.

**NOTE!**

Two persons are required for this procedure.

**NOTE!**

Make sure that the wedges or chocks are in position to avoid the roll out of drum.



V1108061

**Figure 6**  
**Drum drive side**

12. Remove the wedges or chocks and carefully roll the drum assembly out and away from the frame.  
**Weight of the drum assembly is 3984 kg (8783 lbs)**

Document Title: <b>Drum assembly, installing</b>	Function Group: <b>777</b>	Information Type: <b>Service Information</b>	Date: <b>2015/10/27</b>
Profile: <b>COS, SD110 [GB]</b>			

## Drum assembly, installing

Op nbr 777-030

### NOTICE

Always handle oils and other environmentally hazardous fluids in an environmentally safe manner.

#### NOTE!

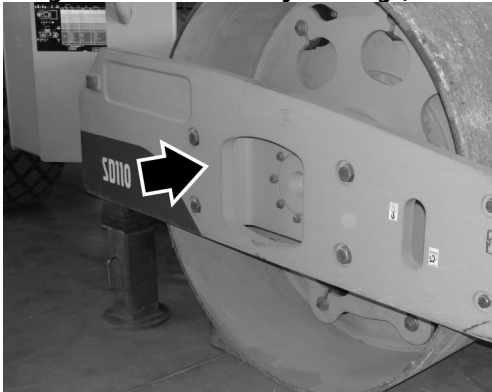
All O-rings are recommended to be replaced with new.

#### NOTE!

If required, calculate the shim thickness needed between drum assembly and drum frame and between scraper bar and drum assembly. Refer to [777 Instructions for shimming the equipment joints](#).

1. Roll the drum assembly into the drum frame. Choke the drum assembly.

**Weight of drum assembly 3984 kg (8783 lbs).**



V1108061

**Figure 1**

#### **Drum drive mounting plate to drum frame assembly**

2. Assemble the drum drive mounting bracket with shims to drum frame at drum drive side. Secure with the mounting screws.

#### NOTE!

Do not install the nuts at this moment.

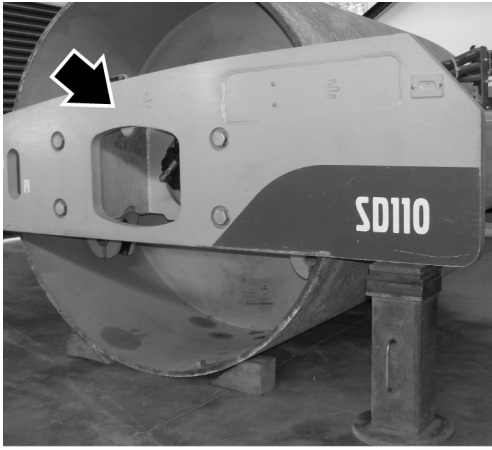
3. Assemble the shock mount bracket with shims to the drum frame at vibration motor side. Secure with the mounting screws.

#### NOTE!

Jack the carrier plate and drum frame with a suitable jacking device, if required for shimming.

#### NOTE!

Do not install the nuts at this moment.



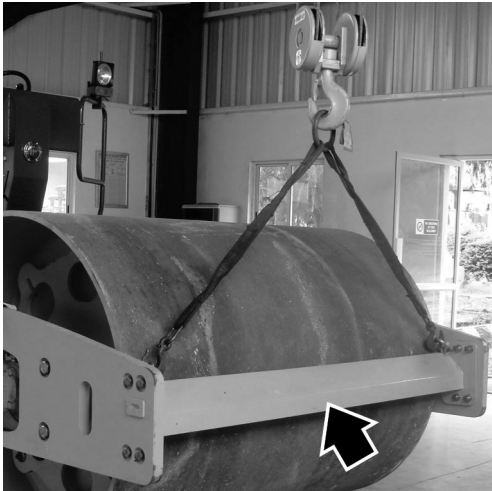
V1108062

**Figure 2**  
**Shock mount bracket to the drum frame at vibration motor side**

4. Install the scraper bar using a suitable lifting device. Add suitable thickness shims. Secure with the mounting screws.  
**Weight of scraper bar 176 kg (388 lbs).**

**NOTE!**

Do not install the nuts at this moment.



V1091736

**Figure 3**  
**Scraper bar**

5. Install the nuts and torque tighten the drum assembly mounting screws at vibration and drum drive sides. Refer to [030 Critical mounting torques](#).

**NOTE!**

Apply thread locking component to mounting screws.

**NOTE!**

Two persons are required for this procedure.

6. Install the nuts and torque tighten the scraper bar mounting screws. Refer to [030 Critical mounting torques](#).

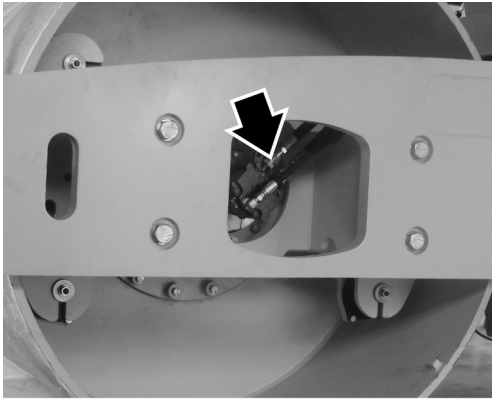
**NOTE!**

Apply thread locking component to mounting screws.

**NOTE!**

Two persons are required for this procedure.

7. Connect the hose connections to the vibration motor.



V1108065

**Figure 4**  
**Hose connections to vibration motor**

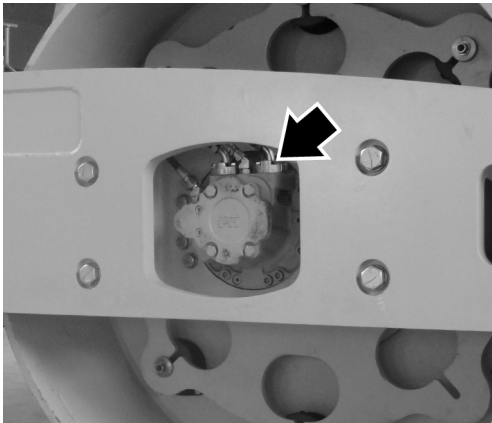
8. Connect the hose connections to the drum drive motor.

**NOTE!**

Check the condition of O-rings. Replace if necessary.

**NOTE!**

This step applies only for drum drive machines.



V1108063

**Figure 5**  
**Hose connections to drum drive motor**



**Only use lifting devices with adequate capacity.**

9. Lift the frame using a suitable lifting device and remove the support stands.



V1091739

**Figure 6**  
**Support stands**

10. Start the engine and test run the machine.
11. Check for the leakage.
12. Shut down the engine.
13. Place the machine back in service.

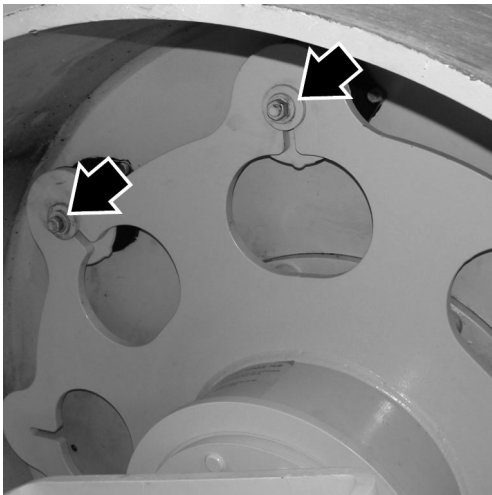
Document Title: <b>Drum drive, removing</b>	Function Group: <b>777</b>	Information Type: <b>Service Information</b>	Date: <b>2015/10/27</b>
Profile: <b>COS, SD110 [GB]</b>			

## Drum drive, removing

Op nbr 988-087

[88830202 Lifting tool](#)

1. Place the machine in service position. Refer to [191 Service position](#).
2. Remove drum assembly from the machine. Refer to [777 Drum assembly, removing](#).
3. Retain two diagonally opposite drive plate mounting nuts and washers and remove remaining drive plate mounting nuts and washers.



V1077319

**Figure 1**  
**Drive plate mounting nuts and washers**



**Only use lifting devices with adequate capacity.**



**The parts are heavy. Take appropriate safety cautions when handling them.**

4. Assemble **88830202 – Drive plate assembly lifting tool** to the drum drive motor mounting bracket and support the drive plate assembly with a suitable lifting device.  
**Weight of 88830202 – Drive plate assembly lifting tool 38 kg (84 lbs).**  
**Weight of the drum drive (with torque hub) assembly 274 kg (604 lbs)./**  
**Weight of the drum drive (with drum motor) assembly 450 kg (990 lbs).**



V1077325

**Figure 2**  
**Tool assembled to the drum drive motor mounting bracket**

5. Remove the retained two diagonally opposite drive plate mounting nuts and washers.

**! WARNING**

**Only use lifting devices with adequate capacity.**

**! WARNING**

**The parts are heavy. Take appropriate safety cautions when handling them.**

6. Remove the drum drive assembly from the drum assembly.
7. Place the drum drive assembly on safe place.
8. Disassemble the **88830202 – Drive plate assembly lifting tool**.

Document Title: <b>Drum drive, installing</b>	Function Group: <b>777</b>	Information Type: <b>Service Information</b>	Date: <b>2015/10/27</b>
Profile: <b>COS, SD110 [GB]</b>			

## Drum drive, installing

Op nbr 988-088

[88830202 Lifting tool](#)

### **WARNING**

Only use lifting devices with adequate capacity.

### **WARNING**

The parts are heavy. Take appropriate safety cautions when handling them.

1. Assemble **88830202 – Drive plate assembly lifting tool** to the drum drive assembly.  
**Weight of 88830202 – Drive plate assembly lifting tool 38 kg (84 lbs).**  
**Weight of the drum drive (with torque hub) assembly 274 kg (604 lbs)./**  
**Weight of the drum drive (with drum motor) assembly 450 kg (990 lbs).**



V1095925

**Figure 1**  
**Tool assembled to drum drive assembly**

2. Install the drum drive assembly on shock mounts using a suitable lifting device.



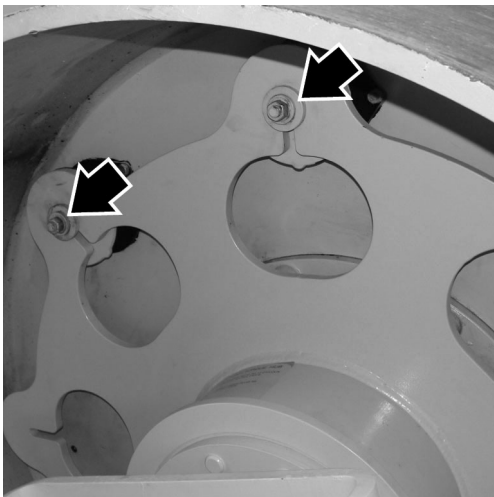
V1077325

**Figure 2**  
**Drum drive assembly mounting**

3. Install the nuts and washers to secure drum drive assembly with drum assembly.

**NOTE!**

Apply thread locking component to shock mount screws



V1077319

**Figure 3**  
**Shock mount mounting nuts and washers**

4. Torque tighten the nuts. Refer to [030 Critical mounting torques](#).
5. Remove **88830202 – Drive plate assembly lifting tool** .
6. Install the drum assembly in to the drum frame. Refer to [777 Drum assembly, installing](#).
7. Start the engine and test run the machine.
8. Check for oil leakage.
9. Shut down the engine.
10. Place the machine back in service.

Document Title: <b>Torque hub, removing</b>	Function Group: <b>777</b>	Information Type: <b>Service Information</b>	Date: <b>2015/10/27</b>
Profile: <b>COS, SD110 [GB]</b>			

## Torque hub, removing

Op nbr 777-011

[88830202 Lifting tool](#)

### NOTICE

Always handle oils and other environmentally hazardous fluids in an environmentally safe manner.

### ! WARNING

The parts are heavy. Take appropriate safety cautions when handling them.

### ! WARNING

Only use lifting devices with adequate capacity.

1. Place the machine in service position. Refer to [191 Service position 1](#).
2. Remove the drum assembly from the machine. Refer to [777 Drum assembly, removing](#).
3. Remove the drum drive assembly from the drum assembly. Refer to [777 Drum drive, removing](#).

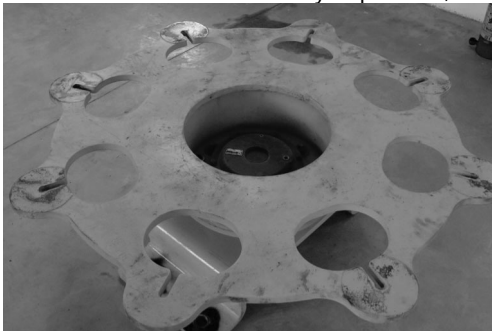
### ! WARNING

The parts are heavy. Take appropriate safety cautions when handling them.

### ! WARNING

Only use lifting devices with adequate capacity.

4. Place the drum drive assembly in position, with drive plate facing upward.



V1077623

**Figure 1**  
**Drive plate facing upward**

5. Remove torque hub mounting nuts from drive plate.



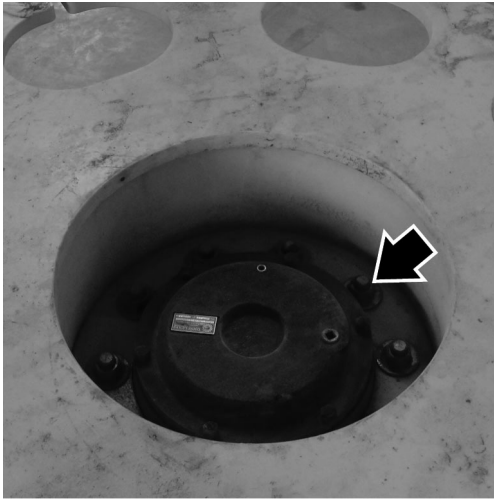
**Suggest:**

**For more complete manuals. Please go to the home page.**

**<https://www.ebooklibonline.com>**

**If the above button click is invalid. Please download this document first, and then click the above link to download the complete manual.**

**Thank you so much for reading**



V1077624

**Figure 2**  
**Torque hub mounting nuts**



**Only use lifting devices with adequate capacity.**

- Using the lifting device, remove the drive plate from the torque hub. **Weight of the drum drive plate 160 kg (352 lbs).**

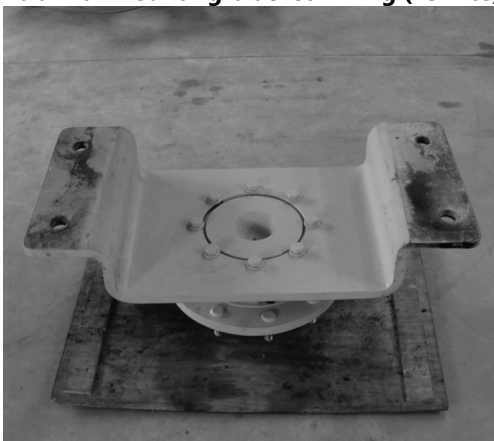


**The parts are heavy. Take appropriate safety cautions when handling them.**



**Only use lifting devices with adequate capacity.**

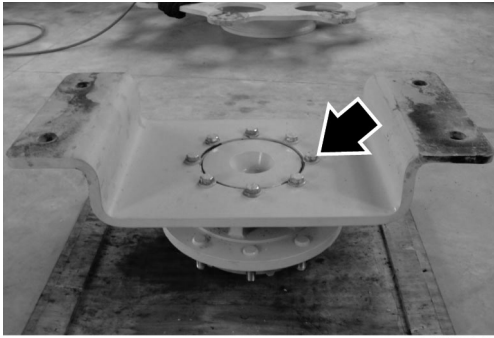
- Place the drum drive assembly in position with torque hub mounting plate facing upward. **Weight of the torque hub with mounting bracket 114 kg (251 lbs).**



V1077650

**Figure 3**  
**Torque hub mounting plate facing upward**

- Remove the mounting screws and nuts from torque hub mounting plate.



V1077645

**Figure 4**  
**Mounting screws and nuts**

**! WARNING**

The parts are heavy. Take appropriate safety cautions when handling them.

**! WARNING**

Only use lifting devices with adequate capacity.

9. Remove the torque hub mounting plate from the torque hub. **Weight of the torque hub mounting plate 56 kg (123 lbs).**

**<https://www.ebooklibonline.com>**

Hello dear friend!

Thank you very much for reading.

Enter the link into your browser.

The full manual is available for immediate download.

**<https://www.ebooklibonline.com>**