

Document Title: Foreword additional Service manual Demolition machine	Function Group: 000	Information Type: Service Information	Date: 2015/5/29
Profile: EXC, EC460B LC [GB]			

Foreword additional Service manual Demolition machine

This Service manual for Demolition machine built on base machines EC210B, EC240B, EC290B and EC360B.

NOTE!

This is an additional Service manual and should be used together with the Service manual for the base machine.

See Operator's manual for dimensions and weights for the complete machine. Service work on the machine must not be carried out before the instructions in Section "Safety" in both this Service manual and in the base machine Service manual.

For manual reference numbers, see current publications catalogue and SSI (Service Support Information). The operation numbers refer to "Time Guide". The instructions are based on the use of special tools, E-tools and generally available standard tools.

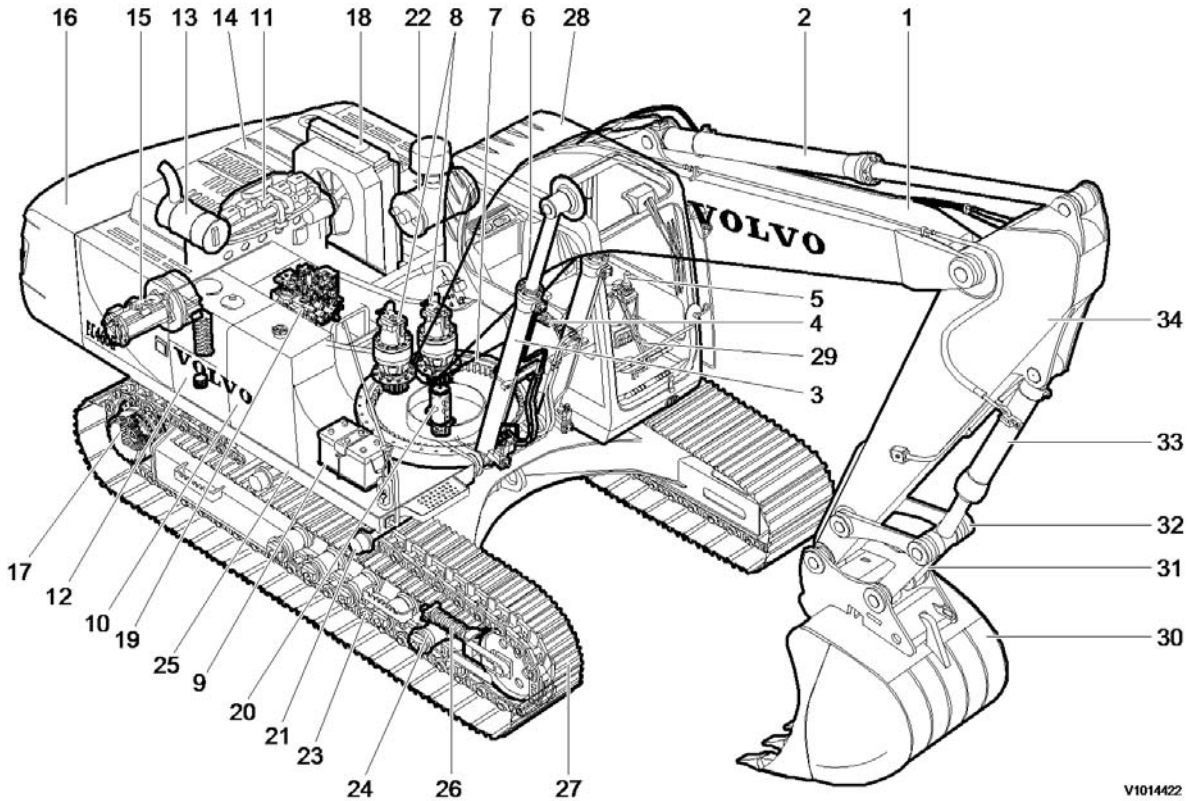
For supplementary information on special tools, see "Special tools." Drawings for E-tools can be found in Section 0 (08) General.

Volvo will not accept any responsibility if any lifting devices, tools or work methods other than those described in this publication are used.

The information and data given in this manual are valid at the time of publication. We reserve the right to modify specifications and equipment without prior notification.

Document Title: Component locations	Function Group: 000	Information Type: Service Information	Date: 2015/5/29
Profile: EXC, EC460B LC [GB]			

Component locations



V1014422

Figure 1
Location of components

1 Boom	13 Muffler	25 Bottom frame
2 Arm cylinder	14 Cowl	26 Recoil spring
3 Boom cylinder	15 Hydraulic pump	27 Idler
4 Switch board	16 Counterweight	28 Operator cab
5 Control lever	17 Track motor and gearbox	29 Travel lever
6 Operator seat	18 Radiator and oil cooler	30 Bucket
7 Slew gear	19 Main control valve	31 Connecting rod
8 Slew motor and gearbox	20 Center passage	32 Link
9 Battery	21 Top roller	33 Bucket cylinder
10 Fuel tank	22 Air cleaner	34 Arm
11 Engine	23 Track link	
12 Hydraulic tank	24 Bottom roller	

Document Title: Demolition machine, description	Function Group: 000	Information Type: Service Information	Date: 2015/5/29
Profile: EXC, EC460B LC [GB]			

Demolition machine, description

The demolition machine is based on a standard machine.

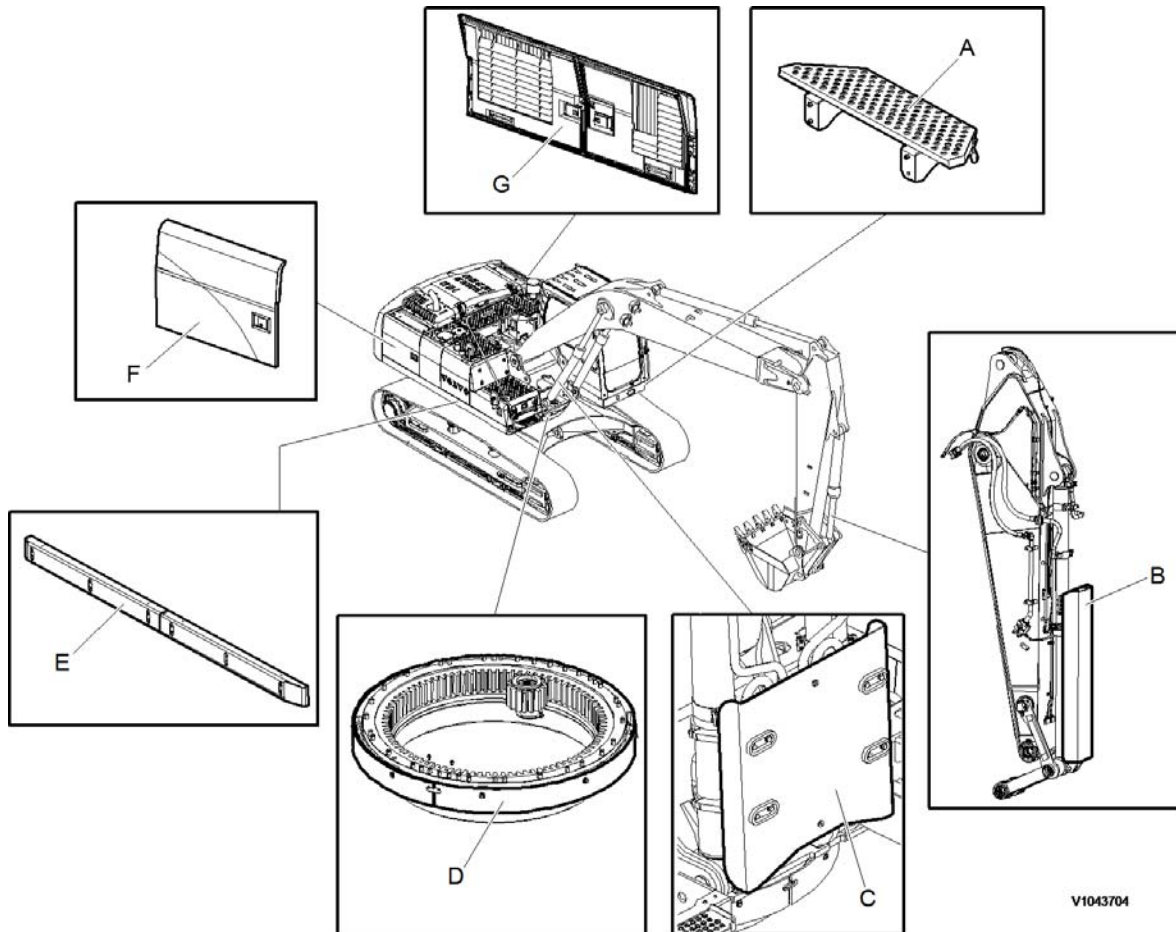
This demolition machine is composed of HD Side door reinforce, Slew ring gear protection cover, Upper frame side protection plate reinforce, Upper under cover reinforce, Boom cylinder protection plate and Bucket cylinder protection plate, Working and maintenance lamps, Top protection round pipe on rear and RH side.

See machine view [000 Machine view, demolition](#).

Document Title: Machine view, demolition	Function Group: 000	Information Type: Service Information	Date: 2015/5/29
Profile: EXC, EC460B LC [GB]			

[Go back to Index Page](#)

Machine view, demolition



V1043704

Figure 1
Machine view, demolition

- A. Step, Cabin
- B. Bucket cylinder protecting guard
- C. Boom cylinder protecting guard
- D. Swing ring gear cover
- E. Side impact protection
- F. Auxiliary hood, right side door
- G. Auxiliary hood, left side door

<https://www.ebooklibonline.com>

Hello dear friend!

Thank you very much for reading.

Enter the link into your browser.

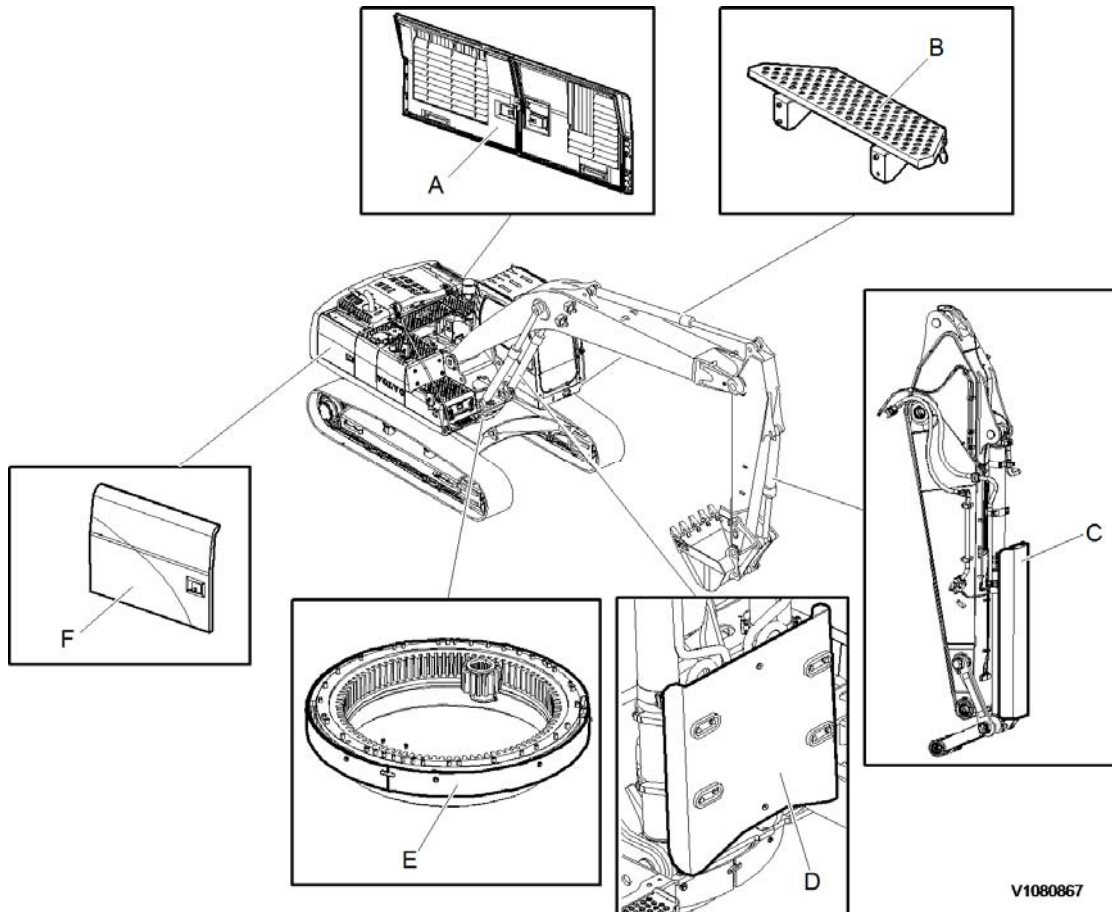
The full manual is available for immediate download.

<https://www.ebooklibonline.com>

Document Title: Machine view, demolition	Function Group: 000	Information Type: Service Information	Date: 2015/5/29
Profile: EXC, EC460B LC [GB]			

[Go back to Index Page](#)

Machine view, demolition



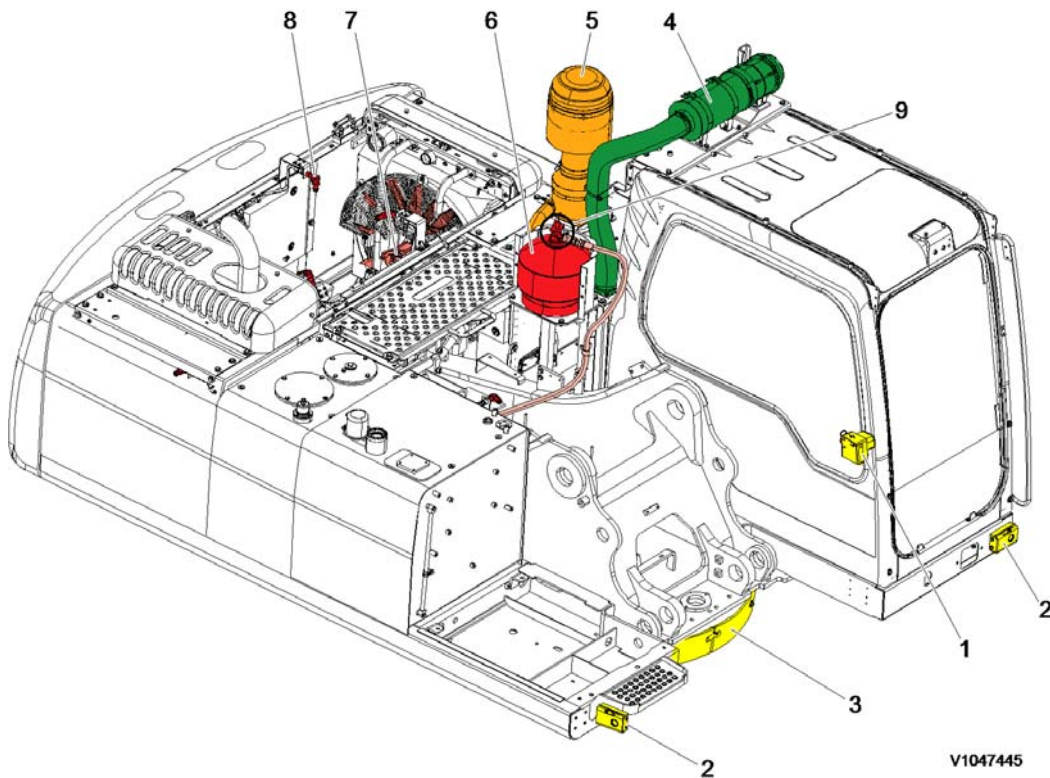
V1080867

Figure 1
Machine view, demolition

- A. Auxiliary hood, left side door
- B. Step, Cabin
- C. Bucket cylinder protecting guard
- D. Boom cylinder protecting guard
- E. Swing ring gear cover
- F. Auxiliary hood, right side door

Document Title: Machine view, waste handler	Function Group: 000	Information Type: Service Information	Date: 2015/5/29
Profile: EXC, EC460B LC [GB]			

Machine view, waste handler



V1047445

Figure 1
Components position on machine

1. Fire extinguisher fault indicator and battery disconnect switch
2. Manual actuation switch
3. Swing ring gear cover
4. Cab air filtering system
5. Dual stage pre-cleaner
6. Fire extinguisher system
7. Reversible cooling fan system
8. Nozzle: Engine section (4EA), Hydraulic (2EA)
9. Agent cylinder

Document Title: Measurement conversion tables	Function Group: 030	Information Type: Service Information	Date: 2015/5/29
Profile: EXC, EC460B LC [GB]			

Measurement conversion tables

Length

Unit	cm	m	km	in	ft	yd	mile
cm	1	0.01	0.00001	0.3937	0.03281	0.01094	0.000006
m	100	1	0.001	39.37	3.2808	1.0936	0.00062
km	100000	1000	1	39370.7	3280.8	1093.6	0.62137
in	2.54	0.0254	0.000025	1	0.08333	0.02777	0.000015
ft	30.48	0.3048	0.000304	12	1	0.3333	0.000189
yd	91.44	0.9144	0.000914	36	3	1	0.000568
mile	160930	1609.3	1.6093	63360	5280	1760	1

1 mm = 0.1 cm, 1 mm = 0.001 m

Area

Unit	cm2	m2	km2	a	ft2	yd2	in2
cm2	1	0.0001	-	0.000001	0.001076	0.000012	0.155000
m2	10000	1	0.000001	0.01	10.764	1.1958	1550.000
km2	-	1000000	1	10000	1076400	1195800	-
a	0.01	100	0.0001	1	1076.4	119.58	-
ft2	-	0.092903	-	0.000929	1	0.1111	144.000
yd2	-	0.83613	-	0.008361	9	1	1296.00
in2	6.4516	0.000645	-	-	0.006943	0.000771	1

1 ha = 100 a, 1 mile² = 259 ha = 2.59 km²

Volume

Unit	cm3 = cc	m3	Liter	in3	ft3	yd3
cm3 = m liter	1	0.000001	0.001	0.061024	0.000035	0.000001
m3	1000000	1	1000	61024	35.315	1.30796
Liter	1000	0.001	1	61.024	0.035315	0.001308
in3	16.387	0.000016	0.01638	1	0.000578	0.000021
ft3	28316.8	0.028317	28.317	1728	1	0.03704
yd3	764529.8	0.76453	764.53	46656	27	1

1 gal(US) = 3785.41 cm³ = 231 in³ = 0.83267 gal(US)

Weight

Unit	g	kg	t	oz	lb
g	1	0.001	0.000001	0.03527	0.0022
kg	1000	1	0.001	35.273	2.20459

t	1000000	1000	1	35273	2204.59
oz	28.3495	0.02835	0.000028	1	0.0625
lb	453.592	0.45359	0.000454	16	1
1 tonne(metric) = 1.1023 ton(US) = 0.9842 ton(UK)					

Pressure

Unit	kgf/cm ²	bar	Pa=N/m ²	kPa	lbf/in ²	lbf/ft ²
kgf/cm ²	1	0.98067	98066.5	98.0665	14.2233	2048.16
bar	1.01972	1	100000	100	14.5037	2088.6
Pa=N/m ²	0.00001	0.001	1	0.001	0.00015	0.02086
kPa	0.01020	0.01	1000	1	0.14504	20.886
lbf/in ²	0.07032	0.0689	6894.76	6.89476	1	144
lbf/ft ²	0.00047	0.00047	47.88028	0.04788	0.00694	1
1 kgf/cm ² = 735.56 Torr(mmHg) = 0.96784 atm						

Approximate conversions

SI	Conversion	Non-SI	Conversion	SI
Unit	Factor	Unit	Factor	Unit
Torque				
newton meter (N·m)	x 10.2	= kgf·cm	x 0.8664	= (lbf·in)
newton meter (N·m)	x 0.74	= lb·ft	x 1.36	= N·m
newton meter (N·m)	x 0.102	= kgf·m	x 7.22	= (lbf·ft)
Pressure (Pa = N/m²)				
kilopascal (kPa)	x 4.0	= in. H ₂ O	x 0.249	= kPa
kilopascal (kPa)	x 0.30	= in. Hg	x 3.38	= kPa
kilopascal (kPa)	x 0.145	= psi	x 6.89	= kPa
(bar)	x 14.5	= psi	x 0.069	= (bar)
(kgf/cm ²)	x 14.22	= psi	x 0.070	= (kgf/cm ²)
(newton/mm ²)	x 145.04	= psi	x 0.069	= (bar)
megapascal (MPa)	x 145	= psi	x 0.00689	= MPa
Power (W = J/s)				
kilowatt (kW)	x 1.36	= PS (cv)	x 0.736	= kW
kilowatt (kW)	x 1.34	= HP	x 0.746	= kW
kilowatt (kW)	x 0.948	= Btu/s	x 1.055	= kW
watt (W)	x 0.74	= ft·lb/s	x 1.36	= W
Energy (J = N·m)				
kilojoule (kJ)	x 0.948	= Btu	x 1.055	= kJ
joule (J)	x 0.239	= calorie	x 4.19	= J
Velocity and Acceleration				
meter per sec ² (m/s ²)	x 3.28	= ft/s ²	x 0.305	= m/s ²
meter per sec (m/s)	x 3.28	= ft/s	x 0.305	= m/s
kilometer per hour (km/h)	x 0.62	= mph	x 1.61	= km/h
Horse power/torque				
BHP x 5252 rpm = TQ (lb·ft)			TQ x rpm 5252 = B.H.P.	
Temperature				
°C = (°F - 32) / 1.8		°F = (°C x 1.8) + 32		
Flow Rate				

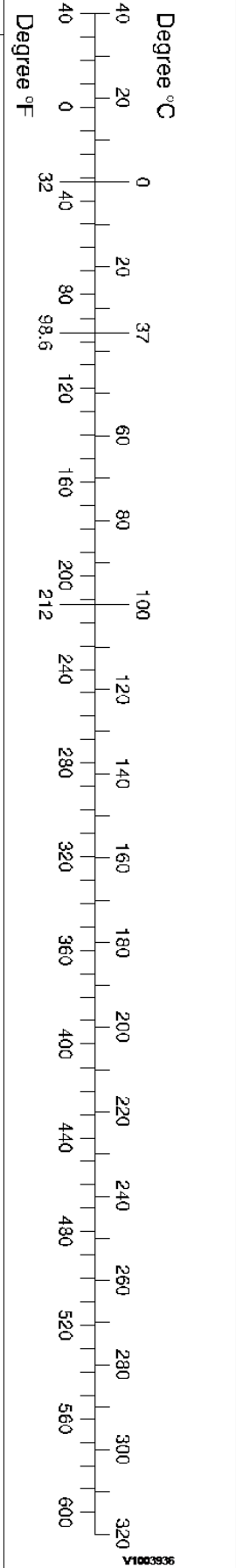
liter/min (dm³/min)

x 0.264

= US gal/min x 3.785

= liter/min

Note: () non-si unit



Document Title: Removable counterweight cylinder, specifications	Function Group: 030	Information Type: Service Information	Date: 2015/5/29
Profile: EXC, EC460B LC [GB]			

Removable counterweight cylinder, specifications

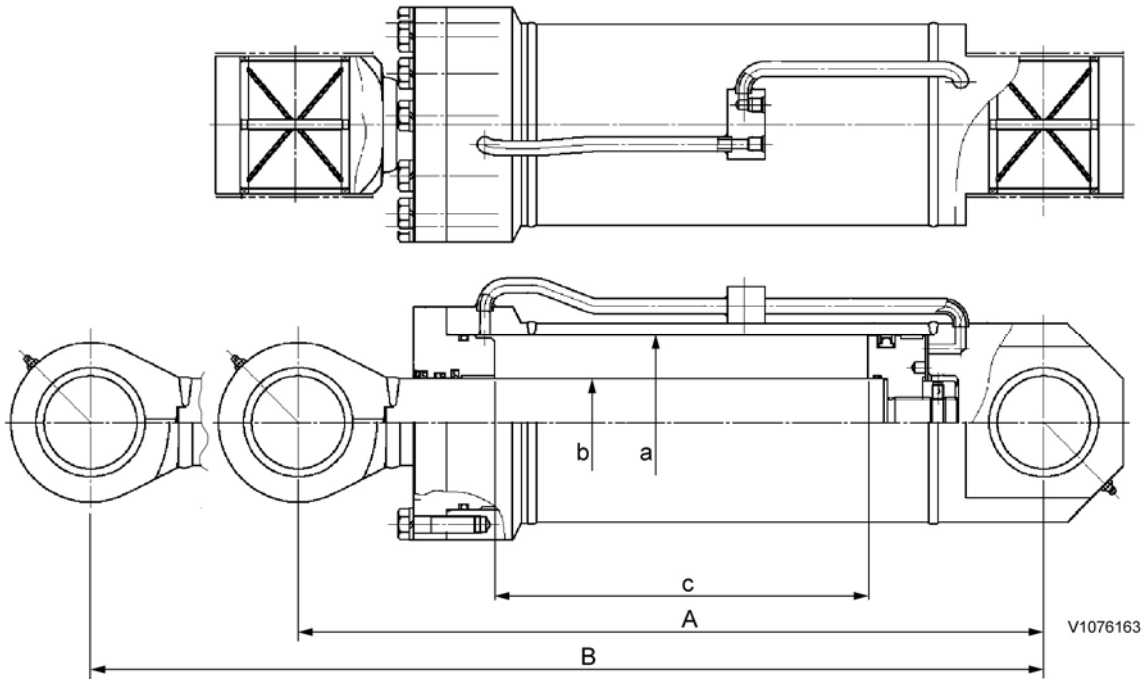


Figure 1
Removal counterweight cylinder



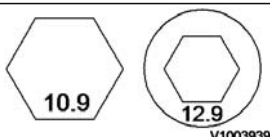
Item	Unit	Specifications
Removal cylinder	EA	1
Bore (a) × rod (b) × stroke (c)	mm (inch)	φ160 × φ80 × 3421.5 (φ6.30 × φ3.15 × 134.7)
Center to center distance of pins	Full retracted (A)	6832 (269)
	Full extended (B)	1025 (40.4)
Cushion	EA	–
Operating pressure		31.4 MPa (320 kgf cm ²) (4552 psi) (313.8 bar)
Weight		170 kg (374.8 lbs)

Document Title: Standard tightening torques	Function Group: 030	Information Type: Service Information	Date: 2015/5/29
Profile: EXC, EC460B LC [GB]			

Standard tightening torques

The following charts give the standard tightening torques of screws and nuts. Exceptions are given in each sections of "disassembly and assembly".

Tightening torque (meter)

Classification		4.8T			8.8T			10.9T, 12.9T		
Screw type										
Screw size		Tightening torque			Tightening torque			Tightening torque		
mm	inch	N m	kgf m	lbf ft	N m	kgf m	lbf ft	N m	kgf m	lbf ft
M 4	0.15	1.96 ±0.19	0.2 ±0.02	1.4 ±0.1	-	-	-	3.92 ±0.39	0.4 ±0.04	2.9 ±0.3
M 5	0.19	2.94 ±0.29	0.3 ±0.03	2.2 ±0.2	5.88 ±0.59	0.6 ±0.06	4.3 ±0.4	7.84 ±0.78	0.8 ±0.08	5.8 ±0.6
M 6	0.23	4.90 ±0.49	0.5 ±0.05	3.6 ±0.4	9.8 ±0.98	1.0 ±0.10	7.2 ±0.7	13.72 ±1.37	1.4 ±0.14	10.1 ±1
M 8	0.31	11.76 ±1.17	1.2 ±0.12	8.7 ±0.9	23.541 ±2.35	2.4 ±0.24	17.3 ±1.7	32.36 ±2.94	3.3 ±0.3	23.8 ±2.2
M 10	0.39	22.55 ±2.25	2.3 ±0.23	16.6 ±1.7	48.05 ±4.9	4.9 ±0.5	35.4 ±3.6	63.74 ±6.86	6.5 ±0.7	46.9 ±5.1
M 12	0.46	39.22 ±3.92	4.0 ±0.4	29 ±3	85.32 ±8.83	8.7 ±0.9	62.8 ±6.5	110.81 ±10.78	11.3 ±1.1	81.6 ±7.9
M 14	0.55	62.7 ±5.88	6.4 ±0.6	46 ±4	140.24 ±13.73	14.3 ±1.4	103.2 ±10.1	175.53 ±17.65	17.9 ±1.8	129.2 ±13
M 16	0.62	93.16 ±8.82	9.5 ±0.9	69 ±6	219.67 ±21.57	22.4 ±2.2	161.7 ±15.9	261.83 ±26.47	26.7 ±2.7	192.8 ±19.5
M 18	0.71	132.3 ±13.72	13.5 ±1.4	97 ±10	290.28 ±29.42	29.6 ±3.0	213.7 ±21.7	372.65 ±37.26	38.0 ±3.8	274.4 ±27.4
M 20	0.78	182.40 ±18.63	18.6 ±1.9	134 ±14	430.51 ±43.14	43.9 ±4.4	317.0 ±31.8	511.90 ±50.99	52.2 ±5.2	376.9 ±37.5
M 22	0.87	242.22 ±24.51	24.7 ±2.5	178 ±18	579.57 ±57.85	59.1 ±5.9	426.7 ±42.6	680.58 ±67.66	69.4 ±6.9	501.1 ±49.8
M 24	0.94	314.79 ±31.38	32.1 ±3.2	232 ±23	740.40 ±73.54	75.5 ±7.5	545.1 ±54.2	884.56 ±88.25	90.2 ±9.0	651.2 ±65
M 30	1.17	613.80 ±61.78	62.6 ±6.3	452 ±45	-	-	-	1726.95 ±172.59	176.1 ±17.6	1271.4 ±127.1
M 36	1.40	1061.08 ±105.91	108.2 ±10.8	781 ±78	-	-	-	2984.16 ±298.12	304.3 ±30.4	2197 ±219.5
M 42	1.65	1684.78 ±168.67	171.8 ±17.2	1240 ±124	-	-	-	4738.57 ±473.66	483.2 ±48.3	3488.7 ±348.7
M 45	1.77	2072.15 ±206.92	211.3 ±21.1	1525 ±152	-	-	-	5828.09 ±582.51	594.3 ±59.4	4290.9 ±428.9

Tightening torque (inch)

Classification		4.8T			8.8T			10.9T, 12.9T		
Screw size		Tightening torque			Tightening torque			Tightening torque		
mm	inch	N m	kgf m	lbf ft	N m	kgf m	lbf ft	N m	kgf m	lbf ft
1/4	6.35	9.80 ±0.98	0.6 ±0.06	4.3 ±0.4	23.53 ±2.35	1.0 ±0.1	7.2 ±0.7	16.67 ±1.96	1.7 ±0.2	12.2 ±1.2
5/16	7.94	11.76 ±1.17	1.2 ±0.12	8.7 ±0.8	19.61 ±1.96	2.0 ±0.2	14.4 ±1.4	29.42 ±2.94	3.0 ±0.3	21.7 ±2.2
3/8	9.53	19.61 ±1.96	2.0 ±0.20	14.4 ±1.4	40.20 ±3.92	4.1 ±0.4	29.6 ±2.9	54.91 ±4.90	5.6 ±0.5	40 ±4
7/16	11.11	31.38 ±3.13	3.2 ±0.32	23 ±2	59.82 ±5.88	6.1 ±0.6	44.0 ±4.3	87.27 ±8.82	8.9 ±0.9	64 ±6
1/2	12.70	46.09 ±4.60	4.7 ±0.47	34 ±3	100.02 ±9.80	10.2 ±1.0	73.6 ±7.2	131.40 ±12.74	13.4 ±1.3	97 ±10
9/16	14.29	66.68 ±6.66	6.8 ±0.68	50 ±5	140.23 ±13.72	14.3 ±1.4	103.2 ±10.1	186.32 ±18.63	19.0 ±1.9	137 ±14
5/8	15.88	91.20 ±9.12	9.3 ±0.93	67 ±7	200.05 ±19.61	20.4 ±2.0	147.3 ±14.4	255.95 ±25.49	26.1 ±2.6	190 ±19
3/4	19.05	156.90 ±15.69	16.0 ±1.60	115 ±15	-	-	-	442.28 ±44.12	45.1 ±4.5	325 ±33
7/8	22.22	250.07 ±25.00	25.5 ±2.55	185 ±19	-	-	-	702.15 ±70.60	71.6 ±7.2	520 ±52
1	25.40	372.65 ±37.26	38.0 ±3.80	275 ±27	-	-	-	1048.33 ±104.93	106.9 ±10.7	770 ±77
1 1/8	28.58	530.54 ±53.05	54.1 ±5.41	390 ±39	-	-	-	1492.57 ±149.06	152.2 ±15.2	1100 ±110
1 1/4	31.75	727.65 ±72.76	74.2 ±7.42	535 ±54	-	-	-	2048.61 ±204.95	208.9 ±20.9	1510 ±151
1 3/4	34.93	968.89 ±96.88	98.8 ±9.88	710 ±71	-	-	-	2724.29 ±272.62	277.8 ±27.8	2000 ±200
1 1/2	38.1	1257.21 ±125.72	128.2 ±12.82	925 ± 93	-	-	-	3537.26 ±354.02	360.7 ±36.1	2600 ±260

NOTE!

This torque table does not apply to screws with nylon packings or where nonferrous metal washers are to be used, or which require tightening to a different specified torque, or tightening procedure.

NOTE!

N m (Newton meter): 1 N m ≅ 0.1 kgf m

Tightening torque of split flange screws

Use these torques for split flange screws.

Tightening torque (split flange screws)

Thread diameter of screw (mm)	Width across flats (mm)	Tightening torque		
		N m	kgf m	lbf ft
10	14	65.7 ±6.8	6.7 ±0.7	48.4 ±5
12	17	112 ±9.8	11.5 ±1	83 ±8
16	22	279 ±29	28.5 ±3	206 ±20

Tightening torque for hydraulic plugs with O-ring

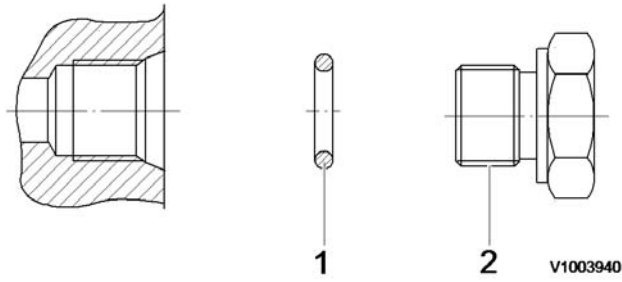


Figure 1
Hydraulic plugs with O-ring

1. O-ring
2. Plug

Pf thread

Tightening torque (hydraulic plugs)

Thread	Plug part No.	Tightening torque N m	Tightening torque kgf m	Tightening torque lbf ft
1/8	9415-11012	24.51 ±1.96	2.5 ±0.2	18 ±1.4
1/4	9415-11022	49.03 ±4.90	5.0 ±0.5	36 ±3.6
3/8	9415-11032	73.54 ±4.90	7.5 ±0.5	54 ±3.6
1/2	9415-11042	107.87 ±9.80	11.0 ±1.0	79 ±7
3/4	9415-11052	176.52 ±9.80	18.0 ±1.0	130 ±7
1	9415-11062	205.94 ±19.61	21.0 ±2.0	152 ±14

Tightening torque for swivel nut fitting with O-ring

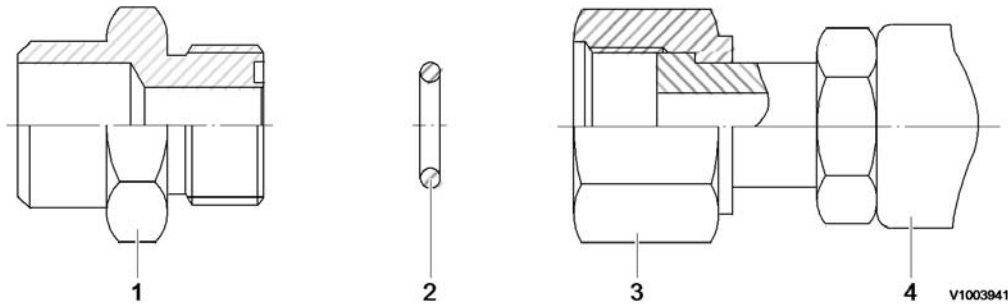


Figure 2
Swivel nut fitting with O-ring

1. Connector
2. O-ring
3. Swivel nut
4. Hose

Tightening torque for swivel nut fitting

Tube outer diameter (in)	Thread size (in)	Tightening torque, N m	Tightening torque, kgf m	Tightening torque, lbf ft
1/2	UN 13/16 – 16	93.16 ±9.31	9.5 ±0.95	69 ±7
3/4	UN 1 3/16 – 12	176.52 ±17.65	18 ±1.8	130 ±13
1	UN 1 7/16 – 12	205.94 ±20.59	21 ±2.1	152 ±15

Document Title: NET 8940-00170 Replace tool for the hydraulic tank and fuel tank	Function Group: 080	Information Type: Service Information	Date: 2015/5/29
Profile: EXC, EC460B LC [GB]			

NET 8940-00170 Replace tool for the hydraulic tank and fuel tank

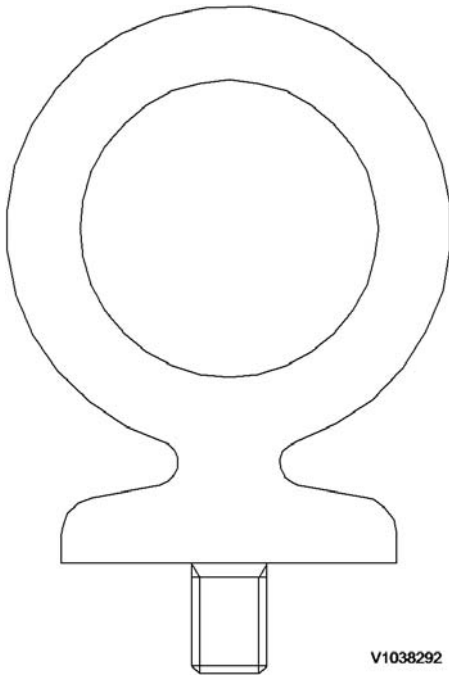


Figure 1
Replace tool for the hydraulic tank and fuel tank

Item	Quantity	Name	Remark
1	2	Lifting eye bolt	SAE 4120

Document Title: NET 8940-00020 Replace tool for the radiator assembly	Function Group: 080	Information Type: Service Information	Date: 2015/5/29
Profile: EXC, EC460B LC [GB]			

NET 8940-00020 Replace tool for the radiator assembly

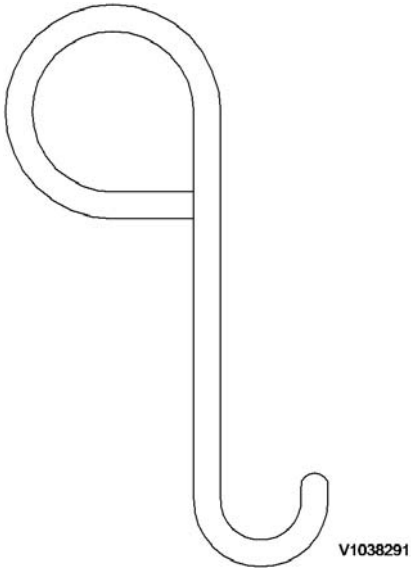


Figure 1
Replace tool for the radiator assembly

Item	Quantity	Name	Remark
1	2	Lifter	SAE 1040



Suggest:

For more complete manuals. Please go to the home page.

<https://www.ebooklibonline.com>

If the above button click is invalid. Please download this document first, and then click the above link to download the complete manual.

Thank you so much for reading

Document Title: NET 8940-00200 Replace tool for the remote control valve joint	Function Group: 080	Information Type: Service Information	Date: 2015/5/29
Profile: EXC, EC460B LC [GB]			

NET 8940-00200 Replace tool for the remote control valve joint

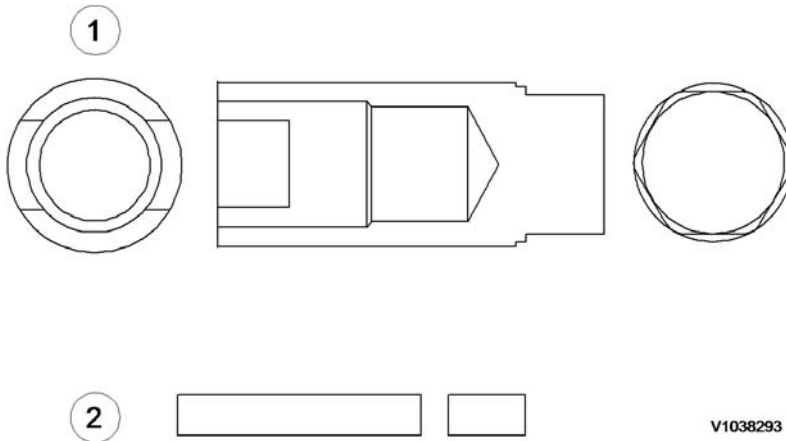


Figure 1
Replace tool for the remote control valve joint

Item	Quantity	Name	Remark
1	1	Socket	SAE 4130 (QT)
2	1	Stop plate	SAE 4130 (QT)

Document Title: NET 8940-00240 Replace tool for the hydraulic tee fitting	Function Group: 080	Information Type: Service Information	Date: 2015/5/29
Profile: EXC, EC460B LC [GB]			

NET 8940-00240 Replace tool for the hydraulic tee fitting

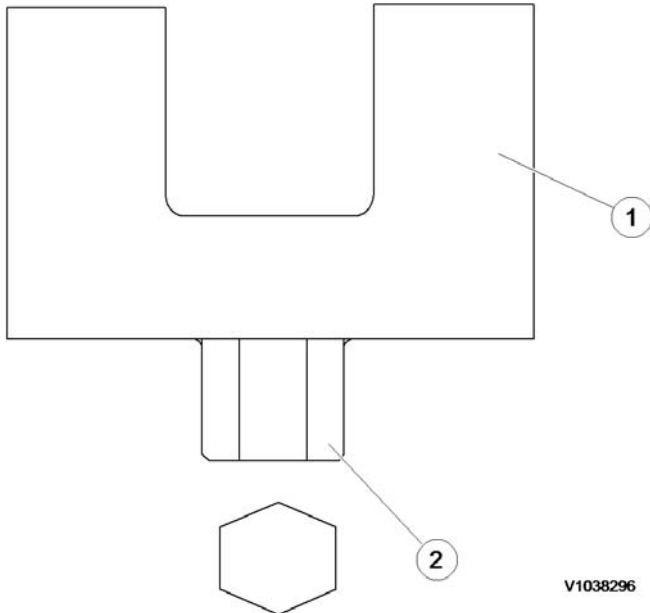


Figure 1
Replace tool for the hydraulic tee fitting

Item	Quantity	Name	Remark
1	1	Plate bar - 30 t	SAE 4145 (QT)
2	1	Hexagon bar	SAE 4145 (QT)

<https://www.ebooklibonline.com>

Hello dear friend!

Thank you very much for reading.

Enter the link into your browser.

The full manual is available for immediate download.

<https://www.ebooklibonline.com>