

Document Title: Product plates	Function Group: 000	Information Type: Service Information	Date: 2014/8/28
Profile: EXC, EC240C LD [GB]			

Product plates

When ordering spare parts, and in all telephone enquiries or correspondence the model designation and the Product Identification Number (PIN) must always be quoted.

Product plate

The product plate on the machine shows the manufacturer's name and address, model designation, PIN, machine weight, engine output, production year and year of delivery. There is also room for the CE mark. The plate is positioned under the boom on the superstructure frame.

Engine

The engine product plate contains type designation and part and serial numbers and is positioned on the engine inside the rear engine cover on the right side of the machine.

Attachment quick coupler

The attachment quick coupler nameplate is attached on the outside of the attachment quick coupler. (shows part number and weight)

Bucket

The bucket nameplate is attached on the top of the bucket. (shows the bucket model order No, Serial number, bucket part number, rated capacity, weight, cutting width, tooth part number and adapted part number)

Cab

The nameplate is attached on the inside of the cab and indicates the product number, serial number, model type, and weight.

Document Title: Demolition machine, description	Function Group: 000	Information Type: Service Information	Date: 2014/8/28
Profile: EXC, EC240C LD [GB]			

[Go back to Index Page](#)

Demolition machine, description

The demolition machine is based on a standard machine.

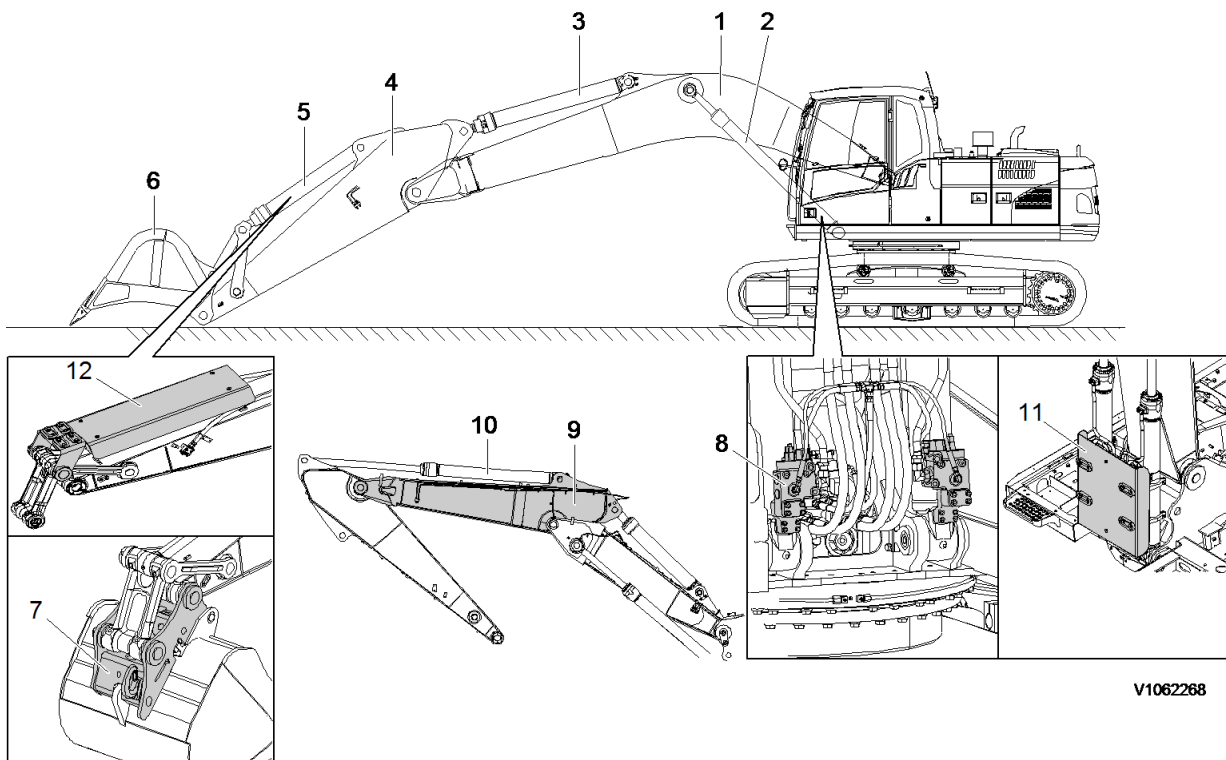
This demolition machine is composed of HD Side door reinforce, Slew ring gear protection cover, Upper frame side protection plate reinforce, Upper under cover reinforce, Boom cylinder protection plate and Bucket cylinder protection plate, Working and maintenance lamps, Top protection round pipe on rear and RH side.

Document Title: Demolition machine, description	Function Group: machine, 000	Information Type: Service Information	Date: 2014/8/28
Profile: EXC, EC240C LD [GB]			

[Go back to Index Page](#)

Demolition machine, description

Standard Demolition Attachments



V1062268

Figure 1
Digging equipment

NOTE!

The above illustration is a typical graphic of the EC210C.

Standard Demolition Attachments

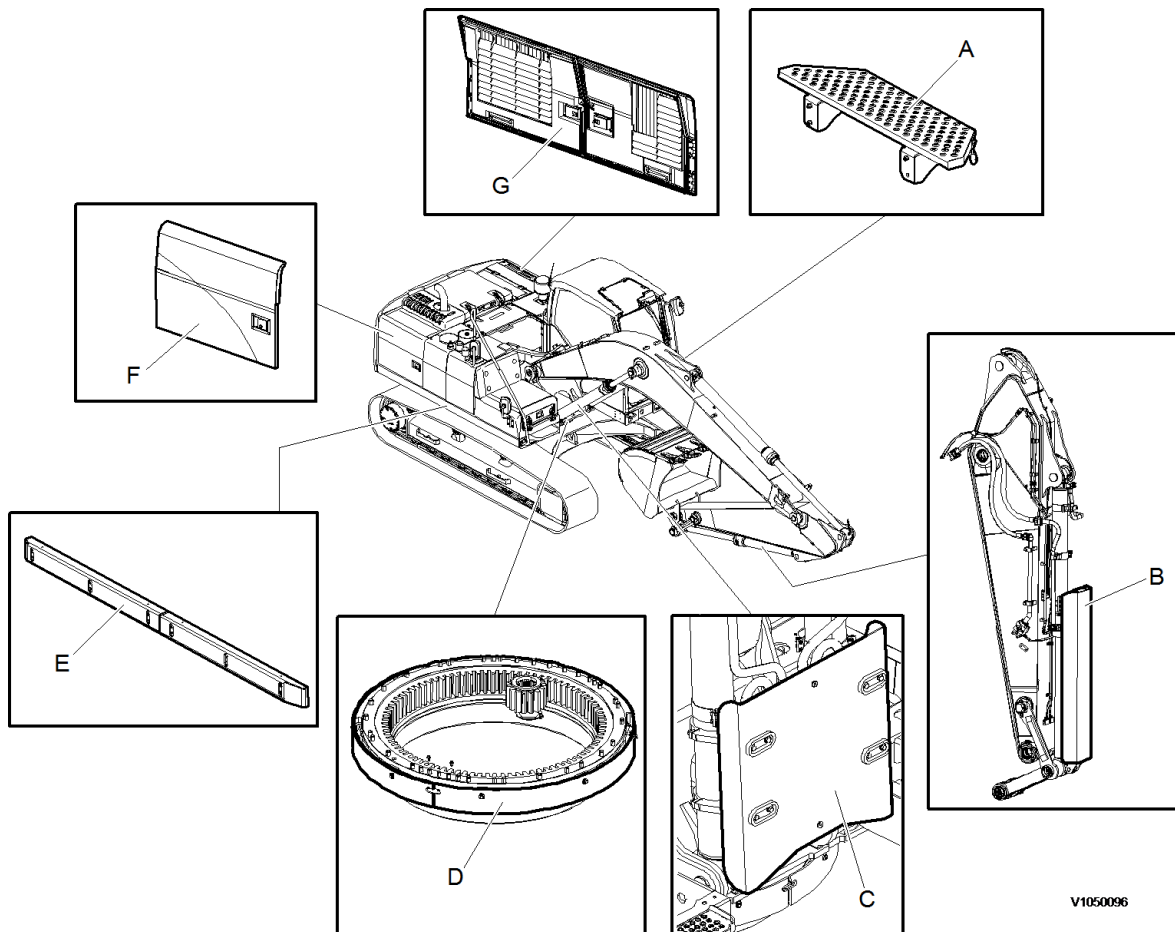
The demolition machine is based on a standard machine.

Digging unit in standard machine consists of Boom (1), Boom cylinder (2), Arm (4), Arm cylinder (3), Bucket (6) and Bucket cylinder (5) and options are Line Rupture Valve (8), Quickfit (7), Two-Piece Boom (9), and Two-Piece Boom cylinder (10).

Boom cylinder protection guard (11) and Bucket cylinder protection guard (12) are installed on demolition machine.

Document Title: Machine view, demolition	Function Group: 000	Information Type: Service Information	Date: 2014/8/28
Profile: EXC, EC240C LD [GB]			

Machine view, demolition



V1050096

Figure 1
Machine view, demolition

- A. Step, Cabin
- B. Bucket cylinder protecting guard
- C. Boom cylinder protecting guard
- D. Swing ring gear cover
- E. Side impact protection (bolt tightening torque: 262 ± 27 Nm, 193 ± 27 lbf ft)
- F. Auxiliary hood, right side door
- G. Auxiliary hood, left side door

<https://www.ebooklibonline.com>

Hello dear friend!

Thank you very much for reading.

Enter the link into your browser.

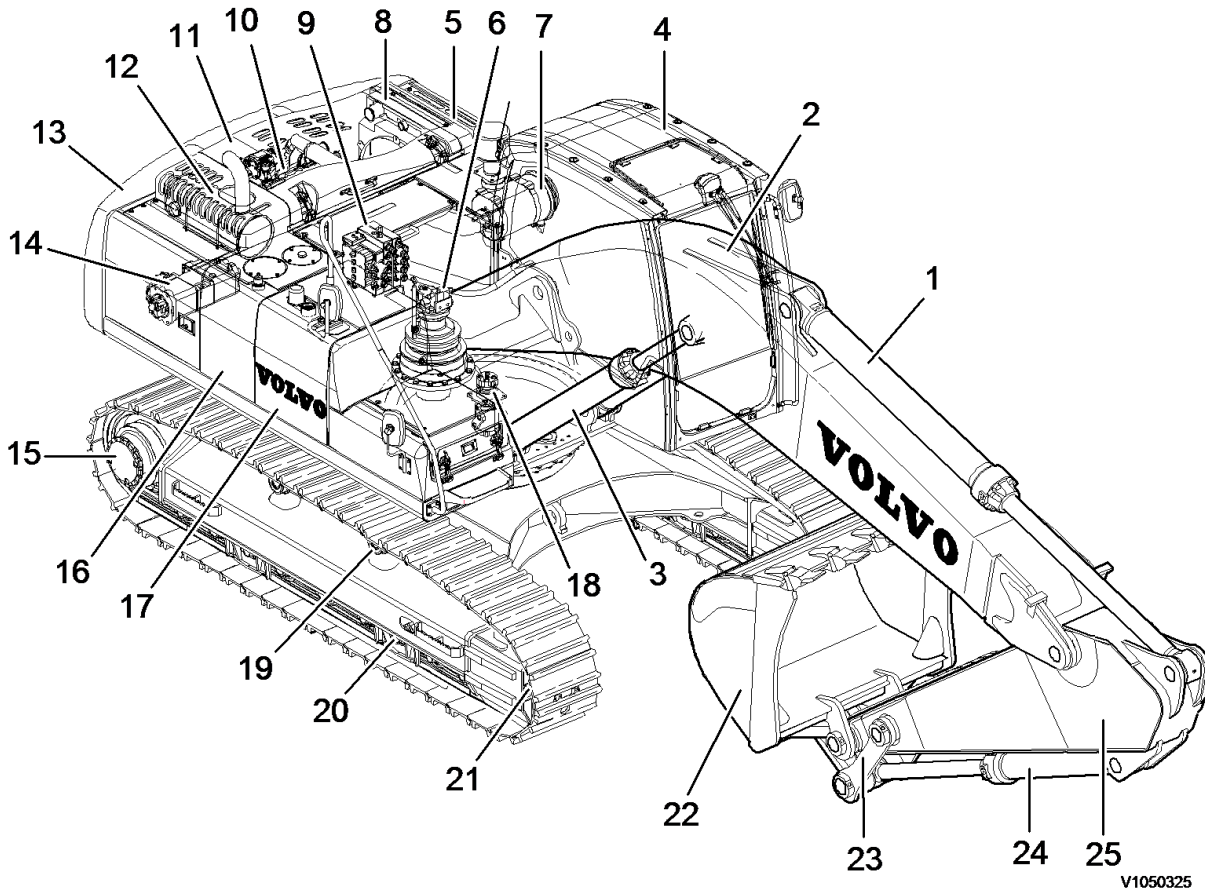
The full manual is available for immediate download.

<https://www.ebooklibonline.com>

Document Title: Component locations	Function Group: 000	Information Type: Service Information	Date: 2014/8/28
Profile: EXC, EC240C LD [GB]			

[Go back to Index Page](#)

Component locations



V1050325

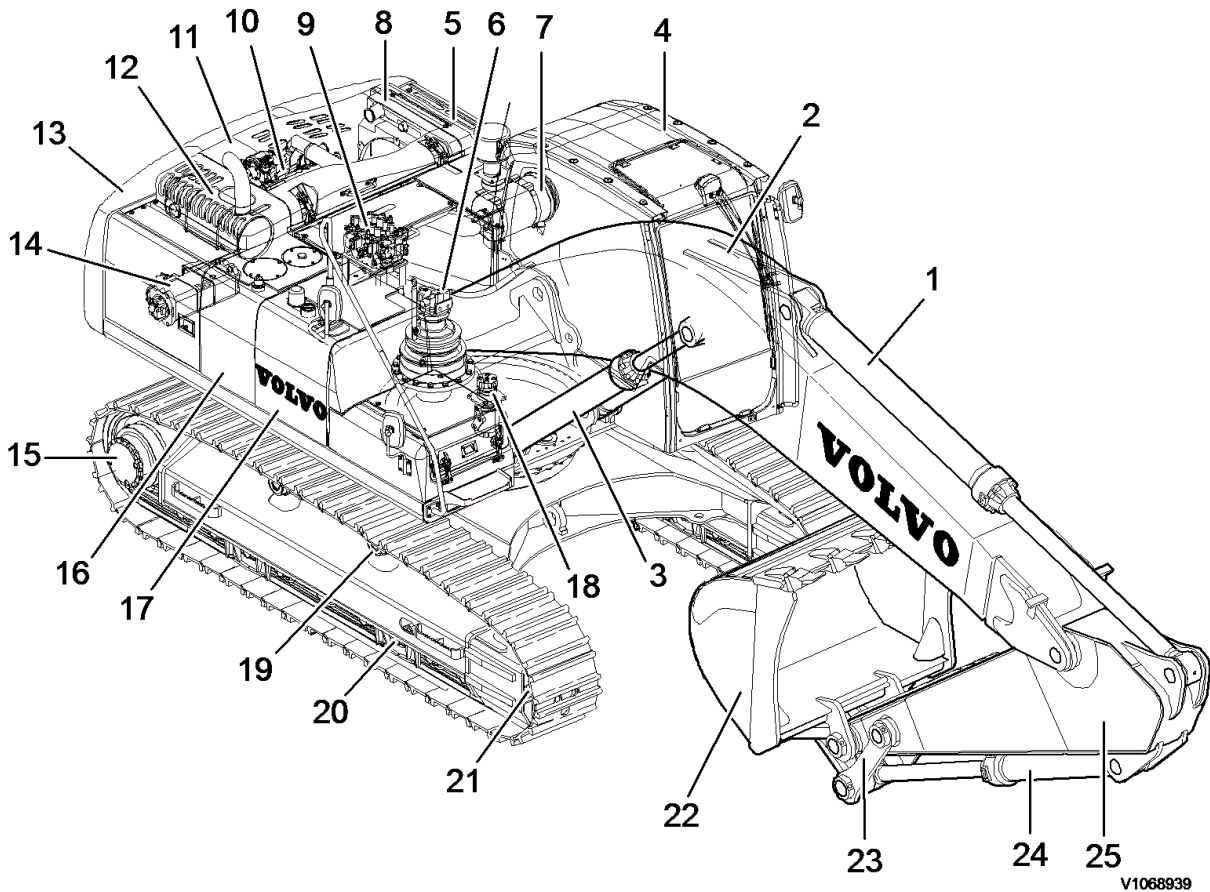
Figure 1
Component position

1 Dipper arm cylinder	14 Main pump
2 Boom	15 Track motor and gearbox
3 Boom cylinder	16 Hydraulic tank
4 Operator cab	17 Fuel tank
5 Oil cooler	18 Center passage
6 Slew motor and gearbox	19 Top roller
7 Air cleaner	20 Bottom roller
8 Radiator and charge air cooler	21 Idler
9 Main control valve	22 Bucket
10 Engine	23 Link
11 Rear hood	24 Bucket cylinder
12 Muffler	25 Dipper arm

Document Title: Component locations	Function Group: 000	Information Type: Service Information	Date: 2014/8/28
Profile: EXC, EC240C LD [GB]			

[Go back to Index Page](#)

Component locations



V1068939

Figure 1
Component position

1 Dipper arm cylinder	14 Main pump
2 Boom	15 Track motor and gearbox
3 Boom cylinder	16 Hydraulic tank
4 Operator cab	17 Fuel tank
5 Oil cooler	18 Center passage
6 Slew motor and gearbox	19 Top roller
7 Air cleaner	20 Bottom roller
8 Radiator and charge air cooler	21 Idler
9 Main control valve	22 Bucket
10 Engine	23 Link
11 Rear hood	24 Bucket cylinder
12 Muffler	25 Dipper arm

Document Title: Measurement conversion tables	Function Group: 030	Information Type: Service Information	Date: 2014/8/28
Profile: EXC, EC240C LD [GB]			

Measurement conversion tables

Length

Unit	cm	m	km	in	ft	yd	mile
cm	1	0.01	0.00001	0.3937	0.03281	0.01094	0.000006
m	100	1	0.001	39.37	3.2808	1.0936	0.00062
km	100000	1000	1	39370.7	3280.8	1093.6	0.62137
in	2.54	0.0254	0.000025	1	0.08333	0.02777	0.000015
ft	30.48	0.3048	0.000304	12	1	0.3333	0.000189
yd	91.44	0.9144	0.000914	36	3	1	0.000568
mile	160930	1609.3	1.6093	63360	5280	1760	1

1 mm = 0.1 cm, 1 mm = 0.001 m

Area

Unit	cm2	m2	km2	a	ft2	yd2	in2
cm2	1	0.0001	-	0.000001	0.001076	0.000012	0.155000
m2	10000	1	0.000001	0.01	10.764	1.1958	1550.000
km2	-	1000000	1	10000	1076400	1195800	-
a	0.01	100	0.0001	1	1076.4	119.58	-
ft2	-	0.092903	-	0.000929	1	0.1111	144.000
yd2	-	0.83613	-	0.008361	9	1	1296.00
in2	6.4516	0.000645	-	-	0.006943	0.000771	1

1 ha = 100 a, 1 mile² = 259 ha = 2.59 km²

Volume

Unit	cm3 = cc	m3	Liter	in3	ft3	yd3
cm3 = m liter	1	0.000001	0.001	0.061024	0.000035	0.000001
m3	1000000	1	1000	61024	35.315	1.30796
Liter	1000	0.001	1	61.024	0.035315	0.001308
in3	16.387	0.000016	0.01638	1	0.000578	0.000021
ft3	28316.8	0.028317	28.317	1728	1	0.03704
yd3	764529.8	0.76453	764.53	46656	27	1

1 gal(US) = 3785.41 cm³ = 231 in³ = 0.83267 gal(US)

Weight

Unit	g	kg	t	oz	lb
g	1	0.001	0.000001	0.03527	0.0022
kg	1000	1	0.001	35.273	2.20459

t	1000000	1000	1	35273	2204.59
oz	28.3495	0.02835	0.000028	1	0.0625
lb	453.592	0.45359	0.000454	16	1
1 tonne(metric) = 1.1023 ton(US) = 0.9842 ton(UK)					

Pressure

Unit	kgf/cm ²	bar	Pa=N/m ²	kPa	lbf/in ²	lbf/ft ²
kgf/cm ²	1	0.98067	98066.5	98.0665	14.2233	2048.16
bar	1.01972	1	100000	100	14.5037	2088.6
Pa=N/m ²	0.00001	0.001	1	0.001	0.00015	0.02086
kPa	0.01020	0.01	1000	1	0.14504	20.886
lbf/in ²	0.07032	0.0689	6894.76	6.89476	1	144
lbf/ft ²	0.00047	0.00047	47.88028	0.04788	0.00694	1
1 kgf/cm ² = 735.56 Torr(mmHg) = 0.96784 atm						

Approximate conversions

SI	Conversion	Non-SI	Conversion	SI
Unit	Factor	Unit	Factor	Unit
Torque				
newton meter (N·m)	x 10.2	= kgf·cm	x 0.8664	= (lbf·in)
newton meter (N·m)	x 0.74	= lb·ft	x 1.36	= N·m
newton meter (N·m)	x 0.102	= kgf·m	x 7.22	= (lbf·ft)
Pressure (Pa = N/m²)				
kilopascal (kPa)	x 4.0	= in. H ₂ O	x 0.249	= kPa
kilopascal (kPa)	x 0.30	= in. Hg	x 3.38	= kPa
kilopascal (kPa)	x 0.145	= psi	x 6.89	= kPa
(bar)	x 14.5	= psi	x 0.069	= (bar)
(kgf/cm ²)	x 14.22	= psi	x 0.070	= (kgf/cm ²)
(newton/mm ²)	x 145.04	= psi	x 0.069	= (bar)
megapascal (MPa)	x 145	= psi	x 0.00689	= MPa
Power (W = J/s)				
kilowatt (kW)	x 1.36	= PS (cv)	x 0.736	= kW
kilowatt (kW)	x 1.34	= HP	x 0.746	= kW
kilowatt (kW)	x 0.948	= Btu/s	x 1.055	= kW
watt (W)	x 0.74	= ft·lb/s	x 1.36	= W
Energy (J = N·m)				
kilojoule (kJ)	x 0.948	= Btu	x 1.055	= kJ
joule (J)	x 0.239	= calorie	x 4.19	= J
Velocity and Acceleration				
meter per sec ² (m/s ²)	x 3.28	= ft/s ²	x 0.305	= m/s ²
meter per sec (m/s)	x 3.28	= ft/s	x 0.305	= m/s
kilometer per hour (km/h)	x 0.62	= mph	x 1.61	= km/h
Horse power/torque				
BHP x 5252 rpm = TQ (lb·ft)			TQ x rpm 5252 = B.H.P.	
Temperature				
°C = (°F - 32) / 1.8		°F = (°C x 1.8) + 32		
Flow Rate				

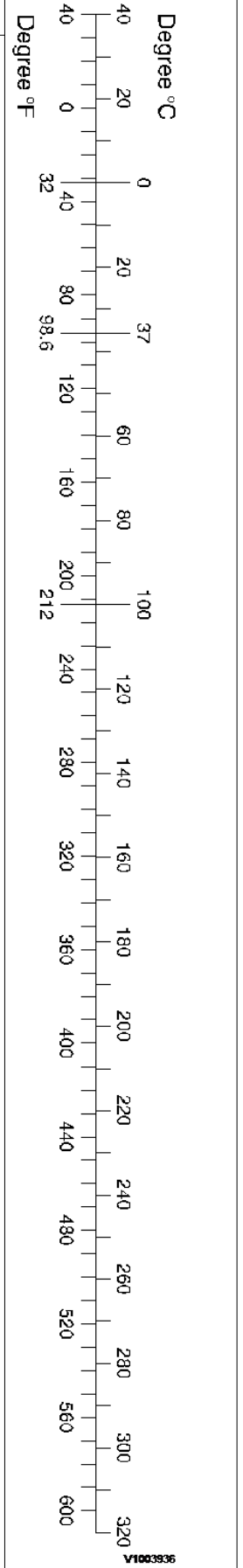
liter/min (dm³/min)

x 0.264

= US gal/min x 3.785

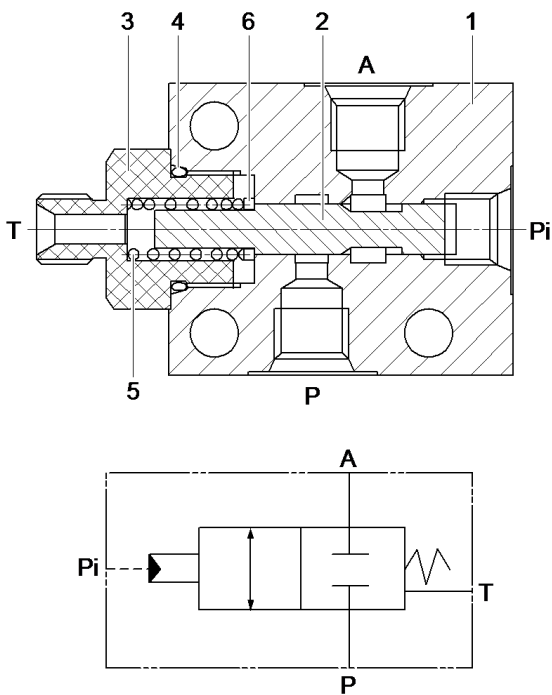
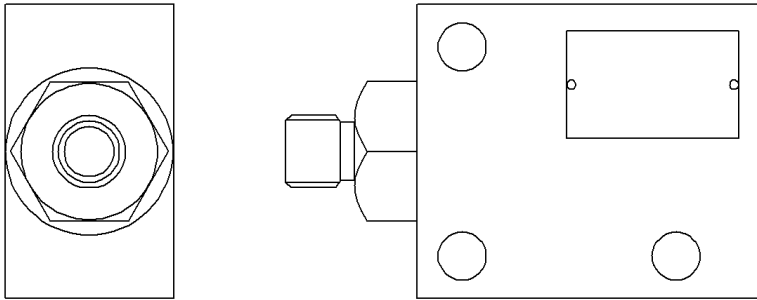
= liter/min

Note: () non-si unit



Document Title: Adjustable boom selector valve	Function Group: 030	Information Type: Service Information	Date: 2014/8/28
Profile: EXC, EC240C LD [GB]			

Adjustable boom selector valve



V1005050

Figure 1
Adjustable boom selector valve

Specifications, adjustable boom selector valve



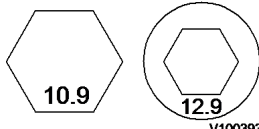
Description	Unit	Specifications
Maximum operating pressure	MPa (kgf/cm ²) (psi) (bar)	3.92 (40) (569) (39.2)
Operating flow rate	Litre/min (gal/min)	20 (5.3)
Cracking pressure	MPa (kgf/cm ²) (psi) (bar)	0.49 (5) (71.1) (4.9)
Internal leakage, at 70 kgf/cm ² and 20 cSt	cc/min (cu-in/min)	30 (1.8)

Document Title: Standard tightening torques	Function Group: 030	Information Type: Service Information	Date: 2014/8/28
Profile: EXC, EC240C LD [GB]			

Standard tightening torques

The following charts give the standard tightening torques of screws and nuts. Exceptions are given in each sections of "disassembly and assembly".

Tightening torque (meter)

Classification		4.8T			8.8T			10.9T, 12.9T		
Screw type										
Screw size		Tightening torque			Tightening torque			Tightening torque		
mm	inch	N m	kgf m	lbf ft	N m	kgf m	lbf ft	N m	kgf m	lbf ft
M 4	0.15	1.96 ±0.19	0.2 ±0.02	1.4 ±0.1	-	-	-	3.92 ±0.39	0.4 ±0.04	2.9 ±0.3
M 5	0.19	2.94 ±0.29	0.3 ±0.03	2.2 ±0.2	5.88 ±0.59	0.6 ±0.06	4.3 ±0.4	7.84 ±0.78	0.8 ±0.08	5.8 ±0.6
M 6	0.23	4.90 ±0.49	0.5 ±0.05	3.6 ±0.4	9.8 ±0.98	1.0 ±0.10	7.2 ±0.7	13.72 ±1.37	1.4 ±0.14	10.1 ±1
M 8	0.31	11.76 ±1.17	1.2 ±0.12	8.7 ±0.9	23.541 ±2.35	2.4 ±0.24	17.3 ±1.7	32.36 ±2.94	3.3 ±0.3	23.8 ±2.2
M 10	0.39	22.55 ±2.25	2.3 ±0.23	16.6 ±1.7	48.05 ±4.9	4.9 ±0.5	35.4 ±3.6	63.74 ±6.86	6.5 ±0.7	46.9 ±5.1
M 12	0.46	39.22 ±3.92	4.0 ±0.4	29 ±3	85.32 ±8.83	8.7 ±0.9	62.8 ±6.5	110.81 ±10.78	11.3 ±1.1	81.6 ±7.9
M 14	0.55	62.7 ±5.88	6.4 ±0.6	46 ±4	140.24 ±13.73	14.3 ±1.4	103.2 ±10.1	175.53 ±17.65	17.9 ±1.8	129.2 ±13
M 16	0.62	93.16 ±8.82	9.5 ±0.9	69 ±6	219.67 ±21.57	22.4 ±2.2	161.7 ±15.9	261.83 ±26.47	26.7 ±2.7	192.8 ±19.5
M 18	0.71	132.3 ±13.72	13.5 ±1.4	97 ±10	290.28 ±29.42	29.6 ±3.0	213.7 ±21.7	372.65 ±37.26	38.0 ±3.8	274.4 ±27.4
M 20	0.78	182.40 ±18.63	18.6 ±1.9	134 ±14	430.51 ±43.14	43.9 ±4.4	317.0 ±31.8	511.90 ±50.99	52.2 ±5.2	376.9 ±37.5
M 22	0.87	242.22 ±24.51	24.7 ±2.5	178 ±18	579.57 ±57.85	59.1 ±5.9	426.7 ±42.6	680.58 ±67.66	69.4 ±6.9	501.1 ±49.8
M 24	0.94	314.79 ±31.38	32.1 ±3.2	232 ±23	740.40 ±73.54	75.5 ±7.5	545.1 ±54.2	884.56 ±88.25	90.2 ±9.0	651.2 ±65
M 30	1.17	613.80 ±61.78	62.6 ±6.3	452 ±45	-	-	-	1726.95 ±172.59	176.1 ±17.6	1271.4 ±127.1
M 36	1.40	1061.08 ±105.91	108.2 ±10.8	781 ±78	-	-	-	2984.16 ±298.12	304.3 ±30.4	2197 ±219.5
M 42	1.65	1684.78 ±168.67	171.8 ±17.2	1240 ±124	-	-	-	4738.57 ±473.66	483.2 ±48.3	3488.7 ±348.7
M 45	1.77	2072.15 ±206.92	211.3 ±21.1	1525 ±152	-	-	-	5828.09 ±582.51	594.3 ±59.4	4290.9 ±428.9

Tightening torque (inch)

Classification		4.8T			8.8T			10.9T, 12.9T		
Screw size		Tightening torque			Tightening torque			Tightening torque		
mm	inch	N m	kgf m	lbf ft	N m	kgf m	lbf ft	N m	kgf m	lbf ft
1/4	6.35	9.80 ±0.98	0.6 ±0.06	4.3 ±0.4	23.53 ±2.35	1.0 ±0.1	7.2 ±0.7	16.67 ±1.96	1.7 ±0.2	12.2 ±1.2
5/16	7.94	11.76 ±1.17	1.2 ±0.12	8.7 ±0.8	19.61 ±1.96	2.0 ±0.2	14.4 ±1.4	29.42 ±2.94	3.0 ±0.3	21.7 ±2.2
3/8	9.53	19.61 ±1.96	2.0 ±0.20	14.4 ±1.4	40.20 ±3.92	4.1 ±0.4	29.6 ±2.9	54.91 ±4.90	5.6 ±0.5	40 ±4
7/16	11.11	31.38 ±3.13	3.2 ±0.32	23 ±2	59.82 ±5.88	6.1 ±0.6	44.0 ±4.3	87.27 ±8.82	8.9 ±0.9	64 ±6
1/2	12.70	46.09 ±4.60	4.7 ±0.47	34 ±3	100.02 ±9.80	10.2 ±1.0	73.6 ±7.2	131.40 ±12.74	13.4 ±1.3	97 ±10
9/16	14.29	66.68 ±6.66	6.8 ±0.68	50 ±5	140.23 ±13.72	14.3 ±1.4	103.2 ±10.1	186.32 ±18.63	19.0 ±1.9	137 ±14
5/8	15.88	91.20 ±9.12	9.3 ±0.93	67 ±7	200.05 ±19.61	20.4 ±2.0	147.3 ±14.4	255.95 ±25.49	26.1 ±2.6	190 ±19
3/4	19.05	156.90 ±15.69	16.0 ±1.60	115 ±15	-	-	-	442.28 ±44.12	45.1 ±4.5	325 ±33
7/8	22.22	250.07 ±25.00	25.5 ±2.55	185 ±19	-	-	-	702.15 ±70.60	71.6 ±7.2	520 ±52
1	25.40	372.65 ±37.26	38.0 ±3.80	275 ±27	-	-	-	1048.33 ±104.93	106.9 ±10.7	770 ±77
1 1/8	28.58	530.54 ±53.05	54.1 ±5.41	390 ±39	-	-	-	1492.57 ±149.06	152.2 ±15.2	1100 ±110
1 1/4	31.75	727.65 ±72.76	74.2 ±7.42	535 ±54	-	-	-	2048.61 ±204.95	208.9 ±20.9	1510 ±151
1 3/4	34.93	968.89 ±96.88	98.8 ±9.88	710 ±71	-	-	-	2724.29 ±272.62	277.8 ±27.8	2000 ±200
1 1/2	38.1	1257.21 ±125.72	128.2 ±12.82	925 ± 93	-	-	-	3537.26 ±354.02	360.7 ±36.1	2600 ±260

NOTE!

This torque table does not apply to screws with nylon packings or where nonferrous metal washers are to be used, or which require tightening to a different specified torque, or tightening procedure.

NOTE!

N m (Newton meter): 1 N m \approx 0.1 kgf m

Tightening torque of split flange screws

Use these torques for split flange screws.

Tightening torque (split flange screws)

Thread diameter of screw (mm)	Width across flats (mm)	Tightening torque		
		N m	kgf m	lbf ft
10	14	65.7 ±6.8	6.7 ±0.7	48.4 ±5
12	17	112 ±9.8	11.5 ±1	83 ±8
16	22	279 ±29	28.5 ±3	206 ±20

Tightening torque for hydraulic plugs with O-ring

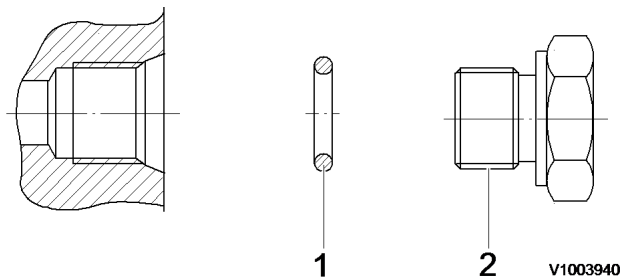


Figure 1
Hydraulic plugs with O-ring

1. O-ring
2. Plug

Pf thread

Tightening torque (hydraulic plugs)

Thread	Plug part No.	Tightening torque N m	Tightening torque kgf m	Tightening torque lbf ft
1/8	9415-11012	24.51 ±1.96	2.5 ±0.2	18 ±1.4
1/4	9415-11022	49.03 ±4.90	5.0 ±0.5	36 ±3.6
3/8	9415-11032	73.54 ±4.90	7.5 ±0.5	54 ±3.6
1/2	9415-11042	107.87 ±9.80	11.0 ±1.0	79 ±7
3/4	9415-11052	176.52 ±9.80	18.0 ±1.0	130 ±7
1	9415-11062	205.94 ±19.61	21.0 ±2.0	152 ±14

Tightening torque for swivel nut fitting with O-ring

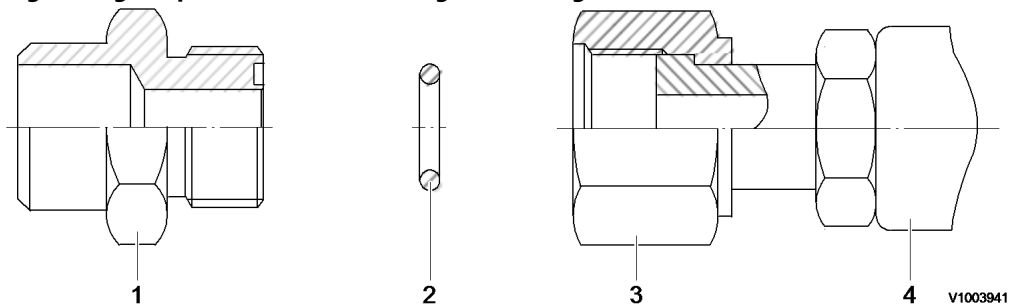


Figure 2
Swivel nut fitting with O-ring

1. Connector
2. O-ring
3. Swivel nut
4. Hose

Tightening torque for swivel nut fitting

Tube outer diameter (in)	Thread size (in)	Tightening torque, N m	Tightening torque, kgf m	Tightening torque, lbf ft
1/2	UN 13/16 – 16	93.16 ±9.31	9.5 ±0.95	69 ±7
3/4	UN 1 3/16 – 12	176.52 ±17.65	18 ±1.8	130 ±13
1	UN 1 7/16 – 12	205.94 ±20.59	21 ±2.1	152 ±15

Document Title: NET 8940-00200 Replace tool for the remote control valve joint	Function Group: 080	Information Type: Service Information	Date: 2014/8/28
Profile: EXC, EC240C LD [GB]			

NET 8940-00200 Replace tool for the remote control valve joint

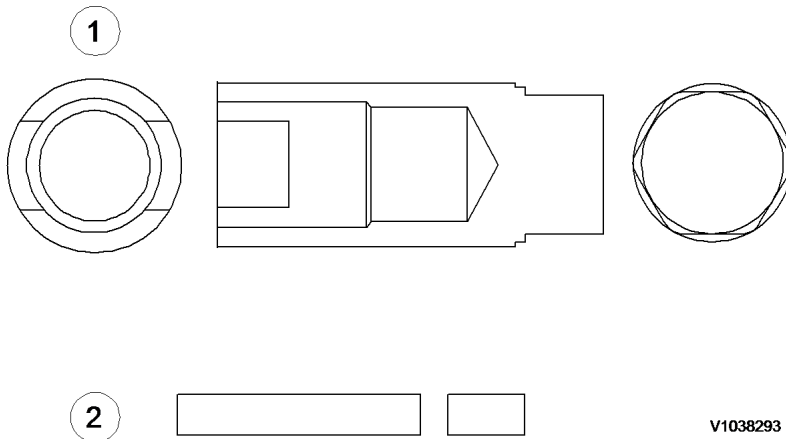
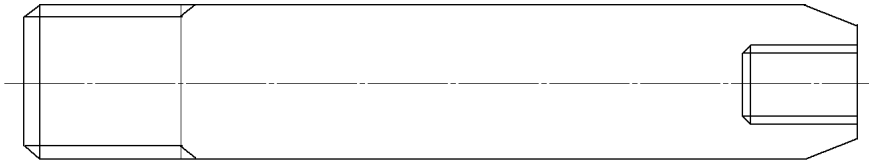


Figure 1
Replace tool for the remote control valve joint

Item	Quantity	Name	Remark
1	1	Socket	SAE 4130 (QT)
2	1	Stop plate	SAE 4130 (QT)

Document Title: E-tools, NET 8940-00300 Swing ring gear guide pin	Function Group: 080	Information Type: Service Information	Date: 2014/8/28
Profile: EXC, EC240C LD [GB]			

E-tools, NET 8940-00300 Swing ring gear guide pin



V1003955

Figure 1
Slew ring gear guide pin

Item	Quantity	Name	Remark
1	2	Guide bar	SAE 4130 (25 ~ 35 HRC)
2	2	Screw	M8 × 16

Document Title: NET 8940-00290 Track motor guide pin	Function Group: 080	Information Type: Service Information	Date: 2014/8/28
Profile: EXC, EC240C LD [GB]			

NET 8940-00290 Track motor guide pin

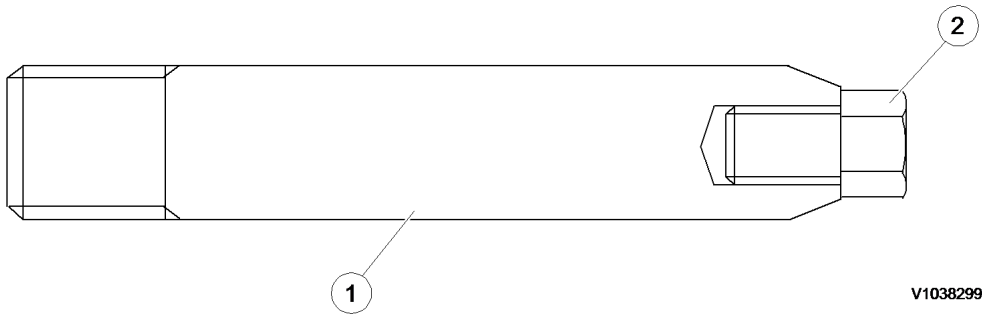


Figure 1
Track motor guide pin

Item	Quantity	Name	Remark
1	2	Guide bar	SAE 4130 (25 ~ 35 HRC)
2	2	Screw	M8 × 16

Document Title: E-tools, NET 8940-00330 Swing motor guide pin	Function Group: 080	Information Type: Service Information	Date: 2014/8/28
Profile: EXC, EC240C LD [GB]			

E-tools, NET 8940-00330 Swing motor guide pin

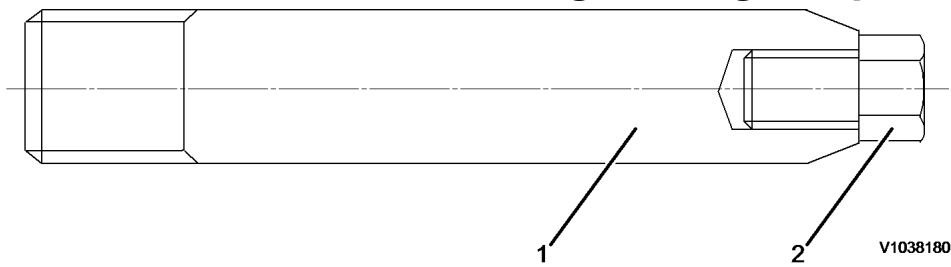


Figure 1
Swing motor guide pin

Item	Quantity	Name	Remark
1	2	Guide bar	SAE 4130 (25 ~ 35 HRC)
2	2	Screw	M8 × 16



Suggest:

For more complete manuals. Please go to the home page.

<https://www.ebooklibonline.com>

If the above button click is invalid. Please download this document first, and then click the above link to download the complete manual.

Thank you so much for reading

Document Title: Service positions	Function Group: 091	Information Type: Service Information	Date: 2014/8/28
Profile: EXC, EC240C LD [GB]			

Service positions

Park the machine on a horizontal and firm surface.

The suitable position is indicated in the description for the various service jobs.

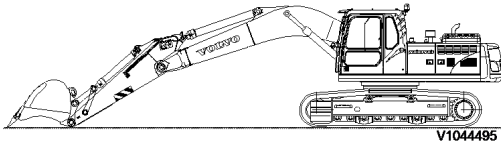


Figure 1
Service position A

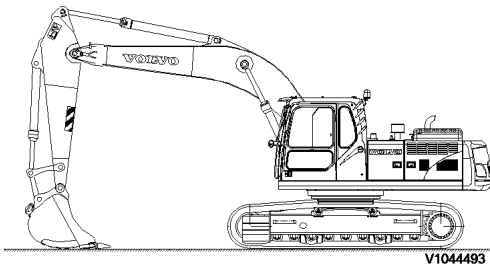


Figure 2
Service position B

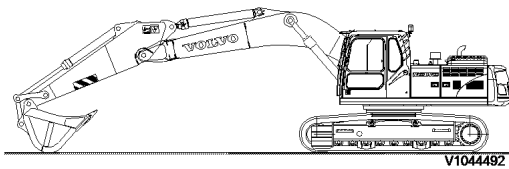


Figure 3
Service position C

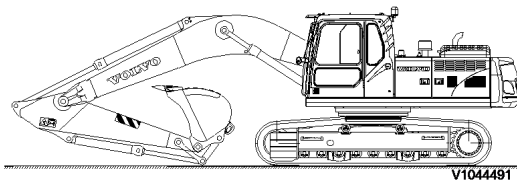


Figure 4
Service position D

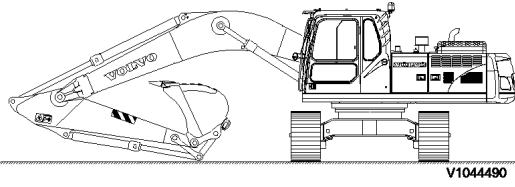


Figure 5
Service position E

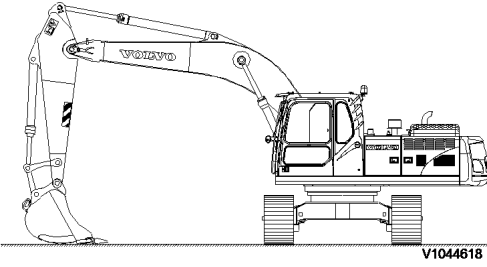


Figure 6
Service position F

Document Title: Welding on the machine	Function Group: 091	Information Type: Service Information	Date: 2014/8/28
Profile: EXC, EC240C LD [GB]			

Welding on the machine

NOTICE

During electric welding on the machine or attachments connected to the machine, components such as bearings and electric units may be damaged if the ground cable is connected incorrectly.

The following actions should be taken before starting electric welding to eliminate these risks:

1. Turn off the electric power using the battery disconnecter.
2. Disconnect the batteries.
NOTE!
Both the plus and minus terminal.
3. Disconnect the following electronic units:
 - Vehicle electronic control unit (V-ECU)
 - Engine electronic control unit (E-ECU)
 - Instrument electronic control unit (I-ECU)
 - Electronic climate control unit (ECC)
 - Wiper control unit (CU3601)
4. Connect the welding unit's ground connection as close as possible to the welding point, and make sure that the current does not pass across a bearing.

If welding is necessary on the boom or dipper arm, the following basic rules should be followed:

1. Welding beads should be laid down in the longitudinal direction.
2. If possible, weld in the middle of the metal section and never closer than **80 mm** to an edge.
3. Do not weld near the welded connections of the cylinder mounting eyes. Minimum distance from eye's weld to weld for weld lug = **100 mm**.
4. Do not weld close to where a metal plate has been bent.

<https://www.ebooklibonline.com>

Hello dear friend!

Thank you very much for reading.

Enter the link into your browser.

The full manual is available for immediate download.

<https://www.ebooklibonline.com>