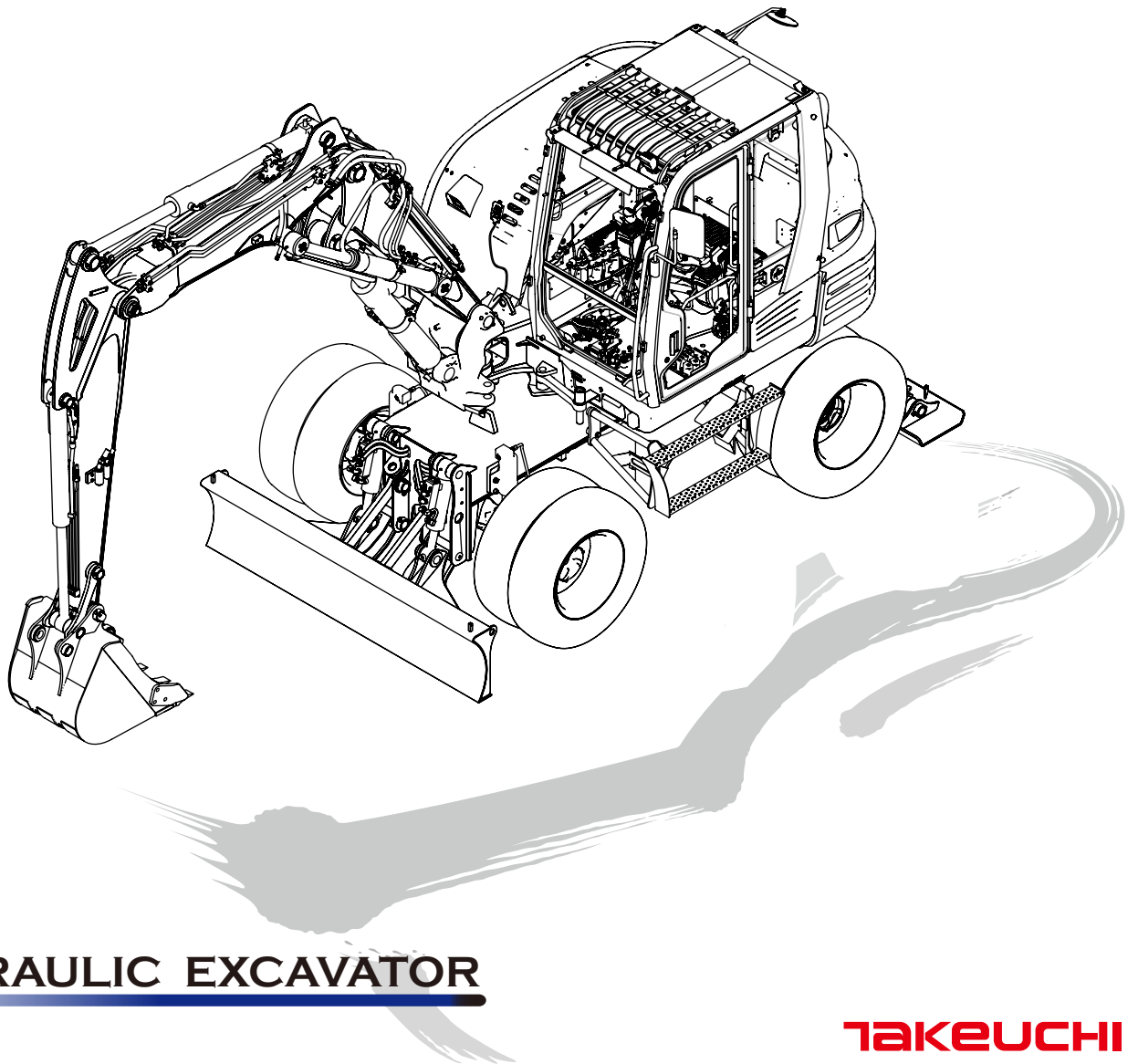


PARTS MANUAL

TB295W

TB295W [P-TB295W_G-XA] Book No. BW7Z000-0-0 S/N 190300003-



HYDRAULIC EXCAVATOR

TAKEUCHI

LOWER FRAME

Item	Part Number	Lev.	Description	Q'ty	Chan.	Serial No.	Mod.	Remarks
			FRAME ASSY, lower					
1	*****-*****		FRAME	1				
2	*****-*****		BOX, tool	1				
2-1	05610-00168	.	BOX	1				
2-2	05610-00182	.	COVER	1				
2-3	11000-40616	.	BOLT	4				
2-4	11400-20006	.	WASHER, spring	4				
2-5	16525-33015	.	CAP	4				
2-6	16545-20182	.	RUBBER	1				sold by the meter
2-7	16531-17922	.	GRIP	1				
2-8	16536-11837	.	LOCK	1				
3	05610-00184		STEP	1				
4	05610-38030		STOPPER, tire	2				
5	11010-41645		BOLT	16				
6	11415-50016		WASHER	16				
7	11000-40612		BOLT	8				
8	11400-20006		WASHER, spring	8				
9	11411-10006		WASHER	8				
10	15087-10010		PLUG	1				
11	05610-00288		GUARD	1				
13	11400-20016		WASHER, spring	8				

<https://www.ebooklibonline.com>

Hello dear friend!

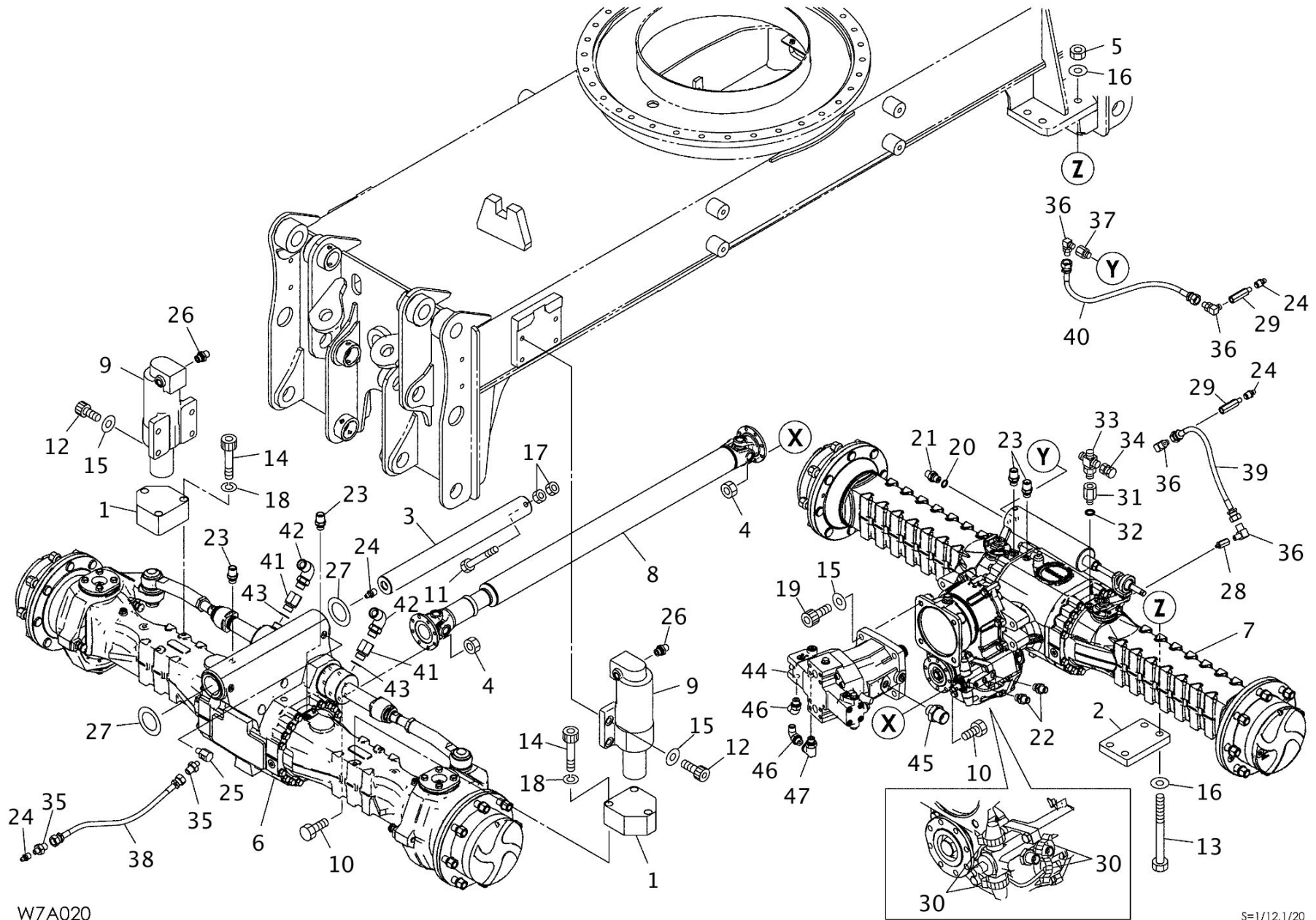
Thank you very much for reading.

Enter the link into your browser.

The full manual is available for immediate download.

<https://www.ebooklibonline.com>

TRAVEL DRIVE



W7A020

S=1/12.1/20

TRAVEL DRIVE

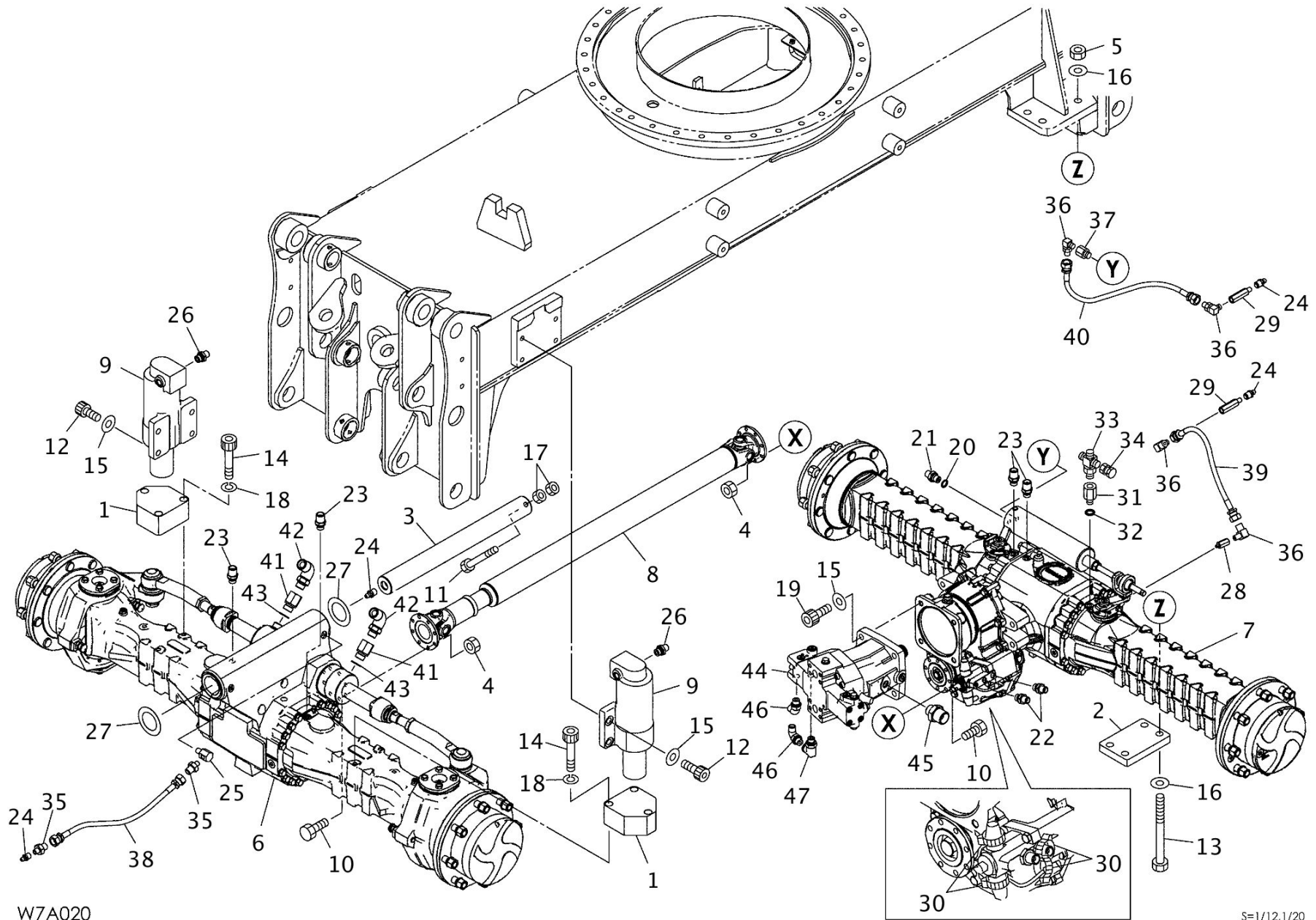
Item	Part Number	Lev.	Description	Q'ty	Chan.	Serial No.	Mod.	Remarks
			DRIVE ASSY, travel					
1	05616-17310		PLATE	2				
2	05616-17320		PLATE	2				
3	05616-00004		PIN	1				
4	11310-40010		NUT	16				
5	11327-51020		NUT	8				
6	19160-40900		AXLE, front	1				see Axle, front(1/6)
7	19160-41000		AXLE, rear	1				see Axle, rear(1/7)
8	19160-40700		SHAFT, drive	1				
9	19001-12400		CYLINDER, ram lock	2				
10	11064-41025		BOLT	16				
11	11001-41220		BOLT	1				
12	11110-41645		SCREW, cap	8				
13	11003-42040		BOLT	8				
14	11100-41470		SCREW, cap	6				
15	00039-00091		WASHER	12				
16	11415-50020		WASHER	16				
17	11300-40012		NUT	2				
18	11404-20014		WASHER, spring	6				
19	11100-41645		SCREW, cap	4				
20	14216-00014		WASHER, seal	1				
21	00072-00236		ADAPTOR	1				
22	15156-51402		ADAPTOR	2				
	14216-01014		O-RING	1				
23	15156-51403		ADAPTOR	4				
	14216-01014		O-RING	1				
24	15600-01000		FITTING, grease	4				
25	00072-62014		ELBOW	1				
26	15156-41803		ADAPTOR	2				

TRAVEL DRIVE

Item	Part Number	Lev.	Description	Q'ty	Chan.	Serial No.	Mod.	Remarks
	14216-00018	.	WASHER, seal	1				
27	00036-00220		SHIM	AR				t=0.5mm
28	05616-00015		BUSHING	1				
29	00072-10027		BUSHING	2				
30	16522-31140		BAND	4				
31	00072-13094		BUSHING	1				
32	14216-01014		O-RING	1				
33	15133-90041		CROSS	1				
	14200-10140	.	O-RING	1				
34	15139-00003		SOCKET	1				
35	00072-03048		ADAPTOR	2				
36	15111-50201		ELBOW	4				
37	05616-00018		BUSHING	1				
38	19347-22040		HOSE ASSY	1				
39	19347-22030		HOSE ASSY	1				
40	19347-22038		HOSE ASSY	1				
41	00072-13081		BUSHING	2				
42	15150-10131		ELBOW	2				
	14200-10140	.	O-RING	1				
43	14216-00018		WASHER, seal	2				
44	19030-11200		MOTOR, travel	1				
45	15156-00573		ADAPTOR	1				
	14200-10180	.	O-RING	1				
46	15150-12040		ELBOW	2				
	14200-10110	.	O-RING	1				
47	15133-00022		ELBOW	1				
	14200-10110	.	O-RING	1				

[Memo]

TRAVEL DRIVE



W7A020

S=1/12.1/20

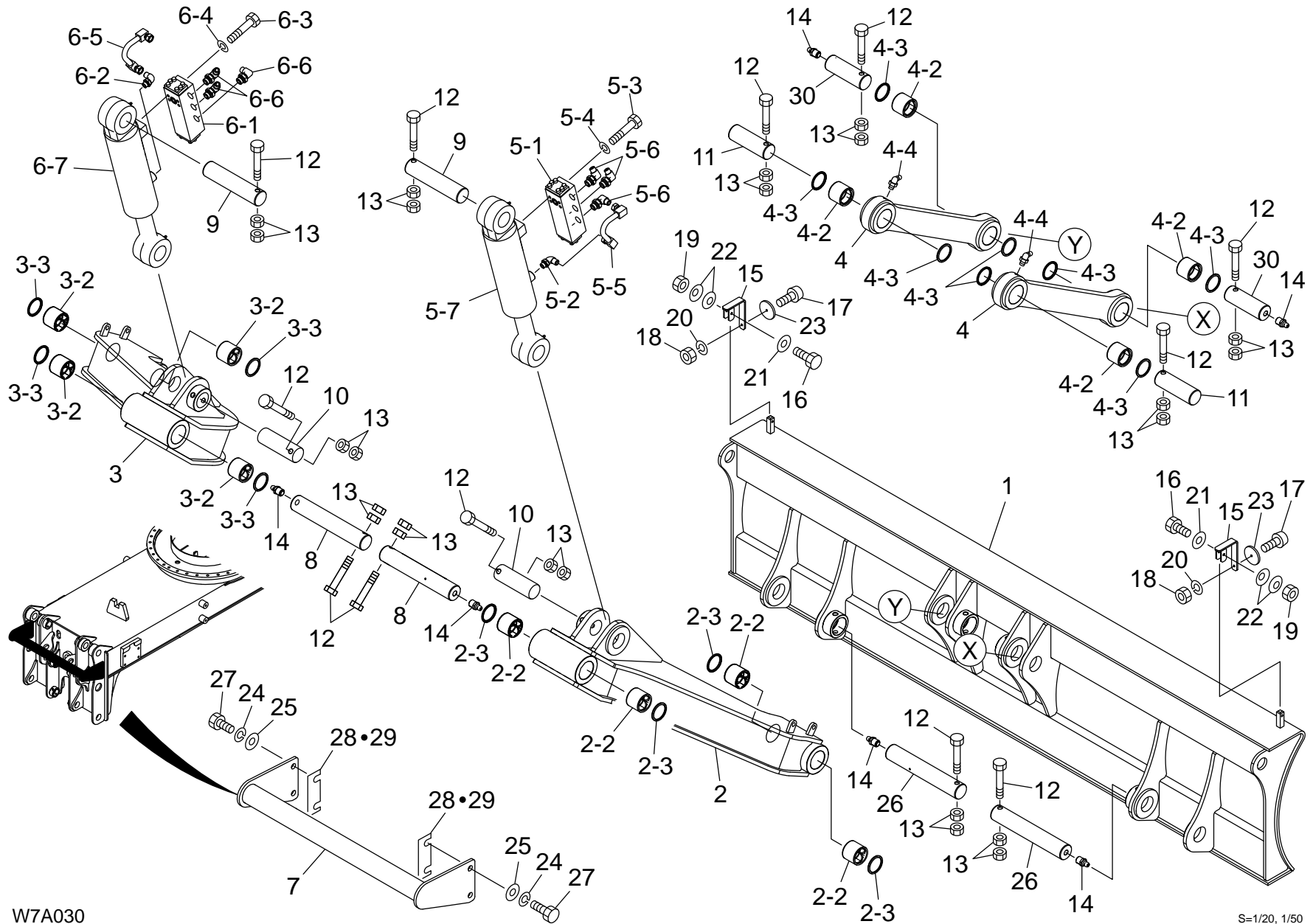
TRAVEL DRIVE

Item	Part Number	Lev.	Description	Q'ty	Chan.	Serial No.	Mod.	Remarks
			DRIVE ASSY, travel					
1	05616-17310		PLATE	2				
2	05616-17320		PLATE	2				
3	05616-00004		PIN	1				
4	11310-40010		NUT	16				
5	11327-51020		NUT	8				
6	19160-40900		AXLE, front	1				see Axle, front(1/6)
7	19160-41000		AXLE, rear	1				see Axle, rear(1/7)
8	19160-40700		SHAFT, drive	1				
9	19001-12400		CYLINDER, ram lock	2				
10	11064-41025		BOLT	16				
11	11001-41220		BOLT	1				
12	11110-41645		SCREW, cap	8				
13	11003-42040		BOLT	8				
14	11100-41470		SCREW, cap	6				
15	00039-00091		WASHER	12				
16	11415-50020		WASHER	16				
17	11300-40012		NUT	2				
18	11404-20014		WASHER, spring	6				
19	11100-41645		SCREW, cap	4				
20	14216-00014		WASHER, seal	1				
21	00072-00236		ADAPTOR	1				
22	15156-51402		ADAPTOR	2				
	14216-01014		O-RING	1				
23	15156-51403		ADAPTOR	4				
	14216-01014		O-RING	1				
24	15600-01000		FITTING, grease	4				
25	00072-62014		ELBOW	1				
26	15156-41803		ADAPTOR	2				

TRAVEL DRIVE

Item	Part Number	Lev.	Description	Q'ty	Chan.	Serial No.	Mod.	Remarks
	14216-00018	.	WASHER, seal	1				
27	00036-00220		SHIM	AR				t=0.5mm
28	05616-00015		BUSHING	1				
29	00072-10027		BUSHING	2				
30	16522-31140		BAND	4				
31	00072-13094		BUSHING	1				
32	14216-01014		O-RING	1				
33	15133-90041		CROSS	1				
	14200-10140	.	O-RING	1				
34	15139-00003		SOCKET	1				
35	00072-03048		ADAPTOR	2				
36	15111-50201		ELBOW	4				
37	05616-00018		BUSHING	1				
38	19347-22040		HOSE ASSY	1				
39	19347-22030		HOSE ASSY	1				
40	19347-22038		HOSE ASSY	1				
41	00072-13081		BUSHING	2				
42	15150-10131		ELBOW	2				
	14200-10140	.	O-RING	1				
43	14216-00018		WASHER, seal	2				
44	19030-11200		MOTOR, travel	1				
45	15156-00573		ADAPTOR	1				
	14200-10180	.	O-RING	1				
46	15150-12040		ELBOW	2				
	14200-10110	.	O-RING	1				
47	15133-00022		ELBOW	1				
	14200-10110	.	O-RING	1				

DOZER BLADE



W7A030

S=1/20, 1/50



Suggest:

For more complete manuals. Please go to the home page.

<https://www.ebooklibonline.com>

If the above button click is invalid. Please download this document first, and then click the above link to download the complete manual.

Thank you so much for reading

DOZER BLADE

Item	Part Number	Lev.	Description	Q'ty	Chan.	Serial No.	Mod.	Remarks
			BLADE ASSY, dozer					
1	05663-00114		BLADE, dozer	1				
2	05663-00056		ARM (L.H.), blade	1				
2-2	00024-00025	.	BUSHING	4				
2-3	14322-00050	.	SEAL, dust	4				
3	05663-00057		ARM (R.H.), blade	1				
3-2	00024-00025	.	BUSHING	4				
3-3	14322-00050	.	SEAL, dust	4				
4	05663-00112		LINK, bucket	2				
4-2	00024-00112	.	BUSHING	2				
4-3	14322-00050	.	SEAL, dust	4				
4-4	15600-00321	.	FITTING, grease	1				
5	*****-*****		CYLINDER ASSY, dozer blade	1				
5-1	19017-60400	.	VALVE, check	1				
5-2	15150-12041	.	ELBOW	1				
	14200-10140	..	O-RING	1				
5-3	11000-40875	.	BOLT	4				
5-4	11400-20008	.	WASHER, spring	4				
5-5	05663-00040	.	PIPE	1				
5-6	15150-10051	.	ELBOW	3				
	14200-10180	..	O-RING	1				
5-7	19001-14200	.	CYLINDER, dozer blade	1				
6	*****-*****		CYLINDER ASSY, dozer blade	1				
6-1	19017-60400	.	VALVE, check	1				
6-2	15150-12041	.	ELBOW	1				
	14200-10140	..	O-RING	1				
6-3	11000-40875	.	BOLT	4				
6-4	11400-20008	.	WASHER, spring	4				
6-5	05663-00040	.	PIPE	1				

DOZER BLADE

Item	Part Number	Lev.	Description	Q'ty	Chan.	Serial No.	Mod.	Remarks
6-6	15150-10051	.	ELBOW	3				
	14200-10180	. .	O-RING	1				
6-7	19001-14200	.	CYLINDER, dozer blade	1				
7	05663-00092		PIPE	1				
8	00016-75007		PIN	2				
9	00016-05225		PIN	2				
10	00016-05150		PIN	2				
11	00016-15015		PIN	2				
12	11011-41200		BOLT	12				
13	11305-40012		NUT	24				
14	15600-01000		FITTING, grease	6				
15	05763-06430		PLATE ASSY	2				
16	11000-40630		BOLT	2				
17	11205-30515		SCREW	2				
18	11300-40005		NUT	2				
19	11300-40006		NUT	2				
20	11400-20005		WASHER, spring	2				
21	11411-10006		WASHER	2				
22	12251-20006		WASHER, conical	4				
23	16566-00002		REFLECTOR (RED)	2				
24	11400-20016		WASHER, spring	4				
25	11411-10016		WASHER	4				
26	05663-00104		PIN	2				
27	11010-41635		BOLT	4				
28	05663-00105		SPACER	AR				t=1.0mm
29	05663-00106		SPACER	AR				t=2.3mm
30	05663-00111		PIN	2				

<https://www.ebooklibonline.com>

Hello dear friend!

Thank you very much for reading.

Enter the link into your browser.

The full manual is available for immediate download.

<https://www.ebooklibonline.com>