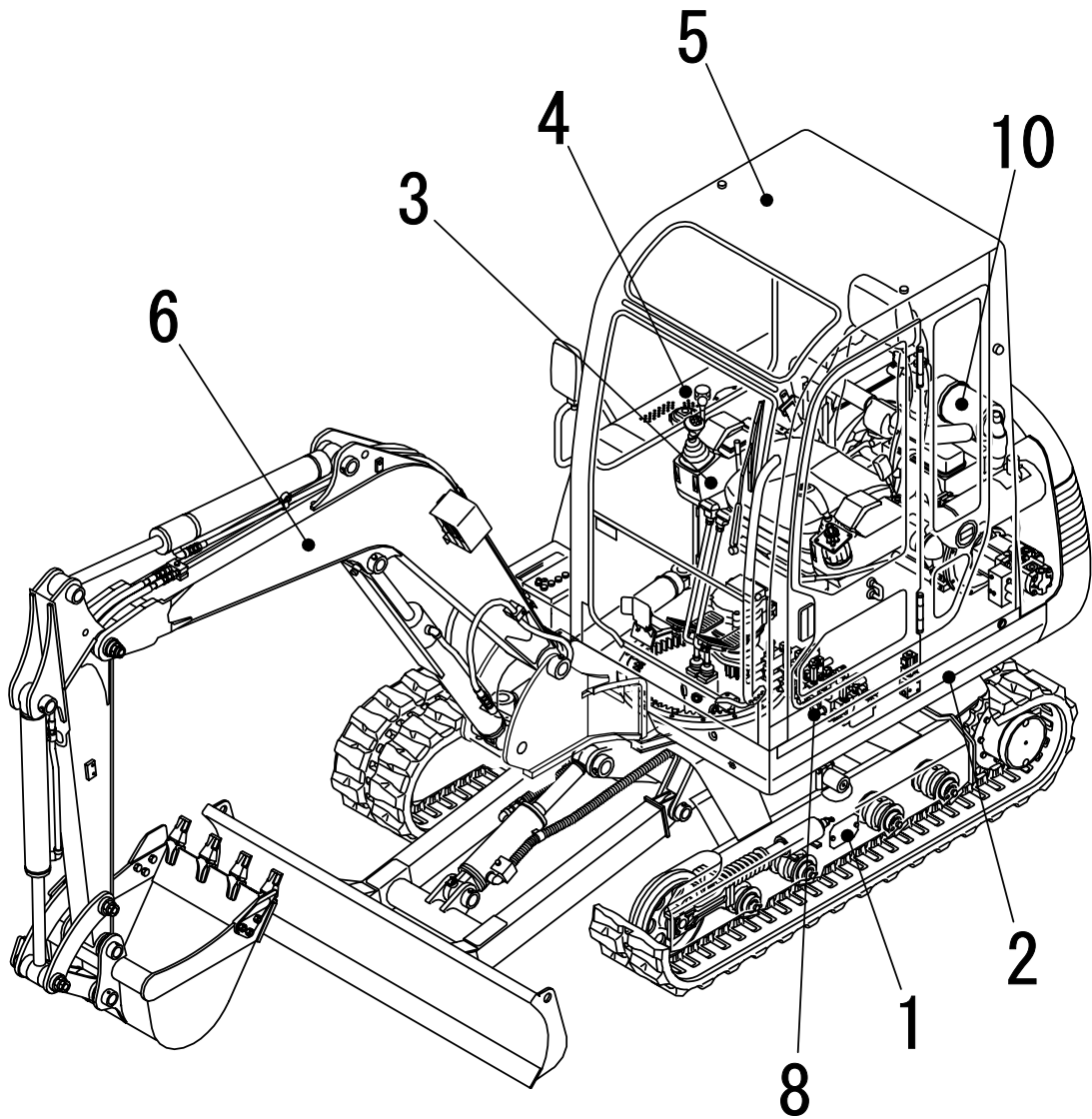


INDEX

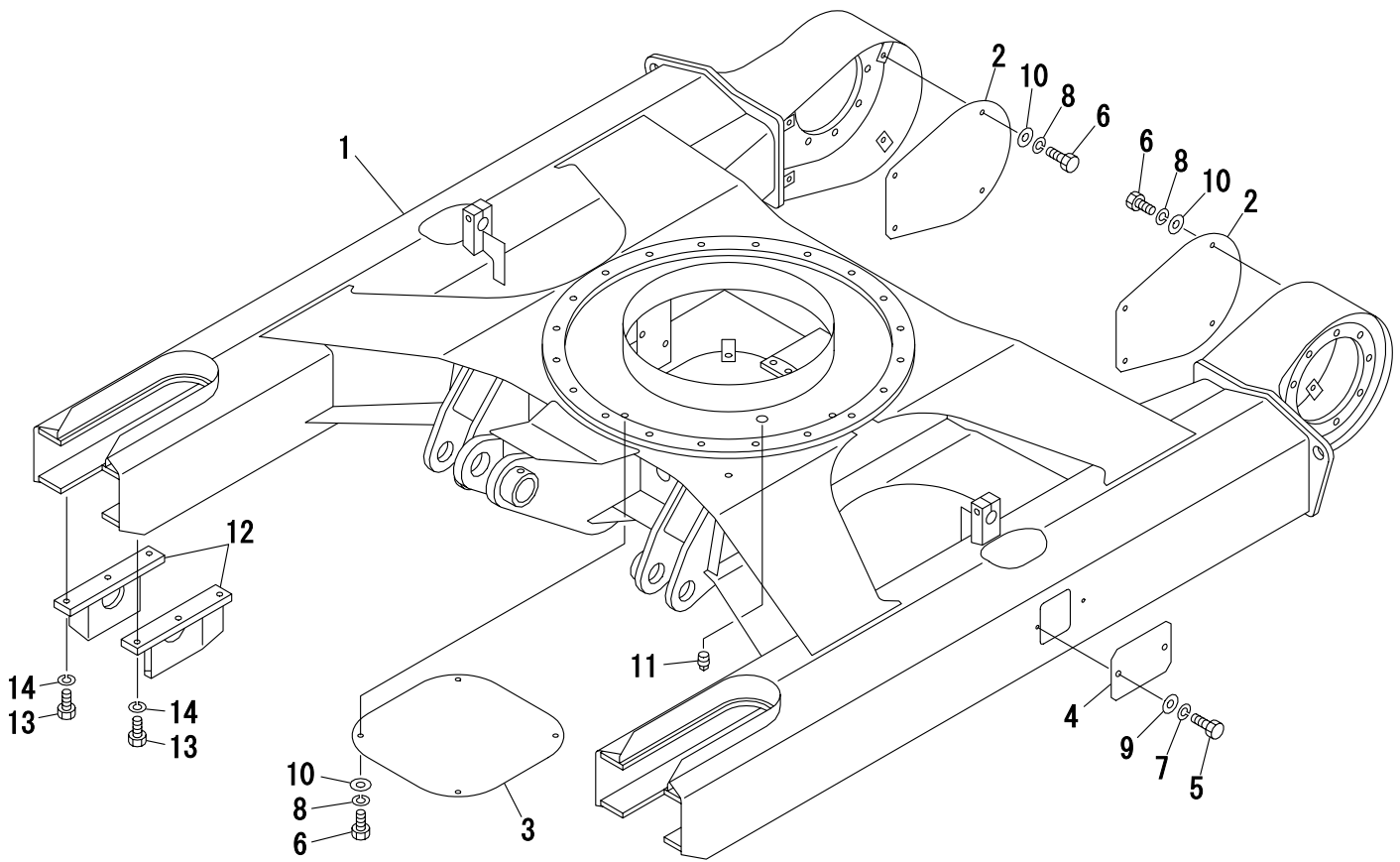
TB150C

Book No.BK6C000
Serial No. 15040001-



TAKEUCHI

LOWER FRAME



J2A010

S=1/14

下车架

Item	Part number	Description	中文	Q'ty	Chan.	Serial No.	Mod.	Remarks
		FRAME ASSY, lower	下车架总成					X03910-12500-0
1	x*****	FRAME	支座		1			
2	03910-04002	COVER	盖		2			
3	03910-04003	COVER	盖		1			
4	05610-17400	COVER	盖		2			
5	11000-40816	BOLT	螺栓		4			
6	11000-41020	BOLT	螺栓		12			
7	11400-20008	WASHER, spring	弹簧垫圈		4			
8	11400-20010	WASHER, spring	弹簧垫圈		12			
9	11411-10008	WASHER	垫圈		4			
10	11411-10010	WASHER	垫圈		12			
11	15087-10010	PLUG	螺塞		1			
12	04610-00700	GUIDE, shoe	导向块		4			
13	11010-41230	BOLT	螺栓		12			
14	11400-20012	WASHER, spring	弹簧垫圈		12			
	K6a010							

<https://www.ebooklibonline.com>

Hello dear friend!

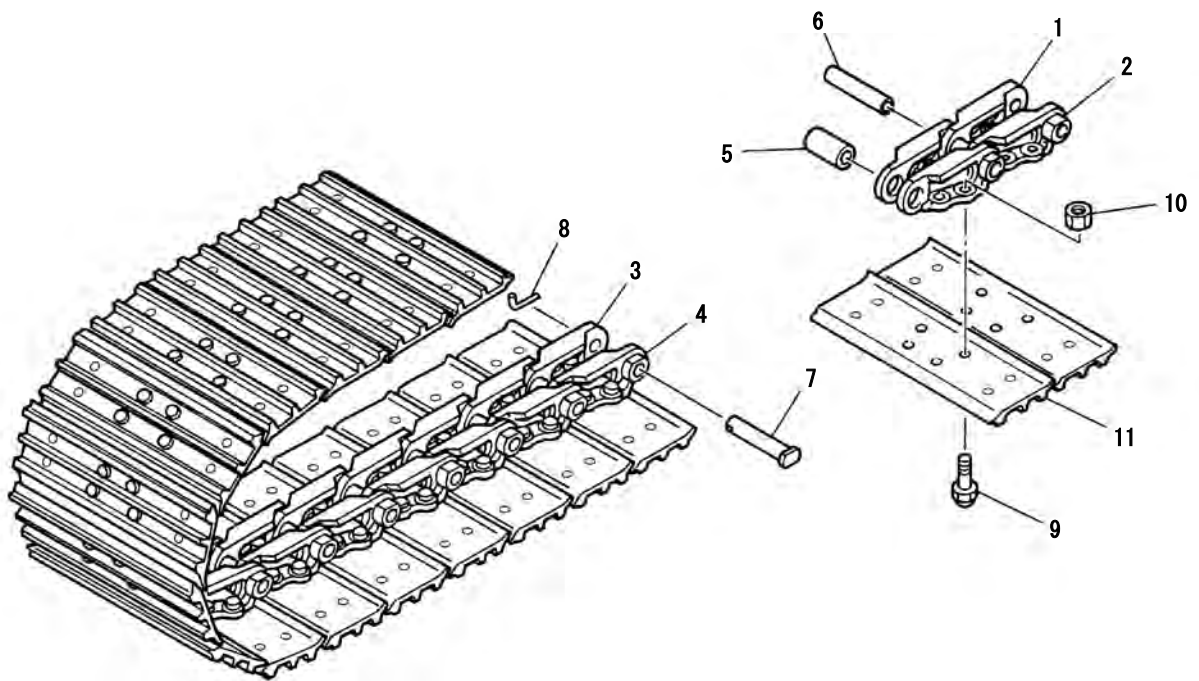
Thank you very much for reading.

Enter the link into your browser.

The full manual is available for immediate download.

<https://www.ebooklibonline.com>

CRAWLER BELT

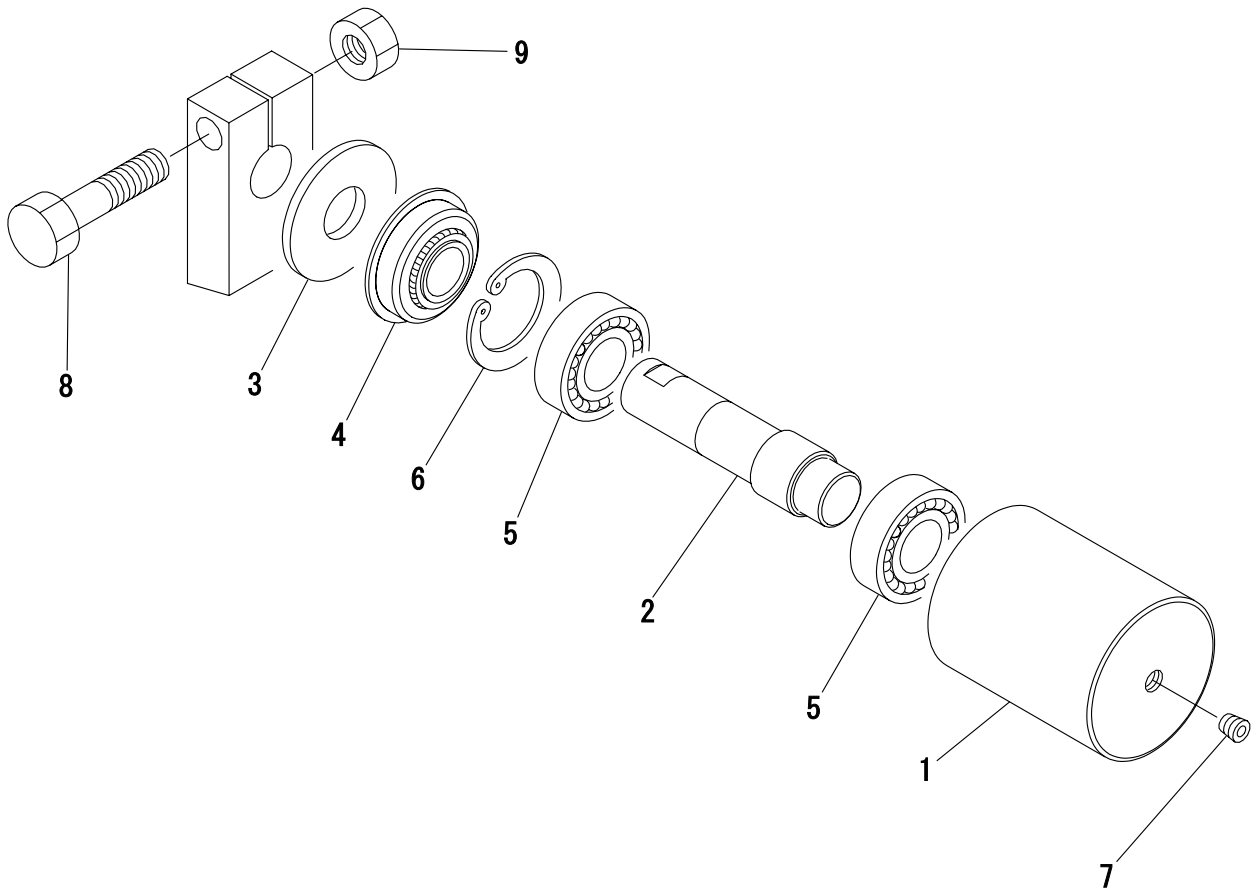


K6A020

履带

Item	Part number	Description	中文	Q'ty	Chan.	Serial No.	Mod.	Remarks
0	19140-51600	BELT, steel crawler	钢履带	2				X19140-51600-0
1	19140-39001	★LINK (R.H.)	★右链轨节	37				
2	19140-39002	★LINK (L.H.)	★左链轨节	37				
3	19140-39003	★LINK, master (R.H.)	★右主链轨节	1				
4	19140-39004	★LINK, master (L.H.)	★左主链轨节	1				
5	19140-39012	★BUSHING	★轴套	38				
6	19140-39006	★PIN, track	★履带销轴	37				
7	19140-39007	★PIN, master	★主销	1				
8	19140-39008	★PIN	★销	1				
9	19140-39009	★BOLT	★螺栓	152				
10	19140-33010	★NUT	★螺母	152				
11	19140-51611	★PLATE, shoe	★履带板	38				
	K6a020							

CARRIER ROLLER

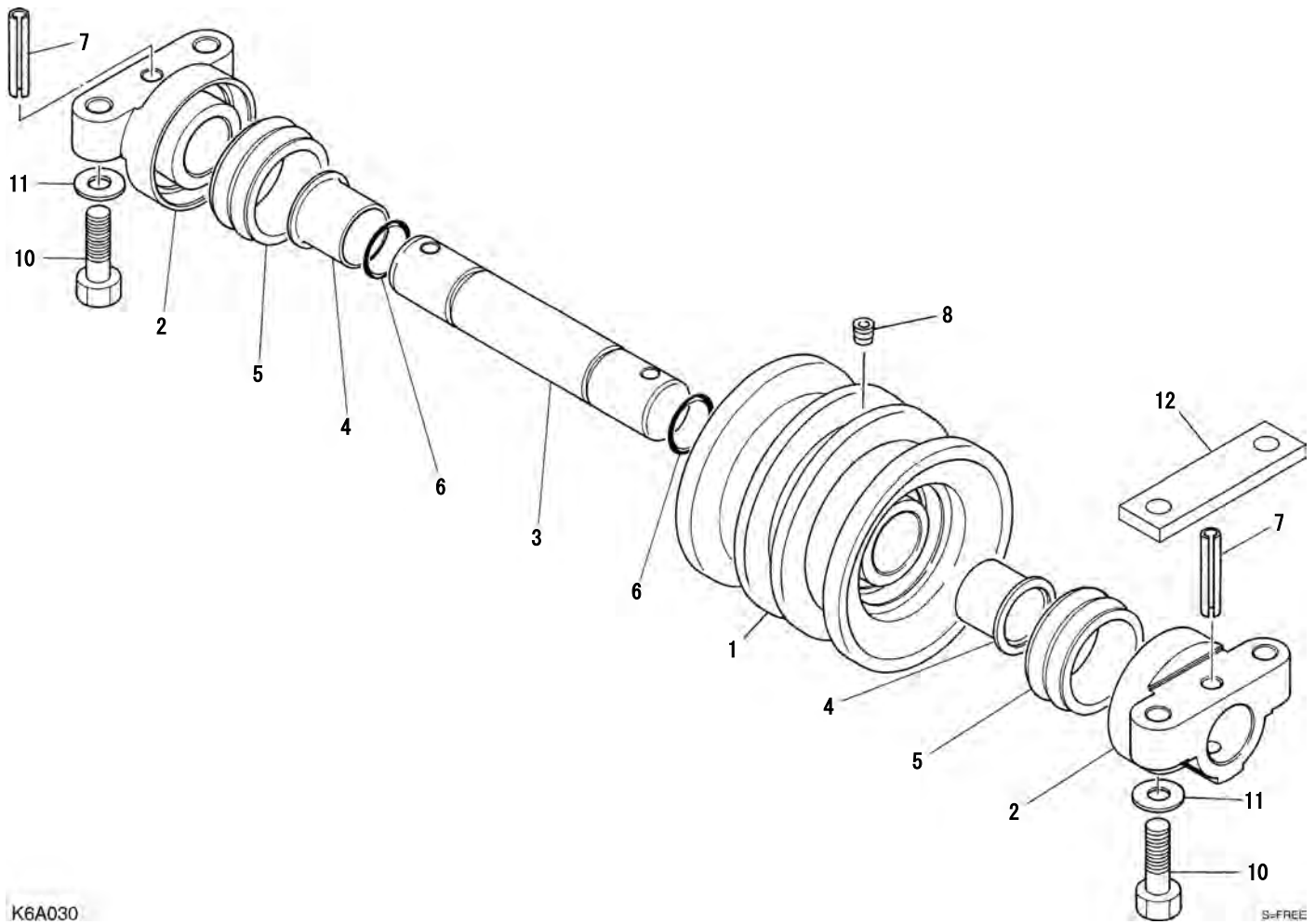


G4A100

托链轮

Item	Part number	Description	中文	Q'ty	Chan.	Serial No.	Mod.	Remarks
		ROLLER ASSY, carrier	托链轮总成					X03912-00000-1
0-1	03912-00100	ROLLER SUB ASSY	滚轮组件	2				
1	03912-00110	★ROLLER	★滚轮壳体	1				
2	03912-00120	★SHAFT	★轴	1				
3	01412-01300	★COVER	★盖	1				
4	14312-03062	★SEAL	★密封圈	1				
5	13000-06206	★BEARING	★轴承	2				
6	12210-00062	★RING, snap	★弹簧锁圈	1				
7	15018-20001	★PLUG	★螺塞	1				
8	11010-41670	BOLT	螺栓	2				
9	11305-40016	NUT	螺母	2				
	K3a140							

TRACK ROLLER



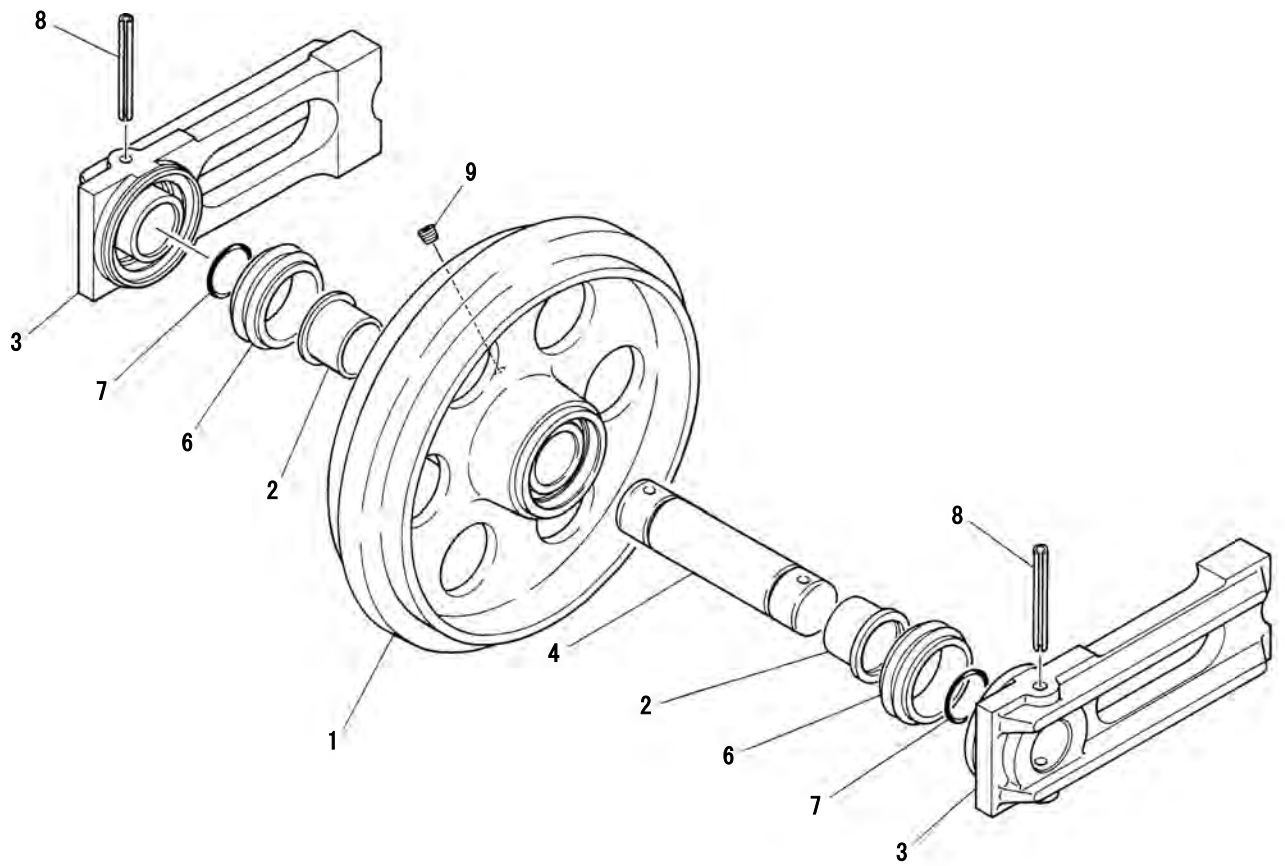
K6A030

S=FREE

支重轮

Item	Part number	Description	中文	Q'ty	Chan.	Serial No.	Mod.	Remarks
		ROLLER ASSY, track	支重轮总成					X03913-03000-5
0-1	03913-02100	ROLLER SUB ASSY, track	滚轮组件	10				
1	03913-02300	★ROLLER	★滚轮壳体	1				
2	04613-00300	★COVER	★盖	2				
3	04613-00400	★SHAFT	★轴	1				
4	13330-73535	★BUSHING	★轴套	2				
5	14325-00560	★SEAL, floating	★浮动油封	2				
6	14201-00300	★O-RING	★O形圈	2				
7	12130-01055	★PIN, spring	★弹簧销	2				
8	15018-10001	★PLUG	★螺塞	2				
10	11010-51255	BOLT	螺栓	40				
11	11415-40012	WASHER	垫圈	40				
12	03913-00400	PLATE	板	20				
	K6a030							

FRONT IDLER



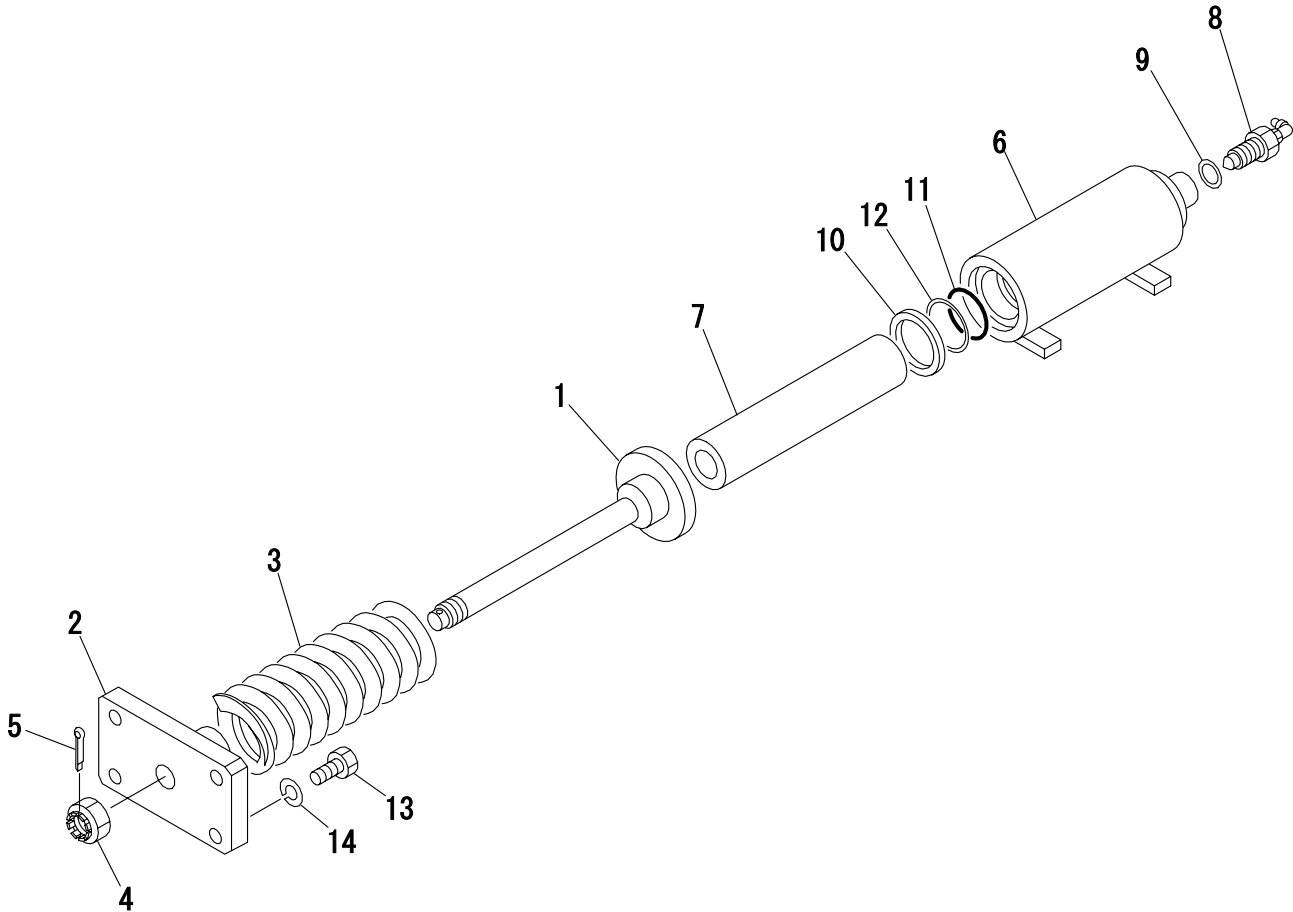
K3A050

S=FREE

导向轮

Item	Part number	Description	中文	Q'ty	Chan.	Serial No.	Mod.	Remarks
		IDLER ASSY, front	导向轮总成					X04614-01000-4
0-1	04614-90010	IDLER ASSY, sub	轮体总成	2				
1	04614-01100	★IDLER	★导向轮	1				
2	13330-64540	★BUSHING	★轴套	2				
3	04614-00300	★BLOCK	★滑块	2				
4	04614-00400	★SHAFT	★轴	1				
6	14325-00640	★SEAL, floating	★浮动油封	2				
7	14201-00400	★O-RING	★O形圈	2				
8	12131-01000	★PIN, spring	★弹簧销	2				
9	15018-10001	★PLUG	★螺塞	2				
	K3a053							

TRACK ADJUSTER



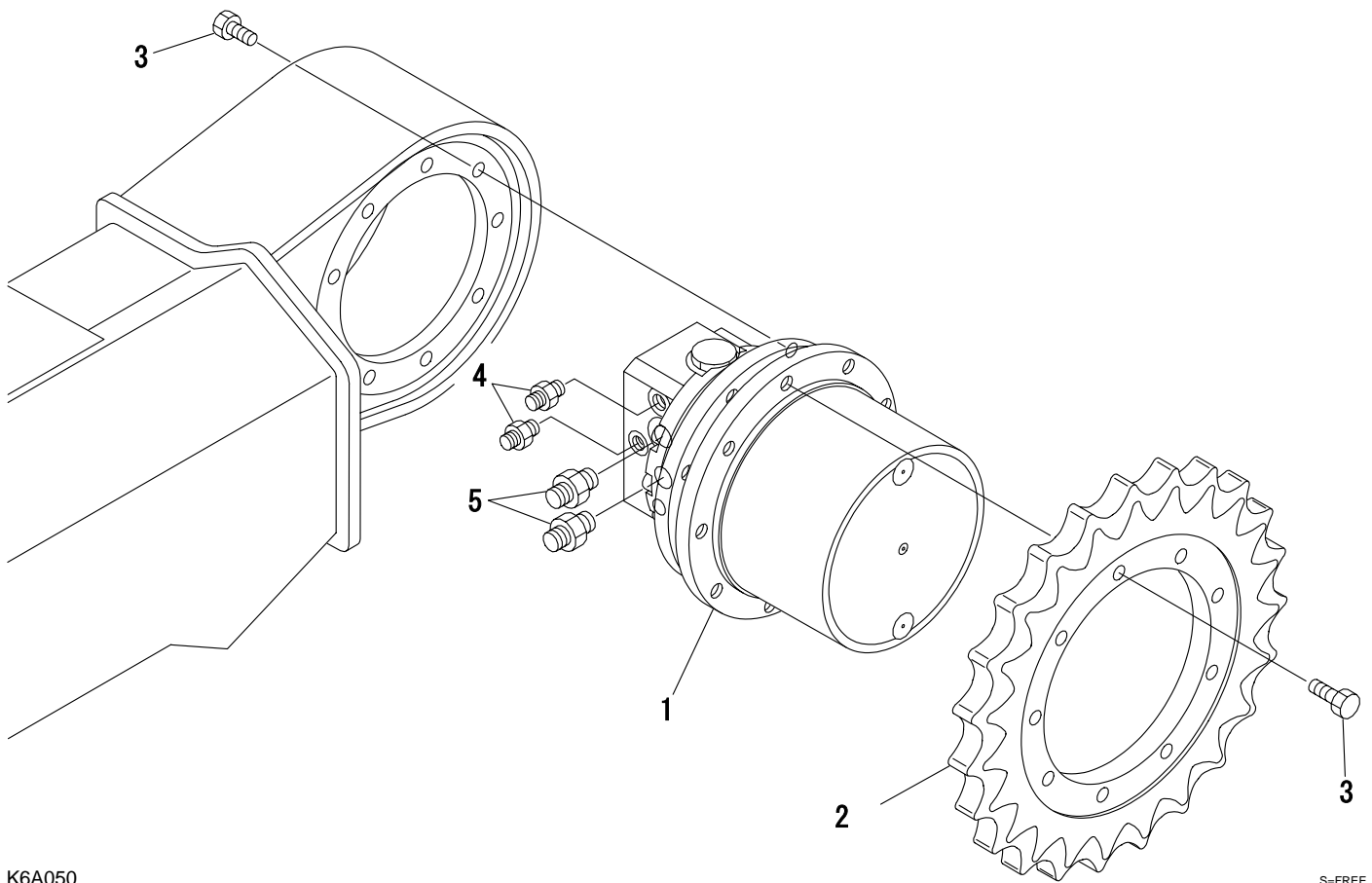
J2A030

S=FREE

履带涨紧机构

Item	Part number	Description	中文	Q'ty	Chan.	Serial No.	Mod.	Remarks
0-1	03915-08100	SPRING ASSY	弹簧总成					X03915-08000-1
	03915-08100	SPRING SUB ASSY	弹簧部件	2				
1	08811-51200	★ROD	★杆	1				
2	03915-08120	★PLATE	★板	1				
3	00070-00002	★SPRING	★弹簧	1				
4	11325-30027	★NUT	★螺母	1				
5	12100-00545	★PIN, split	★开口销	1				
0-2	03915-08200	CYLINDER ASSY, grease	黄油缸总成	2				
6	03915-08210	★CYLINDER, grease	★黄油缸	1				
7	03915-08220	★PISTON	★活塞	1				
8	15413-01602	★VALVE ASSY, check	★单项伐总成	1				
9	15412-01616	★WASHER	★垫圈	1				
10	14004-03038	★SEAL	★密封圈	1				
11	14220-10550	★O-RING	★O形圈	1				
12	14210-20550	★RING, back-up	★支承环	1				
13	11010-41245	BOLT	螺栓	8				
14	11400-20012	WASHER, spring	弹簧垫圈	8				
	J2a030							

TRAVEL DEVICE



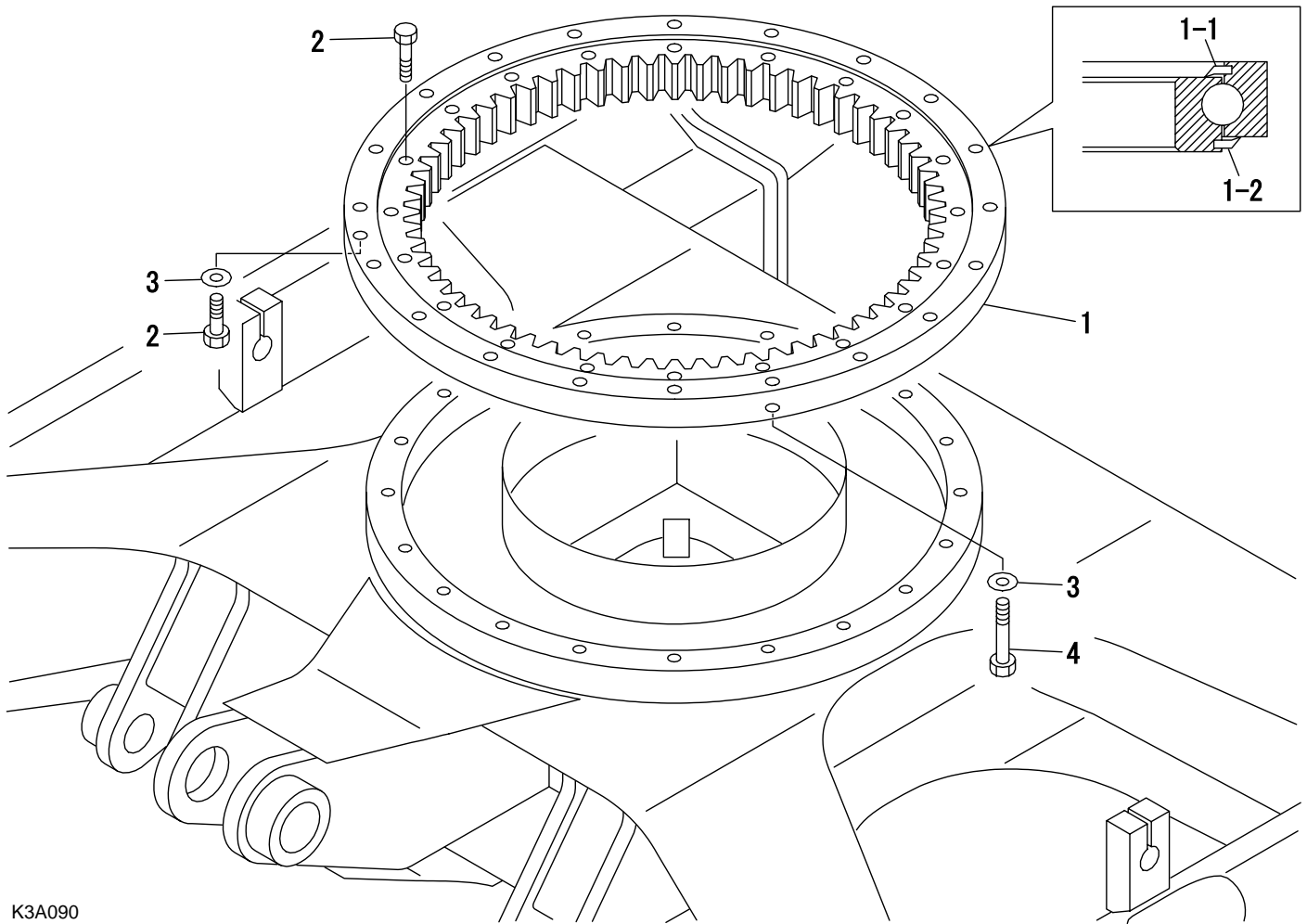
K6A050

S=FREE

行走装置

Item	Part number	Description	中文	Q'ty	Chan.	Serial No.	Mod.	Remarks
		MOTOR ASSY, travel	行走马达总成					X03916-06000-0
1	19031-24800	MOTOR, travel	行走马达	2				
2	02616-03100	SPROCKET	驱动链轮	2				
3	11000-51435	BOLT	螺栓	36				
4	15156-00200	ADAPTOR	接头	4				
	14200-10110	★O-RING	★O形圈	1				
5	15156-00202	ADAPTOR	接头	4				
	14200-10180	★O-RING	★O形圈	1				
	K6a050							

SLEW BEARING



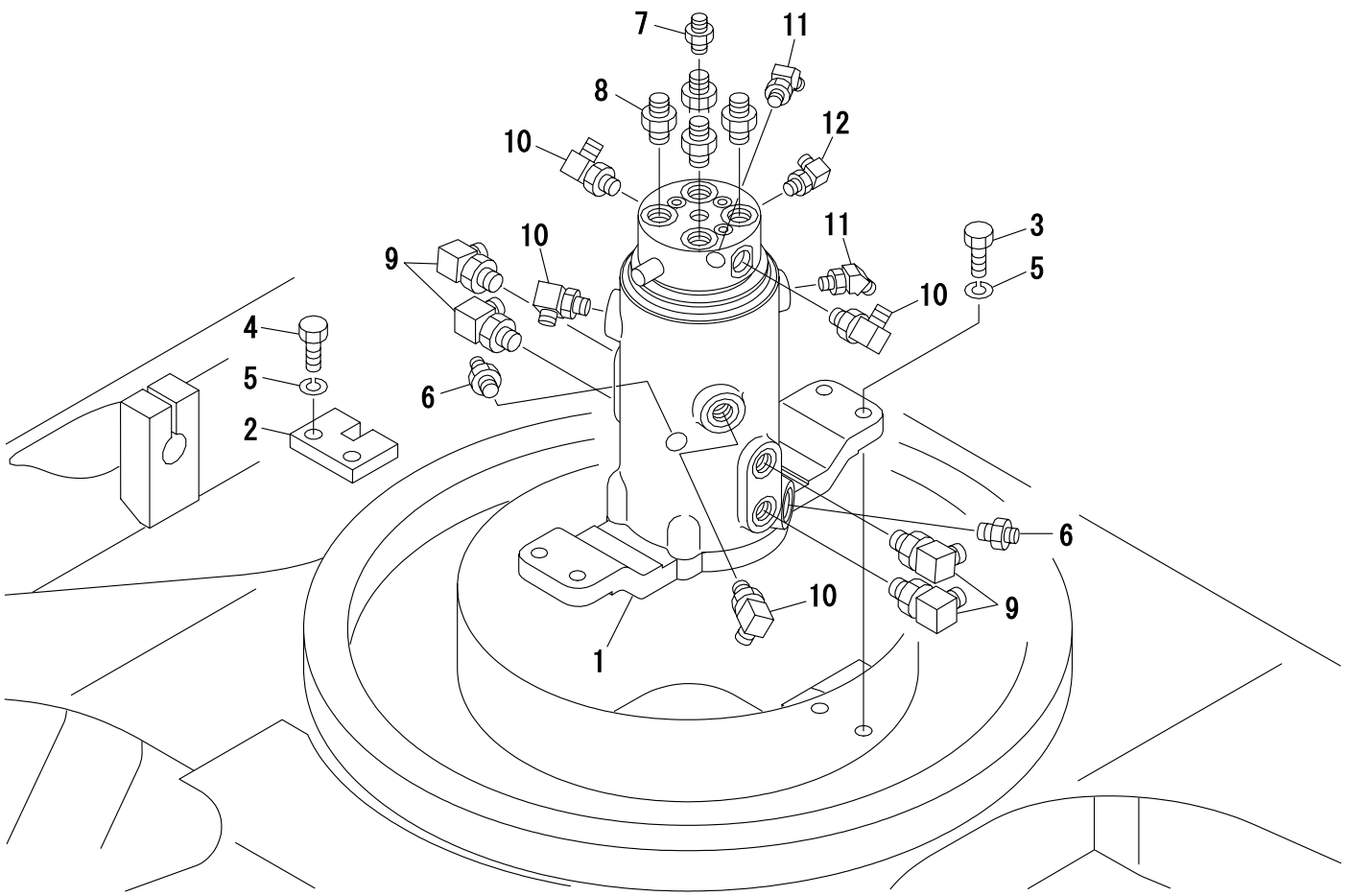
K3A090

S=FREE

回转支承

Item	Part number	Description	中文	Q'ty	Chan.	Serial No.	Mod.	Remarks
		BEARING ASSY, slew	回转支承					X03920-00000-1
1	19130-03500	BEARING	轴承		1			
1-1	19130-03508	★SEAL	★密封圈		1			
1-2	19130-03509	★SEAL	★密封圈		1			
2	11010-51680	BOLT	螺栓		39			
3	11415-40016	WASHER	垫圈		20			
4	03920-00100	BOLT	螺栓		1			
	K3a090							

SWIVEL JOINT & ACCESSORIES



K6A060

S=FREE



Suggest:

For more complete manuals. Please go to the home page.

<https://www.ebooklibonline.com>

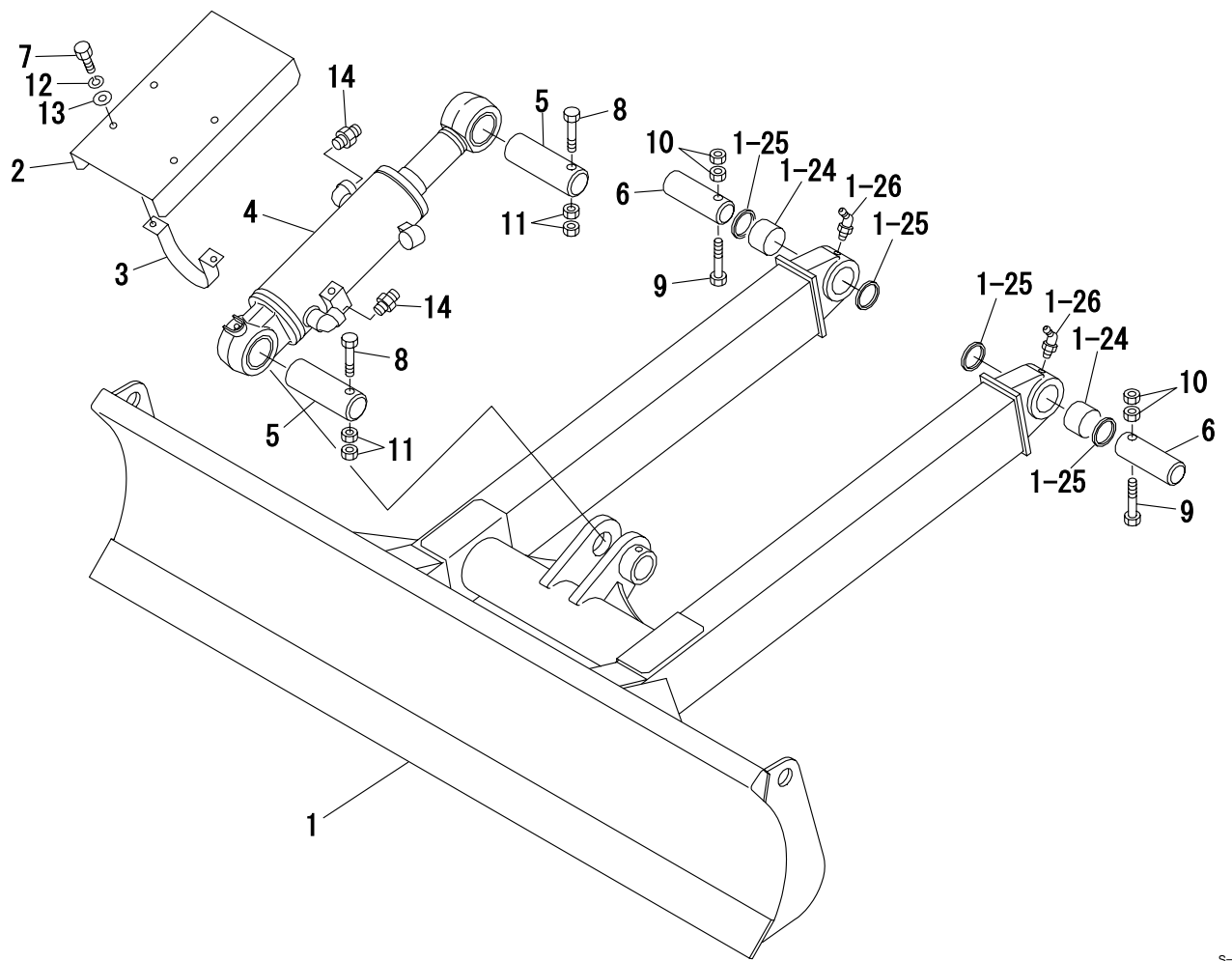
If the above button click is invalid. Please download this document first, and then click the above link to download the complete manual.

Thank you so much for reading

回转接头和附件

Item	Part number	Description	中文	Q'ty	Chan.	Serial No.	Mod.	Remarks
		JOINT ASSY, swivel	回转接头总成					X03921-02000-1
1	19040-06300	JOINT, swivel	回转接头	1				
2	04421-00100	STOPPER	挡块	1				
3	11010-41245	BOLT	螺栓	4				
4	11010-41240	BOLT	螺栓	2				
5	11400-20012	WASHER, spring	弹簧垫圈	6				
6	00072-03057	NIPPLE	接头	2				
7	15110-50003	ADAPTOR	接头	1				
8	15156-00202	ADAPTOR	接头	4				
	14200-10180	★O-RING	★O形圈	1				
9	15150-10042	ELBOW	直角接头	4				
	14200-10180	★O-RING	★O形圈	1				
10	15150-10041	ELBOW	直角接头	4				
	14200-10140	★O-RING	★O形圈	1				
11	15151-00110	ELBOW	直角接头	2				
	14200-10110	★O-RING	★O形圈	1				
12	15150-12040	ELBOW	直角接头	1				
	14200-10110	★O-RING	★O形圈	1				
	K6a060							

DOZER BLADE



K3A160

S=FREE

<https://www.ebooklibonline.com>

Hello dear friend!

Thank you very much for reading.

Enter the link into your browser.

The full manual is available for immediate download.

<https://www.ebooklibonline.com>