

Engine

X7.6 Tier 4i (2013- ) - RPE2 - X7.660

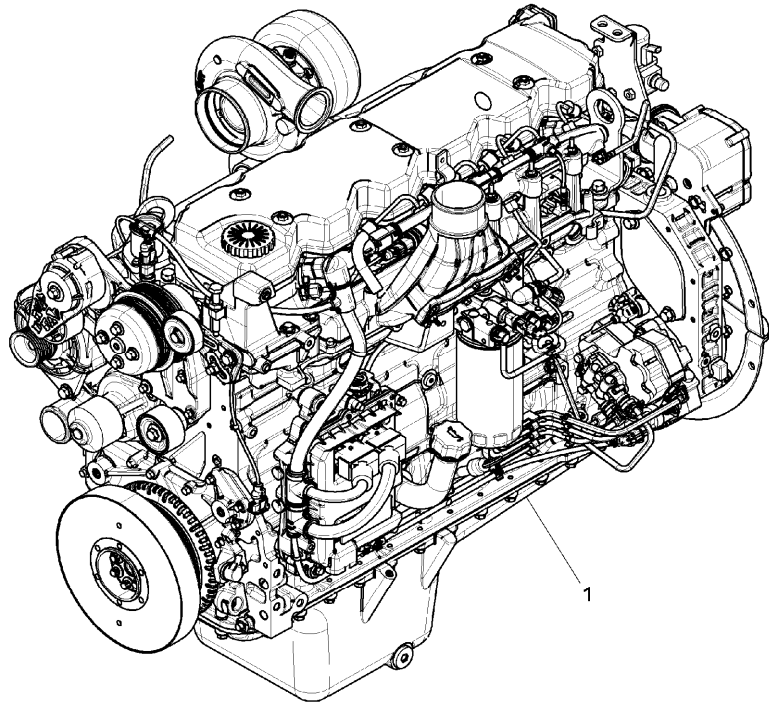
RPE2\00042127.png

A-05  
01



A0501

Engine assembly



			Inglese
1	6518800M91	"fpt nef" 140 kw	1 Engine
1	6524949M91	"fpt nef" 140 kw	1 Engine
	A		
	B		
	C		
1	6532051M91	"fpt nef" 129 kw	1 Engine
	D		
	E		
	F		
A	Flexibility engine		
B	Cee		
C	Nao		
D	Tier 3		
E	Excluded "c.e.e." market		
F	Excluded "n.a.o." market		

Engine

X7.6 Tier 4i (2013- ) - RPE2 - X7.660

RPE2\00041500.png

A-05  
015



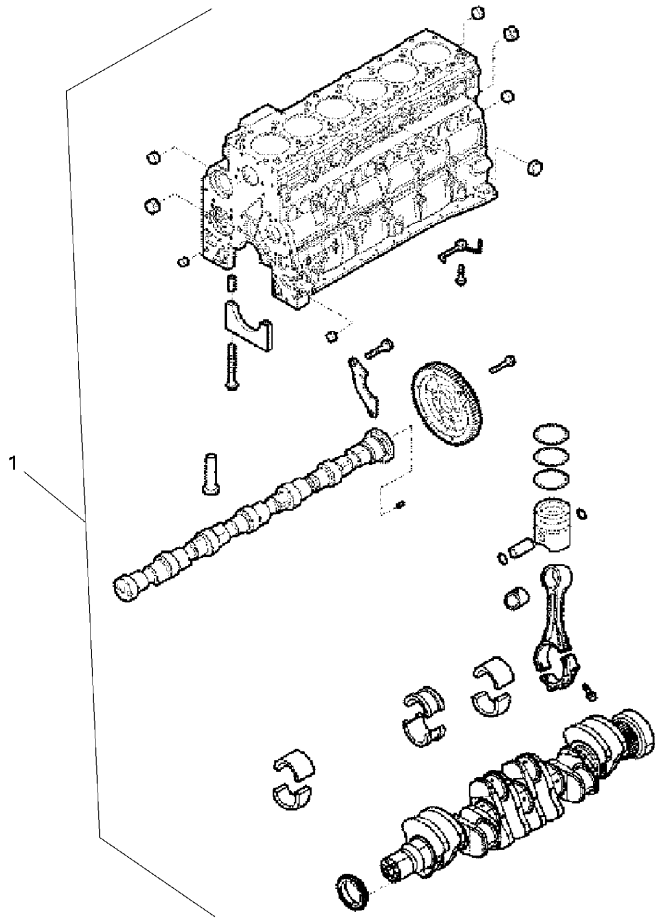
A05015

Short engine

1 6513390M91

Inglese

1 Short engine



Engine

X7.6 Tier 4i (2013- ) - RPE2 - X7.660

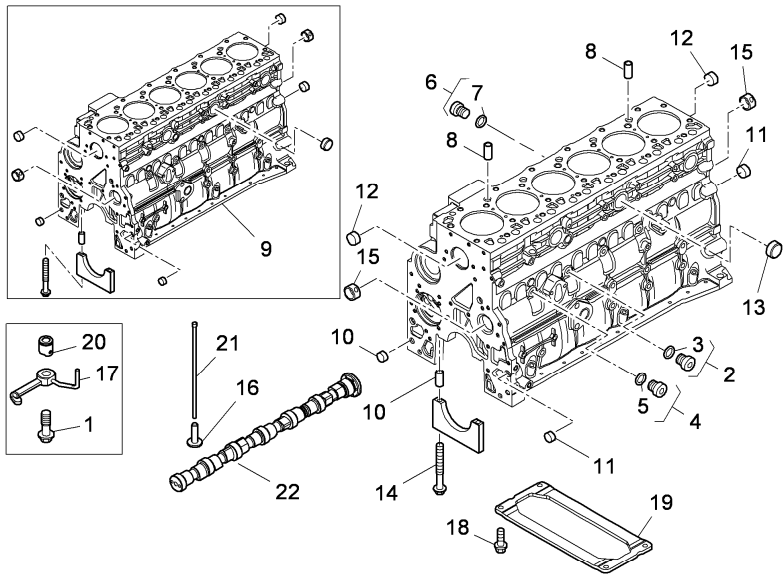
RPE2\00044815.png

A-05  
02



A0502

Crankcase



		Inglese
1	3688692M1	6 Filler
2	3689350M1	2 Plug
3	3688868M1	1 O ring
4	3688822M1	2 Plug
5	3688855M1	1 O ring
6	3688780M1	3 Plug
7	3688781M1	1 O ring
		707405A1(1)
8	3688760M1	2 Dowel pin
9	704604A1	1 Crankcase
10	3688824M1	14 Dowel pin
		704983A1(14)
11	3688758M1	3 Plug
		17,73x6,35x1,07
12	3688757M1	6 Plug
		58,06x8,25x1,52
13	3688775M1	3 Plug
		35,23x7,94x1,52
14	3688673M1	14 Screw
		M12x120 mm
		704696A1(14)
15	3688759M1	1 Bearing
16	3688877M1	12 Platform
17	3689030M1	6 Splasher
18	704985A1	4 Bolt
		M10x25 mm

**<https://www.ebooklibonline.com>**

Hello dear friend!

Thank you very much for reading.

Enter the link into your browser.

The full manual is available for immediate download.

**<https://www.ebooklibonline.com>**

Engine

X7.6 Tier 4i (2013- ) - RPE2 - X7.660

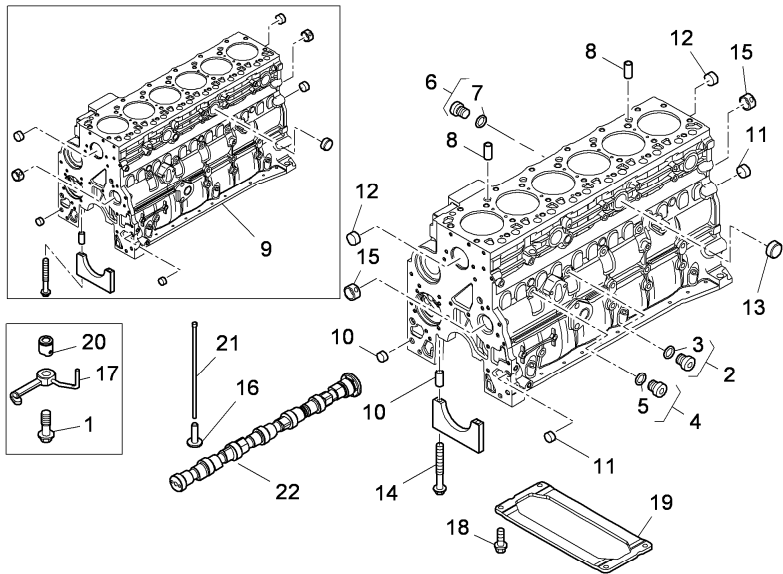
RPE2\00044815.png

A-05  
02



A0502

Crankcase



Inglese

- 19 705218A1
- 20 A-05 11 20
- 21 A-05 09 17
- 22 A-05 14 5
- ! This is a component of an assembly
- See page - reference number
- Length
- Replacement
- 1 Plate
- 6 Piston
- 12 Rod
- 1 Camshaft

Engine

X7.6 Tier 4i (2013- ) - RPE2 - X7.660

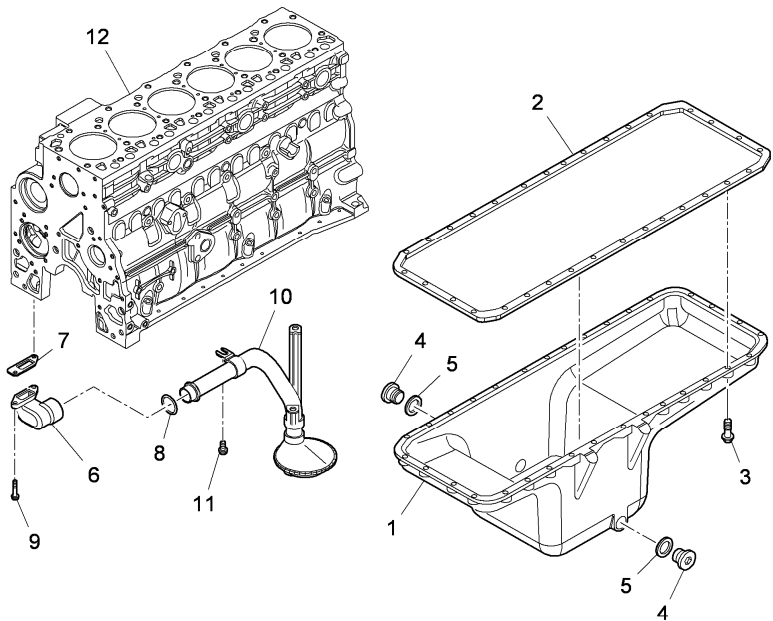
RPE2\00044816.png

A-05  
03



A0503

Oil sump



- |    |           |   |              |         |    |         |
|----|-----------|---|--------------|---------|----|---------|
| 1  | 705252A1  |   |              | Inglese | 1  | Housing |
| 2  | 705082A1  |   |              |         | 1  | Gasket  |
| 3  | 3688942M1 | ◄ | M8x30 mm     |         | 32 | Screw   |
|    |           | ● | 706309A1(32) |         |    |         |
| 4  | 3688691M1 |   |              |         | 2  | Plug    |
| 5  | 3688997M1 |   |              |         | 2  | O ring  |
| 6  | 705185A1  |   |              |         | 1  | Insert  |
| 7  | 704957A1  |   |              |         | 1  | Gasket  |
| 8  | 704589A1  |   |              |         | 1  | Gasket  |
| 9  | 710626A1  | ◄ | M8x25 mm     |         | 2  | Screw   |
| 10 | 705298A1  |   |              |         | 1  | Pipe    |
| 11 | 704827A1  | ◄ | M10x20 mm    |         | 1  | Screw   |
| 12 |           | ◁ | A-05 02 9    |         | 1  | Housing |

◁ See page - reference number

◄ Length

● Replacement

Engine

X7.6 Tier 4i (2013- ) - RPE2 - X7.660

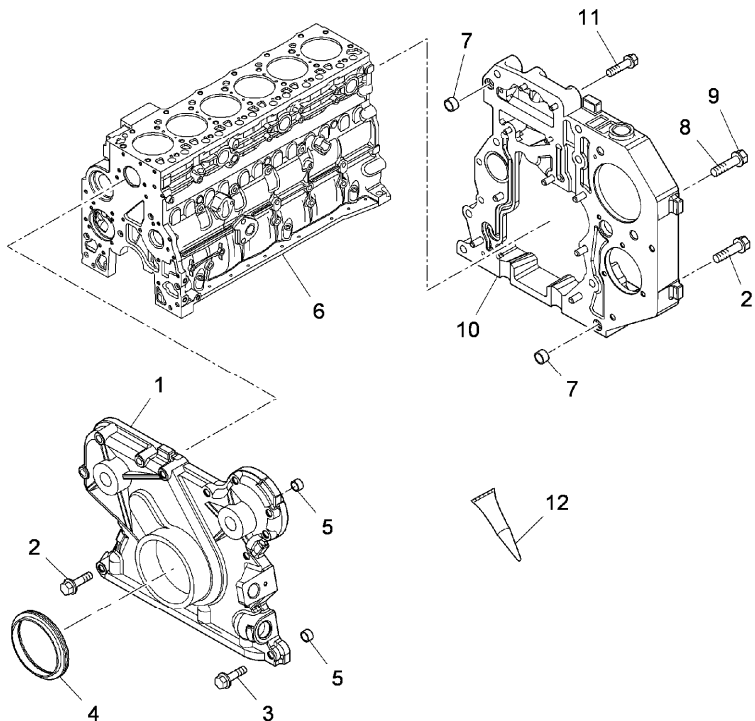
RPE2\00006689.png

A-05  
04



A0504

Crankcase covers



		Inglese
1	704913A1	1 Cover
2	705003A1	9 Screw
3	3688853M1	8 Screw
4	6513391M1	1 Ring
5	704693A1	2 Stud
6		1 Crankcase
7	3688824M1	2 Dowel pin
8	705015A1	2 Screw
9	704999A1	1 Screw
10	6513392M1	1 Box
11	704910A1	3 Screw
12	3688632M1	3688632M2(999) 999 Adhesive
	👁	See page - reference number
	↔	Length
	●	Replacement

Engine

X7.6 Tier 4i (2013- ) - RPE2 - X7.660

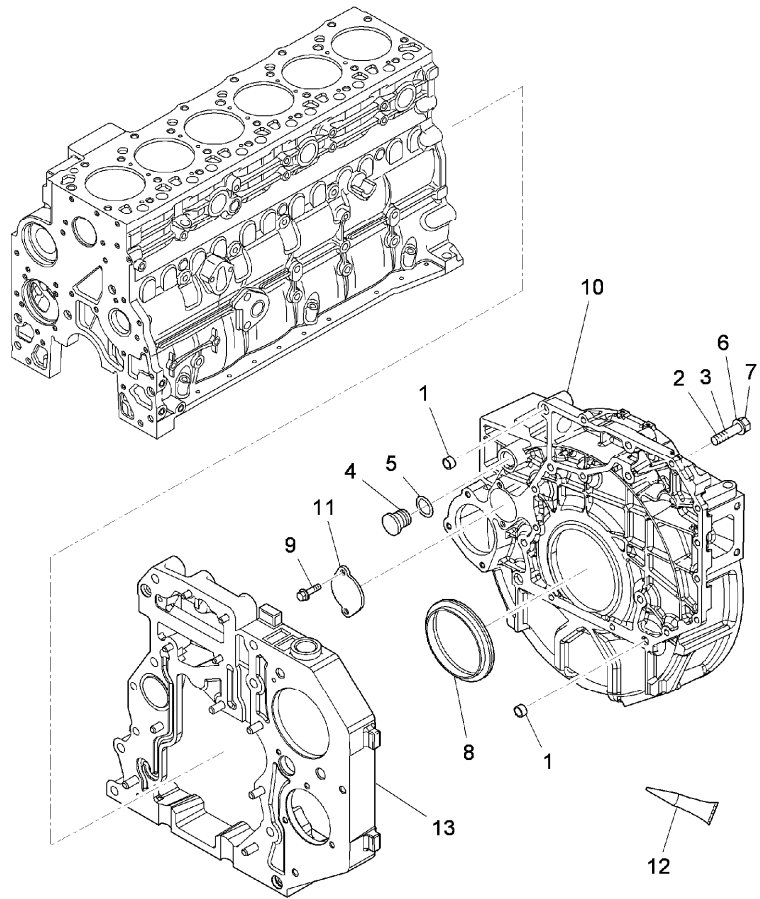
RPE2\00006690.png

A-05  
05



A0505

Flywheel housing



Inglese

- |    |           |   |                |     |           |
|----|-----------|---|----------------|-----|-----------|
| 1  | 3688824M1 | ● | 704983A1(2)    | 2   | Dowel pin |
| 2  | 705020A1  | ◄ | M10x80 mm      | 2   | Screw     |
| 3  | 712165A1  | ◄ | M10x40 mm      | 10  | Screw     |
| 4  | 704847A1  |   |                | 1   | Plug      |
| 5  | 714949A1  |   |                | 1   | O ring    |
| 6  | 705002A1  | ◄ | M12x80 mm      | 6   | Screw     |
| 7  | 4219091M1 |   |                | 2   | Screw     |
| 8  | 6525643M1 |   | 130x155x12,5   | 1   | Ring      |
| 9  | 3688854M1 | ◄ | M8x17 mm       | 2   | Screw     |
|    |           | ● | 704997A1(2)    |     |           |
| 10 | 705098A1  |   |                | 1   | Cover     |
| 11 | 704799A1  |   |                | 1   | Cover     |
| 12 | 3688632M1 | ● | 3688632M2(999) | 999 | Adhesive  |
| 13 |           | ◄ | A-05 04 10     | 1   | Box       |

◄ See page - reference number

◄ Length

● Replacement

Engine

X7.6 Tier 4i (2013- ) - RPE2 - X7.660

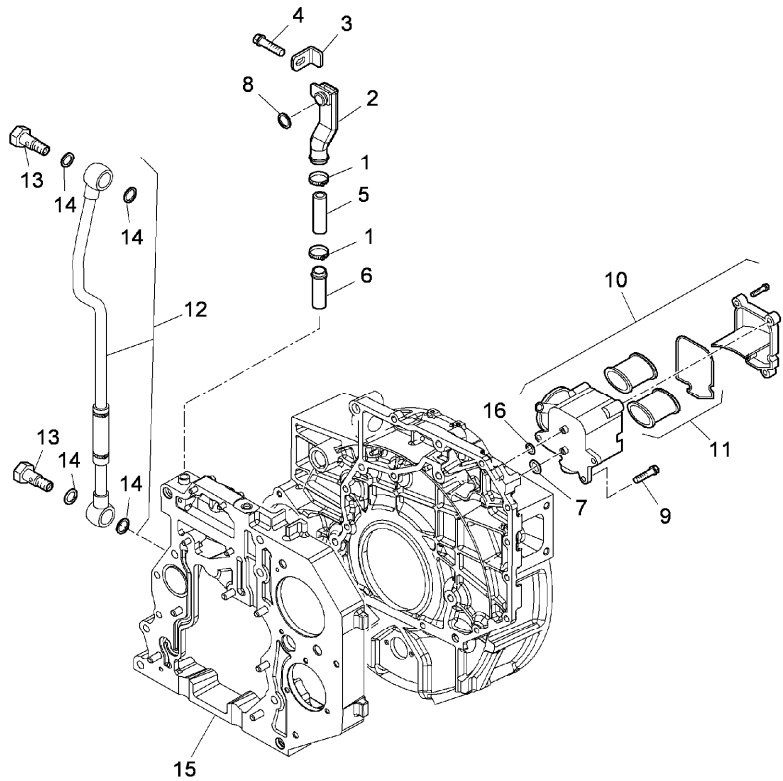
RPE2\00042132.png

A-05  
06



A0506

Engine breathers



		Inglese
1	704728A1	2 Collar
2	704935A1	1 Pipe
3	704936A1	1 Bracket
4	704937A1	1 Screw
5	704939A1	1 Sleeve
6	704940A1	1 Union
7	704960A1	1 Gasket
8	3688996M1	1 Ring
9	705014A1	3 Screw
10	3685425M91	1 Breather
11	707340A1	1 Kit
12	705029A1	1 Pipe
13	3688929M1	2 Filler
	! 12	
	● 707341A1(2)	
14	3688878M1	4 Gasket
15	◁ A-05 04 10	1 Box
16	704619A1	1 Ring

! This is a component of an assembly

◁ See page - reference number

● Replacement

Engine

X7.6 Tier 4i (2013- ) - RPE2 - X7.660

RPE2\00042605.png

A-05  
061



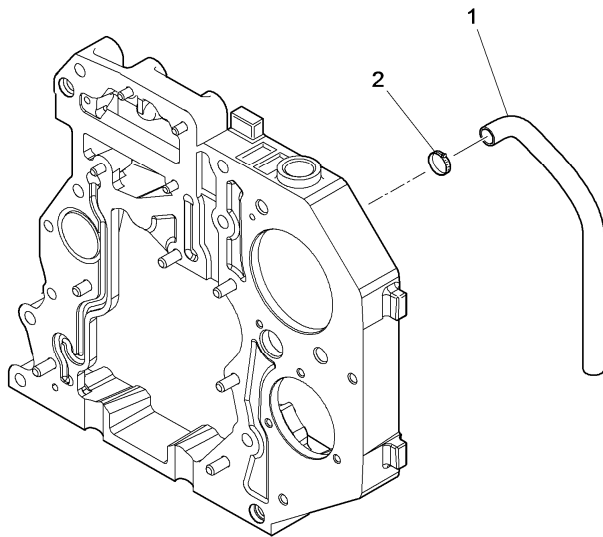
A05061

Engine breathers

Inglese

- A
- 1 714463A1
- 2 3551942M1
- A With tier 3 engine

- 1 Pipe
- 1 Clamp



Engine

X7.6 Tier 4i (2013- ) - RPE2 - X7.660

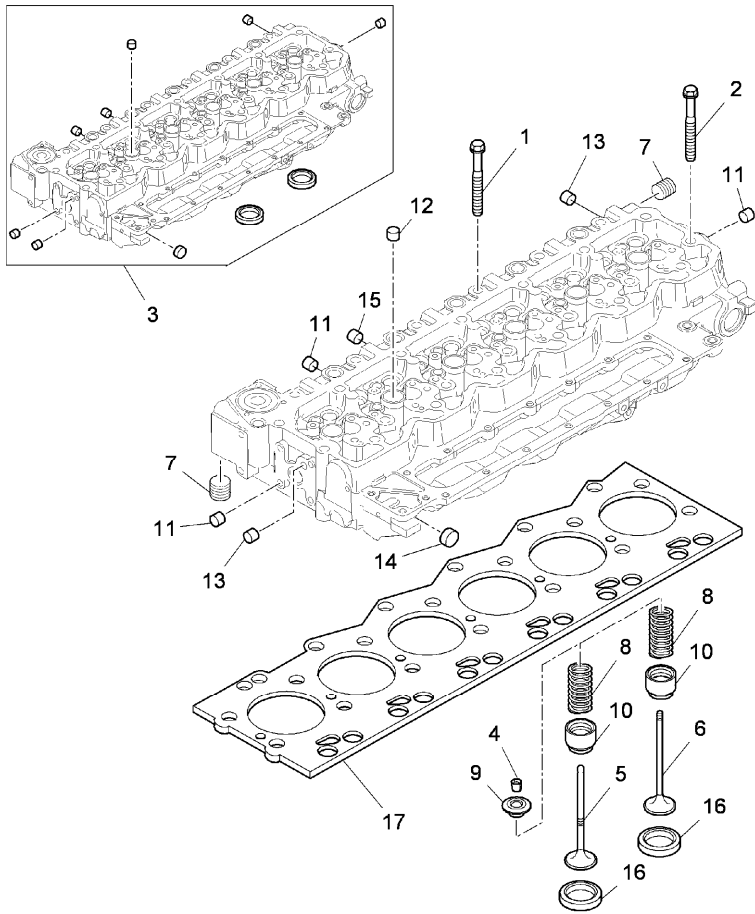
RPE2\00006692.png

A-05  
07



A0507

Head cylinder



		Inglese			
1	3688651M1	◄►	M12x130 mm	12	Screw
2	3688652M1	◄►	M12x150 mm	14	Screw
3	3688621M1			1	Cylinder head
4	3688858M1	!	3	48	Cone
5	3688761M1	!	3	12	Valve
6	3688762M1	!	3	12	Valve
7	3688683M1	!	3	1	Plug
8	6513397M1			24	Spring
9	3688766M1	!	3	24	Cup
10	3688622M1	!	3	24	Cap
		➔	63212		
10	707343A1	!	3	12	Protection cap
		➔	63211		
10	707344A1	!	3	12	Protection cap
		➔	63211		
		●	3688622M1(12)		
11	3688768M1	!	3	13	Plug
			25,74x8,13x1,27		
12	3688769M1	!	3	11	Plug
			22,5 mm x 1,27 m		
13	3688782M1	!	3	7	Plug
14	3688794M1	!	3	2	Plug
15	3688795M1	!	3	2	Plug
16	704914A1	!	3	12	Valve seat
16	704941A1	!	3	12	Valve seat

Engine

X7.6 Tier 4i (2013- ) - RPE2 - X7.660

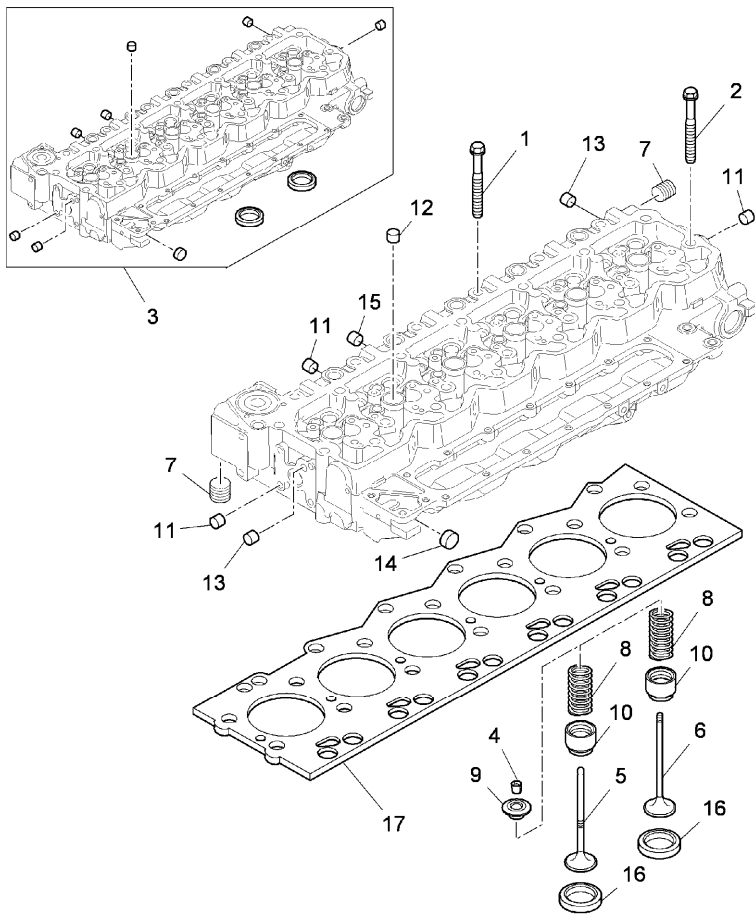
**A-05  
07**



A0507

Head cylinder

RPE2\00006692.png



Inglese

17 3688616M1 ! 3

1 Gasket

- ! This is a component of an assembly
- ➔ From serial or engine number
- ➔ Up to serial or engine number
- ↔ Length
- Replacement

Engine

X7.6 Tier 4i (2013- ) - RPE2 - X7.660

RPE2\00041517.png

A-05  
075



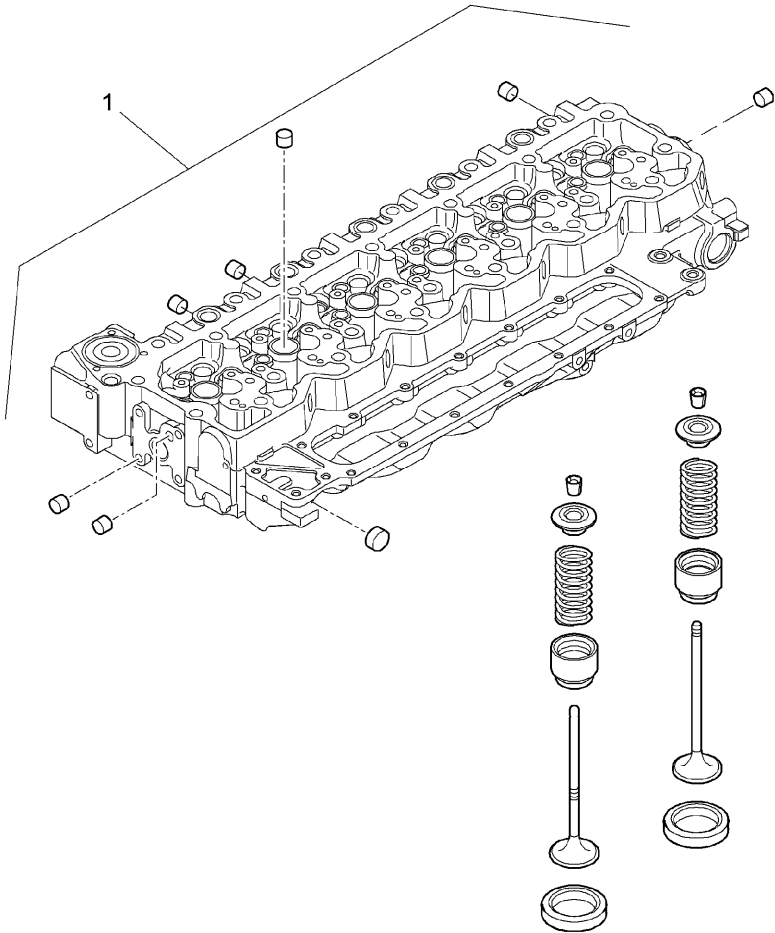
A05075

Cylinder head

1 704660A1

Inglese

1 Cylinder head



Engine

X7.6 Tier 4i (2013- ) - RPE2 - X7.660

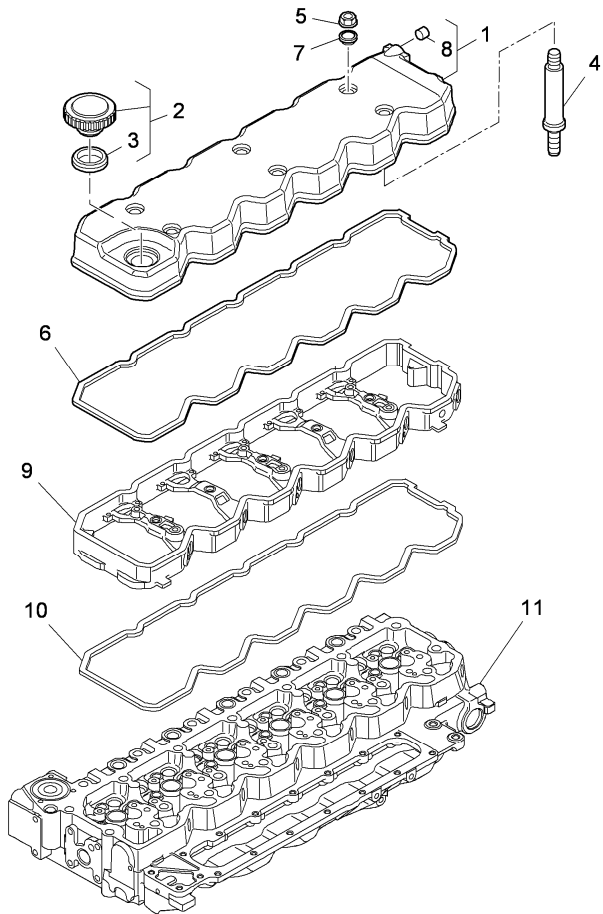
RPE2\00044817.png

A-05  
08



A0508

Cylinder head cover



- 1 3688802M1
- 2 6513399M91
- 3 3689016M1 ! 2
- 4 3689104M1
- 5 3689057M1
- 6 3689038M1
- 7 3689040M1
- 8 3688819M1 ! 1
- 9
- 10
- 11

Inglese

- 1 Coperch.
- 1 Plug
- 1 Gasket
- 4 Screw
- 6 Nut
- 1 Gasket
- 6 Spacer
- 1 Plug
- 1 Spacer
- 1 Gasket
- 1 Head

● 704956A1(1)

- ! This is a component of an assembly
- ◁ See page - reference number
- Replacement

Engine

X7.6 Tier 4i (2013- ) - RPE2 - X7.660

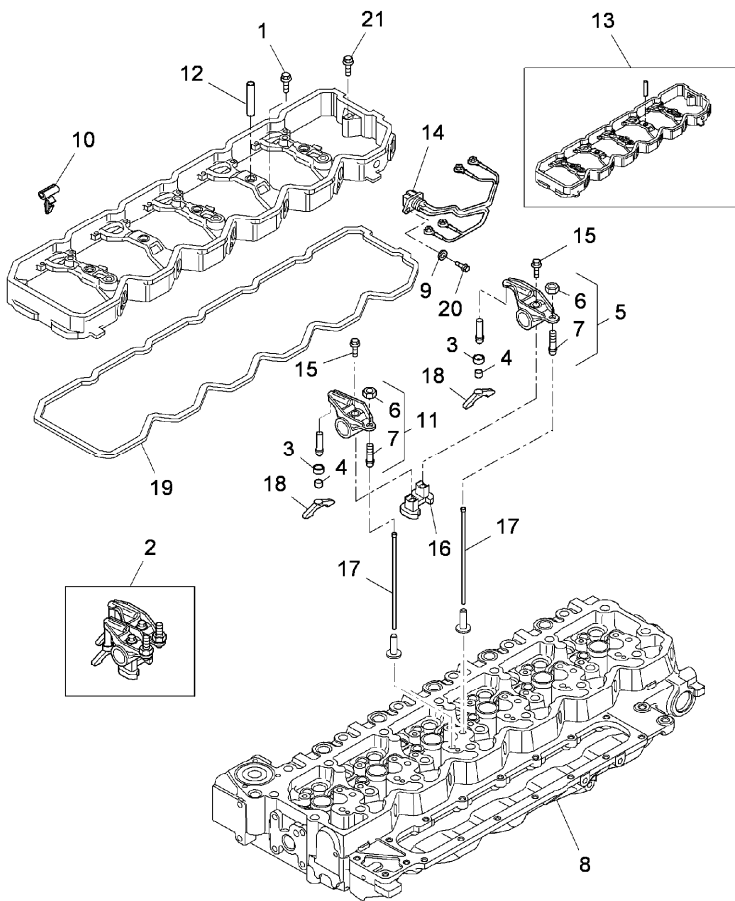
RPE2\00006694.png

A-05  
09



A0509

Rocker shaft



- |    |            |    |              |    |             |
|----|------------|----|--------------|----|-------------|
| 1  | 3688796M1  | ◄► | M8x70 mm     | 5  | Screw       |
|    |            | ●  | 704858A1(5)  |    |             |
| 2  | 6503095M2  |    |              | 6  | Shaft       |
| 3  | 6513400M1  |    |              | 12 | Cup         |
| 4  | 6513401M1  |    |              | 12 | Skate       |
| 5  | 6513402M91 |    |              | 6  | Rocker      |
| 6  | 6513403M1  |    |              | 12 | Nut         |
| 7  | 6513404M1  |    |              | 12 | Screw       |
| 8  |            | ◊  | A-05 07 3    | 1  | Head        |
| 9  | 3688950M1  | ●  | 707347A1(3)  | 3  | Lock washer |
| 10 | 3689037M1  | ●  | 705197A1(6)  | 6  | Spring      |
| 11 | 6513405M91 |    |              | 6  | Rocker      |
| 12 | 3688871M1  | ●  | 705039A1(5)  | 5  |             |
| 13 | 3688872M1  |    |              | 1  | Spacer      |
| 14 | 6525644M1  |    |              | 3  | Cable       |
| 15 | 3688609M1  | ▶  | 37131        | 12 | Screw       |
|    |            | ●  | 704622A1(12) |    |             |
| 15 | 3688860M1  | ▶  | 37130        | 12 | Screw       |
|    |            | ●  | 707345A1(12) |    |             |
| 16 | 6513406M1  |    |              | 6  | Support     |
| 17 | 3688756M1  |    |              | 12 | Rod         |
| 18 | 3689067M1  |    |              | 12 | Lever       |
| 19 | 3689039M1  |    |              | 1  | Gasket      |
| 20 | 3688945M1  | ◄► | M6x16 mm     | 3  | Screw       |
|    |            | ●  | 704572A1(3)  |    |             |

Engine

X7.6 Tier 4i (2013- ) - RPE2 - X7.660

RPE2\00006694.png

A-05  
09



A0509

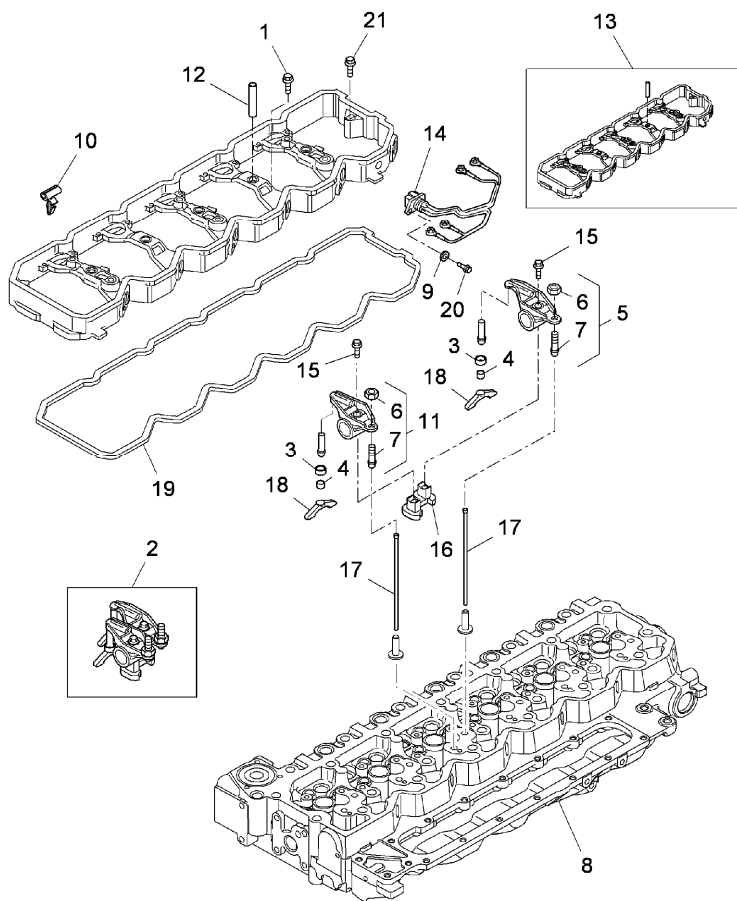
Rocker shaft

Inglese

21 3688863M1 ● 705011A1(2)

2 Screw

- ➔ From serial or engine number
- ➡ Up to serial or engine number
- 👁 See page - reference number
- ↔ Length
- Replacement





Engine

X7.6 Tier 4i (2013- ) - RPE2 - X7.660

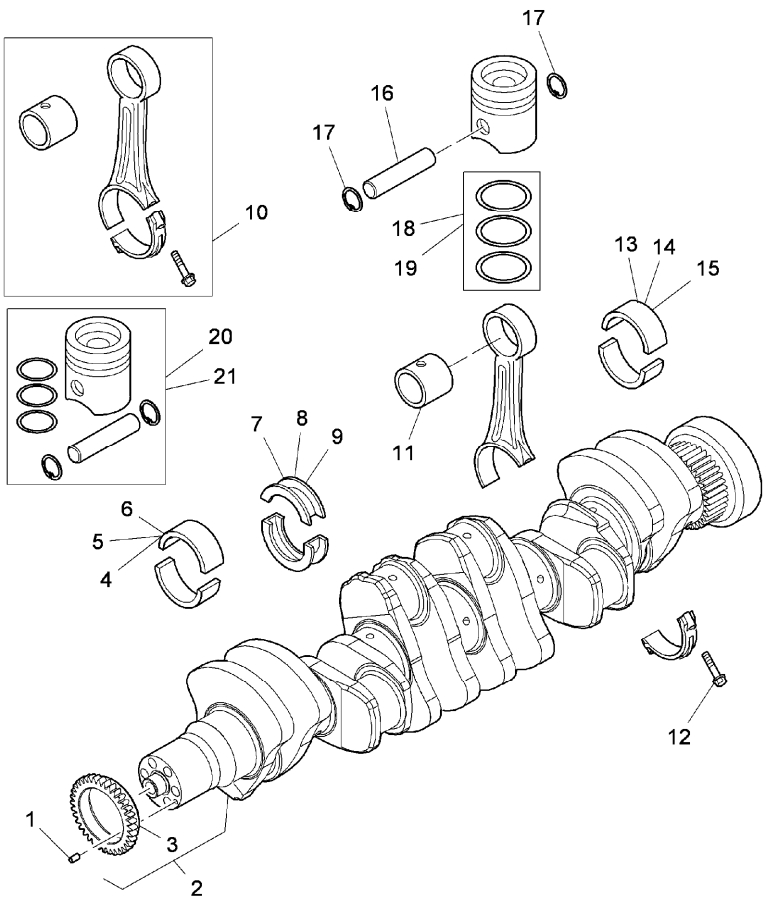
RPE2\00006698.png

A-05  
11



A0511

Crank shaft - connecting rods



		Inglese		
1	3688851M1	●	704992A1(1)	1 Dowel pin
2	705157A1	●	705157A2(1)	1 Shaft
3	704730A1	!	2	1 Gear
4	3688637M1			6 Cuscinet
5	3688638M1	✕	-0,250 mm	6 Cuscinet
6	3688639M1	✕	-0,500 mm	6 Cuscinet
7	3688634M1			1 Cuscinet
8	3688635M1	✕	-0,250 mm	1 Bearing
9	3688636M1	✕	-0,500 mm	1 Cuscinet
10	3688624M1			6 Conrod
11	3688675M1	!	10	1 Bush
12	3688623M1	!	10	12 Screw
13	3688880M1			6 Cuscinet
14	4206388M1	✕	-0,250 mm	6 Cuscinet
15	4206389M1	✕	-0,500 mm	6 Cuscinet
16	3688676M1			6 Pin
17	3689087M1			12 Ring
18	3688921M1			6 Kit
19	3688923M92	✕	+0,400 mm	6 Kit
		●	713981A1(6)	
20	6513408M91			6 Piston
21	6513409M91	✕	+0,400 mm	6 Piston
!	This is a component of an assembly			
✕	Shim			
●	Replacement			

Engine

X7.6 Tier 4i (2013- ) - RPE2 - X7.660

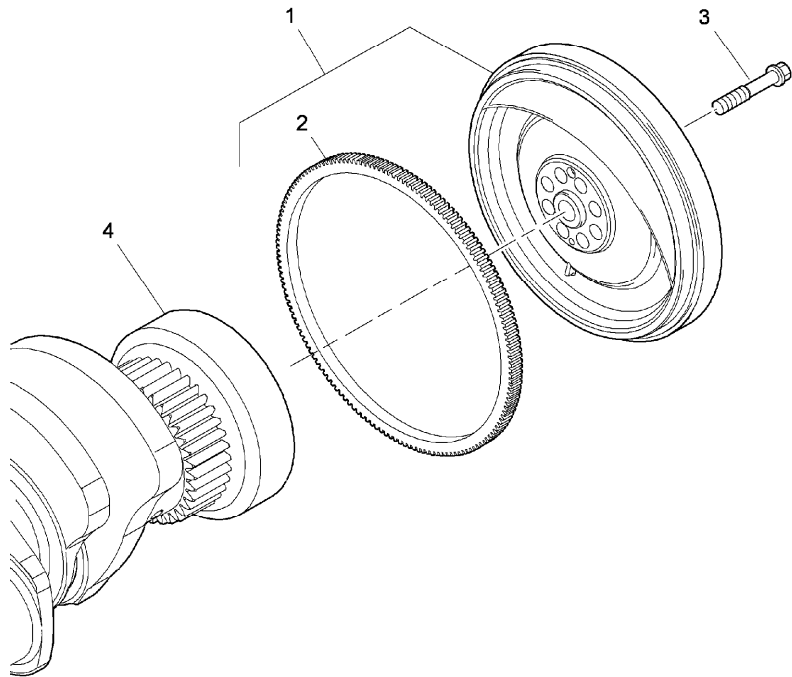
RPE2\00006699.png

A-05  
12



A0512

Engine flywhell - damper



1 705228A1

2 705069A1

3 704752A1

4

!



N.L.S.(1)

◁▷

A-05 11 2

! This is a component of an assembly

◁▷ See page - reference number

● Replacement

Inglese

1 Flywheel

1 Crownwheel

8 Screw

1 Shaft

Engine

X7.6 Tier 4i (2013- ) - RPE2 - X7.660

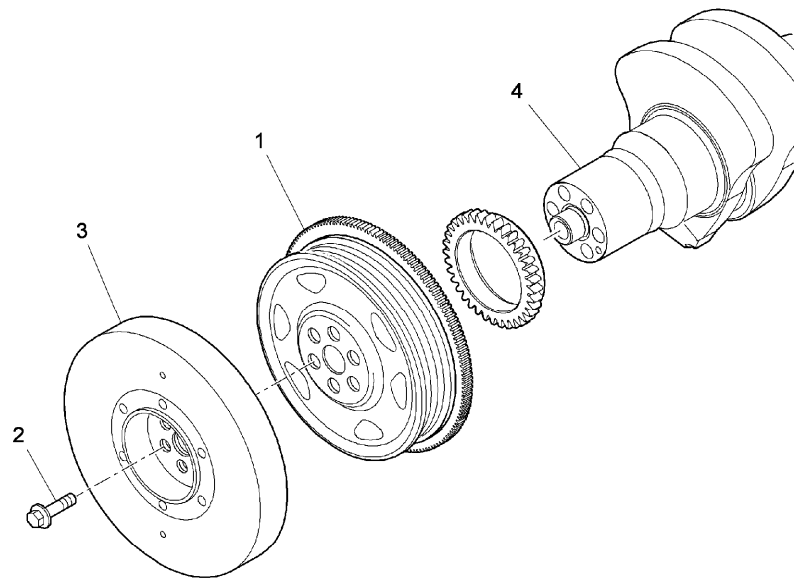
RPE2\00006700.png



**A-05  
13**



A0513

Vibration damper



- 1 704899A1
  - 2 3688681M1
  - 3 704720A1
  - 4  A-05 11 2
-  See page - reference number

**Inglese**

- 1 Pulley
- 6 Screw
- 1 Kit
- 1 Shaft

Engine

X7.6 Tier 4i (2013- ) - RPE2 - X7.660

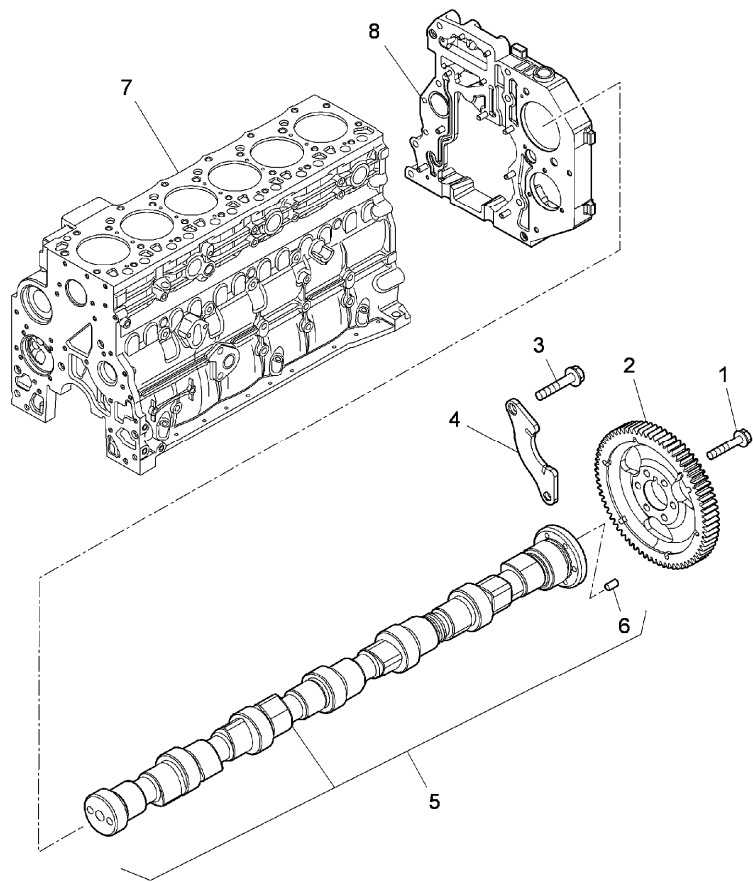
RPE2\00006701.png

A-05  
14



A0514

Timing parts



- 1 3688856M1
- 2 704887A1
- 3 3688854M1
- 4 3688818M1
- 5 6525645M1
- 6 3688857M1
- 7
- 8

- ◄► M8x17 mm
- 704997A1(2)
- 704931A1(1)
- ! 5
- 705005A1(1)
- ◄◄ A-05 02 9
- ◄◄ A-05 04 10

Inglese

- 6 Screw
- 1 Pinion
- 2 Screw
- 1 Stirrup
- 1 Shaft
- 1 Screw
- 1 Housing
- 1 Rotor drive

- ! This is a component of an assembly
- ◄◄ See page - reference number
- ◄► Length
- Replacement

Engine

X7.6 Tier 4i (2013- ) - RPE2 - X7.660

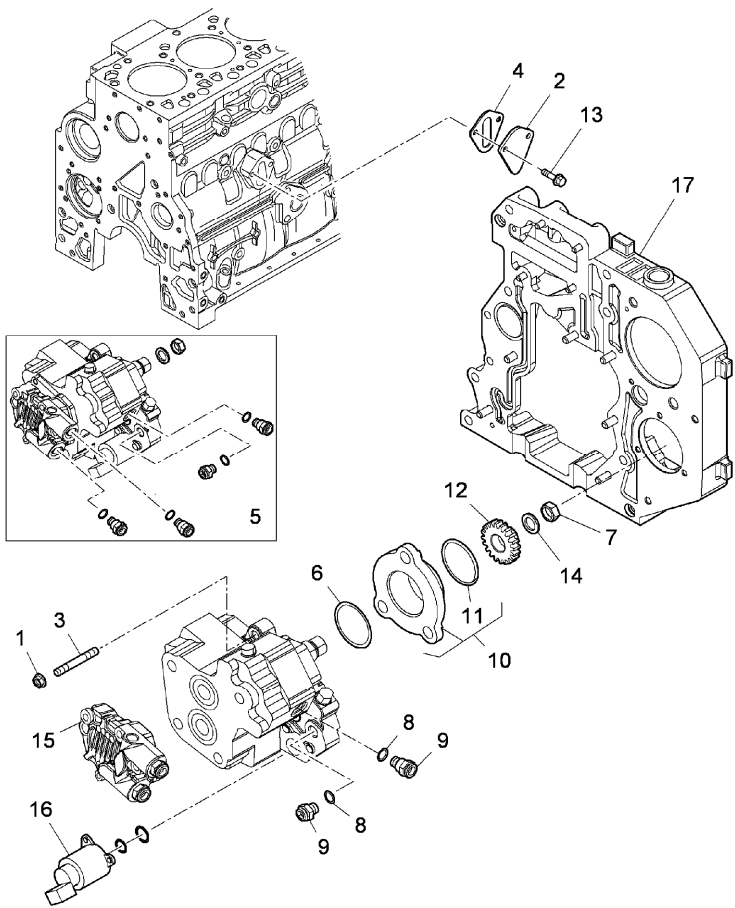
RPE2\00006702.png

A-05  
15



A0515

Fuel injection equipment



1	3688948M1				
2	3688811M1	●	704911A1(1)		
3	704575A1	◄	M8x50 mm		
4	3688642M1	●	704684A1(1)		
5	6525646M91	➔	804621		
5	704975A2	➔	804622		
6	3689012M1				
7	3688641M1	●	704682A1(1)		
8	3689015M2				
9	6501374M1				
10	705116A1				
11	704591A1	!	10		
12	704731A1				
13	3688941M1	●	710625A1(2)		
14	3688990M1	●	707359A1(1)		
15		◊	A-05 17 4		
16		◊	A-05 17 1		
17		◊	A-05 04 10		

Inglese

- 3 Nut
- 1 Coperch.
- 3 Stud
- 1 Gasket
- 1 Pump
- 1 Pump
- 1 O ring
- 1 Nut
- 2 Gasket
- 4 Union
- 1 Spacer
- 1 Gasket
- 1 Pinion
- 2 Screw
- 1 Washer
- 1 Pump
- 1 Adjuster
- 1 Rotor drive

- ! This is a component of an assembly
- ➔ From serial or engine number
- ➔ Up to serial or engine number
- ◊ See page - reference number
- ◄ Length
- Replacement

Engine

X7.6 Tier 4i (2013- ) - RPE2 - X7.660

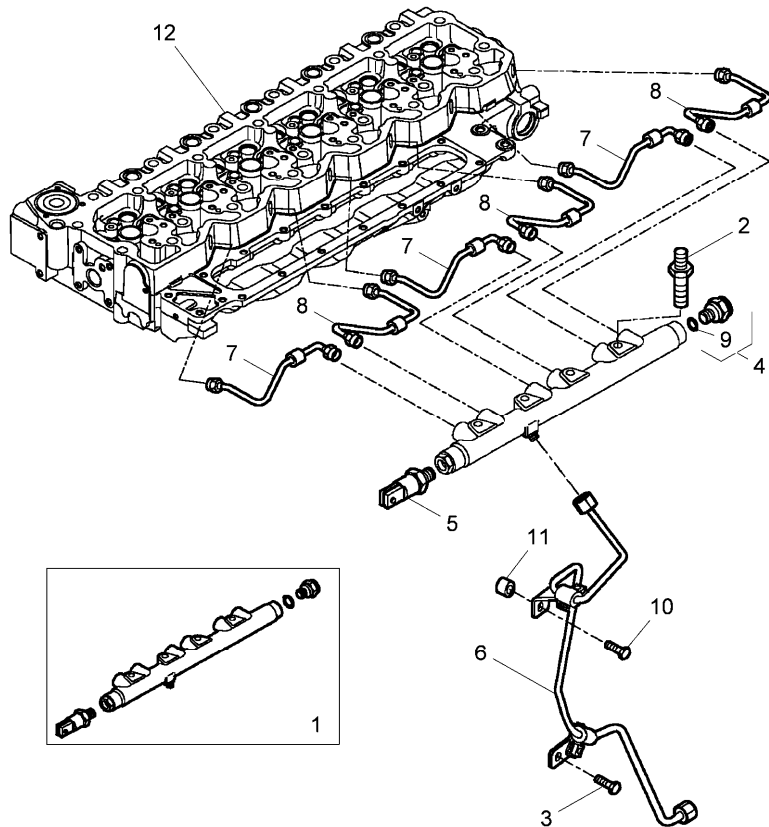
RPE2\00006703.png

**A-05  
16**



A0516

Accumulator hydraulic



- |    |           |   |             |
|----|-----------|---|-------------|
| 1  | 3689071M2 |   |             |
| 2  | 3689029M1 | ● | 705148A1(4) |
| 3  | 3688941M1 | ◄ | M8x20 mm    |
|    |           | ● | 710625A1(1) |
| 4  | 3689078M2 | ! | 1           |
| 5  | 3689100M2 | ! | 1           |
| 6  | 4218885M1 |   |             |
| 7  | 4218886M1 |   |             |
| 8  | 4218887M1 |   |             |
| 9  | 4218938M1 | ! | 4           |
| 10 | 704904A1  |   |             |
| 11 | 714693A1  |   |             |
| 12 |           | ◄ | A-05 07 3   |
- ! This is a component of an assembly  
◄ See page - reference number  
◄ Length  
● Replacement

**Inglese**

- |   |             |
|---|-------------|
| 1 | Accumulator |
| 4 | Screw       |
| 1 | Bolt        |
| 1 | Valve       |
| 1 | Sensor      |
| 1 | Pipe        |
| 3 | Pipe        |
| 3 | Pipe        |
| 1 | Ring        |
| 1 | Screw       |
| 1 | Spacer      |
| 1 | Head        |

Engine

X7.6 Tier 4i (2013- ) - RPE2 - X7.660

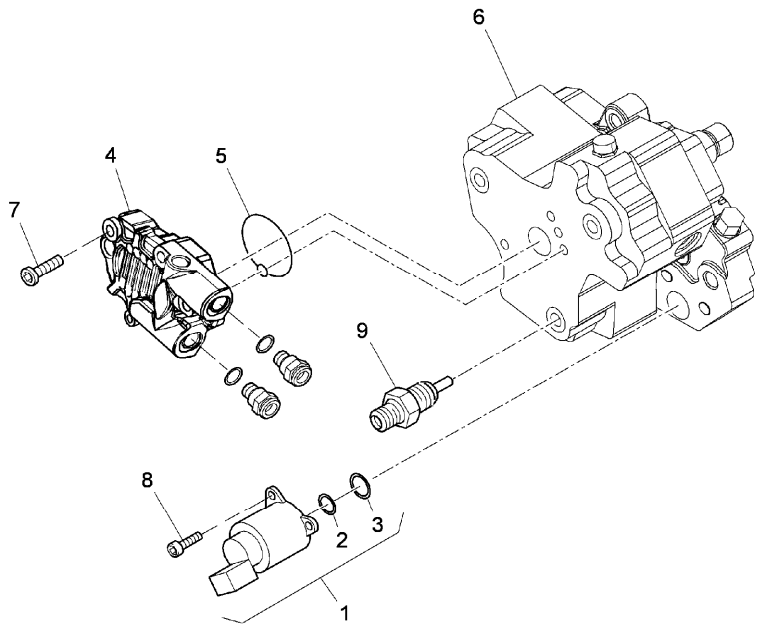
RPE2\00042140.png

A-05  
17



A0517

Injection pump (componenti)



		Inglese
1	3689009M1	1 Adjuster
2	3689008M1 ! 1	1 O ring
3	3689007M1 ! 1	1 O ring
4	3689010M1 ● 3689010M2(1)	1 Pump
5	6501370M1	1 Ring
6	⦿ A-05 15 5	1 Pump
7	3689112M1 ● 6525662M1(4)	4 Screw
8	3689128M1 ● 6525661M1(3)	3 Screw
9	3689129M1	1 Valve

- ! This is a component of an assembly
- ⦿ See page - reference number
- Replacement

Engine

X7.6 Tier 4i (2013- ) - RPE2 - X7.660

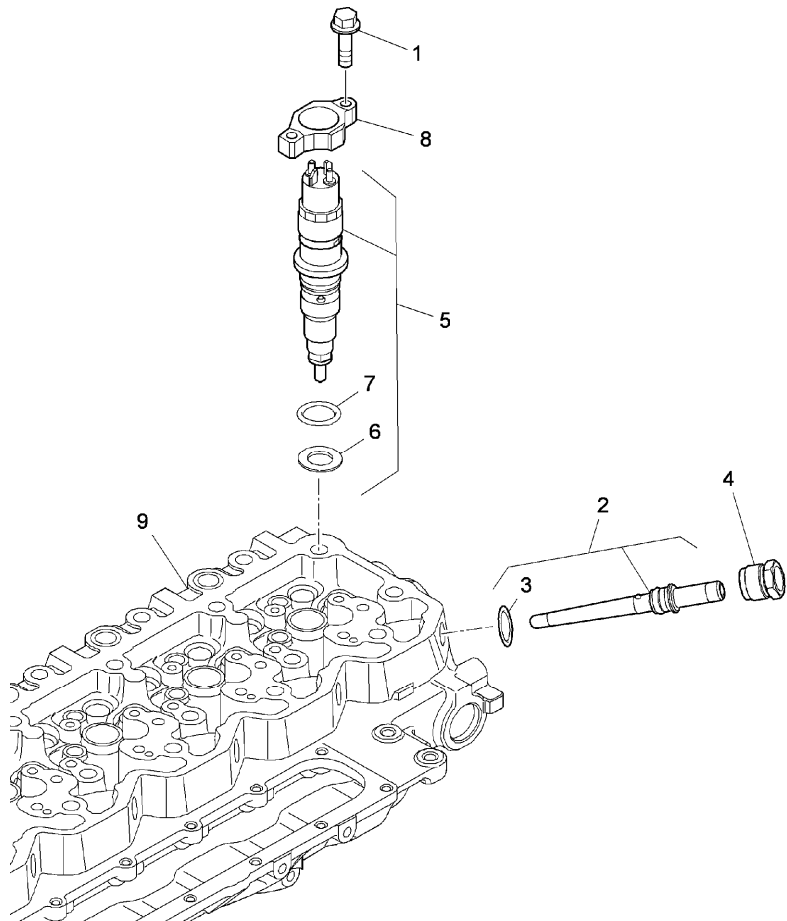
RPE2\00006706.png

A-05  
18



A0518

Nozzles



- 1 3688798M1
- 2 3689089M1
- 3 3688649M1 ! 2
- 4 3688688M1
- 5 3689103M1
- 6 3688876M1 ! 5
- 7 3688648M1 ! 5
- 8 3689084M1
- 9 <img alt="eye icon" data-bbox="548 501 563 516"/> A-05 07 3

Inglese

- 12 Screw
- 6 Pipe
- 1 Ring
- 6 Nut
- 6 Nozzle
- 1 Washer,locking
- 1 Ring
- 1 Stirrup
- 1 Head

! This is a component of an assembly  
<img alt="eye icon" data-bbox="457 546 472 561"/> See page - reference number

Engine

X7.6 Tier 4i (2013- ) - RPE2 - X7.660

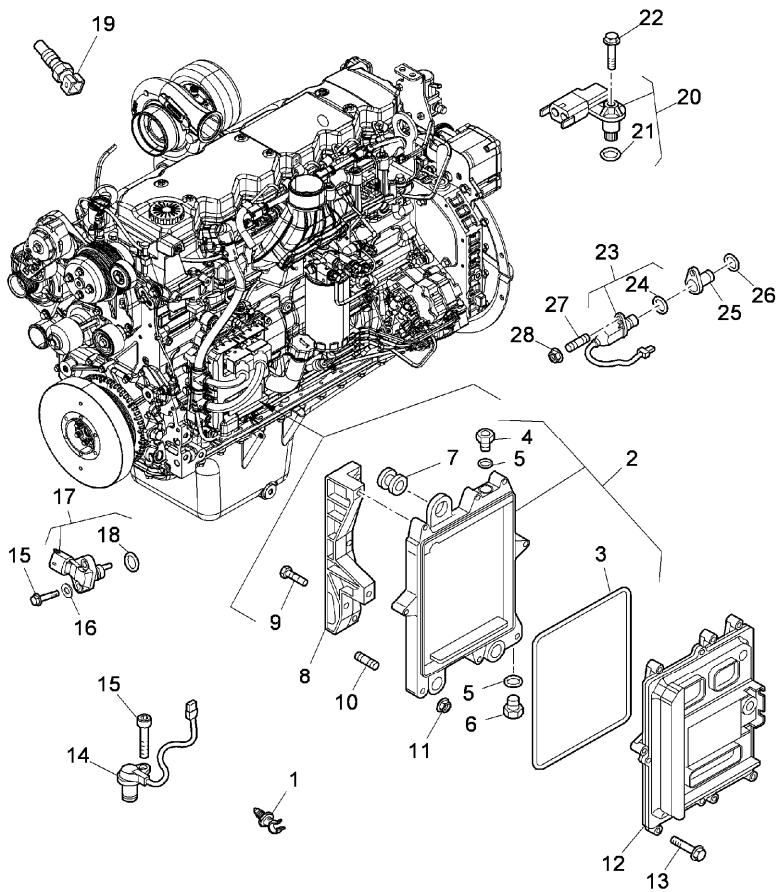
**A-05  
19**



A0519

Electronic control unit

RPE2\00042142.png



		Inglese
1	6513422M1	2
2	6513421M91	1 Support
3	3689053M1 ! 2	1 Gasket
4	704894A1 ! 2	1 Coupler
5	3689015M2 ! 2	2 Gasket
6	3688650M1 ! 2	1 Union
7	3689019M1 ! 2	3 Spacer
8	704945A1	1 Stirrup
9	6525648M1	3 Screw
10	714709A1	1 Stud
11	714711A1	1 Nut
12	6525649M1 ● N.L.S.(1)	1 Electronic unit control
13	3688931M1 ◀ M6x30 mm	8 Screw
13	705003A1	3 Screw
14	704677A1 A	1 Sensor
15	3688866M1 ● 705021A1(3)	3 Screw
16	705023A1	2 Washer
17	3688640M1 ● 3688640M2(1)	1 Sensor
	B	
	E	
18	3688797M1 ! 17	1 O ring
19	3688813M1 C	1 Sender
20	6513418M91 D	1 Sensor
	F	



**Suggest:**

**For more complete manuals. Please go to the home page.**

**<https://www.ebooklibonline.com>**

**If the above button click is invalid. Please download this document first, and then click the above link to download the complete manual.**

**Thank you so much for reading**

Engine

X7.6 Tier 4i (2013- ) - RPE2 - X7.660

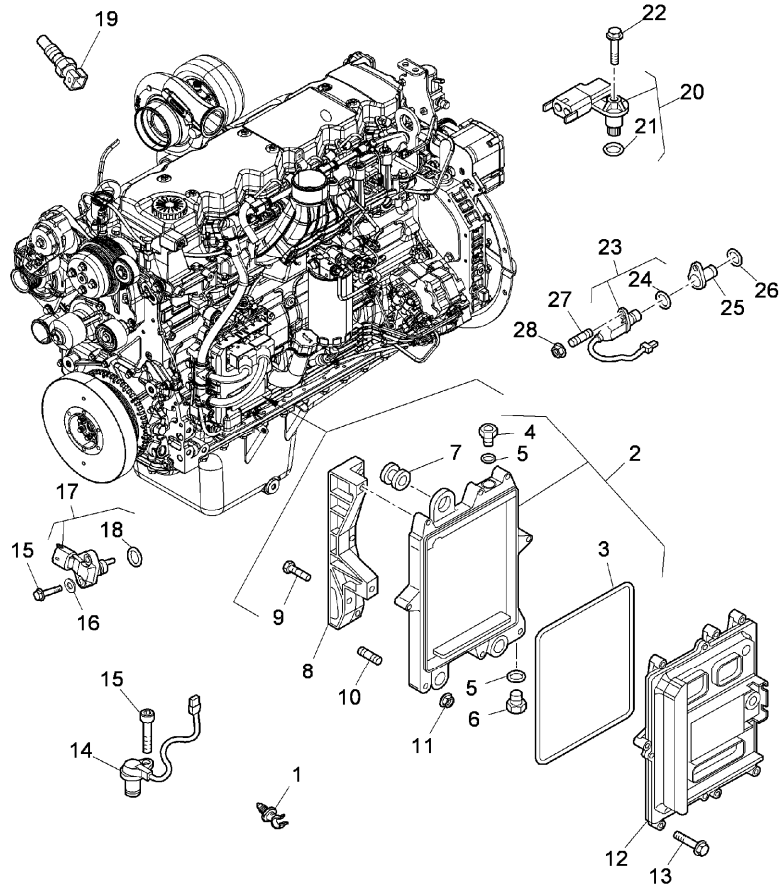
RPE2\00042142.png

**A-05  
19**



A0519

Electronic control unit



- 21 4206392M1 ! 20
- 22 3688801M1
- 23 707382A A
- 24 3688993M1 ! 23
- 25 6513423M1
- 26 6513424M1
- 27 6513419M1
- 28 714708A1

**Inglese**

- 1 O ring
- 1 Screw
- 1 Sensor
- 1 O ring
- 1 Union
- 1 Ring
- 1 Screw
- 1 Nut

- ! This is a component of an assembly
- ◄ Length
- Replacement
- A Speed
- B Oil pressure
- C Water temperature
- D Air pressure
- E Oil temperature
- F Temperature

Engine

X7.6 Tier 4i (2013- ) - RPE2 - X7.660

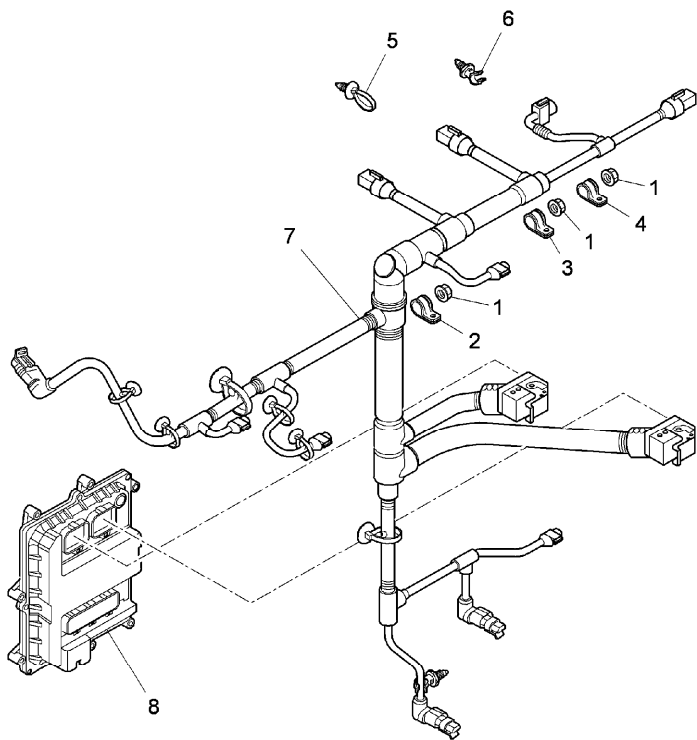
RPE2\00006710.png

A-05  
20



A0520

Engine wiring



- 1 3688947M1
- 2 714911A1
- 3 3689001M1 ● 704593A1(1)
- 4 704594A1
- 5 707369A1
- 6 705180A1
- 7 714718A1
- 8 ◁ A-05 19 12

- ◁ See page - reference number
- Replacement

Inglese

- 3 Nut
- 1 Stirrup
- 1 Stirrup
- 1 Stirrup
- 1 Clip
- 1 Clip
- 1 Harness
- 1 Electronic unit control

**<https://www.ebooklibonline.com>**

Hello dear friend!

Thank you very much for reading.

Enter the link into your browser.

The full manual is available for immediate download.

**<https://www.ebooklibonline.com>**