

Page Number	Page Title	Page Reference
01-000-TOC	ENGINE, FUEL AND EXHAUST SYSTEM	01-000-TOC
02-000-TOC	AXLES	02-000-TOC
03-000-TOC	STEERING SYSTEM	03-000-TOC
04-000-TOC	DRIVE TRAIN SYSTEM	04-000-TOC
05-000-TOC	BRAKE SYSTEM	05-000-TOC
06-000-TOC	COMPRESSED AIR SYSTEM	06-000-TOC
07-000-TOC	HYDRAULIC SYSTEM	07-000-TOC
08-000-TOC	ELECTRICAL SYSTEM	08-000-TOC
09-000-TOC	CAB	09-000-TOC
10-000-TOC	CHASSIS	10-000-TOC
11-000-TOC	DECALS	11-000-TOC
12-000-TOC	WHEELS	12-000-TOC
13-000-TOC	IMPLEMENT DRIVE SYSTEM	13-000-TOC
14-000-TOC	IMPLEMENT LIFT SYSTEM REAR	14-000-TOC
15-000-TOC	LINKAGE	15-000-TOC
16-000-TOC	FRONT/REAR LOADERS	16-000-TOC
17-000-TOC	ACCESSORIES	17-000-TOC
18-000-TOC	GENERAL INFORMATION	18-000-TOC

ENGINE, FUEL AND EXHAUST SYSTEM

Page01-000-TOC

Page Number	Page Title	Page Reference
01-0001	ENGINE & EQUIPMENT - AGCO POWER SISU W/ E3 TECHNOLOGY	WA061070-1
01-0002	ENGINE & EQUIPMENT - ENGINE : TIER 2	WA061072-1
01-0003	CYLINDER-BLOCK	WH011023-1
01-0004	TIMING GEAR HOUSING	WH201016-1
01-0005	FLYWHEEL & FLYWHEEL HOUSING	1977396
01-0006	CRANKSHAFT, PISTONS & PISTON ROD	WH021027-1
01-0007	CAMSHAFT & VALVE MECHANISM	WH221006-1
01-0008	CYLINDER HEAD	WH031025-1
01-0009	CYLINDER HEAD COVER - AGCO POWER SISU W/ E3 TECHNOLOGY	WH231015-1
01-0010	CYLINDER HEAD COVER - TIER2 ENGINE	WH231016-1
01-0011	OIL SUMP	WH111011-1
01-0012	OIL COOLER & FILTER	WH261010-1
01-0013	ENGINE BREATHER - AGCO POWER SISU W/ E3 TECHNOLOGY	WH311002-1
01-0014	WATER PUMP	WH281021-1
01-0015	INJECTION SYSTEM	WH091032-1
01-0016	LOW PRESSURE FUEL SYSTEM	WH141039-1
01-0017	INTAKE & EXHAUST MANIFOLD	WH181025-1
01-0018	TURBOCHARGER - PIPES	WH241014-1
01-0019	ELECTRONIC ENGINE MANAGEMENT	WH401018-1
01-0020	ENGINE PARTS - AGCO POWER SISU W/ E3 TECHNOLOGY	WH431002-1
01-0021	ENGINE REPAIR KITS - PISTON- CYLINDER HEAD WITH VALVES	WH301007-1
01-0022	ENGINE GASKETS SETS	WH151010-1
01-0023	ALTERNATOR & BRACKET - ENGINE WITHOUT AIR COMPRESSOR - 1 ALTERNATOR	WA101030-1
01-0024	ALTERNATOR & BRACKET - ENGINE WITHOUT AIR COMPRESSOR - 2 ALTERNATORS	WA101031-1
01-0025	ALTERNATOR & BRACKET - ENGINE WITH AIR COMPRESSOR - 2 ALTERNATORS	WA101032-1
01-0026	HEATER ENGINE BLOCK - 220 V	WC381031-1
01-0027	HEATER ENGINE BLOCK - 110 V	WC381032-1
01-0028	CAB HEATING SYSTEM - ENGINE PART	WC281034-1
01-0029	CAB HEATING SYSTEM - ENGINE PART - TIER2 ENGINE	WC281040-1
01-0030	FUEL TANK & ATTACHMENTS	WC021064-1
01-0031	FUEL TANK & ATTACHMENTS	WC021066-1
01-0032	FUEL TANK & ATTACHMENTS - TIER2 ENGINE	WC021070-1
01-0033	FUEL TANK & ATTACHMENTS - GUARDS - JAPAN ONLY	WC021083-1
01-0034	FUEL TANK (COMPONENTS)	WC021063-1
01-0035	FUEL TANK (COMPONENTS) - TIER2 ENGINE	WC021071-1
01-0036	DEF TANK - (COMPONENTS)	WC051003-1
01-0037	FUEL TANK (COMPONENTS) - TIER2 ENGINE	WC051005-1
01-0038	ADDITIONAL FUEL TANK - (COMPONENTS)	WC041016-1
01-0039	FUEL TANK - BREATHER LINE	WC641036-1
01-0040	FUEL SYSTEM - TIER2 ENGINE	WC641045-1
01-0041	FUEL SYSTEM	WC641026-1
01-0042	FUEL SYSTEM - FUEL FILTER - WITHOUT FRONT LOADER	WC641027-1
01-0043	FUEL SYSTEM - FUEL FILTER - WITHOUT FRONT LOADER	WC641040-1
01-0044	FUEL SYSTEM - FUEL FILTER - WITH FRONT LOADER	WC641029-1
01-0045	COOLING SYSTEM - AIR CONDITIONED INSTALLATION	WC081044-1
01-0046	AIR CONDITIONER COMPRESSOR - (COMPONENTS)	WC491003-1
01-0047	COOLING SYSTEM - ENGINE - AGCO POWER SISU W/ E3 TECHNOLOGY	WC231080-1
01-0048	COOLING SYSTEM - ENGINE - TIER2 ENGINE	WC231087-1
01-0049	COOLING SYSTEM - ENGINE	WC231081-1
01-0050	COOLING SYSTEM - (COMPONENTS) - FROM SERIAL OR ENGINE NUMBER D122068	WC231112-1
01-0051	COOLING SYSTEM - ENGINE	WC231083-1
01-0052	OIL RECOVERY	WP411041-1
01-0053	OIL RECOVERY - TIER2 ENGINE	WP411047-1
01-0054	AIR FILTER - DRY - DUAL ELEMENT	WC201048-1
01-0055	VERTICAL EXHAUST ON THE SIDE	WC111053-1
01-0056	VERTICAL EXHAUST ON THE SIDE - (COMPONENTS)	WC111054-1
01-0057	VERTICAL EXHAUST ON THE SIDE - TIER2 ENGINE	WC111057-1
01-0058	EXHAUST - VERTICAL - (COMPONENTS) - TIER2 ENGINE	WC111058-1
01-0059	POLLUTION CONTROL	WC131003-1
01-0060	POLLUTION CONTROL	WC131004-1
01-0061	THROTTLE CONTROLS	WC141015-1

<https://www.ebooklibonline.com>

Hello dear friend!

Thank you very much for reading.

Enter the link into your browser.

The full manual is available for immediate download.

<https://www.ebooklibonline.com>

Item	Part Number	Qty	Description Comments	Technical Specification
1	V834876769	1	ENGINE	66 AWI
	V834876768	1	ENGINE	66 AWI
	864879542X	1	SHORT BLOCK ENGINE [B]	66 AWI
	V834877264	1	ENGINE	66 AWI
	V834877658	1	ENGINE	66 AWI
	V834877465	1	ENGINE	66 AWI
2	3786092M1	1	NUT METRIC	M10
3	3786093M1	1	PROTECTION	
4	3823621M96	1	STARTERMOTOR [A]	
5	3905503M92	1	KIT, SOLENOID (4)	
6	339228X1	4	HEXAGONAL HEAD BOLT	M8 X 12 (1.25) ISO 8.8 ZN
7	390972X1	2	FLAT WASHER	M8 ZN
8	4353642M3	1	COWL	
9	4350490M3	1	COWL	
10	339402X1	6	HEX NUT	M10 (1.5) ISO 8 ZN
11	385362X1	6	FLAT WASHER	?10-20 X 3 MM ZN
12	339402X1	3	HEX NUT	M10 (1.5) ISO 8 ZN
13	3008483X1	3	STUD BOLT	M10X35-ISO 8.8-ZN
14	4350489M2	1	COWL UP TO SERIAL OR ENGINE NUMBER E107036	
15	4356509M3	1	LEFT HAND COWL	
16	4356510M3	1	RIGHT HAND COWL	
17	4377131M1	1	FAN	
18	4353860M1	1	CLUTCH	
19	4353729M3	1	SUPPORT	
20	390972X1	2	FLAT WASHER	M8 ZN
21	339124X1	2	HEXAGONAL HEAD BOLT	M8 X 16 (1.25) ISO 8.8 ZN
22	4374489M1	1	HARNESS	
23	3788193M1	1	LABEL UP TO SERIAL OR ENGINE NUMBER D098076	
24	3016173X1	1	HEX SOCKET HEAD CAPSCREW UP TO MACHINE S/N E023038	M8 X 115 ISO 8.8 ZN
25	4375412M1	1	SPACER UP TO MACHINE S/N E023038	9-18 X 92 MM
26	3016174X1	2	HEX SOCKET HEAD CAPSCREW	M8 X 35 ISO 8.8 ZN
27	4376823M1	2	SUPPORT	
28	339169X1	2	HEX NUT	M8 (1.25) ISO 8 ZN
29	339761X1	2	HEXAGONAL HEAD BOLT	M8 X 25 (1.25) ISO 8.8 ZN
30	3016171X1	1	HEX SOCKET HEAD CAPSCREW	M8 X 25 ISO 8.8 ZN
31	3010568X1	1	HEX SOCKET HEAD CAPSCREW	M10 X 16 ISO 10.9 ZN
32	4354498M4	1	FLANGE BRACKET	
33	4377710M4	1	TUBE FROM MACHINE S/N C334031	
34	3011409X1	1	O-RING FROM MACHINE S/N C334031	?34,52 X 3,53 MM DIDC 70 PL
35	339024X1	2	FLAT WASHER	?8,4-17 X 2 MM ZN
36	339761X1	1	HEXAGONAL HEAD BOLT FROM MACHINE S/N E023039 UP TO MACHINE S/N 09-FEB-2014	M8 X 25 (1.25) ISO 8.8 ZN
	3016171X1	1	HEX SOCKET HEAD CAPSCREW FROM MACHINE S/N 10-FEB-2014	M8 X 25 ISO 8.8 ZN
37	4388471M1	1	SPACER FROM MACHINE S/N E023039	L = 92 MM
38	3009192X1	6	HEXAGON FLANGE BOLT	M8 X 16 (1.25) ISO 10.9 ZN
39	4381471M1	1	COWL FROM SERIAL OR ENGINE NUMBER E107037	

Massey Ferguson

7619 TRACTOR (DYNA 6) (B346025 - F174044)

3906347

ENGINE & EQUIPMENT

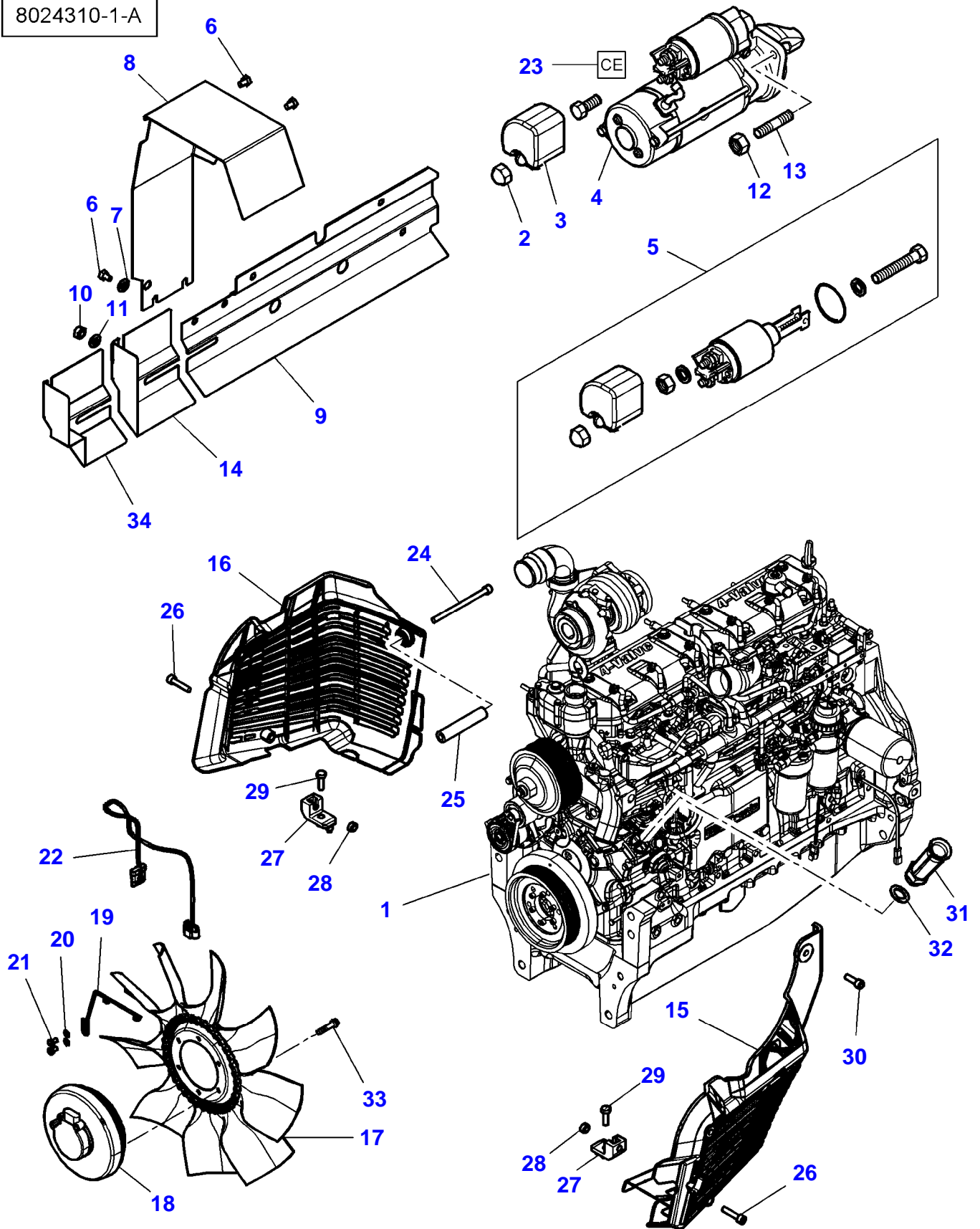
Page01-0001

AGCO POWER SISU W/ E3 TECHNOLOGY

Item	Part Number	Qty	Description	Technical Specification
			Comments	
			[A] THE APPROPRIATE SAFETY DECALS MUST BE ORDERED AND FITTED TO THIS PART	
			[B] NOT ILLUSTRATED	

MF 7619 TRACTOR (DYNA 6) (B346025 - F174044)
8024310-1-A

8024310-1-A

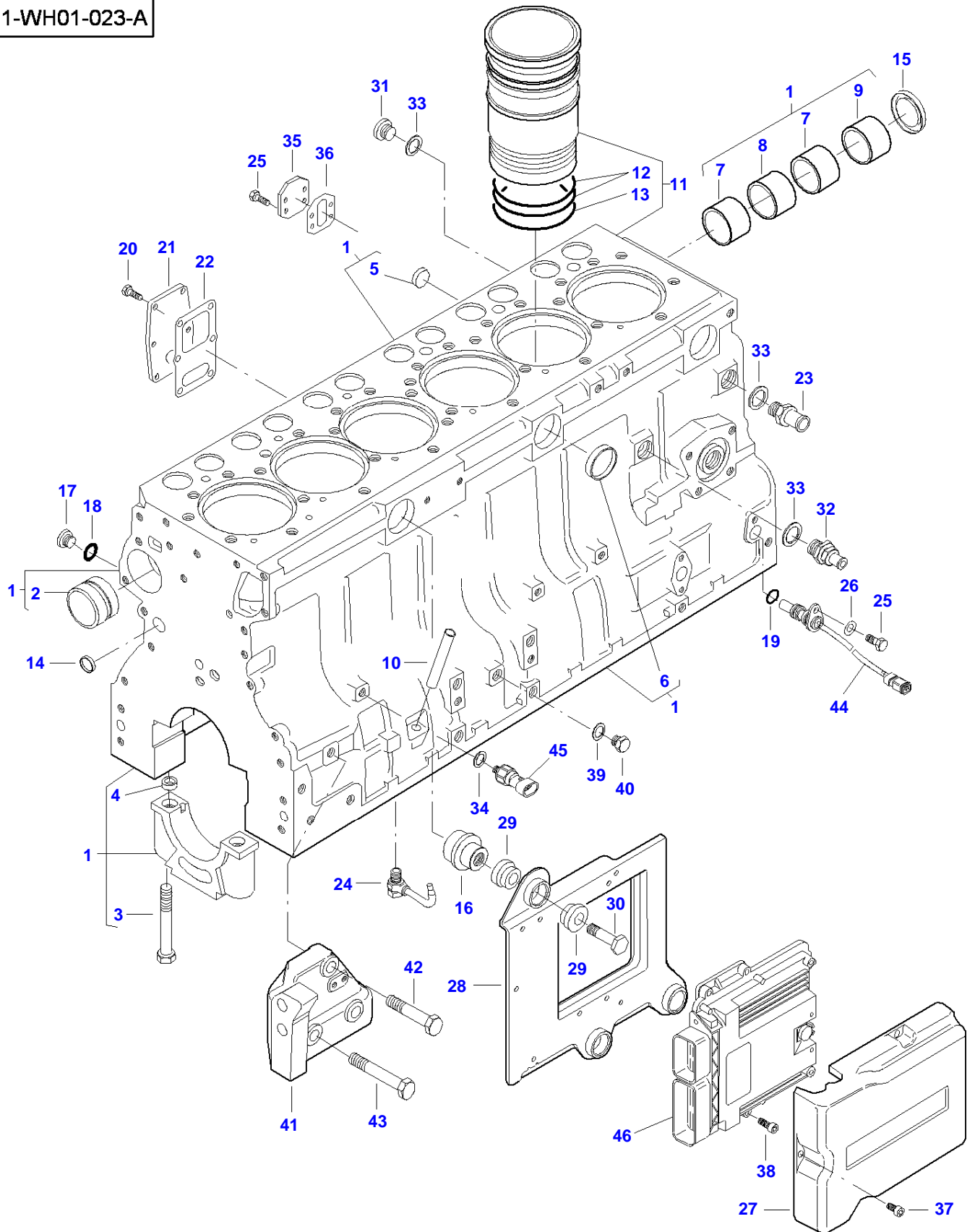


Item	Part Number	Qty	Description Comments	Technical Specification
1	864879542X	1	SHORT BLOCK ENGINE [B]	66 AWI
	V834877310	1	ENGINE	66 WI
2	3786092M1	1	NUT METRIC	M10
3	3786093M1	1	PROTECTION	
4	3823621M96	1	STARTERMOTOR [A]	
5	3905503M92	1	KIT, SOLENOID (4)	
6	339228X1	4	HEXAGONAL HEAD BOLT	M8 X 12 (1.25) ISO 8.8 ZN
7	390972X1	2	FLAT WASHER	M8 ZN
8	4353642M3	1	COWL	
9	4350490M3	1	COWL	
10	339402X1	6	HEX NUT	M10 (1.5) ISO 8 ZN
11	385362X1	6	FLAT WASHER	?10-20 X 3 MM ZN
12	339402X1	3	HEX NUT	M10 (1.5) ISO 8 ZN
13	3008483X1	3	STUD BOLT	M10X35-ISO 8.8-ZN
14	4350489M2	1	COWL UP TO SERIAL OR ENGINE NUMBER E107036	
15	4356509M3	1	LEFT HAND COWL	
16	4356510M3	1	RIGHT HAND COWL	
17	4377131M1	1	FAN	
18	4353860M1	1	CLUTCH	
19	4353729M3	1	SUPPORT	
20	390972X1	2	FLAT WASHER	M8 ZN
21	339124X1	2	HEXAGONAL HEAD BOLT	M8 X 16 (1.25) ISO 8.8 ZN
22	4374489M1	1	HARNESS	
23	3788193M1	1	LABEL UP TO SERIAL OR ENGINE NUMBER D098076	
24	3016173X1	1	HEX SOCKET HEAD CAPSCREW	M8 X 115 ISO 8.8 ZN
25	4375412M1	1	SPACER	9-18 X 92 MM
26	3016174X1	2	HEX SOCKET HEAD CAPSCREW	M8 X 35 ISO 8.8 ZN
27	4376823M1	2	SUPPORT	
28	339169X1	2	HEX NUT	M8 (1.25) ISO 8 ZN
29	339761X1	2	HEXAGONAL HEAD BOLT	M8 X 25 (1.25) ISO 8.8 ZN
30	3016171X1	1	HEX SOCKET HEAD CAPSCREW	M8 X 25 ISO 8.8 ZN
31	4377710M4	1	TUBE FROM SERIAL OR ENGINE NUMBER C334031	
32	3011409X1	1	O-RING	?34,52 X 3,53 MM DIDC 70 PL
33	3009192X1	6	HEXAGON FLANGE BOLT	M8 X 16 (1.25) ISO 10.9 ZN
34	4381471M1	1	COWL FROM SERIAL OR ENGINE NUMBER E107037	

[A] THE APPROPRIATE SAFETY DECALS MUST BE ORDERED AND FITTED TO THIS PART
[B] NOT ILLUSTRATED

MF 7619 TRACTOR (DYNA 6) (B346025 - F174044)
1-WH01-023-A

1-WH01-023-A

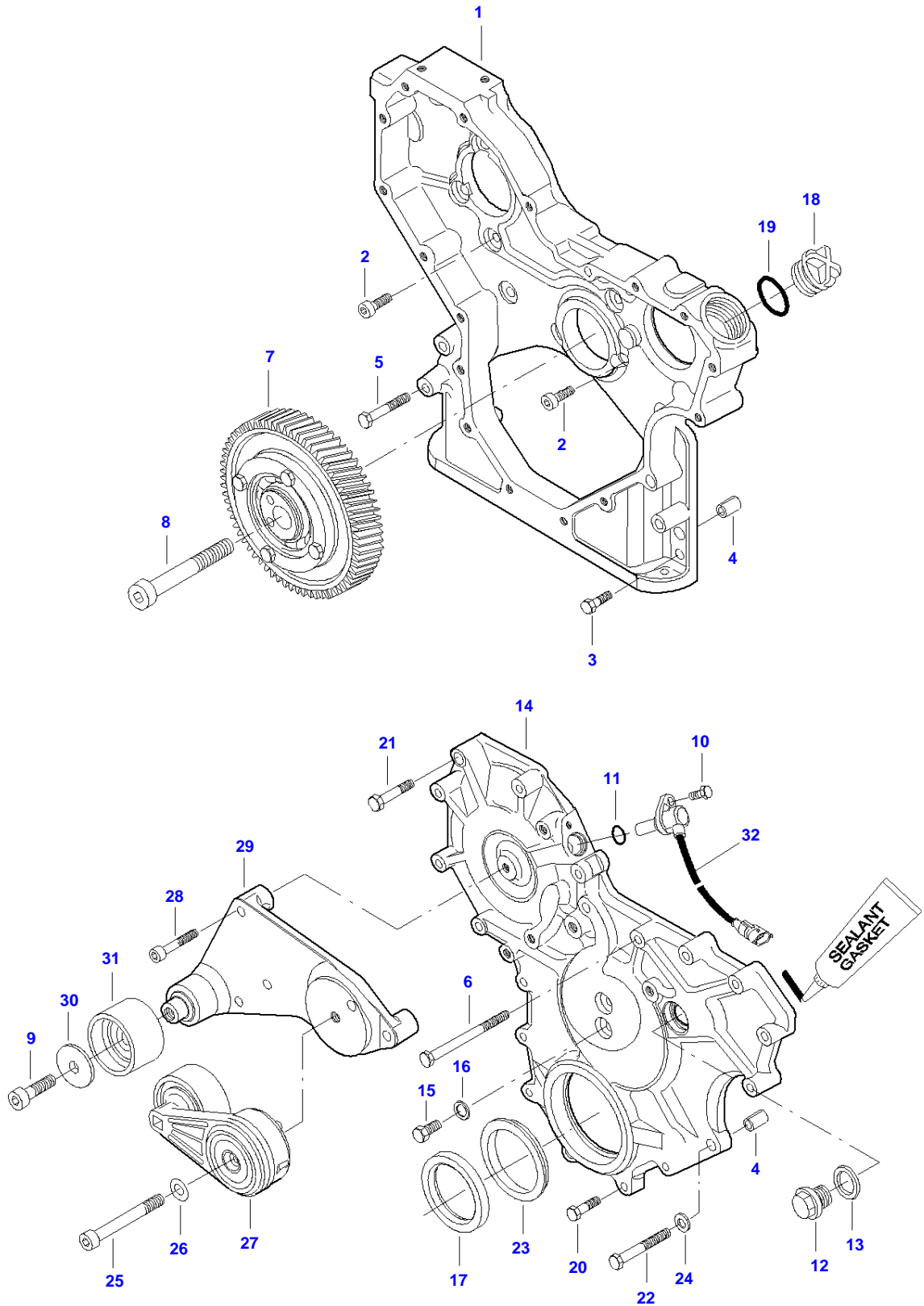


Item	Part Number	Qty	Description Comments
1	V837070103	1	CYLINDER BLOCK
2	V836866069	1	CAMSHAFT BEARING BUSHING (1)
	V836866036	X	CAMSHAFT BEARING BUSHING THICKNESS + 0.4 MM
3	V835329030	14	HEX CAP SCREW (1)
4	V836214478	24	GUIDE SLEEVE (1)
5	V640016018	1	PLUG (1)
6	V640016040	2	PLUG (1)
7	V836852460	2	CAMSHAFT BEARING BUSHING (1)
8	V836852459	1	CAMSHAFT BEARING BUSHING (1)
9	V836852461	1	CAMSHAFT BEARING BUSHING (1)
10	V836666910	1	OIL DIPSTICK GUIDE PIPE
11	V836673191	6	LINER
	V836647933	X	LINER THICKNESS 9.08 MM
	V836647934	X	LINER THICKNESS 9.13 MM
	V836647935	X	LINER THICKNESS 9.23 MM
12	V836647502	12	CYLINDER LINER O-RING (11) [A]
13	V836647503	6	CYLINDER LINER O-RING (11) [A]
14	V640016016	4	PLUG [A]
15	V836852744	1	PLUG
16	V837069057	1	PLUG
17	V640325110	4	PLUG
18	V615871014	4	SEALING WASHER [A]
19	V614601524	1	O-RING
20	V528801380	6	HEX CAP SCREW M8 X 20
21	V836847994	1	FLANGE
22	V836322852	1	GASKET [A]
23	V836119837	1	HOSE COUPLER
24	V837074224	6	PISTON COOLING JET
25	V528801362	5	HEX CAP SCREW
26	V500050840	1	FLAT WASHER
27	V837073901	1	COVER
28	V837073900	1	ECU BRACKET
29	V837074327	6	RUBBER BUSHING
	V837084129	6	DAMPER [B]
30	V837069056	3	SCREW
31	V640325018	1	PLUG
32	V836664377	1	COCK
33	V615881824	3	SEALING WASHER [A]
34	V615871016	1	SEALING WASHER [A]
35	V836866957	1	COVER
36	V836866958	1	GASKET [A]
37	V581804182	3	HEX SOCKET SCREW M6 X 16

Item	Part Number	Qty	Description Comments
38	V581804202	4	HEX SOCKET SCREW M6 X 20
39	V615881216	1	SEALING WASHER [A]
40	V640045112	1	PLUG
41	V836867635	1	ENGINE MOUNT LEFT HAND
41	V836867636	1	ENGINE MOUNT RIGHT HAND
42	V529902680	4	HEX CAP SCREW M14 X 65
43	V529902720	4	HEX CAP SCREW M14 X 85
44		1	SPEED SENSOR SEE PAGE 01-0019
45		1	OIL PRESS SWITCH SEE PAGE 01-0019
46		1	CONTROL UNIT SEE PAGE 01-0019 [A] INCLUDED IN GASKET SET FOR ENGINE [B] TIER2 ENGINE

MF 7619 TRACTOR (DYNA 6) (B346025 - F174044)
1-WH20-016-A

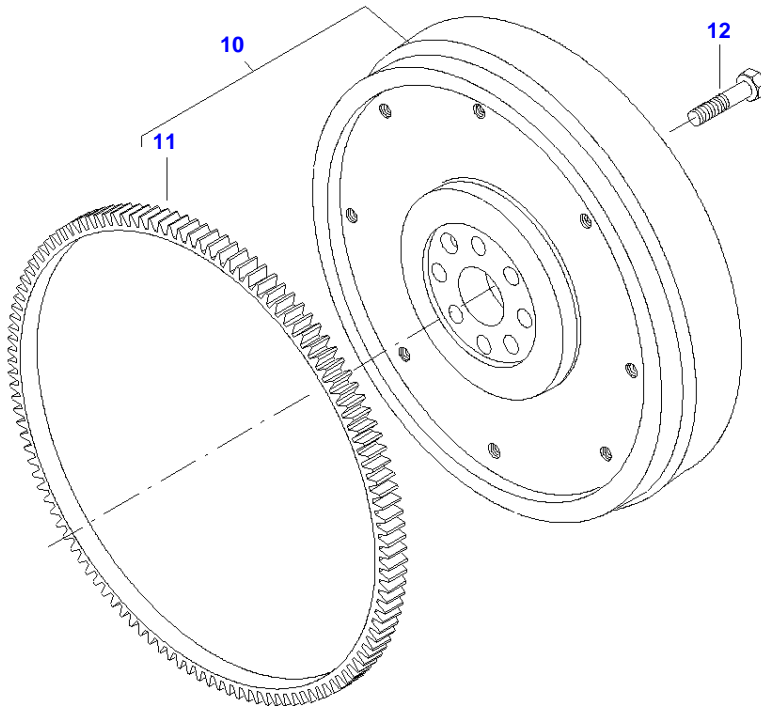
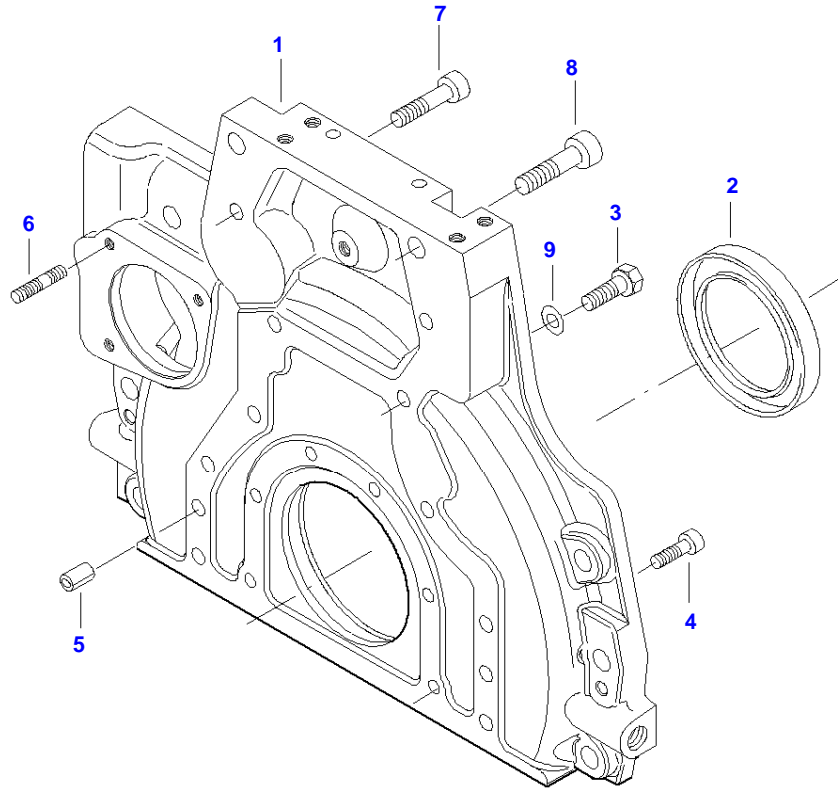
1-WH20-016-A



TIMING GEAR HOUSING

Item	Part Number	Qty	Description Comments
1	V837073565	1	TIMING GEAR CASE
2	V581804600	10	HEX SOCKET SCREW M8 X 20
3	V528801400	2	HEX CAP SCREW M8 X 25
4	V598359850	3	PIN
5	V529801470	3	HEX CAP SCREW M8 X 60
6	V529801540	1	HEX CAP SCREW M8 X 95
7	V837073583	1	IDLER GEAR
8	V581705910	1	HEX SOCKET SCREW M14 X 70
9	V581705430	1	HEX SOCKET SCREW M12 X 30
10	V528801062	1	HEX CAP SCREW M6 X 16
11	V614601718	1	O-RING
12	V640045022	1	PLUG
13	V615882227	1	SEALING WASHER [A]
14	V837073566	1	GEAR HOUSING FRONT COVER
15	V528801380	2	HEX CAP SCREW M8 X 20
16	V615870814	2	SEALING WASHER [A]
17	V836840883	1	CRANKSHAFT SEAL [A]
	V836873100	X	SPACER THICKNESS 3.00 MM
18	V836017927	1	CAP
19	V614603540	1	O-RING [A]
20	V528801410	6	HEX CAP SCREW M8 X 30
21	V529801440	9	HEX CAP SCREW M8 X 45
22	V529801520	1	HEX CAP SCREW M8 X 85
23	V836855636	1	SHIELD
24	V836120989	1	WASHER
25	V581705130	1	HEX SOCKET SCREW M10 X 80
26	V500951000	1	SPRING WASHER
27	V837073101	1	BELT TENSIONER
28	V581804650	4	HEX SOCKET SCREW M8 X 40
29	V837074489	1	RETAINING PLATE
30	V836866312	1	FLANGE
31	V836866321	1	PULLEY
	V837074402	1	PULLEY, IDLER [B]
32		1	SPEED SENSOR SEE PAGE 01-0019 [A] INCLUDED IN GASKET SET FOR ENGINE [B] TIER2 ENGINE

1-WA07-041-A



Item	Part Number	Qty	Description Comments
1	V837074188	1	FLYWHEEL HOUSING
2	V614500002	1	CRANKSHAFT SEAL
	V836020054	X	[B] SPACER THICKNESS 2.00 MM
3	V528702220	8	HEX CAP SCREW
4	V581705030	6	HEX SOCKET SCREW
5	V598359850	2	PIN
6	V546801815	3	STUD BOLT
7	V581705470	2	HEX SOCKET SCREW
8	V581706270	2	HEX SOCKET SCREW
9	V500951200	8	SPRING WASHER
10	V836867613	1	FLYWHEEL
11	V836659026	1	STARTER RING (10)
12	V529702250	8	HEX CAP SCREW
	V528702230	8	HEX CAP SCREW [A] [A] TIER2 ENGINE [B] INCLUDED IN GASKET SET FOR ENGINE

Item	Part Number	Qty	Description Comments
1	V837073983	1	CRANKSHAFT
2	V836867857	1	KEY
3	V837074081	6	PISTON
4		6	(3) PISTON PIN NOT SERVICED,ORDER Ref. 3
5		12	(3) CIRCLIP NOT SERVICED,ORDER Ref. 3
6	V837079460	6	PISTON RING KIT
7		1	(3) KIT, CONROD NOT SERVICED,ORDER Ref. 28
8	V836864141	12	CONNECTING ROD BOLT
9	V836110646	6	BEARING BUSH
10	V836110552	6	BEARING SHELL STANDARD 67.981-68.000 MM
	V836112762	X	BEARING SHELL 67.731-67.750 MM
	V836112763	X	BEARING SHELL 67.481-67.500 MM
	V836112765	X	BEARING SHELL 66.981-67.000 MM
	V836112767	X	BEARING SHELL 66.481-66.500 MM
11	V836840944	6	MAIN BEARING STANDARD n?1 ... 6 89.985-90.020 MM
	V836840978	X	MAIN BEARING N?1 ... 7 89.735-89.770 MM
	V836840979	X	MAIN BEARING N?1 ... 7 89.485-89.520 MM
	V836840980	X	MAIN BEARING N?1 ... 7 88.985-89.020 MM
	V836840981	X	MAIN BEARING N?1 ... 7 88.485-88.520 MM
12	V836879152	1	MAIN BEARING STANDARD N?7 89.985-90.020 MM
13	V836674069	1	GEAR,CRANKSHAFT
14	V837073560	1	GEAR,CRANKSHAFT
15	V836855637	1	RING
16	V837070178	1	CRANKSHAFT HUB
	V837073678	1	CRANKSHAFT HUB [A]
17	V837070177	1	CRANKSHAFT VIBRATION DAMPENER
18	V836847641	1	CRANKSHAFT NUT
19	V529702250	6	HEX CAP SCREW M12 X 50
20	V836867660	1	CRANKSHAFT PULLEY
21	V836840928	1	CONNECTING ROD KIT
22	V836840945	X	THRUST WASHER STD
	V836840982	X	THRUST WASHER 0.10 MM

Massey Ferguson

7619 TRACTOR (DYNA 6) (B346025 - F174044)

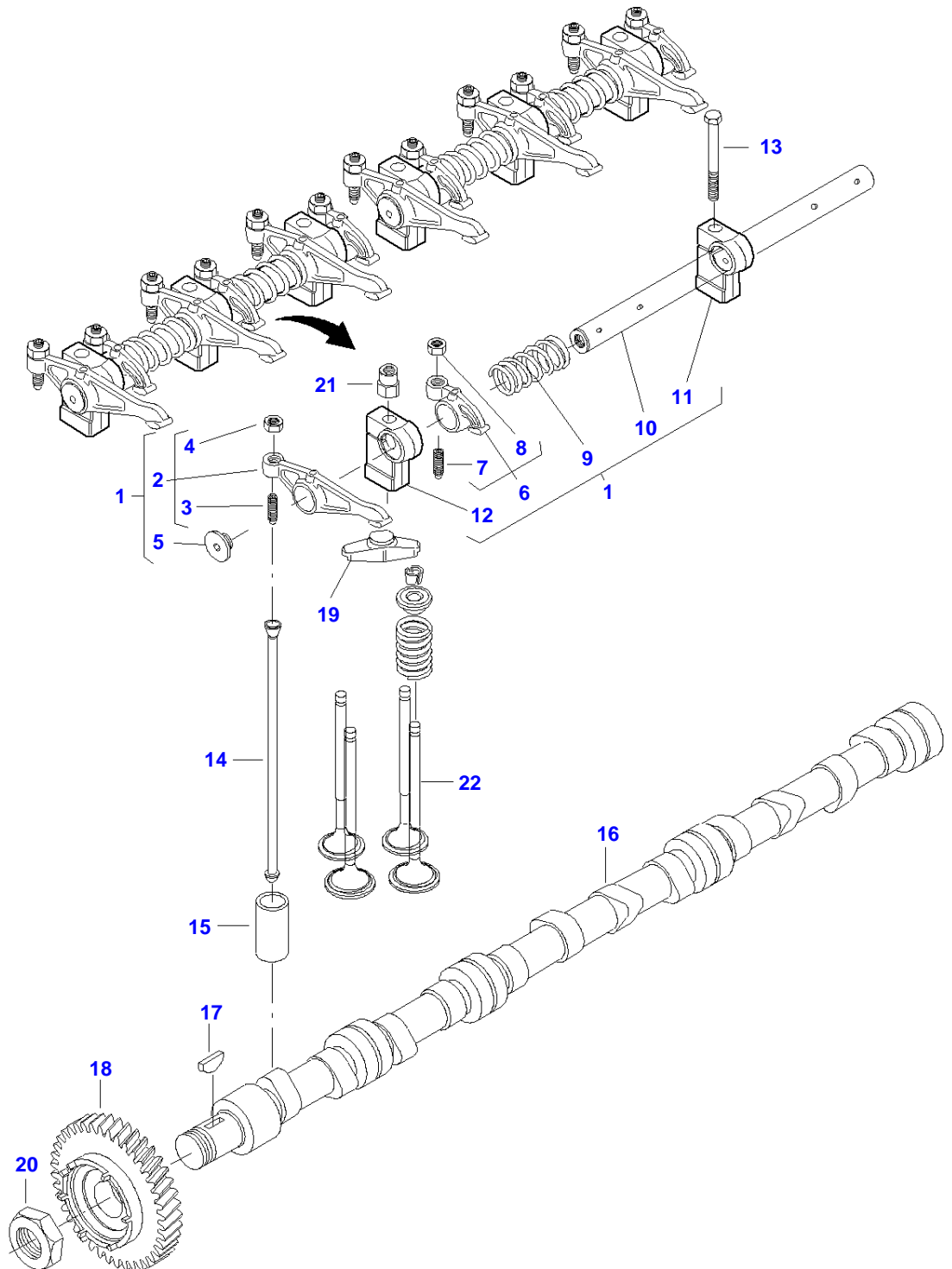
3906347

CRANKSHAFT, PISTONS & PISTON ROD

Page01-0006

Item	Part Number	Qty	Description Comments
22	V836840983	X	THRUST WASHER 0.20 MM [A] TIER2 ENGINE

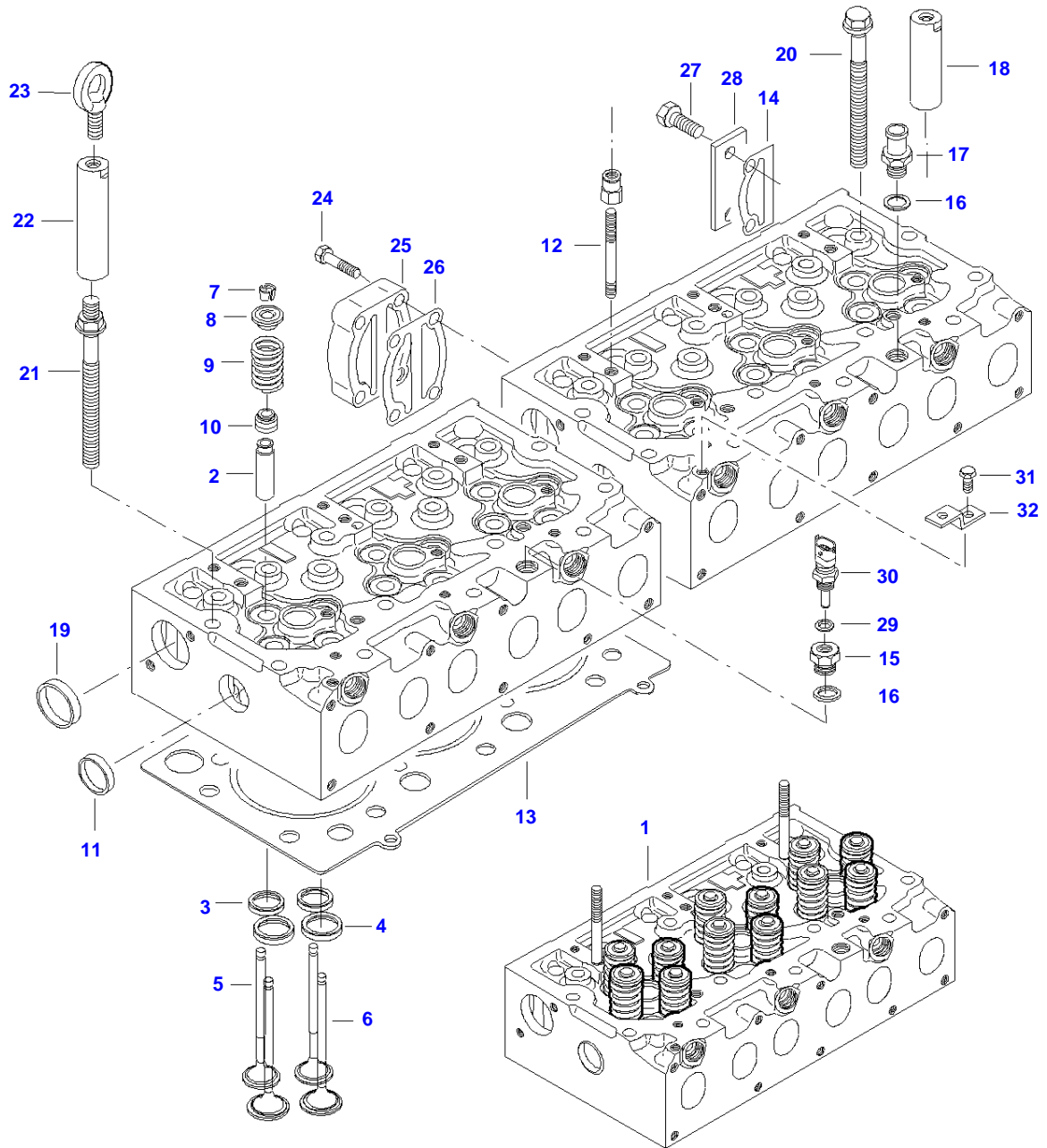
1-WH22-006-A



Item	Part Number	Qty	Description Comments
1	V837069016	2	ROCKER SHAFT ASM
2	V837069011	6	ROCKER ARM (1)
3	V837069023	6	VALVE ROCKER ADJUSTMENT SCREW (2)
4	V512861000	6	NUT (2)
5	V837069020	4	PLUG (1)
6	V837069013	6	ROCKER ARM (1)
7	V837069023	6	VALVE ROCKER ADJUSTMENT SCREW (6)
8	V512861000	6	NUT (6)
9	V837069019	4	SPRING (1)
10	V837069015	2	SHAFT (1)
11	V837069018	2	ROCKER SHAFT BRACKET (1)
12	V837069017	4	ROCKER SHAFT BRACKET (1)
13	V529801910	2	HEX CAP SCREW M10 X 80
14	V837070119	12	PUSH ROD
15	V836014264	12	TAPPET
16	V837069101	1	CAMSHAFT
17	V603305760	1	WOODRUFF KEY
18	V837073562	1	GEAR,CAMSHAFT
19	V837073089	12	VALVE BRIDGE
20	V837069085	1	NUT
21	V836655406	4	NUT
22		1	EXHAUST VALVE SEE PAGE 01-0008

MF 7619 TRACTOR (DYNA 6) (B346025 - F174044)
1-WH03-025-A

1-WH03-025-A



CYLINDER HEAD

Item	Part Number	Qty	Description Comments
1	V837073233	2	CYLINDER HEAD
2	V837073174	24	VALVE GUIDE (1)
3	V837064907	12	VALVE SEAT (1) [A]
4	V837064908	12	VALVE SEAT (1) [B]
5	V837069002	12	EXHAUST VALVE (1)
6	V837069003	12	INTAKE VALVE (1)
7	V837064910	48	COTTER (1)
8	V837069004	24	SPRING PLATE (1)
9	V837069005	24	VALVE SPRING (1)
10	V837073165	24	VALVE STEM GASKET (1) [D]
11	V836647942	8	PLUG (1)
12	V546801900	4	STUD BOLT (1) M10 X 75
13	V837070290	2	CYLINDER HEAD GASKET [D]
14	V836867753	1	GASKET [D]
15	V836119643	1	THREADED NIPPLE
16	V615881822	2	SEALING WASHER [D]
17	V836119837	1	HOSE COUPLER
18	V836867567	1	LIFTING EYE EXTENSION 86 MM
19	V640016045	2	PLUG
20	V837069025	24	CYLINDER HEAD BOLT
21	V837073571	10	CYLINDER HEAD BOLT
22	V837067791	1	LIFTING EYE EXTENSION 136 MM
23	V836640752	2	LIFT EYE
24	V528801830	4	HEX CAP SCREW M10 X 40
	V528801820	4	HEX CAP SCREW M10 X 35 [C]
25	V836855348	1	CONNECTION FLANGE
26	V836867752	1	GASKET [D]
27	V528801800	2	HEX CAP SCREW M10 X 25
28	V836855350	1	COVER
29	V615881418	1	SEALING WASHER [D]
30		1	TEMPERATURE SENSOR SEE PAGE 01-0019
31	V528801360	1	HEX CAP SCREW M8 X 16
32	V836747849	1	SUPPORT [A] FOR VALVE EXHAUST [B] FOR VALVE INLET [C] TIER2 ENGINE [D] INCLUDED IN GASKET SET FOR CYLINDER HEAD



Suggest:

For more complete manuals. Please go to the home page.

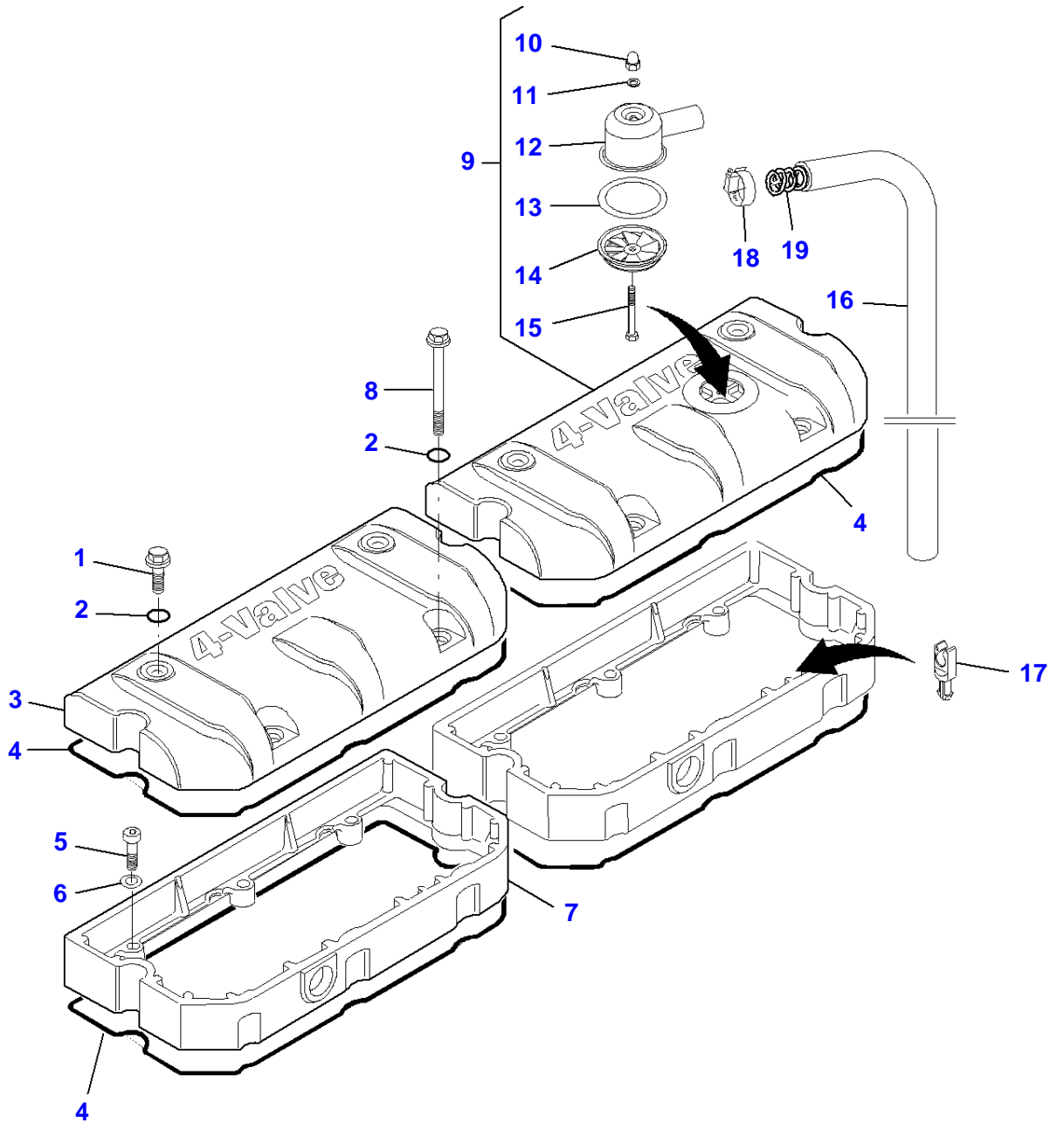
<https://www.ebooklibonline.com>

If the above button click is invalid. Please download this document first, and then click the above link to download the complete manual.

Thank you so much for reading

Item	Part Number	Qty	Description Comments
1	V837070452	1	VALVE ROCKER COVER
2	V519600602	1	NUT (1) M6
3	V836667508	1	SEALING WASHER (1)
4	V837070442	1	BREATHER (1)
5	V836667459	1	GASKET (1)
6	V837070443	1	BREATHER (1)
7	V528801172	1	HEX CAP SCREW (1) M6 X 60
8	V837067881	2	VALVE ROCKER COVER GASKET [A]
9	V540801780	4	HEXAGON FLANGE BOLT M10 X 20
10	V614901030	8	O-RING [A]
11	V540801910	4	HEXAGON FLANGE BOLT M10 X 80
12	V837069022	1	VALVE ROCKER COVER
13	V581804630	6	HEX SOCKET SCREW M8 X 30
14	V500950800	6	SPRING WASHER
15	V837073888	2	VALVE ROCKER COVER FRAME
16	V837067881	2	VALVE ROCKER COVER GASKET [A]
17	V837073227	4	BAND [A] INCLUDED IN GASKET SET FOR CYLINDER HEAD

1-WH23-016-A



<https://www.ebooklibonline.com>

Hello dear friend!

Thank you very much for reading.

Enter the link into your browser.

The full manual is available for immediate download.

<https://www.ebooklibonline.com>