

Page Number	Page Title	Page Reference
01-000-TOC	ENGINE ACW1606260 33 CWC3	01-000-TOC
02-000-TOC	ENGINE INSTALLATION	02-000-TOC
03-000-TOC	AXLES	03-000-TOC
04-000-TOC	STEERING SYSTEM	04-000-TOC
05-000-TOC	DRIVE TRAIN SYSTEM	05-000-TOC
06-000-TOC	BRAKE SYSTEM	06-000-TOC
07-000-TOC	HYDRAULIC SYSTEM	07-000-TOC
08-000-TOC	ELECTRICAL SYSTEM	08-000-TOC
09-000-TOC	CAB	09-000-TOC
10-000-TOC	PLATFORM	10-000-TOC
11-000-TOC	CHASSIS	11-000-TOC
12-000-TOC	DECALS	12-000-TOC
13-000-TOC	WHEELS	13-000-TOC
14-000-TOC	IMPLEMENT DRIVE SYSTEM	14-000-TOC
15-000-TOC	IMPLEMENT LIFT SYSTEM REAR	15-000-TOC
16-000-TOC	LINKAGE	16-000-TOC
17-000-TOC	FRONT/REAR LOADERS	17-000-TOC
18-000-TOC	ACCESSORIES	18-000-TOC
19-000-TOC	GENERAL INFORMATION	19-000-TOC

MF 5710 TRACTOR (ECO3 / TIER3 ; BR)
AP_ENGAS_ECO33

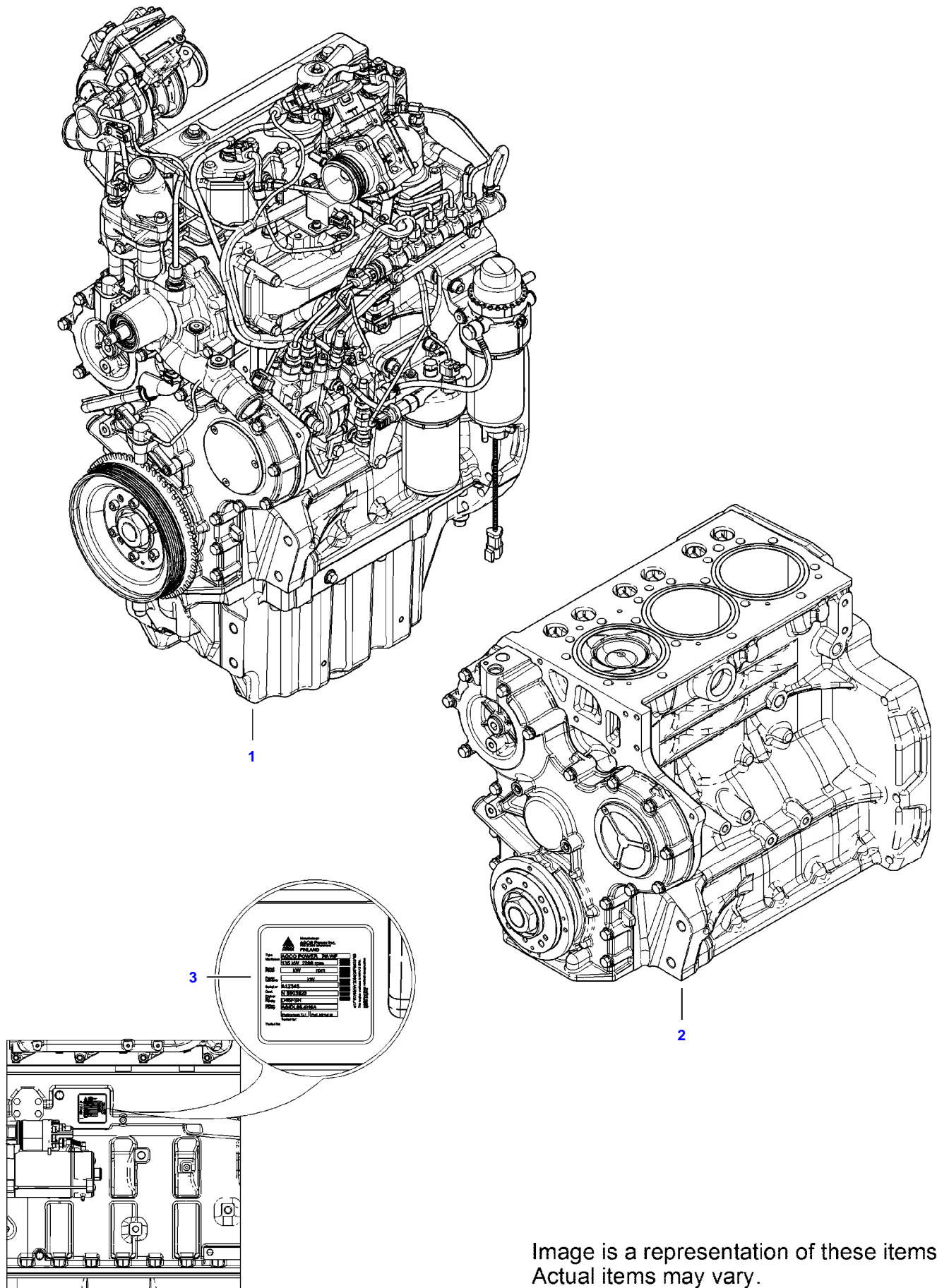


Image is a representation of these items.
Actual items may vary.

Item	Part Number	Qty	Description Comments	Technical Specification
1	ACW1606260	1	ENGINE	33 CWC3
2	V837086072	1	SHORT BLOCK ENGINE	33 CWC3
3	V837079921	1	LABEL	

<https://www.ebooklibonline.com>

Hello dear friend!

Thank you very much for reading.

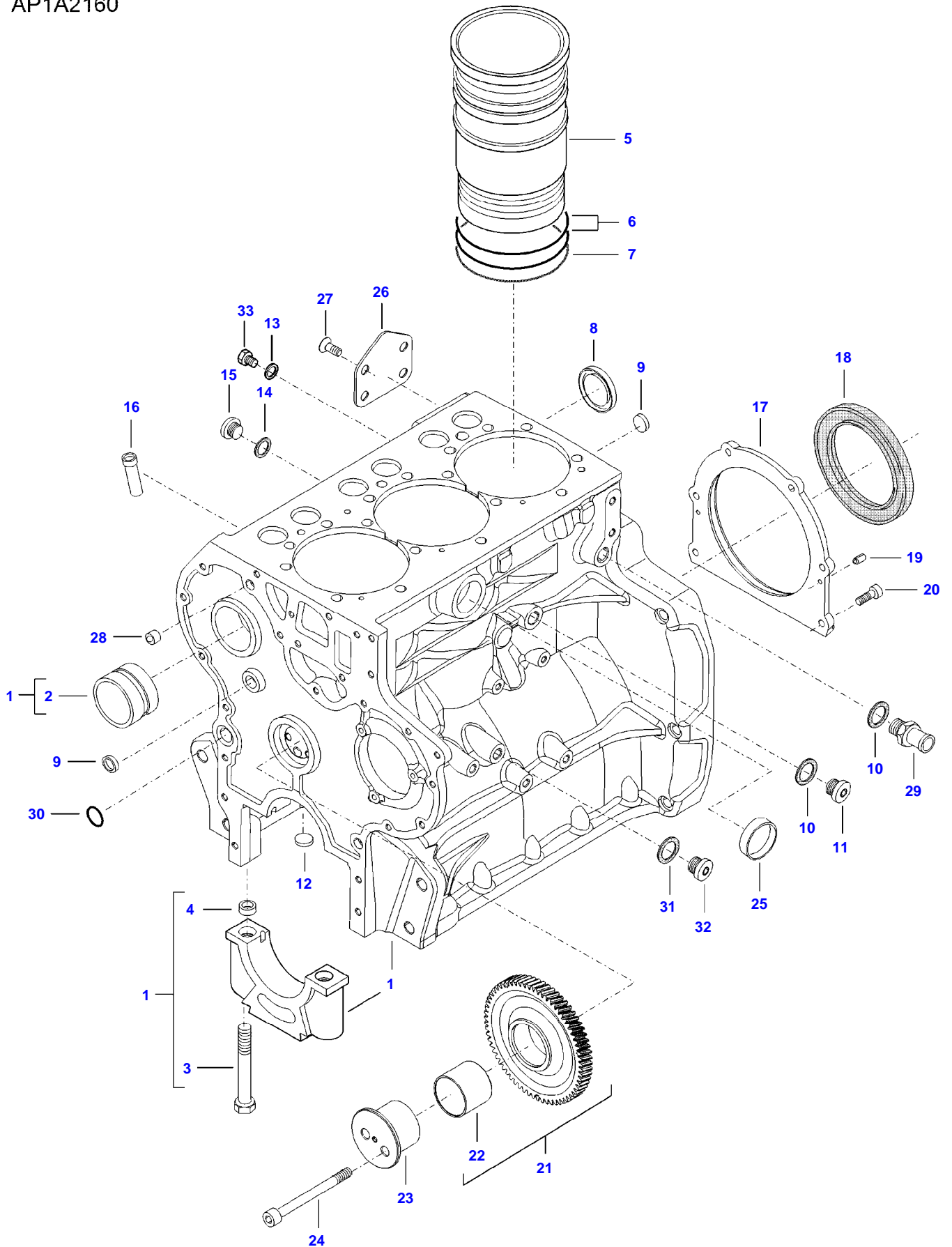
Enter the link into your browser.

The full manual is available for immediate download.

<https://www.ebooklibonline.com>

MF 5710 TRACTOR (ECO3 / TIER3 ; BR)
AP1A2160

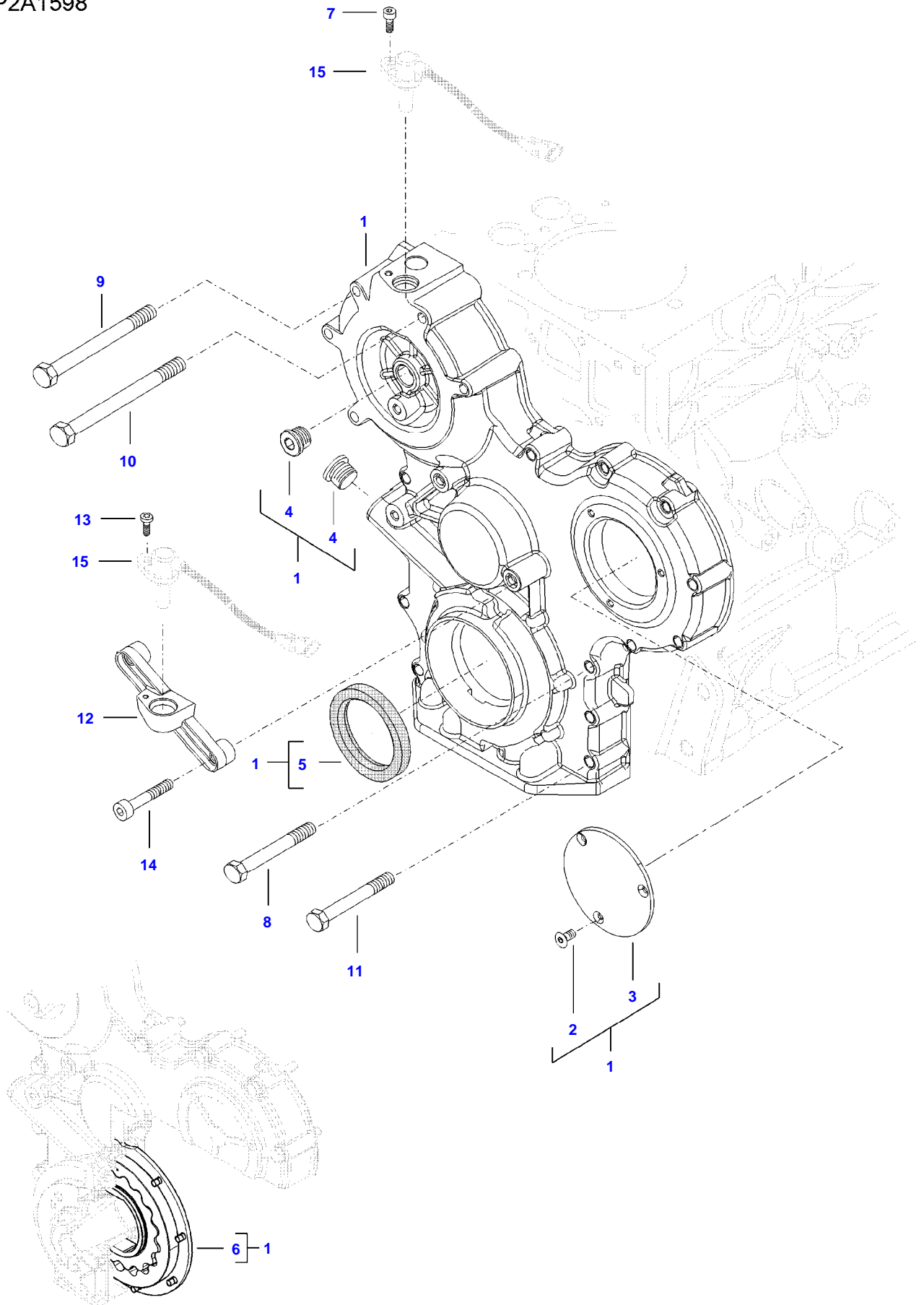
AP1A2160



Item	Part Number	Qty	Description Comments
1	V837081001	1	CYLINDER-BLOCK
2	V836866069	1	CAMSHAFT BEARING BUSH (1)
3	V837081037	8	HEX CAP SCREW (1)
4	V837081041	8	GUIDE SLEEVE (1)
5	V837081031	3	LINER
6	V836647502	6	CYLINDER LINER O-RING [B]
7	V836647503	3	CYLINDER LINER O-RING [B]
8	V837081133	1	PLUG
9	V640016016	2	CUP PLUG
10	V615881824	2	SEALING WASHER [B]
11	V640325018	1	PLUG
12	V640016020	1	CUP PLUG
13	V615870812	1	SEALING WASHER
14	V615871014	2	SEALING WASHER [B]
15	V640325110	2	PLUG
16	V837081103	1	PIPE
17	V837081321	1	COVER
18	V837081286	1	CRANKSHAFT SEAL [B]
19	V595959140	2	PIN
20	V581804580	6	HEX SOCKET SCREW
21	V837081084	1	IDLER GEAR
22	V837081019	1	BUSH (21)
23	V837081017	1	SHAFT
24	V581705100	2	HEX SOCKET SCREW
25	V640016040	1	CUP PLUG
26	V837081427	1	COVER
27	V579804602	4	HEX SOCKET SCREW
28	V598359850	2	PIN
29	V837081395	1	HOSE COUPLER
30	V614602030	1	O-RING [B]
31	V615881420	1	SEALING WASHER [B]
32	V640325014	1	PLUG
33	V528801342	1	HEX CAP SCREW [B] INCLUDED IN COMPLETE ENGINE GASKET KIT 2

MF 5710 TRACTOR (ECO3 / TIER3 ; BR)
AP2A1598

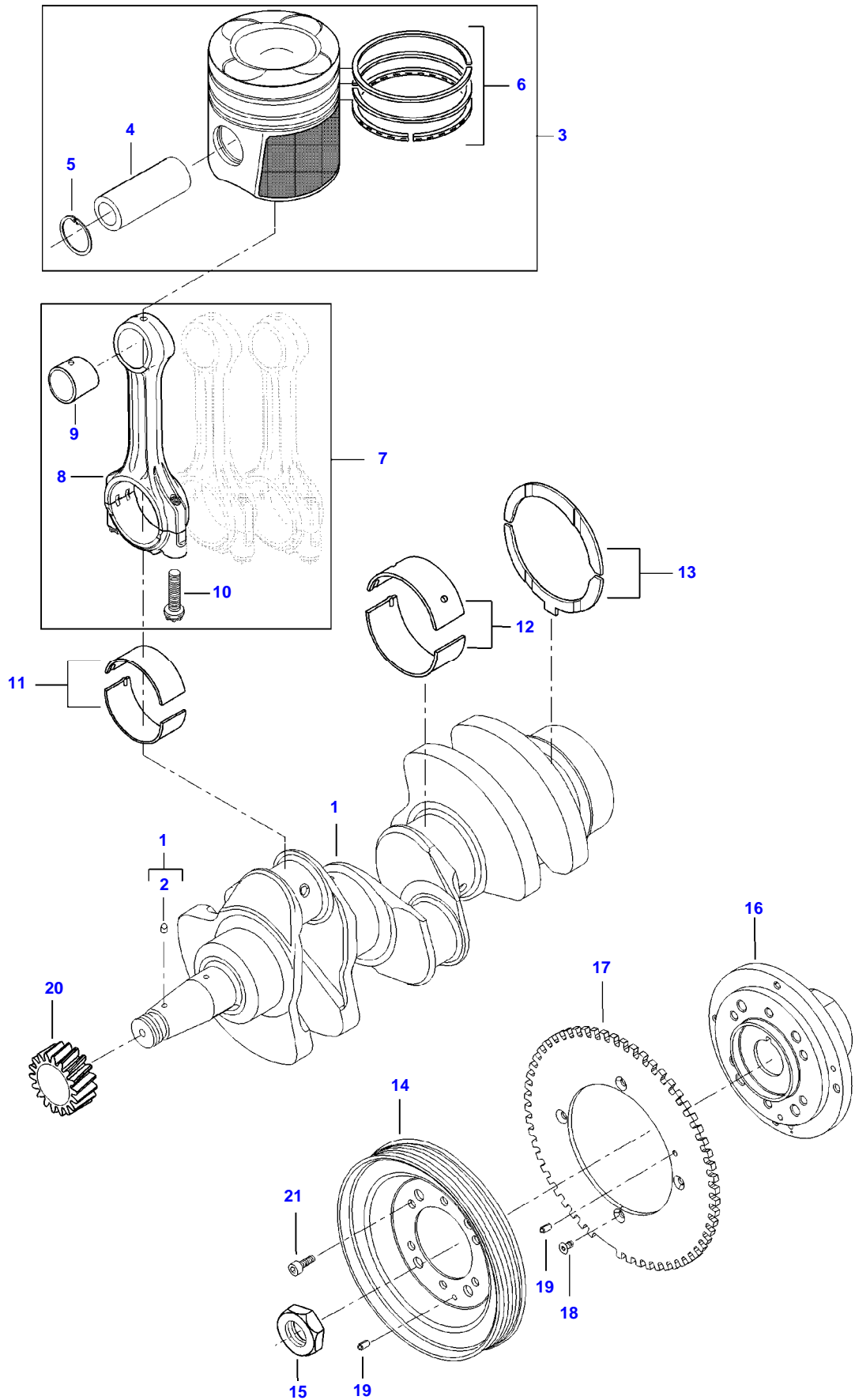
AP2A1598



Item	Part Number	Qty	Description Comments
1	V837081039	1	TIMING GEAR CASE
2	V579904162	3	HEX SOCKET SCREW (1)
3	V837081057	1	COVER (1)
4	V640325120	2	PLUG (1)
5	V836840883	1	CRANKSHAFT SEAL (1) [B]
6		1	NOT AVAILABLE AS SINGLE PART (1)
7	V581804182	1	HEX SOCKET SCREW
8	V540801470	1	HEXAGON FLANGE BOLT
9	V540801490	4	HEXAGON FLANGE BOLT
10	V540801510	1	HEXAGON FLANGE BOLT
11	V540801450	12	HEXAGON FLANGE BOLT
12	V837081375	1	SPEED SENSOR SUPPORT
13	V590253388	1	SCREW
14	V577804620	2	HEX SOCKET SCREW
15		2	SEE PAGE 01-0015 [B] INCLUDED IN COMPLETE ENGINE GASKET KIT 2

MF 5710 TRACTOR (ECO3 / TIER3 ; BR)
AP4A2188

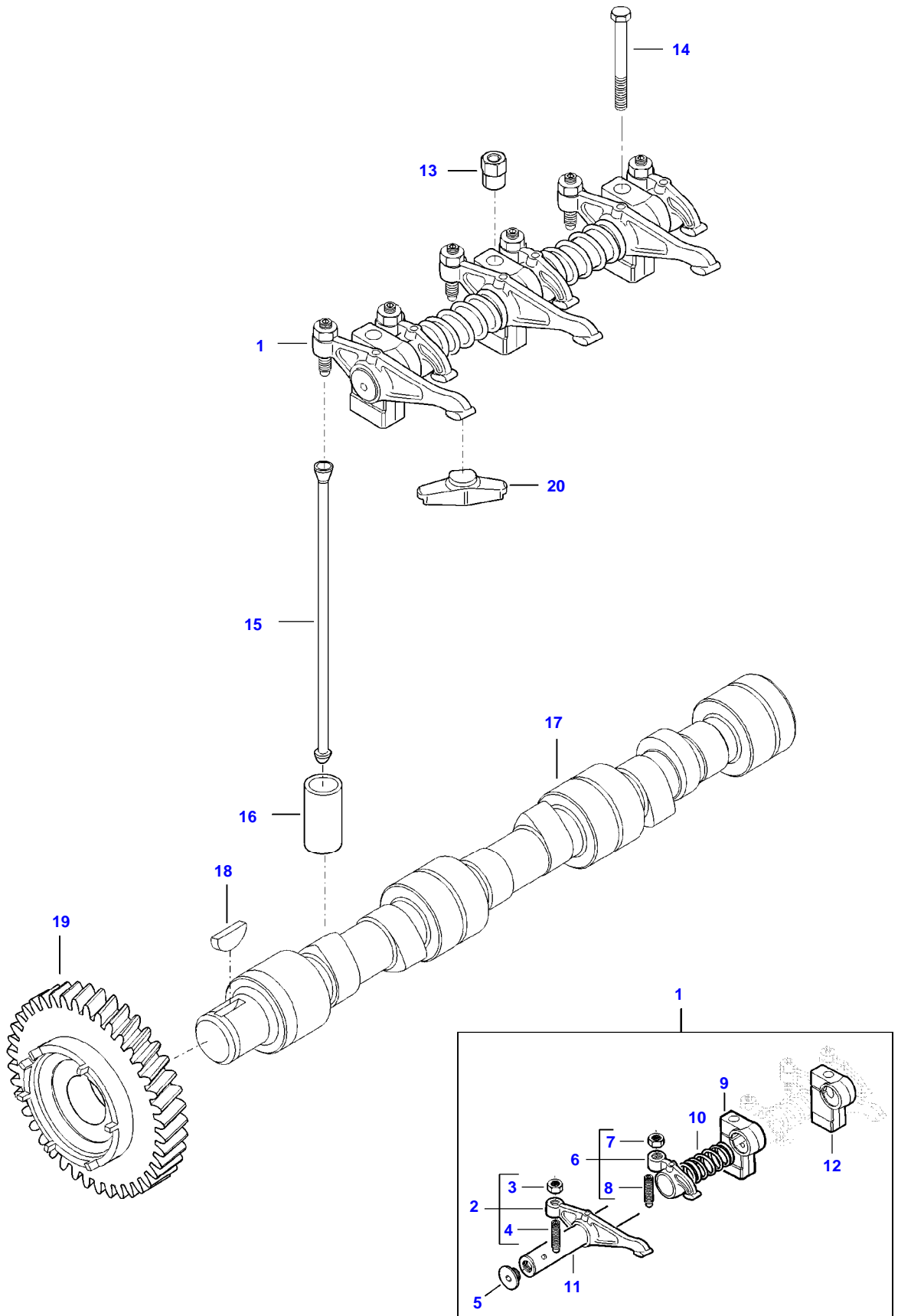
AP4A2188



Item	Part Number	Qty	Description Comments
1	V837081002	1	CRANKSHAFT
2	V837081240	2	KEY
3	V837086493	3	(1) PISTON
4		3	NOT AVAILABLE AS SINGLE PART (3)
5		6	NOT AVAILABLE AS SINGLE PART (3)
6	V837079460	3	PISTON RING KIT (3)
7	V837079659	1	CONNECTING ROD KIT
8		3	NOT AVAILABLE AS SINGLE PART (7)
9	V837081025	3	BUSH (7),(8)
10	V837081024	6	CONNECTING ROD BOLT (7),(8)
11	V837091164	3	CONROD BEARING
12	V836655514	4	MAIN BEARING
13	V836119459	2	THRUST WASHER
14	V837086460	1	CRANKSHAFT PULLEY
15	V837081149	1	NUT
16	V837081051	1	CRANKSHAFT HUB
17	V837081059	1	GEAR
18	V579904160	4	HEX SOCKET SCREW
19	V595953360	2	PIN
20	V837081012	1	GEAR,CRANKSHAFT
21	V581804602	6	HEX SOCKET SCREW

MF 5710 TRACTOR (ECO3 / TIER3 ; BR)
AP5A2165

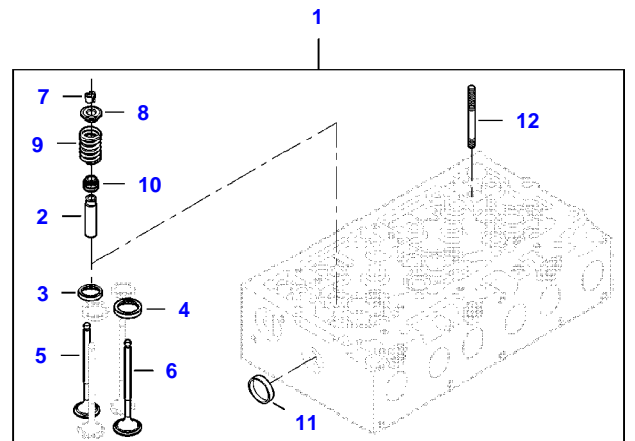
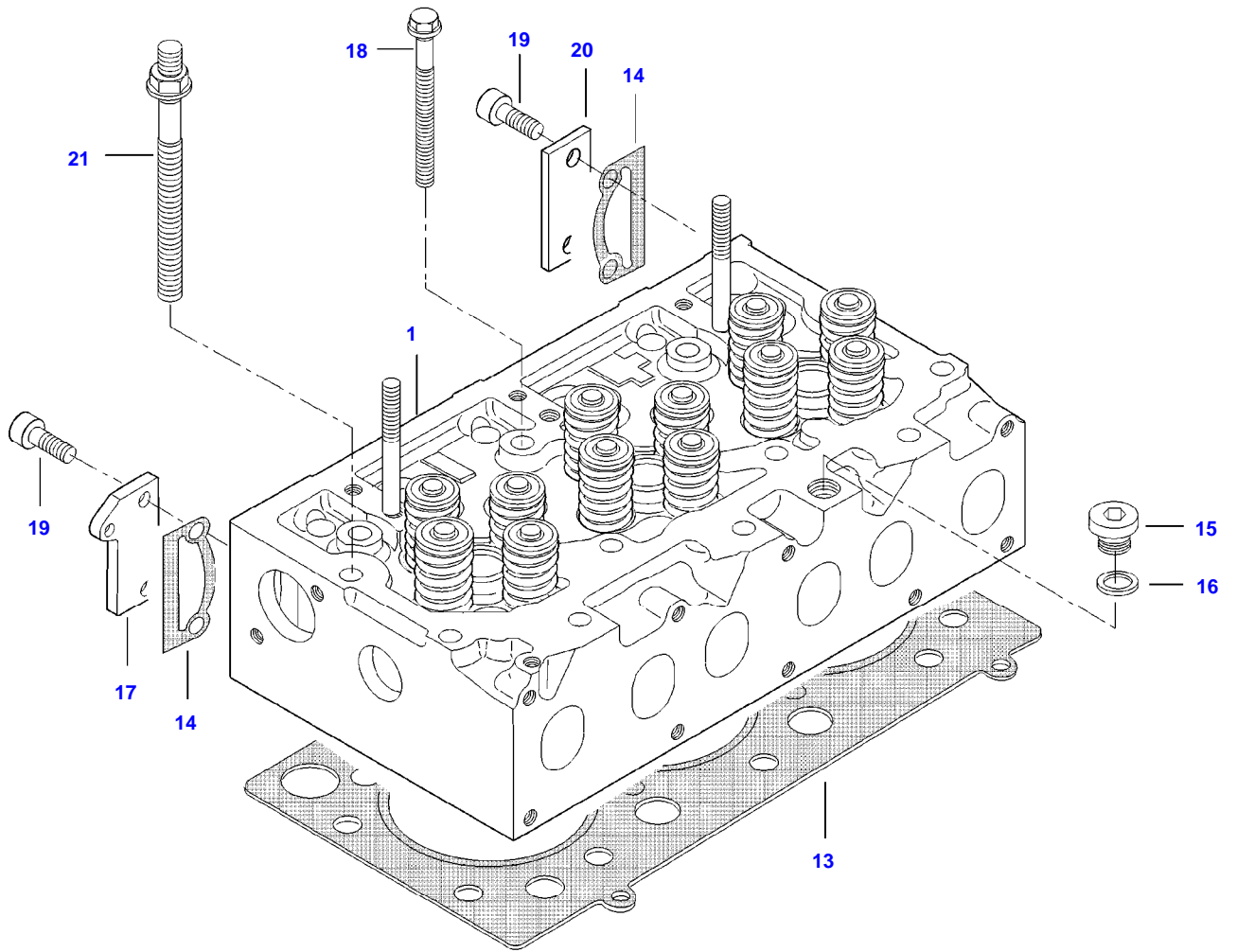
AP5A2165



Item	Part Number	Qty	Description Comments
1	V837069016	1	ROCKER SHAFT ASM
2	V837069011	3	ROCKER ARM (1)
3	V512861000	3	NUT (1),(2)
4	V837069023	3	VALVE ROCKER ADJUSTMENT SCREW (1),(2)
5	V837069020	2	PLUG (1)
6	V837069013	3	ROCKER ARM (1)
7	V512861000	3	NUT (1),(6)
8	V837069023	3	VALVE ROCKER ADJUSTMENT SCREW (1),(6)
9	V837069018	1	ROCKER SHAFT BRACKET (1)
10	V837069019	2	SPRING (1)
11	V837069015	1	SHAFT (1)
12	V837069017	2	ROCKER SHAFT BRACKET (1)
13	V836655406	2	SLEEVE NUT
14	V529801910	1	HEX CAP SCREW
15	V837081221	6	PUSHROD
16	V836014264	6	TAPPET
17	V837084988	1	CAMSHAFT
18	V603305760	1	WOODRUFF KEY
19	V837081299	1	GEAR,CAMSHAFT
20	V837073089	6	VALVE BRIDGE

MF 5710 TRACTOR (ECO3 / TIER3 ; BR)
AP6A2168

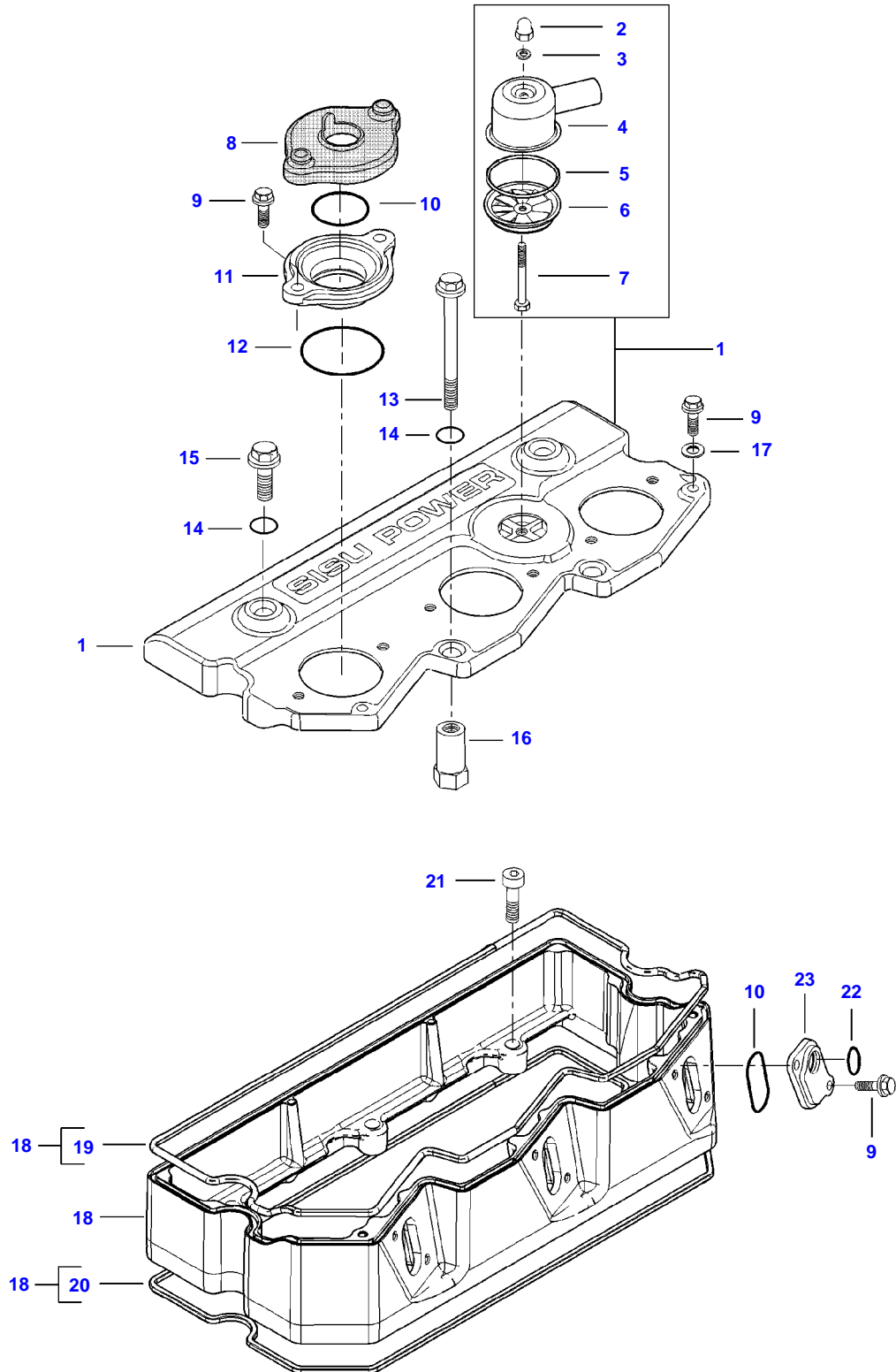
AP6A2168



Item	Part Number	Qty	Description Comments
1	V837073941	1	CYLINDER HEAD
2	V837073174	12	VALVE GUIDE (1)
3	V837064907	6	VALVE SEAT (1)
4	V837064908	6	VALVE SEAT (1)
5	V837069002	6	EXHAUST VALVE (1)
6	V837069003	6	INTAKE VALVE (1)
7	V837064910	24	COTTER (1)
8	V837069004	12	SPRING PLATE (1)
9	V837069005	12	VALVE SPRING (1)
10	V837073165	12	VALVE STEM GASKET (1) [A]
11	V836647942	4	PLUG (1)
12	V546901900	2	STUD BOLT (1)
13	V837084523	1	CYLINDER HEAD GASKET [A]
14	V836867753	2	GASKET [A]
15	V640325018	1	PLUG
16	V615881824	1	SEALING WASHER [A]
17	V837081397	1	COVER
18	V837069025	10	CYLINDER HEAD BOLT
19	V581805000	4	HEX SOCKET SCREW
20	V836855350	1	COVER
21	V837073571	7	CYLINDER HEAD BOLT [A] INCLUDED IN CYLINDER HEAD GASKET KIT 1

MF 5710 TRACTOR (ECO3 / TIER3 ; BR)
AP35A2170

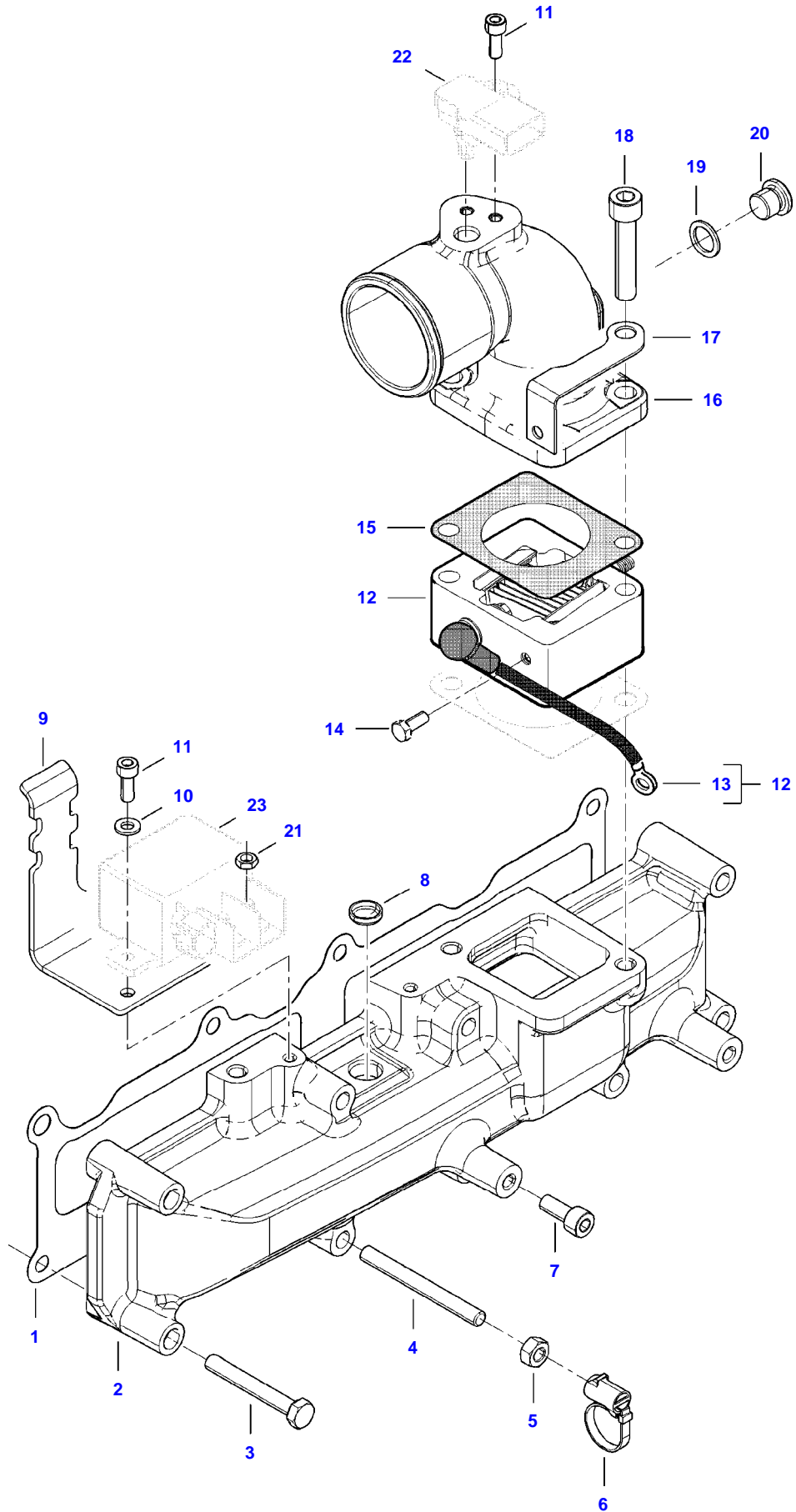
AP35A2170



Item	Part Number	Qty	Description Comments
1	V837086221	1	VALVE ROCKER COVER
2	V519600602	1	NUT (1)
3	V836684766	1	SEALING WASHER (1)
4	V837070442	1	BREATHER (1)
5	V614605930	1	O-RING (1)
6	V837070443	1	BREATHER (1)
7	V528801172	1	HEX CAP SCREW (1)
8	V837073756	3	COVER [A][C]
9	V540801082	14	HEXAGON FLANGE BOLT
10	V614903725	6	O-RING [A][C]
11	V837073753	3	FLANGE
12	V614606230	3	O-RING [A][C]
13	V540801852	2	HEXAGON FLANGE BOLT
14	V614901030	4	O-RING [A][C]
15	V540801780	2	HEXAGON FLANGE BOLT
16	V837073903	2	ADAPTER
17	V836667508	3	SEALING WASHER (1)
18	V837084245	1	VALVE ROCKER COVER FRAME
19	V837073749	1	VALVE ROCKER COVER GASKET (18)
20	V837067881	1	VALVE ROCKER COVER GASKET (18)
21	V581804630	3	HEX SOCKET SCREW
22	V614901725	3	O-RING
23	V837073754	3	FLANGE [A] INCLUDED IN CYLINDER HEAD GASKET KIT 1 [C] INCLUDED IN VALVE ADJUSTING GASKET KIT 3

MF 5710 TRACTOR (ECO3 / TIER3 ; BR)
AP7A2169

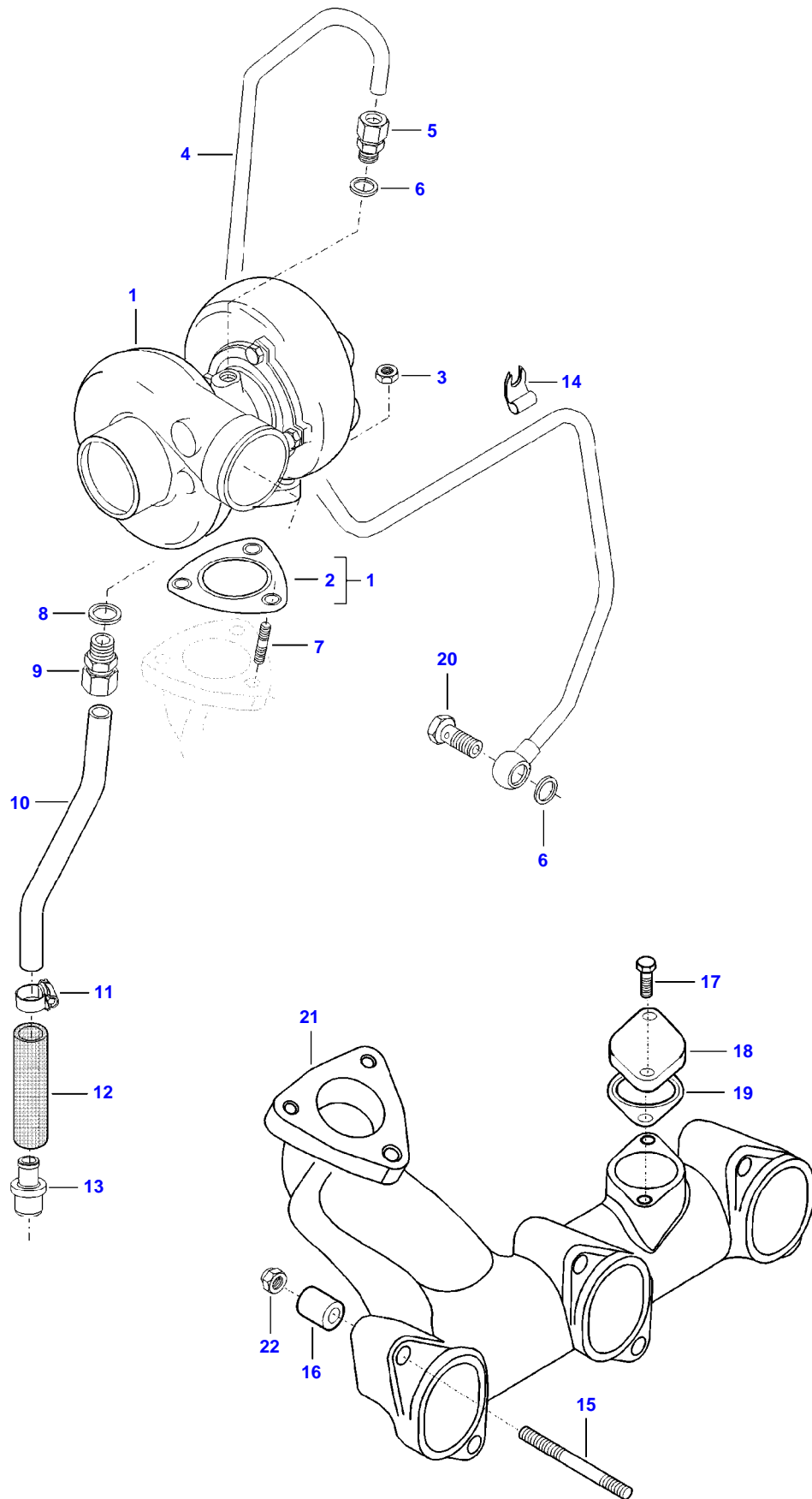
AP7A2169



Item	Part Number	Qty	Description Comments
1	V837081042	1	INTAKE MANIFOLD
2	V837069009	1	INTAKE MANIFOLD GASKET [A]
3	V529801470	5	HEX CAP SCREW
4	V546801490	2	STUD BOLT
5	V504800800	2	NUT
6	V837081468	1	CABLE CLAMP
7	V581804602	2	HEX SOCKET SCREW
8	V640016016	1	CUP PLUG
9	V837081217	1	SUPPORT
10	V500050642	2	WASHER
11	V581804182	3	HEX SOCKET SCREW
12	V836674519	1	INTAKE AIR PREHEATER
13	V836866713	1	WIRE (12)
14	V528801052	1	HEX CAP SCREW
15	V836666074	2	GASKET [A]
16	V837081490	1	AIR PIPE
17	V837081193	1	PLATE
18	V581705070	2	HEX SOCKET SCREW
19	V615881420	1	SEALING WASHER [A]
20	V640325014	1	PLUG
21	V504600602	1	NUT
22		1	SEE PAGE 01-0015
23		1	SEE PAGE 01-0015 [A] INCLUDED IN CYLINDER HEAD GASKET KIT 1

MF 5710 TRACTOR (ECO3 / TIER3 ; BR)
AP33A2171

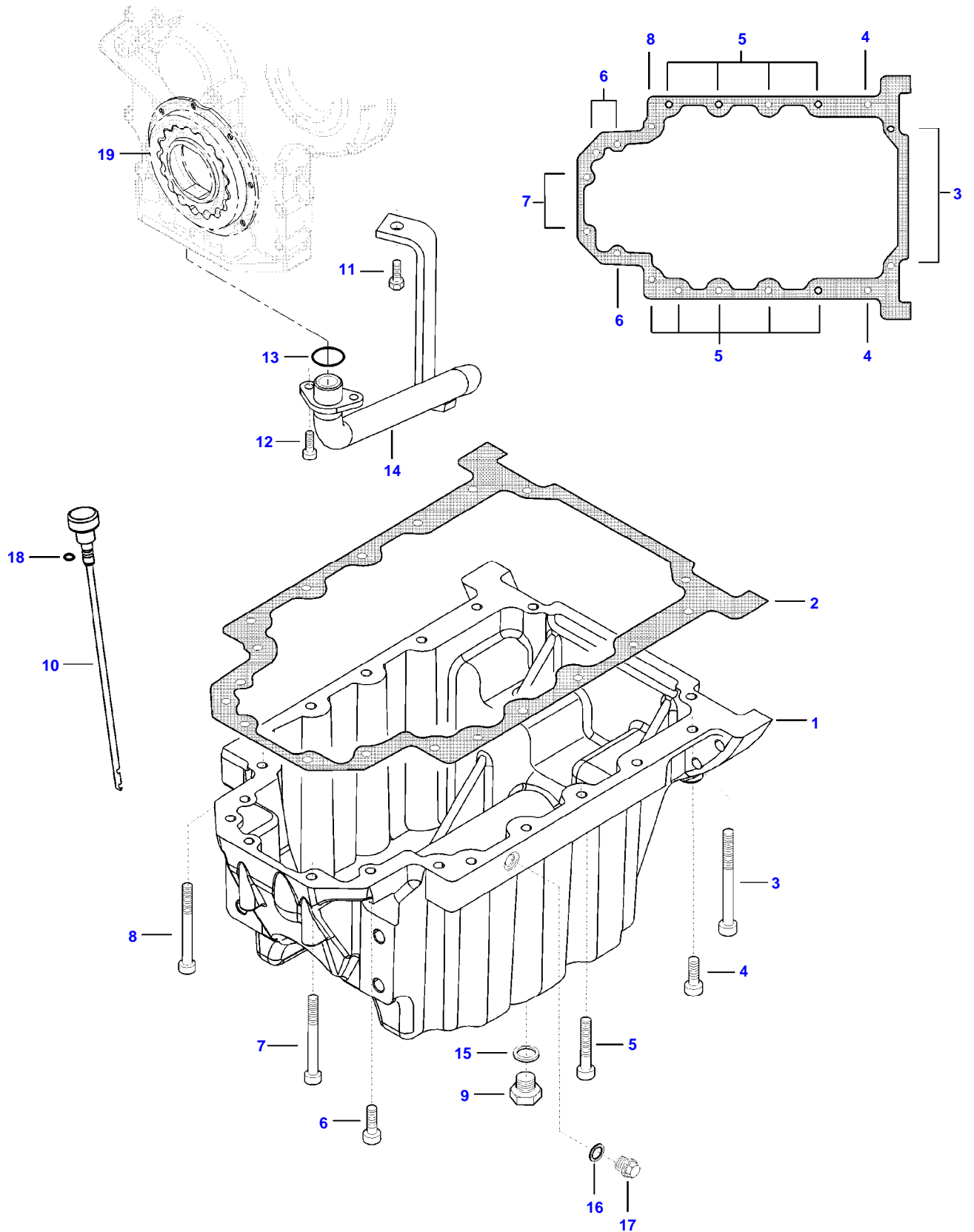
AP33A2171



Item	Part Number	Qty	Description Comments
1	V836659179	1	TURBOCHARGER
2	V836640276	1	GASKET (1) [A]
3	V504800800	3	NUT
4	V837081420	1	TURBOCHARGER LUBRICATION OIL PIPE
5	V641086008	1	STRAIGHT FITTING
6	V615881216	3	SEALING WASHER [A]
7	V546801380	3	STUD BOLT
8	V615881620	1	SEALING WASHER [A]
9	V641086012	1	STRAIGHT FITTING
10	V837081497	1	TURBOCHARGER LUBRICATION OIL PIPE
11	V602079516	2	HOSE CLIP
12	V837084856	1	HOSE
13	V837081405	1	FITTING
14	V837081461	1	CLAMP
15	V546801910	6	STUD BOLT
16	V835346219	6	SPACER PIECE
17	V528801362	2	HEX CAP SCREW
18	V837081055	1	CLOSING PLATE
19	V837081056	1	GASKET [A]
20	V640435008	1	BANJO BOLT
21	V837081383	1	EXHAUST MANIFOLD
22	V504601000	6	NUT [A] INCLUDED IN CYLINDER HEAD GASKET KIT 1

MF 5710 TRACTOR (ECO3 / TIER3 ; BR)
AP1311303

AP1311303



Item	Part Number	Qty	Description Comments
1	V837081021	1	OIL SUMP
2	V837081328	1	OIL SUMP GASKET [B]
3	V581705190	2	HEX SOCKET SCREW
4	V581705030	2	HEX SOCKET SCREW
5	V581705090	9	HEX SOCKET SCREW
6	V581805050	3	HEX SOCKET SCREW
7	V581805170	2	HEX SOCKET SCREW
8	V581705170	1	HEX SOCKET SCREW
9	V836655493	2	PLUG
10	V837081331	1	DIPSTICK
11	V528801360	1	HEX CAP SCREW
12	V581804182	2	HEX SOCKET SCREW
13	V614902124	1	O-RING [B]
14	V837081074	1	OIL PUMP SUCTION PIPE
15	V615881827	2	SEALING WASHER [B]
16	V615881420	1	SEALING WASHER [B]
17	V640305014	1	PLUG
18	V614900615	1	O-RING
19			

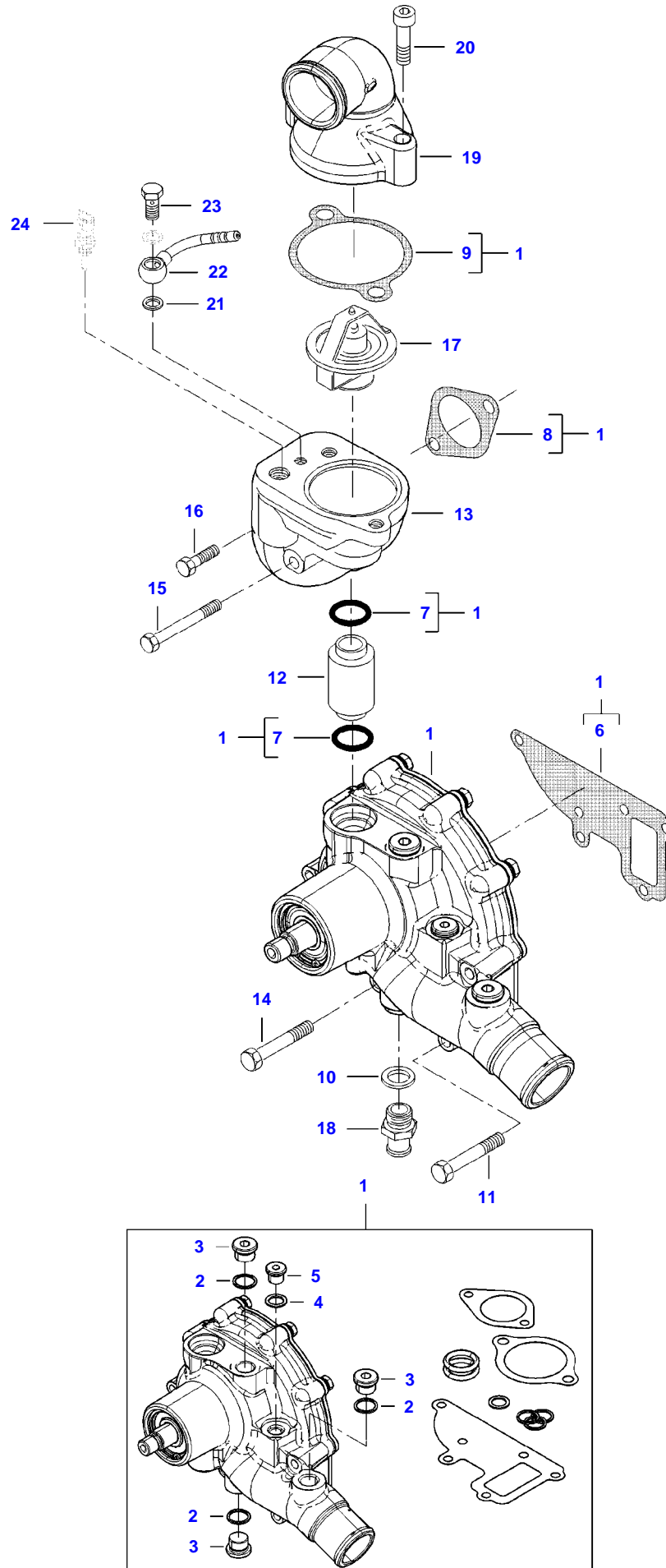
NOT AVAILABLE AS SINGLE PART
SEE PAGE 01-0003

[B] INCLUDED IN COMPLETE ENGINE GASKET KIT 2

Item	Part Number	Qty	Description Comments
1	V837079728	1	ENGINE OIL FILTER
2	V837081412	1	OIL FILTER ADAPTER
3	V837081143	1	FITTING
4	V837081053	1	OIL FILTER ADAPTER
5	V837081373	1	WATER PIPE
6	V614602030	2	O-RING [B]
7	V602079516	8	HOSE CLIP
8	V836859899	3	RUBBER ELBOW
9	V614702230	2	O-RING [B]
10	V837081095	1	OIL PIPE
11	V581804620	2	HEX SOCKET SCREW
12	V581804690	4	HEX SOCKET SCREW
13	V837081106	1	OIL FILLER CAP
14	V614603540	1	O-RING [B]
15	V528802180	2	HEX CAP SCREW
16	V837081423	1	WATER PIPE
17	V837081389	1	RUBBER HOSE
18	V837079660	1	OIL PRESSURE CONTROL VALVE
19		1	NOT AVAILABLE AS SINGLE PART (18)
20		1	NOT AVAILABLE AS SINGLE PART (18)
21	V837081174	1	SEALING WASHER (18) [B]
22	V837081175	1	PLUG (18) [B] INCLUDED IN COMPLETE ENGINE GASKET KIT 2

MF 5710 TRACTOR (ECO3 / TIER3 ; BR)
AP1711624

AP1711624





Suggest:

For more complete manuals. Please go to the home page.

<https://www.ebooklibonline.com>

If the above button click is invalid. Please download this document first, and then click the above link to download the complete manual.

Thank you so much for reading

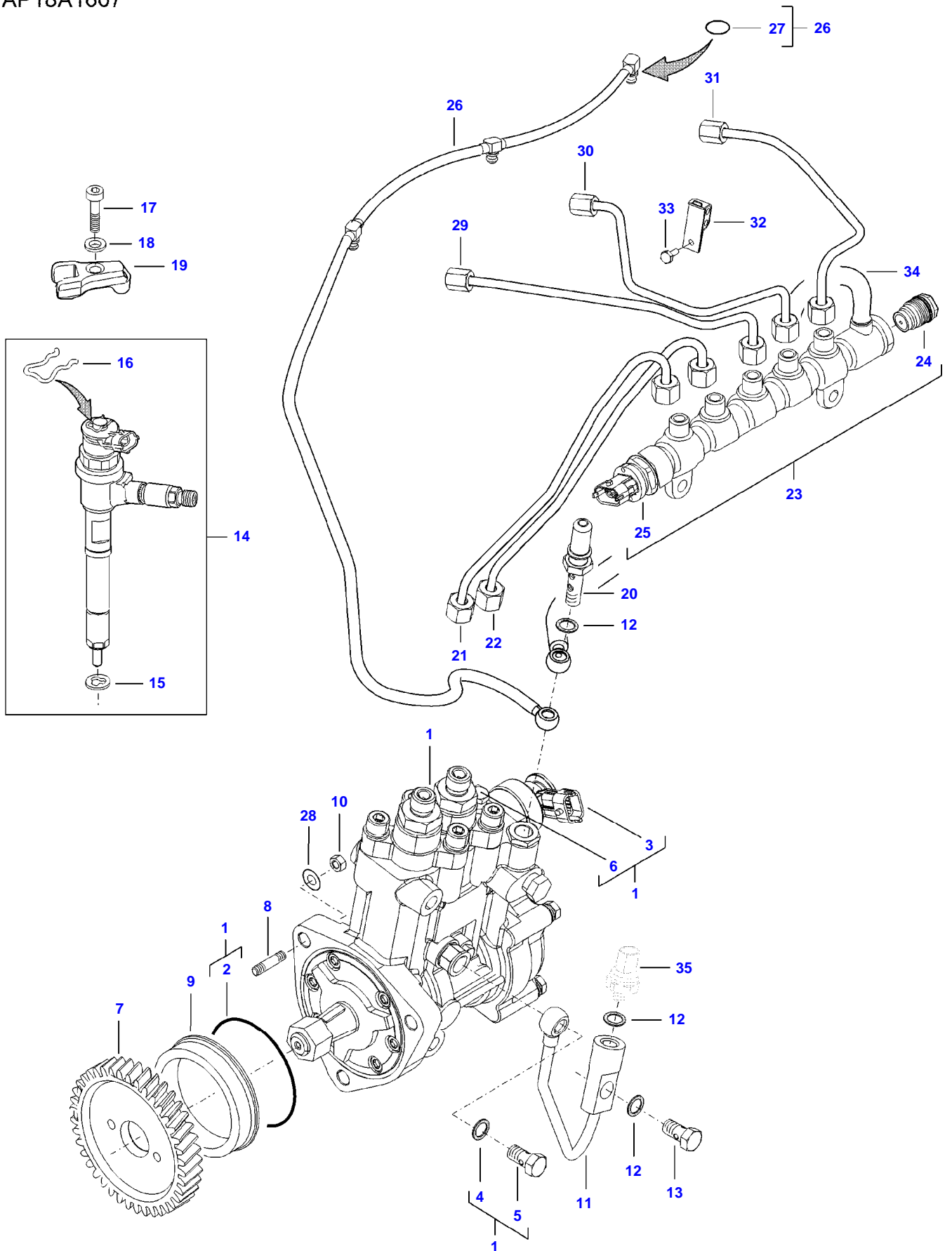
Item	Part Number	Qty	Description Comments
1	V837091844	1	KIT,WATER PUMP
2	V615881822	3	SEALING WASHER (1) [B]
3	V640325018	3	PLUG (1)
4	V615881420	1	SEALING WASHER (1) [B]
5	V640325014	1	PLUG (1)
6	V837081124	1	GASKET (1) [B]
7	V614602550	2	O-RING (1) [A]
8	V837081126	1	GASKET (1) [A]
9	V837081125	1	GASKET (1) [A]
10	V615881822	1	SEALING WASHER
11	V529801480	3	HEX CAP SCREW
12	V837081120	1	WATER PIPE
13	V837081473	1	THERM. HOUSING
14	V529801470	1	HEX CAP SCREW
15	V529801540	1	HEX CAP SCREW
16	V528801402	1	HEX CAP SCREW
17	V837081319	1	THERMOSTAT
18	V837081395	1	HOSE COUPLER
19	V837081362	1	COVER
20	V581705070	2	HEX SOCKET SCREW
21	V615871014	2	SEALING WASHER [A]
22	V837081034	1	WATER PIPE
23	V640435006	1	BANJO BOLT
24		1	

SEE PAGE 01-0015

[A] INCLUDED IN CYLINDER HEAD GASKET KIT 1**[B] INCLUDED IN COMPLETE ENGINE GASKET KIT 2**

MF 5710 TRACTOR (ECO3 / TIER3 ; BR)
AP18A1607

AP18A1607



<https://www.ebooklibonline.com>

Hello dear friend!

Thank you very much for reading.

Enter the link into your browser.

The full manual is available for immediate download.

<https://www.ebooklibonline.com>