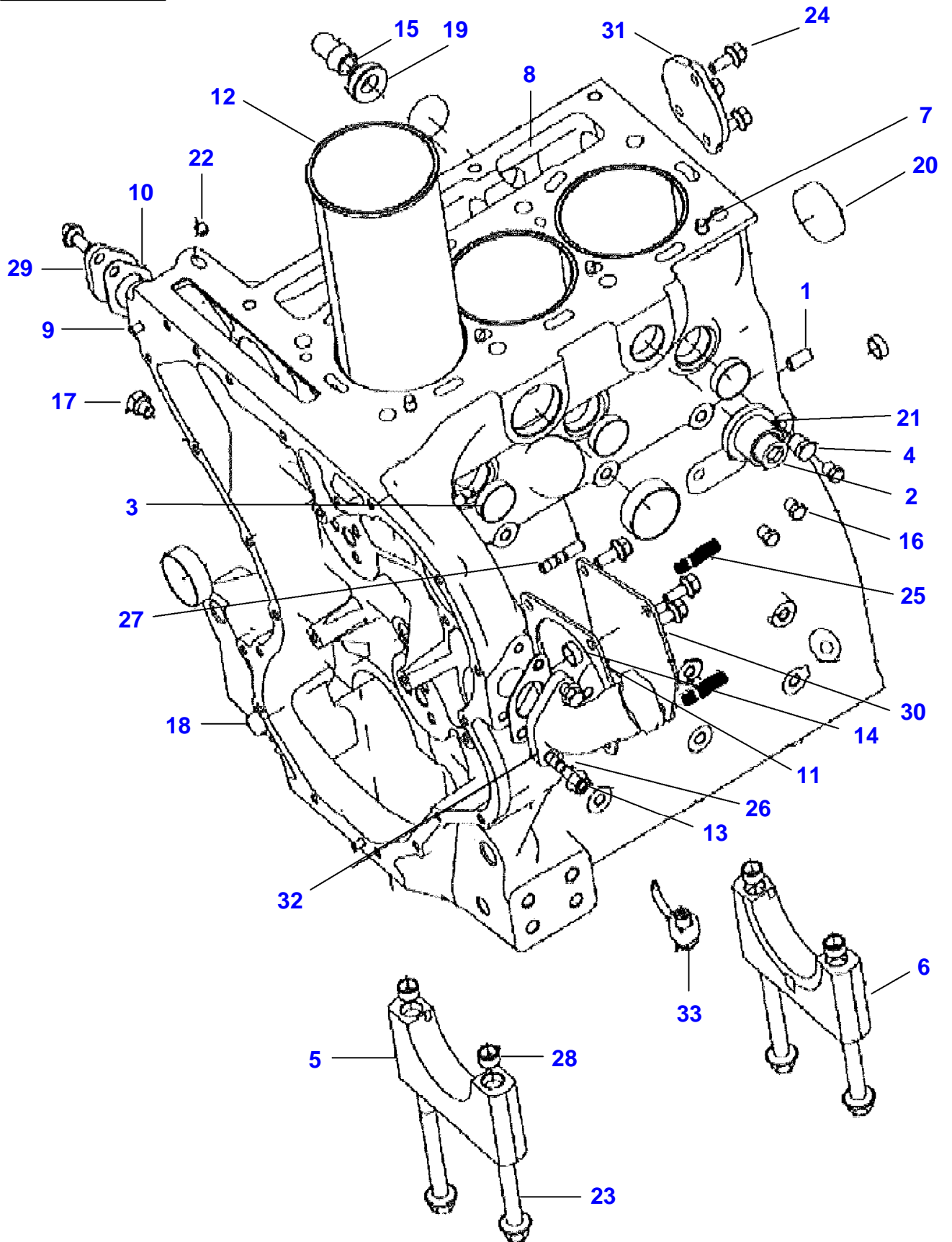


Page Number	Page Title	Page Reference
01-000-TOC	ENGINE, FUEL AND EXHAUST SYSTEM	01-000-TOC
02-000-TOC	AXLES	02-000-TOC
03-000-TOC	STEERING SYSTEM	03-000-TOC
04-000-TOC	DRIVE TRAIN SYSTEM	04-000-TOC
05-000-TOC	BRAKE SYSTEM	05-000-TOC
06-000-TOC	HYDRAULIC SYSTEM	06-000-TOC
07-000-TOC	ELECTRICAL SYSTEM	07-000-TOC
08-000-TOC	PLATFORM	08-000-TOC
09-000-TOC	CHASSIS	09-000-TOC
10-000-TOC	DECALS	10-000-TOC
11-000-TOC	WHEELS	11-000-TOC
12-000-TOC	IMPLEMENT DRIVE SYSTEM	12-000-TOC
13-000-TOC	IMPLEMENT LIFT SYSTEM REAR	13-000-TOC
14-000-TOC	LINKAGE	14-000-TOC
15-000-TOC	ACCESSORIES	15-000-TOC
16-000-TOC	GENERAL INFORMATION	16-000-TOC

9-WH01-005-A



Item	Part Number	Qty	Description Comments	Technical Specification
1	731344M1	1	DOWEL	
2	733067M1	1	PLUG	
3	731354M1	7	PLUG	
4	376670X1	1	PLUG	
5	NS	3	NON-SERVICEABLE PART	
6	NS	1	NON-SERVICEABLE PART	
7	4222552M1	2	DOWEL	
8	NS	1	NON-SERVICEABLE PART	
9	3908670M1	2	DOWEL	
10	3908671M1	2	JOINT	
11	3906997M1	1	JOINT	
12	3908672M1	3	LINER	
13	3908673M1	2	NUT	M8
14	3908945M1	2	HEX FLANGE NUT	
15	3908674M1	2	CONNECTION	
16	3904982M1	3	PLUG	
17	3905769M1	1	PLUG	M10X1
18	3904983M1	2	PLUG	
19	3908675M1	2	PLUG	
20	3908676M1	3	PLUG	DIA. 45 NOM
21	3908677M1	1	PLUG	
22	3908678M1	1	GRUB SCREW	
23	3908679M1	8	BOLT	
24	3908680M1	9	SCREW	
25	3905515M1	2	STUD BOLT	
26	3908681M1	2	STUD BOLT	
27	3908682M1	3	STUD BOLT	
28	3908683M1	8	THIMBLE	
29	3905401M1	1	BLANKING PLATE	
30	3905997M1	1	PLATE	
31	3908684M1	1	TACHOMETER	
32	3905458M1	1	OIL FILLER	
33	3908685M1	3	PIPE	
34	3908913M91	1	SHORT ENGINE	
			[A]	
35	3906693M1	1	RELAY	
			[A]	
36	3905285M1	1	TEMPERATURE SENSOR.	
			[A]	
37	3908630M1	1	HARNESS	
			[A]	
			[A] NOT ILLUSTRATED	

<https://www.ebooklibonline.com>

Hello dear friend!

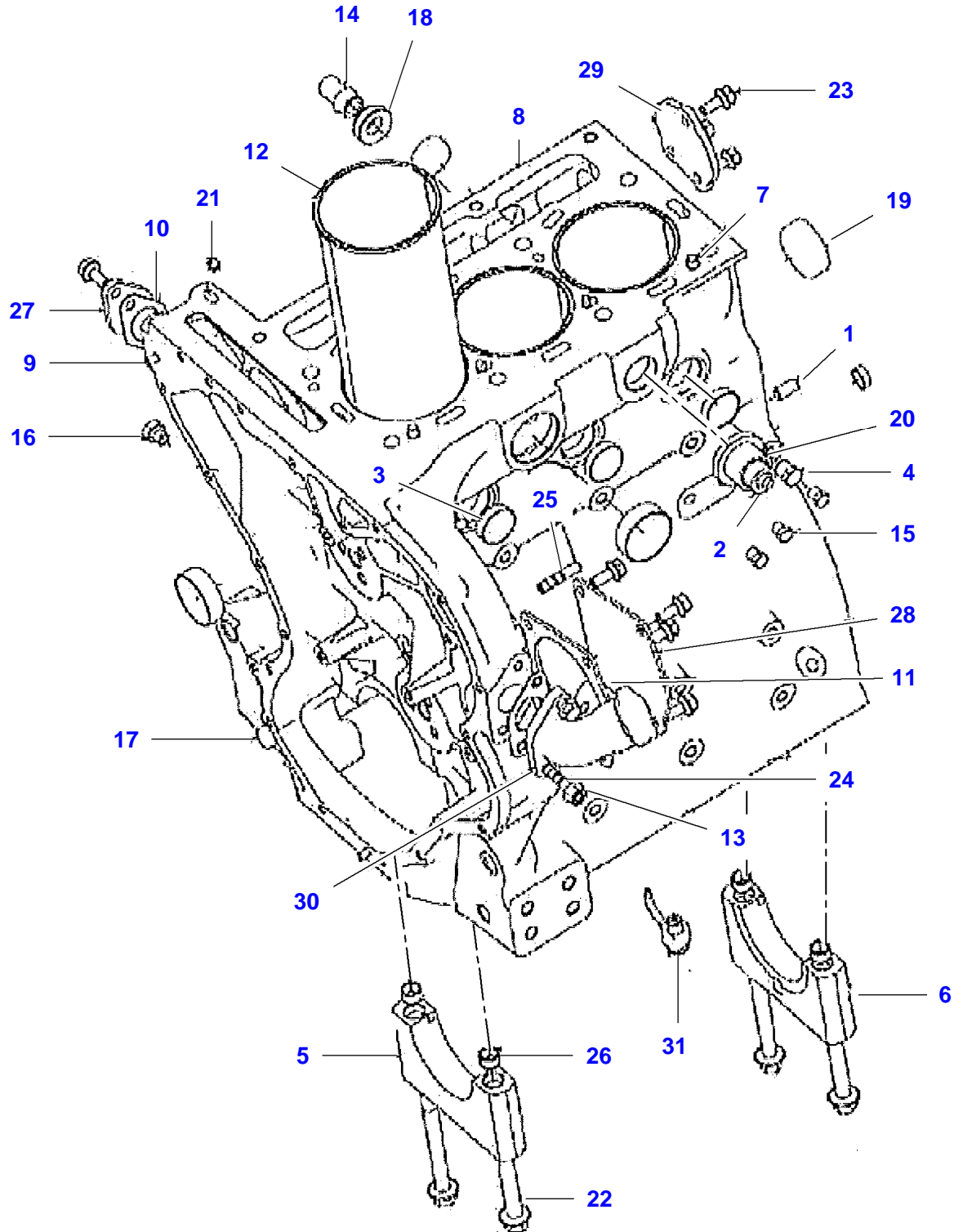
Thank you very much for reading.

Enter the link into your browser.

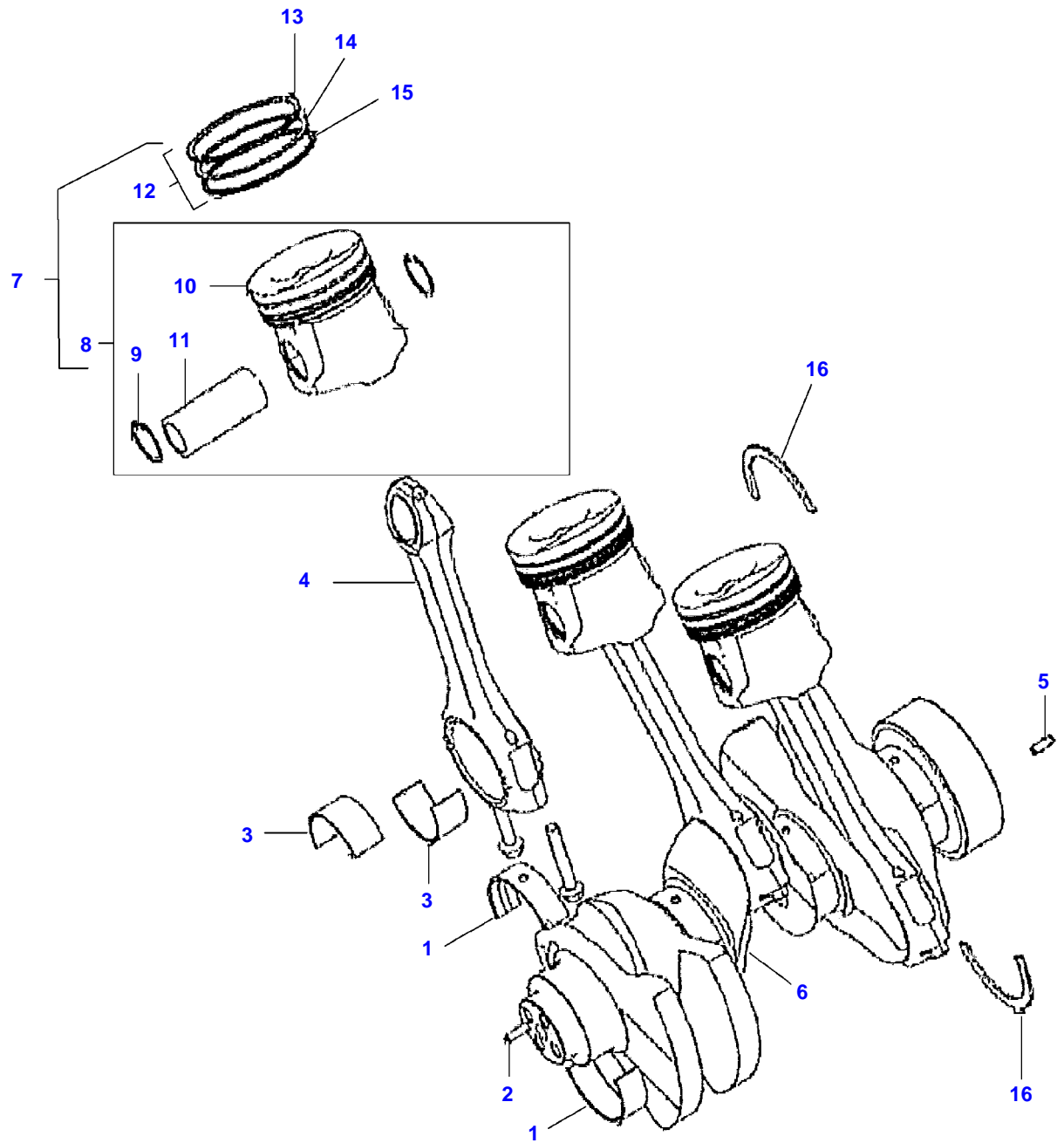
The full manual is available for immediate download.

<https://www.ebooklibonline.com>

9446597-9-A

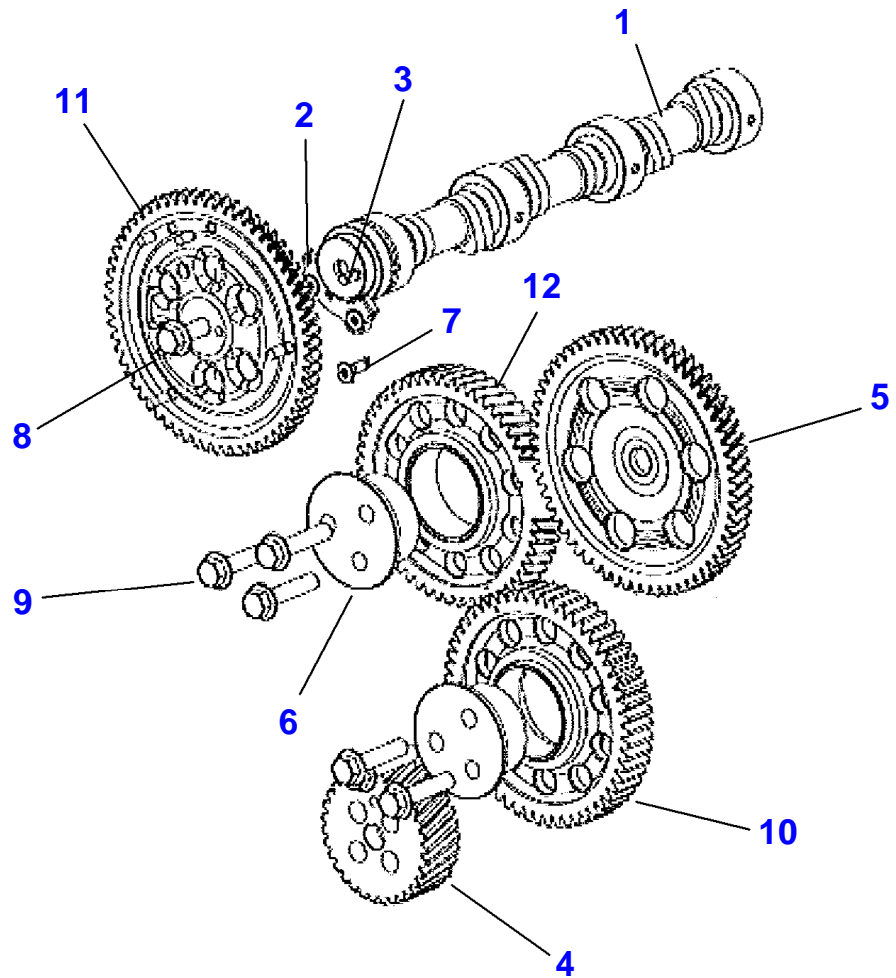


Item	Part Number	Qty	Description Comments	Technical Specification
1	731344M1	1	DOWEL	
2	733067M1	1	PLUG	
3	731354M1	7	PLUG	
4	376670X1	1	PLUG	
5	NS	3	NON-SERVICEABLE PART CAP	
6	NS	1	NON-SERVICEABLE PART CAP	
7	4222552M1	2	DOWEL	
8	NS	1	NON-SERVICEABLE PART	
9	3908670M1	2	DOWEL	
10	3908671M1	2	JOINT	
11	3908754M1	1	JOINT	
12	3908672M1	3	LINER	
13	3908673M1	2	NUT	M8
14	3908674M1	2	CONNECTION	
15	3904982M1	3	PLUG	
16	3905769M1	1	PLUG	M10X1
17	3904983M1	2	PLUG	
18	3908675M1	2	PLUG	
19	3908676M1	3	PLUG	DIA. 45 NOM
20	3908677M1	1	PLUG	
21	3908678M1	1	GRUB SCREW	
22	3908679M1	8	BOLT	
23	3908680M1	9	SCREW	
24	3908681M1	2	STUD BOLT	
25	3908682M1	3	STUD BOLT	
26	3908683M1	8	THIMBLE	
27	3905401M1	1	BLANKING PLATE	
28	3905997M1	1	PLATE	
29	3908684M1	1	TACHOMETER	
30	3908940M91	1	OIL FILLER	
31	3908685M1	3	PIPE	
32	3908686M91	1	SHORT ENGINE	
			[A]	
			[A] NOT ILLUSTRATED	



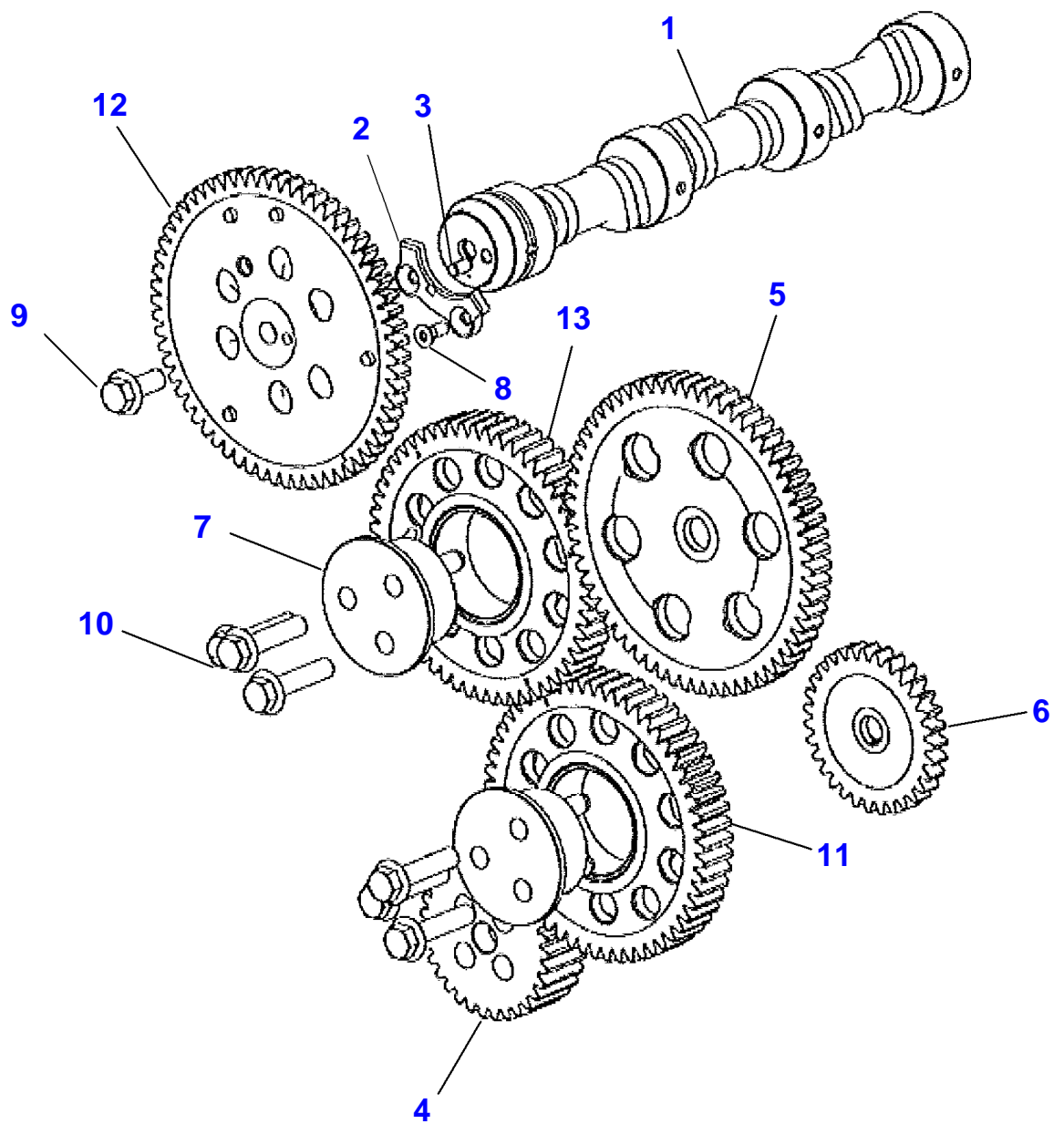
Item	Part Number	Qty	Description Comments	Technical Specification
1	3908707M1	1	KIT, BEARING	STD
	3908710M1	1	KIT, BEARING	(-)0.010"
	3908919M91	1	KIT, BEARING	(-)0.020"
	3908920M91	1	KIT, BEARING	(-)0.030"
2	3908711M1	1	DOWEL	
3	3908921M91	1	KIT, BEARING	SDT
	3908922M91	1	KIT, BEARING	(-)0.010MM
	3908923M91	1	KIT, BEARING	(-)0.020MM
	3908924M91	1	KIT, BEARING	(-)0.030MM
4	3908717M91	3	KIT, CONROD	
5	3908670M1	1	DOWEL	
6	3908704M91	1	CRANKSHAFT	
7	3908905M91	1	KIT, RING TIER2 ENGINE COMPLETE ASSEMBLY	
			TIER4F/STAGE4 ENGINE PART NUMBER TO BE ADVISED [B][C]	
8	3908904M91	1	PISTON TIER2 ENGINE COMPLETE ASSEMBLY	
	3908719M91	1	KIT, PISTON TIER4F/STAGE4 ENGINE COMPLETE ASSEMBLY	
9	3908703M1	6	CIRCLIP	
10	3908897M1	3	PISTON TIER2 ENGINE	
	3908713M1	1	PISTON TIER4F/STAGE4 ENGINE	
11	3908712M1	3	GUDGEON PIN	
12	3908718M91	1	KIT, PISTON RING COMPLETE ASSEMBLY	
13	3908714M1	3	PISTON RING	
14	3908715M1	3	PISTON RING	
15	3908716M1	3	PISTON RING	
16	3908706M1	1	THRUST WASHER	SDT
	3908709M1	1	THRUST WASHER	(+)0.007MM
			[B] TIER4F/STAGE4 ENGINE [C] NUMBER TO BE ADVISED	

8030853-9-A



Item	Part Number	Qty	Description Comments
1	3908720M1	1	CAMSHAFT
2	3908721M1	1	THRUST WASHER
3	3908722M1	1	DOWEL
4	3908894M1	1	GEAR
5	3908895M1	1	GEAR
6	3908726M1	2	HUB
7	3908727M1	2	HEX SOCKET SCREW
8	3908728M1	1	SCREW
9	3908729M1	6	SCREW
10	3908901M91	1	IDLER GEAR
11	3908731M1	1	GEAR,CAMSHAFT
12	3908902M91	1	IDLER GEAR

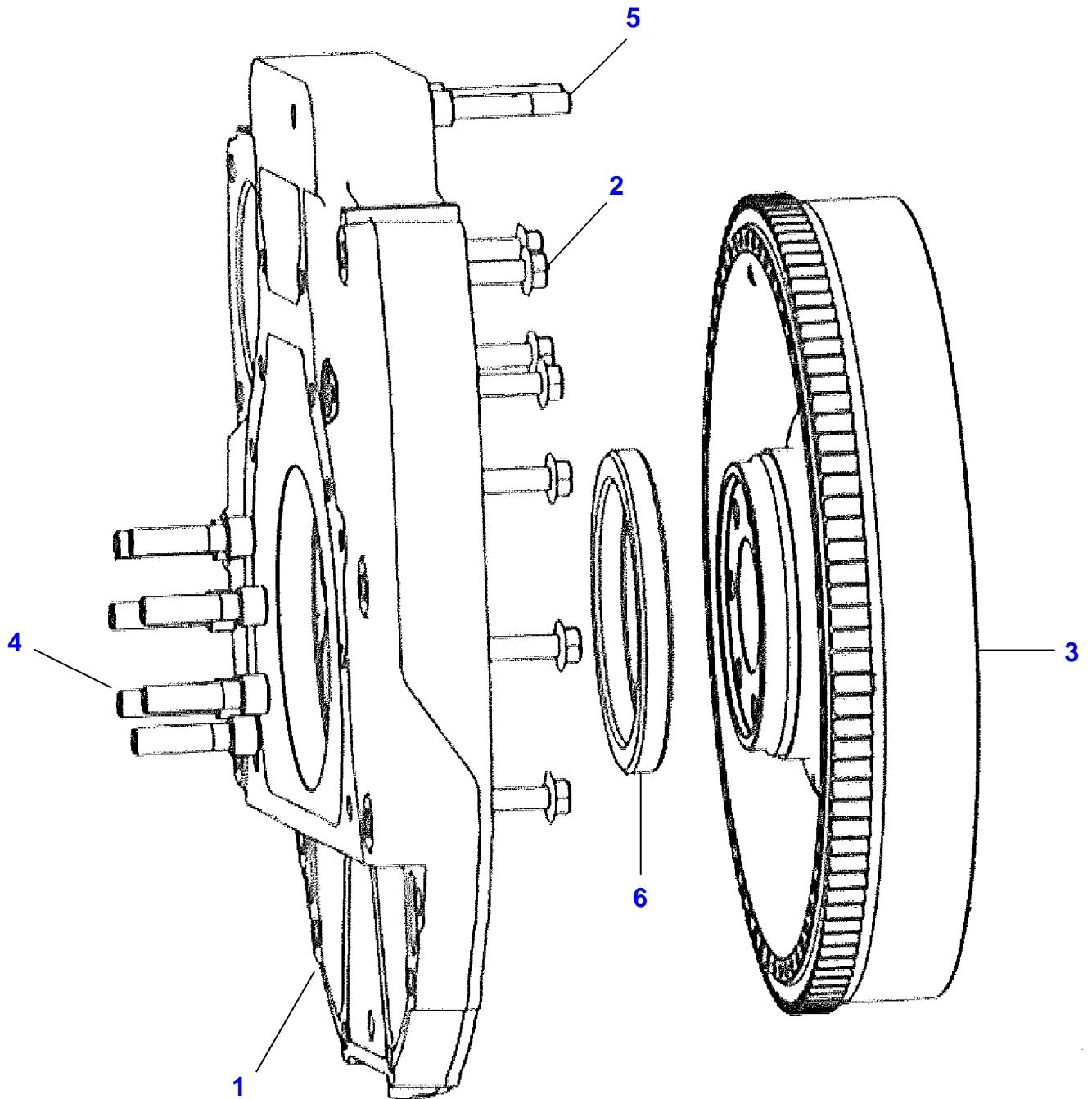
9452028-9-A



Item	Part Number	Qty	Description Comments
1	3908720M1	1	CAMSHAFT
2	3908721M1	1	THRUST WASHER
3	3908722M1	1	DOWEL
4	3908894M1	1	GEAR
5	3908935M1	1	GEAR PUMP
6	3908725M1	1	GEAR
7	3908726M1	2	HUB
8	3908727M1	2	HEX SOCKET SCREW
9	3908728M1	1	SCREW
10	3908729M1	7	SCREW
11	3908901M91	1	IDLER GEAR
12	3908939M91	1	GEAR,CAMSHAFT
13	3908902M91	1	IDLER GEAR

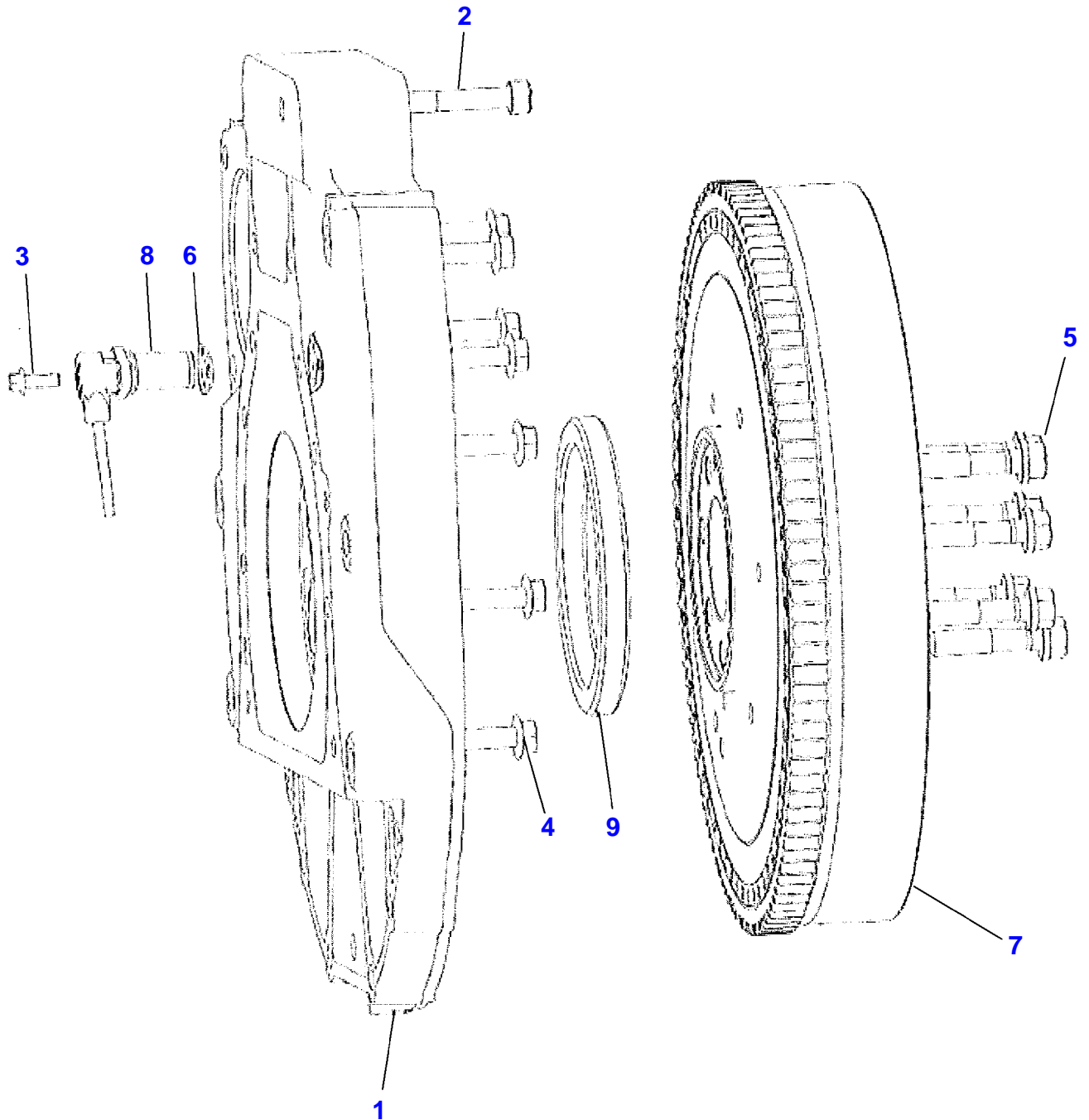
Item	Part Number	Qty	Description Comments
1	3904949M1	1	TUBE
2	3908733M1	1	DIPSTICK
3	3908734M1	1	GASKET
4	3908735M1	1	GASKET
5	3604497M1	1	DRAIN PLUG
6	3604654M1	2	SEALING WASHER
7	3908736M1	2	SETSCREW
8	3908737M1	10	SETSCREW
9	3908738M1	7	SETSCREW
10	3908680M1	5	SCREW
11	3908739M1	1	OIL SUMP
12	3908903M91	1	OIL PUMP
13	3908741M1	1	OIL PIPE
14	3908742M1	1	OIL PIPE
15	3908925M1	1	UNION

9-WA07-006-A



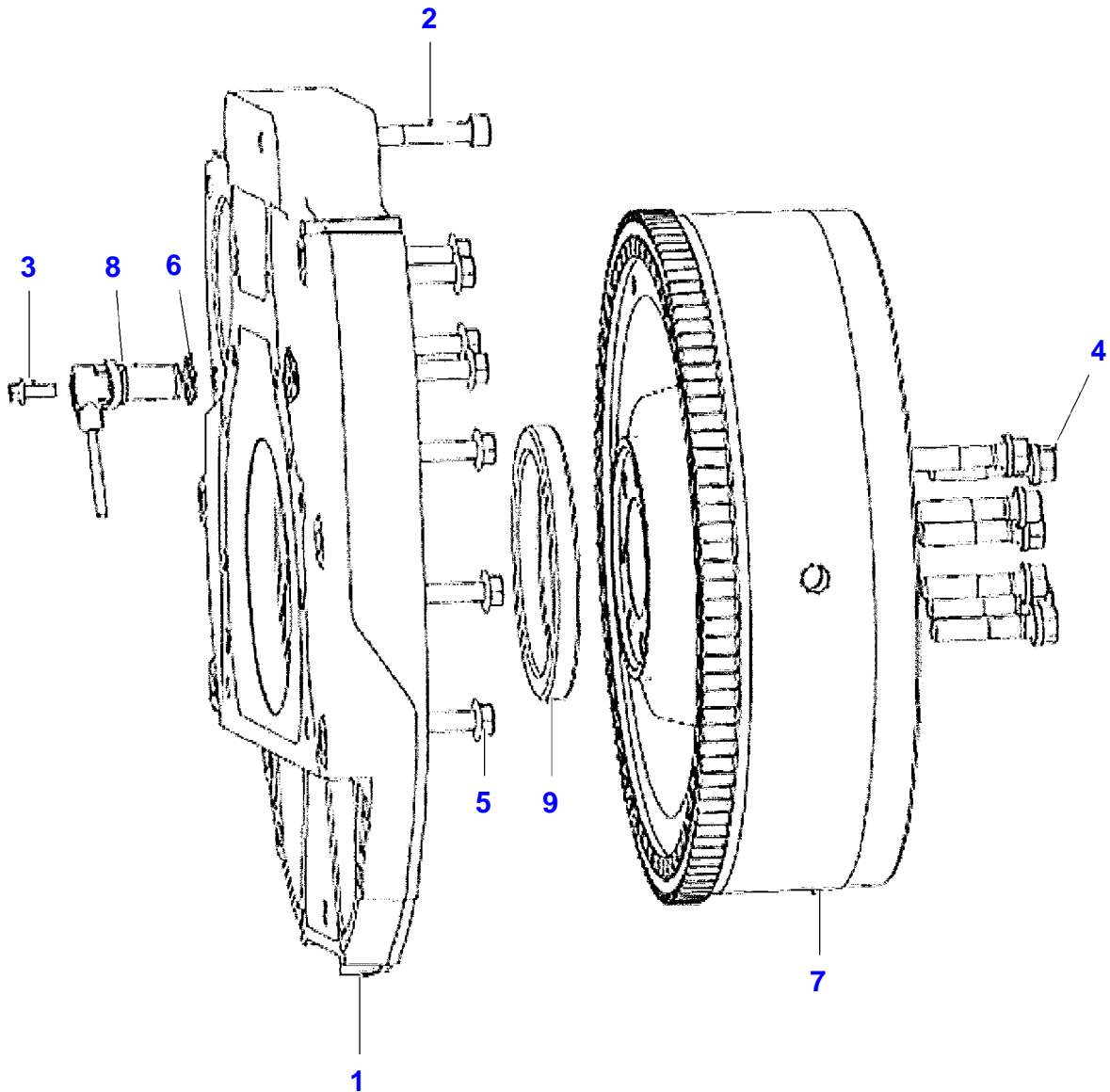
Item	Part Number	Qty	Description Comments
1	3908951M1	1	PLATE
2	3908745M1	10	SETSCREW
3	3908916M91	1	FLYWHEEL
4	3908915M1	7	HEX SOCKET SCREW
5	3908744M1	1	HEX CAP SCREW
6	3908746M1	1	OIL SEAL

9452169-9-A



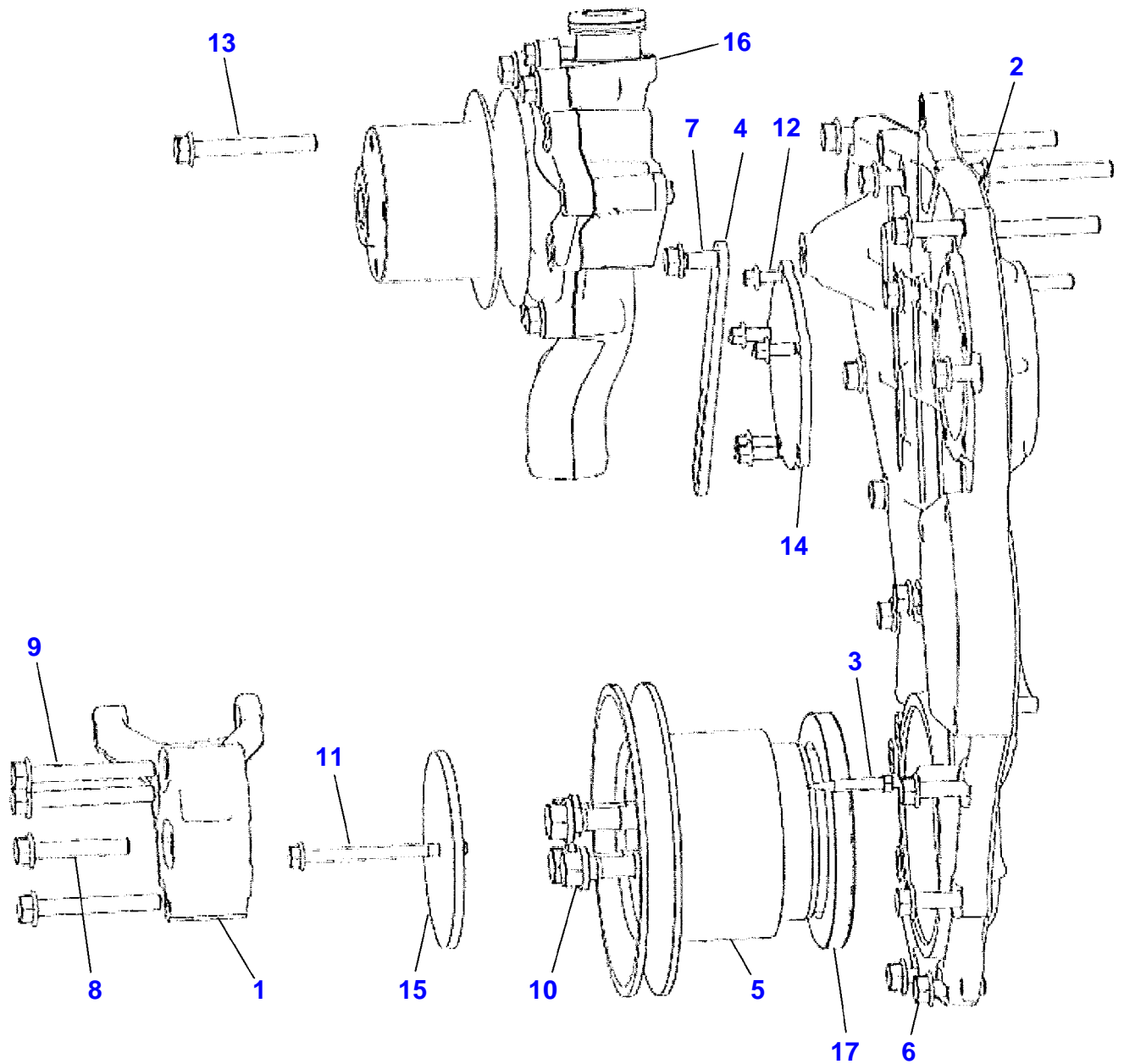
Item	Part Number	Qty	Description	Comments
1	3908743M1	1	FLYWHEEL HOUSING	
2	3908744M1	1	HEX CAP SCREW	
3	3908751M1	1	SETSCREW	
4	3908745M1	10	SETSCREW	
5	3908936M1	7	BOLT	
6	3908749M1	1	WASHER	
7	3908938M91	1	FLYWHEEL	
8	3908750M1	1	SPEED SENSOR	
9	3908746M1	1	OIL SEAL	

9462390-9-A



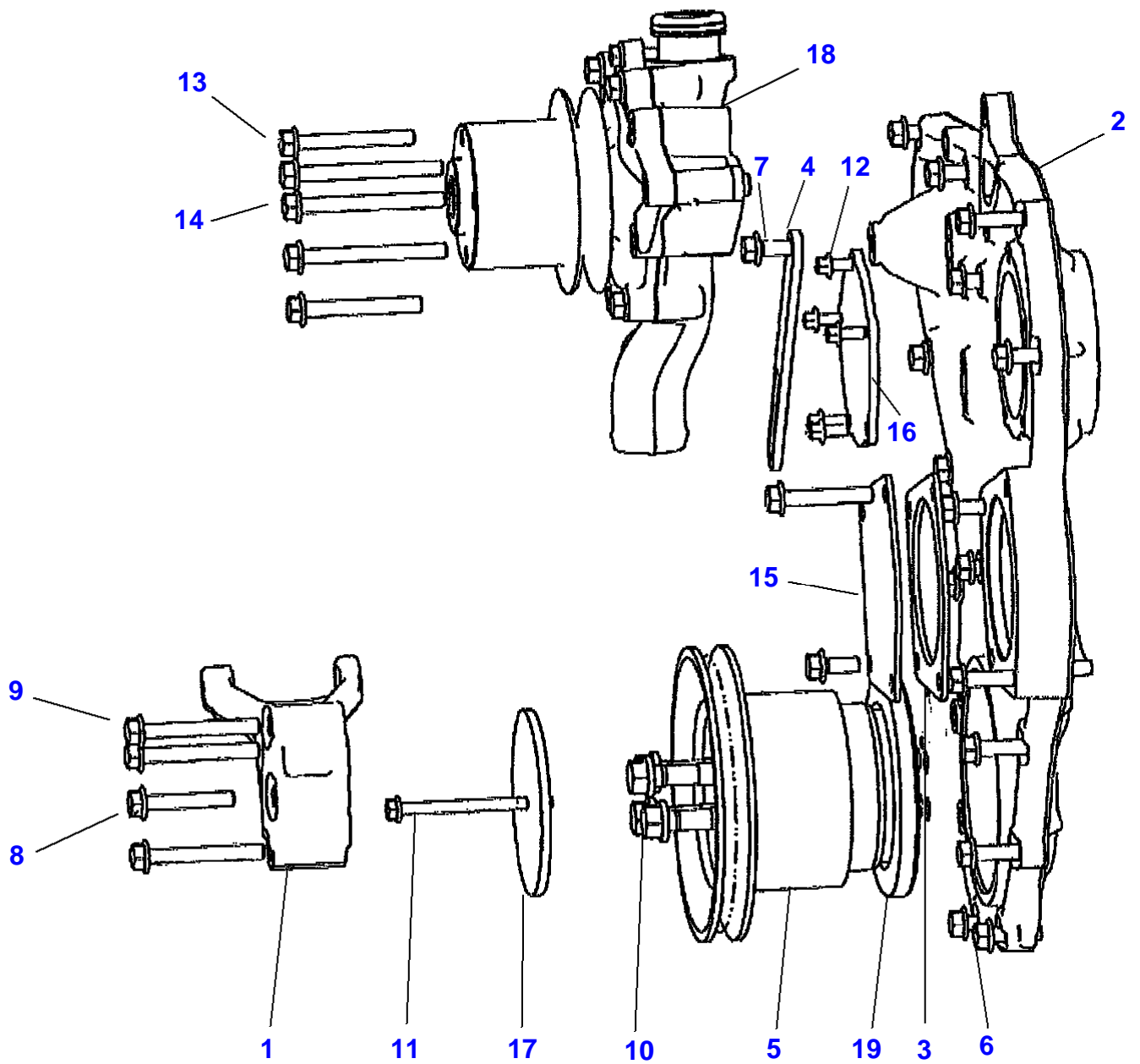
Item	Part Number	Qty	Description Comments
1	3908743M1	1	FLYWHEEL HOUSING
2	3908744M1	1	HEX CAP SCREW
3	3908751M1	1	SETSCREW
4	3908748M1	7	HEX CAP SCREW
5	3908745M1	10	SETSCREW
6	3908749M1	1	WASHER
7	3908932M91	1	FLYWHEEL
8	3908750M1	1	SPEED SENSOR
9	3908746M1	1	OIL SEAL

8030858-9-A



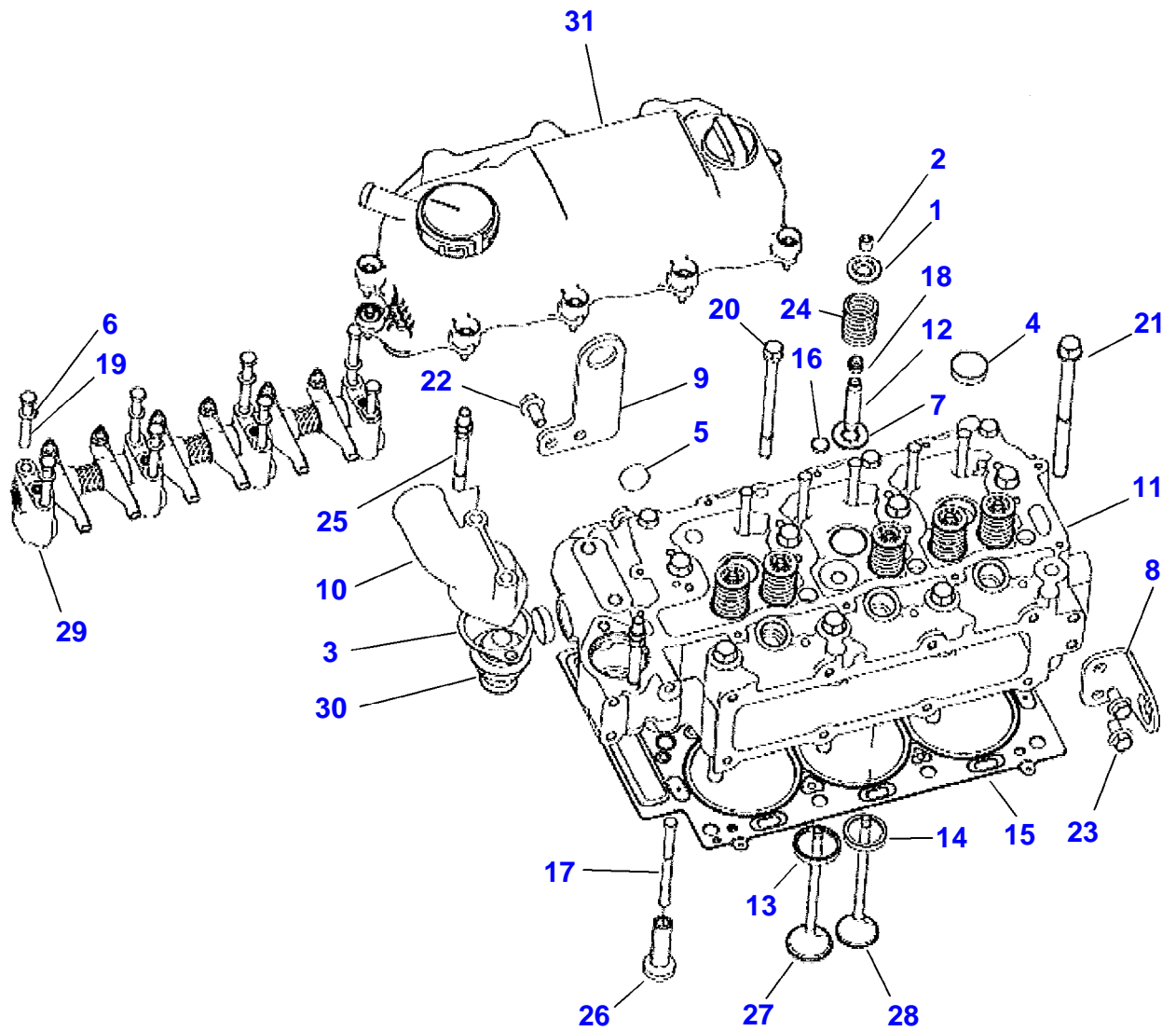
Item	Part Number	Qty	Description Comments
1	3908752M1	1	BRACKET
2	3908753M1	1	TIMINGGEAR COVER
3	3908584M1	1	POINTER
4	3908755M1	1	LEVER
5	3908756M1	1	CRANKSHAFT PULLEY
6	3908757M1	14	SCREW
7	3908680M1	2	SCREW
8	3908758M1	1	SETSCREW
9	3908759M1	3	SETSCREW
10	3908760M1	4	BOLT
11	3908761M1	1	SETSCREW
12	3908762M1	5	SETSCREW
13	3908763M1	5	SETSCREW
14	3908765M1	1	COVER
15	3908766M1	1	PLATE
16	3908917M91	1	WATER PUMP
17	3908768M1	1	SEAL

9452395-9-A



Item	Part Number	Qty	Description Comments
1	3908752M1	1	BRACKET
2	3908753M1	1	TIMINGGEAR COVER
3	3908754M1	1	JOINT
4	3908755M1	1	LEVER
5	3908756M1	1	CRANKSHAFT PULLEY
6	3908757M1	14	SCREW
7	3908680M1	2	SCREW
8	3908758M1	4	SETSCREW
9	3908759M1	3	SETSCREW
10	3908760M1	4	BOLT
11	3908761M1	1	SETSCREW
12	3908762M1	5	SETSCREW
13	3908763M1	2	SETSCREW
14	3908764M1	3	SETSCREW
15	3905997M1	1	PLATE
16	3908765M1	1	COVER
17	3908766M1	1	PLATE
18	3908917M91	1	WATER PUMP
19	3908768M1	1	SEAL

8030857-9-A





Suggest:

For more complete manuals. Please go to the home page.

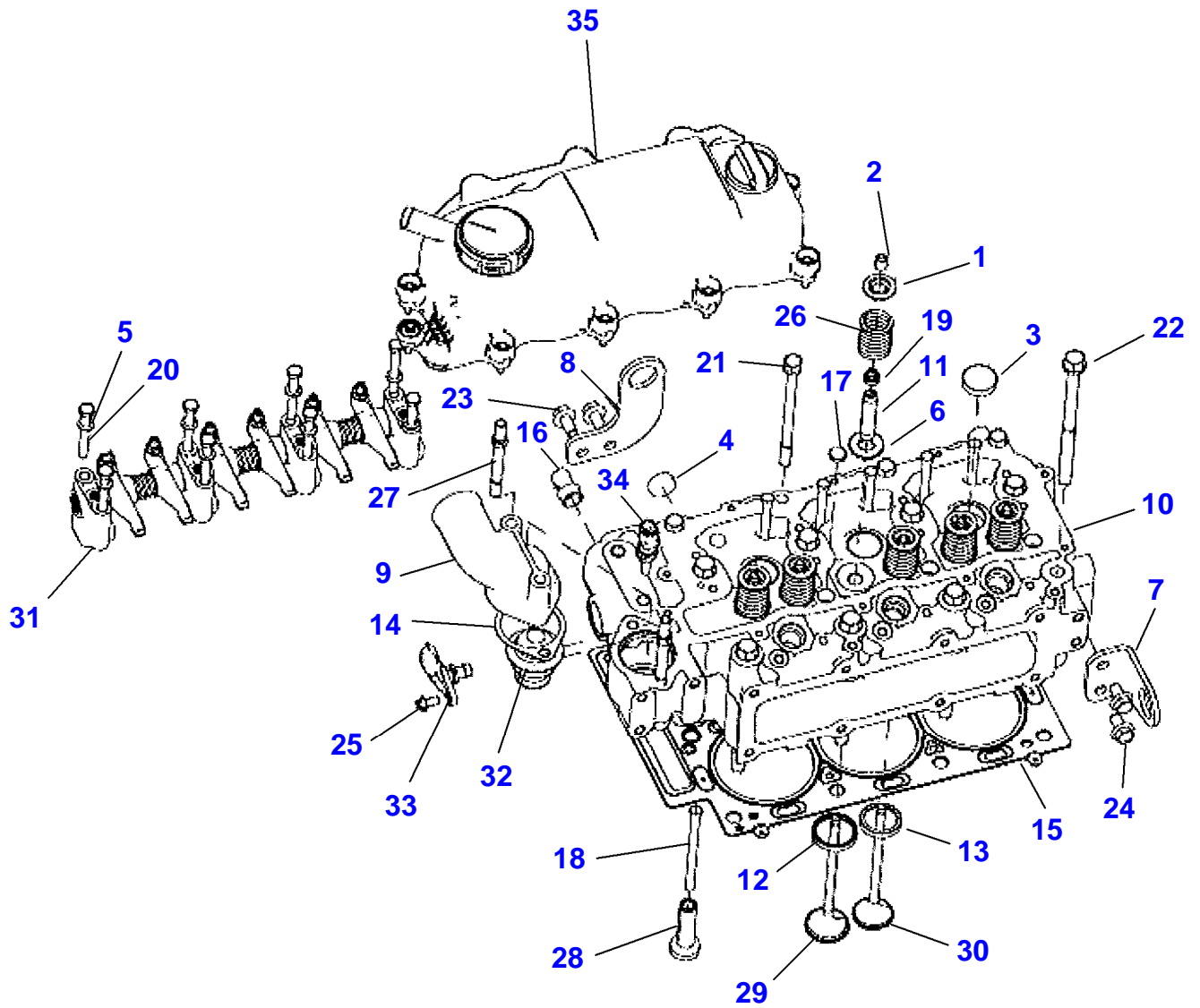
<https://www.ebooklibonline.com>

If the above button click is invalid. Please download this document first, and then click the above link to download the complete manual.

Thank you so much for reading

Item	Part Number	Qty	Description Comments	Technical Specification
1	731156M1	6	CAP	
2	731155M1	6	COTTER	
3	1650482M1	1	JOINT	
4	731354M1	5	PLUG	
5	731856M1	4	PLUG	
6	3908769M1	8	WASHER	
7	737645M1	6	WASHER	
8	3908770M1	1	BRACKET	
9	3908771M1	1	BRACKET	
10	3905983M1	1	CONNECTION	
11	NS	1	NON-SERVICEABLE PART	
12	3904958M1	6	GUIDE	
13	3904959M1	3	INSERT	
14	3904960M1	3	INSERT	
15	3908774M1	1	GASKET	
16	3908775M1	3	PLUG	
17	3904986M1	6	ROD	
18	3904989M1	6	SEAL	
19	3904993M1	8	HEX CAP SCREW	
20	3904996M1	4	HEX CAP SCREW	
21	3908776M1	8	BOLT	M12 X 1.75
22	3908777M1	2	SCREW	
23	3908778M1	2	SCREW	
24	3904999M1	6	SPRING	
25	3905993M1	2	STUD BOLT	
26	3905251M1	6	TAPPET	
27	3905252M1	3	INLET VALVE	
28	3905253M1	3	EXHAUST VALVE	
29	3908779M1	1	ROCKER SHAFT	
30	3906514M1	1	THERMOSTAT	
31	3908782M1	1	CYLINDER HEAD COVER.	
32	3908900M91	1	CYLINDER HEAD [A] [A] NOT ILLUSTRATED	

9453100-9-A



<https://www.ebooklibonline.com>

Hello dear friend!

Thank you very much for reading.

Enter the link into your browser.

The full manual is available for immediate download.

<https://www.ebooklibonline.com>