

# John Deere Straw Chopper Attachment for 40 and 42 Combines



## OPERATORS MANUAL

John Deere Straw Chopper Attachment  
for 40 and 42 Combines

OMH90664 B1 English

**OMH90664 B1**

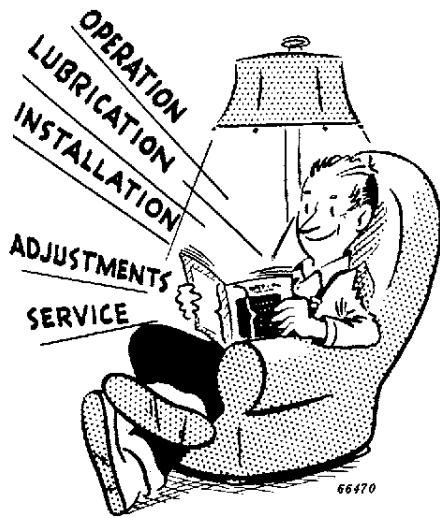
LITHO IN U.S.A.  
ENGLISH



## TO THE PURCHASER

This Operator's Manual has been carefully written and illustrated to provide the necessary information regarding installation, operation, adjustments, and lubrication so that you may obtain maximum service and satisfaction from your straw chopper attachment.

If you should find that you require information not covered in this manual, consult your John Deere dealer. He will be glad to answer any question that may arise regarding the operation of your straw chopper. Your John Deere dealer has trained mechanics who are kept informed on the best John Deere service methods and will render you prompt service if needed.



Study this manual carefully and keep it handy with your combine Operator's Manual in a safe place for future reference.

Should your straw chopper attachment require replacement parts, go to your John Deere dealer where you will receive Genuine John Deere Parts—accept no substitutes.

John Deere parts are made to fit properly and insure satisfactory service because they are made from original patterns and from the same materials as used in new machines.

### LOCATION REFERENCE

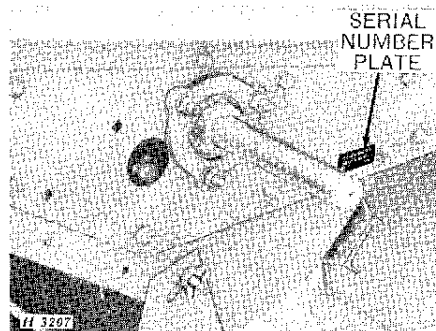
“Right-hand” and “left-hand” sides are determined by facing in the direction the attachment will travel when in use.

“Clockwise” refers to parts turning to the right like the hands of a clock.

“Counter-clockwise” refers to parts turning to the left.

### SERIAL NUMBER

The straw chopper serial number plate is located on the rear right-hand side of the straw chopper housing.



Straw Chopper Serial No. ....

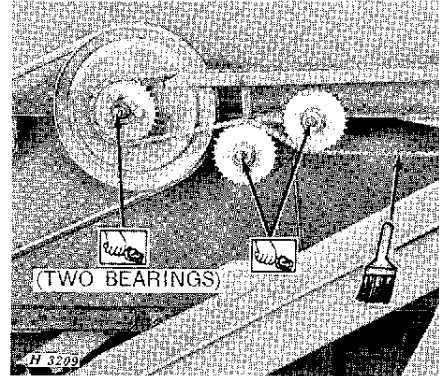
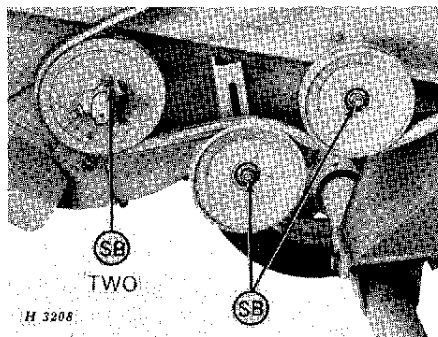
Date Purchased. ....

*(Specifications and design subject to change without notice.)*

## TABLE OF CONTENTS

	<i>Page</i>
LUBRICATION .....	1
OPERATION, ADJUSTMENTS, AND SERVICE .....	2-8
Width of Spread .....	2
Baffle Plate Adjustment .....	2
Bottom Plate Adjustment .....	2
Drive Belt and Chain Tension .....	3
Blade Replacement .....	3
Blade and Spacer Adjustment .....	3
Blade Alignment .....	4
Knife Section Replacement .....	5
Slow Speed Drive .....	6
SHIPPING PACKAGE .....	7
PREPARING THE COMBINE .....	7
INSTALLATION .....	8-12
Straw Chopper Housing .....	8-11
Jackshaft and Tightener Bracket Assembly .....	11
Drive Chain, Wooden Guides, Supports, and Shields .....	12

## LUBRICATION



### SYMBOLS



Hand Pack Every 250 Hours of Operation with SAE Multipurpose Grease.



Sealed-for-Life Bearing—No Lubrication Required.



Brush chain with SAE 10 engine oil periodically. Do not lubricate chain in dusty or sandy conditions.

**<https://www.ebooklibonline.com>**

Hello dear friend!

Thank you very much for reading.

Enter the link into your browser.

The full manual is available for immediate download.

**<https://www.ebooklibonline.com>**

**<https://www.ebooklibonline.com>**

Hello dear friend!

Thank you very much for reading.

Enter the link into your browser.

The full manual is available for immediate download.

**<https://www.ebooklibonline.com>**

## OPERATION, ADJUSTMENTS, AND SERVICE

The straw chopper chops the straw into short lengths and, at the same time, bruises it so that decomposition can take place rapidly. The adjustable fins can be set to spread the material in an even, thin layer over a wide area behind the combine and also keep it off the uncut grain.

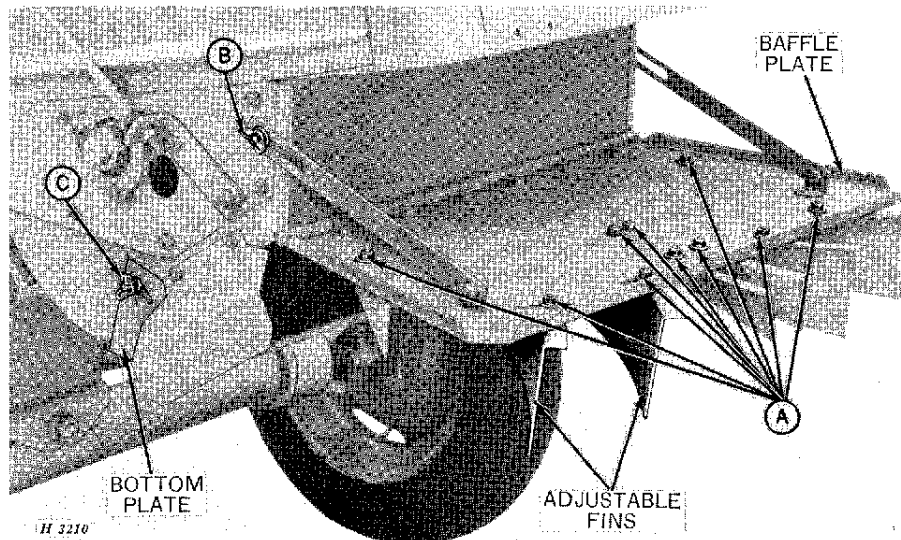
### SAFETY SUGGESTIONS



Keep shields in place at all times.



Don't stand behind straw chopper while it is running; don't allow others to do so.



### WIDTH OF SPREAD

Set the adjustable fins at the discharge end so the chopped material is spread evenly over the entire width of cut and does not cover uncut grain.

Loosen lock bolts "A," position fins as required, and tighten bolts.

### BAFFLE PLATE ADJUSTMENT

The baffle plate is adjustable up and down to control distance the chopped material is thrown. In the highest position, the chopped material will be thrown the maximum

distance; in the lowest position, it will be thrown the minimum distance. Loosen nuts at "B," both sides, position baffle plate at desired height, and tighten nuts.

### BOTTOM PLATE ADJUSTMENT

Bottom plate of chopper housing is hinged so the chopped material may be directed against the baffle plate for most effective spreading. Loosen nuts at "C," both sides, position bottom plate at desired location, and tighten nuts.



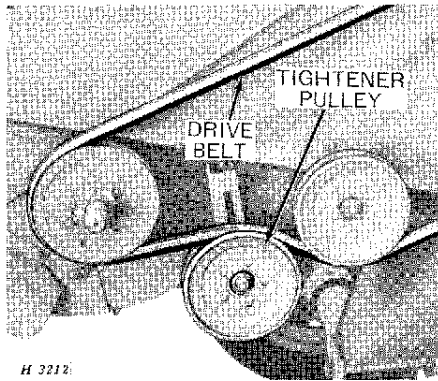
**Suggest:**

**If the above button click is invalid.**

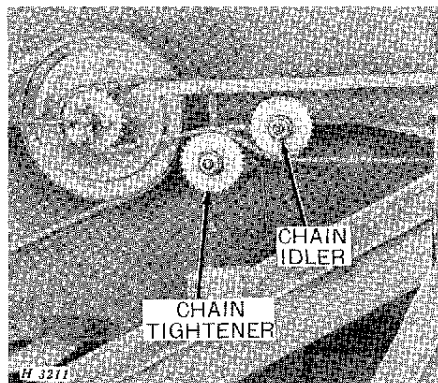
**Please download this document first, and then click the above link to download the complete manual.**

**Thank you so much for reading**

### DRIVE BELT AND CHAIN TENSION



Keep drive belt tight enough to drive chopper without slippage. Adjust belt tension with tightener pulley.



Drive chain should be just tight enough to run without climbing or jumping sprockets. Adjust as necessary with chain tightener sprocket and adjust wooden chain guides so that they are just under the chain.

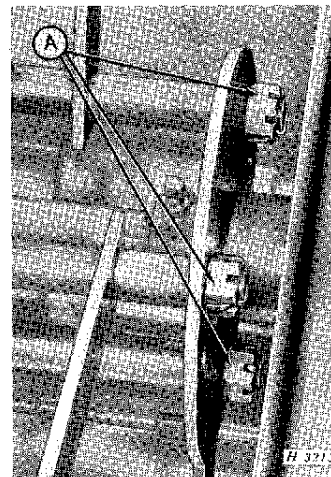
### BLADE REPLACEMENT

If a straw chopper rotary blade is broken or becomes damaged, it should be replaced immediately.

A broken blade will unbalance the chopper and cause serious damage.

Straw chopper blades can be replaced without removing the straw chopper unit from the separator. Remove the cotter pin and the slotted hexagon nut from each end of the shaft. Rotate the chopper unit until the shaft is lined up with the hole provided in side of separator and pull shaft out. When installing shaft be sure to keep the proper blade and spacer adjustment. See illustration on page 4.

### BLADE AND SPACER ADJUSTMENTS



*Blade Adjusting Nuts*

Keep nuts, "A," on the ends of the three blade hinge rods, adjusted so that blades are free to rotate with an absolute minimum of side play. This will reduce the possibility of material and moisture collecting between blades and spacers, causing the blades to "freeze" in a position that may throw the chopper out of balance.

Install straw chopper housing. Check blade alignment as instructed on page 4.